



*Light of God's House*

# CONGREGATION BETH EMETH

*Orbit*

300 West Lea Blvd, Wilmington, DE 19802 • 302-764-2393 • [bethemethde.org](http://bethemethde.org)

**VOLUME XLVI • NO. 10 12 SIVAN - 13 AV 5783 • JUNE & JULY 2023**



## A GOOD QUESTION

**YAIR D. ROBINSON**  
(HE/HIM)

This past May, somehow, I celebrated my twentieth year as a rabbi, and this July marks the beginning of my fifteenth year at Beth Emeth. I've always felt that my work in the rabbinate has been a gift. It's easy to see (I hope) in those moments of teaching and preaching, of easing the nerves of a bat mitzvah student (or her parents!), or helping ease a camper's homesickness, schmoozing at oneg, or celebrating Shabbat and the holidays from the bimah. Even those more painful moments, at a hospital bedside, or preparing a family for a funeral, or sitting with a congregant wrestling with their own doubt and hurt, have been sacred. For me, all of these experiences are blessings that I receive with gratitude, and while Jewish Philosopher Emmanuel Levinas reminds us we cannot ever fully repay the generosity which we receive, I try my best to reciprocate with affection and gratitude; in big programs and lessons and initiatives to be sure, but also in those quiet, more intimate moments, holding someone's hand or sharing a word of encouragement.

It's safe to say that I'm not the same rabbi that I was 20 years ago, ponytail aside. Much of this comes from life experiences, as a husband and father, a friend and community member. It's also from a passion for lifelong learning. I've always taken to heart the lessons of our tradition and especially the words of my teacher Rabbi Rick Sarason, that the work of the rabbinate can only be sustained if we as givers and teachers replenish our own wells from time to time, lest they run dry. So, I have sought op-

## SHABBAT SHALOM

**Friday, June 2, Kabbalat Shabbat Service, 7:00 PM**

Or join us via: <https://www.youtube.com/channel/UCDGcjXfeW866IGiUCWEbkuw>  
Pride Shabbat

*Birthday Blessings for the month of June*

**Saturday, June 3, Torah Study, 9:30 AM,**

**Adult B'nei Mitzvah Morning Service, 11:00 AM**

"Naso" Numbers 4:21-7:89; Judges 13:2-25

**Friday, June 9, Shabbat Service, 7:00 PM**

Or join us via: <https://www.youtube.com/channel/UCDGcjXfeW866IGiUCWEbkuw>

Rabbi Robinson with Brian Gluck will speak.

**Saturday, June 10, Shabbat Hike, 10:00 AM**

"Behalotecha" Numbers 8:12-16; Zechariah 2:14-4:7

**Friday, June 16, Shabbat Service, 7:00 PM**

**Rabbi Michael Kramer will speak**

Or join us via: <https://www.youtube.com/channel/UCDGcjXfeW866IGiUCWEbkuw>

**Saturday, June 17, Shabbat Torah Study, 9:30 AM with Cantor Pellen. Join by Zoom <https://us06web.zoom.us/j/7440314621>, Meeting ID: 744 031 4621**

"Shelach," Numbers 13:1-15:41; Joshua 2:1-24

**Friday, June 23, Shabbat Service, 7:00 PM**

Or join us via: <https://www.youtube.com/channel/UCDGcjXfeW866IGiUCWEbkuw>

Rabbi Grumbacher will speak.

**Saturday, June 24, Torah Study 9:30 AM, with Susan Detwiler. Join by Zoom <https://us06web.zoom.us/j/7440314621>, Meeting ID: 744 031 4621**

"Korach" Numbers 16:1-18:32; I Samuel 11:14-12:22

**Friday, June 30, Shabbat Service, 7:00 PM**

Or join us via: <https://www.youtube.com/channel/UCDGcjXfeW866IGiUCWEbkuw>

Cantor Pellen will speak

**Saturday, July 1, Torah Study 9:30 AM, with Rabbi Jeremy Winaker. Join by Zoom <https://us06web.zoom.us/j/7440314621>, Meeting ID: 744 031 4621**

"Chukat-Balak" Numbers 19:1-25:9; Michah 5:6-6:8

**Friday, July 7, Kabbalat Shabbat Service, 7:00 PM**

Or join us via: <https://www.youtube.com/channel/UCDGcjXfeW866IGiUCWEbkuw>

Eliana Hall will speak

*Birthday Blessings for the month of July*

portunities to study, be they special programs and fellowships or learning retreats and conferences, individual reading and studying with study partners, and academic programs, such as my current participation in the Council for Relationships' *Congregational and Family Systems Certificate* program. These courses of study and programs always come back to the congregation in one way or another. Sometimes it's in the form of specific programs, sermons, courses, and even, in the case of the Mussar program I participated in, publication. *All* of the learning comes back in the form of my own growth as a rabbi and a human being, hopefully for the better.

This devotion to learning and the gifts of the rabbinate come together in the form of sabbatical. We usually think of sabbatical in academic contexts; a time for faculty to step away from teaching and work on their research and publication efforts. In the Torah, the sabbatical is a Sabbath for the land; every seven years, the Israelites are commanded to let the land go fallow, trusting in God to provide for their nourishment. It is a reminder that everything, even the land itself, needs time to restore and replenish, and through that different kind of work, improve. This July, I'll be using one month (out of three) to step away from my pulpit work (well, mostly; I'll be making a handful of appearances) to do some research and start work on a project born out of my career-long appreciation of Family Systems and how they apply to congregational life. I am excited about this project and the self-renewal and growth that will come from it. I am tremendously grateful to the board of the congregation, to Cantor Pellen, Rabbi Grumbacher, and Moret Eliana Hall, our director of lifelong learning, as well as the many volunteers (both our own laypeople and various community rabbis like Michael Kramer and Jeremy Winaker) who will be providing coverage for services, Torah study, pastoral care and life-cycle events and emergencies (God forbid) while I'm away, including during my time in Israel in June, and time at camp in August. I know Beth Emeth is in good hands, and that the members of this congregation will be uplifted and loved and supported in my absence. And my confidence is buoyed by the knowledge that we have experienced sabbaticals before, including by Rabbi Grumbacher and Cantor Stanton, and that absence in the summer will minimally impact the work of the congregation. And I look forward to returning to the work of this rabbinate, renewed, restored, and ready to plant new seeds emerging from the work of this project. I look forward to seeing everyone upon my return in mid-August as we approach the High Holy Days, and excited to bring my learning and renewal forward for the betterment of all.

## Service Information Continued

**Saturday, July 8, Torah Study 9:30 AM, with Eliana Hall. Join by Zoom <https://us06web.zoom.us/j/7440314621>, Meeting ID: 744 031 4621**

*"Pinchas"* Numbers 25:10-30:1; Jeremiah 1:1-2:3

**Friday, July 14, Shabbat Service, 7:00 PM**

**Rabbi Robinson will speak**

**Or join us via:** <https://www.youtube.com/channel/UCDGcjXfeW866IGiUCWEbkuw>

**Saturday, July 15, Torah Study 9:30 AM, with Rabbi Robinson. Join by Zoom <https://us06web.zoom.us/j/7440314621>, Meeting ID: 744 031 4621**

*"Matot-Masei"* Numbers 30:2-36:13; Jeremiah 2:4-28;3:4

**Friday, July 21, Shabbat Service, 7:00 PM**

**Rabbi Grumbacher with Brian Gluck will speak**

**Or join us via:** <https://www.youtube.com/channel/UCDGcjXfeW866IGiUCWEbkuw>

**Saturday, July 22, Shabbat Study and Schmooze with Rabbi Robinson, 9:30 AM**

*"Devarim"* Deuteronomy 1:1-3:22; Isaiah 1:1-27

**Friday, July 28, Shabbat Service, 7:00 PM**

**Meir Hoberman will speak**

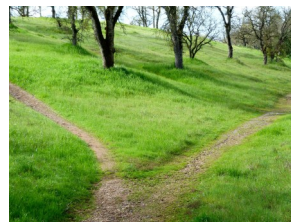
**Or join us via:** <https://www.youtube.com/channel/UCDGcjXfeW866IGiUCWEbkuw>

**Saturday, July 29, Torah Study 9:30 AM, with Cantor Pellen. Join by Zoom <https://us06web.zoom.us/j/7440314621>, Meeting ID: 744 031 4621**

*"Vaetchanan"* Deuteronomy 3:23-7:11; Isaiah 40:1-26

## Shabbat Hike June 10

Join Rabbi Robinson on Saturday, June 10, at 10:00 AM, for an outdoor meditative Shabbat hike at Tally Day Park, 1308 Foulk Rd, Wilmington, DE, 19803, near the Jasper Rose Garden. There will be no service in the building or on-line. Questions? Please email Rabbi Robinson at [rabbirobinson@bethemethde.org](mailto:rabbirobinson@bethemethde.org).



Need a ride? Or help around the house?

***Brandywine Village Network*** is here for you!



Helping you live just where you want . . . at home.

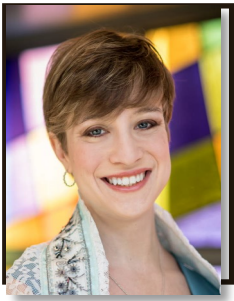
**Care Management  
Volunteer Support  
Social & Wellness Activities**

*An aging in place initiative of  
Jewish Family Services of Delaware*

[www.brandywinevillagenetwork.org](http://www.brandywinevillagenetwork.org)

302.478.9411





## CANTOR'S CORNER

**ELIZABETH F. PELLEN**  
(SHE/HER)

It may be hard to believe but this summer marks a significant anniversary. July will mark the full completion of my first FIVE years here at Congregation Beth Emeth. You may be asking yourself, how in the world is that possible?! I know there are days where I also wonder how time has flown by quite so fast. Wonderings about temporal anomalies aside, however, the fact remains that I have happily served as your cantor for five full years, and I am looking forward to the years to come.

Over these past five years, I have been blessed to grow and learn as I served this wonderful community alongside my incredible clergy partner and senior staff. In fact, we have shared in this growth and experience. Together we have navigated musical transitions (pun intended), many lifecycle events, religious school and educator transitions, and of course a pandemic. You all have walked alongside me as I met my *besheret*, bought a home, got married and settled into the life I am so blessed to call my own.

As I write this article on the eve of beginning my sixth year, I am exhilarated with the potential of the future. My head is buzzing with possibilities and ideas about how I want to continue to shape and help this community expand and grow in the next five years. Thoughts about a member-lead synagogue band to enrich occasional services and festivals; And building a team of teen and adult song leaders; making a musician-in-residence weekend an annual occurrence (like our scholar in residence weekend already is); A robust and joyful knitting and crafting club at CBE! These are just a few of my dreams. There is so much potential and I am eager to continue to build on the foundation of these last five years. I hope you are as excited as I am and I look forward to continuing to inspire and enrich our community. Here is to another five (and hopefully more!) amazing years.

## The Caring Committee

The Caring Committee provides opportunities to help members of our CBE community in a variety of ways. They include making soup and meals, writing cards and making calls, consoling the bereaved, distributing holiday gifts and visiting members of our community in facilities and their homes, although these visits have been suspended during the pandemic. New committee members are always welcome. Contact Judith Insinga by email her [jj schnitman@yahoo.com](mailto:jj schnitman@yahoo.com) or 302-764-4093 for more information about the Caring Committee.



## Quote of the Month

"The highest form of wisdom is kindness"

The Talmud



**BETH EMETH  
MEMORIAL PARK**

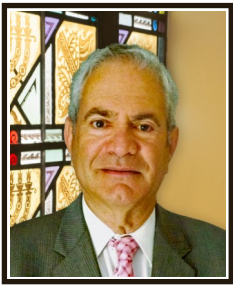
FAULKLAND RD.

OFF DUPONT RD.

FOR INFORMATION

CALL

302-764-2393



## FOCUS EMERITUS

RABBI PETER H. GRUMBACHER

### ***“Our Holocaust Memorial Garden: It All Depends on Perspective”***

I chose to speak on another topic for my April 28<sup>th</sup> sermon. It was called “*American-Jewish Heritage Month: What Are We Celebrating?*” However, I decided to use this column to make the point of the original sermon, written but not delivered.

Our Schenker/Blumenfeld Holocaust Memorial Garden and Walk of the Righteous Gentiles was designed by an artist who did *not* offer the typical design, namely barbed wire fences with the bodies of Jews dangling from them. We wanted ours to give more than a hint of hope for the future.

In addition to the names of some of the concentration camps and ghettos, our memorial has two children holding a complete menorah and a Torah scroll. The girl and boy are facing a broken menorah representing the tragedy we are commemorating. I’ve often wondered if they are headed towards the Holocaust or away from it. The patch of grass in front of the railroad tracks gave me pause; I still don’t know, but I’ve been told that many who experience our garden wonder the same thing....

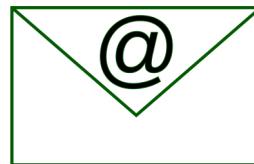
Our own children...and I’m talking about Jewish children in particular... should not have the Holocaust as their end all and be all. Sadly, my generation and the one before, focused on the negative. That’s why there are so many memorials that are graphic in nature like the ones our potential artists suggested; that’s why, in my opinion, today’s Jews are confused about their heritage; that’s why, in my opinion, we have missed the mark when conveying what Judaism and the Jewish People are all about.

To look backwards was the inclination of post-Holocaust Jews; but I maintain that in our focus on all that conflagration, so many of our People lost, forgot, or deemed irrelevant, the corpus of our values which live *in spite of the Shoah*; they lost, forgot or deemed irrelevant

our joyous holidays that emphasize the importance of life; they lost, forgot our deemed irrelevant our women and men who take pride in our religion while also making great contributions to civilization. The negative drags us down, and we have suffered greatly from more than the Shoah; ***we have suffered greatly from losing perspective on what makes our religion so life-affirming, what makes it so focused on the blossoming of the goodness and potential of all humanity.***

Yes, there was and there is, reason to look back at the broken menorah. However, I submit that without that other vision, the vision of the brightly shining menorah and the teachings found in the Torah clutched tightly in the arms of our Garden children – regardless of what life presents to us – we’re in danger of losing all hope, and that would be a tragedy in and of itself. Yes, our children and their progeny must always have *one* eye on our past, but of greater importance, *both* eyes must be looking forward to renewal, rebirth and the continuity of our faith and our People.

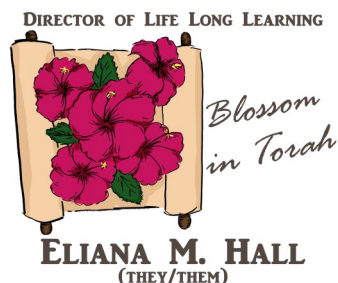
### **Orbit Submission**



All articles for the August issue of The Orbit are due on Wednesday, July 5, 2022 at 9:00 AM. Please email your articles to [lwyzg@bethemethde.org](mailto:lwyzg@bethemethde.org). Thank you.

# Mazel Tov

...to Shifrah Markiewitz on the marriage of her son, Jacob Markiewitz to Rachel Edelman, daughter of Doreen Edelman and Roger Edelman.



Summer is almost here, and for many of us, that means a break from our usual Fall-to-Spring activities. The difference is most apparent if you have children who are out of school for the summer or if you work in formal education. Even for those who don't, however, there are out-of-town vacations, in-town staycations, and cookouts. Summer just feels different, and that's true from a Jewish perspective, as well. Between Shavuot and Slichot, there just isn't a lot on the Jewish calendar, and you might find it difficult to stay Jewishly engaged. If that's true for you, here are a few suggestions to keep you plugged into Jewish life this summer.

- You can volunteer at Joseph's Pantry every Tuesday from noon to 6:00. Just like hunger, Tikkun Olam at Beth Emeth never takes a break. For more information, contact Kim vonWeltin at kaweltin@msn.com.
- Join your Beth Emeth family as we host a BBQ at the JCC this summer on Wednesday, July 19, 5:00 PM - 6:30 PM.
- Shabbat comes every week, no matter where you are. Our Friday night services are in the building for when you are in town, and we would love to see you. Our Torah study is online most weeks no matter where you are, and when it's not online, that's because we have an in-person Study and Schmooze on July 22 and August 19.
- Jewish Heritage Night at the Blue Rocks is on August 1 at Frawley Stadium as the Wilmington Blue Rocks take on the Hudson Valley Renegades! Be one of the first 500 fans through the gates to receive a commemorative banner. Gates open at 5:30 PM.
- When it's too hot to leave the house, try HUC Connect for a webinar and podcast. From their site, "HUC Connect invites you to join participants from 55 countries to discover something new about Judaism and about yourself." Go to huc.edu and click on Public Programs and Events on the upper right of their webpage, where you will find on-demand lectures about Jewish tradition,

social Justice, Jewish art, and more.

And, of course, on August 23 at 5:30 PM, we'll start gearing up for the new year with our weekly Elul classes. As always, feel free to stop by my office over the summer, or any time, to say hello, show me your vacation pictures, or tell me all about the Jews you met on your vacation.

## A Note about 2023/5784 High Holiday Tickets

This year we will once again provide High Holiday tickets electronically. You will receive your tickets on or about August 4, via email from Lisa Schrier. The subject line will be "**Congregation Beth Emeth High Holidays E-Tickets**". If you have not received your tickets by August 11, please contact Lisa at [lschrier@bethemethde.org](mailto:lschrier@bethemethde.org) or 302-764-2393. If you wish to receive paper tickets instead of e-tickets, please let Lisa know.

## Joseph's Pantry

Joseph's Pantry is an emergency food pantry hosted by Congregation Beth Emeth. Its goal is to provide a three-day supply of food and toiletries on an emergency basis, for residents of Wilmington, and specifically, for those in need, in the Ninth Ward. The hours of operation are: Tuesday afternoons, from 3:00 PM until 6:00 PM. The pantry is always in need of donations and volunteers. Some of the items that are currently on the pantry's Wish List are: toilet paper, paper towels, napkins, canned vegetables, pasta, pasta sauce, macaroni and cheese, canned fruit, laundry detergent, and menstrual products. Donations can be dropped off at Beth Emeth or can be ordered online and shipped directly to the synagogue.

Thank you for your support.





## PRESIDENT'S MESSAGE



RACHEL ALLEN  
(SHE/HER)

Over the course of four days in April, 98 presidents, incoming presidents, and presidents elect of Reform congregations from the United States and Canada, gathered in Dallas, Texas for the Union of Reform Judaism's Scheidt Seminar; I had the opportunity to be part of this group.

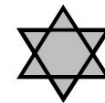
The URJ Scheidt Seminar was created in 1998 by Honey and Rudi Scheidt to bring congregational presidents together to learn to become impactful leaders and change agents. We spent these four days learning, talking, and planning. We discussed what it means to be a Reform Jew and what it means to be a President of a Reform Congregation. We talked about belonging and the relationship between a President and a Congregation. It was a privilege to be part of this group and it is an honor to serve as President of this congregation.

I have been a member of Congregation Beth Emeth for more than 13 years, which is just about the longest I have been a member of any congregation. I am originally from near Annapolis, Maryland, where my family belonged to Temple Beth Shalom. I have fond memories of attending preschool at the temple, going to religious school, and becoming Bat Mitzvah. At Iowa State University, I participated in the small Hillel group, and I started to explore what being a Jew really meant to me. I began to light my Shabbat candles and attend Friday night services with the local Reform congregation, which had rabbi led services once a month. The community was small but welcoming. Through both Hillel and that small Reform Jewish community, I developed a deeper appreciation for the celebration of the holidays and the joy in coming together for those celebrations.

A wonderful thing about being part of the Reform Jewish community, is that while my time in Ames, Iowa had to end, I knew that I would be able to find a new community and be wel-

comed wherever I went next. When I moved to Carlisle, Pennsylvania, I was welcomed by the Reform Jewish community not just in Carlisle but in Harrisburg as well. The greatest welcome I have felt, however, is where I am now, Congregation Beth Emeth. When I visited Wilmington in 2010 to find a place to live, my mother and I just dropped by the congregation to check it out. We were cordially greeted and offered a tour of the building. Upon becoming a member, I was warmly welcomed by many congregants. Attending Friday night services became an experience that grounded me and helped me find my place in new surroundings. I was honored when I was asked to serve on the Board of Trustees and now even more so, to serve as the congregation's president.

I learned a lot of great information and many exciting ideas at the Scheidt Seminar, but personally I continue to return to the concept of belonging. Belonging is what brought me to our community while living in the middle of Iowa. It is also what has given me strength, during my times of transition. Our community at Congregation Beth Emeth has consistently and overwhelmingly made me feel welcome and during my time as president, that will be my guiding value. I cannot do this alone. I look forward to working with our wonderful clergy, teachers, and staff, who all work so hard to make our Congregation as great as it is. I am also looking forward to working with you as we continue to make our congregation the welcoming and engaging community that I have always known it to be. Together we can continue to build our place of belonging here at Congregation Beth Emeth.



## Schoenberg Memorial Chapel

*Dedicated to serving our community  
with Compassion, Competence and Dignity*

519 Philadelphia Pike

**302-762-0334**

## June 2023

Sunday	Monday	Tuesday	Wednesday	Thursday	Friday	Saturday
				1 (12 Sivan)	2 (13 Sivan) Pride Shabbat 7:00pm Kabbalat Shabbat Service 8:00pm Oneg	3 (14 Sivan) <b>Naso</b> 9:30am Torah Study 11:00am Adult B'nei Mitzvah Service
4 (15 Sivan)	5 (16 Sivan)	6 (17 Sivan) 12:00pm Stocking for Joseph's Pantry 3:00pm Joseph's Pantry Open	7 (18 Sivan)	8 (19 Sivan)	9 (20 Sivan) 7:00pm Shabbat Service 8:00pm Oneg	10 (21 Sivan) <b>B'haalot'cha</b> 10:00am Shabbat Hike
11 (22 Sivan)	12 (23 Sivan)	13 (24 Sivan) 12:00pm Stocking for Joseph's Pantry 3:00pm Joseph's Pantry Open 7:00pm Board Meeting	14 (25 Sivan)	15 (26 Sivan)	16 (27 Sivan) 7:00pm Shabbat Service 8:00pm Oneg	17 (28 Sivan) <b>Sh'lach L'cha</b> 9:30am Torah Study
18 (29 Sivan) Father's Day	19 (30 Sivan)	20 (1 Tammuz) 12:00pm Stocking for Joseph's Pantry 3:00pm Joseph's Pantry Open	21 (2 Tammuz)	22 (3 Tammuz)	23 (4 Tammuz) 7:00pm Shabbat Service 8:00pm Oneg	24 (5 Tammuz) <b>Korach</b> 9:30am Torah Study
25 (6 Tammuz)	26 (7 Tammuz)	27 (8 Tammuz) 12:00pm Stocking for Joseph's Pantry 3:00pm Joseph's Pantry Open	28 (9 Tammuz)	29 (10 Tammuz)	30 (11 Tammuz) 7:00pm Shabbat Service 8:00pm Oneg	



## **FRUIT DESSERT PIZZA BY JAMIE GELLER TEST KITCHENS**

### **INGREDIENTS**

- 1 -18 ounce package refrigerated sugar cookie dough
- 4 ounces cream cheese (1/3 less fat), softened
- 4 ounces frozen whipped topping, thawed
- 1 1/2 teaspoons Sugar
- 1 -16 ounce can sliced light peaches, drained (reserve juice)
- 7 large fresh strawberries
- 1 to 2 medium kiwis
- 1 tablespoon cornstarch
- 1/3 cup Sugar

### **PREPARATION**

- 1** Pre-heat oven to 350°F.
- 2** Cut cookie dough into slices and arrange on a 12-inch pizza pan, coated with non-stick spray.
- 3** Press slices together to form a solid crust. Bake 12 to 15 minutes until golden. Crust is done when edges begin to brown.
- 4** Beat cream cheese until smooth; add sugar and whipped topping. Spread evenly over cooled crust. Top with peach slices, strawberries, and kiwi.
- 5** Combine 1/2 cup reserved peach juice, 1/3 cup sugar and 1 tablespoon cornstarch. Cook until thick. Drizzle over pizza and chill. Serves 8.

## **Sisterhood News**

The Sisterhood Donor Event was a huge success! Thank you to our generous 2023 donors. We are very grateful for your support.

### **BLACKOUT**

Judy Goldbaum, Joanie Kalin, Holly Krinsky, Heather Margolin, Ethel Parsons & Michele Sands

### **FOUR CORNERS**

Phyllis and Jim Feingold & Marcia Russakow

### **BIG X**

Karen Caplan and Jan Goodman

### **OUTSIDE EDGE**

Rachel Allen, Susan Cherrin, Laurene M. Ehemann, Judith Insigna, Julie Levenson, Bonnie Polykov, Melissa Rosenthal & Nancy Selzer

### **SMALL DIAMOND**

Richard Antinoph, Eilene Cohen, Wendy Cutler, Mindy Frankfurt, Suzy Grumbacher, Sarah Kittinger, Sue Paul, Laurie Ross, Miriam Sandler, Sherry Simmons, and Robin Zink

### **SINGLE LINE**

Allison Brody, Judy Dorfman, Rose Ebner, Heather Feliciano, Amy Harrison, Sandy McBride, Linda Sachais, Thelia and Shoshana Taytelbaum

Our 2023 Sisterhood Bingo Donor Event was a huge success and lots of fun! Thank you to everyone who attended the event and to everyone who supported the event in every way!! There were many local businesses who supported this year's event with donations. Please consider supporting these businesses if you can, as a way to thank them for their continued support of Beth Emeth and Sisterhood!!

Thank you to the following businesses for their generosity and support of this year's event: Brandywine Brewing Company; Candy For All Occasions;

Currie Hair Skin & Nails; Cycology 202; Deerfield Golf Club; The Delaware Contemporary; Delaware Museum of Nature & Science; Delaware Historical Society; Friendly Gift Shop; The Grand Wilmington; Hagley Museum and Library; Heather Feliciano; The Inn at Grace Winery; Janssen's Market; Joseph Anthony Retreat Spa & Salon; Mt. Cuba Center; Pam Vanderloo; Penns Wood Winery; Sarah Kittinger; Thirty-One Gifts; and Wilmington Brew Works



### THE MOVIES AT NOON (Formally "Lunch and Learn with Sue")

Once a month on Wednesdays from 12:00 -1:30 PM at Beth Emeth. Join us for the last movie on Wednesday, June 28 - **The Richie Boys** (on Tubi TV)

Watch the movies on your own before we meet and we'll discuss the films together. Sue Paul will moderate our discussion. Bring a sandwich for yourself to eat and we will provide drinks and dessert!! We'll meet in the Beth Emeth library. RSVP for these events to Missy Rosenthal by emailing her at [mmrosenthal@comcast.net](mailto:mmrosenthal@comcast.net).

### MAHJONGG MONDAY

Come join us on June 12, 11:00 AM-1:00 PM to play the fun and exciting game of Mahjongg! Beginners are welcome! We'll try to break up into groups of four with beginners grouped together and more experienced players grouped together. Please RSVP to Missy Rosenthal by emailing her at [mmrosenthal@comcast.net](mailto:mmrosenthal@comcast.net), so we know

how many people to expect, how many sets we need and if you consider yourself a beginner or experienced player. If you have a set and mahjongg card(s), please bring them!! We'll provide snacks and drinks!!



### Next Sisterhood Meetings

June 6, 2023, at 7:00 PM on Zoom:  
<https://us02web.zoom.us/j/83623413502?pwd=c2NXc2kyTFFhWEczcUhMNWZwbDhjQT09>

o Meeting ID: 836 2341 3502  
 Passcode: 875153

July 6, 2023, at 7:00 PM on Zoom  
 (moved Thursday due to July 4th holiday):  
<https://us02web.zoom.us/j/89074230115?pwd=TFhoajVtQ2RmbC8xNUt3QkFOVjJOdz09>

o Meeting ID: 890 7423 0115  
 Passcode: 809777

August 1, 2023 at 7:00 PM on Zoom:  
<https://us02web.zoom.us/j/87691611454?pwd=Zjg2dDVqc3JQaFcrV1FQVDgga2dtZz09>

o Meeting ID: 876 9161 1454  
 Passcode: 291192



## List of Funds to Donate to at CBE

**ABLEMAN LITURGICAL ARTS FUND** - Provides programs, contemporary worship or special musical events during Jewish Music Celebration.

**PAUL AND LILLIAN CRAMER**

**MEMORIAL FUND** - To purchase equipment, and to enrich school educational programs; to fund capital improvements and maintenance to Temple property.

**FAMILY ASSISTANCE** - For needy families.

**HARRY AND ESTHER JACOBS**

**MEMORIAL FUND** - For Adult Education and other special programs.

**KEIL-HERRMANN MEMORIAL FUND** - To support annual Scholar-in-Residence lecture series.

**BERNARD KRESHTOOL MEMORIAL FUND** - For Living Judaism programs such as Adult Jewish Education.

**MILTON & HATTIE KUTZ SCHOLARSHIP FUND** - To help defray expenses of our youth at Jewish camps, conclaves, Gratz High School, as well as school tuition.

**EDITH LABOVSKY MEMORIAL FUND FOR STUDENT VISITS TO ISRAEL** - Assistance for Youth and Family Education.

**DR. LEO AND JULIA B. BLUMBERG SCHOLARSHIP FUND** - For the same such purposes as the **KUTZ FUND**.

**DIRECTOR OF LIFE LONG LEARNING DISCRETIONARY FUND** - for the Religious School

**LIBRARY FUND** - To purchase books for the library.

**MARGARET MAY MEMORIAL JEWISH FAMILY LIFE EDUCATION FUND** - For Jewish educational programs.

**MAZON** - A Jewish Response to Hunger - fundraising to help solve the problem of hunger.

**RAYMOND AND ESTHER MCDONALD MEMORIAL FUND** - For activities relating to the State of Israel.

**RABBI GRUMBACHER MUSIC FUND** - To promote Jewish music with guest musicians and purchase music.

**PRAYER BOOK FUND** - funding for prayer book and bookplates call the office for pricing.

## RABBIS'/CANTOR'DISCRETIONARY

**FUNDS** - To support Jewish causes, pursue acts of loving kindness, etc. **Rabbi and Cantor has a separate fund.**

**ROSENTHAL JEWISH BOOK MONTH LECTURE FUND** - To promote Jewish Literature and a biannual lecture.

**SOCIAL ACTION FUND** - To be used at the discretion of the Social Action Committee for local groups in need i.e. Sojourner's Place.

**TEMPLE FUND** - Undesignated contributions - for general congregation purposes.

**VANCE BOLEN MEMORIAL FUND** - To support Cadet Aides.

**PEARL K. BREGMAN MEMORIAL FUND** - fund available for use by the Caring Community Connection Committee.

**ALICE SCHIFF MEMORIAL FUND** - needs recommended by the Endowment Fund Committee and the Board of Trustees.

**ADULT AND YOUTH CHOIR FUND** - to promote and support the Adult and Youth Choir needs.

**LEONA ELKINS SCHOLARSHIP FUND** - awarding need based scholarship to students of CBE studying Hebrew or advanced Hebrew Studies at CBE, Gratz Hebrew High School or education programs in Israel.

**RABBI HERBERT E. DROOZ & FLORENCE Z. DROOZ FUND** - awards for scholastic excellence.

**JUDGE STIFTEL AND YAFFEE FUND** - needs recommended by the Endowment Fund Committee and the Board of Trustees.

**THE HARRY & BLANCHE WOLPERT FUND** - Family assistance fund .

**STAT FAMILY GIFT FUND-** Religious School camp and Israel trip scholarships

**HAROLD & BEATRICE SNYDER CAMP HARLAM FUND-** For Camp Harlam Scholarships.

**MILTON & GAIL WAHL FUND** - subsidize the publishing of The Orbit.

**THE MEMBERSHIP ASSISTANCE FUND** - to assist families or individual to pay the minimum dues.

**CARING COMMUNITY COMMITTEE** – To support the Beth Emeth community with care baskets, driving needs, food, cards, etc...

**THE CONGREGATION BETH EMETH EDUCATION FUND** – or supplies and programs for educational needs.

**THE IRENE PACKLES MEMORIAL FUND FOR HIGH SCHOOL SENIORS-** Contributions made to this fund will enable our high school students to make the transition to college more easily, with regard to their Jewish identity.

**THE LARRY ISAKOFF MUSIC PERFORMANCE FUND-** income from this fund will be used to pay for musical events such as cantorial and choir concerts, musical plays, etc.

**YOUTH AND FAMILY PROGRAMMING** – for youth and family programs.

**THE HOLOCAUST GARDEN MAINTENANCE FUND** – Maintenance of the Holocaust Garden

**THE TORAH REPAIR FUND** – To repair the Torah.

**THE SCHOLARSHIP FUND** - to provide funds for Religious School and Camp scholarships.

**HOSPITALITY FUND** – to help with noshes, onegs and other events

**JOSEPH'S PANTRY (Beth Emeth Food Pantry)** – to provide funds for the purchase of food in order to supplement in-kind donations

**JOSEPH ZIMMERMAN MEMORIAL MUSIC FUND** – to fund the hiring of a professional cellist during Kol Nidre.

## Notice

All contributions sent to the temple should be made out to **"Congregation Beth Emeth."** If a special fund is desired, its name should be noted on the memo line or in an accompanying letter. Thank you for your cooperation.

## A Note about Contributions

We welcome all contributions. If you wish the contribution to be listed in *The Orbit*, there is a minimum donation of \$10. This also covers the mailing of ONE acknowledgement card. Please be sure to include the address if the person(s) are not members of Congregation Beth Emeth. The card is mailed when the check is received.

It is important that, when you send in a donation, you write specifically how you want the donation listed. Please include a note with your check, printed clearly or typed, stating exactly how you want the contribution to read. For example: Mary and John Doe in memory of..., Mr. and Mrs. John Doe in honor of..., Mr. John and Mrs. Mary Doe in beloved memory of....

Please remember to write legibly and to list which funds you would like your donation to go to. Please make your check payable to Congregation Beth Emeth. Also, *The Orbit* usually runs three weeks ahead of schedule so it may take three weeks for your donation to appear in *The Orbit* from the date you mail it. Thank you for your cooperation.



**Are you receiving j-VOICE Monthly?**

THANKS TO A PARTNERSHIP BETWEEN JEWISH FEDERATION OF DELAWARE AND CONGREGATION BETH EMETH, congregants can enjoy a complimentary subscription to j-VOICE Monthly, an award-winning publication whose mission is to provide the Delaware and the Brandywine Valley community with a high-quality resource that educates, informs and inspires our community through a Jewish lens.

**We Grow Stronger TOGETHER**

**Subscribe to j-VOICE Monthly at:**

- [ShalomDelaware.org/publications/jewish-voice-subscription](http://ShalomDelaware.org/publications/jewish-voice-subscription)
- call 302/427-2100 or
- email [Danaw@ShalomDel.org](mailto:Danaw@ShalomDel.org)

**To receive our j-VOICE Weekly email, go to:**

- [ShalomDelaware.org/publications/j-voice-signup](http://ShalomDelaware.org/publications/j-voice-signup)
- call 302/427-2100 or
- email [Danaw@ShalomDel.org](mailto:Danaw@ShalomDel.org)



# **Your Old Shoes Can Help Stamp Out Cancer Recycle Your Shoes**



Did you know that your old, no longer used shoes can help to stamp out cancer? In cooperation with Community Recycling and Stand Up 2 Cancer (SU2C) **Congregating Beth Emeth** is taking part in a unique fundraising drive that we hope you will consider supporting. ***It will cost you no money!*** Participating is simple. **Congregating Beth Emeth** is collecting used shoes for reuse. This international shoe recycling program collects used shoes for distribution to poor regions all over the world (including areas in the USA). For each container filled with shoes a donation will be made to Stand Up 2 Cancer.

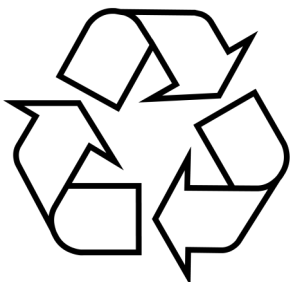
Our community will benefit as well. Not only will your recycled shoes help raise funds for SU2C, it will also keep more shoes out of our local landfills---and free up some space in your closet.

- **Drop off your used shoes in the shoe recycling container in the lobby of Congregating Beth Emeth** As each container is filled they are shipped to the Community Recycling organization for distribution to those in need. SU2C receives a small donation for each container that we fill.
- You get to free up some closet space while helping to reduce landfill waste
- Ask your family, friends, neighbors and co-workers to participate

*Thank you very much for helping to stamp out cancer.*

**DROP OFF YOUR SHOES** to the shoe recycling box in the lobby at Congregating Beth Emeth

for information about SU2C please visit [www.SU2C.org](http://www.SU2C.org)



## Payments Made with Stock

Beth Emeth is now working with LPL Financial to trade securities. Effective immediately, the contact information, DTC and account numbers have changed, although the process is largely unchanged.

Congregants who wish to make a donation or pay their commitment with stock, please follow these instructions:

1. Direct your broker to transfer stock to Beth Emeth's broker, **LPL Financial at 800-724-2120**. They should tell LPL that the stock is to be credited to the account titled **Congregation Beth Emeth (DTC# 0075; Account number: 6772-1990)**.

2. Once the stock is transferred, please notify Jon, Lisa, or Lori in the business office, that you have transferred stock, so that your account may be credited. They will need the following information:

- Your name,
  - Number of shares that you sold,
  - Name of the stock,
- What the stock is paying for (i.e., commitment).

Please call the business office at 302-764-2393 if you have any questions.



## Bar/Bat Mitzvah Parties

When planning your son's or daughter's Bar/Bat Mitzvah parties, please consider using our lovely facilities. Our social hall will accommodate a large group of family and friends. Caterers are welcome; rental is reasonable; there is room to dance, plenty of parking and a great staff to help make your party a success.



## Aluminum Can Tabs

Please continue saving soda, soup and other tabs. You may drop them off in the container located at the front door of the temple. The tabs will be sent to the local Ronald McDonald House. The tabs are sold and the money helps underwrite the wonderful support that the houses provide for sick children and their families.

## Change of Address Reminder

Don't forget to contact the temple office at 302-764-2393 to change your address or you may now change your address online. Simply go to our website at [www.bethemethde.org](http://www.bethemethde.org) and log in as a member. You can manage your account details online. If you have not yet logged in and need a password, contact the office and we will send you a link.

You can also update your telephone number or email address, the same way. Most of the temple correspondence is mailed third class. The post office does not forward any third class mail.



## Book of Memory

Please return all entries by August 18, 2023. If you have not received your Book of Memory form, contact the business office at 302-764-2393 so that one may be mailed to you.

## For the Newborn



Sisterhood has the honor of mailing a beautiful mezuzah to the newborn infants and their happy parents, who are members of our Congregation. Please help Sisterhood perform this "Labor of Love" by calling Rosalyn Lieberman at 302-475-1531 or you may e-mail her at [mom-roz7@aol.com](mailto:mom-roz7@aol.com), with your good news.



## The Congregation Family gratefully acknowledges the following contributions:

*"Nobody is ever impoverished through the giving of charity." ~ Maimonides*

### **RABBI ROBINSON DISCRETIONARY FUND**

In appreciation of second  
night family seder

from **Arthur and Mary  
Charrow, Bristol and  
Boden Posatko**

In loving memory of Paul  
Timmeney from **Elaine and  
Robert Kasowski**

In appreciation of Rabbi  
Robinson from **Esther  
Timmeney**

In memory of my mother,  
Ruth Bergs Merritt. from **Ira  
S. Merritt**

In memory of Paul  
Timmeney from **Judy  
Dorfman**

In memory of Edward  
Coopersmith from **Marilyn &  
Mitch Orlin**

In memory of my mother,  
Madeleine Gariani  
from **Miriam Robinson**

In memory of Florence & Al  
Green from **Penny, Karen &  
Andrew Green**

In memory of Myron Zacker  
from **The Cutler Family**

### **CANTOR PELLEN'S DISCRETIONARY FUND**

In appreciation of Cantor  
Pellen from **Esther**

**Timmeney**

In memory of my  
grandmother, Ruth Bergs  
Merritt from **Jeffrey D. Mer-  
ritt**

In memory of Paul  
Timmeney from **Laurie Ross  
and Steve Zimmerman**

### **ADULT AND YOUTH CHOIR FUND**

In memory of Paul Timmeney  
from **Dayle and Mike Joseph**

In memory of Paul Timmeney  
from **Ellen Johnson &  
Timothy Caspar**

In memory of Paul Timmeney  
from **Ethel & Don Parsons**

In memory of my friend, Paul  
Timmeney, from **Jeffrey  
Merritt**

In memory of Paul Timmeney  
from **Judith & Richard  
Insinga**

In memory of Paul Timmeney  
from **Michele Sands**

In memory of Paul Timmeney  
from **Pam Vanderloo**

In memory of Paul Timmeney  
from **Richard and Judy  
Goldbaum**

### **JOSEPH'S PANTRY**

In honor of Jenna Mackley's  
bat mitzvah from **Jenna's  
grandparents: Margit  
Mackley & Hal and Norma  
Augustine**

**Bruce & Linda Sachais**

In memory of Irving  
Hochhauser from **David  
Margolies & Sheila  
Hochhauser**

In memory of Paul Timmeney  
from **Harriet B. Ansul**

In loving memory of David  
Kursh, Howard Weiss,  
Fred Weiss and Irving  
Kursh from **Jane &  
Raymond Kursh  
Judith Dorfman  
Richard & Judy  
Goldbaum**

In memory of Jane Ruth  
Lieberman from **Rosalyn  
Selber Lieberman &  
Family**

In memory of Paul  
Timmeney with our deep-  
est sympathy,

**Jennifer, Arlene, and  
Harrison Simon**

In loving memory of Robert  
Schnitman from **Judith  
and Richard Insinga**

### **CARING COMMUNITY COMMITTEE**

In honor of Dennis  
Cherrin's special birthday  
from **Dayle and Mike  
Joseph**

In memory of Robert L.  
Kirson, Leah M. Rothner  
and Jacoby Rothner  
from **Phillis R. Lann**

In memory of Ida Ebner  
from **Rose & Alan Ebner**

### **FAMILY ASSISTANCE**

In memory of Andrew  
Miller from **Barbara Miller  
& Family**

**HAROLD & BEATRICE  
SNYDER CAMP  
HARLAM FUND**

Speedy recovery to Owen  
Werkheiser from **Jeffrey  
Merritt**

**JOSEPH ZIMMERMAN  
MEMORIAL MUSIC FUND**

In memory of Joseph  
Zimmerman from **Laurie  
Ross & Steve Zimmerman**  
In memory of Paul  
Timmeney from **Nancy  
Selzer**

**LIBRARY FUND**

In honor of my terrific son,  
**Jeffrey Merritt's 55<sup>th</sup>**  
birthday from Ira Merritt  
In loving memory of Ida B.  
Seiden from Rischa Fishman

**RABBI GRUMBACHER  
DISCRETIONARY FUND**

In memory of Joseph Jacobs  
and Paul Timmeney  
from **Bob & Gloria Jacobs**  
In appreciation of Rabbi  
Grumbacher from **Esther  
Timmeney**  
In memory of Sid Engel  
from **Ethel & Don Parsons**

**RABBI GRUMBACHER  
MUSIC FUND**

In appreciation of the recon-  
secration service for our 50th  
wedding anniversary  
from **Dayle and Mike  
Joseph**  
In memory of Paul  
Timmeney from **Greta & Lar-  
ry Wallis**  
In memory of Paul  
Timmeney from **Judith B.  
Joseph**  
In memory of Mara Tartack  
from **Ray Mendelsohn &  
Phyllis Gramlich**  
In memory of Paul  
Timmeney from **Richard and  
Judy Goldbaum**

**STAT FAMILY GIFT FUND**

In loving memory of mother,  
Lillian S. Feingold from **Jim &  
Phyllis Feingold**  
Wishing a speedy recover to  
Alan Cherrin from **Phyllis &  
Jim Feingold**

**TEMPLE FUND**

In memory of Lawrence P.  
Jacobs from **Anne F. Jacobs**  
In memory of Paul Timmeney  
from **Bob & Sena Garber**  
In memory of Dr. Albert  
Shappell and Regina Varon  
from **Carmen & Stephen  
Shappell**  
In memory of Albert Heisler  
from **Doris S. Heisler &  
Family**  
In memory of Paul Timmeney  
from **Ellen Meyer**  
In loving memory of Paul  
Timmeney from **George &  
Cindy Barber**  
In memory of Lillian Blumen-  
feld and Paul Timmeney  
from **Karen Ann Jacobs and  
Jack Blumenfeld**  
In memory of Paul Timmeney  
from **Leslie Newman**  
In memory of Paul Timmeney  
from **Linda and Bill Jaworski**  
In honor of my father, Dr. Jules  
Levin from **Lisa Levin**  
In memory of Belle Block  
from **Naomi Hershkowitz**  
In memory of Paul Timmeney  
from **Rachel D. Allen**

In loving memory of Randy  
Mendelsohn from **Ray  
Mendelsohn & Family**  
In memory of Paul  
Timmeney from **Robert &  
Kathryn Pincus**  
In memory of Lawrence P.  
Jacobs from **Robin  
Jacobs Freschman &  
Family**  
In memory of Rose Sitzer  
from **Ruth Balick**  
In memory of Paul  
Timmeney from **Sandy  
Lubaroff**  
In memory of Paul  
Timmeney from **Sue Paul**  
In memory of Milton  
Rovine and William  
Erskine from **The Rovine  
Family**  
In memory of Paul  
Timmeney from **Thomas  
Ruffalo**  
In appreciation of Rabbi  
Robinson from **Ursuline  
Academy**

**THE CONGREGATION  
BETH EMETH  
EDUCATION FUND**

In memory of Paul  
Timmeney from **Sarah  
Kittinger**

Visit us at [www.bethemethde.org](http://www.bethemethde.org) or call at 302.764.2393

**Yair D. Robinson, Rabbi • Peter H. Grumbacher, Rabbi Emeritus**  
**Elizabeth F. Pellen, Cantor • Rachel Allen, President**  
**Jonathan I. Yulish, Executive Director**  
**Eliana M. Hall, Director of Life Long Learning**

Address or phone number change, call or email: [lwyzga@bethemethde.org](mailto:lwyzga@bethemethde.org)

Funded by The Milton and Gail Wahl Fund



# CONGREGATION BETH EMETH

300 W. Lea Blvd.  
Wilmington, DE 19802

## SUMMER SHABBAT SATURDAYS

### JUNE

6/3 9:30 TORAH STUDY &  
11 AM ADULT B'NEI MITZVAH SVC  
6/10 SHABBAT HIKE, 10:00 AM  
6/17 TORAH STUDY, 9:30 AM  
6/24 TORAH STUDY, 9:30 AM

### JULY

7/1 TORAH STUDY, 9:30 AM  
7/8 TORAH STUDY, 9:30 AM  
7/15 TORAH STUDY, 9:30 AM  
7/22 SHABBAT STUDY, 9:30 AM  
7/29 TORAH STUDY, 9:30 AM

FOR MORE INFORMATION PLEASE GO TO THE CBE WEBSITE

<https://www.bethemethde.org/> OR CALL THE OFFICE (302)764-2393