



Light of God's House

CONGREGATION BETH EMETH *Orbit*

300 West Lea Blvd, Wilmington, DE 19802 • 302-764-2393 • bethemethde.org

VOLUME XLVII • NO. 8 20 TEVET - ADAR II 5784 • APRIL 2024



A GOOD QUESTION

YAIR D. ROBINSON
(HE/HIM)

As April approaches, we move our attention from the joy of Purim to the preparation for welcoming Pesach, and the Spring and renewal that comes with that season, into our homes. For so many of us, this means a chance at spring cleaning, banishing the *chametz*, all that which is leavened (either fully or symbolically) from our homes. Perhaps more importantly, there's also the excitement of preparing to gather with family and friends around the seder table and retell the story of our freedom from bondage.

That retelling of our story, a *mitzvah* that we must do even if we were all Torah scholars, is perhaps one of the most meaningful rituals in our calendar, in part because of the diversity of methods the retelling takes. There are the special symbols and foods on our tables and on our seder plates, the special songs that we sing, and the various readings of the Haggadah. And we really get into it! Can you do a seder in 15 minutes? Sure, but I know many of us use this as an opportunity to get creative, writing our own songs, creating our own Haggadot, adding more symbols to the seder table (Miriam's cups, oranges, potato peels, etc.) using everything from study guides to puppets to card games and role-playing games to retell the story of our Exodus from Egypt, and often explore how the

SHABBAT SHALOM

Friday, April 5, Kabbalat Shabbat Service, 7:00 PM; The Youth Choir will perform
Or join us at www.bethemethde.org.

Rabbi Robinson will speak

Birthday Blessings for the month of April

**Saturday, April 5, Torah Study, 9:30 AM
Morning Service, 11:00 AM**

The Bat Mitzvah of Tessa Rose Steinberg, daughter of Jennifer Steinberg and Mitchell Steinberg will be celebrated.

"Shemini/Hahodesh," Leviticus 10:1-11;
Ezekiel 45:21-25

Friday, April 12, Marriage Reconsecration Shabbat Service, 7:00 PM, or join us at www.bethemethde.org.

Adult Choir Performs

Saturday, April 13, Shabbat Hike, 10:00 AM
"Tazria," Leviticus 12:1-13:59; II Kings 4:42-5:19

Friday, April 19, Shabbat Service, 7:00 PM
Or join us at www.bethemethde.org.

Rabbi Robinson will speak

Saturday, April 20, Shabbat Study and Schmooze, 9:00 AM, 9:30 AM; 4th Grade Shabbat Service and Brunch, 10:00 AM

"Metzora," Leviticus 14:1-15:33; Malachi 3:4-24
Tuesday, April 23, Passover Service, 11:00 AM;

Community Second Seder, 5:30 PM

Friday, April 26, Shabbat Service, 7:00 PM
or join us at www.bethemethde.org.

Rabbi Robinson will speak

Laurene Eheman will chant Torah

Saturday, April 27, Torah Study and Service Combination, 9:30 AM

"Chol Hamoed Pesach"

Monday, April 29, Passover Yizkor Service, 11:00 AM

themes of the Haggadah reflect what is happening in our world today, including the treatment of the oppressed and enslaved in our contemporary world.

Recently, a colleague was looking for the material to supplement the seder that deals with terrible events of October 7, from which we are still reeling. This calamity, all that has followed the hostages still in captivity, the deaths of innocent Israelis and Gazans, the ongoing war festering like an open wound in Israeli and Jewish society, and the explosion of antisemitism around the world, all give our seder added meaning and urgency. What does it mean to say *b'shana ha-ba'ah birushalayim*, Next Year in Jerusalem? How can we sing, "once we were slaves, but now we are free?" How do we acknowledge this pain we are feeling? Do we add another ritual, another item to our seder plates? Do we read something, like some of the amazing poetry that has come out of Israel since Simchat Torah? Perhaps. But I'm going to suggest another ritual, one far older, that is a part of the traditional Haggadah, a reading that we often skip: *shfoch chamatcha*, "Pour Out Your Wrath."

Toward the end of the traditional retelling of the story, when we open the door for Elijah, usually a happy and hopeful moment, a moment where we imagine a future without oppression or suffering—we are invited to invoke this prayer, itself derived from Psalm 79, which recalls the utter destruction of Jerusalem by the Babylonians; a different kind of bondage and brutality. The Psalm and by extension, the prayer do not hold back in describing our suffering at the hands of 'the enemy'. And so, the prayer asks God: *Pour out Your fury on the nations that do not know You, upon the kingdoms that do not invoke Your name*, a revenge fantasy for an oppressed and powerless people.

You can see why we, as Reform Jews, skip it. It's hard to affirm universalistic values that imagine a day of shared harmony and an end to all inequality while at the same time calling upon God to destroy those who hate us! And what does that mean, to pour out divine fury on 'the nations', our enemies? As my teacher R. Shai Held likes to say, "does this mean the three-year-olds too?" It makes us shudder. As a people acquainted with the long nights of oppression and violence, the idea that we would pray for divine wrath on others feels grotesque.

And yet. How many of us have spent the days since October 7 thinking of the brutality of that day: children killed in their cradles, senior citizens burned alive in their homes, whole families

wiped out, and somehow even worse (as if that could be said). How many of us have found ourselves agog as we read of accounts or even hear from friends and acquaintances, who either do not understand our grief, or seek to minimize it, or even justify the actions of those who raced to kill and maim? How many of us have been bouncing between bleary-eyed astonishment, real fear, and powerful anger, perhaps on a divine scale? And how many of us look at the actions of a paralyzed Israeli government, a government that failed to protect its citizens, seemingly more interested in saying rotten things than actually recovering the hostages from bondage, and a death toll of young Israeli men and women giving their lives to serve their country? Psalm 79, echoing the words of Jeremiah and Lamentations, suddenly feels a lot more relevant to our current anguish.

Believe me when I say that I am not interested in praying for the death of innocent people, to see either Jewish or Arab children buried alive. Such an act would be a *chilul hashem*, a desecration of God's name, and all we hold dear as Jews and human beings. But this year, given everything we have seen, may I suggest we don't skip this reading at our seder tables. This year, with our hearts heavy, we should read the words of the prayer, as uncomfortable as we may feel. We should engage with them, wrestle with them, and allow our wrath and grief, our tears and bewilderment, our questions and our pain pour out of our hearts, so that we can turn again to the story of our ancient redemption, and our hoped-for redemption of *all* innocents, fulfilling the other words of Psalm 79: "Let the groans of the prisoner reach You; reprieve those condemned to death, as befits your name." Amen.

Need a ride? Or help around the house?

Brandywine Village Network is here for you!



Helping you live just where you want . . . at home.

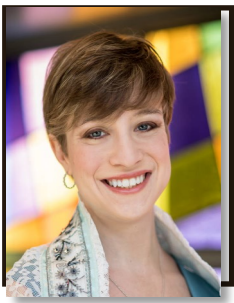
**Care Management
Volunteer Support
Social & Wellness Activities**

*An aging in place initiative of
Jewish Family Services of Delaware*

www.brandywinevillagenetwork.org

302.478.9411





CANTOR'S CORNER

Elizabeth F. Pellen

Jews know the sorrow of great hunger. The Prophet Jeremiah stated: "Happier were the victims of the sword than the victims of hunger, who pined away, stricken by want of the yield of the field" (Lamentations 4:9).

The mitzvah of helping those in need, especially the hungry, is one with which we at Beth Emeth are well acquainted. From our annual efforts at the interfaith meal packing event to our efforts through our very own Joseph's Pantry food pantry, combating hunger in our community is a cause we care deeply about. It is through my involvement with Congregation Beth Emeth that my own passion for hunger awareness and activism has grown.

It seemed like fate when I discovered the Knit for Food knit-a-thon during its initial year in 2021. The knit-a-thon is a natural combination of two of my big passions: knitting and service. The Knit for Food Knit-a-thon is a 12-hour knitting marathon to raise funds and awareness for food insecurity. The money we raise will be equally divided between Feeding America, World Central Kitchen, No Kid Hungry, and Meals on Wheels. Participants raise money by spreading the word and asking people to sponsor their efforts – just as a person raising money via running a 5k or marathon would.

In 2021 and 2022 I participated as an individual and it has truly been one of the most special fundraisings effort, I have been a part of – knitting with thousands of other knitters from around the world to raise enormous funds – over \$265,000 in 2021 and over \$271,000 in 2022 – for the incredible four organizations mentioned above. Last year, knitters and crafters from Congregation Beth Emeth joined me in the cause. Together we raised \$5,000, contributing to a total of over \$340,000 raised by the knit-a-thon. That meant that Feeding America, World Central Kitchen, No Kid Hungry, and Meals on Wheels all received donations of \$85,000. To say I am proud is an understatement.

I am so excited to continue this effort this year, once again leading Team Beth Emeth in the Knit for Food knit-a-thon. I am going to serve as a "team captain" for any knitter/crocheter/crafter who wants to join in the fun and fundraise with me. This year, the knit-a-thon will be taking place on **Saturday, March 23, 2024, from 10:00 AM to 10:00 PM.**

Additionally, this year the knit-a-thon will be taking place on the Saturday of Erev Purim, we will have the opportunity to have a knit-a-thon party that evening at the synagogue during the Adult Purim Shpiel and actually participate in person and will knit/crochet/craft together right in the middle of the synagogue to raise awareness, fundraise, and have a lovely time together. For those who wish to gather to craft in the hours before our evening party, there will be an offsite location to gather! Please feel free to bring friends and family to knit/craft and party with us!

To summarize, there are two ways to participate in the Knit for Food knit-a-thon: Join Team Beth Emeth and pledge to knit/craft for 12 hours and fundraise with us OR be a sponsor and support Team Beth Emeth in this cause! For more information on how to donate, please keep your eye on your email inbox and on the community Facebook group. **If you wish to join TEAM BETH EMETH in this year's Knit for Food knit-a-thon, please email me at cantorpellen@bethemethde.org.** Additionally,



if you want to help plan our in-person knitting party, PLEASE contact me as well!

Looking forward to a phenomenal knit-a-thon!



**BETH EMETH
MEMORIAL PARK**

FAULKLAND RD.

OFF DUPONT RD.

FOR INFORMATION

CALL

302-764-2393



FOCUS EMERITUS
RABBI PETER H. GRUMBACHER

**“Because...
 On Joining a Mission to Israel”**

On March 17 I'll have left for a four-day solidarity mission in Israel. There are scores of such missions. From what I hear, every El Al plane is filled with volunteers. We tried to form a mission of Delaware rabbis and when that did not come to pass, I looked for others. Either their timing was bad for me or the flights didn't fit into my schedule. I finally was able to link up with a group from Hadassah.

At the time I'm writing this Focus Emeritus article, I do not know the details of the itinerary. I do know each day is jam-packed. I heard that many volunteers visit wounded soldiers; speak to the families of hostages; travel to kibbutzim that lost so many of its members in the attack; pick fruits and vegetables; pack FEMA-like packages for the soldiers of the IDF and hear from a wide variety of politicians and others. I hope to have written daily updates for my interim pulpit in Temple Beth El, and somehow I'll share those with you.

My kids ask, “Why are you doing this?” My simple answer has been “Because.” Honestly, it's a difficult question to answer. I know they aren't exactly thrilled that “good ol' dad” is going to a potentially dangerous place, but ever since October 7, I felt I had to go. We've got friends who live in the north which has been attacked by Hezbollah rockets from Lebanon, family members who live on the coast who do not know what the next day will bring, and in general, the citizens of the Jewish State who are indeed “family” though not through blood.

There's another reason. We were supposed to lead another interfaith tour at the end of February. That never got off the ground, and the barbaric attack surely would have ended any hope of a visit even if we had the numbers as we did for so many other tours. All I could think about were memories of the wonderful places we visited; the colorful people we saw; the fantastic sites that are Israel's and Israel's alone; the food and everything else associated

with this land flowing with milk and honey.

The land flowed with blood on that fateful Shabbat and Yom Tov. Should I merely be a “good times friend?” Aren't I obligated in some way to show those people who have sustained a nation to which I could go should there be trouble in the USA, that American Jewry is with them even, maybe especially, when their survival is at stake?

Why am I going? Because...

Shabbat Hike



Join Rabbi Robinson for a meditative hike on April 13 at 10:00 AM at the Brandywine Park, 1080 N. Park Dr., Wilmington, DE 19806, near the Jasper Rose Garden.

Email questions to Rabbi Robinson at rabbirobinson@bethemethde.org.

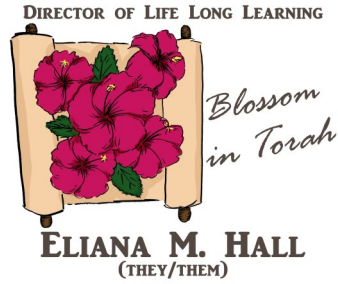
Mazel Tov

...to Sandra and Edward McBride on the birth of their granddaughter, Anna Christina Heck. The proud parents are Karen and Mark Heck.
 ...to Susan and Daniel Kreshtool upon the marriage of their son, Michael Kreshtool to Veronica Everest.

Office Closed

The office will be closed for Passover on April 23 and 29.





This year, during our Wednesday Religious School sessions, our students have been listening to the stories of our matriarchs, patriarchs, and other biblical ancestors, as told by our teachers and me, in weekly installments. The idea from the outset was to present the students with a cohesive narrative about the connection between Am Yisrael - the People of Israel - and Eretz Yisrael - the land of Israel. We are on schedule to leave the land of Egypt just in time for Passover this year, which means that as I type this, we are telling the story of Joseph's time in Egypt.

Every week has led to new questions. Why would Abraham tell a lie? Did Jacob and Esau ever make up? Many of the answers are found in our text or can be discerned by thinking about human nature, but some of these questions are not what you would expect. "And then," said our fourth-grade teacher, "the skinny cows ate the fat ones!" Slowly, a hand was raised by a student with a look of disbelief and confusion. Our teacher paused and called on the student.

"In one bite," she asked, "Or in many?"

"The Torah doesn't say," the teacher answered, "So it's up to you to write that midrash."

I am currently imagining one of the most fascinating *midrashim* ever written. Aren't you? Typically, a *midrash* fills in gaps that our Torah text does not tell us, and it does this not just to inform but to engage the reader or listener and to challenge us to ask questions beyond just what is written. *Midrash* challenges us to place ourselves inside the Torah and ask questions about what we see.

In Exodus 13:8 we read:

וְהִגַּדְתָּ לְבִנְךָ בַּיּוֹם הַהוּא לֵאמֹר בְּעִבּוֹר זֶה עָשָׂה יְהוָה לִי
בְּצֵאתִי מִמִּצְרָיִם:

And you shall explain to your child on that day, "It is because of what הוה did for me when I went free from Egypt."

We are encouraged to speak as though these events happened to us personally. Giv-

en our lives in the 21st century United States, it is a challenging task. But by letting our imagination run wild, we can feel a personal connection to these ancient stories. Our rabbis know that adults are not prone to imaginative play during dinner, so we traditionally put the responsibility of question-asking onto our children to help move the narrative along. Many of us may also have a tradition of asking our children to act out the Ten Plagues. Those of us secure enough in our adulthood may even play with rubber frogs during the retelling, me included.

But what if - stay with me - we all took the time during the seder to ponder whether we are talking about a plague of one giant frog or many frogs? That is a real *midrash*, by the way! What if we stopped to ask what kind of fish are in the Sea of Reeds as it splits or what we imagine ourselves carrying through the desert as we run? This year, during Passover, I am going to relive the Passover story by asking myself all the questions my students have asked me and then making up more of my own. Try it and see how it goes. If you need a great question to start off, here are two more from our students. How did people carry water back then? Did they have socks?

Go forth from bondage and question everything.



Quote of the Month

"Love transforms us. It makes us beautiful in the eyes of those who love us. It makes us real"

Rabbi Jonathan Sacks



PRESIDENT'S MESSAGE



RACHEL ALLEN
(SHE/HER)

We come to the part of our Seder, the candles have been lit, we have told the story, we have read the four questions, we have sung, we have drunk two cups of wine, and have poured the third, but now...now we leave the table.

We race to the front door.

We swing the door open as fast as we can, all while shouting: "Welcome Elijah!!"

And we find...Howard Rosenstock...standing outside the door about to ring the doorbell.

Howard was my Aunt Debbie's boyfriend when she was in High School. His family had finished their seder and he was coming over for some extra dessert. This is my favorite family Passover story. We tell it every year as we pour the cup for Elijah and every year as we welcome Elijah at the open door, we also say "Welcome Howard." The story has even made it into our family's Haggadah (seriously, it is there, written as a footnote).

Passover, for many families, is one of the extreme holidays. Dining room tables are opened to their maximum capacity, extra tables are added to the end so that they stretch from the dining room into the living room. In my family, my father always brought two or more wayward students that didn't have a place to go. Cousins that were going to school nearby and couldn't get home would be present. It was loud, joyous, but most importantly, it was welcoming.

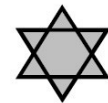
At Passover we remember that it is a mitzvah to welcome the stranger, for we were strangers in the land of Egypt. This seems to be such a simple mitzvah to complete. During Covid, we started to realize that conscious effort is required to fulfill this mitzvah. We still found ways to welcome while staying apart.

Now, however, just as we are coming back together, we find ourselves in a world that feels less welcoming to us. There are those that we had welcomed to our tables before, suddenly feel like strangers again. People that we thought were our friends seem to have turned

on us. We have become wary of strangers. We have become wary of identifying as Jews, let alone letting others into our space.

And yet, we cannot stop welcoming the stranger. We cannot shut our doors. We must continue to proudly identify as Jews, and we must continue to have civil conversations with each other. The mitzvah of welcoming the stranger becomes even more important in times like these when the world seems so unwelcoming to us. Just as we learned during Covid, the times when it is so difficult to be welcoming, those are the same times that it is vital to be welcoming.

I can still see the long table laid out in my grandmother's house. I can hear the noise and joy. I remember that the noise included difficult conversations, conversations where not everyone agreed with one another, but everyone was welcome, and everyone would welcome Howard right along with Elijah. I wish that everyone in our Beth Emeth family can find some way this Passover, to welcome a stranger. After all, when you throw open your door with joy, you never know who you may find standing there.



Schoenberg Memorial Chapel

*Dedicated to serving our community
with Compassion, Competence and Dignity*

519 Philadelphia Pike
302-762-0334

April 2024

Sunday	Monday	Tuesday	Wednesday	Thursday	Friday	Saturday
	1 (22 Adar II)	2 (23 Adar II) 12:00pm Stocking for Joseph's Pantry 3:00pm Joseph's Pantry Open	3 (24 Adar II) 7:00pm Choir Rehearsal	4 (25 Adar II)	5 (26 Adar II) Youth Choir Performs 7:00pm Kabbalat Shabbat Service 8:00pm Oneg	6 (27 Adar II) Sh'mini 9:30am Torah Study 11:00am Bat Mitzvah of Tessa Steinberg 11:00am Shabbat Service
7 (28 Adar II)	8 (29 Adar II)	9 (1 Nisan) 12:00pm Stocking for Joseph's Pantry 3:00pm Joseph's Pantry Open 7:00pm Board Meeting	10 (2 Nisan) 4:45pm Hebrew School 7:00pm Choir Rehearsal	11 (3 Nisan) 7:00pm Marriage Reconnection Rehearsal	12 (4 Nisan) Marriage Reconnection Adult Choir Performs 7:00pm Shabbat Service 8:00pm Oneg	13 (5 Nisan) Tazria 10:00am Shabbat Hike
14 (6 Nisan) 9:00am Religious School 9:30am Books and Bagels 11:00am Caring Committee Meeting	15 (7 Nisan)	16 (8 Nisan) 12:00pm Stocking for Joseph's Pantry 3:00pm Joseph's Pantry Open	17 (9 Nisan) 4:45pm Hebrew School 7:00pm Choir Rehearsal	18 (10 Nisan)	19 (11 Nisan) 7:00pm Shabbat Service 8:00pm Oneg	20 (12 Nisan) M'tzora 9:30am Torah Study & Service Combination 10:00am 4th Grade Shabbat Service and Brunch
21 (13 Nisan) 12:00pm Knitting Club 12:00pm Chess Club	22 (14 Nisan) Erev Passover	23 (15 Nisan) Passover Business Office Closed 11:00am Passover Service 5:30pm Community Second Seder	24 (16 Nisan) Chol Hamoed Passover 4:45pm Hebrew School	25 (17 Nisan) Chol Hamoed Passover 12:00pm Stocking for Joseph's Pantry 3:00pm Joseph's Pantry Open	26 (18 Nisan) Chol Hamoed Passover 7:00pm Shabbat Service 8:00pm Oneg	27 (19 Nisan) Chol Hamoed Passover 9:00am Shabbat Study and Schmooze
28 (20 Nisan) Chol Hamoed Passover 9:00am Religious School	29 (21 Nisan) Passover Yizkor Business Office Closed 11:00am Yizkor Service	30 (22 Nisan) 12:00pm Stocking for Joseph's Pantry 3:00pm Joseph's Pantry Open				

In memory of the departed whom we now remember. We share in the recent bereavement suffered by members of our temple family and extend our sincere condolences to:

Sandra and Edward McBride on the death of Ed's mother,
Mary Christina McBride.



Sisterhood Happenings

Mahjong Monday - Join us from 11:00 AM to 1:00 PM on April 15, 2024. Play the fun and exciting game of Mahjongg! Beginners are welcome! We'll try to break up into groups of four with beginners grouped together and more experienced players grouped together. Please RSVP to Missy Rosenthal at mmrosenthal@comcast.net so we know how many people to expect, how many sets we will need and if you consider yourself a beginner or experienced player. If you have a set and mahjongg card(s), please bring them!! We'll provide snacks and drinks!!



2024 Sisterhood Donor Event - Sunday, May 5 at 12:00 PM.
The Word Mavens Are Coming to Beth Emeth!! Join Beth Emeth Sisterhood for our 2024 Donor Event! Join us for a delicious catered brunch, come see old friends, meet some new friends, and help support Beth Emeth Sisterhood for our biggest fundraiser of the year with what is sure to be a funny, fabulous and unforgettable program! Invitations will be sent out in March! Hope you can join us! Bring your family and friends too!! We'll be collecting new books at the event to donate to the Ronald McDonald House of

Delaware.

For more information on The Word Mavens, check out their website: www.thewordmavens.com

Volunteer Opportunity - Sunday May 5 at 10:30 AM (Before the Donor Event) at Beth Emeth .

We need volunteers to help us with a PACKING PARTY for Dignity Grows! Dignity Grows is an organization that offers hope, empowerment and inspiration. It serves neighbors in need who are unable to afford comprehensive and menstrual hygiene products and raises awareness for menstrual and hygiene equity! Everything that goes into the totes has already been donated. The organization just needs volunteers to put these totes together! Anyone can join us - you do not need to be member of Beth Emeth Sisterhood! Bring your family and friends!! For more information on this incredible organization, check out their website at www.dignitygrows.org.

Please RSVP to Missy Rosenthal at mmrosenthal@comcast.net if you are able to join us or if you have any questions about the event! The packing party should last no more than 30-60 minutes (depending on how many volunteers we have!!)



The Movies at Noon is Back With Sue Paul!!!

Once a month on Wednesdays from 12::00 to 1:30 PM at Congregation Beth Emeth join us.

Spring is right around the corner so that means Sue Paul will be back in town to restart our favorite movie discussions!! Here is our upcoming list of movies to discuss and the dates on which we'll meet!! We hope you can join us for some or all of them!!

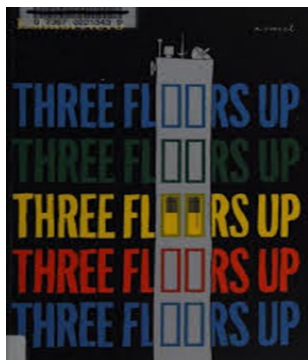
Wednesday, April 17 - **You Are So Not Invited To My Bat Mitzvah** (Netflix)

Wednesday, May 22 - **The Believer** (with Ryan Gosling) (Amazon Prime)

Wednesday, June 26 - **The Stranger Among** (Amazon Prime) Watch the movies on your own before we meet and we'll discuss the films together. Sue Paul will moderate our discussion. Bring a sandwich for yourself to eat and we will provide drinks and dessert!! We'll meet in the Beth Emeth library. RSVP for these events to Missy Rosenthal at mmrosenthal@comcast.net.



Sisterhood Books and Bagels - Discussions will begin at 9:30 AM. There is a cover charge of \$5 (or \$4 plus a nonperishable item for Joseph's Pantry) for those attending in person. RSVP to Heather Margolin by emailing her at h.m.margolin@gmail.com or 302-477-0737 at least one week prior to the event. We look forward to seeing you there! April 14, 2024: "Three Floors Up," by Eshkol Nevo (Author), Sondra Silverston (Translator) Set in an upper-middle-class Tel Aviv apartment building, this best-selling and warmly acclaimed Israeli novel examines the interconnected lives of its residents, whose turmoil, secrets, unreliable confessions, and problematic decisions reveal a society in the midst of an identity crisis.



National Kidney Donation

Several years ago, Beth Emeth participated in the Gift of Life Program, which sought to match people with folks in need of a bone marrow transplant. Similarly, today one of our congregants has been diagnosed with Chronic Kidney Disease (CKD), and is looking for a kidney donor. We know the importance of the Jewish value of *pikuach nefesh*. If you are interested in becoming a living donor, whether for this member of our congregational family or anyone else, you can go to our congregant's story and learn more about living donors, or you can go to the website at www.nkr.org/KZF837. You can also contact the member directly at cin-dyjoneil@comcast.net or 302-691-7018.

Beth Emeth Community Seder

Please join Congregation Beth Emeth for our **Second Night Community Seder** on Tuesday, April 23, 2024, at 5:30 PM. The seder will be led by Beth Emeth clergy and is open to Beth Emeth members and the wider Jewish community.

Make your reservations now! Dinner is \$36 per person. Children 6-11 are \$12; Children under 5 are FREE. The seder includes a traditional seder menu with matzo ball soup, gefilte fish, main course, dessert and beverages. Vegan and vegetarian options will be available. RSVP online at <https://congregationbethemeth.shulcloud.com/event/community-second-seder.html> or by calling the office at 302-764-2393. You may also mail a check to Congregation Beth Emeth, 300 W. Lea Blvd., Wilmington, DE, 19802. Please make your reservation and payment by Friday April 12, 2024.



List of Funds to Donate to at CBE

ABLEMAN LITURGICAL ARTS FUND - Provides programs, contemporary worship or special musical events during Jewish Music Celebration.

PAUL AND LILLIAN CRAMER

MEMORIAL FUND - To purchase equipment, and to enrich school educational programs; to fund capital improvements and maintenance to Temple property.

FAMILY ASSISTANCE - For needy families.

HARRY AND ESTHER JACOBS

MEMORIAL FUND - For Adult Education and other special programs.

KEIL-HERRMANN MEMORIAL FUND - To support annual Scholar-in-Residence lecture series.

BERNARD KRESHTOOL MEMORIAL FUND - For Living Judaism programs such as Adult Jewish Education.

MILTON & HATTIE KUTZ SCHOLARSHIP FUND - To help defray expenses of our youth at Jewish camps, conclaves, Gratz High School, as well as school tuition.

EDITH LABOVSKY MEMORIAL FUND FOR STUDENT VISITS TO ISRAEL – Assistance for Youth and Family Education.

DR. LEO AND JULIA B. BLUMBERG SCHOLARSHIP FUND - For the same such purposes as the **KUTZ FUND**.

DIRECTOR OF LIFE LONG LEARNING DISCRETIONARY FUND - for the Religious School

LIBRARY FUND - To purchase books for the library.

MARGARET MAY MEMORIAL JEWISH FAMILY LIFE EDUCATION FUND - For Jewish educational programs.

MAZON - A Jewish Response to Hunger - fundraising to help solve the problem of hunger.

RAYMOND AND ESTHER MCDONALD MEMORIAL FUND - For activities relating to the State of Israel.

RABBI GRUMBACHER MUSIC FUND - To promote Jewish music with guest musicians and purchase music.

PRAYER BOOK FUND - funding for prayer book and bookplates call the office for pricing.

RABBIS'/CANTOR'DISCRETIONARY FUNDS - To support Jewish causes, pursue acts of loving kindness, etc. **Rabbi and Cantor has a separate fund.**

ROSENTHAL JEWISH BOOK MONTH LECTURE FUND - To promote Jewish Literature and a biannual lecture.

SOCIAL ACTION FUND - To be used at the discretion of the Social Action Committee for local groups in need i.e. Sojourner's Place.

TEMPLE FUND - Undesignated contributions - for general congregation purposes.

VANCE BOLEN MEMORIAL FUND - To support Cadet Aides.

PEARL K. BREGMAN MEMORIAL FUND - fund available for use by the Caring Community Connection Committee.

ALICE SCHIFF MEMORIAL FUND – needs recommended by the Endowment Fund Committee and the Board of Trustees.

ADULT AND YOUTH CHOIR FUND – to promote and support the Adult and Youth Choir needs.

LEONA ELKINS SCHOLARSHIP FUND – awarding need based scholarship to students of CBE studying Hebrew or advanced Hebrew Studies at CBE, Gratz Hebrew High School or education programs in Israel.

RABBI HERBERT E. DROOZ & FLORENCE Z. DROOZ FUND – awards for scholastic excellence.

JUDGE STIFTEL AND YAFFEE FUND – needs recommended by the Endowment Fund Committee and the Board of Trustees.

THE HARRY & BLANCHE WOLPERT FUND - Family assistance fund .

STAT FAMILY GIFT FUND- Religious School camp and Israel trip scholarships

HAROLD & BEATRICE SNYDER CAMP HARLAM FUND- For Camp Harlam Scholarships.

MILTON & GAIL WAHL FUND - subsidize the publishing of The Orbit.

THE MEMBERSHIP ASSISTANCE FUND - to assist families or individual to pay the minimum dues.

CARING COMMUNITY COMMITTEE – To support the Beth Emeth community with care baskets, driving needs, food, cards, etc...

THE CONGREGATION BETH EMETH EDUCATION FUND – or supplies and programs for educational needs.

THE IRENE PACKLES MEMORIAL FUND FOR HIGH SCHOOL SENIORS- Contributions made to this fund will enable our high school students to make the transition to college more easily, with regard to their Jewish identity.

THE LARRY ISAKOFF MUSIC PERFORMANCE FUND- income from this fund will be used to pay for musical events such as cantorial and choir concerts, musical plays, etc.

YOUTH AND FAMILY PROGRAMMING – for youth and family programs.

THE HOLOCAUST GARDEN MAINTENANCE FUND – Maintenance of the Holocaust Garden

THE TORAH REPAIR FUND – To repair the Torah.

THE SCHOLARSHIP FUND - to provide funds for Religious School and Camp scholarships.

HOSPITALITY FUND – to help with noshes, onegs and other events

JOSEPH'S PANTRY (Beth Emeth Food Pantry) – to provide funds for the purchase of food in order to supplement in-kind donations

JOSEPH ZIMMERMAN MEMORIAL MUSIC FUND – to fund the hiring of a professional cellist during Kol Nidre.

Notice

All contributions sent to the temple should be made out to “**Congregation Beth Emeth.**” If a special fund is desired, its name should be noted on the memo line or in an accompanying letter. Thank you for your cooperation.

A Note about Contributions

We welcome all contributions. If you wish the contribution to be listed in *The Orbit*, there is a minimum donation of \$10. This also covers the mailing of ONE acknowledgement card. Please be sure to include the address if the person(s) are not members of Congregation Beth Emeth. The card is mailed when the check is received.

It is important that, when you send in a donation, you write specifically how you want the donation listed. Please include a note with your check, printed clearly or typed, stating exactly how you want the contribution to read. For example: Mary and John Doe in memory of..., Mr. and Mrs. John Doe in honor of..., Mr. John and Mrs. Mary Doe in beloved memory of....

Please remember to write legibly and to list which funds you would like your donation to go to. Please make your check payable to Congregation Beth Emeth. Also, *The Orbit* usually runs three weeks ahead of schedule so it may take three weeks for your donation to appear in *The Orbit* from the date you mail it. Thank you for your cooperation.





Your Old Shoes Can Help Stamp Out Cancer Recycle Your Shoes



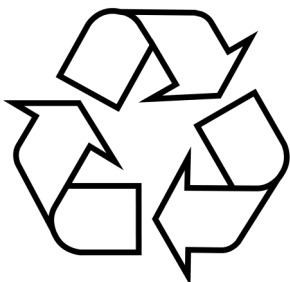
Did you know that your old, no longer used shoes can help to stamp out cancer? In cooperation with Community Recycling and Stand Up 2 Cancer (SU2C) **Congregating Beth Emeth** is taking part in a unique fundraising drive that we hope you will consider supporting. ***It will cost you no money!*** Participating is simple. **Congregating Beth Emeth** is collecting used shoes for reuse. This international shoe recycling program collects used shoes for distribution to poor regions all over the world (including areas in the USA). For each container filled with shoes a donation will be made to Stand Up 2 Cancer.

Our community will benefit as well. Not only will your recycled shoes help raise funds for SU2C, it will also keep more shoes out of our local landfills---and free up some space in your closet.

- **Drop off your used shoes in the shoe recycling container in the lobby of Congregating Beth Emeth** As each container is filled they are shipped to the Community Recycling organization for distribution to those in need. SU2C receives a small donation for each container that we fill.
- You get to free up some closet space while helping to reduce landfill waste
- Ask your family, friends, neighbors and co-workers to participate

Thank you very much for helping to stamp out cancer.

DROP OFF YOUR SHOES to the shoe recycling box in the lobby at Congregating Beth Emeth



for information about SU2C please visit



Orbit Submission

Article for the May 2024 issue of the Orbit are due on Wednesday, April 3, 2024 at 9:00 AM. Please email articles to Lori at lwyzga@bethemethde.org.



Shabbat Study and Schmooze

Join Rabbi Robinson on Saturday mornings on April 20 and May 25 at 9:00 AM, for in-person (NO ZOOM) brunch and Torah study at Congregation Beth Emeth. Bagels and shmeer, coffee, and a chance to study together and be in community together, live and in-person.

The 2024 Women's Community Seder
Hosted by Congregation Beth Shalom



An Evening of Inspiration & Camaraderie
to honor Women's Resilience & Legacy

When:	Cost:
Sunday, April 14, 2024	\$40 General Admission
5pm Check in & Chat	\$80 Friend of Miriam*
5:30pm Our Seder	\$20 Teenagers

Delicious buffet dinner featuring chicken and other holiday delicacies. We can accommodate vegetarians, vegans and pescatarians if given advanced notification upon registration.

Advanced Registration Required
R.S.V.P. April 6, 2024

**Friends of Miriam will receive a signed print of this year's artwork*



Almond Butter and Jelly Slice Passover Dessert By Jamie Geller

INGREDIENTS

- 1 (8-ounce) container Temp Tee Whipped Cream Cheese
- 1 cup almond butter
- 2 tablespoons powdered sugar
- 1 teaspoon vanilla extract
- 1 store-bought chocolate macaroon pie shell
- 1 (13-ounce) jar cherry or strawberry jam

Preparation

1. In the bowl of a stand mixer, combine cream cheese and almond butter and mix until smooth and combined.
2. Add sugar and vanilla and mix well.
3. Carefully spread almond butter mixture on top of macaroon pie shell in an even layer. Cover with plastic wrap and freeze for 30 minutes.
4. Spread an even layer of jam across the top of almond butter mixture, cover and freeze at least 2 hours or overnight.
5. Remove from freezer 30 minutes before serving and refrigerate.
6. Slice into 8 slices and remove with a spatula. Serve immediately. Serves 8.



The Congregation Family gratefully acknowledges the following contributions:

"Nobody is ever impoverished through the giving of charity." ~ Maimonides

**RABBI ROBINSON
DISCRETIONARY
FUND**

In appreciation of Rabbi
Robinson from **Dr.**

Francisco J. Brizuela

In memory of Jonathan
Joseph from **Joan
Joseph**

In memory of Millie
Bobuk from **Lisa Schrier**

In memory of Julian
Agoos from **Susan &
Stephen Herrmann**

In memory of Ronald J.
Cutler from **The Cutler
Family**

**ADULT AND YOUTH
CHOIR FUND**

In loving memory of my
wife, Mara R. Tartack
from **Ira Tartack**

In memory of Abraham
Sands from **Michele
Sands & Family**



**CARING COMMUNITY
COMMITTEE**

In memory of Nathan
Ebner from **Rose and
Alan Ebner**

In memory of Jared
March and Estelle Glick
from **Sue Paul**

JOSEPH'S PANTRY

In memory of Harold
Schlesinger and Michelle
Schlesinger from **Fern
and John Percheski**

In loving memory of
Peter Schnitman
from **Judith Insinga**

In memory of Rissie
Zeenberg from **Judy
Dorfman**

In memory of Alfred
Selber from **Rosalyn
Selber Lieberman and
Family**

In memory of Barbara
Friedman from **Rose &
Alan Ebner**



LIBRARY FUND

In memory of Deborah
Tollin from **Mark and
Shelley Stein**

In memory of Leonard
G. Weinstock
from **Susan & Mal-
colm Cobin**

MAZON

In memory of Israel
Noznesky, Ida
Noznesky and Marvin
Noznesky from **Ann D.
Hoffman, Alan &
Doug Noznesky**

**PAUL & LILLIAN
CRAMER MEMORIAL
FUND**

In memory of Henry
Noskow
from **Henrienne
Schneider**



**RABBI GRUMBACHER
DISCRETIONARY
FUND**

In memory of Robert Wasserman from **Mr. & Mrs. Bill Wasserman**

TEMPLE FUND

In memory of Ida Budin from **Ethel & Don Parsons**

In memory of Alan Kanofsky, Burton Kanofsky and Sadie Kanofsky from **Eugene Kane**

In memory of Iris Jacobs from **Karen Jacobs & Jack Blumenfeld**

In memory of Janice Antinoph from **Richard Antinoph**

In memory of Albert Suher from **Rusty & Lynne Suher**

**THE CONGREGATION
BETH
EMETH EDUCATION
FUND**

In memory of Howard Newman from **Ann P. Newman**



Joseph's Pantry



Joseph's Pantry is an emergency food pantry hosted by Congregation Beth Emeth. Its goal is to provide a three-day supply of food and toiletries on an emergency basis, for residents of Wilmington, and specifically, for those in need, in the Ninth Ward. The hours of operation are: Tuesday afternoons, from 3:00 PM until 6:00 PM. The pantry is always in need of donations and volunteers. Some of the items that are currently on the pantry's Wish List are: toilet paper, paper towels, napkins, canned vegetables, pasta, pasta sauce, macaroni and cheese, canned fruit, laundry detergent, and menstrual products. Donations can be dropped off at Beth Emeth or can

be ordered online and shipped directly to the synagogue. Thank you for your support.



Visit us at www.bethemethde.org or call at 302.764.2393

**Yair D. Robinson, Rabbi • Peter H. Grumbacher, Rabbi Emeritus
Elizabeth F. Pellen, Cantor • Rachel Allen, President
Jonathan I. Yulish, Executive Director
Eliana M. Hall, Director of Life Long Learning**

Address or phone number change, call or email: lwyzga@bethemethde.org

Funded by The Milton and Gail Wahl Fund



CONGREGATION BETH EMETH

300 W. Lea Blvd.
Wilmington, DE 19802



JOIN US FOR CBE COMMUNITY SECOND SEDER

TUESDAY EVENING 4/23/24 5:30 PM—8 PM

ADULTS \$36

CHILDREN 6-11 \$12

CHILDREN 5 AND UNDER *FREE*

GO TO THE CBE WEBSITE TO MAKE YOUR RESERVATION

<https://congregationbethemeth.shulcloud.com/event/community-second-seder.html>