



Light of God's House

CONGREGATION BETH EMETH

Orbit

300 West Lea Blvd, Wilmington, DE 19802 • 302-764-2393 • bethemethde.org

VOLUME XLVI • NO. 9 • 10 IYAR - 11 SIVAN 5783 • MAY 2023



A GOOD QUESTION

YAIR D. ROBINSON
(HE/HIM)

For months now, when people asked me about how I was dealing with my son being older (he turns 16 this summer), I've always had the same reflection: I can cope with him being in his sophomore year of high school. It doesn't faze me that he took Driver's Ed this year and will be getting his permit this summer. The idea of taking him on college tours (in fact we had our first during his spring break), seems perfectly natural and expected. But knowing that he's going on his NFTY Israel trip this summer, and processing that he's being confirmed this spring, is giving me a lot of feelings. Thinking of him—and his class—standing on the bimah in white robes at the end of May, reciting the Ten Commandments and singing the Confirmation Hymn, and knowing his class picture will go on the wall of the congregation, well, it's a lot to take in; a lot to process.

I've been participating in confirmation services for twenty years (and have been teaching confirmation classes for longer than that). For me, while the service has always been an opportunity to celebrate our students and their learning—a natural extension of Shavuot's commemoration of the receiving of the Torah at Mount Sinai—it's the classes that have always been my favorite part. I love learning with

SHABBAT SHALOM

Friday, May 5, Kabbalat Shabbat Service, 7:00 PM

Or join us via: <https://www.youtube.com/channel/UCDGcjXfeW866IGiUCWEbkuw>

Jenna Mackley will bless the Shabbat Candles
Eliana Hall will speak

Birthday Blessings for the month of May

**Saturday, May 6, Torah Study, 9:30 AM,
Morning Service, 11:00 AM**

The Bat Mitzvah of Jenna Mackley, daughter of amy and Joseph Mackley, will be celebrated.

"Emor," Leviticus 23:1-8; Ezekiel 44:15-19

Friday, May 12, Sisterhood Shabbat Service, 7:00 PM

Sarah Kittinger will bless the Shabbat Candles

Or join us via: <https://www.youtube.com/channel/UCDGcjXfeW866IGiUCWEbkuw>

**Saturday, May 13, Torah Study, 9:30 AM,
Morning Service, 11:00 AM**

The Bat Mitzvah of Eva Costas, daughter of Deborah and Evan Costas will be celebrated.

Join by Zoom: <https://zoom.us/j/531825441>.

"Behar/Behukkotai," Leviticus 25:1-10; Jeremiah 17:5-8

Friday, May 19, Shabbat Service, 7:00 PM

Or join us via: <https://www.youtube.com/channel/UCDGcjXfeW866IGiUCWEbkuw>

Jamye Cole will bless the Shabbat Candles
Honoring Rabbi Michael Kramer on the
50th Anniversary of his Ordination.

**Saturday, May 20, Shabbat Torah Study
and Schmooze 9:00 AM, Morning Service, 11:00 AM**

"Bamidbar," Numbers 1:1-4:20; I Samuel 20:18-42

**Friday, May 26, Confirmation Shavuoth
Shabbat Service, 7:00 PM**

Or join us via: <https://www.youtube.com/channel/UCDGcjXfeW866IGiUCWEbkuw>,

The Parents of the Confirmands will bless the
Shabbat Candles

**Saturday, May 27, Torah Study 9:30 AM,
Morning Service, 11:00 AM**

The Bar Mitzvah of Asher Rosenberg, son of Stephanie and Todd Rosenberg, will be celebrated.

Join by Zoom: <https://zoom.us/j/531825441>.

"Shavuoth II"

these young people, who I got to know initially during their b'nai mitzvah preparations a few years before, but really developed a rapport and relationship this year. Many of my fondest experiences as a rabbi—engaging in meaningful dialogue on different issues, taking the kids on trips to New York or DC as part of the Religious Action Center's L'Taken experience, answering challenging questions—all come out of the confirmation experience. And this class has been no different. I've known many of these kids since they were in preschool (and at least one since he was born!) and would like to think I've cultivated real connections with them and their families. And knowing what these teens have been through with the end of their middle school years—and many of them, their *b'nai mitzvah*—dominated by the Covid pandemic. Theirs has been a difficult experience, one that still casts a shadow on their high school years, but they have made it through to this point, and it's been an honor learning and working with them.

And now, on Friday, **May 26**, at 7:00 PM, they will stand on the bimah—my son included—in white robes, with flowers, to sing the Confirmation Hymn, read the Ten Commandments, and will have their picture taken like so many classes—and many of their parents—before them, to become a permanent part of our identity as a congregation. Like me, many of you have watched these children grow; I hope you will make a point of coming out that night and celebrating with them as they affirm their commitment to our People, Torah, Mitzvot, and a commitment to making this world better.

Mazel Tov!

...to Shelley and Mark Stein on the birth of their granddaughter, Lea Rose Zaringham. The proud parents are Mollie Stein and Jason Zaringham.

Annual Meeting

The Congregation Beth Emeth 2022-2023 Annual Meeting and lunch will be held on Sunday, May 21 at Noon. Please join your fellow congregants to celebrate the year and to elect the new board of trustees.



MAZAL TOV to the Confirmands of 5783

ALAINA GRACE COLE child of Matthew & Jamye Cole
ELISA KATHLEEN COSTAS child of Evan & Deborah Costas
HAYLEY ROSE ENG child of Sharie & Brian Eng
JACLYN P. MARKOWITZ child of Sandy & Jeffrey Markowitz
LILLIAN PEARL NATHANS child of Aaron & Debra Nathans
ELISHAI YOSEPH ROBINSON child of Rabbi Yair & Marisa Robinson
OWEN FRANKLIN WERKHEISER child of Rachel & Gregory Werkheiser

*We invite you to celebrate their confirmation, May 26, 2023
during Shabbat Services at 7:00 p.m.*

Oneg to follow

Quote of the Month

"Community is society with a human face."
Rabbi Jonathan Sacks

Need a ride? Or help around the house?
Brandywine Village Network is here for you!



Helping you live just where you want . . . at home.

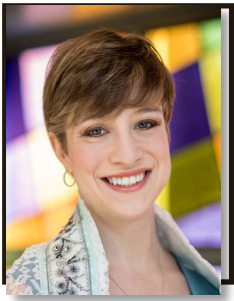
**Care Management
Volunteer Support
Social & Wellness Activities**

*An aging in place initiative of
Jewish Family Services of Delaware*

www.brandywinevillagenetwork.org

302.478.9411





CANTOR'S CORNER

ELIZABETH F. PELLEN
(SHE/HER)

A common word used to describe those who love to craft, especially those who craft with yarn and fabric, ie. Knitters, crocheters, quilters, seamstresses, and tailors etc., is the word “maker.” As many of you know, in March, I lead a team of 18 makers from Congregation Beth Emeth in participating in the Third Annual Knit for Food Knit-a-thon. I am beyond proud to say that on March 26, 2023, those 18 Makers, combined with over 600 others across the world, became true CHANGE MAKERS. I am dedicating my Orbit article to celebrate the efforts of our wonderful Team Beth Emeth and the extremely supportive family and community that helped make our impact possible.

In total, the knit-a-thon raised \$340,000 to combat food insecurity, according to the data given to us by the four organizations we are supporting – Feeding America, No Kid Hungry, World Central Kitchen, and Meals on Wheels – this money equates to **3,400,000 meals** to those in need.

Moreover, thanks to the hard-working efforts of our team members (listed below) and the generous contributions of members of their families and friends and of many members of Congregation Beth Emeth: Team Beth Emeth raised a total of \$5157 – making it the fifth largest contributing team in the knit-a-thon. Single handedly, Team Beth Emeth is providing the funds for over 51,500 meals to those in need. I could simply not be prouder.

On top of raising money for those in need, these Makers of Beth Emeth found shared joy, passion, and fellowship in this effort! We even had a group from Colorado (Jill Miller who lives out West, grew up at CBE and got her knitting club involved!) I know there is excitement for us to continue to gather and craft together again soon and to hopefully participate in future service projects like this in the coming years. I am so proud of my team and my community; I know you are as well! Please give them a round of applause (or a just hearty acknowledgement when you see them next!) Team Beth Emeth: Irene Abosch; Rachel Allen; Elisha Caplan; Judy Dorfman; Sarah fisher; Jamie Flynn; Debra Getz; Jan Goodman; Dana Horowitz; Phyllis Lann; HarrietAnn Litwin; Jill Miller; Cindy O’Neil; Elizabeth Pellen; Fern Percheski; Elizabeth Rich; Michele Sands; Lisa Schrier and Ray Wachsmann.



**BETH EMETH
MEMORIAL PARK**

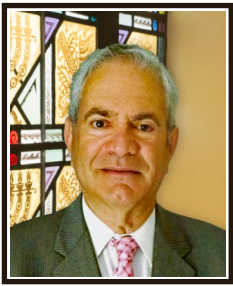
FAULKLAND RD.

OFF DUPONT RD.

FOR INFORMATION

CALL

302-764-2393



FOCUS EMERITUS

RABBI PETER H. GRUMBACHER

A Picture is Worth a Thousand Words

Strolling Down the Photos of
Confirmation Classes
with Rabbi Emeritus Peter Grumbacher
Monday, May 15 at 4:00 PM

Just a few years after my retirement, I took a dozen or so congregants down "Memory Lane" to show how the Confirmation class photos told us about our movement and our congregation. We also were privy to the "secrets" of the building's past and present.

I invite you to join me again whether or not you were among that first group of people. There's always something new, and even in the repetition of important (and not-so-important) facts, we can get an idea of the history of our 116-year-old Beth Emeth and how that history and that of Reform Judaism often, but not always, paralleled each other.

Who were the rabbis? Which rabbi died as a result of falling off a horse? Which rabbi served as Chaplain in the military? Which rabbi made the girls swoon (hint: not me)?

Who were the "kids"? Which ones became leaders of the congregation and our movement? Which individuals gave me a rough time? Which classes had the perfect chemistry to inspire even their teachers? Which classes had the perfect chemistry to create a nuclear reaction?

Yes, a picture is worth a thousand words, as the expression goes. While I (probably) won't offer that many words, I hope you'll be able to get a handle on the past and how it would impact the present, even the future. So, walk with me down the century from the 1920s to the 2020s. Who knows? YOU might be the answer to some of those questions!

My Fourth Interfaith Tour of Israel: Part Two

So we're back...for quite a while now...and the survey we asked the participants to fill out

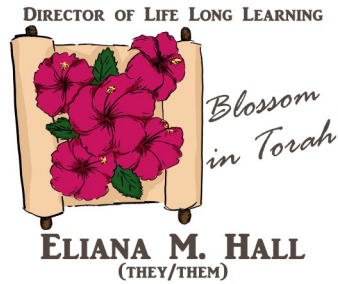
came back with this phrase used a number of times: *"This was a trip of a lifetime!"* How happy we are that the thirty-two participants not only were fascinated by what they experienced, but that they bonded. We're having a "reunion" and except for those who came from Virginia, Colorado and California, all the rest are looking forward to joining with "new friends."

Some of you might recall that on my last interfaith tour we visited Petra (what an experience!), and that I fell off a donkey (**what an experience!**). This time I rode a mule, a little higher off the ground than a donkey. The young man who guided the animal was far more attentive this time. He assisted me as I slid off the mule's back, keeping me from hitting the ground. But donkey or mule, golf cart or camel, or just plain old walking which we did for most of the six miles in the canyon, *Raiders of the Lost Ark* in which Petra is featured, obviously cannot give you the feeling as actually being there (although truth be told a fifth time for me is questionable...not impossible, but questionable). Seeing the Treasury as well as the other sites fashioned from the rock makes you realize that the ancients were most resourceful, to say the very least.

We stayed in two Jordanian resorts. We had stayed at the Intercontinental resort in Aqaba five years ago and the travelers wanted way more than the one night. But this year the Intercontinental, as wonderful as it had been, couldn't hold a candle to the Dead Sea Marriott where we also stayed. Holy Moly! The food and the facility are fantastic!! Maybe the next time we'll arrange two nights there.

By the way, the Jordanians knew of course that we had come from Israel. They welcome the tourists, and with the peace treaty of quite a number of years ago, have no issue even with Israelis visiting their country. The only trouble is that the process of passport control and customs is a pain in the neck. Fortunately coming from Jordan into Israel is far easier. We survived.

Again, it was great. I'm hoping for another interfaith tour in the future...not five years from now. If you're interested just let me know and I'll add you to the growing list (OK, I haven't started the list yet, but when I do, with **your** name it will start growing).



There are so many reasons why I love Shavuot, and the reasons I cite most often are one of community and personal practice: the Torah study, the cheesecake, ice cream, and flowers, and the Confirmation of our teens. All these things speak to my aesthetic and favorite things about living Jewishly. I rarely mention the story of Ruth, however, and I should because I love that, too. The story of Ruth is a story about conversion to Judaism, about *chesed* (kindness), about community, and most importantly to me, about self-determination.

At the beginning of the story, Naomi urges her widowed daughters-in-law, Ruth and Orpah, to return to their people. She does so with genuine kindness, saying in Chapter 1, Verse 13, "Oh no, my daughters! My lot is far more bitter than yours, for the hand of Adonai has struck out against me." She wants a better life for them, and Orpah agrees to return to her people. Ruth, however, not only declines but does so in a way that makes clear the life she desires for herself.

"But Ruth replied, 'Do not urge me to leave you, to turn back and not follow you. For wherever you go, I will go; wherever you lodge, I will lodge; your people shall be my people, and your God my God. When [Naomi] saw how determined she was to go with her, she ceased to argue with her.'" Ruth's determination is as striking to Naomi as it is to us, and I sometimes wonder what exactly she saw. Heaven knows that I have continued to argue with a determined family member before, so why did Naomi acquiesce?

Cynthia Ozick's "Ruth" in "Congregation: Contemporary Writers on the Jewish Bible" presents a midrash in which she imagines Ruth saying to Naomi, "Mother-in-law, I am used to living in your household, and have become accustomed to the ways of your family. I would no longer feel at home if I resumed the ways of my own people."

Ozick continues by exploring the idea that Ruth's decision to remain with Naomi are an act of self-determination, and that we can look to Ruth as an example of affirming our own identity and spiritual journey:

[Ruth's] act is far, far more than a ringing embrace of Naomi, and far, far more than the simple acculturation it resembles. Ruth leaves Moab because she intends to leave childish ideas behind. She is drawn to Israel because Israel is the inheritor of the One Universal Creator.

Of course, Ruth's spiritual journey begins with a dramatic first step. If it didn't, it wouldn't make such a good story. Our own journeys may begin with a smaller step, like making a new commitment to regular worship or study. Then again, it could be similarly impressive, like studying for and taking part in our Adult B'nai Mitzvah service this June! Truthfully, all our spiritual journeys make good stories. I hope you will join us on Saturday morning, June 3, at 11:00 AM to celebrate our Adult B'nai Mitzvah, and I hope you will find time to tell me about your spiritual journey, too.

Erev Shavuot

Join us on May 25 at 8:30 PM for an evening of Study and Art - The Power of Words.

Business Office

The business office will be closed on Friday, May 26 for Shavuot and on Monday, May 29 for Memorial Day.

Orbit Submission

All articles for the June and July issue of The Orbit are due on Wednesday, May 3, 2022 at 9:00 AM. Please email your articles to lwygza@bethemethde.org. Thank you.



PRESIDENT'S MESSAGE



DAVID NEKOUKAR
(HE/HIM)

Thank You for this Opportunity

Writing my last article as your president is a bittersweet feeling. I cannot help but reflect on the incredible journey we have shared over the past two years. It has been a true privilege to serve as your president, and I am grateful for the trust and support you have shown me during this time.

I want to take this opportunity to express my heartfelt gratitude to everyone. As president, I have had the privilege of overseeing a few changes within the CBE community. From the creation of an ethics guide, the kickoff of a bylaws review, growth of our educational programming, the arrival of new members, and even the use of Zoom for our board meetings, change has been a constant companion on this journey. As we navigate changes within our congregation, I hope we recognize that change can sometimes be difficult, but it is necessary for our continued growth and renewal. Let's continue to embrace the opportunities that come with change while remaining true to our core mission, values, and beliefs. One positive change is already on our horizon: Rachel Allen will be voted on as your new president at our Annual Meeting at noon on May 21. I hope many of you will be able to attend our Annual Meeting to join your congregational family in celebrating another wonderful year at CBE and showing your support.

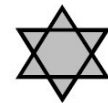
I also hope you'll consider becoming more involved in the stewardship of CBE. This can be via attendance at our activities, joining us at brotherhood and sisterhood events, or potentially helping as a committee member. CBE has been blessed with so many wonderful people over the years who have generously given their time and energy to CBE, serving as committee chairs, board members, and in other capacities. These roles are often time-consuming, but they come with a huge sense of pride and accomplishment. You can help make an impact on the current and future path of CBE and our local community. An easy way to get introduced to our opportunities is to start by attending a board meeting. They are always open to the congregation and are listed on our calendar.

It has been a treat to work so closely with our

staff. Our building and our congregation would not exist without them. We have three full-time administrative staff members who are the glue that hold everything together. Jon Yulish, Lisa Schrier and Lori Wyzga do a lot of heavy lifting (sometimes literally!) and make their increased responsibilities look easy every year. We owe a world of gratitude to our custodial staff, Mike Garnett and Evan vonWeltin, who are always present and do an endless amount of setup, cleanup, and takedown for every event we host. And our congregational family wouldn't feel like family without our wonderful clergy. It has been a great pleasure working alongside Rabbi Robinson and Cantor Pellen and getting to know them better.

The Board of Trustees is a collection of amazing individuals who bring dedication and sincerity in all they do for CBE. I am thankful for the opportunity to work with such well-intentioned and thoughtful people from whom I've learned so much. I routinely came away from our board meetings amazed at the level of care and consideration the board puts into deciding the path forward for our congregation. None of our decisions were ever taken lightly. The combination of our board's energy and commitment alongside our staff's dedication and hard work has been the driving force behind CBE's past successes and will continue to be the backbone of CBE's success.

It has been an honor and a privilege to serve as your president over the past two years, and I am grateful for the opportunity to have been a part of this vibrant and dynamic community. I look forward to continuing to work with you all in the years to come as we face the challenges and opportunities that lie ahead.



Schoenberg Memorial Chapel

*Dedicated to serving our community
with Compassion, Competence and Dignity*

519 Philadelphia Pike

302-762-0334

May 2023

Sunday	Monday	Tuesday	Wednesday	Thursday	Friday	Saturday
	1 (10 Iyar)	2 (11 Iyar) 12:00pm Stocking for Joseph's Pantry 3:00pm Joseph's Pantry Open	3 (12 Iyar) 4:45pm Hebrew School 7:00pm Choir Rehearsal	4 (13 Iyar)	5 (14 Iyar) Youth Choir Performs 7:00pm Kabbalat Shabbat Service 8:00pm Oneg	6 (15 Iyar) Emor 9:30am Torah Study 11:00am Bat Mitzvah of Jenna Mackley 11:00am Shabbat Service 5:30pm 2nd Grade Havdala Service
7 (16 Iyar) 9:00am Religious School	8 (17 Iyar)	9 (18 Iyar) Lag BaOmer 12:00pm Stocking for Joseph's Pantry 3:00pm Joseph's Pantry Open 7:00pm Board Meeting	10 (19 Iyar) 4:45pm Hebrew School 7:00pm Choir Rehearsal	11 (20 Iyar)	12 (21 Iyar) Choir Performs Sisterhood Shabbat 7:00pm Shabbat Service 8:00pm Oneg	13 (22 Iyar) B'har-B'chukotai 9:30am Torah Study 11:00am Bat Mitzvah of Eva Costas 11:00am Shabbat Service
14 (23 Iyar) Mother's Day 9:00am ISRAEL DAY	15 (24 Iyar) 4:00pm Rabbi Grumbacher's Talk on Beth Emeth History	16 (25 Iyar) 12:00pm Stocking for Joseph's Pantry 3:00pm Joseph's Pantry Open	17 (26 Iyar) 4:45pm Hebrew School	18 (27 Iyar)	19 (28 Iyar) Yom Y'rushalayim 7:00pm Shabbat Service 8:00pm Oneg	20 (29 Iyar) B'midbar 9:00am Shabbat Torah Study & Schmooze 11:30am Astrove Baby Naming
21 (1 Sivan) 9:00am Religious School 12:00pm Annual Meeting	22 (2 Sivan) 2:00pm BEMP Annual Meeting	23 (3 Sivan) 12:00pm Stocking for Joseph's Pantry 3:00pm Joseph's Pantry Open	24 (4 Sivan)	25 (5 Sivan) Erev Shavuot 8:30pm Tikkun/Adult Learning	26 (6 Sivan) Shavuot Yizkor Business Office Closed 5:30pm End of Year Shabbat Dinner 7:00pm Confirmation 7:00pm Shabbat Service 8:00pm Oneg	27 (7 Sivan) 9:30am Torah Study 11:00am Bar Mitzvah of Asher Rosenberg 11:00am Shabbat Service
28 (8 Sivan)	29 (9 Sivan) Memorial Day Building Closed	30 (10 Sivan) 12:00pm Stocking for Joseph's Pantry 3:00pm Joseph's Pantry Open	31 (11 Sivan)			

In memory of the departed whom we now remember. We share in the recent bereavement suffered by members of our temple family and extend our sincere condolences to:

Lynn and Alan Brown on the death of Alan's mother, Gloria Brown.

Esther Timmeney on the death of her husband, Paul Timmeney.



Sisterhood Events



Judaica Shop Sale!

The Sisterhood Gift Shop end of the year sale will be held on May 7, 2023 from 9:00 AM to Noon. The first item is 10% off, second item is 20% off and the third

item is 30% off for all merchandise \$10.00 and up!

THE MOVIES AT NOON (Formally "Lunch and Learn with Sue")

Once a month on Wednesdays from 12:00 - 1:30 PM at Beth Emeth. Sue Paul will facilitate our favorite movie discussions!!

Here is our upcoming list of movies to discuss and the dates on which we'll meet!! We hope you can join us for some or all of them!!

Wednesday, May 24 - **The Lemon Tree** (Amazon Prime) Watch Lemon Tree |

Prime Video (Amazon.com)

Wednesday, June 28 - **The Richie Boys** (on Tubi TV)

Watch the movies on your own before we meet and we'll



discuss the films together. Sue Paul will moderate our discussion. Bring a sandwich for yourself to eat and we will provide drinks and dessert!!

We'll meet in the Beth Emeth library. RSVP for these events to Missy Rosenthal by emailing her at mmrosenthal@comcast.net

MAHJONGG MONDAY on May 8 - 11:00 AM-1:00 PM

Come join us to play the fun and exciting game of Mahjongg! Beginners are welcome! We'll try to break up into groups of 4 with beginners grouped together and more experienced players grouped together. Please RSVP to Missy Rosenthal at mmrosenthal@comcast.net so we know how many people to expect, how many sets we will need and if you consider yourself a beginner or experienced player. If you have a set and mahjongg card(s), please bring them!! We'll provide snacks and drinks!!

Next Sisterhood Meeting

Join us on Tuesday, May 2, 2023 at 7:00 PM on Zoom:

<https://us02web.zoom.us/j/82462604035?pwd=RzJRd0JpWWJ1V09sVitnNHIXY1h6QT09>, Meeting ID: 882 1462 3577; Passcode: 616715



Sisterhood Shabbat

The Sisterhood Shabbat will be held on Friday, May 12, at 7:00 PM. We hope you'll join us for a wonderful Shabbat with our Sisterhood family!

Congregation Beth Emeth Sisterhood
Presents
Annual Donor Event



An evening of fun, food & BINGO!

Congregation Beth Emeth
Social Hall
Thursday, April 27, 2023
6:30 pm

Tickets are \$36 for members
\$54 for non-Sisterhood members

The event will include dinner, BINGO & the
opportunity to win a number of fabulous prizes!
Please feel free to bring our own wine to enjoy
while you eat & play! We hope that you'll
support Sisterhood's major fundraiser of the year!

Please use the enclosed RSVP card or
scan the qr code to reserve your spot no later than
April 17, 2023.

Please bring a donation for Joseph's Pantry.



EDIBLE DESSERT CUPS
JAMIE GELLER

INGREDIENTS

- 2 tablespoons all-purpose flour
- 1 pound (450 grams) puff pastry dough, thawed.
- 4 cups chocolate pudding
- ½ cup chopped hazelnuts

PREPARATION

Preheat oven to 400°F.

1. On a lightly floured surface, roll puff pastry into a 12-inch square, about an 1/8-inch thick.
2. Cut into 9 (4-inch) squares. Carefully place each square into a non-stick or well-greased muffin tin. Line the inside of each square with a small piece of foil filled with pie weights or dried beans.
3. Bake 15 minutes or until puffed and beginning to brown. Cool 3 minutes and then remove foil and weights. Return to the oven for 10 to 12 minutes or until pastry is golden brown and cooked all the way through. Cool completely.
- 4.. Fill pastry cups with pudding and garnish with chopped hazelnuts. Make 9 servings

List of Funds to Donate to at CBE

ABLEMAN LITURGICAL ARTS FUND - Provides programs, contemporary worship or special musical events during Jewish Music Celebration.

PAUL AND LILLIAN CRAMER

MEMORIAL FUND - To purchase equipment, and to enrich school educational programs; to fund capital improvements and maintenance to Temple property.

FAMILY ASSISTANCE - For needy families.

HARRY AND ESTHER JACOBS

MEMORIAL FUND - For Adult Education and other special programs.

KEIL-HERRMANN MEMORIAL FUND - To support annual Scholar-in-Residence lecture series.

BERNARD KRESHTOOL MEMORIAL FUND - For Living Judaism programs such as Adult Jewish Education.

MILTON & HATTIE KUTZ SCHOLARSHIP FUND - To help defray expenses of our youth at Jewish camps, conclaves, Gratz High School, as well as school tuition.

EDITH LABOVSKY MEMORIAL FUND FOR STUDENT VISITS TO ISRAEL - Assistance for Youth and Family Education.

DR. LEO AND JULIA B. BLUMBERG SCHOLARSHIP FUND - For the same such purposes as the **KUTZ FUND**.

DIRECTOR OF LIFE LONG LEARNING DISCRETIONARY FUND - for the Religious School

LIBRARY FUND - To purchase books for the library.

MARGARET MAY MEMORIAL JEWISH FAMILY LIFE EDUCATION FUND - For Jewish educational programs.

MAZON - A Jewish Response to Hunger - fundraising to help solve the problem of hunger.

RAYMOND AND ESTHER MCDONALD MEMORIAL FUND - For activities relating to the State of Israel.

RABBI GRUMBACHER MUSIC FUND - To promote Jewish music with guest musicians and purchase music.

PRAYER BOOK FUND - funding for prayer book and bookplates call the office for pricing.

RABBIS'/CANTOR'DISCRETIONARY

FUNDS - To support Jewish causes, pursue acts of loving kindness, etc. **Rabbi and Cantor has a separate fund.**

ROSENTHAL JEWISH BOOK MONTH LECTURE FUND - To promote Jewish Literature and a biannual lecture.

SOCIAL ACTION FUND - To be used at the discretion of the Social Action Committee for local groups in need i.e. Sojourner's Place.

TEMPLE FUND - Undesignated contributions - for general congregation purposes.

VANCE BOLEN MEMORIAL FUND - To support Cadet Aides.

PEARL K. BREGMAN MEMORIAL FUND - fund available for use by the Caring Community Connection Committee.

ALICE SCHIFF MEMORIAL FUND - needs recommended by the Endowment Fund Committee and the Board of Trustees.

ADULT AND YOUTH CHOIR FUND - to promote and support the Adult and Youth Choir needs.

LEONA ELKINS SCHOLARSHIP FUND - awarding need based scholarship to students of CBE studying Hebrew or advanced Hebrew Studies at CBE, Gratz Hebrew High School or education programs in Israel.

RABBI HERBERT E. DROOZ & FLORENCE Z. DROOZ FUND - awards for scholastic excellence.

JUDGE STIFTEL AND YAFFEE FUND - needs recommended by the Endowment Fund Committee and the Board of Trustees.

THE HARRY & BLANCHE WOLPERT FUND - Family assistance fund .

STAT FAMILY GIFT FUND- Religious School camp and Israel trip scholarships

HAROLD & BEATRICE SNYDER CAMP HARLAM FUND- For Camp Harlam Scholarships.

MILTON & GAIL WAHL FUND - subsidize the publishing of The Orbit.

THE MEMBERSHIP ASSISTANCE FUND - to assist families or individual to pay the minimum dues.

CARING COMMUNITY COMMITTEE – To support the Beth Emeth community with care baskets, driving needs, food, cards, etc...

THE CONGREGATION BETH EMETH EDUCATION FUND – or supplies and programs for educational needs.

THE IRENE PACKLES MEMORIAL FUND FOR HIGH SCHOOL SENIORS- Contributions made to this fund will enable our high school students to make the transition to college more easily, with regard to their Jewish identity.

THE LARRY ISAKOFF MUSIC PERFORMANCE FUND- income from this fund will be used to pay for musical events such as cantorial and choir concerts, musical plays, etc.

YOUTH AND FAMILY PROGRAMMING – for youth and family programs.

THE HOLOCAUST GARDEN MAINTENANCE FUND – Maintenance of the Holocaust Garden

THE TORAH REPAIR FUND – To repair the Torah.

THE SCHOLARSHIP FUND - to provide funds for Religious School and Camp scholarships.

HOSPITALITY FUND – to help with noshes, onegs and other events

JOSEPH'S PANTRY (Beth Emeth Food Pantry) – to provide funds for the purchase of food in order to supplement in-kind donations

JOSEPH ZIMMERMAN MEMORIAL MUSIC FUND – to fund the hiring of a professional cellist during Kol Nidre.

Notice

All contributions sent to the temple should be made out to **"Congregation Beth Emeth."** If a special fund is desired, its name should be noted on the memo line or in an accompanying letter. Thank you for your cooperation.

A Note about Contributions

We welcome all contributions. If you wish the contribution to be listed in *The Orbit*, there is a minimum donation of \$10. This also covers the mailing of ONE acknowledgement card. Please be sure to include the address if the person(s) are not members of Congregation Beth Emeth. The card is mailed when the check is received.

It is important that, when you send in a donation, you write specifically how you want the donation listed. Please include a note with your check, printed clearly or typed, stating exactly how you want the contribution to read. For example: Mary and John Doe in memory of..., Mr. and Mrs. John Doe in honor of..., Mr. John and Mrs. Mary Doe in beloved memory of....

Please remember to write legibly and to list which funds you would like your donation to go to. Please make your check payable to Congregation Beth Emeth. Also, *The Orbit* usually runs three weeks ahead of schedule so it may take three weeks for your donation to appear in *The Orbit* from the date you mail it. Thank you for your cooperation.



Are you receiving j-VOICE Monthly?

THANKS TO A PARTNERSHIP BETWEEN JEWISH FEDERATION OF DELAWARE AND CONGREGATION BETH EMETH, congregants can enjoy a complimentary subscription to *j-VOICE Monthly*, an award-winning publication whose mission is to provide the Delaware and the Brandywine Valley community with a high-quality resource that educates, informs and inspires our community through a Jewish lens.

We Grow Stronger TOGETHER

Subscribe to j-VOICE Monthly at:

- ShalomDelaware.org/publications/jewish-voice-subscription
- call 302/427-2100 or
- email Danaw@ShalomDel.org

To receive our j-VOICE Weekly email, go to:

- ShalomDelaware.org/publications/j-voice-signup
- call 302/427-2100 or
- email Danaw@ShalomDel.org



Your Old Shoes Can Help Stamp Out Cancer Recycle Your Shoes



Did you know that your old, no longer used shoes can help to stamp out cancer? In cooperation with Community Recycling and Stand Up 2 Cancer (SU2C) **Congregating Beth Emeth** is taking part in a unique fundraising drive that we hope you will consider supporting. ***It will cost you no money!*** Participating is simple. **Congregating Beth Emeth** is collecting used shoes for reuse. This international shoe recycling program collects used shoes for distribution to poor regions all over the world (including areas in the USA). For each container filled with shoes a donation will be made to Stand Up 2 Cancer.

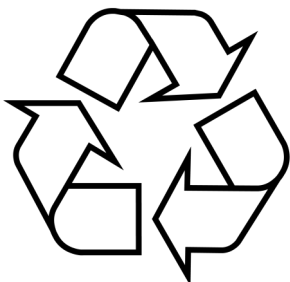
Our community will benefit as well. Not only will your recycled shoes help raise funds for SU2C, it will also keep more shoes out of our local landfills---and free up some space in your closet.

- **Drop off your used shoes in the shoe recycling container in the lobby of Congregating Beth Emeth** As each container is filled they are shipped to the Community Recycling organization for distribution to those in need. SU2C receives a small donation for each container that we fill.
- You get to free up some closet space while helping to reduce landfill waste
- Ask your family, friends, neighbors and co-workers to participate

Thank you very much for helping to stamp out cancer.

DROP OFF YOUR SHOES to the shoe recycling box in the lobby at Congregating Beth Emeth

for information about SU2C please visit www.SU2C.org



Joseph's Pantry

Joseph's Pantry is an emergency food pantry hosted by Congregation Beth Emeth. Its goal is to provide a three-day supply of food and toiletries on an emergency basis, for residents of Wilmington, and specifically, for those in need, in the Ninth Ward. The hours of operation are: Tuesday afternoons, from 3:00 PM until 6:00 PM. The pantry is always in need of donations and volunteers. Some of the items that are currently on the pantry's Wish List are: toilet paper, paper towels, napkins, canned vegetables, pasta, pasta sauce, macaroni and cheese, canned fruit, laundry detergent, and menstrual products. Donations can be dropped off at Beth Emeth or can be ordered online and shipped directly to the synagogue.

Thank you for your support.



Bar/Bat Mitzvah Parties

When planning your son's or daughter's Bar/Bat Mitzvah parties, please consider using our lovely facilities. Our social hall will accommodate a large group of family and friends. Caterers are welcome; rental is reasonable; there is room to dance, plenty of parking and a great staff to help make your party a success.



Aluminum Can Tabs

Please continue saving soda, soup and other tabs. You may drop them off in the container located at the front door of the temple. The tabs will be sent to the local Ronald McDonald House. The tabs are sold and the money helps underwrite the wonderful support that the houses provide for sick children and their families.

Payments Made with Stock

Beth Emeth is now working with LPL Financial to trade securities. Effective immediately, the contact information, DTC and account numbers have changed, although the process is largely unchanged.

Congregants who wish to make a donation or pay their commitment with stock, please follow these instructions:

1. Direct your broker to transfer stock to Beth Emeth's broker, **LPL Financial at 800-724-2120**. They should tell LPL that the stock is to be credited to the account titled **Congregation Beth Emeth (DTC# 0075; Account number: 6772-1990)**.

2. Once the stock is transferred, please notify Jon, Lisa, or Lori in the business office, that you have transferred stock, so that your account may be credited. They will need the following information:

- Your name,
 - Number of shares that you sold,
 - Name of the stock,
- What the stock is paying for (i.e., commitment).

Please call the business office at 302-764-2393 if you have any questions.

The Caring Committee



The Caring Committee provides opportunities to help members of our CBE community in a variety of ways. They include making soup and meals, writing cards and making calls, consoling the bereaved, distributing holiday gifts and visiting members of our community in facilities and their homes, although these visits have been suspended during the pandemic. New committee members are always welcome. Contact Judith Insinga by email her jj schnitman@yahoo.com or 302-764-4093 for more information about the Caring Committee.



The Congregation Family gratefully
acknowledges the following contributions:

"Nobody is ever impoverished through the giving of charity." ~ Maimonides

RABBI ROBINSON DISCRETIONARY FUND

In memory of beloved father,
Jack Goldberg from **Don &
Barbara Goldberg**
In appreciation of Rabbi
Robinson from **Ira Merritt**
In memory of my father, John
Richard Zimmerman
from **Jan Zimmerman**
In memory of Eileen Snyder
from **Stuart Snyder**
In memory of Ronald J.
Cutler from **The Cutler
Family**

CANTOR PELLEN'S DISCRETIONARY FUND

In loving memory of Irving
Herschbein from **Barbara
Aronstam**
In appreciation of Cantor
Pellen from **Ira Merritt**
In memory of Vicki Russell
from **Cheryl Hampson**

BERNARD KRESHTOOL MEMORIAL FUND

In loving memory of my
father, Dr. Bernard Kreshtool
from **Dr. Daniel Kreshtool**

JOSEPH'S PANTRY

In loving memory of H. David
Kursh, the best husband,
father and pap, always in our
hearts, **Debby Kursh &
Marissa, Josh, Gray &**

Brooks Cohen

In memory of Frances Klein
from **Barbara Miller**
In loving memory of my sister,
Heidi S. Rogol from **Beth
Schnitman-Malm & Robert
Malm**
Bruce & Linda Sachais
In loving memory of Robert
Schnitman from **Judith &
Richard Schnitman**
In memory of beloved hus-
band, Arthur W. Joseph
from **Judith B. Joseph**
Judith Dorfman
In loving memory of Irving &
Louise Kursh. Dearest pop-
pop and mom-mom. **Love,
Debby Kursh and Marissa,
Josh, Gray & Brooks Cohen**
In memory of Rosalie
Kupferschmid from **Rachel &
Mitch Warren**
Richard & Judith Goldbaum
In memory of Jack Melamed
from **Rosalyn Selber
Lieberman**

CARING COMMUNITY COMMITTEE

In memory of Louis Weiner
from **Madeline Rubinow**
In memory of Earl J. Goldberg
from **Phyllis R. Lann**
In memory of Barbara
Friedman from **Rose & Alan
Ebner**
In memory of Gloria Brown
from **Sherry Simmons**

In memory of Louis Goodhart

from **Steven & Susan
Goodhart**

DIRECTOR OF LIFELONG LEARNING DISCRETIONARY FUND

In memory of Irene Detwiler
from **Mark & Susan
Detwiler**

FAMILY ASSISTANCE

In memory of Lee Wilner
and Louis Wilner from **Suzy
& Peter Grumbacher**

KEIL-HERRMANN MEMORIAL FUND

In memory of Zelda K.
Herrmann from **Susan &
Stephen Herrmann**

LIBRARY FUND

In loving memory of Molly
Stein from **Mark & Shelley
Stein**

PAUL & LILLIAN CRAMER MEMORIAL FUND

In memory of Anne Noskow
from **Henrienne Schneider**

PRAYER BOOK FUND

In loving memory of Sylvia
Hoffman & Minnie Shear,
may you rest in peace
from **Maxine Shear**

RABBI GRUMBACHER DISCRETIONARY FUND

In memory of Stuart
Gluckman from **Charlotte
Gluckman**
In memory of Robert
Wasserman from **Mr. &
Mrs. Bill Wasserman**

RABBI GRUMBACHER MUSIC FUND

In memory of Mara Tartack
from **Elliott & Audrey Katz**
In loving memory of Marcia
Sloan, devoted wife, moth-
er, grandmother & friend
from **Harriet B. Ansul**
In memory of Mara Tartack
from **Joanne & Barry
Kittinger**
In memory of Mara Tartack
from **Rachel & Jim
Roberts**
In memory of Mara Tartack
from **Sandy McBride**
In memory of Mara Tartack
from **Susan L. Ellis**
In memory of Mara Tartack
from **Susan and Steven
Goodhart**
In honor of Sue & Dennis
Cherrin's 50th wedding
anniversary from **Suzy &
Peter Grumbacher**

SOCIAL ACTION FUND

In loving memory of Howard
Sands, much loved
husband, father and grand-
father from **Michele Sands
& Family**

STAT FAMILY GIFT FUND

In memory of Geraldine
Bowman from **Jim &
Phyllis Feingold**

TEMPLE FUND

In memory of David
Freschman from **Anne
Jacobs**
In memory of beloved father
& grandfather, Oscar
Tanenbaum from **Bernice
Trachtman & Family**
In memory of Steven R.
Stone and Leslie Stone
from **Bruce & Debbie Levin**
In loving memory of Arthur
W. Joseph from **Dayle &
Michael Joseph**
In memory of Henrietta
(Yetta) Serota from **Doris
Heisler, Henrietta Heisler &
Susan Hanks**
In memory of our brother,
Ellis and Elizabeth Rosen-
baum from **Ethel & Don
Parsons**
In memory of Jason Green
from **Evan & Nancy Crain**
In memory of Mara Tartack
from **Heather & Steven
Margolin**
In memory of Herman
Goodman from **Jan & Rob
Goodman**
In memory of Mara Tartack
from **Murray & Diane Horn**
In memory of Susan Good-
man from **Rob & Jan Good-
man**
In memory of David Jay
Freschman from **Robin
Freschman & Family**

In memory of Evelyn L.
Woloshin from **Ruth
Balick**
In memory of Blanche
Barrow from **Ruth
Rosenberg**
In memory of my sister,
Rachel Premet and my
father, Abraham Belfus
and brother, Ralph Belfus
from **Sarah Godowsky**
In memory of Mara Tartack
from **Sue Paul**
In memory of Frances
Friedman from **Winnie
Silver**

THE CONGREGATION BETH EMETH EDUCATION FUND

In memory of beloved
father and Zeydie, David
Miller and beloved uncle
Jeff Goldstein from **Faith,
Allan, Josh & Kara
Zaback**

Visit us at www.bethemethde.org or call at 302.764.2393

Yair D. Robinson, Rabbi • Peter H. Grumbacher, Rabbi Emeritus
Elizabeth F. Pellen, Cantor • David Nekoukar, President
Jonathan I. Yulish, Executive Director
Eliana M. Hall, Director of Life Long Learning

Address or phone number change, call or email: lwyzga@bethemethde.org

Funded by The Milton and Gail Wahl Fund



**300 W. Lea Blvd.
Wilmington, DE 19802**

Friday, May 26, 2023 at 7 pm

CONFIRMATION CLASS GRADUATION

