



Light of God's House

CONGREGATION BETH EMETH *Orbit*

300 West Lea Blvd, Wilmington, DE 19802 • 302-764-2393 • bethemethde.org

VOLUME XLVII • NO. 5 20 TEVET - 21 SHEVAT 5784 • JANUARY 2024



A GOOD QUESTION

YAIR D. ROBINSON
(HE/HIM)

I'm writing this article two days before Chanukah, on the fifth of December by the conventional calendar, the 23 of Kislev by the Jewish calendar, and the 61st day of October 7th by the way many of us have been living our lives since we first learned of the attacks in Israel on Simchat Torah. At the time of this writing, I don't know if, by the time you read this, the war will still be going on, I don't know what the casualty numbers will be, either of Israelis or Gazans, or how many hostages will be returned, if any. To quote my teacher Shai Held, I am not optimistic, but I am hopeful. My pessimism is hard-won, with an Israeli government that has been, at best, negligent (and elements that are, at worst, hateful, a *shande* to the founders of the State), a terrorist organization bent on murdering Jews styling itself as freedom fighters, and seemingly more and more of those we thought were our friends choosing the 'socialism of fools', as French-Jewish philosopher Bernard Henri-Levi calls antisemitism. But my hope is hard-won as well: I know the peacemakers in Israel and the West Bank, Jewish and Palestinian, who still want to find a way to co-exist and chart a new path for the day after the war, whenever that will be. Even amid protests that seethe with anti-Jewish fervor, I hear from non-Jewish colleagues who reach out with support for me, for

SHABBAT SHALOM

Friday, January 5, Kabbalat Shabbat Service, 7:00 PM; Or join us at www.bethemethde.org.

Rabbi Robinson will speak

We welcome St. Andrew's School

Birthday Blessings for the month of January

Saturday, January 6, Torah Study and Service Combination, 9:30 AM

"Shemot," Exodus 1:1-6:1;

Isaiah 27:6-28:13; 29:22-23

Friday, January 12, Congregational Dinner, 5:30 PM, Shabbat Service, 7:00 PM

Or join us at www.bethemethde.org.

Bernard Kreshtool Memorial and Keil-Herrmann

Scholar-in-Residence Weekend

Rabbi Marla Feldman, Executive Director Emerita of Women of Reform Judaism, will speak

Saturday, January 13, Scholar-in-Residence with Rabbi Marla Feldman, Bagel Breakfast and Study, 9:30 AM; Sunday, January 14, Scholar-in-Residence, Breakfast and book signing, 9:30 AM

"Vaera," Exodus 6:2-9:35; Ezekiel 28:25-29:21

Friday, January 19, Shabbat Service, 7:00 PM

Or join us at www.bethemethde.org.

Rabbi Robinson will speak

Saturday, January 20, Torah Study and Service Combination 9:30 AM; B'nai Mitzvah Family

Workshop, 9:30 AM

"Bo," Exodus 10:1-13:16; Jeremiah 46:13-28

Friday, January 26, Shabbat Service, 7:00 PM

Or join us at www.bethemethde.org.

Shabbat Shirah with the choir

Saturday, January 27, Shabbat Study and

Schmooze, 9:00 AM

"Beshalach," Exodus 13:17-17:16; Judges 4:4-5:31

us, who understand that there is no limit to love, and who want us to live peaceably and securely.

Frequently, when I've met with them, I get questions about how I or our community understands the conflict (as if there is a way to understand the torment and death of children). I understand what they mean, which is understanding the conflict that so defines the borders of Israel's history and existence. And I wonder sometimes how many of us truly know the history; who can put the maps of Israel in order, or know the difference between an Allenby and a Balfour, a Trumpedor and a Jabotinsky, a Mapamnik or Mapainik (I was speaking with a non-Jewish colleague who asked about me doing a program on coexistence and the history of Israel and when I started rattling off those words, and dates, and authors like Tom Segev and Howard Sachar, and watched as his eyes glazed over completely and his smile froze). It's understandable; for too long, I think, we in America have taken for granted the history of Israel and focused more on our *feelings* about it instead of the actual events. And I get it; sometimes those red lines and green lines get in the way of us having any sense of the place and her people. But that history is important, and hearing Israeli voices is important in this moment.

For that reason, I'd like to recommend a book, one I've suggested before, Yossi Klein HaLevi's ***Letter to My Palestinian Neighbor***. It's a book, and an author, that defies conventional wisdom. An American *oleh* who originally believed in the settlement movement, he has become an ardent believer in peace and coexistence, and through this book, tries to explain his life and existence to the Arabs he lives near geographically and existentially. To explain what it means to be Jewish and Israeli, to live in the Land—but without denying the Palestinian narrative, or the pain of occupation. The book—and its companion website, including the full text of the book in Arabic for free—is meant to push and challenge the reader from simply embracing easy narratives and attempt to recognize the humanity in the Other. Indeed, part of the power of the book is that it also challenges us to want to know more about Israel and the Palestinians' histories, to recognize our own blind spots when it comes to the conflict, and to deepen our connection and understanding even with those we struggle to understand.

It may feel like a far-fetched idea, especially after all the blood that has been spilled since October 7. But I would encourage us to read the book, and to find a way to talk about it. *Please join me on Sunday, January 21' at 9:30 AM at the synagogue to discuss the book, and may the reading bolster our hope for our Land and our future.*

Joseph's Pantry

Joseph's Pantry is an emergency food pantry hosted by Congregation Beth Emeth. Its goal is to provide a three-day supply of food and toiletries on an emergency basis, for residents of Wilmington, and specifically, for those in need, in the Ninth Ward. The hours of operation are: Tuesday afternoons, from 3:00 PM until 6:00 PM. The pantry is always in need of donations and volunteers. Some of the items that are currently on the pantry's Wish List are: toilet paper, paper towels, napkins, canned vegetables, pasta, pasta sauce, macaroni and cheese, canned fruit, laundry detergent, and menstrual products. Donations can be dropped off at Beth Emeth or can be ordered online and shipped directly to the synagogue.

Thank you for your support.



Need a ride? Or help around the house?

Brandywine Village Network is here for you!



Helping you live just where you want . . . at home.

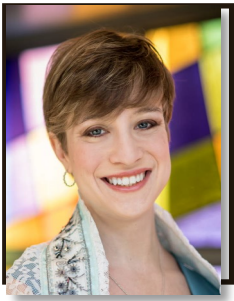
**Care Management
Volunteer Support
Social & Wellness Activities**

*An aging in place initiative of
Jewish Family Services of Delaware*

www.brandywinevillagenetwork.org

302.478.9411





CANTOR'S CORNER

ELIZABETH F. PELLEN
(SHE/HER)

It is truly hard to believe that the new year is upon us. I am always intrigued by this time of year which is so bleak and dreary as we literally drag ourselves through dark shortened days and through nasty cold and wet weather and at the same time, it is reinvigorated, energized by the dawning of a new year and the hope of brighter dreams and inspiring goals. It always proves to be an interesting atmosphere to navigate.

I am especially energized this January by the fact that I once again have the remarkable opportunity to see the future of our nation, the voices of our children, take their first important steps in standing up for their ideals and creating the world they wish to live and lead in. At the end of January, I have the pleasure of once again chaperoning our confirmation students in Washington D.C. as they attend the Religious Action Center of Reform Judaism (the RAC)'s *L'taken* Social Justice Seminar.

Many of you are already aware that our congregation has a substantial history of bringing our confirmation students to this incredible program where they learn to combine their Jewish values of *tikkun olam* with their social justice ideals and begin the important journey of finding their voices and realizing that they have the power to make real change. These students, on the very cusp of adulthood, have the opportunity to engage with hundreds of other Jewish teens - learning and exploring many real-world issues that are crucial to their lives, from climate justice, to firearm legislation, to antisemitism, to women's' reproductive rights.

Though I have now attended the program four times, I never tire of the important work that goes on there. I am always amazed by the amount of growth I see in our students over just three days. I am blown away with every trip to the Hill as I watch the 15, 16, 17,

year-olds speak to their representatives about issues that matter to them deeply. If you have never heard of this program before, I urge you to look into it and if you have a future teen in your house, start talking about it now. Get them excited for the important work they will get to do in just a few years.

As we head into the dark days of deep winter, especially in this tumultuous world we are currently in, I am lifted and warmed by the light of a very promising generation of leaders that will head to Washington in just a few weeks. I hope you will congratulate them on a job well done when they all return. I know they will deserve it.



Orbit Submission

All article for the February issue of The Orbit are due on Wednesday, January 3, 2024 at 9:00 AM. Please email them to Lori at lwynga@bethemethde.org. Thank you.

Quote of the Month

"Whoever does not try, does not learn"
Jewish Proverb



**BETH EMETH
MEMORIAL PARK**

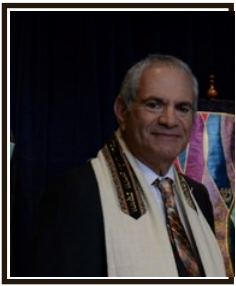
FAULKLAND RD.

OFF DUPONT RD.

FOR INFORMATION

CALL

302-764-2393



FOCUS EMERITUS

RABBI PETER H. GRUMBACHER

“That Was Then...This is Now”

In my role as interim rabbi at Temple Beth El, I was asked to participate in the Newark Interfaith Thanksgiving Service, the Jewish perspective on the themes that I mention below. I used to look forward to the annual services sponsored by the NCCJ, and we went all-out when Beth Emeth was the host. But that was then, and this is now. In the face of anti-Semitism spreading like butter, I felt I couldn't let it go; I couldn't make believe that this Thanksgiving would be like all the others.

I began with verses from the song “The House I Live In” (also called “What is America to Me” sung by Frank Sinatra). Among other things, America is *“a certain word, democracy.”* The song goes on, *“The house I live in... the faces that I see, All races and religions, that's America to me.”* I reminded those gathered that a line was added by Paul Robeson, the phenomenal African American opera singer of the mid-20th century, a line that was taken out... *“The house I live in, my neighbors white and black.”* And as I thought out loud, *“Well, that wasn't somebody's America.”*

But I informed those present that while Christians celebrate Christmas, Jews commemorate Chanukah, all celebrate Thanksgiving...after all, *“it's All-American for all Americans.”* And I continued...

Just from the actions of the White Supremacists, we know there is a narrowing, in fact a “narrow” description of who is an American. And from the protesters who cornered and threatened Jewish students who locked themselves in a Cornell University cafeteria...we know the definition of who is an American is narrowing to be as wide as a hole in a needle.”

There was a double theme of the service; one was “dignity and worth,” the other from the prophet Micah, *“And each person shall sit under their own vine and their own fig tree and no one shall make them afraid”* (Micah

4:4). I asked,

“You talk about dignity? You speak about a theme of an interfaith service in which all Americans are to express our gratitude yet somehow tie that in with those not afforded dignity and worth by society and dismiss what is happening to my People just as evil was, and still is, happening to other Americans?”

Because of the insurrection and its potential, I told them that protesting is something we cherish *“...or shall we say ‘cherish-ed,’*” that component stated in the song itself, *“a certain word, democracy.”*

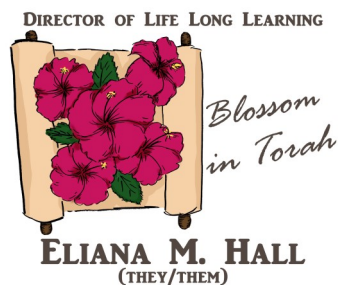
Were they protesting Gaza? *“Nobody in that Cornell gang asked if there was an Israeli in that cafeteria. No, they weren't after Israelis unless those Israelis were Jews, because they and thousands upon thousands are using Gaza as an excuse to once again...lift up the ancient yet contemporary specter of Jew-hatred, anti-Semitism.”*

As I stated, I looked forward to Thanksgiving services of the past, *“but MY PEOPLE – and that's a term that has new meaning to me... MY PEOPLE tell me that they have never felt so alone.”*

I concluded by telling them that I surely didn't want to bring controversy and provocation into my message as I never did in past interfaith services... *“but that was then, this is now.”*

Oh, one more thing related to the theme... *“and no one will make them afraid.”* From Micah's prophecy to all humanity! (The full text of my sermon appeared in Jewish Living Delaware, the organ of the Jewish Federation of Delaware.)





The past few months have been full of life at Congregation Beth Emeth. We have held bonfires, welcomed guest speakers, joined in rallies and marches, planted a pollinator garden, and held our first regional teen event, just to list a few highlights. I hope you're warmed up and ready for more, because January brings us our Scholar-in-Residence, Rabbi Marla J. Feldman. Rabbi Feldman is the Executive Director Emerita of Women of Reform Judaism. A Reform rabbi and lawyer, she was previously Director of Development of the Union for Reform Judaism (URJ) and Director of the Commission on Social Action of Reform Judaism. She is the author of the book "Biblical Women Speak: Hearing Their Voices through New and Ancient Midrash," among other wonderful works, and we are so excited to welcome her!

Rabbi Feldman will be joining us January 12-14, 2024, and we will have several opportunities for adults to learn with her during that time. Her visit with us coincides with MLK weekend, a time to reflect on ways that we can make meaningful change in the world, and with the yahrzeit of our own Connie Kreshtool z"l, whose contributions to Tikkun Olam as a Jewish woman inspire us all. In fact, Rabbi Feldman will take inspiration from both individuals in her teaching for the weekend; so see the full schedule below and go to our calendar at www.bethemethde.org to register for events.

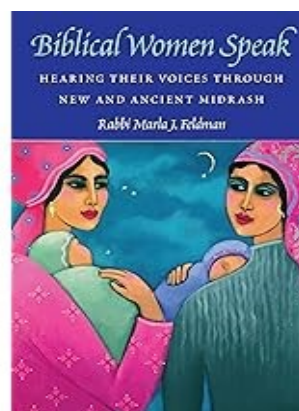
The Scholar-in-Residence program is made possible through generous grants by the Bernard Kreshtool Memorial and Keil-Herrmann Funds.

Friday Night, January 12, 5:30 PM Dinner and 7:00 PM short Shabbat Service, followed by our program at 7:30 PM: Rabbi Feldman will speak on the impact that the WRJ (Women of Reform Judaism) has had on social justice in America, in honor of Connie Kreshtool as we approach her Yahrzeit.

Saturday Morning, January 13, 9:30 AM Bagel Breakfast with Shabbat Study: "Egyptian Midwives and Pharaoh's Daughters": A look at Feminist Midrash using texts from Rabbi Feldman's recent book: Shifra and Puah "Biblical Women Speak: Hearing Their Voices through New and Ancient Midrash."

Saturday Night: 7:00 PM – Leadership Havdalah: Havdalah, refreshments, and a study session for past presidents, board members, senior staff, and spouses.

Sunday Morning: 9:30 AM – Breakfast and Study: Reading from Rabbi Feldman's book and discussion on women in leadership, followed by a book signing. Sponsored by Sisterhood and Brotherhood.



Change of Address Reminder



Don't forget to contact the temple office at 302-764-2393 to change your address or you may now change your

address online. Simply go to our website at www.bethemethde.org and log in as a member. You can manage your account details online. If you have not yet logged in and need a password, contact the office and we will send you a link.

You can also update your telephone number or email address, the same way. Most of the temple correspondence is mailed third class. The post office does not forward any third class mail.



PRESIDENT'S MESSAGE



RACHEL ALLEN
(SHE/HER)

The second weekend of January 2024, we have several wonderful opportunities to come together and study with an inspirational teacher, Rabbi Marla J. Feldman. Rabbi Feldman will be our scholar-in-residence starting on Friday, January 12 and will continue to study with us over the weekend through Sunday, January 14.

I encourage you to look at the events that are planned and sign up for at least one activity. The weekend should be filled with lively conversation and thought-provoking discussions.

Starting on Friday, January 12 at 5:30 PM, we will have a Congregation Dinner with a Shabbat Service and Program at 7:00 PM. On Saturday, January 13 at 9:30 AM, we will have a Bagel Breakfast and text study: Egyptian Midwives and Pharaoh's Daughter. On Sunday, January 14 at 9:30 AM, Rabbi Feldman will lead us in a discussion on Jewish women in leadership.

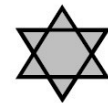
Rabbi Feldman is a Reform rabbi, lawyer, and published author. Her wonderful new book is titled, *Biblical Women Speak: Hearing Their Voices through New and Ancient Midrash*. In this book, Rabbi Feldman uses the biblical text and midrash, both new and ancient, to tell the stories of ten women from the Torah. She weaves the texts together to tell the stories and lessons from women who previously may have only been seen as footnotes to our history. The stories of these women are interesting and engaging.

The goal of retelling these stories makes me think of the Broadway musical *Six*, in which the six wives of King Henry VIII are given the chance to tell their stories, not their story as they relate to a man, but their story as a standalone event, a standalone life. They are no longer sidekicks to a man, but they are their own heroines, the own lead characters in their stories. Catherine Parr even asks the audience, why is her story just as the one that survived, when there is so much more to her life. She tells us to ask the questions that no one was asking.

For so long in our history, women have been put on the sidelines. As Rabbi Feldman notes in her book, some women are not even given names in the Torah, instead referred to by a role or a way they interacted with a man who is named. Rabbi Feldman uses a modern midrash to fill in the gaps from the text. As she notes in her book, "[m]any of the questions that have intrigued [her] the most are not considered by rabbis of ages past." Rabbi Feldman also considers some of the non-Israelite women and the roles they play, including Judah's unnamed wife, Potiphar's unnamed wife, Pharaoh's unnamed daughter, and the Egyptian midwives, Shiphrah and Puah. It is refreshing to be able to hear and learn of these stories and the way these women may have lived.

Learning of these lives that have been sidelined for so long can also be heartbreaking and challenging. As we examine their lives, it will require us to reexamine what we thought we knew or understood about some of the more well-known individuals in the Torah. These discussions, while difficult, are important. We find ourselves asking different questions that have been previously asked. In asking those questions, we may find new lessons that can be learned from the stories.

I am looking forward to the engaging discussions that we will have with Rabbi Feldman. I am also looking forward to learning new stories or details about the lives of these important women. I hope that you are able to join me over the weekend.



Schoenberg Memorial Chapel

*Dedicated to serving our community
with Compassion, Competence and Dignity*

519 Philadelphia Pike

302-762-0334

January 2024

Sunday	Monday	Tuesday	Wednesday	Thursday	Friday	Saturday
	1 (20 Tevet) New Year's Day Building Closed CEP Out of Office EMH - Day Off Rabbi Robinson Out of Office	2 (21 Tevet) 12:00pm Stocking for Joseph's Pantry 3:00pm Joseph's Pantry Open	3 (22 Tevet) 7:00pm Choir Rehearsal	4 (23 Tevet)	5 (24 Tevet) St. Andrew's School Class Visit 7:00pm Kabbalat Shabbat Service 8:00pm Oneg	6 (25 Tevet) Sh'mot 9:30am Torah Study & Service Combination
7 (26 Tevet) 9:00am Religious School 12:30pm Sisterhood Welcomes 2024	8 (27 Tevet)	9 (28 Tevet) 12:00pm Stocking for Joseph's Pantry 3:00pm Joseph's Pantry Open 7:00pm Board Meeting	10 (29 Tevet) 4:45pm Hebrew School 7:00pm Choir Rehearsal	11 (1 Sh'vat)	12 (2 Sh'vat) Scholar-in-Residence 5:30pm Congregational Dinner 7:00pm Shabbat Service 7:30pm Rabbi Feldman Discussion 8:00pm Oneg	13 (3 Sh'vat) Va-eira Scholar-in-Residence 9:30am Bagel Breakfast & Study
14 (4 Sh'vat) Scholar-in-Residence 9:00am Mitzvah Day 9:30am Scholar-in-Residence Breakfast & Book Signing	15 (5 Sh'vat) MLK Day Building Closed 7:00pm Ninth Ward MLK Service	16 (6 Sh'vat) 12:00pm Stocking for Joseph's Pantry 3:00pm Joseph's Pantry Open	17 (7 Sh'vat) 4:45pm Hebrew School 7:00pm Choir Rehearsal	18 (8 Sh'vat)	19 (9 Sh'vat) Adult & Youth Choirs Perform 7:00pm Shabbat Service 8:00pm Oneg	20 (10 Sh'vat) Bo 9:30am Torah Study & Service Combination 9:30am B'nai Mitzvah Family Workshop
21 (11 Sh'vat) 9:00am Religious School 11:00am Caring Committee Meeting 11:30am 2026 Bar/Bat Mitzvah Date Assignment 12:00pm Knitting Club 12:00pm Chess Club	22 (12 Sh'vat)	23 (13 Sh'vat) 12:00pm Stocking for Joseph's Pantry 3:00pm Joseph's Pantry Open	24 (14 Sh'vat) 4:45pm Hebrew School	25 (15 Sh'vat) Tu BiSh'vat 7:00pm Introduction to Judaism: Jewish Music	26 (16 Sh'vat) L'Taken Shabbat Shirah 7:00pm Shabbat Service 8:00pm Oneg	27 (17 Sh'vat) B'shalach L'Taken 9:00am Shabbat Study and Schmooze
28 (18 Sh'vat) L'Taken 9:00am Religious School	29 (19 Sh'vat) L'Taken	30 (20 Sh'vat) 12:00pm Stocking for Joseph's Pantry 3:00pm Joseph's Pantry Open	31 (21 Sh'vat) 4:45pm Hebrew School 7:00pm Choir Rehearsal			

In memory of the departed whom we now remember. We share in the recent bereavement suffered by members of our temple family and extend our sincere condolences to:

Aaron Nathans and Debra Neff Nathans of the death of Aaron's grandmother, Judith Glasgall Weiner

Jay Rosenthal on the death of his wife, Maxine Rosenthal

Leena and Mira Jade on the death of Leena's father, John R. Derrickson, Jr.

Lawrence and Kim Drexler on the death of Lawrence's father, David Alan Drexler.

Aaron Goldstein and Tanisha Merced on the death of Aaron's grandmother, Shirley Bernstein

Heli Fink on the death of her husband, Anne Jacobs on the death of her brother, Robin Freschman and Dr. Laurie Jacobs on the death of their uncle, Dr. Fred Fink.

Elena and Aaron Kupchik on the death of Elena's mother, Mary Fay Bourgoin.



Caring Committee



The **Caring Committee's SouperHeroes** made a hearty vegetable soup (vegetarian) for congregants in need. Containers are stored in the freezer at CBE. Congregants may pick it up themselves or contact

Beth Anne Gluck at bagluck@comcast.net or 302.521.8987, if delivery is needed.

We are planning to make a new batch of chicken soup on January 28, 2024 from 9:30-11:30AM in the kitchen at CBE. If you are interested in participating, please email Shifrah Markiewitz at mmarkiewit@aol.com.

Since the High HolyDays, the Caring Committee has received several requests for **Suzy Grumbacher's delicious apple cake recipe**. She has graciously agreed to share it with everyone. Enjoy!

Ingredients

4 apples in small chunks
4 eggs
½ cup sugar
3 tsp baking powder
4 tsp cinnamon
¾ tsp salt
3 cups flour
2½ tsp vanilla
2 cups sugar
1 cup oil
¼ cup orange juice

Instructions

Preheat oven to 350 degrees. Grease and flour a tube pan or a 9 x13 pan. Peel apples and cut them into small chunks. Mix with ½ cup sugar and 4 tsp cinnamon and set aside. Combine oil and sugar in a mixing bowl and beat until blended. Add eggs and beat well. Combine flour with baking powder and salt. Add half to mixture in bowl and beat well. Add orange juice and vanilla. Then beat. Add remaining flour mixture. Mix well. Pour half of batter in pan, then half the fruit. Pour remaining batter and then the remaining fruit. Bake 1 to 1½ hours or until cake springs back when lightly pressed with fingertip.

Sisterhood Events

Mahjong Mondays - Join us from 11:00 AM - 1:00 PM January 8, 2024. Play the fun and exciting game of Mahjongg! Beginners are welcome! We'll try to break up into groups of four with beginners grouped together and more experienced players grouped together. Please RSVP to Missy Rosenthal at mmrosenthal@comcast.net so we know how many people to expect, how many sets we will need and if you consider yourself a beginner or experienced player. If you have a set and mahjongg card(s), please bring them!! We'll provide snacks and drinks!!

Sisterhood Books and Bagels

All discussions will begin at 9:30 AM. There is a cover charge of \$5 (or \$4 plus a nonperishable item for Joseph's Pantry) for those attending in person. RSVP to Heather Margolin h.m.margolin@gmail.com or 302-477-0737 at least one week prior to the event. We look forward to seeing you there!

February 11, 2024: **"The Oppermanns,"** by Lion Feuchtwanger First published in 1934 but fully imagining the future of Germany over the ensuing years, The Oppermanns tells the compelling story of a remarkable German Jewish family confronted by Hitler's rise to power.

April 14, 2024: **"Three Floors Up,"** by Eshkol Nevo (Author), Sondra Silverston (Translator) Set in an upper-middle-class Tel Aviv apartment building, this best-selling and warmly acclaimed Israeli novel examines the interconnected lives of its residents, whose turmoil, secrets, unreliable confessions, and problematic decisions reveal a society in the midst of an identity crisis.



CHOCOLATE PEPPERMINT COOKIES

BY JAMIE GELLER



INGREDIENTS

- 2 cups all-purpose flour
 - 1 teaspoon baking powder
 - ½ teaspoon baking soda
 - ½ teaspoon kosher salt
 - ½ cup cocoa powder
 - 1½ sticks vegetable shortening
 - 1 cup granulated sugar
 - 2 large eggs
 - 1 teaspoon peppermint extract
- 4 tablespoons crushed peppermint candies

PREPARATION

1. Preheat oven to 350°F. Line a baking sheet with parchment and set aside.
2. In a medium bowl, combine flour, baking powder, baking soda, salt and cocoa powder and whisk together. In an electric mixer fitted with the paddle attachment, cream shortening and sugar for 2 minutes or just until pale and fluffy. Add eggs, one at a time, beating well until fully incorporated. Add peppermint extract and mix well. Slowly mix in dry ingredients and beat on low speed until mixture comes together and forms a ball. Scoop out 1-inch balls and roll between the palms of your hands. Place on parchment paper and flatten with fingers or a spatula to about 1/8" thick. Sprinkle cookies with crushed candy and bake 13 to 15 minutes or until set. Cook 5 minutes on sheet pan and transfer to a wire rack to cool completely. Serves 24.

List of Funds to Donate to at CBE

ABLEMAN LITURGICAL ARTS FUND - Provides programs, contemporary worship or special musical events during Jewish Music Celebration.

PAUL AND LILLIAN CRAMER

MEMORIAL FUND - To purchase equipment, and to enrich school educational programs; to fund capital improvements and maintenance to Temple property.

FAMILY ASSISTANCE - For needy families.

HARRY AND ESTHER JACOBS

MEMORIAL FUND - For Adult Education and other special programs.

KEIL-HERRMANN MEMORIAL FUND - To support annual Scholar-in-Residence lecture series.

BERNARD KRESHTOOL MEMORIAL FUND - For Living Judaism programs such as Adult Jewish Education.

MILTON & HATTIE KUTZ SCHOLARSHIP FUND - To help defray expenses of our youth at Jewish camps, conclaves, Gratz High School, as well as school tuition.

EDITH LABOVSKY MEMORIAL FUND FOR STUDENT VISITS TO ISRAEL - Assistance for Youth and Family Education.

DR. LEO AND JULIA B. BLUMBERG SCHOLARSHIP FUND - For the same such purposes as the **KUTZ FUND**.

DIRECTOR OF LIFE LONG LEARNING DISCRETIONARY FUND - for the Religious School

LIBRARY FUND - To purchase books for the library.

MARGARET MAY MEMORIAL JEWISH FAMILY LIFE EDUCATION FUND - For Jewish educational programs.

MAZON - A Jewish Response to Hunger - fundraising to help solve the problem of hunger.

RAYMOND AND ESTHER MCDONALD MEMORIAL FUND - For activities relating to the State of Israel.

RABBI GRUMBACHER MUSIC FUND - To promote Jewish music with guest musicians and purchase music.

PRAYER BOOK FUND - funding for prayer book and bookplates call the office for pricing.

RABBIS'/CANTOR'DISCRETIONARY

FUNDS - To support Jewish causes, pursue acts of loving kindness, etc. **Rabbi and Cantor has a separate fund.**

ROSENTHAL JEWISH BOOK MONTH LECTURE FUND - To promote Jewish Literature and a biannual lecture.

SOCIAL ACTION FUND - To be used at the discretion of the Social Action Committee for local groups in need i.e. Sojourner's Place.

TEMPLE FUND - Undesignated contributions - for general congregation purposes.

VANCE BOLEN MEMORIAL FUND - To support Cadet Aides.

PEARL K. BREGMAN MEMORIAL FUND - fund available for use by the Caring Community Connection Committee.

ALICE SCHIFF MEMORIAL FUND - needs recommended by the Endowment Fund Committee and the Board of Trustees.

ADULT AND YOUTH CHOIR FUND - to promote and support the Adult and Youth Choir needs.

LEONA ELKINS SCHOLARSHIP FUND - awarding need based scholarship to students of CBE studying Hebrew or advanced Hebrew Studies at CBE, Gratz Hebrew High School or education programs in Israel.

RABBI HERBERT E. DROOZ & FLORENCE Z. DROOZ FUND - awards for scholastic excellence.

JUDGE STIFTEL AND YAFFEE FUND - needs recommended by the Endowment Fund Committee and the Board of Trustees.

THE HARRY & BLANCHE WOLPERT FUND - Family assistance fund .

STAT FAMILY GIFT FUND- Religious School camp and Israel trip scholarships

HAROLD & BEATRICE SNYDER CAMP HARLAM FUND- For Camp Harlam Scholarships.

MILTON & GAIL WAHL FUND - subsidize the publishing of The Orbit.

THE MEMBERSHIP ASSISTANCE FUND - to assist families or individual to pay the minimum dues.

CARING COMMUNITY COMMITTEE – To support the Beth Emeth community with care baskets, driving needs, food, cards, etc...

THE CONGREGATION BETH EMETH EDUCATION FUND – or supplies and programs for educational needs.

THE IRENE PACKLES MEMORIAL FUND FOR HIGH SCHOOL SENIORS- Contributions made to this fund will enable our high school students to make the transition to college more easily, with regard to their Jewish identity.

THE LARRY ISAKOFF MUSIC PERFORMANCE FUND- income from this fund will be used to pay for musical events such as cantorial and choir concerts, musical plays, etc.

YOUTH AND FAMILY PROGRAMMING – for youth and family programs.

THE HOLOCAUST GARDEN MAINTENANCE FUND – Maintenance of the Holocaust Garden

THE TORAH REPAIR FUND – To repair the Torah.

THE SCHOLARSHIP FUND - to provide funds for Religious School and Camp scholarships.

HOSPITALITY FUND – to help with noshes, onegs and other events

JOSEPH'S PANTRY (Beth Emeth Food Pantry) – to provide funds for the purchase of food in order to supplement in-kind donations

JOSEPH ZIMMERMAN MEMORIAL MUSIC FUND – to fund the hiring of a professional cellist during Kol Nidre.

Notice

All contributions sent to the temple should be made out to **"Congregation Beth Emeth."** If a special fund is desired, its name should be noted on the memo line or in an accompanying letter. Thank you for your cooperation.

A Note about Contributions

We welcome all contributions. If you wish the contribution to be listed in *The Orbit*, there is a minimum donation of \$10. This also covers the mailing of ONE acknowledgement card. Please be sure to include the address if the person(s) are not members of Congregation Beth Emeth. The card is mailed when the check is received.

It is important that, when you send in a donation, you write specifically how you want the donation listed. Please include a note with your check, printed clearly or typed, stating exactly how you want the contribution to read. For example: Mary and John Doe in memory of..., Mr. and Mrs. John Doe in honor of..., Mr. John and Mrs. Mary Doe in beloved memory of....

Please remember to write legibly and to list which funds you would like your donation to go to. Please make your check payable to Congregation Beth Emeth. Also, *The Orbit* usually runs three weeks ahead of schedule so it may take three weeks for your donation to appear in *The Orbit* from the date you mail it. Thank you for your cooperation.



Are you receiving j-VOICE Monthly?

THANKS TO A PARTNERSHIP BETWEEN JEWISH FEDERATION OF DELAWARE AND CONGREGATION BETH EMETH, congregants can enjoy a complimentary subscription to j-VOICE Monthly, an award-winning publication whose mission is to provide the Delaware and the Brandywine Valley community with a high-quality resource that educates, informs and inspires our community through a Jewish lens.

We Grow Stronger TOGETHER

Subscribe to j-VOICE Monthly at:

- ShalomDelaware.org/publications/jewish-voice-subscription
- call 302/427-2100 or
- email Danaw@ShalomDel.org

To receive our j-VOICE Weekly email, go to:

- ShalomDelaware.org/publications/j-voice-signup
- call 302/427-2100 or
- email Danaw@ShalomDel.org



Your Old Shoes Can Help Stamp Out Cancer Recycle Your Shoes



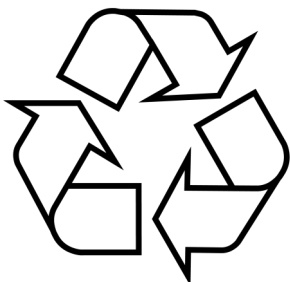
Did you know that your old, no longer used shoes can help to stamp out cancer? In cooperation with Community Recycling and Stand Up 2 Cancer (SU2C) **Congregating Beth Emeth** is taking part in a unique fundraising drive that we hope you will consider supporting. ***It will cost you no money!*** Participating is simple. **Congregating Beth Emeth** is collecting used shoes for reuse. This international shoe recycling program collects used shoes for distribution to poor regions all over the world (including areas in the USA). For each container filled with shoes a donation will be made to Stand Up 2 Cancer.

Our community will benefit as well. Not only will your recycled shoes help raise funds for SU2C, it will also keep more shoes out of our local landfills---and free up some space in your closet.

- **Drop off your used shoes in the shoe recycling container in the lobby of Congregating Beth Emeth** As each container is filled they are shipped to the Community Recycling organization for distribution to those in need. SU2C receives a small donation for each container that we fill.
- You get to free up some closet space while helping to reduce landfill waste
- Ask your family, friends, neighbors and co-workers to participate

Thank you very much for helping to stamp out cancer.

DROP OFF YOUR SHOES to the shoe recycling box in the lobby at Congregating Beth Emeth



for information about SU2C please visit



Payments Made with Stock

Beth Emeth is working with LPL Financial to trade securities. Congregants who wish to make a donation or pay their commitment with stock, please follow these instructions:

1. Direct your broker to transfer stock to Beth Emeth's broker, **LPL Financial at 800-724-2120**. They should tell LPL that the stock is to be credited to the account titled **Congregation Beth Emeth (DTC# 0075; Account number: 6772-1990)**.

2. Once the stock is transferred, please notify Jon, Lisa, or Lori in the business office, that you have transferred stock, so that your account may be credited. They will need the following information:

- Your name,
- Number of shares that you sold,
- Name of the stock,

What the stock is paying for (i.e., commitment).

Please call the business office at 302-764-2393 If you have any questions.

A Note from Rabbi Robinson

Every morning when Jews worship, we recite these words from the Mishnah: "These are the duties whose fruit a person enjoys in this world, while the reward is saved for him in the world to come: ...acts of loving-kindness ...and visiting the sick..."

Whether or not we believe in a heavenly reward of some kind, clearly there is a sense that *bikur cholim*, visiting the sick, is an essential aspect of Jewish life. This is reaffirmed in the Talmud and other rabbinic writings throughout the ages. We read in the Babylonian Talmud, (Nedarim 39b if you want to look it up), "It was taught: There is no measure for visiting the sick. What is meant by, 'there is no measure for visiting the sick?' R. Joseph thought to explain it: its reward is unlimited. Said Abaye to him: Is there a definite measure of reward for any precept? But we learnt: Be as heedful of a light precept as of a serious one, for thou knowest not the grant of reward for precepts? But Abaye explained it: Even a great person must visit a humble one. Raba said: [One must visit] even a hundred times a day. R. Abba son of R. Hanina said: He who visits an invalid takes away a sixtieth of his pain. Said they to him:

If so, let sixty people visit him and restore him to health?"

Sickness can take different forms, of course; from the aged shut-in to the post-partum mother, to the person recovering from surgery or in remission of chronic illness of any age. Regardless, as Jews, we have an obligation to reach out and be supportive.

There are many ways to do that. We pray our *mi sheberach* prayer every Friday. Our Caring Committee, led by Beth Anne Gluck, strives to visit shut-ins and congregants in nursing homes, makes soup to take to those recovering from illness once they've returned home, and regularly checks up on those who need a little TLC. Our Brandywine Village Network provides opportunities for volunteering to help our seniors in Brandywine Hundred. Our Jewish Federation tries to send their chaplain to visit when Jews are hospitalized, regardless of affiliation. And, of course, I and the rest of the clergy team make calls and visits when someone is in the hospital.

Here's the problem, though. We can only visit, or check up on, or call people *when we know they are ill or hospitalized*. Yes, sometimes we get a list from the hospital, but not always. Yes, sometimes a friend might remember to call. But too often, we find out *afterwards*. And sometimes a long time afterwards, months or even a year after a person has had surgery or suffered an illness. No one should have to suffer without community support; that is what we're here for. **BUT WE CAN'T DO IT WITHOUT YOUR HELP.**

So, if you'll permit me, I have two requests for help:

IF YOU KNOW SOMEONE IS IN THE HOSPITAL OR ILL, PLEASE LET ME AND THE CLERGY KNOW. Please don't assume we know, and even if we do, I'd rather hear twice than not at all.

If you're capable of volunteering for the Caring Committee to help, whether it's writing cards or making soup or visiting the sick directly, **PLEASE DO.**

In this way, we as a community can fulfill those words of our tradition and, more importantly, do the work God compels us to do for one another.



The Congregation Family gratefully
acknowledges the followg contributions:

"Nobody is ever impoverished through the giving of charity." ~ Maimonides

RABBI ROBINSON DISCRETIONARY FUND

In appreciation of Rabbi
Robinson from **Leena &
Mira Jade**

In appreciation of Rabbi
Robinson from **Mr. & Mrs.
Vaughan C. Sawdon**

In memory of Bessie
Silverman and Joan
Colton Helfand
from **Steven & Rory
GODOWSKY**

In memory of my wife
Shawn Snyder
from **Stuart Snyder**
In memory of Rose Marie
Agoos from **Susan &
Steve Herrmann**

CANTOR PELLEN'S DISCRETIONARY FUND

In memory of Sylvia
Herschbein from **Barbara
Aronstam**

In memory of Morris Perry
from **Susan & Malcolm
Cobin**

ADULT AND YOUTH CHOIR FUND

In memory of Morris
Shapiro from **Ira Tartack**

BERNARD KRESHTOOL MEMORIAL FUND

In memory of Martin Goetz
from **Larry and Kim Drexler**

CARING COMMUNITY COMMITTEE

In memory of Anne
Gellender from **Rose & Alan
Ebner**

In memory of Bob Malm
from **The Merritt Family**

JOSEPH ZIMMERMAN MEMORIAL MUSIC FUND

In memory of Marion
Zimmerman from **Laurie
Ross & Steven
Zimmerman**

JOSEPHS PANTRY

In memory of John R.
Derrickson, Jr. from **Kim &
Alan vonWeltin**

In memory of Bob Malm
from **Barbara Aronstam**
In memory of Bob Malm
from **David C. Margolies &
Sheila Hochhauser**

In memory of Robert Malm
and Jerry Rudnitzky
from **Harriet Ansul**

In honor of Deb and Pat
Heffernan's anniversary
from **Jeffrey D. Merritt**

In memory of Bob Malm
from **Jeffrey Merritt
Judith Dorfman**

In loving memory of
Charles Felix and
Bernice Schnitman
from **Judith Insinga**

In memory of Bob Malm
from **Judy Dorfman**

In memory of Woody
Bass from **Nancy
Selzer, Sara Bass,
Marc & Ro Bass**

In memory of Anne and
Jack Rubenstein and
Bob Malm from **Toby
Rubenstein**

In memory of Dr. Irving
Wallis & Mary Steinbach
from **Greta & Larry
Wallis**

LIBRARY FUND

In memory of Sara
Weiner from **Madeline &
Alan Rubinow**

RABBI GRUMBACHER DISCRETIONARY FUND

In loving memory of fa-
ther, Dr. Benjamin
Steinbach, mother,
Cecille Steinbach and
grandmother, Jennie
Ozer from **Dr. Greta &
Larry Wallis**

**RABBI GRUMBACHER
MUSIC FUND**

In memory of Charles H.
Simmons, Jr. from **Chick &
Sherry Simmons**

TEMPLE FUND

In appreciation of Rabbis
Grumbacher and Robinson
from **Alan Mann**

In memory of Marsha Lee
from **Ann P. Newman**

In memory of Rebecca
Souriano from **Carmen &
Stephen Shappell**

In memory of John R.
Derrickson, Jr. from **David
Margolies & Sheila
Houchhauser**

In loving memory of moth-
er, Bette Parsons, David
Scher and Ethel Scher
from **Donald & Ethel
Parsons**

In memory of Jonathan
Mason from **Doris Heisler**

In memory of David David
and Sylvia David
from **Israel David**

In memory of Samuel
Joseph from **Judith B.
Joseph**

In memory of David
Drexler from **Karen
Jacobs**

In memory of Helen Davis
Johnston, beloved
grandmother from **Michael
Stape**

In memory of George
Markowitz from **Martin &
Frances Markowitz**

In memory of Herman
Polss & Roscoe Pressly
from **Perry Polss**

In memory of my father,
Richard P. Allen.

from **Rachel D. Allen**

In memory of Mildred
Flippen from **Richard &
Dorothy Flippen**

in memory of Joel Edward
Antinoph from **Richard R.
Antinoph**

In memory of Irv Hockstein
from **Sara Hockstein**

In loving memory of Jack
Lawlor, Joan & Norman
Balick from **Steve, Laura,
Ashley, Taylor & Lindsay
Balick**

In memory of William
Margolin from **Steven &
Heather Margolin**

In memory of Florence
Kaufman from **Sue &
Chuck Milazzo & Family**
In honor of the wedding of
Danny & Sammy from **Sue
Paul**

In memory of Frances
Weinstein from **Susan &
Gary Gooden**

In memory of Stella Rovine
from **The Rovine Family**

In memory of Marsha Lee
from **Timi Lee, Rachel Lee
Garofolo & Scotti Lee**

In memory of David A.
Drexler from **William
Sudell**

The Werkheiser Family

In memory of David Alan
Drexler from **Morris,
Nichols, Arsht &
Tunnell, LLP**

**THE CONGREGATION
BETH EMETH
EDUCATION FUND**

In memory of Steven
Wishnow from Linda and
Paul **Akell and Family**
In memory of **Bernard
Levy from Hollie Lyko
and Zachary Roth**

TORAH REPAIR FUND

In memory of William
Tartack from **Ira Tartack**

Visit us at www.bethemethde.org or call at 302.764.2393

Yair D. Robinson, Rabbi • Peter H. Grumbacher, Rabbi Emeritus
Elizabeth F. Pellen, Cantor • Rachel Allen, President
Jonathan I. Yulish, Executive Director
Eliana M. Hall, Director of Life Long Learning

Address or phone number change, call or email: lwyzga@bethemethde.org

Funded by The Milton and Gail Wahl Fund



CONGREGATION BETH EMETH

300 W. Lea Blvd.
Wilmington, DE 19802

SCHOLAR-IN-RESIDENCE

RABBI FELDMAN

JANUARY 12-14, 2023

Rabbi Feldman will speak relating to her social justice work and MLK day

Friday, Jan. 12, 2024 • 7:30 pm—8:30 pm

Discussion

Saturday, Saturday, January 13, 2024 • 9:30 am—11:00 am

Bagel Breakfast & Study

Sunday, January 14, 2024 • 9:30 am—11:00 am

Scholar-in-Residence Breakfast & Book Signing

For more information go to <https://www.bethemethde.org/> or call office 302-764-2393

Made possible by the Bernard Kreshtool Memorial Fund and the Keil-Herrmann
Memorial Funds