



Light of God's House

CONGREGATION BETH EMETH

Orbit

300 West Lea Blvd, Wilmington, DE 19802 • 302-764-2393 • bethemethde.org

VOLUME XLVII • NO. 6 22 SHEVAT - 20 ADAR 1 5784 • FEBRUARY 2024



A GOOD QUESTION

YAIR D. ROBINSON
(HE/HIM)

Are you ready for summer yet? I know, I know, it's only February, and it has been a mostly mild winter this year, but I miss the sun, the (seasonably appropriate) warmth, and the chance to be at camp.

Yes, I still go to camp! Specifically, to URJ Camp Harlam, our reform movement camp in the Poconos, where I have served on faculty for over 13 years. There is nothing like being at camp with the kids, the other faculty (rabbis and cantors and educators from around the region), as well as the staff, experiencing Judaism in an authentic way. Does that mean that our experience in Wilmington is inauthentic? Hardly, *but* when I go as faculty to Harlam, I see Jewish children and teenagers—including many of our own kids—celebrate Shabbat and celebrate each other, use Hebrew expressions like *cheder ochel* (dining hall) and *nikkayon* (cleanup) and recite prayers such as *hamotzi* and *birkat hamazon* as casually as they would use English. Certainly theirs is a normal camp experience, filled with hiking and rock climbing, boating and swimming, arts and crafts and music and exploring the wonders of technology, but all of this is enhanced with song sessions after meals, spending time with young Israeli men and women and talking with them about *ha'aretz*—the Land of Israel, and gathering for Shabbat,

SHABBAT SHALOM

Friday, February 2, Kabbalat Shabbat Service, 7:00 PM; or join us at www.bethemethde.org.

Rabbi Robinson will speak

Birthday Blessings for the month of February

Saturday, February 3, Torah Study and Service Combination, 9:30 AM

"Yitro," Exodus 18:1-20:23; Isaiah 6:1-7:6, 9:5-6

Friday, February 9, Heritage Shabbat Service, 7:00 PM; or join us at www.bethemethde.org.

Adult and Youth Choirs will perform

Saturday, February 10, Torah Study and Service Combination 9:30 AM; B'nai Mitzvah Family Workshop, 9:30 AM

"Mishpatim," Exodus 21:1-24:18; Isaiah 66:1-24

Friday, February 16, Shabbat Service, 7:00 PM or join us at www.bethemethde.org.

Rabbi Robinson will speak

Saturday, February 17, Torah Study and Service Combination 9:30 AM

"Terumah," Exodus 25:1-27:19; I Kings 5:26-6:13

Friday, February 23, Federation Shabbat Service, 5:30 PM, at the Jewish Community Center (no service at CBE)

Saturday, February 24, Shabbat Study and Schmooze, 9:00 AM

"Tetzaveh," Exodus 27:20-30:10; Ezekiel 43:10-27



dressed all in white, on a hill overlooking the green mountains of the Poconos, celebrating under a canopy of leafy trees and blue sky.

Their experience at camp, heir *Jewish* experience, delivers a kind of authenticity one cannot capture easily at home or in synagogue or even in a camp 'full of Jews'. Their experience is unique and special, and one I would encourage you to consider for your own children this year. Talk to anyone who's sent their kids to Harlam, and they'll wax rhapsodic about what a positive experience they had; how fun it was, and the friends they made. And you might see that their connection to Judaism is that much deeper. I'm proud to say that, once again this year, I will be there as faculty second session. This adds another dimension for the kids; a chance for them to get to know me (and I get to know all of them!) in a different, more relaxed setting. And I have watched more than one student go from child camper to young staffer to become bright, mature, engaged adults, whose best friends are still the ones they made at Harlam (or 6 Points Sports, or 6 Points Science & Technology, or 6 Points Creative Arts Academy in West Chester PA, or another Jewish camp in the region!). It's always a joy to see what camp makes of people.

If you are interested in sending your children to either Camp Harlam or one of the 6 Points camps this coming summer, or another Jewish camp (defined as qualifying for One Happy Camper scholarship money, or is listed on the Foundation For Jewish Camps' jewishcamp.org website) please see me, or Cantor Pellen (who's going back to 6 Points Creative Arts), or Moret Eliana, or talk to one of the many parents here at Beth Emeth who have sent their kids year after year to one of those special places. ***There is ample scholarship money available for your child to attend a Jewish Camp.*** Your children deserve to have not only a fun summer, not only an authentic camp experience, but an authentic Jewish experience at camp.

On an unrelated note, this year, Federation Shabbat is a little different. We'll be celebrating on Friday, February 23 at the Siegel JCC. As always, it's a wonderful opportunity for our whole Jewish community to be together, and I think we can agree that, after this past fall, and the horrors of October, we are in need of

more opportunities to be together in support and celebration. More information will be coming, but I hope you will make a point of coming together.

Joseph's Pantry



Joseph's Pantry is an emergency food pantry hosted by Congregation Beth Emeth. Its goal is to provide a three-day supply of food and toiletries on an emergency basis, for residents of Wilmington, and specifically, for those in need, in the Ninth Ward. The hours of operation are: Tuesday afternoons, from 3:00 PM until 6:00 PM. The pantry is always in need of donations and volunteers. Some of the items that are currently on the pantry's Wish List are: toilet paper, paper towels, napkins, canned vegetables, pasta, pasta sauce, macaroni and cheese, canned fruit, laundry detergent, and menstrual products. Donations can be dropped off at Beth Emeth or can be ordered online and shipped directly to the synagogue.

Thank you for your support.

Quote of the Month

"One cannot and must not try
to erase the past merely
because it does not fit the
present"
Golda Meir

Need a ride? Or help around the house?

Brandywine Village Network is here for you!



Helping you live just where you want . . . at home.

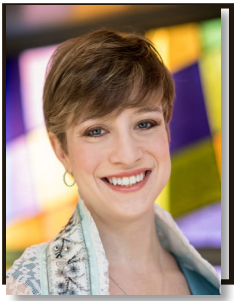
**Care Management
Volunteer Support
Social & Wellness Activities**

*An aging in place initiative of
Jewish Family Services of Delaware*

www.brandywinevillagenetwork.org

302.478.9411





CANTOR'S CORNER



ELIZABETH F. PELLEN

(SHE/HER)

As I sit down to write this article, I am shocked how quickly time seems to have passed. Already we are in the new year, February is nearly upon us. It is at this point in the year that I begin to get a little giddy and goofy and my mind focuses almost completely on one thing: the Purim Spiel.

Now, we all know that Purim does not always occur at the same date in the Gregorian Calendar, but its Hebrew date is Adar 14, almost always falls sometime in February or March which means that during that time you can usually find me running around the synagogue with various props, costumes or up to other shenanigans. Purim is my favorite holiday and yet, if I am honest, sometimes it makes me crazier than the High Holy Days! Prepping for the Purim Spiel is no small feat. There are dozens of moving parts, from acting rehearsals to costume fittings, to prop acquisitions, to choir rehearsals and tech rehearsals and more. It is, quite frankly, enough to make my head spin.

I am fortunate though, to have an incredible team of volunteers who help me put the show together each year. There are many participants of the spiel that are visible – from my amazing cast members to my enthusiastic choir members and they regularly get recognized for their hard work. I wanted to take this opportunity of my Orbit article to give accolades to those wonderful team members who behind-the-scenes help bring our spiel to life.

First and foremost, Judy Goldbaum, a retired drama teacher has been my right hand in organizing the cast (mostly religious school kids) and crew for every spiel. I simply would not have survived my first Purim at CBE without her! Secondly, if Judy is my right hand, HarrietAnn Litwin is my left! She has been my go-to person for every single miscellaneous task I can (and cannot) think of! From corresponding with the choir to helping communicate with parents about costumes to taking notes of

stage directions, she does it all and I am so grateful.

Cheryl Hampson and Jan Zimmerman have been my costume crew for the past two years and it has been a wonderful addition to the entire experience. Jan's enthusiasm and creativity is invaluable. Cheryl, for those who do not already know, is a gifted seamstress and creative mind who has made many of the costume elements for the kids.

Finally, I want to mention Kim vonWeltin and Zachary Pellen who, without fail, volunteer for any and every miscellaneous task that needs to be done. From lyric PowerPoints, to helping get kids ready for their cues to handling the karaoke tracks – she is my extra set of hands when mine are full! I know that we will need plenty of extra tech help as we navigate livestreaming the spiel this year with our new livestream system!

I hope that anyone reading this will be sure to thank them for their hard work the next time they see them. They deserve it! I am so grateful to them and all they do. I could not pull off the spiel without them!

I look forward to showing off our newest spiel production – The Barbie Megillah – next month on March 22!



**BETH EMETH
MEMORIAL PARK**

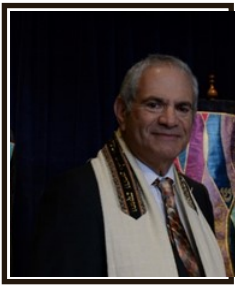
FAULKLAND RD.

OFF DUPONT RD.

FOR INFORMATION

CALL

302-764-2393



FOCUS EMERITUS

RABBI PETER H. GRUMBACHER

"It Happened in February"

Just a perusal of newsworthy items that occurred during the month of February points to our influence/status/condition/you name it, in world history. Israel is tiny yet has the world's attention over and over again. Of course, it has the attention of the United Nations, and once more the hypocrites of the UN are showing their true colors.

Well, having gotten that off my chest, let's just take a look at what happened in the month of February in relation to things Jewish:

Exactly twenty years ago on the first of the month, Israeli astronaut Ilan Ramon died in the Shuttle Columbia disaster.

On February 3 in 2000 Alan Greenspan was confirmed for his fourth term as chairperson of the Federal Reserve. Also, I was born in '47.

On the 5th back in 1840, a suspicious death led to the Damascus Affair blood libel.

Eighty years ago on the 6th, the Jews of Salonika, Greece were forced to wear the yellow star; and sixty-three years ago, I celebrated my Bar Mitzvah.

On February 9th exactly 40 years ago, the US delivered the first batch of F-16's to Israel.

Mark Spitz, the great Olympian, will turn 73 on February 10th. Geez, is he old!

Natan Sharansky, the Soviet Refusenik, arrived in Israel February 11th 1986!

What a breakthrough when on February 21st Egypt opened an embassy in Israel in 1980.

A lot more happened in the intervening days in various years, but you get the point. To be clearer though, it's good to study a bit of Jewish history. Names and events are important; dates are probably of lesser importance. But knowing about our past gives us a proper understanding of the ups and downs of our history.

Change of Address Reminder

Don't forget to contact the temple office at 302-764-2393 to change your address or you may now change your address online. Simply go to our website at www.bethemethde.org and log in as a member. You can manage your account details online. If you have not yet logged in and need a password, contact the office and we will send you a link.

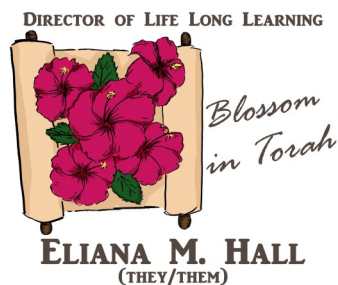
You can also update your telephone number or email address, the same way. Most of the temple correspondence is mailed third class. The post office does not forward any third class mail.



Orbit Submission

Articles for the March 2024 issue of the Orbit are due on Wednesday, February 7, 2024 at 9:00 AM. Please email any articles to Lori at lwynga@bethemethde.org.





Bereshit is a long, long book. Whether you count letters, words, verses, or whole chapters, *Bereshit* has more of them than any other book of Torah, so I am always a little surprised when we finally finish it and get to *Shemot*, the book of Exodus. Finally, a change of scenery! Now we get to the part where we become B'nai Yisrael, the Children of Israel. What a relief! Much of the book of Exodus can be disconcerting to read, however. We see plagues and the Israelites are running from a vast army, and there is widespread discontent and general uncertainty. By the time we get to the golden calf, we almost wish we could go back. Our ancestors certainly did.

It turned out that B'nai Yisrael were not as ready for the next chapter as they thought they were. Moses and God need to catch the Children of Israel doing something good and run with it. A group project that gets everyone working together will do the trick. Something long-term and with enough detail to engage all the different personalities. The building of the Mishkan, the movable worship space that they will carry through the desert seems to do the trick. The description in *Parashat Vayakheil* is magnificent in its detail. The instructions name individuals but also include those without specific tasks. Everyone gets involved. Creating sacred space became a group project, and suddenly there was less fighting and bickering. Was it merely that the Israelites had too much to do to continue arguing with one another? Perhaps, but I imagine surviving in an unfamiliar desert takes a fair bit of effort even if you are not building a Tabernacle for God.

What *Bereshit* is missing that *Shemot* has is shared vision, emphasis on the word "shared." In Exodus 35:21 we read, "And everyone who excelled in ability and everyone whose spirit moved them came, bringing to Adonai their offering for the work of the Tent of Meeting and for all its service and for the sacral vestments." It did not matter whether you had a specific set of skills or just lots of enthusiasm. A shared vi-

sion works wonders for groups large and small, whether we are feeding the hungry, building a complex structure for God, or dedicating a space to working with one another on a different kind of holy work.

One of our strengths at Congregation Beth Emeth is finding our shared visions and making them reality as a community. In the past few years, several of our shared visions have become reality. From Sacred Grounds to our Code of Ethics and from accessibility to a robust Adult Learning calendar post-Covid, we excel at finding new ways to move forward, and the fruits of our labor are available for all of us to enjoy together. As I type this, we are just a few days from beginning *Shemot* in our cycle of reading Torah. We will set off into the desert with the new secular year with the enthusiasm that defines our community so well. I am looking forward to another trip around the sun and journey through the desert with Congregation Beth Emeth. As we set off, I cannot help wondering what our next shared vision for our community will be.



Shabbat Study & Schmooze



Join Rabbi Robinson this Saturday mornings, **February 24, March 23, April 27 and May 25** at 9:00 AM, for in-person (NO ZOOM) brunch and Torah

study at Congregation Beth Emeth! Bagels and shmeer, coffee, a chance to study together and be in community together, live and in-person.



PRESIDENT'S MESSAGE



RACHEL ALLEN
(SHE/HER)

While we are in the midst of the cold winter, it is hard to start thinking about summer. It is, however, time for parents of school-aged children to start thinking, and acting, if their children are going to attend summer camp. There are so many wonderful and different options that are available to children these days, including Jewish summer camps.

Jewish summer camps are a wonderful way to continue not only religious education through the summer, but to also continue to help foster Jewish identity in our children. Summer camps present our children with the unique opportunity to experience joy and discovery in an immersive communal Jewish setting. It provides time for our students to learn, engage, and find the joy and fun in their Jewish identity. Studies have shown that there is a pronounced increase in Jewish engagement and communal identity from Jewish camp alumni as adults.

Our students who attend Jewish summer camps come home with new friends that last through the years. As children share cabins, meals, and adventures, they develop interpersonal skills, empathy, and a strong sense of camaraderie. These shared experiences through the summer create strong and longstanding friendships and networks of support that last a lifetime. The bonds formed in these settings are rooted in shared values, creating a foundation for enduring relationships.

As our children grow, the opportunities for them to continue to be engaged with our Jewish community grow, from national youth groups (including NFTY), to travel to Israel, and so many social justice programs. Many of the friendships that start at Jewish summer camp continue through those programs.

Summer camps also present our students with additional opportunities to be immersed in the Jewish community as a whole. Children learn about Jewish values through experiential activities. The various programs incorporate Jewish teachings into daily life, reinforcing values such as compassion, responsibility, and

respect. Camp also offers a chance for our students to spend the summer outdoors and lessons on Jewish values are enhanced through outdoor activities, from hiking and zip lining, to outdoor Shabbat services.

I also want to remind families that Beth Emeth has scholarships available for families that want to send their children to summer camp but are concerned about the fees. Please do not hesitate to reach out; the scholarships are there for a purpose and should be used to benefit our children. Our Scholarship Chair, Bruce Sachais, or I would be happy to speak with you regarding these opportunities.

If you have questions about Jewish summer camp, please do not hesitate to reach out. We can always connect you with other families who are already sending their children to camp, or families with grown children who can tell you stories and share experiences, and even with the staff of our Jewish overnight camps who can talk about what they do to ensure that your children are safe and enjoying their time at camp.



Schoenberg Memorial Chapel

*Dedicated to serving our community
with Compassion, Competence and Dignity*

519 Philadelphia Pike

302-762-0334

February 2024

Sunday	Monday	Tuesday	Wednesday	Thursday	Friday	Saturday
				1 (22 Sh'vat)	2 (23 Sh'vat) 7:00pm Kabbalat Shabbat Service 8:00pm Oneg	3 (24 Sh'vat) Yitro 9:30am Torah Study & Service Combination
4 (25 Sh'vat) 9:00am Religious School 12:00pm Knitting Club 12:00pm Chess Club	5 (26 Sh'vat) 12:00pm Sisterhood Cooking for Emmanuel Dining Room	6 (27 Sh'vat) 12:00pm Stocking for Joseph's Pantry 3:00pm Joseph's Pantry Open	7 (28 Sh'vat) 4:45pm Hebrew School 7:00pm Choir Rehearsal	8 (29 Sh'vat)	9 (30 Sh'vat) Heritage Shabbat Adult & Youth Choirs Perform 7:00pm Shabbat Service 8:00pm Oneg	10 (1 Adar I) Mishpatim 9:30am Torah Study & Service Combination 9:30am B'nai Mitzvah Family Workshop
11 (2 Adar I) 9:00am Religious School 9:30am Books and Bagels	12 (3 Adar I)	13 (4 Adar I) 12:00pm Stocking for Joseph's Pantry 3:00pm Joseph's Pantry Open 7:00pm Board Meeting	14 (5 Adar I) 4:45pm Hebrew School	15 (6 Adar I)	16 (7 Adar I) 7:00pm Shabbat Service 8:00pm Oneg	17 (8 Adar I) T'rumah 9:30am Torah Study & Service Combination
18 (9 Adar I)	19 (10 Adar I) Presidents' Day Building Closed	20 (11 Adar I) 12:00pm Stocking for Joseph's Pantry 3:00pm Joseph's Pantry Open	21 (12 Adar I) 4:45pm Hebrew School	22 (13 Adar I)	23 (14 Adar I) Purim Katan Federation Shabbat at Siegel JCC	24 (15 Adar I) T'tzaveh 9:00am Shabbat Study & Schmooze
25 (16 Adar I) 9:00am Religious School 11:00am Caring Committee Meeting	26 (17 Adar I)	27 (18 Adar I) 12:00pm Stocking for Joseph's Pantry 3:00pm Joseph's Pantry Open	28 (19 Adar I) 4:45pm Hebrew School 7:00pm Purim Shpiel Rehearsal	29 (20 Adar I)		

Caring Committee



The **Caring Committee's SouperHeroes** made a new batch of chicken soup for congregants in need. Containers are stored in the freezer at CBE. Con-

gregants may pick it up themselves or contact Shifrah Markiewitz at mmarkiewit@aol.com, if delivery is needed.



"Our Mission Is Your Life"

Another important aspect of the Caring Committee's outreach is connecting congregants to community resources. One such resource is **The V.I.A.L. of Life** program. This program is a free service provided by New Castle County Emergency Medical Services to all seniors and disabled residents of New Castle County. The Vial of L.I.F.E. stands for *Lifesaving Information for Emergencies*.

The Vial of L.I.F.E program includes a medical information form that, once completed, put into the provided new medication bottle labeled Vial of L.I.F.E. and placed in your refrigerator. The form lists information about your medical history, daily medications, demographics, doctor(s), hospital preference(s) and an emergency contact. This medication bottle is kept in your refrigerator in direct view. A Vial of L.I.F.E., magnet is placed on the front of your refrigerator to signify that you are part of the program. The Vial of L.I.F.E. assists emergency medical services responding to your home. EMS will look for the magnet on your refrigerator and obtain important medical information to assist them in treating you during a crisis, quickly and appropriately.

The Caring Committee has partnered with New Castle County Emergency Medical Services to offer this resource to our congregants. A Vial of L.I.F.E. may be obtained by contacting Beth Anne Gluck at bagluck@comcast.net or 302.521.8987.



CRANBERRY APPLE CRUNCH KUGEL BY JAMIE GELLER

INGREDIENTS

- 1 (21-ounce) can Comstock apple pie filling
- 2 cups fresh cranberries
- 2 tablespoons sugar
- 2 tablespoons light brown sugar
- 1/2 cup flour
- 1/4 cup margarine, cut into chunks
- 1/2 teaspoon cinnamon

PREPARATION

1. Preheat oven to 375 degrees F. Spray a 9-inch round baking dish or deep pie plate with non-stick baking spray.
2. Place apple pie filling and cranberries in prepared dish, mix to combine and smooth into an even layer.
3. In a small bowl, mix together sugars, flour, margarine and cinnamon until crumbly. Sprinkle over apple-cranberry mixture. Bake, uncovered, at 375 degrees for 45 minutes or until crumbles are golden brown. This is best served right out of the baking dish. Serves 8.

Payments Made with Stock

Beth Emeth is working with LPL Financial to trade securities. Congregants who wish to make a donation or pay their commitment with stock, please follow these instructions:

1. Direct your broker to transfer stock to Beth Emeth's broker, **LPL Financial at 800-724-2120**. They should tell LPL that the stock is to be credited to the account titled **Congregation Beth Emeth (DTC# 0075; Account number: 6772-1990)**.

2. Once the stock is transferred, please notify Jon, Lisa, or Lori in the business office, that you have transferred stock, so that your account may be credited. They will need the following information:

- Your name,
- Number of shares that you sold,
- Name of the stock,

What the stock is paying for (i.e., commitment).

Please call the business office at 302-764-2393 if you have any questions.

A Note from Rabbi Robinson

Every morning when Jews worship, we recite these words from the Mishnah: "These are the duties whose fruit a person enjoys in this world, while the reward is saved for him in the world to come: ...acts of loving-kindness ...and visiting the sick..."

Whether or not we believe in a heavenly reward of some kind, clearly there is a sense that *bikur cholim*, visiting the sick, is an essential aspect of Jewish life. This is reaffirmed in the Talmud and other rabbinic writings throughout the ages. We read in the Babylonian Talmud, (Nedarim 39b if you want to look it up), "It was taught: There is no measure for visiting the sick. What is meant by, 'there is no measure for visiting the sick?' R. Joseph thought to explain it: its reward is unlimited. Said Abaye to him: Is there a definite measure of reward for any precept? But we learnt: Be as heedful of a light precept as of a serious one, for thou knowest not the grant of reward for precepts? But Abaye explained it: Even a great person must visit a humble one. Raba said: [One must visit] even a hundred times a day. R. Abba son of R. Hanina said: He who visits an invalid takes

away a sixtieth of his pain. Said they to him: If so, let sixty people visit him and restore him to health?"

Sickness can take different forms, of course; from the aged shut-in to the post-partum mother, to the person recovering from surgery or in remission of chronic illness of any age. Regardless, as Jews, we have an obligation to reach out and be supportive.

There are many ways to do that. We pray our *mi sheberach* prayer every Friday. Our Caring Committee, led by Beth Anne Gluck, strives to visit shut-ins and congregants in nursing homes, makes soup to take to those recovering from illness once they've returned home, and regularly checks up on those who need a little TLC. Our Brandywine Village Network provides opportunities for volunteering to help our seniors in Brandywine Hundred. Our Jewish Federation tries to send their chaplain to visit when Jews are hospitalized, regardless of affiliation. And, of course, I and the rest of the clergy team make calls and visits when someone is in the hospital.

Here's the problem, though. We can only visit, or check up on, or call people *when we know they are ill or hospitalized*. Yes, sometimes we get a list from the hospital, but not always. Yes, sometimes a friend might remember to call. But too often, we find out *afterwards*. And sometimes a long time afterwards, months or even a year after a person has had surgery or suffered an illness. No one should have to suffer without community support; that is what we're here for. **BUT WE CAN'T DO IT WITHOUT YOUR HELP.**

So, if you'll permit me, I have two requests for help:

IF YOU KNOW SOMEONE IS IN THE HOSPITAL OR ILL, PLEASE LET ME AND THE CLERGY KNOW. Please don't assume we know, and even if we do, I'd rather hear twice than not at all.

If you're capable of volunteering for the Caring Committee to help, whether it's writing cards or making soup or visiting the sick directly, **PLEASE DO.**

In this way, we as a community can fulfill those words of our tradition and, more importantly, do the work God compels us to do for one another.

List of Funds to Donate to at CBE

ABLEMAN LITURGICAL ARTS FUND - Provides programs, contemporary worship or special musical events during Jewish Music Celebration.

PAUL AND LILLIAN CRAMER

MEMORIAL FUND - To purchase equipment, and to enrich school educational programs; to fund capital improvements and maintenance to Temple property.

FAMILY ASSISTANCE - For needy families.

HARRY AND ESTHER JACOBS

MEMORIAL FUND - For Adult Education and other special programs.

KEIL-HERRMANN MEMORIAL FUND - To support annual Scholar-in-Residence lecture series.

BERNARD KRESHTOOL MEMORIAL FUND - For Living Judaism programs such as Adult Jewish Education.

MILTON & HATTIE KUTZ SCHOLARSHIP FUND - To help defray expenses of our youth at Jewish camps, conclaves, Gratz High School, as well as school tuition.

EDITH LABOVSKY MEMORIAL FUND FOR STUDENT VISITS TO ISRAEL - Assistance for Youth and Family Education.

DR. LEO AND JULIA B. BLUMBERG SCHOLARSHIP FUND - For the same such purposes as the **KUTZ FUND**.

DIRECTOR OF LIFE LONG LEARNING DISCRETIONARY FUND - for the Religious School

LIBRARY FUND - To purchase books for the library.

MARGARET MAY MEMORIAL JEWISH FAMILY LIFE EDUCATION FUND - For Jewish educational programs.

MAZON - A Jewish Response to Hunger - fundraising to help solve the problem of hunger.

RAYMOND AND ESTHER MCDONALD MEMORIAL FUND - For activities relating to the State of Israel.

RABBI GRUMBACHER MUSIC FUND - To promote Jewish music with guest musicians and purchase music.

PRAYER BOOK FUND - funding for prayer book and bookplates call the office for pricing.

RABBIS'/CANTOR'DISCRETIONARY

FUNDS - To support Jewish causes, pursue acts of loving kindness, etc. **Rabbi and Cantor has a separate fund.**

ROSENTHAL JEWISH BOOK MONTH LECTURE FUND - To promote Jewish Literature and a biannual lecture.

SOCIAL ACTION FUND - To be used at the discretion of the Social Action Committee for local groups in need i.e. Sojourner's Place.

TEMPLE FUND - Undesignated contributions - for general congregation purposes.

VANCE BOLEN MEMORIAL FUND - To support Cadet Aides.

PEARL K. BREGMAN MEMORIAL FUND - fund available for use by the Caring Community Connection Committee.

ALICE SCHIFF MEMORIAL FUND - needs recommended by the Endowment Fund Committee and the Board of Trustees.

ADULT AND YOUTH CHOIR FUND - to promote and support the Adult and Youth Choir needs.

LEONA ELKINS SCHOLARSHIP FUND - awarding need based scholarship to students of CBE studying Hebrew or advanced Hebrew Studies at CBE, Gratz Hebrew High School or education programs in Israel.

RABBI HERBERT E. DROOZ & FLORENCE Z. DROOZ FUND - awards for scholastic excellence.

JUDGE STIFTEL AND YAFFEE FUND - needs recommended by the Endowment Fund Committee and the Board of Trustees.

THE HARRY & BLANCHE WOLPERT FUND - Family assistance fund .

STAT FAMILY GIFT FUND- Religious School camp and Israel trip scholarships

HAROLD & BEATRICE SNYDER CAMP HARLAM FUND- For Camp Harlam Scholarships.

MILTON & GAIL WAHL FUND - subsidize the publishing of The Orbit.

THE MEMBERSHIP ASSISTANCE FUND - to assist families or individual to pay the minimum dues.

CARING COMMUNITY COMMITTEE – To support the Beth Emeth community with care baskets, driving needs, food, cards, etc...

THE CONGREGATION BETH EMETH EDUCATION FUND – or supplies and programs for educational needs.

THE IRENE PACKLES MEMORIAL FUND FOR HIGH SCHOOL SENIORS- Contributions made to this fund will enable our high school students to make the transition to college more easily, with regard to their Jewish identity.

THE LARRY ISAKOFF MUSIC PERFORMANCE FUND- income from this fund will be used to pay for musical events such as cantorial and choir concerts, musical plays, etc.

YOUTH AND FAMILY PROGRAMMING – for youth and family programs.

THE HOLOCAUST GARDEN MAINTENANCE FUND – Maintenance of the Holocaust Garden

THE TORAH REPAIR FUND – To repair the Torah.

THE SCHOLARSHIP FUND - to provide funds for Religious School and Camp scholarships.

HOSPITALITY FUND – to help with noshes, onegs and other events

JOSEPH'S PANTRY (Beth Emeth Food Pantry) – to provide funds for the purchase of food in order to supplement in-kind donations

JOSEPH ZIMMERMAN MEMORIAL MUSIC FUND – to fund the hiring of a professional cellist during Kol Nidre.

Notice

All contributions sent to the temple should be made out to **"Congregation Beth Emeth."** If a special fund is desired, its name should be noted on the memo line or in an accompanying letter. Thank you for your cooperation.

A Note about Contributions

We welcome all contributions. If you wish the contribution to be listed in *The Orbit*, there is a minimum donation of \$10. This also covers the mailing of ONE acknowledgement card. Please be sure to include the address if the person(s) are not members of Congregation Beth Emeth. The card is mailed when the check is received.

It is important that, when you send in a donation, you write specifically how you want the donation listed. Please include a note with your check, printed clearly or typed, stating exactly how you want the contribution to read. For example: Mary and John Doe in memory of..., Mr. and Mrs. John Doe in honor of..., Mr. John and Mrs. Mary Doe in beloved memory of....

Please remember to write legibly and to list which funds you would like your donation to go to. Please make your check payable to Congregation Beth Emeth. Also, *The Orbit* usually runs three weeks ahead of schedule so it may take three weeks for your donation to appear in *The Orbit* from the date you mail it. Thank you for your cooperation.



Are you receiving j-VOICE Monthly?

THANKS TO A PARTNERSHIP BETWEEN JEWISH FEDERATION OF DELAWARE AND CONGREGATION BETH EMETH, congregants can enjoy a complimentary subscription to j-VOICE Monthly, an award-winning publication whose mission is to provide the Delaware and the Brandywine Valley community with a high-quality resource that educates, informs and inspires our community through a Jewish lens.

We Grow Stronger TOGETHER

Subscribe to j-VOICE Monthly at:

- ShalomDelaware.org/publications/jewish-voice-subscription
- call 302/427-2100 or
- email Danaw@ShalomDel.org

To receive our j-VOICE Weekly email, go to:

- ShalomDelaware.org/publications/j-voice-signup
- call 302/427-2100 or
- email Danaw@ShalomDel.org



Your Old Shoes Can Help Stamp Out Cancer Recycle Your Shoes



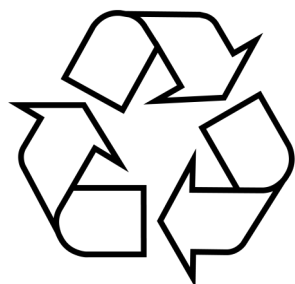
Did you know that your old, no longer used shoes can help to stamp out cancer? In cooperation with Community Recycling and Stand Up 2 Cancer (SU2C) **Congregating Beth Emeth** is taking part in a unique fundraising drive that we hope you will consider supporting. ***It will cost you no money!*** Participating is simple. **Congregating Beth Emeth** is collecting used shoes for reuse. This international shoe recycling program collects used shoes for distribution to poor regions all over the world (including areas in the USA). For each container filled with shoes a donation will be made to Stand Up 2 Cancer.

Our community will benefit as well. Not only will your recycled shoes help raise funds for SU2C, it will also keep more shoes out of our local landfills---and free up some space in your closet.

- **Drop off your used shoes in the shoe recycling container in the lobby of Congregating Beth Emeth** As each container is filled they are shipped to the Community Recycling organization for distribution to those in need. SU2C receives a small donation for each container that we fill.
- You get to free up some closet space while helping to reduce landfill waste
- Ask your family, friends, neighbors and co-workers to participate

Thank you very much for helping to stamp out cancer.

DROP OFF YOUR SHOES to the shoe recycling box in the lobby at Congregating Beth Emeth



for information about SU2C please visit

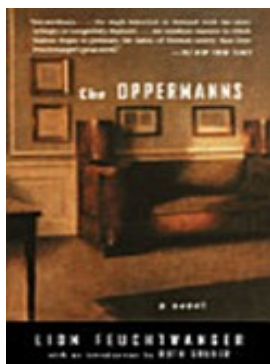


Sisterhood Books and Bagels

All discussions will begin at 9:30 AM. There is a cover charge of \$5 (or \$4 plus a nonperishable item for Joseph's Pantry) for those attending in person. RSVP to Heather Margolin h.m.margolin@gmail.com or 302-477-0737 at least one week prior to the event. We look forward to seeing you there!

February 11, 2024: **"The Oppermanns,"** by Lion Feuchtwanger First published in 1934 but fully imagining the future of Germany over the ensuing years, The Oppermanns tells the compelling story of a remarkable German Jewish family confronted by Hitler's rise to power.

April 14, 2024: **"Three Floors Up,"** by Eshkol Nevo (Author), Sondra Silverston (Translator) Set in an upper-middle-class Tel Aviv apartment building, this best-selling and warmly acclaimed Israeli novel examines the interconnected lives of its residents, whose turmoil, secrets, unreliable confessions, and problematic decisions reveal a society in the midst of an identity crisis.



Aluminum Can Tabs



Please continue saving soda, soup and other tabs. You may drop them off in the container located at the front door of the temple. The tabs will be sent to the local Ronald McDonald House. The tabs are sold and the money helps support the wonderful support that the houses provide for sick children and their families.

For the Newborn



Sisterhood has the honor of mailing a beautiful mezuzah to the newborn infants and their happy parents, who are members of our Congregation. Please help Sisterhood perform this "Labor of Love" by calling Rosalyn Lieberman at 302-475-1531 or you may e-mail her at momroz7@aol.com, with your good news.

Bar/Bat Mitzvah Parties

When planning your son's or daughter's Bar/Bat Mitzvah parties, please consider using our lovely facilities. Our social hall will accommodate a large group of family and friends. Caterers are welcome; rental is reasonable; there is room to dance, plenty of parking and a great staff to help make your party a success.





The Congregation Family gratefully acknowledges the following contributions:

"Nobody is ever impoverished through the giving of charity." ~ Maimonides

RABBI ROBINSON DISCRETIONARY FUND

In memory of Tila Pow
Sang Brizuela
from **Francisco J.
Brizuela**

In memory of my grand-
mother, Anna Kafitin.
from **Jeffrey D. Merritt**
In memory of Harry
Cutler from **The Cutler
Family**

CANTOR PELLEN'S DISCRETIONARY FUND

In memory of Harry
Shapiro from **Anita
Press**

In memory of Phyllis
Cobin from **Malcolm &
Susan Cobin**

ADULT AND YOUTH CHOIR FUND

In memory of John R.
Derrickson, Jr.
from **Linda and Bruce
Sachais**

CARING COMMUNITY COMMITTEE

In appreciation of
Congregation Beth
Emeth from **Beth
Schnitman-Malm**
Thank you for your kind-
ness from **Charlotte
Zaback**

HOLOCAUST MEMORIAL GARDEN MAINTENANCE

Honoring our sisters and
brothers who suffer from
any type of discrimination
around the world.
from **Francisco Brizuela**

JOSEPH ZIMMERMAN MEMORIAL MUSIC FUND

In memory of Shirley
Bernstein from **Linda
and Bruce Sachais**

JOSEPH'S PANTRY

In memory of Bob Malm
from **Alan & Rose Ebner**

In appreciation of
Congregation Beth
Emeth from **Beth
Schnitman-Malm**
In loving memory of
Marjorie Hurevitz
Wasserman from **Bill
& Pat Wasserman**
In memory of John R.
Derrickson, Jr.
from **Bob and Robin
Zink**

In loving memory of
Mom and Mama,
Inez Rosenbaum and
Aunt Hildy Abter
from **Brignac &
Heffernan Families**
In memory of Judith
Mischel and Ellis
Mischel from **Eilene
Cohen**

In memory of Joseph
Melamed and Gerald
Melamed
from **Rosalyn Selber
Lieberman & Family**

KEIL-HERRMANN MEMORIAL FUND

In memory of Dave
Drexler from **Susan
& Steve Herrmann**

MEMBERSHIP ASSISTANCE FUND

In memory of your
beloved father, John
Derrickson, Jr.
from **Suzy and Peter
Grumbacher**

RABBI GRUMBACHER DISCRETIONARY FUND

In memory of Rachel
Freschman from **Robin
Freschman**

TEMPLE FUND

In memory of Dr. Fred
S. Fink from **Anne
Jacobs**

In appreciation of
Rachel Allen
from **Debra Nicoll**
In memory of our dear
father, Donald Parsons,
Sr. from **Don & Ethel
Parsons**

In memory of Aaron
Goldstein's grandmoth-
er, Shirley Goldstein
from **Jeffrey D. Merritt**
Mazal Tov on Matthew
and Sara's wedding
from **Sue Paul**

**Mr. Jack Blumenfeld
& Ms. Karen Jacobs**

In memory of Philip
Block from **Naomi
Hershkowitz**

In memory of Dorothy
Akell from **Paul &
Linda Akell**

In memory of Meyer
Masors and Ruth Sklut
from **Rob & Jan
Goodman**

In memory of A. Roke
Lieberman
from **Rosalyn Selber
Lieberman &
Family**

In memory of Dave
Balick from **Ruth Balick**
In memory of my brother
Arthur Fischer
from **Sara Hockstein**

In memory of Edythe
Margolin from **Steven &
Heather Margolin**
In honor of Luke
Werkheiser from **Rachel
Lowy Werkheiser**

TORAH REPAIR FUND

In loving memory of our
father and poppie, Kurt
Rosenbaum
from **Brignac &
Heffernan Families**



Visit us at www.bethemethde.org or call at 302.764.2393

Yair D. Robinson, Rabbi • Peter H. Grumbacher, Rabbi Emeritus
Elizabeth F. Pellen, Cantor • Rachel Allen, President
Jonathan I. Yulish, Executive Director
Eliana M. Hall, Director of Life Long Learning

Address or phone number change, call or email: lwyzga@bethemethde.org

Funded by The Milton and Gail Wahl Fund



CONGREGATION BETH EMETH

300 W. Lea Blvd.
Wilmington, DE 19802



HERITAGE SHABBAT



FRIDAY, FEBRUARY 9 AT 7 PM

Join the Adult Choir and Youth Choir as
Congregation Beth Emeth celebrates its rich Heritage.