



Light of God's House

CONGREGATION BETH EMETH

Orbit

300 West Lea Blvd, Wilmington, DE 19802 • 302-764-2393 • bethemethde.org

VOLUME XLVI • NO. 8 • 10 NISAN - 9 IYAR 5783 • APRIL 2023



A GOOD QUESTION

YAIR D. ROBINSON
(HE/HIM)

Are you ready for summer yet? I know I am! I miss the sun, the warmth, and the chance to be at camp.

Yep, I still go to camp! Specifically, to URJ Camp Harlam, our reform movement camp in the Poconos, where I serve on faculty. There is nothing like being at camp with the kids, the other faculty (rabbis and cantors and educators from around the region), and the staff, experiencing Judaism in an authentic way. Does that mean that our experience in Wilmington is inauthentic? Hardly, *but* when I go as faculty to Harlam, I see Jewish children and teenagers—including many of our own kids—celebrate Shabbat and celebrate each other, use Hebrew expressions like *cheder ochel* (dining hall) and *nikkayon* (cleanup) and recite prayers such as *hamotzi* and *birkat hamazon* as casually as they would use English. Certainly theirs is a normal camp experience, filled with hiking and rock climbing, boating and swimming, arts and crafts and music and exploring the wonders of technology, but all of this is enhanced with song sessions after meals, spending time with young Israeli men and women and talking with them about *ha'aretz*—the Land of Israel, and gathering for Shabbat, dressed all in white, on a hill overlooking the green mountains of the

SHABBAT SHALOM

Friday, April 7, Kabbalat Shabbat Service, 7:00 PM

Or join us via: <https://www.youtube.com/channel/UCDGcjXfeW866IGiUCWEbkuw>

Rabbi Robinson will speak.

The Youth Choir will perform

Birthday Blessings for the month of April

Saturday, April 8, Torah Study and Service

Combination, 9:30 AM

"Second Day of Pesach,"

Friday, April 14, Shabbat Service, 7:00 PM,

Marriage Reconciliation and the Choir will perform

We welcome St. Andrew's School

Elizabeth Rich will bless the Shabbat Candles

Or join us via: <https://www.youtube.com/channel/UCDGcjXfeW866IGiUCWEbkuw>

UCDGcjXfeW866IGiUCWEbkuw

Saturday, April 15, Torah Study, 9:30 AM,

Morning Service, 11:00 AM

The Bar Mitzvah of Tobias Ball, son of Elizabeth Rich and Kristian Ball, will be celebrated.

Join by Zoom: <https://zoom.us/j/531825441>.

"Shemini," Leviticus 10:1-11; II Samuel 6:16-19

Friday, April 21, Shabbat Service, 7:00 PM

Or join us via: <https://www.youtube.com/channel/UCDGcjXfeW866IGiUCWEbkuw>

UCDGcjXfeW866IGiUCWEbkuw

Rabbi Robinson will speak

Saturday, April 22, Torah Study and Service

Combination, 9:30 AM

Join by Zoom: <https://zoom.us/j/531825441>.

"Tazria-Metzora," Leviticus 12:1-15:33,

Numbers 28:9-15; Isaiah 66:1-24

Friday, April 28, Shabbat Service, 7:00 PM

Or join us via: <https://www.youtube.com/channel/UCDGcjXfeW866IGiUCWEbkuw>,

UCDGcjXfeW866IGiUCWEbkuw,

Rabbi Grumbacher will speak: *"Look at the Children in our Garden"* (before you enter our sanctuary)

Elliana Levin will bless the Shabbat Candles

Saturday, April 29, Torah Study 9:30 AM,

Morning Service, 11:00 AM

The Bat Mitzvah of Elliana Levin, daughter of Melanie Ross Levin and Seth Levin will be celebrated.

Join by Zoom: <https://zoom.us/j/531825441>.

"Acharei Mot/Kedoshim," Leviticus 16:20-28; amos 9:13-15

Poconos, celebrating under a canopy of leafy trees and blue sky.

Their experience at camp—their *Jewish* experience—delivers a kind of authenticity one cannot capture easily at home or in synagogue or even in a camp ‘full of Jews.’ Their experience is unique and special, and one I would encourage you to consider for your own children this year. Talk to anyone who’s sent their kids to Harlam, and they’ll wax rhapsodic about what a positive experience they had; how fun it was, and the friends they made. And you might see that their connection to Judaism is that much deeper. I’m proud to say that, once again this year, I will be there as faculty, second session. This adds another dimension for the kids; a chance for them to get to know me (and I get to know all of them!) in a different, more relaxed setting. And I have watched more than one student go from child camper to young staffer to become bright, mature, engaged adults, whose best friends are still the ones they made at Harlam (or 6 Points Sports, or 6 Points Science & Technology, or 6 Points Creative Arts Academy in West Chester PA!). It’s always a joy to see what camp makes of people.

If you are interested in sending your children to either Camp Harlam or one of the 6 Points camps this coming summer, please see me, or Cantor Pellen (who’s going back to 6 Points Creative Arts), or Moret Eliana, or talk to one of the many parents here at Beth Emeth who have sent their kids year after year to that special place. ***There is ample scholarship money available for your child to attend a Jewish Camp.*** Your children deserve to have not only a fun summer, not only an authentic camp experience, but an authentic Jewish experience at camp.



Marriage Re-consecration Service



Ah, the cold winter nights! Doesn't it make you want to rekindle the warmth of romance? And what better way is there than to join other couples in re-consecrating your marriage vows in our sanctuary at Beth Emeth on Friday, April 14, during the 7:00 PM Shabbat evening service. If your wedding anniversary in calendar year 2023 is a multiple of 5-years (e.g. 5, 10, 15, 20 years, etc.) then you're eligible to participate! The service is both beautiful and meaningful and a wonderful opportunity for families to share their love. For more information or to sign up, contact Esther Timmeney at 302-478-0363 or e-mail esthertimmeney@gmail.com.

Orbit Submission

All articles for the May issue of The Orbit are due on Wednesday, April 5, 2022 at 9:00 AM. Please email your articles to lwyzga@bethemethde.org. Thank you.

Quote of the Month

"Think of all the beauty still left around you and be happy."
Anne Frank

Need a ride? Or help around the house?
Brandywine Village Network is here for you!



Helping you live just where you want . . . at home.

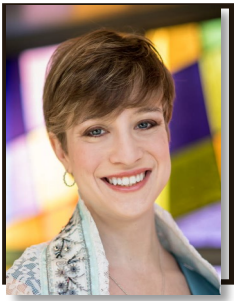
**Care Management
Volunteer Support
Social & Wellness Activities**

*An aging in place initiative of
Jewish Family Services of Delaware*

www.brandywinevillagenetwork.org

302.478.9411





ELIZABETH F. PELLEN
(SHE/HER)

During a discussion about synagogue involvement with classmates and colleagues, we came to an interesting machlochet, or disagreement. We had been discussing the usual ebbs and flows of synagogue involvement. Naturally we all agreed that the highest numbers in synagogue attendance occur during the high holidays. After that we discussed the next highest and came to an almost even split that took us by surprise. Speaking simultaneously, we all said, “obviously the spring” or “obviously the winter.”

Upon reflection, it is easy to figure out the misunderstanding. Those who referenced the winter were referring to Channukah services and activities. Those, like me, who referenced the spring were referring of course, to Passover. It is widely known that beyond all the holidays, Passover seems to be the one that Jews, no matter how estranged from prayer or other aspects of the religion, hold on to. There are many speculations as to why this is – the holiday’s strong connection to our shared history, its intense ritualism, and the high involvement of spending time with one’s family.

These last two points are, interestingly enough, the reason for the divide in opinion among my classmates – the seder and the family time are both the reasons for increased and decreased synagogue attendance. This year, we are very excited to bring the community Seder back to CBE.

A community seder is a wonderful opportunity to combine home and synagogue observance of the holiday. Though if I am honest, the first time I experienced a community Seder I found it a bit strange. This holiday has always been for me, an opportunity to spend very precious time with my family – members of which travelled in from great distances to be together. Synagogue, ironically, was never part of the equation for celebrating this holiday. I have always known that becoming clergy would impact the way I am able to celebrate the holidays, but as I

had only ever experienced Passover in the home, I had never expected it to change that particular aspect of my practice.

Recently a colleague in a women’s clergy Facebook group that I am a member of, expanded on this discussion. She posted looking for support; at her new job she would be leading their community seder which meant for the first time in her life she would be unable to see her family on Passover. This post sparked a large comment thread with colleagues commiserating and offering suggestions for finding the balance between personal spiritual needs and serving your congregations. There was one comment that stood out to me in particular: one of the other clergy mentioned that while this may not be the family she is used to spending Passover with, while it will never replace her family, that the members of her congregation who attend the community seder do so because their congregation is their family and it is her family now too.

The community seder is a beautiful blend of personal and communal family. Members of the congregation bring their family members to join together in one large seder. It’s the perfect bridge between both of these Passover experiences. I am greatly looking forward to leading the Second Night Seder with Rabbi Robinson this year and celebrating Pesach with my CBE Family! I wish you all a Zissen Pesach.

See you at the Seder!



**BETH EMETH
MEMORIAL PARK**

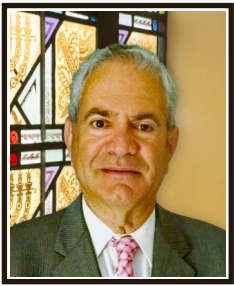
FAULKLAND RD.

OFF DUPONT RD.

FOR INFORMATION

CALL

302-764-2393



FOCUS EMERITUS

RABBI PETER H. GRUMBACHER

My Fourth Interfaith Tour of Israel: Part One

The deadline for the article is coming up. It's due before our return from our fourth interfaith tour to Israel and Jordan, so this "travelogue" only consists of days one through four. I'm not even discussing what we did on those days, rather a general impression.

Our "pilgrims" number thirty-six in all. Pastor David and Gigi Mueller, Suzy and I, along with a virtually equal number of Jews and Christians, are having a wonderful experience, truly enjoying the glorious weather along with hundreds of other tourists (mainly foreign but there are also American groups). We've been in Israel in the winter before. While we never had terrible weather this so far has been incomparable...sort of like what we had in Wilmington over the past couple of weeks before we left.

What makes a great tour is a tour guide who engages with his/her group and teaches something in addition to just showing us the sites. Yaron, our guide five years ago and now, is such a guide. I've had guides who were good (one, the first guide years ago, wasn't), but all of us are impressed with his knowledge and the way he presents to the group, the vast majority of whom have never been in Israel before. He makes the land and its history come alive; he makes you feel that you are involved in the events of the past, a sort of "You Are There" presentation, a program which mesmerized viewers of early television.

An "extra bonus" of the trips Pastor Mueller and I arrange are the guest speakers who address the group after dinner a few times during our journey. My good friend, Yehuda (then Roger) Geller, spoke. He began his studies at Hebrew Union College with me, then came to Israel as did we for our third year studying at the Jerusalem campus. We came back to the States to complete my studies; Yehuda and his wife Debbie, remained, and today a half-century later, they boast of 41 grandchildren and great-grandchildren. As an Orthodox Jew, he truly fulfilled the commandment *p'ru u'r'vu*,

"be fruitful and multiply." In so many other ways they have added to the strength and security of the Jewish State. There will be a few other speakers, including an Arab Israeli who guided us through the West Bank in November.

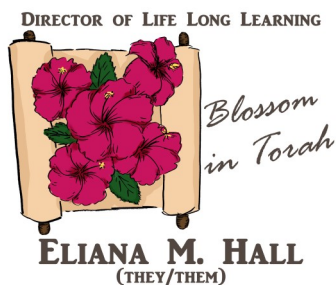
This first part of the tour has taken us through the Galilee so the places we visited are connected to the life and times of the Christian savior. Tomorrow (as I write this) we head to Jerusalem but first to Qumran, the place where the Dead Sea Scrolls were found; and then a dip into the Dead Sea (and the way the Dead Sea is disappearing, it'll really be "dead" before you know it).

But it's Jerusalem I really look forward to. We were in Israel for the Hadassah convention last November and I remembered (as I always do after time spent there) why Jerusalem is my favorite city. To go back just a few months later as we have done is a special treat. I know the pilgrims will be overwhelmed by what they see and feel; everyone regardless of religion is taken aback by the beauty of the city, its spiritual aura, and its unprecedented history for Jews, Christians and Moslems.

It was here in Jerusalem towards the end of the convention that Suzy and I tested positive for Covid; and it's here in Jerusalem in the middle of our tour that I once again tested positive for Covid. Fortunately, it's less symptomatic than that time which, Baruch HaShem, was less symptomatic than the first. It's keeping me from joining the others at Shabbat morning services at Har El congregation (one more bit of irony...the minister makes it but not the rabbi). I have a feeling I'll test negative tomorrow. I better.

Ok, part two is May's *Focus Emeritus* column. With this incredible gap between one issue of the *Orbit* and the next, you'll know the saga before you even read it. After all, we get back just at the deadline of the April issue. Back to my musings as I wait for the group to return to the hotel.





לך כְּנוֹס אֶת-כָּל-הַיְּהוּדִים

These are my favorite five words in the entire Megillah. They translate to "Go and assemble all the Jews." It is half of a sentence, really. In the rest of her declaration, Esther sends word to Mordechai that all the Jews in Shushan, herself included, are to fast for several days as she prepares to speak with King Achashverosh. The first part of that sentence, though, is where Esther lays out the integral part of her solution to the problem that the Jews are facing, the problem of Haman, the problem of anti-semitism, of being Jewish in a world that doesn't always welcome Jews. *Get all the Jews*, she tells us. *We are in this together.*

With these words, Esther turns the usual Jewish Holiday narrative on its head. We aren't waiting for a miracle or a revelation as we do during Chanukah or Pesach; we are getting ready to handle this ourselves. It's a remarkable departure from our usual script. The Purim story is more than just a story in which God is not mentioned. This is a story in which we ourselves are identified as the solution to our own problem.

כִּן וּבִכֵּן אָבּוּא אֶל-הַמֶּלֶךְ אֲשֶׁר לֹא-כָדַת וְכֹאֲשֶׁר אֲבָדְתִּי אֲבָדְתִּי

'Then I shall go to the king, though it is contrary to the law, and if I am to perish, I shall perish!' Esther declares. And what is needed other than *all the Jews*? *Chutzpah*! At its core, *chutzpah* is pushing boundaries, sometimes the limits of those around us, but sometimes our own boundaries. The *chutzpah* Esther demonstrated was of the latter variety.

In essence, then, two things saved the Jews of Persia those many generations ago: *kehillah* - community - and *chutzpah* - boldness. By the time you read this, Purim will be over, and the odds are that you will already be preparing for Passover, but the gifts that Purim gives us will still be fresh in our memories. Purim gives us joy and delicious cookies, to be sure, but Purim also gives us permission to push boundaries and rely on ourselves in a way that is unique in

our collective narrative. We can use those gifts all year long to encourage our communities to be better, to change the world into a more just one, and to push ourselves to do things we never imagined we could.

It's Back! Wednesday Study and Conversation

The Ethics of Our Fathers give us many of the sayings that Jews regularly point to, like "If I am only for myself, then what am I?" from Rabbi Hillel, and "You are not required to complete the task, but neither are you free to desert from it," from Rabbi Tarfon.

What else can we learn from the wisdom of Pirke Avot? As we count the Omer from Passover to Shavuot, clergy and Moret Hall will lead us in discussion. Come for one, come for all, in-person and on Zoom. We start Wednesday, April 12 and every Wednesday through May 17, from 6:00 to 6:45 PM. Watch for details in the weekly email.

Beth Emeth Community Seder is Back

Please join Congregation Beth Emeth for our **Second Night Community Seder** on Thursday, April 6, 2023, at 5:30 PM. The seder will be led by Beth Emeth clergy and is open to members and the wider Jewish community.

Make your reservations now! Dinner is **\$18.00** per person for CBE members; \$25 per person for non-members. Children 12 and under are \$10.00; Children under 5 are FREE. The seder includes a traditional Seder menu with matzo ball soup, gefilte fish, main course, dessert and beverages. Vegan and vegetarian options are available by prearrangement. Please indicate at the time of registration.

RSVP online at <https://congregationbethemeth.shulcloud.com/event/community-seder1.html#> or by calling the office at 302-764-2393. You may also mail a check to Congregation Beth Emeth, 300 W. Lea Blvd., Wilmington, DE, 19802. Please make your reservation and payment by March 30, 2023.





PRESIDENT'S MESSAGE



DAVID NEKOUKAR
(HE/HIM)

Love, Family, and Food

As we transition into the month of April, we also transition to the month of Nisan and the Passover holiday. My family is split on their opinions about this holiday. Some of us love it (me included), and some of us start longing for *chametz* soon after the first seder is complete. My love of Passover stems from the Jewish traditions and family customs that define it (well, those things plus the matzah ball soup)! I enjoy that my extended family makes the seder a priority so we can be together for this holiday. In my household growing up, it became commonplace for my parents to host a seder that included friends or distant relatives I'd never met before, simply because those folks would've otherwise been unable to attend a seder. This is what we did as a Jewish family, and this is what we do as a community here at Congregation Beth Emeth.

At CBE, we have our own Passover traditions, which include learning, praying and eating (of course). The learning begins with the lessons taught in the religious school, which typically include hands-on cooking and (arguably more importantly to the children) tasting.

Did you know we also have an exciting and thriving adult education program? Under the guidance of our Director of Lifelong Learning, Eliana Hall, and our board member and adult education chair, Susan Detwiler, CBE has been hosting a series of adult learning opportunities. One of these opportunities for adult education is Project Zug. In March, the group lesson was titled, "Storytelling on Passover and Beyond." Storytelling is intertwined with every Jewish holiday, but Passover is one of the main holidays where we make a concerted effort to ensure the story is told. The course investigated the role of storytelling in the Seder and beyond, for example: What are the stories that we tell, and why do we tell them? How can we get more out of them? And how can telling a familiar story in a new way change who we are? If you were una-

ble to attend these lectures but they sound intriguing, we have recordings that can be shared. And if you find you are now interested in joining the Project Zug group study, you're in luck! The courses are continuing, and you can register for them on our website (BethEmethDE.org).

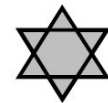
Another tradition at CBE is back this year – our Community Seder! This tradition gives us a place to come to for a second seder, and it has been well-attended for many years. This year's Community Seder will be held on April 6, 2023. Please consider joining us for this social and spiritual event. Registration is also available on our website. Non-members are also welcomed.

We hope to see you at one of our many upcoming learning opportunities!

Mazel Tov!

...to Rabbi Grumbacher on the publication of his article *Fifty Years in One Congregation: A Memoir of Sorts* in Reform Jewish Quarterly.

...to Sheila and Phil Weinberg upon their grandson Alec Bachman, son of Carrie Bachman, for being accepted to attend a year at the London School of Economics.



Schoenberg Memorial Chapel

*Dedicated to serving our community
with Compassion, Competence and Dignity*

519 Philadelphia Pike

302-762-0334

April 2023

Sunday	Monday	Tuesday	Wednesday	Thursday	Friday	Saturday
						1 (10 Nisan) Tzav 9:30am Torah Study 11:00am Bat Mitzvah of Calista Walterscheid 11:00am Shabbat Service
2 (11 Nisan) 9:00am Religious School 10:30am Confirmation Service Prep 11:00am Caring Committee Meeting	3 (12 Nisan)	4 (13 Nisan) 12:00pm Stocking for Joseph's Pantry 3:00pm Joseph's Pantry Open	5 (14 Nisan) Erev Passover	6 (15 Nisan) Passover Business Office Closed 11:00am Passover Service 5:30pm Community Seder	7 (16 Nisan) Chol Hamoed Passover Youth Choir Performs 7:00pm Kabbalat Shabbat Service 8:00pm Oneg	8 (17 Nisan) Chol Hamoed Passover 9:30am Torah Study & Service Combination
9 (18 Nisan) Chol Hamoed Passover	10 (19 Nisan) Chol Hamoed Passover	11 (20 Nisan) Chol Hamoed Passover 12:00pm Stocking for Joseph's Pantry 3:00pm Joseph's Pantry Open 7:00pm Board Meeting	12 (21 Nisan) Passover Yizkor Business Office Closed 11:00am Yizkor Service 7:00pm Choir Rehearsal	13 (22 Nisan) 7:00pm Marriage Reconciliation Rehearsal	14 (23 Nisan) Marriage Reconciliation Choir Performs St. Andrew's School Visit 7:00pm Shabbat Service 8:00pm Oneg	15 (24 Nisan) Sh'mini 9:30am Torah Study & Service Combination 11:00am Bar Mitzvah of Tobias Ball 11:00am Shabbat Service
16 (25 Nisan)	17 (26 Nisan)	18 (27 Nisan) Yom HaShoah 12:00pm Stocking for Joseph's Pantry 3:00pm Joseph's Pantry Open	19 (28 Nisan) 4:45pm Hebrew School	20 (29 Nisan)	21 (30 Nisan) 7:00pm Shabbat Service 8:00pm Oneg	22 (1 Iyar) Tazria-M'tzora 9:00am Shabbat Torah Study & Schmooze
23 (2 Iyar) 9:00am Religious School 9:30am the First State Abortion Fund Parlor Meeting 10:30am Confirmation	24 (3 Iyar)	25 (4 Iyar) Yom HaZikaron 12:00pm Stocking for Joseph's Pantry 3:00pm Joseph's Pantry Open	26 (5 Iyar) Yom HaAtzmaut 4:45pm Hebrew School 7:00pm Choir Rehearsal	27 (6 Iyar) 9:00am Endowment Committee Meeting 6:30pm Sisterhood Bingo Donor Event	28 (7 Iyar) 7:00pm Shabbat Service 8:00pm Oneg	29 (8 Iyar) Acharai Mot-K'doshim 9:30am Torah Study 11:00am Bat Mitzvah of Eliana Levin 11:00am Shabbat Service
30 (9 Iyar) 9:00am Books & Bagels 9:00am Religious School 10:30am Confirmation						

In memory of the departed whom we now remember. We share in the recent bereavement suffered by members of our temple family and extend our sincere condolences to:

Ira Tartack on the death of his wife, Sarah and Jason Kittinger on the death of Sarah's mother and to Miriam Sandler on the death of her mother, Mara Tartack.

Kendra Moritz Rosner and Andrew Rosner on the death of Kendra's aunt, Judith Rae Moritz.



Sisterhood Happenings

THE MOVIES AT NOON (Formally "Lunch and Learn with Sue")

Once a month on Wednesdays from 12:00 - 1:30 PM at Beth Emeth. Spring is right around the corner so that means Sue Paul will be back in town to restart our favorite movie discussions!! Here is our upcoming list of movies to discuss and the dates on which we'll meet!! We hope you can join us for some or all of them!!

Tuesday, April 25 - **The Fablemans** (due to a conflict our April date will be a Tuesday instead of a Wednesday) <https://youtu.be/9wAKUa487aw>.

Wednesday, May 24 - **The Lemon Tree** (Amazon Prime) [Watch Lemon Tree | Prime Video \(amazon.com\)](#)

Wednesday, June 28 - **The Graduate** (Amazon Prime) - [Watch The Graduate | Prime Video \(amazon.com\)](#)

Watch the movies on your own before we meet and we'll discuss the films together. Sue Paul will moderate our discussion. Bring a sandwich for yourself to eat and we will provide drinks and dessert!! We'll meet in the Beth Emeth library. RSVP for these events to Missy Rosenthal at mmrosenthal@comcast.net.



MAHJONGG MONDAYS - February 13, March 13 & April 17 - 11:00 AM-1:00 PM

Come join us to play the fun and exciting game of Mahjongg! Beginners are welcome! We'll try to break up into groups of 4 with beginners grouped together and more experienced players grouped together. Please RSVP to Missy Rosenthal at mmrosenthal@comcast.net so we know how many people to expect, how many sets we will need & if you consider yourself a beginner or experienced player. If you have a set and mahjongg card(s), please bring them!! We'll provide snacks and drinks!!

SAVE THE DATES



Thursday, April 27 - 6:30 PM - 8:30 PM

Sisterhood BINGO Donor Event

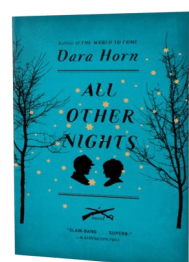
2023! Invitations & details coming soon!! Fabulous prizes! Delicious food! Fun evening with friends! We hope you can join us!!

Friday, May 12 - **Sisterhood Shabbat**

Sisterhood Books & Bagels 2022-23

All discussions will begin at 9:30 AM (please note the change from our traditional time). There is a cover charge of \$5 (or \$4 plus a nonperishable item for Joseph's Pantry) for those attending in person. RSVP to Heather at h.m.margolin@gmail.com or 302-477-0737 at least one week prior to the event, for details about location (and/or Zoom link if applicable). We look forward to seeing you there!

April 30, 2023 "All Other Nights" by Dara Horn.



Judaica Shopping!



Are you going to be ready for Passover?

The Beth Emeth Sisterhood Gift Shop has many of your Passover needs such as Seder

plates, matzoh holders, covers, afikomen bags and more.

Come check us out! We're open Wednesday afternoons and Sunday mornings or by appointment.

The Caring Committee



The Caring Committee provides opportunities to help members of our CBE community in a variety of ways. They include making soup and meals, writing cards and

making calls, consoling the bereaved, distributing holiday gifts and visiting members of our community in facilities and their homes, although these visits have been suspended during the pandemic. New committee members are always welcome. Contact Judith Insinga by email her jjischnitman@yahoo.com or 302-764-4093 for more information about the Caring Committee.

Change of Address Reminder

Don't forget to contact the temple office at 302-764-2393 to change your address or you may now change your address online. Simply go to our website at www.bethemethde.org and log in as a member. You can manage your account details online. If you have not yet logged in and need a password, contact the office and we will send you a link.

You can also update your telephone number or email address, the same way. Most of the temple correspondence is mailed third class. The post office does not forward any third class mail.

Israel Trip



Join Congregation Beth Emeth's Journey to Connect: Israel celebrating 75 years led by Rabbi Yair Robinson from June 15 to June 25, 2023. Traveling together in Israel is

an opportunity to connect with the people of Israel, with the land itself, and with each other. We'll grow through our shared experiences, from the fun and adventurous, to the historical and spiritual, as we explore our homeland together and mark modern Israel's 75th year! Flyers are available at the synagogue. Learn more about this amazing trip by going to secure.ayelet.com/RobinsonIsrael2023.aspx.

Payments Made with Stock

Beth Emeth is now working with LPL Financial to trade securities. Effective immediately, the contact information, DTC and account numbers have changed, although the process is largely unchanged.

Congregants who wish to make a donation or pay their commitment with stock, please follow these instructions:

1. Direct your broker to transfer stock to Beth Emeth's broker, **LPL Financial at 800-724-2120**. They should tell LPL that the stock is to be credited to the account titled **Congregation Beth Emeth (DTC# 0075; Account number: 6772-1990)**.

2. Once the stock is transferred, please notify Jon, Lisa, or Lori in the business office, that you have transferred stock, so that your account may be credited. They will need the following information:

- Your name,
- Number of shares that you sold,
- Name of the stock,

What the stock is paying for (i.e., commitment).

Please call the business office at 302-764-2393 If you have any questions.

List of Funds to Donate to at CBE

ABLEMAN LITURGICAL ARTS FUND - Provides programs, contemporary worship or special musical events during Jewish Music Celebration.

PAUL AND LILLIAN CRAMER

MEMORIAL FUND - To purchase equipment, and to enrich school educational programs; to fund capital improvements and maintenance to Temple property.

FAMILY ASSISTANCE - For needy families.

HARRY AND ESTHER JACOBS

MEMORIAL FUND - For Adult Education and other special programs.

KEIL-HERRMANN MEMORIAL FUND - To support annual Scholar-in-Residence lecture series.

BERNARD KRESHTOOL MEMORIAL FUND - For Living Judaism programs such as Adult Jewish Education.

MILTON & HATTIE KUTZ SCHOLARSHIP FUND - To help defray expenses of our youth at Jewish camps, conclaves, Gratz High School, as well as school tuition.

EDITH LABOVSKY MEMORIAL FUND FOR STUDENT VISITS TO ISRAEL - Assistance for Youth and Family Education.

DR. LEO AND JULIA B. BLUMBERG SCHOLARSHIP FUND - For the same such purposes as the **KUTZ FUND**.

DIRECTOR OF LIFE LONG LEARNING DISCRETIONARY FUND - for the Religious School

LIBRARY FUND - To purchase books for the library.

MARGARET MAY MEMORIAL JEWISH FAMILY LIFE EDUCATION FUND - For Jewish educational programs.

MAZON - A Jewish Response to Hunger - fundraising to help solve the problem of hunger.

RAYMOND AND ESTHER MCDONALD MEMORIAL FUND - For activities relating to the State of Israel.

RABBI GRUMBACHER MUSIC FUND - To promote Jewish music with guest musicians and purchase music.

PRAYER BOOK FUND - funding for prayer book and bookplates call the office for pricing.

RABBIS'/CANTOR'DISCRETIONARY

FUNDS - To support Jewish causes, pursue acts of loving kindness, etc. **Rabbi and Cantor has a separate fund.**

ROSENTHAL JEWISH BOOK MONTH LECTURE FUND - To promote Jewish Literature and a biannual lecture.

SOCIAL ACTION FUND - To be used at the discretion of the Social Action Committee for local groups in need i.e. Sojourner's Place.

TEMPLE FUND - Undesignated contributions - for general congregation purposes.

VANCE BOLEN MEMORIAL FUND - To support Cadet Aides.

PEARL K. BREGMAN MEMORIAL FUND - fund available for use by the Caring Community Connection Committee.

ALICE SCHIFF MEMORIAL FUND - needs recommended by the Endowment Fund Committee and the Board of Trustees.

ADULT AND YOUTH CHOIR FUND - to promote and support the Adult and Youth Choir needs.

LEONA ELKINS SCHOLARSHIP FUND - awarding need based scholarship to students of CBE studying Hebrew or advanced Hebrew Studies at CBE, Gratz Hebrew High School or education programs in Israel.

RABBI HERBERT E. DROOZ & FLORENCE Z. DROOZ FUND - awards for scholastic excellence.

JUDGE STIFTEL AND YAFFEE FUND - needs recommended by the Endowment Fund Committee and the Board of Trustees.

THE HARRY & BLANCHE WOLPERT FUND - Family assistance fund .

STAT FAMILY GIFT FUND- Religious School camp and Israel trip scholarships

HAROLD & BEATRICE SNYDER CAMP HARLAM FUND- For Camp Harlam Scholarships.

MILTON & GAIL WAHL FUND - subsidize the publishing of The Orbit.

THE MEMBERSHIP ASSISTANCE FUND - to assist families or individual to pay the minimum dues.

CARING COMMUNITY COMMITTEE – To support the Beth Emeth community with care baskets, driving needs, food, cards, etc...

THE CONGREGATION BETH EMETH EDUCATION FUND – or supplies and programs for educational needs.

THE IRENE PACKLES MEMORIAL FUND FOR HIGH SCHOOL SENIORS- Contributions made to this fund will enable our high school students to make the transition to college more easily, with regard to their Jewish identity.

THE LARRY ISAKOFF MUSIC PERFORMANCE FUND- income from this fund will be used to pay for musical events such as cantorial and choir concerts, musical plays, etc.

YOUTH AND FAMILY PROGRAMMING – for youth and family programs.

THE HOLOCAUST GARDEN MAINTENANCE FUND – Maintenance of the Holocaust Garden

THE TORAH REPAIR FUND – To repair the Torah.

THE SCHOLARSHIP FUND - to provide funds for Religious School and Camp scholarships.

HOSPITALITY FUND – to help with noshes, onegs and other events

JOSEPH'S PANTRY (Beth Emeth Food Pantry) – to provide funds for the purchase of food in order to supplement in-kind donations

JOSEPH ZIMMERMAN MEMORIAL MUSIC FUND – to fund the hiring of a professional cellist during Kol Nidre.

Notice

All contributions sent to the temple should be made out to **"Congregation Beth Emeth."** If a special fund is desired, its name should be noted on the memo line or in an accompanying letter. Thank you for your cooperation.

A Note about Contributions

We welcome all contributions. If you wish the contribution to be listed in *The Orbit*, there is a minimum donation of \$10. This also covers the mailing of ONE acknowledgement card. Please be sure to include the address if the person(s) are not members of Congregation Beth Emeth. The card is mailed when the check is received.

It is important that, when you send in a donation, you write specifically how you want the donation listed. Please include a note with your check, printed clearly or typed, stating exactly how you want the contribution to read. For example: Mary and John Doe in memory of..., Mr. and Mrs. John Doe in honor of..., Mr. John and Mrs. Mary Doe in beloved memory of....

Please remember to write legibly and to list which funds you would like your donation to go to. Please make your check payable to Congregation Beth Emeth. Also, *The Orbit* usually runs three weeks ahead of schedule so it may take three weeks for your donation to appear in *The Orbit* from the date you mail it. Thank you for your cooperation.



Are you receiving j-VOICE Monthly?

THANKS TO A PARTNERSHIP BETWEEN JEWISH FEDERATION OF DELAWARE AND CONGREGATION BETH EMETH, congregants can enjoy a complimentary subscription to j-VOICE Monthly, an award-winning publication whose mission is to provide the Delaware and the Brandywine Valley community with a high-quality resource that educates, informs and inspires our community through a Jewish lens.

We Grow Stronger TOGETHER

Subscribe to j-VOICE Monthly at:

- ShalomDelaware.org/publications/jewish-voice-subscription
- call 302/427-2100 or
- email Danaw@ShalomDel.org

To receive our j-VOICE Weekly email, go to:

- ShalomDelaware.org/publications/j-voice-signup
- call 302/427-2100 or
- email Danaw@ShalomDel.org



Your Old Shoes Can Help Stamp Out Cancer Recycle Your Shoes



Did you know that your old, no longer used shoes can help to stamp out cancer? In cooperation with Community Recycling and Stand Up 2 Cancer (SU2C) **Congregating Beth Emeth** is taking part in a unique fundraising drive that we hope you will consider supporting. ***It will cost you no money!*** Participating is simple. **Congregating Beth Emeth** is collecting used shoes for reuse. This international shoe recycling program collects used shoes for distribution to poor regions all over the world (including areas in the USA). For each container filled with shoes a donation will be made to Stand Up 2 Cancer.

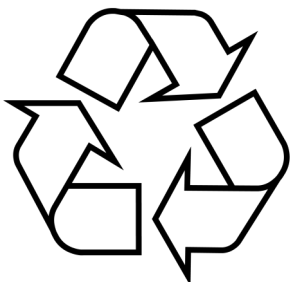
Our community will benefit as well. Not only will your recycled shoes help raise funds for SU2C, it will also keep more shoes out of our local landfills---and free up some space in your closet.

- **Drop off your used shoes in the shoe recycling container in the lobby of Congregating Beth Emeth** As each container is filled they are shipped to the Community Recycling organization for distribution to those in need. SU2C receives a small donation for each container that we fill.
- You get to free up some closet space while helping to reduce landfill waste
- Ask your family, friends, neighbors and co-workers to participate

Thank you very much for helping to stamp out cancer.

DROP OFF YOUR SHOES to the shoe recycling box in the lobby at Congregating Beth Emeth

for information about SU2C please visit www.SU2C.org



Business Office

The business office will be closed on April 6 and April 12 in observance of Passover.

CHOCOLATE-MANGO GANACHE TRUFFLES CHEF LAURA FRANKEL

INGREDIENTS

- 14 ounces bittersweet chocolate (at least 70% cacao)
- 1 cup mango puree (I prefer Ceres brand)
- 2 egg yolks
- 1 vanilla bean, scraped

PREPARATION

In a small saucepan over low heat, melt the chocolate with the mango puree, being careful not to burn the chocolate. Cool slightly.

In the bowl of a stand mixer fitted with a whisk attachment, whisk the egg yolks and vanilla bean on high speed to a ribbon stage (when the whisk is lifted, the mixture falls back into the bowl, forming a ribbon like pattern on the surface). Turn the mixer speed down and pour the chocolate mixture into the eggs. Scrape down the bowl and return the mixer to high speed. Whip the chocolate ganache until it has completely cooled and is fluffy (about 5 minutes).

The ganache can be stored, covered with parchment or plastic on the surface, in the refrigerator for up to 1 week or frozen for up to 1 month.

To roll the ganache into truffles, chill overnight. Scoop a small amount of ganache with an ice cream scooper and roll between your hands gently. Roll the truffle into cocoa powder, chopped nuts, or dip into melted chocolate. Make 36 truffles. Store the truffles in the refrigerator for up to 1 week.



Joseph's Pantry



Joseph's Pantry is an emergency food pantry hosted by Congregation Beth Emeth. Its goal is to provide a three-day supply of food and toiletries on an emergency basis, for residents of Wilmington, and specifically, for those in need, in the Ninth Ward. The hours of operation are:

Tuesday afternoons, from 3:00 PM until 6:00 PM. The pantry is always in need of donations and volunteers. Some of the items that are currently on the pantry's Wish List are: toilet paper, paper towels, napkins, canned vegetables, pasta, pasta sauce, macaroni and cheese, canned fruit, laundry detergent, and menstrual products. Donations can be dropped off at Beth Emeth or can be ordered online and shipped directly to the synagogue.

Thank you for your support.

Bar/Bat Mitzvah Parties

When planning your son's or daughter's Bar/Bat Mitzvah parties, please consider using our lovely facilities. Our social hall will accommodate a large group of family and friends. Caterers are welcome; rental is reasonable; there is room to dance, plenty of parking and a great staff to help make your party a success.



Aluminum Can Tabs

Please continue saving soda, soup and other tabs. You may drop them off in the container located at the front door of the temple. The tabs will be sent to the local Ronald McDonald House. The tabs are sold and the money helps underwrite the wonderful support that the houses provide for sick children and their families.



The Congregation Family gratefully acknowledges the following contributions:

"Nobody is ever impoverished through the giving of charity." ~ Maimonides

RABBI ROBINSON DISCRETIONARY FUND

In memory of Alan Kanofsky
from **Eugene Kane**
In appreciation of Rabbi
Robinson for the most
magnificent funeral for my
mother, Vivian from **Jeffrey
D. Merritt**
In memory of Sigmund and
Elaine Klug from **Jonathan D
Klug**
In memory of Murray Orlin
from **Mitch & Marilyn Orlin**
In memory of Vivian Merritt
from **Peter & Alison
Lustgarten**
In memory of Julian Agoos
from **Susan & Stephen
Herrmann**
In memory of Esther Cutler
from **The Cutler Family**
In appreciation of Rabbi Yair
Robinson. Thank you so
much for an absolutely beau-
tiful ceremony you provided
for Penelope. It was such a
beautiful day. from **The Pratz
Family**

CANTOR FLYNN'S DISCRETIONARY FUND

In appreciation of Cantor
Pellen for her mezzo-soprano
gift and her kindness, making
my mother's funeral so beau-
tiful and special from **Jeffrey
D. Merritt**

CARING COMMUNITY COMMITTEE

In memory of Vivian Merritt,
wife of Ira Merritt and mother
of Jeffrey Merritt from **Toby
Rubenstein**
In memory of Vivian Merritt
from **Beth Schnitman-Malm
& Robert Malm**
In memory of Vivian Merritt
from **Esther & Paul
Timmeney**
In memory of Louis Weiner
from **Madeline Rubinow**
In loving memory of Deborah
Tollin from **Mark & Shelley
Stein**
In loving memory of beloved
husband and father, Robert
Vanderloo from **Pam, Steven,
Bethan, Mike & Kayla
Vanderloo**

FAMILY ASSISTANCE

In memory of Rose Weinstock
from **Susan & Malcolm
Cobin**

HAROLD & BEATRICE SNYDER CAMP HARLAM FUND

In memory of Harold Snyder
from **Peter & Phyllis Snyder**

JOSEPH'S PANTRY

In memory of dear Sarah
Stella Ansul from **Harriet B.
Ansul**
**Jerald Eng & Robin Karol-
Eng**

In loving memory of Peter
Schnitman and Vivian
Merritt from **Judith &
Richard Insinga**
Judith Dorfman
**Richard & Judith
Goldbaum**
In honor of Sheila & Phil
Weinberg's granddaughter's
academic achievement
from **Rosalyn Selber
Lieberman**
In memory of Alfred Selber
from **Rosalyn Selber
Lieberman**
In memory of Nathan Ebner
from **Rose & Alan Ebner**
Our deepest sympathy to
Jeffrey Merritt on the loss of
his mother, Vivian Merritt
from **Rose & Alan Ebner**
In memory of Rochela
Goldhar from **Steven &
Clara Goldhar**
In memory of Harry Haskel
Farb from **Sue & Chuck
Milazzo**
In memory of Leonard
Weinstock from **Susan &
Malcolm Cobin**

LARRY ISAKOFF MUSICAL PERFORMANCE FUND

In memory of Carl Ehrlich
from the **Isakoff Family**

PAUL & LILLIAN CRAMER MEMORIAL FUND

In memory of Henry
Noskow from **Henrienne
Schneider**

RABBI GRUMBACHER DISCRETIONARY FUND

In memory of Aunt Minnie
Joseph from **Patricia & Cary
Levitt and Family**

RABBI GRUMBACHER MUSIC FUND

In memory of Mara Tartack
from **Sandy McBride**

In memory of Mara Tartack
from **David & May
DeJoseph**

In memory of Mara Tartack
from **Esther & Paul
Timmeney**

In memory of Mara Tartack
from **Judith & Richard
Insinga**

In memory of Mara Tartack
from **Linda and Bruce
Sachais**

In loving memory of
Abraham Sands, loving father,
grandfather and great-
grandfather and Leona
Berkowitz, loving mother,
grandmother and great-
grandmother from **Michele
Sands & Family**

In memory of Mara R.
Tartack from **Rachel Allen**
In memory of Mara Tartack
from **Richard and Judy
Goldbaum**

In honor of Rabbi
Grumbacher & Suzy's grand-
daughter's academic
achievement from **Rosalyn
Selber Lieberman**

In memory of Mara Tartack
from **Sherry Simmons**

TEMPLE FUND

In memory of Mara Tartack
from **Heather & Steven
Margolin**

In memory of Ida Denkin and
Marvin Noznesky from **Ann
Denkin Hoffman & Family**
In memory of Leonard Stein,
Elaine S. Stein and Reba

Levin from **Bruce & Debbie
Levin**

In memory of Ida Budin
from **Ethel & Don Parsons**

In memory of Jason Green
from **Evan & Nancy Crain**

In honor of Sue & Dennis
Cherrin on their 50th anniversary
from **Hershey & Lew
Schloss**

In memory of Annie Skolnick
from **Israel David**

In appreciation of Josh
Schoenberg for all he has
done to make my mother's funeral
extraordinary and memorable.
from **Jeffrey D. Merritt**

In appreciation of Jon, Lisa,
Lori, Mike, and Evan, for their
excellence and kindness in
preparation for my mother's
funeral from **Jeffrey D. Merritt**

In memory of Mara Tartack
from **Jeffrey Merritt**

In memory of Iris Jacobs
from **Karen Jacobs & Jack
Blumenfeld**

In memory of Vivian Merritt
and Mara Tartack from **Karen
Jacobs**

In loving memory of Hinda
Pincus from **Kate, Bob, Matt,
Megan, Josh & Eric Pincus
& Jennifer & Matt Forness**

In memory of Betty Levy
Hoffmann from **Margaret &
Leonard Rosenbaum**

In memory of Vivian Merritt,
mother of Jeffrey Merritt
from **Michael & Dayle
Joseph**

In memory of Mara Tartack
from **Murray & Diane Horn**
In memory of Lois Shapiro
& Nettie Tomases
from **Norman & Barbara
Tomases**

In memory of Janice
Antinoph from **Richard
Antinoph**

In memory of Blanche
Barrow from **Ruth
Rosenberg**

In memory of my mother,
Dora Fischer from **Sara
Hockstein**

In memory of Bessie
Greenfield and Mara
Tartack from **Sue Paul**

In memory of Esther Wilner
from **Suzy & Rabbi Peter
Grumbacher**

THE CONGREGATION BETH EMETH EDUCATION FUND

In memory of Vivian Merritt
from **Bruce and Linda
Sachais**

In memory of Mara Tartack
from **Dayle and Mike
Joseph**

TORAH REPAIR FUND

In appreciation of my dear
friend Deb Heffernan
from **Jeffrey D. Merritt**

Visit us at www.bethemethde.org or call at 302.764.2393

Yair D. Robinson, Rabbi • Peter H. Grumbacher, Rabbi Emeritus
Elizabeth F. Pellen, Cantor • David Nekoukar, President
Jonathan I. Yulish, Executive Director
Eliana M. Hall, Director of Life Long Learning

Address or phone number change, call or email: lwyzga@bethemethde.org

Funded by The Milton and Gail Wahl Fund



CONGREGATION BETH EMETH

300 W. Lea Blvd.
Wilmington, DE 19802

CONGREGATION BETH EMETH SISTERHOOD PRESENTS

Chocolate Seder

April 2, 2023 12:00 pm to 1:15 pm

