



Dear Families,

We are so happy to share that registration has officially opened for "SUMMER@TSECC"! We are looking forward to warm, sunny days filled with fun & friendship!

"SUMMER@TSECC" is a 6, 7, or 8 week summer program for TODDLERS, TWOS and THREES! The children are placed into "groups" and explore weekly themes, specials, and Jewish values while enjoying our indoor and outdoor spaces. Our incoming THREES will have the option to add on afternoon "Enrichments" such as Little Dancers, Little Chefs, Little Athletes, Little Gymnasts...to name a few! We will also provide an optional catered lunch menu.

Whether you are looking for a full-day experience for your child, a part-time opportunity to enhance social skills, or something in between, TSECC has an engaging and meaningful summer option for your family. If you are interested in our exceptional infant program, please reach out to us for more information!

**All activities will follow our enhanced health and safety COVID-19 protocols.**

Temple Sinai will also be offering a "Dreamers and Me" (Grown-up and Toddler) class 2 days a week from 9:45am-11:00am.

Enclosed in this packet is information about the variety of programs we offer. Please review carefully and call the ECC office if you have any questions. **Remember that space is limited! Act now to secure your child's spot.**

**EARLY BIRD DISCOUNT:** Registrations received by March 12, 2021 receive a \$100 discount to be applied toward final summer tuition payment.

Please join us for a fun-filled summer of sports, water play, arts, gardening, music, tricycle riding, yoga, literacy, storybook theatre, and MORE!

We can't wait for a summer of learning, laughter and love.

Warm Regards,

Lindsay Dayan  
TSECC Director

PS- We welcome you to follow us on Instagram (@templesinaiecc), like us on Facebook (Temple Sinai Early Childhood Center) and take a look at our website to see the richness of the program and the smiles on the faces of our students.

# TEMPLE SINAI

early childhood center  
*from beginning to friend*

**summer at  
TSECC**

**516.621.8708**

[mysinai.org/ecc](http://mysinai.org/ecc)

**June 28-July 2  
CELEBRATE  
USA**



**July 6-July 9  
TEDDY BEAR  
ADVENTURES**



**July 12-July 16  
SUN & SAND**



**July 19-July 23  
DINOSAUR  
EXPLORERS**



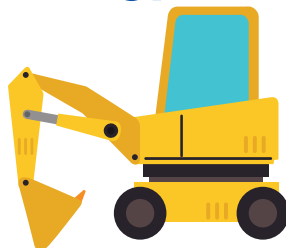
**July 26-July 30  
OUTER SPACE**



**Aug 2-Aug 6  
ANIMAL  
ADVENTURES**



**Aug 9-Aug 13  
CONSTRUCTION  
ZONE**



**Aug 16-Aug 20  
SINAI SPORTS**



**425 Roslyn Road · Roslyn Heights, NY 11577**

**This non-separation class will help spark your child's imagination!  
Learn how to optimize play with your little one as we engage in  
music, movement, literacy, a mini-Shabbat experience and  
play-based activities designed with bonding in mind.**

# **DREAMERS & ME**

**Make  
life-long connections  
at an early stage**

**\$650  
8 weeks**

**June 29–August 19  
Tuesday & Thursday  
9:45am–11:00am**

**Grownup & Toddler  
16–24 Months**



## 2021-2022 SUMMER @ TSECC TUITION SCHEDULE

DREAMERS & ME (Toddler w/ Grownup) Offered by Temple Sinai	8 Weeks	7 Weeks	6 Weeks
2 Days Tuesday & Thursday 9:45am-11:00am	\$650	N/A	N/A

INCOMING TODDLERS (18mos by 7/1)	8 Weeks	7 Weeks	6 Weeks
5 Days Classic 9:15am-12:30pm	\$3,200	\$2,800	\$2,400
3 Days (T+W+Th) Classic 9:15am-12:30pm	\$2,000	\$1,750	\$1,500
5 Days Expanded 9:15am-5:00pm	\$4,600	\$4,025	\$3,450
3 Days (T+W+Th) Expanded 9:15am-5:00pm	\$3,000	\$2,625	\$2,250

INCOMING TWOS (2yrs by 12/1)	8 Weeks	7 Weeks	6 Weeks
5 Days Classic 9:15am-12:30pm	\$3,200	\$2,800	\$2,400
3 Days (T+W+Th) Classic 9:15am-12:30pm	\$2,000	\$1,750	\$1,500
5 Days Expanded 9:15am-5:00pm	\$4,600	\$4,025	\$3,450
3 Days (T+W+Th) Expanded 9:15am-5:00pm	\$3,000	\$2,625	\$2,250

INCOMING THREES (3yrs by 12/1)	8 Weeks	7 Weeks	6 Weeks
5 Days Classic 9:00am-1:30pm	\$4,000	\$3,500	\$3,000
5 Days Expanded 9:00am-5:00pm	\$5,400	\$4,725	\$4,050

AFTERNOON ENRICHMENTS *Subject to Change	8 Weeks	7 Weeks	6 Weeks
Monday – Little Athletes	\$250	\$200	\$190
Tuesday – Little Artists	\$250	\$200	\$190
Wednesday – Little Gymnasts	\$250	\$200	\$190
Thursday – Little Scientists	\$250	\$200	\$190
Friday – Little Chefs	\$250	\$200	\$190

**EARLY BIRD DISCOUNT:** Registrations received by March 12, 2021 receive a \$100 discount to be applied toward final summer tuition payment.

A \$500 Deposit is required upon registration. Your deposit will be applied to your summer tuition. Deposits are fully refundable when notice of withdrawal is provided in writing on or before April 15, 2021. There will be no refunds or credits for deposits given after April 15, 2021. 50% of tuition is due on April 16, 2021. The balance is due on June 15, 2021. All summer tuition must be paid in full before the summer program begins.

As-needed additional care is charged at a rate of \$25/hour, subject to availability. Advance notice is required to utilize this option. Please contact Lindsay Dayan, ECC Director for more information at 516.621.8708 or LDayan@mysinai.org



## SUMMER@TSECC ENROLLMENT AGREEMENT

Child's Name: \_\_\_\_\_

Welcome to Temple Sinai Early Childhood Center (TSECC)! We look forward to a wonderful and enriching relationship with your family. To ensure safe and smooth operations, the following policies have been created for our community. All families are required to commit to this agreement to enroll their child(ren).

- A deposit of \$500 will reserve your child's spot at TSECC. This deposit will be deducted from your SUMMER tuition. Deposits are due annually and subject to change.
- Deposits are fully refundable when notice of withdrawal is provided in writing on or before April 15, 2021. There will be no refunds or credits for deposits given after April 15, 2021.
- Registrations received by March 12, 2021 receive a discount of \$100 to be applied toward final summer tuition payment.
- If you are registering a second child, 10% will be deducted from the lowest tuition.
- You are required to give one month's notice in writing of any reduction in your child's schedule. Tuition will be reduced to the new tuition after notice is received.
- Tuition is payable in advance according to the following schedule:
  - 50% of your summer tuition is due on the April 16, 2021.
  - The balance is due on June 15, 2021.
- If the full tuition is not received when due, a late fee of \$20 per day will be added until the tuition is paid in full. Tuition is due regardless of a child's absence from the program for any reason and is required to hold a child's space.
- A \$25.00 fee will be charged for a check returned for insufficient funds. If this occurs more than once, TSECC may require payment by another method for enrollment to continue.
- Tuition includes a security fee.
- The rates do not include lunch charges since families may choose to send packed lunches. For those families that choose to purchase lunches through the ECC, menus and prices will be provided in detail before the start of the summer.
- Afternoon enrichment options and pricing will be provided in detail before the start of the summer.
- To withdraw your child, you must give at least thirty (30) days' written notice prior to withdrawal. You agree to pay all tuition and fees for the thirty (30) days following your notice to TSECC, even if your child is not in attendance.
- A late pick-up fee of \$1 per child is payable for each minute your child(ren) remains after closing. This fee is subject to change.





- TSECC is generally open from 7am to 6pm, Monday-Friday. Hours and holiday schedule are set and posted annually but may be changed at any time with thirty (30) days' notice.
- Families will be notified of closures or late openings due to severe weather or other conditions by email/SMS/phone. If it is necessary to close early, it will be your responsibility to arrange for your child's early pick up. There will be no tuition credit for any time TSECC is closed.
- Family members' names, address, telephone numbers, and emails will be included on class list(s) and in TSECC's emergency notification system.
- TSECC legally cannot deny access to or release of a child to either parent/guardian, unless there is an active restraining order, a specific schedule of court-ordered visitation rights, or other Court Order in place.
- Prior to June 15, 2021, you must provide TSECC current medical and immunization records for your child(ren), which must be updated annually. Children without appropriate, current medical records may not attend.
- For the safety of all our children and families, TSECC requires that all children be fully immunized and does not accept exemptions due to personal or religious reasons.
- If TSECC is concerned that your child's needs are not being met in our program, we will involve you in the process of identifying the issues and working toward resolution. If after reasonable and appropriate interventions, TSECC determines that the program is not in the best interest of you, your child, or TSECC, we may require that your child be withdrawn from the program.
- If TSECC believes, in its sole discretion, that the actions of a parent or guardian are disruptive, inappropriate, or inconsistent with TSECC's best interests, it may elect to end a child's enrollment.
- Group placement is at the sole discretion of the ECC Director.

**This Enrollment Agreement is not intended to be all inclusive. TSECC policies and procedures may change from time to time.**

Signature of Parent/Guardian: \_\_\_\_\_

Date: \_\_\_\_\_

Signature of Parent/Guardian: \_\_\_\_\_

Date: \_\_\_\_\_

Signature of ECC Director: \_\_\_\_\_

Date: \_\_\_\_\_