

Zochreinu l'chayim



Zoch-rei-nu l - cha - yim,



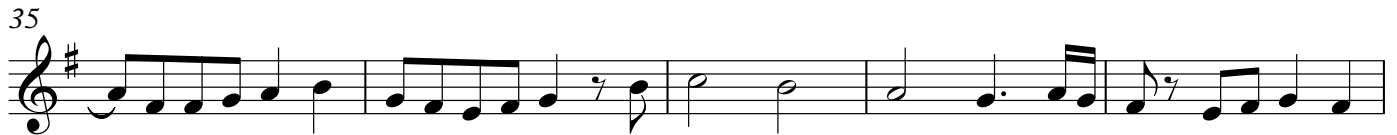
Me-lech cha-feitz ba - cha - yim, Zoch-rei-nu l - cha - yim, Me-lech cha-feitz ba - cha



yim, v - chot - vei - nu b - sei - fer ha - cha - yim, l - ma - an - cha E - lo - him cha - yim, l -



ma - - an - cha E - lo - him cha - yim.



Achat sha'alti

A-chat sha-al - ti me-et A-do - nay O-ta a-va - kesh Shiv - ti b'-
6
vet A-do-nay Kol ye ma- cha - yai La-cha-zot b' no-am b' - no-am A-do-nay ul-
11
va - keir b' - hei - cha - lo La-cha-zot b' - no - am b' -
14
no - am A - do-nay ul - va - keir b' - hei - cha - lo

Adon Olam melody (Dror yikra niggun)

Musical score for Adon Olam melody (Dror yikra niggun) in 4/4 time, one flat key signature. The score consists of four staves of music. The first staff begins with a repeat sign. The second staff is marked with a '6' above the first measure. The third staff is marked with a '10' above the first measure. The fourth staff is marked with a '14' above the first measure and contains a first and second ending bracketed over the first two measures.

Haleluya (Psalm 148:1-6)

Ha - - - le - - - lu - - - ya.
Ha-le - lu et A-do - nai min ha-sha - ma - yim, ha-le - lu - hu ba - m' - ro - mim. Ha - l' -
Y' - ha - l' - lu et shem A - do - nai ki hu sti - va v' - niv - ra - u, Va - ya - a - mi

6

Ha - - - le - - - lu - - - ya.
lu - hu chol mal - a - chav, Ha - l' - luhu kol - ts' - va - av. Ha - l' -
dem la - ad l' - o - lam chok na - tan v' - lo - ya - a - vor. Y' - ha - l' -

10

Ha - - - le - - - lu - - - ya.
luhu she-mesh v' - ya - rei - ach, Ha - l' - luhu kol - koch-vey or. Ha - l' -
- lu et shem A - do - nai ki hu tsi - va v' - niv - ra - u, Va - ya - a - mi -

14

Ha - - - le - - - lu - - - ya.
lu - hu sh - mei ha - sha - ma - yim v' - ha - ma - yim a - sher mei - al - ha - sha - ma - yim.
dem la - ad l' - o - lam chok na - tan v' - lo - ya - a - vor.

Ilu Finu - 3 Part

Ha - a I - lu ha - a fi - nu ma - lei - lei shi rah_ ka - yam. Ha - a

I - lu - lu - lu fi - nu - nu - nu ma - lei - lei shi rah_ ka - yam.

I - lu - lu - lu i - lu - lu - lu i - lu - lu - lu i - lu - lu - lu.

The first system consists of three staves. The top staff is in treble clef with a 4/4 time signature, containing a melody with lyrics. The middle staff is also in treble clef, providing a harmonic accompaniment. The bottom staff is in bass clef, providing a bass line accompaniment.

i - lu ha - a fi - nu ma - lei - lei shi rah_ ka - yam.

I - lu - lu - lu fi - nu - nu - nu ma - lei - lei shi - rah_ ka - yam.

I - lu - lu - lu i - lu - lu - lu i - lu - lu - lu i - lu - lu - lu.

The second system consists of three staves, similar in structure to the first. The top staff continues the melody, the middle staff provides harmonic accompaniment, and the bottom staff provides the bass line.

Ufros aleynu

U - fros a - ley - nu su - kat su - kat

Yai dai ...

A O O A A O

Detailed description: This system contains three staves of music. The top staff is the vocal line in treble clef with a key signature of one sharp (F#) and a common time signature (C). It begins with a 7-measure rest followed by the lyrics 'U - fros a - ley - nu su - kat su - kat'. The middle staff is a piano accompaniment in treble clef with a common time signature, featuring a rhythmic pattern of eighth notes. The bottom staff is a piano accompaniment in treble clef with a common time signature, featuring a melodic line with notes A, O, O, A, A, O.

5

Sh'-lo - me - cha. U - fros a - ley - nu su - kat

O A A O O A

Detailed description: This system contains three staves of music. The top staff is the vocal line in treble clef with a key signature of one sharp (F#) and a common time signature (C). It begins with the lyrics 'Sh'-lo - me - cha. U - fros a - ley - nu su - kat'. The middle staff is a piano accompaniment in treble clef with a common time signature, featuring a rhythmic pattern of eighth notes. The bottom staff is a piano accompaniment in treble clef with a common time signature, featuring a melodic line with notes O, A, A, O, O, A.

8

su - kat Sh'-lo - me - cha. Sh'-lo - me - cha.

A O O A O A

Detailed description: This system contains three staves of music. The top staff is the vocal line in treble clef with a key signature of one sharp (F#) and a common time signature (C). It features a first ending bracket over the lyrics 'su - kat Sh'-lo - me - cha.' and a second ending bracket over the lyrics 'Sh'-lo - me - cha.'. The middle staff is a piano accompaniment in treble clef with a common time signature, featuring a rhythmic pattern of eighth notes. The bottom staff is a piano accompaniment in treble clef with a common time signature, featuring a melodic line with notes A, O, O, A, O, A.