



# B'nei Mitzvah CELEBRATION GUIDE









Mazal Tov! As you anticipate celebrating a precious milestone for your child, we wish you and your entire family meaning and spiritual growth. This is certainly an exciting time in your life. We know it can also be stressful to plan and organize. This booklet is intended to provide general information to help you plan your simḥa. We are always available to speak personally with you and to support you at this special time.

As you begin to contemplate the kind of celebration you want, we hope you will consider Congregation Beth El as an ideal venue. By holding all or part of your celebration here, you offer great convenience to your family and guests, while putting your synagogue at the heart of your happy celebration.

At Congregation Beth El, our beautiful facility is available for your usage. You may host your event in our **Jacobs Family Community Hall** and/or outside on the **Turk Family Plaza**. As Beth El members, you have priority access to these spaces the weekend of your child's Bar or Bat Mitzvah for your Friday night dinner, Shabbat kiddush and/or lunch, or an afternoon or evening reception, or even Sunday event.

Our full service, kosher kitchen is available to be used by our **approved caterers** for your celebration meals and events. Each provides fine foods and lovely experiences for your enjoyment. **Please see our catering contact information on page 6.**

If you are planning to host more than one event on for your celebration, please use the same caterer for all of your Shabbat or Saturday meals held at Congregation Beth El.



## FRIDAY EVENING

To begin your Shabbat celebration, your family participates in our Erev Shabbat Service on Friday evenings at 6:15 p.m. Attending our Erev Shabbat Service is an upbeat and spirited way to enter into your special Shabbat.

Following the service, your family hosts modest refreshments at an **Oneg Shabbat** before everyone leaves for their Shabbat dinner. (The cost of sponsoring this Oneg Shabbat is included in your Bar/Bat Mitzvah fee. You can choose to enhance what is served for an additional cost.)

For your comfort, convenience, and enjoyment, we invite you to enjoy your Shabbat dinner at Congregation Beth El. Please speak with our event coordinator to make arrangements.

---

## SHABBAT KIDDUSH AND LUNCH

Following our Shabbat Morning service, our entire community – including your family and guests – gather either on the Turk Family Plaza or in the Jacobs Family Community Hall for kiddush. A **Basic Kiddush** includes wine and juice, hallah, and cookies. (As the Bar/Bat Mitzvah family you sponsor this kiddush, the cost of which is included in your Bar/Bat Mitzvah fee.)

You may choose to provide an **Enhanced Kiddush** for our community and your guests. We will be happy to speak with you about your Enhanced Kiddush options.

If you prefer, you may host your family, friends, and our community at a **Shabbat Kiddush Lunch**. Please speak with any of our **approved caterers** to make arrangements.





## B'NEI MITZVAH RECEPTIONS AND PARTIES

A Bar or Bat Mitzvah reception or party is called a *Seudat Mitzvah*, a “Mitzvah Meal” celebrating our children, their growth, and our delight. Celebrating a religious rite of passage at the synagogue reinforces the significance of this moment for your child, your family, and your guests.

Holding your family’s reception at Congregation Beth El represents the values our community cherishes and honors the traditions and customs of Judaism. Celebrating in our synagogue setting provides a Jewish communal context for each child who comes forward to become a Bar or Bat Mitzvah.

Our spacious facility can accommodate a large gathering of guests or be made into a smaller, more intimate space. Whether a sit-down catered affair and/or a kid’s dance and games party, our facility is flexible and ready for your event.

The Jacobs Family Community Hall can be decorated according to your tastes. It can be made into a beautiful, formal reception room, a festive, fun party room, or whatever you imagine it to be for your event.





## RENTAL FEES AND SECURITY COSTS

We charge Beth El members modest rental fees in order to maintain and operate our facility for each event. These costs are not covered by annual Membership Donations.

- **Friday Night Shabbat Dinner:** the rental fee is \$250. (This fee will be waived if holding more than one Shabbat or weekend event in our facility.)
- **Shabbat Kiddush and/or Lunch:** No fee. If catering the Kiddush or luncheon, we ask the family to add an additional 35 people to their guest count.
- **Saturday Afternoon or Evening Private Party:** the rental fee is \$500 + \$2.50 per person to a maximum total rental fee of \$1,000.
- **Security Fee is \$36 an hour per Security Guard**, minimum 4 hours per event when your reception takes place outside of regular synagogue operating hours. Regular synagogue operating hours when security is already present include Friday evenings until 9 p.m. and Saturday afternoons until 2:30 p.m.





## CATERING CONTACT LIST

### **Batya Ben Porat and**

### **Rachel Bischke**

rachel.bischke@gmail.com  
(858) 405-8246

### **Foodiz Kitchen**

Oren Koreh  
oren@foodizkitchen.com  
(619) 402-9405

### **J.B. Catering**

John Baylin  
johnbaylin@gmail.com  
(619) 203-2319

### **Shalom Catering**

Jeff Rossman  
info@shalomcatering.com  
(619) 993-1437

### **Sima's Gourmet Catering**

Sima Ross  
Simaross1061@gmail.com  
(858)-205-9738

### **Blueberry Hill Catering**

Kelly Patterson  
bbhcatering@verizon.net  
(562)445-5779 cell  
(562) 981-8300

## Questions?

Please contact: Michele Alexandria, the Rabbinic Assistant  
and Life-cycle Event Coordinator -[michele@cbe.org](mailto:michele@cbe.org) ext. 225





## DECORATIONS & PARTY FAVORS

We welcome your creativity, but keep in mind that nothing can be affixed to the walls, ceiling or doors of the Stone Family Sanctuary, the Jacobs Family Community Hall, foyer or meeting rooms. No flowers or ribbons may be affixed to the pews in the Sanctuary. Candles may be used if placed in safe containers or votive holders. Balloons must be “popped” at the end of the event by décor company or lessee.

Congregation Beth El staff is not responsible for the set up or breakdown of your décor. All décor items must be approved by Congregation Beth El at least two weeks prior to the event.

Party favors such as rice, bubble gum, silly string, bubbles, confetti, glitter, or any other items that can cause damage or not clean up easily are not allowed in any part of the facility.





## KASHRUT

When we come together in community, we do so with reverence for God, respect for one another, and commitment to Jewish values. Keeping kosher is one way that we express our relationship with God and the Jewish people. Kashrut takes the basic human need for food and transforms it into an opportunity for adding holiness to our lives.

We provide a service to our community by ensuring that all food produced and served in our facility conforms to traditional standards of Kashrut, as interpreted by our rabbis. This allows all members of our synagogue family to join in celebration and observance.

Our approved caterers prepare their food under proper kosher supervision. All food and drink must bear a kashrut certification (hekhsher) from a recognized authority. Address specific questions about your menu to your caterer or our rabbis.

Kosher food traditions also include honoring Shabbat. Your caterer understands how to prepare foods before and during Shabbat. Please be aware that no food may be acquired or delivered to the synagogue on Shabbat or holidays.

All wine, grape juices and grape products to be used for ritual purposes must have a hekhsher. For general consumption, all wines and liquors may be consumed.

Our Kosher food traditions are about ethics and compassion as they reinforce Jewish identity. Please make arrangements with your caterer or our events coordinator to donate leftover foods from your reception to local organizations who feed the hungry and those in need.

Also, please note: Congregation Beth El is a peanut free facility. We encourage you to plan your menu with sensitivity to any of your guests' food allergies or concerns.





## LIQUOR

Alcohol (beer, wine, and spirits) may be served at your events. Alcohol must be served by licensed catering staff. Serving alcohol to anyone under the age of 21 is prohibited. Alcohol service should end 30 minutes prior to the conclusion of your event.

## MUSIC

We welcome live or recorded music at your event for background ambience and/or dancing. For Shabbat afternoon events, you may begin playing music after 1:00 p.m. For evening events, please note. We comply with the noise ordinance in effect for all of San Diego. Music must conclude by 10:00 p.m.

## PHOTOGRAPHY

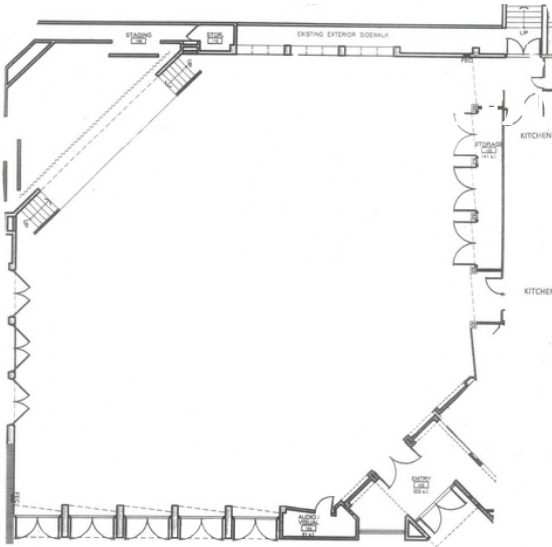
At the weekday rehearsal prior to your child's Shabbat celebration, you are welcome to take formal or informal pictures and videos with your family in the Stone Family Sanctuary and elsewhere on the Beth El campus. During all prayer services, on Shabbat or weekdays, we do not allow any photography or videography.

We welcome you to take photos or videos of your Bar or Bat Mitzvah reception. For Shabbat afternoon events, you may begin taking pictures after 1:00 p.m.



## EVENTS SPACES

The Jacobs Family Community Hall and Turk Family Plaza are available for your event celebration. Please discuss your event needs and details with our event coordinator.



### JACOBS FAMILY COMMUNITY HALL

The Jacobs Family Community Hall is ideal for elegant or casual receptions, lively celebrations including dancing and/or live music, seated luncheons or dinners, and cocktails receptions of all sizes.

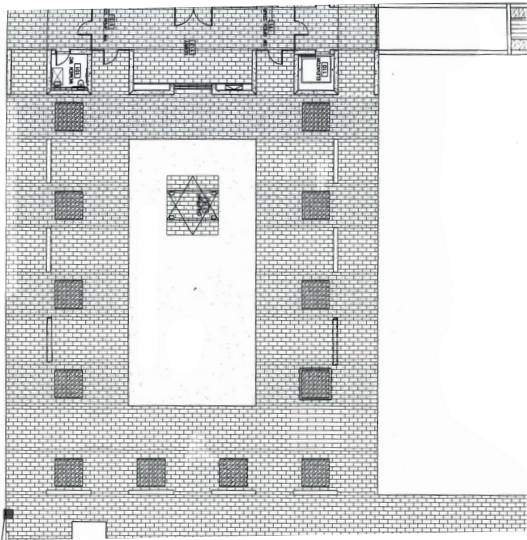
A projector and screen are available for your event.

400 guests | Reception with round tables

350 guests | Reception with round tables and buffet tables

300 guests | Reception with round tables, buffet tables, and dance floor

Round tables (60" & 72"), banquet tables (6' & 8'), belly bar tables (29"), and chairs are included with your rental fee. Linens are arranged with your caterer. You may rent a dance floor.



### TURK FAMILY PLAZA

Day or night, our beautiful Turk Family Plaza and garden is the perfect outdoor space for San Diego weather alfresco gatherings including dancing and/or live music, seated luncheons or dinners, and cocktails receptions

The Turk Family Plaza evening lighting is enhanced with market lights making it an enchanting backdrop for your special day.

Round tables (60" & 72"), banquet tables (6' & 8'), and belly bar tables (29"), and chairs are included with your rental fee. Linens are arranged with your caterer.

## PARKING

One hundred and twenty-three parking spaces are accessible from our main entrance on Gilman Drive.





CONGREGATION



**Beth El**

**CONGREGATION BETH EL**

8660 Gilman Drive, La Jolla, CA 92037

858-452-1734

[shalom@cbe.org](mailto:shalom@cbe.org)