

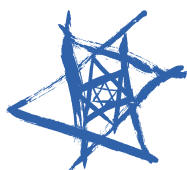
Rabbi Steven Folberg
Rabbi Kelly Levy
Cantorial Soloist Sarah Avner



PROGRAM GUIDE 5784

CONGREGATION BETH ISRAEL

Joyful • Diverse • Inclusive



**Congregation
Beth Israel**

3901 Shoal Creek Blvd
Austin, Texas 78756
www.bethisrael.org

PRAYER FOR OUR CONGREGATION, COUNTRY AND ISRAEL

Eternal God, As we enter this Jewish New Year, please watch over us, guide over us, protect us and save us with each and every day and night.

We give thanks to you for our parents and for some, their memories; for our children, our loved ones, our teachers and for all of those who help to guide us in the right direction.

We pray for peace in our country, the safety of its citizens along with strong and thoughtful leadership. We thank you for the freedom in our country and for an end to bigotry, hatred and senseless acts of violence amongst its people.

We further pray for the state of Israel, that her leaders and advisors will flourish and be led by the light of your truth.

As Jews all over the world gather to pray together, as did generations before us, please hear our prayers and let us renew ourselves for the year ahead.

May the spirit of peace, dignity, and respect live within these walls, inspiring us to care for one another with compassion; and may we be a source of goodness, light and healing for the world.

And together we say: AMEN.

table of CONTENTS

From the President.....	2
From Our Clergy	3
Our Mission	4
High Holy Days 5784	6
Shabbat at CBI	8
Holidays	9-11
Youth Education and Engagement	11-16
Adult Education and Engagement.....	17-21
Our Leadership.....	24-27
Our Staff.....	28-31

PRESIDENT

Sarah Holland

EXECUTIVE DIRECTOR

Jake Cohen

PAST PRESIDENTS

Lori Adelman
Laura Corman
Benjamin Jansen
Mike Seay
Adam Sadovsky
Brian Turner
Deliana Garcia
Leon Barish
Shari Nichols
Theresa Lyons
Jan Soifer
Shelli Miller
Beber Helburn
Paul Keeper
David Goldstein
Morton Kent
Mary Ethel Schechter*
Charles Gray

Beber Helburn
Adele Silberberg*
Marvin Shwiff*
Carolyn Turner*
David Kuperman
Leon Lebowitz*
Earl Podolnick*
Morton Krumholz*
Michael Deutsch*
Sam Shanblum*
Morton Plotsky*
Sol Smith*
Herman Schmidt*
Sanford Bauman Jr.*
Hymie Samuelson*
Sam J. Rosenfield*
Irving Ravel*
Saul Gellman*

Victor Ravel*
Joel Simon*
Milton T. Smith*
David Bassist*
Sam Lichenstein*
H.J. Eittlinger*
William J. Koen*
Louis Goldberg*
Joe Koen*
William Moses*
Charles L. Goldbaum*
B.J. Kopperl*
Phineas DeCordova*
Herman Hellman*
Jacob S. Davis*
Henry Hirschfeld*

*z"/Of Blessed Memory

from the PRESIDENT

Welcome to Congregation Beth Israel!

The High Holidays are an important time of reflection and gratitude. As we reflect on the past few years, we have held heartache and challenge with the pandemic, a hate crime against our community, and the start of a period of rabbinic transition. Yet it has also been a time of resilience, growth, and new beginnings.

We are filled with joy and anticipation as we pray together once again in our CBI home. Our beautiful new transitional sanctuary will serve as our sacred space while we work together to visualize what our new sanctuary could be for our growing, diverse community and begin to make it a reality. The updates you see here in Smith Auditorium honor CBI's 147-year history while equipping us for the future. Historic pieces that have been part of CBI through generations now sit alongside cutting-edge technology.

This spring, we launched a successful listening campaign, gathering input directly from hundreds of members about their experiences. By coming together in small groups in our homes and backyards, we forged stronger connections with each other, and your openness has helped us better understand what members value most and envision for their families and our congregation.

As we enter this next chapter, we can reflect on what we want CBI to look like in the years ahead. The story of CBI continues to unfold, and each of us has a part to write. Join us to strengthen our programs and create new ones, worship together in our new sacred space, and embrace new and old friends.

On behalf of the Board of Directors, I wish you peace, healing, and renewal in the coming year.

L'Shalom,
Sarah Holland, President
CBI Board of Directors



Sarah Holland



Rabbi Steven Folberg

Shana Tova!

It is with great pride and joy that we welcome you to our newly renovated sacred worship space. Smith auditorium will serve as our transitional sanctuary while we continue to plan for our future and determine the best course of action for our permanent sanctuary. And what a beautiful transitional space it is!



Rabbi Kelly Levy

Last year, we acknowledged with immense gratitude our friends at St. Matthew's Episcopal Church. We were blessed to use their Huffman Hall throughout the spring and summer months for Shabbat, other holidays, and special events while Smith auditorium underwent this magnificent transformation. We thank them from the bottom of our hearts for their hospitality, their friendship, and their continued support in the face of great challenge and difficulty.



Cantorial Soloist
Sarah Avner

This year, as we gather within our beloved building, we offer our heartfelt thanks to those who helped to create this special and meaningful worship space. We say "Todah Rabah" to all of you who choose to make CBI your spiritual community, whether you've been here for a few months or a few decades. And, inspired by your words during the listening campaign, we look forward to continuing our efforts to be a joyful, diverse, and inclusive community.

We pray that each of you have a year filled with good health, the blessing of great friendships and family, and an abundance of joy.

Shana Tova U'Metukah, to a sweet and wonderful year ahead!
Rabbi Steve Folberg, Senior Rabbi
Rabbi Kelly Levy, Associate Rabbi
Sarah Avner, Cantorial Soloist

Congregation Beth Israel...

Instills and nourishes Jewish spirituality

Educates and enlightens intellects of all ages to the wisdom of Torah and the joy of Jewish learning

Nurtures members through life cycle events at all ages and stages

Enhances friendships in the spirit of communal warmth and sincerity by providing a wholesome and enjoyable social milieu for people of all ages – from cradle to old age

Offers comfort and care for the sick, needy, and those in trouble or transition

Embraces strangers and reaches out to interfaith families and the unaffiliated

Extends beyond the congregation to the Jewish community and Austin community at large in the spirit of cooperation for the greater good of the community

Welcomes members of all ages, marital status, sexual or gender identity, and social and economic walks of life

Builds leadership to perpetuate a strong congregation, devoted to the advancement of Judaism for generations to come



Joyful

We approach our time together with lightheartedness and the certainty that we can make a better world.

Our Shabbat services are full of joyful singing and our holidays bring out our sillier side. Because we are together in community, there is joy in every interaction we have, whether in work, celebration, ceremony, or in times of sorrow.

Diverse

CBI exists to foster a flourishing and diverse Kehilla Kedosha: Holy Community. We do this work with intention and dedication to upholding our sacred values.

Our members come from all walks of life and everyone is welcome at CBI.

CBI is proud of our support of the LGBTQIA+ community; honors our Jews-by-Choice and Jews of Color for the richness they bring to our congregation and to the Jewish people; and embraces our history, tracing back to the early Jews who first came to Texas.

Inclusive

The way we worship and work together is as important as the work itself. In all settings, we express warmth, welcome, and respect so that all members of the community feel welcome and at ease. We value each member's presence and work to develop positive relationships through education, open communication, and engagement.

Our religious school provides specially trained staff for students with special needs; our prayer books provide transliterations for those who do not read Hebrew; our services are designed to welcome interfaith families; and our facilities and programs are accessible to people of all abilities.



HIGH HOLY DAYS 5784

EREV ROSH HASHANAH—FRIDAY, SEPTEMBER 15

Erev Rosh Hashanah Service*	8:00pm
-----------------------------	--------

ROSH HASHANAH—SATURDAY, SEPTEMBER 16

Children's Service* (birth – 2 nd grade)	8:30am
---	--------

Family Service* (2 nd – 5 th grade & siblings)	9:15am
--	--------

Rosh Hashanah Morning Service*	10:30am
--------------------------------	---------

Tashlich	1:30pm
----------	--------

CBI Backyard Grotto

CEMETERY SERVICE— SUNDAY, SEPTEMBER 17

Cemetery Service (2 locations)	10:30am
--------------------------------	---------

-Cook-Walden/Capital Parks Cemetery:
14501 N Interstate Hwy 35, Pflugerville, TX 78660

-Eloise Woods:
115 Northside Ln, Cedar Creek, TX 78612

EREV YOM KIPPUR—SUNDAY, SEPTEMBER 24

Kol Nidre Early Service	5:00pm
-------------------------	--------

Kol Nidre Service*	8:00pm
--------------------	--------

YOM KIPPUR—MONDAY, SEPTEMBER 25

Children's Service* (birth – 2 nd grade)	8:30am
---	--------

Family Service* (2 nd – 5 th grade & siblings)	9:15am
--	--------

Yom Kippur Morning Service*	10:30am
-----------------------------	---------

Meditation Service* with Rabbi Folberg	1:30pm
--	--------

Healing Service with Rabbi Levy and Sarah Avner	2:30pm
---	--------

Current Events Discussion with Rabbi Folberg	3:00pm
--	--------

Yom Kippur Afternoon Service*	4:00pm
-------------------------------	--------

Yizkor (Memorial) Service*	5:30pm
----------------------------	--------

N'ilah (Concluding) Service*	6:15pm
------------------------------	--------

Break the Fast to follow concluding service.

Sponsored by Sisterhood

**In-person and live streamed*



ANNUAL HIGH HOLY DAY FOOD DRIVE

Accepting donations through the month of September

We invite you to participate in our annual food drive in one of the following ways:

1. Make monetary donations to the Central Texas Food Bank at:
www.justgiving.com/page/cbiatx-2023
2. Donate food items for the Jewish Family Service Food Pantry.
The donation drop-off bin is located in CBI's Koen Foyer (Main Entrance)
Most needed items include canned fruit and soup



Scan to Give Now!



SUKKOT and SIMCHAT TORAH 5784 AT CBI

Sukkot begins in the evening on Friday, September 29 and ends on Friday, October 6

Sukkot, Hebrew for "huts", is a celebration of the fall harvest.

Friday, September 29: 6:30pm- Erev Sukkot Service

Saturday, September 30: 10:30am- Shabbat morning with Sukkot Festival morning.



Help Brotherhood Build the Sukkah

Wednesday, September 27 at 9:00am

Contact Marvin at gmhecker@scbglobal.net

Reserve the CBI Sukkah for your own use!

Visit the website to make your reservation.

Open House Sukkah Crawl

Interested in inviting CBI members to your Sukkah?

Email Sarah Jew at sjew@bethisrael.org

Simchat Torah is Friday, October 6

Simchat Torah is celebrated each year as we read the end of the Torah (Deuteronomy) and roll it back to the beginning (Genesis) for the new year!

Friday, October 6: *6:00pm- Erev Shabbat with Simchat Torah Service- Fun & Family Friendly!

Saturday, October 7: 10:30am- Shabbat morning with Simchat Torah Festival Service and Yizkor



Scan the QR code to download
our Liturgy Slideshows
and Book of Remembrance!

SHABBAT AT CBI

SHABBAT AT CBI

**Erev Shabbat Services every
Friday at 6:30pm in Smith Auditorium**

**Shabbat Morning Services every
Saturday at 10:30am in the CBI Chapel**

**Family Shabbat First Friday of each month at 5:30pm
*6:00pm on Friday, October 6 for Simchat Torah***

Every week, Shabbat gives you the gift of rest. Take this opportunity to slow down from your busy life and reflect on the past week and celebrate with our sacred community through music and prayer.

SHABBAT GREETERS

Are you friendly? Of course, you are!

You are just the person we are looking for to help greet our members and visitors at Shabbat services throughout the year. Our Greeters make sure that everyone who walks in the door to attend a service is warmly greeted, handed a prayer book, and made to feel welcome at CBI.



Contact Sarah Jew at sjew@bethisrael.org if you are interested in joining the team!

**Livestream Shabbat services
from the CBI Austin YouTube channel at
www.youtube.com/@CBIAustin/streams**



Scan to Visit Now!

**Is baking your thing?
Are you perfecting
your challah recipe?**



**Sign up to bake
Challah for
Shabbat onegs!**



CHANUKAH

Thursday, December 7 through Thursday, December 14

Chanukah is the Jewish eight-day, wintertime "festival of lights," celebrated with a nightly menorah lighting, special prayers and fried foods.

**BROTHERHOOD LATKE DINNER AND
CBI CHANUKAH CELEBRATION**

Sunday, December 10 at 5:30pm

Tu B'Shevat

Thursday, January 25

Sukkot is a Jewish holiday occurring on the 15th day of the Hebrew month of Shevat. It is also called "The New Year of the Trees" and the day is celebrated as an ecological awareness day.

Thursday, January 25

Mishpacha Moments (K-2nd Families) Tu B'Shevat Seder

HOLIDAYS

PURIM

Sunday, March 24

Purim at CBI is a fun, wild and crazy event. It is traditionally celebrated with a public reading of the Book of Esther, which tells the story of the holiday. Under the rule of King Ahashverosh, Haman, the king's prime minister, plots to exterminate all Persian Jews. His plan is foiled by Queen Esther and her cousin Mordechai, who ultimately save the Jews of Persia from destruction. The reading of the *m'gillah* is typically a rowdy affair, punctuated by booing and noise-making when Haman's name is read aloud. Wearing costumes is recommended!



CBI Erev Purim Celebration

Saturday, March 23

HAMAN'S HOT DOG HANGOUT AND CARNIVAL (ALL AGES)

Sponsored by Austin Temple Teens

5:00 pm

PURIM SERVICE AND SPIEL (ALL AGES)

7:00 pm

PASSOVER

Monday, April 22 through Monday, April 29

Pesach, or Passover celebrates and retells the story of the Exodus from Egypt. The story is told around a large meal with various ritual foods, each of which as a special significance to the *Pesach* story. Passover at CBI is celebrated with a family-friendly, joyful, musical Community Second Night Seder.

2ND NIGHT COMMUNITY SEDER

Tuesday, April 23 at 6:00 pm

PASSOVER MORNING SERVICE WITH YIZKOR

Monday, April 29 at 9:00 am

SHAVUOT

Shavuot, or the Feast of Weeks, is a grain harvest festival and a celebration of God giving the Torah to the Israelites on Mt Sinai. The seven-week timeframe between Passover and Shavuot is significant because Passover is about the Exodus from Egypt, and seven weeks later, they were given Torah.

SHAVUOT FESTIVAL SERVICE WITH YIZKOR

Wednesday, June 12 at 9:00 am

CDC@CBI: Child Development Center and Preschool at CBI

The Child Development Center at Congregation Beth Israel was founded in 1989 with a clear purpose – to offer exceptional early childhood education that not only engages families with young children but also fosters a profound connection to Judaism. To fulfill this meaningful mission, we have crafted a distinct educational model that draws inspiration from two remarkable sources: the renowned early childhood schools of Reggio Emilia, Italy, and the rich history of Jewish ideas and values.



Our comprehensive framework is akin to a beautiful tapestry, skillfully woven with multiple perspectives. It seamlessly integrates our cherished Jewish heritage, draws inspiration from the Reggio Emilia approach, celebrates an emergent curriculum that adapts to each child's individual needs, and wholeheartedly embraces the nurturing of crucial developmental skills. At the Child Development Center, we take immense pride in providing an environment where children can not only thrive, learn, and grow but also wholeheartedly embrace their Jewish identity and cultivate a lifelong love for learning.

With heartfelt dedication, we continue to shape an educational journey that embraces diversity, fosters creativity, and instills a strong sense of belonging within our vibrant community.

For information, contact the office at cdcadmin@bethisrael.org.

Youth EDUCATION & ENGAGEMENT



Youth educational programming at CBI is comfortable, inclusive, and welcoming of **learners of all abilities from pre-school to 12th grade**. Our congregation proudly offers opportunities that encourage engagement in a journey of learning and spiritual growth through exploration of various topics.

The goal of our youth educational programming is to foster those who are committed to life-long learning—searching and questioning, studying Torah, participating in the Jewish community, striving to master reading Hebrew prayers, and devoted to the observance of the Jewish calendar as well as the Jewish life cycle. We strive to give our children a

strong sense of belonging to the Jewish community, as well as an enduring and positive relationship with Jewish culture, Hebrew and prayer, traditions, texts, and values.

CBI + THE INSTITUTE OF SOUTHERN JEWISH LIFE

We are a proud ISJL Education Partner!

The ISJL Education Curriculum is a spiraled youth curriculum, in which students from pre-school through 12th grade revisit key content areas with increased sophistication as they progress through the curriculum. The ISJL is continually updating the curriculum not only to add content, but also to ensure it's in line with current educational best practices and ever-evolving pedagogical understanding.



The ten key content areas are: Community, Culture and Symbols, God, Hebrew and Prayer, Israel, Jewish History, Jewish Holidays, Jewish Lifecycle Events, Mitzvot and Jewish Values, and TaNaKh (Torah, Prophets, and Writings).

SUNDAY MORNING INTERNET CAFÉ



Purchase a coffee or quick breakfast and support our Youth Scholarship Fund!
Courtesy of CBI Brotherhood and Sisterhood.

SUNDAYS DURING RELIGIOUS SCHOOL
9:00AM - 1:30PM
SMITH AUDITORIUM

Youth EDUCATION & ENGAGEMENT

HEBREW ENGAGEMENT

Our Wednesday evening Hebrew program is available for students in third through sixth grade. Each of the 25 sessions includes an all-school T'filah (prayer) service geared specially toward pre-B'nei Mitzvah students. While the core focus of Hebrew school is on Hebrew engagement, each grade's approach is different.

Third graders begin their Hebrew journey learning the letters and vowels in connection to modern Hebrew words. By the end of the year, they'll be reading simple syllables.

Fourth graders continue to build on learned Hebrew, connecting letters to prayer words, and learning to read more complex syllables and words.

Fifth graders and **Sixth graders** use their Hebrew knowledge to begin learning prayerbook Hebrew. Students learn the literal and figurative meaning of the prayers we say and sing. Fifth graders focus on prayer in the first half of the Shabbat morning service while Sixth graders focus on the second half of the service.

Sixth graders learn in skill level-based classes. The level 1 class is all about practice, practice, practice! Once the students test into level 2, they focus more on reading fluency.

NEW! Two session options to increase accessibility: 5:15-5:45 pm (in person) and 5:15-6:45 pm (in person or online)



ADAM SADOVSKY
REALTOR®

(512) 740-3825

Adam@1stPropGroup.com



Your Trusted Real Estate Professional Team since 2005



CLAUDIA SANCHEZ-MOREL
REALTOR®

(512) 733-3741

CSanchezMorel@KW.com

Each Office is Independently owned and Operated.

PATHWAY TO B'NEI MITZVAH

It is an expectation of our community that students wishing to become b'nei mitzvah maintain regular attendance in our religious school program throughout the b'nei mitzvah process and through confirmation in 10th grade. We see the bar/bat/b'nei mitzvah ceremony as a significant marker in our student's life-long journey of Jewish experience and community, but not as the end point. Continued involvement in our Religious School promotes development and nurturing of their Jewish identity and traditions, and their connection to the synagogue community.

b'nei mitzvah timeline:

Fifth and Sixth grade (depending on the child's age) – parents/guardians select and submit top 4 preferred dates

18 months out from your child's assigned date- begin attending shabbat services and collecting attendance hours / begin volunteer work and tracking volunteer service hours

12 months out from assigned date- complete a Hebrew assessment and plan to begin b'nei mitzvah prayer class and tutoring.

8-12 months out (depending on the results of the Hebrew assessment)- attend (either on zoom, in-person, or combination of the two) individual, weekly, 30-minute study sessions with our tutor, Ellen Sable to practice assigned Torah and haftarah verses.

4-7 months out- begin meeting with a rabbi to study their assigned torah portion and prepare a D'var Torah (short speech that includes a lesson from the Torah portion).

6 weeks out- meet with a CBI volunteer mentor who will teach students how to lead the congregation from the Bimah, rehearsing out loud, and becoming comfortable speaking into a microphone.

Contact Sarah Avner at savner@bethisrael.org for more information on our B'nei Mitzvah program.

STUDENTS WITH SPECIAL NEEDS – THIS IS THE PLACE FOR YOU!

In a role made possible by CBI's Zach Avner Inclusion Fund, our religious school Inclusion Specialist works with our families and teachers to support all learners on their Jewish journey. We look forward to building on our strong tradition of meeting the needs of all who wish to learn and live Jewishly.

WANT MORE INFORMATION?

Please contact Carly Cera, Director of Youth Education and Engagement, at ccera@bethisrael.org, or 512-454-6806 x 218 to set up a time to talk on the phone or in person. We look forward to getting to know you and your kids!

Gan Chaverim, Garden of Friends: Celebrate Shabbat and Havdalah with your Tot!

These engagement opportunities are designed for families with children ages 0-5 and are open to the public. Older siblings are always welcome to participate.

Tot Shabbat

2nd and 4th Saturdays, 9:00 a.m.

Rabbi Folberg, Rabbi Levy, and Cantorial Soloist Sarah Avner share the leading of our engaging Tot Shabbat services. This service, designed for children under 5, is filled with songs, a story, and dancing. Following the service, we offer a craft project and time on the playground with the other families.

PJ Havdalah

Select Saturdays, 5:00-6:00 p.m.

An Introduction to Havdalah for our smallest worshipers. One of our clergy team will be leading this fun evening program. Wear your pajamas, bring a picnic dinner, and join us for an activity, playtime, and story. We'll end with a short Havdalah service to say goodbye to Shabbat.

Family Shabbat every first Friday of the month!

(see page 8)



Scan to view now!

Scan the QR code to view the Program Guide

MISHPACHA MOMENTS: FAMILY HOLIDAY FUN!

Mishpacha means family in Hebrew and our goal is to provide fun programming around several holidays to help you get more involved and meet other families with K, 1st & 2nd grade kids!

PJ Havdalah in the Sukkah

October 30, 5-6 pm

Wear your PJs and bring a picnic dinner and join us at this combined Gan Chaverim & Mishpacha Moments event.

There will be games and activities, lots of lulav shaking and we'll end with Havdalah. RSVP to Carly Cera at ccera@bethisrael.org.



See next page for information about Fall Camp,
a fun introductory weekend at Greene Family Camp.

YOUTH GROUPS

It is important that our kids, pre-teens and teens have a community that they can call their own. CBI is proud to offer three Jewish youth group experiences for our students in 4th through 12th grades.

Throughout the school year, CBI youth group events and retreats focus on social interaction with Jewish peers, social action, Jewish education and Israel, worship and personal growth and leadership.

ATeed (4th-5th) and ATT Jr. (6th-8th) have one event per month during the school year. ATT (9th-12th) may have more than one, depending on the month. The events take place at CBI or around Austin.

NORTH AMERICAN FEDERATION OF TEMPLE YOUTH – TEXAS AND OKLAHOMA REGIONAL EVENTS

Upcoming regional retreats at Greene Family Camp in Waco, TX:

October 27-29: Fall Camp for 1st-5th grade

Visit www.greene.org to register.

Contact: Lainey Komerofsky at lainey@bethisrael.org



ADULT LEARNING AT CBI FALL 2023

From Torah to Trekkies
with Rabbi Levy

**Opening to The Limitless One:
Introductory Readings in Kabbalah**
with Rabbi Folberg

Let's Talk About Israel - Part II
with Rabbi Folberg

VISIT THE WEBSITE TO LEARN MORE!

CARING COMMUNITY

With us returning to a more "normal" way of being around each other, we are bringing back the Caring Community! Caring Community is one of CBI's most effective channels of support, connection, and opportunity. Here are some things we are going to be doing over the year while still adding to the goals and ideas as we move forward:

- Rosh Hashanah bags
- Forming a Welcoming Committee (inside and outside of Shabbat services)
- Celebrating special moments with congregants
- One-year anniversary Yahrzeit care packages
- Additional support during daily living and life events

If you would like to be involved, please email Trish (clergyoffice@bethisrael.org) or Kael (office@bethisrael.org).

Adult EDUCATION & ENGAGEMENT

PROMOTING FELLOWSHIP – SUPPORTING OUR YOUTH



JOIN THE CBI BROTHERHOOD



We build the sukkah - *Come help us out! Just 1 morning/year.*

We put on the annual latke/brisket dinner - *Come help us out at Chanukah time!*

We usher at High Holy Days services - *Come help on Rosh Hashanah or Yom Kippur!*

We have monthly meetings - *Show up for food, drinks and fun!*

ANNUAL CONTRIBUTION IS ONLY \$36

Membership is open to men and women

First year membership is FREE. Accommodations are made for financial hardship.

CBI Brotherhood supports religious school and youth activities.

All proceeds go to scholarships that send our CBI kids to Greene Family Camp and to Israel.

Contact Brotherhood president, Marvin Hecker at gmhecker@sbcglobal.net for more information



**WINNER
RECEIVES
40% OF
CASH POT!**



CBI BROTHERHOOD TEXAS HOLD'EM POKER TOURNAMENT AND GAME NIGHT

Saturday, October 14th

CBI Smith Auditorium

5pm - Lesson for Beginners

6pm - Tournament

**VISIT THE WEBSITE
TO REGISTER!**

CIRCLE OF FRIENDS

Thursdays from 8:30am - 1:30pm at CBI

"Circle of Friends" Alzheimer's caregivers respite group is one of the most rewarding programs you will ever take part in. We sing, dance, play games, create art, and enjoy the company of wonderful people living with Alzheimer's, while providing a much-needed respite for their caregivers.

We are always looking for volunteers!

Help is needed with welcoming friends when they arrive, preparing breakfast and lunch, and assisting with activities such as music and art therapy, bingo, and dominoes. Shifts are 3-5 hours each. Whether you're available once a month or every week, participating in this program is both a mitzvah and a joy. If you are interested in volunteering, or if you have a loved one you would like to enroll, please contact Theresa Lyons (512) 845-5374 or Faith Steinberg (512) 926-1477.

EMPTY NESTERS

Empty Nesters is a group of vital, interested 55+ people who enjoy visiting with each other, along with many other activities. Empty Nesters and Act 2 at Temple Beth Shalom share invitations to all events sponsored by each organization.

You do not need to be a member of Congregation Beth Israel to Join Empty Nesters. Annual dues are \$15 per person.

For more information, contact David Mann at (512)346-4940, dbmann@earthlink.net.



The Joys and Oys of Grandparenting

Connecting grandparents-to-be, current grandparents, great grandparents and everyone in-between in a casual space for sharing experiences, hearing from experts, and learning useful tips and tricks!

**First Thursday of each month from 2-3pm
Beginning on October 5th in the CBI sukkah!**

Contact Amy Clift amy.n.clift@gmail.com for more information!

GA'AVAH

Ga'avah means PRIDE in Hebrew.

CBI'S LGBTQ+ COMMUNITY GROUP

CBI envisions a safe environment where LGBTQIA+ people, inclusive of all intersecting identities, are fully liberated within the congregation. Our goal is to promote acceptance throughout the Jewish community and work towards our vision of social equality.



Contact Claudia Sanchez at
claudias@cbiaustinsisterhood.org
for more information!

Love for us all
Unity for us all
Pride for us all

אהבה לכולנו
אחדות לכולנו
גאווה לכולנו

ahavah l'kulanu
achdut l'kulanu
ga'avah l'kulanu

CBI SISTERHOOD

Come join CBI Sisterhood!

Your membership dues go towards CBI scholarship funds that help send CBI kids to Jewish summer camps and summer experiences in Israel. Dues also fund our membership in the Women of Reform Judaism, an international organization in both the U.S. and Israel.

As an active member of the Women of Reform Judaism, an international organization representing over 65,000 women's groups in North America and around the world, Sisterhood is focused on enriching member's lives, supporting our congregation, and bettering our community. We promote::

- Personal growth
- Jewish community involvement
- Study of our faith
- Living Jewish values
- Fun, food, and good times

Through supporting CBI educational, social, and religious programs, and by social action and community involvement. We are proud of our over 100 year history, powered by women from all generations.

For more information, visit us at cbiaustinsisterhood.org, or contact Contact Claudia Sanchez at claudias@cbiaustinsisterhood.org.

YOUNG ADULTS

If you are in your 20's and 30's and are looking for casual social gatherings to connect with other young Jewish adults in Austin, this is the group for you! We are looking for new faces to join our group and would love input on new event ideas. We frequently partner with other Jewish Young Adult groups in the Austin area for events.

Join our Facebook group, CBI Young Adults, to stay in touch!

You do not need to be a CBI member to participate in our Young Adult programming.

Contact Julia Mullinix at Julia_mullinix@yahoo.com for more information.

Check out city-wide Young Adult events at www.shalomaustin.org/yad/ or contact Lainey Komerofsky at lainey@bethisrael.org for more information.



CONGREGATION BETH ISRAEL'S
ANNUAL GALA

THANK YOU TO OUR 2023-2024
IN-KIND DONORS AND
GALA SPONSORS

Corrie MacLaggan & Oliver Bernstein
The Cohen Family
The Barish & Keeper Families
CBI Austin Sisterhood



DOCHEN[↑]

REALTY GROUP

- BRAMLETT PARTNERS -

L'shana tovah !



*Three generations
of CBI membership*

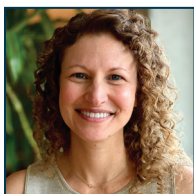
DOCHEN REALTY GROUP

We help make the difference
between a house and a home.

*Need advice or guidance? Help buying or selling?
Just curious about the Austin real estate market?
Give us a call - we'd love to chat!*

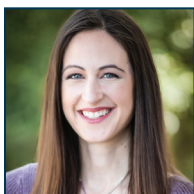
WWW.DOCHENREALTORS.COM
512.345.2227

EXECUTIVE OFFICERS 2023-2024



President: Sarah Holland

Sarah Holland is a lawyer who works with United States District Judge Robert Pitman. Sarah and her husband, Michael, both went to UT for college and then Yale Law School. They were married at CBI by Rabbi Dunsker and Cantor Shpall. After stints in Connecticut, D.C., and New York City, they returned to Austin and had 3 kids who have attended cdc@cbi and religious & Hebrew school. Sarah likes reading, hip hop, history, and pickled foods. She's getting into using a sauna, share tips!



President-Elect: Corrie MacLaggan

Corrie MacLaggan is native Austinite who grew up going to CBI with her grandparents. She and her husband, Oliver Bernstein, have two children who are graduates of the cdc@cbi and are current students in CBI's Hebrew school and religious school. Corrie is a journalist who enjoys playing soccer, cooking, and traveling.



Secretary: Phil Baum

Phil Baum is a native Austinite. His family has been connected with CBI since 1877 when great grandfather Leopold Littman was a founding member. Now voluntarily unemployed, Phil is a UT Austin grad with professional experience in sales, management, and public speaking. CBI involvement includes: Brotherhood member, regular Torah study attendee, B'nei Mitzvah student mentor, Torah reader, Hebrew teacher sub, former Sunday school teacher and song leader. Six generations of life cycle smichot include his children and grandchildren. Phil enjoys outside activities (esp. riding his bicycle), studying history (esp. US presidents), ushering at Bass Concert Hall, visiting museums and art galleries as well as other "kindsa cultcha."



Vice President of Finance: David Rancatore

David Rancatore grew up in Lexington, Massachusetts attending the reform synagogue Ohabei Shalom in Brookline. He studied psychology and neuroscience at Washington University in St Louis before moving to Austin in the fall of 2011. He is currently the Senior Director of Financial Planning and Analysis at Mondo, a former subsidiary of Alamo Drafthouse and current subsidiary of Funko, Inc. He first came to CBI for the High Holy Days in 2011 and he and his fiancé, Lauren Ditty, joined CBI as members in 2020 and feel passionately about the values and welcoming community CBI has built and fostered. He plays bass in the band Hex Boyfriend, drums in his free time, loves going to the movies, and he and Lauren have two cats and a dog.

EXECUTIVE OFFICERS 2023-2024 (CONTINUED)



Vice President of Community Engagement: Sarah Orman

Sarah Orman is a writer and legal editor for the Texas Association of School Boards. Sarah and her husband, Adam, joined CBI in 2014. Their son, Sander, celebrated his bar mitzvah in 2021, and their daughter, Aryn, will be called to the bimah in the fall of 2024. Sarah has been a member of the CBI board since 2022. Find out more about Sarah at sarahormanwrites.com.



Vice President of Fundraising: Drew Finkel

Drew Finkel was born and raised in Austin, Texas. Besides Austin, he has lived in Galveston, Dallas, and Chicago, and pursued an undergraduate education at the University of Texas. Later in life, Drew received his graduate degree from the University of Loyola in Chicago.

Drew's journey with CBI began at a young age, and he has maintained a connection with the community throughout his life. Whether directly or indirectly, he has been a member of CBI since he was 5 years old. Now, as a proud parent, Drew is actively involved at CBI even more so (Big shout out to Tot Shabbat, which his 5 and 1 year old kids LOVE!) Outside of CBI, Drew and his wife, Laura, have a wonderful family. Besides their two wonderful kids, they also have an energetic 11-year-old Beagle, and are lucky to have both of their families in Austin. The Finkel's love spending time outdoors, whether it's going for hikes, swimming, or simply running around with their children.



Vice President of Worship: Ezra Kenigsberg

Former Chicagoans Ezra and his wife Amy Flamenbaum joined the Beth Israel community in 2012 shortly after moving to Austin, when their daughter Lila started at CBI's Child Development Center. Ezra's parents Ken (z"l) and Abby pulled up their longtime New York stakes and joined CBI's Austin community in 2014--they and Ezra have been avid attendees of Saturday morning's Torah Study since. Amy (enthusiastic foodie) and Ezra (movie obsessive) both work in high technology with Salesforce, and marvel that their erstwhile toddler will become a bat mitzvah at CBI in February 2025.



Vice President of Lifelong Learning: Ava Spetalnick

Ava Spetalnick is a native Texan who moved to Austin in 2006. She's been a member of Congregation Beth Israel since 2014 and joined the board in 2019. Ava and her husband Sam Spetalnick ran the Interfaith Hospitality Network program at CBI from 2016-2019. Among Ava's board projects, she's proudest of her work chairing the listening campaign committee in the spring of 2023. Outside of her volunteer role on the board, she works as a software product manager and enjoys spending time with her husband, daughter, and their two dogs. Her passions are community building, volunteerism, cat herding, and art.

DIRECTORS 2023-2024



Christina Gorcynski

Christina Canales Gorcynski- is a social sector leader, fundraiser, lawyer, and consultant. Christina co-founded Align Point Ventures. She consults clients on governance, fundraising, and communications. Christina and her beloved partner, Ms. Brett Merfish, are members of Congregation Beth Israel. Their free time is filled with fun, friendship, and philanthropy. She is thrilled to serve Congregation Beth Israel as a proud new board member.



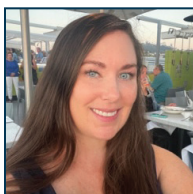
Ed Grauman

Ed Grauman is a lifelong East Coaster who moved to Austin from New York in 2012 and hasn't looked back (well, except during the summers). A father of three and husband of one, his kids—who, to protect them from embarrassment, shall remain nameless—are or have been students at the religious school since 2016. He's an attorney specializing in complex litigation on behalf of plaintiffs, often consumer class actions. He loves soccer, movies, and live music, and is excited and honored to serve the CBI community as a member of the board!



Molly Petchenik

Molly Petchenik (she/her) is from Chicago and works at the Texas Civil Rights Project, where she is a staff attorney in the Criminal Injustice program. She received her B.A. in history from Swarthmore College and her J.D. from Yale Law School. Before attending law school, Molly was a litigation assistant at the Prison Law Office in California and worked for the Honorable David S. Tatel of the U.S. Court of Appeals for the D.C. Circuit. Molly moved to Austin in 2021 and served as a law clerk to the Honorable Robert L. Pitman of the U.S. District Court for the Western District of Texas. She joined CBI in 2022 and is thrilled to get to know the community better by serving on the Board. Molly and her partner Kenny are the proud parents of a French Bulldog named Sweet Potato.



Bea Rosen

Beatriz (Bea) Rosen grew up in northeast Texas, came to The University of Texas as a freshman to major in history, and has called Austin home ever since. She is a legal secretary by profession and is currently a stay-at-home mom and volunteer lead at elementary school for Catie, 10, and Bella, 6. She and her husband Trevor Rosen have attended CBI since 2014, and Catie and Bella have been regulars at Tot Shabbat and now Religious School and Hebrew School. She enjoys reading and has been in a book club for over a decade; she also plays tennis poorly and hopes to improve!



Monica Lasky

Monica Lasky was born in Puebla, Mexico where she studied and received her bachelor's degree in communications from Universidad Iberoamericana. Monica and her husband Robert started a family with three kids, first in Brownsville and then in Amarillo TX. Fifteen years ago, they moved to Cedar Park and joined CBI where their kids became Bar and Bat Mitzvah. Monica was born catholic but raised her family with Jewish values and traditions. She finally took the step to convert eight years ago. Currently, Monica works for Leander ISD as a Dual Language Curriculum Specialist, helping teachers teach in both Spanish and English. Monica volunteers with refugees and is an advocate for social justice.

SPECIAL BOARD LIASONS 2023-2024



Immediate Past President: Lori Adelman

Lori was raised in Skokie, Illinois and lived in Minneapolis and Chicago before moving to Austin in 2006. She is an attorney who has spent her career in the nonprofit and public sectors with expertise in family and poverty law, early childhood education, crime victim services and professional regulation. Lori joined CBI in 2008 and prior to her service on CBI's Board, she served on the hiring committees for a previous cdc@cbi director and Rabbi Levy. She has been active in CBI's social justice work including as a member of the social justice committee's leadership team and a facilitator for Chavuraction Circles. Lori and Allan's daughter Sarah attended the cdc@cbi and is a current religious and Hebrew school student. In her spare time, Lori enjoys gardening, cooking, reading, and photography. Making jam is her... jam. If you need to reach her, she's probably at one of Sarah's softball games.



Sisterhood President: Claudia Sanchez

California born, Miami raised, Claudia moved to Austin to be closer to family in 2017 and joined CBI in 2019. Claudia is a Sephardic Jew and proudly represents Jews of color. She is president of sisterhood and co-founder/president of CBI's very own Jewish LGBTQ+ group, Ga'avah (Pride). She is so proud to serve in leadership to the community as a CBI board member.

Claudia has been a trained therapeutic massage therapist for the last 20 years, specializing in pain relief, energy healing and various types of bodywork. During covid, she became a real estate agent for Keller Williams realty. Claudia also serves on the board of directors for the Austin Pride Foundation.



Brotherhood President: Marvin Hecker

Marvin Hecker is the Brotherhood representative on the CBI Board. Marvin has lived in Austin since 1976 and is retired from a career in the professional audio and video systems industry. He joined CBI in 1997, when he married Gaylon Finklea Hecker, a CBI member since 1988. Marvin and Gaylon have 3 children and 4 grandchildren. Marvin grew up in Gladewater, Texas (behind the "Pine Curtain") and attended Temple Emanu-El in Longview, where he celebrated his Bar Mitzvah and was a member of TOFTY. He attended Rice University in Houston and graduated with a B.A. in B.S. (Behavioral Sciences).



cdc@cbi Representative: Rachel Slaton

Rachel Kinkade Slaton (she/her) grew up in Austin and at CBI, where her family has been members for nearly 40 years. Rachel is the cdc@cbi Parent Representative to the CBI Board. Professionally, she is the Director of Marketing and Communication for URJ West Camps (Camp Newman and Camp Kalsman) and has been working in the Jewish non-profit space for 18 years. Rachel holds Masters in Public Administration (MPA) from USC and Jewish Non-Profit Management from HUC; she attend Southwestern University for undergrad. Rachel and her husband Rich, together with their two sons, Jack (5) and Ash (6 months), live in Southwest Austin.

our STAFF



Jake Cohen (he/him)

Executive Director

Jake Cohen has dedicated his career to supporting institutions that improve and build community.

Prior to becoming Executive Director of CBI, Jake worked for The Holdsworth Center, an Austin-based nonprofit that develops leadership in Texas public school districts. From 2011-2018, Jake served as a community organizer with the Industrial Areas Foundation (IAF) in Maryland, where he worked to build capacity and impact public policy in Baltimore City and Howard County. Jake holds degrees from Vassar College and the University of Texas LBJ School of Public Affairs.

Jake and his wife Libby have been members of Congregation Beth Israel since 2019. They have two children enrolled at the cdc@cbi, Micah and Claire, and a poorly behaved Shiba Inu named Albie.



Kael Clark (he/him)

Assistant to the Executive Director

Kael Clark has found a spiritual home at CBI and is thrilled to have accepted the position as the new Assistant to the Executive Director. Kael joins the administrative team with a strong background as an Administrative Assistant and Coordinator, most recently serving in the healthcare industry. Originally from Cedar Rapids, Iowa, Kael received his Bachelor of Arts degree in Sociology from Hamline University in St. Paul, Minnesota. After graduating from college, Kael spent four years in Los Angeles prior to returning home to the Midwest. Kael moved to Austin in August of 2020 to play an active role in his nephews' lives.



Trish Ivey (she/her)

Executive Assistant to the Clergy

Trish Ivey serves CBI as the Executive Assistant to the Clergy. She brings her enthusiasm, caring nature, and experience with managing different personalities to her role. In her free time, Trish enjoys spending time with family and friends, and exploring the area with her husband Logan.



Pam Hanna (she/her)

Director of Membership Services

Pamela Hanna grew up in the Houston area but has lived in Austin since 1993. She started working at Beth Israel in July 2006. Pam likes working at CBI because "I get to see the cdc@cbi kids every day which is fun – especially the children learning to walk." She also loves that every day at CBI, she gets to assist members that she has formed friendships with. Aside from her daily work at CBI, it makes her feel good to work the door for the Annual Gala or greeting members and guests at High Holy Day Services. Every year, Pam has begun to look forward to the community and the rituals that she gets to be a part of, such as the Passover seder and hearing the shofar. Her husband, Shaun and son, Austin occasionally join her at CBI.


Sarah Jew (she/her)
Director of Community Engagement

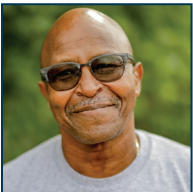
Sarah Jew has worked at CBI, in one capacity or another, since 2010. She taught 1st grade religious school for two years before she was hired as a part-time receptionist while she attended classes at Austin Community College. In 2015, Sarah took the role of Education Coordinator and in January of 2022 stepped in to be the Director of Community Engagement. She also catered many Shabbat dinners and B'nei Mitzvah receptions on the side. Sarah loves working at the synagogue she grew up attending and is passionate about supporting the growth and change happening in the Austin Jewish community. Her hobbies include cooking (eating), lounging at the pool, and spending time with her husband Chase, daughter Audrey, and their dogs!


Aaron Perchonok (he/him)
Technology Coordinator

Aaron Perchonok is a native Houstonian and grew up as an active member of the JCC, where he later coached gymnastics and taught at the Bertha Alyce Early Childhood School. After moving to Austin, Aaron worked as Lead Educator in the Alonim room at the cdc@cbi. Aaron loves finding creative ways to engage in child-led learning, specifically using technology, and his longtime love of audio and video production to document and promote the amazing learning experiences happening at the cdc@cbi. He looks forward to using these skills as the new CBI Technology Coordinator. Aaron believes that a little bit of production value can make a world of difference in the accessibility of CBI programming, as well as the enjoyment it brings to the community.


Edward Cruz-Aedo (he/him)
Facilities Director

Edward Cruz-Aedo grew up in Austin, Texas and has lived in Pflugerville, Texas for 21 years. He worked for Pflugerville ISD for 10 years. Edward and his wife Shelly have been married for 22 years. They have two sons, Tristan and Nolan, and a daughter, Haleigh. In his free time, Edward enjoys kayaking, fishing, camping, enjoying the outdoors, and spending time with his family.


Larry Johnson (he/him)
Senior Custodian

Larry Johnson grew up in Long Island, New York. He worked as a community service aid for the Long Island Police Department before starting his 25+ year career as a custodian in public schools around New York and Texas. Larry lives in Manor with his wife Kim. They have four children and ten grandchildren, most of whom live nearby in Texas. Larry enjoys fishing and being on the water and helping people whenever he has the chance.



Carly Cera (she/her)

Director of Youth Education and Engagement

Carly Cera serves CBI as our Director of Youth Education and Engagement. She grew up in Austin and at CBI, staying connected long after graduation. Carly has a Master's Degree in education and has taught school in both Israel and the U.S. Her goal at CBI is to build a strong community of students, parents and teachers who understand and live our Jewish values. Carly and her husband Ted are proud parents to two energetic, funny and loving boys who really feel at home at CBI—Cameron (2014) and Devon (2016).



Lainey Komerofsky (she/her)

Youth Education and Engagement Coordinator

Lainey Komerofsky, CBI's new Youth Education and Engagement Coordinator, graduated from the College of Charleston where she completed a double major in Jewish Studies and Women's and Gender Studies, as well as a minor in Sociology. Lainey was a camper, staff member, and unit head at URJ Greene Family Camp, and she was also an active member of NFTY-TOR, serving as regional president from 2017-2018. It was through these experiences that Lainey found comfort and belonging in the Jewish community. Through combined efforts in education and engagement, Lainey hopes to build and maintain that sense of community among our youth members at CBI, and is so excited to be here!



Jeni Pandolfi (she/her)

cdc@cbi Director

Jeni Pandolfi holds a Master of Science degree in Early Childhood Education. She has over 15 years of experience in early childhood programs including public, private, and non-profit. Jeni's work uses an attachment-based, Reggio Emilia inspired approach that honors children as they develop through exploration, self-expression, and collaboration. This method has led her to develop resources, models, and supports to effectively improve quality, access, and opportunity for Texas families with young children.

She believes that children are infinitely capable, strong and powerful and should be valued for who they are now, not simply for who they will become. As an educator, her intention is to create environments where children are celebrated for creating their own world of wonder.

In her spare time, Jeni enjoys soul cycle, practicing yoga, and spending time with her son.



Steven Kogan (He/Him)

cdc@cbi Compliance Coordinator

Steven Kogan is a naturalized Texan and cdc@cbi dad who joined the Admin Team in May of 2022. He spent many years as a camper and then counselor and staff member at Camp Young Judea in Wimberly. A University of Texas at Austin graduate, he brings 10 years of database and system management experience that he is excited to apply to the "boring paperwork stuff" to support the school's incredible educators. He enjoys cooking, movies, and playing board games with his wife and two young children.



Meret Slover (she/her)

cdc@cbi Assistant Director

Meret Slover grew up in the Austin area and graduated with a double major in Communication Studies and Feminist Studies and a minor in Philosophy at Southwestern University. She has a background in administration, service, and community organizing. Meret is thrilled to join the cdc@cbi team and to help nurture a welcoming and creative educational environment. In her free time, she enjoys reading, arts and crafts, performing in community theatre, and taking her cat on walks.



Ellen Sable (she/her)

B'nei Mitzvah Tutor

Ellen Sable is a religious educator at Congregation Beth Israel in Austin where she teaches B'nei Mitzvah students, young and older, on their Jewish journey to reaching this life milestone. Ellen and her family relocated to Austin in 1995 before becoming temple members in 1997. Inspired by other women in the community who became adult B'not Mitzvah, she enrolled in adult Hebrew classes and learned the art of Torah Cantillation with Cantor Jaime Shpall until she was called to the Torah as a Bat mitzvah in 2002. Beyond her contribution to the life of Torah in our community, Ellen is active on several nonprofit organization boards, focusing on interfaith relations and advocacy on public policy and social issues such as human rights, immigration, health care and education. She also enjoys tutoring math at Garza High School in Austin ISD, cycling and quilting.



Alicia Nichols (she/her)

Oneg Coordinator

Alicia (Ali) Nichols was born and raised in Belton, Texas and has spent most of her adult years moving around the country and gaining experience from a wide range of communities. After settling back down in Belton, she came to join CBI and has quickly grown to become part of the community here. From partaking in adult learning, to joining Sisterhood, and now as CBI part-time staff, she continues to find areas to support her new 'home'. Alicia has two daughters that are very active in their art and extracurricular activities at their respective schools. When she can find time for herself Alicia enjoys video/board games, reading, and a plethora of other 'nerdy' activities.

**Injured?
We're here
to help.**

**ADAM
LOEWY**

LoewyFirm.com
(512) 280-0800

Official Partner of
Moody Center



LOEWY LAW FIRM

HELPING INJURED TEXANS



BRIAN KERMAN
RE/MAX
CAPITALCITY

REALTOR®

(512) 921-4490

BrianKerman@remax.net

BrianKerman.com



Lic.# 0468451



**Serving the
Greater Austin
Metro Area for
Over 24 Years**

- **Buyers**
- **Sellers**
- **Leasing**
- **Relocation**
- **Investors**
- **Foreclosures**

**Satisfied
Clients Speak
the Loudest!**

**Visit my
website to
start your
home search**



SAVE THE DATE

October 15 | **Pet Blessing Service**

November 3 | **Parking Lot Shabbat**

November 4 | **Consecration Service**

November 10 | **Organ Donor Shabbat**

November 11 | **Veteran's Shabbat**

December 10 | **Chanukkah Celebration**

January 14 | **Family Tikkun Olam Day**

January 20 | **Adult B'not Mitzvah Service**

February 2 | **HIAS Refugee Shabbat**

February 9 | **NCJW Repro Shabbat**

March 23 | **Purim Carnival and Service**

April 23 | **Passover Second Night Community Seder**

May 18 | **Confirmation Service**

May 19 | **Annual Meeting**

June 14 | **Juneteenth Shabbat**

CONGREGATION BETH ISRAEL

3901 Shoal Creek Blvd, Austin, Texas 78756

www.bethisrael.org