



# BULLETIN

*Building On Our Legacy*



**CINCO  
DE MAYO  
SHABBAT**

**Friday, May 6**  
**5:30 pm Slide into Shabbat**  
**5:30 pm Service**  
**6:30 pm Cinco de Mayo Themed Dinner\***

We will hold the installation of our new Board Officers and Board of Trustee members during the service and celebrate our outgoing Education Director/Director of Community Engagement Danielle Mittleman during the dinner.



**RSVP HERE**

*\*Dinner outside, weather permitting*

*Your Home for Meaningful  
Jewish Prayer, Learning, and  
Living in Central Fairfield  
County*

**Rabbi Ita Paskind**, Spiritual Leader

**Keith Satter**, President

**Jody Dietch**, Director

**Danielle Mittleman**, Navasky  
Religious School Director

**Amy SantaLucia**, Nitzan  
Nursery School

**Hope Levensohn**, Office Staff

## IN THIS ISSUE:

President's Message .....	2
Rabbi's Table .....	3
Nitzan Nursery School.....	4
Navasky News.....	5
Editorial .....	6
Donations .....	11

### **Congregation Beth El-Norwalk**

*Affiliated with the United Synagogue  
of Conservative Judaism*

109 East Avenue  
Norwalk, CT 06851  
(203) 838-2710  
congbethel.org

# President's Message

Keith Satter



Dear Beth El Family,

Seeing my name at the top of this page and this message from me, may spark a sense of déjà vu, Back to the Future, or waking up from a long winter's nap. My last message to you was in the Spring of 2015, after three years as Beth El's president. You would

be correct in thinking, "He served the synagogue and now he is on to other things." Well, you would be right and wrong. A year after I left the Beth El presidency, I assumed the same office with our other synagogue in Harrison. Very different shuls; very different issues.

Here's the thing, however, I was honored to serve both congregations and learned a great deal in my six years as a synagogue president. So, what am I doing back here now, you might ask? Well, there are two people in my life that I have a hard time saying "No" to. The first is my wife, Betsy, and the second is Sharon DeFala, the head of the Nominating Committee. In fact, when Sharon asked me to consider another term, I was humbled and honored. Betsy and I talked and she told me to go for it, for which I am eternally grateful. I have belonged to other synagogues over the years but, frankly, my heart and soul are with Beth El and with you.

Just recently I was thinking back ten years to when I first assumed this office. No question things have changed in the past decade, but the *ruach* that this congregation has is second to none. Others may say they are "Warm and welcoming" and I say they should spend some time with us to fully get the meaning. At Beth El it is the people.

So, beyond the people what has stayed the same? First, I would say the family-style connection that is so amazing at Beth El. Whether it be the High Holidays or a Shabbat dinner, we turn out in large numbers for social events and more difficult times such as funerals and shiva minyans. Second, the service leaders we have developed whether it is our daily minyan or

Shabbat and other holidays. Third, our B'nai Mitzvah students continue to astound with their learning and they continue to return to our sanctuary to show off their skills. Finally, and certainly not least, Rabbi Paskind. She joined us just after my presidency and has grown into the job showing her leadership, teaching and sensitivity to everyone she meets.

Still, in 10 years things have changed. On the plus side, we moved quickly to adapt technology to keep us together during the early, middle and late days of the COVID epidemic. Yasher Koach to David Hirshfield, my predecessor, and Rabbi Paskind for their leadership and creative thinking. In the minus column, we are a smaller congregation. Religious institutions of all types are facing loss of members, this has hit our Conservative branch especially hard. We track our membership losses and I can tell you with confidence, people leave not because they are dissatisfied with us, but rather for lifestyle changes, such as a move to a new state.

So, where do we go from here? In two years our congregation will celebrate its 90th birthday. My goal during this term of office is to set us on a path for the next decade or longer. I want to thank David Hirshfield for turning things over in such great shape and my fellow travelers on the coming year's leadership team, David Loewenberg, First VP Ritual/Office; Stephanie Gordon, VP Education; Sharon DeFala, VP Fundraising; Marguerite Felsenfeld, Financial Secretary; Barrett Lester, Secretary; and Fran Charlip, Treasurer. Also, thanks to board member Hilary Shaefitz, who will be working with Fran and Jody to make sure finances are squared away. Thanks, too, to our Board of Trustees for your time and all of our committee chairs who make things go at Beth El.

Finally, thank you, the congregation, for your faith in me, once again. As we say each time we finish a book of the Torah, *Hazak, hazak, venit-hazek*. Be strong, be strong and we will take strength from you.

A handwritten signature in black ink, appearing to read "Keith Satter".

Keith Satter

# Rabbi's Table

Rabbi Ita Paskind

## *With Gratitude to Morah Danielle Mittelman*

On Friday evenings, we usher in Shabbat with the lighting of candles, the Kiddush over wine or grape juice, and the enjoyment of a slice of challah. For many, these rituals are accompanied by the singing of *Shalom Aleichem*, “Peace be upon you”, a hymn that nods to a pair of angels that keep an eye on us and our celebration of Shabbat. If the angels observe that the candles are lit and a festive meal is on the table, the angel with the positive attitude says “So may it be next week as well.” And if they see that Friday evening is missing the trappings of Shabbat, the angel with the pouty attitude says “So may it be next week as well.”

Through the singing of *Shalom Aleichem*, we welcome these angels into our homes, ask for their blessing, and bid them farewell—*Tzetchem l'Shalom*, “go in peace, angels of peace.”

With the end of the school year comes the end of Morah Danielle Mittelman's tenure with our Congregation Beth El, and our opportunity to thank her for her many contributions to our community over these 4 years.

*Boachem l'Shalom*: Danielle came to our community in peace: she brought her gentle presence, ease of connecting, and enjoyment of teamwork to our Navasky school and our professional staff. Danielle quickly forged relationships with all of our students and their families, and we easily came to see her as the Director of Navasky.

*Barchuni l'Shalom*: During these 4 years, Danielle has brought many blessings to our community. She built community in the school and among her staff, she put her own spin on Chanukah and Pesach programming, and dealt professionally with our children's Jewish education throughout the pandemic. Danielle agreed to become our Director of Community Engagement, where we really benefited from her facility with technology (especially in the sanctuary!) and her ability to help plan and execute large-scale programs for our

community. Most recently, Danielle has taken on a third hat—social action programming for our youth—where she's led a group of young people to prepare and freeze Mitzvah Meals for fellow congregants and anyone else who may be in need. On that note: If you need a Mitzvah Meal, please let us know!

*Tzetchem l'Shalom*: As Danielle prepares to move in a different professional direction, we wish her and her family—Jared, Marcus, and Max—health and continued friendship with our Beth El. **We really can't wait to honor you at our Cinco de Mayo Shabbat Dinner on May 6, with our whole community.**

Danielle, we thank you for being an integral part of our community. You've been a blessing to us, and so may you be in your next phase as well.



### **ABRAHAM L. GREEN & SON FUNERAL HOME**

*Family Owned And Operated  
Now In Our 3rd Generation*

**Samuel A. Green**      **Jonathan L. Green**  
Licensed in CT & FL      Licensed in CT

**Abraham L. Green**  
Founder 1916 – 2007

**203-255-8993**

**[www.greensfuneralhome.com](http://www.greensfuneralhome.com)**

**88 Beach Rd. Fairfield, CT. 06824**

**Webcast and Hearing Loop Enabled Facility**

**Serving the Jewish Community Since 1948**



# Nitzan Nursery School

Amy SantaLucia

It's that time of year again, Nitzan Nursery School has opened up registration for our Summer Fun Camp Program. If you know anyone who is looking for a super exciting camp experience, please have them reach out to Amy at [Nitzan@congbethel.org](mailto:Nitzan@congbethel.org).

Spring has been in the air...and so has Purim. If you were around the building during Purim, you may have seen some crazy things going on in the school wing. We built up our enthusiasm for Purim by having a "Weird Wacky Week". We had crazy snacks, dressed in tie dye and made a lot of noise with our groggers. The best part of Purim is always the bounce house – our students could have bounced all day if we let them!!



Nitzan tried out a new fundraiser this year. We worked with a company entitled CW Home Goods. It offered a lot of very interesting items that could be ordered. Thank you to all the families and congregants who helped to support us. All profits will be used to bring in new, innovative programming for the children.

Frogs, locusts, hail... must be time for Passover. The children learned the story of Passover, they made matzah covers and Elijah cups, learned the 4 questions and practiced singing many songs about Pharaoh and frogs!! The most popular activity by far was making matzah with Rabbi Paskind.

On the horizon... St. Jude's Trike-a-thon, Jump Bunch, Darien Nature Center, our Goodbye Party... many fun things to look forward to. At Nitzan Nursery School, we keep the fun going all year long!!



## Support Nitzan Nursery School

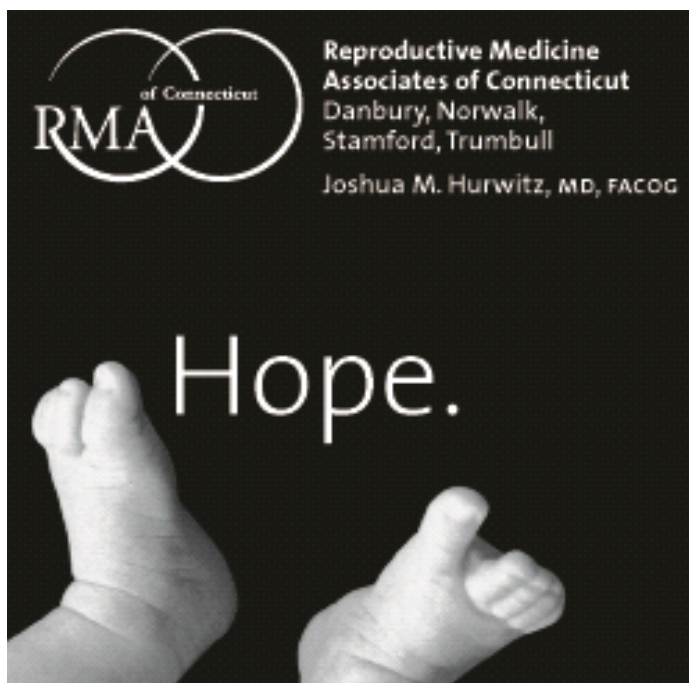
**Tuesday, May 10th**

**6:00 - 9:00 PM**

**Bring your friends, families, and neighbors  
to Mr. Frosty's Ice Cream Shop!**

*A percent of all the  
proceeds will benefit  
Nitzan Nursery School.*

*All "social distancing"  
protocols will be  
followed.*



# Navasky News

Danielle Mittleman



We've had a great year in Navasky! We adjusted to being all together again on Sundays and have learned so much having one-on-one Hebrew during the week. We were able to have things back in person again like

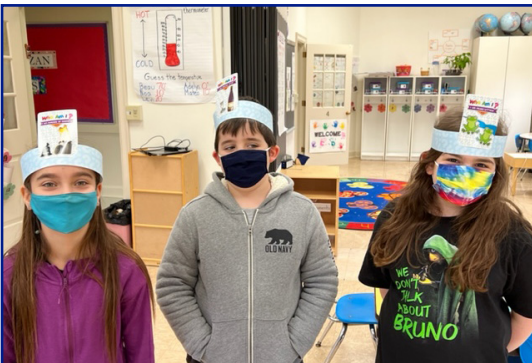
dreidel contests and Matzah making.

In May, we are even having a visit from two Israeli emissaries. We're not back to the way things were pre-pandemic because we're stronger and more mindful of who we are. The Navasky school year end is bitter-sweet, as we are proud of the accomplishments that we have made over the year and sad to not see our Navasky friends each week. My wish for all of these children is for their love of Judaism that they show each week to endure and remain with them forever.

It's hard for me to realize that this is my last article for Beth El. I've had a wonderful four years in Navasky and getting to know the entire Beth El community. I had no idea that when I signed on four years ago that

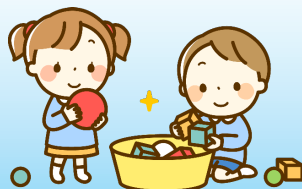


I would be shepherding a school through a pandemic. It turns out that we learned a lot about our school from the pandemic. We learned that we enjoy being together for things like holidays and for tefillah. But that we can also benefit from being alone and work at our own pace for learning Hebrew prayers. I've enjoyed my job for the past four years more than I can express and have felt completely welcomed and a part of this strong Beth El community. Your warmth and compassion has been felt by me and is seen in your children that I get the privilege to work with each week. I wish all of you nothing but the best and I hope this isn't goodbye but L'hitaot.



**Do you know any 2, 3 or 4 year olds?**

*Let them know  
about our  
wonderful Nitzan  
Nursery School!*



**REMINDER:** The deadline for the July/August Bulletin is **June 8**. Please submit articles by email to [bulletins@congbethel.org](mailto:bulletins@congbethel.org). All charitable contributions must be submitted to the office by the last day of the month (**May 31**) to be included. Donations made in **April– May** will be included. Charitable contributions to all funds received after the deadline will be included in the following issue's Bulletin Funds listing.



## Israel's Nuanced Approach to Putin's War to Recolonize Ukraine!

*"Yes, He saith, 'it is too light a thing for you to be my servant, to establish the tribes of Jacob, and to restore the scions of Israel, and I shall submit you AS A LIGHT UNTO THE NATIONS, to be My salvation until the end of the earth'" – Isaiah 49:6*

*"The National Interest is predetermined by geopolitics or the history of a country. Important political leaders never just followed their interest—they were concerned about the interest of their people." – Joseph Nye (Former US Assistant Secretary of Defense)*

*"I cannot forecast to you the actions of Russia. It is a riddle wrapped in a mystery inside an enigma: but perhaps that is the key. The key is Russian National Interest." –Winston Churchill*

*"The Purpose of the Jewish State is to secure the Jewish Future. That is why Israel must always have the ability to defend itself against any threat." –Benyamin Netanyahu*

*"The statesman must think in terms of the national interest, conceived as power among other powers. The popular mind, unaware of the fine distinctions of the statesman's thinking, reasons more often than not in the simple moralistic terms of absolute good and absolute evil." – Hans Morgenthau*

Most of us in the Congregation, as well as most countries that have taken a stand, including the US and Israel, condemn or have condemned Russia's second "unprovoked" military action against Ukraine. However, most countries continue to deny Ukraine the means and material to defend itself (shades of the embargoes placed on Republican Spain during the 1936-1939 Civil War). Most of Europe, including Germany and Hungary, will not boycott Russian gas, oil and other products. The United States has placed limited sanctions on Russia and its ruling elite. President Biden recently proposed a "Lend-lease" arrangement with Ukraine and greater sanctions on the Russians/Putin allies. Israel has provided medical teams, medicines and certain equipment but not weapons.

Israeli Prime Minister Bennett, apparently walking a tightrope, has been attempting to negotiate a settlement to the crisis, after being asked to mediate by Ukrainian President Zelenskyy on February 25, 2022, so far without success. Now, with allegations and evidence of Russian war crimes coming to the fore, what should Israel's position be? Can Israel remain an "honest broker" of a ceasefire and/or peaceful solution? What is Israel's national interest in this Eastern European War?

Bennett has stated that "our hearts are with the civilians who through no fault of their own have been thrust into this situation" and has offered humanitarian assistance to the Ukrainians and aid to Jews who seek to leave Ukraine. Bennett is hesitant to assign blame to Russia due to its military presence in Syria suggesting that Israel will continue to evaluate future consequences based on Israel's national interest.

One must realize that though Israel has diplomatic and economic relations with Ukraine, as well a national duty to aid Ukraine's Jewish population and welcome the political Aliyah of Ukrainian Jews pursuant to Israel's Law of Return, Ukraine is not a major player in the Middle East and has, in the past, supported anti-Israel resolutions in the United Nations.

Russia, on the other hand, is a superpower and one of the four principals attempting to resolve the Israeli/Palestinian conflict and reach a "just and lasting" peace accord acceptable to both sides. Russia's boots on the ground and its military presence in Syria complicate Israel's stance on the Russian war to recolonize Ukraine. It must also be stated clearly that both Hamas and the Palestinian Authority have come out in support of Russia in this crisis. In fact, the first 2,000 Jewish refugees from Ukraine as well as those immigrating from Russia are deemed an international catastrophe by the Palestinians (this might be a reason for the increased Palestinian terror attacks which have taken the lives of 12 Israelis and 2 non-Jewish Ukrainian foreign workers in the past month).

*continued on page 7*

Israel and Soviet Union/Russian relations have been crucial since the formation of the state in 1948. On November 29, 1947, the United Nations General Assembly voted on Resolution 181 (II) the Partition of Palestine into Jewish and Arab states. A two thirds majority, not including abstentions or absent members was required to pass the resolution. The final tally was 33 in favor to 13 against with 10 abstentions and one member (Siam due to a coup) absent. Stalin's Soviet Union, Byelorussian SSR, Ukrainian SSR and the Polish People's Republic (the last three, Soviet controlled puppet regimes) all voted in the affirmative. If they voted against the resolution, it would have failed, and Israel might never have existed. The Soviet Union was also one of the first nations to recognize Israel's independence and statehood in May, 1948. There are three major reasons put forth why Stalin supported the creation of Israel:

1. To discomfort Great Britain, the Palestinian Mandatory Authority and a major western ally
2. That the Arab interests could be reacquired by providing military and economic aid.
3. That as a Socialist State, Israel could have been a natural Soviet ally.

Since that time the Soviet Union and, later, Russia has worked to attempt to encroach and gain hegemony in the region. They have supplied the Arab nations with arms and political support. They have effectively helped and/or caused Israel to cease military protective action in the Sinai campaign of 1956, the Six Day War in 1967 and the Yom Kippur war in 1973 as well as on other occasions. They have sponsored and supported anti-Israel resolutions in the UN and have saber rattled

against Israel when in their interests. The Soviets also prevented Jewish immigration to Israel from the Soviet Union, only loosening the restraints for their own purposes and to keep their Arab allies in line.

At this time, the main focus of Israel's national interest is to protect citizens and residents from Iranian sponsored terror activities and to prevent Iran from creating and/or obtaining nuclear weapons. Israel is also concerned with the possibility of the US re-entering a non-enforceable Nuclear Treaty to prevent Iran from reaching nuclear weapon capacity and also for delisting the Iranian Islamic Revolutionary Guard Corps as a terrorist organization. Currently with the Russians entrenched in Syria and lending some political support to Israeli enemies, Syria, Iran and Hezbollah, Russia can control the spread of weapons procured by Hezbollah and Hamas from Iran to be used against Israel. The Russians have until now turned a blind eye to Israeli raids on Iranian and Syrian weapon convoys to Hezbollah in Lebanon. Should Russia, a major superpower, prevent these Israeli attacks, Israel's National and security interests could be put in major jeopardy.

Israel's national interest in the security of its citizens, may take precedence over its humanitarian concerns to provide additional support to Ukraine at this time. Of course, many non-government humanitarian organizations are wholeheartedly supporting Ukraine in her determined defense or her existence as a free and Democratic nation state. Hence, Israel must balance its need to placate Russia in order to allow her to halt weapons supplied by Iran to Hezbollah and other terrorist groups with an increasing moral commitment to supply further humanitarian and medical aid and support to Ukraine.



## CBE Book Club's next meeting will be Monday, May 16th.

Join via this [LINK](#) at 7:30 pm.  
Zoom Meeting ID: 8144 115 8507

The Book Club meets on the THIRD MONDAY of each month.  
Please confirm each month's meeting via our website calendar [HERE](#).  
Any date changes will also be noted in our weekly email.  
For more information, contact Barbara at [clio2@cs.com](mailto:clio2@cs.com)



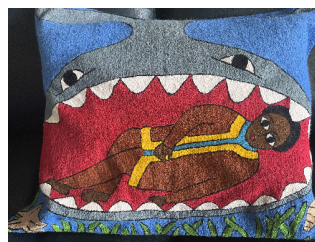
# Artifacts, Relics and Heirlooms

## *What does your family cherish?*

Rhonda & Larry Ginsberg

### Charles Halasz

I got most of these items on my trip to Ethiopia with the North American Conference on Ethiopian Jewry (NACOEJ), several years ago. Most are Bible scenes, a few show the kessim (Jewish religious leaders), eg, blowing shofar, or at the Western Wall. I watched these items being made by the Ethiopian Jews waiting to be allowed to immigrate to Israel. Thousands are still waiting, and while Israel is admitting a few thousand non-Jewish Ukrainians, there is still a delay in admitting those from Ethiopia. The return to Israel of the Beta Israel community is miraculous.



### Riva Silverman and Abram Heisler

This small engraving is by the artist Ilya Schor. It was one of a number of prints he prepared for the book “The Sabbath” by Abraham Joshua Heschel.

Rabbi Heschel, in addition to being a renowned fighter for civil rights and social justice, was a professor for many years at the Jewish Theological Seminary. Riva’s uncle, Wolfe Kelman, was his longtime colleague and collaborator, and Riva’s father, Israel Silverman was an administrator at JTS in the early sixties and the Chair of the Conservative Movement’s Committee on law and standards.

Rabbi Heschel gave prints from the book as gifts to a number of friends and colleagues and Riva inherited this print from her late father.

It hangs proudly in our home.



*continued on page 9*

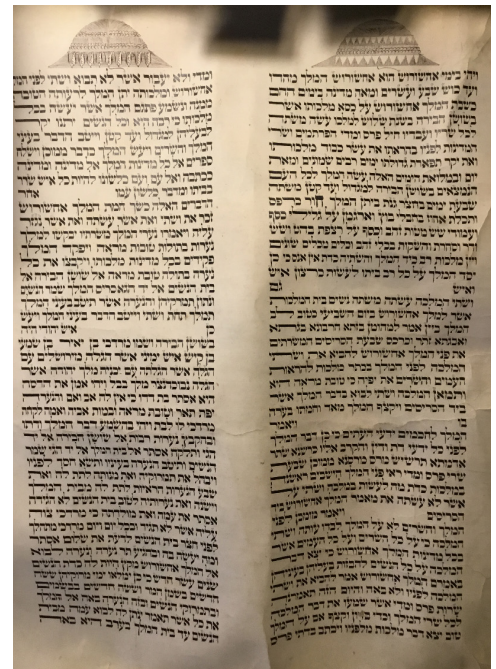
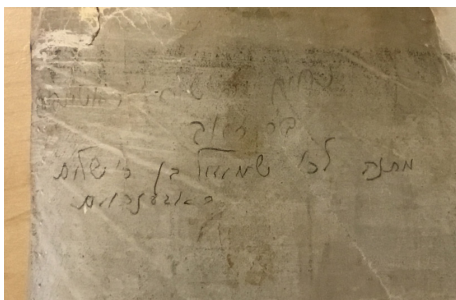
**If you have an artifact or heirloom that you wish to share with the Congregation, please submit a picture and description to the editors at: [bulletins@congbethel.org](mailto:bulletins@congbethel.org)**



## Stephen Chodroff

My zaydeh (grandfather) came to this country in 1910/1911 from Hungary. Unfortunately, I never met him as he died a couple years prior to my birth. Amongst the items I inherited from him, aside from having the honor of carrying his name (his Hebrew name was Shmuel, my full Hebrew name is Shmuel Shlomo Leib—with Shlomo Leib being my great grandfather) is a Megilat Esther. I never knew this existed until after my Uncle Harry (his son) died and my late father and I came across it when we were cleaning out his apartment. I was told that my zaydeh was quite a Torah scholar and a fairly well rounded individual and having this

Megilat Esther is very special to me. I wish I had met him. In addition to a picture of the first two columns from the Megilah is a picture of the back which states in Hebrew script present (matanah) to Shmuel ben Shalom Rosenbaum.



## Youth Social Action

Danielle Mittleman

Like many other things in our world, Covid affected our plans this year to have our youth engage in social action activities. Then, there was the realization that we could have our youth have an impact on our own shul community instead of having to reach out to the “outside world.” We started with our post-B’nei Mitzvah population and offered them a chance to come

and make some lasagnas for those either recovering from an illness or just needing a home cooked meal. They followed a simple recipe and had some time to socialize while the lasagnas cooked.

Our Navasky students in grades 2-6 also made some lasagnas as it’s a great meal to freeze for the future for anyone that needs it. We are working on having people deliver them to those that can use them. We also invite anyone that would like to make lasagnas or any other meal for people that need them in our community to come into our kitchens and cook. It’s a great way to help someone that is in need and have fun with others while you are doing a mitzvah. **If you or someone you know would benefit from one of our Mitzvah Meals, please reach out to Rabbi Paskind or the office, and we’ll bring one over!**



# Wheel It Forward!

Reprinted from Dan Woog's blog, 06880danWoog

I can't remember what my sisters and I did with my mother's wheelchair, after she died. Or any of the other medical gear, like the walker, cane and bathtub seat she used in the final months of her life.

I do know we did not donate it to Wheel It Forward. We did not know about that fantastic non-profit then.

Too many people still don't.

That's a shame. The average piece of "durable medical equipment" — those items mentioned above, along with hospital beds, knee scooters, toilet rests, crutches and more — is used for only 4 months.



Sometimes it's donated to an organization, along with everything else in a cleaned-out home. Sometimes it's stuffed in a closet. Sometimes it's discarded. Someone else could always use it.

Elliot Sloyer is on a mission to connect that equipment with people who need it. Retired now after co-founding and managing 2 hedge funds and an internet start-up — plus writing 2 children's books, and biking across the US with son, he's one of Wheel It Forward's 100 volunteers.

The Stamford-based group had its genesis when Sloyer chaperoned an 8th grade trip to Israel, and visited Yad Sarah. Run by 6,000 people, it's a "lending library" of durable medical equipment for all Israelis: rich and poor, young and old, Jewish, Arab and Christian.

When someone needs something, they get it by the end of the day. When they're done, they return it. What could be simpler?

Sloyer loved the idea. But back in the US, he found nothing similar here. Some groups were trying to collect and lend "DME," but it was haphazard at best.



Others — like the Westport Woman's Club — had to curtail their programs, due to insurance and liability concerns.

He used his entrepreneurial background to start Wheel It Forward. It's become one of the most important — yet still little-known — organizations in Fairfield County.

"This changes lives immediately," Sloyer says. With a wheelchair or walker, people become mobile. Their quality of life improves instantly.

That's not the only benefit. Sloyer notes the relief felt by people who desperately need, but can't afford, medical equipment. (Medicare does not pay for shower safety items, for example. But a \$50 seat can prevent someone from falling -- and incurring costs for an ambulance ride, surgery, rehab and everything else.)

"The return on investment is huge," he notes.

And Wheel It Forward is green. Durable medical equipment stays out of landfill. Not to mention saving all the mining, packaging and shipping that goes along with manufacturing more items.

The group's "lending library" of DME is open to everyone. But unlike a library of books — where 30% of the inventory is often out — 70% of Wheel It Forward's 2,500-item inventory is usually in use.

Some of that use comes thanks to the Westport Senior Center. Director Sue Pfister and her staff make frequent referrals.

She's made just as many calls to them for people with items they (or their relatives) no longer need. Wheel It Forward does pickup and delivery, on request.

Wheel It Forward thrives because it's needed, because people volunteer, and through financial contributions. To learn more — including how to borrow or donate equipment, volunteer or give funds — [\*\*click here.\*\*](#)



# Donations

Thank you to the following congregants whose generosity helps to maintain our Congregation.

## General Fund

Ilana & Neil Plain in memory of Janet Green's brother, Harry Schmerl  
Elizabeth & Todd Lebo in memory of Steven Rotstein's mother, Betty Rotstein  
Marguerite Felsenfeld & Steven Rotstein in honor of the birth of Betsy Bernstein & Keith Satter's granddaughter, Julia Goldy Bernstein  
Elizabeth, Keith, Jake and Haley Wexelblatt in memory of Steven Rotstein's mother, Betty Rotstein  
Betsy Bernstein & Keith Satter in honor of Melanie Rutherford's Torah reading milestone, and receiving her Keter Torah award  
Sandy & Sheldon Dobres in memory of Steven Rotstein's mother, Betty Rotstein  
Stephanie & Neil Gordon in memory of Steven Rotstein's mother, Betty Rotstein  
Gloria Walkoff in memory of Steve Stein's brother, Myron Stein  
Gloria Walkoff in memory of Harvey Hennes's brother, Leon Hennes  
Karen & Richard Schwam thanking the Kesselmans and team for the Purim Mishloach Manot  
Karen & Richard Schwam in memory of Steven Rotstein's mother, Betty Rotstein  
Karen & Richard Schwam thanking Marguerite Felsenfeld for arranging the series of Passover cooking classes  
Riva Silverman & Abram Heisler in memory of Harvey Hennes's brother, Leon Hennes  
Riva Silverman & Abram Heisler in memory of Steve Stein's brother, Myron Stein  
Cindy Almanzar in memory of her aunt, Vernell O. Bowden  
Bruny Nieves Cortes in memory of her aunt, Margarita Cortes  
Phyllis & Anthony Dreyspool in memory of Steve Stein's brother, Myron Stein  
Janis & Michael Siegel in memory of Harvey Hennes's brother, Leon Hennes  
Janis & Michael Siegel in memory of Steve Stein's brother, Myron Stein  
Linda & Steve Stein in memory of Steven Rotstein's mother, Betty Rotstein  
Linda & Steve Stein in memory of Harvey Hennes's brother, Leon Hennes

## Sarah & Marvin Rosenbaum Kiddush Fund

Sharon & Steve DeFala in memory of Steve Stein's brother, Myron Stein  
Marvin Rosenbaum in honor of the birth of Betsy Bernstein & Keith Satter's granddaughter, Julia Goldy Bernstein  
Marvin Rosenbaum in memory of Steven Rotstein's mother, Betty Rotstein  
Doug & Sharon Karp in appreciation of Laura & James Sugarman's support of the Rosenbaum Kiddush Fund  
Doug & Sharon Karp in appreciation of Michelle & Eric Fanwick's support of the Rosenbaum Kiddush Fund  
Ellen & Joel Wasserman in memory of Steven Rotstein's mother, Betty Rotstein  
Ellen & Joel Wasserman in memory of Scott Burg's mother, Barbara Burg  
Marvin Rosenbaum in memory of Harvey Hennes's brother, Leon Hennes  
Marvin Rosenbaum in memory of Steve Stein's brother, Myron Stein  
Ellen & Joel Wasserman in memory of Steve Stein's brother, Myron Stein  
Ellen & Joel Wasserman in memory of Harvey Hennes's brother, Leon Hennes  
Doug & Sharon Karp in honor of the birth of Julia Goldy Bernstein, daughter of Lauryn & Michael Bernstein, and granddaughter of Betsy Bernstein & Keith Satter  
Doug & Sharon Karp in memory of Steven Rotstein's mother, Betty Rotstein  
Doug & Sharon Karp in honor of the birth of Olivia Dec, granddaughter of Jeffrey & Catherine Kozak  
Doug & Sharon Karp in memory of Steve Stein's brother, Myron Stein  
Doug & Sharon Karp in memory of Harvey Hennes's brother, Leon Hennes  
**Nitzan Nursery School Fund**  
Linda Lerman & Rabbi Jeffery Silberman in memory of Stephanie Gordon's father, Harold Hack  
Hilary & Donald Shaefitz in memory of Janet Green's brother, Harry Schmerl  
Phyllis & Les Asher in honor of Purim

Karen & Richard Schwam in memory of Harvey Hennes's brother, Leon Hennes  
Karen & Richard Schwam in memory of Steve Stein's brother, Myron Stein

## Navasky Hebrew School Fund

Linda Lerman & Rabbi Jeffery Silberman in honor of the Bat Mitzvah of Bebe Krieger-Tyson  
Jessica & Jason Rutherford in honor of Melanie Rutherford receiving her Keter Torah award  
Hilary & Donald Shaefitz in memory of Steven Rotstein's mother, Betty Rotstein  
Hilary & Donald Shaefitz in memory of Steve Stein's brother, Myron Stein  
Jared Shaefitz in memory of Steve Stein's brother, Myron Stein  
Sharon & Steve DeFala in memory of Harvey Hennes's brother, Leon Hennes

## Rabbi's Discretionary Fund

Linda & Steve Stein in memory of Steve's brother, Myron Stein  
Gerald Rosenberg in memory of Steve Stein's brother, Myron Stein  
Dr. Jack Rice in memory of his wife, Marilyn Rice  
Karen & Richard Schwam thanking Rabbi Paskind for being so caring

## Minyannaires Fund

Sharon & Steve DeFala in honor of the engagement of Sharon & Marc Rosen's son Nate to Alma Rechnitzer

## Artist in Residence Fund

Ronni & Paul Ginsberg thanking Susan & Gary Singer for sponsoring the fabulous concert by the Maccabeats

## Tzedakah Fund

Ronni & Paul Ginsberg in honor of the birth of Betsy Bernstein & Keith Satter's granddaughter, Julia Goldy Bernstein

## Yahrzeit Fund

Gloria Berman in memory of her mother, Ethel Berger  
Linda Lerman & Rabbi Jeffery Silberman in memory of Linda's mother, and Dina and Avi's grandmother, Arlene Dubin

*continued on page 12*



Linda Lerman & Rabbi Jeffery Silberman in memory of Joan Herman-London's father, Moe Herman  
Robert and Charles Housman in commemoration of the 20th yearzeit of their father, Lee Housman  
Irma & Joseph Schachter in memory of Joseph's mother, Jennie Polley Schachter  
Irma & Joseph Schechter in memory of Irma's father, Dr. Abraham A. Klein  
Gail & Robert Ginsberg in memory of Gail's father, Jerry Kaprow  
Roberta & Peter Berman in memory of Peter's father, Louis Berman  
Roberta & Peter Berman in memory of Peter's mother, Marion Berman  
Janis & Michael Siegel in memory of Michael's father, Murray Siegel  
Ronni & Paul Ginsberg in memory of Ronni's mother, Ina Heller  
Phyllis & Les Asher and Hilda Schwartz in memory of Phyllis's father and Hilda's husband, Joseph Schwartz  
Joan Herman-London & Donald London, and Cara London in memory of Donald's mother, Claire London

Janis & Michael Siegel in memory of Michael's mother, Beatrice Siegel  
Joanne Kozak and family in memory of Joanne's father, Max Leib  
Sherwin Coplin and Brett Coplin in memory of their father-in-law and grandfather, Walter E. Berlin  
Beverly & Kenneth Krieger in memory of Kenneth's mother, Sylvia Krieger  
Pamela & Stephen Karlins in memory of Pamela's mother, Stephanie Rome  
Pamela & Stephen Karlins in memory of Pamela's father, Lawrence Rome  
Betsy Bernstein & Keith Satter in memory of Debra Satter  
Gail & Richard Epstein in memory of Gail's grandmother, Rebecca Bassin  
Gloria Berman in memory of her father-in-law, Samuel Berman  
Gerald Rosenberg in memory of his brother, Bernard Rosenberg  
The Karp family in memory of their father, grandfather and great grandfather, Nathan Kaplan  
Phyllis & Richard Weisberg in memory of Phyllis's father, Abraham B. Hertz

Ronni & Paul Ginsberg in memory of Steven Rotstein's mother, Betty Rotstein  
Barbara Schindler in memory of her mother, Rose Benely  
Stefanie & Winthrop Baum in memory of Winthrop's uncle, Ivan Meyer  
Stefanie & Winthrop Baum in memory of Winthrop's great grandfather, Emanuel Baum  
Virginia & Larry Katz in memory of Larry's mother, Evelyn Katz  
Joan Herman-London & Donald London in memory of Donald's father, Bernard London  
Stefanie & Winthrop Baum in memory of Winthrop's father, Walter Baum  
Ken Siegel, Caryn & Andrew Moss, and Michelle & Greg Marrinan in memory of their wife and mother, Phyllis Siegel  
Sherwin Coplin and Brett Coplin in memory of their father and grandfather, Benjamin N. Coplin  
Myra Skluth & Mark Burwick in memory of Myra's father, Herbert Skluth

COVID has hurt our sales – please support this program –we deliver!!

## Food and Gift Cards



Don't forget to buy your Food and Gift Cards! To order, call the synagogue at 203-838-2710 or fill out the form below.

### Beth El Food & Gift Cards Program

Please return this form to:  
Congregation Beth El-Norwalk, 109 East Ave, Norwalk, CT 06851

Please consider joining the growing number of congregants participating in the Food & Gift Card Program of the Synagogue. We earn a profit of 5-10% on your purchase of **Caraluzzi's**, **ShopRite**, **Stew Leonard's**, and **Stop & Shop** gift cards. It doesn't cost you a penny, because the profit comes to us directly from the stores when we purchase the cards. Please fill out the form below and we will enroll you in the program. You may pick up the cards at the Synagogue or from one of our volunteer sellers, or we will be happy to DELIVER them to you on a regular basis. Remember, it doesn't cost you anything; you buy the cards at face value from the Synagogue. Use them as cash at the participating stores and the Synagogue earns money! This all goes to help support our various programs. Call the office at 838-2710 with any questions. Thank you!

Name \_\_\_\_\_ Telephone \_\_\_\_\_

Address \_\_\_\_\_ City \_\_\_\_\_

Caraluzzi \$ \_\_\_\_\_

Stew Leonard's \$ \_\_\_\_\_

ShopRite \$ \_\_\_\_\_

Stop & Shop \$ \_\_\_\_\_

Caraluzzi's



Please set up delivery of the cards on the \_\_\_\_\_ of each month. I will pick up the cards from the Synagogue on the \_\_\_\_\_ of each month.

\_\_\_\_\_ I would prefer to pick up the cards from one of the Synagogue's sellers. Please tell me the name and phone number of the closest seller.

