

THE VOICE

Temple  Shalom

June/July 2021

Volume XLI

Sivan/Tammuz/Av 5781

Number 11

Hello
Summer



Temple Shalom

One family, many connections

4630 Pine Ridge Road

Naples, FL 34119

Phone: (239) 455-3030 • Fax: (239) 455-4361

www.naplestemple.org

info@naplestemple.org

Education Office: (239) 455-2233 • Preschool Office: (239) 455-3227

STAFF

DEVELOPMENT COORDINATOR

Shayna Aronson

saronson@naplestemple.org

ADMINISTRATIVE & CLERGY ASSISTANT

Randi Butterworth

rbutterworth@naplestemple.org

A/V TECHNICIAN

Megan Black

MUSIC DIRECTOR

Dr. James Cochran

MAINTENANCE TECHNICIAN

Pedro Cruz

maintenance@naplestemple.org

DIRECTOR OF COMMUNICATIONS

Jeanette Fischer

jfischer@naplestemple.org

PRESCHOOL

ADMINISTRATIVE ASSISTANT

Julie Fischer

preschool@naplestemple.org

YESH ADMINISTRATIVE ASSISTANT

Mary Flores

education@naplestemple.org

CONTROLLER

Maxine Gould

mgould@naplestemple.org

GROUNDKEEPER

Rick Holsbeke

maintenance@naplestemple.org

FACILITY MANAGER

Victor Lucas

vlucas@naplestemple.org

CLERGY

SENIOR RABBI

Adam F. Miller

amiller@naplestemple.org

CANTOR

Donna Azu

dazu@naplestemple.org

DIR. OF LIFELONG LEARNING

Rabbi Ariel Boxman

aboxman@naplestemple.org

RABBI EMERITUS

James H. Perman, D.D.

rabbi@naples.net

PROFESSIONAL STAFF

EXECUTIVE DIRECTOR

Deborah R. Fidel

dfidel@naplestemple.org

MISSION STATEMENT

Temple Shalom of Naples is an inclusive Reform Jewish congregation where all individuals are equal partners in making our world whole and holy. We are One Family, believing in the sacredness of relationships, fostering connections – one to another, Temple, Israel, Torah and God. We are living Jewish values and nurturing future generations.

BOARD OF TRUSTEES

PRESIDENT

Daryl Sissman

FIRST VICE PRESIDENT

Ed Kaufman

SECOND VICE PRESIDENT

Merrill Hassenfeld

THIRD VICE PRESIDENT

Robin Mintz

TREASURER

Susan Ritter

FINANCIAL SECRETARY

Steve Pino

RECORDING SECRETARY

Dr. John Little

SISTERHOOD PRESIDENT

Barbara Druckman

MEN'S CLUB PRESIDENT

Ron Yasbin

TEMPLE HISTORIAN

Howard Glicker

Ed Alexander

The Honorable Kyle Cohen

Joshua Garfield

Ellen Goldberg

Susan Hager

Andrew Karpman

Bobbie Katz

Stacy Nicolau

Jack Rabin

Estelle Price



The Voice is published monthly. June/July are combined issues.

Editor—Jeanette Fischer • Advertising—Maxine Gould

Disclaimer: Advertisements published in Temple Shalom's monthly newsletter, The Voice, in no way constitute an endorsement of a product or service by Temple Shalom.

CLERGY MESSAGE

RABBI

Adam F. Miller



FREE AT LAST - NOW WHERE DO WE GO?

There is nothing like that moment when one first receives a driver's license. Next to reaching bar/bat mitzvah, it is the most anticipated milestone in the life of a young person. The world suddenly fills with possibility – no longer is one required to depend solely upon the availability of a parent or guardian to shepherd you from one place to another. You have freedom! But, that freedom comes with a catch. At least when the Israelites left Egypt they knew they wanted to return to the Promised Land (albeit through a very circuitous route!). When getting a driver's license, one realizes that there is a whole new world of choices that have to be made about where to go, when to leave, how much gas is left in the tank, and who will ride along.

In May, we all received a new license – the freedom for those who are vaccinated against COVID-19 to engage in a host of activities without masks or fear of health risks. After more than a year of limitations, schedule alterations and social distancing, we all eagerly celebrated this news. Some rushed out to quickly dive back in – eating in restaurants, going to stores, attending events, and meeting with friends in ways that they had not in over a year. As the euphoria from that initial burst of activity draws to a close, we find ourselves facing a similar dilemma to the driver's license, where do we go from here?

Some desire a return back to life just as it was before the pandemic began. Yet, life is not linear. We cannot simply rewind, like a movie, and relive the parts that we may have missed earlier. One reason we cannot go back is that we are changed by our life experiences. Our successes, failures, the lessons we learn and the people we encounter cause our perspective to evolve over time. Rashi, the great Torah scholar, recognized this aspect of life. He told his students that his favorite pursuit was to keep reading Torah over and over again, because while the text didn't change, he did. As a result, Rashi could always find something new each time he read the text. Similarly, we will now have new perspectives and appreciation as we return to some of the activities we engaged in before the pandemic. Many of those returning to services in-person echo these sentiments, having found a new appreciation for time spent engaged in our One Family.

In addition to returning to activities from before COVID-19, we now have the opportunity to explore new pursuits as well. After spending time away from our busy lives, many recognized behaviors and activities that we engaged in, which may not have been fulfilling, but we did not know how to pull back. Instead of resuming those less satisfying engagements, seek out something new. One is never too old to begin a new experience. When Cato the Elder was 80, he began studying a new language. His students asked why he would pursue new learning at such an old age. Cato replied, "Today is the youngest I will ever be again. No time like the present to start something new..." Use this summer to try a new experience, or learn about something you have not explored before.

Whether you are returning to old endeavors, or exploring something new, I wish you a wonderful summer ahead. May we go this summer from strength to strength, enjoying our new freedom as we move further away from the darkness of COVID-19 toward the light of a better tomorrow.

L'Shalom,
Rabbi Adam Miller

CLERGY MESSAGE



CANTOR

Donna Azu

As I write this, I have been noticing a change in Naples. Car carriers are driving out of town, there is less traffic on the roads and many of our neighbors have started to leave for the summer. After such a busy and unusual year at Temple Shalom, it's also nice to have a little bit of quiet. This issue of The voice has me thinking about summer and I can't help but get excited about the prospect of seeing people in our building and the season ahead!

Summertime arriving soon also means Summer Shabbat at Temple Shalom, and that is most certainly something to look forward to. Not only do the summer months give me an opportunity to take some time to rest and re-energize myself before season, it's a great opportunity for me to start planning for the High Holy Days and all of the wonderful programs and activities taking place next year.

Summer services have a comfortable, more intimate atmosphere. Though many of the snowbirds are gone, it's a great opportunity for those who are here year-round to connect to each other, especially after our 14 months apart. And of course, what could be a greater celebration of God's rest from Creation, than celebrating Shabbat surrounded by community and friends? In general, summertime is the perfect time to reconnect ourselves to the weekly cycle of Jewish life.

During the months of June and July we'll be celebrating Shabbat together a little earlier than usual. We'll gather together for a 6:00pm service. Come early, at 5:30pm for the "pre-neg", an opportunity to connect with friends and enjoy some light refreshments. The earlier service time and the late sunsets make the perfect opportunity for leisurely Shabbat dinners with friends on outdoor furniture, or long, lingering Shabbat picnics, taking advantage of warm late evening weather. I hope to see you at Temple Shalom this summer, celebrating Shabbat and what will surely be a beautiful summer.

L'Shalom,
Cantor Donna Azu



CLERGY MESSAGE

DIRECTOR OF CONGREGATIONAL EDUCATION

Rabbi Ariel Boxman



Temple Shalom Preschool is excited to open enrollment for our Baby and Me class beginning in August 2021.

Our Baby and Me class is geared to students 0-2 along with their caregivers. The class meets twice a week from 9:00am-11:30am and includes a variety of engaging activities.

During the morning, participants will sing with Miss Jane, engage in sensory play in our brand new indoor gym, enjoy a delicious snack, learn basic baby sign-language, and on Fridays, celebrate Shabbat with our preschool students.

Through play, sensory activities and social interactions, children will begin to grow and develop important skills. Further, since caregivers attend along with their babies, our Baby and Me class offers an opportunity for adult social interaction and engagement.

Baby and Me is offered on Mondays and Fridays and begins during the week of August 16. If you are interested in enrolling, please join me for a tour of our beautiful facility. As always, the first class is free!

L'Shalom,
Rabbi Ariel Boxman
aboxman@naplestemple.org



TEMPLE SHALOM PRESCHOOL

BABY & ME

MONDAYS AND FRIDAYS
9:00AM-11:30AM

MONDAY ONLY- \$130/MONTH
FRIDAY ONLY- \$130/MONTH
MONDAY & FRIDAY- \$200/MONTH

MUSIC - DANCE - STORIES- SHABBAT
BAKING - YOGA
SENSORY PLAY - GARDENING

WWW.TEMPLESHALOMPRESCHOOLNAPLES.ORG



THE STRENGTH OF A PEOPLE.
THE POWER OF COMMUNITY.

We thank the Jewish Federation of Greater Naples for their generous support!



WORSHIP WITH US

We are thrilled to welcome you back to in-person services!

If you are not vaccinated, please wear a mask and socially distance from those not in your family.

Shabbat Worship

Friday evenings at 6:00pm

"Pre-neg" at 5:30pm

Saturday mornings at 10:00am

Havdalah

Saturday evenings at 7:30pm

Via Zoom and Facebook Live only

You can also join us online!

LIVESTREAM & FACEBOOK LIVE

Find the livestream at
naplestemple.org/media

Facebook

Facebook.com/templeshalomnaplesfl

Zoom

Zoom information is provided by email or on the Members page of the Temple Shalom website.

LEADERSHIP MESSAGE



PRESIDENT

Daryl Sissman

VOLUNTEER OPPORTUNITIES

Hineyni - Here I am! And I want to help!

Whether you have an hour or two per week, month or year, we are always looking for volunteers! Does anything below appeal to you? If so, please [click here](#) and we will be in touch. Questions? Call the Temple Shalom office at 239-455-3030 for more information.

- Bake and deliver a challah to congregants who need a pick-me-up, recently lost a loved one or are welcoming a new baby
- Greet at Temple services and programs
- Bake for an Oneg Shabbat
- Lead a Shiva minyan or comfort your fellow congregants by attending one
- Put your background in retail to work in the Gift Shop
- Photograph Temple Shalom events
- Join the annual fundraiser planning team
- Sing in the choir
- Lend a hand in the office stuffing envelopes or answering phones
- Serve as a High Holy Days usher
- Share your experience in construction, architecture, real estate or design with the Building and Grounds Committee
- Call our “super seniors” periodically to say hello and let them know we care
- Lend a hand with Mitzvah Day planning
- Assist our clergy with holiday planning
- Act in the Purim shpiel
- Help organize the Passover seder
- Write articles about our members and activities for The Voice
- Help keep the Perman Library tidy and organized
- Lend your financial know-how to the Finance or Investment Committees
- Governance
- Help plan the Scholar-in-Residence weekend
- Help plan the Artist-in-Residence weekend
- Join a great group of men to plan fun activities and support the Temple
- Strengthen Temple Shalom’s future by soliciting gifts to the endowment
- Help “Repair the World” through social action projects
- Make and deliver a meal for someone who is recovering from illness or surgery

Beginning Thursday, July 1, the Temple Shalom office will be open and staff will be on-site during regular business hours.

**Monday - Thursday 9:00am to 5:00pm
Friday 9:00am to 3:00pm**

L'SHALOM MEMBERSHIP PLEDGE

2021-2022

May 7, 2021

Dear Friend,

One Family, Many Connections. Over the past year, our congregation found strength and hope from the remarkable connections that make our holy community sacred. We overcame the challenge of physical distancing, finding comfort and companionship through our many digital platforms – expanding our virtual footprint with new technology and innovative offerings. Our members stepped forward, time and again, to support one another through acts of tzedakah, giving generously of their time and talent to help those in need. Members remained in contact with one another – ensuring that no one felt isolated or alone. Temple clergy and staff implemented creative models for in-person engagement – including the memorable holiday drive-ups, outdoor shofar blowing, and the Purim Palooza. We also met the needs of those impacted physically, emotionally, and financially by the pandemic, supplying them with assistance, meals, and support.

All of this was made possible by you. Your generous gifts from the heart enable us to remain a vibrant center for Jewish life in Southwest Florida. Thanks to your support, we meet the needs of our community by providing spiritually uplifting worship, meaningful lifecycle rituals, engaging educational opportunities for adults, transformational programming for children, and a congregation where all feel at home. We believe in the power of our One Family, and that we are stronger together. We are thrilled to be back with regular in-person Shabbat services and look forward to gathering on the High Holy Days, as well as the much-anticipated future return of the popular Shabbat oneg.

Our *L'Shalom* pledge program continues this year. Recognizing the rising costs of security, COVID19- safety and cleaning, as well as the rising needs of our 770 household congregation, the recommended sustaining level will increase this year to \$1,300 per adult (\$2,600 for a household with two adults). This amount was carefully determined by the Temple finance committee, and then reviewed by the Temple Shalom Board of Trustees.

As a vital part of our Temple Shalom family, we gratefully thank you in advance for your ongoing investment of your time, talent and resources in Temple Shalom. We ask that your pledge reflect what your heart feels and what you can afford. Know that any amount that you pledge above the sustaining amount will be recognized as a contribution to Above & Beyond. Enclosed are your *L'Shalom* pledge form and a reply envelope. Please review the enclosed materials. If you have questions, contact Deborah Fidel, Executive Director, at 239-455-3030. We ask that you return your pledge form by June 16, 2021. As we have done in prior years, if we do not hear from you by June 16, we will assume that you are making your pledge at the sustaining level.

We look forward to your active engagement in Temple Shalom's One Family for years to come.

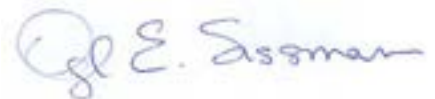
L'Shalom,



Rabbi Adam F. Miller



Deborah R. Fidel, Executive Director



Daryl Sissman, Temple President

L'SHALOM MEMBERSHIP PLEDGE FORMS

If you have not already returned your L'Shalom pledge, please take a moment to do so now.
Forms can be mailed to 4630 Pine Ridge Road, Naples, FL 34119

2021-2022 L'Shalom Pledge

NAME(S) _____

ADDRESS _____

PHONE _____

EMAIL _____

Please make any necessary updates to the information above.

☐ We are pleased to make a L'Shalom pledge for 2022-2021 at the sustaining level of \$2,600.
(Two or more adult household)

☐ I am pleased to make a L'Shalom pledge for 2021-2022 at the sustaining level of \$1,300.
(Single adult household)

☐ I/We are pleased to make a L'Shalom pledge for 2021-2022 in the amount of \$_____.

Amounts pledged above the sustaining amount will be contributed to Above & Beyond.

Signature(s)

Date

Please complete the reverse side of this form, sign it and return it in the envelope provided by Wednesday, June 16, 2021.

If we do not hear from you by June 16, we will assume that you are making your pledge at the sustaining level.

.....
Tear off the section below and retain for your records.

Temple  Shalom

Fiscal year 2021-202 L'Shalom Pledge

I/We pledged \$_____ to help sustain Temple Shalom, fulfill the needs of members and further enhance the relational nature of the Temple Shalom One Family.

2021-2022 L'Shalom Pledge

Please tell us when and how you would like to pay your pledge.

STEP 1: WHEN I/WE CHOOSE TO FULFILL MY/OUR PLEDGE (Please check one)

- ☐ One payment now
- ☐ One payment in July
- ☐ Quarterly payments (July and October 2021, January and April 2022)
- ☐ Monthly (Ten months - July 2021 through April 2022)
- ☐ Please contact me to make other arrangements

STEP 2: HOW I/WE CHOOSE TO FULFILL MY/OUR PLEDGE (Please check one)

Sustaining amount: ☐ Single (\$1,300) ☐ Multi-adult (\$2,600) ☐ Other amount \$_____

☐ By check

☐ I/We authorize Temple Shalom to charge my/our credit card
(Visa, MasterCard, Discover, American Express)*

Account Number: _____ Exp: ____/____ CSV: _____

Print name as it appears on card: _____

Billing address: _____

☐ I/We authorize Temple Shalom to debit my/our checking account.
ACH (Please attach and voided check) *

☐ I/We want to make a transfer of securities (e.g. stock) or transfer funds from an IRA
(Please contact Maxine Gould at 239-455-3030 or mgould@naplestemple.org)

☐ I/We will pay via credit card using the Temple's secure, online portal at
naplestemple.org/payment.php

Please return this form in the envelope provided by Wednesday, June 16, 2021.

Name(s): _____ Date: _____

Signature(s): _____

**Automatic credit card and ACH debit withdrawals are processed near the 15th of the month.*

NOTE: you may change your payment method at any time by contacting the Temple office at 239-455-3030

Thank you for your support of our One Family.

**All contributions to Temple Shalom are tax deductible
to the extent allowed by law.**

LEARN WITH US

For security purposes, we cannot publish Zoom meeting information here. Zoom meeting information is available at www.naplestemple.org on the Members page. Members must be logged in to their account to view this information.

SHABBAT MORNING TORAH STUDY

Saturday at 8:30am via Zoom

Please note the new start time!

Study the weekly Torah portion with the guidance of clergy. Text sheets will be shared via Zoom.

Learners of all levels are welcome.



Stories of Music returns for two sessions on Wednesday, July 21 at August 18 at 10:00am

July 21 - Jews, Jazz & Jewish Jazz - part 1

August 18 - Jews, Jazz & Jewish Jazz - part 2

Zoom link information, can be found on the Members page on the Temple Shalom website.

ISRAEL BOOK DISCUSSION GROUP

4th Monday of the month
11:00am via Zoom

Monday, June 28

"Hope Valley: A Novel"
by Haviva Ner-David

Monday, July 26

"New York 1, Tel Aviv 0"
by Shelly Oria



Contact Michael Rubner for Zoom link info
exfgomsu@aol.com



JEWISH YOGA



Wednesdays 10:30am - 11:30am
9 Sessions VIA ZOOM

Yoga teacher, Missy Balsam guides you through an all-levels, gentle yoga stretch session interwoven with Jewish spiritual teachings.

Open to all. No experience necessary. Join anytime.

Registration is required for this very popular class.

Click Here

Space is limited. Cost - \$54

LEARN WITH US

ONE SPARK AT A TIME

Jewish mystics say that when the world was created, it began in a perfect form. That perfection did not last, and the resulting tumult scattered sparks of Divine Holiness across the world. Our task, our sacred obligation, is to collect these shard by shard, spark by spark, as we do the work of repairing our world, one good deed at a time. We are also taught to look for the Divine Spark within each person.

During the pandemic, when we all needed to be uplifted, Rabbi Miller began a series of interviews called “One Spark at a Time.” In each episode, he interviews an individual doing the work of making our world more whole and holy. He talks with them about what inspires them to make the world better, the work itself, and the journey they are on. You will find inspiration from their passion and dedication. Guests include both local and national figures. Rabbi Miller concludes each interview with a quote from Gandhi, “Be the change you want to see in the world.”



The sessions, which are live webinars, give members of our congregation a chance to be in the virtual audience and to add their own questions. The sessions are recorded, and a podcast is created from the audio track.

In July, Rabbi Miller will begin another series of “One Spark at a Time” interviews. You will meet amazing individuals who are improving the world each day. Watch your email for further information.

If you missed some of the One Spark at a Time interviews, listen to the podcasts to hear Rabbi Miller talking with such inspirational guests as:

- Abigail Pogrebin - Stories that Inspire
- Jessica Stanfield and The Guardian ad Litem Foundation
- Rabbi Joel Mosbacher – Do Not Stand Idly By
- Maya Weinstein on Sexual and Domestic Violence
- Evan T aylor – The Pursuit of Racial Justice

Visit: www.tinyurl.com/onesparkatatime

LEARN WITH US

FALL ENROLLMENT NOW OPEN!

WWW.TEMPLESHALOMPRESCHOOLNAPLES.ORG



VPK Class
OPENING
Fall 2021!



Your child deserves
the **BEST!**

Creative Learning
Outstanding Education
Nurturing Environment

**Music - Art - Storyland
Science - Technology -
Fitness & Yoga - Playground
Outdoor Classroom - VPK**

For more information or to
schedule a tour:
239-455-3227
preschool@naplestemple.org

Temple Shalom Preschool
4630 Pine Ridge Road
Naples, FL 34119



TEMPLE SHALOM PRESCHOOL
4630 PINE RIDGE ROAD
NAPLES, FL 34119
239-455-3227

SEVEN WEEKS OF FUN & LEARNING FOR CHILDREN AGES 1 - 4!

FULL DAYS • HALF DAYS • EXTENDED DAYS
BEFORE CARE • AFTER CARE



THEMED WEEKS
WATER PLAY
DANCING
ARTS
CRAFTS
STEM ACTIVITIES
SCIENCE
MUSIC
AND MORE!

CAMP BEGINS
JUNE 7



ISRAEL CORNER



MOUNT OF OLIVES By Andy Karpman

The Mount of Olives in Jerusalem, sometimes also referred to as Mount Olives, is an important landmark, located next to the Old City of Jerusalem.

The Mount of Olives refers to the ridge located east of the Old City and gets its name from the olive groves that at one time covered the land. A significant and meaningful landmark, the Mount of Olives in Jerusalem dates back to biblical times and is important to both Jews and Christians.

Today, the Mount of Olives is used as a Jewish cemetery and has been for over 3,000 years, it holds some 150,000 graves. In fact, the Mount of Olives has been used as a burial location for Jews since biblical times, including the burial location for some of the most prominent biblical kings.

When the Second Temple was destroyed, the Jews used the Mount of Olives as a celebratory site for the holiday of Sukkot, and many other religious ceremonies and celebrations prior to the destruction of the temple. The mount was also a site for religious Jews making pilgrimages, as it is located above the Temple Mount, and offers one of the best views to do this day. In 1948, after the Arab-Israeli War, an agreement was signed between Jordan and Israel to establish access to the Mount of Olives. There was a 19-year annexation, where Jordan was in control of the area, and most Israelis were not permitted to enter Jordan, and therefore unable to visit the Mount of Olives.

During this time, when the Jordanians ruled the area, some 38,000 graves were destroyed, and the area was developed with roads which also destroyed many burial locations. It wasn't until the Six-Day War in 1967 when the land went back to the Israelis and a series of efforts were made to restore the land, and the cemetery became functional for burials again.

Today, the Mount of Olives offers one of the best views of Jerusalem and is visited by both locals and tourists alike.



CONNECT WITH US

Welcome to our New Members

LARRY & SHELLEY COLLINS
JERRY & COOKIE HOBERMAN
STEVE & JACKIE MIRON
BRAIN RATZAN



CALL SAUL

YOUR PERSONAL DRIVER ^{NAPLES, FL}

For ALL Your Transportation Needs!

DISCOUNTS AVAILABLE
CALL FOR DETAILS

• COMFORTABLE • AFFORDABLE • ON TIME

OUR RIDE SERVICES

- Local & Long Distance
- Airports & Cruise Lines
- Dr. Appointments
- Shopping, Errands, Dining with Friends
- Serving Naples & ALL Florida Destinations
- Sedans, Limos, SUV's, Buses
- Driver Assistance Available
- Multiple Stops/Waiting OK

INTRODUCING SENIOR RIDE SERVICES

DEPENDABLE TRANSPORTATION
SERVICES FOR SENIORS!

CALL SAUL



Need A Ride?
CALL SAUL

239-777-2918

email: info@CallSaulYourPersonalDriver.com

OPEN AN ACCOUNT - SAVE TIME & MONEY! ASK US HOW!

Summertime & The Living is Easy



Tracey Albert
REALTOR®



ALBERT
REAL ESTATE TEAM
LIVE PARADISE. LIVE NAPLES.

PROUD TEMPLE SHALOM COMMUNITY MEMBER | PAST SISTERHOOD PRESIDENT
WOMAN OF VALOR RECIPIENT | PAST BOARD MEMBER FOR 9 YEARS

10% OF MY NET COMMISSION WILL BE DONATED
TO TEMPLE SHALOM IN YOUR HONOR.

239-572-8643 | Tracey@LiveParadiseLiveNaples.com | www.LiveParadiseLiveNaples.com

Downing-Frye Realty, INC. | 8950 Fontana Del Sol Way Suite 100, Naples, FL 34109, USA





TOGETHER WE THRIVE. Connection is key to a longer and more vibrant life, and powers everything WE do. It's like being part of a super supportive family of waiters, chefs, housekeepers, ZEST® activity coaches, care & wellness teams, and even a bunch of really friendly and fun neighbors, all helping you thrive. Experience *the Power of WE* at The Carlisle Naples senior living community.



Lunch & Learn | Thurs., June 17th • 11:30am

Join us for an informative presentation on senior living and the exceptional services & safeguards offered. Afterwards, take a tour and enjoy a delicious lunch. Seating is limited & socially distanced. To make a reservation, please call 239.444.6891.



6945 Carlisle Court • Naples, FL • **239.444.6891** • TheCarlisleNaples.com

CARF-ACCREDITED INDEPENDENT & ASSISTED LIVING RESIDENCES • ECC LICENSED

 EQUAL HOUSING OPPORTUNITY |   ASSISTED LIVING FACILITY #9408



DON'T MISS AN EMAIL FROM TEMPLE SHALOM!

Be sure to add info@naplestemple.org to your safe list and stay up to date on all our programs and special announcements.



YOU STILL HAVEN'T CREATED YOUR TEMPLE SHALOM ONLINE ACCOUNT?

Setting up your Temple Shalom online account allows you to access the membership database and see all of your personal information, pay your bills, see your yahrzeits, RSVP for events, register for YESh, classes and programs, make donations online, view the Membership Directory, access the calendar and many other features within the site.

Getting started is easy!

1. Go to www.naplestemple.org and click the Login button in the top right corner of the page.
2. Click forgot password and enter your email address where prompted.
3. You'll receive an email with a link and instructions for setting up your account.
4. Click the link and follow the on screen instructions to create your password

Contact info@naplestemple.org if you need assistance.



Bring Your Highest Expectations™
LUXURY PORTFOLIO
INTERNATIONAL

BUYING OR SELLING YOUR SOUTHWEST FLORIDA HOME?

Karyn and Rowan Samuel are a husband and wife real estate team and members of Temple Shalom.

We specialize in beachfront, waterfront and luxury homes in Southwest Florida.

Let us put our background, contacts and expertise to work for you!

The Samuel TEAM



The Samuel Team

Karyn Samuel
239.537.3732

Rowan Samuel
239.298.3555

www.lovingnaples.com

The Samuel Team will donate 10% of our net commission to Temple Shalom in your honor.

CELEBRATE WITH US

SIMCHAS



Join us in wishing mazel tov to Jerry Flagel who is celebrating not one, but three simchas! He has three grandsons graduating this month; one from the University of Georgia, one from Duke University Law School and one from high school.



Congratulations to Judy & Marty Isserlis as they celebrate their 50th anniversary on June 23.



Mazel tov to Lauren and Todd Brodie on the birth of their grandson, Noah Harrison Bernard. Noah was born on April 19.



Join us in wishing mazel tov to Carol and Burton Hirsch on the birth of their first grandson, Jacob Sherman Prizand. Jacob was born on May 1.



Congratulations to Neil Chessin on the birth of his granddaughter, Charli Olivia Harris.



Mazel tov to Robin and Andy Mintz on the birth of their first grandchild, Iris Faye Friedenthal, born on May 10.



Congratulations to Judy and Mel Zahn as they celebrate their 60th anniversary on June 20.

MAZEL TOV!

SHARE YOUR GOOD NEWS WITH US!

Engagements, weddings, awards, achievements, and milestones - we want to hear it all! If you have good news you would like to share with the Temple Shalom One Family, please let us know by emailing Jeanette Fischer at jfischer@naplestemple.org

CELEBRATE WITH US IN JUNE

Happy Birthday!

- | | | | |
|--------------------|-------------------|--------------------|----------------------|
| 1 Stacy Nicolau | 9 Sheryl Spielman | 15 Melissa Chalfin | 23 Robert Hayum |
| Suzanne Cohn | Stan Lipp | Brooke Druckman | Karen Ezrine |
| Bonnie Bodin | Howard Greenfield | Harriet Schweitzer | 24 Susan Silversmith |
| 2 Michael Marcotte | Jean Nacht | Edward Mitrani | Sharon Stoddard |
| 3 Peter Levi | Robert Gage | 16 Sandra Roth | Richard Rosen |
| Robert Davidson | Margareth Erlich | Micheline Peker | 25 Brian Dorn |
| Marc Simon | 10 Glenn Fischer | 17 Marilyn Dano | Joel Waltzer |
| Stephen Pino | Bernard Lublin | Charles Salup | Tearle Meyer |
| Wayne Press | 11 Paul Dorio | 18 Richard Crystal | 26 Jack Kaufman |
| 4 Elliot Miller | Michael Hoffman | Audrey Yett | 27 Mark Rubin |
| 5 Ellen Goldberg | Stephen Schwartz | 19 Edward Anchel | William Mitchell |
| Deenalil Caplan | Marcia Decker | Ronald Klein | Tina Haut |
| Philip Auerbach | Michael Horowitz | Kelsey Rubin | Shelly Berkle |
| 6 Donna Azu | Dan Isaacson | Martin Cohn | Mardelle Berman |
| Lynn Byerly | Carol Weisberg | 20 Paul Moskowitz | Susan Flato |
| 7 Richard Endlar | Gail Smith | Harold Mendlowitz | Cindy Cohen |
| Eugene Jacobs | Harvey Brenner | Sharon Castro | Lisa Katz |
| Merrylee Kandel | 12 Edward Kaufman | 21 Stephen Saks | 28 George Rubin |
| Michael Wexler | Sandra Zucker | Amanda Grant | Barbara Myers |
| Edwin Colodny | 13 Wilbur Rudman | Rabbi Adam Miller | Adrienne Charak |
| 8 Theodore Brother | Harold Lauber | 22 Joan Saperstein | Lisa Willits |
| Ellen Wollman | 14 Karen David | Jody Levy | 29 Joshua Buckman |
| Elizabeth Starman | Irene Smith | Karen Sloane | Curtis Treiser |
| Howard Zack | Janet Sherman | 23 Mark Schloss | Annette Blass |
| Andy Korn | | Lin Klein | 30 Harris Yett |
| Neil Sklaroff | | | Robin Secouler |
| Susan Horowitz | | | Gregory Hinchliffe |
| Myron Freedman | | | Amy Bentow |



CELEBRATE WITH US IN JULY

Happy Birthday!

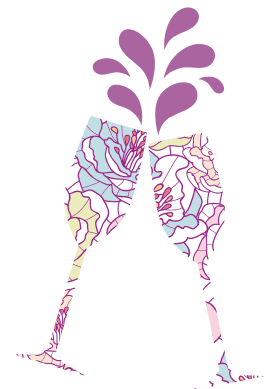
- | | | | |
|--------------------|-----------------------|-----------------------|----------------------|
| 1 Debra LaFevers | 7 David Rutstein | 15 Paul Kagan | 23 Barbara Halmos |
| Sharon Deutch | Marsha Goldstein | Melinda Levine | 24 Melvyn Poplock |
| Judy Barker | Reesa Yarkin | Robert Stein | Arthur Gillingham |
| Corrine Merksamer | Gary Dworkin | Shelley Einhorn | 25 Doris Adlestein |
| 2 Nancy Hurwitz | Ellaine Rosen | 16 Barbara Ross | Ted Goldberg |
| Richard Prosten | Laurie Cowan Phillips | Richard Goldblatt | Richard Mair |
| Paul Rosofsky | 8 Elizabeth Feldman | Alan Peltz | Michael Zion |
| Deborah Greenberg | Charles Center | Myra Friedman | Ellen Garnick |
| 3 Michael Sobol | Rabbi Ariel Boxman | 17 Elizabeth Wilker | Leonard Cutler |
| John Siegal | David Millstein | William Baker | Michele Spector |
| Anne Rubin | 9 Richard Treiser | Jeri Hall | 26 Leslie Feldman |
| Fred Rosenfeld | Howard Stacker | Rita Sibrack | 27 Barbara Rosenbach |
| 4 Sheila Becker | 10 Bob Kliman | Rhona Kalkstein | 28 Patricia Gage |
| 5 Stella Stacker | Ronald Pearlman | 18 Diana Goldstein | Ivan Carcamo |
| Judith Picus | David Blum | Jeffrey Albin | Jonathan Karnilow |
| Tracey Roth | 11 Amanda Ross | Carl Steinhouse | Ulyana Tunis |
| Geraldine Glueck | Marc Fleischer | 19 Sandra Broadman | Adrienne Block |
| 6 Rhonda Brazina | 12 Joel Aronson | Kenneth Anchor | James Knafo |
| Joyce Brown | Wendy Grossman | Jane Berger | Peter Cristall |
| Melvyn Zahn | Myra Cristall | Lucia Kohn | 29 Larry Israelite |
| Lori Siegel | Susan Bookbinder | 20 Yolany Carcamo | Cheryl Feinberg |
| Joshua Garfield | 13 Florence Levin | 21 Heidi Brem-Kargman | Fara Singer |
| Merrill Hassenfeld | Barbara Steinberg | 22 Linda Russell | Lori Kleiman |
| 7 Terri Polacheck | Jeffrey Margolis | George Kaplan | 30 Frederick Brown |
| Carol Hirsch | Barbi Mendlowitz | 23 Bobbie Katz | Jacob Lieb |
| Linda Denning | 14 Eileen Miller | Paul Sladick | Sarah Temple |
| | | | Michael Rainen |
| | | | 31 Gerald Flagel |



CELEBRATE WITH US IN JUNE

Happy Anniversary!

- | | | | |
|--|--|--|---|
| 1 Fred & Margo Rosenfeld
Samuel & Ann Varsano
Steven & Shelley Einhorn | 14 Philip & Marilyn Dano
Ralph & Bonnie Mandell
Jeffrey & Ida Margolis
Jeffrey & Judy Morton
Ronald & Hedy Pearlman
Neil & Tussy Shnider
Sheldon & Elizabeth Starman
Richard & Joan Toder | 21 Gabriel & Elizabeth Feldman
Jesse & Renee Fritz
Richard & Susan Sokolik
Howard & Janet Solot
Jerome & Linda Wainick
Scott & Hetty Weinstein | 26 Paul & Amanda Dorio
Ira & Barbara Kushnir
Barry & Surelle Wind |
| 2 Ted & Keren Alpert | | | 27 Samuel & Barbara Chester
Mark & Susan Sherwin |
| 3 Bennett & Mardelle Berman
David & Tracy Ornstein | | | 28 Ramon & Melissa Gonzalez |
| 4 Mark & Cheryl Feinberg
Robert & Debbie Statfeld | | | 29 Harold & Linda Bogatz
Howard & Barbara Glicken
Lawrence & Reesa Yarkin |
| 5 Jon & Corrine Merksamer | 15 Kenneth & Felicia Anchor
Earl & Wendy Gurevitch
Stephen & Melanie Schwartz | 22 Leonard & Jean Nacht
David & Carol Wolfe
James & Ellen Kahn | 30 Michael & Carol Levy
Joel & Susan Pittelman
James & Millie Sernovitz |
| 6 David & Eloyse Fisher
Ronald & Arline Kaplan
Jack & Nancy Wiadro | 16 Edward & Marla Cohen
Martin & Gayle Dorio
Howard & Gail Lanznar
Jane & Rabbi Jim Perman | 23 Jack & Alice Gish
Martin & Judythe Isserlis
Stuart & Judy Kaplan
Richard & Ellaine Rosen
Daniel & Roberta Sussman
Steven & Jacquelyn Miron | |
| 7 Ronald & Kathy Emanuel
Robert & Amy Hunter
Michael & Ann Goldblatt | 17 Les & Carol Appel
Arthur & Susan Sissman | 24 Ted Goldberg & Jeri Hall
Merrill Hassenfeld & Paula Brody
Michael & Lisa Kohan
Mark & Blanche Speiser
Martin & Joan Holzinger
Dimitry & Nan Roytberg | |
| 8 Michael & Arlene Sobol | 18 Dan & Linda Abrams
Neil & Judy Cohen
Norman & Rona Senior
Fred & Muriel Rosenfeld
Paul Kagan & Nancy Suslov
Spencer & Louise Forman | 25 Theodore & Nancy Brother
Randi & William Barr
Marc & Joan Saperstein
Charles & Lori Siegel
Melvin & Gail Ufberg | |
| 9 Michael & Deborah Greenberg
Andy Korn & Lori Kleiman
Merlin & Harriet Lickhalter | | | |
| 10 Richard & Sara Treiser | | | |
| 11 Ronald & Ronna Hain
Bernard & Bobbie Lublin
Brian & Beth Wolff | | | |
| 12 Lawrence & Lois Cohen
Robert & Barbara Levine
Jacob & Rochelle Lieb | 19 Walter & Eleanor Angoff
Monte & Janet Rosen | | |
| 13 Sidney & Sandra Diamond
Edward & Lisa Mitrani | 20 Leonard Kane & Helene Naimon
James & Eileen Miller
Melvyn & Judith Zahn | | |
| 22 Larry & Rhona Kalkstein | 21 Howard & Sheila Agranat | | |



CELEBRATE WITH US IN JULY

Happy Anniversary!

- | | |
|---|---|
| 1 David & Stacy Braverman
Eric & Jean Peltz | 13 Jeffrey & Jessie Goebel
Paul Rubin & Michelle Sodini-Rubin |
| 2 Joel & Wendy Grossman
Ronald & Caren Plotkin
Stuart & Harriet Schweitzer
Stephen & Deborah Schreier | 14 Tearle & Nancy Meyer
15 Harold & Barbi Mendlowitz
16 Ronald & Geraldine Gale
Howard & Rachel Gutman
Jesse & Bonnie Karen |
| 3 Leonard & Barbara Cutler
Neil & Stephanie Heuer | 17 Debbe & Danny Schertzer
19 Hank & Diane Schwartz |
| 4 David & Fredda Isaacson
Robert & Anne Newman
Franklin & Jacque Lynn Paulson
Angelo & Elizabeth Pirrone
Fredric & Sandra Roth
Wilbur & RosaLee Rudman | 20 Arnold Philip & Jacqueline Sherman
22 Denise & Mark Scappaticcio
23 Ronald & Sherrill Yasbin
Jay & Mona Brodsky
26 Mark & Cynthia Nusbaum
27 Albert & Robin Amar
Mark & Leslie Wasserman |
| 7 Lawrence & Jennifer Sandler
8 Jeff & Debby Waranch
9 David & Rena Rutstein
Larry & Linda DuKatz | 30 Henri & Micheline Pekar
Maxwell & Jessica Press
Allen & Marla Weiss |
| 11 Gerald & Natalie Lewis
12 Edward & Cheryl Alexander
William & Caroline Schulhof | 31 Marc & Maria Browner
Sheryl & Lee Spielman |



YAHREZEITS – JUNE 2021

- | | | | |
|---|--|--|---|
| <p>4 William Abrams
Abraham Berman
Patricia Blume
Gerald Bonder
Marvin Brody
Celie Chassin
Marjorie Cohen
Albert Corn
Harold Fischer
Alfred Geronemus
Anna Gish
Irwin Goldberg
Burton D Goldblatt
Jeanette Green
Seymour Gutman
Yetta Horowitz
Miriam Justa
Mary Ann Kamman
Harry Kaplan
Bruce Kassalow
Emma Kosage
Hilda Kuperman
Marvin Lansat
Leo Alex Levin
Carole Ann Martin
Albert Meyer
Beatrice Peilte
Fanya Prizent
Shirley Schloss
Eugene Sebulsky
Jean Sebulsky
Arlene Stam Sherman
Arlene Sherman
Aileen Sherman
Lilyan Siegal
Stan Simon
Michael Stein
Lillian Treiser
Helen Warshauer
Meyer Warshauer
Sarah Weisberg
Betty Wolf
Charles Yedid</p> | <p>11 Leonard S. Alpert
Ann Bernstein
Kenneth Boyd
Roberta Conversano
Rose Dezen
Jacques Elbhar, MD
Saul Freeman
Benjamin Friedman
Stella Gale
Colin Gould
David Greenfield
David Grossman
Elizabeth (Betty) Hager
Stuart Hyman
Florence Irma Hyman
Ida D Jaffe
Marvin Jaffe
Dorothy Josephson
Herman Josephson
Adam Kofman
Mary Kopolow
Doris Gertrude Levy
Diane Ocker
Herbert Pastor
Joseph Pino
Susan Reich
Sylvia Richter
Michael M Ross
Alice Schneider
S. Julia Sherman
Deborah Nelson Shimer
Richard Silver
Bluma Frishkoff Stillman
David Swartz
Donna Teitelbaum
Anna Treiser
Harry Whitcup
Morris Wichter
Sherman Winthrop
Morris Yaschik</p> | <p>18 Frances Abramson
Joel Bernstein
Rochelle Binder
Dr. Jacob S. Blumenthal
Charles Chervitz
Helen Ciorciari
Sidney Cohen
Gerald Cohn
Nathan Cutler
Bertha Haas Freedman
Judith Glassman
Bill Goldber
Dorothy H. Gordon
Abraham Graev
Marilyn Hendel
Sidney Herbst
Florence Hyman
Dorothy Jurgrau
Harry Kaplan
Rose Katz
June Kravin
Patty Lynn Lansat Polack
Alex Lashinsky
Mae Levere
Myer Lewis
Linda Libman
Beatrice Lipsitz
Brian Liss
Henry E. Mayer
David Merlin
George Moskowitz
Ben Novy
Viola Riefberg
Tillie Wilkes Rosen
Rosalie Ross
Eva Edith Rubner
Richard Schulhof
Edward Shifren
Saul Spil
Bessie Swartz
Susan M. Warshauer
John A. Werhane
M. Richard Wyman</p> | <p>25 John Anderson
Sophie Bassewitz
Philip Battaglia
Constance Block
Lya Minecha Brandwynne
Jason Clark
Toby Cohen
Edward J. Cohen
Lillian Cohen
Georges Elbhar, MD
David Elkin
Irving Faye
Dorothy Feiman
Thomas Fleckner
Aaron Goldenblatt
Larry Gordon
Gustav Hayum
Maryan Hittleman
Daniel Horowitz
Helen Krichman
Louis Levin
Irwin Levy
Frances Lichterman
Alfred D. Low
Rose A. Magy
Marie Maniscalco
William Meyer
Steven Miller
Jere Lynn Miller
Rose Raizes
Samuel Ringelheim
Adolf Rosenblatt
David Rosenfeld
Harold Rosenzweig
Beverly Rothstein
Jacob Sabbag
Shirley Schwartz
Joseph Shapiro
Gertrude Sherwin
Phyllis Silberg
Kenneth Solarsh
Hugh Stone
Frances Wachtel
Joseph S. Weinfeld
Joseph Wilker
Samuel Yett
Morris Zack</p> |
|---|--|--|---|

May their memories be a blessing.
Zichronam liv'rachah.

YAHREZEITS – JULY 2021

- | | | | |
|---|---|---|---|
| <p>2 Helene Y. Albert
Frances Barolsky
Sarah Bassin
Bessi Bernstein
Deborah Binder
Bonnie Bowdach
Ruth Brav
Leah Cohen
Anthony Cornacchia
Allen George Evans
Shirley Feinstein
Sidney Finkel
Nathan Fischer
Paul Galbut
Arthur Gilman
Charles Gilman
Jack Glass
Irving Goldenson
Henry Goldstein
Andrew Hudyma
Mari Hudyma
Allan Hyde
Sarah Indictor
Alan Karlsberg
Bessie Katchman
Herman Kaufman
Glover Kittinger
William E. Klein
Ida Kohler
Selma Krassen
Jack Levine
Tillie Levine
Sharon Levitsky
William Meltzer
Mary Nathan
Mildred Nazer
Albert Pearl
Evelyn Phillips
Robert Rabin
Milton Rosenthal
Jack Ross
S. Bernard Ross
Shirley Rubin
Anita Schertzer
Gertrude Sherwin
Deborah Shimer
Helen Shooman
Charlotte Sobelman</p> | <p>2 Ida Unger
Rosa Unger
Juli B. Wasserman
Jules Weinberg
Iris Weisberg
Jack Weiss
Olive Werhane
Irving Wolinsky
Walter Yusen
9 Dr. Harold Abel
Sylvia Alpert-Cohen-Bernstein
Edward Barolsky
Pearl Baseman
Marga Blumenthal
Maurice Chalfin
Samuel Chosiad
Kathryn Cohan
Tania Dubiecki
Albert DuKatz
Carol Feder
Joyce Feldstein
Ruth Fisher
Lorraine Fredanus van Gelder
Rose Gail
Marjorie Wasserman Gross
Ralph Heyman
Elizabeth R. Jacobs, PhD
Max Kahn
Arlene S. Klein
Robert Knoll
Alfred Kraus
Victoria Lerner
Anna Luff
Susie Marx
Edward Minzner
Leo Morrison
Helen Nori
Dorothy Pammer
Aileen Pierce
Buddy Poston
Adolph Rosen
Milored Rosenfeld
Dora Rothman
Lediscia Sabbag
Irma Schwarzkoff
Sydona Senior
Duwid Szrajbman
Robert Walter</p> | <p>9 Frank Weisberg
Herman Weiss
Herbert Winkler
Sarah Yarkin
Dorothy Zelman
16 Melvin Aizenshtat
Bertha Anchor
Fred Bert Block
Elizabeth Cohn
Arnold Cotton
Sara Cowan
Larry Cowan
Sam Freschel
Sylvia Garon
Robert Getzoff
Harriet Grandis
Mindel Grossman
William Hager
Elliot Herman
Lillian Hyman
Malke Jaffe
Edith Kaplan
Gertrude Kaplan
Allan S. Kaye
Owen Kilgannon
Marvin Kline
Ruth Landy
Stephen M. Lemler
Marvin Levey
Michelle Lewis
Anna Liberman
Dr. Paul D. Meyer
L Frank Neiderman
Drew Novy
Ella Oshry
David Pendergast
Philip Press
Lloyd Rauch
Matilda Raskin Rosen
Sam Rosenbloom
Jeanette Saval
Emanuel Schwartz
Abraham Schwartz
Ruth Mackoff Shapiro
Rita Shore
Estelle Silverman
Nathan Starman
Leslie Statfeld</p> | <p>16 Anna Sway
Louis Teitelbaum
Ruth Tenenbaum
Joseph Wolf
23 Ned Laurence Brody
Barbara Browner
Madeline S. Cole
Samuel Ellis
Harry Freschel
Ida Friedman
Anna Goodman
Sarah Green
Louis Greenbaum
Gertrude Hassenfeld
Natalee Hendler
Abraham Kauffman
Arlene Gordon Kessler
Abraham Knofsky
Mitchell Lester
Andrew Seth Levine
Golda B. Levine
Wendy Karlsberg Meltzer
Jerry W. Miller
Naomi Miller
Sally Portman
Irene Rifkin
Dorothy Rubinwitch
Irving Schwartz
Harry Schweitzer
Harold Seligman
Celia Sharfstein
Lillian Shifren
Herman D. Simon
Beatrice Sulzer
Albert Turkel
Max Wachtel
Saul Waldman
Louis Weinberger
Nat H. Yamron
30 Anne Ackerman
Gabriel Albala
Gloria Averbach
Anita Axelrod
Sara Bassewitz
Laura Blinder
Robert Block
Alise Blum
I. Boskowitz</p> |
|---|---|---|---|

YAHREZEITS – JULY 2021

30 Ruth Brahm
Sara Brown
Rebecca Chalfin
Jack L. Derzavis
Mildred Druckman
Marina Erlich
Sophie Flato
Niel Fredanus van Gelder
Jack Freeman
Lorraine Glassman
Nellie Goldberg
William Goldstein
Louis Goold
Fay Gordon
Ruth Gurowitz
Ruth Rubenstein Hacker
Rikki Hillman
Stephen Hyman
Harold Kanter
Yetta Katz
Oscar Kohler
Irene Koplin Cohn
Sylvia Kronish
Harriet K. Lussan
Mary Macpherson
Bennie A. Magy
Theodore Marotti
Harold Meltzer
Ella Mintzer
Carl Mirowitz
Betty Pactovis
Israel Plax
Rose Porter
Albert Conrad Raab
Phyllis Rosenfield
Ester Rebecca Ruthman
Bertha Schmitzer
Lee Silverman
Cheryl Sue Strober
Ann Treiser
Carmen Vasquez
Samuel Volo
John F. Woog

RECENTLY DECEASED

(As of 5/26/2021)

Edward Boxman – Grandfather of Rabbi Ariel Boxman

Elliot George Hardman – Cousin of Rachel Cohen

Stewart Levine – Friend to many of our congregants

Richard Rubin – Widower of Barbara Rubin and brother-in-law of Sandy Stone

Sandford Sirkus – Widower of Louise Sirkus

Sophie Myrun – Aunt of Andy Karpman

Wes Jend – Friend of Tina and Larry Haut

Andrew Halmos – Husband of Barbara Halmos

Mordechai Wiesler – Husband of Michal Wiesler

Trudy Levine – Wife of Sam Levine

Dr. Michael Cook

May their memories be a blessing.
Zichronam liv'rachah.

MEN'S CLUB



MEN'S CLUB
President

Ron Yasbin

I actually sat down to write this month's letter while listening to the Director of the CDC make the announcement about lifting many of the mask requirements. Like all of you, I look forward to a return to our normal life or whatever the "new normal" will be.

During the pandemic, the Men's Club has had to curtail some of our activities and functions. We are determined to emerge this coming year as bigger, better and more relevant. Despite the curtailment, we have remained committed to supporting the Temple Shalom family with a special emphasis on YESh, the schools and our youth. I know that we can all agree that our youth are the future, especially of Jewish life in America.

Please remember to re-join the Men's Club for the coming year so we can continue our work. A printable membership form can be found [HERE](#). In addition, we are always looking for ideas and new events that will benefit the congregation and the community. Please let me know of your suggestions and thoughts.

Wishing you all a healthy summer and a return to non-Zoomed events.

L'Shalom,
Ron



SISTERHOOD



SISTERHOOD
PRESIDENT

Congratulations to Karen Cohn for serving as Sisterhood President during the past two years. She did a terrific job navigating the challenging year of Covid. Under her leadership we continued to meet on Zoom and enjoy a variety of programs. As the new Sisterhood President I am looking forward to returning to the Temple for meetings, luncheons and fundraisers.

I am originally from Philadelphia, where I taught elementary school in the inner city. After several years I moved to Lebanon, PA, with my husband where he began his medical practice and we raised our three sons. When we moved to Bonita Springs in 2003, we joined Temple Shalom. My son Eric, his wife Brooke and their son and daughter moved to Naples in 2012.

They are members of Temple Shalom and their children, Carter and Abby, attend Hebrew School. My other two sons live in Pennsylvania with their families.

Barbara Druckman

The Board has already been busy planning events for the coming year. Once again we are offering "Honey from the Heart" to welcome the New Year. What a wonderful gift for family, friends and business associates! One of our members has already ordered 50 jars.

Wouldn't it be wonderful if all our members participated? We hope everyone will do their part to support Sisterhood. Make sure you have your orders in by July 7, for free shipping. Keep in mind that this fundraiser will help Sisterhood reach its goal of \$15,000 for YESh (formerly known as Religious School).

Mark your calendars for the following events:

January 11 **Mah Jong Tournament** Chaired by Robin Mintz

March 8 **Fashion Show** Fashions by Petunia's. Chaired by Natalie Berman

April 5 **Canasta Tournament** Come with your partner, men included.

Click [HERE](#) for a
2021-2022 Sisterhood
Membership Form

Our Sisterhood Book Bag is chaired by Nancy Suslov and will be on Zoom the third Thursday of the month at 1:30pm. In the future Nancy plans to have participation in the Temple as well as on Zoom. Enjoy these excellent books and join the group for lively discussions. For more information, contact Nancy at nisuslov@gmail.com.



May 20 "The Time Traveler's Wife" by Audrey Niffenegger *Facilitated by Nancy Suslov*

June 17 "Book of Lost Friends" by Lisa Wingate
Facilitated by Gale Lazarus and Millie Sernovitz

July 15 "Weight of Ink" by Rachel Kadish
Facilitated by Marti Gross

September 23 "The Painted Veil" by W.Somerset Maugham
Facilitated by Linda Wainick

October 21 "How Ike Led: The Principles Behind Eisenhower's Biggest Decisions" by Susan Eisenhower
Facilitated by Sue Center

November 18 "The Stationary Shop" by Marjan Kamali
Facilitated by Lynn Prosten

December 16 "Strangers" by Anita Brookner
Facilitated by Carol Clarke

January 20, 2022 "All the Rivers" by Dorit Rabinyan

February 17 Jewish Book Festival Sisterhood Selection

March 17 "The Book of Lost Names" by Kristin Harmel
Facilitated by Ellen Garnick

April 21 "Lady Clementine" by Heather Terrell
Facilitated by Sue Center



Honey from the Heart FUNDRAISER

This special 8-ounce jar of kosher honey will arrive in time for Rosh Hashanah, accompanied by a personalized card reading:

"Shana Tova — Wishing you a Healthy and Happy New Year"

This card also lets recipients know that a donation has been made in their honor to Temple Shalom Sisterhood. Your cost is **\$15.00 per jar**, and includes shipping within the United States on **orders placed by Wednesday, July 7.***

ORDER YOUR HONEY TODAY!



(You'll need your credit card and the addresses of your recipients.)

**ORDER BY
WEDNESDAY, JULY 7**
to avoid a \$5.50 per jar shipping fee.

Order by FRIDAY, AUGUST 6
for Rosh Hashanah Delivery.

*** Additional Shipping Charges for orders outside the United States:**
Add \$25 for Canada
\$35 for other countries

**Profits from the
Honey Sale support
Temple Shalom
YESh (Youth Engagement
at Shalom) and other
Sisterhood programs
and projects.**

If you don't have internet access or if you prefer to pay by check, call or email Fran Nossen.
She will place the order for you upon receipt of both your check and ordering information.

For more
information,
please contact



Chairperson: Fran Nossen
Phone: 239-591-3956
E-mail: robandfran@aol.com

**ONLINE ORDERING
greatly appreciated!**

PORTRAITS IN CHARCOAL

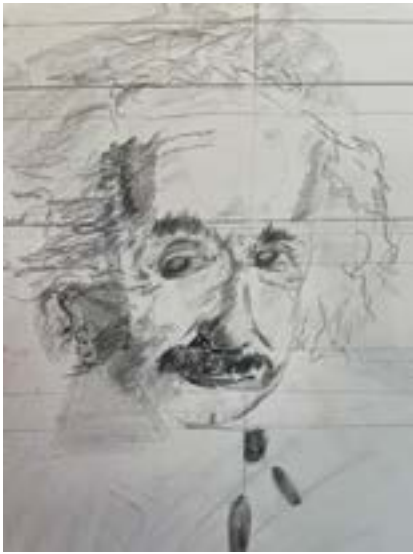
Einstein is widely known for his Theory of Relativity and his contribution to Quantum Mechanics. But many of his admirers are not aware of his latest claim to fame –the Sisterhood’s Portrait Drawing class.

This past March the Temple Shalom Sisterhood offered Nancy Suslov’s charcoal portrait drawing class. The goal: creating a portrait of the famous Dr. Albert Einstein. The class ran for three two-hour sessions and introduced students to the basic elements of drawing, as well as design, anatomy, perspective, and a little art history. Some students started out with little or no art experience. Nevertheless all were able to complete beautiful portraits of Einstein. “I am very proud of their work. I think they did marvelously.”

But, why Einstein? “He is certainly worthy of a portrait,” Nancy responded. “He was a brilliant physicist. He was also a humanist and defender of human rights. He wrote extensively about art and creativity,” replied Nancy. “In addition, I found a great photograph of him – one that revealed his intellect and humor - perfect for inspiring budding portrait artists.”



Einstein by Jane Galler

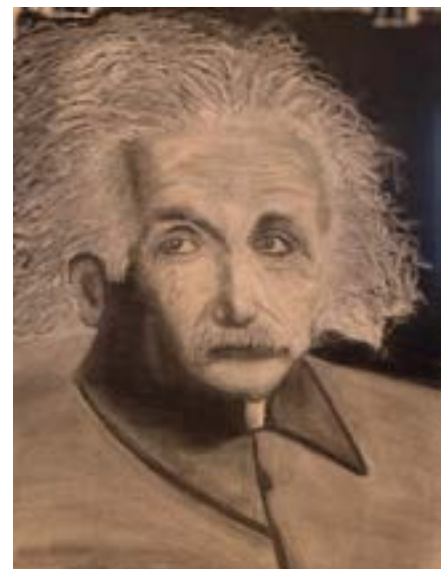


Einstein by Eleanor Angoff

Nancy is a local artist and member of the Temple Shalom Sisterhood Board of Directors. Teaching portraiture started when a neighbor proclaimed that she could never be an artist because she couldn’t even draw a straight line. “Not being able to draw a straight line is a good thing,” responded Nancy. “Most great artists never use straight lines. When was the last time you saw a straight line in the Mona Lisa?” She then challenged her neighbor to a class in portraiture. The rest is history. Over the past year Nancy has run a number of portrait classes via Zoom. She has also taught classes on artistic decision-making. “Many of the students surprise themselves. They never believed they could draw, much less create a great portrait with a strong likeness,” reported Nancy.

see the portrait subject, [as well as] measurements, shapes, shadowing and highlights. Nancy’s patience and encouragement helped me create a portrait that I can be proud of.”

All of this is music to an art teacher’s ears – or should we just simply say, “It’s all relative.”



Einstein by Judy Ciorciari

TIKKUN OLAM COUNCIL CHAIR

Don Belmont



As the incoming chairman of the Tikkun Olam Council, I first want to thank Ken Goldstein for his leadership of the committee for the past several years, and the huge personal commitment he has made to *tikkun olam* efforts at Temple Shalom. *Yasher koach*, Ken. Strong work.

When I told a few Temple Shalom friends that I was going to be the new chair of the TOC, I was met with blank stares.

Me: “You know – the Tikkun Olam Council.”

Friends: “Huh?”

Me: “The Social Action Committee.”

Friends: “Oh – that’s great We’re happy to help you out. Let us know what we can do ”

So, it seems that it’s time to re-introduce the Tikkun Olam Council. In many other congregations, we are known as the Social Action Committee. But the concept of *tikkun olam* goes further than that. A broader definition of *tikkun olam* includes not just social action, but also concepts of social justice and advocacy.

- Social action generally refers to direct activity projects such as Mitzvah Day, collection drives, and education programs about current issues.
- The concept of social justice is less specific, and refers more to the bringing of Jewish values and ethics to the public arena. This is the idea behind the ‘Golden Rule’ of treating others as we would like to be treated, with equal dignity and value.
- Advocacy is the active encouragement of applying Jewish values to the large number of overwhelming issues which confront our society.
- Social action is collecting food for the food bank. Advocacy seeks to change policy so that the causes of food insecurity are eliminated. These are all parts of *tikkun olam*.

As Reform Jews, *tikkun olam* (repairing the world) is not just something we do, but it is central to who we are. We recognize that we live in an imperfect world and are obligated to try to repair it. At Temple Shalom, the efforts of *tikkun olam* are spearheaded by the Tikkun Olam Council (TOC).

The Tikkun Olam Council currently runs a wide variety of activities at Temple Shalom, the best known of which are Mitzvah Day, food drives, and clothing collections. But, did you know that we are also involved with a couple dozen other projects during the year? Among these is the knitting of shawls for women recovering from breast cancer surgery, providing supplies for the Shelter for Abused Women and Children, collecting sneakers and school supplies for kids in Collier and Lee Counties, encouraging voter participation, creating beaded jewelry for the Guadalupe Center in Immokalee, and organizing some of the educational programming at the Temple, among several other projects.

We have a highly involved group of members at Temple Shalom, attempting to heal the cracks in our broken world. In coming the months, I’ll be highlighting some of our TOC projects and the Temple Shalom congregants who are driving them forward. But, I’m only aware of some of what our congregants are involved with. I would love to know what other *tikkun olam* efforts are underway within our Temple family – the TOC can perhaps assist with publicizing your area of work and recruiting help to your cause. So, please share your *tikkun olam* interest with me. Or come to our TOC meetings. We currently meet monthly on Zoom, so please contact me if you want to join us, and help us turn our faith into action!

L’Shalom,
Don Belmont
DJBelmont@gmail.com

TZEDAKAH

SHOWING WE CARE

Contributions to Temple Shalom funds are wonderful ways to show your appreciation of family and friends, to celebrate happy occasions and to honor the memories of loved ones. We suggest a minimum donation of chai (\$18.00). With a minimum donation of chai, a notice of your gift will be sent to the honoree and mention will be published in The Voice.

OPERATIONS FUNDS

GENERAL FUND

Support Temple operations

CAPITAL RESERVE

Maintain and enhance buildings and grounds

SECURITY FUND

Improve safety and security

TREE OF LIFE

'Leaves', 'Rocks' and 'Stars of David' dedication opportunities are available.

TRIBUTE GARDEN

Enhance garden, buildings and grounds. Dedication opportunities are available.

WORSHIP FUNDS

MEMORIAL FUND

Donations in memory of loved ones

WILLIAM FRESCHEL KIDDUSH FUND

Provides Kiddush lunch each Saturday following worship services. A \$250 donation sponsors Kiddush in honor of a special someone or occasion.

FLOWER FUND

Bimah flowers each Shabbat. A \$150.00 donation sponsors flowers in memory or in honor of a special someone or occasion

MITZVAH BASKETS FUND

Bimah food baskets for Shabbat. A \$100 donation purchases several hundred dollars of food for The Senior Center at JFCS.

DR. PHILIP & SHIRLEY GILBERT

MUSIC FUND

Enhances music at Temple Shalom

PRAYERBOOK FUND

Prayer books and Torah commentaries. Prayer books - \$54, Torah commentary - \$100 High Holy Days prayer books (set) - \$108

STUART & ESTELLE PRICE A/V FUND

For the purpose of enhancing, improving and maintaining Temple Shalom's livestreaming capabilities

EDUCATION FUNDS

ADULT EDUCATION FUND

Enhances adult education programs

RELIGIOUS SCHOOL FUND

Supplies and activities for Jewish learning

RELIGIOUS SCHOOL ENRICHMENT FUND

Augments educational programming

PERRY L. SWITZEN EDUCATIONAL FUND

Religious School scholarships for

POLSTER RELIGIOUS SCHOOL

SCHOLARSHIP FUND

Religious School scholarships

BEN CALMENSEN FUND

Sponsors children to attend Camp Coleman

JOSEPH S. WEINFELD FACULTY

DEVELOPMENT FUND

Enrichment activities for Religious School teachers

YOUTH ACTIVITIES FUND

Financial assistance for our youth to attend Camp Coleman, regional/ national youth conventions, and Israel summer experiences.

PRESCHOOL FUND

Supplies and activities for the Preschool

PRESCHOOL ENRICHMENT FUND

Special programs in Preschool

ARBY LIPMAN CHILDREN'S LIBRARY

For the purchase of books, magazines subscriptions and supplies

JACK AND CHARLOTTE WARD

FAMILY CHILDREN'S MUSIC SHELF

Audio and video music for children

ARTIST-IN-RESIDENCE FUND

To bring visiting musical artists to the Temple as an educational benefit to the membership

LIBRARY FUND

RABBI JAMES & JANE PERMAN LIBRARY

Books, magazine subscriptions and supplies

SOCIAL ACTION FUND

DAVID AND LILLIAN THALENFELD FUND FOR SOCIAL JUSTICE

Supports Temple's participation in social justice events and activities

ONEG SHABBAT FUND

Sponsors Onegs in celebration of an event or to honor someone. This fund is administered by Temple Shalom Sisterhood. Please contact Sandy Stone (239) 597-1553.

ENDOWMENT FUNDS

GENERAL ENDOWMENT

Secures the future, enriches programs and provides for emergency needs of the congregation

HERBERT & RUTH

ABRAMSON ENDOWMENT

Supplements general operations and provides enrichment for Temple functions

HONEY BERKLE ENDOWMENT

Supports overall mission of Temple Shalom

PAULA BRODY & MERRILL

HASSENFELD ENDOWMENT

Supports operating and capital expenses

KRAUS SCHOLAR-IN-RESIDENCE

ENDOWMENT

Brings visiting scholars to the Temple as an educational benefit to the membership

GRACIA & MERRILL KULLER FAMILY FUND

Supports the overall mission of Temple Shalom

LOW FAMILY ENDOWMENT

Secures the future of Temple Shalom and Reform Judaism in Southwest Florida

TEMPLE SHALOM SISTERHOOD

ENDOWMENT FUND

Supports the religious school

TRULY NOLEN FAMILY ENDOWMENT

Supports the overall mission of Temple Shalom

JANET & HOWARD SOLOT LEADERSHIP

DEVELOPMENT PROGRAM ENDOWMENT FUND

To recruit and train future leaders of Temple Shalom

SAKS FAMILY FOUNDATION ENDOWMENT FUND

CLERGY & LEADERSHIP FUNDS

RABBI MILLER'S DISCRETIONARY FUND

For tzedakah, charitable purposes, and general enhancement of the Rabbi's work

CANTOR AZU'S DISCRETIONARY FUND

For tzedakah, charitable purposes and general enhancement of the Cantor's work

RABBI BOXMAN'S DISCRETIONARY FUND

For tzedakah, charitable purposes, and general enhancement of the Rabbi's work.

LEADERSHIP FUND

Enhances and enriches leadership programs at Temple Shalom

CANTOR AZU DISCRETIONARY FUND

In Appreciation Of

Cantor for a wonderful, extraordinary experience from Anonymous

In Memory Of

Abraham Weiss from Jay & Susan Weiss

Janet Moskowitz from Jeffrey & Ida Margolis

Linda Libman from Robyn Deering

DR. PHILIP & SHIRLEY GILBERT MUSIC FUND

In Memory Of

Abraham Berman from Bennett & Mardelle Berman

Roz Citrin from Lydia Bond

Dr. Georges Elbhar and Dr. Jacques Elbhar from Lydia Bond

ENDOWMENT FUND

In Honor Of

Carol and Burton Hirsh on the birth of their grandson from Gene & Bobbie Katz

IN MEMORY OF

Richard Rubin from David & Daryl Sissman

ESTELLE & STUART PRICE AUDIO VISUAL FUND

In Honor Of

Luke Deering's Bar Mitzvah from Robyn Deering

GENERAL FUND

IN APPRECIATION OF

Neil Shnider from Fred & Barbara Gruninger

IN HONOR OF

James and Ellen Kahn from Debbie Zvibleman

Jody Levy from Debbie Zvibleman

The Bat Mitzvah of granddaughter, Ella from Lanie and Marty Samuels

IN MEMORY OF

Harry Peltz & Elaine Hammer from Alan & Freddi Peltz

Larry Gordon and Marvin Brody from Alan & Helene Gordon

Gerald David Sherman and Arlene Stam Sherman from Anonymous

Judith Malakoff from David Malakoff & Carol Swartz

David Grossman from Debby & Jeff Waranch

Marvin Kline, Lew Jaffa and Zelda Jaffa from Frances Kline

Myron Symons from Gale Lazarus

Ruth Hepner from Harriet Adelstein

Herb Gordon from Howard and Sheila Agranat

Anna Gish from Jack & Alice Gish

Lillian Pam from Karen & Jerry Pam

Hannah Arotzky from Marilyn Ross

Ann Schwalb and Marjorie Joy Segal Lutz from Phyllis Luts

Rosalee Bogo's brother, Sam, from Robert & Pris Siskin

Sanford Sirkus from Ronald & Hedy Pearlman

Kenny Silverblatt from Terri Polacheck

With Prayers for a Speedy Recovery

to Tom Newkirk from H. Jeannie Abels

GRACIA & MERRILL KULLER FAMILY FUND

In Memory Of

MB Kuller and Louise Kuller from Gracia Kuller

MEMORIAL FUND

In Memory Of

Herb Gordon from Jeffrey & Sandy Randall

Stuart Levine from Carol & Marv Weisberg

Harry Pearson from Ellie Cantor

Robert Bacharach from Stephen Bacharach

Joseph Pino from Steve & Sherry Pino

MITZVAH DAY DONATIONS

In Honor Of

The birth of Charli Olivia Harris from Neil A. Chessin

PRESCHOOL DONATIONS

In Honor Of

The birth of my great-grandson, Ezra Nelson Kleymeyer from Geraldine Glueck

PRESCHOOL ENRICHMENT FUND

IN MEMORY OF

William Cohen, Jenni Cohen and Colin Gould from Maxine B. Gould

RABBI BOXMAN'S DISCRETIONARY FUND

In Memory Of

Edward Boxman from Jeanette & Glenn Fischer

David Elkin from Sherrill & Ron Yasbin

RABBI JAMES & JANE PERMAN LIBRARY FUND

IN APPRECIATION OF

your help with Emmy's Bat Mitzvah from Leonard & Barbara Cutler

IN MEMORY OF

Leonard Berliss from David & Cary Goodman

Joseph Reiss from Liz & Alan Jaffe

With Prayers for a Speedy Recovery

to Rabbi Jim Perman from David & Eloyse Fisher

to Rabbi Jim Perman from Ellie Cantor

to Rabbi Jim Perman from Karen & Stan Deutsch

RABBI MILLER'S DISCRETIONARY FUND

IN APPRECIATION OF

Officiating at their wedding from Benjamin Fleischer & Shannon Taylor
Daryl Sissman, thank you for the thoughtful birthday wishes from Laura Subin

MiShebeirach for Daniel Miller from Leonard & Barbara Cutler

MiShebeirach for Allison Perlis from Leonard & Barbara Cutler

Officiating at father's funeral from Michael & Simone Marks

IN MEMORY OF

Edward W. Schwab from Avra Schwab

Barry Shurak from Ellen Shurak Goldstein

Irving Goldberg from Jerome & Linda Wainick

Barry Shurak from Joyce Rylander

Helen Krichman from Linda Bluhm

Jules J. Sherman from Linda G. Simon

Viola Riefberg from Mae Riefberg

Steve Heller and Sandy Sirkus from Malcolm & Paula Milsten

Jean and Eugene Sebulsky from Millie & Jim Sernovitz

Aboud Levy from Moises & Janina Levy

Continued

RABBI MILLER'S DISCRETIONARY FUND (cont.)

IN MEMORY OF

Alfred Reinhardt from Paul & Joyce Moskowitz

Barbara Rubin and Richard Rubin from Robert Michael & Nancy Hurwitz

Other

Mazal Tov to Burton and Carol Hirsch on the birth of their first grandson from Janet Schwarz & family

SECURITY FUND

IN MEMORY OF

Camille Sklaroff from Neil Sklaroff



WWW.STROHLLAW.COM

239.793.7999

2315 Stanford Court

Suite 302

Naples, FL 34112



TAMMY STROHL, P.A.

PERSONAL INJURY ATTORNEY SERVING NAPLES FOR 25 YEARS



Our
referral
services are
100% FREE

**Let Us,
Help You!**

**Senior Housing
SOLUTIONS®**

239.595.0207

seniorhousingsolutions.net

*Certain conditions apply. Please contact
us for more information.*

**Honest, caring and knowledgeable advice
about assisted living options ... AT NO COST TO YOU.**

With over 30 years of experience, we help eliminate the guesswork in choosing the right senior living community that meets your needs and preferences. We look beyond the fancy décor and evaluate facilities on:

- Quality of care and services
- Health care violations
- Financial viability
- Resident satisfaction
- Operational stability
- Overall lifestyle

Proudly serving Collier and Lee counties since 2008, we pride ourselves in being familiar with all the options in the area and the pros/cons of each.

Let us use our expertise to help find the right 'solution' for you!



Bruce B. Rosenblatt, Owner
Senior Housing Expert
Naples Daily News Columnist



*You deserve the care of a
Real Estate Specialist.*



Past President & Temple Member Since 1998.
10% of my net commission will be
donated to Temple Shalom in your honor.

Deborah Zvibleman, PA
ABR, AHWD, CIPS, CLHMS, PMN, RSPS, SRES, SFR, TRC
DZvibleman@johnrwood.com
239.272.8878
DebbieSellsYourHome4You.com



June 2021

Sunday	Monday	Tuesday	Wednesday	Thursday	Friday	Saturday
		1	2	3	4 "Pre-neg" 5:30pm Shabbat evening service 6:00pm	5 Torah Study 8:30am Shabbat morning service 10:00am Havdalah 7:30pm
6	7	8 Sisterhood Board meeting 11:00am	9 Jewish Yoga 10:30am	10	11 "Pre-neg" 5:30pm Shabbat evening service 6:00pm	12 Torah Study 8:30am Shabbat morning service 10:00am Havdalah 7:30pm
13	14	15 Executive Committee meeting 7:30pm	16 Jewish Yoga 10:30am	17 Sisterhood Book Bag 1:30pm	18 "Pre-neg" 5:30pm Shabbat evening service 6:00pm	19 Torah Study 8:30am Shabbat morning service 10:00am Havdalah 7:30pm
20	21	22 Board Meeting 7:30pm	23 Jewish Yoga 10:30am TOC meeting 1:30pm	24	25 "Pre-neg" 5:30pm Shabbat evening service 6:00pm	26 Torah Study 8:30am Shabbat morning service 10:00am Havdalah 7:30pm
257	28 Israel Book Discussion Group 11:00am	29	30 Jewish Yoga 10:30am			

Please be sure to check your email for additional programming, links and schedule changes.
Friday and Saturday Shabbat worship are both in-person and virtual.
*All other programs and events are virtual unless indicated with an *.*

July 2021

Sunday	Monday	Tuesday	Wednesday	Thursday	Friday	Saturday
				1	2 "Pre-neg" 5:30pm Shabbat evening service 6:00pm	3 Torah Study 8:30am Shabbat morning service 10:00am Havdalah 7:30pm
4 Independence Day	5 Temple Shalom office and Preschool Closed	6 Sisterhood Board meeting 11:00am	7	8	9 "Pre-neg" 5:30pm Shabbat evening service 6:00pm	10 Torah Study 8:30am Shabbat morning service 10:00am Havdalah 7:30pm
11	12	13	14	15 Sisterhood Book Bag 1:30pm*	16 "Pre-neg" 5:30pm Shabbat evening service 6:00pm	17 Torah Study 8:30am Shabbat morning service 10:00am Havdalah 7:30pm
18	19	20	21 Stories of Music 10:00am TOC meeting 1:30pm	22	23 "Pre-neg" 5:30pm Shabbat evening service 6:00pm	24 Torah Study 8:30am Shabbat morning service 10:00am Havdalah 7:30pm
25	26 Israel Book Discussion Group 11:00am	27	28	29	30 "Pre-neg" 5:30pm Shabbat evening service 6:00pm	31 Torah Study 8:30am Shabbat morning service 10:00am Havdalah 7:30pm

Please be sure to check your email for additional programming, links and schedule changes.
*Friday and Saturday Shabbat worship are both in-person and virtual.
 All other programs and events are virtual unless indicated with an *.*



4630 Pine Ridge Road
Naples, Florida 34119

Non-Profit Org

U.S. Postage

PAID

Naples, FL

Permit No. 127