

THE VOICE

Temple  Shalom

VOLUME XLII | TEVET/SHEVAT 5782 | NUMBER 6



JANUARY 2022

Happy New Year!

Temple Shalom

One family, many connections

4630 Pine Ridge Road

Naples, FL 34119

Phone: (239) 455-3030 • Fax: (239) 455-4361

www.naplestemple.org

info@naplestemple.org

Education Office: (239) 455-2233 • Preschool Office: (239) 455-3227

STAFF

ADMINISTRATIVE & CLERGY ASSISTANT

Randi Butterworth

rbutterworth@naplestemple.org

MUSIC DIRECTOR

Dr. James Cochran

MAINTENANCE TECHNICIAN

Pedro Cruz

maintenance@naplestemple.org

DIRECTOR OF COMMUNICATIONS

Jeanette Fischer

jfischer@naplestemple.org

PRESCHOOL ADMIN. ASSISTANT

Julie Fischer

preschool@naplestemple.org

EDUCATION ADMIN. ASSISTANT

Mary Flores

education@naplestemple.org

DIRECTOR OF MARKETING

Esther Garfield

egarfield@naplestemple.org

GROUNDSCKEEPER

Rick Holsbeke

maintenance@naplestemple.org

FACILITY MANAGER

Victor Lucas

vlucas@naplestemple.org

EDUCATION ADMIN. ASSISTANT

Paolette Matute

pmatute@naplestemple.org

ADMINISTRATIVE ASSISTANT

Michele Rubin

mrubin@naplestemple.org

CLERGY

SENIOR RABBI

Adam F. Miller

amiller@naplestemple.org

CANTOR

Donna Azu

dazu@naplestemple.org

DIR. OF LIFELONG LEARNING

Rabbi Ariel Boxman

aboxman@naplestemple.org

RABBI EMERITUS

James H. Perman, D.D.

rabbi@naples.net

PROFESSIONAL STAFF

EXECUTIVE DIRECTOR

Deborah R. Fidel

dfidel@naplestemple.org

MISSION STATEMENT

Temple Shalom of Naples is an inclusive Reform Jewish congregation where all individuals are equal partners in making our world whole and holy. We are One Family, believing in the sacredness of relationships, fostering connections – one to another, Temple, Israel, Torah and God. We are living Jewish values and nurturing future generations.

The Voice is published monthly.

June/July are combined issues.

Editor - Jeanette Fischer

BOARD OF TRUSTEES

PRESIDENT

Daryl Sissman

FIRST VICE PRESIDENT

Ed Kaufman

SECOND VICE PRESIDENT

Merrill Hassenfeld

THIRD VICE PRESIDENT

Leonard Teitelbaum

TREASURER

Susan Ritter

FINANCIAL SECRETARY

Steve Pino

RECORDING SECRETARY

Robin Mintz

SISTERHOOD PRESIDENT

Barbara Druckman

MEN'S CLUB PRESIDENT

Ron Yasbin

TEMPLE HISTORIAN

Howard Glickin

Ed Alexander

The Honorable Kyle Cohen

Joshua Garfield

Ellen Goldberg

Susan Hager

Andy Karpman

Bobbie Katz

Stacy Nicolau

Jack Rabin

Estelle Price



A Proud Member of the URJ

CLERGY & LEADERSHIP MESSAGE

Dear One Family:

A new calendar year is upon us - a time for renewal, new opportunities, and aspirations for a better year ahead. While we seek to start 2022 on a good note, we are cognizant of the reality in which we live. The challenges we hoped to leave behind in 2021, remain ever present. Our leadership has been watching Omicron cases and consulting with our COVID Task Force to continue to allow our community to connect meaningfully and safely. You will find important updates to our protocols and events on the calendar and other information in our email correspondence and on the website.

We understand that this is an exhausting emotional rollercoaster. The past is gone, but not forgotten. The news of cancellations, rising cases, and changes in safety protocols brings back memories of what we have had to overcome, but know that we are in a different place now than we were a year ago. Most of us have been immunized, giving us layers of protection that appear, even now, to be preventing severe illness and hospitalization. Many feel less vulnerable than they did at the start of 2021.

This new reality poses its own challenge, as people around us now begin to make their own individual decisions about how to manage the risks we face. Some continue to travel and eat out, while others may be hunkering down. Some have returned to wearing a mask in all settings, while others feel comfortable without one in settings where it is not required. Some choose now to attend services, classes and events virtually, while others are content to be in-person.

Whatever the choices you make, know that you are doing the best that you can. As our Sages wisely point out, we are not expected to be like Moses, Abraham, Sarah, or Miriam, we are only expected to be the best version of ourselves. These are uncertain times, when we are all making difficult choices. You are making the best decisions you know how to make. And others are too. We are all just trying to figure this out. Be kind, patient and understanding with yourself and others around you.


We remain hopeful that gam zeh ya'avov, this difficult period too shall pass. The choice is in our hands for the tone that we will set and the way that we engage with one another. May this new secular year be one of hope, light and blessing for us all.


L'shalom,


Rabbi Adam Miller


Cantor Donna Azu


Rabbi Ariel Boxman


Debroah Fidel, Executive Director


Daryl Sissman, Temple President



CLERGY MESSAGE



Director of Lifelong Learning
Rabbi Ariel Boxman

At Temple Shalom Preschool we spend a lot of time learning about other cultures, religions and practices.

In the month of January, we dedicate an entire week to learning about other countries and their cultural customs and traditions. During this week, each class is assigned a specific country to focus on. The students read books about the country, try the cuisine, make costumes and learn cultural songs and dances. At the end of the week, the students participate in an Around the World Parade in which parents are invited to watch each class parade in front of the school in their costumes.

This week is one of my absolute favorites. Both students and teachers have the opportunity to learn something new and increase their appreciation for different customs and traditions from around the world. This year students have chosen to learn about England, Israel, Italy, Ecuador and Columbia.

We invite you to join us for the Around the World outdoor parade on Friday, January 28 at 1:30pm. We will enjoy music, food and of course, watching the cutest kiddos in the world parading in costume!

Enjoy some pictures from last year's Around the World parade.

Italy



Hawaii



Scotland



LEADERSHIP MESSAGE

President
Daryl Sissman



Happy New Year!

As I have emphasized in prior articles about the creation and execution of the Strategic Plan, it is very important to me that we create a robust leadership development program at Temple Shalom. Without lay leaders who give their time and energy to implementing the goals of the plan, it will be of limited value. Therefore, it gives me great pride to announce that the Solot Leadership Development Program will be initiated in early 2022.

The Solot Leadership Program is a six-part series that will give participants some insight into how the Temple is run, and how they can help build on Temple's successes for the future. Topics will include relational Judaism and how it guides our One Family, how to be both a Jewish Leader and a leader at Temple Shalom, the structure of Temple Shalom and the Strategic Plan. We are looking for people who are already committed to Temple and those who want to learn more. We welcome everyone who wants to ensure that we continue fulfilling our mission and building our Jewish home at Temple Shalom. Whether you have been a member for decades or you are brand new to Temple – if you think you might have anything to offer as a lay leader, please join us.

Speaking of leadership, I am thrilled to introduce the newest member of the Temple Executive Committee. Len Teitelbaum has joined the Board of Trustees as the Third Vice President. He has been a member of Temple Shalom for 15 years and he brings a wealth of professional and Jewish experience to the position. Len is the current chair of the URJ Pension Board and was president of his synagogue in New Jersey. He previously ran the Endowment and Investment committee at the URJ and is an honorary board member there. Len was a Managing Director at Merrill Lynch. We are very lucky to have him on board.

Every president leaves his or her mark on the congregation; I hope that mine will be a robust pipeline of future committee chairs, auxiliary presidents, Board members and presidents! With the inception of the Solot Leadership Program and the addition of Len Teitelbaum to the Executive Committee, I think we are headed in a great direction!



WORSHIP WITH US



Soulful Shabbat

January 14 at 7:30pm

A service conducted in song & accompanied by a professional band.



Beach Shabbat

January 21 at 5:00pm

Lowdermilk Park

BRING A BEACH CHAIR



Shabbat Worship

Friday evenings

7:30pm

Saturday mornings

10:00am

WE ASK THAT ALL IN-PERSON ATTENDEES
BE FULLY VACCINATED (IF ELIGIBLE)

MASKS ARE REQUIRED FOR EVERYONE
AGE 5 AND OLDER.



**You can also join
us online!**

**LIVESTREAM &
FACEBOOK LIVE**

Find the livestream at
naplestemple.org/media

or

Facebook

facebook.com/templeshalomnaplesfl

A Noteworthy Night

New Date

Mark your calendars!

March 27, 2022

AT TEMPLE SHALOM



5:00pm VIP Cocktail Reception
6:15pm Showtime!
Followed by dessert

Two performers, two pianos,
and an unforgettable night!

Event Chairs

ROBIN & ANDY MINTZ

Honoring

CHERYL & ED ALEXANDER

DR. PAULA BRODY & MERRILL HASSENFELD

BEBE & STEVE SAKS

Event Committee

RACHEL COHEN &
THE HONORABLE KYLE COHEN
BARBARA DRUCKMAN
ESTHER & JOSHUA GARFIELD
BARBARA & HOWARD GLICKEN
ELLEN & STEVEN GOLDBERG
CAROL & BURTON HIRSCH

ROSIE HYMAN
BOBBIE & GENE KATZ
JAMES KNAFO
JANE & RABBI JIM PERMAN
STEVE & SHERRY PINO
SUSAN & JOEL PITTELMAN
ESTELLE & STUART PRICE

JUDIT & RICHARD PRICE
SUSAN & JACK RABIN
SUSAN & NATHANIEL RITTER
ARLENE & DON SHAPIRO
DARYL & DAVID SISSMAN
JANET & HOWARD SOLOT
JUDI & DAN SPINTMAN

KIDS KORNER

Shabbat ShaPLAY

Saturday, January 15
10:00am - 11:30am
Sea Gate Park

Join Rabbi Boxman & Miss Jane as we sing, dance, play and celebrate Shabbat in the park!

All young families are invited to attend. Temple Shalom membership not required!

RSVP to
education@naplestemple.org



9:00 am - 11:00 am

SESSIONS

January 23
February 13
March 6
April 24



For parents and their little ones (2-4 year olds). Through crafts, play, yoga, music and fun, kids will learn about Judaism in a hands-on and experiential way.

CONTACT 239-455-2233 OR
EDUCATION@NAPLESTEMPLE.ORG
TO REGISTER

WWW.TEMPLESHALOMPRESCHOOLNAPLES.ORG



Temple
Shalom
Preschool

LOVE THE LEARNING, LIVE THE VALUES



Your child deserves
the **BEST!**

Creative Learning
Outstanding Education
Nurturing Environment

**Music - Art - Storyland
Science - Technology
Gymnastics - Playground
Outdoor Classroom - VPK
Baby & Me**

For more information or to
schedule a tour:
239-455-3227
preschool@naplestemple.org

Temple Shalom Preschool
4630 Pine Ridge Road
Naples, FL 34119



TEMPLE SHALOM PRESCHOOL

BABY & ME

MONDAYS AND FRIDAYS
9:00AM-11:30AM

MONDAY ONLY- \$130/MONTH
FRIDAY ONLY- \$130/MONTH
MONDAY & FRIDAY- \$200/MONTH

MUSIC - DANCE - STORIES- SHABBAT
BAKING - YOGA
SENSORY PLAY - GARDENING

WWW.TEMPLESHALOMPRESCHOOLNAPLES.ORG

NEW MEMBERS



Michael & Tracy Askotzky

Myra Hackel

Scott & Dana Jaffe

Dana & Paul Lefkowitz

Michael & Terri David

Terri David has been married to her husband, Michael for 40 years. They are both psychologists who specialized in working with children, particularly in schools, after having earned their Ph.D.'s in that area in the 1980's.

Terri was born and raised in Queens, New York City, while Michael came from Brooklyn, yet they did not meet until they were both working in Cranford, New Jersey. After their 1981 marriage, they completed their degrees and moved to North Brunswick and then Princeton, NJ, while working in school districts. Terri was the psychologist in the West Windsor-Plainsboro Community Middle School. They retired about 15 years ago, then discovered and moved to Naples in 2014. They return to New Jersey every summer.

Both are avid fans of reading, walking, Mah Jongg and many of the activities offered in the wonderful community, such as the Women's Cultural Alliance and the Naples Council of World Affairs.

David Fleisher & Melissa Krantz

Melissa Krantz and David Fleisher have been married 43 years. While they have lived most of their married life in Westchester County, New York, and have owned their house in Bonita Springs for 20 years, they only decided this year to spend the majority of the winter in Florida.

David grew up in Poughkeepsie, New York, where his family were active members of Temple Beth El, a prominent Conservative congregation. He attended SUNY Purchase where he and Melissa met, and they graduated in 1976. David went on to graduate from Brooklyn Law School in 1979 and has been engaged in a successful real estate law practice.

Melissa was born in Orange County, and grew up in Monroe, New York; Fargo, North Dakota; Greensburg, Pennsylvania and Rockland County, New York where her father, a Reform rabbi, held positions at various congregations and chaplaincies. Melissa has been engaged in public relations and corporate communication at agencies, corporations and in her own firms and continues to have an active consulting practice.

Family is the focal part of their life. They have two daughters; Jenny Fishman, who is married to Russell Fishman, and they have two children, Harrison Fishman and Gemma Fishman, and Sara Simon, who is married to Mitchell Simon, and they have two children, Theodore "Teddy" Simon and Oliver "Ollie" Simon.

Happy Tu B'Shevat

Plant for tomorrow... Create a Jewish legacy today. Have you planted seeds for the future? Consider a gift through your will or estate plan to benefit Temple Shalom's Endowment Fund.

*What seeds will
you plant?*

Contact Deborah Fidel,
Executive Director
(239) 455-3030
dfidel@naplestemple.org

Temple  Shalom
One family, many connections



SRG
SENIOR
LIVING



A team. A family. An assist with everything that matters. *That's the Power of WE.*

Imagine life with a complete **support system**. It's like an extended family working together and making things easier. Meals, prescriptions, appointments, **personalized care**, even a hobby or two, all taken care of—with smiles at every turn. Having it all, and **an extra hand** when you need it. That's **Assisted Living** at The Carlisle Naples.

► Call 239.444.6891
to schedule your
personalized tour



6945 Carlisle Court • Naples, FL • 239.444.6891 • TheCarlisleNaples.com



CARF-ACCREDITED INDEPENDENT & ASSISTED LIVING RESIDENCES • ECC LICENSED



EQUAL HOUSING OPPORTUNITY



ASSISTED LIVING FACILITY #9408

Beach Shabbat - December 24



Temple Shalom President, Daryl Sissman and Bronia and Andrew Ichel.



Cantor Donna Azu and Membership Chair, Bobbie Katz.

Behind the scenes...

Main Restrooms



Thank you, Dr. Paula Brody and Merrill Hassenfeld, for making it possible to further beautify our building!

BBYO

Jessica Zimmerman

Regional Director, North Florida Region

Shalom Naples!

BBYO Naples has had another great month! We enjoyed our time at the Naples Community-wide Hanukkah Celebration on November 29. We hope you had a chance to stop by our table.



BBYO Naples hosted a special event in Temple Shalom's Tribute Garden on Sunday, December 12. Our community came together to celebrate ten years of BBYO in Naples at our Annual BBYO Community Celebration. Each year, we induct alumni from our community into the Leadership Hall of Fame. These alumni are chosen based on their dedication to BBYO locally, regionally and internationally. Not only do we induct alumni from BBYO Naples, but we also highlight one adult BBYO alum that is currently involved in BBYO Naples success and growth. This awardee does not need to be an alum from BBYO Naples. Due to Covid-19, our ceremony has been on hold for the past couple of years. We are grateful we were able to gather outside at Temple Shalom to celebrate the award recipients from 2019-2020 and 2021-2021. Our awardees include Adam Mitrani, Jacob Klein, Hannah Castro, and Dylan Saad. Our adult alumni recipients were Gary Kohler and Rabbi Adam Miller. We thank each of you again for your dedication and commitment to BBYO Naples.

This month, BBYO Naples is heading to Top Golf for our spring chapter kickoff. We hope you will consider joining us on Sunday, January 23. Be in touch with any questions or ideas! I can be reached by email at jesszimmerman@bbyo.org.

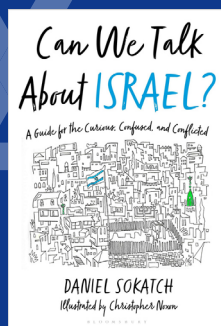
We can't wait for another term of fantastic events and programs.

ISRAEL BOOK DISCUSSION GROUP

4th Monday of the month
11:00am via **zoom**

Monday, January 24

"Can We Talk About Israel?"
by Daniel Sokatch



Contact Michael Rubner for Zoom link info
exfgomsu@aol.com

סיפורי מוסיקה STORIES OF MUSIC



"The Sounds of Eretz Israel in America: The Crucial 60's"

Parts 1 & 2

Wednesday, January 12 & February 16
10:00am via Zoom

Presented by Cantor Donna Azu

Explore how the music of Israel grew in the consciousness of American Jews and penetrated American culture generally.

LEARN WITH US

Jewish Wisdom for Everyday Life:

Dealing with Stress & Anxiety
in the Modern World

4 Session Course led by
Rabbinic Scholar, Rabbi Frank Muller

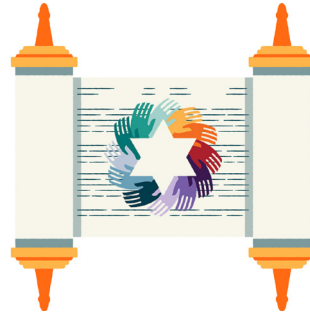
Mondays, January 3, 10, 24, and 31
(No class January 17)

12:30pm-1:30pm via Zoom

Judaism has specific remedies for coping with anxiety and stress in our daily lives based on centuries-old wisdom. There are salient concepts and teachings our religion offers which can be applied to the challenges and complexities of adult life.

Learn how to channel positive energy to deal more effectively with the stress and anxiety in our daily lives.

Zoom link can be found in the weekly email or contact the Adult Education office at education@naplestemple.org



SHABBAT MORNING TORAH STUDY

Saturdays at 8:30am
via Zoom

Study the weekly Torah portion with the guidance of clergy. Text sheets will be shared online.

Learners of all levels are welcome.

Zoom link can be found on the weekly email or contact education@naplestemple.org.



JEWISH YOGA

Mondays, beginning January 3

11:00am
VIA ZOOM



Yoga teacher, Missy Balsam guides you through an all-levels, gentle yoga stretch session interwoven with Jewish spiritual teachings.

Open to all.
No experience
necessary.
Join anytime.

Registration is required for this very popular class. Cost - \$54
Space is limited

LEARN WITH US

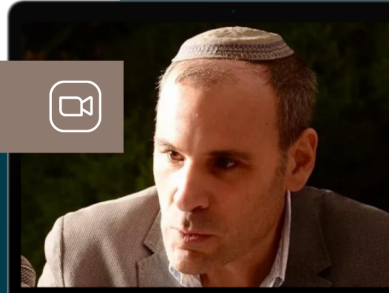
Temple  Shalom

Engaging the Disengaged: Reconnecting Teens and Young Adults to Israel

Why are so many youngsters in the USA disinterested in the land of Israel?

Rabbi Hammer will identify some of the features of this generation which lead to this predicament and explore what can be done to engage our youth with the Jewish Homeland.

JANUARY 20
7:30 PM ON ZOOM



WITH RABBI SHALOM HAMMER,
LECTURER FOR THE IDF

COLLIER COUNTY EDUCATOR AWARD "Stand Up For Justice"



Application Deadline: February 11, 2022

For the 12th year a grant has been established by the Jewish Community Relations Council of the Jewish Federation of Greater Naples.

The 2022 STAND UP FOR JUSTICE Educator Grant recognizes High School, Middle School and Elementary school educators who are innovative in bringing respect for others' differences into their activities with students in a transformative, impactful, and caring way. The goal is to create a resource for educators of any discipline to incorporate strategies that promote understanding and respect among students, countering bigotry and bullying. This grant recognizes teachers, guidance counselors, school librarians, media specialists, school psychologists, administrators etc.



Go to:

jewishnaples.org/outreach/educator-award

For additional information please contact:
Grant Coordinator, Beth Povlow
239-363-6306
marcopovlow@icloud.com



Jewish Federation
OF GREATER NAPLES

Wishing you and
your family a...

Happy New Year!



Tracey Albert

REALTOR®

Your Naples Specialist
(239) 572-8643

Naples Resident for
Over 33 Years

Tracey@LiveParadiseLiveNaples.com



Stay Connected



LIVEPARADISELIVENAPLES.COM

- Woman of Valor Recipient
- Past Board Member for 9 Years



- Proud Temple Shalom Community Member
- Past Sisterhood President

10%
Of my net commission
will be donated to Temple
Shalom in your honor.





ISRAEL CORNER

by Andy Karpman

Timna Park

Timna Park is located about 25km (about 17 miles) north of Eilat in Israel's Negev Desert. One of the largest attractions in the south of Israel, the park sits in a beautifully majestic desert setting.

It has amazing history and geology. There are also a number of unexpected activities including those on the lake (yes, a lake in the desert!). It covers about 15,000 acres in a horseshoe-shaped valley surrounded by steep cliffs, with Mount Timna, the world's first ever copper mine, standing tall in the center.

The ancient copper mines and mining shafts can be seen throughout the park. There are also remains of smelting furnaces dating back to ancient imperial Egypt. Copper was the first metal for creating work and household tools, weapons, costly ornaments and cultic objects. The importance of Timna in the ancient world was great. Multimedia displays tell the amazing history of the site, and visitors are engaged by dream-like stories of Egyptian goddesses and pharaohs.

Solomon's Pillars are towering sandstone columns. Perfectly formed, in fact, so perfectly formed that you might not believe that they are the work of nature. But they, as with the rest of the amazing geology and landscape of this park, are the work of nature alone. They're the result of strips of volcanic magma freezing into the cliffs. This scenery truly is the thing dreams are made of.



Looking for Educated Conversationalist for Healthy, but Isolated, Community Member in Pelican Bay

An active member of the Jewish community - an elderly but healthy and independent woman - interested in literature, art, politics, psychology and Judaism - is interested in finding someone to spend time with a couple of hours a day for a few days a week. There is no healthcare or daily-task care support involved. COVID has been isolating and we're looking for someone mostly to walk and talk with.

\$50/hr including travel time.

Please contact Gordon Lafer at
glafer@msn.com or 917-701-8042.



Managing one's finances can be hard, but you no longer have to do it alone. Naples Daily Money Manager can help.

- Bill Paying
- Document Organization
- Reconciliations
- Budgeting
- Banking
- Professional Collaborations



• BONDED AND INSURED •

239-300-7177 naplesdmm@gmail.com
www.naplesdmm.com

Temple Shalom Sisterhood *Judaica Shop*

The Only Judaica Shop in the
Greater Naples Area!



*Mezuzot, Jewelry, Candles
Tallit, Gifts, Cards AND MORE*

The Judaica Shop is open
by appointment ONLY.

Contact Amy Young at
973-919-2918 or younga321@aol.com

CALL SAUL YOUR PERSONAL DRIVER

NAPLES,
FL

For ALL Your Transportation Needs!

DISCOUNTS AVAILABLE
CALL FOR DETAILS

• COMFORTABLE • AFFORDABLE • ON TIME

OUR RIDE SERVICES

- Local & Long Distance
- Airports & Cruise Lines
- Dr. Appointments
- Shopping, Errands, Dining with Friends
- Serving Naples & ALL Florida Destinations
- Sedans, Limos, SUV's, Buses
- Driver Assistance Available
- Multiple Stops/Waiting OK

INTRODUCING SENIOR RIDE SERVICES

DEPENDABLE TRANSPORTATION
SERVICES FOR SENIORS!

CALL SAUL



**Need A Ride?
CALL SAUL**

239-777-2918

email: info@CallSaulYourPersonalDriver.com

OPEN AN ACCOUNT - SAVE TIME & MONEY! ASK US HOW!

CELEBRATE WITH US IN JANUARY

Birthdays

1	Gail Abelman	7	Gordon Kerner	16	Wendy Israelite	23	Howard Solot
	Laurie Bollt	8	Linda Abrams		Joan Friedman		Elizabeth Charif
	Jessica Horowitz		Ronald Hain		Dana Jaffe	24	Susan Solomon
	Rita Weiss		Max Kamerman		Gustavo Karp		Allan Goldberg
	Lester Friedberg		Bronia Ichel		Freddi Peltz		Nataly Goldshtein
	Donald Baseman	9	Carol Swartz	17	Paul Lefkowitz		Maureen Feinstein
2	Jacqueline Sherman		Ronald Meyer		Judith Kaufman		Gabriel Feldman
	Norman Cohn	10	Beth Wolff		Roberta Sussman		Nancy Thalheimer
	Claudia Baer		Barrett Brown		Cheryl Payne		Marsha Karp
	Shelly Whitman		Jean Wichter	18	Jeanette Fischer	25	Donald Kadonoff
3	Beverly Fried		Rochelle Lieb		Fabiana Kivilevic		Christopher Lundborg
4	Brett Rosenblum		Gerald Hoberman		Martin Samuels	26	David Braverman
	Gracia Kuller	11	Muriel Rosenfeld	19	Preston Zaehring	27	Michael Katz
5	Judith Zahn		Martin Isserlis		Charles Huizenga		Marcy Goldfield
	Karen Pam		Alan Adlestein		Leonard Schuman		Russell Smith
	Rena Rutstein		Samuel Chester	20	Judi Saddle		Ellen Harris
	Cheryl Ginsburg		Alan Johnson		Alan Gordon	28	Susan Adler
	Elaine Samuels	12	Simone Lutgert		David Silberg		Andrea London
6	Sandra Diamond		Steve Azu		Eloyse Fisher		Sylvia Heyman
	Stephen Blum		Debbie Statfeld		Missy Balsam	29	Alois Zanoni
	David Malakoff		Roberta Kauffman		Shelley Collins		Maxine Brenner
	Ronald Sidman	13	Andrea Press	21	Leslie Schwartz		Fern Jaffe
	Marc Rosenweig		Jean Morrison		Stanley Farb		Ira Broadman
	Larry Collins	14	Bruce Nichols		Ralph Mandell		Larry Kalkstein
	Carol Wolfe			22	Lety Schwartz	31	Michael Kohan
	Carol Clarke				Marcy Malc		Scott Jaffe
					Steve Regester		
					Katie Cohen		

Happy
Birthday
-to You-

CELEBRATE WITH US IN JANUARY

Anniversaries

- 2 Thomas & Barbara Carlstrom
- Ralph & Sylvia Heyman
- 6 Eric & Kathy Feinstein
- 8 Andrew & Fernanda Zahn
- 9 Robert & Leda Lubin
- 11 Eugene & Bobbie Katz
- 18 Stephen & Trudy Weisberg
- Michael Warfel & Helena Fishbein
- 19 Marvin & Helaine Lender
- 20 Steven & Beverly Koren
- Jack & Susan Rabin
- 22 Ronald & Lin Klein
- 23 Edward & Lori Cohen
- 26 Peter & Enid Levi
- 27 Allen & Lillian Menkin
- 28 Martin & Hilda Levine

*Happy
Anniversary!*

SIMCHAS

Join us in congratulating....

Jack and Nancy Wiadro on the engagement of their granddaughter, Chloe Wolfman to Sam Anis. Mazel tov also to Jack on his 80th birthday.

Lynn & Allen Danzig on the birth of their grandson, Levi Samuel Morris.

Jeanette & Glenn Fischer on the engagement of their son, Jared, to Mackenzie Kirk

Bob Hayum on the engagement of his grandson, Max Hayum, to his girlfriend, Graham Halperin

Paul Kagan & Nancy Suslov on the birth of their granddaughter, Rayla Felicity Leygan.

Ron & Sherrill Yasbin on the birth of the granddaughter, Mila Blake.

Donna and Curtis Treiser on the marriage of thier son, Adam to Gisselle Amador on December 18 in Miami.

Susan and Arthur Sissman and Daryl and David Sissman on the occasion of their granddaughter and niece, Orli, becoming a Bat Mitzvah this month.

Lori and Charles Siegel on the birth of their granddaughter, Sophie Jean Siegel.

Deborah and Bob Fidel on the engagement of their son, Noah, to Mila Schneider.

Ellaine and Richard Rosen on the engagement of their grandson, Noah, to Mila Schneider.

Share your good news with us!

Engagements, weddings, awards, achievements, new jobs and milestones - we want to hear it all!

If you have good news you would like to share with the Temple Shalom One Family, please let us know by emailing Jeanette Fischer at jfischer@naplestemple.org.



TAMMY STROHL, P.A.

PERSONAL INJURY ATTORNEY SERVING NAPLES FOR OVER 25 YEARS

ALL PERSONAL INJURY CASES TAKEN INCLUDING
AUTO, MOTORCYCLE, AND BICYCLE ACCIDENTS,
DOG BITES AND WRONGFUL DEATH.

Law Office of
Tammy Strohl, P.A.

WWW.STROHLLAW.COM

2315 Stanford Court, Suite 302
Naples, FL 34112



239.793.7999

YAHREZEITS – JANUARY 2022

7 Herbert Adler Eileen Berger Estelle Boyd Sylvia Brams Dylan Brukner Leo Budin Mildred Budin Dr. Hyman Burstein Doris E. Cohen Leonard Creskoff Mark Desser Alexander Feldblum Cornelia Feldman Joan Floegel Marcus Gold Estelle Gordon Joseph Guttenplan Jacob Paul Hertzman Harold Jacobs Natalie Justa Alan Kaplan Joseph B. Kaplan Morris Katz Philip King Gladys Kittinger Michael Kleiman Elliot Foster Krusch Nathaniel Liberman Emanuel Lorber Rosalie Lubin Judy Moskowitz Sadie Newman Nancy Nightingale Ruth Portman Thomas Portman Harriett Post John Robert Purdy Morris Rabinowitz Fannie Rabinowitz Lawrence Rosenblum Harry Rubinwitch Marvin G. Schaeffer	7 Michael Schwartz Raymond Schwarzkoff Louis Seltzer Allen Solomon Sally Sussman Dorothy Tapper Samuel Leonard Temple William Topp Dr. Max Ufberg Anne Watstein Leon Wernikoff 14 Joseph Angel Roslyn Baron Faye Beitchman Vladimir Bershadski Minnie Berzon Marilyn Birnhak Olga Bluestein Betty S. Brown Nathan Clibanoff Ann Danies William Diamondstein Ernest Druckman Bonnie Emory Nathan Feldman Eleanor Freiberg Jeffrey Aaron Gage Saul Garber Thelma "Terry" Geronemus Sidney Glasgow Helen Silverman Harrison Jennie Hasson Penny Horowitz Ann Jacobs Ida Koosman Bertha Rivin Lashinsky Grace Lebowitz Leonard A. Lewis Hilda Millstein Anna Palazzolo Anne C. Pirchesky Anna Plax	14 Sandy Rabinowitz Sperantza Roman Eleanor Rubinstein Minnette Ruchman Pauline Schmidt Michael Seaman Amanda Shore Ben Simon Rose Simon Robin Fisher Solis Nellie Stein Howard Teitelbaum Albert Tobias Herb Valinetz Fannie Warshauer Arthur Warshauer Betty Weiner 21 Sheldon Adler Jose Antonio Almeida Marcia Ardenfriend Burt Baron Eleanor Battaglia Bessie Bender Sidney Bernstein Eugene Borowitz Martin Casper Philip Ciorciari Estelle Cohen Mollie Cohen Reuben Cohen Emma Cohn Barbara Danies Spencer Samuel W. David Lois Endlar Howard Feldman Milton Garon Irving Glickin Bernice Glueck Anna Goldberg Ann Goldenson Ronald S. Gross	21 Minnie Gross Arthur Haut Irmagard Heil George Kahn Dora Kanter Joseph Koenig Philip Kreisler Kalmon Paul Lazear Roxanne Lebowich Larry Leventhal Herman Levine Louis Levine Steven Levy Louis Lipman Marian Ginsberg Loeb Ari Mazer Andee Millstein Irwin H. Mintz Irving L. Myers Mike Pearlman Herbert Meyer Pearlman Rhoda Pearlman Sadie Greenberg Pearson Betty Rosen Stanley Rubenstein Irving Sacknoff Harold Z. Sawyer Samuel Schneider Matthew Schwartz Ruthine Simon Herbert Solomon Lena Steinberg Alex Steinberg Janet Ehrenkranz Stoddard Paul Swartz Harry Tapper Gladys Warshauer Nathan Weiss Lillian Weiss-Goodgold Ethel Young Philip Zeldner
--	---	--	--

Continued

YAHREZEITS – JANUARY 2022

28 Sally Adlestein
Leon Albert
Sharon Ansteth
Milton E. Ashur
Linda Bell
Murray Binderman
Carolyn W. Bomeisler
Mary Boskowitz
Arnold Brodie
Joseph Browar
Isabelle Gup Brown
Sarah Gillerman Chervitz
Paul Corich
Irene Dorn
Betty Dreier
Joseph Ellis
Joel Feinson
Esther Feld
Margery Fireman
Menyhert Fogel
Albert Gale
Jack Greenberg
Joseph Greenberg
Gerald Grossman
Barbara Hamilton
Isadore Heller
Alvin William Hurvitz
Rose Kanter
Evelyn Kilberg

28 Ruth Kilman
Frieda Klein
Norma Jean Koeser
Julia Bender Kroot
Rose Leictman
Russell Leif
Sally Leventhal
Berniece Levin
Fay Lichtenstein
Pearl Meltzer Neiderman
Benjamin Nerenberg
Aaron A. Paulson
Meyer Pearlman
Shelli Rebecca Plotkin
Annie Quisefit Elbhar
Flora Reinhardt
Melvin Reiss
Mikhail Roytberg
Florence Zussman Sackett
David Siegel
George Simon
William M. Sloves
Dorothy Solomon
Wayne Spielman
Samuel Spintman
Amon Thall
Minnie Waldman
Ann Robin Williams
Elizabeth Zimmerman

RECENTLY DECEASED

(As of 01/03/2022)

Esther Tickton Katz - Mother of Mike Katz

David Jacobsen - Father of Robin Engelson

Lawrence Bennett - Brother-in-law of Dan Spintman

Jack Jacobsen - Husband of Hari Jacobsen and father of Lia Jacobsen

Rhea Savell - Cousin of Marty & Helen Siegal and Jennifer Siegal-Miller

Marla Joyce Perlman - Sister of Charles & Lori Siegel

Allan Glaser - Cousin of Linda Denning

Susan Wig - Cousin of Irene Adler

Larry Orenstein - Brother-in-law of Larry & Wendy Israelite

Mark "Bud" Grusin - Husband of Linda Grusin

Gilbert Steinberg - Father of Barbara Steinberg

Marty Cohn - Husband of Karen Cohn

*May their memories be a blessing.
Zichronam liv'rachah.*

BEREAVEMENT GROUP FOR MEMBERS OF THE TEMPLE SHALOM COMMUNITY

In the spirit of our tradition, which calls us to perform the mitzvah of Nihum Avelim (comforting mourners), Temple Shalom offers a Bereavement Support Group via Zoom for people who are grieving for a loved one. Please contact Arline Kaplan (arkaplanphd@gmail.com) or Leslie Wasserman (leshbr@aol.com) for more information.

REMEMBER OR HONOR A LOVED ONE

For many generations, Jews have made it a custom to sanctify their joyous events with a charitable donation. At Temple Shalom, there are several ways for us to remember or honor a loved one and give thanks for milestone events in our lives. Please consider a *yahrzeit* plaque, Tribute Garden paver, leaf on the Tree of Life, or dedicating a Torah portion in the Illustrated Torah as a permanent remembrance. Your generosity will contribute to the future of Temple Shalom.

Scan the QR codes below with the camera on your cellphone to go directly to an order form, or call the Temple Shalom office for assistance.



Remember your loved one with a *yahrzeit* memorial plaque in the Sanctuary. A light next to the plaque is lit during the week of their *yahrzeit* and during *Yizkor*.



Order and customize a brick, a tree or a bench in the Temple Shalom Tribute Garden in memory of, or in honor of a loved one or special event.



A leaf or Star of David on the Tree of Life in the Sanctuary is a beautiful way to commemorate a loved one or a meaningful occasion.



Dedicating a Torah portion in the Illustrated Torah is a meaningful way to memorialize an individual or a special celebration. You may also choose to dedicate a word or a special verse.

MEN'S CLUB Temple Shalom



**MEN'S CLUB
President**

Ron Yasbin

The Board of the Temple Shalom Men's Club wishes everyone a happy and healthy New Year.

On March 9, we will again offer Deli Meals from Ben's Kosher Delicatessen. This is a fundraiser for the Men's Club and will help us meet our commitments to Mitzvah Day, the schools, the Temple, the food banks, etc. To place your orders, use the form on the next page or go to the Men's Club page on the Temple Shalom website (www.naplestemple.org/one-family/mens-club/) to print out a form. Orders must be submitted by March 1.

As mentioned last month, the Men's Club will be sponsoring a discussion by experts from JScreen concerning the genetic mutations that have been identified that increase the incidence of a variety of cancers. Hopefully, we will be holding this discussion in late February. More information will follow. This valuable discussion will be free of charge and open to everyone in the community. Clearly, one of the greatest advancements in medicine and health has been the sequencing of human DNA. The experts from JScreen will explain how testing can help in early diagnosis and treatment.

Please remember that we are always open to suggestions on how we can expand and fulfill our mission. Feel free to contact me at ryasbin@att.net.

For more information on the Men's Club and to download a membership application, visit the Men's Club page under Connect on the Temple Shalom website at www.naplestemple.org

MEN'S CLUB
Temple  Shalom

BOX MEALS FROM BEN'S KOSHER DELI

PICK-UP AT TEMPLE SHALOM MARCH 9

***This is a great way to support the Men's Club
and all they do for our community!***

THE COST IS \$31 PER BOX. *EACH BOX INCLUDES THE FOLLOWING:*

***Choice of one sandwich - (Pastrami, Corned Beef, Turkey, or Roast Beef)
Potato Salad, Coleslaw, Pickles and Condiments
Choice of a Round Potato Knish, Kasha Knish or Potato Latke***



Check out Ben's Kosher Deli - www.bensdeli.net

NAME _____ PHONE _____

EMAIL _____

Choice of meat for each sandwich ordered:

☐ PASTRAMI ☐ ROAST BEEF
☐ CORNED BEEF ☐ TURKEY

Choose one of the following for each meal ordered

☐ ROUND POTATO KNISH ☐ KASHA KNISH
☐ POTATO LATKE

TOTAL NUMBER OF MEALS ORDERED _____ X \$31 = TOTAL _____

Make checks payable to Temple Shalom Men's Club

Questions? Contact Ron Yasbin at 702-765-4170

Mail completed form and check to Ron Yasbin
3317 Baltic Dr. • Naples, FL 34119

or by email at ryasbin@alumni.psu.edu

FORM & CHECK MUST BE RECEIVED BY MARCH 1

TIKKUN OLAM VOLUNTEERS CHAIR

Don Belmont



“So many things to do, and so little time.”

January 1 brings with it New Year’s resolutions. Usually these involve, “How can I be the best ‘me’ possible?” But, it is also a time to rededicate ourselves to building a better world. Here are some concrete ways to do that:

Tu B’Shevat (“birthday of the trees”) falls on January 17 this year. Tu B’Shevat is the original Jewish Earth Day. The holiday has evolved into caring for the environment and advocating on its behalf. Here’s what you can do:

- Plant a tree or shrub in your yard or community
- Start an herb garden
- Hang a birdhouse
- Pick up a piece of litter you see on the street this week, instead of ignoring it.
- If you don’t already have one, buy a separate recycling bin.
- Pull a weed this month instead of spraying it with chemical herbicide.
- Visit the website of a local environmental organization and support their work:
 - Growing Climate Solutions - <https://growingclimatesolutions.org/>
 - Conservancy of Southwest Florida - <https://conservancy.org/>

Martin Luther King, Jr. Day also occurs on January 17. While MLK Day commemorates and honors the life and work of Martin Luther King, it has also become a national day of service. Consider his challenge, “Life’s most persistent and urgent question is, what are you doing for others?” Find yourself a volunteer opportunity – there is a listing of in-person and virtual volunteer opportunities at Americorps.gov. If you enter your zip code and area of interest, there is likely a volunteer opportunity for you!

There is so much to do. We can’t do it all. So, how about picking ONE THING this month, and doing it? Along with the Tikkun Olam Volunteers, turn your faith into action!

**For more information on the Tikkun Olam Volunteers,
visit the Tikkun Olam page under Connect on the Temple Shalom
website at www.naplestemple.org**

A Look at Hunger & Food Insecurity in Our Community: What Can We Do to Help?

A Series of Forums Presented by the Tikkun Olam Volunteers of Temple Shalom

Two well respected experts will share with us the extent of hunger and food insecurity on seniors and school children in Collier and Lee Counties, as well as, the impact of the pandemic on the schools and the Naples Senior Center and how they are addressing these issues. They will offer insight on how Temple Shalom members and groups can help.



Dr. Jaclynn Faffer

Dr. Jaclynn Faffer, President/CEO of Naples Senior Center at JFCS, has been a visionary leader in the field of human services for over 25 years.



Elizabeth Alfaro

Elizabeth Alfaro is the Director of Nutrition Services at Collier County Public Schools.

Wednesday

January 12

1:30pm

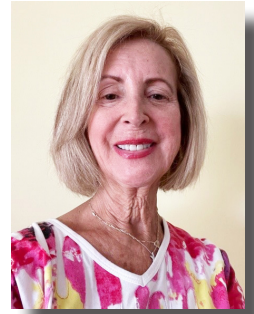
Via Zoom

Zoom link can be found in the weekly email or contact the Tikkun Olam Volunteers at TempleShalomTOV@gmail.com



Please RSVP to TempleShalomTOV@gmail.com

SISTERHOOD



SISTERHOOD
PRESIDENT

Barbara Druckman

Happy 2022! January was named after the Roman god Janus, the god of beginnings and transitions. At the beginning of the year people start to create goals for the New Year such as, planning a more balanced life, improving their finances, reading more books, beginning a new hobby, eating healthier, volunteering and maybe even making a new friend. This is a good time to start the New Year by joining Sisterhood, getting involved in volunteering and meeting new people.

Unfortunately we have had to postpone the upcoming Mah Jongg Tournament originally scheduled for Tuesday, January 11. The new date will be March 8. Our Fashion Show and Luncheon is currently scheduled for April 5. More details to follow!

Sisterhood runs the only Judaica gift shop in Greater Naples. The gift shop is open by appointment only. Please contact Amy Young at younga321@aol.com to schedule an appointment or for information on merchandise.

As you reflect on your accomplishments this past year, look forward to your goals this year. Make your New Year's resolution to become more involved with Sisterhood.

The garnet is the birthstone for January. This gem symbolizes perseverance, truth, patience and consistency, qualities we should all strive to achieve. Some people believe this stone has the power to bring good health, wealth and happiness. This is my wish to everyone as we begin 2022. Treasure every day!



Sisterhood Book Bag will continue via Zoom. Please contact Nancy Suslov, nisuslov@gmail.com, or Linda Wainick, wainjl@aol.com, for more information.

Thursday, January 20 at 1:30pm via Zoom

"All Rivers" by Dorit Rabinan

Facilitator: Linda Wainick

Temple Shalom Sisterhood MAH JONGG TOURNAMENT FUNDRAISER

NEW DATE Tuesday, March 8



Temple Shalom • 4630 Pine Ridge Rd. • Naples, FL 34119 • 239-455-3030

8:30am - Registration & Continental Breakfast

9:00am - Play Begins

**MORNING & AFTERNOON
CASH PRIZES**

**DELICIOUS CHINESE BUFFET
SPECTACULAR SILENT AUCTION**



Questions? Contact Robin Mintz by email - MintzMom@gmail.com

Mail checks for \$55 per person payable to Temple Shalom Sisterhood:

Robin Mintz

Attn: Mah Jongg Tournament

5938 Hammock Isles Circle, Naples, FL 34119

Name _____

Address _____

City, State, Zip _____

Phone _____ Email _____

I can bring a set _____ I will be East _____

We request that attendees be vaccinated if eligible. Temple Shalom's COVID protocols will be observed.

*You deserve the care of a
Real Estate Specialist.*

JOHN R. WOOD
— PROPERTIES —

*Past President & Temple Member Since 1998.
10% of my net commission will be
donated to Temple Shalom in your honor.*

Deborah Zvibleman, PA
ABR, AHWD, CIPS, CLHMS, PMN, RSPS, SRES, SFR, TRC

DZvibleman@johnrwood.com

239.272.8878

DebbieSellsYourHome4You.com



Our
referral
services are
100% FREE

**Let Us,
Help You!**

SeniorHousing
SOLUTIONS®

239.595.0207

seniorhousingsolutions.net

*Certain conditions apply. Please contact
us for more information.*

**Honest, caring and knowledgeable advice
about assisted living options ... AT NO COST TO YOU.**

With over 30 years of experience, we help eliminate the guesswork in choosing the right senior living community that meets your needs and preferences. We look beyond the fancy décor and evaluate facilities on:

- Quality of care and services
- Health care violations
- Financial viability
- Resident satisfaction
- Operational stability
- Overall lifestyle

Proudly serving Collier and Lee counties since 2008, we pride ourselves in being familiar with all the options in the area and the pros/cons of each.

Let us use our expertise to help find the right 'solution' for you!



Bruce B. Rosenblatt, Owner
Senior Housing Expert
Naples Daily News Columnist



TZEDAKAH

Showing We Care

Contributions to Temple Shalom funds are wonderful ways to show your appreciation of family and friends, to celebrate happy occasions and to honor the memories of loved ones. We suggest a minimum donation of chai (\$18.00). With a minimum donation of chai, a notice of your gift will be sent to the honoree and mention will be published in The Voice. To make a donation, visit the donation page on the website at, www.naplestemple.org, or call the Temple office at 239-455-3030.

Operations Funds

General Fund

Support Temple operations

Capital Reserve

Maintain and enhance buildings and grounds

Security Fund

Improve safety and security

Worship Funds

Memorial Fund

Donations in memory of loved ones

William Freschel Kiddush Fund

Provides Kiddush lunch each Saturday following worship services. A \$250 donation sponsors Kiddush in honor of a special someone or occasion.

Flower Fund

Bimah flowers each Shabbat. A \$200 donation sponsors flowers in memory or in honor of a special someone or occasion.

Mitzvah Baskets Fund

Bimah food baskets for Shabbat. \$200

Dr. Philip & Shirley Gilbert Music Fund

Enhances music at Temple Shalom

Prayerbook Fund

Prayer books and Torah commentaries.
Prayer books - \$54, Torah commentary - \$100
High Holy Days prayer books (set) - \$108

Stuart & Estelle Price A/V Fund

For the purpose of enhancing, improving and maintaining Temple Shalom's livestreaming capabilities

Education Funds

Adult Education Fund

Enhances adult education programs

YESh Fund

Supplies and activities for Jewish learning

YESh Enrichment Fund

Augments educational programming

Perry L. Switzen Educational Fund

Religious School scholarships

Polster YESh Scholarship Fund

Religious School scholarships

Ben Calmenson Fund

Sponsors children to attend Camp Coleman

Joseph S. Weinfeld Faculty

Development Fund

Enrichment activities for Religious School teachers

Youth Activities Fund

Financial assistance for our youth to attend Camp Coleman, regional/ national youth conventions, and Israel summer experiences.

Preschool Fund

Supplies and activities for the Preschool

Preschool Enrichment Fund

Special programs in Preschool

Arby Lipman Children's Library

For the purchase of books, magazines subscriptions and supplies

Jack and Charlotte Ward

Family Children's Music Shelf

Audio and video music for children

Artist-in-Residence Fund

To bring visiting musical artists to the Temple as an educational benefit to the membership

Library Fund

Rabbi James & Jane Perman Library

Books, magazine subscriptions and supplies

Social Action Fund

David and Lillian Thalenfeld

Fund for Social Justice

Supports Temple's participation in social justice events and activities

Oneg Shabbat Fund

Sponsors Onegs in celebration of an event or to honor someone. This fund is administered by Temple Shalom Sisterhood. Please contact Barbara Druckman at 239-405-1141.

Endowment Funds

General Endowment

Secures the future, enriches programs and provides for emergency needs of the congregation

Honey Berkle Endowment

Supports the overall mission of Temple Shalom

Paula Brody & Merrill

Hassenfeld Endowment

Supports the Cantorial Music Program

The Graev Family Endowment

Supports the overall mission of Temple Shalom

Kraus Scholar-In-Residence

Endowment

Brings visiting scholars to the Temple

Gracia & Merrill Kuller Family Fund

Supports the overall mission of Temple Shalom

Low Family Endowment

Secures the future of Temple Shalom and Reform Judaism in Southwest Florida

Temple Shalom Sisterhood

Endowment Fund

Supports the Religious School (YESh)

Truly Nolen Family Endowment

Supports the overall mission of Temple Shalom

Janet & Howard Solot Endowment Fund

To recruit and train future leaders of Temple Shalom

Stephen & Bebe Saks Endowment Fund

Supports the overall mission of Temple Shalom

Clergy Funds

Rabbi Miller's Discretionary Fund

For tzedakah, charitable purposes, and general enhancement of the Rabbi's work

Cantor Azu's Discretionary Fund

For tzedakah, charitable purposes and general enhancement of the Cantor's work

Rabbi Boxman's Discretionary Fund

For tzedakah, charitable purposes, and general enhancement of the Rabbi's work

ABOVE & BEYOND

In Appreciation Of

Jan & Shelly Whitman's 67th wedding anniversary from Leonard & Jean Nacht

ADULT EDUCATION

In Honor Of

Suzann and Steve Yussen on their anniversary from Shelly & Jan Whitman

In Memory Of

Esrael Bassewitz from Harold & Lisa Lauber

Marty Cohn from Shelly & Jan Whitman

CANTOR AZU'S DISCRETIONARY FUND

In Appreciation Of

Evan's Bar Mitzvah from Josh & Esther Garfield

Cantor Azu from Marshall & Beverly Fried

In Honor Of

Avery Goldberg becoming a Bat Mitzvah from Allan & Gabriela Goldberg

Jan and Shelly Whitman's 67th wedding anniversary from Judi & Dan Spintman

In Memory Of

Gilbert Steinberg from Bunny Kaufman

Mort Porter, Rose Katz, Morris Katz, Rose Porter and Harry Porter from Henny Porter

Marty Cohn from Mae Riefberg

Agnes Pearl Rosen from Robyn Deering

DR. PHILIP & SHIRLEY GILBERT MUSIC FUND

In Memory Of

Marty Cohn

Andrew & Sydelle B. Weinberger

Barbara Steinberg & Bob Hayum

Bunny Kaufman

Carole & Jason Flegel

David & Cary Goodman

David & Joan Friedman

Susan and Joel Pittelman

Dr. Joseph & Merrylee Kandel & family

Edward & Lori Cohen

Gene & Bobbie Katz

George & Cynthia Rubin

George Vazakas

Howard & Janet Solot

Jeffrey & Ida Margolis

Jerome & Linda Wainick

Judi and Dan Spintman

Judy & Phil Ciorciari

Linda Bluhm

Lydia Bond

Mark & Anne Rubin

Mary, Les, Charlie & Molly Trobman

Michael Rubner

Neil & Tussy Shnider

Paul & Joyce Moskowitz

Jane & Rabbi James Perman

Richard & Allyn Prosten

Robert Davidson & Shellie Specter

Shelley & Jacob Lieb

Steven & Suzann Yussen

Tracey and Dr. Larry Albert

ENDOWMENT FUND

In Appreciation Of

Temple from Robert & Frances Nossen

In Honor Of

Jan and Shelly Whitman on their 67th anniversary from Gene & Bobbie Katz

Susan and Nat Ritter on their 10th anniversary from Gene & Bobbie Katz

Jack Wiadro on his 80th birthday from Gene & Bobbie Katz

In Memory Of

Dr. Martin Cohn from Frances & Robert Nossen

FLOWER FUND

In Honor Of

Jack Wiadro on his 80th birthday from Jack & Nancy Wiadro

Evan Garfield becoming a Bar Mitzvah from Joshua & Esther Garfield

In Memory Of

Godfrey Levy from Joseph, Merrylee, Max, Hannah & Geena Kandel & Susan Ford Franca

GENERAL FUND

In Appreciation Of

Marty Cohn from Dr. William Orr

In Honor Of

B'nai Mitzvah of Jonah & Gabriel Miller

Corrine & Jon Merksamer

David Millstein

Gale Lazarus

Dan and Judi Spintman from Debbie Zvibleman

Natalie Hyde from Harris & Audrey Yett

Israel from James Kevin Smith

Madeline becoming a Bat Mitzvah from Larry & Marjorie Goldfarb

In Memory Of

Edward Kauffman from Bobbie Kauffman

Samuel Budner from Carolyn Greenberg

Barbara Barron from Janet & Howard Solot

Arlene Yedid from Jay & Virginia Bain

Ada Siegel, David Siegel and Ruthine Simon from Charles & Lori Siegel

Evelyn Brenner and Irving Berzon from Harvey & Maxine Brenner

Sima Schwalb, Nicholis Schwalb, Helen Fritz and Louis Fritz from

Jesse & Renee Fritz

Vera Heilbrun from Linda Russell

Meyer Silverstein from Joyce Toub

Bud Grusin from Michael & Arlene Sobol

Ray Gordon from Michael & Ellen Gordon

Carl Ruwalski from Michael & Ellen Hoffman

Jeffrey Randall

Doug & Cynthia Tapley

Gary & Sharon Musser

Jerry & Mary Carbone

Michael & Ellen Gordon

Jane & Rabbi James Perman

Richard & Donna Goldblatt

Richard & Geraldine Gayle

Marty Cohn

Anonymous

Amy Young

Bette & Arnold Saslavsky

Debbie Zvibleman

Dorothy Litras

DONATIONS TO TEMPLE SHALOM

GENERAL FUND

In Memory Of

Marty Cohn

Dr. Sheryl Spielman and Family

Joseph Sullivan

Karen Ezrine

Lisa Vogel

Natalie Berman

Richard & Bonnie Johnson

With Prayers for a Speedy Recovery

For all those that may be hurting physically or suffering from fear of loss from Anonymous

HONEY BERKLE ENDOWMENT FUND

In Memory Of

Dr. Marty Cohn from Shelly Berkle

JOSEPH S. WEINFELD FACULTY DEVELOPMENT FUND

In Honor Of

Helen Weinfeld's 100th birthday

Debbe and Danny Schertzer

Richard & Allyn Prosten

Sandra Stone

In Memory Of

Marty Cohn from Helen Weinfeld

MEMORIAL FUND

In Honor of

Dr. Martin Cohn from H.L. Johnson Elementary School

In Memory of

William Smith from Irene Smith

William Smith from David & Daryl Sissman

Marty Cohn from Mark Pratt

Jeffrey Randall from Robbins, Salomon & Patt, Ltd.

Fred Liebrader from Stephen & Sherry Pino

Minnie Wolf and Justin Wolfe from Carol & Dave Wolfe

MITZVAH DAY DONATIONS

In Appreciation Of

Mitzvah Day and Temple Shalom from Evan Garfield

Temple from Robert & Patricia Gage

Jonah and Gabriel becoming B'nai Mitzvah from Sherry and Lee Spielman

In Memory Of

Karen Lynn Ciorciari from Judy & Phil Ciorciari

Roslyn Burns from Judy & Phil Ciorciari

To Support Mitzvah Day

Howard & Janet Solot

Shelly Berkle

MITZVAH FOOD BASKETS

In Honor Of

The yahrzeit of my husband, the late Herbert Adler from Susan Adler

PERRY L. SWITZEN EDUCATIONAL FUND

In Memory Of

Perry Switzen from Dennis R. & Maureen Schaab

Isabelle Seidman from Judy & Phil Ciorciari

Jeffrey Randall from Jane & Rabbi James Perman

PLEASE DO NOT FORGET US

In Appreciation Of

Robert H. Stovall, Sr. from Inger Benedikte Stovall

Dr. Jerome and Ann Stein from Inger Benedikte Stovall

In Memory Of

Godfrey Levy from Michael Markowitz & Alice Napolitano

POLSTER YESH SCHOLARSHIP FUND

In Honor Of

Judy Zahn's special birthday from Geri Rothwell

Bar Mitzvah of Scott Saks from Judy & Phil Ciorciari

B'nai Mitzvah of Jonah and Gabriel Miller from Judy & Phil Ciorciari

Diana Gluckstern's 100th birthday from Kalmin & Ruth Faye

PRAYER BOOK FUND

In Memory Of

Dorothy Berliss from David & Cary Goodman

Melvin Silberg from Gay & David Silberg

RABBI BOXMAN DISCRETIONARY FUND

In Appreciation Of

Rabbi Boxman from Michael Weinstein

Other

For family in need

Anonymous

Christyna Torrez

Michael Berman

Robin Heaps

Tamara Sutton

Flanagan Family

Jeanette & Glenn Fischer

RABBI JAMES AND JANE PERMAN LIBRARY

In Honor Of

Our dear sister, Susan, and our brother-in-law Bob on their 49th wedding anniversary from Leonard & Barbara Cutler

In Memory Of

Stanley Goodman from David & Cary Goodman

Our dear friend Salvatore Triolo, beloved husband of Donna from Leonard & Barbara Cutler

TEMPLE SHALOM SISTERHOOD ENDOWMENT

In Honor Of

Helen Weinfeld on her 100th birthday from Susan Pittelman

In Memory Of

Marty Cohn from Alicia & Michael Feldman

Dr. Marty Cohn from Ellen & Steve Goldberg

THANK YOU!

RABBI MILLER DISCRETIONARY FUND

In Appreciation Of

Rabbi Miller from Craig Friedman

Evan's Bar Mitzvah from Joshua and Esther Garfield

All you have done to help our family in these difficult times from

Robyn Spector

In Honor Of

Avery Goldberg becoming a Bat Mitzvah from Allan & Gabriela Goldberg

Jonah and Gabriel Miller on becoming B'nai Mitzvah from Anthony

Clark & Jane Kessler

The B'nai Mitzvah of Jonah and Gabriel from Debbe & Danny

Schertzer

Rachel Saks becoming a Bat Mitzvah from Muriel Mitzman

Marriage from Perry & Lynn Stein

In Memory Of

Hy Shapiro from Anonymous

Leslie, Mitchell, Hannah & Ari Weiss from Arlene & Robert Subin

Albert Vogel from Carolyn Vogel

Bud Grusin from Howard & Sheila Agranat

Louis Waxler from Ira & Sandy Broadman

Ted Sernovitz from James & Millie Sernovitz

Jeff Randall from Julie & Paul Agranat

Bud Grusin from Linda Grusin

Dr. Marty Cohn from Linda & Marc Simon

Irwin Spiegel from Paul & Joyce Moskowitz

Lena Burke from Rebecca Cornacchia

Jeffrey Randall and Lou Whitman from Sandy Randall

Bud Grusin from Sandy Randall

Bud Grusin from Stephen & Rhonda Brazina

WILLIAM FRESCHEL KIDDUSH FUND

In Memory Of

Murray Cassell from Brian Cassell

YESH ENRICHMENT FUND

In Memory Of

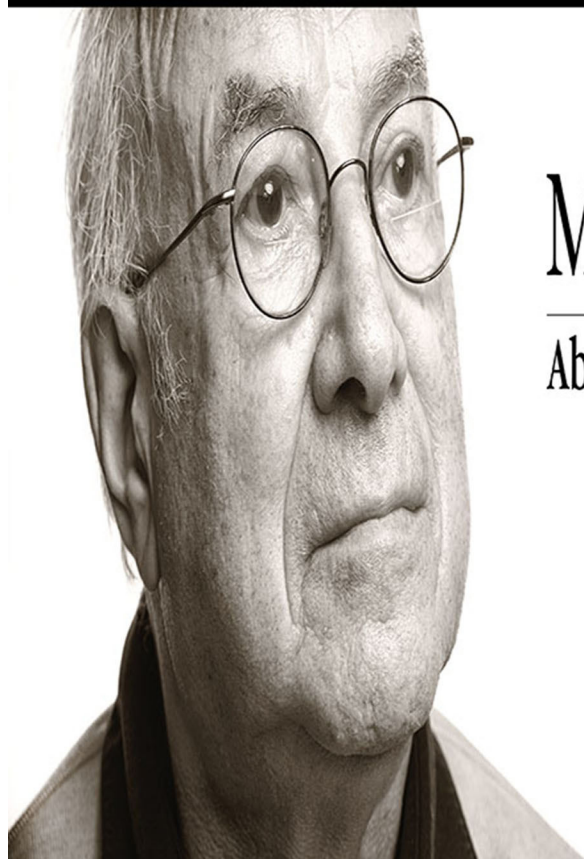
Gilbert Steinberg from Neil & Tussy Shnider

YOUTH GROUP ACTIVITIES FUND

In Honor Of

Gabriel and Jonah Miller on their B'nai Mitzvah from Judi & Dan Spintman

THANK YOU!



MAKING HISTORY PERSONAL.

Abe Price, Survivor

www.HolocaustMuseumSWFL.org

The Holocaust
Museum
& EDUCATION CENTER
OF SOUTHWEST FLORIDA

As of January 10

ABOVE & BEYOND

We Surpassed Our Goal!!
Thank You!



Torah Circle - \$18,000 & Above

Dan & Linda Carp
Carol Clarke
Estelle & Stuart Price
Stephen & Bebe Saks
Joan Werhane

Rabbi's Circle \$10,000 - \$17,999

Anonymous
Morton & Myra Friedman
Merrill Hassenfeld & Paula Brody
Mark & Anne Rubin
Donald & Arlene Shapiro
Anthony & Ashley Solomon
Howard & Janet Solot
Michal Wiesler

Sponsors \$2,000 - \$4,999

Lawrence & Tracey Albert
Shelly Berkle
Susan Bookbinder
Karen & Marty (z"l) Cohen
Dr. Leonard & Barbara Cutler
Stanley & Karen Deutsch
Deborah & Bob Fidel
Howard & Rachel Gutman
Elliot & Eloise Kaplan

Howard & Gail Lanznar
Toby Kleban Levine
David & Sue Lipman
Robert & Frances Nossen
Steve & Sherry Pino
Wayne & Toby Press
Brian Ratzan
Dr. Nathaniel & Susan Ritter
Barbara Ross

Supporters \$5,000 - \$9,999

Edward Anchel (z"l)
David & Stacy Braverman
Steven & Shelley Einhorn
The Kaufman Family
Joel Lipman, MD
Michael & Anna Peirce
Mae Riefberg
Phyllis Seaman
David & Daryl Sissman
Leonard Teitelbaum
Bernard Weiss
Frank & Debbie Wyman

Fran St. Fleur
Darren Samuel & Tammy
Strohl-Samuel
Ivan Seligman, MD
Irene Smith
Robert & Arlene Subin
Eric Wasser & Zdenka Tichy
Mark & Leslie Wasserman
Jay & Susan Weiss

Pillars \$1,000 - \$1,999

Susan Adler
Marcy Aizenshtat
Les & Carol Appel
Cantor Donna & Steve Azu
Jane Purdy Berger
Iris Bland
Adrienne Block
Janet & David Blum
Todd & Lauren Brodie
David Citrin
David Dembo
Marc & Jennifer Fleischer
Jack & Alice Gish
Ellen & Steve Goldberg
Linda & Mark (z"l) Grusin
Alan & Liz Jaffe
Ron & Lin Klein
Geoffrey & Fran Kroll
Gracia Kuller
Robert & Barbara Levine
Michelle Levine-Troupp
Mary-Beth Levitz
Simone & Scott Lutgert
Rabbi Adam Miller & Jennifer Siegal-Miller
David Millstein
Judith Nevai
Judi Palay
Jane & Rabbi Jim Perman
Sandra Rick
Michael & Naida Rodman
Richard & Elaine Rosen
Steven & Michele Rubin
Rabbi Ariel Boxman & Asher Saida
Marc & Joan Saperstein
Jane Schiff
Cindi & Brad Schrum
Mark & Judy Copeland Schulman
Joyce Shapiro Steckman
Mark & Susan Sherwin
Russell & Gail Smith
Robert & Myra Snyder
Stephen N. Solarsh
Dan & Judi Spintman
Sheldon & Elizabeth Starman
Richard M. Treiser
Jerome & Linda Wainick
Nancy White
Debbie Zvibleman

Friends - \$500 - \$999

Anonymous (2)
Alvin & Sheila Becker
Bennett & Mardelle Berman
Rita Bernstein
Bonnie Bodin
Anthony Clark & Jane Kessler
Burton & Miriam Cohn
Barbara Druckman
David Goldstein
Ken & Diana Goldstein
Bruce Graev
Linda Hamburger
Larry & Wendy Israelite
Gene & Bobbie Katz
Frances Kline
Henry Kraus
Samuel Levine
Michael & Carol Levy
Moises & Janina Levy
Rochelle & Jacob Lieb
Richard & Marianne Matties
Paul & Joyce Moskowitz
Charles & Judith Picus
Debbie Laites & Ben Z. Post
Jack & Susan Rabin
Gilbert Rashbaum
Wendy Reidel
Lyle & gloria Rosenzweig
Michael Rubner
Carole Saks
Myra Shapiro
Bruce & Carol Sherman
Bruce & Barbara Winer
Barbara Winthrop

Builders- \$250 - \$499

Edward & Cheryl Alexander
William & Randi Barr
Robert & Shirley Bassin
Thomas & Barbara Carlstrom
Phil & Judy Ciorciari
Lois & Larry Cohen
Marcy Cotton
Ron & Kathy Emanuel
Mignon & Stanley Farb
Alan & Eva Freeman
Esther & Joshua Garfield
Howard & Barbara Glick
Ted Goldberg & Jeri Hall

Michael & Justina Gordon
Lenore Greenstein
Matty Hasson
Pepi Herbst
Michael & Susan Horowitz
Dr. David & Fredda Isaacson
Andy & Di Karpman
Dale & Lisa Katz
Ellen Katz
Roslyn & Albert Katz
Jo Ann Kravitz
Martin & Hilda Levine
Godfrey Levy (z"l)

Harriet & Merlin Lickhalter
Rosealie Liebovich-Hyman
Robert & Leda Lubin
Ralph & Bonnie Mandell
Ida & Jeffrey Margolis
Joel & Susan Pittelman
Sandra Raizes
Lyle & Gloria Rosenzweig
Paul Rosofsky
George & Cynthia Rubin
Norman & Lisa Vogel
Allen & Marla Weiss
Mel & Judy Zahn

I/We Care

Stephen Bacharach
Eleanor Bonder
Jay & Mona Brodsky
Randi Butterworth
Barbara Cohen
Harvey & Katie Cohen
Kyle & Rachel Cohen
Neil & Judy Cohen
Pedro Cruz
Allen Danzig & Lynn Katz Danzig
Robert Davidson & Shellie Spec-
ter
Celia Deifek
Karen Ezrine
Martin Feins
Glenn & Jeanette Fischer
Julie Fischer
David & Eloyse Fisher
Pearl Fishman-Thall
Maxine Gould
Susan & Thomas Hager
Jason & Ellen Harris

Robert Hayum
Sylvie Heyman
Rick Holsbeke
Michael Horowitz
Fern & Andrew Jaffe
Nancy Kahn
Leatrice Kaye
Ellen & Bob Kliman
Ira & Barbara Kushnir
Bernard Lashinsky
Gale Lazarus
Victor Lucas
Phyllis Luts
Kenneth & Marcy Malc
Bill Maltby & Nancy Brown
Nancy & Tearle Meyer
James & Judy Miller
Robin & Andy Mintz
Jean & Len Nacht
Martin Nicolau
Stacy Nicolau
Samuel Oshry

Terri Polacheck
Maxine Rachelle
Barbara Ross
Martin & Elaine Samuels
Sandra & Charles Sanfilippo
Avra Schwab
Hank & Diane Schwartz
Ira & Robin Secouler
David & Gay Silberg
Arthur & Susan Sissman
Russell & Janet Sobelman
Steve & Valerie Stewart
Ann & Michael Swartz
Samuel & Ann Varsano
Andrew & Sydelle Weinberger
Marv & Carol Weisberg
Shelly & Jan Whitman
Surelle & Barry Wind
David & Carol Wolfe
Ron & Sherrill Yasbin
Steven & Suzann Yussen

Thank You!



JOHN R. WOOD
— PROPERTIES —

LUXURY PORTFOLIO
INTERNATIONAL®

BUYING OR SELLING YOUR SOUTHWEST FLORIDA HOME?

Karyn and Rowan Samuel are a husband and wife real estate team and members of Temple Shalom. We specialize in beachfront, waterfront and luxury homes in Southwest Florida.

Let us put our background, contacts and expertise to work for you!


The Samuel Team



The Samuel Team

Karyn Samuel
239.537.3732

Rowan Samuel
239.298.3555

www.lovingnaples.com

The Samuel Team will donate 10% of our net commission to Temple Shalom in your honor.

January 2022

Sunday	Monday	Tuesday	Wednesday	Thursday	Friday	Saturday
						1 Torah Study 8:30am* Shabbat morning service 10:00am
2 No YESh	3 Baby & Me 9:00am Jewish Yoga 11:00am* Jewish Wisdom 12:30pm*	4	5	6 Wise Aging 1:00pm	7 Baby & Me 9:00am Shabbat evening service 7:30pm	8 Torah Study 8:30am* Shabbat morning service 10:00am
9 No YESh	10 Baby & Me 9:00am Jewish Yoga 11:00am* Jewish Wisdom 12:30pm*	11 Melton Elective (Sinai to Seinfeld) 10:00am Adult Hebrew class 2:00pm	12 Stories of Music 10:00am* Hunger & Food Insecurity Forum 1:30pm*	13 Melton Elective (Medical Ethics) 10:00am Jewish Spirituality 1:00pm	14 Baby & Me 9:00am Shabbat Shira & Soulful Shabbat 7:30pm	15 Torah Study 8:30am* Shabbat morning service 10:00am Shabbat ShaPlay 10:00am
16 No YESh	17 <i>MLK Day</i> Preschool closed Temple office closed	18 Melton Elective 10:00am Adult Hebrew class 2:00pm Executive Committee meeting 7:30pm*	19 Tikkun Olam Volunteers meeting 1:30pm*	20 Melton Elective 10:00am Wise Aging 1:00pm Sisterhood Book Bag 1:30pm* Guest Speaker Rabbi Shalom Hammer 7:30pm*	21 Baby & Me 9:00am Beach Shabbat 5:00pm Lowdermilk Park	22 Torah Study 8:30am* Shabbat morning service 10:00am
23 YESh Judaics 9:00am Confirmation class 9:00am Garden of Eating (3rd & 4th grades) 9:00am YESh Hebrew 11:30am	24 Baby & Me 9:00am Jewish Yoga 11:00am* Israel Book Discussion Group 11:00am* Jewish Wisdom 12:30pm*	25 Melton Elective 10:00am Adult Hebrew class 2:00pm Board meeting 7:30pm*	26	27 Melton Elective 10:00am Jewish Spirituality 1:00pm	28 Baby & Me 9:00am Shabbat evening service 7:30pm	29 Torah Study 8:30am* Shabbat morning service 10:00am
30 6th grade trip to Holocaust Museum YESh Judaics 9:00am YESh Hebrew 11:30am	31 Baby & Me 9:00am Jewish Yoga 11:00am* Jewish Wisdom 12:30pm*					

Programs and events with an * take place via Zoom. All events are subject to change. Please check the calendar on the Temple Shalom website and your emails for updated information.

February 2022

Sunday	Monday	Tuesday	Wednesday	Thursday	Friday	Saturday
		1 Sisterhood Board meeting 10:00am* Melton Elective 10:00am Adult Hebrew class 2:00pm	2	3 Melton Elective 10:00am Wise Aging 1:00pm	4 Baby & Me 9:00am Shabbat evening service 7:30pm	5 Torah Study 8:30am* Shabbat morning service 10:00am <i>Bat Mitzvah of Hailey Hinchliffe</i> Shabbat ShaPlay 10:00am
6 YESh Judaics 9:00am Confirmation class 9:00am Garden of Eating (Kindergarten) 9:00am YESh Hebrew 11:30am	7 Baby & Me 9:00am Jewish Yoga 11:00am*	8 Sisterhood & Men's Cub Joint Luncheon 11:30am* Melton Elective 10:00am Adult Hebrew class 2:00pm	9 Beading for Betterment 2:30pm	10 Melton Elective 10:00am Jewish Spirituality 1:00pm	11 Baby & Me 9:00am Beach Shabbat 5:30pm <i>Lowdermilk Park</i>	12 Torah Study 8:30am* Shabbat morning service 10:00am
13 YESh Judaics 9:00am YESh Hebrew 11:30am	14 Baby & Me 9:00am Jewish Yoga 11:00am*	15 Melton Elective 10:00am Adult Hebrew class 2:00pm	16 Stories of Music 10:00am* Hunger & Food Insecurity Forum 1:30pm*	17 Melton Elective 10:00am Wise Aging 1:00pm Sisterhood Book Bag 1:30pm*	18 Baby & Me 9:00am Soulful Shabbat evening service 7:30pm	19 Torah Study 8:30am* Shabbat morning service 10:00am
20 No YESh	21 <i>President's Day</i> Preschool closed Temple office closed	22 Melton Elective 10:00am Adult Hebrew class 2:00pm Executive Committee meeting 7:30pm*	23	24 Melton Elective 10:00am Jewish Spirituality 1:00pm	25 Baby & Me 9:00am Shabbat evening service with Scholar 7:30pm	26 Torah Study 8:30am* Shabbat morning service 10:00am with Scholar-in-Residence program
27 YESh Judaics 9:00am Scholar-in-Residence 9:30am YESh Hebrew 11:30am	28 Baby & Me 9:00am Jewish Yoga 11:00am* Israel Book Discussion Group 11:00am*					

Programs and events with an * take place via Zoom. All events are subject to change. Please check the calendar on the Temple Shalom website and your emails for updated information.

THE VOICE

Temple  Shalom

4630 Pine Ridge Road
Naples, Florida 34119

Non-Profit Org
U.S. Postage

PAID

Naples, FL
Permit No. 127