

# THE VOICE

Temple  Shalom

VOLUME XLII | SHEVAT/Adar 1 5782 | NUMBER 7



**Scholar-in-Residence this month!**

February 25-27

*Guest Scholar - Rabbi Norman Cohen*

More details inside this issue

# Temple Shalom

One family, many connections

## MISSION STATEMENT

Temple Shalom of Naples is an inclusive Reform Jewish congregation where all individuals are equal partners in making our world whole and holy. We are One Family, believing in the sacredness of relationships, fostering connections – one to another, Temple, Israel, Torah and God. We are living Jewish values and nurturing future generations.

### Clergy

#### Senior Rabbi

Adam F. Miller

[amiller@naplestemple.org](mailto:amiller@naplestemple.org)

#### Cantor

Donna Azu

[dazu@naplestemple.org](mailto:dazu@naplestemple.org)

#### Director of Lifelong Learning

Rabbi Ariel Boxman

[aboxman@naplestemple.org](mailto:aboxman@naplestemple.org)

#### Rabbi Emeritus

James H. Perman, D.D.

[rabbi@naples.net](mailto:rabbi@naples.net)

### Professional Staff

#### Executive Director

Deborah Fidel

[dfidel@naplestemple.org](mailto:dfidel@naplestemple.org)

The Voice is published monthly.  
June/July are combined issues.

Editor—Jeanette Fischer

Disclaimer: Advertisements published in Temple Shalom's monthly newsletter, The Voice, in no way constitute an endorsement of a product or service by Temple Shalom.



### Staff

#### Administrative & Clergy Assistant

Randi Butterworth

[rbutterworth@naplestemple.org](mailto:rbutterworth@naplestemple.org)

#### Music Director

Dr. James Cochran

#### Maintenance Technician

Pedro Cruz

[maintenance@naplestemple.org](mailto:maintenance@naplestemple.org)

#### Director of Communications

Jeanette Fischer

[jfischer@naplestemple.org](mailto:jfischer@naplestemple.org)

#### Preschool Admin. Assistant

Julie Fischer

[preschool@naplestemple.org](mailto:preschool@naplestemple.org)

#### Education Admin. Assistant

Mary Flores

[education@naplestemple.org](mailto:education@naplestemple.org)

#### Director of Marketing

Esther Garfield

[egarfield@naplestemple.org](mailto:egarfield@naplestemple.org)

#### Groundskeeper

Rick Holsbeke

[maintenance@naplestemple.org](mailto:maintenance@naplestemple.org)

#### Facility Manager

Victor Lucas

[vlucas@naplestemple.org](mailto:vlucas@naplestemple.org)

#### Adult Ed. Admin. Assistant

Paolette Matute

[pmatute@naplestemple.org](mailto:pmatute@naplestemple.org)

#### Administrative Assistant

Michele Rubin

[mrubin@naplestemple.org](mailto:mrubin@naplestemple.org)

4630 Pine Ridge Road

Naples, FL 34119

Phone: (239) 455-3030

Fax: (239) 455-4361

[www.naplestemple.org](http://www.naplestemple.org)

[info@naplestemple.org](mailto:info@naplestemple.org)

Education Office: (239) 455-2233

Preschool Office: (239) 455-3227

### Board of Trustees

#### President

Daryl Sissman

#### First Vice President

Ed Kaufman

#### Second Vice President

Merrill Hassenfeld

#### Third Vice President

Leonard Teitelbaum

#### Treasurer

Susan Ritter

#### Financial Secretary

Steve Pino

#### Recording Secretary

Robin Mintz

#### Sisterhood President

Barbara Druckman

#### Men's Club President

Ron Yasbin

#### Temple Historian

Howard Glick

Ed Alexander

The Honorable Kyle Cohen

Joshua Garfield

Ellen Goldberg

Susan Hager

Andy Karpman

Bobbie Katz

Stacy Nicolau

Jack Rubin

Estelle Price





# CLERGY MESSAGE



Senior Rabbi  
Rabbi Adam F. Miller

## Life After Colleyville

By the time this edition of the Voice arrives at your home, it will have been more than two weeks since we collectively held our breath watching the terrifying hostage crisis at Congregation Beth Israel in Colleyville, Texas. Society has moved on. But how do we?

In our letter to the congregation, we noted the daily prayer that is part of our liturgy, "*Baruch atah Adonai, Eloheinu Melech ha'olam matir asurim*" praising God as one who frees the captive. Thankfully, our prayers were answered with all four hostages returning safely home. That prayer comes from a time, generations ago, when capturing and ransoming members of the Jewish community routinely occurred. This form of terror and extortion was so frequent that our legal texts devote entire sections to explore how much one can or should offer as the ransom.

As American Jews in the 21st century, those dark days of the Jewish community living with fear once felt ancient. Today, we cannot ignore the rise of anti-Semitism across the political spectrum, evidenced by the rapid increase in reported incidents of anti-Semitism annually to the ADL. Colleyville joins a list that includes Tree of Life, Poway, the Kansas City JCC, and too many other events in recent memory. Given all of this, the question we now face is how we should respond.

One answer comes from our Temple leadership, taking the necessary steps to protect our community. It is important to reiterate that while there are no immediate threats to our safety, we remain vigilant in our efforts to keep Temple Shalom safe and secure. Our procedures follow the highest standards for safety today with the presence of security guards and law enforcement, locked exterior doors, interior camera systems, and open lines of communication with the Collier County Sheriff's Office.

In addition to those precautions and safety protocols, we remember the teaching from our Sages, "*al shloshe devarim ha'olam omed, al ha-Torah, v'al ha-avodah, v'al gemilut chasidim*" -- The world stands on three things: Torah, worship and acts of loving kindness." We can choose to respond to acts of anti-Semitism by embracing our study of Torah, engaging in worship, and performing acts of *tikkun olam*. Demonstrating through our actions that our response to hate will be acts of faith and holiness. Gathering to participate in classes at the synagogue, attending services, and discovering blessings together. We experienced this at the first Shabbat after Colleyville, witnessing the healing power of community when more than 150 joined us for a Beach Shabbat.

The world feels different now than it did a few weeks ago, and we are different too. May our new awareness inspire us find the courage to speak out when we see the seeds of hate being sown. May we find comfort and strength by gathering together, pushing back the darkness of fear. And may the world of tomorrow be better, because we were here.

# CLERGY MESSAGE

Cantor  
Donna Azu



Purim has been one of my favorite holidays. It has always had a special place in my heart as it is perfectly Persian Jewish. Growing up in California, as a Persian Jew in a primarily Ashkenazi synagogue and religious school, I was always exposed to the Ashkenazi traditions for each holiday. However, when Purim came around, it gave me, a sense of very special pride in my Persian heritage as the events of Purim took place thousands of years ago in the land where my ancestors lived. Purim is the one holiday, and most popular contribution, Persian Jewry has given to the Jewish faith. We, as Persian Jews, are quite proud to claim the characters of the Purim story, Esther and Mordechai, among our own.

In Iran, Purim itself was a festive night and day of fun, especially for the kids. Traditional foods such as Halva made of flour or rice, sugar, oil, nuts and saffron and traditional Persian cookies were eaten and exchanged, and children often received gifts and coins during the *Seudah* (festive meal). I remember my father telling me stories of how he celebrated Purim as a child. He would love to eat Haman, a kind of cookie in the shape of a person that his mother would always make in honor of Purim, and when the name of Haman was pronounced in the synagogue during the Megilla reading, everyone would stamp their feet and make lots of noise with noisemakers. The entire floor of the synagogue was covered in carpets and when everyone stamped their feet, a cloud of dust would come out of the carpet as a sign that all the enemies of the Jews will disappear.

Regardless of the differences in customs and traditions observed around the world, the spirit of Purim remains the same in every community. Although we shouldn't forget the spiritual aspects of the holiday, Purim is permeated with a lighthearted atmosphere of cheerfulness and humor. It is the most festive of Jewish holidays, a time of prizes, noisemakers, costumes, and treats commemorating a major victory over oppression. I hope you'll join us in celebrating the joy of Purim by attending our virtual Purim Spiel on Wednesday, March 16 at 7:00pm via Zoom. Look in your email for more details!

## Calling all Thespians and Purim Shpielers!

Be a part of this year's Purim shpiel and help us bring the story of Esther, Mordechi and the wicked Haman (Boo! Hiss!) to life.

No experience necessary!

If you're interested in joining this merry band of performers and would like more information, contact Cantor Donna Azu at [dazu@naplestemple.org](mailto:dazu@naplestemple.org)





# CLERGY MESSAGE



Director of Lifelong Learning  
**Rabbi Ariel Boxman**

Temple Shalom Preschool is excited to announce that we are opening fall enrollment this month!

Our school has grown immensely since we re-opened our doors in August 2020, and we are continuing to add more classrooms. This summer, we plan to open an infant classroom for the first time ever!

There is a significant shortage of quality infant care in Naples and many working parents struggle to find an option for their infant when they need to return to work. We are thrilled to be able to finally open an infant classroom and provide a necessary service to our local parents.

Our infant classroom will hold 8 infants, and students may enroll as early as 3 months old. The class will be furnished with cribs, rocking chairs, and lots of sensory toys. In an effort to provide the highest level of safety, each student in the infant class will be provided with a Halo Sleep Sack to encourage safe sleep, and an Owlet Sleep Sock to monitor oxygen and heart rate.

Our teachers in the infant class will be fully trained in quality infant care and are already looking forward to showering the sweet babies with love and warmth.

In addition to adding a new infant class, we are also planning to open an additional VPK classroom for those students turning 4 years old. Our school is thriving and our families are happy!

We couldn't be more thrilled. We are grateful for all the support we have been given over the last two years and are looking forward to a wonderful 2022!





# LEADERSHIP MESSAGE

Executive Director  
Deborah Fidel



*"In this hour we, the living, are the people of Israel. The tasks, begun by our ancestors and prophets and continued by their descendants, are now entrusted to us. We are either the last Jews or those who will hand over the entire past to generations to come. We will either forfeit or enrich the legacy of ages."*

-Rabbi Abraham Joshua Herschel

Consider the things that are important to you such as family, the Jewish community, Temple Shalom, and making a difference.

When you join the Temple Shalom Legacy Society, you can act on each of these things that are important to you. This does not require a cash donation today, but a promise for the future.

As a member of Temple Shalom you support the congregation in a variety of ways, but have you thought to include us in your will or estate plan? By leaving a legacy, you can assure that the connection you feel to the Jewish community and our congregation will be thriving for future generations.

By making a legacy commitment you:

- Convey your commitment to being Jewish and the role Temple Shalom has played in your life
- Express values instilled in you by your parents and grandparents
- Perpetuate the Jewish traditions you cherish
- Preserve the special qualities of the Naples Jewish community
- Have an impact on Temple Shalom's future in a way you may not be able to today
- Set an example for your family and community

All of us, regardless of age or wealth, have the ability to leave a legacy. Your legacy gift, of any size, can be customized and structured to fit your dreams, lifestyle, family and financial needs. You can provide support for the congregation in general or for a particular area of interest, or to honor a loved one.

The simplest method of leaving a legacy is through a will or estate plan or by adding or changing a beneficiary designation on a retirement fund or life insurance policy. Your legacy commitment can be a percentage or a specific dollar amount.

I encourage you to speak to your financial planner and learn about all the ways that you can support our mission for generations to come. Please feel free to contact me about signing a non-binding Letter of Intent to become a member of the Heritage Society. Thank you!



# WORSHIP WITH US



## Shabbat Worship

Friday evenings at 7:30pm

Saturday mornings at 10:00am

## *Shabbat with Scholar-in-Residence*



Friday & Saturday, February 25 & 26  
Rabbi Norman Cohen will join us  
for Friday evening and Saturday  
morning services.

## *Beach Shabbat*

Friday, February 11 at 5:30pm

*Lowdermilk Park*

We meet at the north end of the beach.

Bring a beach chair.

NO SERVICE AT TEMPLE SHALOM.



## *Soulful Shabbat*

Friday, February 18

A service conducted in song and  
accompanied by a professional band.



**Can't make it in person?**

**You can join us online!**

Watch via livestream at  
[naplestemple.org/media](http://naplestemple.org/media)

*or*

Facebook

[facebook.com/templeshalomnaplesfl](https://facebook.com/templeshalomnaplesfl)

*We ask that all in-person attendees be fully  
vaccinated (if eligible).*

*Masks are required for those age 5 and older.*

# A Noteworthy Night

## New Date

Mark your calendars!

**March 27, 2022**

AT TEMPLE SHALOM



5:00pm VIP Cocktail Reception  
6:15pm Showtime!  
Followed by dessert

Two performers, two pianos,  
and an unforgettable night!

### Event Chairs

ROBIN & ANDY MINTZ

### Honoring

CHERYL & ED ALEXANDER

DR. PAULA BRODY & MERRILL HASSENFELD

BEBE & STEVE SAKS

### Event Committee

RACHEL COHEN &  
THE HONORABLE KYLE COHEN  
BARBARA DRUCKMAN  
ESTHER & JOSHUA GARFIELD  
BARBARA & HOWARD GLICKEN  
ELLEN & STEVEN GOLDBERG  
CAROL & BURTON HIRSCH

ROSIE HYMAN  
BOBBIE & GENE KATZ  
JAMES KNAFO  
JANE & RABBI JIM PERMAN  
STEVE & SHERRY PINO  
SUSAN & JOEL PITTELMAN  
ESTELLE & STUART PRICE

JUDIT & RICHARD PRICE  
SUSAN & JACK RABIN  
SUSAN & NATHANIEL RITTER  
ARLENE & DON SHAPIRO  
DARYL & DAVID SISSMAN  
JANET & HOWARD SOLOT  
JUDI & DAN SPINTMAN



# Sponsorship Opportunities

	BENEFITS				RECOGNITION		
	TICKETS	VIP RECEPTION	PREFERRED SEATING	SONG REQUEST	THE VOICE	PROGRAM	SAKS LOBBY SCREENS
JAZZ - \$18,000	8	🎵	🎵	🎵	🎵	🎵	🎵
ROCK - \$15,000	6	🎵	🎵	🎵	🎵	🎵	🎵
BLUES - \$10,000	4	🎵	🎵		🎵	🎵	🎵
POP - \$5,000	2	🎵			🎵	🎵	
CLASSICAL- \$2,500	2	🎵			🎵	🎵	
OLDIES - \$500	1	🎵			🎵		

**TICKET ONLY - \$125**

## RSVP by March 7

Name: \_\_\_\_\_ Phone: \_\_\_\_\_

JAZZ - \$18,000 ☐      POP - \$5,000 ☐      TICKET ONLY - \$125 ☐  
 ROCK - \$15,000 ☐      CLASSICAL- \$2,500 ☐  
 BLUES - \$10,000 ☐      OLDIES - \$500 ☐

Name for recognition: \_\_\_\_\_

☐ Please charge my:

☐ Visa    ☐ Mastercard    ☐ Amex    ☐ Discover

Card No. \_\_\_\_\_

Exp. Date \_\_\_\_\_ Security Code \_\_\_\_\_

Billing Address \_\_\_\_\_

Signature \_\_\_\_\_

☐ A check for \$\_\_\_\_\_ is enclosed (make payable to Temple Shalom)

☐ I am unable to attend, but please accept my enclosed donation.



# SOLOT LEADERSHIP ACADEMY

2022



Join with other future leaders of Temple Shalom  
For this interesting, important learning opportunity!

Leading people (or organizations) can be challenging. Leading a religious organization can be even more so. This program has been designed to help Temple Shalom members who have been effective, successful leaders in their personal lives explore and, potentially, transition into leadership roles at Temple Shalom. The Solot Leadership program, taught by the Temple Shalom professional and lay leadership team, will focus on:

- Principles of Jewish Leaders
- The Key Tenets of Relational Judaism
- Leading at Temple Shalom
- Living as "One Family"
- The Temple Shalom Strategic Plan
- Opportunities for Future Leaders

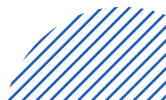
**WEDNESDAYS - 7:00PM**  
**AT TEMPLE SHALOM**  
**MARCH 2, 9, 23**  
**APRIL 6**



**TO REGISTER**

CONTACT

info@naplestemple.org  
or 239-455-3030



# KIDS KORNER

## Shabbat ShaPLAY

**Saturday, February 5**  
**10:00am - 11:30am**  
**Sea Gate Park**

Join Rabbi Boxman & Miss Jane as we sing, dance, play and celebrate Shabbat in the park!

All young families are invited to attend. Temple Shalom membership not required!

RSVP to  
[education@naplestemple.org](mailto:education@naplestemple.org)



9:00 am - 11:00 am

### SESSIONS

February 13  
March 6  
April 24



For parents and their little ones (2-4 year olds). Through crafts, play, yoga, music and fun, kids will learn about Judaism in a hands-on and experiential way.

CONTACT 239-455-2233 OR  
[EDUCATION@NAPLESTEMPLE.ORG](mailto:EDUCATION@NAPLESTEMPLE.ORG)  
TO REGISTER

[WWW.TEMPESHALOMPRESCHOOLNAPLES.ORG](http://WWW.TEMPESHALOMPRESCHOOLNAPLES.ORG)



**Temple  
Shalom  
Preschool**

LOVE THE LEARNING, LIVE THE VALUES



Your child deserves  
the **BEST!**

Creative Learning  
Outstanding Education  
Nurturing Environment

**Music - Art - Storyland**  
**Science - Technology**  
**Gymnastics - Playground**  
**Outdoor Classroom - VPK**  
**Baby & Me**

For more information or to  
schedule a tour:  
239-455-3227  
[preschool@naplestemple.org](mailto:preschool@naplestemple.org)

Temple Shalom Preschool  
4630 Pine Ridge Road  
Naples, FL 34119

[WWW.TEMPESHALOMPRESCHOOLNAPLES.ORG](http://WWW.TEMPESHALOMPRESCHOOLNAPLES.ORG)



## Baby & Me



**Mondays and Fridays**  
**9:00am-11:00am**

0-2 Year Olds

Sensory Activities - Baby Sign Language  
Music - Storytime - Yoga - Tummy Time - Bonding

For more information or to  
schedule a tour:  
239-455-3227  
[preschool@naplestemple.org](mailto:preschool@naplestemple.org)

Mondays ONLY: \$130/month  
Fridays ONLY: \$130/month  
Mondays and Fridays:  
\$200/month



# NEW MEMBERS

## Cole & Kyle Caruso

## Andy & Merrill Solan

Merrill and Andy Solan have spent their winters in Naples since 2012. Originally from New York, they are retired physicians - Merrill a Radiation Oncologist and Andy a Hematologist/Medical Oncologist. They raised their children, Amy (43) and Josh (41) and worked in suburban Philadelphia where they were members of Congregation Ohev Shalom for over 40 years. Merrill and Andy recently relocated their summer residence from Pennsylvania to Glen Cove, New York to be closer to their grandchildren, Lyla (5) and Sebastian (3). The Solans are active members of WCA, MCA and the Holocaust Museum. They look forward to making new friends at Temple Shalom and expanding their involvement in the Naples Jewish community.



*You deserve the care of a  
Real Estate Specialist.*



*Past President & Temple Member Since 1998.  
10% of my net commission will be  
donated to Temple Shalom in your honor.*

**Deborah Zvibleman, PA**  
ABR, AHWD, CIPS, CLHMS, PMN, RSPS, SRES, SFR, TRC  
DZvibleman@johnrwood.com  
**239.272.8878**  
**DebbieSellsYourHome4You.com**



**MARCH 13, 2022**

**Sunday at 11:00AM**

**Collier/Lee HADASSAH**  
*presents*

**HADASSAH**  
the power  
of women  
who **DO**

# Inspiring Women

EMPOWERING YOUR PASSION

For more information, please contact  
Diane Schwartz at 732-539-4011 or  
dianepschwartz@gmail.com

V I R T U A L L Y H O N O R I N G



**NAOMI BLOOM**

Entrepreneur  
Software Innovator  
Philanthropist



**LINDA OBERHAUS**

Human Services Executive  
Social Work Expert  
Advocate



**ROBIN MINTZ**

Volunteer  
Community Leader  
Magazine Production Editor



**SUSAN PITTELMAN**

Community Leader  
Volunteer  
Book Publisher



**Our assisted living is  
accredited for two reasons.  
You. And your family.**



**Because having the confidence and peace of mind  
of accreditation is important.** That's why The Carlisle  
is accredited by CARF International—an independent  
organization that sets exceedingly high standards for

care, service and safeguards. It's a lot like an accreditation  
for a hospital or college. Or a five-star rating for a hotel.  
We think you'll find that our accreditation is only  
one of the many reasons to take a good  
look at The Carlisle Naples.



► **Call 239.444.6891 today to schedule a personalized tour!**

6945 Carlisle Court • Naples, FL • **239.444.6891** • [TheCarlisleNaples.com](http://TheCarlisleNaples.com)

**CARF-ACCREDITED INDEPENDENT & ASSISTED LIVING RESIDENCES • ECC LICENSED**



# LEARN WITH US

## JEWISH YOGA

**Mondays  
11:00am  
VIA ZOOM**

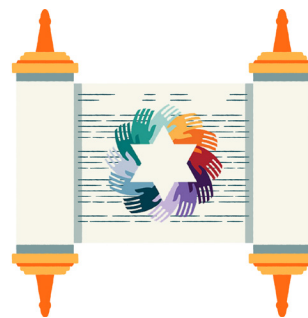
Yoga teacher, Missy Balsam guides you through an all-levels, gentle yoga stretch session interwoven with Jewish spiritual teachings.



**Open to all.  
No experience  
necessary.  
Join anytime.**

Registration is required for this very popular class. Cost - \$54  
*Space is limited*

**Contact the Temple Shalom  
office 239-455-3030**



## SHABBAT MORNING TORAH STUDY

**Saturdays at 8:30am  
via Zoom**

Study the weekly Torah portion with the guidance of clergy. Text sheets will be shared online.

*Learners of all levels are welcome.*

**Zoom link can be found on the weekly email  
or contact [education@naplestemple.org](mailto:education@naplestemple.org).**

## סיפורי מוסיקה STORIES OF MUSIC



### **"The Sounds of Eretz Israel in America: The Crucial 60's"**

Part 2  
**Wednesday, February 16  
10:00am via Zoom**

***Presented by Cantor Donna Azu***

Explore how the music of Israel grew in the consciousness of American Jews and penetrated American culture generally.



## ISRAEL BOOK DISCUSSION GROUP

4th Monday of the month  
11:00am via **zoom**

**Monday, February 28**  
"Tel Aviv Ramallah"  
by Yossi Yonah



**Contact Michael Rubner for Zoom link info  
[exfgomsu@aol.com](mailto:exfgomsu@aol.com)**



# Scholar-in-Residence

## Rabbi Norman Cohen

Friday, February 25– Sunday, February 27

### ***Moses as Every Person: What the Bible Can Teach Us About Our Own Struggles as Human Beings***

**Friday, February 25 – 7:30pm**

Moses' Struggle with His Own Self-Doubts:  
Confronting Our Own Demons

**Saturday, February 26**

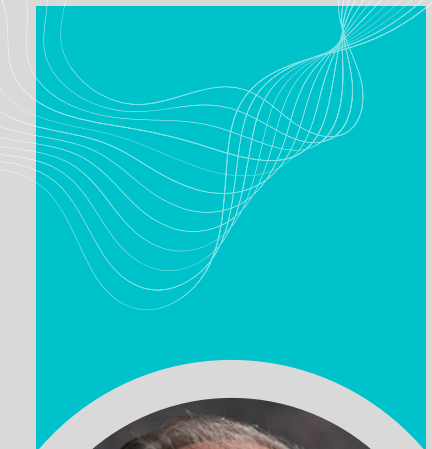
**Service – 10:00am**

**Study Session – 12:00pm**

Moses as Brother: His Relationship with Miriam  
and Aaron, and Our Relationships as Siblings

**Sunday, February 27 – 9:30am**

Moses Suffers the Loss of Miriam and Aaron:  
Dealing with the Deaths of Those Whom  
We Love



Scholar

**Rabbi  
Norman  
Cohen**

*The Scholar-in-Residence Weekend is made possible through the generosity  
of the Shirley (z"l) & Henry Kraus Scholar-in-Residence Fund.*

# LEARN WITH US

Temple  Shalom  
One family. many connections

COMING IN MARCH—  
THE HAGGADAH: HOW JUDAISM'S ESSENTIAL  
BOOK REVEALS THE MEANING OF LIFE



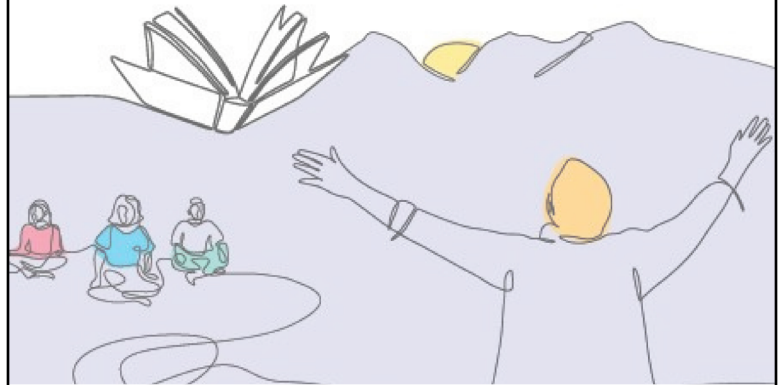
A 4 session mini-course taught by  
Rabbinic Scholar, Rabbi Frank Muller

Wednesdays, March: 2, 9, 16, & 23  
From 10:00-11:00am via Zoom

Check the weekly email for the Zoom link.

## *Pray it forward: God, Gratitude, and Gathering Together*

The course will explore some of the concepts behind prayer  
and blessings, as well as the power of meditation, as we link our  
past, present, and future, to the immediate and the transcendent.  
This is a journey of the soul—start today.



Thursday evenings - 8:00 - 9:30pm

February 3, 10, 17, March 3, 10, 24

Via Zoom

To register, contact Paolette Matute  
239-455-2233 or [pmatute@naplestemple.org](mailto:pmatute@naplestemple.org)



MeltonKC is generously funded by Menorah Heritage Foundation and Jewish Federation.



## *Make a Meal: Do a Mitzvah!*

Did you know that there is a special group at Temple Shalom who prepare and deliver "meals of love" to members of our One Family who have recently been discharged from the hospital?

This is a great way to brighten someone's day and show you care. Choose your level of participation according to your schedule. No regular or long-term commitment required.

**For more information contact**

Temple Shalom at 239-455-3030 or  
Deborah Fidel at [dfidel@naplestemple.org](mailto:dfidel@naplestemple.org)

Nancy Brown & Harriet Lickhalter  
Program Coordinators

# It's been a while... CALL YOUR FRIENDS!

The Temple Shalom membership directory is online and available to Temple Shalom members.

## Getting started is easy!

If you haven't already, create your account to access the online membership directory, make a donation, view your yahrzeits, billing and payment history and many other benefits.



### Create your online account on your desktop, iPad or cellphone

1. Go to [www.naplestemple.org](http://www.naplestemple.org) and click the grey Login button in the top right corner of the page.
2. Click "forgot password" and enter your email address where prompted. You'll receive an email with a link and instructions for setting up your account.
3. Click the link and follow the on-screen instructions to create your password.

Next, download the Temple Shalom app for real-time updates, schedule changes and on-the-go membership directory.

### Download the Temple Shalom app to your cellphone or iPad

First locate the App Store on your device:



or



1. Search for Temple Shalom Naples, FL. Make sure you see our logo:
2. Tap "Get" or "Download"
3. Once the app is downloaded to your phone or device, you will need to log in using the email and password you created for your online account.
4. When prompted about receiving notifications, select "allow" and you're all set to receive up-to-the-minute schedule changes, access the membership directory and more!

Questions? Contact the Temple Shalom office at 239-455-3030 or [info@naplestemple.org](mailto:info@naplestemple.org).  
We will be glad to walk you through the steps.



# CALL SAUL

YOUR PERSONAL DRIVER NAPLES, FL

For ALL Your Transportation Needs!

DISCOUNTS AVAILABLE  
CALL FOR DETAILS

• COMFORTABLE • AFFORDABLE • ON TIME

## OUR RIDE SERVICES

- Local & Long Distance
- Airports & Cruise Lines
- Dr. Appointments
- Shopping, Errands, Dining with Friends
- Serving Naples & ALL Florida Destinations
- Sedans, Limos, SUV's, Buses
- Driver Assistance Available
- Multiple Stops/Waiting OK

## INTRODUCING

### SENIOR RIDE SERVICES

DEPENDABLE TRANSPORTATION  
SERVICES FOR SENIORS!

CALL SAUL



Need A Ride?  
**CALL SAUL**

**239-777-2918**

email: [info@CallSaulYourPersonalDriver.com](mailto:info@CallSaulYourPersonalDriver.com)

OPEN AN ACCOUNT - SAVE TIME & MONEY! **ASK US HOW!**



Managing one's finances can be hard, but you no longer have to do it alone. Naples Daily Money Manager can help.

- Bill Paying
- Document Organization
- Reconciliations
- Budgeting
- Banking
- Professional Collaborations



• BONDED AND INSURED •

239-300-7177 [naplesdmm@gmail.com](mailto:naplesdmm@gmail.com)

[www.naplesdmm.com](http://www.naplesdmm.com)

## Beading for Betterment

Wednesday, March 23 & 30 at 2:30pm  
Temple Shalom

Beading for Betterment is a project of Temple Shalom designed to build on and support our greater community.

Participants are invited to bead necklaces and bracelets for the children of the Guadalupe Center to give as gifts to the important women in their lives.

Bring your own supplies, or, for a donation of \$18, there will be supplies available for you.

Contact Carol Hirsch for more info  
[chirsch1951@gmail.com](mailto:chirsch1951@gmail.com)

## COLLIER COUNTY EDUCATOR AWARD "Stand Up For Justice"



**Application Deadline: February 11, 2022**

For the 12th year a grant has been established by the Jewish Community Relations Council of the Jewish Federation of Greater Naples.

The 2022 STAND UP FOR JUSTICE Educator Grant recognizes High School, Middle School and Elementary school educators who are innovative in bringing respect for others' differences into their activities with students in a transformative, impactful, and caring way. The goal is to create a resource for educators of any discipline to incorporate strategies that promote understanding and respect among students, countering bigotry and bullying. This grant recognizes teachers, guidance counselors, school librarians, media specialists, school psychologists, administrators etc.



**Go to:**

[jewishnaples.org/outreach/educator-award](http://jewishnaples.org/outreach/educator-award)

For additional information please contact:  
Grant Coordinator, Beth Povlow  
239-363-6306  
[marcopovlow@icloud.com](mailto:marcopovlow@icloud.com)



**Jewish Federation**  
OF GREATER NAPLES

# Seder Plate WORKSHOP

SUNDAY, MARCH 6  
1:00PM

Join Cantor Donna Azu to make a beautiful, fused glass seder plate.  
**No experience or artistic talent needed!**

**Cost: \$90**  
Optional glass seder  
plate liner - \$18  
Payable by cash,  
check or Venmo on  
the day of the event

**Instructor:**  
Judy Belmont

**Location:**  
Naples Glassworks  
5560 Shirley St.  
Naples, FL 34109

**SPACE IS LIMITED!**



**RSVP to** Cantor Donna Azu  
dazu@naplestemple.

EMPTY  
Nesters



**LIVING THE  
CHAI LIFE!**



Many people initially come to synagogue life to provide their children with a Jewish education or to prepare them for a Bar or Bat Mitzvah. When children grow up and leave the home, many adults find themselves re-examining the role that a synagogue can play in their lives. Temple Shalom can still be an important part of your life at any age.

The Temple Shalom Empty Nesters is being created to share the warmth of belonging to an extended family and to celebrate Jewish life within a large community. Our Empty Nesters group will be responsible for developing, arranging, conducting and coordinating social programs, events and meetings for people between the ages of 45 and 65, with or without children at home. Activities could be game nights, dinners, group participation in Temple Shalom's social events, potlucks – bring your ideas!

If you want to get out, make new friends and learn new things, we want to hear from you. Contact Deborah Fidel at [dfidel@naplestemple.org](mailto:dfidel@naplestemple.org).





# ISRAEL CORNER

by Andy Karpman

## Carmel Market

The Carmel Market (the Shuk HaCarmel) is the largest market, or shuk, in Tel Aviv. It's a vibrant marketplace where traders sell everything from clothing to spices, and fruit to electronics.

Visiting the Carmel Market is a fascinating thing to do in Tel Aviv. The hustle and bustle, vibrant noises, and its reputation as the largest shuk in Tel Aviv all combine to make the Carmel Market a favorite. Everyone from first time tourists visiting the city to locals who come here to get the freshest fruit and vegetables fill the alleyways.

The market can at first appear to be a little intimidating, with so many senses stimulated at once. They offer a short Tel Aviv Food Tour of the Carmel Market to provide an introduction and tasting opportunity, and several other food tours for those who are looking for a richer introduction to the Israel food scene. Many visitors find this helpful when they come back to explore in more depth.

The Shuk HaCarmel Market first opened in 1920, some eleven years after the establishment of the city. It is an integral part of the history of Tel Aviv. Although much of the trade has now shifted to modern malls and the internet, the market is still immensely popular. Its narrow street is busy whenever you visit, particularly before Shabbat on Thursdays and Fridays, as residents buy supplies for their family meals. Recent years have seen a growing number of boutique stalls and food places opening alongside the traditional traders. They range from boutique beers to arrays of halva, and small eateries that take advantage of the market's produce.



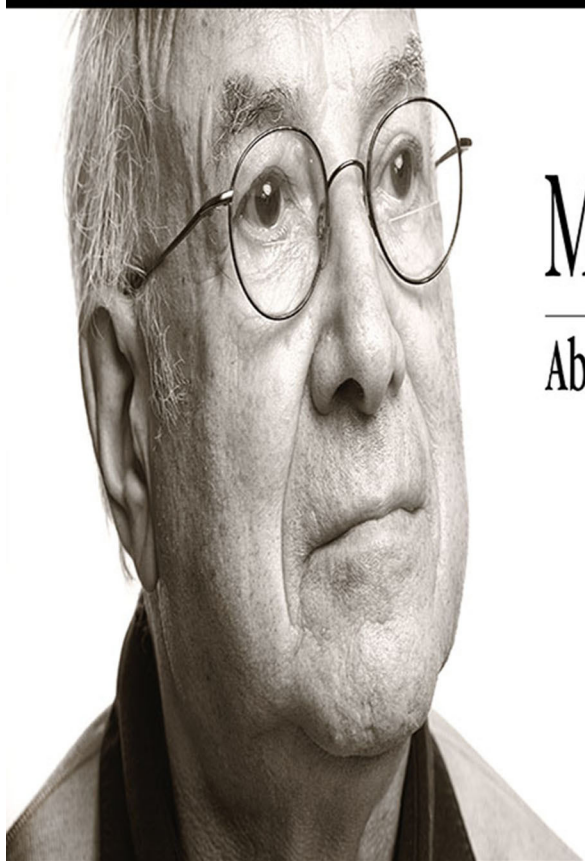


## *How will you assure Jewish tomorrows?*

What aspect of Jewish life do you cherish most - learning, community, worship, caring for those in need, or social justice? You can ensure the things you value most are sustained for future generations when you support our endowment fund today and include Temple Shalom in your estate plan.

Contact Deborah Fidel,  
Executive Director  
(239) 455-3030  
[dfidel@naplestemple.org](mailto:dfidel@naplestemple.org)

Temple  Shalom  
One family, many connections



## MAKING HISTORY PERSONAL.

Abe Price, Survivor

[www.HolocaustMuseumSWFL.org](http://www.HolocaustMuseumSWFL.org)

The Holocaust  
Museum  
& EDUCATION CENTER  
OF SOUTHWEST FLORIDA

# CELEBRATE WITH US

## *Birthdays*

1	Phyllis Barolsky Iris Bland Danielle Butterworth Paul Colon Michael Rodman	7	Ronald Gale Barbara Glicken Francine Kaufman Veora Little	15	Jill Backman Jane Kessler Glenn Perrin	23	Stuart Price Jane Shaw Janet Sobelman
2	Kenneth Goodwich David Lipman Maxwell Press Carole Saks Wendy Wald Burt Zucker	8	Michael Askotzky Sharon Cohan Joyce Moskowitz	16	Franklin Wyman	24	Mel Affrime Judith Belmont Anthony Clark Terri David Eva Freeman Jeffrey Goebel Jason Harris Judson Knox Carol Levy Pamela Lundborg Tim Recher David Sissman Trudy Weisberg Adam Ardenfriend Philip Dano Ira Kushnir Harriet Monson Charles Siegel
3	Scott Lutgert Steven Yussen	9	Elliot Feinberg Thomas Hager Nicole Lehninger Linda Simon	17	Lynn Katz Danzig Jacqueline Abrams Marcy Cotton Iris Shur	25	Robert Lubin
4	David Ornstein Cecille Raichlen Lyle Rosenzweig Tammy Strohl-Samuel	10	Nora Atkins	18	Barbara Carlstrom Merel Greenfield Ronald Kaplan Jo Ann Kravitz Stewart Ross Lee Spielman Nancy White	26	Robin Saks Donna Goldblatt Anne Klein
5	Barbara Barnard John Nittolo Rebecca Wolfson Carole Yellin	11	Roberta Hecht Barry Kittinger Gloria Rosenzweig	19	Dianne Karpman Beverly Koren Lisa Mitrani Valerie Stewart	27	Sue Center Pearl Fishman-Thall Marilyn Ross
6	Allen Danzig Mark Speiser David Wolfe	12	Michael Bernberg Stanley Blank Harvey Dezen Gay Silberg	20	Jason Bell Judith Goldstein Nancy Kahn William Teller	28	Doris Adler
		13	Stacy Braverman Albert Katz Sam Miller	21	Stephen Fisher Matty Hasson		
		14	James Silver	22	Kenneth Charak Ruth Halperin Neil Koppel		

*Happy  
Birthday  
-to You-*



# CELEBRATE WITH US

## *Anniversaries*

- 2 Stephen and Marci Fisher
- 5 Richard and Allyn Prosten
- Eugene and Carol Simon
- 6 Gregory and Susan Kimmelman
- 7 Rogerio Santos and Margareth Erlich
- 9 Laurance and Claudia Baer
- Kain and Lauren Mills
- 12 Brian and Tammy Katz
- 13 Harold and Lisa Lauber
- 14 Norman and Suzanne Cohn
- Jason and Ellen Harris
- Michael and Kathleen Rainen
- 17 Stephen and Eileen Cohen
- 18 Michael and Alicia Feldman
- 19 Gary and Deborah Kohler
- 20 Brian Dorn and Amy Perwien
- Steven and Michele Rubin
- Leslie and Elizabeth Schwartz
- 21 Stanley and Karen Deutsch
- 22 Charles and Laurie Albanos
- 23 Charles and Ellen Salup
- 25 Lewis and Sybil Mitchell
- Asher Saida and Rabbi Ariel Boxman

## B'NAI MITZVAH CORNER

Hailey Hinchliffe  
February 5, 2022



Hailey is a Junior at Palmetto Ridge High School and is 16 years old. She is also dual enrolled at Florida Southwestern State College. She attended URJ Camp Coleman for 7 years and traveled to Israel. She will be

returning to camp as a counselor in training this summer. She enjoys music, including playing her flute and piccolo. Hailey also has an interest in reading in her free time.

## SIMCHAS

Randi Butterworth married Steve Hoey on January 15.

Susan Pittelman and Robin Mintz will be honored as Inspiring Women by the Collier/Lee chapter of Hadassah on March 13.

Patti and Sandy Berman celebrate their 52nd wedding anniversary on February 8.

# *Mazel Tov!*

**Share your good news with us!**

Engagements, weddings, awards, achievements, new jobs and milestones - we want to hear it all!

If you have good news you would like to share with the Temple Shalom One Family, please let us know by emailing Jeanette Fischer at [jfischer@naplestemple.org](mailto:jfischer@naplestemple.org).





# TAMMY STROHL, P.A.

PERSONAL INJURY ATTORNEY SERVING NAPLES FOR OVER 25 YEARS

ALL PERSONAL INJURY CASES TAKEN INCLUDING  
AUTO, MOTORCYCLE, AND BICYCLE ACCIDENTS,  
DOG BITES AND WRONGFUL DEATH.

Law Office of  
Tammy Strohl, P.A.

[WWW.STROHLLAW.COM](http://WWW.STROHLLAW.COM)

2315 Stanford Court, Suite 302  
Naples, FL 34112



239.793.7999

# YAHREZEITS - FEBRUARY 2022

- |                         |                         |                        |                        |
|-------------------------|-------------------------|------------------------|------------------------|
| 4 Lindy Adelstein       | 4 Harry Pittelman       | 11 Howard Lassoff      | 18 David A. Goldman    |
| Abraham Leo Alexander   | Frema Pittelman         | Larry Levy             | Kevin Goldstein        |
| Dorothy J. Appelbaum    | Allan Polacheck         | Joan London            | Phillip Grossman       |
| Samuel Baker            | Saul D. Prizent         | George London          | Betty Halperin         |
| Lawrence Banco          | Maurice Raizes          | Martha Malinow         | Louis Hershman         |
| Jack Bender             | Marcus Ritter           | Lillian Mann           | Sadie Hindin           |
| Robert Bernstein        | Clara Rosenblatt        | John Muller            | Max Hindin             |
| Estelle Cohen           | Sarah Rudman            | Rabbi A. David Packman | Walter B. Hirsch       |
| Sylvia Solomon Cohon    | Jean Rudnick            | Samuel Pactovis        | Evelyn Branower Joseph |
| Carolyn Cohon           | Eugene Sackett          | George Plotkin         | Molly Kaplan Wiadro    |
| Eleanore Corn           | Alan M. Schwalb         | Louis Raizes           | Robert Katcher         |
| Luis Diez               | Ruth (Nilda) Shnider    | Benjamin H Rosen       | James Edward LaFevers  |
| Norman Emanuel          | Thelma Silver           | Louis Rosen            | Yale Laites            |
| Lester Endlar           | Nathan Sokoll           | Seymour Rubinfeld      | Aaron Lichtenstein     |
| Hilary Feldman          | Ann Springman           | Richard Schmidt        | Marian Ginsberg Loeb   |
| Morris Fine             | Rosalba Tamargo         | Mary Shapiro           | Morris Malkin          |
| Bertha Fine             | William C. Thalheimer   | Marjorie Silver        | Edward H. Mann         |
| Edna Flagel             | Lillian Ufberg          | Jake Skurow            | Corrine Morris         |
| Jennie Friedman         | Marshall Warshauer      | Dr. Daniel Solomon     | Rosetta Moskowitz      |
| Jerome Friedman         | Sylvia Weinberger Baxt  | Hattie Trehub          | Lenora J. Newman       |
| Eva Friedman            | Eugene Weisberg         | Harriet Trehub         | Paul Nitkin            |
| Joyce Gerla             | Helene Weiss            | Amie Shapiro White     | Elissa Norris          |
| Bertha Ertag Gold       | Leon Yuchnovitz         | Jason Michael Wichter  | Minerva Nudel          |
| Lena Goldschmidt        | Philip Zaleznik         | Lee Yanoff             | Norman Pam             |
| Elaine Berman Goldstein | 11 Sid Alpert           | Mary Yaschik           | Millie Pino            |
| Goldie Goldstein        | Dubby Bernstein         | Albert Yohay           | Herb Raskin            |
| Leonard Gordon          | Richard Bodin           | Harold Zeluck          | Joshua Roseman         |
| Josh Greenberg          | Ted Boots               | 18 Linda Banks Yohay   | Pearl Rosen            |
| Gwen Hamersmith         | Frieda Cohen            | Harry Bearman          | Toby Rosofsky          |
| Lucy Holzinger          | Estelle Cohen           | Rose Becker            | Florence Rubel         |
| David Hurwitz           | Stephen M. Druckman     | Rose Berman Cohen      | Nicholas Schwalb       |
| Pearl Jacobson          | Philip Feinberg         | Mildred Braen          | Sara Schwartz          |
| Michael Kleiman         | Esther Feldman          | Leon Bricman           | Herman Schwartz        |
| Etta Kramer             | Bertram Flagel          | Ruth Bush              | Margaret Sidman        |
| Abraham Krantz          | Jack R. Frank           | Cindy Carlstrom        | Julian Siegal          |
| Nathan H. Leventon      | Marie Gold              | Sylvia Chervitz        | Lillie Simon           |
| Frieda Goldberg Melnick | Nathan Goldman          | Ruth Cohen             | Rose B. Siskin         |
| Rose Meyer              | Lawrence Gratz          | Dr. Louis Diamond      | Dorothy Soffa          |
| Bertha Meyer            | Fay Helfand             | Blanche Dorn           | Joseph Irving Stern    |
| Jay Minzer              | Marsha Henault          | Charles Elbhar         | Jacob Strome           |
| Jack Moss               | Stephen Lewy Joseph     | Leah Elstein           | Henrietta Szold        |
| Meyer Pearlman          | Gene Ira Klein          | Donald E. Esau         | Lillian Trattner       |
| David Pearlman          | Stanley Robert Kuller   | Anita Silvermann Glick | Sylvia Waldman         |
| Dora Perlmutter         | Marcia Morris Lashinsky | Grace Goldberg         |                        |

# Yahrzeits - February 2022

18 Arthur Waltzer Leslie Weber Martin Zelbow	25 Blanche Levine Tillye Lorber Stephen Marano Susan Matties-Nadel Karen Meltzer Ernest S. Nossen Sylvia Kuritz Palay Ida Golda Perman Abe Price Maurice Raizes Michael Roman Kurt Rose Joseph Ross Esther R. Rubenstein Sadie Savitzky Norma Schaffer Herman Schmidt Saul Simon Michael Skurow Nancy Weil Steele Lillian Sweet Saul Tamargo Dorothy Teitelbaum Dr. Harry Wolfe Topolosky Eugene Stix Weil Clara Weisberg Aaron Weiss Richard Weitz Nat Yanoff
25 Dorothy Blacker Sol Bloom Miriam Browar Jean Cornacchia Elizabeth Davidson Frances DuKatz Josephine Endlar Edythe Rogal Fidel Elwood Fuerstman Monte Glickin Uria Goldshtein Aaron Jeffrey Goldstein Abraham Green Roberta K Greenland Annie Grossman Richard D. Harwick Meta Hayum Herman Hershman Harry Isaacson Seth Kaner Irving Kaufman Gary Korn Bertha T. Krause Harold Krichman Dr. Arthur Levere William Levin	

## RECENTLY DECEASED (As of 1/21/2022)

**Jerry Blum** - Very dear friend of Barb & Len Cutler

**Florence Levin** - Temple member

*May their memories be a blessing.*  
Zichronam liv'rachah.

## BEREAVEMENT GROUP FOR MEMBERS OF THE TEMPLE SHALOM COMMUNITY

In the spirit of our tradition, which calls us to perform the mitzvah of *Nihum Avelim* (comforting mourners), Temple Shalom offers a Bereavement Support Group via Zoom for people who are grieving for a loved one. Please contact Arline Kaplan ([arkaplanphd@gmail.com](mailto:arkaplanphd@gmail.com)) or Leslie Wasserman ([leshbr@aol.com](mailto:leshbr@aol.com)) for more information.



For many generations, Jews have made it a custom to remember their loved ones and sanctify their joyous events with a charitable donation. At Temple Shalom, there are several ways for us to remember or honor a loved one and give thanks for milestone events in our lives. Please consider a *yahrzeit* plaque, Tribute Garden paver, leaf on the Tree of Life, or dedicating a Torah portion in the Illustrated Torah as a permanent remembrance. Your generosity will contribute to the future of Temple Shalom.

Scan the QR codes below with the camera on your cellphone to go directly to an order form, or call the Temple Shalom office for assistance.



Remember your loved one with a *yahrzeit* memorial plaque in the Sanctuary. A light next to the plaque is lit during the week of their *yahrzeit* and during *Yizkor*.



Order and customize a brick, a tree or a bench in the Temple Shalom Tribute Garden in memory of, or in honor of a loved one or special event.



A leaf or Star of David on the Tree of Life in the Sanctuary is a beautiful way to commemorate a loved one or a meaningful occasion.



Dedicating a Torah portion in the Illustrated Torah is a meaningful way to memorialize an individual or a special celebration. You may also choose to dedicate a word or a special verse.



**JOHN R. WOOD**  
— PROPERTIES —

**LUXURY PORTFOLIO**  
INTERNATIONAL®

## BUYING OR SELLING YOUR SOUTHWEST FLORIDA HOME?

Karyn and Rowan Samuel are a husband and wife real estate team and members of Temple Shalom. We specialize in beachfront, waterfront and luxury homes in Southwest Florida.

Let us put our background, contacts and expertise to work for you!

  
**The Samuel Team**



### **The Samuel Team**

*Karyn Samuel*  
**239.537.3732**

*Rowan Samuel*  
**239.298.3555**

[www.lovingnaples.com](http://www.lovingnaples.com)

The Samuel Team will donate 10% of our net commission to Temple Shalom in your honor.





# MEN'S CLUB



Men's Club President  
**Ron Yasbin**

Because of the latest COVID spikes, various events and plans have had to be changed. I want to thank all of those members of the Congregation who volunteered to help the Men's Club with our plans to serve breakfast at the Mitzvah Day activities and to work at the Harry Chapin Food Pantry. The number of people who said they would help was truly outstanding. These events were postponed to April 24. We hope that all those who volunteered will be able to help out on this new date. There's always room for more. Please contact me at [ryasbin@alumni.psu.edu](mailto:ryasbin@alumni.psu.edu) if you'd like to volunteer.

Other events are moving forward and we are hoping for great turnouts. Specifically, we will again be offering fresh Kosher Meals from Ben's Deli of New York and Boca Raton. These meals will be delivered to Temple Shalom on March 9 and will be available for pick up that afternoon. If you want to participate, please place your order using the form on the next page and send in your checks by March 1. We are presenting this option as an opportunity to bring real Kosher meals to SW Florida and as a fundraiser.

On Tuesday, February 22 at 2:30pm, the Mens' Club will be sponsoring a Zoom presentation by JSscreen on Jewish genetic diseases and the importance of testing for these diseases. This presentation will be free to all interested individuals. Check your emails for more information and the Zoom link.

On February 2, we are one of the sponsors of the Jewish Book Festival Zoom presentation of "Unstoppable: Siggi Wilzig's Astonishing Journey from Auschwitz Survivor & Penniless Immigrant to Wall Street Legend" by Joshua Greene.



## A LITTLE CARD TO SEND OUR BIG AND HEARTFELT THANKS

*Thank you to the Men's Club of Temple Shalom for your  
generous gift of iPads for our teacher's use in the classroom!*

*-Rabbi Boxman*



MEN'S CLUB  
Temple  Shalom

# **BOX MEALS FROM BEN'S KOSHER DELI**

## **PICK-UP AT TEMPLE SHALOM MARCH 9**

***This is a great way to support the Men's Club  
and all they do for our community!***

THE COST IS \$31 PER BOX. *EACH BOX INCLUDES THE FOLLOWING:*

***Choice of one sandwich - (Pastrami, Corned Beef, Turkey, or Roast Beef)  
Potato Salad, Coleslaw, Pickles and Condiments  
Choice of a Round Potato Knish, Kasha Knish or Potato Latke***



***Check out Ben's Kosher Deli - [www.bensdeli.net](http://www.bensdeli.net)***

NAME \_\_\_\_\_ PHONE \_\_\_\_\_

EMAIL \_\_\_\_\_

**Choice of meat for each sandwich ordered:**

☐ PASTRAMI      ☐ ROAST BEEF  
☐ CORNED BEEF      ☐ TURKEY

**Choose one of the following for each meal ordered**

☐ ROUND POTATO KNISH      ☐ KASHA KNISH  
☐ POTATO LATKE

TOTAL NUMBER OF MEALS ORDERED \_\_\_\_\_ X \$31 = TOTAL \_\_\_\_\_

**Make checks payable to Temple Shalom Men's Club**

**Questions? Contact Ron Yasbin at 702-765-4170**

**Mail completed form and check to Ron Yasbin  
3317 Baltic Dr. • Naples, FL 34119**

**or by email at [ryasbin@alumni.psu.edu](mailto:ryasbin@alumni.psu.edu)**

**FORM & CHECK MUST BE RECEIVED BY MARCH 1**



# SISTERHOOD



Sisterhood President  
**Barbara Druckman**

Who would have thought that two years later we would still be dealing with the pandemic?

Unfortunately, Sisterhood has had to make some changes. Our February luncheon with the Men's Club has been cancelled. We look forward to rescheduling it at a later date with our special guest speaker, Clement Soffer. The Mah Jongg Tournament has been rescheduled to March 8 and the Fashion Show will be held April 5.

Book Bag continues on Zoom Thursday, February 17, at 1:30. This month's selection, "The Orphan's Daughter" by Jan Cherubin, was chosen from the Greater Naples Jewish Book Festival list. Sisterhood will sponsor the Book Festival's Zoom presentation on Friday, February 25, at 12:00pm.

The Judaica Shop is currently open by appointment only. Contact Amy Young at 973-919-2018 or [younga321@aol.com](mailto:younga321@aol.com). Amy has received the last shipment of Rosenthal Judaica. Artist Gary Rosenthal is retiring so if you collect his pieces, this is the time to check out his beautiful items.



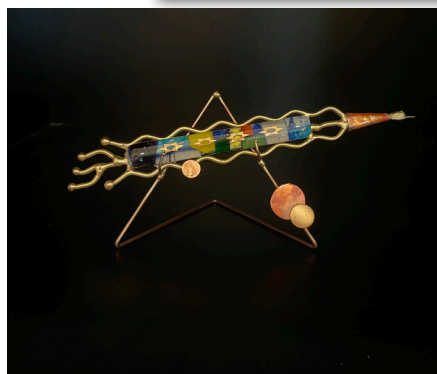
Sisterhood Book Bag will continue via Zoom. Please contact Nancy Suslov, [nisuslov@gmail.com](mailto:nisuslov@gmail.com), or Linda Wainick, [wainjl@aol.com](mailto:wainjl@aol.com), for more information.

**Thursday, February 17 at 1:30pm via Zoom**

"The Orphan's Daughter" by Jan Cherubin

*Facilitator: Linda Wainick*

**Rosenthal Judaica available  
in the Sisterhood Gift Shop**





# Temple Shalom Sisterhood MAH JONGG TOURNAMENT FUNDRAISER

**NEW DATE** Tuesday, March 8



Temple Shalom • 4630 Pine Ridge Rd. • Naples, FL 34119 • 239-455-3030

**8:30am - Registration & Continental Breakfast**

**9:00am - Play Begins**

**MORNING & AFTERNOON  
CASH PRIZES**

**DELICIOUS CHINESE BUFFET  
SPECTACULAR SILENT AUCTION**



*Questions? Contact Robin Mintz by email - [MintzMom@gmail.com](mailto:MintzMom@gmail.com)*

**Mail checks for \$55 per person payable to Temple Shalom Sisterhood:**

Robin Mintz

Attn: Mah Jongg Tournament

5938 Hammock Isles Circle, Naples, FL 34119

Name \_\_\_\_\_

Address \_\_\_\_\_

City, State, Zip \_\_\_\_\_

Phone \_\_\_\_\_ Email \_\_\_\_\_

I can bring a set \_\_\_\_\_ I will be East \_\_\_\_\_

*We request that attendees be vaccinated if eligible. Temple Shalom's COVID protocols will be observed.*





# TIKKUN OLAM



## Tikkun Olam Volunteers Chair Don Belmont

Our Temple is fortunate to have many congregants who are extraordinarily committed to *tikkun olam* (repairing the world). One such member is Liz Jaffe, who has turned her faith into action as Co-chair of Mitzvah Day and coordinator of several social action projects at Temple Shalom. Let's get to know her and find out what makes her tick.

### **How does *tikkun olam*/social action/social justice reflect your Judaism? (ie, why do you do it?)**

I have been involved with volunteering since in my childhood, when I was always eager to help my parents in their local community efforts. As I got older, I felt it important to help those around me who were not as fortunate as I. My efforts involved joining social justice organizations both in my Temple in Westchester, through UJA-Federation of NY, and after coming to Naples, through the Tikkun Olam Volunteers at Temple Shalom. I thrive on hands-on-activities.

My passion for social justice is integral to my Judaism. It really defines who I am and what I believe in. It also reflects how I view others in the community. If a friend cares about others and takes action to make their lives better, I respect them more than others who don't seem to care about making the world a better place.

### **What are your *tikkun olam* interests?**

My volunteer work at the Naples Senior Center with the Dementia/Respite program is very important to me. I see how difficult daily life is for the caregivers. My role as a volunteer affords them the respite time they need. In addition, it is fun spending the day with the clients.

### **What are some things that Temple Shalom congregants can do to help?**

At Temple Shalom, all members can volunteer to help the efforts of the TOV. I promise your efforts will be rewarded by the positive feeling you will have in helping others.

- Any time in February, you can drop off new shoes and sneakers for Laces of Love ( Info on the next page)
- On March 20, we will have another food drive at the Temple.
- And of course, Mitzvah Day has been moved to April 24, and that is a wonderful volunteer activity for the congregation.

Strong work, Liz! Thanks for all you do to help build a better world!

**For more information on the Tikkun Olam Volunteers,  
visit the Tikkun Olam page under Connect on the Temple Shalom  
website at [www.naplestemple.org](http://www.naplestemple.org)**

# TIKKUN OLAM

## Laces of Love

Throughout February, please help Temple Shalom collect shoes for Laces of Love. This is a local charity whose mission is to provide NEW sneakers to low income and disadvantaged children in Collier and Lee County Schools. You think it's not needed? Think again! Over 60% of kids in Collier and Lee Counties are designated as 'economically needy'!

All shoe sizes are needed, since Laces distributes shoes to needy kids from toddlers through high school seniors. Sneakers in adult size 1 – 11 (boys and girls) are especially needed. New shoes for Laces of Love may be dropped off at the Temple lobby throughout the month of February.

Shoes are distributed through Collier and Lee County public schools (via guidance counselors and school nurses) and through non-profit organizations that serve needy kids. The shoes are fitted and given in the privacy of the staff offices. Laces of Love is 100% volunteer. There are no paid staff.

For further information contact Liz Jaffe, [jaffeliz@gmail.com](mailto:jaffeliz@gmail.com), or [LacesOfLove.org](http://LacesOfLove.org).



**Our referral services are 100% FREE**



## Let Us, Help You!

**Honest, caring and knowledgeable advice about assisted living options ... AT NO COST TO YOU.**

With over 30 years of experience, we help eliminate the guesswork in choosing the right senior living community that meets your needs and preferences. We look beyond the fancy décor and evaluate facilities on:

- Quality of care and services
- Health care violations
- Financial viability
- Resident satisfaction
- Operational stability
- Overall lifestyle

Proudly serving Collier and Lee counties since 2008, we pride ourselves in being familiar with all the options in the area and the pros/cons of each. Let us use our expertise to help find the right 'solution' for you!



**239.595.0207**  
[seniorhousingsolutions.net](http://seniorhousingsolutions.net)  
Certain conditions apply. Please contact us for more information.



**Bruce B. Rosenblatt, Owner**  
*Senior Housing Expert*  
*Naples Daily News Columnist*

# A Look at Hunger & Food Insecurity in Our Community: What Can We Do to Help?

## A Series of Forums Presented by the Tikkun Olam Volunteers of Temple Shalom

Visiting experts will share with us the extent of hunger and food insecurity on the homeless and those dealing with ALICE (Asset Limits, Income Constricted & Employed) in Collier, Hendry, Glades, Okechobee and Lee Counties. They will offer insight on how Temple Shalom members and groups can help.



**Michael Overway**

Executive Director, Hunger and  
Homeless Coalition of Collier  
County

**Madison Mitchell**  
Community Impact Director  
United Way of Lee County



Zoom link can be found in the weekly email or  
contact the Tikkun Olam Volunteers at  
[TempleShalomTOV@gmail.com](mailto:TempleShalomTOV@gmail.com)

Wednesday,  
February 16  
1:30pm  
Via Zoom



**Please RSVP to [TempleShalomTOV@gmail.com](mailto:TempleShalomTOV@gmail.com)**



# TZEDAKAH

## Showing We Care

Contributions to Temple Shalom funds are wonderful ways to show your appreciation of family and friends, to celebrate happy occasions and to honor the memories of loved ones. We suggest a minimum donation of chai (\$18.00). With a minimum donation of chai, a notice of your gift will be sent to the honoree and mention will be published in The Voice. To make a donation, visit the donation page on the website at [www.naplestemple.org](http://www.naplestemple.org), or call the Temple office at 239-455-3030.

## Operations Funds

### General Fund

Supports Temple operations

### Capital Reserve

Maintains and enhances buildings and grounds

### Security Fund

Improves safety and security

## Worship Funds

### Memorial Fund

Donations in memory of loved ones

### William Freschel Kiddush Fund

Provides Kiddush lunch each Saturday following worship services. A \$250 donation sponsors Kiddush in honor of a special someone or occasion.

### Flower Fund

Bimah flowers each Shabbat. A \$200 donation sponsors flowers in memory or in honor of a special someone or occasion.

### Mitzvah Baskets Fund

Bimah food baskets for Shabbat. \$200

### Dr. Philip & Shirley Gilbert Music Fund

Enhances music at Temple Shalom

### Prayerbook Fund

Prayer books and Torah commentaries.

Prayer books - \$54, Torah commentary - \$100

High Holy Days prayer books (set) - \$118

## Stuart & Estelle Price A/V Fund

For the purpose of enhancing, improving and maintaining Temple Shalom's livestreaming capabilities

## Education Funds

### Adult Education Fund

Enhances adult education programs

### YESh Enrichment Fund

Augments educational programming for youth

### Perry L. Switzen Educational Fund

Religious School scholarships

### Polster YESh Scholarship Fund

Religious School scholarships

### Ben Calmenson Fund

Sponsors children to attend Jewish camp

### Joseph S. Weinfeld Faculty Development Fund

Enrichment activities for Religious School teachers

### Youth Activities Fund

Financial assistance for our youth to attend Camp Coleman, regional/ national youth conventions, and Israel summer experiences.

### Preschool Enrichment Fund

Special programs in Preschool

### Arby Lipman Children's Library

For the purchase of books, magazines subscriptions and supplies

### Jack and Charlotte Ward Family Children's Music Shelf

Audio and video music for children

### Artist-in-Residence Fund

To bring visiting musical artists to the Temple as an educational benefit to the membership

## Library Fund

### Rabbi James & Jane Perman Library

Books, magazine subscriptions and supplies

## Social Action Fund

### David and Lillian Thalenfeld Fund for Social Justice

Supports Temple's participation in social justice events and activities

## Oneg Shabbat Fund

Sponsors Onegs in celebration of an event or to honor someone. This fund is administered by Temple Shalom Sisterhood. Please contact Barbara Druckman at 239-405-1141.

## Endowment Funds

### General Endowment

Secures the future, enriches programs and provides for emergency needs of the congregation

### Honey Berkle Endowment

Supports the overall mission of Temple Shalom

### Paula Brody & Merrill Hassenfeld Endowment

Supports the Cantorial Music Program

### Graev Family Endowment

Supports the overall mission of Temple Shalom

### Kraus Scholar-In-Residence Endowment

Brings visiting scholars to the Temple

### Gracia & Merrill Kuller Family Endowment

Supports the overall mission of Temple Shalom

### Low Family Endowment

Secures the future of Temple Shalom and Reform Judaism in Southwest Florida

### Temple Shalom Sisterhood Endowment

Supports the Religious School (YESh)

### Truly Nolen Family Endowment

Supports the overall mission of Temple Shalom

### Janet & Howard Solot Endowment

To recruit and train future leaders of Temple Shalom

### Stephen & Bebe Saks Endowment

Supports the overall mission of Temple Shalom

## Clergy Funds

### Rabbi Miller's Discretionary Fund

For tzedakah, charitable purposes, and general enhancement of the Rabbi's work

### Cantor Azu's Discretionary Fund

For tzedakah, charitable purposes and general enhancement of the Cantor's work

### Rabbi Boxman's Discretionary Fund

For tzedakah, charitable purposes, and general enhancement of the Rabbi's work

# DONATIONS

As of January 18

## ABOVE & BEYOND

### In Memory Of

Gene Weisberg from Marv & Carol Weisberg  
Michael Seaman from Phyllis Seaman

## CANTOR AZU'S DISCRETIONARY FUND

### In Appreciation Of

The meaningful unveiling service for our beloved Chuck Eder from Dvorah Eder

### In Memory of

Sarah Gillerman Chervitz from Bill Maltby & Nancy Brown  
Our daughter, Robin Fisher Solis from David & Eloyse Fisher and family

## DR. PHILIP & SHIRLEY GILBERT MUSIC FUND

### In Honor Of

Michael Bendes' 80th Birthday from Donna & Avie Goldstein

### In Memory of

Jack Jacobsen from David & Cary Goodman  
Annie Quisefit Elbhar from Lydia Bond  
Ari Mazer from Carole Greene

## ENDOWMENT FUND

### In Memory of

Nathan R. Angoff, Evelyn K. Angoff, Marion B. Angoff, Harold Kanter, Dora C. Kanter, Rose Kanter, Dudley A. Weiss, Thelma A. Weiss, Max Akabas and Eva Akabas from Walter & Eleanor Angoff

## GENERAL FUND

### Best Wishes

To Randi Butterworth and Steve Hoey on their marriage from Gene & Bobbie Katz

### In Appreciation Of

Greg, Nancy, Ted, Mike, Ryan and my new congregation from Jeani Park

### In Honor Of

Gabriel and Jonah Miller on becoming a B'nai Mitzvah from David Millstein

Jack Wiadro on his birthday from Karen Ezrine

Judy Zahn on her birthday from Sandra Raizes

Martha Gross for always teaching me the beauty of our Jewish Heritage, inspiring me to love without reservation and to pursue passions for the sake of enjoyment and wonderment from Sarah and Charlie Chelnik

## GENERAL FUND

### In Memory of

Ray Katz from Claire Katz  
Samuel Spintman from Dan & Judi Spintman  
Sidney Bernstein from Ellen Garnick  
Marla Perlman from Ellen Katz  
Dorothy Appelbaum from Jack & Alice Gish  
Raymond Schwarzkopf from Karen & Jerry Pam  
Dylan Buckner, Vera Cooper, Howard Teitelbaum, Bessie Teitelbaum, Herman Teitelbaum and Dorothy Teitelbaum from Leonard Teitelbaum  
Martin Casper from Linda Hamburger  
Allan Polacheck from Terri Polacheck  
Joseph Angel from Victor & Jacqueline Meskin  
Julius Miller from Glenda Gordon

## MEMORIAL FUND

### In Memory of

Bonnie Emory from Michael & Ellen Hoffman

## MITZVAH DAY DONATIONS

### In Appreciation Of

Meals of Hope from Robert Davidson & Shellie Specter

### In Memory of

Jay Minzer from Ellen & Ed Wollman

## PERRY L. SWITZEN EDUCATIONAL FUND

### In Memory of

Bruce Sissler from Fara Singer  
Dylan Buckner from Gloria & Mark Mellman  
Betty S. Brown from Lori & Fred Brown

## PRAYERBOOK FUND

### In Honor Of

The birth of Sofie Siegel from Surelle & Barry Wind

### In Memory Of

Jack Jacobsen from Sherry, Lee & Stephanie Spielman

## RABBI BOXMAN DISCRETIONARY FUND

### In Memory Of

Abraham Alexander from Edward Alexander  
Eleanor Rubenstein from Mae Riefberg

As of January 18

# DONATIONS

## RABBI JAMES AND JANE PERMAN LIBRARY

### In Appreciation of

Your kindness from David & Eloyse Fisher and family

### In Memory of

Sadie Greenberg Pearson from Ellie Cantor

Frieda Klein and Stacey Klein from Ron Klein

## RABBI MILLER DISCRETIONARY FUND

### In Honor Of

Bris of Henry Jaffe from Louis Masur

Gabriel and Jonah on becoming B'nai Mitzvah from Sandra Raizes

### In Memory of

Gerald Grossman from Bobbie & Bernie Lublin

Jeffrey Randall from Fred and Lori Brown

Flora Reinhardt from Joyce & Paul Moskowitz

Ron Gross from Martha Gross

Lediscia Kidouchim Sabbag from Ralph & Brigitte Sabbag

Marty Cohn from Todd & Lauren Brodie

Jack Jacobsen from Todd & Lauren Brodie

## YOUTH GROUP ACTIVITIES FUND

### In Memory of

Aunt Betty Weiner from Jean & Lenny Nacht

“Tzedakah and acts of kindness are the equivalent of all the mitzvot of the Torah”

~ Jerusalem Talmud, Pe'ah 1:1

THANK  
YOU!

Live the Best  
of Paradise and...

*Embrace the Sunshine*



**Tracey Albert**

REALTOR®

Your Relocation Specialist

(239) 572-8643

Former Michigan Resident

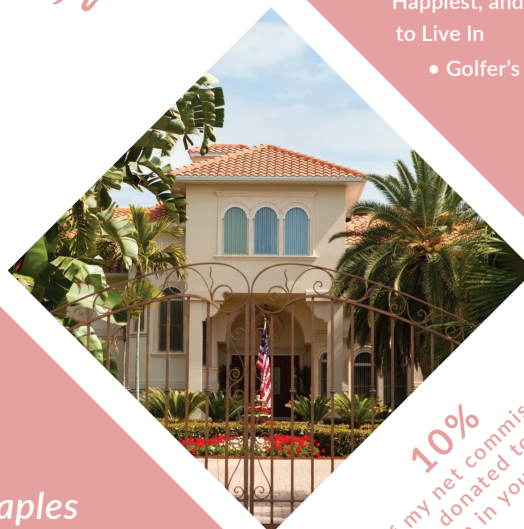
Naples, FL Resident

M.S.U. Alumni & W.M.U. Alumni

Tracey@LiveParadiseLiveNaples.com



Stay Connected



Your Naples  
**REAL ESTATE**  
Specialist

### Why Naples?

- Thriving Jewish Community
- Top-Rated Healthiest, Happiest, and Safest Places to Live In
- Golfer's Paradise

**10%**  
Of my net commission  
will be donated to Temple  
Shalom in your honor.



LIVEPARADISELIVENAPLES.COM



# ABOVE & BEYOND

As of January 18

**We Surpassed Our Goal!!**  
*Thank You!*

**\$380,000**



## **Torah Circle - \$18,000 & Above**

Dan & Linda Carp  
Carol Clarke  
Estelle & Stuart Price  
Stephen & Bebe Saks  
Joan Werhane

## **Rabbi's Circle \$10,000 - \$17,999**

Anonymous  
Morton & Myra Friedman  
Merrill Hassenfeld & Paula Brody  
Mark & Anne Rubin  
Donald & Arlene Shapiro  
Anthony & Ashley Solomon  
Howard & Janet Solot  
Michal Wiesler

## **Sponsors \$2,000 - \$4,999**

Lawrence & Tracey Albert  
Shelly Berkle  
Susan Bookbinder  
Karen & Marty (z"l) Cohen  
Dr. Leonard & Barbara Cutler  
Stanley & Karen Deutsch  
Deborah & Bob Fidel  
Howard & Rachel Gutman  
Elliot & Eloise Kaplan  
Howard & Gail Lanznar  
Robert & Barbara Levine  
Toby Kleban Levine  
David & Sue Lipman  
Robert & Frances Nossen

## **Supporters \$5,000 - \$9,999**

Edward Anchel (z"l)	Mae Riefberg
David & Stacy Braverman	Phyllis Seaman
Steven & Shelley Einhorn	David & Daryl Sissman
The Kaufman Family	Leonard Teitelbaum
Joel Lipman, MD	Bernard Weiss
Michael & Anna Peirce	Frank & Debbie Wyman

Steve & Sherry Pino  
Wayne & Toby Press  
Brian Ratzan  
Dr. Nathaniel & Susan Ritter  
Barbara Ross  
Fran St. Fleur  
Darren Samuel & Tammy Strohl-Samuel  
Marc & Joan Saperstein  
Ivan Seligman, MD  
Irene Smith  
Robert & Arlene Subin  
Eric Wasser & Zdenka Tichy  
Mark & Leslie Wasserman  
Jay & Susan Weiss

## **Pillars \$1,000 - \$1,999**

Susan Adler  
Marcy Aizenshtat  
Les & Carol Appel  
Cantor Donna & Steve Azu  
Phyllis Barolsky  
Jane Purdy Berger  
Iris Bland  
Adrienne Block  
Janet & David Blum  
Todd & Lauren Brodie  
David Citrin  
David Dembo  
Marc & Jennifer Fleischer  
Jack & Alice Gish  
Ellen & Steve Goldberg  
Linda & Mark (z"l) Grusin  
Alan & Liz Jaffe  
Ron & Lin Klein  
Geoffrey & Fran Kroll  
Gracia Kuller  
Michelle Levine-Troupp  
Mary-Beth Levitz  
Simone & Scott Lutgert  
Rabbi Adam Miller & Jennifer Siegal-Miller  
David Millstein  
Judith Nevai  
Judi Palay  
Jane & Rabbi Jim Perman  
Sandra Rick  
Michael & Naida Rodman  
Richard & Elaine Rosen  
Steven & Michele Rubin  
Rabbi Ariel Boxman & Asher Saida  
Jane Schiff  
Cindi & Brad Schrum  
Mark & Judy Copeland Schulman  
Joyce Shapiro Steckman  
Mark & Susan Sherwin  
Russell & Gail Smith  
Robert & Myra Snyder  
Michael & Arlene Sobol  
Stephen N. Solarsh  
Dan & Judi Spintman  
Sheldon & Elizabeth Starman  
Richard M. Treiser  
Jerome & Linda Wainick  
Nancy White  
Debbie Zvibleman

## **Friends - \$500 - \$999**

Anonymous (2)  
Alvin & Sheila Becker  
Bennett & Mardelle Berman  
Rita Bernstein  
Bonnie Bodin  
Anthony Clark & Jane Kessler  
Burton & Miriam Cohn  
Barbara Druckman  
David Goldstein  
Ken & Diana Goldstein  
Bruce Graev  
Linda Hamburger  
Larry & Wendy Israelite  
Gene & Bobbie Katz  
Frances Kline  
Henry Kraus  
Samuel Levine  
Michael & Carol Levy  
Moises & Janina Levy  
Rochelle & Jacob Lieb  
Richard & Marianne Matties  
Paul & Joyce Moskowitz  
Charles & Judith Picus  
Debbie Laites & Ben Z. Post  
Jack & Susan Rabin  
Gilbert Rashbaum  
Wendy Reidel  
Lyle & gloria Rosenzweig  
Michael Rubner  
Carole Saks  
Myra Shapiro  
Bruce & Carol Sherman  
Bruce & Barbara Winer  
Barbara Winthrop

*Thank You!*

### Builders- \$250 - \$499

Edward & Cheryl Alexander  
William & Randi Barr  
Robert & Shirley Bassin  
Thomas & Barbara Carlstrom  
Phil & Judy Ciorciari  
Lois & Larry Cohen  
Marcy Cotton  
Ron & Kathy Emanuel  
Mignon & Stanley Farb  
Alan & Eva Freeman  
Esther & Joshua Garfield  
Howard & Barbara Glicker  
Ted Goldberg & Jeri Hall

Michael & Justina Gordon  
Lenore Greenstein  
Matty Hasson  
Pepi Herbst  
Michael & Susan Horowitz  
Dr. David & Fredda Isaacson  
Andy & Di Karpman  
Dale & Lisa Katz  
Ellen Katz  
Roslyn & Albert Katz  
Jo Ann Kravitz  
Martin & Hilda Levine  
Godfrey Levy (z"l)

Harriet & Merlin Lickhalter  
Rosealie Liebovich-Hyman  
Robert & Leda Lubin  
Ralph & Bonnie Mandell  
Ida & Jeffrey Margolis  
Joel & Susan Pittelman  
Sandra Raizes  
Lyle & Gloria Rosenzweig  
Paul Rosofsky  
George & Cynthia Rubin  
Norman & Lisa Vogel  
Allen & Marla Weiss  
Mel & Judy Zahn

### I/We Care

Stephen Bacharach  
Eleanor Bonder  
Jay & Mona Brodsky  
Randi Butterworth  
Barbara Cohen  
Harvey & Katie Cohen  
Kyle & Rachel Cohen  
Neil & Judy Cohen  
Pedro Cruz  
Allen Danzig & Lynn Katz Danzig  
Robert Davidson & Shellie Specter  
Celia Deifek  
Karen Ezrine  
Martin Feins  
Glenn & Jeanette Fischer  
Julie Fischer  
David & Eloyse Fisher  
Pearl Fishman-Thall  
Maxine Gould  
Susan & Thomas Hager  
Jason & Ellen Harris  
Robert Hayum

Sylvie Heyman  
Rick Holsbeke  
Michael Horowitz  
Fern & Andrew Jaffe  
Nancy Kahn  
Leatrice Kaye  
Ellen & Bob Kliman  
Ira & Barbara Kushnir  
Bernard Lashinsky  
Gale Lazarus  
Victor Lucas  
Phyllis Luts  
Kenneth & Marcy Malc  
Bill Maltby & Nancy Brown  
Nancy & Tearle Meyer  
James & Judy Miller  
Robin & Andy Mintz  
Jean & Len Nacht  
Martin Nicolau  
Stacy Nicolau  
Samuel Oshry  
Terri Polacheck

Maxine Rachelle  
Barbara Ross  
Martin & Elaine Samuels  
Sandra & Charles Sanfilippo  
Avra Schwab  
Hank & Diane Schwartz  
Ira & Robin Secouler  
David & Gay Silberg  
Arthur & Susan Sissman  
Russell & Janet Sobelman  
Steve & Valerie Stewart  
Ann & Michael Swartz  
Samuel & Ann Varsano  
Andrew & Sydelle Weinberger  
Marv & Carol Weisberg  
Shelly & Jan Whitman  
Surelle & Barry Wind  
David & Carol Wolfe  
Ron & Sherrill Yasbin  
Steven & Suzann Yussen

*Thank You!*



# February 2022

Sunday	Monday	Tuesday	Wednesday	Thursday	Friday	Saturday
		<b>1</b> <b>Sisterhood Board meeting 10:00am*</b>  <b>Melton Elective (Sinai to Seinfeld) 10:00am</b>  <b>Adult Hebrew class 2:00pm</b>	<b>2</b>	<b>3</b> <b>Melton Elective (Medical Ethics) 10:00am</b>  <b>Wise Aging 1:00pm</b>  <b>Melton Elective (Pray it Forward) 7:00pm*</b>	<b>4</b> <b>Baby &amp; Me 9:00am</b>  <b>Shabbat evening service 7:30pm</b>	<b>5</b> <b>Torah Study 8:30am*</b>  <b>Shabbat morning service 10:00am</b> <i>Bat Mitzvah of Hailey Hinchliffe</i>  <b>Shabbat ShaPlay 10:00am</b>
<b>6</b> <b>YESh Judaics 9:00am</b>  <b>Confirmation class 9:00am</b>  <b>Garden of Eating (Kindergarten) 9:00am</b>  <b>YESh Hebrew 11:30am</b>	<b>7</b> <b>Baby &amp; Me 9:00am</b>  <b>Jewish Yoga 11:00am*</b>	<b>8</b> <b>Melton Elective (Sinai to Seinfeld) 10:00am</b>  <b>Adult Hebrew class 2:00pm</b>	<b>9</b>	<b>10</b> <b>Melton Elective (Medical Ethics) 10:00am</b>  <b>Jewish Spirituality 1:00pm</b>  <b>Melton Elective (Pray it Forward) 7:00pm*</b>	<b>11</b> <b>Baby &amp; Me 9:00am</b>  <b>Beach Shabbat 5:30pm</b> <i>Lowdermilk Park</i> <i>No service at Temple Shalom</i>	<b>12</b> <b>Torah Study 8:30am*</b>  <b>Shabbat morning service 10:00am</b>
<b>13</b> <b>YESh Judaics 9:00am</b>  <b>Shalom Yeladim 9:00am</b>  <b>YESh Hebrew 11:30am</b>	<b>14</b> <b>Baby &amp; Me 9:00am</b>  <b>Jewish Yoga 11:00am*</b>	<b>15</b> <b>Melton Elective (Sinai to Seinfeld) 10:00am</b>  <b>Adult Hebrew class 2:00pm</b>  <b>Executive Committee meeting 7:30pm*</b>	<b>16</b> <b>Stories of Music 10:00am*</b>  <b>Hunger &amp; Food Insecurity Forum 1:30pm*</b>	<b>17</b> <b>Melton Elective (Medical Ethics) 10:00am</b>  <b>Wise Aging 1:00pm</b>  <b>Sisterhood Book Bag 1:30pm*</b>	<b>18</b> <b>Baby &amp; Me 9:00am</b>  <b>Soulful Shabbat evening service 7:30pm</b>	<b>19</b> <b>Torah Study 8:30am*</b>  <b>Shabbat morning service 10:00am</b>
<b>20</b> <b>No YESh</b>	<b>21 President's Day</b>  <b>Preschool closed</b> <b>Temple office closed</b>	<b>22</b> <b>Melton Elective (Sinai to Seinfeld) 10:00am</b>  <b>Adult Hebrew class 2:00pm</b>  <b>JScreen Presentation 2:30pm*</b>  <b>Board meeting 7:30pm*</b>	<b>23</b>	<b>24</b> <b>Melton Elective (Medical Ethics) 10:00am</b>  <b>Jewish Spirituality 1:00pm</b>  <b>Melton Elective (Pray it Forward) 7:00pm*</b>	<b>25</b> <b>Baby &amp; Me 9:00am</b>  <b>Shabbat evening service with Scholar-in-Residence 7:30pm</b>	<b>26</b> <b>Torah Study 8:30am*</b>  <b>Shabbat morning service 10:00am with Scholar-in-Residence program</b>
<b>27</b> <b>YESh Judaics 9:00am</b>  <b>Scholar-in-Residence 9:30am</b>  <b>YESh Hebrew 11:30am</b>	<b>28</b> <b>Baby &amp; Me 9:00am</b>  <b>Jewish Yoga 11:00am*</b>  <b>Israel Book Discussion Group 11:00am*</b>					

Programs and events with an \* take place via Zoom. All events are subject to change. Please check the calendar on the Temple Shalom website and your emails for updated information.

# March 2022

Sunday	Monday	Tuesday	Wednesday	Thursday	Friday	Saturday
		<b>1</b> <b>Sisterhood Board meeting 10:00am*</b>  <b>Melton Elective (Sinai to Seinfeld) 10:00am</b>  <b>Adult Hebrew class 2:00pm</b>	<b>2</b> <b>The Haggadah 10:00am*</b>  <b>Solot Leadership Academy 7:00pm</b>	<b>3</b> <b>Melton Elective (Medical Ethics) 10:00am</b>  <b>Wise Aging 1:00pm</b>  <b>Melton Elective (Pray it Forward) 7:00pm*</b>	<b>4</b> <b>Baby &amp; Me 9:00am</b>  <b>Shabbat evening service 7:30pm</b>	<b>5</b> <b>Torah Study 8:30am*</b>  <b>Shabbat morning service 10:00am</b> <i>Bat Mitzvah of Margot Solomon</i>
<b>6</b> <b>YESh Judaics 9:00am</b>  <b>Confirmation class 9:00am</b>  <b>YESh Hebrew 11:30am</b>  <b>Seder Plate Workshop 1:00pm</b>	<b>7</b> <b>Baby &amp; Me 9:00am</b>  <b>Jewish Yoga 11:00am*</b>	<b>8</b> <i>Sisterhood Mah Jongg Tournament</i>  <b>Melton Elective (Sinai to Seinfeld) 10:00am</b>	<b>9</b> <b>The Haggadah 10:00am*</b>  <b>Solot Leadership Academy 7:00pm</b>	<b>10</b> <b>Melton Elective (Medical Ethics) 10:00am</b>  <b>Jewish Spirituality 1:00pm</b>  <b>Melton Elective (Pray it Forward) 7:00pm*</b>	<b>11</b> <b>Baby &amp; Me 9:00am</b>  <b>Shabbat evening service 7:30pm</b>	<b>12</b> <b>Torah Study 8:30am*</b>  <b>Shabbat ShaPlay 10:00am</b>  <b>Shabbat morning service 10:00am</b>
<b>13</b> <b>No YESh</b>	<b>14</b> <b>Baby &amp; Me 9:00am</b>  <b>Jewish Yoga 11:00am*</b>	<b>15</b> <b>Melton Elective (Sinai to Seinfeld) 10:00am</b>  <b>Executive Committee meeting 7:30pm*</b>	<b>16</b> <i>Erev Purim</i> <b>The Haggadah 10:00am*</b>  <b>Tikkun Olam Volunteers meeting 1:30pm*</b>  <b>Purim Shpiel 7:00pm*</b>	<b>17</b> <i>Purim</i> <b>Melton Elective (Medical Ethics) 10:00am</b>  <b>Wise Aging 1:00pm</b>  <b>Sisterhood Book Bag 1:30pm*</b>	<b>18</b> <b>Baby &amp; Me 9:00am</b>  <b>Hadassah Shabbat 7:30pm</b>	<b>19</b> <b>Torah Study 8:30am*</b>  <b>Shabbat morning service 10:00am</b>
<b>20</b> <b>YESh Judaics 9:00am</b>  <b>Drop-off Food Drive 9:00am</b>  <b>Purim Palooza 9:30am</b>  <b>YESh Hebrew 11:30am</b>	<b>21</b> <b>Baby &amp; Me 9:00am</b>  <b>Jewish Yoga 11:00am*</b>	<b>22</b> <b>Board meeting 7:30pm*</b>	<b>23</b> <b>The Haggadah 10:00am*</b>  <b>Solot Leadership Academy 7:00pm</b>	<b>24</b> <b>Melton Elective (Medical Ethics) 10:00am</b>  <b>Jewish Spirituality 1:00pm</b>  <b>Melton Elective (Pray it Forward) 7:00pm*</b>	<b>25</b> <b>Baby &amp; Me 9:00am</b>  <b>Shabbat evening service 7:30pm</b>	<b>26</b> <b>Torah Study 8:30am*</b>  <b>Shabbat morning service 10:00am</b>
<b>27</b> <b>No YESh</b>  <b>A Noteworthy Night 6:15pm</b> <i>Major fundraiser</i>	<b>28</b> <b>Baby &amp; Me 9:00am</b>  <b>Jewish Yoga 11:00am*</b>  <b>Israel Book Discussion Group 11:00am*</b>	<b>29</b>	<b>30</b>	<b>31</b> <b>Melton Elective 10:00am</b>  <b>Jewish Spirituality 1:00pm</b>		

Programs and events with an \* take place via Zoom.  
All events are subject to change. Please check the calendar on the Temple Shalom website and your emails for updated information.

THE VOICE

Temple  Shalom

4630 Pine Ridge Road  
Naples, Florida 34119

Non-Profit Org

U.S. Postage

**PAID**

Naples, FL

Permit No. 127