

Temple Emeth

Bulletin

Temple Emeth of Teaneck, New Jersey
An Affiliate of the Union for Reform Judaism
Serving Reform Congregations in North America

Volume 71, Number 5

www.emeth.org

Shevat/Adar 5778 February 2018

PURIM 2018

Share the joy of Purim with your Emeth friends and neighbors by sending
SHALACH MANOT

You have received your Shalach Manot
order packet in the mail!
Order forms are available at emeth.org
or from the Temple office.
Please order now!

THE
DEADLINE
TO ORDER
HAS BEEN
EXTENDED TO
FEBRUARY 2

We'll need your help with this
exciting annual fundraiser.

Mark your calendar now

- Thursday, February 22 - Packing Shalach Manot
any time between 1:00 - 5:00 at the Temple,
or until we're done
- Sunday, February 25 - Delivering Shalach Manot
at your convenience all over Bergen County

To volunteer or ask any questions, contact
Judy at 201-836-0260 or Jsfoxrk@aol.com,
or Eva at 201-836-1497 or
quitocutie@aol.com

New Members
are especially encouraged to help -
it's a fun way to meet new people!

TEMPLE E METH

1666 Windsor Road Teaneck, New Jersey 07666

www.emeth.org

Main Office # 201 833-1322

School Office # 201 833-8466



RABBI	Steven Sirbu
CANTOR	Ellen S. Tilem
RABBI EMERITUS	Louis J. Sigel z”l
RELIGIOUS SCHOOL EDUCATOR	Dora Geld Friedman

ssirbu@emeth.org
cantoret@yahoo.com

dfriedman@emeth.org

TEMPLE ADMINISTRATOR	Rochelle Rudnick
BOOKKEEPER	Maryanne Tursi
ADMINISTRATIVE ASSISTANT	Elaine Hanan
SCHOOL ADMINISTRATOR	Barbara Shater

RRudnick@emeth.org
mtursi @emeth.org
ehanan@emeth.org
bshater@emeth.org

PRESIDENT.	Amy Abrams
FIRST VICE-PRESIDENT	Lynn Chaiken
SECOND VICE-PRESIDENT.	Felipa Bernard
THIRD VICE-PRESIDENT	Stephen Friedman
SECRETARY.	Lisa Eig
ASSISTANT SECRETARY.	Jill Kantor
FINANCIAL SECRETARY.	Michael Robinson
ASSISTANT FINANCIAL OFFICER.	Michael Goldberg
TREASURER.	James Sandler

amyabrams1@gmail.com
lynn_chaiken@yahoo.com
flipbern@gmail.com
Sjfriedman@Winstonprep.edu
lisa_eig@yahoo.com
bjkantor@verizon.net
mdrdds@optonline.net
jpgr999@aol.com
jimsandler@gmail.com

EDITOR, PHOTOGRAPHER, LAYOUT & GRAPHIC DESIGNER:

Barbara Balkin dkrm505@yahoo.com

ASSISTANT EDITORS: Marion Wolf and Judy Fox

ADVERTISING: Audrey Seares aseares54@aol.com

<i>Bulletin Deadlines</i>			<i>Mid-Month Mailing Deadlines</i>	
<u><i>Month</i></u>	<u><i>Deadline Date</i></u>	<u><i>Publication Date</i></u>	<u><i>Deadline Date</i></u>	<u><i>Publication Date</i></u>
October	September 15	October 2	October 10	October 18
November	October 15	November 1	November 8	November 15
December	November 15	December 1	December 8	December 15
January	December 15	January 2	January 10	January 16
February	January 15	February 1	February 8	February 15
March	February 15	March 1	March 8	March 15
April	March 15	April 2	April 9	April 16
May	April 15	May 1	May 8	May 15
June	May 15	June 1	June 8	June 15

From the Editor - In order to ensure that everyone's articles are published in the Bulletin please limit them to half a page.

Remember, flyers are for the Mid-month mailing and should be sent to

Rochelle Rudnick at RRudnick@emeth.org cc: ehanan@emeth.org

Material for the Bulletin is welcome and essential for the success of the publication; however, it is necessary to honor the deadlines as listed.

For the Bulletin mailings, all material **must** be submitted by **8:00** p.m. on the date of the deadline. Please submit all material by email to Barbara Balkin at dkrm505@yahoo.com and use **Times New Roman** font, **12 pt.** in a Word document file.

For Mid-month mailings, all materials are due by **4:00 p.m.** on the date of the deadline.

The Temple Emeth Bulletin is published monthly
from September through June.

Advertising Rates for Ad Size 2" x 3 1/2"

	Member	Non-Member
1 Month	\$ 55	\$ 75
5 Months	\$250	\$350
10 Months	\$330	\$450

For additional information, call (201) 833-1322

Message From the Rabbi

As winter reaches toward spring, it seems a human impulse to step out and do something absurd. I think it is no coincidence that Mardi Gras, St. Patrick's Day, and Purim usually fall within a few weeks of each other. The cabin fever of winter overflows just before the first buds of spring.

Purim is a perplexing holiday to me. On one hand, the costumes, carnivals, and silliness conspire to make it a kids' holiday. On the other hand, the themes of the Book of Esther, with its sexual innuendo, palace intrigue, and excessive violence, tell a story that is best appreciated by adults.

One of the key questions as we read the Book of Esther is how to interpret it. Is it to be understood literally, like many Jews interpret the Torah? I don't think so. Literarily, the book is a farce, with characters so two-dimensional and situations so unbelievable that the lesson is not to be found in its accuracy. Some scholars have said that the Book of Esther is the Diaspora's greatest contribution to the Bible, while others say that the book was written in Eretz Yisrael and is actually a polemic against Diaspora life.

So where does that leave us? Though Purim is far from my favorite holiday (for the record it is Sukkot) I have come to appreciate certain aspects about the holiday.

The Book of Esther is the only book that does not mention God. There is one verse—"Salvation and deliverance will come to the Jews from another Place" (Esther 4:14)—that implies the presence of God, but never uses God's name. As a Reform Jewish movement, we

have diverse views about God and God's role in the world. Some are confirmed atheists, while others believe without being able to explain why. To have a book of the Bible that mirrors our own theological struggles is empowering.

This is one of the few places in our history where a Jewish woman is the hero. With Mordecai's help, Esther appreciates her ability to effect change, and we get to watch her grow into her role as queen. She knows her enemy is sly and readies a trap so that he is caught by his own words. Esther is the successor to Vashti, who in her way is a role model for resistance against a male authority figure who seeks to demean and objectify her.



Rabbi Steven Sirbu

I also like that even today, Purim offers us an opportunity to carry on a tradition, virtually unchanged, from the Bible. There is no Shabbat challah in the Torah, nor are there Chanukah candles. But the tradition of sending Shalach Manot, packages of food, to one another to celebrate the victory, is essentially the same as it is in Esther 9:22. It is a way to share with one another, strengthening the bonds of community.

Our Purim service is Wednesday, February 28 at 7:00 p.m. On Sunday, February 25, we have two events to prepare us for Purim. At 9:00 a.m. I will be teaching a class called "The Secret Megillah," and at 10:00 a.m. our Purim Carnival will begin. On February 25, we will also distribute the Shalach Manot packages to our fellow Temple members. I look forward to seeing you there as we study, share and celebrate this perplexing—and joyous—holiday.



SAVE THE DATE

Viewpoints Artist-in-Residence Weekend

Join us for an Artist-in-Residence Weekend March 9 to 11, 2018
when Temple Emeth Viewpoints, in collaboration with Kulanu, presents
"In Thy Tent I Dwell"
a performance piece by Jonatas Chimen.

From the Religious School

“Here on Earth too God lives, not in Heaven alone. A beautiful tree, a newly plowed field,
in them you will find God’s likeness.” (Saul Tchernikovsky – 19th Century Jewish Poet)

The Midrash tells us that when God created Adam and Eve, God took them to see all the trees of the Garden of Eden and instructed them, “See how they are. Everything that I have created, I created for you.” This Midrash serves as the inspiration for our Religious School when we celebrate the holiday of Tu B’Shevat. On Tu B’Shevat, we celebrate the rebirth of nature, the rebirth of Israel, and the beauty of everything God has created. We affirm and recognize our responsibility towards each living thing. We express in song and story our love for the land of Israel, the “good land.”



Dora Geld Friedman

On Sunday February 4, the students and families of grades 3 and 4 will gather together for a Family Education program and Tu B’Shevat Seder led by Rabbi Sirbu, Cantor Tilem, Religious School teachers, and Adam Kohane. Our students are also exploring the history and unique “personalities” of the trees of Israel – the olive, eucalyptus, Jerusalem pine, and the almond tree which begins to bloom on Tu B’Shevat.

We look forward to welcoming our K – 4 families for Shabbat Dinner and Service on February 2, 2018 beginning promptly at 6:00 p.m. We will enjoy a festive meal followed by Shabbat Services when our 4th

grade students will receive their prayerbooks, *Siddurim*. This special Siddur presentation ceremony and holiday celebrations continue to plant the seeds for Jewish growth, engagement, and appreciation of the richness and depth of our traditions.

B’vracha,
Dora Geld Friedman

Looking Ahead:

Friday, February 2- Shabbat Dinner grades K – 4 @ 6:00 & Kabbalat Siddur Service @ 7:30

Saturday, February 3 – B’nai Mitzvah Learners’ Service for 6th grade families @ 10:30

Sunday, February 4 – Family Education & Tu B’Shevat Seder grade 3 & 4 families @ 9:00

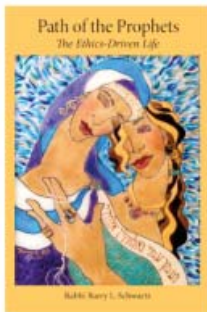
Wednesday, February 7 – Junior Youth Group grades 5 -7 @ 6:00

Sunday, February 11 – Tfila & Shira, 6th grade leading @ 9:15 grades 3 – 7

Sunday, February 18 – NO SCHOOL

Sunday, February 25 – Regular classes @ 9:00 and Purim Carnival @ 10:00

Sunday, February 25 – Rabbi Sirbu presents “The Secret Megillah” @ 9:00



Sweet Tastes of Torah

Sponsored by the North Jersey
Board of Rabbis

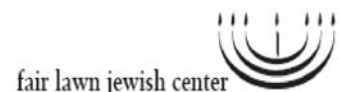
Saturday, February 3

Registration opens at 6:30 p.m.

Havdalah at 6:50 p.m.

Host congregation: Fair Lawn Jewish Center

10-10 Norma Avenue, Fair Lawn



Keynote: Truth to Power: Prophetic Ethics in Troubled Times

In an age of scandal, the words and examples of the prophets of Israel offer us an alternative - the ethics-driven life. What lessons can we learn from our ancestors and how can we apply them today? Breakouts will focus on such topics as the ethics of faith, healing, forgiveness, civil disobedience, equality, repentance, forgiveness. Based on his new book, “Path of the Prophets: The Ethics-Driven Life,” Rabbi Barry L. Schwartz will bring this ancient wisdom to life in a new way.

Sweet Tastes of Torah, an evening of community learning, is excited about our new format, which will begin with our keynote, followed by breakouts around the theme presented, as well as our ever-dynamic range of classes.

Enjoy 2 one-hour sessions of your choice, followed by delicious desserts, socializing, and Israeli folk dancing.

\$15 per person pre-registered by January 31; \$20 at door

Register online at www.sweettastesoftorah.weebly.com or register by check, made payable to:

North Jersey Board of Rabbis 32 Franklin Place, Glen Rock, NJ 07452

For security reasons, please include names of all attendees when registering.

Questions? Contact Nickie Falk at: sweettastesoftorah@gmail.com

Message from President Amy Abrams

We don't usually use this space to talk about mundane details like maintenance and repairs. I'm going to do so this month because your understanding of all aspects of our finances is crucial to the success of our Voluntary Commitment system. If you don't know what we're doing, you won't know what we need you to pledge. At the risk of causing your eyes to glaze over, then, here's some detail on what's going on with your Temple's physical plant.

In major projects, as part of our security system upgrade, our front door system is going to change over to a card or key fob entry. This new system is funded by a Homeland Security Grant (thank you, Steve Chaiken, Sue Keusch, and Marc Chelemer!). Instead of entering a code number on a keypad as we do now, you will need a swipe card or electronic fob to enter the building. As much as I dislike carrying another card around, this system has so many benefits that I agreed I could live with it. We can stop trying to remember new code numbers every year. We won't have to worry about our code being given out to strangers when non-members hold events in our building. Since we can program the cards ourselves, we can issue them to our tenants permitting entry only during certain hours. All of this will greatly increase our security while giving us more flexibility.

Of course, we will continue to have greeters for services and major events of our own, so if you forget your card, you'll still be able to get into the building. And you will be able to contact the office from the front door if you need help. Watch your email for information on how to get your new card or fob (your choice) when the system is operational.

We try to do a lot of the work on the building when the Bergenfield school in our school wing is on vacation, so during their winter break all of the lighting in the building was changed over to LED bulbs. This work is covered by the NJ Direct Grant I have mentioned previously. The work funded by the second part of the Grant, replacing half of our HVAC units, will be completed during the February school break.

We plan to replace the rest of the HVAC units while the

crane is onsite. All of them have been requiring repairs regularly, as they are reaching the end of their 20-year useful lives. The grant we received from the Leonard B. Kahn Foundation will cover nearly 75% of the cost for all units, including our share of the NJ Direct portion. We expect to save money on both repairs and energy efficiency during the coming years.

We are experiencing a small slew of building maintenance issues, as will happen from time to time. A main

circulating pump broke in December, causing one of the classrooms to be very cold for a few days. Several of the pews in the Sanctuary have to be secured to the concrete below the carpet so they don't rock. We replaced a broken toilet in the Family Room bathroom (which did allow us to install a real raised handicapped toilet). In the spring we will add weatherproof siding to several spots along the outside of the building. Three space heaters also needed to be replaced. These

types of items are the reason the capital reserves in our budget are so critical. Collectively these repairs will cost us around \$8,000.

Are your eyes still open?

Looking ahead, February will be a very busy month. Etz Chayim will participate in the Junior Choir Festival on Feb 4 at Beth Sholom. We are co-sponsoring an AIPAC presentation at Keter Torah on Feb. 6. Purim is coming up at the end of the month, and we're spreading out the fun. Our annual Purimspiel will be after services on February 23. The Purim Carnival and Shalach Manot deliveries will be on February 25. Finally, the Megillah reading will be on Wednesday, Feb 28 at 7:00 p.m. Get your costumes and your groggers ready!

Remember we have an exciting Artist-in-Residence program coming up March 9-11, with Jonatas Chimen sharing his work on immigrants and hidden Jews. Even further in the future, the final One Book One Community event, featuring author and chef Michael Solomonov, has now been scheduled for May 17. Accordingly, our Annual Congregational Meeting is moved to June 7. Mark your calendars now!



Amy Abrams

Amy Abrams

ONE BOOK ONE COMMUNITY



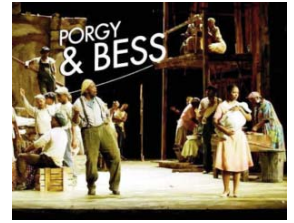
One Book One Community Shabbaton

Torah study with the topic of Dining in the Jewish Tradition; luncheon organized by Linda Poskanzer, with recipes from the book "Zahav" prepared by Temple members, coordinated by Lynne Graizel; followed by a viewing and discussion of the documentary, "In Search of Israeli Cuisine" starring Michael Solomonov.



OPERA SHABBATON

Hailed as the first American opera, Gershwin's *Porgy and Bess* portrays the loves and lives of African Americans on Catfish Row. You know the story. Bess, a beautiful drug addict, is torn between her brutish boyfriend Crown and her growing love for the charming, disabled beggar Porgy. You love the music...and Gershwin composed music entwining Negro spirituals, Jewish cadences, and jazz throughout the entire score. Consider the impact this American folk opera had in 1935 and learn about the controversies surrounding the opera in subsequent years.



You have never seen the opera? Or you want to see it again? On March 3, 2018 at 12:45 p.m. bring seat cushions so that you are comfortable while listening to "Summertime," "It Ain't Necessarily So," and many memorable arias. Met star Eric Owens and Laquita Mitchell lead the cast supported by The San Francisco Orchestra and Chorus.

Reserve early! We expect a large audience and seating is limited. Please complete and submit the reservation form below along with your check.

For additional information contact:

Elaine Bergman at EJB1734@msn.com
or Linda Poskanzer at lindaposkanzer@msn.com.

RSVP for March 3rd Opera Shabbaton

Names: _____

Number Attending @ \$20 each (before Feb. 25) _____
after Feb. 25 - @ \$30 each: _____

Total enclosed: \$ _____

Names of those coming with you: _____

Phone#: _____

E-mail: _____



Social Action in Action

Family Promise –We hosted one family (a mother and four children), and fortunately they moved to an apartment one day before the week was over! Thanks to 23 Temple members, as well as Congregation Beth Sholom, the Ethical Culture Society of Bergen County, and Covenant Life Ministries for their assistance. It takes a village! We hope that you will join us from April 29th through May 6th as we again perform this mitzvah!

Mitzvot of the Month –This month all food collected will be given to the Center for Food Action.

January 24th is Bergen County's Homeless Action Day. We are collecting NEW ONLY winter coats and jackets for homeless people. Our generosity will be greatly appreciated. Place contributions in the marked box in the hallway.

Oil Train Update - Governor-elect Murphy is sympathetic to this cause and will probably sign the legislation once it is passed, especially after the recent derailment in Union, New Jersey.

Sanctuary Committee - There are more refugees than ever in need of services, especially housing, while they establish themselves. We hope, through the Northern New Jersey Sanctuary Committee, to provide a "humanizing" background about those in need. Watch for future information.

HIAS Welcome Campaign - Between 40 and 50 people attended a postcard-writing evening at Temple Emeth in mid-December. Almost 600 postcards were mailed to elected officials, urging them to continue the fight to support immigrants and undocumented residents. A speaker from HIAS will speak at Temple Emeth on Friday night, January 26.

**Next meeting is scheduled for Sunday,
February 4th at 9:45 a.m.
ALL ARE WELCOME!**



Cantor Tilem and Rabbi Sirbu with Allison Salzman, who spoke at services on December 29th.

Save The Date: **DINNER DANCE**

----→ **Saturday June 2, 2018** ←----

7:00 - 11:00 p.m.

*Join us for a celebratory evening
of dinner and dancing to honor
three of our esteemed past presidents:*

Paula Dillon

Jill Kantor

Howard Lieberman

*Volunteers are needed to assist with
all aspects of the Dinner Dance -
specifically, journal ads, silent auction
items, and day of set-up.*

Please consider lending your support to
help make this an evening to remember!

For more information contact:

Julie Weisman:

Julie @ flavorganics.com

Lisa Eig:

lisa_eig@yahoo.com

"The Secret Megillah"

**Special one-time, one-hour class on Sunday,
February 25 from 9:00 to 10:00 a.m.
with Rabbi Sirbu**

The Scroll of Esther has been "sanitized" to make it appropriate for young children at Purim. But the book has drinking, sex, and abundant violence that are not found in the kid-friendly version. Rabbi Sirbu will lead a text study on what is missing from the abridged edition, why the original author put it in, and what goals we serve by taking it out. All are welcome, but Religious School parents are especially encouraged to attend this special session, which will dismiss as our Purim Carnival begins. Bagels will be served.

Services and S'machot

18th of Shevat 5778
Friday, February 2

Shabbat Yitro
Family Shabbat Service at 7:30 p.m.
Fourth Grade Kabbalat Siddur Ceremony

Saturday, February 3

Torah Study at 9:00 a.m.
B'nai Mitzvah Learner's Service at 10:30 a.m.

Sweet Tastes of Torah at 6:30 p.m. at Fair Lawn Jewish Center/Congregation B'nai Israel

Torah Portion - Yitro, Exod. 18:1 - 20:23

Haftarah - Isaiah 6:1 - 7:6; 9:5 - 9:6

25th of Shevat 5778
Friday, February 9

Shabbat Mishpatim
Shabbat Service at 8:00 p.m.

Saturday, February 10

Torah Study at 9:00 a.m.
Shabbat Morning Service

Torah Portion - Mishpatim, Exod. 21:1 - 24:18

Haftarah - II Kings 12:5-16; Sh'kalim

2nd of Adar 5778
Friday, February 16

Shabbat T'rumah
Music Service at 8:00 p.m.

Saturday, February 17

Torah Study at 9:00 a.m.
Shabbat Learner's Service on
How Our Prayers Have Changed at 10:30 a.m.

Torah Portion - T'rumah, Exod. 25:1 - 27:19

Haftarah - I Kings 5:26 - 6:13

9th of Adar 5778
Friday, February 23

Shabbat T'tzvaeh
Shabbat Service at 8:00 p.m.
Shir Chadash Sings
Purimspiel during Oneg Shabbat

Saturday, February 24

Torah Study at 9:00 a.m.
Shabbat Morning Service at 10:30 a.m.

Torah Portion - T'zaveh, Exod. 27:20 - 30:10

Haftarah - Esther 7:1 - 10, 8:15 - 17 or I Sam 15:2-34 Zachor

14th of Adar 5778
Wednesday, February 28

Purim Service and Megillah Reading at 7:00 p.m.



Join us in celebration of Purim
February 23 Purimspiel
February 25 Purim Carnival
February 28 Megillah Reading



February 2018

Sunday	Monday	Tuesday	Wednesday	Thursday	Friday	Saturday
				1 16th of Shevat 5778	2 17th of Shevat 5778 4:57pm Candle Lighting 6:00pm - 7:00pm RS Dinner for Grades K-4 7:30pm - 8:30pm Family Shabbat Service - Fourth Grade Kabbalat Siddur Ceremony	3 18th of Shevat 5778 9:00am - 10:15am Torah Study 10:30am - 12:00pm B'nai Mitzvah Learner's Service 12:00pm - 1:00pm ETC Mitzvah Lunch 6:30pm - 10:30pm Sweet Tastes of Torah at Fair Lawn Jewish Center
4 19th of Shevat 5778 9:00am - 11:00am Religious School Classes 9:45am - 11:00am Social Action Committee Meeting 12:00pm - 1:00pm Purim-spiel Rehearsal 2:00pm - 3:00pm Junior Choir Festival at Congregation Beth Shalom	5 20th of Shevat 5778 10:30am - 12:00pm Yiddish Class 7:45pm - 9:15pm Finance Committee Meeting	6 21st of Shevat 5778 8:00pm - 10:00pm AIPAC Teaneck Event at Congregation Keter Torah	7 22nd of Shevat 5778 12:00pm - 1:00pm Lunch and Learn 3:30pm - 8:00pm Community Blood Drive 4:00pm - 6:00pm Religious School Grades 3-7 6:00pm - 7:00pm JYG Pizza and Game Night 7:45pm - 9:15pm Kol Emet Rehearsal	8 23rd of Shevat 5778 7:45pm - 9:00pm Board of Trustees' Meeting	9 24th of Shevat 5778 5:05pm Candle Lighting 8:00pm - 9:00pm Shabbat Service	10 25th of Shevat 5778 9:00am - 10:15am Torah Study 10:30am - 12:00pm Shabbat Morning Service
11 26th of Shevat 5778 9:00am - 11:00am Religious School Classes 11:00am - 3:00pm ETC on the Road: Columbia University Hillel 12:00pm - 1:00pm Purim-spiel Rehearsal	12 27th of Shevat 5778 10:30am - 12:00pm Yiddish Class	13 28th of Shevat 5778 7:30pm - 9:30pm Adult Ed - Screening of "Hester Street"	14 29th of Shevat 5778 12:00pm - 1:00pm Lunch and Learn 4:00pm - 6:00pm Religious School Grades 3-7 6:00pm - 7:00pm Etz Chayim Pizza and Rehearsal 7:45pm - 9:15pm Kol Emet Rehearsal	15 30th of Shevat 5778 7:30pm - 9:00pm Book Group: "The Kidnapping of Edgardo Mortara" 7:30pm - 9:00pm Ritual Committee Meeting	16 1st of Adar 5778 5:14pm Candle Lighting 8:00pm - 9:00pm Music Service with Full Band	17 2nd of Adar 5778 9:00am - 10:15am Torah Study 10:30am - 12:00pm Shabbat Learner's Service on How Our Prayers Have Changed
18 3rd of Adar 5778 No Religious School 12:00pm - 1:00pm Purim-spiel Rehearsal	19 4th of Adar 5778 Building Closed Presidents' Day	20 5th of Adar 5778 7:45pm - 8:45pm Adult Education Committee Meeting	21 6th of Adar 5778 12:00pm - 1:00pm Lunch and Learn 4:00pm - 6:00pm Religious School Grades 3-7 6:00pm - 7:00pm Etz Chayim Pizza and Rehearsal 7:45pm - 9:15pm Kol Emet Rehearsal	22 7th of Adar 5778 10:00am - 7:00pm Shalach Manot Packing	23 8th of Adar 5778 5:22pm Candle Lighting 8:00pm - 9:00pm Shabbat Service - Shir Chadash Sings 9:00pm - 10:00pm Purim-spiel and Oneg	24 9th of Adar 5778 9:00am - 10:15am Torah Study 10:30am - 12:00pm Shabbat Morning Service
25 10th of Adar 5778 9:00am - 10:00am "The Secret Megillah" with Rabbi Steven Sirbu 9:00am - 11:00am Religious School Classes 9:00am - 12:00pm Shalach Manot Distribution 10:00am - 11:30am Purim Carnival	26 11th of Adar 5778 10:30am - 12:00pm Yiddish Class	27 12th of Adar 5778 7:30pm - 8:30pm Adult Ed Mini-University: Why Do We Do That? taught by Cantor Ellen Tilem 7:45pm - 9:15pm Finance Committee Meeting 8:40pm - 9:40pm Adult Ed Mini-University: The Talmud on Leadership Arthur Lerman	28 13th of Adar, Erev Purim No Religious School 12:00pm - 1:00pm Lunch and Learn 7:00pm - 8:00pm Purim Service and Megilah Reading			

For up-to-the-minute event information, additions, cancellations, or make-up classes go to www.emeth.org
A version of the calendar is online at <http://www.emeth.org/monthly-calendar>

Good & Welfare

The congregation mourns the loss of...
longtime member **Kenneth Heller** and
sends condolences to his family.
member **Harriet Breuer** and sends
condolences to her family.
member **Beatrice Korn** and sends
condolences to her family.

Condolences to...

Joel Friedman on the loss of his father,
Seth L. Friedman.

Cindy Simon on the loss of her uncle,
Donald McNamara.

Mazel Tov to...

Marcia Shapiro and Michael Robinson on the birth
of their grandson Louie Robinson Borowsky,
and to his parents, Lara Shapiro Borowsky
and Eric Allen Borowsky.

Stephanie and Mark Stokes on the engagement of
their daughter Amy Stokes to Sam Chernoff.

Get Well Wishes to...

Jeremy Kravitz
Jeff Lehmann

ATTENTION, ATTENTION, ATTENTION!!!!



The Temple Emeth Purimspiel will be on Friday night, February 23. We are looking for a **FEW** good Men and Women (hey, we'll even take some so-so men and women, actually) who **ENJOY** making their friends **LAUGH** and **GROAN** (with enjoyment, of course).

We have: **Speaking Parts!**

Choral Singing Parts!

Solo Singing Parts! and

Just standing there making us look like more people are participating parts, even.

Want to join us? Want to just check it out with no obligation?

We'll be in the Museum on **Sundays in February** at 12:00 p.m. for about an hour. (That will give you plenty of time to do other things later.)

Or else, contact Marilyn Shapiro at

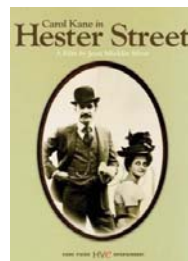
puzzledmar@aol.com or

Shelley Burnston at brbart1213@aol.com

Don't miss out on this once-a-year opportunity!

"MOVIES THAT MATTERED" A Film Series Follow-Up to "The Jewish Experience Through Cinema"

The Adult Ed Committee has been overwhelmed by the great success of our film series program! The series is based on the film list distributed by Dr. Eric Goldman, the presenter at the Rabbi Louis J. Sigel Scholar-in-Residence Program this past spring. Due to the overwhelming response by the congregation, we are continuing the program throughout the coming year. Refreshments will be served and don't forget...bring a cush for your tush!



Hester Street. Joan Micklin Silver's 1975 black-and-white drama is set on the Lower East Side of Manhattan in 1896. Jake (Steven Keats), formerly Yankel, a Jewish immigrant determined to assimilate, is embarrassed when his wife joins him from the old country. Devoted to tradition, Gitl (Carol Kane, who received an Oscar nomination for her substantially Yiddish-language performance) insists on covering her hair and puts salt in their son's pockets to ward off the evil eye.



Here is the schedule of upcoming films:

HESTER STREET (1975)
Tuesday, February 13 at 7:30 p.m.

THE FRISCO KID (1979)
Note Date change Tuesday, **March 6** at 7:30 p.m. Date change

A SERIOUS MAN (2010)
Tuesday, April 10 at 7:30 p.m.

BARNEY'S VERSION (2011)
Thursday, May 31 at 7:30 p.m.

**TEMPLE EMETH'S
FIDDLER ON THE ROOF**
Tuesday, June 19 at 7:00 p.m.

Please join in the fun and excitement
of these stimulating evenings.

CONTRIBUTIONS

ADULT EDUCATION FUND

Anonymous for screening of "Lies My Father Told Me"

Teri Binder in honor of the marriage of Lynn and Steve Chaiken's son Max to Rabbi Danny Shapiro in honor of the engagement of Carla and Larry Silver's daughter, Deborah, to Andrew Beck in memory of Melvin Breier, father of Ilene Anesini in memory of Shirley and Kenneth Heller in memory of Syd Shana, mother of Barbara Balkin in memory of her mother-in-law, Beatrice Binder wishing Jeff Lehmann a speedy recovery
Carlene Fleishman in honor of Emily Steinberg's handiwork

COLLEGE KIDS FUND

Lynne and Bill Graizel in grateful appreciation to Barbara and Michael Bias for their kindness in grateful appreciation to Judy and Gidon Yablonka for their kindness

ILANA HED RELIGIOUS SCHOOL FUND

Yossi and Dora Friedman in honor of the wedding of Max Chaiken to Rabbi Danny Shapiro

LIBRARY FUND

Sydell Yegelwel in memory of May Fesman

MUSEUM FUND

Eva and Larry Tobias in memory of Syd Shana, mother of Barbara Balkin

Judith and David Fox in memory of Syd Shana, beloved mother of Barbara Balkin

MUSIC FUND

Jill and Barry Kantor in honor of our friends, family, and the Emeth community

Marian and Rubin Ferziger in honor of Cantor Tilem
Sydell Yegelwel in memory of Kenneth Heller

RABBI'S DISCRETIONARY FUND

Susanne Perl in memory of her beloved father, Max Spritzer

Ilene and Vic Anesini in gratitude to Rabbi Sirbu for his support and guidance

Marian and Rubin Ferziger in honor of Rabbi Sirbu
Rose Becker

RABBI LOUIS J. SIGEL SCHOLAR-IN-RESIDENCE FUND

Judith and David Fox in honor of Shara VanPraagh's Bat Mitzvah

Shirley Rosenzweig in appreciation of all of our new members, with condolences for my friends who have suffered a loss, get well wishes to those in need, and congratulations to all celebrating happy occasions

RITUAL COMMITTEE FUND

Wendy Kosakoff and David Kohane in memory of David's father, Theodore Kohane

SOCIAL ACTION FUND

Sandra and Herb Loft in loving memory of Sandy's mother, Sophie Lipschitz

Bea Podorefsky in memory of her husband, Arthur Podorefsky

Joan Rubenstein in memory of her father, William Abrams, and her son, Mark Windell

Nancy Mednick in memory of her mother, Louise Norman

Joan Paul in memory of Kenneth and Shirley Heller

Eva and Larry Tobias in honor of the marriage of Lynn and Steve Chaiken's son Max to Rabbi Danny Shapiro

Bernice and Nathan Ritzer in memory of Kenneth Heller

Joan Paul in memory of Jacques Kaufman, cousin of Paul Kaufman

Lucy Brody

Elizabeth and Paul Rubock

STRAUSSMAN MEMORIAL YOUTH AWARD FUND

Ilene and Vic Anesini wishing a Mazel Tov to Lynn and Steve Chaiken on the marriage of Max Chaiken to Rabbi Danny Shapiro

Deborah & Michael Newman in gratitude to Rabbi Sirbu's prayers for their daughter's recovery

TEMPLE EMETH FUND

Benjamin Ward and Dione Danis in honor of Temple Emeth

Carla and Larry Silver in memory of Kenneth Heller

TEMPLE EMETH BEAUTIFICATION FUND

Sue and Phil Keusch in memory of Melvin Breier, father of Ilene Anesini

in memory of Shirley Heller and Kenneth Heller

in memory of Charles Gene Hirsh, uncle of

Marc Chelemer

in memory of Syd Shana, mother of Barbara Balkin

wishing a Mazel Tov to Lynn and Steve Chaiken

on the marriage of Max Chaiken to

Danny Shapiro

Judy and Walter Distler in memory of Syd Shana, mother of Barbara Balkin

VIEWPOINTS

Karen Rappaport and Phylis Burman in memory of

Melvin Breier, father of Ilene Anesini

in memory of Syd Shana, mother of Barbara Balkin

wishing a Mazel Tov to Lynn and Steve Chaiken

on the marriage of Max Chaiken to

Danny Shapiro

YAHREZEIT FUND

Harold Krigsmann in memory of his wife, Lenore Krigsmann

Carol Heischob in memory of her beloved husband, Bob Heischob

Carol Heischob in memory of her beloved mother, Ann Kirshenbaum

Bea Podorefsky in memory of Sarah V. Gross, Frank I. Gross, Benjamin Podorefsky, and Clara Podorefsky

Deborah and Jim Veach in memory of Jim's mother, Nysabea Taylor Veach

Rabbi Joshua Trachtenberg Memorial Library

Monthly News Update: Jewish Justices

By Marion Wolf

ASSOCIATION OF JEWISH LIBRARIES ACCREDITATION



How much do you know about the eight Jewish men and women who have served on the U.S. Supreme Court? There is a marvelous new book in the Rabbi Joshua Trachtenberg Memorial Library that examines the lives, legal careers, and legacies of these individuals. Jewish Justices of the Supreme Court by David G. Dalin is a collective biography filled with memorable details and gripping narrative. Here is a quiz based on the book. See if you can match the justices and their descriptions.

- | | |
|---------------------|------------------------|
| A. Louis Brandeis | B. Stephen Breyer |
| C. Benjamin Cardozo | D. Felix Frankfurter |
| E. Abe Fortas | F. Ruth Bader Ginsberg |
| G. Arthur Goldberg | H. Elena Kagan |

___ 1. He was altogether assimilated—put up a Christmas tree and ate ham—yet gained fame as the first Jewish justice on the Supreme Court. He was an early leader of the Zionist movement in the U.S. He defined the right to privacy.

___ 2. He was descended from Sephardic founders of the Spanish-Portuguese Synagogue. He became a lawyer to redeem the family name after his father, a judge, was involved in a big scandal. He wrote a book still considered the most influential work by a judge on the art and process of judging.

___ 3. He was a child of the Viennese Jewish ghetto and came to the U.S. at age 12 with his family. As a young man he lived in a bachelor residence nicknamed “The House of Truth.” All the roommates there were destined for brilliant careers. He married the daughter of a Protestant minister. He was the first Jew appointed to the Harvard Law School faculty, and he served on the Supreme Court 23 years, influencing a whole generation of lawyers and judges.

___ 4. The youngest of 12 children, he grew up in poverty. In high school he attended the trial of Leopold and Loeb. There he was impressed by Clarence Darrow and decided to become a lawyer.

He was a pioneer in labor law and was labor secretary in JFK’s cabinet. Kennedy called him “the smartest man I ever met.” He resigned from the Court to serve as U.N. ambassador (“Have you ever had your arm twisted by LBJ?”)

___ 5. The son of Orthodox immigrants from England, he was a teenage violin prodigy. His income from concertizing helped him pay for law school. He was a close friend of Lyndon Johnson. He only reluctantly accepted his nomination for the Supreme Court (because it meant a pay cut for him). Although brilliant and well-respected, he resigned in disgrace for violations of judicial ethics and propriety.

___ 6. Known as the preeminent litigator for women’s legal equality, this justice was the first woman to achieve tenure at Columbia Law School. Her parents were immigrants, and she lost her mother to cervical cancer the day before her high school graduation. At Harvard Law School she was one of nine women in a class of 500. She enjoyed a three-decade friendship with Antonin Scalia, a fellow opera-lover.

___ 7. He grew up in a Reform Jewish household, married a member of the British aristocracy, and had a daughter who became an Episcopal priest. He taught at Harvard and worked with Senator Ted Kennedy to deregulate the airline industry. Respected for his cordial relations with all colleagues, he cast deciding swing votes in cases related to the display of the Ten Commandments.

___ 8. She is the only Supreme Court justice to have celebrated a bat mitzvah (it was the first one ever at the Orthodox Lincoln Square Synagogue on the Upper West Side). She was the first female dean of Harvard’s Law School. Thurgood Marshall nicknamed her “Shorty.” She is the second-youngest member of the current Court.

Answers: 1A, 2C, 3D, 4G, 5E, 6F, 7B, 8H

CONTRIBUTIONS (continued)

Yahrzeit Fund

Shirley Rosenzweig in memory of her beloved husband,
Gilbert Rosenzweig

Barbara and Michael Bias in memory of Michael’s

mother, Rhoda Bias

Joan Paul in memory of her mother, Dorothy Marks

Sylvia Pollack in memory of her mother, Esther Mitnick

CONTRIBUTION FORM

\$ _____ Enclosed (\$10 minimum) Fund Name _____

Contributed by _____

Send Acknowledgment to: _____

Address _____

Message _____

Use this form to send an acknowledgment for life cycle events to your friends and family and at the same time perform the mitzvah of tzedaka. Call the office with any questions.

Contributory Funds – contributions are deposited in the Temple Emeth Funds Account and drawn for use by the designated committee

- | | | |
|--|---------------------------------------|--|
| • Adult Education Fund | • Adult Kallah Fund | • Albert & Mildred Otten Institute for Living Arts |
| • Beautification Fund | • Paul S. Lazar Caring Community Fund | • Children's Worship Fund |
| • College Kids Fund | • Emeth Teen Community Fund | • Environment Fund |
| • Abe Golomb Religious School Scholarship Fund | • Ilana Hed Religious School Fund | • Inscribed Prayerbook Fund (\$50 minimum) |
| • Library Fund | • Museum Fund | • Music Fund |
| • Prayerbook Fund | • Ritual Fund | • Margery Rothschild Memorial Israel Fund |
| • Rabbi Louis J. Sigel Scholar-in-Residence Fund | • Social Action Fund | • Straussman Memorial Youth Award Fund |
| • Temple Emeth Fund | • Torah Repair Fund | • Joshua Trachtenberg Memorial Lecture Fund |
| • Viewpoints Fund | • Yahrzeit Fund | • Youth Committee Program Fund |

Endowed Funds – contributions are added to principal held by the Temple Emeth Endowment Foundation with fund income distributed yearly

- | | | |
|---|---|--|
| • Adult Kallah Scholarship Fund | • Grunstein-Liberman Endowed Fund | • Honigberg/Howard Religious School Scholarship Fund |
| • Lazar Educational Enrichment Fund | • Paul S. Lazar Caring Community Endowed Fund | • Alfred and Helen Levin Youth Award Fund |
| • Rabbi Louis J. Sigel Endowment Fund | • Ned and Doris Siner Music Fund | • Temple Emeth Endowment Fund |
| • Dru and Ted Greenwood Youth Awards Fund | | |

Other Funds – contributions are used at the discretion of the recipient • Rabbi's Discretionary Fund • Cantor's Discretionary Fund

Visit the Temple website at www.emeth.org

MAKE YOUR NEXT OCCASION SPECIAL AT TEMPLE EMETH!

Planning a Wedding, Bar/Bat Mitzvah, Brit Milah, Birthday Party, or Business Meeting?

Look no further...Temple Emeth can comfortably accommodate 25 to 225 guests. Your guests will enjoy the expansiveness of our elegant entry hall, social hall, and beautiful outdoor "Garden in the Round." Our youth lounge is also available for rental. We accommodate Kosher, Glatt Kosher and non-Kosher catering.



Temple Emeth
1666 Windsor Road
Teaneck, NJ 07666
www.emeth.org

Please contact:
Rochelle Rudnick
Temple Emeth Administrator
at
201-833-1322 or
rrudnick@emeth.org

Our calendar is quite busy; please be certain to
book your event soon!



**Planning an event, meeting or activity at the Temple? An
on-line version of the "green form" for room reservations is
now available at: <http://www.emeth.org/events/green.php>**

Tree of Life

Located in the Temple lobby, the Tree of Life provides an opportunity to share life's special occasions with your Temple family. Loved ones, friends and members of the congregation are able to create permanent remembrances of their joyous events so that future generations can look upon our yesterday as having been filled with hopes, dreams and accomplishments. Order yours now! You will enjoy visiting the Temple and finding your leaf. To order, please call Rochelle in the Temple office at (201) 833-1322.

Memorial Plaques

This is a wonderful way to honor your departed loved ones by purchasing a permanent plaque in our Sanctuary. It will evoke fond memories to see their names on our Memorial wall. When you purchase these plaques, one is permanently placed on the Memorial wall and the second larger one is displayed on the actual week of the yahrzeit. The cost is \$375 FOR BOTH PLAQUES. You may also buy and reserve plaques in advance. See Rochelle Rudnick in the office if you would like to make a purchase.

Summary of Minutes from the December 21, 2017 Board of Trustees Meeting

Bazaar - Amy Abrams - Net revenue of \$13,040 plus \$1289 from the summer garage sale. Above the budget expectations of \$14,000.

Treasurer's Report – Jim Sandler - Budget is in good standing. 9 HVAC units and lighting project costs will be assumed by the Kahn grant monies. The money for the additional 8 units has already been approved. The House Committee has requested \$4,000 for exterior improvements. Awaiting detailed information for these improvements and will review at that time. Suggestion to encourage congregants to prepay 2018 dues ahead of January 1 due to implications of new tax plan. Under the voluntary commit-

ment model, we have 39 new members.

Motion - Allow the President and Treasurer to approve expenditures of \$5,000 or less without coming to the Board of Trustees. Motion passed – 13 yes, 3 abstentions.

General Discussion - Dan Kirsch reported that the postcard signing was very successful. Approximately 600 postcards were sent to local politicians.

Respectfully submitted,
Lisa Eig
Secretary

REGISTER TODAY!

Co-sponsored by
Temple Emeth



THE AMERICAN ISRAEL PUBLIC AFFAIRS COMMITTEE

cordially invites you to an evening in celebration of

Mort Fridman, AIPAC's President-Elect

Featuring

Elliott Abrams

Senior Fellow for Middle Eastern Studies at the Council on
Foreign Relations and former Deputy National Security Advisor

Tuesday, February 6, 2018

8:00 PM

Congregation Keter Torah
600 Roemer Avenue, Teaneck

THIS EVENT IS FREE AND OPEN TO THE COMMUNITY

For security purposes, RSVP at www.aipac.org/teaneck

For more information, please contact

Josh Lavine at jlavine@aipac.org

TEMPLE EMETH CELEBRATES ITS 70th ANNIVERSARY



Speakers David Fox, Peter Adler, Nicole Mott, Marion Wolf, and Stacey Butler shared history, art, and memories of Temple Emeth.



CARNIVAL!

Sunday, February 25, 2018

10:00 am - 11:30 am

Prizes, Games, and Fun!

20 Game Tickets for \$10

50 Game Tickets for \$20

**All 7th-12th Graders are asked to help run
the carnival games for the younger students.**

Parents are encouraged to help as well.

**If you have questions, contact Rachel
Eastman (amandasmommy@optonline.net)**

Garden News



The Garden Committee invites young and old to join us on Sunday March 4th at 10:30 a.m. for our Spring planning meeting. On the agenda is building a planting box high enough for those who have difficulty bending to plant, weed and harvest. Our intergenerational garden was developed and is sustained by donations to the Garden Fund. The Committee would appreciate a small donation for purchase of seeds, organic soil and supplies.

For further information contact Julie Weisman at julie@flavorganics.com

Donating to your favorite Temple fund?

The Straussman Youth Fund needs donors so it can continue to grow and provide scholarships for our young Temple members. These scholarships offset the cost of URJ summer camp, NFTY Kallahs, NFTY National Convention and other URJ youth programming. PLEASE think Straussman Youth Fund when making your donations!



Award Winner in Results and Customer Service

A realtor for all seasons

Wendy Wineburgh Dessanti

Top Office Producer 2016-2017

Top Listing Agent 2014-2017

Top Zillow Rating for Customer Satisfaction

Broker/Sales Associate

c: 201-310-2255 (preferred)

o: 201 569-7888

e: wendydess@aol.com

TENAFLY



Serving Bergen County for over
25 Years with Integrity,
Professionalism and Results



201-928-0100

201-928-0406 (FAX)

e-mail: senweinstein@njleg.org

LORETTA WEINBERG

NEW JERSEY STATE SENATE

MAJORITY LEADER

545 CEDAR LANE
TEANECK, NJ 07666

SENATOR, 37TH DISTRICT
BERGEN COUNTY

*We continue to be Jewish family managed,
knowing that caring people provide caring service.*

GUTTERMAN AND MUSICANT JEWISH FUNERAL DIRECTORS

800-522-0588

WIEN & WIEN, INC. MEMORIAL CHAPELS

800-322-0533

402 PARK STREET, HACKENSACK, NJ 07601

ALAN L. MUSICANT, Mgr., N.J. Lic. No. 2890 • MARTIN D. KASDAN, N.J. Lic. No. 4482

Advance planning conferences conveniently arranged at our chapel or in your own home



GuttermanMusicantWien.com



amazon.com

Use the Amazon Link on our Webpage

Support Temple Emeth by using our special
Amazon link to make purchases on Amazon.com.
Just visit www.emeth.org and click on the
Amazon.com button
at the bottom of each page,
then purchase to your heart's content!

Since 1954

Bergen County Reform Temple Memorial Association

A non-profit organization
serving Temple Emeth

Burial plots at reasonable prices

Contact:

David Fox at (201) 836-0260

Eric Loeb at (201) 692-0211

*Please support our advertisers and tell them you saw their ad
in the Temple Emeth Bulletin*

ELLIOT BROKER/SALES ASSOCIATE
201-446-0839
elliottwsteinberg@gmail.com

REAL ESTATE PROS
ELLIOT AND EMILY
STEINBERG. FRIENDLY,
TRUSTWORTHY,
KNOWLEDGEABLE,
PERSONALIZED
SERVICE AT ITS FINEST.

INVITE US IN. WE'LL
BRING RESULTS!



EMILY REALTOR/SALES ASSOCIATE
201-446-1034
emily.emilysteinberg@gmail.com

OF ALL THE DECISIONS
YOU WILL FACE WHEN
BUYING OR SELLING,
THERE IS NONE
MORE IMPORTANT
THAN WHOM YOU
CHOOSE TO
REPRESENT YOU.

SERVING THE
BERGEN COUNTY,
TEANECK AREA.

**Weichert
Realtors**



Temple Emeth
1666 Windsor Road
Teaneck, New Jersey 07666
www.emeth.org

Non-Profit Organization
U.S. POSTAGE
PAID
Permit No. 718
South Hackensack, N.J.

ADDRESS SERVICE
REQUESTED

Emeth

The Bulletin of Temple Emeth of Teaneck, New Jersey
A Member of the Union for Reform Judaism:
Serving Reform Congregations in North America