

Temple Emeth

Bulletin

Temple Emeth of Teaneck, New Jersey
An Affiliate of the Union for Reform Judaism
Serving Reform Congregations in North America

Volume 74, Number 6

www.emeth.org

Adar/Nisan 5781

March 2021



HAPPY PASSOVER



Saturday, March 27th

Passover Seder hosted by Temple Sinai
in Tenaflly, led by Rabbi Jordan Millstein
6:00 p.m. Zoom

Sunday, March 28th

Collaborative Festival Morning Service
Temple Sinai 10:30 a.m. Live Stream

Second Night Passover Seder led by Rabbi
Steven Sirbu 6:00 p.m. Zoom

See page 6 for information about ordering Passover food.

◆ ◆ ◆

◆ ◆ ◆

Main Office # 201 833-1322



RABBI	Steven Sirbu	ssirbu@emeth.org
CANTOR	Ellen S. Tilem	cantoret@yahoo.com
RABBI EMERITUS	Louis J. Sigel z”l	
RELIGIOUS SCHOOL EDUCATOR	Dora Geld Friedman	dfriedman@emeth.org
◆◆◆◆◆◆◆◆◆◆		
TEMPLE ADMINISTRATOR	Suzannah Mercado	smercado@emeth.org
BOOKKEEPER	Maryanne Tursi	mtursi @emeth.org
ADMINISTRATIVE ASSISTANT	Alison Reiser	areiser@emeth.org
SCHOOL ADMINISTRATOR	Barbara Shater	bshater@emeth.org
◆◆◆◆◆◆◆◆◆◆		
PRESIDENT	Nicole Falk	president@emeth.org
FIRST VICE-PRESIDENT	Michael Robinson	firstvp@emeth.org
SECOND VICE-PRESIDENT	Michael Goldberg	secondvp@emeth.org
THIRD VICE-PRESIDENT	Flip Bernard	thirdvp@emeth.org
SECRETARY	Robert Kahn	secretary@emeth.org
ASSISTANT SECRETARY	Marty Breznick	asstsecretary@emeth.org
FINANCIAL SECRETARY	Alan Winters	financialsecretary@emeth.org
ASSISTANT FINANCIAL OFFICER	Ken Scher	asstfinancialofficer@emeth.org
TREASURER	Gary Richards	treasurer@emeth.org

Barbara Balkin bulletin@emeth.org

ASSISTANT EDITORS: Marion Wolf and Judy Fox

<i>Bulletin Deadlines</i>			<i>Mid-Month Mailing Deadlines</i>	
<i><u>Month</u></i>	<i><u>Deadline Date</u></i>	<i><u>Publication Date</u></i>	<i><u>Deadline Date</u></i>	<i><u>Publication Date</u></i>
September	August 15	September 2	September 10	September 16
October	September 15	October 1	October 12	October 17
November	October 15	November 1	November 9	November 14
December	November 15	December 1	December 12	December 18
January	December 15	January 2	January 10	January 16
February	January 15	February 1	February 11	February 19
March	February 15	March 1	March 8	March 13
April	March 15	April 1	April 9	April 16
May	April 15	May 1	May 8	May 15
June	May 15	June 1	June 10	June 17

Suzannah Mercado at admin@emeth.org cc: ehanan@emeth.org

For Mid-month emails, all materials are due by **4:00 p.m.** on the date of the deadline.

1 Month	\$ 55	\$ 75
5 Months	\$250	\$350
10 Months	\$330	\$450

For additional information, call (201) 833-1322

Message From the Rabbi

In March of 2020, as the full threat of the Coronavirus came into view, experts offered their doomsday estimate that the disease could kill up to 240,000 Americans. Now, a year later, the death toll has reached more than double that, a heartbreaking 500,000 Americans, and 2.4 million worldwide.

Those are staggering numbers, and they give us reason to pause. But one lesson that we learned from the Holocaust and again on 9/11 is that, though we may be able to count the victims, it is impossible to quantify grief.

Perhaps that is why I feel so many conflicting emotions as we approach the year anniversary of the shutdown. I am sad over the many people who lost their lives. I am angry over the failures of leadership that made the crisis worse. I am impatient because it is taking so long to distribute the vaccine and make it safe to resume our normal lives.

I feel fear that someone else I know could get sick and die of Covid-19, and I feel hope that the end of this crisis is within view. Perhaps you feel this too. This dialectic reflects the complexity of these times and of human emotions writ large.

On Passover, which begins later this month, we will

gather, many of us virtually to celebrate the Seder. Writer Daphne Merkin has an essay in the Tablet Magazine Haggadah entitled “The Seder as Therapy,” in which she writes: “In contemporary terms, the Haggadah can be seen as both a trauma narrative, filled with the psychic repetition that trauma produces, and a story of redemption, shot through with joy and song.” To me this seems the perfect ritual to deal with this dialectical time. It integrates hurt and hope. It commands us to remember while pointing us toward a better future.

As I prepared to lead the Temple’s first ever Zoom Seder last year, everyone assumed it would be the last. But life has a way of fooling us. The strength of our tradition is that it gives us the spiritual strength to deal with whatever comes next, even if we haven’t anticipated it.

A favorite song at the Seder is Dayenu. It is a song of gratitude, but it is more than that. Author Howard Jacobson writes (in the same Haggadah referenced above) that Dayenu “is a please masquerading as a thank you. We give thanks in order to ask for more.” How true. I suppose that is both my Seder dialectic and my pandemic dialectic. After a year, I am grateful for so much, but I long for so much more.



Rabbi Steven Sirbu



From the Religious School

“In every generation, each of us must see ourselves as if we personally left Egypt.”
from the Haggadah

All of us have the perfect opportunity to experience the excitement of seeing family and friends, of song and celebration (on Zoom, of course) when we participate in a Passover Seder. The Seder is a time to retell the story of the Exodus and allows us to re-experience the journey - both national and personal - from slavery to freedom.

The opening line in the Passover Haggadah, “Kol Dichfin” – “Let all who are hungry come and partake” invites all of us, children and adults alike, to partake of the rich banquet that is our Passover Seder. Our tradition teaches us that the foods, rituals, and stories of the Seder can feed our bodies as well as our souls. This year the first Seder falls on Saturday evening, March 27th, which is the 14th day of Nissan.

Our Religious School staff and committee have pre-

pared a special gift for our families - “It’s In The Bag - Celebrate Pesach.” This cornucopia of items to enrich our Religious School families’ Passover experience includes hands-on activities, crafts, stories, and Passover recipes prepared by our teachers, as well as a ceramic Seder plate to paint.



Dora Friedman

Here are some additional ideas to energize your Passover celebration:

Choose a scene in the Passover story and act it out with simple costumes and props.

Create a family poem about spring- a poem that will celebrate Passover, also known as

“Chag Ha-aviv” – the “Spring Holiday.”

From our Religious School family to yours, A
Zissen Pesach!

B’vracha,
Dora Geld Friedman



Shalach Manot Joy

The Merriam-Webster Dictionary defines an optimist as a person who is inclined to be hopeful and to expect good outcomes. While we are generally optimists, we didn’t expect this year’s Shalach Manot program to feel quite the same as it has in previous years.



Well, we were wrong! Thanks to your support, hundreds of Temple Emeth members and every staff member received Shalach Manot. Those who live outside our delivery area received virtual greetings. We are grateful for your support and for the drivers who delivered Shalach Manot to our friends in the Temple Community. They were greeted with appreciative smiles and comments about this wonderful part of Temple Emeth. Thank you to **Marilyn Shapiro, Danielle Feuer, Rick Chittum, Pixie & Ed Pierce, Shana & Greg Janoff, Cynthia & Barry Massarsky, Michael & Gayle Goldberg, Susan & Peter Adler, Larry Silver, Sam Gronner, Diane Fremon, Nickie & Doug Falk, Stacey Butler & Brandon Balfe, Meredith Alvaro, Mindy Greenberg, Sandi Klein, Ellen Monane, Jocelyn Inglis, Nancy & Ken Scher, Judy Eichinger, Linda Poskanzer & Paul Rosenberg, Barry & Jill Kantor, Jodee & Regina Fink, Arlene Packles, Jaime Rubin & Howard Lieberman, Julie Weisman, Amy Abrams & Arnie Graber, Pauline & Tammy Hecht, Cindy Simon, Linda Klempner, and Lynn & Steve Chaiken.**

We also had amazing help from our teens. We are so impressed with the energy and enthusiasm of Cameron Alvaro, Allegra Alvaro, Aaron Richards, Jordana Hart, Emre Ozmamili, and Talia Sirbu, who made the distribution of gift bags so smooth. We hope we can count on your help next year!

A special thank you goes to Rabbi Sirbu, Meredith Alvaro, and Stacey Butler for their help in organizing the teen volunteers. Kudos to the Alvaro-Gebhart and Hart families for creating the entertaining commercial!

Chag Purim Sameach!

Shel & Jeff Grossman, Shalach Manot Co-Chairs

Message from President Nickie Falk

Finding Silver Linings in a Pandemic

At our last in-person Board meeting, on March 12, 2020, the Trustees voted to shut down our building beginning the next day at 3:00 p.m. No one could have predicted at that time that a year later, we would still be in the midst of a pandemic and our building would still be closed. Please note I said our building was shut, not Temple Emeth.

Temple Emeth has been going strong ever since!

During the last year, each one of us has experienced the loss of loved ones—husbands, wives, sisters, brothers, children, grandparents, friends—enough loss to fill the pages of this Bulletin. We've missed out on simchas and on the ordinary enjoyments of life. We've experienced loneliness and isolation. Some of us have experienced moments of extreme sadness and even despair. And while I don't want to minimize any of this, I would rather focus on what we've gained. I'd rather look at the silver linings.

How lucky are we that we live in an age of technology, so while separated, we were able to remain in touch. Immediately upon our shutdown, our Board went into action by reaching out to all members of the congregation with a phone call (old technology, but technology nonetheless). We were able to find out who was ill, who needed a little extra help with shopping, who needed just a friendly hello.

Within one week of our shutdown, we set up our Zoom platform. This required Rabbi Sirbu to not only become a technology guru overnight, but to bring us spiritual connection in a new way—through a small screen on our computers—a challenge he quickly overcame. It allowed us to see one another, pray with one another, celebrate holidays and simchas together, and even mourn together. It allowed our mini-university to continue, our committees and Board to meet, our Religious School to continue teaching, our staff to remain in touch.

As the High Holy Days approached, we added another level of technology—our streaming equipment. Since then, we've had the opportunity to bring you services and programs either by Zoom or livestream (on our Temple Emeth website, our Facebook page, and on our YouTube channel). I am grateful that this technology has allowed members who were hunkering down with family out of state, or members who have moved out of state, to remain connected with us.

I am grateful for the creativity of our clergy. Recognizing the limitations of watching services on a screen, Rabbi Sirbu has approached each service as an opportunity to create a connection both with the prayers and beyond the prayers. Whether that is the showing of a film, a guest sermon on comic books and masks, or putting together a collaborative healing service in the wake of January 6, each service has a fresh-

ness that keeps me coming back week after week. I have to also confess that the pandemic has allowed me, and perhaps many of you, to notice and appreciate the separation of the work week from the Sabbath in ways I never have before. Cantor Tilem has sought new ways to bring us music, whether enhanced by the duets she sings with Amanda Eastman, the guitar or flute playing of Wendy Kosakoff and David Kohane or Carol Shansky, or the videos she has produced of our children singing together.



Nickie Falk

I am grateful for our parking lot events that have enabled us to get glimpses of each other, albeit from a distance and masked. Our choir rehearsals in the parking lot, our High Holy Day prayerbook distribution, an ice cream truck delivering treats when those prayerbooks were returned, a Chanukah celebration with music and donuts all contribute to our sense of community. Last year and this, we've had an opportunity to have someone else cook our Seder meals for us. It doesn't get much better, unless that includes someone to wash the dishes as well!

I am grateful for the adaptability of our office staff, headed up by Administrator Suzannah Mercado. Initially, they carried on all the administrative functions remotely from their homes, and now they work masked and separated by plastic barriers in our office. They continue to hold us together during this time.

I am grateful for our many volunteers from my Dream Team to our Stream Team to our Board and to all committee members. Every committee continues to function, providing education, social action projects, diversity awareness, comfort, culture, and more. Our building is closed, but we are not!

Perhaps what I am most grateful is that the members of Temple Emeth have come together as a Kehillah Kedoshah—a sacred community.

Who is rich? Those who rejoice in their own portion—Pirke Avot 4:1

How rich is Temple Emeth!

Save the Date

We will hold an online Town Hall Meeting on Sunday, March 14 at 11 a.m. Learn about what's been going on at Temple, ask questions of your officers, and visit with your fellow congregants. Watch your weekly email for details.

Social Action in Action

Honoring Janice Preschel



We are pleased to invite you to our Kabbalat Shabbat Zoom service on Friday, March 12 at 5:45 p.m. where we will publicly change the name of the Social Action Fund to the Janice Preschel Social Action Fund. Janice's sister Brenda and sister-in-law Claire will be joining us. Spread the word to anyone else you know who knew and admired Janice.

We will, of course, be publicizing this event to the Temple community with the Zoom info, but if you know of any non-Temple people who will want to attend, you may forward this login info to them:

Join Zoom Kabbalat Shabbat:

<https://us02web.zoom.us/j/85192606432?pwd=TlRTZ3R6bmtSYlRGMHJITGtOdGJjdz09>

Focus on Food Security



Mazon, A Jewish Response to Hunger, estimates that nearly 40 million Americans struggled to put food on the table before COVID-19. This crisis is exacerbating their hardship, and it has swelled the number of food insecure Americans to a stunning 80 million. The 100% increase applies to Bergen County as well.

This year, the Social Action Committee decided that this is where we should put our time and attention. So we asked the Board of Trustees if they would join us in fighting hunger. They agreed, and gave us a donation. We started our campaign on Purim with a funds drive to benefit the Center for Food Action. We will continue our campaign in late spring to benefit the Family Promise Walk-in-Dinner Program. Then, as has been traditional at Temple Emeth, we will launch our High Holy Day food drive.

We've been asking for money donations instead of food because Covid has made it difficult to safely collect and pack food. In addition, CFA, with its buying power, can make our dollars go further to meet the needs of our hungry neighbors. We hope to eventually get back to donating both food and dollars.

From time to time, this year we'll get back to you with specific details about how you can help. In the meantime, even if we have no specific food drive happening, you can always donate to the Janice Preschel Social Action Fund. It seems very appropriate.

Ember by Smokey Joe Passover Seder Packages Order by Monday, March 15 with Discount

We are pleased to partner this year with Ember by Smokey Joe for Passover ordering and programming. Ember by Smokey Joe has provided our community with high-quality food and service for a number of years. We know that with Passover coming a year into the pandemic, many of you will welcome a break from cooking.



Menus are available for Seder (including an option for Friday night, as the first Seder is Saturday evening), Chol Hamoed, and the last days of Passover. If you place a Passover order at www.embernyc.com by March 15 and use the discount code **EMETHSAV5** at checkout, you will receive a 5% discount on your order; the Temple will receive 5% of the amount as well. **The discount is available only through March 15.** Discounted delivery is also available for members who choose to pick up their orders at the Temple. We will inform you of the exact time that Ember by Smokey Joe will deliver your orders to the building for distribution. Pricing details are on the website.

As a participant in Ember's Affiliate Program, you will also have free access to Smokey Joe's digital library of cooking videos and recipes for Passover. Sign up for Member Content at www.embernyc.com/video recipelibrary and use the discount code JOE COOKS to gain a year of access to these resources. If you have friends or family who you think would like to order, please share the discount code with them, which will further benefit the Temple.

Services and S'machot

22 Adar 5781
Friday, March 5th

Shabbat Parah
Family Shabbat Service at 7:30 p.m. Live Stream

Saturday, March 6th

Torah Study at 9:00 a.m. Zoom
Shabbat Morning at 11:00 a.m. Live Stream

Torah Portion - Ki Tisa: Exodus 30:11-34:35

Haftarah - Ezekiel 36:16-36:38

29 Adar 5781
Friday, March 12th

Shabbat HaChodesh
Kabbalat Shabbat Service at 5:45 p.m. Zoom
Dedication of the Janice Preschel Social Action Fund

Saturday, March 13th

Torah Study at 9:00 a.m. Zoom
Shabbat Morning Service at 11:00 a.m. Live Stream

*Torah Portion - Vayakhel-Pekudei:
Exodus 38:21-40:38*

Haftarah - Ezekiel 45:16-46:18

7 Nisan 5781
Friday, March 19th

Shabbat Vayikra
Shabbat Evening Service at 8:00 p.m. Live Stream

Saturday, March 20th

Torah Study at 9:00 a.m. Zoom
Shabbat Morning Service at 10:30 a.m. Live Stream
Bat Mitzvah of Maya Zaken

Torah Portion - Vayikra: Leviticus 1:1-5:26

Haftarah - Isaiah 43:21-44:23

14 Nisan 5781
Friday, March 26th

Shabbat HaGadol
Shabbat Evening Service at 8:00 p.m. Live Stream

Saturday, March 27th

Torah Study at 9:00 a.m. Zoom
Shabbat Morning Service at 11:00 a.m. Zoom

Torah Portion - Tzav: Leviticus 6:1-8:36

Haftarah - Malachi 3:4-3:24

**Passover Seder hosted by Temple Sinai in Tenaflly,
led by Rabbi Jordan Millstein 6:00 p.m. Zoom**

Sunday, March 28th

**Collaborative Festival Morning Service with Temple
Sinai 10:30 a.m. Live Stream**

**Second Night Passover Seder
led by Rabbi Steven Sirbu 6:00 p.m. Zoom**

March 2021

Sunday	Monday	Tuesday	Wednesday	Thursday	Friday	Saturday
	1 17th of Adar 5781 10:30am - 12:30pm Yiddish Class @ ZOOM	2 18th of Adar 5781 7:30pm - 8:30pm Adult Education Class: "Waiting For A Miracle," with Cantor Tilem @ ZOOM 7:30pm Nominating Committee Meeting @ ZOOM 8:40pm - 9:40pm Adult Education Class: "The Word of God - Between the Divine and Human Realms," with Rabbi David Bockman @ ZOOM	3 19th of Adar 5781 4:30pm - 6:00pm Religious School	4 20th of Adar 5781 7:30pm - 8:30pm Officer's Meeting @ ZOOM	5 21st of Adar 5781 7:30pm - 8:30pm Family Shabbat Service @ Live Stream	6 22nd of Adar 5781 9:00am Torah Study @ ZOOM 11:00am - 12:00pm Shabbat Morning Service @ Live Stream
7 23rd of Adar 5781 9:00am - 11:00am Religious School @ ZOOM 9:45am - 11:45am Social Action Committee Meeting @ ZOOM 1:00pm - 2:15pm Confirmation Class attends RAC Social Justice Academy @ ZOOM	8 24th of Adar 5781 10:30am - 12:30pm Yiddish Class @ ZOOM	9 25th of Adar 5781 7:30pm - 8:30pm Adult Education Class: "Waiting For A Miracle," with Cantor Tilem @ ZOOM 8:40pm - 9:40pm Adult Education Class: "The Word of God - Between the Divine and Human Realms," with Rabbi David Bockman @ ZOOM	10 26th of Adar 5781 4:30pm - 6:00pm Religious School 7:30pm Gala Committee Meeting @ ZOOM	11 27th of Adar 5781 7:30pm - 9:00pm Board of Trustees Meeting @ ZOOM	12 28th of Adar 5781 5:45pm - 6:45pm Kabbalat Shabbat - Dedication of the Janice Preschel Social Action Fund @ ZOOM	13 29th of Adar 5781 9:00am Torah Study @ ZOOM 11:00am - 12:00pm Shabbat Morning Service @ Live Stream 7:00pm - 9:00pm Wine Tasting Fundraiser @ ZOOM
14 1st of Nisan 5781 9:00am - 11:00am Religious School @ ZOOM 11:00am - 12:00pm Town Hall Meeting @ ZOOM	15 2nd of Nisan 5781 10:30am - 12:30pm Yiddish Class @ ZOOM	16 3rd of Nisan 5781 7:30pm - 8:30pm Adult Education Class: "Waiting For A Miracle," with Cantor Tilem (make-up date) @ ZOOM 8:40pm - 9:40pm Adult Education Class: "The Word of God - Between the Divine and Human Realms," with Rabbi David Bockman (make-up date) @ ZOOM	17 4th of Nisan 5781 4:30pm - 6:00pm Religious School 7:30pm - 8:30pm Viewpoints Committee Meeting @ ZOOM	18 5th of Nisan 5781 7:30pm - 9:00pm Book Group The Woman of Troublesome Creek @ ZOOM 7:30pm Technology Task Force Meeting @ ZOOM	19 6th of Nisan 5781 8:00pm - 9:00pm Shabbat Evening Service @ Live Stream	20 7th of Nisan 5781 9:00am Torah Study @ ZOOM 10:30am - 12:00pm Shabbat Morning Service - Bat Mitzvah of Maya Zaken @ Live Stream
21 8th of Nisan 5781 9:00am - 11:00am Religious School @ ZOOM 10:00am - 11:00am Caring Committee Meeting @ ZOOM 1:00pm - 2:00pm Confirmation Class @ ZOOM	22 9th of Nisan 5781 10:30am - 12:30pm Yiddish Class @ ZOOM	23 10th of Nisan 5781	24 11th of Nisan 5781 4:30pm - 6:00pm Religious School	25 12th of Nisan 5781	26 13th of Nisan 5781 8:00pm - 9:00pm Shabbat Evening Service @ Live Stream	27 14th of Nisan, Passover Begins 9:00am Torah Study @ ZOOM 11:00am - 12:00pm Shabbat Morning Service @ ZOOM 6:00pm - 7:00pm Passover Seder on Zoom hosted by Temple Sinai in Tenafly, led by Rabbi Jordan Millstein @ ZOOM
28 15th of Nisan, Passover No Religious School (Passover Break) @ ZOOM 10:30am - 12:30pm Collaborative Festival Morning Service with Temple Sinai of Bergen County 6:00pm - 9:00pm Second Night Passover Seder @ ZOOM	29 16th of Nisan, Passover 10:30am - 12:30pm Yiddish Class @ ZOOM	30 17th of Nisan, Passover	31 18th of Nisan, Passover No Religious School			

For up-to-the-minute event information, additions, cancellations, or make-up classes go to www.emeth.org
A version of the calendar is online at <http://www.emeth.org/monthly-calendar>

Good & Welfare

Condolences to...

Joy Firshein on the loss of her aunt, Sharon Silbert.

Paul Kaufman on the loss of his sister-in-law,
Elizabeth Watson.

Abby Schlectman on the loss of her daughter's
mother-in-law.

Micki Grunstein and **Jane Lund** on the loss of their
cousin, Rhoda Gruen.

Mazel Tov to...

Kendall Seidenari on the Bat Mitzvah of her
daughter, **Jada Pamos**.

Lynne and Bill Graizel on the domestic partnership
of their daughter, Manda Jill to long-time
boyfriend Dr. Tyler John Hughes.



Request from the Paul S. Lazar Caring Community Committee to congregants

The Paul S. Lazar Caring Community Committee asks your help in identifying congregants who need our assistance. Although we quickly hear about deaths, we don't always learn about illnesses or other situations in which we could offer phone calls, shopping, meals, etc.

Please contact caring@emeth.org if you know of someone who needs help. All communications are kept strictly confidential. The Caring Committee has congregants who have volunteered to help navigate **vaccine registration** for members as well as take them to their appointments.



B'yachad Breakfast via Zoom

SUNDAY,

APRIL 18, 2021 at 10:30 a.m.

Please join us for a virtual Zoom B'yachad Breakfast (BYOBagel) and discussion on April 18, 2021 at 10:30 a.m., via Zoom, as Rabbi Sirbu presents:



Lessons from the Pandemic

Now that we are more than a year into the coronavirus pandemic, we see how quarantine affects how we pray, study, celebrate, and mourn. Every Jewish organization has had to adapt, and every Jewish tradition has been reimagined. Rabbi Sirbu will offer his assessments on what will go back to "normal" once the pandemic is over, and what changes in our practices and attitudes are here to stay.

The Zoom link and password for this B'yachad Breakfast will be distributed the week before the B'yachad presentation.



CONTRIBUTIONS

ABE GOLOMB RELIGIOUS SCHOOL SCHOLARSHIP FUND

Wendy and Dan Dessanti in honor of the birth of
Samuel Dalton Keil, grandson of Robyn and
Ernie Villany and son of Emily and
Fletcher Keil

ADULT EDUCATION FUND

Teri Binder in memory of her husband, Fred Binder
in honor of Peter Adler's special milestone
birthday

Elinor Buchbinder in honor of Peter Adler's 90th
birthday

Carla and Larry Silver in honor of Peter Adler's
90th birthday

Bill and Brenda Weiss in honor of Peter Adler's
90th birthday

CANTOR'S DISCRETIONARY FUND

Jane and Chuck Lund with gratitude for the
Cantor's kindness after the death of Jane's
brother, Theodore Moskowitz

JANICE PRESCHER SOCIAL ACTION FUND

Michael and Gayle Goldberg wishing a Mazel Tov
to Jada Pamos on her Bat Mitzvah

MUSIC FUND

Linda Poskanzer wishing David Kohane a speedy
recovery

Bill and Brenda Weiss in memory of Andy and Abby
Schlectman's son-in-law, Tony Lucanto

RABBI'S DISCRETIONARY FUND

Peter Adler in gratitude to Rabbi Sirbu

Fran Einiger in memory of her father, Abe Dickstein

Jacqueline Guttman in gratitude to Rabbi Sirbu

Julie Mikelberg in gratitude to Rabbi Sirbu

Elaine and Joseph Pollack in memory of Bunny
Ritzer, beloved wife of Nathan Ritzer

Linda Poskanzer in memory of Bunny Ritzer,
beloved wife of Nathan Ritzer

Carla and Larry Silver in memory of Bunny Ritzer,
beloved wife of Nathan Ritzer

RABBI LOUIS J. SIGEL ENDOWMENT FUND

Judy and David Fox in memory of Bunny Ritzer,
beloved wife of Nat Ritzer

REPLACE THE ROOF

Teri Binder in memory of Bunny Ritzer, beloved
wife of Nat Ritzer
in memory of Fredrica "Bunny" Levinson,
sister of Jacqueline Guttman
in memory of Phil Keusch, beloved husband
of Sue Keusch

in memory of Marilyn Newman, mother of
Madelyn Wolf Eichen and cousin of Barbara
Balkin

Lyle and Muriel Breitkopf in memory of Phil
Keusch, beloved husband of Sue Keusch

Elinor Buchbinder in memory of Phil Keusch,
beloved husband of Sue Keusch

Michael J. Dillon with gratitude to Professor Irwin
Yellowitz for his terrific and insightful class
on immigration

Nickie and Doug Falk wish Mazel Tov to Lynne and
Bill Graizel on the union of their daughter
Amanda with Tyler Hughes

Michael and Gayle Goldberg in loving memory of
Michael's Uncle Bernie and Aunt Joyce

Sue Keusch thanks Rabbi Sirbu for making Phil's
Zoom funeral and shiva both possible and
meaningful

Robin Rolfe and Arnold Saltzman in memory of
Phil Keusch, beloved husband of Sue Keusch

Bill and Brenda Weiss in memory of Phil Keusch,
beloved husband of Sue Keusch

SCHOLAR-IN-RESIDENCE FUND

Mona and Michael Rubin

TEMPLE EMETH FUND

Barbara and Keith Kornfeld with gratitude to Janis
and Donald Hoey

Elyse Balzer in gratitude to Nickie Falk and the other
considerate members who have sent
welcoming notes

Wendy and Dan Dessanti in memory of Phil
Keusch, beloved husband of Sue Keusch
in memory of Marilyn Newman, mother of
Maddy Wolf Eichen and cousin of Barbara
Balkin
in memory of Fredrica "Bunny" Levinson,
beloved sister of Jacqueline Guttman

Judy Eichinger in memory of Bunny Ritzer, beloved
wife of Nat Ritzer
in honor of Peter Adler's 90th birthday

Paul Kaufman in honor of Peter Adler's 90th birthday
in memory of Bunny Ritzer, beloved wife of
Nat Ritzer

CONTRIBUTIONS *(continued)*

TEMPLE EMETH FUND

Bill and Brenda Weiss in honor of Jim and Deborah Veach's granddaughter Nia in memory of Fredrica "Bunny" Levinson, beloved sister of Jacqueline Guttman

Jacqueline Guttman in memory of Bunny Ritzer, beloved wife of Nathan Ritzer in honor of Peter Adler's 90th birthday

YAHREZIT FUND

Barbara and Michael Bias in memory of Ruth Pasvoll, mother of Barbara Bias

Geri Kaufman in memory of her beloved parents, Molly and Bernard Pearlman

Marlene and Edward Rosenbaum in memory of Judith Yoskowitz, mother of Marlene Rosenbaum

Mary Jane Tucker in loving memory of her mother, Elsie Albert

Loretta Weinberg in memory of her beloved husband, Irwin Weinberg

Bill Helfman in memory of his mother, Betty Helfman

Wine Tasting Fundraiser

Saturday, March 13 at 7:00 p.m.

Join our Temple Emeth community on Saturday, March 13 at 7:00 p.m. and learn all about how wine goes from vineyard to bottle, from bottle to glass and from glass to you! Dive into what elements make a wine we like vs. one we dislike, learn about tannin, acid, sweetness, body, and so much more! The cost is \$25 for an individual (this will allow you to join the event with your partner, spouse, or friend, without having to purchase four bottles of wine). You can connect with, and help our Temple Emeth community!

Registration: For members of Temple Emeth (or those who have a Shul Cloud account): please use this link to register by March 3rd:

<https://www.emeth.org/event/virtualwinetasting>

For non-members (or those who do not have a Shul Cloud account): please call the office at 201-833-1322 to register.



Make your own Golem Workshops
conducted by Rabbi Shawna and Isaac Brynjegard-Bialik
with finished projects displayed by participants.



PRICE FOR CEMETERY PLOTS INCREASES JULY 1

The Bergen County Reform Temple Memorial Association is a cemetery association founded in 1954 to serve Temple Emeth. Prices for graves will increase from \$900 to \$1200 per grave effective July 1, 2021. This is the first price increase in seven years. While the \$1200 price is still well below market value, we encourage you to consider making a purchase while the \$900 price is still in effect.

Family plots of four graves or larger are available in our sections in Cedar Park and Beth El Cemeteries on Forest Avenue in Washington Township. Single graves and multiples thereof are available in our section in Riverside Cemetery located on Market Street in Saddle Brook. In accordance with the cemeteries rules, we may sell graves only to Temple members for use by those who at the time of their death are of the Jewish faith.

For more information or to purchase graves, contact David Fox at 201-836-0260 or jdjmfox@aol.com.



Rabbi Joshua Trachtenberg Memorial Library

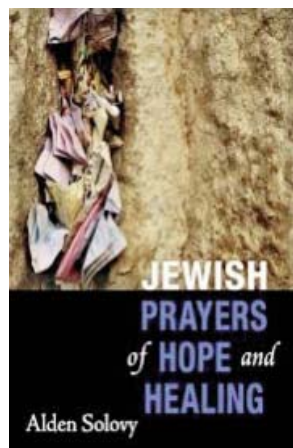
Monthly News Update: One-of-a-Kind Books
By Marion Wolf

ASSOCIATION OF JEWISH LIBRARIES ACCREDITATION



Two new books in the Rabbi Joshua Trachtenberg Memorial Library defy conventional classification. One is a collection of prayers that is unlike any prayerbook I've ever seen. The second book has elements of several genres. It must leave librarians scratching their heads, wondering where to shelve it.

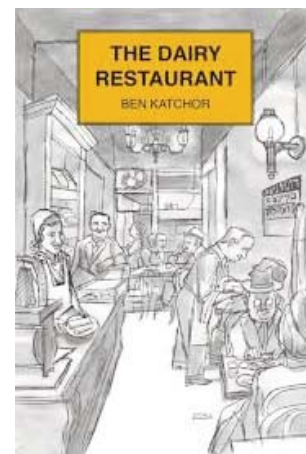
Alden Solovy is the author of Jewish Prayers of Hope and Healing. Solovy is a poet and liturgist who splits his time between Jerusalem and Chicago. After the sudden death of his wife from catastrophic brain injury in 2009, Solovy deepened his study of meditation. He created prayers that have been used by people of many faiths around the world. This collection is a spiritual gift filled with his original, eloquent liturgy suitable for all sorts of occasions. Yes, there are some prayers here praising God and some in memory of loved ones. But there are prayers, too, for those facing fertility treatment, surgery, or cancer. There are many other situations when Solovy's words can touch our hearts and help us cope.



The Dairy Restaurant by Ben Katchor is a history of dairy restaurants. But who would expect such a history to begin in the Garden of Eden?! In Genesis 3:6

Katchor says, "we have the first recorded instance of a couple splitting a single dish." The author speaks of other biblical dining experiences—Abraham's hospitality, God's preference for the smell of barbecue—and the rabbinic debates about kashrut.

The Dairy Restaurant is encyclopedic, going on to cover, among other topics, a 17th century vegetarian renaissance, the invention of the restaurant, the rise of food fads, and the intersection between culinary practice and politics. Eventually the author works his way up to New York City's now nonexistent dairy restaurants (there is a complete directory!) and his own reminiscences about them. All is related with humor; every page features the author's illustrations. Katchor takes fascinating detours all over the place. We learn, for example, how to milk a cow. We hear how Leon Trotsky, a vegetarian, came to New York City in 1917, ate in Jewish dairy restaurants, and didn't tip. Katchor tells us Frank Zappa's reaction the first time he sampled gefilte fish. We see matchbooks and menus, too.



I hope that I have whetted your appetite for these new additions to the Rabbi Joshua Trachtenberg Memorial Library!

If you would like to borrow any of these books from the Temple library please contact Teri Binder at twbinder@aol.com or Marion Wolf at marionewolf@yahoo.com.



Welcome to our New Administrative Assistant, Alison Reiser

We are excited to welcome our new Temple administrative assistant, Alison Reiser. Alison grew up outside Philadelphia, where her family belonged to Beth Or, a Reform congregation. After moving to New York, she met her husband when they were coworkers at the Bronx Zoo. They live with their two daughters and various pets in Teaneck.

Call the office and say hello to Alison, or send your greetings to her at areiser@emeth.org.

CONTRIBUTION FORM

\$ _____ Enclosed (\$10 minimum) Fund Name _____

Contributed by _____

Send Acknowledgment to: _____

Address _____

Message _____

Use this form to send an acknowledgment for life cycle events to your friends and family and at the same time perform the mitzvah of tzedaka. Call the office with any questions.

Contributory Funds – contributions are deposited in the Temple Emeth Funds Account and drawn for use by the designated committee

- Adult Education Fund
- Beautification Fund
- College Kids Fund
- Abe Golomb Religious School Scholarship Fund
- Library Fund
- Museum Fund
- Janice Preschel Social Action Fund
- Rabbi Louis J. Sigel Scholar-in-Residence Fund
- Temple Emeth Fund
- Viewpoints Fund
- Adult Kallah Fund
- Paul S. Lazar Caring Community Fund
- Emeth Teen Community Fund
- Ilana Hed Religious School Fund
- Music Fund
- Ritual Fund
- Straussman Memorial Youth Award Fund
- Torah Repair Fund
- Yahrzeit Fund
- Albert & Mildred Otten Institute for Living Arts
- Children's Worship Fund
- Environment Fund
- Inscribed Prayerbook Fund (\$50 minimum)
- Prayerbook Fund
- Margery Rothschild Memorial Israel Fund
- Streaming Fund
- Joshua Trachtenberg Memorial Lecture Fund
- Youth Committee Program Fund

Endowed Funds – contributions are added to principal held by the Temple Emeth Endowment Foundation with fund income distributed yearly

- Adult Kallah Scholarship Fund
- Lazar Educational Enrichment Fund
- Rabbi Louis J. Sigel Endowment Fund
- Dru and Ted Greenwood Youth Awards Fund
- Grunstein-Liberman Endowed Fund
- Paul S. Lazar Caring Community Endowed Fund
- Ned and Doris Siner Music Fund
- Honigberg/Howard Religious School Scholarship Fund
- Alfred and Helen Levin Youth Award Fund
- Temple Emeth Endowment Fund

Other Funds – contributions are used at the discretion of the recipient

- Rabbi's Discretionary Fund
- Cantor's Discretionary Fund

Yom Ha'Atzmaut Fundraiser



Join our Temple Emeth community for Yom Ha'Atzmaut & fundraise while raising a glass in celebration of Israel Independence. We will learn all about Israeli wines and spirits from Milk & Honey Distillery. You will have the choice of receiving 2 bottles of wine and 1 bottle of whiskey, 2 bottles of wine and 1 bottle of gin, or 2 bottles of wine and 1 bottle of whiskey and 1 bottle of gin. You will also receive 4 tasting cards with information about the Milk & Honey Distillery products.



When: Saturday, April 10, 2021 7 p.m. — 9 p.m.

Details: Drive-By Pick-Up details & the Zoom link will be sent to all registered participants.

Cost:

Package 1: \$100 for an individual or household with 1 tasting event bag (bag includes 2 full bottles of wine 1 white and 1 red, Milk & Honey Levantine Gin, and 4 tasting cards).

Package 2: \$110 for an individual or household with 1 tasting event bag (bag includes 2 full bottles of wine 1 white and 1 red, Milk & Honey Classic Single Malt Israeli Whiskey, and 4 tasting cards).

Package 3: \$140 for an individual or household with 1 tasting event bag (bag includes 2 full bottles of wine 1 white and 1 red, Milk & Honey Levantine Gin, Milk & Honey Classic Single Malt Israeli Whiskey, and 4 tasting cards).

\$30 for an individual: (this will allow you to join the event with a partner, spouse, or friend, without having to purchase wine/spirits).

RSVP by Sunday, March 28, 2021

Registration: Temple Emeth members (or those who have a Shul Cloud account):

<https://www.emeth.org/event/wineandspirits>

For non-members (or those who do not have a Shul Cloud account): please call the office at 201- 833-1322 to register.

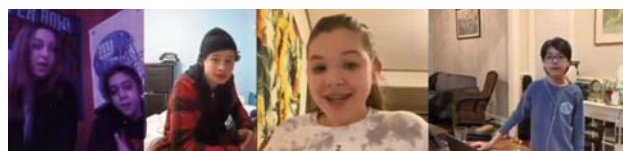


PURIM FUN

Megillah reading
 Artwork of our 2nd and 3rd graders
 A skit retelling the Purim Story
 A virtual junior choir performance
 A special video of the clergy prepared by the Stream Team
 A virtual costume parade and the two holiest superheroes around



Photo by Robert Kahn





Award Winner in Results and Customer Service

A realtor for all seasons

Wendy Wineburgh Dessanti

Sale prices are up 5-10%.

Ask me what your house is worth.

Wishing you a healthy and happy 2021!

Broker/Sales Associate

c: 201 310-2255 (preferred)

c: 201 569-7888

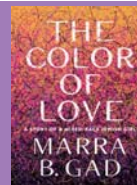
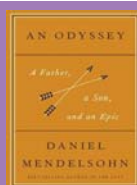
e: wendydess@aol.com

Eastern Board of Realtors
2018 Realtor of the Year
award winner

TENAFLY



Serving Bergen County for over
25 Years with Integrity,
Professionalism and Results



TEMPLE EMETH BOOK GROUP SELECTIONS 2021

The Book Woman of Troublesome Creek by Kim Michele Richardson

March 18

An Odyssey: A Father, A Son, and an Epic by Daniel Mendelsohn

April 15

The Color of Love: A Story of a Mixed-Race Jewish Girl by Marra B. Gad

May 20



Amazon helps to support the Temple
when you order by using the
Amazon.com link on our website.

Use the Amazon Link on our Webpage

Support Temple Emeth by using our special
Amazon link to make purchases on Amazon.com.

Just visit www.emeth.org and click on the

Amazon.com button

at the bottom of each page,

then purchase to your heart's content!

BERGEN COUNTY REFORM TEMPLE MEMORIAL ASSOCIATION

Serving Temple Emeth

Burial Plots at Reasonable Prices

PRICE INCREASE EFFECTIVE JULY 1, 2021

David Fox • 201-836-0260

jdjmfox@aol.com

*Please support our advertisers and tell them you saw their ad
in the Temple Emeth Bulletin*



201-928-0100

201-928-0406 (FAX)

e-mail: senweinberg@njleg.org

LORETTA WEINBERG

NEW JERSEY STATE SENATE

MAJORITY LEADER

545 CEDAR LANE
TEANECK, NJ 07666

SENATOR, 37TH DISTRICT
BERGEN COUNTY

Minutes of Board of Trustees Meetings

Minutes of all board meetings are kept on file in
the office for anyone interested in seeing them.

Ancestry@Emeth

What is your family story?

If you would like to participate in
the next Ancestry@Emeth
exhibit, please contact

Barbara Balkin at
dkrm505@yahoo.com





Temple Emeth
1666 Windsor Road
Teaneck, New Jersey 07666
www.emeth.org

Emeth

The Bulletin of Temple Emeth of Teaneck, New Jersey
A Member of the Union for Reform Judaism:
Serving Reform Congregations in North America