

Temple Emeth

Celebrating 75 years

Bulletin

Temple Emeth of Teaneck, New Jersey
An Affiliate of the Union for Reform Judaism
Serving Reform Congregations in North America

Volume 76, Number 9

www.emeth.org

Sivan/Tammuz 5783

June 2023

Celebrating 75 Years

An entertaining evening at the May 6th Gala



More photos on page 7

www.emeth.org

◆ ◆ ◆ ★ CELEBRATING OUR 75TH YEAR ★ ◆ ◆ ◆

PRESIDENT.	Michael Robinson	president@emeth.org
FIRST VICE-PRESIDENT	Michael Goldberg	firstvp@emeth.org
SECOND VICE-PRESIDENT.	Flip Bernard	secondvp@emeth.org
THIRD VICE-PRESIDENT.	Lisa Eig	thirdvp@emeth.org
SECRETARY.	Marty Breznick	secretary@emeth.org
ASSISTANT SECRETARY.	Arnie Graber	asstsecretary@emeth.org
FINANCIAL SECRETARY.	Alan Winters	financialsecretary@emeth.org
ASSISTANT FINANCIAL OFFICER.	Eric Zaretsky	asstfinancialofficer@emeth.org
TREASURER.	Gary Richards	treasurer@emeth.org

Barbara Balkin bulletin@emeth.org

ASSISTANT EDITORS: Marion Wolf and Judy Fox

From the Editor - Flyers are for the weekly or mid-month email and should be sent to Suzannah Mercado at smercado@emeth.org cc: areiser@emeth.org

<i>Bulletin Deadlines</i>			<i>Mid-Month Mailing Deadlines</i>	
<i><u>Month</u></i>	<i><u>Deadline Date</u></i>	<i><u>Publication Date</u></i>	<i><u>Deadline Date</u></i>	<i><u>Publication Date</u></i>
September	August 18	September 2	September 10	September 16
October	September 18	October 1	October 12	October 17
November	October 18	November 1	November 9	November 14
December	November 18	December 1	December 12	December 18
January	December 18	January 2	January 10	January 16
February	January 18	February 1	February 11	February 19
March	February 17	March 1	March 8	March 13
April	March 17	April 1	April 9	April 16
May	April 18	May 1	May 8	May 15
June	May 18	June 1	June 10	June 17

The Temple Emeth Bulletin is published monthly from September through June. Advertising Rates for Ad Size 2" x 3 1/2"

	Member	Non-Member
1 Month	\$ 55	\$ 75
5 Months	\$250	\$350
10 Months	\$330	\$450

For additional information, call (201) 833-1322

Message From the Rabbi

In February, our Board of Trustees voted to pursue an educational collaboration with Temple Sinai of Bergen County in Tenafly. The proposal, the debate and the vote understandably received a lot of attention, as it had implications for the future of our Temple, and raised a question about how Temple Emeth students attending classes in another synagogue's building will create an emotional attachment to Temple Emeth.

To address this concern, the same resolution that authorized negotiating with Temple Sinai (to date the negotiations are ongoing) also required that we have programming that strengthens the connection of Temple Emeth families to each other, our clergy, and our building.

The Education Sub-Committee of the Strategic Planning Committee has been working to ensure that this part of the mandate is fulfilled by creating the "Emeth Kesher—Emeth Connection" program.

Emeth Kesher is a series of programs, about two a month, that bring our students and families together for a variety of activities. There are simple family gatherings, like having a potluck dinner before Family Shabbat Services on the first Friday of the month. Many of the activities revolve around holidays, but some, like attending the B'nai Mitzvah Learner's Service, are annual traditions of a different nature.

Perhaps the most important guiding value of Emeth

Kesher is that it relies on the resources of Temple Emeth to bring us together. For example, it expands our existing Dor L'dor program, in which young people visit our Temple seniors in their homes for meaningful intergenerational conversations. It also seeks to bring our families into our Temple garden in the spring to learn Jewish values around food and agriculture and to see how the crops there are tended by our volunteers.

To coordinate the Emeth Kesher programming, the Board of Trustees created a new staff position, and the 2023-24 budget includes funding for this position.

But the coordinator cannot create the programming and the excitement for it alone. He or she will require a committee of dedicated volunteers to promote, attend, and help lead these programs.

In May, we offered two tributes to our Religious School program, one as part of our Milestone Membership Service, and the other during our Moving-Up Ceremony. At both I said that closing our

in-house Religious School was a change that no one wished for.

This change, however, is an opportunity to rethink the ways our young people and their families interact with each other and establish Temple Emeth as their spiritual home. With our collective energy and our creativity, we can make this vision a reality.



Rabbi Steven Sirbu



Rabbi Sirbu at his HUC-JIR ordination ceremony on May 4 receiving his Doctor of Divinity hood in honor of his twenty-fifth year in the rabbinate.



From the Religious School

“V’tain B’libeinu Lishmoa, Lilmod, Ul’lamed.”
“Inspire us to Hear, to Learn, and to Teach.”

Dear Temple Emeth Family,

I was never good saying goodbye. Like my father, I tend to walk family and friends to their cars after they leave my home and I wait by their car doors for more conversation, certain that we’ve left out something important. So this farewell to my Temple Emeth friends and family is not going to be any different!
Too many blessings to count!

Our students, families, and teachers loved studying, praying together, and celebrating holidays with blessings and song. We became a *Kehilla Kedosha* - A Sacred Community. We’ve had great times together and jointly crafted lofty educational goals. We have practiced and tasted some of the very best Jewish cultural and religious experiences.

On a typical day at Temple Emeth Religious School, our students might learn a new prayer in Hebrew and study some Torah. They might encounter the amazing creativity and innovation of the modern state of Israel. And all their lessons would be enriched with music, art, and storytelling.

For me, it’s all been a gift, a “*matanah*.” I’ve loved every minute, even the worries and challenges. The Temple and Religious School both have given me generous support and smiles of appreciation. The kids, parents, and extended families have been a steady source of delight and blessings of all kinds.

A big Toda Raba and Shalom to our teachers Mora Marla, Mora Allyson, Moreh Stuart, Mora Susan, Mora Nancy and our Tfila V’Shira teachers Mora Amanda and Moreh Adam! They made this an exciting year filled with relevant, creative programs and celebra-

tions, combining expertise in Jewish education with love and respect for each child. Our Hebrew tutors, Judy Fox and Marion Wolf deserve special thanks for their time, knowledge, and patience!

A special Toda Raba to Rabbi Sirbu and Cantor Tilem who contributed their strengths and talents so that our Religious School could thrive.

Toda Raba and a BIG thank you to Barbara Shater for her dedication to Temple Emeth and our Religious School. She is talented and creative and has been a true asset here, caring for students, parents, staff, and me for the past 10 years.

To David Fox, your unwavering commitment, guidance, and friendship to our Religious School, Barbara Shater, and me has been a blessing. To Barbara Balkin, our photographer extraordinaire, your talent and time documenting the “life” of our Religious School will keep the memories alive. To you both, we say with love and appreciation, we are forever grateful.

We remember Ilana Hed and Marc Klausner for their passionate devotion to our students and their impact on our school and our lives.

We’ve had an unforgettable time together building a committed and loving Jewish community. And as we’ve ended our communications over the years, we thank everyone for being an integral part of our Religious School Community; you made the difference...

B’vracha,
Dora Geld Friedman

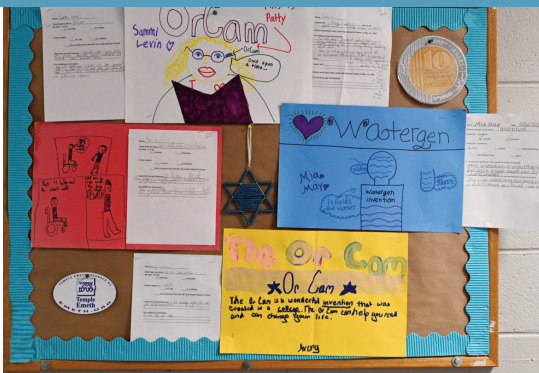


Dora Geld Friedman

If you happen to find yourself walking through the hallways of the Religious School, take a moment to learn about a few Israeli inventions. Students in Mora Nancy’s class have been adding to their knowledge of Israel by learning about Israeli inventors and inventions. Included in her class is a discussion of the Jewish core value, tikkun olam, and how “ambassadors” for the inventions have brought them to the far reaches of the world, to make life easier and oftentimes, more sustainable.



Photo by
Barbara Shater



Mora Marla Levine’s
students make food
pantry donations.

Message from President Michael Robinson

As I write this article, I find myself filled with mixed emotions. It marks the end of my term as your Temple President, a role that has been both challenging and fulfilling. Today, I want to reflect on our accomplishments and express my gratitude to those who have supported me throughout this journey.

When I first assumed the presidency, we were navigating the uncertainties of the pandemic. Our sacred spaces felt empty, and our gatherings were limited to virtual platforms. However, with resilience and determination, we adapted and found new ways to serve our community. Gradually, we resumed in-person events and services while continuing to offer virtual options. This expansion of our reach has allowed us to embrace innovation and strengthen our connection with congregants near and far.

Another significant achievement during my tenure has been the initiation of a new strategic plan. Headed by the capable leadership of Flip Bernard and Michael Goldberg, the Strategic Plan Steering Committee worked tirelessly to identify the steps necessary to propel Temple Emeth forward. Now, as Michael Goldberg takes the reins as our new president, I have full confidence in his ability to guide us through the implementation phase of this vital endeavor helping to ensure our Temple's future.

I want to extend my heartfelt gratitude to the past presidents, officers, and board members who have provided

invaluable support and guidance throughout my presidency. Their wisdom and counsel made a challenging job more manageable. I am also deeply appreciative of our office staff, particularly Suzannah and her dedicated team. They have been instrumental in assisting me with their unwavering commitment to our temple's mission.



Michael Robinson

To Rabbi Sirbu and Cantor Tilem, thank you so much for your sacred partnership with me these last two years. Your ability to work with multiple presidents, adjusting to new leadership styles, is a testament to your professionalism and commitment to our congregation.

Lastly, I must acknowledge Marcia and the rest of my family for their unwavering support. Their encouragement during moments of self-doubt gave me the strength to carry out my responsibilities with confidence.

While my tenure may be coming to an end, my commitment to this community remains unwavering. As an immediate past president, I look forward to continuing my involvement in a different capacity, supporting Temple Emeth in any way I can.

In closing, I want to leave you with the words, "See you around the quad." It has been an honor and a privilege to serve as your president, and I have full faith in the bright future that lies ahead for our beloved temple.

B'Shalom
Mike R



**Join us for the
Annual Congregational
Meeting
Tuesday, June 6
at 7:00 p.m.
in the Social Hall**

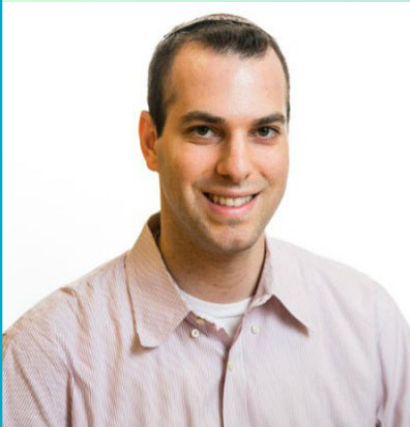
*Doors open at 6:30 for schmoozing
and refreshments*



**PLEASE JOIN US FOR A B'YACHAD BREAKFAST
ON JULY 9, 2023 AT 10:30 AM - 12:15PM**

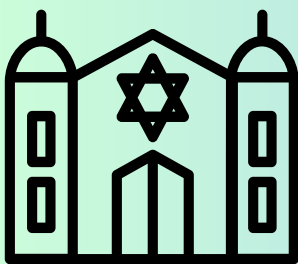


Eitan Kastner will present "American Jewish History in Eight Synagogues"



From the historic 1763 Touro Synagogue in Rhode Island (the oldest American synagogue building still standing), we can actually track our history in America through our synagogues.

Now in honor of our nation's birthday, Eitan Kastner will take us through slides and stories of eight significant congregations and their buildings that reflect our own growing and ever-changing history.



A graduate of Yeshiva University, Mr. Kastner earned his MA at the University of Chicago, focusing primarily on American religious history. He shares that knowledge on a regular basis, teaching history and art history at Frisch and working as a licensed New York City tour guide, leading excursions with Jewish and historical themes at the Metropolitan Museum of Art.

Temple members and non-members are welcome - Invite your friends!

Please RSVP by July 1st by emailing byachad@emeth.org, calling 201-833-1322, or returning this form to Temple Emeth for the B'yachad Breakfast featuring Eitan Kastner "American Jewish History in Eight Synagogues."

Name _____ Number Attending _____

Phone Number _____ Email address: _____

Amount Enclosed (\$8.00 per person) _____





Milestone Membership Shabbat May 12



Jill Kravitz spoke about her membership experiences and Marty Breznick welcomed the milestone members.



Stacey Butler gave a tribute to the Religious School volunteers

The 3rd, 4th, and 5th graders conducted services under the direction of Amanda Eastman and accompanied by Adam Kohane. Students received flowers to give their mothers on Mother's Day, May 14th.





Thank you Mora Dora



An afternoon of celebrating, schmoozing, eating, tributes, and dancing in honor of Morah Dora Geld Friedman.



Services and S'machot

14 Sivan 5783
Friday, June 2

Shabbat Naso
Family Shabbat Service at 7:30 p.m.
Honoring our High School graduates
Etz Chayim and Shir Chadash sing.
Oneg sponsored by Eric Zaretsky and Yoshiko Niiya in
honor of the Bar Mitzvah of their son, Zander Zaretsky.

Saturday, June 3

Torah Study at 9:00 a.m.
Shabbat Morning Service and Bar Mitzvah of
Zander Zaretsky at 10:30 a.m.

Torah Portion – Naso
Numbers 4:21-7:89

Haftarah – Judges 13:2-25

21 Sivan 5783
Friday, June 9

Shabbat B'haalot'cha
Shabbat Evening Service at 8:00 p.m.
Music in honor of our 75th Anniversary
Oneg sponsored by Mimi Sigel, Judy and David Fox and
Debbie and Ken Rutz in loving memory of Rabbi Louis J.
Sigel on his 18th Yahrzeit, and in honor of
Rabbi Steven Sirbu on receiving his Doctor of Divinity
(Honoris Causa) from HUC-JIR.

Saturday, June 10

Torah Study at 9:00 a.m.
Shabbat Morning Service at 10:30 a.m.

Torah Portion – B'haaalot'cha
Numbers 8:1-12:16

Haftarah – Zechariah 2:14-4:7

28 Sivan 5783
Friday, June 16

Shabbat Sh'lach L'cha
Shabbat Evening Pride Service at 8:00 p.m.
Guest speaker Deb Guston, Chairperson of the Bergen
County LGBTQ Advisory Committee. Kol Emet sings.

Saturday, June 17

Torah Study at 9:00 a.m.
Shabbat Morning Service at 10:30 a.m.

Torah Portion – Sh'lach L'cha
Numbers 1:1-4:20

Haftarah – Joshua 2:1-24

5 Tammuz 5783
Friday, June 23

Shabbat Korach
Shabbat Evening Service at 8:00 p.m.
Installation of Officers and Trustees

Saturday, June 24

Torah Study at 9:00 a.m.
Shabbat Morning Service at 10:30 a.m.

Torah Portion – Korach
Numbers 16:1-18:32

Haftarah – I Samuel 11:14-12:22

June 2023

Sunday	Monday	Tuesday	Wednesday	Thursday	Friday	Saturday
				1 12th of Sivan 5783 7:30pm - 8:30pm Officer's Meeting @ ZOOM	2 13th of Sivan 5783 7:30pm - 8:30pm Family Shabbat Service - Honoring Our HS Graduates @ Sanctuary	3 14th of Sivan 5783 9:00am - 10:00am Torah Study (Hybrid Learning in Youth Lounge and on Zoom) 10:30am - 12:00pm Shabbat Morning Service - Zander Zaretsky BM @ Sanctuary
4 15th of Sivan 5783	5 16th of Sivan 5783 10:30am - 12:30pm Yiddish Class @ ZOOM	6 17th of Sivan 5783 7:00pm - 9:00pm Annual Congregational Meeting @ Social Hall	7 18th of Sivan 5783 12:00pm - 1:00pm Lunch & Learn @ Library	8 19th of Sivan 5783 7:30pm - 9:00pm Board of Trustees Meeting @ Youth Lounge	9 20th of Sivan 5783 8:00pm - 9:00pm Shabbat Evening Service - Special Music in Honor of our 75th Anniversary @ Sanctuary	10 21st of Sivan 5783 9:00am - 10:00am Torah Study (Hybrid Learning in Youth Lounge and on Zoom) 10:30am - 12:00pm Shabbat Morning Service @ Sanctuary
11 22nd of Sivan 5783 9:45am - 10:45am Social Action Committee Meeting	12 23rd of Sivan 5783 10:30am - 12:30pm Yiddish Class @ ZOOM	13 24th of Sivan 5783 7:30pm - 9:30pm Movies that Mattered - Walk on Water @ Social Hall	14 25th of Sivan 5783 12:00pm - 1:00pm Lunch & Learn @ Library 7:30pm - 8:30pm Caring Committee Meeting @ Library 7:45pm - 9:00pm Kol Emet Rehearsal @ Sanctuary	15 26th of Sivan 5783 7:30pm - 8:30pm Book Group Planning Meeting 7:30pm - 8:30pm Ritual Committee Meeting 7:30pm - 8:30pm Viewpoints Committee Meeting @ ZOOM	16 27th of Sivan 5783 8:00pm - 9:00pm Shabbat Evening Service - Pride Service - Kol Emet Sings @ Sanctuary	17 28th of Sivan 5783 9:00am - 10:00am Torah Study (Hybrid Learning in Youth Lounge and on Zoom) 10:30am - 12:00pm Shabbat Morning Service @ Sanctuary
18 29th of Sivan 5783	19 30th of Sivan 5783	20 1st of Tammuz 5783	21 2nd of Tammuz 5783	22 3rd of Tammuz 5783	23 4th of Tammuz 5783 8:00pm - 9:00pm Shabbat Evening Service - Installation of Officers and Trustees @ Sanctuary	24 5th of Tammuz 5783 9:00am - 10:00am Torah Study (Hybrid Learning in Youth Lounge and on Zoom) 10:30am - 12:00pm Shabbat Morning Service @ Sanctuary
25 6th of Tammuz 5783	26 7th of Tammuz 5783 10:30am - 12:30pm Yiddish Class @ ZOOM	27 8th of Tammuz 5783	28 9th of Tammuz 5783	29 10th of Tammuz 5783	30 11th of Tammuz 5783 8:00pm - 9:00pm Shabbat Evening Service-Annual NCJW Shabbat @ Sanctuary	

Visit the website at <https://www.emeth.org/calendarwiz> for the most updated calendar information.

Good & Welfare

Condolences to...

Teri Binder on the loss of her aunt, Lorraine Weinberger.

Mazel Tov to...

Judy Distler on her granddaughter Madison's graduation from college.

Emma Feuer on her Confirmation and Mazel Tov to her parents, **Jamey and Danielle**.

Mary Jane Tucker on the Bar Mitzvah of her grandson, Micah Schneider.

Eric Zaretsky and Yoshiko Niya on the Bar Mitzvah of their son, Zander Zaretsky.

Social Action in Action

Teaneck Pride

Teaneck Pride is inviting you to join the celebration and kick off of our Pride Month activities on **Sunday, June 4**.

Pride Parade - Noon to 2 p.m.

Starts at the intersection of Cedar Lane and Queen Anne Road and goes to Votee Park. Total length about 3/4 of a mile. To march in the parade, you should be at the start by 11:30 and all you would need is a banner for your group, or you could join an existing group. Street parking is available. Please let us know if you'll be able to participate.

Teaneck LGBTQIA+ Flag Raising - 2:30 to 3 p.m.

Flag Pole at Votee Park Stadium

Family Fun Day - 3 to 7 p.m. featuring food, games, playground, bouncy house, etc.

At the Votee Park Bandshell

Look for an announcement of a photo exhibit, "This is Who We Are" at the Puffin Cultural Center and information about our Pride Film Festival.

For further information, please contact Lynn Chaiken at 551-656-1681 or lynnchaiken@gmail.com. You can also check our other Pride Month events on our website TeaneckPride.com

Hope you'll be able to join us!

Our Planet, Our Future, NJ Call to Climate Action

There are a number of fossil fuel-powered projects which are proposed, and this environmental coalition opposes them as being environmentally harmful. Events as follows:

- **Sunday June 4** – Community Outreach Day in Jersey City. One of the largest community events of the year in J.C. We'll be talking to local residents about the \$12 billion taxpayer-funded plans for a massive, ill-conceived expansion of the NJ Turnpike in Hudson County (approach to the Holland Tunnel) which would increase traffic and tailpipe pollution in environmental justice communities. At 9:30 a.m. and 3:30 p.m., members of the coalition will be speaking with Jersey City residents describing the facts and warnings about this proposed highway expansion.
- **Monday June 5** at 4:00 p.m. – Rally and March in Newark. Gather at Downbottom Park in Newark, and march for about 1/2 mile to Riverfront Park, where there will be a rally to urge Governor Murphy to stop proposed fossil fuel-generated power plants in Newark and Kearny.

There will also be a demonstration in Woodbridge on June 3rd at 11:00 a.m. to stop the proposed Woodbridge Gas Plant. By the time this is published, there will have been a march and rally in Gloucester City (South Jersey) to protest the proposed Liquid Natural Gas (LNG) Terminal in Gibbstown.

If you have questions, or need clarification, please contact Paul Kaufman. paulkaufman65@optonline.net

Harriet Hyams spoke to Religious School students about the Temple's stained glass windows which she designed.



Rabbi Joshua Trachtenberg Memorial Library

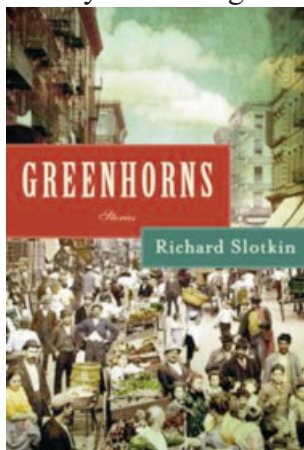
Monthly News Update: Short Stories and Poems
By Marion Wolf

ASSOCIATION OF JEWISH LIBRARIES ACCREDITATION



The Rabbi Joshua Trachtenberg Memorial Library has acquired two books of short stories and one of poetry. After all, sometimes you crave something shorter than a novel. I would say short and sweet, but these tales and poems are more poignant and deep than sweet.

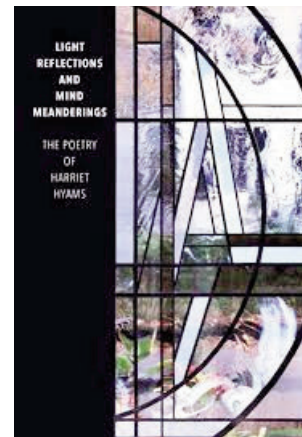
Greenhorns is a collection of stories by Richard Slotkin. The author is a scholar of American history and prize-winning historical novelist, who taught for many years at Wesleyan University. He brings his knowledge to bear in these seven stories about immigrants to America in the early 20th century. His characters include a kosher butcher with gambling problems, an elegant woman who has witnessed unspeakable horror, and a boy who clings to his father's old-world code of honor in his new home in Brooklyn. The dialogue rings true and Slotkin's details are vivid, evoking for me memories of immigrants I have known, and making me wonder if events described really occurred. The author acknowledges that his stories are based on the real-life experiences of family members who came to the U.S. from Russia or Poland between 1900 and 1921.



Tehila Lieberman's debut collection of nine short stories is called Venus in the Afternoon. It is the winner of the Katherine Anne Porter Prize in Short Fiction. The author writes about love, lust, doomed relationships, betrayal, loss, and death. Reviewing this book in *Booklist*, Patty Wetli says, "A young widow struggles to raise her infant son; a father yearns for a relationship with his estranged daughter; a husband succumbs to grief over his dying wife...Lieberman has a gift for immediately draw-

ing readers into the narrative and then bringing each tale to a satisfying, if frequently ambiguous, conclusion." And Jill McCorkle praises Lieberman's "stunning" collection, describing it as "beautifully written and emotionally compelling in ways that leave the reader spellbound."

Finally there is Light Reflections and Mind Meanderings: The Poetry of Harriet Hyams. If the name Harriet Hyams sounds familiar to you, it may be because she is the artist who designed Temple Emeth's stained-glass windows (and recently spoke about them to our Religious School students). Hyams has had a long, successful career creating not just architectural stained glass, but also paintings, drawings, and sculptures. Pictures of Hyams' artwork are interspersed among her poems. Who knew she also wrote wonderful, thought-provoking poems? Those poems are mostly in chronological order; they draw on her observations of life, love, and loss in the passage of time. The author/artist has inscribed our library's copy "To Temple Emeth with my best wishes forever." Now we have two treasures from Harriet Hyams!



These and many other good books await you at the Rabbi Joshua Trachtenberg Memorial Library.

If you would like to borrow any of these books or DVDs from the Temple library contact Teri Binder at twbinder@aol.com or Marion Wolf at marionewolf@yahoo.com.

CONTRIBUTIONS

ADULT EDUCATION FUND

Paul Rosenberg in memory of his beloved brother,
Mark Rosenberg

BEAUTIFICATION FUND

Sue Keusch in memory of her beloved brother, Wade
Hammel

EMETH TEEN COMMUNITY FUND

Michael and Gayle Goldberg wish Mazel Tov to
Emma Feuer on her Confirmation

ILANA HED RELIGIOUS SCHOOL FUND

Judy and David Fox in honor of the Bar Mitzvah of
Zander Zaretsky, son of Yoshiko Niiya and
Eric Zaretsky

Shana and Greg Janoff thank Mora Dora for the
love she gave to the Temple Emeth community

JANICE PRESCHER SOCIAL ACTION FUND

Judy Distler congratulates three Temple Emeth
women who are NCJW Bergen County
Women of the Century: Bea Podorefsky, Ann
Levenstein, and Ina Miller-Silverstein

Judy Eichinger wishes Judy Distler a Mazel Tov on
the graduation of her granddaughter Madison
from college
wishes Mary Jane Tucker a Mazel Tov on the
Bar Mitzvah of her grandson Micah Schneider

LIBRARY FUND

Mary Jane Tucker in memory of Lorraine
Weinberger, beloved aunt of Teri Binder

MUSEUM FUND

Dora Geld Friedman with gratitude to everyone who
made her farewell party so special and to
Barbara Balkin, photographer extraordinaire,
Toda and Thank you for your time and talent
keeping memories alive

PAUL S. LAZAR CARING COMMUNITY FUND

Carlene Fleishman sends get well wishes to Greg
Janoff

Michael and Gayle Goldberg in loving memory of
Gayle's beloved father, Alan Rosenfeld
thank Marsha and Morris Sobel for
co-chairing the Spring Gala

Lynne and Bill Graizel thank Marsha and Morris
Sobel for co-chairing the Spring Gala

RABBI'S DISCRETIONARY FUND

Elinor Buchbinder wishes Rabbi Sirbu a Mazel Tov
on receiving an honorary doctorate from
Hebrew Union College-Jewish Institute of
Religion

Doug and Nickie Falk wish Rabbi Sirbu a Mazel Tov
on receiving an honorary doctorate from
Hebrew Union College-Jewish Institute of
Religion

Carlene Fleishman wishes Rabbi Sirbu a Mazel Tov
on receiving an honorary doctorate from
Hebrew Union College-Jewish Institute of
Religion

Seth and Amy Ginsberg in memory of Seth's
beloved father, Ira Ginsberg

Shana and Greg Janoff in honor of Rabbi Sirbu's 25
year anniversary of ordination

Fran and Frank LaBarbera wish Rabbi Sirbu a
Mazel Tov on receiving an honorary doctorate
from Hebrew Union College-Jewish Institute
of Religion

TEMPLE EMETH FUND

Dora Geld Friedman with Love and Appreciation
expresses Toda and Thank You to:

Beth Pascarello
Elona Olevsky
Tammy Hecht
Damary Zaken
Eley Kohn
Carla Silver
Amanda Eastman
Suzannah Mercado, and
Barbara Shater for the most amazing party full of
friendship and joy

TORAH REPAIR FUND

Nancy Mednick in memory of her beloved father,
William Norman

YAHARZEIT FUND

Martin and Glenda Adelman in memory of their
beloved grandsons, Eric Adelman and Alex
Clarke

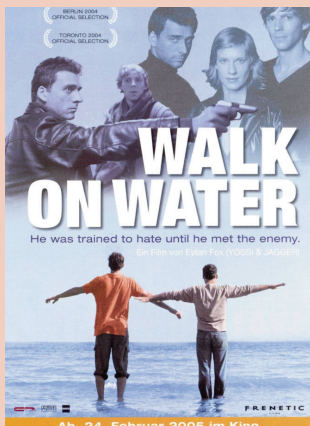
Larry Bauer in memory of his beloved father, Henry
Bauer

Fran Butensky in memory of her beloved husband,
Irwin Butensky

Vera Horowytz in memory of her beloved husband,
Harold Horowytz

Carl Nahm in memory of his beloved mother,
Hedwig Nahm, and his beloved grandfather,
Karl Nahm

Larry and Carla Silver in memory of Carla's
beloved mother, Pauline Nadler;
Larry's beloved father, Meyer Silver; and both
of their beloved aunts, Goldie Salkin and
Rose Nadler



Movies That Mattered

The next movie is “Walk On Water”
on Tuesday, June 13th at 7:30 p.m.

An Israeli Mossad agent is given the mission to track down and kill an ex-Nazi officer who might still be alive. Pretending to be a tourist guide, he befriends the Nazi's grandson, in Israel. The two men set out on a tour of the country during which the boy challenges the agent's values.

Refreshments will be served.

Temple Emeth Book Group Schedule

June 15

Planning Meeting



Paul S. Lazar Caring Community

The Paul S. Lazar Caring Committee can offer rides to and from Temple services and events for congregants in need. The rides may be from other congregants or from a ride-sharing service like Uber.

Please contact Gayle Goldberg
in advance at 571-278-8523
if you need a ride.



Temple Emeth Intergenerational Community Garden



Gardeners are busy
preparing beds and
planting seeds.



Morris Sobel celebrated the 65th anniversary of his Bar Mitzvah by reading the Torah and Haftarah, as well as presenting a D'Var Torah.

Summary of Minutes of the April 20, 2023 Board of Trustees Meeting

Rabbi Sirbu reported that, as part of the celebration of the Temple's 75th Anniversary, Rabbi Deborah Prinz will make two presentations on the last day of the Temple's Religious School this year on May 21. Temple member Mike Eastman has volunteered to prepare *buñuelos*.

Financial Secretary Alan Winters reported that the Temple's current membership of 322 units has made aggregate voluntary commitments for the 2022-23 fiscal year of more than \$463,791, of which \$433,714 (about 93%) has been collected to date, a collection rate consistent with FY 2021-22.

Karen Rappaport, chair of the Viewpoints Committee, asked the Board to consider a proposal formalizing the Temple's commitment to principles of diversity, equity, and inclusion. The Board adopted a resolution requiring participation by Trustees and encouraging participation by the clergy, staff, and congregation in DEI training.

Stefanie Stokes, as chair of the Nominating Committee, presented the proposed slate of Officers and Trustees 2023-2024.

Flip Bernard, co-chair of the Strategic Planning Steering Committee, announced that Steve Clark is chairing a new Membership and Marketing Committee. In June the Strategic Plan Steering Committee will be replaced by a Strategic Plan Implementation Committee.

Stuart Breslow, co-chair of the Steering Committee's Finance Subcommittee, presented a series of recommendations. The Board voted to require monthly financial reports, continue use of the voluntary commitment model, modify liaison arrangements with the Bergenfield Board of Education, appoint a committee on alternative sources of income, and consider an active adult demographic in the Temple Emeth vicinity for recruitment.

WHAT IS TEMPLE EMETH'S TEEF?

We are in the midst of celebrating Temple Emeth's 75th Anniversary! How proud we are of Emeth's history and its many contributions to the local and larger community. We can thank our clergy, lay leadership, and the support and generosity of our members for our continued vitality and financial viability.

One important aspect of Temple Emeth's financial picture is the existence of the Temple Emeth Endowment Foundation (TEEF). A campaign in 1983, for Temple's 36th Anniversary, raised monies for our first endowment fund.

TEEF was established as a formal foundation in 1991 by the Temple's Board of Trustees under Temple co-presidents, Micki Grunstein and Diane Winer, as a charitable, non-profit corporation to safeguard these endowment funds and invest them for Temple's sole benefit. Sue Keusch was the president from the inception until about 10 years ago and remained a board member only until recently. Sue's contributions and dedication have been immense. David Fox took over as president after Sue and continues in that role to this day. TEEF's current board members include Sue Breznick, Steve Chaiken, Wendy Wineburgh Dessanti, Idajean Fisher and Laura Kirsch, who has served as TEEF's legal counsel all these years.

TEEF's current assets are \$430,000. It has provided a safety net and necessary loans to the Temple throughout its history at low interest rates. Some examples include a 30-year long term loan with a \$95,000 balance remaining from the late 90's building addition and a short-term, one year borrowing agreement which was recently implemented for a \$98K loan for overdue kitchen renovations, that we are pleased to say, has recently been repaid.

Donors through the years contribute to a large variety of restricted funds (specifically how income and earnings are used) which support music, the arts, education, youth, caring community and unrestricted funds which support Temple's operating expenses and more. This certainly enriches our programming and events. Temple members can contribute as little as \$10 at any time to an existing fund, and with a substantial donation of \$5,000 or more, may actually create a new fund in honor or memory of someone and be recognized, if so desired. This beautifully embraces the concept of posterity.

We hope this information is helpful. We encourage you to reach out to us if you have any questions about TEEF, or if you would like to explore how you can contribute to TEEF with current or deferred gifts. Feel free to reach out to David Fox at jdjmfox@aol.com or any of its Board members.

We thank you for your interest and any support you can provide.
Chazak, Chazak, V'nitchazek May we go from strength to strength!

Wendy Wineburgh Dessanti, TEEF Board

Religious School Moving Up Ceremony on May 21



A day of certificates, gifts, readings, singing, speeches, thank yous and buñuelos.



Shavuot Service and Confirmation on May 25

Confirmand Emma Feuer



CONTRIBUTION FORM

\$ _____ Enclosed (\$10 minimum) Fund Name _____

Contributed by _____

Send Acknowledgment to: _____

Address _____

Message _____

Use this form to send an acknowledgment for life cycle events to your friends and family and at the same time perform the mitzvah of tzedaka. Call the office with any questions.

Contributory Funds – contributions are deposited in the Temple Emeth Funds Account and drawn for use by the designated committee

- | | | |
|--|--|--|
| • Adult Education Fund | • Adult Kallah Fund | • Albert & Mildred Otten Institute for Living Arts |
| • Beautification Fund | • Paul S. Lazar Caring Community Fund | • Children's Worship Fund |
| • College Kids Fund | • Emeth Teen Community Fund | • Environment Fund |
| • Abe Golomb Religious School Scholarship Fund | • Ilana Hed Religious School Fund | • Inscribed Prayerbook Fund (\$50 minimum) |
| • Library Fund • Museum Fund | • Music Fund | • Prayerbook Fund |
| • Janice Preschel Social Action Committee Fund | • Ritual Fund • Roof Repair Fund | • Margery Rothschild Memorial Israel Fund |
| • Rabbi Louis J. Sigel Scholar-in-Residence Fund | • Straussman Memorial Youth Award Fund | • Streaming Fund |
| • Temple Emeth Fund | • Torah Repair Fund | • Joshua Trachtenberg Memorial Lecture Fund |
| • Viewpoints Fund | • Yahrzeit Fund | • Youth Committee Program Fund |

Endowed Funds – contributions are added to principal held by the Temple Emeth Endowment Foundation with fund income distributed yearly

- | | | |
|---|---|---|
| • Adult Kallah Scholarship Fund | • Grunstein-Liberman Endowed Fund | • Honigberg/ Howard Religious School Scholarship Fund |
| • Lazar Educational Enrichment Fund | • Paul S. Lazar Caring Community Endowed Fund | • Alfred and Helen Levin Youth Award Fund |
| • Rabbi Louis J. Sigel Endowment Fund | • Ned and Doris Siner Music Fund | • Temple Emeth Endowment Fund |
| • Dru and Ted Greenwood Youth Awards Fund | | |

Other Funds – contributions are used at the discretion of the recipient • Rabbi's Discretionary Fund • Cantor's Discretionary Fund

Tree of Life

Located in the Temple lobby, the Tree of Life provides an opportunity to share life's special occasions with your Temple family. Loved ones, friends, and members of the congregation are able to create permanent remembrances of their joyous events so that future generations can look upon our yestoday as having been filled with hopes, dreams, and accomplishments. Order yours now! You will enjoy visiting the Temple and finding your leaf. To order, please call the Temple office at (201) 833-1322.



Memorial Plaques

This is a wonderful way to honor your departed loved ones by purchasing a permanent plaque in our Sanctuary. It will evoke fond memories to see their names on our Memorial wall. When you purchase these plaques, one is permanently placed on the Memorial wall and the second larger one is displayed on the actual week of the yahrzeit. The cost is \$375 FOR BOTH PLAQUES. You may also buy and reserve plaques in advance. Contact the office if you would like to make a purchase.





Award Winner in Results and Customer Service

A realtor for all seasons

Wendy Wineburgh Dessanti

Thinking of selling?
Now is the time!

Broker/Sales Associate
c: 201 310-2255 (preferred)
c: 201 569-7888
e: wendydess@aol.com

Eastern Board of Realtors
2018 Realtor of the Year
award winner



Serving Bergen County for over
25 Years with Integrity,
Professionalism and Results



Amazon helps to support the Temple
when you order by using the
Amazon.com link on our website.

Use the Amazon Link on our Webpage

Support Temple Emeth by using our special
Amazon link to make purchases on Amazon.com.
Just visit www.emeth.org and click on the
Amazon.com button
at the bottom of each page,
then purchase to your heart's content!

Since 1954

Bergen County Reform Temple Memorial Association

A non-profit organization
serving Temple Emeth

Burial plots at reasonable prices

Contact:
David Fox at (201) 836-0260

*Please support our advertisers and tell them you saw their ad
in the Temple Emeth Bulletin*

Visit the Temple website at www.emeth.org



Reusable
water
bottle



Reusable
straws



Store Food
in Glass
Containers



Refillable
household
products



Bring your
own
coffee cup



Store
carrots in
water



Reuse jars



Bring your
own
shopping bag



Shop at
bulk
stores



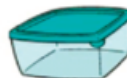
Buy loose
tea leaves



Bring your
own bag



Use washable
cloth napkins



Reuse plastic
containers



Pack your
own lunch



Use
reusable
food wraps



Store potatoes
and onions in the
basket in a dark
place

**Suggestions from the
Social Action Committee**





Emeth

The Bulletin of Temple Emeth of Teaneck, New Jersey
A Member of the Union for Reform Judaism
Serving Reform Congregations in North America