

Temple Emeth

Bulletin

Temple Emeth of Teaneck, New Jersey
An Affiliate of the Union for Reform Judaism
Serving Reform Congregations in North America

Volume 71, Number 7

www.emeth.org

Nissan/Iyar 5778 April 2018

PASSOVER GREETINGS



TEMPLE E METH

1666 Windsor Road Teaneck, New Jersey 07666

www.emeth.org

Main Office # 201 833-1322

School Office # 201 833-8466



RABBI	Steven Sirbu
CANTOR	Ellen S. Tilem
RABBI EMERITUS	Louis J. Sigel z”l
RELIGIOUS SCHOOL EDUCATOR	Dora Geld Friedman

ssirbu@emeth.org
cantoret@yahoo.com

dfriedman@emeth.org

TEMPLE ADMINISTRATOR	Rochelle Rudnick
BOOKKEEPER	Maryanne Tursi
ADMINISTRATIVE ASSISTANT	Elaine Hanan
SCHOOL ADMINISTRATOR	Barbara Shater

RRudnick@emeth.org
mtursi @emeth.org
ehanan@emeth.org
bshater@emeth.org

PRESIDENT.	Amy Abrams
FIRST VICE-PRESIDENT	Lynn Chaiken
SECOND VICE-PRESIDENT.	Felipa Bernard

amyabrams1@gmail.com
lynn_chaiken@yahoo.com
flipbern@gmail.com

SECRETARY.	Lisa Eig
ASSISTANT SECRETARY.	Jill Kantor
FINANCIAL SECRETARY.	Michael Robinson
ASSISTANT FINANCIAL OFFICER.	Michael Goldberg
TREASURER.	James Sandler

lisa_eig@yahoo.com
bjkantor@verizon.net
mdrdds@optonline.net
jpgr999@aol.com
jimsandler@gmail.com

EDITOR, PHOTOGRAPHER, LAYOUT & GRAPHIC DESIGNER:

Barbara Balkin dkrm505@yahoo.com

ASSISTANT EDITORS: Marion Wolf and Judy Fox

ADVERTISING: Audrey Seares aseares54@aol.com

<i>Bulletin Deadlines</i>			<i>Mid-Month Mailing Deadlines</i>	
<u><i>Month</i></u>	<u><i>Deadline Date</i></u>	<u><i>Publication Date</i></u>	<u><i>Deadline Date</i></u>	<u><i>Publication Date</i></u>
October	September 15	October 2	October 10	October 18
November	October 15	November 1	November 8	November 15
December	November 15	December 1	December 8	December 15
January	December 15	January 2	January 10	January 16
February	January 15	February 1	February 8	February 15
March	February 15	March 1	March 8	March 15
April	March 15	April 2	April 9	April 16
May	April 15	May 1	May 8	May 15
June	May 15	June 1	June 8	June 15

From the Editor - In order to ensure that everyone's articles are published in the Bulletin please limit them to half a page.

Remember, flyers are for the Mid-month mailing and should be sent to

Rochelle Rudnick at RRudnick@emeth.org cc: ehanan@emeth.org

Material for the Bulletin is welcome and essential for the success of the publication; however, it is necessary to honor the deadlines as listed.

For the Bulletin mailings, all material **must** be submitted by **8:00** p.m. on the date of the deadline. Please submit all material by email to Barbara Balkin at dkrm505@yahoo.com and use **Times New Roman** font, **12 pt.** in a Word document file.

For Mid-month mailings, all materials are due by **4:00 p.m.** on the date of the deadline.

The Temple Emeth Bulletin is published monthly
from September through June.

Advertising Rates for Ad Size 2" x 3 1/2"

	Member	Non-Member
1 Month	\$ 55	\$ 75
5 Months	\$250	\$350
10 Months	\$330	\$450

For additional information, call (201) 833-1322

Message From the Rabbi

The radio show “This American Life” has entertained listeners on National Public Radio for years with its nuanced storytelling. Often an hour-long episode will have three acts on a common theme. If you’ve heard it, you know it is unlike any other radio show.

About four years ago, a group of young, English-speaking Israelis sought to adapt the format to tell stories about Israel. Too many of the narratives about Israel were either gauzy platitudes (think “draining the swamps”) or political polemics (think “Apartheid state”). The real Israel is somewhere in between, and they sought to reveal it by telling the stories of real Israelis.

And so the Israel Story podcast was born. I have been a loyal listener since 2015, and while in Tel Aviv in 2016 I had the rare treat of seeing Israel Story Live. The performance brought the original audio-only format to the stage with song, dance, light, and even puppetry. The title of the show was “48 Herzl Street,” where producers knocked on the doors of the same address in a dozen Israeli cities to interview the people inside.

Since that day, I have wanted to bring Israel Story to Temple Emeth, and now we have two opportunities to see it.

On Tuesday, April 24 at 7:30 p.m., you can see a full production of Israel Story Live at the JCC on the

Palisades in Tenaflly. Prepared specially for the seventieth anniversary of the State of Israel, the title of the show is “Mixtape—The Stories Behind Israel’s Ultimate Playlist,” and the writers describe it this way: “We’ll explore seven decades of local tunes, in celebra-

tion of one big milestone of a birthday. We’ll take you behind the scenes of some of Israel’s most (and least...) iconic songs, and unpack the dramas, complexities, and social tensions involved.” Temple Emeth will have a block of seats that you can purchase for \$15 each.

Then on Friday, May 4, Israel Story is coming to Temple Emeth. Following our Family Service, two cast members will join us to share family-friendly stories with us. It won’t have the production value of the show in Tenaflly, but it will be

perfect for an intimate Shabbat of storytelling in the Social Hall. This performance is called, “An Evening with Israel Story: An Off-the-Beaten-Path Look at Life in Israel.” It is free and open to the public, so bring a friend.

I am proud to bring Israel Story to our Temple as an example of how we can use the arts to promote Jewish values and ideas. It is the perfect way for us to mark Israel’s seventieth birthday. I hope you will mark your calendar, because both performances are sure to be memorable.



Rabbi Steven Sirbu

Purim Fun on February 28th.
Megillah reading and costume parade.



From the Religious School

Hope and Shalom

The month of April, corresponding to the Hebrew months of Nissan and Iyar, is a very busy time with lots of important and memorable holidays and events. You may be reading this Bulletin in the midst of Passover. We need the full seven days of Passover to experience the seriousness of freedom and the power of song emerging from a united people. Our tradition teaches us that it was only on the *seventh day*, after the Israelites “passed over” the sea unto the dry land that they united as one to sing “the song of the sea,” affirming their faith in God. The Haggadah tells us that in every generation, “B’chol Dor Va Dor,” we are obligated to see ourselves as leaving Egypt.

In the middle of the month of Nissan on April 15th, we will gather to reflect and remember the darkest period of our history. We invite you to join Rabbi

Sirbu, Religious School staff, and students as our 7th grade students lead the Service of Remembrance at 10:00 a.m. in the Sanctuary. Temple members, parents of all students, friends, and extended family are encouraged to attend.



Dora Geld Friedman

We end the month of Iyar as we celebrate Israel’s 70th birthday on Wednesday, April 25th. Students in grades 3 – 7 will gather to celebrate Israel with singing and dancing, food and stories. As with all our programs and events, we hope to cultivate in our students and families an eternal bond to our culture and religion, a connection through space and time. We teach our students to never lose hope, *tikvah*, and to always pray for peace, *shalom*.

B’vracha,
Dora Geld Friedman

Purim Shalach Manot packing and delivery, Purim Carnival, Purimspiel, and Etz Chayim performed.

Opera Shabbaton with Elaine Bergman and Mark Shapiro.

Artist-in-Residence weekend with Jónatas Chimen Dias DaSilva-Benayon.

B’yachad speaker Helen Lippman



Harriet Bograd of Kulanu



Advocacy Day in Trenton
Reform Jewish Voice of New Jersey

Message from President Amy Abrams

Happy spring, and I hope you all had wonderful, warm, meaningful seders and delicious Passover food! I also hope you were able to attend some of the activities for our Artist-in-Residence weekend, which was absolutely fascinating both artistically and Jewishly. Who knew that for many Jews the Inquisition is not in the distant past? Thanks again to Karen Rappaport and the Viewpoints Committee for bringing this event to us.

I think you are all pretty much up to date on our successful first year of Voluntary Commitment! We have accomplished wonderful things together this year. **A thriving congregation, clergy we love, a fantastic Religious School under the direction of our marvelous Mora Dora, a building in better condition, fabulous ongoing programs interspersed with occasional fantastic special events – all of this is due to you, made possible by your contributions of the heart, your T’rumat Halev.** I thank you from the bottom of MY heart.



Amy Abrams

Now, if you attended the Town Hall Meeting on March 18, you can skip the next two paragraphs. Otherwise, please read on.

First, with thanks to the Kahn grant, we are revisiting the question of bima accessibility. You may know that we have been hampered in the past by solid concrete construction of our bima as well as by expense. It looks like we will be able to build out a platform at the base of the stairs, at the height of the second stair, with a ramp extending across the front of the right (Rabbi's) side. The first row of seats on each side would have to be removed, along with a couple of seats in the next row, but then the platform would be reachable by two steps from the front and left side, and the ramp on the right. We are working on obtaining a drawing and a quote from the architect. We would schedule the construction for this summer, but then it should only take a few weeks. Many thanks to Bill Graizel and the accessibility committee (Paul Kaufman, Jackie Guttman, Ken Scher, and Marc Chelemer) for not giving up on this one!

Second, Paul Kaufman and Dan Kirsch are doing a tremendous job of keeping up with Brit Olam and HIAS commitments. Dan's work with HIAS specifically addresses many of the same issues as the immigration branch of Brit Olam. Paul reports that after attending a live webinar with the Religious Action

Center on Brit Olam and how to get your congregation interested, he found that we are well ahead of the average in our Social Action involvement and investment. This should not be a surprise to anyone, as social action has been a hallmark of Temple Emeth since its founding, but it's good to know that we're still in the forefront of Reform congregations.

On April 14 we will jointly celebrate the Bat Mitzvah of our own Talia Sirbu. The Rabbis Sirbu have generously invited the entire congregation to share in a Kiddush lunch following the service. It's always a pleasure to get together for a family simcha! Mazel Tov to the Rabbi, Rabbi Rebecca, and Talia on this momentous occasion.

Also in April, and then in early May, we will have two opportunities to see Israel Story in Bergen County. Israel Story is an award-winning radio show and podcast about Israeli life, similar in nature to Ira Glass' "This American Life." They tell stories about a diverse Israel, celebrating the plurality of local communities and traditions. It's all about the people, not the politics. We are co-sponsoring the full show at the JCC on the Palisades on April 24, but we also have a chance for an intimate storytelling session and time to interact with a few of the cast at the Oneg after our Family Services on May 4. Their visits are the result of a successful year of intensive planning by Rabbi Sirbu. Both events should be great fun.

Planning well ahead, I hope you all have reserved June 2 and June 7 on your calendars. June 2 is our Dinner Dance honoring three of our respected and loved past presidents, Paula Dillon, Jill Kantor, and Howard Lieberman. Co-chairs Julie Weisman and Lisa Eig have put together a wonderful evening, so put on your dancing shoes and join us! You will receive a formal invitation in the mail.

June 7 is our Annual Meeting. Schmoozing and noshing will begin at 7:00, and the business part will commence in earnest at 7:30. The agenda and background information will be in the mail in May, but save the date for what we hope will be an informative, productive, and sociable occasion.

Let's hope for a lovely warm spring so we can enjoy the weather again.

Amy Abrams



Temple Emeth's Spring Fundraiser Saturday, June 2, 2018 *Journal Ads*

____ \$750 Back Cover (5x8) ____ \$500 Inside Front Cover (5x8)
 ____ \$300 Full Page (5x8) ____ \$180 Half Page (5x4)
 ____ \$100 Quarter Page/Business Card (2x5 or 5x2)
 ____ \$ 36 One-Line Listing (50 characters or less)
 ____ Exact Repeat of Previous Ad ____ Repeat Ad w/Changes
 ____ Camera Ready Ad/Tribute (please enclose)

Name or Business _____

Contact Person _____

Address _____

Telephone _____ Email _____

To pay by credit card, please call the Temple office at 201.833.1322 or make your check payable to Temple Emeth and mail with completed form to:
 Temple Emeth / 1666 Windsor Road / Teaneck, NJ 07666
 Attn: 2018 Dinner Dance. Contributions to the Journal are tax deductible.

Ad Deadline - April 23, 2018
 QUESTIONS? Contact Julie Weisman
 Julie@flavorganics.com



A fun, important element to the success of the Dinner Dance is our Silent Auction and your help is needed.

DINNER DANCE SILENT AUCTION Saturday, June 2, 2018

GIFT DONATION FORM

Item: _____

Retail Value: \$ _____

Donor Name: _____
 (As you wish to be acknowledged in the catalog)

Address: _____

Cell or Business Phone: _____

Email _____

Contact Name(s): _____

Description of the Item: _____

Temple Member/Solicitor of Donation _____

Please submit this completed form to
 Temple Emeth or email the
 information to Wendy Dessanti at
 wendydess@aol.com

Temple Emeth's 2018 Spring Dinner Dance

Dear Temple Members, Friends, and Supporters of our Honorees Paula Dillon, Jill Kantor, and Howard Lieberman,

On June 2nd, Temple Emeth will honor three people who through their years of service as our Temple President have made an enormous contribution to our community: Paula Dillon, Jill Kantor, and Howard Lieberman. Please support the fundraising component of the evening by contributing to the Silent Auction. Search your homes for hidden treasures or donate a service that you or someone you know can provide.

Examples of gifts and services that have done extremely well at previous silent auctions include:

- foreign language lessons
- golf instruction
- a week at a timeshare or vacation home
- a meal in your home
- tickets to a Broadway show, sporting event, concert
- car service to an airport
- wine/cheese/gourmet food
- a hand-knit sweater
- a massage, make-over, or day at a spa
- a computer tune-up
- a spring clean-up

Let us know if you need us to create a decorative gift basket or design a certificate for services. Your contribution, with a value attached to it, may be dropped off at Temple Emeth, or if you prefer please contact me for pick up. I look forward to this festive event which is always a fun and important fundraiser.

DON'T BE SILENT! We can only do it with your help! Please call or email me with any questions.

wendydess@aol.com

Thank you,
 Wendy Wineburgh Dessanti
 Silent Auction Chairperson



**Bus Trip to the National
Museum of American
Jewish History in
Philadelphia
Sunday April 22, 2018**

Celebrate the centennial
birthday of one of the great-
est composers and conductors
of the 20th century

Schedule:

Leave Temple Emeth at 10:15 a.m.

Lunch Dutch treat at Cosi's
(close to the museum)

Docent tour 1:30 - 2:30

Gallery and gift shop on our own 2:30 - 3:15

Return to Temple Emeth by 5:30 p.m.

Cost \$50 includes Coach bus and admission to
the museum.

Make reservations promptly and no later than April
15th - we only have one bus and when it is full, we
won't be able to take any more reservations.



“Leonard Bernstein: The Power of Music” is the first large-scale museum exhibition to illustrate Leonard Bernstein’s life, Jewish identity, and social activism, in the context of his position as an American conductor and his works as a composer. It features interactive media and sound installations along approximately 100 historic artifacts, including Bernstein’s piano, marked-up scores, conducting suit, annotated copy of Romeo and Juliet used for the development of West Side Story, personal family Judaica, composing easel, and a number of objects from his studio.

For more information contact Linda Poskanzer at
lindaposkanzer@msn.com

Fill out and send the RSVP by April 15th with a check
payable to Temple Emeth to the Temple office.

RSVP for April 22nd trip to Philadelphia

Name(s) _____

Email _____

Telephone _____

Total enclosed @\$50 _____

**PLEASE MARK YOUR CALENDAR FOR THE JUNE 2ND
TOAST OF THE TEMPLE DINNER DANCE.
INVITATIONS WILL ARRIVE IN EARLY APRIL.**

Shalach Manot 2018

Every Purim season, our Shalach Manot program is a great success, because of the participation on so many levels by you, Temple Emeth members. This year, it was SPECTACULAR, again because of YOU. We were hampered by a “short season” (Purim was early, giving us less time for data entry, food procurement, and the myriad of details this program requires) and by various unavoidable distractions affecting each of the three chairpeople. Still, by any measurement, this was our best year yet! The compliments which have rolled in attest to this.



New members played a larger role than ever in Shalach Manot this year. Quite a few new members, as well as longer-term members who had never come before, participated in assembling the packages. This is always a community-building event, with people from all walks of Temple life participating. This year, the sixty or so people who packed included our president and first vice-president (thank you, Amy and Lynn); children who were energetically getting mitzvah credit before their b’nai mitzvah; the differently-abled; senior citizens; Religious School parents; and a wide range of people who return to do this year after year. Delivery people included a similar gamut of people, and those who do this every year report to us how exciting it is to arrive on doorsteps with an unexpected present for the resident. Some tell us that, after years of driving the same route, they have a “Purim friendship” with some of their recipients.

Of course, Shalach Manot could not succeed at Temple Emeth without the enthusiasm and generosity of all of you who order Purim packages. With the numbers not fully crunched, we believe that MORE Temple members ordered MORE Shalach Manot that ever before. Thank you! And, not incidentally, after expenses and after our annual donation to Mazon, we raised well over \$17,000.

In particular we wish to mention Marc Klausner, who personifies the Hebrew expression “kol bo”—he does everything, and the program would collapse without him. Also Nickie and Doug Falk, supermarket mavens extraordinaire, who figured out the way around quantity restrictions and schlepped, schlepped, schlepped; and Larry Tobias, Temple Emeth’s own Orangeman. Weren’t they good this year!

We wish to announce that next year will be our last year actively chairing Shalach Manot. We hope to identify aspiring chairs who would shadow us in 2019. Then, ideally, those individuals would be the full chairs in 2020, with us available as consultants if needed. Chairing Shalach Manot is hard work, but it is tremendously gratifying. If you are interested, please contact one of us.

Judy Fox, David Fox, Eva Tobias

Services and S'machot

22nd of Nissan 5778
Friday, April 6

7th Day Passover Service with Yizkor at 10:30 a.m.
Shabbat Sh'mini I
Family Shabbat Service at 7:30 p.m.

Saturday, April 7

Torah Study at 9:00 a.m.
Shabbat Morning Service at 10:30 a.m.

Torah Portion - Sh'mini I: Lev. 9:1-11:47

Haftarah - II Samuel. 6:1-23

29th of Nissan 5778
Friday, April 13

Shabbat Sh'mini II
Guitar Service at 8:00 p.m.

*The Oneg is sponsored by Rabbis Rebecca and Steven Sirbu
in honor of the Bat Mitzvah of their daughter, Talia Sara*

Saturday, April 14

Torah Study, led by Rabbi Daniel Bar-Nahum
Shabbat Morning Service -
Bat Mitzvah of Talia Sirbu at 10:30 a.m.

Torah Portion - Sh'mini II: Lev. 9:1-11:47

Haftarah - II Samuel. 7:1-17

6th of Iyar 5778
Friday, April 20

Shabbat Tazaria - Metzora
Shabbat Service at 8:00 p.m.

*The Oneg is sponsored by Nicole Motz and Billy Wilson
in honor of the Bar Mitzvah of their son, Aidan Scott*

Saturday, April 21

Torah Study at 9:00 a.m.
Shabbat Morning Service at 10:30 a.m.
Bar Mitzvah of Aidan Wilson

Torah Portion - Tazria/M'tzora: Lev. 12:1-15:33

Haftarah - II Kings 7:3-20

13th of Iyar 5778
Friday, April 27

Shabbat Acharei Mot-K'doshim
Shabbat Service at 8:00 p.m.

Saturday, April 28

Torah Study at 9:00 a.m.
Shabbat Morning Service at 10:30 a.m.

Torah Portion - Acharei Mot/K'doshim: Lev. 16:1-20:27

Haftarah - Amos 9:7-15

April 2018

Sunday	Monday	Tuesday	Wednesday	Thursday	Friday	Saturday
1 16th of Nisan, Passover No Religious School	2 17th of Nisan, Passover	3 18th of Nisan, Passover	4 19th of Nisan, Passover No Religious School 7:45pm - 9:15pm Kol Emet Rehearsal	5 20th of Nisan, Passover	6 21st of Nisan, Passover Ends 10:30am - 12:30pm Seventh Day Passover Service with Yizkor 7:08pm Candle Lighting 7:30pm - 8:30pm Family Shabbat Service	7 22nd of Nisan 5778 9:00am - 10:15am Torah Study 10:30am - 12:00pm Shabbat Morning Service
8 23rd of Nisan 5778 9:00am - 11:00am Religious School Classes 9:45am Social Action Committee Meeting 11:00am - 12:00pm Torah Trope Class with Idajeane Fisher	9 24th of Nisan 5778 10:30am - 12:00pm Yiddish Class	10 25th of Nisan 5778 7:30pm - 9:30pm Movies that Matter: "A Serious Man"	11 26th of Nisan 5778 12:00pm - 1:00pm Lunch and Learn 4:00pm - 6:00pm Religious School Grades 3-7 6:00pm - 7:00pm JYG Pizza and Game Night 7:30pm - 9:30pm Yom Hashoah Commemoration at Teaneck HS	12 27th of Nisan, Yom HaShoah 7:45pm - 9:00pm Board of Trustees' Meeting	13 28th of Nisan 5778 7:16pm Candle Lighting 8:00pm - 9:00pm Guitar Service	14 29th of Nisan 5778 9:00am - 10:15am Torah Study Led by Rabbi Daniel Bar-Nahum 10:30am - 12:00pm Shabbat Morning Service - Bat Mitzvah of Talia Sirbu
15 30th of Nisan 5778 9:00am - 11:00am Religious School Classes 10:00am - 11:00am RS Yom Hashoah Commemoration and Garden Dedication 11:00am - 12:00pm Torah Trope Class with Idajeane Fisher	16 1st of Iyyar 5778 10:30am - 12:00pm Yiddish Class	17 2nd of Iyyar 5778 7:45pm - 8:45pm Adult Education Committee Meeting	18 3rd of Iyyar 5778 12:00pm - 1:00pm Lunch and Learn 4:00pm - 6:00pm Religious School Grades 3-7 6:00pm - 7:00pm Etz Chayim Pizza and Rehearsal 7:45pm - 9:15pm Kol Emet Rehearsal	19 4th of Iyyar, Yom Ha'Atzmaut 7:30pm - 9:00pm Book Group: "Anything is Possible"	20 5th of Iyyar 5778 7:23pm Candle Lighting 8:00pm - 9:00pm Shabbat Service	21 6th of Iyyar 5778 9:00am - 10:15am Torah Study 10:30am - 12:00pm Shabbat Morning Service - Bar Mitzvah of Aidan Wilson
22 7th of Iyyar 5778 9:00am - 11:00am Religious School Classes 9:45am - 11:00am K-3rd Grade Family Ed 11:00am ETC on the Road: Philadelphia (Leonard Bernstein Exhibit) 11:00am - 12:00pm Torah Trope Class with Idajeane Fisher	23 8th of Iyyar 5778 10:30am - 12:00pm Yiddish Class	24 9th of Iyyar 5778 7:30pm - 9:00pm IsraelStory Performance at JCC on the Palisades	25 10th of Iyyar 5778 12:00pm - 1:00pm Lunch and Learn 4:00pm - 6:00pm Religious School Grades 3-7 6:00pm - 7:00pm Etz Chayim Pizza and Rehearsal 7:45pm - 9:15pm Kol Emet Rehearsal	26 11th of Iyyar 5778 7:30pm - 8:30pm Viewpoints Committee Meeting 8:00pm - 9:00pm Ritual Committee Meeting	27 12th of Iyyar 5778 7:30pm Candle Lighting 8:00pm - 9:00pm Shabbat Service	28 13th of Iyyar 5778 9:00am - 10:15am Torah Study 10:30am - 12:00pm Shabbat Morning Service 7:00pm - 10:00pm Adult Ed Screening of "Lars and the Real Girl"
29 14th of Iyyar 5778 9:00am - 11:00am Religious School Classes 10:30am - 12:00pm B'yachad Breakfast 11:00am - 1:00pm ETC Mitzvah: Community Garden 11:00am - 12:00pm Torah Trope Class with Idajeane Fisher	30 15th of Iyyar 5778 10:30am - 12:00pm Yiddish Class					

For up-to-the-minute event information, additions, cancellations, or make-up classes go to www.emeth.org
 A version of the calendar is online at <http://www.emeth.org/monthly-calendar>

Good & Welfare

The congregation mourns the loss of Jennie Freilich, former teacher of our Monday Yiddish class.

Condolences to...

Rabbi Steven Sirbu on the sudden loss of his cousin, **Andrew Tilin**.

Mazel Tov to...

Joan Knauer on the marriage of her daughter, **Amanda Knauer** to **Christopher Hlavaty**.

Gwen and Marty Dubno on the Bar Mitzvah of their grandson, **Drew Eric Weiss**, and his parents, **Gayle and Steve Weiss**.

Laurel and Seth Kane on the birth of their first grandson, **Samuel Benjamin**, and his parents, **Sheryl Kane and Brendan Short**.

Get Well Wishes to...

Eva Tobias

Phillip Keusch

Meryl Hopfan

Welcome new members...

Fritz Schustermann Catpo

Nicholas Hoffman

Alexander Hoffman

ISRAEL STORY Performances

Celebrating Israel at 70



Prepare yourself for an unforgettable evening. In a dazzling combination of radio-style storytelling, music, singing and other multimedia magic, Israel's popular podcast and radio show will share the tales and music of Israel's seven decades. In a new live show written for this milestone celebration, Israel Story will take us behind the scenes of some of Israel's most (and least) iconic songs while exploring the dramas, complexities and social tensions of life in Israel. Tuesday, April 24, 7:30 pm, \$15 general admission, \$12 under age 18 Register online at jccotp.org/israel-story.

"Mixtape—The Stories Behind Israel's Ultimate Playlist," will take place at the JCC on **Tuesday, April 24** at 7:30 p.m. Temple Emeth is a co-sponsor of this event, using funds from the Leonard Kahn Foundation. Then join us at Temple Emeth on **Friday, May 4** at 8:30 p.m. following our Family Service. We will present **"An Evening with Israel Story: An Off-the-Beaten-Path Look at Life in Israel,"** featuring its co-founder and senior producer Yochai Maital and another cast member. Using audio, video, and their own voices, they will share stories that help us understand the issues that are being actively played out in Israeli society. Israel Story is a popular podcast inspired by public radio's "This American Life." The Israel Story team seeks to present life in Israel as it really is, rather than the way idealists or ideologues portray it. The presentation is appropriate for children ages 8 and up.



Join us for our Sunday morning Breakfast and Discussion on
April 29, 2018, at 10:30 a.m.

SALLY PILLAY, Director of First Friends of NJ and NY will discuss Immigration, the ICE Detention System, the Immigration "Legal" System, and the Mission of First Friends.



First Friends is a non-profit organization that aids undocumented people in the New Jersey and New York area. They provide services to those struggling with citizenship with a sense of community. They work closely with faith-based communities with the common interest in gaining rights for undocumented people. First Friends of NJ and NY upholds the inherent dignity and humanity of detained immigrants and asylum seekers. They promote compassion and hope through volunteer visitation, resettlement assistance, and advocacy. Unfortunately, there are more and more communities that need our help. Sally Pillay spoke at Temple Emeth after a Friday night service several years ago. This RSVP form must be filled out and returned with the \$6 fee per person by April 22nd to the Temple office for the breakfast. If you RSVP after that date, the charge is \$8 per person. If you do not RSVP, you are welcome to attend the discussion, but not the breakfast. Sorry, we cannot accept any verbal RSVPs.

RSVP for the April 29th B'yachad Breakfast

Name(s): _____

Number Attending: _____

Phone Number: _____ Email Address: _____

Amount Enclosed @ \$6 per person: _____

CONTRIBUTIONS

ADULT EDUCATION FUND

Gayle and Michael Goldberg wishing Laurel and Seth Kane Mazal Tov on the birth of their grandson with thanks to Janice Preschel for all of the delicious Onegs

ILANA HED RELIGIOUS SCHOOL FUND

Mora Dora in gratitude to all Temple Emeth Friends for the delicious Shalach Manot treats

Barbara Shater in honor of David and Judy Fox and Marc Klausner for their tireless work in support of the Temple Community, and to thank everyone for the abundance of Purim goodies I received!

LIBRARY FUND

Florette and Richard Koffler in memory of Florette's parents, John and Liza Rechnitz

Joan Paul wishing Phillip Keusch a speedy recovery

MUSEUM FUND

Karen Rapaport and Phylis Burman thanking Barbara Balkin for her contribution to the Artist-in-Residence Weekend

MUSIC FUND

Shirley Rosenzweig in honor of David Kohane

Elinor Buchbinder wishing Cantor Tilem a complete and easy recovery

PAUL S. LAZAR CARING COMMUNITY FUND

Barbara and Keith Kornfeld with appreciation for our Shalach Manot

Lenore Berck in memory of her husband, Martin Berck, and her mother-in-law, Florence Berck

Sonya Atkins and Matthew Turner

RABBI'S DISCRETIONARY FUND

Jane Kalfus in appreciation for the honor of being offered an Aliyah

Loretta Weinberg in honor of the Bat Mitzvah of Talia Sirbu, daughter of Rabbis Steven and Rebecca Sirbu

in honor of the Bar Mitzvah of her grandson, Jonah Benjamin Graff

Carla and Larry Silver in memory of Andrew Tilin, cousin of Rabbi Sirbu

Gayle and Michael Goldberg in blessed memory of Andrew Tilin, cousin of Rabbi Steven Sirbu
Karen Rapaport and Phylis Burman in thanks for Rabbi Sirbu's hospitality to Jonatas Chimen
Francine Einiger

RABBI LOUIS J. SIGEL SCHOLAR-IN-RESIDENCE FUND

Judy and David Fox in honor of Jacqueline Guttman

Sylvia Pollack with thanks for the beautiful Shalach Manot package she received, which was greatly appreciated

Mora Dora in honor of Eva Tobias and Judy and David Fox for adding to the joy of Purim

RITUAL COMMITTEE FUND

Shirley Rosenzweig in memory of her mother, Rose Cohen

SOCIAL ACTION FUND

Joan Knauer in honor of her daughter Amanda Knauer's marriage to Christopher Hlavaty

TEMPLE EMETH FUND

Fran LaBarbera

Maryanne Tursi, Elaine Hanan, and Rochelle Rudnick with thanks to all of our Temple Emeth friends for the delicious Purim baskets

Ann and Bob Levenstein sending Phil Keusch get well wishes and a speedy recovery

VIEWPOINTS

Mora Dora in honor of Karen Rappaport, Phylis Burman, and all those who worked to bring us this unique Artist-in-Residence program

YAHREZEIT FUND

Bunny and Nat Ritzer in memory of Rose Spielman, beloved mother of Bunny Ritzer

Flip and Larry Bernard in memory of Larry's aunt, Helen Klarfeld

Carla and Larry Silver in memory of Carla's father, Morris Nadler, uncle, Seymour Kessler, and aunt, Frances Nadler

Marian and Rubin Ferziger in memory of Marian's father, Jerome Lebowitz

Doris Pape in memory of her beloved husband, Irving Pape and her beloved son, Howard Pape



Please join in the fun and excitement of these stimulating evenings. Refreshments will be served and don't forget...bring a cush for your tush!

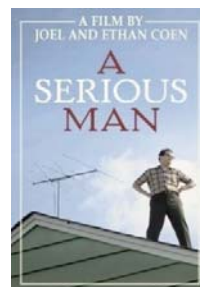
A SERIOUS MAN

Beginning with a darkly comic prologue in Yiddish, "A Serious Man" inhabits a Jewish community where the rational (physics) is rendered irrelevant by the mystical (fate). Gopnik can fill all the blackboards he wants, and it won't do him any good. Maybe because an ancestor invited a dybbuk to cross his threshold, Larry is cursed. A dybbuk is the wandering soul of a dead person. You don't want to make the mistake of inviting one into your home. You don't have to be Jewish to figure that out.

Here is the schedule of upcoming films:

A SERIOUS MAN (2010)

Tuesday, April 10 at 7:30 p.m.



BARNEY'S VERSION (2011)

Thursday, May 31 at 7:30 p.m.

TEMPLE EMETH'S FIDDLER ON THE ROOF

Tuesday, June 19 at 7:00 p.m.

Rabbi Joshua Trachtenberg Memorial Library

Monthly News Update: Fresh Looks

By Marion Wolf

ASSOCIATION OF JEWISH LIBRARIES ACCREDITATION

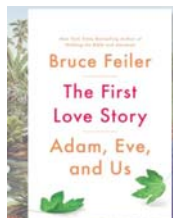


The books we add to the Rabbi Joshua Trachtenberg Library may examine history through a different lens or reinterpret ancient texts for modern times. Here are three new books with refreshing angles on the familiar.

From the prize-winning British author Philip Kerr comes The Winter Horses, a novel for young adults. This is a tale of survival during the Holocaust but with an unusual twist. Kalinka is a Jewish orphan hiding all by herself in a Ukrainian animal preserve in 1941. She befriends two Przewalski's (/shuh-VAHL-skeez/) horses. These are rare, wild, and wily animals, possibly the last of their kind. Their lives and Kalinka's are all endangered by the Nazis. The Winter Horses "captures the power of sacrifice and the endurance of the human spirit against the longest of odds."

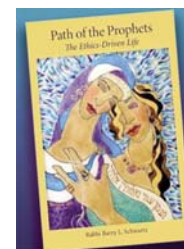


Bruce Feiler turns to Adam and Eve to better understand the human condition in The First Love Story: Adam, Eve, and Us. Feiler is The New York Times best-selling author of Walking the Bible and Abraham. In his latest book he looks at perceptions of Adam and Eve throughout history in commentary, literature, and art.



His journey takes him "from the Garden of Eden in Iraq to the Sistine Chapel in Rome, from John Milton's London to Mae West's Hollywood." Feiler takes this fundamental story, reimagines it, and shows that it can still surprise and guide us today.

Rabbi Barry L. Schwartz also uses biblical text as a springboard in Path of the Prophets: The Ethics-Driven Life. Rabbi Schwartz is director of The Jewish Publication Society and rabbi of Congregation Adas Emuno in Leonia. He has on occasion taught at Temple Emeth. He recently gave the keynote address at Sweet Tastes of Torah, where Path of the Prophets provided the structure for the evening's study. In this book Rabbi Schwartz celebrates the lives of 18 biblical heroes, expanding the definition of prophet to include some largely unknown women (Shiphrah, Tirzah, Hannah), as well as some males not usually considered prophets (Joseph, Caleb, Judah). Schwartz shares key narratives, offering context and analysis of these heroes' legacies. Can we overcome obstacles as they did? Can we integrate their values into our lives?



If you are seeking inspiration and insight, all three of these books await you in the Rabbi Joshua Trachtenberg Memorial Library.

Join Temple Emeth Adult Education on Saturday, April 28 from 7:00 to 10:00 p.m.

when they partner with The New Jersey Institute for Training in Psychoanalysis and The New Jersey Society for Clinical Social Work for a discussion following a special screening of Nancy Oliver and Craig Gillespie's comedy drama: **LARS AND THE REAL GIRL**. The discussion will be engaging but not formal. Although not a Jewish themed movie, we will analyze the movie through a Jewish lens. In addition, Wendy Winograd, clinical social worker and certified psychoanalyst will be the movie discussant. The NJ Society for Clinical Social Work will offer three free continuing education credits for the evening. And of course, refreshments will be served.

Lars and the Real Girl is a 2007 comedy drama film written by Nancy Oliver and directed by Craig Gillespie. It stars Ryan Gosling, Emily Mortimer, Paul Schneider, Kelli Garner and Patricia Clarkson. The film follows Lars (Gosling), a sweet but socially inept young man who develops a romantic yet non-sexual relationship with an anatomically correct sex doll, a "Real Doll" named Bianca.



This program is free and open to the community. We would appreciate you letting us know that you are coming. Please RSVP by sending an email to sbreznick@gmail.

CONTRIBUTION FORM

\$ _____ Enclosed (\$10 minimum) Fund Name _____

Contributed by _____

Send Acknowledgment to: _____

Address _____

Message _____

Use this form to send an acknowledgment for life cycle events to your friends and family and at the same time perform the mitzvah of tzedaka. Call the office with any questions.

Contributory Funds – contributions are deposited in the Temple Emeth Funds Account and drawn for use by the designated committee

- | | | |
|--|---------------------------------------|--|
| • Adult Education Fund | • Adult Kallah Fund | • Albert & Mildred Otten Institute for Living Arts |
| • Beautification Fund | • Paul S. Lazar Caring Community Fund | • Children's Worship Fund |
| • College Kids Fund | • Emeth Teen Community Fund | • Environment Fund |
| • Abe Golomb Religious School Scholarship Fund | • Ilana Hed Religious School Fund | • Inscribed Prayerbook Fund (\$50 minimum) |
| • Library Fund | • Museum Fund | • Music Fund |
| • Prayerbook Fund | • Ritual Fund | • Margery Rothschild Memorial Israel Fund |
| • Rabbi Louis J. Sigel Scholar-in-Residence Fund | • Social Action Fund | • Straussman Memorial Youth Award Fund |
| • Temple Emeth Fund | • Torah Repair Fund | • Joshua Trachtenberg Memorial Lecture Fund |
| • Viewpoints Fund | • Yahrzeit Fund | • Youth Committee Program Fund |

Endowed Funds – contributions are added to principal held by the Temple Emeth Endowment Foundation with fund income distributed yearly

- | | | |
|---|---|--|
| • Adult Kallah Scholarship Fund | • Grunstein-Liberman Endowed Fund | • Honigberg/Howard Religious School Scholarship Fund |
| • Lazar Educational Enrichment Fund | • Paul S. Lazar Caring Community Endowed Fund | • Alfred and Helen Levin Youth Award Fund |
| • Rabbi Louis J. Sigel Endowment Fund | • Ned and Doris Siner Music Fund | • Temple Emeth Endowment Fund |
| • Dru and Ted Greenwood Youth Awards Fund | | |

Other Funds – contributions are used at the discretion of the recipient • Rabbi's Discretionary Fund • Cantor's Discretionary Fund

Visit the Temple website at www.emeth.org

MAKE YOUR NEXT OCCASION SPECIAL AT TEMPLE EMETH!

Planning a Wedding, Bar/Bat Mitzvah, Brit Milah, Birthday Party, or Business Meeting?

Look no further...Temple Emeth can comfortably accommodate 25 to 225 guests. Your guests will enjoy the expansiveness of our elegant entry hall, social hall, and beautiful outdoor "Garden in the Round." Our youth lounge is also available for rental. We accommodate Kosher, Glatt Kosher and non-Kosher catering.



Temple Emeth
1666 Windsor Road
Teaneck, NJ 07666
www.emeth.org

Please contact:
Rochelle Rudnick
Temple Emeth Administrator
at
201-833-1322 or
rrudnick@emeth.org

Our calendar is quite busy; please be certain to
book your event soon!



**Planning an event, meeting or activity at the Temple? An
on-line version of the "green form" for room reservations is
now available at: <http://www.emeth.org/events/green.php>**

Tree of Life

Located in the Temple lobby, the Tree of Life provides an opportunity to share life's special occasions with your Temple family. Loved ones, friends and members of the congregation are able to create permanent remembrances of their joyous events so that future generations can look upon our yesterday as having been filled with hopes, dreams and accomplishments. Order yours now! You will enjoy visiting the Temple and finding your leaf. To order, please call Rochelle in the Temple office at (201) 833-1322.

Memorial Plaques

This is a wonderful way to honor your departed loved ones by purchasing a permanent plaque in our Sanctuary. It will evoke fond memories to see their names on our Memorial wall. When you purchase these plaques, one is permanently placed on the Memorial wall and the second larger one is displayed on the actual week of the yahrzeit. The cost is \$375 FOR BOTH PLAQUES. You may also buy and reserve plaques in advance. See Rochelle Rudnick in the office if you would like to make a purchase.

Summary of Minutes from the February 8, 2018 Board of Trustees Meeting

Lynn Chaiken announced the Artist-in-Residence March 9-11 – *"In Thy Tent I Dwell"* by Jonatas – sponsored by Viewpoints in collaboration with Kulanu.

Gala – Amy reported that documents for the Silent Auction were sent to each Board member. Each Board member must supply 3 items - items or services donated or Journal ads. Deadline is April 15th.

Rabbi's Report – The live stream event of Ruth Bader Ginsberg's talk went well. About 60 people attended, the technology worked well. Trying it out on Feb 9th for the opening ceremony of the Olympics during the Oneg. This is the first year of Emeth Teen Community Mitzvah. 19 teens registered from grades 8-12, made up of 5 in 11th/12th grade and 14 in 8th/9th grade. In November there was a garden close event. On Feb 8th they ran the Learners' Service. Kids will run the Purim Carnival on Feb 25th, then have lunch and URJ Mitzvah Corps talk. Rabbi worked with Marc Klausner to change the date of a Bar Mitzvah to June 23 instead of Sept. because the family is moving to Florida.

Building Maintenance – Rochelle Rudnick HVAC – price of 9 additional units came down \$7,000. Installation is the day after Presidents Day with a med/large crane in the parking lot. Will attempt to do both in one week weather permitting. Will coordinate between Lime Energy and Vector (alarm system) for connecting smoke alarms in each unit to our system. Security Grant proceeding. Cameras in the building and roof are installed; just need to be connected to server. Next is the intercom, then the doors/access codes, etc. Congregants will have to come into the office to sign for fob or card when system is live. Adults and teens (registered in a regular activity) are eligible to get cards. Risa mentioned that this is an opportunity to hand out other info.

Finance – Jim Sandler \$193K in Operating acct., \$40K from Beth Am 2 yr payment CD due, \$35K from June Moss Handler bequest – Total \$268K. Building fund \$32,581 currently. Discussion about using bequest for HVAC instead of TEEF loan. Finance Committee recommended adding \$29K to Building Fund and \$6K to RAC trip scholarships.

Motion to accept the Finance Committee recommendation for the bequest of June Moss Handler's Estate as follows: \$6,000 to RAC L'taken Seminar and \$29,000 to Building Capital Reserve Fund - **DEFEATED – 4 yes to 7 no.**

Motion to allocate the bequest of June Moss Handler's Estate as follows: \$10,000 to RAC L'taken Seminar and \$25,000 to Building Capital Reserve Fund - **PASSED – 8 yes, 4 no, 2 abstentions.**

Finance Committee has 2 more budget meetings.

Financial Secretary - Michael Robinson \$479K in commitments. \$389K paid as of 1/31/18 – 82.7% plus \$20K prepaid for next year.

President's Report – Amy Abrams Reminder that Bimah responsibilities include taking a cake to a house of mourning. Caring Community Committee Food for Friends program is starting. Town Hall meeting is Sunday, March 18 at 9:30. It will include finance and marketing updates. Brit Olam and HIAS updates to come.

Motion: All officers are authorized to sign the bank resolutions to invest \$60,000 in 2 CD's – 1- \$20,000 13 month CD and 1-\$40,000 23 month CD at Lakeland Bank. **Approved – 12 yes.**

Respectfully submitted,
Jill Kantor
Asst. Board Secretary

Social Action in Action

Family Promise

We will be hosting families through the Family Promise program from April 27 through May 7th. Join us as we help families who need housing. For more information about the program, or to sign up, contact Elaine Bergman at 201-927-5147 or ejb1734@msn.com

Mitzvot of the Month

For our Family Promise families we will need: SMALL CEREAL BOXES, GRAPE JELLY, SMALL WATER BOTTLES, COFFEE, TEA BAGS, GALLON WATER BOTTLES, MAC AND CHEESE, LARGE JUICE BOTTLES, HEALTHY SNACK PACKS, INDIVIDUAL FRUIT COCKTAIL CONTAINERS, INDIVIDUAL APPLE SAUCE CONTAINERS. Many thanks!

Northern New Jersey Sanctuary Coalition Two upcoming events

Temple Emeth has been a member of Northern Jersey Sanctuary Coalition for over 10 years.

The Sanctuary Coalition has found a growing need for housing and assistance. Many people who have applied for political asylum have been released from federal detention and now have nowhere to go.

Learn more about this important organization at a **BYACHAD BREAKFAST on SUNDAY APRIL 27.** The speaker will be **Sally Pillay** from **First Friends of New York and New Jersey.**

The Coalition's annual Benefit Dinner will be held on Sunday, April 15 at 5:30 p.m. at St. Marks Church in Teaneck. For more information, see flyers in the lobby or contact Eva Sandrof at evasan1@msn.com or 201-403-1631.

DEMONSTRATION regarding hazardous materials on SUNDAY, APRIL 8 at 2:30 p.m. This demonstration will say NO to the continued presence in our area of trains containing hazardous materials.

The next Social Action committee meeting is on
April 8 at 9:45 a.m.

New food program: Food for Friends

Cooking for your family? Make a little extra, and help The Paul S. Lazar Caring Committee launch a new program called "Food for Friends," which will provide meals for Temple members who are ill, in mourning, or not able to prepare or get out to buy nutritious meals. Volunteers will be asked to provide a meal which can be homemade or bought. Please contact Karen Wertheimer or the Temple office at 201.833.1322, to make a request (give a few days' notice, please) or to volunteer to help with this new service. Contact Karen at kwertheimer@verizon.net



Award Winner in Results and Customer Service

A realtor for all seasons

Wendy Wineburgh Dessanti

Top Office Producer 2016-2017

Top Listing Agent 2014-2017

Top Zillow Rating for Customer Satisfaction

Broker/Sales Associate

c: 201-310-2255 (preferred)

o: 201 569-7888

e: wendydess@aol.com

TENAFLY



Serving Bergen County for over
25 Years with Integrity,
Professionalism and Results



201-928-0100

201-928-0406 (FAX)

e-mail: senweinstein@njleg.org

LORETTA WEINBERG

NEW JERSEY STATE SENATE

MAJORITY LEADER

545 CEDAR LANE
TEANECK, NJ 07666

SENATOR, 37TH DISTRICT
BERGEN COUNTY

*We continue to be Jewish family managed,
knowing that caring people provide caring service.*

GUTTERMAN AND MUSICANT JEWISH FUNERAL DIRECTORS

800-522-0588

WIEN & WIEN, INC. MEMORIAL CHAPELS

800-322-0533

402 PARK STREET, HACKENSACK, NJ 07601

ALAN L. MUSICANT, Mgr., N.J. Lic. No. 2890 • MARTIN D. KASDAN, N.J. Lic. No. 4482

Advance planning conferences conveniently arranged at our chapel or in your own home

Dignity GuttermanMusicantWien.com

amazon.com

Use the Amazon Link on our Webpage

Support Temple Emeth by using our special
Amazon link to make purchases on Amazon.com.
Just visit www.emeth.org and click on the
Amazon.com button
at the bottom of each page,
then purchase to your heart's content!

Since 1954

Bergen County Reform Temple Memorial Association

A non-profit organization
serving Temple Emeth

Burial plots at reasonable prices

Contact:

David Fox at (201) 836-0260

Eric Loeb at (201) 692-0211

*Please support our advertisers and tell them you saw their ad
in the Temple Emeth Bulletin*

ELLIOT BROKER/SALES ASSOCIATE
201-446-0839
elliottwsteinberg@gmail.com

REAL ESTATE PROS
ELLIOT AND EMILY
STEINBERG. FRIENDLY,
TRUSTWORTHY,
KNOWLEDGEABLE,
PERSONALIZED
SERVICE AT ITS FINEST.

INVITE US IN. WE'LL
BRING RESULTS!



EMILY REALTOR/SALES ASSOCIATE
201-446-1034
emily.emilysteinberg@gmail.com

OF ALL THE DECISIONS
YOU WILL FACE WHEN
BUYING OR SELLING,
THERE IS NONE
MORE IMPORTANT
THAN WHOM YOU
CHOOSE TO
REPRESENT YOU.

SERVING THE
BERGEN COUNTY,
TEANECK AREA.





Temple Emeth
1666 Windsor Road
Teaneck, New Jersey 07666
www.emeth.org

Non-Profit Organization
U.S. POSTAGE
PAID
Permit No. 718
South Hackensack, N.J.

ADDRESS SERVICE
REQUESTED

Emeth

The Bulletin of Temple Emeth of Teaneck, New Jersey
A Member of the Union for Reform Judaism:
Serving Reform Congregations in North America

Save The Date:
Saturday June 2, 2018 7-11 p.m.



Join us for a celebratory evening of dinner and dancing
to honor three of our esteemed past presidents

Paula Dillon
Jill Kantor
Howard Lieberman