

✧ Congregation Agudath Israel Cemetery Association ✧

c/o Arthur M. Franklin, President
7 Liddy Place
West Caldwell, NJ 07006

How To Find Menorah Section of East Ridgelawn Cemetery

October 1, 2014

Located on Passaic Avenue, Clifton

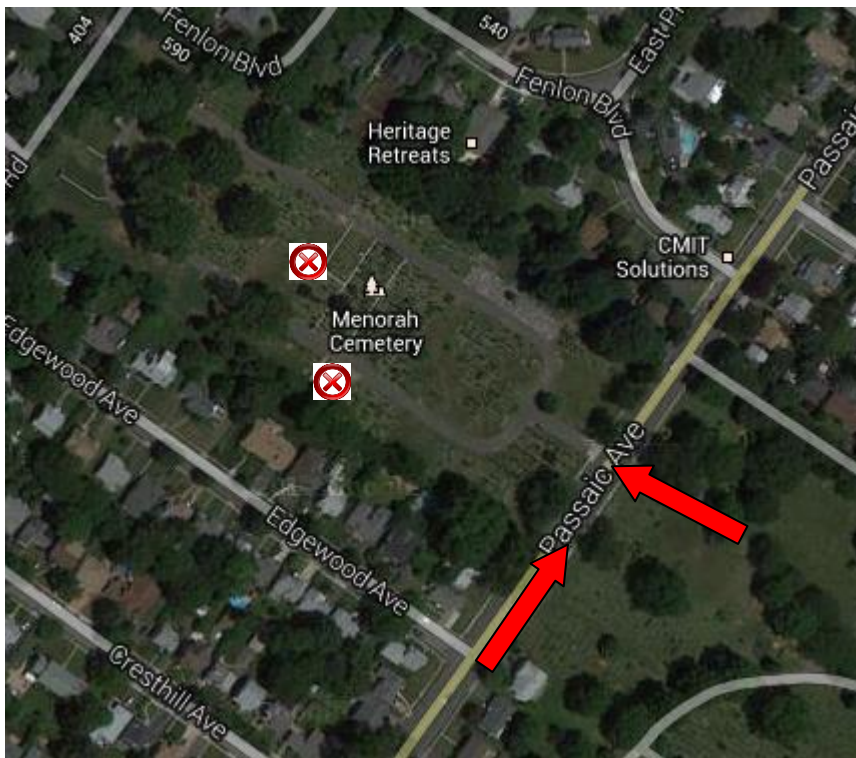
From Route 3, take Passaic Avenue Exit towards Clifton/Passaic

After 6 blocks, the Menorah Section will be on the left, opposite the main East Ridgelawn Cemetery.

[if using GPS, Menorah Section is just past a house at 614 Passaic Ave, Clifton NJ]

There are stone pillars marking each of our sections. After entering the Cemetery, traffic is directed up the right side.

- Our Sections A & B are three quarters up the hill, on the left.
- Continuing up and around our Sections C & D are one quarter of the way down on the left.
The rear of Sections A & B adjoin Sections C&D behind them.
- Then, continuing a short distance down the hill towards the entrance is our Section F on the right. There are several steps from the road leading up to our Section F. Note that this section has low footstones only.



Serving Congregation Agudath Israel for Nine Decades.