

# NEW SYNAGOGUE COMPLEX SUBURBAN ORTHODOX CONGREGATION TORAS CHAIM

7504 SEVEN MILE LANE PIKESVILLE, MARYLAND 21208

## SCHEMATIC DESIGN



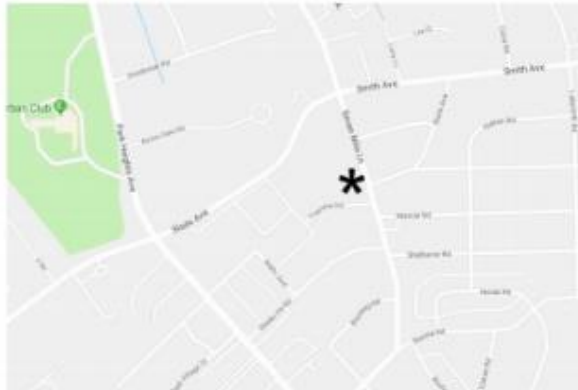
ARCHITECT:  
**KPN ARCHITECTS**  
1800 Washington Blvd., Suite 414  
Baltimore, MD 21230  
443.682.7758

DESIGN ARCHITECT:  
**Vertical Architecture Enterprises**  
309 Edgevale Road  
Baltimore, MD 21210  
443.571.4435

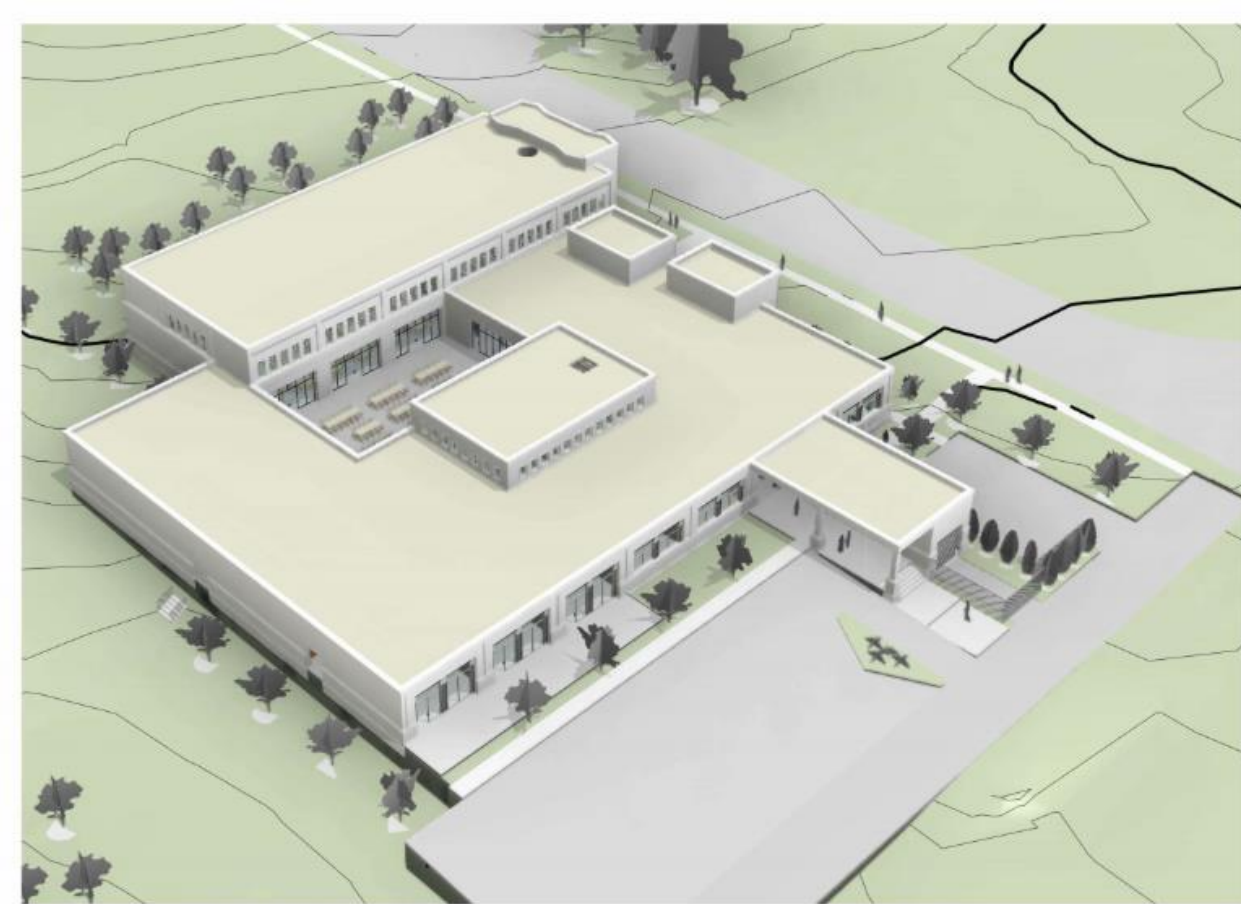
STRUCTURAL ENGINEER:  
**Carroll Engineering**  
215 Schilling Circle, Suite 102  
Hunt Valley, MD 21031  
410.785.7423

MEP, FIRE PROTECTION, & ENERGY ENGINEER:  
**SRBR Engineering**  
757 Frederick Road, Suite 300  
Catonsville, MD 21228  
410.869.7282

CIVIL, SITE, UTILITY ENGINEER:  
**Matis Warfield**  
954 Ridgebrook Road, Suite 120  
Sparks, MD 21152  
410.683.7004



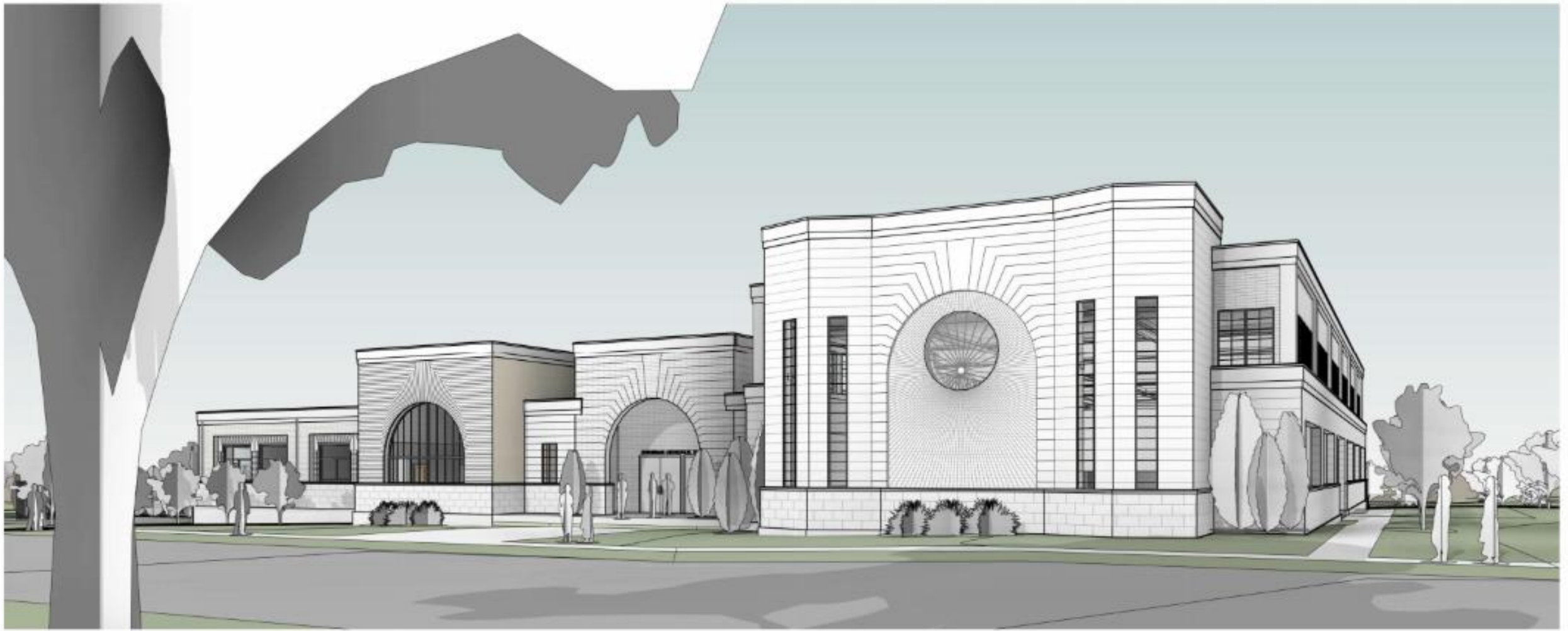
LOCATION MAP



① Bird's Eye View from Southwest



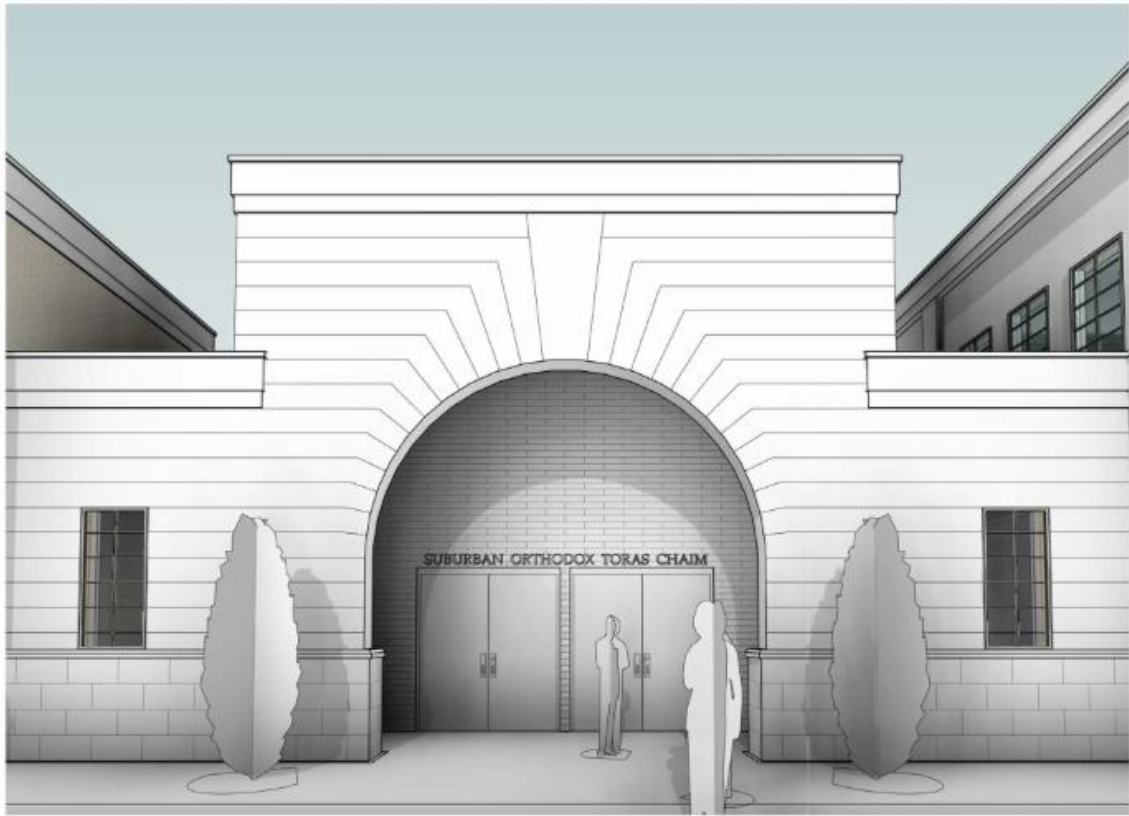
② Bird's Eye View from Northeast



① Exterior View from Northeast



② Exterior View from Southeast



① Exterior Front Entrance



② Lobby View to Courtyard



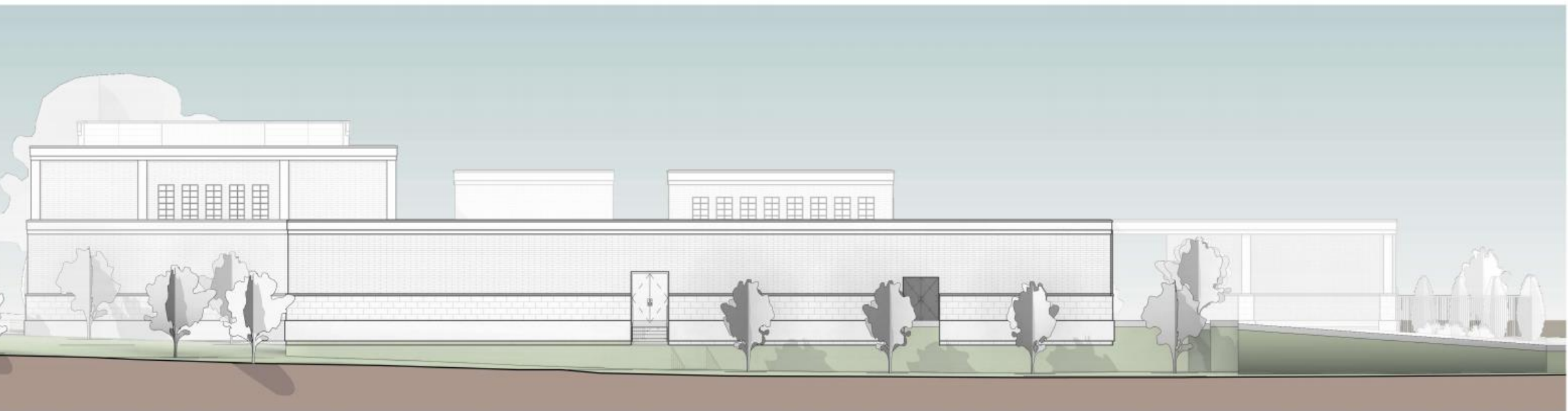
① East Elevation  
1/16" = 1'-0"



② North Elevation  
1/16" = 1'-0"



① South Elevation  
1/16" = 1'-0"



② West Elevation  
1/16" = 1'-0"