

ASHAR

ROADMAP TO
REOPENING

FALL 2020



TABLE OF CONTENTS

1	MENAH EL'S MESSAGE	1
2	BEFORE COMING TO SCHOOL	1
3	DAILY DISINFECTION PROCEDURES	2
4	PPE PROTOCOL	2
5	HEALTH SCREENING	3
6	DISTANCING & COHORTS	3
7	MODIFIED SCHOOL OPERATIONS	4
8	CONTAINMENT	4
9	SCHOOL CLOSING	5
10	EMOTIONALLY STRONG STUDENTS!	5

Adolph Schreiber Hebrew Academy of Rockland
360 New Hempstead Road
New City, NY 10956
Tel: 845-357-1515
Fax: 845-357-1516
www.ashar.org



MENACHEL'S MESSAGE

Menachem Av, 5780
August, 2020

Dear Parents,

These past months have presented unfathomed challenges for some of our ASHAR family, and struggles of varying degrees for all. As we continue to individually and collectively heal, it is imperative to prioritize health and safety, while simultaneously allowing our children to resume a positive in-person school experience.

The protocol that follows has been carefully coordinated with medical experts and approved by the New York State Department of Health, as well as the Department of Education. It represents what we believe is a safe and reasonable approach to reopening ASHAR.

Thank you for your support and cooperation these past months. Working together, we will, *b'ezras Hashem*, ensure good health and abundant *nachas* from our very resilient children, as we continue to make adjustments as needed.

As always, please feel free to reach out with any questions or concerns.

Looking forward to a great year,

Rabbi Ari Jacobson

BEFORE COMING TO SCHOOL...

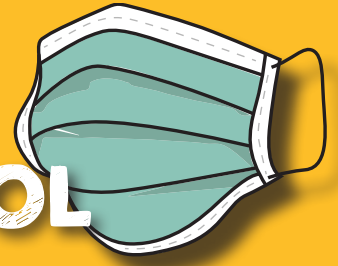
- **Mandatory COVID-19 Testing:** Please have your child tested for COVID-19 and email results to yfried@ashar.org. Testing may be done beginning Monday, August 17th and the results must be submitted before Monday, August 31st. **Your children will not be admitted without documentation of a negative test.**
- Please fill out the mandatory daily health appraisal form via ParentLocker. Students and staff will not be allowed to enter school if this form is not submitted.
- If your child is not feeling well, **DO NOT SEND HIM/HER TO SCHOOL!**
- Children returning from travel hot spots must quarantine for two weeks prior to returning to school, as per New York State guidelines.
- Continue to reinforce proper hygiene, hand-washing, and PPE use.



DAILY DISINFECTION PROCEDURES

- Intensive overnight cleaning and sterilizing by Sterile Med cleaning service. Ongoing hygienic cleaning and vigilance during the school day, with special attention to bathrooms.
- Upgraded HVAC filters
- Hand sanitizing Purell stations in classrooms and offices
- Additional Chromebooks have been purchased to significantly reduce the need for sharing. Students and teachers will sanitize with alcohol wipes prior to keyboard use.
- Teachers will be provided with individual sets of whiteboard markers and other common items, in order to reduce the need for sharing.
- Early Childhood teachers have received detailed instructions regarding sanitizing toys and other items used at learning centers between cohort uses.
- Appropriate signage reminding students and staff of distancing and mask requirements, frequent hand sanitizing, etc. will be posted throughout the facility.

PPE PROTOCOL



- Sneeze guards will be installed on every student, teacher and administrator desk. Plastic or glass guards have been installed in offices.
- Face masks are required for all faculty and staff.
- Face masks are required for students when not at sneeze-guard protected desks or otherwise distanced, such as in hallways and on buses.

HEALTH SCREENING



- Daily health appraisal, submitted online by each staff member and student
- Mandatory staff COVID-19 testing, by local testing facility.
- Daily temperature checks for staff and students prior to entering the building each day
- No staff member or student with fever or other symptoms may attend school, as per New York State guidelines.
- Mandatory quarantining upon return from restricted states or countries, as per New York State guidelines.
- Vulnerable populations will be carefully monitored, and generally not allowed to attend school without prior medical clearance.



DISTANCING & COHORTS

- Outdoor activities and instruction will be encouraged, to the degree feasible. Additional tables and chairs have been purchased for this purpose.
- Children traveling by school bus are required to wear masks on the bus, as per local school district regulations.
- Students will remain in their homerooms to the extent feasible, and teachers will move from class to class. Specialties, such as art and music, will also take place in the individual homeroom classrooms.
- Gym classes and recess will be held outdoors to the extent feasible.
- Cone markers will designate play areas for specific classes and cohorts. Classes and cohorts will not be allowed to mix.
- Hallway traffic will be limited, inasmuch as arrivals and dismissals are staggered, and students will generally not be transitioning between classrooms. Staff members will direct students to homerooms upon arrival; no students waiting in hallways or other common areas. Hallways will be marked for distancing and one-way traffic, whenever possible.

MODIFIED SCHOOL OPERATIONS

- Reconfigured indoor and outdoor individual teacher stations for preparation and breaks. No regular teacher rooms.
- Co-Curricular and Extra-Curricular Activities: No assemblies, school trips, sports teams or after-school programs until further notice.
- School Lunch: Closed, individually boxed lunches will be provided by a New York State compliant vendor.
- Water fountains have been disabled and replaced by bottle refilling stations
- Visitors, including parents, will generally not be allowed into the building. All drop-off and pick-up will be done outside. Essential vendors will undergo temperature screening prior to entrance, and will be provided with face masks as needed.
- School-Parent Communication: Please continue to check your email, ParentLocker updates, and the school website for continually updated information, including details of Zoom Back-to-School Nights and Student Orientations.

CONTAINMENT

- Any student or staff member not feeling well during the school day will be instructed to immediately report to the school nurse for guidance.
- In case of any concern, the staff member will leave the facility and only return after medical clearance from a physician.
- Parents of any ill student will be contacted by the nurse and be requested to pick up their child as soon as possible, generally within 30 minutes. The student will wait in a designated isolation room, located next door to the nurse's office, until a parent or guardian arrives. The student will not be allowed to return to school without medical clearance from a physician who has examined the student.
- In case of concern, the nurse will immediately contact a school administrator, who will receive further guidance from the school Medical Consultant, Dr. Benjamin Friedman, MD.
- Affected areas will be immediately cleaned and disinfected.
- **Contact Tracing:** Potentially exposed individuals will be identified, and in warranted cases, reported and quarantined in accordance with New York State Contact Tracing Program protocol.
- **Communication:** Directly affected individuals will be individually contacted by a school administrator or nurse, and a general communication will be shared with all parents, staff and vendors, as warranted and appropriate.

SCHOOL CLOSING

- In-person education may be interrupted in the event of a COVID-19 positive case or cases, as per the guidance of our Medical Consultant and New York State Department of Health.
- In the event that a class or cohort is interrupted, based on an identifiable COVID-19 positive case whose contact was generally limited to a specific group, school will continue in a hybrid form: unaffected classes will continue live, in-person education, while those physically excluded will participate via Zoom. Depending on circumstances, teachers may teach on site, or remotely.
- In the event of a school wide interruption of in-person instruction, a full school day will be conducted via Zoom. We successfully maintained a full 9:00 AM-4:30 PM virtual school day this past year, featuring Zoom, Google Classroom platforms and a fully operational school website with comprehensive schedules and real-time communication. We are able to quickly transition from in-person, “real” school, to virtual school, and will do so again as often as needed. Towards this end, server bandwidth was significantly increased, additional cameras, laptops and other equipment purchased, and teacher professional development provided. We obviously look forward to a year of uninterrupted live education, but are fully prepared for hybrid or fully remote instruction.



EMOTIONALLY STRONG STUDENTS!

- Children are resilient, and *b'ezras Hashem* will quickly acclimate to the changes in their school environment.
- Students, parents, and staff will have expanded access to school guidance and on-site ACHIEVE psychological resources, as well as Chai Lifeline counseling and crisis management services, as necessary.
- As always, please feel free to reach out to administrators with any questions or concerns. We are in this together!