



ECHOD

25 SHEVAT 5775 • FEBRUARY 13-14, 2015 • SHABBAT MEVARCHIM
PARSHAT MISHPATIM/SHEKALIM • CANDLE LIGHTING: 5:10PM

Shaul Robinson
Rabbi
Sherwood Goffin
Senior Cantor
Yanky Lemmer
Cantor
Lloyd Epstein
President
Ben Keil
Executive Director

SHABBAT SCHEDULE

Friday Evening

- 5:10pm: Candle Lighting
- 5:15pm: Mincha/Kabbalat Shabbat in the Nathaniel Richman Cohen Sanctuary led by **Chazzan Yanky Lemmer**

Shabbat Morning

- 7:45am: Hashkama Minyan in the Belfer Beit Midrash followed by Kiddush and shiur with **Rabbi Moshe Sokolow**
- 9:00am: Services in the Nathaniel Richman Cohen Sanctuary led by **Chazzan Yanky Lemmer**
- 9:15am: Beginners Service led by **Dr. Leonard Davidman** in room LL201 (Lower Level)
- 9:30am: Latest Shema
- 9:30am: Youth Breakfast
- 9:45am: Rabbi Herschel Cohen Memorial Minyan in the Belfer Beit Midrash
- 11:15am: **10th Annual Jonathan H. Spanbock Memorial Lecture** in the Nathaniel Richman Cohen Main Sanctuary. Delivered by **Rabbi Saul Berman**: *The Treatment of Immigrants in Biblical Narrative and Law.*



Shabbat Afternoon

- 3:00pm: Herb Weiss Bikur Cholim Society meets in shul lobby. New volunteers are urgently needed.
- 3:45pm: Beginners Mishna Chavura with **Moshe Sheinwexler** in the Belfer Beit Midrash
- 4:15pm: Louis Lazar Memorial Shiur with **Tuvy Miller**: *"Who Were the Original Jewish Leaders?- A Closer Look at the End of Parshat Mishpatim"*
- 4:15pm: Bible Class in room 211 with **Shlomo Gewirtz**
- 5:00pm: Mincha followed by Seudah Shlishit
- 6:12pm: Ma'ariv/Shabbat Ends

Thank you to our volunteer greeters, security guards, and ushers this Shabbat.

WEEKLY PRAYER SCHEDULE

For the Week of Sunday, Feb 15th - Friday, Feb 20th

Sun—Thurs

Mincha/Ma'ariv: 5:20pm

Tue—Thurs

Late Ma'ariv: 8:15pm

<u>Sunday</u>	<u>Mon</u> (President's Day)	<u>Tues & Wed</u>	<u>Thurs & Fri</u>
Shacharit: 7:10am	Shacharit: 7:00am	Daf Yomi: 6:20am	(R.C. Adar)
Daf Yomi: 7:45am	Daf Yomi: 7:45am	Shacharit: 7:10am	Daf Yomi: 6:15am
Shacharit: 8:30am	Shacharit: 8:30am	Shacharit: 7:50am	Shacharit: 7:00am
			Shacharit: 7:40am

WELCOME NEW MEMBERS

Mr. Stanley Grossman
Dr. Jonathan Mohrer

MAZAL TOV TO OUR MEMBERS

- Mazal Tov to **Limor and Haviv Zahav** on the birth of a baby boy.

THANK YOU TO OUR SPONSORS

Hashkama Kiddush

Sponsored by **Sabrina and Ariel Ovdia** in honor of **Shimon & Siera Ovdia's** last shabbat in Manhattan.

Main Kiddush

Sponsored by **Marion and Maurice Spanbock** in memory of their son, **Jonathan Spanbock, z"l**, and in honor of the Jonathan Spanbock Memorial Lecture in Jewish Ethics.

Beginners Kiddush

Sponsored in honor of **Rabbi Ephraim Buchwald's** contribution to Jewish Outreach.

Seudah Sh'lishit

Sponsored by **James and Gale Kaufman** in commemoration of the yahrtzeit of James' father, **Moishe Kaufman, z"l**, and by **Edmond Haddad** in commemoration of the yahrtzeit of his mother, **Yvonne Yedid Haddad, a"h**.

MOLAD

The Molad for Rosh Chodesh Adar will be on Wednesday night at 59 minutes and 2 chalokim after 11 PM. Rosh Chodesh Adar will be on Thursday and Friday.

SECURITY ANNOUNCEMENT

New LSS Security Training:

Part 1: Sun Feb 22 Part 2: Sun March 1, 7 pm to 10 pm

The next shul security class for LSS members given by CSS will be Sun. Feb 22nd and Sun March 1, 2015, from 7 to 10 pm

You must attend both 3-hour classes. Graduates of this class will be classified as LSVs, Local Synagogue Volunteers, and will be qualified to take security shifts and other responsibilities. You will never work alone but will always partner with a Team Leader. Location of the class: Upper West Side.

Please contact the LSS head of security Ian Silver at security@lss.org. Provide your name, phone number and email address. Now is the time to act.

FEATURED UPCOMING EVENTS

Book Club Meeting: *A Guide for the Perplexed* by Dara Horn • Motza'ei Shabbat, February 14th • 8pm

At the home of Karen and Roy Simon. Jack Wolkenfeld will be leading the discussion.



Film Screening: *Above and Beyond* & Talk by Rav Benny Lau • Motza'ei Shabbat, February 28th • 7:30pm

Above and Beyond is the story of "Machal," a group of World War II pilots, mostly American, who volunteered to fight for Israel in its 1948 War of Independence and helped found the Israeli Air Force. Following the film, at 9:15 pm we have the privilege of hearing from Rabbi Dr. Benjamin (Benny) Lau, *Senior lecturer at Beit Morasha of Jerusalem's Beit Midrash for Women and Advanced Halacha Program, a founder of the Beit Midrash for Social Justice, and head of the Israel Democracy Institute's Human Rights and Judaism in Action project.* \$10 in advance at lss.org/film



Polemics and Purim: *The Visual Imagery of Purim in the Jewish/Christian Debate* • Sunday, March 1st • 10:30am

Presented by Dr. Dana Fishkin, Assistant Professor of History, Touro's Lander Center for Women and Graduate School for Jewish Studies. This lecture illuminates the dynamic of Jewish-Christian interactions through analysis of Purim in Medieval Manuscripts.



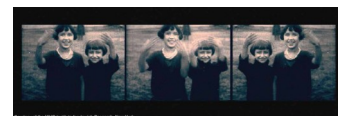
Book Launch: *Judaism and Other Religions: Models of Understanding* by Alan Brill • Sunday, March 8th • 7pm

Rabbi Dr Alan Brill will be in conversation with Rabbi Dr Ben Elton Chaired by Rabbi Ysoscher Katz of Yeshivat Chovevei Torah. Alan Brill is the Cooperman/Ross Endowed Chair for Jewish-Christian Studies at Seton Hall University, where he teaches Jewish studies in the graduate program. Dr. Brill received his BA, MA, and Ordination from Yeshiva University and his PhD from the Department of Theology at Fordham University. Currently, is engaged in long term research on a book on the Varieties of Modern Orthodoxy.



Museum Tour: *Letters to Afar: By Péter Forgács, Films of Polish Jewish Life on the Brink* Sunday, March 15 2015 • 10:30 AM • Museum of the City of NY, 1220 Fifth Avenue at 103rd Street

Last week of this highly acclaimed exhibit, based on home movies made by New York City's Jewish immigrants who traveled back to visit Poland during the 1920s and 30s. The films document poignant family reunions and everyday life in small towns in the years before the Second World War. These "letters" bring to life a lost world in startling and moving detail. \$20



ISRAEL CORNER • פינת ישראל

Note: This article contains links and is best viewed online. If you are reading this in hard copy, please consider reading the electronic version of the Echod after Shabbat.

ADVOCATE FOR ISRAEL

In the early 1940's, even as the news of the horror of the concentration camps was coming out of Europe, many Jews were reluctant to speak out lest they be accused of a dual loyalty. Let's not be like those Jews, let our voices be heard in the corridors of Congress while there is still time to act. Here are two ways that we can help:

Annual AIPAC Conference: March 1 - 3

To register, please visit www.policyconference.org. When you register, please do so under LSS in order to be invited to the LSS luncheon during the conference. Should you have questions, please see Ann Crane.

Annual NORPAC Conference: May 13

During this one day event attendees will meet virtually the entire U.S. Congress and will make sure that the issues of importance to our community – such as the commitment to a strong and secure Israel -- get the attention and support they deserve. To register, please visit www.norpac.net. While the date of the conference may seem far away, note that there is a discount for those who register before the end of February. Buses will be leaving from in front of LSS in the morning and returning in the evening.

JM in the AM in J'lem

Keshet, the organization that ran the amazing LSS solidarity mission to Southern Israel last year, has partnered with popular Radio Show Host, Nachum Segal, to offer an unparalleled look into the State of Israel. Explore the religious and political complexities of Israel, enjoy Nachum's insightful commentary and participate in his live daily broadcast. This 5-star luxurious trip runs from July 27 to August 5. For details about the itinerary please visit:

<http://www.innovationation.co.il/trip/nachum-segal-israel-tour-ancient-modern/>

Youth Announcements

Youth Groups Schedule

Pre-k: Room 206 at 10:00am

k-1: Room 207 at 10:00am

2-4 grade girls: Room 208- 10 am

2-4 grade boys: Room 210- 10 am

5-8th boys and girls: Room 211—10:15am

Youth Breakfast @ 9:30am in room 206

Math Circle is in session-

Monday nights from 6-8pm

in room 208. Open to children in 4th grade and up.

Contact hjstein@gmail.com

Purim Carnival • Sunday, March 1 • 1-4 pm • LSS Ballroom

Join us for Purim fun and games for all ages from toddlers through tweens.

Wear your costume, bring a friend and get excited!

There will be carnival games, prizes, and even a dog show!

Special Performances:

Bubble Show @ 1:30 pm • Acrobatic Dog Show @ 3 pm

Tickets:

Early Bird: \$20/person

At The Door: \$25/person

Age 1 And Under: \$10/person

Sponsorship: \$100

Stay tuned for more information.

Special Announcements

Board Meeting • Sunday, February 22nd • 7:30pm

LSS is delighted to be involved in a **Sefer Torah dedication project**, with giving opportunities at the Parsha and Aliyah level. Dedications will be reserved on a first come, first served basis. Full Parshas can be dedicated for \$2400 and Aliyas can be dedicated for \$360.

To make a dedication, or to see images from the Sofer's progress in Israel, visit lss.org/torah

Purim Mishloach Manot Sale 2015

Take part in this year's Mishloach Manot program. Send packages to other LSS members at \$8/household. The deadline for registration is Friday, February 27th. Open to LSS members only.

Sign up at lss.org/mishloachmanot (must be logged-in to view)

Weekly Learning Opportunities

SUNDAY

Minchat Chinuch with Rabbi Ben Elton • 9:15am
(Not Meeting This Week)

MONDAY

Kadish Class with Rabbi Shaul Robinson • 8:30pm
(Not Meeting This Week)

TUESDAY

Parsha Class with Rabbi Shaul Robinson • 10:30am
Intro to Bible w/ Rabbi Ephraim Buchwald • 6:30-8pm
Tuesday Beit Midrash Night • 7:30-9:15pm

- Tanach Survey: The Books of Samuel and Kings (7pm)
Facilitated by Marcy Zwecker and Robin Mitchnick
(meeting in a private home – call office for details)
- Politics and Kingship: The Book of Samuel
Facilitated by Ron Platzer

WEDNESDAY

Wednesday Beit Midrash Night • 8:15-9:15pm

- The Subversive Religious Poetry of Yehuda Amichai
Facilitated by Sara Brzowsky

Talmudic Logic w/ Rabbi Dennis Weiss • 7:30pm

An in-depth look at a single Talmudic subject matter, starting from the relevant Biblical texts and delving into the logic system of the Gemara. This year's topic will be **"Misappropriation & Trespass"**

Nach B'lyun: Sefer Shmuel Beginning w/ Chapter 11
With Rabbi Hayyim Angel

The Spring Semester of the popular Series began on Wednesday, January 28th. \$20 per class.

Sign up at lss.org/RabbiAngel

THURSDAY

Parsha Class with Rabbi Shaul Robinson • 7:00pm

Beginners Announcements

- You may still register for Rabbi Buchwald's **Introduction to Bible: The 10 Commandments (Began Tuesday, January 27th, 6:30-8:00pm)**. This course, which meets for another **6 weeks** provides an in-depth study and analysis of the Decalogue (the Ten Commandments) and other basic biblical texts. The religious significance of the Bible, scriptural exegesis and the relationship of the written and oral law will be discussed and analyzed. To register, please call **212-874-6100** or register online at www.lss.org/beginners. Cost: \$90, Free to LSS Members. **No one will be turned away for lack of funds.**
- The next session of the **Hebrew Reading Crash Course Level II** will meet on **Monday, February 16th at 6:30pm**, and continue for **3 more weeks**. The classes meet for **1 1/2 hours**, and are free and open to all. Register at www.lss.org/beginners.
- **Jewish Living Workshop** led by Dassa and Bill Greenbaum returns to LSS on **Monday, February 23rd, 2015 7:30-8:30pm**. The Jewish Living Workshop, a 10 sessions series, is a "hands-on" experience. We learn by doing. The workshop is free, a few sessions will require a modest fee for materials; register at JLworkshop@yahoo.com or www.lss.org. **The first topic: Shabbat – The Friday Night Experience.**
- **Save the date!** The annual **Beginners Purim Bash, Wednesday March 4th, 6:00 PM** - Maariv and Megillah reading, **7:20 PM** - Purim Bash, featuring renowned musical artist and performer Psachya Septimus. Cost includes food, music and the Purim Shpiel: \$20 in advance; \$25 at the door. **Register at www.lss.org/beginners.**
- **Save the date!** The next **Beginners Luncheon** will be **Shabbat, March 7th, 2015**. The cost is still only \$20. Please make your reservations by **Thursday, March 5th**. You can register online at www.lss.org/beginners or call **212-874-6100**
- **Save the date!** **Monday, March 9th, 2015, 8:15-9:30PM**, there will be a **Beginners Schmooze**. No charge, complimentary refreshments. **Please call 212-874-6100 to confirm.**



D'var Echod B'lev Echod

Insights into the weekly Parsha and other matters at the heart of the LSS community

25 SHEVAT 5775 • FEBRUARY 13-14, 2015

PARSHAT MISHPATIM/SHEKALIM

By: Jerry Tov Greenberg

SINGLE HALF-SHEKEL, SEEKING SAME

Shabbat Shekalim occurs approximately one month before Nisan, either on or just before Rosh Chodesh Adar. In Temple times each citizen was required to contribute a half-shekel to help with its maintenance. Basically it was one of the first Pay-Your-Dues campaigns, a reminder for folks to fulfill their financial obligations one month before they were due. The practice is rooted in the beginning verses of *parshat Ki Tisa*, which is the *maftir* portion we read in the second torah this Shabbat. Every man 20 and older (military age) pays a half-shekel; the rich aren't permitted to give more, the poor can't give less. When it comes to serving Hashem, all are equal.

Both historically and philosophically, there is a wealth of material related to this little half-shekel. In the *maftir*, the torah states that a shekel is worth 20 *gera*. It follows that a half-shekel is worth 10 *gera*. So why not just say 10 *gera*? The sages have some interesting explanations, and I heartily recommend a google search. Today, however, I'd like to explore a more basic question: why a half-shekel and not a whole shekel?

Most *mitzvot* have an element of wholeness about them. For example, we make a *bracha* over two whole loaves of challah, not two slices. Similarly, we welcome Shabbat with two new candles. And perhaps most notably, the 10 Commandments were written on two whole tablets, not one tablet divided in half.

In fact the *shnei luchot* may offer a clue as to why Hashem specifically requires a half-shekel from each of us. The first five commandments were written on one tablet, the second five on a separate one. Two halves, one whole. Together the two tablets complement and complete each other.

Following this logic, the half-shekel represents something that is only partial, and there's no great mystery as to what completes it; the answer is obvious: another half-shekel. Two halves, one whole. Literally they create an integrity. And symbolically, they mean even more.

Plainly the first half-shekel refers to us, the individuals who give it. So let's say you're a half-shekel looking for completion. Where do you turn? Well, there are several interpretations as to what the remaining half-shekel represents. Here are my two favorites:

1. The second half-shekel represents the community. Individually, we are separate, disconnected, broken. Together we are united into a whole, each of us integrated into *Klal Yisrael*.
2. The second half-shekel represents Hashem. This interpretation especially resonates for me, because the half-shekel is designated for the upkeep of the mishkan and, later, the temple — Hashem's dwelling place. By participating in the process, we humans are given the chance to be embraced by and feel a connection with our Creator.

I believe this way of looking at the second half-shekel offers a great exercise in humility and vulnerability, neither of which are Divine attributes, but the practice of both are sure-fire ways for us mortals to get a glimpse of them. Symbolically, it's as though Hashem is saying, "You and I are connected. For the purposes of this mitzvah, we are one. We become conscious of our dependence upon each other."

Of course, it's ludicrous to think that Hashem depends upon anything. Being almighty kind of goes with the job description. But symbolically, it's quite a powerful message, and remember, Hashem has always been big on symbols, whether it's rainbows, pillars of fire, talking donkeys or dry bones. Each half-shekel is humble enough to recognize it needs the other half in order to be made whole. And by doing so each acknowledges its vulnerability. Even Hashem is willing to show vulnerability — albeit symbolically — to show us just how much He cherishes our relationship.

Taken together, both interpretations help clarify the lesson of the little half-shekel. Essentially, fulfilling the mitzvah affords us an opportunity to grow both in solidarity and in spirit. As Adar approaches, there are roughly two weeks till Purim and six weeks till Pesach. May we as a community combine the components of our shekalim to merit *smachot*. May we celebrate together joyfully and comfort each other compassionately. And may we learn to depend on one other, like the single half-shekel, looking for its mate.