

Welcome to LSS

Welcome to LSS. We are so glad that you joined us for *shabbat*.

We are a Modern Orthodox synagogue devoted to making everyone, from all walks of life, feel that they have a home in the Jewish community.

Our synagogue is fully wheelchair accessible, with an elevator and bathrooms available on every level. This guide outlines some of the logistics and services we provide.

Whether you are a long-time member or this is your first time at LSS, we want you to feel at home.

Shabbat Shalom,

Shaul Robinson	Tamar Fix	Alan Samuels
Senior Rabbi	Executive Director	President
rabbi@lss.org	tamar@lss.org	president@lss.org



I have an idea to make this User Guide more useful. To whom should I speak?

Please send any suggestions to president@lss.org.

I had such a great shabbat experience and would love to join LSS as a member! How can I do so?

We're thrilled to hear that you enjoyed being here as much as we enjoyed welcoming you. Please visit our website at www.lss.org and click on the new member link on our homepage or call our office at 212-874-6100.

I had such a special shabbat! I'm just visiting but would love to make a contribution. How can I do so?

Thank you so much! While making a donation is certainly not necessary to visit our shul, your support is much appreciated and helps our shul continue to offer our high quality programming and services. To make a donation you can visit us at: www.lss.org/payment.

Is it possible to get shabbat meal hospitality?

LSS is committed to making sure every member of the community, and every visitor to the community, has a place to enjoy a warm, friendly *shabbat* meal. Whether you are a current member or a visitor looking for *shabbat* meal hospitality, please visit www.lss.org/hospitality to request or offer hospitality. (Please endeavor to do so by the Wednesday prior to the *shabbat*.)

I have some questions. Is there someone with whom I can follow up after shabbat?

Sure, we'd love to hear from you! Please feel free to email or call our office staff, Monday through Friday, at info@lss.org or 212-874-6100.

Tamar Fix	Executive Director	tamar@lss.org	Ext 101
Devora Movtady	Business Manager	devora@lss.org	Ext 106
Hailey Price-Shidler	Social Media & Events Coordinator	robin@lss.org	Ext 105
Ricky Lebowitz	Administrative Assistant	alanna@lss.org	Ext 104

Lincoln Square Synagogue

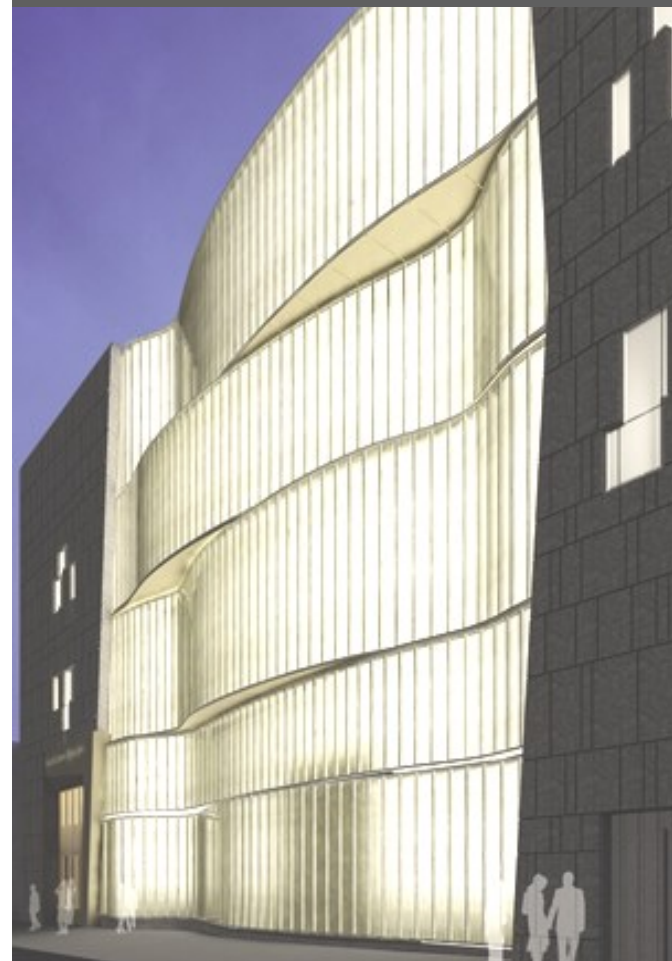
Download our **LINCOLN SQUARE SYNAGOGUE** APP for the latest information about LSS!



Follow us now on Social Media for the latest LSS news, information and updates.



Welcome to Lincoln Square Synagogue



A USER GUIDE FOR SHABBAT AT LSS

180 Amsterdam Avenue
New York, NY, 10023
Phone: 212-874-6100
E-mail: info@lss.org
www.lss.org





What *minyanim* (services) take place on *shabbat* morning?

On any given *shabbat*, the **Hashkama Minyan (7:45 am)**, the early service, takes place in the *Belfer Beit Midrash* on the 2nd floor. The **Main Service (9:00 am)** is held in the *Nathaniel Richman Cohen Sanctuary* on the lobby level. The **Beginners Service (9:15am)**, is a “No Hebrew Necessary” prayer experience with open, honest discussions about everything you ever wanted to know about prayer and Judaism. It takes place in room LL201, one level below the main floor. The **Rabbi Herschel Cohen Memorial Minyan (9:45 am)**, the late service, is held in the *Belfer Beit Midrash* on the 2nd floor. On some *shabbatot*, we may also have a *Women’s Tefilah Group* and/or a *Teen Minyan*.

Where can I find prayer books?

In the main sanctuary, *siddurim* and *chumashim* can be found in front of each seat. (Large print *siddurim* for those with visual impairments are available in the closet to the left of the sanctuary.) On the second level, they are available at the back of the *Belfer Bet Midrash*.

Where can I find a *tallit* (prayer shawl)?

On the main level, *tallitot* can be found in the closets directly outside of *The Nathaniel Richman Cohen Sanctuary*. On the second level, *tallitot* are available outside the *Belfer Bet Midrash*.

Where can I sit?

We are a modern orthodox shul, so each service has a separate Men’s and Women’s section. After that, however, you can sit ANYWHERE! At Lincoln Square Synagogue we pride ourselves on being a welcoming and friendly shul! There are no assigned or reserved seats. Please feel free to sit in any seat that is available.

Most importantly, where is the *kiddush* held?

Our communal *kiddush* is generally held in the lower level ballroom following the main service. In the summer, weather permitting, it may take place on the *Spira Family Terrace* on the 2nd level. All are welcome, please join us.

What options are available for babies, children and teens?

We boast a thriving family-friendly environment. Our main lobby, the *Shele Danishefsky Covlin Grand Foyer*, quickly becomes a “stroller park” on *shabbat* morning (though, if it gets too full, we ask that they be moved to the second floor). We have a number of programs for all ages. A ***Baby & Me*** program for ages 0-24 months takes place in the 3rd floor gym at **11:00 am**. (For nursing mothers, we have a special private room on the main level opposite the entrance to the women’s section.) We offer weekly drop-off **youth groups** for ages 2-12 on our second floor from **10:00 am to 11:45 am**. Our Youth Directors provide supervision while our Youth Counselors lead *tefilah* (prayer), learning, and play. Our **Magen Avraham Teen Department** offers a **monthly “Teen Minyan & Munch”** which begins with *shacharit* prayer service followed by a teen *kiddush*. At the back of the main sanctuary we have dedicated seats and space for parents of young children, including plush toys (for the children).



Are accommodations available for people with disabilities?

We want our *shul* to be welcoming to everyone. To that end, the *Nathaniel Richman Cohen Sanctuary* – named after a beloved member of our synagogue who used a wheelchair – is completely **wheelchair accessible**, from the *aron kodesh* to the *bima*. We provide access to a **sensory calming room** for children who benefit from a calm and quiet environment. It is located one floor down from the main level in Room LL207. (We ask that a caregiver or parent remain with the child at all times.) We have **large print siddurim** for those with visual impairments in the closet to the left of the main sanctuary. A solitary **wheelchair accessible bathroom** is available adjacent to the first floor coat room so that those needing bathroom assistance with an aide can have complete privacy.

Is the *shul* “nut free”?

We are a “nut sensitive” shul. Items served at *kiddush* do not contain nuts, but may be from a facility with traces of nuts. We ask, but do not enforce, that parents be considerate when bringing snacks for their children.

Is there a *shabbat* elevator?

Yes. The elevator by the main entrance operates on “*shabbat mode*.”

What should I do if I am sick or become injured?

If you feel sick, or become injured, please make yourself known to one of our ushers (stationed at the doors to the main sanctuary) or security volunteers (stationed at our main entrance). They will be able to find a medical professional, or call *Hatzalah* for you. There is a **first-aid kit**, together with a **defibrillator**, by the elevator in the lobby, and another first-aid kit by the elevator on the 2nd floor.

I need a little help. To whom can I speak?

Our ushers can help you. Just let them know what you need and they will be happy to help.

Where can I hang my coat?

A coatroom is located in our main lobby. There are also coat racks located outside the women’s section of the main sanctuary. On the 2nd floor, there are coat closets outside the *Belfer Bet Midrash*.

How can I learn more about Lincoln Square Synagogue and what is going on?

Please check out our informative website at www.lss.org. You can also sign up for *The Echod*, our weekly newsletter that provides information about what is taking place on that particular *shabbat*, announces *mazal tovs*, welcomes new members, thanks our *kiddush* sponsors, highlights upcoming events and classes, and much more. You can pick up a copy on our lobby table or in the racks near the elevators.

Security Notice

Our aim is to keep you safe whilst you are in Lincoln Square Synagogue. Before taking your seats please locate your closest and backup emergency exit. In case of an emergency evacuation please proceed away from the building via your closest exit, unless instructed otherwise, and move away from the building. In case of other emergencies please follow instructions from the security personnel. Children should be accompanied at all times, either in youth groups or with parents. (Children will be found in Lincoln Towers following an emergency evacuation). If you see something suspicious, report it immediately, either to a security team member, usher, or other person in charge. We thank you for your cooperation.