



the shofar

Temple Beth El Jewish Community Center, Aptos, California ♦ Vol. 51, No 3 ♦ November 2017 ♦ Cheshvan–Kislev 5778

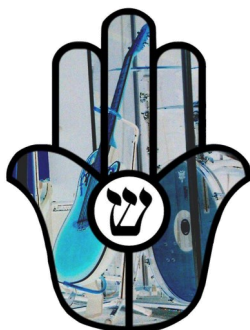
Justice Shabbat on Climate Change

Friday, November 10, at 7:30 PM

The ancient Jewish concept of Tikkun Olam calls upon us as Jews to do our part to repair the world. Life on our planet is threatened by the effects of climate change and it is critical for us to respond to this crisis before it's too late. To inform and inspire our response, the Social Action Committee is sponsoring a Justice Shabbat service on November 10th, that will focus on the impacts of climate change, local, state and national efforts to address it and what we as a congregation and as individuals can do to help. Speakers for the event are Congressman Jimmy Panetta, California Secretary of Natural Resources John Laird and Santa Cruz County Supervisor Bruce McPherson. At the oneg following the service, the conversation will continue with our speakers and members of various local climate change action groups.

Rock Shabbat

Friday, November 3, 7:30 PM

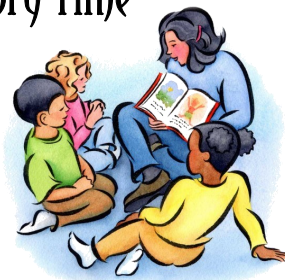


Magical, Musical, Spiritual!

Sponsored by Carolyn and Curt Coleman, Amy and David Harrington, Bob Katz and Leola Lapides, Judi and David Novik, Carol Skolnick.

Chanukah Story Time

With
Billie
Harris



November 30, 5:30 PM
at Bookshop Santa Cruz
1520 Pacific Ave., Santa Cruz

Come Join the TBE Young Families Project for Chanukah Story Time at Bookshop Santa Cruz! On Thursday, November 30th, at 5:30 PM, Billie Harris, our beloved story teller, will share some Chanukah books and stories with our young families. This is always a special way to explore the holiday and celebrate with friends. Bookshop Santa Cruz brings in beautiful Chanukah books for your family to purchase and enjoy. This is a free event. Please come and invite your friends to learn about our community and traditions in a fun and casual space.



Salon on Interfaith Climate Strategies: Working for Climate Change Solutions as an Interfaith Community

Tuesday, November 14, 7:00 PM
At the home of Amy & David Harrington

Continuing the community conversation started at the Justice Shabbat on Climate Change on November 10th, this salon will focus on coming together as an interfaith community to find concrete actions we can take to advocate for climate change solutions. Rabbi Marvin Goodman, member of the steering

committee for California Interfaith Power and Light and the executive director emeritus of the Board of Rabbis of Northern California, will speak at this event. This salon will be open to members of all faith groups.

Donation \$18. RSVP to sclarkson@tbeaptos.org.



Friday, November 17

5:45 PM

Vegetarian family Potluck Shabbat singing dinner

6:30 PM

Fabulous engaging Shabbat activities for children of all ages—including PJ Our Way activities for children ages 9-11.

Spirituality/Synagogue News

THOUGHTS FROM RABBI PAULA



Rabbi Paula

Shomrei Adamah—Guardians of our Earth

As I write this column, we are still waiting to hear about how we can help support efforts to rebuild structures at Camp Newman, our

beloved URJ Summer Camp, where many of us and our children have forged meaningful relationships and engaged in vibrant Jewish life. Most of the structures were burned down as more than a dozen wildfires rage across Northern California. So many memories of meaningful camp experiences have been evoked by this latest tragedy.

Each of us probably has stories about relatives who have been evacuated or lost homes during the recent hurricanes in Puerto Rico, Florida and Texas. During our Yom Kippur service, I saw a woman crying and after services when I asked her how she was doing, she said she was crying for all of the synagogues that were flooded in Houston. It seems like between the fires and storms, we are heading down a treacherous path of destruction.

If you look in the Torah, the first human being, Adam, is placed in the

Garden of Eden and he is told that it is his job—humanity's job—to tend it and guard it. We weren't created merely to fulfill our own personal desires. We have a role to play in this amazing creation we call earth. We are to be *Shomrei Adama*—guardians of our earth.

This is one reason we as Jews care about climate change. The issues surrounding global warming and the environment are deeply rooted within Judaism and particularly in the concept of creation. From a spiritual perspective, one could say that God created a good world and the human responsibility is to steward that world and to take care of it.

At our Climate Change Shabbat Service on November 10th, we'll be learning from our elected officials what is being done on our local, statewide and national levels to address the issues of climate change. Please join us as we hear from Congressman Jimmy Panetta, California Secretary for Natural Resources John Laird, and Fifth District Supervisor Bruce McPherson about how we can do our part to fulfill our obligations as *shomrei adamah*.

—Rabbi Paula Marcus



Rosh Hodesh Kislev

Join us for the women's celebration of the new moon. All women are welcome. Bring a friend! Our theme this month is "What are you thankful for?" We all need to find joy and thankfulness in our lives in these troubled times. See you November 21, 7:00 PM.

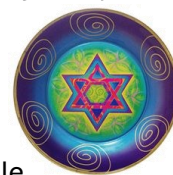
Sisterhood Gift Shop

The TBE Gift Shop is open on Sundays from 9:30 AM–12:00 noon and Wednesdays 2:30–6:00 PM.

Our Jewish art calendars can't be beat. Our Israeli imports, jewelry, ritual items and gifts will delight everyone.

Welcome back, Temple school parents. Drop in to the gift shop and see what's new, while your children are in class. Our Wednesday and Sunday hours were designed with you in mind!

Can't make Sunday or Wednesday? Call us to open the shop for you! Shirley 685-2710 or Ruth 476-1154.



Pine Ridge Reservation New Coat Project

The *Children of the Pine Ridge Reservation New Coat Project* is collecting new coats for children living on the reservation. The project is headed by Linda Six-Feathers and locally by Shaina Hall. All coats collected go directly to the Pine Ridge Reservation for distribution to children. The reservation is in South Dakota where they experience sub-freezing temperatures for most of the winter months. The reservation is also located in the poorest county in the United States. The collection barrel at the temple is located adjacent to the business office. We request coats from sizes 4–16. If you have any questions about this wonderful cause, please contact Shaina Hall via email at shainajbhall@hotmail.com.



DECEMBER 2017 SHOFAR DEADLINES

Copy is due November 1. Advertising deadline is November 7. Email copy or advertising questions to mstein@tbeaptos.org or call 831-460-1389. The SHOFAR is published September–June by Temple Beth El Jewish Community Center, 3055 Porter Gulch Road, Aptos, CA 95003. Phone 831-479-3444, fax 831-475-7246. A TBE membership benefit. Non-member subscription rate \$40/year. Vol. 51, No 3. Marcia Stein, Editor/Publisher.

Synagogue News

TEMPLE BETH EL BOARD OF DIRECTORS

2017-18

President—Scott Roseman

Executive Vice President—Amy Harrington

VP of Human Resources—Robyn Slater

VP of Communications—Michelle Dennis

VP of Education—Shani Ginsburg

VP of Membership Development—Gail Levine

VP of Fund Development—Margaret Gordon

VP of Worship & Justice—Jennifer Kaupp

VP of Operations—Wally Brondstatter

Secretary—Lauren Goldstein Schaeffer

Treasurer/Finance Committee—Andrew Goldenkranz

Congregant Facilitator—Nathaniel Deutsch

Immediate Past President—Gail Levine

EX OFFICIO BOARD MEMBERS

Senior Rabbi—Paula Marcus

Associate Rabbi—Shifra Weiss-Penzias

Business & Operations Manager—Nick Scalzo

Membership Experience & Program Manager—Melissa Sunberg



Protect Your Family
Achieve Peace of Mind

Deborah A. Malkin

**Specializing in
Wills and Living Trusts**

Practice includes Probate
and Trust Administration.

Call for a free initial consultation

Creekside Offices • 2425 Porter Street, Suite 3
Soquel, CA 95073 • 831- 462-9100

In The Temple Family



NEW MEMBERS

Lee & Shelley May

Naomi Bayer

Emily & Jamie Rakow

Kathryn Mintz & Jonathon Landeck

M. Glenn Fisher

Paul & Andrea Rosenfeld

Katherine Isbister & Rene Netter

MAY THEIR MEMORIES BE FOR A BLESSING



Belle Grudin, beloved mother of
Jeff Grudin, mother in-law of
Melissa Grudin

Marsha Alper, beloved wife of Ted
Alper and mother of Josh Alper,
beloved friend of Judie Block

Marilyn Shorenstein, beloved
mother of Michael Shorenstein



Youth

TEMPLE SCHOOL NEWS



Rabbi Shifra

Temple School Fosters a Love of Jewish Learning In a Joyful, Engaging and Supportive Community.

You may have heard me mention that the theme for Temple School this year is “total physical response learning.” Teachers will be

looking for opportunities this year to get students out of their seats and doing fun activities as much as possible at Temple School. I love it when parents tell me that their child protests when the family has an obligation and they have to miss Temple School. This is the goal. Of course, it is impossible to please everyone, but we have made great strides in making temple school a joyful and engaging experience. In 6th grade, for example, students go rock climbing to launch a discussion about bravery and heroism in the Tanach. When I asked students afterward what

the point of the activity was, they were not only able to summarize stories in the Tanach and articulate issues they raised, in addition they were happy to engage with me in further discussion. I am hearing more and more from students who look forward to Temple School, Rock Shabbat or youth group activities and offer to help out with the younger classes because they feel at home at TBE. By enhancing the enjoyment of Temple School, we hope to set the scene for a lifetime of Jewish connection.

Temple School is off to a great start. It was wonderful seeing so many of you at my parent tea, the Temple School Picnic, Rock Hashanah and Jr. Congregation. Thank you for all you do to support Temple School, including donations to our scholarship fund.

–Blessings, Rabbi Shifra Weiss-Penzias

New SRFY Advisor and Upcoming Events

Hello! My name is Danielle and I'm the new SRFY Advisor. I graduated from UCSC in 2015 and I'm currently getting my master's degree in public health. After working with Hillel for many years, it's an honor to now be a member of the TBE family! I look forward to our many fun upcoming events.

Our annual Monterey Bay Aquarium sleepover is on November 4th.

The NFTY CWR Fallinter is the weekend of December 1st and registration for that closes November 21st.

Our annual ski trip is also coming up on the weekend of January 5th.

Feel free to contact SRFY@tbeaptos.org for information about our events or with any questions regarding SRFY.



Like us on Facebook



<https://www.facebook.com/tbeaptos/>

TEMPLE SCHOOL CALENDAR

Wednesday, November 1

TS Grades 4–6, KEF, Hebrew, 7th Grade & Hebrew High, Jewish Parenting Group for Parents of Teens

Friday, November 3

Rock Shabbat

Sunday, November 5

TS Grades K–6, 3rd Grade Parent Participation, Jewish Parenting Group

Wednesday, November 8

TS Grades 4–6, KEF, Hebrew, 7th Grade & Hebrew High, Jewish Parenting Group for Parents of Teens

Sunday, November 12

TS Grades K-6, Mazel Tots, Jewish Parenting Group

Wednesday, November 15

TS Grades 4–6, KEF, Hebrew, 7th Grade & Hebrew High, Jewish Parenting Group for Parents of Teens

Friday, November 17

Beth El Bim Bam

Sunday, November 19

TS Grades K-6, Jewish Parenting Group

Wednesday, November 22

No Temple School

Sunday, November 26

No Temple School

Wednesday, November 29

TS Grades 4–6, KEF, Hebrew, 7th Grade & Hebrew High

Thursday, November 30

Chanukah Story Time at Bookshop Santa Cruz

Simcha Dedicates our Playground with our Sukkot Celebration

We started our new year at Simcha celebrating the beginning of the Jewish New Year and our annual Sukkot celebration and family potluck, along with a special dedication of our beautifully redone playground. This year was extra special as we all squeezed together inside of our brand new playground Sukkah—thanks to the hard work of the Brotherhood, who funded the permanent structure, Wally and Harry who put it together and the children who decorated it! We look forward to giving special thanks to our

honored guests who helped make the playground become a reality including: the TBE Board, Brotherhood, Amy Harrington, George and Gail Ow, as well as Wally Brondstatter who shepherded the project through every step of the way and Harry Reinert who did so much of the hard work. Rabbi Paula led us in song and celebration including sharing the etrog and shaking the lulav, lighting the Shabbat candles and sharing delicious food together. We will all remember this very special Sukkot!

Youth/Recognition

Mazel Tots

Sunday November 12,
9:45–11:15 AM, at Temple Beth El

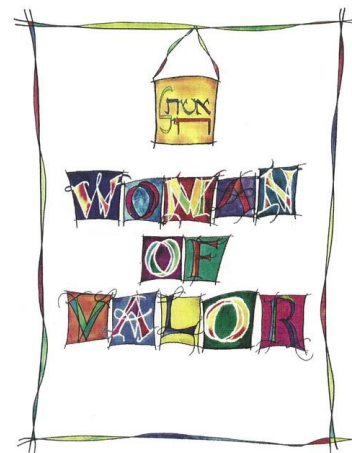


Mazel Tots is fun activities for children 5 years & under with their families. Just drop-in—no reservation is necessary. A \$5 donation is suggested. TBE members and non-members are welcome. Please bring a healthy snack to share.



Chanukah Story Time and Craft

Friday, December 1, 10:30 AM
at Wonderland Toys and Classroom Resources
4101 Soquel Drive
In Soquel on the corner of 41st Ave. and Soquel Drive.



2018 Woman of Valor Chosen!

Congratulations to Sandra Cohen, the 2018 Candy Coonerty Woman of Valor honoree. Save the date to honor Sandra and all her contributions to the community at the Candy Coonerty Woman of Valor ceremony and celebration on Friday, March 9, 2018.

PJ Library Supplies Santa Cruz Children with over 20,000 Jewish Books!



I want to share with you the tremendous impact that PJ Library is having on our Santa Cruz community.

PJ (for pajamas!) Library is an international program started by the Harold Grinspoon Foundation that engages families in their Jewish journey by giving free Jewish books and music to children ages six months through eight years. Harold Grinspoon is a noted philanthropist.

Since 2005, PJ Library has sent a total of 20,268 books to Santa Cruz families! As of October 2017, Santa Cruz has 200 active PJ Library subscribers, meaning that 200 children received Jewish books from PJ Library this month.

An additional 64 children ages nine through eleven in our community also received Jewish books this month through PJ Library's companion program for older youth, PJ Our Way. PJ Our Way (PJOW) is the next "chapter" of the PJ Library program. Pre-teens pick their own Jewish books

from 4–6 options. The Grinspoon Foundation also funds this program and pays 100% of each PJOW subscription.

PJ Library has done so much for Jewish youth within our community, whether they are temple members or not. If your children are not already PJ Library or PJ Our Way subscribers, I encourage you to join via their easy to navigate web site: <https://pjlibrary.org/home>. And, whether or not your children benefit, I encourage you to use the donation button on the web site to help the Grinspoon Foundation continue their important work. If you want to make a significant contribution to PJ Library, please contact Mary Horrocks at mhorrocks@hgf.org.

Please join me in thanking Harold Grinspoon, PJ Library, and PJ Our Way, for enriching the Jewish experience of our children.

—Margaret Gordon,
Fund Development Committee

A black and white advertisement for Neal Langholz. It features a headshot of a smiling man. To the right of the photo, the text reads: 'Serving Santa Cruz Since 1986', 'Neal Langholz', 'Broker Associate', '831.818.4822', 'neallangholz@gmail.com', and 'SPE # 20133104'. At the bottom, it says '1103 Mission St. Santa Cruz, CA 95060' and 'www.karonproperties.com'.

A black and white advertisement for Bookshop Santa Cruz. It features a photo of two people sitting on the grass and reading books. The text reads: 'BOOKSHOP SANTA CRUZ', 'NEW & USED BOOKS', 'Kobo E-BOOKS & E-READERS', 'Bookshop Santa Cruz - 1520 Pacific Ave', 'Downtown Santa Cruz - 423-0900', and 'www.bookshopsantacruz.com'.

Calendar Highlights

Senior Connections

Free Forum on Medicare Options for 2018



Medicare open enrollment is from October 15 through December 7. Now is the time for Medicare beneficiaries to compare plans, make sure they have the right prescription drug coverage for 2018—and potentially save money.

Find out what *all* your options are for Medicare in 2018 and what you need to know to protect yourself from becoming a target of Medicare fraud by attending the November 9, educational forum, 6:30 to 8:30 PM, in the TBE Social Hall.

This forum, presented by the Health Insurance Counseling and Advocacy Program (HICAP) of *Senior Network Services*, is free and open to the public. No reservations required.

For a complete schedule of the HICAP Medicare open enrollment forums throughout the county during Medicare open enrollment, call 462-5510 or go online at www.seniornetworkservices.org



November 13 Better Balance Chair Yoga Workshop with Suzi Mahler

There are three things we tend to lose with age; our muscle strength, our vision and our ability to walk and stand with confidence. Balance is directly related to our eye site and maintaining strong leg muscles. Please join Suzi Mahler in this informative Chair Yoga Workshop and learn ways to increase balance and strength with simple movements, postural awareness, breathing exercises and meditation.

November 27
Musician and musicologist Barry Guerrero will present *Mahler and the Late Hapsburg Empire*. He will discuss the social-political milieu in which Mahler conducted and composed.



Programs are on the 2nd & 4th Monday of each month, 2:00–3:30 PM in the TBE Library. (Come at 1:30 to nosh & schmooze.) Open to the public. Free.

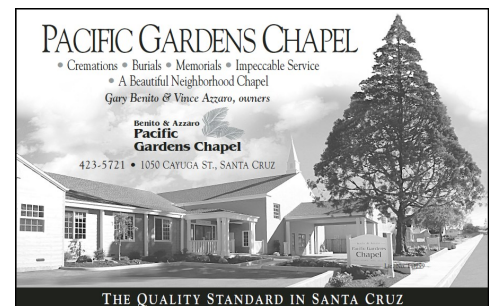
Has Genetic Medicine Arrived?

Brotherhood Bagel Brunch & Presentation



All are invited to the Brotherhood's bagel brunch on Sunday, November 19, 10:00 AM, at TBE. UC Santa Cruz Professor Jordan Ward, will present: "*Has Genetic Medicine Arrived? The story of CRISPR Gene Editing.*" For more information, login to Facebook and go to *Temple Beth El Brotherhood*.

Beginning at 10:00 AM, we'll nosh on a delicious all-you-can-eat bagel brunch, take care of a little Brotherhood business, followed by Professor Ward's talk at 11:00, concluding around noon. Recommended donation is \$3 for Brotherhood members and \$5 for non-Brotherhood members.



REIN & REIN

A PROFESSIONAL LAW CORPORATION

MICHAEL A. REIN • TERESA VIG REIN
LLOYD R. WILLIAMS, OF COUNSEL

REAL ESTATE AND
BUSINESS TRANSACTIONS
www.reinandrein.com

550 Water St., Bldg. H
Santa Cruz, CA 95060

Tel 831.607.8833
Fax 831.607.8832

Morgan Stanley

The Wedeen Hammer Group at Morgan Stanley

Rachel Wedeen, CFP*
Senior Vice President
Financial Advisor

Tiffany Hammer, CFP*
Vice President
Financial Advisor

6004 La Madrona Drive | Santa Cruz, CA 95060
831-440-5200

www.morganstanleyfa.com/wedeenhammergroup

© 2014 Morgan Stanley Smith Barney LLC. Member SIPC.
CRC89754105/14

Calendar Highlights



Lifelong Learning

- For all classes, please check the TBE weekly events email for the latest information.
- All classes are held at TBE unless otherwise noted.
- Register at sclarkson@tbeaptos.org. Forms available at TBE, on our website, and in the Temple Weekly.

Learn Some Hebrew with The Virtual Florentine Graffiti Tour

with Guy Sharett from streetwisehebrew

Thursday, November 2, 7:30 PM

Guy has a unique way of teaching Hebrew that is engaging and fun. He shares a PowerPoint presentation with photos that he took all over Tel Aviv in the last 12 years. Through analysis of the textual graffiti, stickers, lost pet ads and manhole covers, we read, translate, understand the Hebrew, talk about old and new, about changes in our writing system, but also about religion, politics, society, and immigration. Donation \$18. *Sponsored by Temple Beth El and Congregation Kol Tefillah.*

Wise Aging Information for 70+ Seniors

with Rabbi Richard Litvak

Monday, November 13, 3:30 PM

This information meeting is for the community to choose the day of the week and time of day for this five-week exploration of the aging journey.

Salon on The First Love Story: Adam, Eve and Us

with Rabbi Richard Litvak

Tuesday, November 7, 7:00 PM
at the home of Amy & David Harrington

Rabbi Rick will explore this new book by Bruce Feiler, revealing a journey across four continents and 4,000 years. The book explores how Adam and Eve introduced the idea of love into the world and how they continue to shape our deepest feelings about relationships, family, and togetherness. The book is available but not required. Donation \$18.

Deepening Connection: An Introduction to Jewish Meditation

with Etel Herring

Tuesdays, November 21 & 28,
December 5 & 12, 7:00 to 8:30 PM

Explore the basics of this ancient practice which also prepares you to join our Tuesday evening drop-in meditation circle. Cost is \$36 for the series. Minimum 4 participants—please register early! *Co-sponsored with Chadeish Yameinu.* For more information, call (831) 426-9432



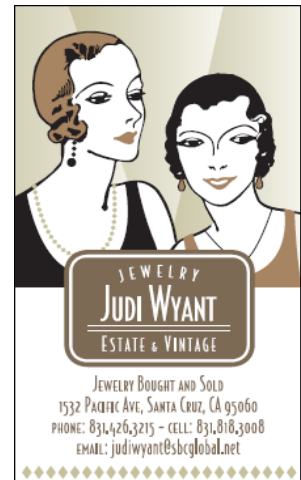
1st Night of Chanukah, Family Chanukah Celebration and Dedication of the Litvak Wing

Tuesday, December 12, 6:30 PM

Chanukah Extravaganza Dinner
Friday, December 15, 5:45 PM

Simcha Breakfast & Books
Sunday, December 17, 9:00 AM

Rosh Hodesh Tevet
Tuesday, December 19, 7:00 PM



General News

Library Lending is Here



The new, automated lending system is now up-and-running. Members may borrow books from the collection any time the library is available using the new self-check station and their library cards. We've enrolled most Temple members in the online catalog and library cards have been distributed via member badges. If you didn't find a library card slipped into your name badge, contact us at librarytbe@gmail.com.

Support the Shofar

The Shofar keeps you informed and connected to the Temple Beth El community. You value receiving this newsletter in the mail every month. Ensure that the Shofar arrives in your mailbox every month by donating to the Shofar Fund in memory of a loved one or in honor of someone.

You can also place a display ad in the Shofar or sponsor an issue. For more information contact Marcia Stein, editor/publisher, at (831) 460-1389 or mstein@tbeaptos.org.

A collage of three images. The top left image shows a man and a woman looking at a microscope. The top right image shows a woman crouching in a field. The bottom image shows three children in a science classroom.

discover

**MOUNT
MADONNA
SCHOOL**

Open House – November 5, 11:00 am
featuring *Hands-on Science and Conversation Café*

Art & Play in the Pre & K! – November 29, 9:30 am

RSVP 408-847-2717 MountMadonnaSchool.org
Pre/K - 12th grade | CAIS & WASC accredited | Nonsectarian | Founded in 1979

Annual High Holiday Appeal

Ellen Ortiz
Bonnie & Loren Morr
Roger & Lin Wapner
Deborah & Allen Korenstein
Lois Steinberg
Ruth Fogel
Rachel Wedeen
Jacqueline & Michael Tuttle
Peg Shemaria-Hedman
Mary Spire
Karolin Schwartz
James & Elisa Atkins
Paul Morris
Robert & Michele Kibrick
Rachel Deblinger
Carol Skolnick
Martha & Paul Jacobson

Wendy Strimling
David & Judi Novik
Rebecca & Scott Rubin
Amy & David Harrington
Jacob & Hila Michaelsen
Edward & Lori Scher
Anita & Ken Lande
Wally Brondstatter & Lauren Suhd
Fay Levinson & Joe Vela
Ilene Tyler
Karen Kohut
Paul & Susan Karz
Marcia Meyer
Jay & Ann Goodman
Jennifer & Raymond Kaupp
Kathleen Avraham

Deborah Ruiz & George Lerek
Carol Maler
Lenore Hindin
Bettina Aptheker
Bernard & Eleanor Hilberman
Teresa & John Leopold
Susan & Michael McKay
Janet Newman
Karen Zelin & Bill Underwood
Roberta Barnett & Charles Sutton
Nancy Gomez
Sheila & Leonard London
Tami Ellis
Abigail Katz
Larry & Ruth Bercovich
George Ow, Jr & Gail Michaelis-Ow
Louis Stromberg



CEMETERY FUND

A gift

Carmen & Harvey Gotliffe

CHOIR FUND (BEIT OLAM)

A gift

Sheet Music Plus

In honor of Emily Sinclair for leading
High Holiday music

Bernard & Eleanor Hilberman

In memory of Bernard's beloved
mother Molly

Bernard & Eleanor Hilberman

In memory of Irving C. Weill

Julie Lorraine & Barry Marks

GENERAL SERVICES FUND

In honor of Reb Chaim Leib for
carrying us through the Torah service
on 9/2

Shlomo & Miriam Vilozny

In memory of Vincent Wood—lovingly
Jack & Hila

Hila & Jack Michaelsen

In memory of Dennis's brother Darryl
Dennis & Cheryl Caspe

JANET ROTHCHILD ROCK SHABBAT FUND

A gift

Marilyn Rigler

Scott Roseman & Jasmine Berke

Julie Lorraine & Barry Marks

Linda Donovan & Jack Hain

Susan & Paul Karz

Vicki Halil & Gerald Kondo
Billy Sillavo & Jeanne Herrick
Liana Orsolini & Philip Davis
In memory of Francine Shafton
Phyllis & Barry Katz

L'DOR V'DOR ENDOWMENT FUND

A gift

Jim Atkins

LIBRARY FUND

In honor of Lee Jaffe

Margaret Gordon

In memory of my beloved husband
Martin

Miriam Rappaport

RABBI MARCUS DISCRETIONARY FUND

A gift

Stephanie Gelman

In honor of Rabbi Paula—thanks for her
help and support for our family

Julie Lorraine & Barry Marks

In honor of Boris Brail

William Firestone

In honor of Rabbi Paula—a huge thank-
you for officiating at Aaron's Bar
Mitzvah and for all the love and
support

Aaron, Marc, Nancy & Rachelle
Yellin

In memory of the passing of my dad Irv
Weill

Estalee Weill

SENIOR CONNECTIONS FUND

In memory of Dorothy Marks

Julie Lorraine & Barry Marks

In memory of Susan's father, Israel
Garellick

Paul & Susan Karz

SISTERHOOD

A gift

The Tomash Family

John & Judith Diffenbaugh

In honor of Shirley Ginzburg

Dale Levy "Lady of Venice"

SOCIAL ACTION FUND

In memory of Jeanette Freeman
Shapiro

Susan Freeman

TEMPLE SCHOOL SCHOLARSHIP FUND

In memory of Eileen Katz

Phyllis & Barry Katz

YOUTH TO ISRAEL FUND

In memory of Fred Tannenbaum,
Aimee's uncle, Rachel & Josh's great
uncle

Aimee, Andy, Rachel & Josh Martin

YOUTH GENERAL FUND

In honor of Talia Orzech and her
excellent Bat Mitzvah presentation
Paul Frommherz

November 2017

Temple Beth El Jewish Community Center • Cheshvan–Kislev 5778

All events are subject to change. Please check the Temple website. www.tbeaptos.org or call the office at 831-479-3444 to verify information.

SUNDAY	MONDAY	TUESDAY	WEDNESDAY	THURSDAY	FRIDAY	SATURDAY
			1 Healing Circle 12:30pm Temple School 4th–6th Grades, KEF 4:00pm 7th Grade & Hebrew High 6:45pm Jewish Parenting Group for Parents of Teens 6:45–7:45pm	2 Lunch & Learn 12:00pm Library Open 3:00pm Learn Some Hebrew with Guy Sharett 7:30pm	3 New Member Dinner 5:45pm Rock Shabbat Service 7:30pm  5:52pm	4 Kyra Phelan Bat Mitzvah 10:00am Shabbat Morning Service with Rabbi Lori (Vayera) 10:00am SRFY Sleepover (out)
5 Temple School K–6, 3rd Grade Parent Participation 9:45am Jewish Parenting Group 9:45am Adult B'nai Mitzvah Class 12:00pm	6	7 Salon on The First Love Story 7:00pm (out)	8 Pizza My Heart Simcha Fundraiser 4:00pm Temple School 4th–6th Grades, KEF 4:00pm 7th Grade & Hebrew High 6:45pm Jewish Parenting Group for Parents of Teens 6:45–7:45pm	9 Lunch & Learn 12:00pm Library Open 3:00pm Forum on Medicare Options 6:30pm	10 Social Justice Climate Shabbat Service 7:30pm  4:45pm	11 ShabbASANA Shabbat Yoga 10:00am Shabbat Service with CY (Chayei Sarah) 10:00am (out)
12 Temple School K–6 9:45am Jewish Parenting Group 9:45am Mazel Tots 9:45am Adult B'nai Mitzvah Class 12:00pm	13 Senior Connections 1:30pm Wise Aging for 70+ with Rabbi Rick 3:30pm	14 Interfaith Work on Climate Change Salon 7:00pm (out)	15 Healing Circle 12:30pm Temple School 4th–6th Grades, KEF 4:00pm 7th Grade & Hebrew High 6:45pm Jewish Parenting Group for Parents of Teens 6:45–7:45pm	16 Lunch & Learn 12:00pm Library Open 3:00pm	17 Beth El Bim Bam Potluck and Shabbat Activities 5:45pm Erev Shabbat Service 7:30pm  4:40pm	18 Torah Study with Rabbi Paula 9:00am Shabbat Morning Service (Toldot) 10:00am
19 Temple School K–6 9:45am Brotherhood Brunch 10:00am Adult B'nai Mitzvah Class 12:00pm Rosh Hodesh Kislev 7:00pm	20	21 Deepening Connection: An Introduction to Jewish Meditation 7:00pm	22 No Temple School Simcha Closed	23 Office Closed Simcha Closed	24 Erev Shabbat Service 7:30pm  4:36pm Office Closed Simcha Closed	25 Shabbat Morning Service (Vayetze) 10:00am
26 No Temple School	27 Senior Connections 1:30pm	28 General Board Meeting 7:00pm Deepening Connection: An Introduction to Jewish Meditation 7:00pm	29 Temple School 4th–6th Grades, KEF 4:00pm 7th Grade & Hebrew High 6:45pm	30 Lunch & Learn 12:00pm Library Open 3:00pm Chanukah Story Time 5:30pm (out)		

Who acts from love is greater than who acts from fear.

–Talmud, Sota



Hanukkah Extravaganza

Friday, December 15

5:00 PM Dinner

We have a treat this year. Our Chanukah meal will include a wide range of wonderful food, provided and prepared by Zeena, the Sisterhood and of course, the Brotherhood's famous latkes, Assorted beverages will be included as well. You're welcome to bring wine to enjoy with dinner. And as we always ask, please bring a dessert to share with 12 people or more. (Fruit and gluten free goodies are always welcome.) Reservations are required for dinner. Please remember to reserve early as we usually have to turn folks away due to our limited space. The RSVP Deadline is Tuesday, December 12. The cost: \$18.00 per adult, \$10.00 per child 6 years and older. Please use the registration form below.



6:30–7:30 PM Rock of Ages

Our inspiring service with the Rock Shabbat Band and the Junior Rock Shabbat Band will include traditional and brand new Hanukkah music. There will also be traditional Hanukkah games for kids in the library. If you wish to, please bring your Menorahs! No reservations are required for those attending only the service.

For questions contact Richie Solomon at (831) 336-1642 or solomonzoo@comcast.net.

❧ Hanukkah Extravaganza Dinner Reservation Form ❧

Please mail your RSVP form and payment to Richie Solomon, 218 Elena Dr., Ben Lomond, CA, 95005. Or you can bring your form and payment to the TBE office.

If your mailing label is not on the reverse side of this page, please include your contact information.

First & last name _____

Phone # _____

Email Address _____

Hannukah Dinner ~ Friday, December 15, 5:00 PM

RSVP forms and payment must be received no later than Tuesday, December 12.

Payment must accompany the RSVP.

#_____ of adults (age 13 and over) at \$18 each

#_____ of children (ages 6-12) at \$10 each

FREE for children 5 and under

Space is limited so get your RSVP in early!

Total payment for the Hanukkah Celebration Dinner \$ _____

Please bring a dessert for 12 to or more.

Fruit and gluten free foods will be welcomed.

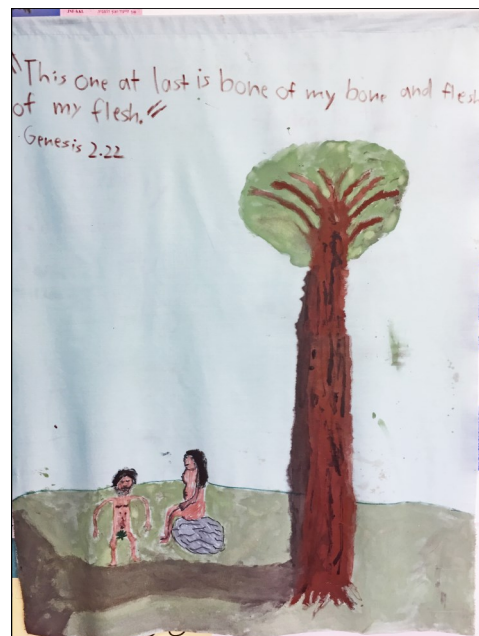
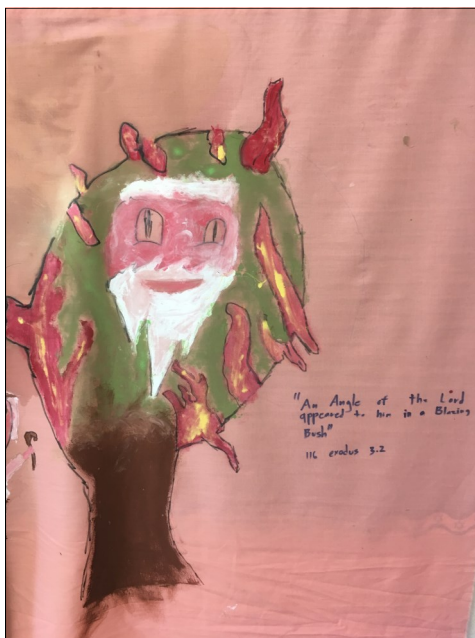
Bring your menorah if you wish.

We look forward to seeing you there!

TEMPLE BETH EL
JEWISH COMMUNITY CENTER
3055 Porter Gulch Road
Aptos, CA 95003

Non-Profit Org.
U.S. POSTAGE
PAID
PERMIT NO. 13
Aptos, CA

*Beautiful artwork made
by the 5th Grade Temple School class
for the Simchat Torah Celebration
on October 13th.*



Senior Rabbi Paula Marcus • Associate Rabbi Shifra Weiss-Penzias
Business & Operations Manager Nick Scalzo • Membership Experience & Program Manager
Melissa Sunberg • Board President Scott Roseman • Shofar Editor/Publisher Marcia Stein