



# the shofar

March 2020 ☆ Adar-Nissan 5780 ☆ Vol. 53, No 7

## TBE and Chadeish Yameinu Celebrate Purim



Monday, March 9, 7:00 PM

Join us for our annual hilarious Megillah reading with our Rabbis in costume, freshly baked hamentaschen, and other Purim refreshments. Fun for all ages!

## Children's Purim

**MEGILLAH READING, COSTUME  
PARADE, AND CARNIVAL**

**Sunday, March 8**

**Grades K-3 (and families with young children)**

Adults accompany their children

**9:45 AM** ~ Megillah reading and costume parade

**10:30 PM** ~ Carnival Games and Prizes

**Grades 4-6**

**9:45 AM** ~ Classroom activities

**11:00 AM** ~ Megillah Reading and Costume Parade

**11:30 PM** ~ Carnival Games and Prizes with Adults

***Volunteers needed!***

## Scholar-in-Residence Shabbaton with Reb Simcha Raphael

Friday and Saturday, March 6-7. Read about the programs on page 3.



### MAKE LIFELONG MEMORIES FOR OUR CHILDREN

Support Jewish teen activities (SRFY) by helping sponsor the Purim Carnival; be a carnival sponsor for only \$50, or a game sponsor for \$136. Make checks payable to TBE and note "Purim Carnival Sponsorship" in the memo. Stay tuned for volunteer opportunities—we'll need a lot!



## Shabbat Services

Friday, March 6

7:30 PM Scholar-in-Residence  
Shabbaton Erev Shabbat Service

Saturday, March 7

10:00 AM Yarbrough Bar Mitzvah

Friday, March 13

7:30 PM Confirmation Shabbat Service

Saturday, March 14

10:00 AM ShabbASANA

10:00 AM Mendivil Bat Mitzvah

Friday, March 20

7:30 PM Rock Shabbat

Saturday, March 21

10:00 AM Shabbat Morning Service  
With Chadeish Yameinu

Friday, March 27

7:30 PM Erev Shabbat Service

Saturday, March 28

10:00 AM Shabbat Morning Service  
with Rabbi Lori

## TABLE OF CONTENTS

Spirituality • pages 2,3  
Synagogue News • page 4  
General News • page 5  
Donor Recognition • Pages 5,6  
Contributions • page 7  
Activities and Events • page 8,9  
March Calendar • page 10  
Young Families and Youth • page  
11, back cover  
Film Festival • back cover

Temple Beth El is a Reform congregation serving the Jewish community  
in the greater Santa Cruz area.

Passionate about peace and justice • Creative about prayer • Joyful about tradition

# Spirituality

THOUGHTS FROM RABBI PAULA



Rabbi Paula

One of the most frequent questions I am asked is, “What is the Jewish view of what happens after death?” We all know the easiest response is that different Jews have different ideas about this topic. In answering this question, I have mentioned that some Jews believe in reincarnation, referred to as *gilgul hanefesh*—the cycling of the soul. People are often surprised to hear this because it is discussed in Kabbalistic esoteric mysticism. This concept is not discussed in the Bible or the Talmud. The idea is that there is a *gilgul*, “rolling,” the soul “rolls” through time from one body to a different body.

I hope that in raising this question, I have sparked more interest in understanding Jewish views, (emphasis on the plurality of opinions) about death and after-life. From Friday night, March 6, through Saturday evening,

March 7, Rabbi Simcha Raphael will be our Scholar-in-Residence.

Temple Beth El and Chadeish Yameinu are co-sponsoring a Shabbaton on Judaism and the Mysteries of Life, Death, and the World Beyond. On Friday evening, during our Erev Shabbat service, Rabbi Simcha will give the d'rash about *Joseph's Bones and the Jewish Tradition of Memory*.

On Saturday morning during the Shabbat service, Rabbi Simcha will teach about the “Afterlife Journey of the Soul in Kabbalah.” This will be at Chadeish Yameinu.

On Saturday evening, Rabbi Simcha will be sharing *Tales of the World Beyond: Stories of Ancient Ancestors, Wandering Spirits, and Reincarnating Souls*. This event will be at 7:00 PM, at Pacific Gardens Chapel.

I hope you will join us in learning about this important and fascinating area of Jewish thought. For more details please go to <https://bit.ly/2SCCrij>.

—Rabbi Paula Marcus

## PROTECT YOUR NEST EGG

No one wants Long Term Care Insurance but many of us will need it, and Medicare covers very little. There are more options today. Long Term Care might be more affordable than you think.

to find out more, contact:

**STEVE SHAPIRO, CFP®**  
831.588.7418 (cell)  
[www.LTCSantaCruz.com](http://www.LTCSantaCruz.com)



## Rock Shabbat

Friday, March 20  
7:30 PM

Spiritual, musical, uplifting.  
Shabbat for the whole family!

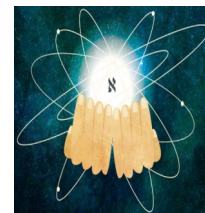
## Sponsor a Rock Shabbat!

The temple is still looking for sponsors for our ever-popular Rock Shabbats in May and June. Sponsorships are \$600 and are often funded jointly by two or more families or a Chavurah. Our Rock Shabbats are uplifting and moving and attract a very large group of enthusiastic congregants. Your name will be projected on the sanctuary wall as the night's Rock Shabbat sponsor. For more information, please contact Gail Michaelis-Ow at [gailmow@gmail.com](mailto:gailmow@gmail.com) or (831) 423-0128.

## Rosh Hodesh Nisan The Women's Seder

Thursday, March 26  
7:00 PM

at the home of  
Wilma Gold  
in Watsonville



Please join the women's Rosh Hodesh group and TBE Sisterhood for an evening honoring our foremothers, and ourselves, as Jewish women. We will share a vegetarian potluck dinner. Volunteers are needed and greatly appreciated! Please RSVP to Lenore at [lenoreh@cruzio.com](mailto:lenoreh@cruzio.com). All women are welcome.

Each month, the women's Rosh Hodesh group comes together at the New Moon to deepen our understanding of our own spirituality and relationship with Judaism as women—through literature, scripture, art, and music. We create sacred space, midrash, song, and study, as we make friends and strengthen our identity as Jewish women, and take a moment to fill our hearts, minds, and souls. Please visit us at <https://groups.io/g/RoshHodesh>. Please note we have changed the Seder details. We may change the theme later. We'll let you know. Thanks!



# Spirituality

## Join Us As We Celebrate the Confirmation of Our 10th Graders

*You are cordially invited to attend Temple Beth El's Confirmation Shabbat on Friday, March 13, 7:30 PM*

Please join us for a special Shabbat service in celebration of the Confirmation class. An Oneg Shabbat to congratulate the confirmands and their parents follows the service.

Confirmation is the affirmation from our students of their intention to live their lives as Jews and as part of the Jewish community. It is also the community's commitment to our students to always be there to support their Jewish lives. Our 10th graders will lead a creative service. They will give speeches about what their Jewish identity means to them. It is always a very moving and fun service. Please join us to celebrate this momentous occasion in the lives of our youth. Everyone is invited!

Brook Allen Brower – Miranda Allen Brower and Matt Brower

Albert Cornblatt – Maurice and Glen Cornblatt

Dalia Dubin – Victor and Jocelyn Dubin

Jordyn Edelstein – Scott and Kerry Edelstein

Rowan Kern Jones – Sheryl Kern-Jones and Michael Jones

Meghan Kearney – Lori and Jim Kearney

Talia Orzech – Shoshanah and Joshua Orzech

Kyra Phelan – Shana Rosenfeld Phelan and Peter Phelan

Jonah Smith – Leora Fromm and Brian Smith

Benjamin Yanowsky – Mark and Rebecca Yanowsky

## Judaism and the Mysteries of Life, Death, and the World Beyond

A Scholar-in-Residence Shabbaton with Reb Simcha Raphael

**Friday evening, March 6**

7:30 PM at Temple Beth El  
Erev Shabbat Services/Dvar Torah *Joseph's Bones and the Jewish Tradition of Memory.*

**Saturday morning, March 7**

10:00 AM at Chadeish Yameinu, 740 Front St., Suite 170, Santa Cruz  
Shabbat Services/Noon Lunch N'Learn: *Afterlife Journey of the Soul in Kabbalah.*

**Saturday evening, March 7**

7:00 PM at Benito & Azzaro Pacific Gardens Chapel, 1050 Cayuga St., Santa Cruz.  
Havdalah/Story-Telling—*Tales of the World Beyond: Stories of Ancient Ancestors, Wandering Spirits and Reincarnating Souls.*

Reb Simcha Raphael, PhD is the founding director of Da'at Institute for Death Awareness, Advocacy and Training, and an adjunct professor of religion at LaSalle University in Philadelphia.

*Presented by Chadeish Yameinu—Jewish Renewal of Santa Cruz and Temple Beth El Jewish Community Center; co-sponsored by Benito & Azzaro Pacific Gardens Chapel.*



## Passover Preparation and Family Fun

March 22, 1:00–2:30 PM

Passover will be here before we know it! Join TBE's Young Families Project as we learn together about the holiday of Passover through interactive games and activities. We will make and bake matzah, check out some great Passover books, learn more about the items on the Seder plate, and meet other Jewish families at this fun, festive Passover preparation event. This FREE activity is for children of all ages. Special PJ Our Way activities will be included for ages 9–12. Come take the Matzah Challenge!

## Interfaith Easter-Passover Dialog

Tuesday, March 17, 7:00 PM, at TBE

Join us for our annual Interfaith Passover Study with Rabbi Paula and Deacon Patrick Conway.

## REIN & REIN

A PROFESSIONAL LAW CORPORATION

MICHAEL A. REIN • TERESA VIG REIN  
LLOYD R. WILLIAMS, OF COUNSEL

REAL ESTATE AND  
BUSINESS TRANSACTIONS  
[www.reinandrein.com](http://www.reinandrein.com)

550 Water St., Bldg. H  
Santa Cruz, CA 95060

Tel 831.607.8833  
Fax 831.607.8832

# Synagogue News

A THOUGHT FROM THE  
EXECUTIVE DIRECTOR



Tanya Lorien

As I write this article, it is still February. We are awash in the Democratic primaries and the California primary is on the horizon. I find Purim to be so appropriate to this moment—a moment where the country is focusing on what divides us. But what if we could strip away all the artificial constructs that separate us, as we are instructed for Purim celebrations, and respond to each other humanely as humans. What a different place the world would be. The Temple Beth El community stands as a shining example of what can happen when people support one another through personal struggles and the struggles that face our nation and planet. We find ways for these things to bind us together, teaching us, and finding our joys and seasons together. This not only strengthens us personally, but also financially and is the stimulus to Temple Beth El being more stable and financially sound. Thank you all.

—Tanya Lorien

## In The Temple Family



### NEW MEMBERS

Eden Mendel Holt and Graham Holt  
Janice Rose

### MAY THEIR MEMORIES BE FOR A BLESSING



Warren Phillip Weinstock,  
beloved father of Diane Levin,  
father-in-law of Larry Levin, and  
grandfather of Kimberly, Jeremy  
and Annie.

Gladys Gilbert, mother of Korrine  
Fitz, mother-in-law of Terry Fitz,  
and grandmother of Savannah and  
Gabiella Fitz.

## TBE Membership/ Engagement Committee

Building community has long been recognized as one of the cornerstones of Temple Beth El. Ever wonder how that community got built? Do you want to participate in the continued building? The Membership/Engagement committee works toward involving all of our temple family to strengthen bonds and increase connections.

Our committee works on programs ranging from greeting people at Shabbat services to coordinating temple events—including neighborhood gatherings, long-term member events, new member events—and everything in-between.

We are an energetic and fun group, and we are looking for more people to join us. Currently, we meet one Friday morning a month, but are moving toward a more flexible meeting schedule, including electronic meetings.

If you are interested in helping out with any of these activities (even if you don't want to go to any meetings) or if you want more information, please email Denise Miller at [denisej199@gmail.com](mailto:denisej199@gmail.com) or Andrea Yanowitz at [andrea@yanomedia.com](mailto:andrea@yanomedia.com).

## Sisterhood Gift Shop

Wednesdays, 2:30-6:00 PM  
Sundays, 9:30 AM-12:00 Noon

### PASSOVER HOURS

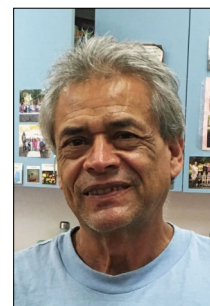
Beginning Monday, March 30  
Monday through Friday, 10:00 AM-4:00 PM,  
open to 6:00 PM on Wednesdays  
Sundays, 9:30 AM-12:00 Noon

### APRIL 2020 SHOFAR DEADLINES

Articles are due March 3.  
Advertising deadline is March 5. Email  
text or advertising questions to  
[mstein@tbeaptos.org](mailto:mstein@tbeaptos.org) or call (831) 460-  
1389. The Shofar is published  
September thru June by Temple Beth  
El Jewish Community Center, 3055  
Porter Gulch Road, Aptos, CA 95003.  
Phone (831) 479-3444, fax (831) 475-  
7246. A TBE membership benefit. Non-  
member subscription rate is \$40/year.  
Vol. 53, No. 7. Marcia Stein, Editor/  
Publisher.

GET TO KNOW

## Eloy Sanchez



This month's "Get to Know" is a Temple Beth El staple:

custodian Eloy Sanchez. A fixture for 11 years now, Eloy often works six days a week doing everything from cleaning, to computer and sound system set-ups, to general repairs and maintenance.

His days consist of prepping preschool and religious school classrooms, Shabbat and holiday services, luncheons and dinners, celebrations, meetings, and a wide variety of programs—as well as cleaning and maintaining those spaces every single day. Arriving before anyone else and staying well after the last member leaves, Eloy is dedicated to keeping our facility clean and functional.

In addition to working at TBE, Eloy has a full-time position at UCSC as well. In his minimal free time, he likes to listen to all types of music, especially violin music. He also likes to shop for his family; his wife of 26 years and three children ages 14 to 25 who all moved back to Mexico several years ago. They manage to keep in daily contact through calls and video calls; "a lot of calls," he explains. Eloy has a strong work ethic and prides himself on never calling in sick or taking a day off. He uses all of his vacation time to visit his family. Executive Director, Tanya, commends him and uses these two words to describe him; "unparalleled reliability!" Eloy describes himself as a "very organized person, dedicated and a good daddy." Rabbi Shifra adds that she also respects his intelligence and commitment. "My family were immigrant workers. I can identify with him and respect him. I am really glad that he enjoys working here, he does a lot for the temple and for Temple School!"

Thank you, Eloy, for your long service and dedication to Temple Beth El!

# General News/Donor Recognition

## TBE Building Just Communities

Nine TBE members travelled to San Francisco in January for the Northern California regional gathering of the RAC. The RAC (Religious Action Center) is the political arm of the Reform movement, a joint effort along with the CCAR (representing Reform rabbis).

At this gathering we worked to strategize around issues including gun violence prevention, affordable housing, climate and environmental justice. We also organized around a voter engagement campaign for 2020 similar to what we did in 2018, in which our congregation achieved a 96% voting rate!

Voting and political engagement is a strong Jewish tradition and we're proud that so many of our congregants are involved locally, statewide, and nationally. **We are aiming to be a 100% voting congregation in 2020.**

As a religious non-profit, we are strictly nonpartisan and do not endorse candidates, but we do ask each person to vote your conscience consistent with our Jewish values.

We have been asked to conduct a town hall on the upcoming schools and communities first ballot initiative, which would modify Proposition 13 by reassessing commercial properties while continuing Proposition 13 protections for residential properties. We will not be asking for a statewide endorsement, rather a way to raise the issue and allow for all voices to be heard on this issue.

Nationally, the RAC has five issue cohorts which we are all invited to join:

- Environmental Justice
- Gun Violence Prevention
- Racial Justice
- Immigration Justice
- Reproductive Rights and Justice

You can find out more at: <https://bit.ly/39orO9d>. Come to a Social Action/Social Justice committee meeting to learn more about this work and get involved.

## Gift Card Thank You Presentation: 'Nest' Program for Migrant Kids at the Border

Gaby Litsky thanks those who donated to the Hanukah Gift Card Drive for your support. A portion of that fund went to the *Nest*, an early childhood center for migrant kids living in a shelter across the street in Tijuana. She spent time volunteering there in late December and will share slides and talk about her experience on Tuesday, March 10, 7:00 PM, in the temple lounge. Snacks will be provided. Get information about the "Nest" program for migrant children at <https://bit.ly/2Sb6Yob>.



Participate in the *MAZON Project*—our longest-running social action program!

Our fabulous February volunteers were: Martha Jacobson (2X), Jacqueline Tuttle, Penny Chesluk, Vicki and Michael Stone (2X), Rachel Katz and friends (3X), Marc and Nancy Yellin (2X), Catherine and Bob Cooper, Margaret Brose, Leora Fromm (2X), Ken Wagman and friends (5X!).

Participation in the Temple Beth El *MAZON Project* brings love and spiritual sustenance both to givers and receivers via the mystical power of home-cooked food and *Tikkun Olam*. Try it. You'll like it! Sign-up now by going to the SignUpGenius Mazon link listed under "*MAZON Project*" in the "*Social Action*" pull-down menu on the TBE website, or contact Chris Goldstein at [orongold@aol.com](mailto:orongold@aol.com) or Robin Belkin at [Robin@MyVeryOwnCoach.com](mailto:Robin@MyVeryOwnCoach.com).

## Donor Spotlight: Marlene Pitkow



In this month's Donor Spotlight, we would like to acknowledge and thank extremely long-time volunteer and the engine behind Senior Connections, Marlene Pitkow! Marlene began putting this hugely popular program together with a group of other wonderful women back in 2006 because they saw a lack of programming aimed at this segment of our community. Using her PhD in Performance Studies, and her experience working in arts management, Marlene has cultivated a plethora of engaging events showcasing music, theatre, film, comedy, academia, literature and rabbinical roundtables.

Programs are held on the second and fourth Mondays of the month, are free, and open to the entire community! All programming is funded solely through donations made to the Senior Connections fund and Marlene, who personally has contributed thousands of hours over the years, planning and guiding the almost 300 programs to date. Recently, their events had to be moved from the temple Library into the Social Hall due to the growing audience size. A typical Monday may welcome 45 people and more popular topics can draw more than 80!

Senior Connections is always open to new topic ideas, new guests, and of course, new donations! Anyone can join the committee or *even* lead a program or two. In the future, the plan is to add field trips and other special programming to the schedule. Mark your calendars for May 4th—their annual fundraising luncheon, featuring a delicious catered lunch and delightful entertainment by a Klezmer Trio.

Marlene enjoys giving—she gets a lot out of it personally too; "It's very nourishing for me to do this and it's important!" When Marlene and her family moved here from Paris and NY, Temple Beth El took the place of her family so far away and she wanted a way to give back. We are so very blessed that Marlene has given of her time and talents so generously over so many years, contributing to our knowledge, our enjoyment, and our community! Thank you so much Marlene Pitkow!



# Annual Chanukah Appeal Donor Recognition

Bettina Aptheker and Kate Miller  
Murray and Sheila Baumgarten  
Naomi Bayer  
Paul and Carol Berman  
Mark and Judy Brenis  
Michael Cahn  
Barbara Carey  
Carolyn and Curt Coleman  
Shira Coleman  
Julia Cornblatt  
Sandy Davie  
Michelle Dennis  
Victoria Finder  
Don Gartner and Donelle Ehritt  
David Gazek and Shani Ginsburg  
Janet Gellman and Nancy de la Pena  
Laura Giges and Jon Edelbaum  
Alison Gold  
Margaret Gordon  
Ariel and Stephen Gray  
Amy and David Harrington  
Billie Harris  
Lenore Hindin  
Kyle Holder

Paul and Martha Jacobson  
Richard Josephson and Loretta Rao  
Paul and Susan Karz  
Shoshana and Eric Kashnow  
Jennifer and Raymond Kaupp  
Allen and Deborah Korenstein  
Arnold Kragen and Marcia Smith  
Nita Lamendola  
Estelle Levine  
Adam and Katrina Lippman  
Julie Lorraine and Barry Marks  
Morgan and Kathleen Magid  
Jacob and Hila Michaelsen  
Mordecai Mitnick  
Dafna and Yosi Mizrahi  
Elaine Moore and Bruce Davis  
Bonnie and Loren Morr  
John and Merry Oppenheimer  
Daniel Orange and Bonnie Holmer-Orange  
Ellen Ortiz  
George Ow and Gail Michaelis-Ow  
Lenny Pagorelsky and Michaeline Kiss  
Sharon Papo and Amber Weiss  
Philip Posner and Louise Drummond

Melody Randel and Susan Kerr  
Lester Reichek and Rima Lieben  
Jeff and Deborah Roisman  
Ivan Rosenblum and Mary Fran Archer  
David and Muriel Rosenthal  
Cindy Rubin and Brian Rosenthal  
Rebecca and Scott Rubin  
Joel and Holly Rudnick  
Deborah Ruiz and George Lerek  
Harry and Orsolya Salzberg  
Carl and Karla Sanders  
Barbara Schatan and Richard Linzer  
Daniel Seftel  
Judi Sherman and Rachel Bickert  
Shelley and David Sonnenberg  
Lois Steinberg  
Melissa and Cary Sunberg  
Priva and Michael Tarbet  
Michael and Jacqueline Tuttle  
Lori and Jason Veitch  
Roger and Elinor Wapner  
Leonard and Geri Wolff  
Ben and Judith Yokel  
Marian Zeidler

A total of \$13,155.00 has been raised. With deep appreciation, THANK YOU!

## Art & Play in the Pre & K!

March 11, 9:30 am

### Summer Camp

Programs start July 13

- CAIS & WASC accredited
- Nonsectarian, independent, nonprofit school
- 375-acre campus among a redwood forest and hilltop meadows
- Bus transportation

**MOUNT MADONNA SCHOOL**

SERVING PRE/K-GRADE 12

408-847-2717

[MountMadonnaSchool.org](http://MountMadonnaSchool.org)



# Contributions *January 1-31*

## BROTHERHOOD DONATION

Marq and Elizabeth Lipton

## BROTHERHOOD DUES 2020

In honor of my late father and mother, Jack and Eloise Pearl  
Allison and Jacob Pearl

## CANDY COONERTY WOMEN OF VALOR FUND

A gift

Philip Issenman

In honor of Gail Michaelis-Ow for all your contributions to TBE and the greater community!

Carolyn and Curt Coleman

## CHANUKAH APPEAL

Michelle Dennis

Lester Reichek and Rima Lieben

Jennifer and Raymond Kaupp

Paul and Martha Jacobson

Marian Zeidler

Daniel Orange and Bonnie Holmer-Orange

Harry and Orsolya Salzberg

John and Merry Oppenheimer

Paul and Carol Berman

Mordecai Mitnick

Joel and Holly Rudnick

Ariel and Stephen Gray

David Gazek and Shani Ginsburg

Michael Cahn

Margaret Gordon

Ellen Ortiz

Janet Gellman and Nancy de la Pena

Bettina Aptheker and Kate Miller

Leonard and Geri Wolff

Adam and Katrina Lippman

Naomi Bayer

Lenore Hindin

Melody Randel and Susan Kerr

Barbara Carey

Carolyn and Curt Coleman

Cindy Rubin and Brian Rosenthal

David and Muriel Rosenthal

## CHOIR FUND

In honor of Emily Sinclair  
Sandra Cohen

In honor of Emily Sinclair and Vlada Moran

Bernard and Eleanor Hilberman

## GENERAL MEMBERSHIP SERVICES FUND

A gift

Sharon McCorkell

In honor of Mordecai Coleman becoming a Bar Mitzvah

Nancy and Charles Barr

In honor of Jane Jordan and honoring her birthday

Margaret Gordon

In loving memory of of Edwin J. Block  
Judie Block

In memory of Albert and Eva Cohen  
Leta Miller

In memory of Rubin R. Phillips

Raymond and Christine Phillips

## ILSE E. ROWE HEBREW SCHOOL ASSISTANCE FUND

In honor of Harold Raphael's 90th birthday

Renee and Dave Roberts

## IVAN ROSENBLUM PIANO CONCERT

A gift

Martha C. Miller, RMO

Thanking you for the Ivan Rosenblum concert

Margaret Gordon

## JANET ROTHCHILD ROCK SHABBAT FUND

In honor of the Bar Mitzvah of Mordecai Coleman

Julie Lorraine and Barry Marks

## MINYAN FUND

In memory of Martin Hindin  
Lenore Hindin

## ONEG FUND

In honor of Jerry Ruben and Rolla Ruben, my brother and sister-in-law  
Adelle Tomash

In honor of my mother Roselyn Levine  
Gail Levine and Emily Wughalter

## PIANO FUND

In memory of Alan Miller  
Dennis and Cheryl Caspe

## RABBI MARCUS DISCRETIONARY FUND

A gift

Debra and Tony Sloss

James Engelman and Claire

Witherspoon

In honor of Rabbi Paula Marcus  
Lorrene Gelb

In memory of Joe Engelman  
Paul and Gwen Steinberg

## RABBI WEISS-PENZIAS DISCRETIONARY FUND

A gift

Debra and Tony Sloss

## SECURITY DONATION

A gift

Barbara Carey

## SISTERHOOD DUES

In memory of Connie Caldwell  
Sara Rigler

## SOCIAL ACTION FUND

In memory of Nehemiah Piller and Paul Benevento  
David and Sara Benevento

**The following SUSTAINING DONORS (\$3,600-\$3,899) were unintentionally absent in the December 2019 Shofar. We thank them and acknowledge them here.**

Rose Ashford and Felix Fields  
Martin Chemers and Barbara Goza  
Chemers  
Morty Cohen and Barbara Almeter-Cohen  
Kate and Lindsay Connor  
Nicole and Eli Karon  
Barry and Phyllis Katz  
Nina Koocher and Bernard Elbaum  
Ellen and John Moir  
Lawrence Rosenbaum  
Daniel Seftel  
Marni and Larry Williams

**David Kibrick, EA**  
(831) 824-4306  
info@santacruz-ea.com  
https://www.santacruz-ea.com/  
Enrolled Agent  
Quickbooks® Certified ProAdvisor

**Your Santa Cruz Tax Professional**

Helping Individuals, Small Businesses & Nonprofits

- Tax Consulting and Preparation
- Accounting Services & Setup
- Business and Online Consulting
- Tax-Related Financial Advice

Serving Santa Cruz Since 1986  
**Neal Langholz**  
Broker Associate  
831.818.4822  
neallangholz@gmail.com  
SRES 0083304




1103 Mission St. Santa Cruz, CA 95060  
www.karonproperties.com

**BOOKSHOP SANTA CRUZ**

- NEW & USED BOOKS
- Kobo E-BOOKS & E-READERS

Bookshop Santa Cruz - 1520 Pacific Ave  
Downtown Santa Cruz - 423-0900  
www.bookshopsantacruz.com





# Activities & Events

UNDER THE TENT OF ABRAHAM

## One Earth, Many Peoples, One Family

*How do the stories and parables from our religious traditions call us to serve?* Come, gather under the Tent. Through education and dialogue, we aim to help create a world where people of different faiths, or no faith, can live in harmony and peace.

Sunday, March 1, 2:00-5:00 PM  
Peace United Church of Christ  
900 High Street, Santa Cruz

Presenters will be Rev. Robin Mathews-Johnson, Watsonville United Methodist Church; Rabbi Paula Marcus, Temple Beth El; Bruce Burnett, Islamic Center Watsonville; and Erica Aisha, Islamic Center Santa Cruz. Childcare will be available for children aged five and up.

Save the dates for future events:  
August 16 and October 18.

## Judaism as a Spiritual Journey

with Rabbi Shifra Weiss-Penzias  
Sundays, March 1, 8, 15, 22, 29, and  
April 19, from 12:30-1:30 PM.

This class explores our people's and our individual spiritual journeys, using *A Book of Life* by Michael Strassfeld.



## Simcha Preschool Pizza Fundraiser

Wednesday, March 11  
4:00-9:00 PM  
at Pizza My Heart  
2180 41st Ave. in Capitola

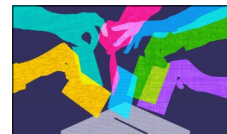
Take out or dine in.

**Be sure to mention Simcha Preschool and they get 30% of your purchase!**

## Senior Connections

March 9

Research Astronomer at University of California Observatories/Lick Observatory, Robert Kibrick: *Challenges to Democracy (insecure voting systems, gerrymandering, voter suppression, electoral college) and current efforts to address each challenge*



March 23

UCSC Instructor Bruce Thompson: *Jews and 'The Wizard of Oz'*



Free and open to the general public!  
Come at 1:30 PM to nosh and schmooze. Program begins at 2:00 PM.

A BENEFIT CONCERT FOR TEMPLE BETH EL

Presenting:

**Ivan Rosenblum, Anya Ismail,  
Elizabeth Neff, Tatyana Rekow  
and the Music of Women's Lives**

Featuring musically varied pieces drawn from classical, popular and Jewish styles. Followed by a wine and chocolate reception.



**Sunday, May 3, 3:30 PM**

Sponsorships for this amazing event start at just \$100, or feel free to come and make a donation at the door (suggested donation is \$20). 100% of all donations to benefit Temple Beth El programs. A wine and chocolate reception will follow.

**COMING TO WATSONVILLE IN 2020!**



1266 Soquel Ave., Santa Cruz • 831-423-8632  
[www.staffoflifemarket.com](http://www.staffoflifemarket.com)



# Activities & Events

## Whole Food Plant-Based Nutrition

with Dr. Elise Atkins

Wednesday, March 18, 7:00-9:00 PM



at the home of  
Suzanne and  
David  
Silvergate

If you are interested in taking steps to prevent diabetes, heart disease, and cancer, or in gaining control over chronic diseases you already have, then whole food plant-based nutrition may be just the tool you're looking for. In addition to better health, plant-based eating benefits our planet. Join Dr. Elise Atkins for an evening of discussion about the why and how of using food as medicine.

## An Israeli and Palestinian/Jordanian Tell Their Stories

with Muna Alsheikh, M.Ed.  
and Shlomit Manneberg



Tuesday, March 31  
7:00-9:00 PM

Shlomit and Muna will talk about growing up in the Middle East amidst the agonies of war and the political and religious divide in the area, learning fear and judgment of each other. They come together to call for conscious and humanitarian actions to overcome hatred and enmity through open mindedness and heartfulness. They invite us to join them in a timely conversation about developing empathy, understanding, and respect for all human rights, and coexisting in peace.



## Chevra Kadisha Training

March 22, 11:00 AM-1:00 PM and  
2:00-4:00 PM, at TBE

This all-day class offers training in Sh'mira and Taharah, both for those interested in becoming volunteers, and for those who want to learn about these traditional Jewish rituals that honor the deceased and prepare them for burial. The morning session is informational and open to the community. We will break for a potluck lunch and table conversations. The afternoon session includes a Taharah demonstration for those considering joining the Chevra Kadisha. For reservations or more information, please contact:  
[chevrakadishasantacruz@gmail.com](mailto:chevrakadishasantacruz@gmail.com).



Interfaith Seder with Resurrection  
Catholic Church  
Thursday, April 2, 6:00 PM

Second Night TBE Community Seder  
Thursday, April 9, 6:00 PM

Senior Connections Presents:  
Rabbi Shifra and Friends Celebrate  
Jewish Music  
Monday, April 13, 1:30 PM

Rock Shabbat  
Friday, April 17, 7:30 PM

Mitzvah Day  
Sunday, April 19, 9:00 PM

Challah Making  
Thursday, April 23, 3:30 PM

Santa Cruz Jewish Film Festival  
Opening Night Reception  
Saturday April 25

Santa Cruz Jewish Film Festival  
Saturday, April 25 to Thursday, April 30

## BROTHERHOOD BRUNCH

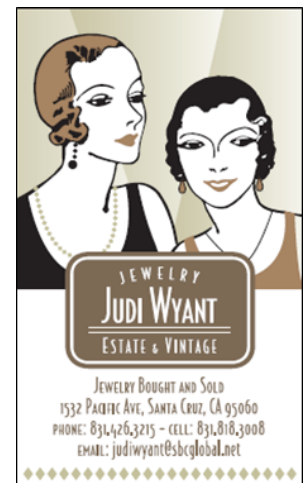
### New Initiatives at Cabrillo College

With speakers:  
Cabrillo Trustee  
Adam Spicker and  
President Matthew  
Wetstein

Sunday March 29  
10:00 AM




Cabrillo College, our next-door neighbor, is an academic jewel of our county. As a community college, Cabrillo serves current high school students, high school graduates, re-entry students, and offers an impressive array of practical courses tailored to the needs of Santa Cruz's diverse population. On the horizon, Cabrillo administrators are looking at new initiatives to reduce the burden of tuition, deal with housing insecurity, streamline academic placement, enhance professional development, and modernize facilities. Beginning at 10:00 AM, we'll enjoy our always delicious lox and bagel brunch, take care of a little Brotherhood business, followed by our speakers' presentation at 11:00, concluding before noon. Recommended donation is \$5 for Brotherhood members and \$7 for non-members.



# March 2020

## Temple Beth El Jewish Community Center • Adar–Nissan 5780

All events are subject to change. Please check the Temple website. [www.tbeaptos.org](http://www.tbeaptos.org) or call the office at 831-479-3444 to verify information.

SUNDAY	MONDAY	TUESDAY	WEDNESDAY	THURSDAY	FRIDAY	SATURDAY
<b>1</b> Temple School Grades K–6 9:45am Judaism as a Spiritual Journey 12:30pm Under the Tent of Abraham—One Earth, Many People, One Family 2:00pm (out)	<b>2</b>	<b>3</b> Pilates Class 10:00am Mah Jong 12:00pm Caregiver Support Group 7:00pm Jewish Meditation 7:00pm	<b>4</b> Women's Writing Group 10:15am Chair Yoga 12:30pm Temple School Grades 4–6, KEF and Hebrew 4:00pm 7th Grade & Hebrew High 6:30pm Craft Group 7:00pm	<b>5</b> Pilates Class 10:00am Lunch & Learn 12:00pm Library Staffed 3:00pm White Fragility Book Group 7:00pm Women's Song Circle 7:00pm	<b>6</b> Scholar-in-Residence Shabbaton Erev Shabbat Service 7:30pm  5:51pm	<b>7</b> Yarbrough Bar Mitzvah (Tetzaveh) 10:00am Scholar-in-Residence Havdallah and Story Telling 7:00pm (out)
<b>8</b> Purim Carnival and Celebration 9:45am Judaism as a Spiritual Journey 12:30pm	<b>9</b> Senior Connections 1:30pm Megillah Reading and Purim Party 7:00pm	<b>10</b> Pilates Class 10:00am Mah Jong 12:00pm Jewish Meditation 7:00pm Tijuana 'Nest' Presentation 7:00pm	<b>11</b> Women's Writing Group 10:15am Chair Yoga 12:30pm Simcha Preschool Pizza My Heart Fundraiser 4:00–9:00pm (out) Temple School Grades 4–6, KEF and Hebrew 4:00pm 7th Grade & Hebrew High 6:30pm Craft Group 7:00pm	<b>12</b> Pilates Class 10:00am Lunch & Learn 12:00pm Library Staffed 3:00pm White Fragility Book Group 7:00pm	<b>13</b> Confirmation Shabbat Service 7:30pm  6:58pm	<b>14</b> ShabbASANA Yoga 10:00am Mendivil Bat Mitzvah (Ki Tisa) 10:00am
<b>15</b> Mazel Tots 9:45am Temple School Grades K–6 with First Grade Parent Participation 9:45am Judaism as a Spiritual Journey 12:30pm	<b>16</b>	<b>17</b> Pilates Class 10:00am Mah Jong 12:00pm Caregiver Support Group 7:00pm Jewish Meditation 7:00pm Interfaith Easter/Passover Dialog 7:00pm	<b>18</b> Women's Writing Group 10:15am Chair Yoga 12:30pm Temple School Grades 4–6, KEF and Hebrew 4:00pm Confirmation Rehearsal 6:00pm 7th Grade & Hebrew High 6:30pm Craft Group 7:00pm Whole Foods Plant-Based Nutrition 7:00pm	<b>19</b> Pilates Class 10:00am Lunch & Learn 12:00pm Library Staffed 3:00pm White Fragility Book Group 7:00pm	<b>20</b> Rock Shabbat Service 7:30pm  7:04 NFTY Spring Conclave	<b>21</b> Shabbat Morning Service with CY (vayakhel-Pekudei) 10:00am NFTY Spring Conclave
<b>22</b> Temple School Grades K–6 with Second Grade Parent Participation 9:45am Chevra Kadisha Morning Training 11:00am Judaism as a Spiritual Journey 12:30pm Passover Preparation and Family Fun 1:00pm Chevra Kadisha Afternoon Training 2:00pm	<b>23</b> Beth El Baby Bunch 11:00am Senior Connections 1:30pm	<b>24</b> Pilates Class 10:00am Mah Jong 12:00pm Jewish Meditation 7:00pm Board Meeting 7:00pm	<b>25</b> Women's Writing Group 10:15am Chair Yoga 12:30pm Temple School Grades 4–6, KEF and Hebrew 4:00pm 7th Grade & Hebrew High 6:30pm Craft Group 7:00pm	<b>26</b> Pilates Class 10:00am Lunch & Learn 12:00pm Library Staffed 3:00pm Rosh Hodesh Women's Seder 5:00pm (out)	<b>27</b> Erev Shabbat Service 7:30pm  7:11pm	<b>28</b> Shabbat Morning Service (Vayikra) with Rabbi Lori 10:00am
<b>29</b> Gift Shop Open 9:30am–12:00pm Temple School Grades K–6 9:45am Brotherhood Brunch 10:00am Judaism as a Spiritual Journey 12:30pm	<b>30</b> Gift Shop Open 10:00am–4:00pm Senior Connections 1:30pm	<b>31</b> Gift Shop Open 10:00am–4:00pm Pilates Class 10:00am Mah Jong 12:00pm Jewish Meditation 7:00pm An Israeli and Palestinian Tell Their Stories 7:00pm				



# Young Families and Youth

## Mazel Tots

Sunday, March 15  
9:45 to 11:15 AM  
at Temple Beth El

Join in fun Purim-themed activities for children five years and under with their families. Members and non-members welcome. Free. Please bring a healthy snack.

## Simcha Preschool

Spring is bringing new learning at Simcha Preschool. Friendships are blossoming among even our youngest children in the toddler classroom. The preschool children love playing together as a large group. The Pre-K children are creating a “kindness wall,” learning how to be more inclusive, and expand their groups of friends.

We would like to welcome new preschool teacher, Jan Wald-Viera, who has three decades of experience in early childhood education with a passion in science, math, and art for young children. She will join seasoned preschool co-teacher Lori Grantham in the preschool classroom for 3-to-4-year-olds. They have already had a warm, positive, and constructive “meeting of the minds” about curriculum planning and their classroom environment.

We are looking forward to our Monday, March 30, Simcha Seder lunch,

## Beth El Baby Bunch

Monday, March 23, 11:00 AM–12:30 PM



Quality social time with parents and babies birth to age 3, here in the TBE coffee lounge. Questions? Contact Sarah at [sclarkson@tbeaptos.org](mailto:sclarkson@tbeaptos.org).

with Rabbi Shifra facilitating the Passover ritual aspects of the meal. Simcha parents, extended family and friends, are invited to join us at 12:00 Noon for a community meal.

On March 11, from 4:00–9:00 PM, please be sure to mention “*Simcha Preschool*” at Pizza My Heart on 41st Avenue in Capitola, and our thriving, play-based preschool will receive 30% of the proceeds from your purchase.

And finally, we’re excited to announce that we’re opening a new program in Room 6 this fall. If you or someone you know has a child turning five years-old in July–January 2020, and are interested in a play-based Transitional Kindergarten (TK) program with kindergarten-readiness academics, please have them contact Director Lisa Mendez at [lmendez@tbeaptos.org](mailto:lmendez@tbeaptos.org) or 831-479-3449.

–Lisa Mendez, Director

## Temple School, Hebrew High & Young Families Program Calendar

Sunday, March 1

TS Grades K–6

Wednesday, March 4

TS grades 4–6, KEF, Hebrew, 7th Grade and Hebrew High, 6:30 PM Pizza

Sunday, March 8

Purim—see the front cover for details

Monday, March 9

Purim Celebration

Wednesday, March 11

TS grades 4–6, KEF, Hebrew, 7th Grade and Hebrew High, 6:30 PM Pizza

Friday, March 13

Confirmation

Sunday, March 15

TS Grades K–6, First Grade Parent Participation, Mazel Tots

Wednesday, March 18

TS grades 4–6, KEF, Hebrew, 7th Grade and Hebrew High, 6:30 PM Pizza

Friday, March 20

Rock Shabbat

Friday to Sunday, March 20 to 22

NFTY CWR Spring Conclave for 9th–12 Grades

Sunday, March 22

TS Grades K–6, Second Grade Parent Participation, Passover Preparation and Family Fun

Wednesday, March 25

TS grades 4–6, KEF, Hebrew, Passover Model Seder, 7th Grade and Hebrew High, 6:30 PM Pizza

Sunday, March 29

TS Grades K–6



## Morgan Stanley

### The Wedeen Hammer Group at Morgan Stanley

Rachel Wedeen, CFP®

Executive Director  
Financial Advisor

Tiffany Hammer, CFP®

First Vice President  
Financial Advisor

6004 La Madrona Drive | Santa Cruz, CA 95060

831-440-5200 • 800-488-3436

[fa.morganstanley.com/wedeenhammergroup](http://fa.morganstanley.com/wedeenhammergroup)

© 2018 Morgan Stanley Smith Barney LLC. Member SIPC.  
BC006 CRC2176129 07/18

Save the dates April 25-April 30  
for the 2020  
**Santa Cruz Jewish  
Film Festival!**



Opening Night at TBE—schmooze, nosh, buy some raffle tickets, and enjoy films with friends and fellow film lovers. Nu, what could be more fun? Be a Film Festival donor! Sponsor or co-sponsor a film! The Film Festival needs your generous support. Log onto the TBE website, [www.thetbeaptos.org](http://www.thetbeaptos.org), for donor levels or to donate online. Checks can be made out to and mailed to TBE with a note in the memo section marked for the Film Festival. Contact Marcia Meyer at [marmey26@comcast.net](mailto:marmey26@comcast.net) if you'd like to be a film sponsor or co-sponsor. Watch for the Film Festival Program in the April Shofar.



**TBE Moves Forward  
with  
TK/K Program!**

For the 2020/2021 school year, Simcha Preschool will be adding a TK/K (Transitional Kindergarten/ Kindergarten) classroom! This new class will create an academic bridge from Pre-K to kindergarten.

Children who would otherwise attend TK or would be a younger kindergartener (July-January five year-old birthdays) are welcome to apply to our new, exciting program.

If you or someone you know may be interested in learning more about Simcha Preschool's new five-day TK/K program, please have them call Lisa Mendez at (831) 479-3449 or email her at [lmendez@tbeaptos.org](mailto:lmendez@tbeaptos.org).