



the shofar

Visit the temple website at www.tbaptos.org

Temple Beth El Jewish Community Center, Aptos, California ☆ Vol. 52, No 2
October 2018 ☆ Tishrei–Cheshvan 5779

Israel and Jewish Women's Poetry

with Murray Baumgarten
Sunday, October 7, 7:00-9:00 PM
at the home of Shmuel Thaler & Kathy Cytron

Jewish women writers have contributed mightily to Zionism and Israeli poetry, beginning with the prophet Deborah and including such greats as Naomi Shemer, the author of *Jerusalem of Gold*. At this salon, we will read and discuss poems by such Jewish poets as Rachel, Lea Goldberg, Zelda and Agi Mishol. Copies of the poems will be available prior to the salon.



Simchat Torah Temple School Family Service Kindergarten Consecration

Friday October 5, 6:30 PM

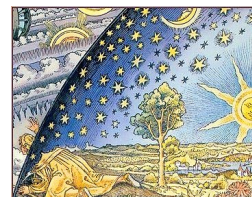


Don't miss this year's Simchat Torah celebration at TBE! We will begin in the sanctuary at 6:30 PM, honoring our kindergarteners as they begin what we hope will be 11 wonderful years of Jewish exploration with Temple School. This is very moving for us because we get to envision them growing up to be the confident and brilliant 10th grade students presenting at confirmation, the other bookend of Temple School. After the service we move into the Social Hall where together we unroll the whole Torah in a huge circle so that we have the unique opportunity to see the Torah's entire glorious cycle. With our own variation of the joyous Simchat Torah traditional *hakafot*, the whole congregation will dance around with the Torah accompanied by Israeli dance teacher Ilana Goldstein. Sleepy children (and adults) may leave early, but those who stay will *nosh* (snack) and *schmooz* (chat) together as we wrap up the celebration with a delicious oneg.

Jewish Mysticism

with Rabbi Shifra Weiss-Penzias
Mondays, October 8, 15 & 22, 7:30–8:30 PM.

Join us for an exploration of the ancient Jewish mystical tradition and how it can address our lives and our world. Please purchase Arthur Green's *Ehyeh: A Kabbalah for Tomorrow*.



Mazel Tots



Sunday, October 14
9:45 to 11:15 AM
at Temple Beth El

Mazel Tots is fun activities for children five years and under with their families. Members and non-members welcome. Free. Bring a healthy snack



Lifelong Learning Fall 2018

Make this fall a time of Jewish discovery. Temple Beth El is offering a wide range of learning opportunities as part of our Lifelong Learners program. Expand your Jewish knowledge with classes in Torah study, Talmud, Jewish spiritual practice and mysticism. Explore Jewish meditation or experience the rhythms of Middle Eastern hand drumming. Join a parenting class or learn about connecting with family members about difficult decisions. Participate in an evening salon or attend one of our classes on a variety of topics. Check out the Lifelong Learning brochure online at <http://tbaptos.org/> or pick up a copy in the TBE lobby.

Rock Shabbat



October 26, 7:30 PM

Spiritual, Mystical, Musical
Sponsored by Ray and Jenny Kaupp and David and Helen Resneck-Sannes

COME ON WEDNESDAY EVENINGS—THERE IS ALWAYS SOMETHING INTERESTING TO DO!

Spirituality/General News

THOUGHTS FROM RABBI PAULA



Rabbi Paula

SIMCHAT TORAH ENDINGS AND BEGINNINGS

Why is it that endings are often sad and beginnings sometimes scary? I think it's natural to feel a sense of

loss when good things come to an end. A child leaving home for college, retirement from a rewarding career, relocating across the country to be closer to our family. These changes are hard.

While we may rejoice when new opportunities come our way, we may feel anxious contemplating change—a new relationship, moving into a new living situation. To embrace the new, we often need to find a way to honor what is ending.

Reading the last few chapters of the Torah, as Moses gives his last words to the people, is a moving experience. Moshe Rabeynu—Moses, our teacher is about to die, he's not making it into the Promised Land.

Tradition teaches that Moses was the Torah transcriber; when he died, it was the end of an era.

And on Simchat Torah, we celebrate endings and beginnings. We read the last few verses, describing the end of his life. With a brief pause, we return to the first verses—to the creation of new possibilities.

Every year we enter a new era as well. We live from Rosh Hashanah to Rosh Hashanah starting each year anew. Each year we extend to each other New Year's greetings with the hope that the coming era will bring good health, success and fulfillment.

The five books of the Torah review the creation and development of the world from Breishit—the beginning of year one—until the day of Moses' death in the year 2488.

Endings create new possibilities. As we begin this new cycle of Torah, may we mark our endings and beginnings with hope and faith. May we truly know that we have the ability to embrace what is ending and welcome the freedom and possibility found in a new beginning.

—Rabbi Paula Marcus

Affordable Housing

TBE organized to put an affordable housing bond on the November ballot. Did you know that Santa Cruz County is the least affordable housing market in the whole country? Seniors, disabled neighbors, veterans, teachers, including our own members and children, are priced out of stable housing availability. 88% of residents of our county agree that there is a crisis in affordability.

The TBE Board and leadership urged the county Board of Supervisors to put Measure H, an affordable housing bond, on the November ballot. In particular, TBE members joined a group from COPA to successfully persuade Supervisor Caputo to support this effort. In the end, it was a unanimous 5-0 vote!

If passed, Measure H will raise \$140 million for carefully selected housing

opportunities throughout the county, including rental and first time homebuyer assistance, homeless support and targeted opportunities. This measure requires a 2/3 vote to pass, so this is a high priority issue for us in this election cycle. For more information contact Andrew Goldenkranz at agoldenk@gmail.com or 588-8262.



Rosh Hodesh Cheshvon

Tuesday October 9, 7:00 PM



Going into the dark months in our hemisphere and just coming out of High Holidays where we searched our souls, it is only right that we explore what we are rooted to as individuals. Where does our personal resiliency lie? Join the Rosh Chodesh women on October 9, in the temple Library for stories, ritual and community—facilitated by Gaby Litsky.

Sh'mini Atzeret Service with Yizkor

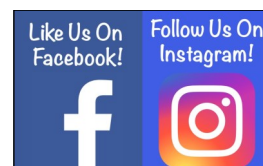
Monday, October 1, 10:00 AM



We will join Chadesih Yameinu at their space in the Galleria, 710 Front St., # 170, Santa Cruz.

Fossil Free Electrical Grid

TBE members, led by Bob Kibrick, were instrumental in passing SB 100, which puts California on the path to a 100% fossil free electrical grid. A large group of our members met with Assembly Member Mark Stone and convinced him to be a co-author. The votes in the Assembly were very close right up until the last minute, so this was a good lesson that every minute and every vote counts! Our faith teaches us to sustain the earth from generation to generation and this is a big step forward.



Synagogue News

A NOTE FROM OUR PRESIDENT



Amy Harrington

I hope everyone had a nourishing and renewing New Year and that you found meaning in your High Holiday participation, as we offered many spiritual options for our congregants this year.

The temple board had a very productive and energizing retreat on August 26th. We were quite fortunate to have a skilled leadership trainer guide us, and even more blessed that she actually grew up in this temple—my daughter, Erin-Kate Escobar! She was as honored to facilitate our board retreat as we were to have her. Rabbi Paula, Esther, Erin-Kate and myself laid the framework for our day-long workshop by focusing on our commitments, core Jewish values and our personal and group goals for the upcoming year. After outlining many of the things that are going quite well within our community, we began the

arduous task of also looking at those areas in need of improvement. Through further review, we discovered that each of our concerns tied back to three major categories. Therefore, our focus areas for growth throughout this upcoming year will be: communication, engagement and philanthropy, which are all integrally connected. Our goal is to keep you informed as we work toward integrating great ideas from board members, congregants and staff into action. Specifically in the area of communication, I will be available for schmoozing and idea-gathering on the first Wednesday of each month in the new coffee lounge from 7:00 to 8:00 PM. I look forward to meeting some of you and getting to know others better, hearing your suggestions and feedback and inevitably making our community even stronger!

Also, we are fortunate to have a wonderful committee, led by Robyn Slater and Esther Herst, focused on recruiting and selecting a new permanent Executive Director. The goal is to have our new ED in place by late

November.

Thank you to everyone who helped make our High Holidays such a success. I wish you all a year of good health and of finding a true home for yourself and your family here at Temple Beth El. I am honored to be your board President. It is a pleasure to work with two wonderfully devoted Rabbis, excellent TBE staff and truly committed board members!

—Hope to see you in the Sukkah this month, Amy Katzenstein-Harrington



Board Retreat

News from the TBE Green Team



The Green Team is moving forward.

- ◆ Members Marilyn Rigler and Robert Morgan researched and drafted waste management and recycling procedures for TBE. This will be discussed by the Green Team and presented to temple administration.
- ◆ Marilyn Rigler organized carpooling for High Holiday services.
- ◆ The Green Team encouraged congregants to advocate for the passage of SB 100 (which establishes a goal of 100% carbon-free electricity in California by 2045) and SB 834 (to inhibit new offshore oil leases in

Federal waters by prohibiting development of supporting infrastructure in State waters). Both bills passed the legislature in late August. Thanks to Robert Kibrick and Andrew Goldenkranz for their lobbying efforts in Sacramento.

- ◆ At the Green Team and Social Action Committees recommendation, the TBE board sent a letter to the Santa Cruz City Council endorsing the proposed EcoPass program to encourage those who work downtown to commute by public transit instead of single-occupancy vehicles.

NOVEMBER 2018 SHOFAR DEADLINES

Articles are due October 3. Advertising deadline is October 5. Email text or advertising questions to mstein@tbeaptos.org or call (831) 460-1389. The Shofar is published September–June by Temple Beth El Jewish Community Center, 3055 Porter Gulch Road, Aptos, CA 95003. Phone (831) 479-3444, fax (831) 475-7246. A TBE membership benefit. Non-member subscription rate is \$40/year. Vol. 52, No. 2. Marcia Stein, Editor/Publisher.

In The Temple Family

July & August



NEW MEMBERS

Julian Dahan & Jessica Guild
Dafna & Yosi Mizrahi
Landon Gottlieb & Aubrey Duenes
Deborah Debruyn
Edward & Ann Lipson
Lee Slaff
Marvis & Andrew Ring
Allison & Jacob Pearl

MAY THEIR MEMORIES BE FOR A BLESSING



Alvin Skuro, uncle of Judi Sherman and Rachel Bickert
Jeanne Ballard, aunt of Rabbi Paula

Youth

TEMPLE SCHOOL NEWS



Rabbi Shifra

Temple School fosters a love of Jewish learning in a joyful, engaging and supportive community.

As I write this, we are still preparing for the beginning of Temple School. As always, we are planning some new experiments. Our annual Simchat Torah celebration is a great example of this, so please come on Friday, October 5th, at 6:30 PM, when the rising b'nai mitzvah class will stand in front of their Torah portion in the open Torah and demonstrate how their Torah portion fits in to the whole. Simchat Torah at TBE is always an energetic celebration of Torah, kids and community. In contrast to the solemnity of the High Holidays, Simchat

Torah has dancing and levity, symbolizing the sweetness and joy of Torah and new beginnings.

Please check your emails for information about upcoming parent participation sessions, field trips and opportunities for parents to learn and meet other families at Temple School. If your child has special needs, please come in and talk with me so together we can craft a plan that will help them succeed. There are all kinds of learners and I am committed to working with every Jewish child who comes to us. The Temple School staff and I look forward to a great year with you and your kids.

—Blessings, *Rabbi Shifra Weiss-Penzias*

Jewish Parenting for Parents of Young Children

with Rabbi Paula Marcus
Sundays, October 14–November 4
10:00–11:30 AM

Would you like to be in conversation with other parents of young and school-age children about the joys and challenges of parenting? Please join us as we continue discussing the book, *Nurture the Wow: Finding Spirituality in the Frustration, Boredom, Tears, Poop, Desperation, and Radical Amazement of Parenting* by Rabbi Danya Ruttenberg.

Parenting Jewish Teens

with Rabbi Paula Marcus
Wednesdays, October 3–24
7:45–8:45 PM

This Jewish Parenting Group will focus on teens. The suggested reading for the class is *Parenting Jewish Teens: A Guide for the Perplexed* by Joanne Doades. Drawing upon the teachings, insights and wisdom of our people, this guidebook will help us navigate the journey of parenting a Jewish teen into adulthood while asking—and answering—important questions.

Simcha Preschool Autumn Greetings

Simcha Preschool's 2018/2019 school year is underway and I want to welcome returning and new families to our program. Our annual August in-service week had us painting with local fine artist Yeshe Jackson, laughing together with laughter yoga teacher Carla H. Brown, and learning about our new PJ Goes to School curriculum (thanks to Sarah Clarkson).

We celebrated Teacher Grace's 10-year Simcha-versary in August, honored the High Holidays and Sukkot in September, and are ready for the pumpkins and costumes that October brings.

Please "like" and stay tuned to the Simcha Preschool Facebook page at www.facebook.com/SimchaPreschool on which we will feature each of our

dedicated teachers and the Simcha children's learning and explorations.

—Lisa Mendez, Director



TEMPLE SCHOOL, HEBREW HIGH & YOUNG FAMILIES PROGRAM CALENDAR

Wednesday, October 3

1st Wednesday for TS Grades 4–6, KEF, Hebrew, 7th Grade & Hebrew High, Jewish Parenting Group for Parents of Teens

Friday, October 5

Simchat Torah, Temple School Family Service & Kindergarten Consecration

Sunday, October 7

First Day of TS at TBE, Grades K–6, Tea with Rabbi Shifra

Wednesday, October 10

TS grades 4–6, KEF, Hebrew, 7th Grade & Hebrew High, Jewish Parenting Group for Parents of Teens

Sunday, October 14

TS Grades Grades K–6, Mazel Tots, Introduction to Jewish Parenting Group

Thursday, October 18

Challah Making at New Leaf West Side

Wednesday, October 17

TS grades 4–6, KEF, Hebrew, 7th Grade & Hebrew High, Jewish Parenting Group for Parents of Teens

Sunday, October 21

TS Grades Grades K–6, Jewish Parenting Group, Brotherhood Brunch

Wednesday, October 24

TS grades 4–6, KEF, Hebrew, 7th Grade & Hebrew High, Jewish Parenting Group for Parents of Teens

Friday, October 26

Rock Shabbat

Sunday, October 28

TS grades K–6, Kindergarten Parent Participation, Jewish Parenting Group

Wednesday, October 31

No Temple School, 7th Grade or Hebrew High



Challah Making

Thursday, October 18, 3:30 PM
New Leaf Market West Side
1101 Fair Ave., Santa Cruz

Make challah with Temple Beth El's Young Families Project. We will have all the ingredients and the recipe! Take home the dough to bake, the simple one bowl recipe and a little challah to enjoy. The kitchen is at the back left corner of New Leaf. Bring your little chef(s) and the Shabbat spirit! RSVP's to Sarah are helpful sclarkson@tbeaptos.org.

Calendar Highlights

Brotherhood Brunch

Sunday, October 21, 10:00 AM

Speaker: Santa Cruz County
Sheriff Jim Hart

*Dealing with County-Wide Crime
Trends, Gun Violence and Issues of
Mental Health*

Santa Cruz County stretches from the solitude of Big Basin, through the burbs of Scotts Valley and Santa Cruz, to the rich farm fields of Watsonville. Our surroundings are beautiful and our populations are diverse, thereby fostering vibrant and engaged communities. Despite the beauty and energy of Santa Cruz County, we face significant problems: pockets of crime, gang violence and mental health challenges. Sheriff Jim Hart and his deputies communicate and collaborate openly with community members to address these pressing issues. Of particular current interest is the mental health crisis—its impact on our communities and how to manage calls for service involving troubled individuals. Please join us for our next brunch featuring Sheriff Hart as he presents his vision and approach for dealing with County issues. We'll enjoy our always delicious lox and bagel brunch, take care of a little Brotherhood business, followed by Sheriff Hart's talk. Recommended donation is \$5 for Brotherhood members, \$7 for non-Brotherhood members.



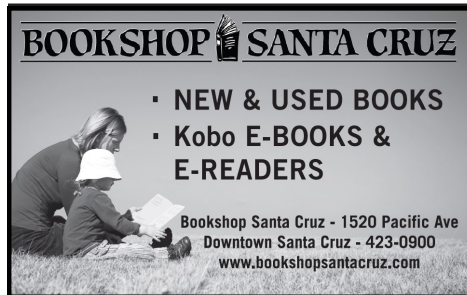
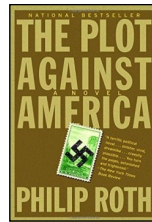
TBE BOOK GROUP

The Plot Against America

by Philip Roth

Tuesday, October 16, 7:30 PM
at the home of Leta and Alan Miller

For our next meeting, we will discuss the Jewish Community Library's One Bay One Book selection, *The Plot Against America* by Philip Roth (z"l). The selection is timely for several reasons, notably the recent passing of Mr. Roth and the current political situation. We try to start our discussion promptly at 7:30 so please arrive a little early so that we can begin on time.



Brotherhood Zooms Over to a Classic Car Museum

Saturday, October 13, 9:00 AM



Did you know there's a world famous exotic car collection right in our backyard? Canepa maintains an automotive nirvana in its 70,000 square foot facility in Scotts Valley. Some of the world's best automotive artisans work to preserve the most important road cars and competition vehicles for generations to come. Canepa's car collection ranges from the first Duesenberg production car to the 1972 Can-Am winning Porsche 917/10. Three times a year Canepa hosts a "Cars and Coffee" event offering FREE tours of the museum and garage. The last one for 2018 is Saturday, October 13, and Brotherhood is going! We'll meet there at 9:00 for coffee and donuts and join the tour at 10:00. These events are open to the public and draw large crowds, so please RSVP to Steve Greenburg at greenburg@sbcglobal.net—Canepa wants to know how many folks we're bringing. You may need to park on side streets off Scotts Valley Dr. if the parking lot is full. Canepa is located at 4900 Scotts Valley Dr. Additional details at <https://canepa.com/canepa-cars-and-coffee-information/>.

REIN & REIN

A PROFESSIONAL LAW CORPORATION

MICHAEL A. REIN • TERESA VIG REIN
LLOYD R. WILLIAMS, OF COUNSEL

REAL ESTATE AND
BUSINESS TRANSACTIONS
www.reinandrein.com

550 Water St., Bldg. H
Santa Cruz, CA 95060

Tel 831.607.8833
Fax 831.607.8832

Morgan Stanley

The Wedeen Hammer Group at Morgan Stanley

Rachel Wedeen, CFP®
Executive Director
Financial Advisor

Tiffany Hammer, CFP®
First Vice President
Financial Advisor

6004 La Madrona Drive | Santa Cruz, CA 95060
831-440-5200 • 800-488-3436
fa.morganstanley.com/wedeenhammergroup

© 2018 Morgan Stanley Smith Barney LLC. Member SIPC.
BC006 CRC2176129 07/18

Calendar Highlights

Senior Connections

Mondays, 1:30 PM, Free

October 8

Ryan Coonerty, 3rd District Supervisor, will discuss current issues concerning our county.



October 22

Erica Lann-Clark and Olga Loya, nationally-known storytellers, perform their original work: *Believe it or Not*

The show is bi-cultural, the performers an intercultural/interfaith combination. The stories they tell challenge assumptions we all make about what is okay to tell others



about ourselves and what others will ridicule and disbelieve. Part of the show involves audience members each turning to a stranger and sharing something true but unbelievable that happened to them.

Song Circle Group for Temple Women

Wednesday, October 17
7:00–9:00 PM

at the home of Judy Yokel

Join us for fun and community building by lifting our voices together in song. We are using the *Rise Up Singing Songbook* (15th Anniversary Edition) as our guide. The focus is on folk, traditional, folk-rock, blues and other types of songs. A love of singing is all that is required! If you play, please bring your guitar, ukelele, mandolin, banjo, hand percussion, or whatever you like to support our singing! Instrumentalists should know the basic chords that are used for most folk-type songs.

Bring your copy of *Rise Up Singing* if you have one. Contact Melissa at msunberg@tbeaptos.org or 479-3444 for the address. We look forward to singing with you!

More calendar highlights on the back cover.



Mazel Tots

Sunday, November 4, 9:45 AM

Brotherhood Brunch

Sunday, November 11, 10:00 AM

Beth El Bim Bam

Friday, November 16, 5:45 PM

Rock Shabbat Service—60 for 60

Friday, November 16, 7:30 PM

bar/bat mitzvahs
birthdays
weddings
celebrations

if it has to be special...

ZENA

(831) 247-7733

Zena@callZena.com

HOW WILL YOU PAY FOR COLLEGE?

STRATEGIES FOR FINANCIAL AID,
SCHOLARSHIPS & OTHER WAYS
TO REDUCE COSTS

STEVE SHAPIRO

Certified Financial Planner®
www.TuitionSolutionsNow.com

831•588•7418

Lifelong Learning

Introduction to Talmud

with Shlomo Vilozny

This class will cover the history and development of the Talmud and its impact on the Jewish way of life. We will also study Talmudic texts that are particularly relevant today. Knowledge of Talmud or Hebrew is not required. Wednesdays, October 3–November 28, 7:00–8:15 PM (no class on October 24).

Kavod Conversations

with Holly Blue Hawkins
and Rose Ashford

How we die is part of our legacy, but few of us have thought about our end-of-life wishes or communicated with our loved ones about this important topic. Your Advance Care Directive is only the beginning. Gain insights and strategies for having the conversations that will help ensure that your wishes for care through the end of life are respected and implemented. Practical help with the documents will also be given. Please check the weekly email for the topic of each session. Co-sponsored with Chadeish Yameinu. October 11, November 8, December 13, January 10, 7:00–8:30 PM.

Judaism as a Spiritual Journey

with Rabbi Shifra Weiss-Penzias

This class explores our people's and our individual spiritual journeys using *A Book of Life* by Michael Strassfeld. Sundays, October 14–December 16, 12:30–1:30 PM (no class November 25).

Letters to My Palestinian Neighbor

with Rabbi Richard Litvak

Letters to My Palestinian Neighbor by Yossi Klein Halevi is one Israeli's powerful attempt to reach beyond the wall that separates Israelis and Palestinians and into the hearts of "the enemy." It is a primer for keeping alive a two-state solution to the Israeli-Palestinian conflict. Tuesday, October 16, 7:00–9:00 PM, at the home of Ziesel Saunders.

The Israeli Soundscape: Then and Now

with Benjamin Brinner, Professor of Music and the Helen Diller Family, Faculty Director of Jewish Studies at UC Berkeley

Addressing the evolution of music in Israel, Professor Brinner will play and discuss examples of some of the more striking musical changes that have transpired in Israel. These include the prominence of Middle Eastern musical instruments, styles and compositions, the spread of religious songs into secular or mixed settings, the impact of Ethiopian Israelis, and the reimagining of classic songs popular before and during Israeli independence. Wednesday, October 24, 7:00–9:00 PM.

Chevra Kaddisha Training

with Rose Ashford

This class offers training in Tahara (ritual purification), both for those wishing to become Tahara volunteers and those interested in learning more about this traditional Jewish ritual that honors the deceased and prepares them for burial. The morning session focuses on Tahara and the liturgy used for the ceremony. The afternoon practicum includes a complete Tahara demonstration. Questions? Contact Rose Ashford at rose@ashfields.net. Cosponsored with Chadeish Yameinu. Held on Sunday, October 28, 11:00 AM–1:00 PM and 2:00–4:00 PM.

INTRODUCTION TO HAND DRUMMING

with Dror Sinai

This class is for beginning drummers and will focus on positioning and basic rhythm techniques used in creating sounds and rhythms on the frame drum, Riq (Middle Eastern tambourine), Doumbek and various sound makers. There is a \$100 fee for this class. Mondays, October 29–November 26, 7:00–8:00 PM.



Debra Sloss, LMFT
Licensed Marriage and Family Therapist

Support for Change
Experienced & Compassionate Counseling

831 426 4800
www.debrasloss.com
Downtown Santa Cruz



- Anxiety
- Depression
- Parenting
- Relationships
- DBT Skills

ATTORNEY AT LAW

MILES J. DOLINGER CALL TODAY
(831) 477-9193
314 Capitola Ave, Capitola, CA

LAND USE • REAL ESTATE • BUSINESS • LITIGATION



**Expertise. Efficiency.
Advocacy. Happy Clients.**


What you can expect when you put
21 years of land use, real estate and
litigation experience on your side.

www.dolingerlaw.com
Serving all of Santa Cruz County and Beyond

October 2018

Temple Beth El Jewish Community Center • Tishrei–Cheshvan 5779

All events are subject to change. Please check the Temple website. www.tbeaptos.org or call the office at 831-479-3444 to verify information.

SUNDAY	MONDAY	TUESDAY	WEDNESDAY	THURSDAY	FRIDAY	SATURDAY
	1 Sh'mini Atzeret Service, Yiskor, at Chadeish Yameinu 10:00am (out)	2 Pilates Class 10:00am Caregiver Support Group 7:00pm Jewish Meditation 7:00pm	3 First Wednesday Temple School Grades 4–6, KEF and Hebrew 4:00pm 7th Grade & Hebrew High 6:30pm Parenting Jewish Teens 7:00pm Introduction to Talmud 7:00pm Reading Hebrew for Beginners 7:30pm	4 Pilates Class 10:00am Library Staffed 3:00pm	5 Simchat Torah & Shabbat Celebration 6:30pm  6:27pm	6 Shabbat Morning Service (B'reishit) 10:00am
7 1st Day Temple School Grades K–6 9:45am Tea with Rabbi Shifra 9:45am Israel & Jewish Women's Poetry 7:00pm	8 Senior Connections 1:30pm Jewish Mysticism 7:00pm	9 Pilates Class 10:00am Jewish Meditation 7:00pm Rosh Hodesh Cheshvan 7:00pm	10 Temple School Grades 4–6, KEF and Hebrew 4:00pm 7th Grade & Hebrew High 6:30pm Parenting Jewish Teens 7:00pm Introduction to Talmud 7:00pm Reading Hebrew for Beginners 7:30pm Craft Group 7:30pm	11 Pilates Class 10:00am Lunch & Learn 12:00pm Library Staffed 3:00pm Kavod Conversations 7:00pm	12 Sisterhood Shabbat Service 7:30pm  6:17pm	13 Brotherhood to Classic Car Museum 9:00am Licht Bat Mitzvah 10:00am ShabaSANA Shabbat Yoga 10:00am Shabbat Service with CY (Noach) 10:00am (out)
14 Temple School Grades K–6 9:45am Mazel Tots 9:45am Jewish Parenting Group 10:00am Judaism as a Spiritual Journey 12:30pm ADHD Symposium 1:00pm	15 Hadassah Program—League of Women Voters 1:30pm Jewish Mysticism 7:00pm	16 Pilates Class 10:00am Jewish Meditation 7:00pm Letters to My Palestinian Neighbor 7:00pm (out)	17 Temple School Grades 4–6, KEF and Hebrew 4:00pm 7th Grade & Hebrew High 6:30pm Parenting Jewish Teens 7:00pm Song Circle for Women 7:00pm (out) Introduction to Talmud 7:00pm Reading Hebrew for Beginners 7:30pm Craft Group 7:30pm	18 Pilates Class 10:00am Lunch & Learn 12:00pm Library Staffed 3:00pm Challah Making 3:30pm (out)	19 Erev Shabbat Service 7:30pm  6:08pm	20 Torah Study with Rabbi Lori 9:00am Wiesner Bat Mitzvah 10:00am Shabbat Morning Service (Lech L'cha) 10:00am
21 Temple School Grades K–6 9:45am Jewish Parenting Group 10:00am Brotherhood Brunch 10:00am	22 Senior Connections 1:30pm Jewish Mysticism 7:00pm	23 Pilates Class 10:00am Jewish Meditation 7:00pm General Board Meeting 7:00pm TBE Book Group 7:30pm (out)	24 Temple School Grades 4–6, KEF and Hebrew 4:00pm 7th Grade & Hebrew High 6:30pm Parenting Jewish Teens 7:00pm The Israeli Soundscape: Then and Now 7:00pm Craft Group 7:30pm	25 Pilates Class 10:00am Lunch & Learn 12:00pm Library Staffed 3:00pm	26 Rock Shabbat Service 7:30pm  5:59pm	27 Shabbat Morning Service (Vayeira) 10:00am
28 Temple School Grades K–6 with Kindergarten Parent participation 9:45am Jewish Parenting Group 10:00am Judaism as a Spiritual Journey 12:30pm Chevra Kaddisha Training 2:00pm	29 Senior Connections 1:30pm	30 Pilates Class 10:00am Jewish Meditation 7:00pm	31 Introduction to Talmud 7:00pm Craft Group 7:30pm No Temple School or Hebrew High			

Contributions *May 1 - June 30*

BROTHERHOOD DONATION

A gift
Ed Newman

BUILDING FUND

In memory of Alan Hendin, my husband
Vicki Hendin

CAMP KAYETZ FUND

Wishing Celia Sifry a speedy recovery
Marilyn Rigler
In honor of our granddaughter Samara Lippman
Jason & Charlene Lash

CARING COMMITTEE FUND

In memory of Hilda Gotliffe
Carmen & Harvey Gotliffe
In memory of Irving Levin, my father
Alan Levin

CHOIR FUND

In honor of Rabbi Rick's 40 years of service to TBE
Alan & Leta Miller
In honor of Jordan Weiss-Penzias
Marilyn Rigler

GARDEN AND PARK FUND

In memory of Adele Mendel on her yahrzeit
Sandy Mendel
In memory of Mia Duquet, whose sweet spirit, bright laugh, and green thumb will be sorely missed
Tegan Speiser

GENERAL MEMBERSHIP SERVICES FUND

A gift
Louise Caraco
For one of our favorite people in the entire world
Joshua Bleier Lurie-Terrell
In honor of Murray's 80th birthday
Tobie R Lurie
In honor of Amy Harrington becoming temple President
Adrienne Swedlove
In honor of Amy Harrington's leadership
Margaret Gordon
In memory of Gail Levine's sister
Adrienne Swedlove

In memory of Mable Hyman
Marilyn & Richard Ferreira
In memory of Robert G. Barr
Harvey Halperin
In memory of Kathy Goldenkranz
Craig Muhlad
In memory of Stanley I. Morstein
Debra & Tony Sloss

GORDON BAR/BAT MITZVAH FUND

In memory of my grandfather Harry Gordon
Michael Scott & Ellen O'Brian

HOME OF PEACE PERPETUAL CARE FUND

In honor of Tamar and Graham's new baby boy
Lorrene Gelb
In memory of Joel Alexander
Michael & Toby Alexander

JANET ROTHCHILD ROCK SHABBAT FUND

A gift
Robert Katz & Leola Lapides
Judy Wyant



Open House

October 28 / 11:00 am



- **Preschool – 12th grade**
- CAIS & WASC accredited
- Nonsectarian
- Independent, nonprofit school – **celebrating 40 years!**
- 355-acre campus among a redwood forest and hilltop meadows
- Bus transportation available



**MOUNT
MADONNA
SCHOOL**

408-847-2717

MountMadonnaSchool.org

Contributions *May 1 - June 30*

Amy & David Harrington
Bettina Aptheker
Robert & Michele Kibrick
Lauren Suhd & Wally Brondstatter
Marilyn Rigler
Debra & Tony Sloss
Stephanie Barnes-Castro & Pedro Castro
John Leopold & Teresa Buika Leopold
Cary & Melissa Sunberg
Shmuel Thaler & Kathy Cytron
Bill Underwood & Karen Zelin
Andrew Goldenkranz
Carolyn & Curt Coleman
Jenny & Ray Kaupp
In memory of Isaac Edelstein and Rozia Stoltzenberg
Scott & Kerry Edelstein
In memory of Janet Rothchild
George Ow & Gail Michaelis-Ow
In memory of Robin Winburn
Rose Ashford

LIBRARY FUND

A gift
John & Merry Oppenheimer
In memory of my beloved son Vincent
Lovene Wood
In memory of my beloved husband
Martin
Miriam Rappaport

MINYAN FUND

In memory of Bertha Fox
Harvey & Carmen Gotliffe

ONEG FUND

A gift
Sandy Mendel
In loving memory of Sidney
Sonja Aiwohi

RABBI LITVAK DISCRETIONARY FUND

In memory of Sidney Leving
Larry & Diane Levin
In memory of my beloved husband
Martin
Miriam Rappaport

RABBI MARCUS DISCRETIONARY FUND

A gift
Estalee Weill
Mark & Judy Brenis
Hannah Good
Jonathan Lubell & Kristin Taylor-Lubell
Thank you Rabbi Paula for your ability to nurture my troubled soul
Paul Frommherz

Gratitude for the work you do
Annie Millar
In appreciation for the funeral service for Gloria Kaplan—beloved grandmother, mother, wife, daughter, aunt, cousin and sister
Kaplan Trust
In honor of my mom. Rabbi Paula, thank you for your kindness and support over the years
Renee Lion & Greg Lendahl
In honor of Jordan Weiss-Penzias' Bar Mitzvah

Shlomo & Miriam Vilozy
In honor of Rabbi Paula Marcus
Estalee Weill
In honor of Rabbi Paula. Thank you so much for making Sophie's Bat Mitzvah service such a warm and special experience
Victoria & Michael Stone
In memory of my beloved husband
Martin

Miriam Rappaport
In memory of Jerome Goldman
Judy Brenis
In memory of Asiea Micinic
Alex Moraru
In memory of Rose M. Fox
Laurel Fox & Donald Potts
In memory of our loving father and grandfather
Priva & Michael Tarbet

RABBI RICK & NANCY LITVAK CULTURAL ACTIVITIES FUND

In memory of David Hilberman dear uncle, artist who created the holiday paintings that hang in the social hall
Bernard & Eleanor Hilberman

RABBI WEISS-PENZIAS DISCRETIONARY FUND

A gift
Paul Frommherz
Jonathan Lubell & Kristin Taylor-Lubell
In appreciation for the Adult B'nai Mitzvah Class
Lawrence & Denise Miller
In honor of Jordan's Bar Mitzvah
David & Cyn Baskin
Susan & Stephen Karon
SENIOR CONNECTIONS FUND
In honor of our Rabbis
Carol Maler
In loving memory of Willy
Sonja Aiwohi

In memory of Libbie Hilberman beloved aunt, former TBE member
Bernard & Eleanor Hilberman
In memory of my beloved husband
Jack
Lorrene Gelb

SIMCHA PRESCHOOL FUND

In honor of our granddaughter Eliana Lippman
Jason & Charlene Lash
In memory of Robert Linzer
Barbara Schatan & Richard Linzer

SISTERHOOD

A gift
Ed Newman

SOCIAL ACTION FUND

In honor of the wedding of Suzie Goldenkranz and Seth Samuels
Amy & David Harrington

TEMPLE SCHOOL SCHOLARSHIPS FUND

In honor of Rabbi Shifra's Judaism as a Spiritual Journey Class
Sara Rigler

TEMPLE SCHOOL VAN

A gift
Dennis Douglass & Shelly Nadelman
-Douglass

YOUTH SRFY/NFTY FUND

In honor of Jordan Karl Weiss-Penzias' Bar Mitzvah
Gilda Zelin
In memory of my husband, Richard Meyer
Marcia Meyer

YOUTH SCHOLARSHIP/CAMPERSHIP FUND

In honor of Jordan Weiss-Penzias' Bar Mitzvah
Gail Levine & Emily Wughalter
In memory of Ralph Sidman's Yahrzeit 7/13/18
Jacob Sidman
In memory of our beloved son Mark Estelle Levine
In memory of Linda Reinberg, Susan's mother
Susan & Barry Giles

YOUTH TO ISRAEL FUND

In memory of Mossy Barss, my brother
Julia & Milton Cornblatt

TEMPLE BETH EL
JEWISH COMMUNITY CENTER
3055 Porter Gulch Road
Aptos, CA 95003

Non-Profit Org.
U.S. POSTAGE
PAID
PERMIT NO. 13
Aptos, CA

GET TO KNOW MARCIA STEIN, because you already know her work! She has been the Communications Specialist at Temple Beth El since 2008, managing the TBE website, producing the monthly Shofar newsletter, Temple Weekly and Got Shabbat emails. She also creates flyers and brochures.

Marcia's early career was in childcare, first as the lead Teacher/Director of Capitola After School Day Care Center and then as Executive Director. She has also served as Director of the Santa Cruz County and San Benito County units of the American Heart Association, directed the Santa Cruz County American Cancer Society and ran two different anti-tobacco education programs. Marcia was also the Coordinator of Triangle Speakers and the first Executive Director of Survivor's Healing Center. Now, along with her work for the temple, Marcia is a companion/personal assistant to two gentlemen.

Originally from Detroit, Michigan, Marcia has lived in Santa Cruz for 45 years. She is passionate about Jazzercise, movies and sushi. And she is also an avid and expert beader. She creates beautiful beaded jewelry, bead embellished fabric wall hangings and sculptures.



Free Craft Classes

Wednesday evenings starting on October 10

7:30–9:00 PM

in our new coffee lounge



Craft classes for whomever wants to join us for creativity and fun. Let your inner child come out and play! We'll have sewing and embroidery with a variety of fabrics and thread colors. Create colorful clay amulets, embellish them with a variety of beads, bake and string them for wearing. There will be rock painting and more. Crafts change weekly. Whether you're a beginner or advanced, come and join us for crafting and fun every Wednesday evening in the coffee lounge. Lenore Hindin will facilitate these classes with all materials included, free of charge.

Thriving with ADHD

Symposium for Families & Individuals
Living with ADHD

Sunday, October 14

1:00–6:00 PM, at Temple Beth El



The keynote speaker will be Laurie Dupar, creator of the ADHD Awareness Book Project: The Gifts of ADHD. Including interactive breakout sessions with experts in the ADHD field. For more information go to ADHDSymposium.com.

Senior Rabbi Paula Marcus • Associate Rabbi Shifra Weiss-Penzias
Board President Amy Harrington • Interim Executive Director Esther Herst • Membership
Experience & Program Manager Melissa Sunberg • Shofar Editor/Publisher Marcia Stein