



the shofar



Temple Beth El Jewish Community Center, Aptos, California ☆ Vol. 50, No 5
March 2017 ☆ Adar-Nisan 5777



Celebrate Purim!

Saturday, March 11

7:00 PM in the TBE sanctuary

*All in the Family—The Gantza Mishpacha
TBE & Chadeish Yameinu
Celebrate Purim*

This year we're inviting guests to come in costume as a real or fictional family member. Uncle Mordie and shayna punim (beautiful) Esther are two of our heros in the Purim story. Rabbis Paula, Eli and Lori will be dressed as their favorite family members—whose identity will only be revealed at the celebration.

Please join us at 7:00 PM at Temple Beth El for a Purim spiel (play) by the TBE's 5th and 6th grade KEF theater group, our annual hilarious Megillah reading, and a Purim bash starting sometime around 9:00—filled with hamantaschen and other refreshments. It is always a ton of fun for all ages, please join us!



Beth El Bim Bam



Please join us
for our Shabbat program
for families with children of all ages
Friday, March 17 at TBE

5:45 PM

Vegetarian family potluck Shabbat singing dinner

6:30 PM

Fabulous engaging Shabbat activities for all ages

- Family story time
- Child-friendly hands-on Jewish activities
- PJ Our Way (ages 9-11) activities included

Meet and schmooze with other Jewish families with young children at this fun community Shabbat event.

Potlucks at TBE are kosher style. We do not serve meat and milk together and we don't serve pork or shellfish. The program is free and open to the public. Please RSVP to Sarah Clarkson sclarkson@tbeaptos.org to save your place at dinner.

A special thank you to PJ Library www.pjlibrary.org

Children's Purim Celebration



Megillah Reading,
Costume Parade &
Purim Carnival

Sunday, March 12

Grades K-3 and Young Families

Parent(s) MUST accompany their children

9:45 AM - Megillah reading & costume parade

10:30 AM - Carnival games & prizes

Grades 4-6

9:45 AM - Classroom activity

11:00 AM - Megillah reading & costume parade

11:30 AM with parent(s) - carnival games & prizes

**Please sponsor the Purim Carnival
to support our SRFY Youth Group.**

Carnival sponsor \$50

Game sponsor \$136

Advertise in the Shofar!

Advertisers are needed so that we can continue to produce 10 full issues of the Shofar each year. Place an ad and/or get a friend or business associate to advertise in the Shofar. We print 575 copies, many of which are read by more than one person—cover to cover!

For rate information contact Marcia Stein at mstein@tbeaptos.org or (831) 460-1389.

Interfaith Passover Study

Thursday, March 23

4:00 PM

Join us for our Annual Interfaith Passover Study with Rabbi Paula and Deacon Patrick Conway. We will meet at TBE.

Rock Shabbat

Friday, March 17

7:30 PM



*Sponsored by the Tuttle, Gold,
Wolfe and Selman-Ptak families.*

Spirituality/Recognition

THOUGHTS FROM RABBI PAULA



Rabbi Paula

How Are You?

One thing I love about the Hebrew language is that it is multi-vocal—words can have many layers of meaning. When we study Torah we bring various English

translations of the text to the table because each of them highlights a different nuance of the text. Hebrew words often invoke different feelings, intents and emotions.

This is especially true of the Hebrew word shalom. We all know that this is the word for hello, good-bye and peace. But it's also the word used when we greet a friend by saying "ma sh'lomech" or "ma sh'lom'cha." We usually translate this as "how are you?" But when we take a deeper look at this we realize there is a much deeper aspect of this greeting.

While shalom does mean peace, it means much more. According to *Strong's Concordance*, a primary source for understanding Biblical Hebrew, shalom means completeness, wholeness, health, peace, welfare, safety, soundness, tranquility, prosperity, fullness, rest, and harmony. So shalom isn't just about no war or fighting. It's about a state of being.

Now, more than ever, we can take this lesson from Hebrew and ask each other, "ma sh'lomech—how is your shalom?" Are you whole, or are you lacking in some way? And if I'm not feeling this sense of wholeness, how can I regain my balance? We each have it within our power to appreciate our blessings and recognize all we have to be thankful for. That sense of completeness leads to a feeling of being whole and at peace which in turn can increase lovingkindness in our daily interactions and in our world.

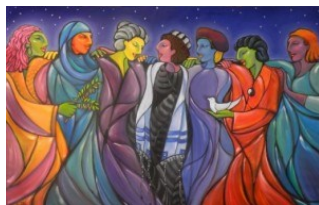
Like us on Facebook

facebook

<https://www.facebook.com/tbeaptos/>

Rosh Chodesh Women's Passover Seder

Sunday, March 26 at 6:00 PM



All women and girls are invited to our annual Women's Seder, featuring our very own Haggadah, fabulous food and music, plus great company. Come in Biblical costume if you like. Participants are requested to bring a vegetarian, Passover-friendly dish. Please email Shirley at Shirley@Ginzburgs.com to RSVP and choose your food contribution.

Volunteers will also be needed to set up during the afternoon and clean up afterward—would you like to help? Contact Rose Ashford at rose@ashfields.net or (831) 661-5014.

Interfaith Seder

April 6
6:00 PM



Please join us for our longstanding community collaboration with Resurrection Catholic Community. This is a wonderful opportunity to share our Passover tradition with our neighbors. We will gather to help with the set up in the afternoon. For the Seder we need to bring the ceremonial foods—hard boiled eggs, charoset, parsley, lettuce, horseradish, lamb bone, wine, matzah and seder plates. Please contact Wilma at wilmagold@gmail.com or 831-728-8778 to register, to volunteer, or if you have any questions.

Mazel Tov

Mazel Tov to JASMINE BERKE and SCOTT ROSEMAN on the birth of their grandson Harvey, who was born on December 8th to parents Ishtar and Oliver Carter.

Mazel Tov to Temple Beth El member, MICHAEL MEHR, for receiving the ACLU Bell of Freedom Award at the 2017 Annual Meeting on January 15. He is a nationally recognized expert in the field of immigration law and we send him our best wishes upon being recognized by the ACLU.

Nachas

Mazel tov to TBE member DORON COMERCHERO for receiving the Tony Hill Award in recognition for his decade of leadership at FoodWhat. Doron was presented with this award and gave inspired remarks at the UCSC 33rd Annual Martin Luther King, Jr. Convocation on February 9th.



THE MAZON PROJECT IS TEMPLE BETH EL'S LONGEST-RUNNING SOCIAL ACTION PROGRAM.

Thank you very much to our compassionate congregants who have generously provided dinner to the Riverstreet Shelter every Sunday of the year since 1988, on behalf of Temple Beth El!

Our fabulous January 2017 volunteers were: Zena Krakowsky, Martha Jacobson (2X), Judi Wyant, Marcia Meyer, Carol Maler, Penny Chesluk, Amanda Jackson-Miller (2X), Ed Shapiro, Dennis & Cheryl Caspe, Margaret Brose, Lisa Segnitz (3X), Gaby Litsky, Shoshana Coplan, Susan Karz, Jonah Smith, Ellen Primack, Rachael Katz and friends, Eric Schmidt, Faye Levinson, Deborah Jacobson, Meryl Selman, Barbara Beerstein, Susan and Stephen Karon.

Synagogue News

Temple Entrance Relocation

The TBE main entrance has moved to the Soquel Drive side of the building because of the construction of the Litvak Wing expansion. The entry door is between the Sanctuary and the Social Hall. There is a new ADA sidewalk in place that leads from the parking lot

to this new entrance and there are plenty of signs to guide the way. We will keep you posted on the construction progress. Thank you for your patience and understanding as we work on making TBE an even better place to worship, meet, learn, and celebrate.

Board Report

The Board of Directors received the exciting news that just seven months into the fiscal year we have already met our membership goal for the year.

The board is moving ahead with recruiting a new Executive Director. We very much appreciate the excellent work of temple member Carolyn Coleman who graciously stepped into this position on an interim basis. At the March meeting, the board also accepted a new system of performance reviews designed by our excellent Human Resources Committee. Thank you to Laurie Getz, David Gazek, Spencer Schatz, Jackie Tuttle and Gus Gold for your careful work to make sure that our staff members have a proper system to recognize their work and to set goals with their supervisors.

The board also approved purchase of a sign for the new Soquel cemetery.

Temple Endowment Goal Reached!

Temple Beth El has reached its \$1,000,000 goal for the Next Generation Endowment Fund held at the Community Foundation of Santa Cruz County. Thank you to everyone who contributed to this important legacy investment over the years and those who pushed us over the top in honor of Rabbi Rick's retirement and Rabbi Paula's installation. We received our first distribution of \$30,680 and these funds will be used to continue to develop our vibrant TBE community. Todah Rabah!

Help us find a terrific new Executive Director for TBE. Please direct any leads or candidates to:
ccoleman@tbeaptos.org

In The Temple Family



NEW MEMBERS

Judith Appleby & James Tracey
Sherry Ascher
Miranda Allen-Brower
Matt Brower
Judy and Fred Dekalb
Olga Euben
Lisa and Max Mendez
Sarah Morgan
Serena Rivera and Chris Wilmers
Ellis, Tamara & Alex Saltz
Barbara Schatan & Richard Linzer
Adam Spickler
Marigold Fine and Jim Stanford
Ruth Vlessing and Bill Koven

MAY THEIR MEMORIES BE FOR A BLESSING



Don Myhre, step-father of Susie Polnaszek, father-in-law of Carolyn Rosevelt

Aaron Berg, father of Richard Berg, father-in-law of Made Berg and grandfather of Ana and Adam

Gift Shop



Expanded hours for Passover! We have a terrific selection of Seder plates & cups, hostess gifts, haggadahs, holiday novelties.

March 26 through April 10
Monday-Friday 10:00 AM-4:00 PM
Sunday 9:30 AM-12:00 PM
On Wednesdays, open to 6:00 PM

Program Council Update

The Program Council is continuing to work on efforts to improve communications between the various temple committees and the Board of Directors. At the January meeting of the council, several ideas were floated about how to improve this process, perhaps by creating a standard form for reporting committee progress to the board.

The Program Council is taking an active role in planning the Jewish Cultural Festival. You don't have to be a member of the Program Council to participate!

April 2017 SHOFAR DEADLINE

Copy is due March 3.

Advertising deadline is March 7.

The April Shofar will be limited to four pages and will include upcoming events, the calendar and ads from the wonderful businesses that support this newsletter and TBE.

Email copy or advertising questions to Marcia at mstein@tbeaptos.org or call 831-460-1389. The SHOFAR is published September-June by Temple Beth El Jewish Community Center, 3055 Porter Gulch Road, Aptos, CA 95003. Phone 831-479-3444, fax 831-475-7246. A TBE membership benefit. Non-member subscription rate \$40/year. Vol. 50, No 5. Marcia Stein, Editor/Publisher.

Youth/Calendar Highlights

*This month's Temple School article is written
by a parent—Lori Kearney*

As I watched my daughter become a Bat Mitzvah recently, I was struck by the progression from shy young child to quiet confident teen. Meghan stood at the bimah with poise and grace. Her Hebrew was flawless; her speech wise. She spoke of the importance of understanding different perspectives, even that of a Pharaoh.

As she seamlessly co-lead the service with Rabbi Paula, I thought of how beautifully our rabbis guide our children—the transition from the creative play of kindergarten, to multi-layered KEF classes and thoughtful learning about the Holocaust in fourth grade, to the advanced study of 7th grade. My family treasured the b'nai mitzvah retreat, the prayers and blessings classes and the chance to

study individually with the rabbis. So many lovely moments, each a magical thread weaving a bond between families. And I am grateful for the thoughtful, reflective and yes, sometimes silly, group of kids Meghan is a part of.

Our family has been through some difficult trials this year but working toward this Bat Mitzvah was like following a beacon of light. It was all we could have dreamed of and more.

Thank you Rabbi Paula and Rabbi Shifra for your wisdom and love. To Sarah Clarkson for your behind the scenes work at the school. To Rabbi Rick for your guidance over the years. To all the wonderful friends at Temple Beth El on this journey to this sacred rite of passage.

TEMPLE SCHOOL CALENDAR

Wednesday, March 1

4-6, KEF, Hebrew, 7th grade & Hebrew High

Sunday, March 5

Yad B'Yad, TS K-6, Jewish Parenting Group, Purim Spiel

Wednesday, March 8

4-6, KEF, Hebrew, 7th grade & Hebrew High

Sunday, March 12

Purim Carnival, TS 4-6, K-3 with Parent Participation

Wednesday, March 15

4-6, KEF, Hebrew, 7th grade & Hebrew High

Friday, March 17

Beth El Bim Bam

Sunday, March 19

K-6, 2nd grade Parent Participation, Jewish Parenting Group, Camp Kayetz Presentation

Wednesday, March 22

4-6, KEF, Hebrew, 7th grade & Hebrew High

Sunday, March 26

TS K-6, Jewish Parenting Group

Wednesday, March 29

No Temple School



Celebrating Shabbat at Simcha

Celebrating Shabbat with the children at Simcha is one of our very special traditions. Alternating between Thursdays and Fridays, so all attending children have a chance to share the experience, the whole school gathers together in the Pre-K classroom. That morning, one of the classrooms bakes challah. The Preschool classroom also has developed a tradition of having each child make their very own mini challah to take home. During our celebration led by Rabbi Paula or Rabbi Shifra, we do the blessings together, lighting the candles, drinking grape juice and sharing our challah. We are learning about the tzedakah box by adding pennies to help others. The children gain a repertoire of Hebrew songs and celebrate the holidays throughout the year.

Lifelong Learning



Salon on the Haggadah

with Nathaniel Deutsch, PhD

Tuesday, March 28, 7:00 PM

at the home of Norma & Ed Sacks

Nathaniel will lead a discussion on the Haggadah, focusing on the history of the text and on a commentary that he wrote for *The New American Haggadah*, a collaboration with Jonathan Safran Foer, Nathan Englander, and others.

Introduction to Talmud

with Shlomo Vilozny

Thursdays, March 16–April 20

7:00 PM to 8:15 PM

For both Hebrew readers and non-Hebrew readers, we will cover the history and the development of the Talmud and its impact on the Jewish way of life. We will also read some Talmudic texts that shed light on the ways our sages addressed issues that are still relevant today. No experience with Talmud is necessary. Cost: \$36* donation requested.

Get a registration form in the temple office or on the Lifelong Learning page of the TBE website.

* No one will be turned away for lack of funds.

BOOKSHOP SANTA CRUZ

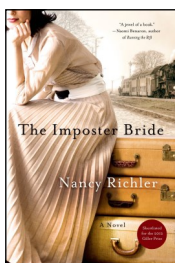
- NEW & USED BOOKS
- Kobo E-BOOKS & E-READERS



Bookshop Santa Cruz - 1520 Pacific Ave
Downtown Santa Cruz - 423-0900
www.bookshopsantacruz.com

Calendar Highlights

TBE Book Group



We will meet on March 7, 7:30 PM, at the home of Leta & Alan Miller. Their address is 107 Iowa Dr., Santa Cruz.

Our next book selection is *The Imposter Bride* by Nancy Richler. It picks up an important thread from *Moonglow* that will be worth exploring further. It is recommended by at least one group member who has read it and it has received positive reviews.

The Imposter Bride is available in paperback (new and used) as well as digital and audio formats from a variety of sources. An audio version is available for free from Hoopla via the SC Public Library.

Conversations on Being Mortal Continue

with Holly Blue Hawkins,
Rabbi Paula and Reb Eli

Tuesday, March 14
7:30 PM at Temple Beth El

Everyone is welcome to this ongoing discussion group. Bring your questions, concerns and curiosity. This two-part facilitated discussion forum offers an opportunity to delve into end-of-life issues and explore the subject in a Jewish context. Holly Blue is the founder of Last Respects Consulting.

Co-Sponsored by Temple Beth El and Chadeish Yameinu. Please RSVP to Sarah at sclarkson@tbeaptos.org.



Senior Connections

March 13

Mark Levy, a troubadour of all things Jewish, will regale us with a musical program *Jews and Jazz*.



March 27

From the Senior Connections' Archives: Come watch the filmed version of a live (2006) performance of *Yiddishkeit and Mamaluschen*, conceived and developed by Faye Alexander and performed by Faye, Shirley Ginzburg, Lucille Pine and Gilda Zelin. Bring your yiddish voices and your tissues! You will love this program filled with humor, stories both nostalgic and illuminating, and the joy of Yiddish song.

Programs are on the 2nd & 4th Monday of each month, 2:00–3:30 PM in the TBE Library. (Come at 1:30 to nosh & schmooze.) Open to the public. Free.



Jewish Film Festival
April 1, 3, & 5 at 6:00 PM

**Interfaith Seder
at Resurrection Church**
April 6 at 6:00 PM

Passover Seder at TBE
April 11 at 6:00 PM

Young Families Passover Seder
April 15 at 5:00 PM

**Brotherhood Brunch
What Goes Wrong in Cancer**
April 23 at 10:00 AM

Beth El Bim Bam
April 28 at 5:45 PM

Mitzvah Day
April 30 at 9:00 AM

Celebrate Women's History Month at TBE

Please join us for Sisterhood Shabbat on March 24 at 7:30 PM. Rabbi Sue Levi Elwell will be sharing excerpts from her recent book, *Chapters of the Heart: Jewish Women Sharing the Torah of Our Lives*.

The founding Director of the Los Angeles Jewish Feminist Center, Rabbi Elwell has spent 30 years working toward creating and sustaining healthy, inclusive, vibrant and open-hearted communities and congregations. She has served as a congregational rabbi in California, New Jersey and Virginia, and many universities including UCLA and the Hebrew Union College-Jewish Institute of Religion. Rabbi Elwell edited *The Open Door*, the CCAR *Haggadah*, and served as the poetry editor of *The Torah: A Women's Commentary*.

To learn more about *Chapters of the Heart* please visit:
<http://chaptersoftheheart.com>



COPA Training

Thursday, March 2

COPA is our local social justice organization. TBE is a committed member, working on criminal justice reform, affordable housing, healthcare and other issues facing our community. TBE is hosting a training session for interested congregants and for other COPA team members on Thursday, March 2, from 6:30 until 8:30 PM. The event will be a conversation and training on *Political Friendship* and the art of relational meetings in a divided community. Refreshments will be served. RSVP (encouraged, but not required) to Rose Ashford at rose@ashfields.net.

**WELCOME to the 17th SEASON of the SANTA CRUZ
JEWISH FILM FESTIVAL!**
April 1st - Jewish Community Center at Temple Beth El, Aptos
April 3rd and 5th - Del Mar Theatre, Santa Cruz



Dear Friends,

This year's films, from Israel, Tunisia, France and the USA, were selected from more than sixty films reviewed. The program touches on themes of remembrance, pride, longing, survival, and success against all odds.

The selection process, as usual, was challenging - and fun. The Jewish Film Festival committee argued about films like anarchists debating politics, so if we unanimously agreed on a movie, you know it has to be good!

ON THE MAP received the highest ratings of all films reviewed this year, telling the incredible story of the 1977 Maccabee Tel Aviv basketball team. It's a fun film that illuminates a moment in time when Israel arose from despair, and claimed a proud spot on the world stage. You don't have to love basketball to love this film.

The Santa Cruz Jewish Film Festival Committee is an all-volunteer organization that relies on donations from individuals and small businesses to put on our shows. Donations are welcome, and we never turn anyone away for lack of funds.

Donations received in advance of the festival help us show films for free and may be acknowledged in the program. Every amount is appreciated! You can be a Friend of the Festival, a Film Sponsor, or an Angel, from \$36 on up to \$1000 and beyond - whatever fits your budget.

Friends, Donors, Sponsors and Angels will receive various perks; some with raffle tickets, some with entry to the gala reception and evening, some with advertising in the theatre and/or festival program. Please make checks out to Temple Beth El, with (important) SCJFF on the Memo line, and deliver or mail to Jewish Community Center at Temple Beth El, 3055 Porter Gulch Road, Aptos, CA 95003

For more information, visit our website: SCJFF.com Phone: SCJFF FILM 4 - (725) 333-4564

Thank you for your support, and we'll see you at the movies!
Paul Drescher, Chair

Special thanks to our Institutional Sponsors!



Temple Beth El
Jewish Community Center



17th SEASON, SANTA CRUZ JEWISH FILM FESTIVAL

SATURDAY, April 1st

Jewish Community Center at Temple Beth El, 3055 Porter Gulch Rd, Aptos

6:00 - 7:00pm – RECEPTION – Catered by Zena! – refreshments, wine, coffee

Admission: \$20 Single, \$35 Couple: Reception, two movies and raffle ticket.

NO ONE TURNED AWAY FOR LACK OF FUNDS.

7:00pm - EL HARA – Documentary, Tunisia/France, 2016, 15 minutes

A filmmaker's poetic memoir of a lost community in North Africa.



7:20pm - RESTORING TOMORROW - Documentary, USA, 2016, 90 minutes

Writer/Director will be with us to introduce the film, and for Q&A afterward.

A Los Angeles treasure, the Wilshire Blvd Temple, built by the original Hollywood moguls, was facing a disgraceful demise. The historic building and the future of a central Los Angeles community was at stake. A rabbi and a filmmaker go on very personal journeys.

MONDAY, April 3rd – No charge, donations appreciated.

Del Mar Theatre, 1124 Pacific Avenue, Santa Cruz

6:30pm - ONCE in a LIFETIME - Drama, France, 2014, 105 minutes

Underprivileged and rebellious French high school kids, more concerned with jeans than genocide, are challenged to compete in a contest which changes the students' attitudes dramatically. Based on a true story, co-written by a French Muslim. This film won awards at New Hampshire, Boston, Santa Barbara and Toronto film festivals.



8:15pm - ON THE MAP

Documentary, Israel 2016, 85 minutes

Special guest appearance!

During a dark period for Israel, the national basketball team fought its way to the 1977 European Championship in a quest for their "miracle on hardwood." This delightful movie profiles a team that captured the heart of a nation, and surprised the world!

WEDNESDAY, APRIL 5th – No charge, donations appreciated.

Del Mar Theatre, 1124 Pacific Avenue, Santa Cruz

6:30pm - IS THAT YOU? Drama, Israel/USA, 2014, 81 minutes

Ronnie, a 60-year-old film projectionist, fired from his job, ventures to the US in search of Rachel, the love of his youth. This quirky, romantic road trip by filmmaker Dani Menkin (Dolphin boy), was nominated for best film at the 2014 Israeli Academy Awards.



8:00pm - FANNY'S JOURNEY

Drama, France/Belgium, 2016, 95 minutes

It's 1943. 13-year-old Fanny and ten other children are sent from France to an Italian orphanage for Jews. Soon these kids are on their own and on the run from the Nazis. They must achieve the impossible: reach the Swiss border and freedom. Based on a true story.

For more information, visit: SCJFF.com

Phone: SCJFF FILM 4 - (725) 333-4564

General News

Brotherhood—Join Us!

Why Join?

Brotherhood connects you with other Jewish men and our Jewish community. Brotherhood supports our youth and lots of programs at TBE. Brotherhood makes you feel good about giving back to your temple. You can be just a little involved, or go overboard (like the guys on the Brotherhood Board!). At any level of involvement, it is an excellent way to experience being Jewish in Santa Cruz County. Dues for 2017 are \$54 (or more). Send your check, made payable to "TBE Brotherhood," to Richie Solomon at 218 Eleana Dr., Ben Lomond, 95005.

Visit Brotherhood on Facebook

<https://www.facebook.com/groups/282550208758686/>.

Membership

New Member Shabbat

On January 20, TBE ushered in Shabbat with "Audacious Hospitality" at our annual New Member Dinner. Forty recent temple members were welcomed into our community with open arms, worship, lovely decor, delectable food, wine and shared stories.

Special thanks to Ben Flatauer and Giselle Stayerman for catering, Gail Levine for wine, Scott Roseman and New Leaf Markets, Rabbis Paula and Shifra, and the hard working volunteers who made this event a success.

Library Volunteers Needed

We need some extra hands as we try to finish up the work of relabeling and reorganizing the books in the collection. The work consists mainly of matching and applying preprinted labels to books. No previous library experience is needed but attention to detail is crucial. Having a laptop, tablet or smartphone with wifi capability is helpful. There may be some reaching, bending and lifting involved, but we can accommodate most needs. Library work hours are Thursdays, 3:00 -5:00 PM.



If you are interested in helping with this project, please come by the library any Thursday between 3:00–5:00. If you can't make it during these hours but would still like to help, contact Lee at leejaffe54@gmail.com.

Sisterhood News

UPCOMING EVENTS

Sunday, March 5 at 2:00 PM
Hamantashan Baking/Mishloah Manot

Friday, March 24 at 7:30 PM
Celebrate Women's History Month at Sisterhood's Shabbat Service

BELATED THANK YOU to all who helped to make the Chanukah Extravaganza fun, with a special thanks to Melissa Ross and Shelly Nadelman-Douglass.

2016 Was an Accomplished Year for Social Action at TBE

The Social Action Committee (SAC) promoted several restorative justice initiatives including:

♦ Hosting a summit for Proposition 47 implementation to help formerly incarcerated persons integrate back into society. Over 20 service agencies attended and workshops were provided to eligible participants.

♦ With Reform CA, we worked to pass Proposition 57, which among other issues, provides fair treatment of juveniles charged with a serious crime. We hosted Social Action in the Sukkah attended by State Senator Bill Monning, Chief Probation Officer Fernando Giraldo and Rabbi Jessica Kirchner of Reform CA. The SAC then called TBE members to encourage a "yes" vote for Prop 57.

♦ Our moving Justice Shabbat Service raised awareness of the inhuman practice of long-term solitary confinement in prisons. Temple and community members, with CA Families Against Solitary Confinement, performed a readers' theater presentation quoting from the book, *Hell is a Very Small Place: Voices from Solitary Confinement*, a readers' theater called "If the SHU Fits," and Torah and Talmud. You can view the readers' theater on YouTube by searching Temple Beth El 2016.

♦ We sponsored the collection of hats, scarves, gloves and socks for homeless people as part of Rabbi Paula's Celebration. Four large sacks were donated and distributed to three organizations.

Please watch the Temple Weekly email for future meeting announcements and join us!

If You Were Interviewed for TBE's Oral History Project, circa 2002–2008, Senior Connections Asks for Your Help

The Senior Connections committee wants to digitize the over 60 VHS tapes containing 30-minute interviews of various TBE members. These were conducted during the years of 2002–2008. About 10 tapes are missing and

we don't have a master list to know which interviewees these represent.

If you were interviewed please contact Marlene Pitkow at 831-818-4809 or marsp777@gmail.com. Let her know whether or not you have a copy of your

taped interview and if so, approximately when it was done.

Many thanks for your attention. These interviews represent a priceless archive for Temple Beth El, for the interviewees and their families.

Contributions *January 31*

B'NAI MITZVAH

A gift

Brotherhood

BUILDING FUND

A gift

David & Cheryl Caspe

Ysraelya Dolinger

John Glass & Cassandra Sprenger

Susan Warren

Lee Oberg

In memory of Aaron Berg, father of
Richard Berg

David & Cyn Baskin

CANDY COONERTY WOMEN OF VALOR FUND

In honor of Amy Harrington, a
wonderful woman, indeed

Paul & Susan Karz

In honor of Margaret Gordon

Diane Grunes

In honor of Amy Harrington

Diane Grunes

In honor of Margaret Gordon & Amy
Harrington

Casey Protti

CHOIR FUND

A gift

Leta & Alan Miller

In honor of Michelle Kibrick's poetry
publication

Sandra Cohen

ENDOWMENT FUND

In honor of Rabbi Paula

Jeff & Deborah Roisman

In honor of installation of Rabbi Paula
Marcus

Rae Grad

In honor of Rabbi Paula Marcus
becoming Senior Rabbi

Jerry & Terry Spodick

FILM FESTIVAL FUND

A gift

David & Cheryl Caspe

David Cecy

Thomas Fox

Lenore Hindin

Carolyn Hyatt

Rabbi Richard Litvak

Marcia Meyer

Jacob & Hila Michaelsen

Michael & Terry Rein

Diana Rothman

Ed & Norma Sacks

Schoolhouse Chai

Daniel & Lucienne Seftel

Martha Williams

Julie Tauriainen

Renee Winter & Paul Roth

Judi Wyant

David & Amy Harrington

Lisa Sheridan

In honor of David and Marilyn Rigler

David & Cyn Baskin

In honor of Marilyn Rigler

Sandra Cohen

In honor of Marilyn Rigler's birthday

Gail Levine & Emily Wughalter

In memory of David Rigler

Marilyn Rigler

GENERAL MEMBERSHIP SERVICES FUND

A gift

Barbara Block

Daniel Orange

Sisterhood

In honor of Amy Harrington's birthday

Etiel Herring

In honor of Amy Harrington's 60th
birthday

Judy & Dan Phillips

In honor of Larry Levin's birthday

Dennis & Cheryl Caspe

In memory of Rose Rich

Shalom Compost

In memory of Ruth Schatan & Clara

Frazer Golden

Phillips-Schatan Families

GORDON BAR/BAT MITZVAH FUND

A gift

Brotherhood

HIGH HOLIDAY ANNUAL APPEAL

A gift

Marvin & Iris Bornstein

HOME OF PEACE PERPETUAL CARE FUND

In memory of Bea & Leo Greenberg

Rivka Greenberg

JANET ROTHCHILD ROCK SHABBAT FUND

A gift

Janie Crabb

Philip Davis

Linda Donovan

Gerry Kondo & Vicki Halil

Barry Marks & Julie Lorraine

Scott Roseman & Jasmine Berke

Bill Sillavo

Leonard & Geri Wolff

In memory of Rose Rich

Shalom Compost

L'DOR V'DOR ENDOWMENT FUND

In honor of Amy Harrington's 60th
birthday and her dedicated service to
TBE

Curt & Carolyn Coleman

LIBRARY FUND

In honor of Mara Stein

Marcia Stein

In memory of Miriam Oppenheimer

John Oppenheimer

MINYAN FUND

In honor of Jonathan Marx

Edward & Miriam Tutman

In honor of Arielle Bennet's Bat
Mitzvah

Etiel Herring

ONEG FUND

A gift

Dennis & Cheryl Caspe

Leland & Marian Zeidler

In memory of Israel Needelman

Shirley Forsyth

In memory of Miriam Oppenheimer

John Oppenheimer

RABBI LITVAK DISCRETIONARY FUND

A gift

Elizabeth Alpert

Judi & David Novik

In honor of Rabbi Rick

Allan & Judith Dorosin

In honor of Rabbi Rick for officiating
for my parents memorial, Carol and

Sam Nahin

Melinda Iuster

RABBI LITVAK SENIOR YOUTH GROUP FUND

In honor of Jane Jordan on her
birthday

Margaret Gordon

Jacob & Hila Michaelsen

RABBI MARCUS DISCRETIONARY FUND

A gift

Elizabeth Alpert

Leah Wilson

In honor of Rabbi Paula Marcus

Ziggy Bregman

Susan Wagner

In honor of Nathaniel Deutsch

Etiel Herring

In honor of Paul Frommherz's
conversion

Etiel Herring

Yetta Lippman

Nita Lamendola

Contributions *January 31*

In honor of Rabbi Paul Marcus' installation as Senior Rabbi
Marcia Meyer

In memory of Ellen Abrams
Sasha Abrams (Gordon and Betty Moore Foundation)

In memory of Florence Feinfeld
Carol & Paul Berman

In memory of Richard Berg's father
Diane Grunes

In memory of Kathy Goldenkranz, an amazing woman
Mary Spire

In memory of my father Irv Weill
Estalee Weill

RABBI RICK & NANCY LITVAK CULTURAL ACTIVITIES FUND

In honor of Liz and Marq Lipton's 40th wedding anniversary
Fay Levinson & Joe Vela

RABBI WEISS-PENZIAS DISCRETIONARY FUND

A gift

Alan Chates

In honor of Rabbi Shifra Weiss-Penzias, thank you
Paul Frommherz

In memory of my mother, Barbara
Jennifer Kaupp

SENIOR CONNECTIONS

In honor of Marlene Pitkow, speedy recovery

Diane Grunes

SIMCHA PRESCHOOL

In honor of Silvia and the work she does

Doris Goodill

In memory of Grace Valdez's brother
Taj Eugene Field
Rabbi Richard Litvak

SISTER CONGREGATION ADAIN LO JEWISH FAMILY CENTER

A gift

Dave & Marion Brodkey

Paul & Martha Jacobson

Daniel & Bonnie Holmer-Orange

Rabbi Richard Litvak

Sylvia Prysant

Dave & Renee Roberts

Carolyn Rosevelt

In honor of Solomon Lubell's Bar Mitzvah

Danna Greenberg

In memory of Florence Cohen Nadelman
Shelly Nadelman-Douglass

SOCIAL ACTION FUND

A gift

Gladys Gilbert

In honor of Judi Sherman's birthday
Etiel Herring

In honor of the Murray & Sheila Baumgarten Endowed Chair in Jewish Studies
Diane Grunes

SRFY PURIM

A gift

Brotherhood

TEMPLE SCHOOL SCHOLARSHIP FUND

A gift

Spencer Schatz

YOUNG FAMILIES PROJECT

A gift

Sisterhood

YOUTH TO ISRAEL FUND

In honor of Marq and Liz Lipton on their special anniversary

Stephen & Susan Karon

In memory of Rich Persoff, beloved husband of Ann

Stephen & Susan Karon

YOUTH SCHOLARSHIP/CAMPERSHIP FUND

In honor of Eli Mitchell


Yetta Lippman

ATTORNEY AT LAW

MILES J. DOLINGER

CALL TODAY
(831) 477-9193
314 Capitola Ave, Capitola, CA

LAND USE • REAL ESTATE • BUSINESS • LITIGATION



Expertise. Efficiency.
Advocacy. Happy Clients.

What you can expect when you put
21 years of land use, real estate and
litigation experience on your side.

www.dolingerlaw.com
Serving all of Santa Cruz County and Beyond



GAYLE'S
BAKERY & ROSTICCERIA

Hamentashen
for
Purim

**Nutella or
Lemon Poppy Seed**
\$2.50

Available March 9th to 13th.

504 BAY AVENUE, CAPITOLA, CA 95010
(831) 462.1200 WWW.GAYLESBAKERY.COM



Strength does not come from physical capacity.
It comes from an indomitable will.

March 2017

Temple Beth El Jewish Community Center • Adar-Nisan 5777

All events are subject to change. Please check the Temple website. www.tbaptos.org or call the office at 831-479-3444 to verify information.

SUNDAY	MONDAY	TUESDAY	WEDNESDAY	THURSDAY	FRIDAY	SATURDAY
			1 Temple School KEF 4th –6th Grade 4:00pm 7th Grade & Hebrew High 6:45pm	2 Lunch & Learn 12:00pm Library Open 3:00pm COPA Training 6:30pm Wise Aging with Rabbi Rick 7:00pm	3 Erev Shabbat Service 7:30pm  5:46pm	4 Shabbat Unplugged Morning Service (Terumah) 10:00am
5 Temple School 9:45am Jewish Parenting Group 9:45am Yad B'Yad 9:45am Purim Spiel 11:45am Beginning Biblical Hebrew 12:00pm	6	7	8 Healing Circle 12:30pm Temple School KEF 4th –6th Grade 4:00pm Simcha Pizza My Heart Fundraiser 4:00pm 7th Grade & Hebrew High 6:45pm	9 Lunch & Learn 12:00pm Library Open 3:00pm	10 Erev Shabbat Service 7:30pm  5:52pm	11 ShabbASANA Shabbat Yoga 10:00am Shabbat Service with CY (Tetzaveh) 10:00am (out) Purim Celebration 7:00pm Erev Purim
12 Temple School 4–6th grades, K–3 Parent Participation 9:45am Megillah Reading & Costume Parade 9:45am Grades K–3 Carnival Games 10:30am Grades 4-6 Megillah Reading/Costume Parade 11:00am Grades 4–6 Carnival Games 11:30am Beginning Biblical Hebrew 12:00pm	13 Senior Connections 1:30pm	14 Conversation on Being Mortal 7:00pm	15 Temple School 4th–6th Grade 4:00pm 7th Grade & Hebrew High 6:45pm Sisterhood Wine & Cheese 7:00pm	16 Lunch & Learn 12:00pm Library Open 3:00pm Introduction to Talmud 7:00pm	17 Beth El Bim Bam Potluck 5:45pm Beth El Bim Bam 6:30pm Rock Shabbat Service 7:30pm  6:59pm NFTY Spring Camp	18 (Ki Tisa) NFTY Spring Camp
19 Temple School & 2nd Grade Parent Participation 9:45am Jewish Parenting Group 9:45am Camp Kayetz Presentation 11:20am Beginning Biblical Hebrew 12:00pm NFTY Spring Camp	20	21	22 Temple School KEF 4th –6th Grade 4:00pm 7th Grade & Hebrew High 6:45pm	23 Lunch & Learn 12:00pm Library Open 3:00pm Interfaith Seder Study 4:00pm Introduction to Talmud 7:00pm	24 Women's History Month Sisterhood Shabbat Service & speaker Sue Ewell 7:30pm  7:05pm	25 Shabbat Morning Service (Vayak'hel/ Pekudei) 10:00am
26 Temple School 9:45am Jewish Parenting Group 9:45am Beginning Biblical Hebrew 12:00pm Rosh Chodesh Women's Seder 6:00pm NFTY CWR Spring Conclave	27 Senior Connections 1:30pm	28 General Board Meeting 7:00pm Salon on the Haggadah 7:00pm (out)	29 No Temple School	30 Lunch & Learn 12:00pm Library Open 3:00pm Introduction to Talmud 7:00pm	31 Erev Shabbat Service 7:30pm  7:11pm	1 Shabbat Unplugged Morning Service (Vayikra) 10:00am Jewish Film Festival 6:00pm

If your party
has to be special...

ZENA

event coordination
quality catering
personal chef

(831) 247-7733

callzena.com



Non-Profit Org.
U.S. POSTAGE
PAID
PERMIT NO. 13
Aptos, CA

TEMPLE BETH EL
JEWISH COMMUNITY CENTER
3055 Porter Gulch Road
Aptos, CA 95003

Senior Rabbi Paula Marcus • Associate Rabbi Educator Shifra Weiss-Penzias
Interim Executive Director Carolyn Coleman • Board President Scott Roseman
Shofar Editor/Publisher Marcia Stein

Serving Santa Cruz Since 1986

Neal Langholz
Broker Associate
831.818.4822
neallangholz@gmail.com
BREX 00933304




1109 Mission St. Santa Cruz, CA 95060
www.karonproperties.com

REIN & REIN

A PROFESSIONAL LAW CORPORATION

MICHAEL A. REIN • TERESA VIG REIN
LLOYD R. WILLIAMS, OF COUNSEL

REAL ESTATE AND
BUSINESS TRANSACTIONS
www.reinandrein.com

550 Water St., Bldg. H
Santa Cruz, CA 95060

Tel 831.607.8833
Fax 831.607.8832

SUNRIDGE FARMS™
ORGANIC & NATURAL FOODS



AVAILABLE AT YOUR
LOCAL NATURAL FOOD
STORES AND SUPERMARKETS

Nuts & Seeds, Dried Fruits, Candies, Trail Mixes
sunridgefarms.com • Royal Oaks, CA • (831) 786-7000

