



the shofar

Temple Beth El Jewish Community Center, Aptos, California ☆ Vol. 49, No 5 ☆ January 2016 ☆ Tevet–Sh'vat 5776

Tu B'Shevat Seder

Sunday, January 24
5:00–7:00 PM



In the Land of Israel, trees are starting to bud and the sap is rising. Tu B'Shevat is a time to remind us of the blessings of food and oxygen, beauty and protection we get from trees. Come to the TBE Tu B'Shevat Seder, in which we learn how our Jewish tradition inspires us as a people to be responsible for caring for the environment. We learn the coolest secrets of how the Mystical tradition of Judaism thought people were like different types of fruit. It is a time for us to really taste the fruits with new appreciation and count our many blessings together. All members and their families are invited to our TBE Tu B'Shevat Seder led by Rabbi Shifra and Peter Weiss-Penzias. Join us for delicious food, learning, music and fun.

Seder items, dessert and grape juice will be provided. For the potluck dinner, please bring something to share.

A-G: vegetarian appetizer and bottle of red wine

H-S: vegetarian main course and bottle of white wine

T-Z: vegetable or salad and bottle of red wine

RSVPs to Sarah Clarkson sclarkson@tbeaptos.org by January 17th are helpful for planning. We're looking forward to the biggest and most joyous Tu B'Shevat celebration ever! Hope to see you there!

Jewish Residential Camp Fair

Sunday, January 31

Presentation from 11:00–11:45 AM

Question and answer period from 11:45 AM–12:30 PM

Four different Jewish overnight camps will be presenting: URJ Camp Newman, Camp Tawonga, JCC Maccabi Sports Camp and Camp Ramah in northern California. Come find out about these wonderful options for Jewish residential camps and camperships. After the program camp representatives will answer questions.

The camp fair is open to the community and interested parents are encouraged to attend. 2nd–6th grade Temple School students will attend during temple school and will be dismissed at 11:45.



Martin Luther King, Jr. Shabbat Service

Friday, January 15
7:30 PM



Looking for Photographs

In preparation to honor Rabbi Rick, we are looking for photographs from his 40 years at Temple Beth El. If you have pictures of Rabbi Rick that you would be willing to share—from a bar or bat mitzvah, wedding, or other simcha—please send copies (we cannot return originals) to Adrienne Swedlove at the temple. They can be hard copies or digital files.

American Jewish World Service Presentation

The executive director of the American Jewish World Service (AJWS) in San Francisco, Alon Shalev, is coming to Temple Beth El. He will speak with the TBE congregation and Hebrew High, the Santa Cruz Jewish Community and the Out in Our Faith Community, on human rights and LGBTQI rights around the world. The AJWS services 19 countries.

Together with Rachel Simon, development director, the two will be at TBE on Wednesday evening January 20, from 7:30–9:00 PM.

Spirituality

THOUGHTS FROM RABBI PAULA



Rabbi Paula

B'reshit 2:18: "It is not good that the human should be alone."

I think it's safe to say that all of us gathered in the sanctuary on November 22 for Justice Shabbat

were moved to hear what one mother shared about her own story and her son's story.

Dolores Canales is a mom. Due to a difficult childhood that led to her own addiction to illegal drugs, Dolores spent 20 years in prison. Her son, Johnny Martinez, a jailhouse lawyer, has been in the Security Housing Unit (SHU) solitary confinement for almost 15 years. When he and thousands of other people locked up in California prisons went on a hunger strike to end solitary confinement and abusive prison conditions, she said: "I'm just a mom who wanted her son to eat." Dolores has emerged as a powerful public voice in the anti-solitary confinement movement in California and the United States. Dolores shared her son's story and described her moment of revelation that happened after buying a dozen cage-free eggs. As she put it, do we care more about chickens than human beings?

At our November 17 meeting, the Temple Beth El board approved a proposal from the Social Action committee to become co-sponsors for Statewide Coordinated Actions To End Solitary Confinement (SCATESC) and the national collaboration Together to End Solitary (TES).

We have made this decision in concert with The Religious Action Center (RAC) of the URJ which supports

efforts to end solitary confinement.

Studies have shown that the ongoing use of this practice challenges the United States' commitment to both domestic human rights and international practices.

We learn in the opening chapters of the Torah that all human beings—and this includes prisoners—are created b'tzelem Elohim, in the image of God, and therefore must be treated with respect and dignity.

SCATESC was initiated on March 23, 2015 in response to proposals by people in solitary in California. TES is the national effort to end solitary. Actions and demonstrations are held on the 23rd of every month for the 23 and more hours a day that people are locked up in solitary cells, for years and decades. As part of COPA, our congregation has been part of these efforts but the vote by our board makes this support more explicit.

On February 7, from 3:00–4:30 PM we will be showing the film, *Breaking Down the Box*, a 40-minute documentary for communities of faith, to expose the torture of solitary confinement in the context of mass incarceration in the United States. As described by the National Religious Campaign Against Torture, the film "explores the mental health, racial justice and human rights implications of the systemic use of solitary confinement in U.S. prisons. It is a call to action for communities of faith to engage in the growing nationwide movement for restorative alternatives to isolated confinement that prioritize rehabilitation, therapeutic interventions, and recovery."

Please join us as we learn how to engage in this important human rights issue.

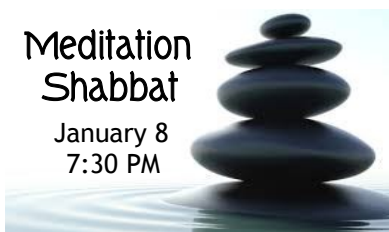
—Rabbi Paula Marcus

FEBRUARY 2016 SHOFAR DEADLINES

Copy is due January 4. Advertising deadline is January 7. Email copy or advertising questions to mstein@tbeaptos.org or call 831-460-1389. The SHOFAR is published September–June by Temple Beth El Jewish Community Center, 3055 Porter Gulch Road, Aptos, CA 95003. Phone 831-479-3444, fax 831-475-7246. A TBE membership benefit. Non-member subscription rate \$40/year. Vol. 49, No 5. Marcia Stein, Editor/Publisher.

Meditation Shabbat

January 8
7:30 PM



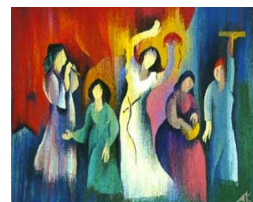
May the Memory of our Loved One be a Blessing

A Bereavement Group for Women

In response to requests from a few TBE members, Rabbi Paula will be offering a six-week bereavement group for women whose partners have died. We will share support, stories, and ways of coping with grief and memories of loved ones.

This is the first time we will be co-sponsoring a group with a facilitator from Hospice of Santa Cruz. We have had requests for other bereavement groups and will be offering other opportunities in the near future.

Please contact Rabbi Paula at pmarcus@tbeaptos.org or call her at 479-3444 ext 205 if you are interested. We will meet on January 28, February 4, 11, 18 & 25 and March 3, from 7:00–9:00 PM. Please let Rabbi Paula know if you need help with transportation.



Rosh Chodesh Shevat

Our Women's Rosh Chodesh Group will gather on Sunday, January 10, at 7:00 PM, for Rosh Chodesh Shevat. This is the month during which we celebrate Tu B'Shevat—The New Year of the Trees—a holiday that connects us to our agricultural roots. What will Jewish women be doing during Shevat? Join us and find out! Feel free to bring part of a tree to share. All women are welcome.

Rock Shabbat

January 22
7:30 PM



Music, worship and spirituality with the TBE Rock Shabbat band. Sponsored by *Chavurah by the Sea—Debra & Tony Sloss, Kathy Cytron & Shmuel Thaler, Teresa Buika-Leopold & John Leopold, Karen Zelin & Bill Underwood, Stephanie Barnes-Castro & Pedro Castro, Suzanne & David Silverglate, Melissa & Cary Sunberg.*

Synagogue News

A MESSAGE FROM OUR TEMPLE PRESIDENT



Gail Levine

On November 5, 2015 at the URJ Biennial the delegate assembly passed the most far-reaching resolution in support of transgender rights saying that this reflects a continuation of a tradition of inclusion in the

Jewish movement. This resolution calls for congregations and camps to have gender-neutral bathrooms and encourages gender-neutral language at Reform Jewish institutions. It also suggests training on gender issues for religious school staff and encourages advocating on behalf of the transgender community. Reform Judaism joins other religious bodies such as the Episcopal Church, the United Church of Christ and the Reconstructionist Rabbinical Association who approved resolutions affirming equality for transgender and non-gender-conforming people. When the resolution was unanimously passed I cheered, along with others sitting in the room. I am proud to be a member of a religious group that recognizes equality for some is not good enough and that equality for all is imperative in our congregations.

What are the implications for TBE? URJ provides a brochure and resources with information for congregations to

use in reviewing their practices. Our board, rabbis, executive director and staff will continue to work on providing a safe and supportive space for all members. I see our embracing of transgender rights as one more step that is essential in offering a safe and welcoming space to our congregants and any guests walking through our doors.

In last month's Shofar Adrienne Swedlove's column spoke about the URJ's focus on audacious hospitality. At the Biennial this phrase was publicly displayed and referred to over and over again. In sessions I attended, we were introduced to steps on how we become or improve on how we provide "audacious hospitality" in our congregations. A congregant of Temple Beth El, Texas, referred to audacious hospitality as more than being a lovely host. It is being an organization that "thinks outside the box" to allow people to participate and feel they are making a difference. I believe with the assistance of URJ resources and all of us working together we will become even more inclusive and welcoming in not only the year ahead, but in the many years to come. I look forward to all of us joining together to become that place that is audaciously hospitable to everyone.

—Gail Levine

Transitions Update

Plans for the expansion of the Temple building with a new Litvak Wing have now been submitted to Santa Cruz County. While awaiting approval of the building permit, the expansion committee will consider whether to hire a general contractor for the project.

Regarding the transition of our clergy, Rabbi Paula Marcus, President Gail Levine, President-Elect Scott Roseman and Executive Director Adrienne Swedlove have been meeting to develop the clergy and organizational structure to take effect on July 1st. The group is examining the many aspects of this transition, including personnel responsibilities and available funding. Once a proposed structure is developed it will be brought before the board.



Program Council

In following up on the successful Program Council leadership retreat held in the fall, the council will be meeting with several members of the Temple Board of Directors to chart a course for the council's future work. By bringing together five members of the board and four of the leaders of the Program Council in an ad hoc committee, it is hoped the two groups will align

their goals for the development of future programs and engagement among our congregation. This committee will meet in late January to focus on how the board communicates and collaborates with the council—and all Temple committees—as well as the development of a method to distribute leadership broadly across the Temple community.

Board Report

At its November meeting, the Temple Board of Directors took a stand against solitary confinement of prisoners. The board unanimously approved a recommendation from our Social Action Committee to co-sponsor Statewide Coordinated Actions To End Solitary Confinement and the nationwide collaboration Together to End Solitary, which takes action on the 23rd of every month, for the 23+ hours people spend in their solitary cell every day. The Religious Action Center of the Reform Judaism reported that: "...studies have shown that solitary confinement is associated with a variety of physical and mental illnesses, increases recidivism, and fails to reduce prison violence... Jewish tradition holds that all human beings, including prisoners, are created b'tzelem Elohim, in the image of God, and therefore must be treated with respect and dignity. As Jews, we must demand an end to the practice of solitary confinement, which degrades human dignity." Thank you to Temple members Willow Katz and Merle Lustig, who will represent the Temple in our sponsorship of these efforts.

The board also approved an expenditure of \$15,000 from the Temple Cemetery Fund for restoration and maintenance of the Beit Olam Cemetery in Soquel. The Temple has temporarily suspended the sale of plots at the cemetery due to erosion and degradation of the property. The authorized repairs will make it possible to again sell plots, which will bring a profit to the Temple.

Youth

TEMPLE SCHOOL NEWS



Rabbi Shifra

We are now in the early stages of planning this year's Tu B'Shevat field trip to Henry Cowell Redwoods State Park on January 24, from 9:45 to 11:45 AM. We encourage family members to attend.

Our "all school" holiday celebrations and field trips are labor intensive, but they help keep things dynamic, fun and exciting. We will be celebrating the "Jewish New Year for the Trees" by exploring the spiritual, symbolic, and ecological importance of trees. We will all meet at the State Parks Gift Shop at 9:45. Please allow extra time to be sure you arrive on time. Please keep in mind that it is much damper and colder in the redwoods because they create their own micro-climate, holding moisture, so dress for cold, wet, muddy weather. Yes, we are going at the coldest part of the year, because Tu B'Shevat celebrates the early, barely visible signs of spring. I encourage everyone to pack a thermos of hot tea or cocoa, as if you were going sledding. You might also want to

bring a flashlight for when we go into the "hotel" tree. It costs ten dollars per car to enter the park, which is a worthy cause, but you can avoid paying the fee by parking on Route 9 and biking or hiking the mile-long road to the gift shop. I encourage everyone to carpool, especially to this celebration of our rich and wonderful ecology.

If it is pouring rain, we will be moving the event to the Temple. If this happens, we will confirm by sending you an e-mail at 8:30 AM that day. In case of questionable weather please check your e-mail to find out where we will be.

We had such a terrific time celebrating Chanukah! The Jewish Drama Group and the Rock Shabbat Jr. Band were amazing and our celebrations and latke feasting were fabulous.

I am so appreciative when people give me feedback about school and thankfully, from what I have heard and seen, this academic year has been terrific so far. We greatly appreciate all of your support and any donations you might be willing to make to assist Temple School.

—Blessings, Rabbi Shifra

Make Challah with the Young Families Project



We will gather on January 29, 3:30 PM, at New Leaf Westside, 1101 Fair Ave. in Santa Cruz. Want an easy & delicious challah recipe for Shabbat that you can make with your children? Join us in the kitchen at New Leaf to mix, knead and bake a beautiful challah together to take home for your Shabbat table. All equipment and supplies will be provided. Bring a friend. Everyone is welcome! RSVP to Wilma at wilmagold@gmail.com or 831-728-8778.

TEMPLE SCHOOL CALENDAR

December 23–January 9

Winter Break, no Temple School
Sunday, January 10

Jewish Parenting Class; TS K-6

Wednesday, January 13

Temple School 4-6, KEF; 7th grade & HH winter term begins

Sunday, January 17

No Temple School

Wednesday, January 20

TS 4-6, KEF; 7th grade & HH

Sunday, January 24

Tu B'Shevat Celebration

Wednesday, January 27

TS 4-6, KEF; 7th grade & HH

Sunday, January 31

3rd grade Parent Participation;

Jewish Parenting Class; TS K-6

SRFY

SRFY had an amazing time at our fall kick-off event this month at the Monterey Bay Aquarium! We had an exclusive, behind the scenes tour, got to feed the stingrays and explore the aquarium without the crowds, and woke up surrounded by the fishes.

Coming up on January 8-10 we have our famous, annual snow trip, where we will ski, snowboard and/or sled for a weekend at Homewood. The cost is \$400. Email Kate at SRFY@tbeaptos.org for more information or to sign-up. The price includes transportation, lodging, food, and either two days of lift tickets, or one day of lift tickets and one day of sledding.

Lastly, don't forget that registration for NFTY's West Coast Party is open. Keep your eyes open for an email with registration details.

Simcha Celebrated Chanukah

Chanukah was a festive time at Simcha. The children created their own menorahs to bring home. This year the teachers came up with new creative ideas including decorated driftwood menorahs (very Santa Cruz) for the Pre-K class, baked salt dough for the preschoolers and the well-known nuts and bolts menorahs in the two-year-old class. Delicious homemade latkes were also cooked and enjoyed. Chanukah was made complete with Rabbi Rick in his unforgettable menorah kippah, singing holiday songs with the children.



Acupuncture Today
Dr. Jasmine Berke
DAOM, LAC
Doctor of Acupuncture & Oriental Medicine
freedom from pain

(831) 479-1036 Soquel
www.jasmineberke.com

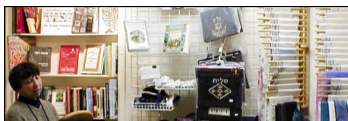
Recognition/Toda Rabah

Gift Shop

January hours are Wednesdays 2:30–6:00 PM, and Sundays 9:30 AM–12:00 noon. Or you can call Ruth or Shirley to make an appointment.

A resounding and warm THANK YOU goes to the volunteers who helped make this an especially gratifying Chanukah season at the gift shop: Letty Bess, Teri Brager, Marilyn Breiling, Jenny Wells Kaupp, Michele Kibrick, Melissa [Hava] Kraft, Gail Levine, Liz Lipton, Gaby Litsky, Julie Lorraine, Shelly Nadelman-Douglass, Lori Scher, Judi Sherman and Gilda Zelin. It took everyone's skills, time and patience to order, price, set out, sell the merchandise, as well as inventory and pack up at the end of the holiday. We could not have done it without you.

—Shirley Ginzburg & Ruth Solomon



Caring Committee Cares



The comfort of knowing that the Temple Beth El Caring Committee is here for you when you need a helping hand is an invaluable benefit of being a member of our congregation. I wish to thank all the members who volunteer for this important mitzvah.

Volunteers are available to assist members during challenging times. If you need a nourishing meal, assistance during an illness, or in the event of a death in the family, contact the Caring Committee. It's as easy as calling one of the TBE clergy or Kate Connor at 689-9459.

THANK YOU to recent volunteers Amy Harrington, Catherine Cooper, Diane Levin, Beth Ahlgren, and Ruth Smith. If you would like to become a volunteer just give me a call.

—Kate Connor

TBE Celebrates Chanukah!

What did about 300 lucky people feel the first night of Chanukah? For those of us lucky enough to attend the Temple's annual Chanukah Extravaganza on December 6, we felt the energy in the room, we felt the true sense of community in the air, we felt plump and content after eating an incredible latkes and chicken dinner, we felt like rocking with the Temple's band, and we felt the joy and pride of watching our Temple School theater group. Experiencing the menorahs being lit in the sanctuary by dozens of families, we knew we were welcoming Chanukah "TBE-style." What a night!

A BIG THANK YOU goes to Brotherhood and Sisterhood for underwriting and organizing the event, preparing and serving the food, decorating the social hall, and cleaning up. It was an incredible weeks-long job by Head Chef Andrew Goldenkranz, ably assisted by Richie Solomon, Mike Rein and many other members of Brotherhood. Melissa Ross, Lori Scher and Sisterhood also put in countless hours, and deserve a big THANK YOU as well. Thanks also to our wonderful staff, headed by Executive Director Adrienne Muscat Swedlove, and all our talented musicians and Temple School performers. This was one event that lived up to its "extravaganza" name!



December Mazon Contributors

THANK YOU to volunteers Margaret Brose, Lisa Segnitz, Leora Fromm, Rachel Katz, Dennis & Cheryl Caspe, Shelly Nadelman-Douglass, Penny Chesluk, Zena Krakowsky, Judi Novik and Gaby Litsky.



L'DOR V'DOR

From Generation to Generation

to notify Executive Director Adrienne Swedlove at aswedlove@tbeaptos.org so that we can thank you properly for your far-sighted generosity. If you're considering doing so and have concerns or questions, please feel free to contact any member of the Planned Giving Committee for a confidential, no-obligation consultation.

—TBE Planned Giving Committee:
Sheila Baumgarten, Bruce Cohen,
Margaret Gordon, Amy Harrington




Thunderbird
REAL ESTATE



Larry Hattis
Owner/Realtor®
DRE# 00864044
email: lhattis@aol.com
web: www.hattiscrain.com


2601 41st Ave, Ste. A
Soquel, CA 95073
office: 831 465-2114
cell: 831 334-3348
fax: 831 305-3009

Your Photos.
More Possibilities.



Park 475-6090
Branciforte 425-1100
www.bayphoto.com/local


bayphoto.com



KW BAY AREA
ESTATES
KELLERWILLIAMS

From the Bay Area to Lake Tahoe

Craig M. Robinson
Realtor- BRE# 01452908
Fine Homes & Investment Properties



Direct: 408.309.4004
Santa Cruz: 831.688.7614
Toll Free: 800.771.5064
Email: CraigR@kwilge.com
www.CraigSellsNorCal.com

Calendar Highlights

Senior Connections

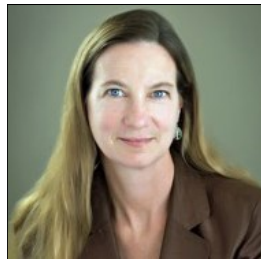
January 11 Film screening of "The Green Prince"

The son of a founding leader in the Palestinian organization, Hamas, becomes a spy for the Israelis. This riveting documentary was shown by the Santa Cruz Jewish Film Festival last year at the Del Mar. If you missed it then, it is well worth your while to see it this time. (2014) 101 minutes



January 25 Martha Mendoza

Santa Cruz based Associated Press journalist and Pulitzer Prize winner Martha Mendoza will present "From Shoe Leather to High Tech: How Journalism Freed More Than 2000 Slaves in 2015." We will hear how slaves in Southeast Asia catch and process seafood that ends up in the U.S. and how we're using the most cutting-edge technology to catch them.



OIOF Joins Diversity Center for Presentation

Out in Our Faith (OIOF) will join with the Diversity Center's LGBTQI Senior 60+ luncheon to be held on Saturday January 9, 12:30 PM, at Inner Light Ministry. Lunch will be followed by a clergy panel to include Rev. Russ Menk of the Unitarian Universalist Fellowship of Santa Cruz County, Rev. Tino Cordova of Watsonville First Christ Disciples Church, Rev. Dajaku Kinst of Ocean Gate Zen Center and Rabbi Richard Litvak of Temple Beth El. The program will begin at 1:45. All are welcome.

In an effort to keep the cost as low as possible we ask you to pay \$7—but only if you're able. Please RSVP. We want to have enough for everyone, so let us know you're coming. Call the voice mail at (831) 425-5422 ext. or send an email to

60Plus@diversitycenter.org.

Programs are on the 2nd & 4th Monday of each month. 2:00–3:30 PM in the TBE Library. (Come at 1:30 to nosh & schmooze.) Open to the public. Free.

SIMcha!
MITZVAH PARTY SERVICES

DJ/MCs • Lighting • Photo Booth • Dancers • Games • And More!

simcha.SoundInMotionEG.com 831-427-0700



Official Music Providers



**SANTA CRUZ
DERBY GIRLS**

Proud Partners

LIVENATION



Calendar Highlights/Additional News

Brotherhood Brunch

10:00 AM on January 10

Speaker Andrew Goldenkranz, public educator and administrator, will talk about what causes vaccine denial and science denial.

Remember that time when you caught polio? Probably not, because your parents got you vaccinated. A 2015 measles outbreak at Disneyland led to passage of new laws tightening vaccination requirements in California. What began as an ordinary public health effort became one of the most dramatic and contentious fights in the last decade complete with death threats, claims of Fascism, and recall attempts. How did this get so crazy and why is there still such resistance to vaccines? Please join the next Brotherhood brunch featuring Andrew Goldenkranz—TBE member and veteran public science educator—who specializes in understanding why certain scientific issues have become so volatile in the public arena. Andrew has worked at Princeton University, the CDC, and the American Museum of Natural History, as well as throughout California, training teachers in understanding the reasons for science denial, including vaccines, evolution and climate science.

Beginning at 10:00 AM we will nosh on a delicious all-you-can-eat bagel brunch, take care of a little Brotherhood business, followed by Andrew's talk at 11:00, concluding around noon. Recommended donation is \$3 for Brotherhood members, \$5 for non-Brotherhood members.



Mah Jongg with Sisterhood

On Sunday, January 31, from 3:00–6:00 PM, join us for an afternoon of Mah Jongg. Please contact Susan McKay at susanrbm@outlook.com if you would like more information.



Rock Shabbat Service
Friday, February 5, 7:30 PM

Tot Rock Shabbat Vegetarian
Family Potluck Dinner
Friday, February 19, 5:45 PM

Tot Rock Shabbat Service
Friday, February 19, 6:45 PM

Brotherhood Brunch
Sunday, February 21, 9:45 AM

Change Your Record Change Your Life

Thanks to a new law approved in November 2014, called Proposition 47, you may be able to get non-violent felonies like drug possession or shoplifting removed from your record. This could mean:

- A better job
- A new place to live
- Opportunities for college loans, food assistance and more!

This opportunity to change your record will end soon. To find out if you qualify go to <http://myprop47.org/> OR plan to attend the My Prop 47 Clinic on Thursday, January 28, 2016 at Temple Beth El. The event will run from 2:00–7:00 PM.

Here you will meet face-to-face with members of the public defender's office as well as service agency providers who can help to guide you through the paper work and answer any questions.

Please plan to attend and tell your neighbors and friends about this unique opportunity.

For more information, contact Kathy Ruiz Goldenkranz, COPA leader at Temple Beth El, at (831) 588-4608.

New Member Dinner

On November 13, members new to TBE joined with the Membership Committee and many from the Board of Directors for a festive welcome. The room was filled with beautiful autumn flowers, candle light after the Shabbat blessing, the lovely sounds of young children and lively conversations. The buffet table was a veritable feast of beautifully cooked chickens and inventive salads, grains and pastas. Wine and grape juice complemented the meal. After the welcoming from Rabbis Rick and Paula, the attendees enjoyed a Rock Shabbat with new music, lively songs (one from our students), and a parade of gorgeous photos. This was followed by an Oneg in the social hall where new relationships were further forged.

The evening was just the beginning of helping new members feel welcome. The Membership Committee will be putting a colored sticker on name tags so you will be able to identify them and give a special hello.

Library Donations

We appreciate all the forms of support—verbal, fiscal and material—that have been coming our way since we have undertaken revamping the Temple library. Our efforts go faster and further with the help of the community. With a small enterprise such as ours, our ability to grow depends a lot on your generosity.

Donations of books can help build our collection, but only when managed carefully. Unsolicited donations of books left in the library can be more of a problem than a help, often including books we cannot use and taking up much-needed space. We ask, therefore, that you contact us in advance in order to arrange an orderly donation.

We do, of course, welcome donations toward the Temple's Library Fund ... anytime, in any amount, without prior arrangement. Please see our support page at <https://sites.google.com/site/tbeaptoslib/home/support> for more information on ways to contribute to building a better Temple library.

GAYLE'S BAKERY & ROSTICCERIA

IT'S SOUP SEASON

Offering housemade soups with Gayle's own stocks daily. Such as...

TURKEY NOODLE
COUNTRY FARMSTEAD
GOLDEN MUSHROOM

VEGETABLE LENTIL

AND OF COURSE... CREAM OF TOMATO

OPEN 7 DAYS A WEEK, 6:30 A.M. TO 8:30 P.M.

504 BAY AVENUE, CAPITOLA, CA 95010
(831) 462.1200 WWW.GAYLESBAKERY.COM



Serving Santa Cruz Since 1988
Neal Langholz
Broker Associate
831.818.4822
neallangholz@gmail.com
BRE# 00933904

1103 Mission St. Santa Cruz, CA 95060
www.karonproperties.com

BOOKSHOP SANTA CRUZ

- NEW & USED BOOKS
- Kobo E-BOOKS & E-READERS

Bookshop Santa Cruz - 1520 Pacific Ave
Downtown Santa Cruz - 423-0900
www.bookshopsantacruz.com

Morgan Stanley

The Wedeen Hammer Group at Morgan Stanley

Rachel Wedeen, CFP®
Senior Vice President
Financial Advisor

Tiffany Hammer, CFP®
Vice President
Financial Advisor

6004 La Madrona Drive | Santa Cruz, CA 95060
831-440-5200
www.morganstanleyfa.com/wedeenhammergroup

© 2014 Morgan Stanley Smith Barney LLC. Member SIPC.
CRC897541 05/14

Come to a school where everyone knows
your name; where you are invited to
play, star, lead — and belong.

Academic Excellence | Positive Character Development | Creative Self-Expression

Mount Madonna School

2016 Performing Arts Season:

Once Upon a Mattress — January 22-24
Cultural Awareness Performances — March 24-25
38th annual Ramayana! — June 10-12

MountMadonnaSchool.org

Pre/K - grade 12 independent school
20 minutes from Gilroy or Watsonville
Bus transportation available
CAIS and WASC accredited
Nonsectarian

NOURISH

mind body spirit

Because your  bubbe would want you to take care of yourself.

831.359.5335 | www.nourishsantacruz.com

130 Walnut Ave, Santa Cruz | info@nourishsantacruz.com



We're not your average
GROCERY STORE



Check out our classes!



New Leaf
Community Markets

www.newleaf.com

Downtown and Westside
Santa Cruz • Capitola
Half Moon Bay • Pleasanton
Felton • Boulder Creek

LAW OFFICES OF
MICHAEL A. REIN

REAL ESTATE AND
BUSINESS TRANSACTIONS

5610 SCOTTS VALLEY DR., STE. B-514
SCOTTS VALLEY, CA 95066
www.reinlaw.net

PH: (831) 535-8316
FAX: (831) 440-9836
mike@reinlaw.net



522 Soquel Avenue
831-423-4005
www.missionprinters.com

Expect Perfection

It's In our Nature



Protect Your Family
Achieve Peace of Mind

Deborah A. Malkin

**Specializing in
Wills and Living Trusts**

Practice includes Probate
and Trust Administration.
Call for a free initial consultation

Creekside Offices • 2425 Porter Street, Suite 3
Soquel, CA 95073 • 831- 462-9100



Happy is the man ... his delights is in the law of the Lord, and on his law he meditates day and night. He is like a tree planted by streams of water, that yields its fruit in its season, and its leaf does not wither.
(Psalms 1:1-3)

January 2016

Temple Beth El Jewish Community Center • Tevet–Sh’vat 5776

| SUNDAY | MONDAY | TUESDAY | WEDNESDAY | THURSDAY | FRIDAY | SATURDAY |
|--------------------------------------------------------------------------------------------------------------------------------------------------------------|--------------------------------------------------------------------------------------|------------------------------------------------------------------------|----------------------------------------------------------------------------------------------------------------------------------------------------------------------------------------------------|---------------------------------------------------------------------------------------------------------------------------------------------------------|-----------------------------------------------------------------------------------------------------------------------------------------------------------------------------------------------------|--------------------------------------------------------------------------------------------------------|
| | | | | | 1 Erev Shabbat Service 6:00pm  4:43pm Office & Simcha Closed | 2 Shabbat Unplugged Morning Service (Shemot) 10:00am |
| 3 No Temple School | 4 Shofar Deadline | 5 Meditation 7:00pm | 6 Healing Circle 12:30pm No Temple School | 7 Torah Study, Rabbi Paula 12:00pm Primary Sources, Rabbi Shifra 1:00pm Library Open 3:00pm | 8 Meditation Shabbat Service 7:30pm SRFY Ski Trip (out)  4:49pm | 9 Shabbat Morning Service (Vaera) 10:00am (out) SRFY Ski Trip (out) |
| 10 Brotherhood Brunch 9:45am Temple School 9:45am Jewish Parenting Class 9:45am Rosh Chodesh Shvat 7:00am SRFY Ski Trip (out) | 11 Sisterhood Board Meeting 12:00pm Senior Connections 1:30pm | 12 Meditation 7:00pm | 13 Simcha Preschool Fundraiser at Pizza My Heart 4:00-9:00pm Temple School 4:00pm 7th Grade & Hebrew High 6:30pm—Winter Term Begins Women's Wine & Cheese 6:30pm | 14 Torah Study, Rabbi Paula 12:00pm Primary Sources, Rabbi Shifra 1:00pm Library Open 3:00pm Program Council Meeting 7:00pm | 15 Martin Luther King, Jr. Shabbat Service with the Choir 7:30pm  4:56pm | 16 Shabbat Morning Service (Bo) 10:00am SophieRay Levine Bat Mitzvah 10:00am |
| 17 No Temple School | 18 MLK Birthday Holiday Office & Simcha Closed | 19 General Board Meeting 7:00 pm Meditation 7:00pm | 20 Healing Circle 12:30pm Temple School 4:00pm 7th Grade & Hebrew High 6:30pm American Jewish World Service 7:30pm | 21 Torah Study, Rabbi Paula 12:00pm Primary Sources, Rabbi Shifra 1:00pm Library Open 3:00pm | 22 Rock Shabbat Service 7:30pm  5:03pm | 23 Shabbat Morning Service (Beshalach) 10:00am |
| 24 Temple School Tu B'Shevat Celebration 9:45am Tu B'Shevat Seder 5:00pm | 25 Senior Connections 1:30pm Tu B'Shevat | 26 Meditation 7:00pm | 27 Temple School 4:00pm 7th Grade & Hebrew High 6:30pm | 28 Torah Study, Rabbi Paula 12:00pm Primary Sources, Rabbi Shifra 1:00pm Prop 47 Event 2:00pm No Library Hours | 29 Challah Making for Young Families 2:00pm (out) Erev Shabbat Service 7:30pm  5:11pm | 30 Shabbat Morning Service (Yitro) 10:00am |
| 31 Temple School 9:45am Jewish Parenting Class 9:45am Residential Jewish Camp Fair 11:00am Mah Jongg 3:00pm | | | | | | |

Sponsor an issue of the Shofar
Contact Marcia Stein at 831-460-1389
or mstein@tbaptos.org

All events are subject to change. Please check the
Temple website. www.tbaptos.org or call the
office at 831-479-3444 to verify information.