



the shofar

April 2019 ☆ Adar ii–Nisan 5779 ☆ Vol. 52, No 8

TBE SECOND NIGHT COMMUNITY SEDER

Saturday, April 20, 6:00–9:00pm

Join us for a meaningful, uplifting Passover Seder complete with a delicious meal catered by Benjamin Flatauer, joyful singing, community and traditions old and new. To make your reservation, go to April 20, on the TBE website calendar, or call the TBE office at (831) 479-3444.

Interfaith Easter- Passover Dialog

April 3, 7:00pm, at TBE

Join us for our annual Interfaith Passover Study with Rabbi Paula and Deacon Patrick Conway.

Mitzvah Day It's for Everyone!



Sunday, April 28,
9:00am to
12:00 Noon

Help make a
positive impact in
Santa Cruz County
by working together
with other temple members.

Continued on the back cover.

Interfaith Seder with Resurrection Catholic Church

Led by father Romeo Evangelista and
Rabbi Paula Marcus

Thursday, April 11, 6:00pm
Resurrection Catholic Church,
7600 Soquel Drive, Aptos

Join us for our longstanding community collaboration with Resurrection Catholic Church. This is a wonderful opportunity to share our Passover tradition with our neighbors. Please RSVP—go to April 11, on the TBE website calendar, or call the TBE office at (831) 479-3444.



Young Family Passover Seder

Saturday, April 27, 5:00pm
Welcoming and Casual

Join us for a Young Families Project Seder for children and their families. There will be a short service with lots of action and a coloring book Haggadah, appropriate for children of all ages. The temple provides matzah, grape juice and vegetarian matzah ball soup. We would appreciate your RSVP to sclarkson@tbeaptos.org and your help bringing symbolic foods. Also consider bringing a side dish or something your children will eat to share.



Shabbat Services

Friday, April 5

7:30pm Erev Shabbat Service

Saturday, April 6

10:00am Shabbat Morning Service
10:00am Kantor Bar Mitzvah

Friday, April 12

7:30pm Rock Shabbat Service

Saturday, April 13

10:00am ShabbASANA
10:00am Shabbat Morning Service
with Chadeish Yameinu (out)
10:00am Dolinger Bat Mitzvah

Friday, April 19

No Shabbat Service—Erev Passover

Saturday, April 20

10:00am Shabbat Morning Service

Friday, April 26

7:30pm Mizrach Shabbat Service

Saturday, April 27

10:00am Shabbat Morning Service
10:00am Jacobs Bar Mitzvah

TABLE OF CONTENTS

Spirituality • page 2
Synagogue News • page 3
Events/Activities • page 4–6
Youth • page 7
Todah Rabah/General
News • page 8
Donor Spotlight • Page 9
Contributions • page 9–10
April Calendar • page 11
Mitzvah Day • front & back cover

Temple Beth El is a Reform congregation serving the Jewish community
in the greater Santa Cruz area.

Passionate about peace and justice • Creative about prayer • Joyful about tradition

Spirituality

THOUGHTS FROM RABBI PAULA



Rabbi Paula

football—as it’s called here.

Our first stop was Amsterdam. Since I was young and read her diary, I have wanted to visit the house where Anne Frank and her family were hidden. In our religious school production of the play, at 14 years old, I was Anne. I spoke her words and did my best as a kid, to imagine what it must have felt like to be confined in such a small space with her family and four others. Walking through the rooms she walked in and seeing the sights she saw, I was filled with sadness for the suffering she and others endured during World War II. And I was amazed by the words she conjured to express her hope for the world.

While I am traveling in Europe, Rabbi Shifra is traveling in Israel with eight other members of our congregation in solidarity with Women of the Wall as they mark their 30th Anniversary. Women of the Wall (WOW) gathers every Rosh Chodesh (New Moon) at the Kotel (Western Wall). Their main purpose is to attain the social and legal recognition for women to wear tallit, pray out loud and read from the Torah

on the women’s side of the Kotel. But the bigger issue is that the ultra-orthodox minority monopolize the holy sites and dictate how all Israeli citizens can be married and buried. For their 30th Anniversary, WOW’s goal was to gather supporters from all over the world as an expression of how important it is for the Kotel to be a place that all Jews can feel at home. Almost 10,000 ultra-orthodox school children were bussed in to fill the plaza of the western wall and prevent the group from entering. Rabbi Shifra said “most of these extremists were children and many of them had a very menacing mob mentality. They spat at us and shoved us and ridiculed us as we attempted to enter the women’s section to pray.

Many of the people who came to be there with us gave up and turned back. However I did manage to make my way to the center of the Women of the Wall Rosh Chodesh service and it was a very moving experience for me. As I was pressed against a group of teenage girls who were there to block me, we respectfully exchanged our points of view in the eye of the storm as it were.” Despite harassment and even death threats, Women of the Wall continue their work, in conjunction with the URJ’s Israel Religious Action Center. We must never give up hope that Israel will become the example of religious pluralism and inclusion that it was intended to be.

—Rabbi Paula Marcus

Read *Women of the Wall: A Holy Mess* in The Jerusalem Post at <https://bit.ly/2Ct3Mfn>.



TBE member Rose Ashford at Women of the Wall, pictured in The Jerusalem Post.

REIN & REIN

A PROFESSIONAL LAW CORPORATION

MICHAEL A. REIN • TERESA VIG REIN
LLOYD R. WILLIAMS, OF COUNSEL

REAL ESTATE AND
BUSINESS TRANSACTIONS
www.reinandrein.com

550 Water St., Bldg. H
Santa Cruz, CA 95060

Tel 831.607.8833
Fax 831.607.8832

ATTORNEY AT LAW

MILES J. DOLINGER

CALL TODAY
(831) 477-9193
314 Capitola Ave, Capitola, CA

LAND USE • REAL ESTATE • BUSINESS • LITIGATION



Expertise. Efficiency.
Advocacy. Happy Clients.

What you can expect when you put
21 years of land use, real estate and
litigation experience on your side.

www.dolingerlaw.com
Serving all of Santa Cruz County and Beyond

Synagogue News

NEWS FROM YOUR EXECUTIVE DIRECTOR



Tanya Lorien

Passover is coming! We all have our favorite Passover memory, whether it is the year the Seder took for *EVER* and it was rounding on 10:00pm before the meal was served, or the year the dog ate the afikomen. We all have a unique and special story to tell, and re-tell. These are the morsels that make each holiday special, make us smile in the remembering and re-telling—the events that color our lives. The telling and re-telling of stories is a theme that surrounds the holidays—whether it is Purim, Passover or any number of other holidays.

Close on the heels of Passover, comes Shavuot. Then the Bima Accessibility Project starts construction! Although due to unforeseen delays with permitting, we missed our original construction window. But we are well ensconced in all the pre-work and close to posting the exciting plans for all to see in the lobby. Additionally, I am thrilled to announce we found another construction window later this year,

beginning two weeks after Shavuot. June 24 through July, we will bring our accessibility project to fruition.

As if that weren't enough, we have more excitement on the horizon with new Machzors for the High Holy Days. Thanks to your generosity to the 60 for 60 campaign, Rabbi Paula was pleased to be able to finally update our High Holy Day experience with the purchase of the Mishkan HaNefesh: Machzor for the Days of Awe. The new Machzor is available on our website for purchase, at cost, for our membership and the community. And your generosity to the 60 for 60 campaign, combined with Rabbi Paula's passion, has made it possible for us to provide our High Holy Day guests with the new Machzor for use during services. Lastly, if you are so inclined, one of our Mitzvah Day projects will be to unbox the new Machzors, bookplate them and make them ready for use, while simultaneously boxing up our old books for donation.

It seems that no matter where you look, we are looking to the future—evolving and creating the story that is Temple Beth El.

—Tanya Lorien, Executive Director

In The Temple Family

February 1–28

NEW MEMBERS

Joel Gordon

Sandy Davie

MAY THEIR MEMORIES BE FOR A BLESSING



Robert Oshins, beloved father of Cary Oshins, father-in-law of Beth and grandfather of Sam

Rosalyn Sanders, beloved aunt of Barry Marks

Sherry Conable, beloved friend of Phyllis Greenleaf

Edwin Joseph Block, beloved father of Judith Rachel Block

Rabbi Alan Vorspan

Sisterhood Gift Shop

~Passover~

The only place in town for beautiful Seder plates and matzah cloths, kiddush cups, haggadot, novelties for children and hostess gifts. Plus our fabulous selection of tallits, kippot, jewelry and mezuzot, sourced from Israel and around the world.

Passover kickoff is Sunday April 7, 9:30am–12:00pm. Open Monday through Friday 10:00am–4:00pm, Wednesday until 6:00pm. Extended hours continue through April 19. April 22–30, by appointment only—Call Shirley at (831) 685-2710.

Scott Roseman Elected to North American URJ Board

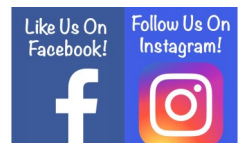
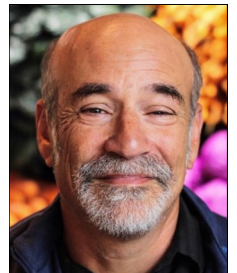
Leadership seems to come naturally to some folks, like our Immediate Past President, Scott Roseman! Scott's leadership turned a start-up grocery business into the natural food powerhouse that New Leaf Community Market is today. Still dedicated, even after selling the business, Scott serves on that board as well as the boards of Jacob's Heart and TBE. Now a new opportunity has arrived as Scott was recently elected to serve on the North American Board (NAB) of the Union for Reform Judaism (URJ). The 253 member board is tasked with guiding the future direction of the Reform Movement in the U.S. and Canada.

Scott will serve a four-year term. This is a first for TBE. The entire board meets in person two times per year and more often in smaller committees. 2020 will see the very first ever NAB meeting held in Israel!

TBE is a member of the URJ, through which we receive support and guidance including the National Federation of Temple Youth (NFTY) of which SRFY is a part, URJ Summer Camps, Religious Action Committee (RAC), the Annual Day of Learning, Biennial, and more.

Scott says, "It's an honor" to be chosen to serve our congregation and the larger Jewish community as a whole. "I am so proud to be a Reform Jew as the URJ is such a forward thinking organization." Scott is most interested in learning and helping the URJ continue to empower congregations and "to share and support one another to build Jewish Community and to be relevant in people's lives."

Thank you Scott for your long-standing dedication and commitment to stellar and innovative leadership!



Events/Activities

Camp Kayetz



Don't miss the fun!

Summer is coming and Camp Kayetz is eagerly awaiting your kids. This summer's session runs from June 17th to July 12th for campers aged 6–12, and CITs aged 13–15. Make new friends and strengthen your old friendships at a traditional, fun-filled camp full of Jewish values and a wide variety of activities. Questions? Contact Camp Director Mimi Guiney at miriambg@sbcglobal.net.

Climate Change Documentary: *Paris to Pittsburgh*

Thursday, April 25, 6:30pm

Cabrillo College, Forum Lecture Hall, Room 450, Admission Free

TBE's Social Action Committee and the Green Team, together with the Cabrillo College Student Sustainability Council, are sponsoring a screening of *Paris to Pittsburgh*, a new National Geographic documentary about climate change. From coastal cities to the heartland, Americans are demanding and developing climate change solutions. As the weather becomes more deadly and destructive, they aren't waiting for Washington to act. Learn their incredible stories in *Paris to Pittsburgh* and be inspired to create change in our

community.

Following the screening, former California Secretary of Natural Resources John Laird, 2nd District County Supervisor Zach Friend, and Director of Regeneración-Pájaro Valley Climate Action Nancy Faulstich, will discuss the film and climate change actions in our state and county.

For more information, look for *Paris to Pittsburgh, Santa Cruz event* on Facebook or contact Michele or Bob Kibrick at kibrick@cruzio.com. The entire Santa Cruz community is invited to participate. Please help us spread the word.

More Wise Aging

with

Rabbi Richard Litvak

Mondays, April 1, 15, 29, & May 6

2:00–3:30pm



We continue to explore the rich wisdom of Jewish tradition and the latest contemporary knowledge focusing on becoming happier, stronger and more resilient as we age. We will use the book *Wise Aging: Living with Joy, Resilience and Spirit* by Rabbi Rachel Cowan and Dr. Linda Thal.

HOW WILL YOU PAY FOR COLLEGE?

STRATEGIES FOR FINANCIAL AID,
SCHOLARSHIPS & OTHER WAYS
TO REDUCE COSTS

STEVE SHAPIRO
Certified Financial Planner®
www.TuitionSolutionsNow.com

831•588•7418



Debra Sloss, LMFT

Licensed Marriage and
Family Therapist

- Anxiety
- Depression
- Parenting
- Relationships
- DBT Skills

Support for Change

Experienced & Compassionate
Counseling

831 426 4800

www.debrasloss.com
Downtown Santa Cruz



Morgan Stanley

The Wedeen Hammer Group at Morgan Stanley

Rachel Wedeen, CFP®

Executive Director
Financial Advisor

Tiffany Hammer, CFP®

First Vice President
Financial Advisor

6004 La Madrona Drive | Santa Cruz, CA 95060

831-440-5200 • 800-488-3436

fa.morganstanley.com/wedeenhammergroup

© 2018 Morgan Stanley Smith Barney LLC. Member SIPC.
BC006 CRC2176129 07/18

Events/Activities

Senior Connections



April 8

An Introduction to the Gokhale Method for Pain-Free Posture with Deb Voisin

April 22

Film Screening of *Big Sonia* followed by Q & A with the director of the film



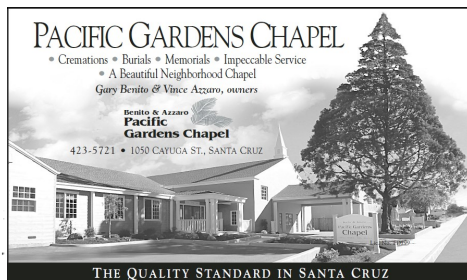
Programs are 2:00–3:30pm in the TBE library. Come at 1:30pm to nosh & schmooze. Open to the public. Free.

The “Egyptian” Tribe? Levites in Egypt and After

with Jehon Grist, Senior Educator, Lehrhaus Judaica

Monday, April 15, 7:00–9:00pm
at the home of
David & Suzanne Silverglate

Inspired by Richard Elliot Friedman’s best seller, *The Exodus*, this salon will explore his thesis about the Levites in Egypt, what they learned from Jethro and the Midianites, and how the earliest Levitical experience affected the origins of Israelite religion, and of Judaism.



Hadassah Santa Cruz Annual Spring Luncheon

Tuesday, April 9, 11:30am–1:30pm
Crow’s Nest, 2218 E. Cliff Dr., Santa Cruz

The community is cordially invited to join SC Hadassah for its annual luncheon featuring Alix Wall, award-winning freelance journalist in the Bay Area, who writes about food, Jews, and love stories.

As a contributing editor for *The J, the Jewish News of Northern California*, Alix regularly writes feature stories about Jews in the world of food. She is also the founder of “Illuminosh,” the not-so-secret society of bay area Jewish food professionals. In addition, Alix is working on a documentary called *The Lonely Child*, regarding a song written in the Vilna Ghetto about her grandmother and mother.

Alix is no stranger to Santa Cruz. A graduate of UCSC she was a speaker at the TBE Cultural Festival. And, her wedding was in Soquel!

Donation: \$35/per person. For reservations contact Sandra Warren at sandra333warren@gmail.com.



Yom HaShoah—Remembering with
Gitta Ryle

Wednesday, May 1, 7:00pm

Congregational Meeting
Sunday, May 5, 9:45am

Simcha Pizza My Heart Fundraiser
Wednesday, May 8, 4:00–9:00pm

Yom HaAtzmaut Shabbat Service
with the Choir
Friday, May 10, 7:30pm

Challah Making
Thursday, May 16, 3:30pm

Brotherhood Brunch “Saving Island
Ecosystems Across the Planet”
Sunday, May 19, 10:00am

bar/bat mitzvahs
birthdays
weddings
celebrations

if it has to be special...

ZENA

(831) 247-7733

Zena@callZena.com

Events/Activities

Sisterhood 2019 Keshet Ruach Retreat: Our Season of Liberation

April 5–7 at Asilomar Conference Center
in Pacific Grove

Surrounded by the beauty of the sea and pines, we will connect with one another as we create, eat, laugh, learn, sing and study together. Our guest scholar will be Rabbi Tirzah Firestone—author, psychotherapist, and founding rabbi of Congregation Nevei Kodesh in Boulder, Colorado. She is widely known for her groundbreaking work on Kabbalah and Jungian psychology, and the re-integration of the feminine wisdom tradition within Judaism.

Pearl & Bead Restraining by Estelle

Professional Hand Knotting for
35 years—Lessons, parties,
classes at Cabrillo

Estelle Drinkhaus

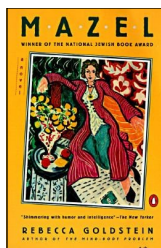
(831) 239-2828

www.pearlestelle.com
pearlestelle@yahoo.com



Mazel

by Rebecca Goldstein



The TBE Book Group will meet on April 30th, at the home of Vicki Hendin, to discuss Rebecca Goldstein's *Mazel*. Murray Baumgarten will be guiding us through this wonderful novel that takes us from a Polish shtetl, to Warsaw, to New York, to an Orthodox enclave in New Jersey. We begin our discussion promptly at 7:30pm.

Concerned About College Costs?

Mark Your Calendar for
Wednesday, May 8, 7:15pm

As college costs keep rising, the challenge for many families is ever greater. TBE member & Certified Financial Planner Steve Shapiro will present “10 Ways to Reduce College Costs” on May 8, 7:15pm, at TBE. Drop off your kids at Hebrew High and stay for the fun! This class is a SRFY fundraiser—all proceeds go to support youth group activities! Please send your \$18 check, payable to TBE, with SRFY Fundraiser in the memo, to TBE. Procrastination is not your friend and hoping for the best is not a plan. Please RSVP to Sarah Clarkson with the number attending to sclarkson@tbeaptos.org.



Art & Play in the Pre & K!

April 12, 9:30 am

Summer Camp

Programs start July 8



- **Preschool – 12th grade**
- CAIS & WASC accredited
- Nonsectarian
- Independent, nonprofit school
- 355-acre campus among a redwood forest and hilltop meadows
- Bus transportation available



MOUNT
MADONNA
SCHOOL
CELEBRATING
40 YEARS

408-847-2717

MountMadonnaSchool.org

Youth

TEMPLE SCHOOL NEWS



Rabbi Shifra

Mitzvah Day is right around the corner, so mark your calendar!

Mitzvah day will be Sunday, April 28th. It is an annual Temple-wide event which takes place from 9:00am–12:00pm. Temple members of all ages participate.

Most participants sign up in advance to join a group in one of the volunteer activities listed on the back cover. These will also be in the Temple Weekly e-mail. Although we prefer that you sign up in advance, you can also get a last minute mitzvah assignment by just showing up. Projects range from beach clean-up to collecting money for the Santa Cruz AIDS project, from spreading mulch at the Simcha playground to helping at the Temple Beth El community garden, and much, much more. So much can be accomplished!

Mitzvah Day is filled with lots of fun and tzedakah for all ages. Participants will gather at 9:00am at the temple to meet their teammates, enjoy a light breakfast, have a quick pep-rally, and enjoy the palpable enthusiasm and momentum of so many people gathered to do good work in the world. Then we will depart for our various mitzvah

locations, where we will work until around noon.

One of the many wonderful aspects of Mitzvah Day is that participants make a positive impact in the greater Santa Cruz area by working with other temple members they might otherwise not have met. This project is based on the highest Jewish values of tzedakah and gimilut chasidim, righteousness and acts of love and kindness.

Please bring a substantial snack and drink for yourself, and clothes appropriate to the task and changing weather at hand. Temple School students do their mitzvah with their parents, while youth group chooses their project as a group. If you have a mitzvah day T-shirt, please wear it. If you have a clean and gently used one that you won't be using, please bring it to the Temple School office. I hope you will take the opportunity to be a part of this important temple event. I will be glad to arrange community service credit for students upon request. If you are interested in joining in on the planning and becoming a team captain, or if you have any questions, please e-mail Sarah at sclarkson@tbeaptos.org.

—Rabbi Shifra Weiss-Penzias

*Temple School fosters a love of Jewish learning in a joyful,
engaging and supportive community.*

Mazel Tots



Sunday, April 14
9:45 to 11:15am
at Temple Beth El

Join in fun Passover themed activities for children five years and under with their families. Members and non-members welcome. Free. Bring a healthy snack.



MAY 2019 SHOFAR DEADLINES

Articles are due April 3. Advertising deadline is April 5. Email text or advertising questions to mstein@tbeaptos.org or call (831) 460-1389. The Shofar is published September–June by Temple Beth El Jewish Community Center, 3055 Porter Gulch Road, Aptos, CA 95003. Phone (831) 479-3444, fax (831) 475-7246. A TBE membership benefit. Non-member subscription rate is \$40/year. Vol. 52, No. 8. Marcia Stein, Editor/Publisher.

Temple School, All School Open House

Sunday, April 14, 11:00am

Open to all families and students who are interested in knowing more about Temple School. RSVP's to sclarkson@tbeaptos.org are encouraged if you are not currently enrolled in Temple School. All grades K–6 currently enrolled in Temple School will get a chance to try the next grade up from 11:00–11:45am.

Kindergarten Open House

A special program will be held in Room 8 for prospective kindergarten students and their parents. Please RSVP to sclarkson@tbeaptos.org if you will be joining us.



TEMPLE SCHOOL, HEBREW HIGH & YOUNG FAMILIES PROGRAM CALENDAR

Wednesday, April 3

NO TEMPLE SCHOOL

Sunday, April 7

NO TEMPLE SCHOOL

Wednesday, April 10

TS grades 4–6, KEF, 7th Grade & Hebrew High

Sunday, April 14

TS Grades K–6, Mazel Tots, TS Open House

Wednesday, April 17

TS grades 4–6, KEF, Hebrew, TS Passover Model Seder, 7th Grade & Hebrew High

Friday, April 19

First Night of Passover

Saturday, April 20

TBE Community Passover Seder

Sunday, April 21

NO TEMPLE SCHOOL

Wednesday, April 24

TS grades 4–6, KEF, 7th Grade & Hebrew High

Saturday, April 27

Young Families Project Passover Seder

Sunday, April 28

Mitzvah Day, NO TEMPLE SCHOOL CLASSES

Todah Rabah/General News



THANK YOU very much to our compassionate congregants who have generously provided dinner to the Santa Cruz River Street Homeless Shelter every Sunday of the year, since 1988, on behalf of Temple Beth El!

Our fabulous February volunteers were: Nancy & Marc Yellin (4X!), Meryl Selman, Rachel Katz and Friends (5X!), Amanda & Leah Miller (2X), Penny Chesluk, Cassandra Sprenger (2X), and Karen Corscadden & Judi Novak's Havurah (5X!).

Our marvelous March volunteers were: Zena Krakowsky with Marcia Meyer and others (5X!), Rachael Katz and Friends (5X!), The Brothers Men's Team (5X!), Catherine & Bob Cooper, Wilma Gold (3X!), Jackie Tuttle, Meryl Selman and friends (5X!) in memory and in honor of Laurie Goldstein.

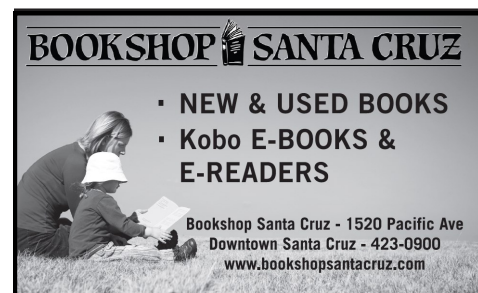
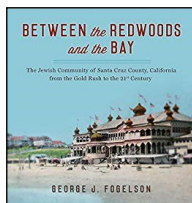
Sign up for the Mazon Project at <https://bit.ly/2vGEWUT>. Inquiries can be directed to Chris Goldstein at orongold@aol.com or Robin Belkin at Robin@MyVeryOwnCoach.com.

Between the Redwoods and the Bay

by historian George Fogelson

Available for \$25

George spoke in February at one of the best-attended Brotherhood Brunches about the Jewish history of Santa Cruz County. He generously donated copies of his newly-released book for Brotherhood to sell to raise funds for Brotherhood. Contact Michael Rein at mike@reinlaw.net if you'd like to purchase a copy.



Check Out Our Haggadahs

Passover is coming and the temple library has resources to help you navigate the festival and make it your own. We have holiday cook books that will delight your taste buds. We have dozens of Haggadahs for every need and taste, from traditional to family-friendly. We even have a few sets of 10 you can borrow for your seder. You can search the online catalog or browse the collection: Haggadahs are shelved at 262.5, holiday guides at 243.2 and cook books at 641.

Temple members can borrow books for 30 days. The self-check-out station allows you to borrow items from the library in 1-2-3 easy steps. Just take the books you want to borrow to the kiosk near the entrance and do the following:

- 1 - Scan the barcode on the front of each book
- 2 - Click "Complete Checkout" when you are done entering
- 3 - Enter your email address (or scan your TBE library card) and the password displayed on the kiosk.

If you run into problems, you can use the paper forms at the kiosk. For questions about borrowing (registration, library cards, etc.) or anything else about the library, contact librarytbe@gmail.com.



Join Brotherhood in 2019

For details, check Brotherhood's webpage on the temple's website at www.tbeaptos.org/brotherhood.html.

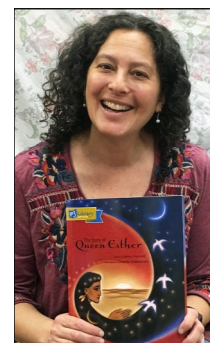
Get to know Congregational Learning Coordinator, **Sarah Clarkson**

Sarah has been working at the temple for over 12 years now, and her responsibilities continue to grow with each year. They now include teaching Kindergarten, helping run Temple School (Wednesdays and Sundays), the TBE van, the B'nai Mitzvah Program and Family Retreat, SC PJ Library and PJ Our Way Programs, Mitzvah Day, Shavuot Family Camping Weekend, TBE Young Families Project, Beth El Bim Bam, and the newly created Beth El Baby Bunch—whew!

Sarah earned her master's degree in Education and will be continuing her education through the Mandel Teacher Educational Institute this November, where she will focus on professional development for our teaching staff.

Originally from Massachusetts, Sarah and both of her brothers have all made careers based in teaching Judaism. Sarah describes herself as being "passionate about building Jewish Community." Rabbi Paula adds that we are blessed to have Sarah's "passion, experience and creativity!" When she is not teaching, organizing or creating programs at the temple, Sarah is wife to Sam and mom to teenagers Maya and Noah. She enjoys her daily yoga practice, walks on West Cliff, hiking, singing and listening to books.

Sarah has many special memories at TBE, but one of her recent favorites was of being asked to blow the Shofar at last year's Rock Hashanah Service! Her office is located just to the right of the back courtyard/fountain doors. Stop by to say "hi" and "thank you!"



Contributions *February 1–28*

Donor Spotlight: Margaret Gordon

We would like to thank Margaret Gordon—long-time temple member, former Education Committee Chair, 2017 Woman of Valor Recipient, volunteer extraordinaire and current V.P. for Fund Development—for many, many years of personal giving, championing the re-establishment of the Legacy Society and tireless work on the Endowment.

Philanthropy is core to Margaret's being. She strongly believes in the concept of sharing what you have, as taught in Judaism, by leaving the corners of your fields for the poor. She believes that the most egalitarian way of giving is through Legacy Society gifts from your estate.

Originally from Five Towns Long Island, Margaret studied English at Harvard, married her Professor and moved out West. The couple soon settled into their careers at UCSC. Margaret was flabbergasted when she learned that the local Jewish Synagogue was “a funky little cinder block thing” with no Rabbi! Looking back, one of her favorite memories is of a young, hippie, guitar-playing student Rabbi who would come up from L.A. once a month to lead services, splitting his time between Hillel and Temple Beth El. “He really took a chance on us” Margaret recalls, by agreeing to become our Rabbi. Margaret's daughter was actually the first baby named in the congregation by Rabbi Rick. Many years later, he also named her daughter's daughter. To commemorate the occasion, Rabbi Rick had matching t-shirts made that read “I was named by Rabbi Rick at Temple Beth El!”

Margaret feels very grateful to Temple Beth El for years of “being there for me through thick and thin” and TBE is extremely indebted to Margaret even more!



BAR MITZVAH CLASS GIFT—MITZVAH PROJECT

A gift
Shoshanah & Joshua Orzech

BIMA ACCESSIBILTIIY CAMPAIGN

A gift
Robert & Catherine Cooper
Steve & Corinne Miller
Kyle Holder
Michael & Toby Alexander
Judy & Fred Dekalb
Barbara Carey
Lee & Molly Jaffe
Bettina Aptheker & Kate Miller
Sharon Tapper & Jim Spiegel
Barbara Sprenger & Kenneth Meshke
Susan Tobias
Lee & Shelley May
Valerie Girsh-Morgan & Robert Morgan
John Glass & Cassandra Sprenger
Marlene Pitkow & Mark Kalow
Doug & Gwen Kaplan
Julia & Milton Cornblatt
Jim & Elise Atkins
Judy Plummer
Victoria & Michael Stone
M. Ian & Julia Elman
In honor of Alan and Judy Levin
Murray & Sheila Baumgarten
In memory of my beloved sister Cindy
Maria Gitin
In memory of Stephen Aron
Elida Aron

BUILDING FUND

In memory of Sam Gerstein, Vicki's father
Vicki Hendin

In memory of Harry Hendin, Vicki's father-in-law
Vicki Hendin

CAMP KAYETZ FUND

In memory of Aaron Belkin and Gwynn Simon
Rabbi Richard & Nancy Litvak

CANDY COONERTY WOMEN OF VALOR FUND

In honor of Gail Levine
Rabbi Richard & Nancy Litvak
Paul & Susan Karz
In honor of Gail Levine for the Woman of Valor Award
Edward Garner & Lynn LeRose
In memory of Cathleen Karz
Paul & Susan Karz

CHOIR FUND

In memory of Ruth Morris, Sayd Kadesh and Joseph Schwartzwald
Robert & Michele Kibrick
In memory of Betty Engelman, mother of Jim Engelman
Rabbi Richard & Nancy Litvak

FILM FESTIVAL FUND

A gift
Marcia Meyer
Joel Gordon
Rabbi Richard & Nancy Litvak
Renee Winter & Paul Roth
Valerie Girsh-Morgan & Robert Morgan
Nina Koocher & Bernard Elbaum
Marion Towar
Aegis Senior Living
Alison Gold
Cindy Rubin & Brian Rosenthal
In honor of Marilyn Rigler
Gail Levine
Sandra Cohen
In memory of David, founder of the Jewish Film Festival
Marilyn Rigler

GARDEN & PARK FUND

In memory of Aaron Belkin and Gwynn Simon
Rabbi Richard & Nancy Litvak

GENERAL MEMBERSHIP SERVICES FUND

A gift
Eric Zamost
Susan & Michael McKay
Azra Simonettie

David Kibrick, EA
(831) 824-4306
info@santacruz-ea.com
https://www.santacruz-ea.com/
Enrolled Agent
Quickbooks® Certified ProAdvisor
Your Santa Cruz Tax Professional
Helping Individuals, Small Businesses & Nonprofits
• Tax Consulting and Preparation
• Accounting Services & Setup
• Business and Online Consulting
• Tax-Related Financial Advice

Contributions *February 1-28*

In honor of Rabbi Paula upon receiving the Tony Hill Award

Nancy & Charles Barr

In memory of Daniel Versman

Lou Versman & Robin Belkin

In memory of Aaron Evan Michaelsen

Jacob & Hila Michaelsen

HOME OF PEACE PERPETUAL CARE FUND

In loving memory of my husband George

Phyllis Rosenberg

In memory of Saul Spodick

Jerry & Terry Spodick

JANET ROTHCHILD ROCK SHABBAT FUND

In memory of Gus Michaelis

George Ow & Gail Michaelis-Ow

In memory of Marvin and Myrtle Spitz

Elaine Spitz Berke

In memory of Kathy Cytron's father Ron

Rabbi Richard & Nancy Litvak

LIBRARY FUND

In memory of Anna Lee Litvak

Rabbi Richard & Nancy Litvak

MINYAN FUND

A gift

Ethel Herring

MITZVAH DAY

A gift

Paul & Martha Jacobson

Amy & David Harrington

TBE Board of Directors members

Richard Josephson, Staff of Life

ONEG FUND

In memory of my wonderful mom, Beatrice Fisher

Nita Lamendola

RABBI RICK & NANCY LITVAK

CULTURAL ACTIVITIES FUND

In memory of Seymour Statman, Nancy's father and Leah Statman, Nancy's sister

Rabbi Richard & Nancy Litvak

RABBI LITVAK DISCRETIONARY FUND

In memory of Rene Raphael's Yahrzeit Harold Raphael

In memory of Fannie Laden

Shirley Marcus

RABBI MARCUS DISCRETIONARY FUND

Thinking positive thoughts

Michael & Toby Alexander

In honor of Rabbi Paula Marcus and her Tony Hill Award

Edward Garner & Lynn LeRose

Edward & Lori Scher

In honor of Rabbi Paula's much deserved award

Yetta Lippman

In honor of Rabbi Paula Marcus. Thank you for all your support.

Imogene Speiser

In memory of Alexander Fox

Laurel Fox & Donald Potts

In memory of Seymour Appleby

Judith Appleby & James Tracey

RABBI WEISS-PENZIAS DISCRETIONARY FUND

In honor of Rabbi Shifra's great contribution

Yetta Lippman

In memory of beloved husband David Marilyn Rigler

SENIOR CONNECTIONS FUND

A gift

Sybil Sokol

In honor of Gail Levine, Woman of Valor

Melody Randel & Susan Kerr

Peg Shemaria-Hedman

Barbara Levine

In memory of Leah and Manuel Maler

Carol Maler

In memory of Harry Sokol

Sybil Sokol

In memory of my dear friend Betty Dietsch

Phyllis Rosenberg

In memory of Paul Garelick, Susan's beloved brother

Paul & Susan Karz

In memory of my beloved brother Eddy

Sonja Aiwohi

In memory of Betty Tracey

Judith Appleby & James Tracey

In memory of Dan's mom Bertha Gold Daniel Gold & Patrick LeCuyer

SIMCHA PRESCHOOL FUND

A gift

Joyce Rubin

Noelle & Greg Brand

Primary Kids Inc.

In honor of Lisa Mendez

Bonnie Fenton

In memory of Roberta Friedman

Paul Drescher

SIMCHA PRESCHOOL AUCTION

A gift

Margaret Gordon

The Parish Publick House Red

Wheel Barrel Inc.

Wilma & Gus Gold

SOCIAL ACTION FUND

In honor of Gail Levine, Woman of Valor and dear friend

Judith Sherman & Rachel Bickert

SOCIAL ACTION/OUT IN OUR FAITH

A gift

Ocean Gate Zen Center

TZEDEKAH-ADAIN LO

A gift

Rabbi Richard & Nancy Litvak

YOUTH SRFY/NFTY FUND

In honor of Gail Levine, Woman of Valor

Howard & Jennifer Kanter

In memory of Jack Shifrel

Gail Levine

In memory of Paul Frommherz

IBM Quarter Century Club

YOUTH SRFY/NFTY FUND-PURIM

CARNIVAL

A gift

Edward & Lori Scher

Falcon Trading Company, Morty Cohen

Stephen & Carol Shapiro

Marcia Meyer

Sandra Goldstein

Wilma & Gus Gold

Amy & David Harrington

Victoria & Michael Stone

Murray & Sheila Baumgarten

Paul & Susan Karz

Rabbi Richard & Nancy Litvak

In honor of Jennifer Kanter, SRFY advisor

Gail Levine

YOUTH SCHOLARSHIP/CAMPERSHIP FUND

In memory of Jovie Struman, mother of Brenda Tuttle and Dale Mueller

Brenda Tuttle

In memory of my sweet nephew Elijah Klein Dennis-Benford

Michelle Dennis

April 2019

Temple Beth El Jewish Community Center • Adar II–Nisan 5779

All events are subject to change. Please check the Temple website. www.tbeaptos.org or call the office at 831-479-3444 to verify information.

SUNDAY	MONDAY	TUESDAY	WEDNESDAY	THURSDAY	FRIDAY	SATURDAY
	1 Baby Bunch 11:00am More Wise Aging 2:00pm Simcha Closed for Spring Break	2 Pilates Class 10:00am Mah Jong 12:00pm Caregiver Support Group 7:00pm Jewish Meditation 7:00pm	3 Women's Writing Group 10:30am Interfaith Easter -Passover Dialog 7:00pm Shofar Article Deadline No Craft Group No Temple School	4 Pilates Class 10:00am Lunch & Learn 12:00pm Library Staffed 3:00pm Women's Song Circle 7:00pm (out) Rabbi Tirzah Firestone Book Signing 7:00pm	5 Women's Retreat at Asilomar 4:00pm Erev Shabbat Service 7:30pm 7:18pm	6 Shabbat Morning Service (Tazria) 10:00am Kantor Bar Mitzvah 10:00am Women's Retreat at Asilomar
7 How to Resolve Conflict Bystander Training/Tent of Abraham 2:00 PM Women's Retreat at Asilomar No Temple School	8 Baby Bunch 11:00am Senior Connections 1:30pm Women's Retreat at Asilomar No Temple School	9 Pilates Class 10:00am Mah Jong 12:00pm Men's Writing Group 2:30pm Jewish Meditation 7:00pm	10 Women's Writing Group 10:30am Temple School Grades 4–6, KEF and Hebrew 4:00pm 7th Grade & Hebrew High 6:30pm Craft Group 7:00pm	11 Pilates Class 10:00am Lunch & Learn 12:00pm Library Staffed 3:00pm Interfaith Seder w/ Resurrection Catholic Church 6:00pm	12 Rock Shabbat 7:30pm 7:25pm	13 Shabbat Service with CY (Metzora) 10:00am (out) ShabbASANA Yoga 10:00am Dolinger Bat Mitzvah 10:00am
14 Temple School Grades K–6 9:45am Mazel Tots 9:45am Temple School and Kindergarten Open House 11:00am Beginning Hebrew Reading 12:00pm Judaism as a Spiritual Journey 12:45pm	15 Baby Bunch 11:00am More Wise Aging 2:00pm Women's Song Circle 7:00pm (out) The Egyptian Tribe? Levites in Egypt and After 7:00pm	16 Pilates Class 10:00am Mah Jong 12:00pm Caregiver Support Group 7:00pm Jewish Meditation 7:00pm	17 Women's Writing Group 10:30am Temple School Grades 4–6, KEF and Hebrew 4:00pm 7th Grade & Hebrew High 6:30pm Craft Group 7:00pm	18 Pilates Class 10:00am Lunch & Learn 12:00pm Library Staffed 3:00pm	19 7:31pm First Night of Passover No Shabbat Service	20 Shabbat Morning Service w/Rabbi Lori (Pesach I) 10:00am Torah Study 10:00am TBE Community Seder 6:00pm Passover
21 No Temple School Passover	22 Baby Bunch 11:00am Senior Connections 1:30pm Passover	23 Pilates Class 10:00am Mah Jong 12:00pm Men's Writing Group 2:30pm Jewish Meditation 7:00pm General Board Meeting 7:00pm Passover	24 Women's Writing Group 10:30am Temple School Grades 4–6, KEF and Hebrew 4:00pm 7th Grade & Hebrew High 6:30pm Craft Group 7:00pm Passover	25 Pilates Class 10:00am Lunch & Learn 12:00pm Library Staffed 3:00pm Passover	26 Mizrach Shabbat Service 7:30pm 7:37pm Passover Yiskor	27 Shabbat Morning Service (Pesach VIII) 10:00am Jacobs Bar Mitzvah 10:00am Young Families Project Passover Seder 5:00pm
28 Mitzvah Day 9:00am	29 Baby Bunch 11:00am More Wise Aging 2:00pm	30 Pilates Class 10:00am Mah Jong 12:00pm Jewish Meditation 7:00pm				

Sisterhood Book Swap in March



TEMPLE BETH EL
JEWISH COMMUNITY CENTER
3055 Porter Gulch Road
Aptos, CA 95003

Non-Profit Org.
U.S. POSTAGE
PAID
PERMIT NO. 13
Aptos, CA

Mitzvah Day

continued

Be sure to arrive at 9:00am and wear your Mitzvah Day t-shirt if you have one. This annual temple-wide event brings together Temple School students, families, and individuals from seniors to youth groupers and preschoolers!

We'll gather at the temple at 9:00am where you will meet your teammates, get your t-shirt, enjoy a light nosh, and make peanut butter and jelly sandwiches for the homeless. In addition, please sign postcards to your legislators about climate change actions with the TBE Green Team before going off to one of the projects listed below.

If you are interested in becoming a team captain, or if you have any questions, please contact Sarah at sclarkson@tbeaptos.org or 479-3444 ext. 218. We look forward to doing Mitzvot together!

Thank you to this year's Mitzvah Day sponsors: Staff of Life, TBE Board of Directors, North Coast Orthodontics, "Spread the Aloha" and Branding Out.

Mitzvah Day Volunteer Project Opportunities

BEACH CLEAN UP WITH SAVE OUR SHORES

1. Local beaches, Rio Del Mar Beach

PUCKER UP FOR KITTENS

2. Create and run a lemonade or hot chocolate stand to raise money for kitten food for the Santa Cruz Animal Shelter

REACHING OUT TO THE COMMUNITY

3. Create a lemonade stand to raise money for the Santa Cruz AIDS Project

PROJECTS AT TEMPLE BETH EL

4. Work in the TBE Community Garden—bring a sunhat, work clothes and garden tools
5. Help spread mulch in the Simcha playground—please bring a wheelbarrow and shovels if you have them
6. Fun TBE projects like putting book plates on our new Machzors

Please register by emailing Sarah Clarkson at sclarkson@tbeaptos.org, or call Sarah at TBE 831-479-3444 ext. 218. Register early to get your preferred activity!

Please register by Wednesday, April 17th



Senior Rabbi Paula Marcus • Associate Rabbi Shifra Weiss-Penzias • Rabbi Emeritus Richard Litvak
Board President Amy Harrington • Executive Director Tanya Lorien
Membership Experience & Program Manager Melissa Sunberg • Shofar Editor/Publisher Marcia Stein