



Temple Emanu-El Temple Times

CELEBRATING 65 YEARS | TEMPLE EMANU-EL | SARASOTA, FLORIDA | FOUNDED 1956

Rabbi's Message: A Gift of Music

Music is a beloved artform. A great song evokes emotion or memory. A beautiful performance can bring us a state of calm or ecstasy. The right melody inspires us to dance or sing into a state of elevation. When music fills our ears, it opens our hearts.

The Hebrew word *sulam* translates to both “musical scale” and “ladder”. This helps us understand how it can link the earth and the heavens. Music can be a connector to the Divine.

Music is central at Temple Emanu-El. During this High Holiday season, we will again experience the majestic tones of our full choir and organ. During recent days, we have been moved by the transcendent voices of our soloists as we prayed together virtually on Shabbat and holidays. In recent years, we have been wowed by jazz and classical musicians filling the air with melody in the Benderson

Family Social Hall. There is nothing cuter than Tot Shabbat kiddos singing “Bim Bam, Shabbat Shalom, Hey!”

The music in our community brings us together.

Music was a great love of Dr. Alvan Morris, who died this July. “Dr. Al” was imbued with the spirit of music since his earliest years. A musician from the age of 3, one of his great joys was sharing his knowledge and passion for music with others. He taught our temple family about Jewish entertainers and composers. As part of our Starfish Initiative, he used his keyboard to generate gigantic smiles on the faces of the young children at Wilkinson

Elementary. He even gave the students recorders as gifts so they could create their own music. Alvan and music were a duet until his final days.

Before he died, Alvan, and his dear wife Suzy, chose to secure his legacy at the temple by establishing the Alvan Morris Music Fund. This generous act of tzedakah will ensure live performances and sacred melodies for years to come. This fund continues Alvan's sacred work of offering music education for the next generation. This gift helps to keep music central at the temple.

If you are so moved and would like to donate to the Alvan Morris Music Fund, please call the office or visit our website.

The Talmud teaches “where there is song, there is prayer” (BT Berakhot 6a). Thank you to Alvan z”l and Suzy for the gift of song. On behalf of the temple, I offer a prayer of gratitude.

Rabbi Michael Shefrin

COVID RELIEF FUND IS AVAILABLE

When Covid-19 initially started, several temple members contacted temple leadership to inquire about how they could help. Due to the caring and generous nature of our members, the Covid Relief Fund was established.

Members gave to the fund and gave generously. For well over a year, money has been given to members who were financially impacted by Covid-19. The fund has provided payments for rent, utilities, car loans, mortgages, medical care, food, and more. Funds are still available! Please contact me so your temple family can help you during these challenging times.

This amazing support was made possible by every person who donated! Thank you. What a beautiful display of tikkun olam!

PS—Since there are remaining dollars in the Covid Relief Fund, if you are inclined to donate, please consider donating to another area of temple that is more in need.

Most sincerely,

Christine Elliott / Executive Director



Rabbi Michael Shefrin

IN THIS ISSUE

President's Message	2
Executive Director's Message	3
New Temple Times Committee	3
Brotherhood	4-5
Sisterhood	6
Endowment Fund Message	7
Celebrating 65 Years	8
A Chat w/Liana Sheintal Bryant	9
New Members Host Gathering	10
Sisterhood Gift Shop	10
High Holiday Food Drive	11
Adult Education Update	12
What's New with the Israel Comm. Library	13
Summer Camp	14
Under 55-ish	16
Time to Rejoice	17
Tragedy in Surfside	17
Photo Galleries	18-25

President's Message: Welcome Back Temple Friends

Bringing you this September message is ever so special. Many of us will be together celebrating Rosh Hashanah and Yom Kippur by either Livestream or in person. To my temple family I wish you a L'Shana Tova. May you be inscribed and sealed for a good and sweet year.

When I assumed the role of president in July 2020, Covid was in full force. By July, the temple had already pivoted, and all religious services and events were being held by either Zoom or livestream. During my first meeting of the board of trustees, I presented the following question to the board: What will be our congregation's narrative after this time? How will we tell the story of our congregation and the time of Covid-19? What will be our story? Well, 18 months later Covid is still here and Temple Emanu-El is stronger and more connected than ever before. Remarkably, we finished the year in great financial shape with a surplus due to the generosity of many of our temple members and good financial management by our treasurer and professional staff. Our rabbis and committees continued to produce and hold great programs via livestream and Zoom. While temples across the country were seeing memberships drop anywhere from 5-25% we at TEE only saw a 2% drop in membership from year to year. Todah Rabah to all those who helped us during these unprecedented times.

Temple Emanu-El's story is one of perseverance, connectivity and commitment to its mission, vision and values. With the help of our three rabbis, board of trustees, executive director, volunteers, and the entire professional staff we have weathered the storm and have proved that we

are stronger together.

Rabbi Glickman in July officiated with the installation of our new board for the years 2021-2022. I'm pleased to present two of our newest trustees and they are Joanne Haiby and Dennis Reens:

Joanne Haiby has been a member at TEE for over six years. She has been very active with FRAC, Adult Education and the Membership committees. She grew up in Long Island, married, and has a daughter. She worked in her husband Bill's pediatric practice for 25 years. She did find time to belong to a reform temple on Long Island where she served in the capacity of a board member and president. That experience will serve her well and benefit us at TEE. When asked why you would like to join the board she said, "Because I think I have something to offer". Yes, the nominating committee felt the same way. Welcome aboard!

Dennis Reens grew up in Queens, N.Y. He is married to Karla and has two boys and five grandchildren. Dennis went to The State University of NY-New Paltz. His professional career lasted 32 years before retiring to Sarasota in 2011. The last 20 years he worked for Merrill Lynch Investment Manager (MLAM) where he held numerous management positions. His last position was Vice President of Sales and



Dennis Reens & Joanne Haiby



Barry Gerber

Product Services. Before joining the board, Dennis was the chair of the Financial Review Committee. When asked why you would like to join the board Dennis said, "I have been a member of the temple for nearly 10 years, and it is time to give back to the temple. With my financial acumen, I can assist in the long-term financial planning of the temple".

Mazel Tov to both Joanne and Dennis and on behalf of the Board of Trustees we look forward to your participation in board decisions.

It is with sadness that I announce that Fae Beloff, temple's Financial Secretary will be relocating to the Denver area to be closer to family in the very near future. Fae has served admirably in that role for the past three years. Fae and her Financial Advisory Committee assists current and prospective members to meet their financial obligations. Fae will be missed for both her leadership and commitment to the job. On behalf of the board, I wish Fae the best of luck and good health in the future. You will be missed.

Barry Gerber
Temple President

Executive Director's Message Do Overs and New Beginnings

The Jewish faith has so many ingenious elements to it. When members share stories with me about how Judaism has inspired, comforted, entertained, and even confused them, it makes me stop and take notice. I find these personal moments are shared with me at just the right time. Recently, when I was worried about one of my children, poof, Phyllis shows up and tells me a story about one of her children that sets me back on course knowing everything is okay. These stories also come with smart business tips. I can always count on Randy to share an effective and enlightening strategy that happens to apply to the current project I am working on. These moments occur often, and I truly consider them to be a perk of the job.

For the past several months, there have been many disappointments, frustrations, and moments of fear. I have also witnessed monumental strength, joy, and support shown for friends and strangers. So many highs and so many lows. The upcoming High Holy Days remind me about new beginnings and do overs. This seems even more relevant since Covid-19 has continued to impact our lives. People are tired and want to get back to a better normal without masks. Planning for and thinking about the High Holidays could not be coming at a better time. The holidays bring reflection and forgiveness, and people strive to do better in the coming year. People are also excited to celebrate and honor longtime traditions. This sense of hope and



Christine Elliott

excitement is what we need, right now, in this moment. Life may look different, but life has continued on and Temple Emanu-El has actually thrived since Covid-19 hit.

The High Holy Day Committee and staff are working hard to bring special and meaningful holidays for each of you. Regardless if you join us in person or via Livestream, your temple family is with you.

Please be on the lookout for your High Holiday tickets arriving in your mailbox. Safety measures are in place for in person services, and it is very important to attend the service you have a ticket for. Updates about Covid-19 will be forthcoming.

L'shana tova u'metukah,

Christine Elliott
Executive Director

Welcome to Our New Temple Times Committee

After many years, Alan Zuckerman decided to step down as the editor of the Temple Times. If you read the Temple Times, you have Alan to thank for organizing the volunteer staff, setting standards, editing the articles, dealing with advertisers, communicating with our temple staff, and having our Temple Emanu-El newsletter be one of the best in the country.

If you live in the greater Sarasota area, or are a member who lives outside of the area, we know that the Temple Times is an important way to stay in touch with our vibrant temple. If you have news, donations to contribute, or some knachas to share, let us know.

We have assumed the responsibility of becoming co-editors. The newsletter format will have the same look but we are interested in offering some new features. We are also requesting more volunteers. If you are a wordsmith, are familiar with Microsoft Word and email, and want to volunteer with us, please contact us.

Eleanor Wachs & Susan Kilman
Co-Editors

William H. Behrenfeld
ATTORNEY AT LAW

TEL: (941) 365-7887 1800 Second St., Suite 790
FAX: (941) 365-9094 P.O.Box 4217
E-MAIL: w.behrenfeld@verizon.net Sarasota, Florida 34230-4217
www.williambehrenfeld.com

On June 24th, just over 60 days ago, the Champlain Towers condo in Surfside, Florida collapsed. The devastation was immense and affected a significant number of Jewish households. I am proud to announce that under the leadership of our Events Programming Director, Don Malawsky, the Temple Emanu-El Brotherhood, Sisterhood, and Social Action Committees joined together to contribute \$1,000 to the relief effort. Thank you, Barbara Peltz and Susan Rosenbaum for your leadership and support to make this happen.

Over the past few months, as hopes emerged and families reconnected, Brotherhood has made significant changes. To better manage events and connect with our members, we have formalized a committee structure for each of our functions—Membership, Events Programming, Correspondence and Finance. We have also added five new Board members who provide youth, diversity and experience.

I am thrilled to introduce you to our new Board:

Rich Fine – President /
Theater Group Chair

Steve Leavitt- Vice President

Burgess Levin – Treasurer /
Investment Club Chair

Bob Meisel – Immediate Past President

Dan Aminoff – Recording Secretary

Howard Schapiro – Corresponding
Secretary / Events Team

Ken Simon – Membership Chair /
Sports Interest Group Chair

Don Malawsky – Events
Programming Chair

Steve Simons – Director /
Membership Team

Michael Lauber – Director /
Events & Food Services

Ken Taksen – Director /
Finance & Sports Interest Group

Andy Hertzfeld- Director /
Membership Team

Neil Klaber – Director / Floater

Joe Ross – Director / Floater

To honor FY'21 Board Members for meritorious service rendered, certificates were bestowed upon:

Michael Lauber – Shabbat-To-Go,
But I'm Back Award

Steve Simons – Perseverance Award

Don Malawsky – Dot the I's
and Cross the T's Award

Burgess Levin – 'All State'
Money Manager Award

Steve Leavitt – 3 B's Award
(Bylaws, Baseball and BBQ's)

Ken Simon – You Want It,
I'll Do It Award

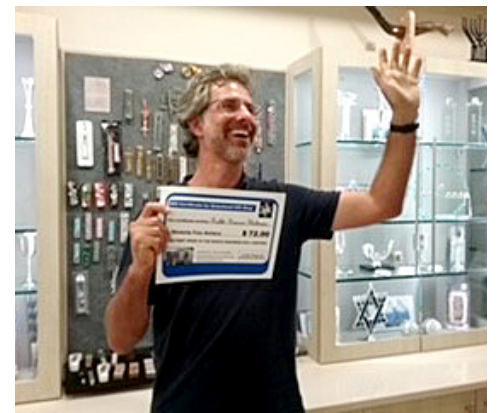
Bob Meisel- 'Energizer Bunny' Award

Neil Klaber- Sukkot Schmoozer Award

And while we are on the subject of awards, since our last edition of the *Temple Times* went to press, we were not able to show you the proud winners of our March Madness Contest until now (see photos).

You may be wondering, as a male Temple Emanu-El congregant, why should I become a Brotherhood Member besides potentially winning prestigious awards? I will tell you---in three words: relationships, participation, and free food. You will build relationships by offering service to our Temple (Greeter/Usher/Shomer), or by connecting with people of similar interests (by joining an Interest Group). We currently have five Interest Groups: Investment Club (Burgess Levin), Theater (Rich Fine), Sports (Ken Simon), Photography (Rich Goldman) and our newest, a Men's Book Club (Mal Schwartz). In addition, we will happily welcome

volunteers who would like to help the board with Membership and Events projects. As a paid Brotherhood member, our Temple picnic is free to you and your immediate family members, and, in addition, you and a guest will receive another free dinner later in the year. Our Events Team has created an exciting calendar for this year, bringing back our traditional Sunday am Bagel Breakfasts, a classical music concert, and our outstanding MLK Tribute. To appeal to all ages, Brotherhood has added a family event in March, a visit to the Big Cat Habitat, and will present a surprise program on May 27. We will inform, educate and feed you; keep an eye out for details in the *Temple Times* and Tuesday email event announcements. Upcoming events include: The Temple Emanu-El picnic on October 9th at 5:30p.m. at the Turtle Lake pavilion. On October 10th from 2-4p.m. there will be a Meet and Greet for temple members who had joined

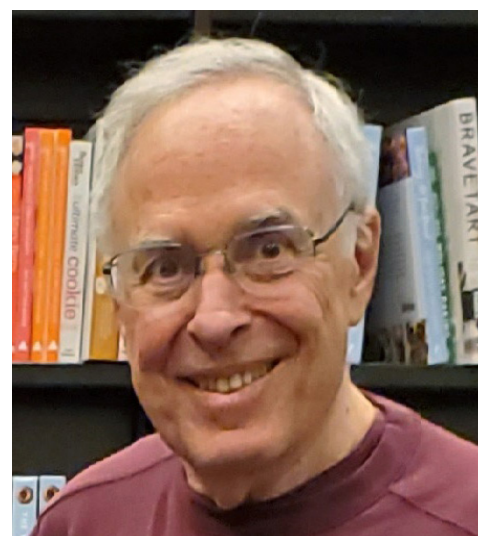


Brotherhood July, 1st, 2021. Brotherhood's new season was initiated with an interesting and informative presentation by Harold Halpern, distinguished attorney and local columnist, who shared his views with us on the current state of Israeli affairs.

Thank you to those who have already responded to our Membership Drive. For those who have not yet

decided, please consider joining. For inquiries about membership, please contact Brotherhood's Membership Chair, Ken Simon, at ksimon7396@aol.com or me at richfine.tee@gmail.com
L'Shanah Tovah,

Rich Fine
Brotherhood President



Rich Fine



Teen Tashlich & Tea

7th-12th Graders



A Special 5782 High Holiday gathering just for teens at TEE's Tashlich. Reflect on the past year and set intentions for the new year with Rabbi Shefrin!

Saturday, September 11th

6:30PM - 7:30pm

**Southwest Corner of
Benderson Park Waterfront**

Register at sarasotateemple.org

Questions?

Contact Savannah

steemyadvisor@gmail.com



WELCOME!

TEMPLE EMANU-EL WELCOMES THE FOLLOWING MEMBERS

Abrams, Marni & Jay & Family
Childers, Timothy & Susan
Cohen, Norman & Diane
Fisher, Wendy & (Mayper, Matthew)
Frank, Dr. Marshall
& Andrea & Family
Klein, Zachary & Young, Lauren
Marin, Eduardo & Mazer,
Barbara & Family
Moore, Marcy
Naiman, Jacob
Peterman, Dr. Francine
Rosman, Ann & (Smith, Jeffrey)
Ross, Irene
Schwartz, R. Malcolm & Carole Ann
Tuite, Maris & Kevin & Family
Unger, Rita
Weiss, Daniel & Grant, John
Wortman, David & Karyn
Zitnick, James "Jim"
& Gabrielle "Gabe"

WELCOME BACK!

Cutler, Dr. Andrew & Lori & Family
Sheckler, Kala

The newly installed Sisterhood Board pictured may be wearing their masks, but every one of us is smiling. Why are we so certain that we are smiling? Board members are happily looking forward to the Jewish New Year when there are fresh starts in people's lives. In this upcoming year, Sisterhood will be filled with many in-person events.

Though we already have a calendar of terrific activities throughout the next year, we will list only a few to tempt those of you who haven't quite gotten around to filling out your membership form, which by the way, has become almost as easy as it can possibly be. One way to become a member is in this edition of the *Temple Times* as well as in the Tuesday Temple e-mail.

Shortly after the High Holidays on October 9, a paid-up member picnic will be held with Temple Brotherhood. Good food, fun and fun-loving people will be present. Though slightly further out, our first day trip is on November 8th for the Newtown Trolley tour which you will want to put on your calendar. (This event was previously cancelled due to Covid.)

Our Sisterhood Book Club just celebrated its first year and what a great year it was! In addition to member moderated talks that allowed us to share insights about the chosen books, we launched a series of Book & Author Chats that was very successful. Our next meeting is Tuesday, October 5th at 1:30pm. We will discuss *The Marriage of Opposites* by Alice Hoffman. The novel is a forbidden love story set on a tropical island about an extraordinary woman, the mother of Camille Pissaro, the Father of Impressionism.

The November and December selections will be *People of the Book* by Geraldine Brooks and *The Book of Lost Names* by Kristin Harmel. The book club will continue to meet on the first Tuesday of the month at 1:30pm. Book club members must be Sisterhood members in good standing. New members are always welcome. For more information, email Karen Androphy at: teebookclub@gmail.com.

Interested in a Pew Plaque or Leaf for the Tree of Life in the Benderson social hall? Please contact Paula Hayden (646-831-5337 or paula.hayden.ny@gmail.com) or Susan Simon (914-393-5745 or spls1117@gmail.com).



The Sisterhood Gift Shop is open before and after services, for special events and by appointment with Alice Cotman (941-359-6451 or alimaecot@gmail.com). You can now purchase a copy of our prayer book, *Gates of Prayer*, at the Gift Shop. All our proceeds from these projects are donated to the Temple Emanu-El Religious School.

We are excited to be leading Temple Emanuel's Sisterhood and can't wait to see you as well as to visit with you in person.

Shanah Tovah,

Judy Fine and Harriette Krasnoff
Sisterhood Co-Presidents



SUNCOAST FLORIST
1227 Beneva Rd. Sarasota, FL 34232
Corner of Bahia Vista & Beneva
(941)365-6407
SUNCOASTFLORISTRY.COM
"Your neighborhood florist since 1980"

Join Brotherhood! Why?

Build Relationships - We're friendly
Serve our temple - Ushering, welcoming
Contribute - to Event Programming
Participate in Interest Groups - Sports,
Investments, Theater, Photography
Or Create your own Interest Group

AND

**If you join by October 9th, you'll get a FREE
family picnic and a FREE brotherhood
dinner. It's easy to join ... go to**

www.sarasotatemple.org

Click on Brotherhood under Community.

Questions? Contact:

Ken Simon or Rich Fine
Membership Chair President
ksimon7396@aol.com richfine.tee@gmail.com



PAY SISTERHOOD DUES

Pay at www.sarasotatemple.org

or by Check

For more information:

teesisterhoodmembership@gmail.com

Karen Androphy

941 402-3750

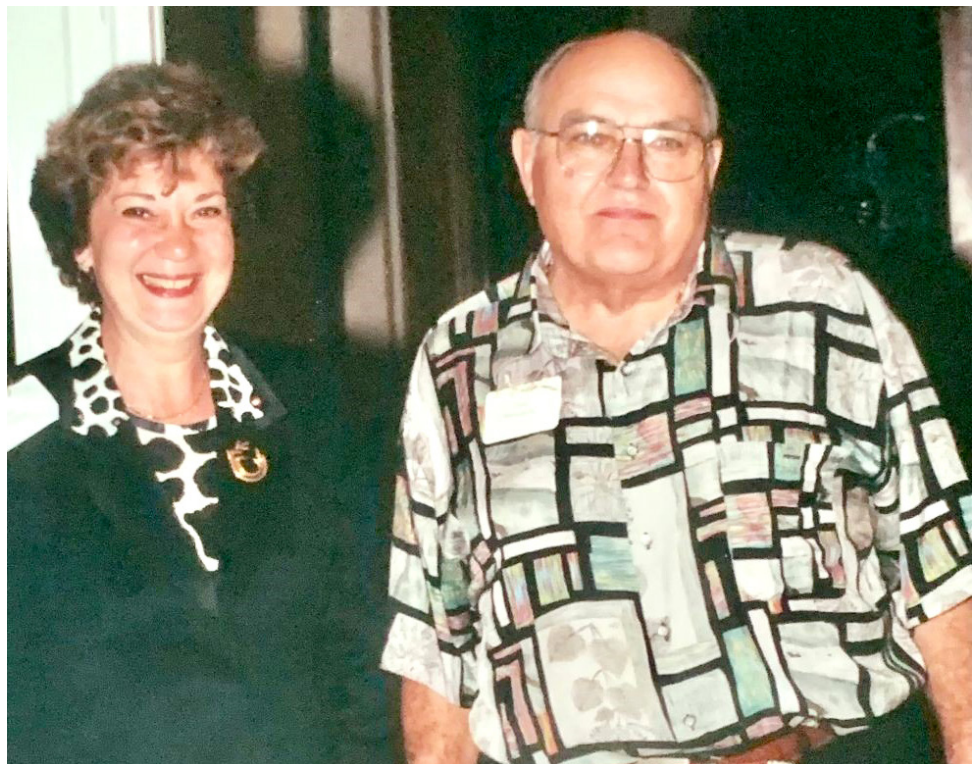
Betty Crane

941 727-9468



We have never felt the sense of family and caring that we have experienced at Temple Emanu-El. The rabbis, staff and members have helped guide us to the fulfilling life we are living today. We have pledged funds to Life and Legacy to provide for the continuation of this wonderful congregational family. We continue to support the temple with our various contributions, but we are looking to the future too! Our temple is too important to fade away. Future generations deserve to benefit as we have!

Michele and Frank Wieckowski



Michele and Frank Wieckowski

This article is part of a series in recognition of Temple Emanu-El's 65th Birthday.

What do the Heisman Memorial Trophy and Temple Emanu-El's Tree of Life sculpture have in common?

The answer: Frank Eliscu, internationally acclaimed sculptor, and resident of Sarasota.

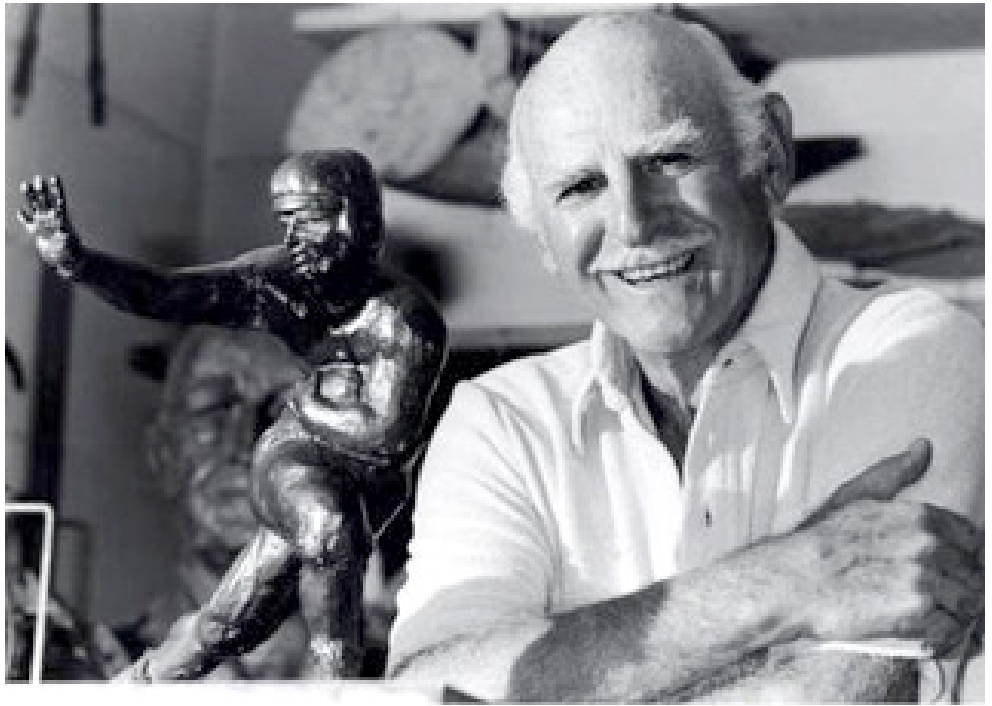
Frank Eliscu (1912-1996) was a renowned sculptor best known for creating the Heisman Trophy in 1935 at age 23. His most prominent sculptures included the creation of the President Gerald Ford inaugural medal, and two national monuments at the Library of Congress and House of Representatives in Washington, D.C.

Sarasota was known for its thriving arts community. Many Jewish artists, writers, and musicians were drawn to Florida's cultural coast including Frank Eliscu. He lived with his wife in Siesta Key until his death in 1996.

During his lifetime, Eliscu created hundreds of artworks. Several pieces celebrated Sarasota's cultural heritage including "The Chase of the Sea Urchin" statute at the Van Wezel, the bronze busts of John and Mable Ringling on display at the Ringling Museum and the Satchmo Award Trophy for the Jazz Club of Sarasota.

Eliscu often created work based on biblical stories including "Noah's Ark" and "Daniel in the Lion's Den".

The Tree of Life (Etz Chaim) is written in the story of the Garden of Eden in the book of Genesis. The phrase also refers to the Torah whose teachings give our lives meaning and beauty. As Proverbs 3:18 teaches-and as we sing whenever we return the



Frank was 23 when he was commissioned to design the Heisman trophy

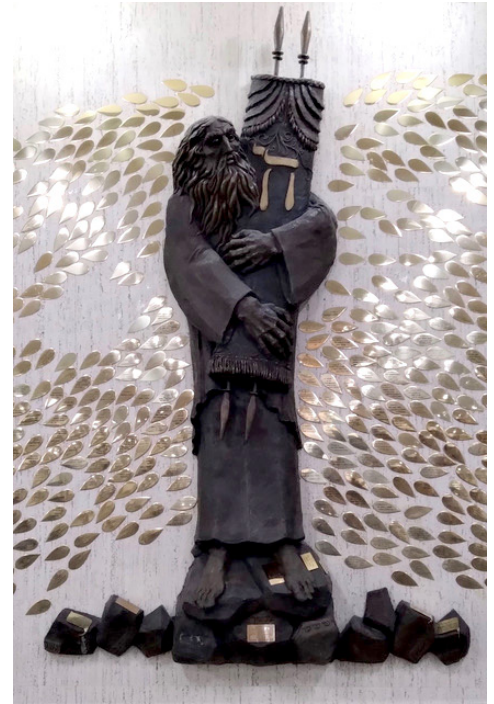
Torah to the Ark: "(Torah) is a Tree of Life to those who hold fast to it."

In 1982 Temple Emanu-El's Brotherhood commissioned Eliscu to create the Tree of Life sculpture for the Benderson Social Hall. Eliscu's vision captures Moses receiving the Torah at Mount Sinai, as recounted in the Book of Exodus. As a tree's strength is dependent on its trunk, the Torah is the foundation of Judaism. It is from this foundation of life that leaves sprout.

Across the decades, our synagogue's Tree of Life has grown and thrived celebrating occasions of pride and joy. Each leaf marks a milestone in our family histories that are recorded for generations to come. Each branch is the collective narrative of our congregants across the decades.

In addition to its beauty, the sculpture is a fund-raising source to support our community. During the High Holy Days, we pray to be sealed in the Book of Life. YOU can choose to be engraved on our Tree of Life.

We encourage you to commemorate a simcha on a leaf, so you are a part



Tree of Life, commissioned by Temple Emanu-El Brotherhood, 1982

of Frank Eliscu's creative vision and Temple Emanu-El's enduring story.

To purchase a leaf, contact Paula Hayden at (646) 831-5337 or Sue Simon at (914) 393-5745 or place your order at the Sisterhood Gift Shop.

Karen Androphy

A Chat with Liana Sheintal Bryant

Liana Sheintal Bryant – a wonderful third-generation member of Temple Emanu-El and the Sarasota Jewish community, whose children have been educated at the Susan Schwaid Early Learning Center and Temple Emanu-El Religious School (TEERS) – shared her history and experiences as a longtime member of the Temple Emanu-El family. She is also the wife of John Bryant, the mother of Woody and Rose, the daughter of Kim and Jon Sheintal, the sister of Mara Daniel, the aunt of Alan, Wyatt, and Oliver, and the niece of Liz and Neil Klaber:

What is the history of your family in Sarasota?

“My paternal grandparents, Rose and Sol Sheintal, retired to Sarasota in 1969 and joined Temple Emanu-El. My parents, Kim and Jon Sheintal, followed them to Sarasota two years later and enjoyed accompanying my grandparents at High Holiday services. Shortly after, they became temple members and enrolled my sister, Mara Daniel (nee Sheintal), in TEERS and me, Liana Bryant (nee Sheintal), in the Temple Emanu-El Preschool (today known as Susan Schwaid Early Learning Center). My maternal grandparents, Phyllis and Aaron Klapman, enjoyed their visits in Sarasota so much that they retired here around 1980; and then my aunt and uncle, Liz and Neil Klaber, followed too about five years later! Eventually, we all became Temple Emanu-El members! When my sister and I got older, we became more involved at the temple and had our kids, Woody and Rose Bryant and Alan, Wyatt, and Ollie Daniel, attend temple Tot Shabbats, the Early Learning Center, and Religious School.

What are some special Jewish traditions you are passing down to your children?

Some special Jewish traditions that

I’m passing down to my children are attending the Temple Emanu-El Early Learning Center and Religious School, making Jewish crafts that get to be enjoyed year after year during holidays (such as place mats my sister and I made when we were younger that we still use at Passover!), and enjoying extended family Chanukah parties (where we open gifts from oldest to youngest!).

What role has the SSELC played in your life and your children’s lives?

The SSELC has played a significant role in my life and my children’s lives! It created a warm, inviting environment where we could begin our Jewish education and become part of a welcoming Jewish community.

How do you stay engaged with the Jewish community and Judaism as a busy young mom?

I stay engaged with the Jewish community and Judaism as a busy young mom mostly through my kids! I have enjoyed the many opportunities for our family to connect with other young families at the temple through Tot Shabbats and Religious School gatherings!

What do you want the community to know about SSELC?

The SSELC is the most caring environment I could imagine for my kids! I am so grateful for it, enjoyed it myself as a child, and loved hearing about the enjoyment my kids felt following in my footsteps!

Liana concludes:

I am happy and proud to say that I went to TEE Preschool and Religious School and so did my children. I was married by Rabbi Brenner Glickman, I had my Bat Mitzvah and Confirmation at Temple Emanu-El. Both sets of my grandparents, my parents, my sister and her family, my aunt and uncle have all been Temple Emanu-El members.

For more information about the Susan Schwaid Early Learning

Center, to learn about enrollment opportunities, or to schedule a tour, please contact SSELC Director Elaine Sharrock at 377-8074 or preschool@sarasotateemple.org. And to share your family’s experiences at SSELC, please contact Rabbi Elaine Glickman!

Liana Sheintal Bryant and her family – husband John and children Woody and Rose



Liana, John, and Woody Bryant – dressed as a magician for a special event at the Susan Schwaid Early Learning Center



Liana and her family – mother Kim Sheintal, father Jon Sheintal, and sister Mara – on the Temple Emanu-El bima for Liana's Bat Mitzvah in 1993

New Members Host Zip Code Gathering in Their New Home

Just because you are a new member doesn't mean you can't host a TEE zip code gathering! Ask Danny Weiss and John Grant who decided to host a 34238 gathering just a few months after moving from New Jersey and joining Temple Emanu-El. In fact, it was more than a zip code gathering, it was also a mezuzah hanging for their new home. Rabbi Michael Shefrin led the group in the blessings while hanging the new mezuzah. Fifteen people in all gathered for a wonderful potluck brunch on Sunday, August 1. There were bagels, lox, egg salad, quiche, fruit, and desserts, as well as iced coffee and champagne punch. Attendees braved the heat and ate outdoors on the lanai due to Covid precautions. A special thanks to Donna and Marc Jonas who brought delicious cheese blintzes. Members old and new enjoyed meeting each other; making new friends and neighbors. If you would like to host a zip code gathering, please contact Kim Sheintal at klapshein@aol.com.



Guest included Jon Herz-Midler and Denise Cotler, hosts John and Danny, Nina Levitt, Betty Perlmutter, Kim Sheintal, Judith and Ike Koziol, Rabbi Michael Shefrin, Rick and Betsy Siegel, Leslie and Michael Podolsky, and Jerry Blumengarten



Danny Weiss (holding Colby) and John Grant with Rabbi Michael Shefrin after hanging their mezuzah.

Sisterhood Gift Shop

DID YOU KNOW...that Reform Jewish Sisterhoods began after WWI, in 1913, but it was not until 1941 when the National Federation of Temple Sisterhoods encouraged the development of Sisterhood-sponsored Temple Gift Shops. "By marketing Jewish ceremonial objects, including many from the new state of Israel, teaching women what these objects were and how to use them, and encouraging them to decorate their homes with Jewish symbols and artifacts, synagogue gift shops advanced some of their fondest goals. Based on a survey done in 1957-58, the sale of Israeli products in synagogue gift shops, more American Jews had an Israeli-made object in their home than had Sabbath candlesticks." *

Temple Emanu-El's Sisterhood Gift Shop has all the Judaic items you desire... and over half of them are made in Israel. Stop by to see our beautiful selection of mezuzahs, jewelry, candlesticks, kiddush cups, hamsas, menorahs, seder plates, shofars, and books. We also sell the Gates of Prayer prayer book, Pew Plaques and Leaves for the Tree of Life.

The Sisterhood gift shop is open before and after Shabbat services, special events held at Temple and by appointment with Alice Cotman at 941-359-6451. 100% of our proceeds are donated to our Religious School.

**Alice Cotman
Gift Shop**

**Thanks to Rabbi Susan Marks and "American Judaism" by Jonathan D. Sarna*



High Holiday Food Drive

Temple Emanuel-el has been the top fundraiser for the All Faiths Food Bank for the past four plus years. Let us continue this important tradition as the needs of many Sarasota/Manatee residents are still impacted by the results of COVID-19. All Faiths is now accepting non-perishable food but is always in need of monetary contributions. "On Yom Kippur, we read from the prophet Isaiah, as he demands in God's name: 'Is this the fast I look for?'" stated Rabbi Elaine Rose Glickman. "God reminds us that the purpose of these holidays is not just demonstrating self-denial, but helping others and to make our world better and kinder and more just. Feeding the hungry is an essential, fundamental commandment, and a natural mitzvah in which to engage when we ourselves are not only fasting but also renewing our commitment to living righteously." We are asking congregants to engage in this special mitzvah by being as generous as you can and support the High Holiday Food drive by either donating online at http://weblink.donorperfect.com/AFFB_TempleEmanu-El or bringing nonperishable food items or a check to Temple Emanu-El at Yom Kippur services. As we fast on Yom Kippur by choice, let's remember those who may not have enough food to eat on a daily basis. Bags will be distributed at Rosh Hashanah services. For more information, contact Susan Rosenbaum, Social Action Committee Chair: srosenbaum28@gmail.com.

Social Action Committee (SAC)



SCHEDULE OF SERVICES

SEPTEMBER 2021

Friday, September 3

Erev Shabbat / 7:15 pm

Monday, September 6

Rosh Hashanah Evening
Services / 6 pm & 8 pm

Tuesday, September 7

Rosh Hashanah Morning
Morning Services / 9 am & 11:15 am

Tuesday, September 7

Rosh Hashanah Family Service
& Social Gathering / 1:30 pm

Wednesday, September 8

Rosh Hashanah Study & Discussion
Second Day of Rosh Hashanah / 10:30 am

Friday, September 10

Erev Shabbat / 7:15 pm

Saturday, September 11

Tashlich & Havdalah Service at Van Wezel and
Benderson Park by the water / 6:30 pm

Sunday, September 12

Cemetery Service at Palms Memorial / 12 Noon

Wednesday, September 15

Kol Nidre Service
Services / 6 pm and 8 pm

Thursday, September 16

Yom Kippur
Morning Services / 9 am & 11:15 am
Family Service / 1:30 pm
Torah & Yizkor Memorial Services / 3:15 pm & 5 pm
Ne'ilah Concluding Service / 6 pm

Friday, September 17

Erev Shabbat / 7:15 pm

Saturday, September 18

Elizabeth Lurie Bat Mitzvah / 10:30 am

Friday, September 24

Erev Shabbat / 7:15 pm

Monday, September 27

Last Day of Sukkot
Service with Yizkor / 10:30 am

Friday, October 1

Simchat Torah Shabbat / 7:15 pm

Adult Education Update

On July 1st we became co-chairs of the Adult Education Committee. We are fortunate to have the support of the excellent past co-chairs, Ellen Zipin and Dr. Janet Hiller as well as the experienced members of the committee. The TEE staff has been very helpful in this leadership transition.

We have three programs set for the near future. In October, we will present a program on the making of the movie Ragtime. November brings the return of Soul Collage. In December, Rabbi Brenner Glickman will present a topic to be determined. In addition, we have our ongoing movie series and Hebrew classes. We hope that you will continue to support the programs during the next year.

We are excited for this opportunity and look forward to meeting many of you.

Judith Koziol & Paula Reich
Co-Chairs



Hebrew Classes

Fall 2021 VIA ZOOM

***You must register and pay online
at www.sarasotatemple.org***



Evie Shen-Tal



\$50 for Temple Members
\$60 for Non-Members

Fee is for entire course.
Dates are subject to change.

Register at:
www.sarasotatemple.org

ZOOM
INSTRUCTIONS WILL BE
SENT TO YOU VIA
EMAIL.

READING CLASS

Fridays at 9:15 am

September 3, 10 & 24
October 1, 8, 15, 22 & 29

CONVERSATIONAL LEVEL 4: ADVANCED

Tuesdays at 9:15 am

October 5, 12, 19 & 26
November 2, 9, 16 & 23

CONVERSATIONAL LEVEL 3: UPPER INTERMEDIATE

Tuesdays at 10:15 am

October 5, 12, 19 & 26
November 2, 9, 16 & 23

CONVERSATION LEVEL 2: LOWER INTERMEDIATE

Wednesdays at 7:45 pm

October 6, 13, 20 & 27
November 3, 10 & 17 and December 1

CONVERSATION LEVEL 1: BEGINNERS

Wednesdays at 11:45 am

October 6, 13, 20 & 27
November 3, 10 & 17 and December 1

OUR MEMBERSHIP EXTENDS DEEPEST SYMPATHY

Dr. Ira Azneer, Dr. Uzi Baram, Fred & Betty Crane, Marc Feldman, Barbara Gerber, Noah Hochberg, Bette Hoffman, Marty Katz, Neil Klaber, Tess Koncick, Ben Kunkel, Mollie Lafferman, Ellen Lenk, Dr. Terry McDonald, Suzy Morris, Denise Novick, Susan Schlossberg, Jeremy Schwimmer and their families on the death of a loved one so precious and dear.

Our membership mourns the loss of Bob Molino.

May God's strength and our support bring comfort to one and all.

What's New with the Israel Committee?

Despite the COVID restrictions, Temple Emanu-El's Israel Committee was very busy with numerous Zoom presentations in 5781 (2020-2021) and look forward to hosting many more presentations in 5782 (2021-2022)! We are also excited to coordinate several events specifically relevant to the Israel trip participants, and to help these lucky travelers learn more about the Jewish State and prepare for their trip of a lifetime.

In 5781 the Israel Committee hosted the following Zoom presentations: The Kibbutz in Today's Israel, A Virtual Tour of Israel, Volunteering in Israel, The Empires of Israel, Israeli Innovation with Adult Education, Jewish National Fund's Beer Sheva, Israeli Music: Past & Present, and Israeli Cooking Demonstrations. These wonderful events were overseen by Israel Committee members and kept our Temple Emanu-El family connected to one another and to Israel during the difficult days of COVID. As 5781 draws to a close, we will enjoy a Zoom presentation on The New Israeli Government in partnership with the Brotherhood. In addition, the Israel Committee hosted the Israel Shabbat and (take-out) dinner in partnership with the Sisterhood. The Israel Committee also worked with the Sisterhood and the Religious School on the Peace Tile project, raising awareness about the Peace Wall on the Gaza border and building bonds between our students and the Israelis living in the Netiv Asara area.

For 5782, the Israel Committee is planning many exciting presentations (most of which will be by Zoom): October will bring programs on the Israeli-Palestinian Conflict with Rabbi Glickman; Easy Hebrew for the Israel trip participants with Bruce Kleinberg; and a session introducing Sarasota's Israeli Sister City Tel Mond with Rabbi Jonathan Katz. In November, we will enjoy learning about Israeli High Tech. In January, there will be presentations on the newly renovated Diaspora Museum, now called the Anu Museum; the Yom Kippur War as related by an IDF physician who was there; and a lecture on the first Israeli prime minister David Ben Gurion, which will be particularly relevant to the Israel trip participants. Our popular Israeli cooking demonstrations will return in February, along with a presentation on Israeli cuisine. Also in February, there will be a program by a Technion scientist on cancer research and a tour of the Yitzhak Rabin Center. Spring will bring two more wonderful events: a joint presentation with the Jewish National Fund on their programs to serve disabled Israelis in April, and – at the end of May – a beautiful and

inspiring wrap-up of the religious school's participation in the Peace Tile Project.

Flyers and more information about these events will be available as the dates get closer and the Israel Committee looks forward to your participation and continued engagement with and support of our beloved homeland. We also warmly invite all Temple Emanu-El's Zionists and lovers of Israel to get involved with this important committee. If you are interested, please contact Israel Committee chair Nina Levitt at nina.g.levitt@gmail.com. L'hitraot!

Nina Levitt

Library

It has been a pleasure returning to in person services and the Opher Library. I would like to take this opportunity to review some information about the library.

We have books, CDs and DVDs, all pertaining in some way to Jews and Judaism. We have books on music, cooking, sports biographies, religion, humor, history, fact, and fiction. Everyone is welcome to come in and look around. If you have a library card, you can even borrow the books and other material. Please note, you need a TEE library card, not a public library card.

How do you get a TEE library card? Simple! First, one must be a member of Temple Emanu-El. Second, come fill out a library card form in the library, or see me after services and I will create one for you. That is your passport to some excellent books and resources.

Many members already have library cards. If you have moved, changed your phone number or e-mail, please notify me so I can correct your information in the library computer.

Some of you have asked me if you can donate books. The answer is a definite maybe! The books need to be in some way related to Jews and Judaism. They must be in excellent condition and current (published in the last twenty years). If we have duplicates, they will go on our sales rack, which are bursting at the seams with books. We will be having a book sale in November, but you do not have to wait until then. All the "For Sale Books" are \$1.00; please consider purchasing a few. The money goes directly into the library fund for the purchase of more books.

Finally, I need help in the library. Contact me at 941-922-4517 if you would like to volunteer, or if you have any questions or suggestions.

Wishing everyone a happy and healthy New Year.
Happy Reading!

Rosalind Lieberman
Librarian

Summer Camp at the Susan Schwaid Early Learning Center

Summer camp was a blast! We were thrilled to share joyful Jewish learning with our little ones! It was such a delight to see happy, smiling faces and to hear laughter and singing in our classrooms again. It is always incredible to see the amount of growth and learning that happens when children interact with their peers in a loving, caring, and stimulating environment. Teachers carefully planned week-long thematic units for the children to learn from and enjoy.

Our camp started out by bringing books to life. The older students enjoyed acting out stories and practiced the skill of sequencing while the younger children enjoyed listening to stories and playing with story-related puppets in the family living center. During Dinosaur Week, the children experienced planting flowers and watching them grow (for the herbivorous dinosaurs of course!), drawing and decorating dinosaur pictures, and doing creative movements to dinosaur music. Construction Week allowed some children to build their very own inter-state highways with traffic signals. Ms. Debbie shared blueprints with her students, and they were able to draw blueprints of their own.

During World Week, staff shared about their own cultural experiences. Morah Sabrina shared about Egypt (where she was born) and Israel (where she once lived). She read a story about pyramids and some children even got to make their own pyramid. Ms. Millie read stories in Spanish and taught the children how to speak several Spanish words.

Robot Week was a big hit with each class learning about and building robots. The children really enjoyed becoming mini-chefs during Cooking Week! During Cooking Week, the children read stories about healthy eating, learned chef related vocabulary (such as sauté), ran their own restaurants within the classroom, and were able to make their own snacks to enjoy or take home.

Miss Emma led our kindergarten readiness class to help prepare children attending kindergarten this fall. Students practiced many skills and excelled in their learning.

While experiencing great fun, all of the children gained academic and social skills throughout camp thanks to our phenomenal teachers! We greatly



enjoyed having all of the children and their parents join us this summer! Thank you to the Temple for their continued support of the important work we do at the Susan Schwaid Early Learning Center, and a special thank you to Executive Director Christine Elliott for coordinating the SSELc's re-opening efforts. To learn more about our special school or enroll your child, contact me at 941-377-8074 and preschool @sarasotateemple.org.

Elaine Sharrock
SSELc Director

Will We See You at Lunch with the Rabbis?

Wonderful monthly program
currently being held via Zoom

Scheduled Dates

Wednesdays,
Sep 1st, Oct 6th and
Nov 3rd @ Noon



We Serve All Families

In this time of need, know who to call.

Our firms will serve your family with all precautions,
CDC guidelines, and compassionate care.

Dignity Memorial® Robert Toale & Sons

Dignity®

— LIFE WELL CELEBRATED® —

RTSFunerals.com

Not affiliated with Toale Brothers Funeral Home or Toale Brothers Inc.



Susie, Jason, Jeff, Hannah, Robert and Debbie

If you or a family you know would like to discuss options for services, cremation, Life Story Celebrations, or returning to their home state up north, we have answers available.

Announcing the development of a NEW FACILITY IN LAKEWOOD RANCH located near the corner of Lakewood Ranch Blvd. and 44th Ave.



PALMS MEMORIAL PARK
170 Honore Avenue, Sarasota, FL 34232
941.371.4962 • Fax 941.295.7009



WIEGAND CHAPEL
7454 South Tamiami Trail, Sarasota, FL 34231
941.921.5755 • Fax 941.923.0113



MANASOTA MEMORIAL PARK
1221 53rd Avenue East, Bradenton, FL 34203
941.755.2688 • Fax 941.201.1640



Gerry Ronkin
Jewish Liaison



At Aviva, our residents do more than call our community home. They live here, with purpose and meaning at every turn. Embracing the beauty of Sarasota and our 27-acre campus. Curating a thriving arts and cultural scene. And ensuring your peace of mind with loving staff in a safe and secure environment—upholding the highest COVID safety standards. [Visit us at AvivaSeniorLife.org](https://www.avivaseniorlife.org)



1951 N. Honore Ave. | Sarasota, FL 34235
941.377.0781 | [AvivaSeniorLife.org](https://www.avivaseniorlife.org)

Independent Living | Assisted Living | Memory Care | Skilled Nursing & Rehabilitation

Assisted Living Facility #8951

Under 55-ish

Remember the feeling of going somewhere new and hoping you'd meet people you could connect with? Praying that it wouldn't be awkward. Wondering if there would be cliques of friends' groups? Or if you'd be invited to sit with someone rather than having to ask?

These fears are quickly dampened when guests and new members walk through the doors at Temple Emanu-El. Our congregation has made a reputation for being welcoming. Our theme of the year is "You Belong Here". No one who comes as a guest or new member leaves unknown.

But what happens after that? The Membership Committee welcomes them, guides them to weekly Friday Shabbat services, invites them to religious school events with their families, to Havurahs, movie or book clubs, and to various volunteer opportunities.

Some members fall in between these different groups. The Under 55-ish Task Force was assigned to figure out how the temple can best serve this age group and keep them engaged since this demographic wanted ways to be social with members in a casual, fun way.

The group consisted of members in the middle and young adults age category. The task force was led by Leslie Podolsky and Michelle Pearson with the help of Joni Steinberg.

Three Outdoor Game Days were hosted by the group over the summer. These were family friendly events. "TEEM Plugged In" was created to take this concept to a different platform - social media. TEEM stands for Temple Emanu-El Member and Plugged In represents our digital age. This is a private Facebook group for members who are young adults, members in the middle or under 55-ish.

We love tradition. We love the multi-generational camaraderie found among our temple community. However, we know the positive impact that creating meaningful relationships with peers at similar life stages and interests has on a community. We know that staying current is important to the longevity of our temple. Being in touch virtually is priceless in that effort.

In the Facebook group, we share news, recipes, ask questions, and anything else related to Temple Emanu-El or Jewish life in general. The Facebook Events feature within the group allows members to receive notifications for any TEE event that interests them. Each new member is warmly welcomed with a post and asked to share a little bit about themselves. It reflects TEE's spirit! Rabbi Shefrin occasionally pops in with a live video.

Jewish memes are posted. Questions are answered. Mazel Tov is given with pictures of exciting life events. One member wanted to go on a fishing trip and after several comments, a date was chosen, and a charter was formed within the hour.

The connection found in the group is a testament of the care and commitment of each member to the warm, welcoming, and spirited ways of our congregation.

Savannah Ross
STEEMY Advisor



Heidi and Aaron Lurie playing cornhole



Ping Pong Doubles, Ellis Adler (left) and Joe Ross (right)

Time to Rejoice: Sukkot and Simchat Torah Are Coming!

Did you know that the Torah commands us to rejoice on Sukkot? It's a fun and delightful mitzvah to fulfill – and Temple Emanu-El makes it easy with joyous and meaningful Sukkot celebrations! Whether it's the Brotherhood building the Temple sukkah, the religious school's sukkah-decorating marathon and all-school Sukkot celebration, the preschool's special morning in the sukkah, the first-ever Teen Sukkot Dinner organized by our STEE-MY youth group and director Savannah Ross, dinner in the sukkah and learning under the stars, or just finding a quiet moment to enjoy and reflect in the Temple sukkah by yourself or with family and friends, you will have plenty of in-person and virtual opportunities to celebrate this wonderful holiday with your Temple family. Please flip through the *Temple Times* and watch your Tuesday email Message from the Temple for information about these and other Sukkot events.

Even after Sukkot has concluded, the rejoicing continues with Simchat Torah – which literally means “Rejoicing in the Torah” – as we mark the end of the cycle of Torah readings, and immediately begin again. This is also the season for welcoming our wonderful new religious school students with a beautiful and festive Consecration ceremony. What a joyful expression of our love and gratitude for the gift of Torah! Again, please watch your inbox for details and updates about our upcoming Simchat Torah celebrations.

Chag Sameach – Happy Sukkot and Happy Simchat Torah! We look forward to sharing these special days together.

Tragedy in Surfside

Sadly and tragically on June 24 the 12 story Condo, Champlain Towers South, in Surfside, Florida, just north of Miami Beach, collapsed causing terrible loss of life and entire possessions to countless residents and their families. This tragedy headlined the news for many days as pictures and memories of missing loved ones were broadcast around the world. As every day passed, it became clear that recovery was the only outcome for those missing. The lost souls included parents, grandparents, children and other family members. Contributing to the recovery efforts was a team from the Israel Defense Forces who joined with other first responders to recover victims of the collapse.

Under these terrible circumstances, the Greater Miami Jewish Federation (GMJF) created an Emergency Assistance Fund to provide financial and other assistance to the survivors and their families. Using this funding vehicle, the Temple Emanu-El Brotherhood, Sisterhood and Social Action Committee enthusiastically joined together to contribute \$1,000 to the Fund to assist victims. While it was estimated that a third of the occupants of the condo were Jewish, the GMJF would use the donations it collected to assist all victims of the tragedy while absorbing all administrative expenses.

There is still a great need for donations to the Fund. Individual donations may be made to the Fund for the victims by going to the excellent GMJF website which specifies how the donated funds will be used and the process to make individual contributions. Assisting in the collection of donations were Barbara Peltz and Don Malawsky with considerable assistance from the temple office staff.

Sarasota Arthritis Center



Ronald I. Weitzner, M.D.
Richard A. Yonker, D.O.
Jeffrey L. Kaine, M.D.
Yoel Drucker, M.D.
Robert L. Ikeman, M.D.
Tatiana Huguenin, M.D.
Bradley Weitzner, M.D.
Jaishree Manohar, M.D.
Cindy V. Johnston, M.D.
Kimberly Lyn Shue, M.D.
Jesse Boodoo, M.D.

1945 Versailles St.
Sarasota, Florida 34239
941-365-0770
941-955-8984 fax
www.arthritiscenters.net

*Offices in Bradenton,
Venice and Englewood
are listed on the reverse*

Our other offices:

*Sarasota
Arthritis Research Center*
1945 Versailles St., Suite 101
Sarasota, FL 34239
941 366-1244

*Venice
Arthritis Center*
411 Commercial Ct., Ste. D
Venice, FL 34292
941 484-4409

*Bradenton
Arthritis Center*
5308 4th Ave. Circle East
Bradenton, FL 34208
941 567-4021

*Englewood
Arthritis Center*
684 S. Indiana Ave.
Englewood, FL 34223
941 475-3839

Our Rabbis Return to Aviva Senior Living



Before the covid-19 pandemic, Temple Emanu-El Senior Rabbi Brenner Glickman and Associate Rabbi Michael Shefrin enjoyed regular monthly visits with our congregants at Aviva Senior Living. The group would meet indoors for lunch, learning, conversation, and fellowship. In 2020, these gatherings stopped.

Although the early months of 2021 brought our rabbis and Aviva residents back together for small, outdoor, socially-distanced meetings, these only set the stage for this summer – when Rabbi Glickman again joined a room brimming with Aviva residents for a full reunion. At their first gathering at the end of May, three of the attendees were over 101 years old!

“It was the first time we met inside in over a year,” Rabbi Glickman exulted. “We were elated. The Talmud teaches that when you see an old friend after a long time apart, you should say the Shehechyanu blessing. We did, with gusto and a lot of pent-up emotion.”

Rabbi Shefrin reunited with the Aviva residents later that summer as well. “How good it is! How sweet it is!” he remarked. “To be back together at Aviva with our members was a true Hinei Mah Tov moment.”

With Temple Emanu-El’s rabbinic staff and participating Aviva residents fully vaccinated and able to meet safely, our rabbis were delighted to resume regular indoor gatherings. “It was so wonderful to be together again,” Rabbi Glickman said.

For more information about our rabbis’ visits to Aviva, and other joint programming between Aviva and Temple Emanu-El, please call 371-2788.



Event organizer Sylvia Gross and Louise Bick



Joan Zaroff and Helene Rosenberg



Walter and Carole “Pip” Ulin



Rabbi Glickman thanks event organizer Ellis and Bernice Lasberg



Rabbi Glickman greets Fran Guberman, age 102

Blessing of the Animals



“Blessings of the Animals” was back in-person (and in-pet!) as Temple Emanu-El celebrated our much-anticipated signature program honoring the divine gift of animal companionship on Sunday morning, June 13. This wonderful event was chaired by Alice Cotman, Kim Sheintal, and Rabbi Elaine Rose Glickman.

The original pet blessing event in the Sarasota-Manatee Jewish community, the 12th annual “Blessing of the Animals” brought together dogs and cats – and their humans – for friendly socializing before Senior Rabbi Brenner Glickman and Associate Rabbi Michael Shefrin’s inspiring talks about animals in Jewish tradition and song leader/soloist Barbara Mazer’s rousing, delightful music. Each pet also received an individual blessing and had a family pet portrait expertly taken by Alice Cotman.

What a special morning!

Rabbi Glickman offered a blessing to new members Ed Marin, Barbara Mazer, and their family’s dogs



Ron and Shari Paler brought their dog Romeo for a blessing from Rabbi Glickman



Rabbi Shefrin offered a blessing to new member Diane Cohen and her dog Cocoa



Michele Wieckowski brought her family and her dog Patsy to receive a blessing from Rabbi Shefrin

A Lively Summer at Temple Emanu-El



The Temple Emanu-El family kept busy and connected through meaningful programming for all ages during these summer months! We enjoyed a mix of in-person events – including our first-ever “Havdalah and Fireworks” to get in the Fourth of July spirit, complete with an on-site fireworks display orchestrated by Rabbi Glickman; the return of the Tu B’Av RomCom movie night featuring Dirty Dancing and beautifully facilitated by Rabbi Mimi Weisel and Linda Joffe; several outdoor Wide Open Shabbat services and the exciting return to Shabbat services in the sanctuary; and lots of programs for our young families – and virtual events such as weekly Torah study; a moving observance of Tisha b’Av with Rabbi Shefrin and Director of Education Sabrina Silverberg, MARE; the annual Night of Jewish Learning, a Tikkun to celebrate Shavuot and God’s Revelation of the Torah at Mount Sinai; and programs ranging from a Zoom with recent oleh to Israel Ken Marsh to a study of golems from biblical to modern times. Many thanks to the wonderful, dedicated Temple staff, leaders, and volunteers for making this another special summer – and to Kim Sheintal and Ken Simon for these great pictures from “Havdalah and Fireworks.” These photos certainly represent the shine and sparkle of Temple Emanu-El and our Temple family!



**Brotherhood and Sisterhood
present the TWELFTH ANNUAL
TEMPLE EMANU-EL PICNIC**

Turtle Beach Picnic Shelter
8918 Midnight Pass Rd, Sarasota (Siesta Key)
Saturday, October 9, 2021 from 5:30 PM to Sunset

Included: Hamburgers, Hot Dogs, Veggie Burgers, Drinks,
Salads, Dessert, Games, Beach Sunset,
Havdalah Service

**FREE for Brotherhood and Sisterhood Members and their
immediate families *with advance registration by October 7***

**COST for non-Brotherhood and non-Sisterhood Members
and for registration after October 7:**
\$10 for each adult
\$5 for all children 5-12 years old
Free for children under 5

**Please bring a salad, side, or dessert to share
(No glass containers, please)**

Register online at sarasotatemple.org by October 7

**Contact: Steven Leavitt at (941) 587-8944
or email: Leaveit2Leavitt@gmail.com**



Temple Emanu-El Teens Celebrate Confirmation



Temple Emanu-El confirmed five wonderful tenth graders – as well as eight wonderful eleventh graders whose original spring 2020 Confirmation service was cancelled due to the coronavirus pandemic – at an outdoor Shabbat worship service on Friday evening, May 14.

Since March 2020, Temple Emanu-El's Confirmation class has continued monthly. At first, students gathered only via Zoom with instructors Senior Rabbi Brenner Glickman or Associate Rabbi Michael Shefrin; but supplemental class meetings – masked and outdoors – took place beginning in January. Confirmation classes cover a variety of topics selected by students at the start of the year; subjects have included

“Seven Things about Judaism We Don’t Tell Kids,” “hot topics” such as immigration, tattoos and piercings, and the environment; organ donation; gender and equality; Yiddish short stories; Hebrew words everyone should know; Jewish humor; little-known Bible stories; and Jewish teachings on death, mourning, and the afterlife.

Chanting from the Torah scroll, leading prayers, offering original speeches, and making a moving vow to confirm their commitment to Jewish life were eleventh graders Benjamin and Miriam Baram, Eden Glickman, Aaron Lurie, Megan Meese, Danielle and Jayme Rudd, and Robert Witherspoon; and tenth graders David Bayer, Claire Opal-Levine, Garet Pearson, and Evan and Zachary Rubin.

“These are our most dedicated students, who signed on for three years of study following bar or bat mitzvah,” Rabbi Glickman stated. “They love their temple, they love Judaism, and they love being together.”

For more information about Temple Emanu-El's Confirmation class, please call 371-2788.



**Proud to be a part of Sarasota's history.
Honored to be a part of your family's
celebration of life.**

941.955.4171 • www.ToaleBrothers.com



Confirmation class members vowed to continue their commitment to Judaism



Temple Emanu-El's 2020-21 Confirmation class with their proud rabbis



The TEERS community cheers for another great school year



TEERS faculty and Madrichot Sabrina Silverberg, Shosh Nadel, Megan Meese, Farrah Fishman, Felicia DeRowe, Robin Shainess, Aaron Lurie, Ellie Eiseman, Lynne Pewterbaugh, Abby Alcock and Samantha Fineman



Temple Emanu-El's Israel Committee Presents Rabbi Brenner Glickman

Do you feel a bit lost in all the news about the West Bank and Gaza? Then this session is just for you. Rabbi Brenner Glickman will give a basic introduction to the conflict between Israel and the Palestinians, with easy-to-understand maps and helpful timelines. We will outline the history of conflict from the time of the British Mandate until today, including the various attempts at peace along the way.



**A Zoom Event
Tuesday
October 12
7 pm**



Register online at
www.sarasotatemple.org
The Zoom link will be sent to all registrants.



Benny Labinger spends his hard-earned Shekels at the semiannual Shuk

PHOTO GALLERY

The last day of Temple Emanu-El Religious School (TEERS) brought families together for a celebration of an amazing – and unexpected – year. These photos from that special day – and these words from Director of Education Sabrina Silverberg, MARE – will provide smiles, reflection, gratitude, and inspiration as we look ahead to 2021-22.

The 2020-2021 school year was a year like no other. The pandemic challenged us all. Our families, students, clergy, teachers, and staff adjusted and pivoted, and emerged even stronger as a cohesive learning community. Not only did we manage to continue the joy of Jewish learning, first virtually, and then outdoors, but we came out with a renewed sense of unity and love for our community. We are grateful for the hard work of our teachers, the adaptability and patience of our parents, and the creativity of TEE staff and leaders, which enabled us to adjust our programs quickly and effectively. Most of all, we are grateful for the vote of confidence that we received. Thank you.

“The pandemic taught us many lessons and provided us with just as many learning opportunities. We are eager to apply these lessons and innovations now as we prepare for the 2021-22 school year with a renewed sense of excitement. TEERS’ theme for this coming school year is Sigsug (thrive). Together we will work towards reestablishing a safe, IN PERSON, cohesive and thriving learning community in 21-22.”

Ken Yehi Ratzon



Jessi and Ziva Sheslow scoring big at the semiannual Shuk



Melanie Murphy and Lanie Fineman enjoy a cold treat on a hot last day of TEERS



Beloved Madrichot Abby Alcock, Megan Meese, and Samantha Fineman



Mitchell Moscow spends his hard-earned Shekels at the semiannual Shuk



Wesley Wolff spends his hard-earned Shekels at the semiannual Shuk



Libby Lurie receives her achievement award from Morah Sabrina

Let's
Celebrate

SEPTEMBER BIRTHDAYS

1 Doris Mylinarski
1 Dr. Myra Levine
1 Dave Lowell
1 Dr. Janet Stern Solomon
1 Jay Gross
1 Beth Vandroff
1 Trude Bennett
1 Philippe Schwimmer
2 Luca Schlosberg
2 Melanie Murphy
2 Ken Friedman
2 Lucas Nahon
2 Alicia Zoller
3 Ava Rosin
3 Lynn Sacks
3 Robin Shainess
4 Dr. Dori Goldfarb
4 Sharon Linder
5 Cindy Silverglat
5 Rhea Hughes
5 Elaine Blum
6 Conrad Wicks
8 Murray Miller
8 Adira Lesnick
8 Sandra Goldman
9 Mrs. Marni Abrams
9 Eliana Hofing
9 Barbara Mazer
9 Richard Goldstein
10 Linda Essenson

10 Barry Benjamin
10 Phyllis Bertenthal
10 Mary Saily
10 Phyllis Isaacs
11 Dr. Carl Levy
11 Fran Berg
11 Mary Gendler
12 Lisa Bagwell
12 Dr. Ronni Silverman
12 Ora Mendels
13 Debra Schueler
14 Ace Rosenthal
14 Dr. Jeff Moscow
14 Elaine Sager
14 Ronald Shapo
14 Brad Johnson
15 Jason Lipton
15 Irving Ross
15 Josh Yunis
15 Janet Udell
15 Sandra Mardon
15 Larry Fineberg
16 Irene Ross
16 Yvonne Weinsberg
16 Michael Goldman
16 Karen Gundersheimer
17 Mara Daniel
17 Martin Gurvey
17 Sumner Baum
17 Arielle Ramer
17 Laura Detwiler
17 Marc Feldman
18 Alicia Rance
18 Bonita Ganot
18 Jane Vorchheimer
18 Michael Thames
18 Deborah Wides
19 Carole Fox
19 Ziva Sheslow
20 Ada Johnson
20 Eva Claire Hakim

20 Dr. Toby Behar
20 Maggie Mandell
20 Benjamin Grabisch
21 Benjamin Kleinberg
21 Helen Rose
21 Nancy Behrenfeld
21 Felice Volosin
22 Jacob Weinberger
22 Sylvia Gross
23 Robert Hoffberger
23 Carol Siegler
23 Shari Weinberg
24 Dr. Joel Leibowitz
24 Barbara Gerber
24 Nathaniel Cohen
24 Gary Kurnov
25 Allison Cohen
25 Hanna Schneider
25 Lenore Treiman
26 Rifka Glatz
26 Lorrie Pead
26 Ruth Leebron-Levenson
26 Karson Sheckler
26 Dr. Isaac Koziol
26 Ellen Swatek
27 Dr. Scott Silverman
27 Noah Hochberg
27 Lisa Grabisch
28 Eloise Leary
28 Dr. Allen Goodman
28 Dr. Stephen Hiller
28 Jeff Cohen
29 Alexandra Fuchs
29 Persephone Grossman
29 Dr. Joe Mendels
29 Mark Chait
29 Hinda Elwyn
31 Florence Axelrod
31 Elizabeth Ducoff
31 Mia La Porta

SEPTEMBER ANNIVERSARIES

1 Burgess Levin & Mary Saily
2 Judy & Bruce Gibbs
2 Joel & Sherrie Eisenberg
3 Jason & Shera Friedman
3 Missy & Dr. Ryan Jawitz
5 Rebecca & Andy Zion
5 Carol & Robert MacPhee
6 Dr. Marc & Martha Grinberg
7 Ellis & Bernice Lasberg
9 Carrie & Eric Wolff
9 Richard Orenstein
& Diana Vytell
9 Allison Opal-Levine
& Marc Levine
10 Irving & Doris Ross
13 Loretta Bauman
& Janet Sardo
14 Paul Wax & Risa Marlen
16 Leslie & Regene Aberson
16 Stan & Louise Levinson
18 Gerald & Suzette Seigel
18 Karen & Gary Androphy
19 Michael & Susan Albert
19 Marcy & James Moore
21 Andrew & Allison Cohen
22 Brian & Deborah Wides
22 Hernan & Kennya Gluzman
23 Robert & Deborah Hendel
23 Robert & Sharon Miles
24 Gerald Nagler &
Dr. Myra Levine
24 Dr. Alec & Dana Rubin
26 Lisa & Keith Grabisch
27 Nina Levitt &
John Hockenberry
28 Drs. Janet & Stephen Hiller
29 Harvey & Bonita Ganot
30 Conrad & Wendy Wicks
30 Michael & Marsha Svirsky
30 Wendy Fisher &
Matthew Mayer

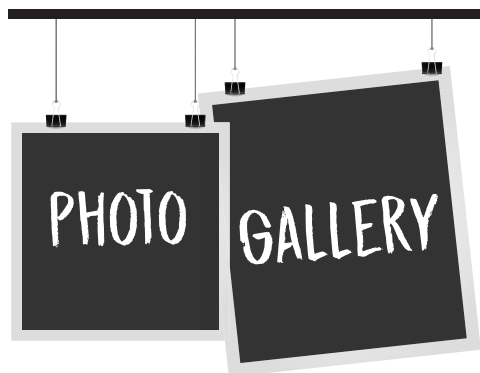


Rabbi Shefrin
showed Penelope
how the Torah scroll
is written at May's
Tot Shabbat



Brothers Avi and
Joah shared a happy
moment together at
June's Tot Shabbat

Summer Tot Shabbat



Young Jewish and interfaith families enjoyed a wonderful summer with Temple Emanu-El Tot Shabbat! Thanks to an amazing anonymous “angel donor” who generously underwrites Tot Shabbat programming, we can provide meaningful, special, and fun monthly events for families and have fostered the creation of a vibrant, friendly, caring, loving, and enthusiastic Tot Shabbat community. Families enjoy playtime, crafts, snacks, and treat bags with a Jewish twist as well as age-appropriate Shabbat songs and prayers, blessings under a tallis for the month’s birthday celebrants, and stories that teach about Shabbat, the holidays, and Jewish values in a joyful, appealing, and relevant way. While Rabbi Michael Shefrin and Rabbi Elaine Glickman oversee Tot Shabbat, individual events are planned and hosted by the young families themselves – bringing new creativity and energy every month—and giving families an important role in

passing down their love of Judaism and Jewish living and learning to the next generation.

May’s Tot Shabbat, beautifully hosted by the Weiman family, was a celebration of Shavuot and God’s gift of the Torah as well as Aitan’s first birthday. Families participated in a Torah-themed craft, enjoyed snacks and playtime, and even had the opportunity to encounter a holy Torah scroll up close! June brought a Tot Shabbat focused on the blessings of summer and was brought to wonderful life by the Lesnick family. Children received summertime-themed treat bags, a summer craft and summer snacks, and beat the heat on our shaded playground. Rabbi Shefrin, Rabbi Elaine, and Savannah Ross took the lead on July’s program – a Havdalah Costume Party that included a pizza dinner and a bedtime story time with milk and cookies. New temple member Barbara Mazer, a cantorial soloist and song leader, has also brought her music and presence to Tot Shabbat, making these gatherings even more special.

We are looking forward to another wonderful year of Temple Emanu-El Tot Shabbat! To learn more, to volunteer to help with Tot Shabbat, or to be added (or add a friend or loved one) to our email list to receive personal invitations to Tot Shabbat, please contact Rabbi Elaine.



Jason and Shauna Wagner dressed to the nines for July’s Havdalah Costume Party



Three generations of the Weiman family explored the Torah scroll with Rabbi Shefrin at May’s Tot Shabbat



The Wagner and Lesnick families arrived at July’s Havdalah Costume Party



The pirate Rabbi Shefrin led blessings and songs at July’s Havdalah Costume Party

because **we CARE** for you about you.

We believe your doctor should get to know you personally, have the flexibility to see you at any time, and commit to delivering benefit-oriented care and advice tailored to your unique needs.

Discover how LernerCohen puts the **CARE** in Healthcare. Schedule a meet and greet to see if concierge care is right for you.



The Doctor Is In. Always.™

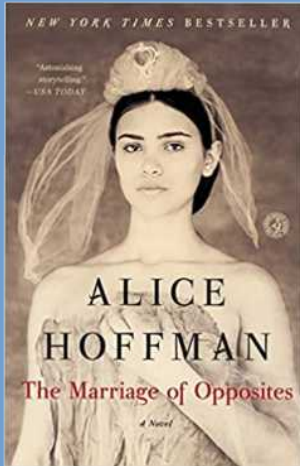
941.953.9080 • LernerCohen.com
1921 Waldemere Street, Suite 814
Sarasota, FL 34239

Dr. Brad S. Lerner | Dr. Louis M. Cohen
Dr. James R. Cocco | Dr. Amy M. Roth

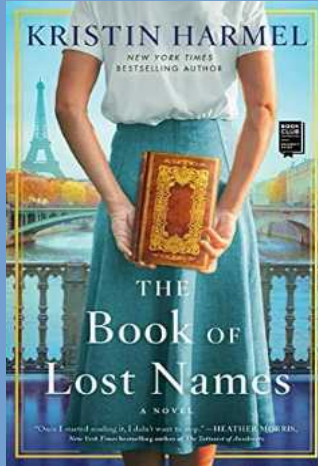


2021 SISTERHOOD BOOK CLUB

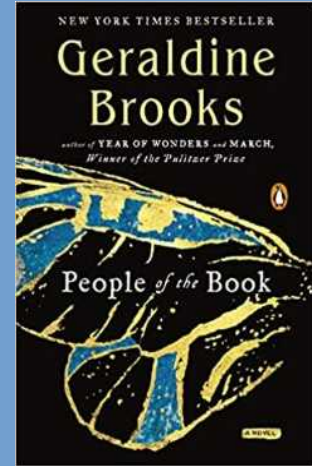
Zoom Book Club Meeting and Discussion



Tuesday
10/5/2021
1:30 PM



Tuesday
11/2/2021
1:30 PM



Tuesday
12/7/2021
1:30 PM

Register at www.sarasotatemple.org
For more information contact Karen Androphy at: TEEBOOKCLUB@gmail.com



M. DAVID SHAPIRO

Board Certified Civil
Trial Attorney

Florida Supreme Court
Certified Mediator

DShapiro@GetMeJustice.com



SHAPIRO | DELGADO

INJURY LAW

Helping the Injured Since 1990

SARASOTA

308 Cocoanut Avenue, Sarasota, FL 34236
toll free 1.800.954.4014 | office 941.954.4000 | fax 941.955.3632

BRADENTON

5283 Office Park Boulevard, Bradenton, FL 34203
office 941.751.0555

CONTRIBUTIONS

Adult Education Fund

In Honor of:

My 70th birthday

by Robert Familant

Alvan Morris Music Fund

In Memory of:

Dr. Alvan Morris, beloved husband of Suzy Morris

by Felice & George Hedge; Lynn & Jay Sacks; Susan & Randy Mallitz; Sumner Baum & Donna Jablo; Seth Force & Sara Marder, Asher & Eitan Force; David & Susan Cohen; Ann & Joe Penn; The Force Family of New Orleans; Barbara & Barry Gerber; Sharon Ainspan & Kenneth Scher; Temple Emanu-El Sisterhood; Barbara G. Zdziarski; Harry & Gayle Yaverbaum; The Martino Family; Betty & Fred Crane; Alice Burd; Geri & Nigel Newman; Howie & Sandy Goldberg; Gwyneth Padget & John Wiginton; Frederick & Anne Snyder; Don Malawsky & Tess Koncick; Sylvia Sarrett; Susan & Ken Simon; Wendy & Conrad Wicks

Dr. Alvan Morris, our wonderful Dad & Pop-Pop

by Mark, Sue Stevie & Joelle Gordon

Herbert Lenk, beloved husband of Ellen Lenk

by Temple Emanu-El Sisterhood;

Harry & Gayle Yaverbaum

Brotherhood

In Honor of:

My 70th birthday

by Robert Familant

Endowment Fund

In Appreciation of:

Rabbi Glickman & Rabbi Shefrin for recognition of Laurance's 80th birthday

by Barbara & Laurance Newman

Temple Emanu-El

by Stuart Klein

Refuah Shleimah:

Barry Gerber

by Howie & Sandy Goldberg

Rich & Ruth Goldman

by Howie & Sandy Goldberg

Yahrzeit In Memory of:

Arnold E. Perlmutter,

beloved husband

by Betty Perlmutter

Joseph Perlmutter, beloved father-in-law

by Betty Perlmutter

Hattie Klein, beloved mother

by Paul W. Klein

Morris Schwartz, beloved father-in-law

by Paul W. Klein

Richard Panaia, beloved brother

by Betty Perlmutter

Rose Perlmutter, beloved mother-in-law

by Betty Perlmutter

Eunice Cohen Religious School Scholarship Fund

In Honor of:

Alan Daniel's Bar Mitzvah

by Temple Emanu-El Sisterhood

Refuah Shleimah:

Barry Gerber

by Temple Emanu-El Sisterhood

Yahrzeit In Memory of:

Fannie Klein, beloved mother

by Gail & Ben Klein

Samuel Cukell, beloved father

by Wendy Wicks

Samuel Klein, beloved father

by Gail & Ben Klein

Seymour Kaufman, beloved father

by Gail & Ben Klein

General Fund

In Appreciation of:

Temple Emanu-El

by John Michael Povey

Temple Emanu-El, for technology support

by Mary Saily & Burgess Levin

The rabbis blessing of our dog, Teddy

by Judith & Ike Koziol

In Honor of:

Alex Zalkin passing the state board nursing exam

by Sandy Ainbinder

Betty Crane's 80th birthday

by Fred Crane; Suzy & Alvan Morris;

Linda & Mort Lichtman; Emily & John Finnegan; Karen & Gary Androphy;

Norma & Charles Slade; Diane Chechik-Temple

Dana & Marty Kline's, granddaughter Jessie's graduation from college

by Roz & Paul Kline

Donna Jablo's birthday

by Sumner Baum & Donna Jablo

Doris Caplan's 95th birthday

by Joan B. Rosenstein;

Diane Chechik-Temple

Dr. Allan Gardner's birthday

by Barbara Gardner

Dr. Brad & Melissa Lerner's 10th anniversary

by Sumner Baum & Donna Jablo

Jay Steele for Father's Day 2021

by Ryan Steele – all the kids & grandkids, B, G, E, D, S, J, R & N

Betty Crane's 80th birthday

by Fred Crane

Jayne & Danielle Rudd's confirmation & Wendy Rudd's birthday

by Marsha & Hank Goldsby

Judy & Jerry Fleischer's 50th anniversary

by Maury Gerson

Judy & Stanley Zinnamon's granddaughter, Sydney's high school graduation

by Roz & Paul Kline

Les Aberson's 85th birthday

by Debbie & Steve Winters;

Mona & Jay Brodsky

Linda Joffe's fluid dance class

by Alice Cotman

My 70th birthday

by Robert Familant

Our dear friends, Tess Koncick & Don Malawsky on the occasion of temple's 65th birthday

by Elly & Steve Hammerman

Paula & David Kaufman's grandson, Elon's graduation from college

by Roz & Paul Kline

Paula Hayden's service to temple

by Ken Taksen

Rabbi Brenner Glickman's 50th birthday

by Marvin Cohen; Arn & Bette Hoffman;

Phyllis & Gordon Loewengart

Sally Steele on Mother's Day

by Betsy, Gary, Elisa, Dave, Spencer, Ryan, Jenn & Noah

Sylvia Waller's 100th birthday

by Howie & Sandy Goldberg

In Memory of:

Cecilia Max, beloved wife

by Dr. Martin Max

David Lafferman, beloved husband of Mollie Lafferman

by Temple Emanu-El Sisterhood;

Doris Caplan

Herbert Lenk, beloved husband of Ellen Lenk

by Ursula Schiff; Phyllis Isaacs

Marcia Klaber, beloved mother of Neil Klaber

by Marcy & Michael Kennelly;

Denise Cutler & Jon Herz-Midler

Marvin Gross, beloved husband of Pam Gross

by Ursula Schiff

Sandy Mendelson, beloved husband of Bonnie Mendelson

by Susan & Randy Mallitz

Refuah Shleimah:

Barry Gerber

by Kathy Rance; Sumner Baum & Donna Jablo; Geri & Nigel Newman

Doug Popp

by Sumner Baum & Donna Jablo

Jack Steenbarger

by Sumner Baum & Donna Jablo

Rabbi Jonathan Katz

by Sumner Baum & Donna Jablo

Sharon Linder

by Sumner Baum & Donna Jablo

Yahrzeit In Memory of:

Abraham Franzel, beloved father-in-law

by Joan Franzel

Alen Edward Feen, beloved brother

by Barbara & Larry Newman

Albert Berman, beloved father

by Sumner Baum & Donna Jablo

Albert Glickman, beloved late husband

by Judy Glickman Lauder

Andrew Shapiro, beloved son

by Fran Shapiro-Darby

Anthony Pisano, beloved parent
by Julie Ross

Arlene Nurenberg Schwen,
beloved sister
by Gail Levy

Beatrice Azrael, beloved
mother, Elizabeth & Zadeh
by Eileen Bowman

Beatrice Klebanoff,
beloved mother
by Carole Schwartz

Benjamin Klebanoff,
beloved father
by Carole Schwartz

Bernard Farfel, beloved father
by Helen & Dr. Larry Rose

Bess LaBorwit, beloved mother
by Phyllis Dreyfuss

Bettie Farfel, beloved mother
by Helen & Dr. Larry Rose

Betty Luskin, beloved mother
by Julie & Arthur Kupersmith

Betty Schlossman, beloved sister
by Joan & Bart Levenson

Bill Shapiro, beloved father
by Nancy & Barry Shapiro

Bob Temple, beloved husband
by Diane Chechik-Temple

Bobbi Popp, wife
by Doug Popp

Carl Darby, beloved husband
by Fran Shapiro-Darby

Channing Marsh, beloved father
by Ken Marsh

David Frank, beloved father
by Suzanne Freund

David Schlossman, beloved father
by Joan & Bart Levenson

Dick Nemschoff, beloved father
by Judy & Bruce Gibbs

Dorothy Weingarten,
beloved mother
by Ronna & Gordon Baum

Dorrace Zucker, beloved mother
by Andrea Zucker

Dr. Joseph Calvin, beloved father
by Caryl Magnus

Dr. Kalman Chase, beloved father
by Stephen Chase, M.D.

Edward Altman,
beloved father-in-law
by Ethel Altman

Eleanor Sager, beloved mother
by Richard & Elaine Sager

Eli Shifrin, beloved father
by Jordan Shifrin

Emily Wax, beloved mother
by Paul S. Wax & Risa B. Marlen

Eric Levy, beloved son
by Judy & Carl Levy

Fannie Nierenberg,
beloved mother
by Alice Cotman

Frances Rosenbach, beloved aunt
by Paul S. Wax & Risa B. Marlen

Gail Freed, beloved wife
by Mark Freed

George Mallitz, beloved father
by Susan & Randy Mallitz

Gertrude Ratner Finger,
beloved mother
by Carol MacPhee

Glen Oppen, beloved father
by Steven Oppen

Goldie Bernholz, beloved mother
by Denise Cotler

Harriet Hodish, beloved sister
by Joan & Bart Levenson

Harry Sirkin, beloved father
by Sherrie Sirkin Eisenberg

Hedy Lenz, beloved mother
by Judy Sauertieg

Helaine Schwabach,
beloved mother
by Ted Schwabach

Helen Namias, beloved mother
by Barbara Meltzer

Henry Leibowitz, beloved father
by Mike Leibowitz

Hy Gilinsky, beloved father
by Linda & Ronald Klineman

Hymen Oppenheim,
beloved father
by Milly Chaykin

Irene Volkman, beloved mother
by Karen Androphy

Iris B. Kerman, beloved mother
by Sumner Baum & Donna Jablo

Isidore Tevlowitz, beloved father
by Howard & Bryna Tevlowitz

Jack Kellerman, beloved father
by Judith K. Leader

Jack Skole, beloved father
by David Skole

Jack Weinman, beloved father
by Barry & Rita Mazer

Jacob Bernholz, beloved father
by Denise Cotler

James Bloom, beloved brother
by Marian Smith

Janet M. Shapiro, beloved mother
by David & Robin Shapiro

Jean K. Cohen, beloved mother
by Marvin Cohen

Jeanette Schep, beloved mother
by Nancy & Bill Behrenfeld

Jeanne Podolsky, beloved
stepmother
by Michael Podolsky

Joel Blumsack, beloved friend
by Roz & Paul Kline

Joseph Glickman,
beloved father-in-law
by Judy Glickman Lauder

Joshua D. Chapnick, beloved son
by The Chapnick Family

Joyce Beroth, beloved mother
by Leslie & Steven Chase

Judith Raymer Fein, beloved sister
by Dr. Phil & Adrienne Hutt

Judith Wortman, beloved mother
by David & Karen Wortman

Judy Blumsack, beloved friend
by Roz & Paul Kline

Jules Okonowsky, beloved
father-in-law
by Steven Oppen

Julia Haber Lakritz, beloved wife
by Dr. Lowell Lakritz

Karen Zack, beloved sister
by Robert & Judithann Zack

Lea Schwartz, beloved mother
by Rebecca Schwartz

Leo Samuel Krawetz, beloved son
by Stanley & Sandy Krawetz

Leon Bloom, beloved father
by Marian Smith

Leona Liptz, beloved mother
by Phyllis Bertenthal

Leonard Schwartz, beloved father
by Rebecca Schwartz

Leslie Wicks, beloved father
by Conrad Wicks

Lewis B. Spivak, beloved father
by Richard & Elaine Sager

Lila Lee Miller, beloved mother
by Ardis & Ernie Freedman

Lillian Korba, beloved mother
by Al & Jan Korba

Lillian Meltzer, beloved mother
by Philip Meltzer

Lillian Meltzer, beloved mother
by Rhea Hughes

Lilly Silverman, beloved mother
by Carol J. Kraines

Louis Levenson, beloved father
by Joan & Bart Levenson

Louis Nahon, beloved father
by Claude Nahon

Louis Zamkoff, beloved father
by Rich & Judy Fine

Lucille Welk, beloved aunt
by Bill & Gloria Weed

Mark Smith, beloved husband
by Marian Smith

Marsha Lewis, beloved wife
by Mark Lewis

Martin Rosenthal, beloved father
by Susan & Randy Mallitz

Martin Silverman,
beloved husband
by Joanne Silverman

Max Baverman, beloved father
by Rochelle Harned

Max Freund, beloved father-in-law
by Suzanne Freund

Max Haimowitz, beloved uncle
by Ethel Altman

Max Mazer, beloved father
by Barry & Rita Mazer

Melvin Stanley Cahn,
beloved father
by Joyce C. Smolkin

Michael Jaffe, beloved father
by Lauren Hofing

Mike Silverander, beloved brother
by Alan & Cindy Silverglat

Milton Baum, beloved father
by Sumner Baum & Donna Jablo

Minnie Levenson, beloved mother
by Joan & Bart Levenson

Minnie Marcus Roman,
beloved mother-in-law
by Marvin Cohen

Minnie Needle,
beloved grandmother
by Barbara Meltzer

Mollie Behar, beloved mother
by Vic Behar

Morris Abramson, beloved father
by Barbara & Eugene Allen

Morris Miller, beloved father
by Ardis & Ernie Freedman

Morton Schep, beloved father
by Nancy & William Behrenfeld

Muriel Selinger, beloved mother
by Helene Davis

Myer Jack Grossman,
beloved father
by Elaine Blum

Myron Berman, beloved father
by Robert Berman

Naomi Popkin, beloved mother
by Steve & Jane Goldner

Naomi Shor, beloved
mother-in-law
by Bernice Shor

Norma Levin, beloved mother
by David Levin & Dr. Rosemary Cullain

Norman Shapiro,
beloved late husband
by Fran Shapiro-Darby

Pearl Radin, beloved grandmother
by Jennifer Moore

Philip Shapiro, beloved husband
by Judy Shapiro

Phillip Markman, beloved father
by Sandy & Jerry Kuskin

Philippe Nahon, beloved brother
by Claude Nahon

Phyllis Klapman, beloved mother
by Liz & Neil Klaber

Ralph Carr, beloved uncle
by Conrad Wicks

Richard Hofing, beloved brother
by Lauren & Nevin Hofing

Richard J. Mihaley, beloved father
by Lori-Nan Mihaley

Robert Magnus, beloved husband
by Caryl Magnus

Robert Schlossman, beloved
brother
by Joan & Bart Levenson

Roni Welk, beloved cousin
by Bill & Gloria Weed

Rose Galinko Bisgeier,
beloved mother
by Paul S. Wax & Risa B. Marlen

Rose Helfman, beloved mother
by Jeanne Gerry

Roy Sperling, beloved brother
by Fran Shapiro-Darby

Rubin G. Cohen, beloved father
by Marvin Cohen

Ruth Denver, beloved mother
by Michael Pass

Ruthmary Goldman, beloved wife
by Martin Goldman

Sam Gerson, beloved father
by Geri & Nigel Newman

Samuel F. Lakritz, beloved father
by Dr. Lowell S. Lakritz

Sarah Mallitz, beloved mother
by Susan & Randy Mallitz

Seymour Liberman,
beloved brother
by Debby Solomon

Shirley Schlossman,
beloved mother
by Joan & Bart Levenson

Shirley Schwartzberg Shifrin,
beloved mother
by Jordan Shifrin

Sol Kaufman, beloved
father-in-law
by Eileen Bowman

Steven Becker, beloved husband
by Barbara Becker

Susan Spivak, beloved sister
by Richard & Elaine Sager

Sylvia Rosenthal, beloved mother
by Susan & Randy Mallitz

Sylvia Sperling, beloved mother
by Fran Shapiro Darby

Trevor Ethan Hoffman, grandson
by Bette Hoffman

Walter Grant, beloved
by Yvette Levi

Walter V. Weinberg,
beloved father, grandfather
by Janis, Ken & Geoff Gold

Library Fund

Yahrzeit In Memory of:

Jeannette Socholtzky,
beloved mother
by Roz Lieberman

Music Fund

In Memory of:

David Lafferman, beloved
husband of Mollie Lafferman
by Marlies Gluck

Marcia Klaber, beloved
mother of Neil Klaber
by Kim & Jon Sheintal

Yahrzeit In Memory of:

Edna McNab Upton,
beloved mother-in-law
by Marlies Gluck

Rabbi Brenner Glickman's Discretionary Fund

In Appreciation of:

Blessings & unveiling
for Annie Lowenthal
by Debbie Neiterman

Rabbi Brenner Glickman
*by Ken Taksen; Marc & Andrea Feldman;
Michael & Rachel Freeman; Sumner
Baum & Donna Jablo*

Rabbi Brenner Glickman for his
kindness & compassionate funeral
service for my beloved wife, Bunny
by Dr. Alan Shuman

Rabbi Brenner Glickman's
support & kindness when our
dad, Art passed away
by Cheryl Timmins & Marla Harlan

In Honor of:

Howie & Sandy Goldberg's
60th anniversary
by Diane Chechik-Temple

Jacob Grossman's birthday
by Susan & David Cohen

Martha & Joe Marsh's
50th anniversary
by Debbie Yonker & Mark Freed

My 70th birthday
by Robert Familant

Rabbi Glickman for his support &
comfort during my mother's illness
by Wayne & Ronna Ruben

Rabbi Glickman's
15th year at temple
by Diane Chechik-Temple

Rabbi Glickman's 50th birthday
*by Gary & Susan Rosenbaum; Susan &
Taylor McCart; Barbara & Allan Gardner*

The marriage of Sheila &
Merrill Wynne's daughter
by Genie & Les Aberson

In Memory of:

Bernie Katz, beloved
husband of Gail Katz
by Les & Genie Aberson

Yahrzeit In Memory of:

Arline Davidson, beloved sister
by Ellis & Bernice Lasberg

Fortunee Moshe, beloved mother
by Yvette Levi

Maury Fagan, beloved father
by Ellen & Art Zipin

Ronna C. Miles, beloved mother
by Robert & Sharon Miles

Rabbi Elaine Rose Glickman's Fund

In Honor of:

Rabbi Elaine Rose Glickman for
her tireless scholarship, in honor
of my daughter Marci Alpert
Berson's 50th birthday
by Roberta Berson & Frank Tucciarone

My 70th birthday
by Robert Familant

Rabbis Brenner & Elaine
Glickman's anniversary
by Diane Chechik-Temple

Rabbi Shefrin's Discretionary Fund

In Appreciation of:

Blessing for Ken Maddeford's
good health
by David & Brenda Berkeley

Educational excellence
by Frank Tucciarone & Roberta Berson

Rabbi Shefrin
by Ken Taksen; Dan Henry

Rabbi Shefrin for Joe &
Savannah's lovely ceremony
by Gary & Colleen Ross

Rabbi Shefrin blessing our
grand dog Daisy on Blessing
of the Animals

by Bettianne & Hal Marcus

Rabbi Shefrin hosting a
wonderful 34238 gathering
by Denise Cotler & Jon Herz-Midler

Rabbi Shefrin officiating
the wedding of Joe Ross &
Savannah Samberg
by Mitchell & Lynn Samberg

In Honor of:

My 70th birthday
by Robert Familant

Rabbi Shefrin for his comfort &
support during my mother's illness
by Wayne & Ronna Ruben

In Memory of:

Marcia Klaber, beloved
mother of Neil Klaber
by Felice & George Hedge

Yahrzeit In Memory of:

Barbara Suchanec, beloved mother
by Barry & Leslye Seidel

Religious School Fund

In Appreciation of:

Dr. Jeff Moscow & Family
by Rabbi Elaine Rose Glickman

Sabrina Silverberg, the
consummate teacher of
Children & adults alike
by Lauren Hofing

The Religious School
by Jane Kritzer

The Religious School teachers
by Kathy & Donn Rance

The wonderful Moscow Family
by Rabbi Elaine Rose Glickman

In Honor of:

Abby & Katie Alcock's
graduation from Sarasota High
by Ellen Salih

My 70th birthday
by Robert Familant

Social Action Fund

In Honor of:

My 70th birthday
by Robert Familant

In Memory of:

Bob Molino, beloved partner
by Gail Kevenk

Yahrzeit In Memory of:

Yetta Lubosh, beloved mother
by Doris Caplan

Sisterhood Fund

In Honor of:

My 70th birthday
by Robert Familant

Starfish Fund

In Appreciation of:

The Starfish Program
by Akiva Pipe

In Honor of:

Debbie & Joe Mangan's new
grandson, Benjamin Akiva
by Wendy & Larry Barnet

Elaine & Akiva Pipe's new
great-grandson, Benjamin Akiva
by Wendy & Larry Barnet

Tanice Knopp, who inspired &
guided us in the implementation
of the Starfish Program at Wilkinson
by Lynn & Michael Friedman;
Helene Davis & Bobby Greisman;
Julie & Artie Kupersmith

This donation is made in honor
of Dr. Tanice Knopp for her
tireless efforts to create and
coordinate the Starfish Initiative at
Wilkinson Elementary. Through
her knowledge of education,
meticulous attention to detail,
and insightful leadership, the
program grew to include many of
the school's kindergarten students
and Temple volunteers. Starfish's
success at Wilkinson has led to its
replication in several other local
elementary schools. As Tanice
embarks on a new adventure in
Israel, she leaves behind a lasting
legacy that will continue to benefit
children for many years to come.

From, The Mah Stars: Sandi Chapnick,
Wilma Hamilton Delp, Carlene Judge,
Wendy Katz, Cyd Quinn, Sheila Weiss

In Memory of:

Marcia Klaber, beloved
mother of Neil Klaber
by Wendy & Larry Barnet

Refuah Shleimah:

Anne & Wally Bishop
by Judy & Fred Thibault

Barry Gerber
by Judy & Fred Thibault

Wendy Barnet
by Lynn & Michael Friedman;
Judy & Fred Thibault

Yahrzeit In Memory of:

Mollie Levine Gross,
beloved mother
by Bob & Sharon Miles

Youth Group Fund

In Honor of:

Savannah & Joe Ross
by Eduardo Marin & Barbara Mazer

MERYLL KOVEN
The 3M Florida Realtor
Sara Bay
real estate, inc.

Meryll Koven
REALTOR®, PSA
Certified Pricing
Strategy Advisor
(941) 526-5913

PRICING STRATEGY ADVISOR

www.3mfloridarealtor.com



WHAT MAKES TEL MOND SPECIAL?

Date: Thursday, October 21, 2021
Time: 7:00 PM

Please join Rabbi Jonathan Katz of Sarasota Sister Cities Association as he provides an intimate portrait of Tel Mond, Israel on a special Zoom for Temple Emanu-El's Israel Committee.

Tel Mond is one of Sarasota's six Sister Cities with a relationship that goes back to 1996 and has been followed by a variety of exchanges that have brought Sarasotans to Tel Mond and vice-versa.

Located close to Tel Aviv, Tel Mond occupies a beautiful setting and enjoys a fascinating history and contemporary story.

Please register to receive the Zoom link by going to the Temple website: sarasotatemple.org to register under the Events tab.

Rabbi Katz is the Sister Cities City Director for Tel Mond as well as the Community Chaplain/Director of JFCS' Jewish Healing Program.



Easy Hebrew

For those participating in the upcoming Israel trip and others who may be interested.

Temple Emanu-El's Israel Committee presents
Bruce Kleinberg, J.D., M.D.



Bruce has been an IDF paratrooper, he is a retired US Army Reserves Captain, and served as a Sarasota patrol officer and Florida Assistant State Attorney (Hillsborough County). Bruce is currently a 24/7 injury lawyer who is board certified in civil trial law.

He will also discuss his experience in the IDF Paratroop unit, seeing combat in Lebanon.

**Sunday,
October 17 at 10:30 am
A ZOOM EVENT**



Register at

www.sarasotatemple.org

The Zoom link will be sent to all registrants.



DR. MOSCOW & ASSOCIATES

Excellence in Chiropractic, Auto Injury, Medical & Wellness Care

AUTO INJURIES

(941) 954-3700

DIGITAL X-RAY

CHIROPRACTIC CARE

MDT PHYSICAL THERAPY

PAIN MANAGEMENT

CLASS IV LASER THERAPY

CUSTOM ORTHOTICS

MASSAGE

FRUITVILLE OFFICE PARK

**3277 Fruitville Rd
Building A, Suite 2
Sarasota, FL 34237**

Insurance Accepted



Dr. Jeffrey Moscow
DrJMoscow.com

Come experience our brand new office and check out our Google reviews!



Se habla español

SAVE THE DATE



SAPPHIRE CELEBRATION

***** HONORING *****
Rabbi Elaine Rose Glickman

February 27, 2022
Benderson Family Hall
Brunch catered by Michael's On East
Tickets: \$75/per person

CO-CHAIRS:

Gloria Weed & Michael Richker

For sponsorship information, contact
Michael Richker 847-331-8518
michael.richker@gmail.com



Temple Emanu-El's Brotherhood Presents

Barry, Bald Eagles & Bagels



Sunday, October 24
10 am (Doors open at 9:30)

Temple Emanu-El
Benderson Family Hall
151 McIntosh Road
Sarasota, FL 34232

Barry Gerber, President of Temple Emanu-El and a Florida Master Naturalist, will offer a fascinating presentation about the magnificent Bald Eagle in this area, a symbol of the USA. *Preceding the presentation will be a delicious bagel breakfast.*

\$10 in advance or \$15 at the door.

Questions? Contact Don Malawsky at 941-359-2890 or
dmalawsky@msn.com

REGISTER & PAY ONLINE AT
WWW.SARASOTATEMPLE.ORG

RSVP BY OCTOBER 22



Save the
Date



Let's Party!

TEE's 65th Birthday Party

**Featuring Strolling Magician
and Magic Show**

Fun games for all ages



Sunday,
November 7, 2021
11:30-1:30



Lunch available

OCTOBER 2021 / TISHREI-CHESHVAN 5782

- | | |
|--|--|
| <p>1 Adult Hebrew Reading Class 9:15 am
Simchat Torah Shabbat 7:15 pm</p> <p>3 Brotherhood Board Meeting 9:30 am
Religious School 9:30 am
Confirmation Class 10:00 am</p> <p>4 Zoom Social Hour..... 5:00 pm</p> <p>5 Hebrew Level 4 Advanced 9:15 am
Hebrew Level 3 Upper Intermediate.... 10:15 am
Sisterhood Book Club1:30 pm</p> <p>6 Hebrew Level 1 Beginners..... 11:45 am
Lunch with the Rabbis 12:00 pm
Religious School 5:30 pm
Hebrew Level 2 Lower Intermediate.... 7:45 pm</p> <p>7 Fluid Dance 10:00 am</p> <p>8 Adult Hebrew Reading Class 9:15 am
Erev Shabbat..... 7:15 pm</p> <p>9 Brotherhood/Sisterhood Picnic..... 5:30 pm</p> <p>10 Religious School 9:30 am
TEERS Yom Yekirim Grandparents Day.. 9:30 am
Brotherhood New Member Meet & Greet . 2:00 pm
Elinor Greenberg Memorial Service 4:30 pm</p> <p>11 Zoom Social Hour..... 5:00 pm</p> <p>12 Hebrew Level 4 Advanced 9:15 am
Hebrew Level 3 Upper Intermediate.... 10:15 am
Adult Education Committee Meeting...10:30 am
Israel Committee: Israeli-Palestinian Conflict.. 7:00 pm</p> <p>13 Sisterhood Board Meeting10:30 am
Hebrew Level 1 Beginners..... 11:45 am
Religious School 5:30 am
Hebrew Level 2 Lower Intermediate.... 7:45 pm</p> <p>14 Fluid Dance 10:00 am
Brotherhood Theater Interest Group ... 2:30 pm</p> <p>15 Adult Hebrew Reading Class 9:15 am
Erev Shabbat..... 7:15 pm</p> | <p>16 Jacob Feldman Bar Mitzvah 5:00 pm</p> <p>17 Religious School 9:30 am
Confirmation Class 10:00 am
Israel Committee - Easy Hebrew.....10:30 am
Sisterhood Meet & Greet1:30 pm</p> <p>18 Philanthropy Committee Meeting..... 5:00 pm
Zoom Social Hour..... 5:00 pm
Board of Trustees Meeting 7:00 pm
Membership Committee Meeting..... 7:00 pm</p> <p>19 Hebrew Level 4 Advanced 9:15 am
Committee Chair Meeting 10:00 am
Hebrew Level 3 Upper Intermediate.... 10:15 am
Book Buddy Orientation1:00 pm</p> <p>20 Hebrew Level 1 Beginners..... 11:45 am
Religious School 5:30 pm
Hebrew Level 2 Lower Intermediate.... 7:45 pm</p> <p>21 Fluid Dance 10:00 am
Israel Committee - Sarasota Sister City in Israel. . 7:00 pm</p> <p>22 Adult Hebrew Reading Class 9:15 am
Erev Shabbat..... 7:15 pm</p> <p>24 Religious School 9:30 am
Brotherhood's Barry, Bald Eagles & Bagels. . 10:00 am</p> <p>25 Starfish Steering Committee Zoom Meeting.. 10:30 am
Zoom Social Hour..... 5:00 pm</p> <p>26 Hebrew Level 4 Advanced 9:15 am
Hebrew Level 3 Upper Intermediate.... 10:15 am</p> <p>27 Hebrew Level 1 Beginners..... 11:45 am
Social Action Committee Meeting1:30 pm
Religious School 5:30 pm
Hebrew Level 2 Lower Intermediate.... 7:45 pm</p> <p>28 Adult Education Program: "Ragtime"...10:30 am</p> <p>29 Adult Hebrew Reading Class 9:15 am
Erev Shabbat..... 7:15 pm</p> <p>31 Religious School 9:30 am
Semi-Annual Congregational Meeting.. 9:30 am</p> |
|--|--|



*From our Federation
family to yours,
we wish you a Happy,
Healthy and Bright
New Year!*



The Jewish Federation
OF SARASOTA-MANATEE

TEMPLE EMANU-EL

151 McIntosh Road
Sarasota, Florida 34232

WWW.SARASOTATEMPLE.ORG

Office 941-371-2788
Maintenance 941-371-2805
Religious School 941-378-5567
Pre School 941-377-8074

TEMPLE EMANU-EL

Rabbi Brenner Glickman
Associate Rabbi Michael Shefrin
President Barry Gerber
Immediate Past President Ken Marsh
Brotherhood President Rich Fine
Sisterhood Co-Presidents... Judy Fine, Harriette Krasnoff
Executive Director Christine Elliott
Religious School Education Dir. Sabrina Silverberg
Susan Schwaid Early Learning Center Dir. ... Elaine Sharrock
Choir Director/Organist Cynthia Roberts-Greene
Times Co-Editors Susan Kilman, Dr. Eleanor Wachs
Times Editorial Staff Sharly Gold,
Howie Goldberg, Marcy Moore, Susan Samson

TIME VALUE
PLEASE DELIVER
BY SEPT 1

NON-PROFIT ORGANIZATION
US POSTAGE
PAID
MANASOTA, FL
PERMIT #63



RESPONSIBLE READY RELIABLE RESOURCEFUL
RESILIENT RESPECTFUL REASONABLE RESPONSIVE

Nancy Bossov

projecthomesuitehome@gmail.com
www.projecthomesuitehome.com

941.363.6501

**Protect Your Biggest Investment -
Your Home**

SHELDON PALEY 
EXPERIENCE & INTEGRITY



“ **BEST IN CLIENT SATISFACTION
FOR 14 CONSECUTIVE YEARS** ”
— AS SEEN IN SARASOTA MAGAZINE



Certified Senior Real Estate Specialist | Certified International Property Specialist

Premier | **Sotheby's**
INTERNATIONAL REALTY
PREMIERSOTHEBYSREALTY.COM

941.356.1857
www.paleyproperties.com
sheldon.paley@premiersir.com

Sotheby's International Realty® and the Sotheby's International Realty logo are registered service marks used with permission. Each office is independently owned and operated. Equal Housing Opportunity.