



# Temple Times

TEMPLE EMANU-EL | SARASOTA, FLORIDA | FOUNDED 1956

## Rabbi's Message: Civil Rights

Jews have long stood up for civil rights and equality. We believe all people are *B'tzelem Elohim*, "created in the image of God" (Genesis 1:27).

Jews have played important roles in the work of civil rights in America. Jews helped birth the NAACP and the Leadership Conference on Civil and Human Rights. As a Reform Jewish community, we are proud that The Civil Rights Act of 1964 and Voting Rights Act of 1965 were drafted in the conference room of the RAC, the Religious Action Center of Reform Judaism. We are proud that Jews were on the front lines during Freedom Summer 1964 and that our leaders marched alongside Dr. Martin Luther King, Jr.



Yet, there is more to be done. The work is not yet complete. Today, the Jewish community continues supporting civil rights and social justice. You should be a part of this mitzvah.

Allow me to offer two invitations.

First, join me on an unforgettable Civil Rights Journey this October. Temple Emanu-El will travel by

bus through Atlanta, Montgomery, Birmingham, and Selma with the renowned organization Etgar 36. Historic sites will come alive with our own expert guide who specializes in tours for Jewish adults. Stand where the Civil Rights Movement began with Rosa Parks. Attend Sunday services at Dr. King's own Ebenezer Baptist Church. Visit the Equal Justice Initiative Legacy Museum and walk across the Edmund Pettus Bridge. The tour includes personal meetings with participants in the historic struggle, and prominent leaders of today's efforts. Come be inspired and learn. The dates are October 19th–22nd. See our temple website or contact me for details.

Second, our temple's Social Justice Committee, formerly known as Friends of the Religious Action Center is experiencing a rebirth. There is a groundswell among our members who want to do work for equality and justice. If you would like to join in the activism, education, and impact on local and state policies, send an email to [TEESocialJustice@gmail.com](mailto:TEESocialJustice@gmail.com). The Jewish people have known oppression and injustice. We are obligated

to combat it.

The Talmud teaches what is hateful to you, do not do to your neighbor: "It is incumbent upon us to ensure the equal rights of others. Let's get to work!"

**Rabbi Michael Shefrin**



*Rabbi Michael Shefrin*

## IN THIS ISSUE

President's Message .....	2
Exec. Director's Message.....	2-3
Brotherhood .....	4
Sisterhood.....	7
"Life & Legacy" Benefactors....	8
Adult Educ. Update.....	10
Mezuzah-Making Tot Shabbat...	12
Meet New Friends.....	13
SSELC .....	13
Selby Gardens Tiffany Exhibit...	14
Caring Comm. New Chair .....	14
Mitzvah Day 2023.....	15
Sisterhood Gift Shop .....	15
Opher Library .....	16
Shabbat Alive!.....	16
TEERS Start 2023 .....	21
Photo Gallery.....	23

## President's Message: Membership Growth

I'm excited to be staying in my comfort zone this month. I have a degree in statistics and am dealing with data, specifically the growth of our congregation. I looked at the number of new members joining the temple between July 1 and December 31 for the last five years. Why for those six months? Because that's what we have available for the current year, and I want to do an apples-to-apples comparison. And that's okay. We typically get more new members in those months than in the last 6 months of the fiscal year.

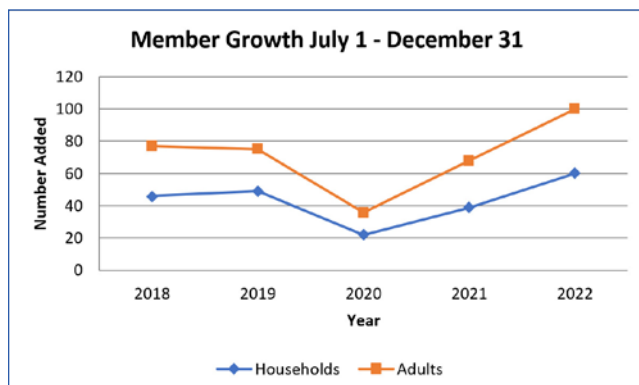
The data are shown in the graph below. It would be a statistician's dream to break down the data several ways – by age, gender, occupation, interests, zip code, height (okay, I threw the last one in to see if you're paying attention). But I'll resist that temptation and focus only on the total number of households and adults that joined. The graph shows the number of people joining Temple Emanu-El in the last six months of each given year. The blue line is the number of households and the red line is the number of adults. Roughly speaking we had the same amount of growth in 2018, 2019, and 2021. There was a dip in 2020, which I would attribute to the pandemic. Nothing was taking place in person and some people postponed joining. We had a significant increase in 2022. While there are several

reasons for this: one is the re-opening of the temple with in-person services and events. Second, people who postponed their affiliation now joined.

I have been asked several times whether we should put a cap on membership. My answer is no. Why would we? We are not space constrained. Our most highly attended services are Kol Nidre and Yom Kippur morning. While the sanctuary and social hall were pleasantly crowded, there were still seats available. And while people have periodically expressed concern about parking, we are looking into that as part of our Greenspace initiative. In the meantime, we can generally use the parking lot at St. Martha's school across the street. We have a wonderful relationship with them, and most of our activities occur when school is closed.

To me the biggest challenge associated with this growth is retaining our identity. Our congregation is known to be warm, caring, inviting, inclusive, and vibrant. People genuinely feel welcome. That has been one of the key reasons people join our temple. What can you do to help keep that *hamishe* feeling? When you see unfamiliar faces at onegs and temple events, introduce yourself. Ask about them – who they are, what they like. Treat them like they are in your home. They are.

**Bob Meisel**  
Temple President



Bob Meisel

## Executive Director's Message: What's A Nice Girl Like You Doing in A Place Like This?

What an odd title you say? Maybe so. Since I have been with the temple, this is one of many interesting comments and questions that members have shared with me. I am also frequently told this joke, "Have you heard this one- What do you get when two Jews are in the room? Three opinions." Sometimes people argue about whether or not I am Jewish in front of me. Some swear they know other Jews with the name Christine, some think I converted, some tell me I am definitely not Jewish, and others insist I am Jewish. If I find someone beating around the bush because they are not sure if it is okay to ask me about my heritage and religious background, I am straightforward and talk about it. This all makes for wonderful conversation starters and opportunities to learn about each other. I love the openness, and gladly welcome all of it.

Why am I bringing this up? Recently, I have been getting these responses a lot as well as being asked why I want to work for a Jewish temple.

My path to becoming the Executive Director (ED) at Temple Emanu-El was a multi-step process including having several interviews with different groups of temple leaders and staff. The temple's hiring process was a helpful introduction to the inner mechanisms of the temple and for working in a volunteer driven establishment. My professional background includes working for different and much larger non-profits. I have my master's degree in counseling and worked as a mental health therapist with children, families, individuals and couples for a number of years before moving into



Christine Elliott

leadership roles. Prior to landing my job here, I was part of the corporate team of a large non-profit and oversaw numerous staff and departments. I was also commuting and traveling all over the State of Florida and outside of the State. Even though I loved the position and valued the good works the non-profit was doing, the position

was not a good match for my family. Gratefully, the ED position popped up at the perfect time. I was drawn to the temple's job as it felt like an excellent match for my diverse set of professional skills including overseeing the facilities department. Personally, my husband is retired from the military which gave me plenty of opportunities to run our household alone overseeing renovations and equipment replacement. I still pride myself on getting our exploding hot water tank fixed and the house cleaned up on a Saturday all in time to have my children dressed and ready to participate in a local parade later that afternoon.

During the High Holy Days, I am happy the temple hired a non-Jewish director so I can be the one to oversee the logistics and not impede upon someone missing out on their special holidays. I am eager to constantly learn about Judaism, know what the holidays mean, and try to remember the correct pronunciation of Hebrew words. I have hamantaschen down but



**WELCOME!**

**TEMPLE EMANU-EL  
WELCOMES THE  
FOLLOWING MEMBERS**

Cohen, Craig  
Handleman, Judy & Bob  
Price, Leslee

**WELCOME BACK!**  
Chase, Leslie & Steven

don't ask Rabbi Glickman about my poor pronunciation of Shomer. Truly, I am proud to be a part of the temple to see firsthand the good works that are done, be involved in supporting the growth and future of the synagogue, and do my part to repair the world-Tikkun Olam.

**Christine Elliott  
Executive Director**

**Temple Emanu-El  
Sisterhood**

**BOWERY TO BROADWAY**

**The Reviews are in.....**

**Mazel Tov on a wonderful luncheon! The entertainment was a huge hit!**

**It was perfect from beginning to end! Thumbs Up! When is the encore?**

**The food was delicious, the table arrangements lovely and the program outstanding!**

**It was the BEST event I've been to at TEE!**

**What a huge success, the ambiance, the food and the musical, all were wonderful!**

**Amazing performance! People were so happy! Everyone loved it! A Must-See!**

**I'm very excited to be part of this vibrant group of women!**

**Thank you for all your beautiful and holy work to support SPARCC!**

**How do you plan to top yourselves next year?**

**STAY TUNED & Thank You!**



Let's look at recent activities and upcoming exciting first quarter 2023 milestone events. January 15th, started with the annual Tribute to Martin Luther King Jr. Brotherhood, Sisterhood and the Social Action Committee jointly sponsored this event. with support of Jewish Federation. Over 200 attendees were treated to an outstanding and memorable event honoring the legacy of this great American civil rights leader. We heard music from the fabulous **Soul Sensations**, who played and sang the music of the 1960's when the nation was focused on the fight for Civil Rights. Rev. Charles McKenzie delivered a dynamic replication of Dr. King's words and thoughts and poetry that moved a nation with a hopeful message of peace and harmony. Lonneta Gaines recited the speech that Amanda Gorman wrote and read

at President Joe Biden's Inauguration, 'The Hill We Climb'. We also honored the victims of the tragedies at the EAM Episcopal Church in Charleston, SC and the Tree of Life Synagogue in Pittsburgh, PA. An annual event that seems more extraordinary and meaningful each year.

With the NFL playoffs dominating the sports scene in January, Brotherhood held another NFL Benderson sports event, January 29th -NFC championship - Eagles vs 49ers. Disappointing injuries and penalties marred the game, but the two dozen attendees enjoyed the game on the large screen and the stadium BBQ tailgating fare.

January 29th twelve of Brotherhoods best defended its 7-year consecutive losing streak playing Bocce against the Cascades on their turf. After the match, we congratulated the winners (Cascades, of course) and enjoyed a true Italian treat – pizza. We all enjoyed the day.

February 17th was a special treat; a joint Brotherhood/ Sisterhood Shabbat Espanola. A great dinner coupled with rabbinical perspective of the history of Jewish ancestors in Spain and how it influenced our history. Traveling in Europe this summer, especially in Spain and Portugal gave me greater insights into our heritage and history.

We were delighted that on February 19th, Brotherhood hosted a sports night featuring Doug Fernandes, Sports Editor



Ken Simon

of the Sarasota Herald-Tribune. Doug reviewed the Super Bowl and answered questions and analyzed strategies. The event offered a super quality tailgate fare for feasting as well as healthy food.

In a look ahead, March offers:

- March 4th Circus outing with a special ringmaster
- Our multigenerational NCAA March Madness
- March 12th Oriole spring training game
- March 26th our temple's fund-raising golf outing
- March 28th - Perlman Music Program/Suncoast, Professional String Quartet featuring K J McDonald, Phoebe Gardner, Julian Seney on violin and Leland Ko on cello

**Alert:** There are still sponsoring opportunities and open foursomes available for the March 26th golf tournament temple fund raiser for All Faith's Food Bank and temple outreach programs.

Additional details for all upcoming events are available on the temple website. mentioned in Temple Times, the weekly Tuesday email and flyers in the temple entrance.

**Ken Simon**  
Brotherhood President

## SUNCOAST FLORIST

1227 Beneva Rd. Sarasota, FL 34232

Corner of Bahia Vista & Beneva

(941)365-6407

SUNCOASTFLORISTRY.COM

"Your neighborhood florist since 1980"



**LIVE PERFORMANCE BY CIRCUS SARASOTA!  
ONE RING UNDER THE BIG TOP!**

**FEATURING**  
Special Guest Ringmaster  
Rabbi Michael Shefrin



Doors open at 6 pm for ticket pick up  
**Nathan Benderson Park**  
Circus Sarasota Tent adjacent to the lake  
5851 Nathan Benderson Circle  
Sarasota, Florida



**PRESENTED BY**



**Adults: \$40 / Children 13 & Under: \$20**

**RSVP Required by Mar.1st:** [SarasotaTemple.org](http://SarasotaTemple.org)

**Questions?** Contact Don Malawsky at [dmalawsky@msn.com](mailto:dmalawsky@msn.com) or 941-359-2890

## **SISTERHOOD BOOK CLUB**

**Upcoming Books and Meeting Information**

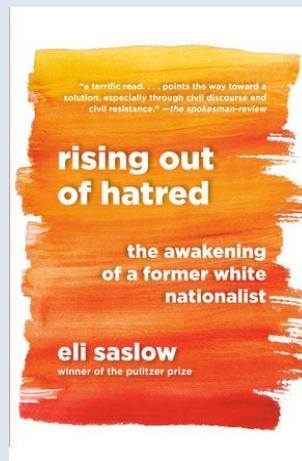


**ATTENTION!**

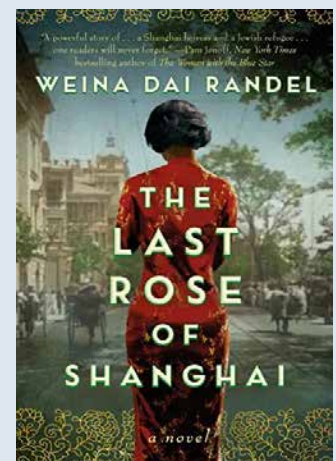
**NEW Schedule**

**MARCH Book now:**  
*Rising Out of Hatred*

**APRIL Book now:**  
*The Last Rose of Shanghai*



☒ **IN PERSON**  
at Temple Emanu-El  
Tuesday-3/7/2023  
1:30PM



☒ **IN PERSON**  
at Temple Emanu-El  
Tuesday 4/4/2023  
1:30PM

**For more information contact Karen Androphy at: [TEEBOOKCLUB@gmail.com](mailto:TEEBOOKCLUB@gmail.com)**



# PURIM CARNIVAL

SUNDAY, **MARCH 5**  
9:30AM-12:00PM

Starting at the Temple Sanctuary  
**TEMPLE EMANU-EL**  
151 McIntosh Rd, Sarasota

**Your wristband is your reservation!**  
To pre-pay for wristband & order  
lunch register by March 1:  
**SarasotaTemple.org**

**QUESTIONS:** Email us at  
[teers@sarasotatemple.org](mailto:teers@sarasotatemple.org)

## **Pre-Paid Box Lunches**

Bagel Lunch: \$9  
Corned Beef Lunch: \$14

## **Hamentashen**

## **Unlimited Play & Games**

Pre-paid Wristband: \$18  
At the Door: \$20  
3 & Under: FREE

**Megillah Reading**

**Purim Play**

**Costume Parade**

**Bounce House**

**Obstacle Course**

**Rock Wall**

**Axe Throwing**

**Vintage Carnival Games**

**Wine/Liquor Pull Raffle**

All proceeds to benefit Temple Emanu-El Religious School





Kudos are still pouring in from the recent Sisterhood Paid-Up Membership luncheon. It was a truly marvelous event enjoyed by over 150 of our members. In addition to delicious food provided by Michael Lauber, the entertainment delivered by Rita Mazer and The Songbirds was first-class. Rita and her talented ensemble sang show tunes by Jewish composers, which Rita cleverly brought together with her entertaining patter. Congrats go to Karen Androphy, Betty Crane and their dedicated committee members for arranging this hugely successful experience.

By the time this article is read, many of our members will have attended the Spanish Shabbat dinner and service, co-sponsored with Brotherhood. There also will have been a Lunch and Learn headlined by author Deborah Lakritz who spoke about her book, A Place to Belong: Debbie Friedman Sings her Way Home. This book shares events from Debbie Friedman's younger years that led to her becoming an inspiring composer, performer and teacher. We ended the month with a visit to *Embracing our Differences*, an exhibit of artwork reflecting diversity and inclusion, on February 27. Attendees enjoyed a docent-led tour of the billboards on the bayfront followed by lunch at Marina Jack.

This month will begin with our monthly book discussion, now held in

person at Temple on the first Tuesday of the month. The March discussion will center on Rising Out of Hatred by Eli Saslow. For more information, contact Karen Androphy at [teebookclub@gmail.com](mailto:teebookclub@gmail.com).

We wish our Temple family members traveling to Israel "safe journeys" as they tour the holy land in mid-March. Too bad they will miss Purim in Sarasota and the treats sponsored by Sisterhood for Misloach Manot. And let's remember that our major fundraiser, a golf tournament co-sponsored with Brotherhood, will take place at Rosedale Golf and Country Club on March 26. It is not too late to sign up to play or to support this important event by sponsoring a hole. Proceeds greatly help Sisterhood which supports many important parts of our Temple, particularly the Religious School, as well as the All Faiths Food Bank. March concludes with a concert generously sponsored by TEE members Fran and Jack Braverman and supported by Sisterhood, Brotherhood and the Adult Education Committee. This concert will feature performers from the Perlman Music Program.

Please remember to visit the Sisterhood Gift Shop; come in and browse when you are in the building. Keep in mind that proceeds from your purchase enable us to generously support Temple Emanu-El Religious School.

**Judy Fine & Harriette Krasnoff**  
Sisterhood Co-Presidents



Judy Fine and Harriette Krasnoff



## Sarasota Arthritis Center

Ronald Weitzner, M.D.  
Richard Yonker, D.O.  
Yoel Drucker, M.D.  
Robert Ikeman, M.D.  
Tatiana Huguenin, M.D.  
Bradley Weitzner, M.D.  
Jaishree Manohar, M.D.  
Cindy Johnston, M.D.  
Kimberly Lyn Shue, M.D.

Jesse Boodoo, M.D.  
Amparo Gordian, M.D.  
Kaitlin Lima, M.D.



1945 Versailles St.  
Sarasota, FL 34239  
P: 941-365-0770  
F: 941-955-8984

[www.arthritiscenters.net](http://www.arthritiscenters.net)

*Excellence in Rheumatology care since 1977*

### Our other locations:

**Bradenton Arthritis Center**  
6020 State Road 70 E, #103  
Bradenton, FL 34203  
941-567-4021

**Venice Arthritis Center**  
411 Comercial Ct, Suite D  
Venice, FL 34292  
941-484-4409

**Research Center**  
1945 Versailles St, Suite 101  
Sarasota, FL 34239  
941-366-1244

## Temple Emanu-El Honors “Life & Legacy” Benefactors

At “Life & Legacy Shabbat” on Friday evening, January 20, Temple Emanu-El honored the 162 members who comprise our Legacy Society – generous members ensuring the future strength and vitality of our beloved synagogue by making a planned gift in their wills. The Legacy Society was feted with a special reception before services and given the honor of kindling the Sabbath candles as the service began.

“When I see the children in our Susan Schwaid Early Learning Center and those in our Religious School, I feel good knowing that we at Temple Emanu-El have taken steps to be sure that those children, and their children, will enjoy the Temple life we enjoy today,” Life & Legacy chair Doris Ross stated. “We stand on the shoulders of those who came before us. It is now our turn to be the shoulders for those who follow us.”



Howie Goldberg, Helene Davis, and Ken Taksen



Meredith and Al Ernst

“The beauty of Life & Legacy is that anyone and everyone can participate,” Rabbi Elaine Rose Glickman commented. “How much money a person has doesn’t matter, and the amount of the planned gift isn’t important at all. The only thing that’s important is that a participant in Life & Legacy is thinking of the future and making a commitment to keep Judaism and the synagogue alive even after we have passed. That kindness means everything.

“We deeply appreciate the visionaries at the Jewish Federation of Sarasota-Manatee who partnered with the Harold Grinspoon Foundation to bring Life & Legacy to our community in 2017, and to Temple Emanu-El’s Life & Legacy leaders for making it such an important and meaningful part of Temple life,” she added. “The program has been transformative, and we are grateful.”

“The members of the Legacy Society are the most generous,” Rabbi Brenner Glickman concluded. “They have found something to love in Temple Emanu-El and want to give it to generations to come.”

**Doris Ross**  
Endowment Committee Chair



Jeff Maggard, Dr. Dori Goldfarb, Linda Joffe, and Dr. Lowell Lakritz



Senior Rabbi Brenner Glickman, Life & Legacy Chair Doris and Irv Ross

## Philanthropy Committee Update

January 27th marked Temple Emanu-El’s first ever Cornerstone Shabbat. Rabbi Brenner Glickman thanked the 110 households who choose to sustain our beloved congregation by their donations. To celebrate the occasion a special sheet cake honoring the occasion was part of the oneg following services.

The Cornerstone Society enables the temple to fund the programs, activities, and events that make us special; to provide financial assistance to members in need, and to support our religious school and the next generation of Jews. Please contact Barry Gerber, Philanthropy Chair at 941-228-7459 for further information on joining the society.

**Barry Gerber**  
Philanthropy Committee Chair



Barry Gerber







# Mishloach Manot

**March 10  
2023**

**Sisterhood Celebrates Purim 5783**

**Benderson  
Family Hall**

Receive your Purim Gift Bag filled with hamantaschen, treats and a grogger after Friday Shabbat Oneg.



**In the spirit of Purim,  
please consider  
becoming a sponsor.**

## Available Sponsorships

Bronze	\$25
Silver	\$50
Gold	\$75
Platinum	\$125
Other	Any amount

Make your payment online  
at [SarasotaTemple.org](https://SarasotaTemple.org)

**Submission Deadline**  
Tuesday, March 7th

**RSVP Online by Mar 7th**  
[SarasotaTemple.org](https://SarasotaTemple.org)

## Questions? Contact

Cindy Aminoff / 847-687-2292  
[cinamino@gmail.com](mailto:cinamino@gmail.com)

Sandy Schapiro / 443-655-3225  
[schapirosandy@gmail.com](mailto:schapirosandy@gmail.com)



## A Brief History of The Palestinian Conflict

**Wednesday, March 1, at 7:00**  
**Rabbi Brenner Glickman**  
Temple Emanu-El

Do you feel lost in all the news about the West Bank and Gaza? Then this session is just for you. Rabbi Brenner Glickman will give a basic introduction to the conflict between Israel and the Palestinians, with maps and timelines. We will outline the history of conflict from the time of the British Mandate until today, including the various attempts at peace along the way.

This session is in preparation for our mission to Israel in March with over 40 temple members. Though geared for travelers, this lecture is open to all temple members.



**DID YOU KNOW IF YOU LOG INTO  
YOUR SHULCLOUD ACCOUNT  
YOU CAN ACCESS "MY ACCOUNT".**

**SEE WHAT EVENTS YOU ARE  
REGISTERED FOR AND WHAT FINANCIAL  
TRANSACTIONS YOU MADE.**

## NEED TO CREATE YOUR ACCOUNT?

Contact Kim Cupani at  
[assistant@sarasotatemple.org](mailto:assistant@sarasotatemple.org)

## QUESTIONS ABOUT USING YOUR EXISTING ACCOUNT?

Contact Jeff Kessler at  
[jkessler203@gmail.com](mailto:jkessler203@gmail.com)  
or (508) 451-8594



# Adult Education Update

We are continuing our excellent programming. You will be excited to learn the details. Please mark your calendars and register for upcoming programs.

## Upcoming Courses & Events

March 19, 7:00 pm; March 20 3:00 pm & 7:00 pm, 21st 3:00 pm & 7:00 pm: **Jewish**

**Film Festival.** JFEDSRQ and AE co-hosting part of this series at TEE. See JFEDSRQ.org/Israel75 for details.

March 28, 10:30 am: Benderson. **A Journey Through the Arnold & Deanne Kaplan Collection of Early American Judaica.** Arny Kaplan. Join Arny for this very special presentation as he shares parts of their remarkable private collection of Judaica (1500s-1890). It is considered the most important collection of its kind. This program is co-hosted by AE and the Library Committee. See flyer and register on the TEE website

March 28, 7:00 pm: Sanctuary. **Perlman Music Program Suncoast Alumni Chamber Quartet.** This very special program is being generously brought to TEE by Fran & Jack Braverman and is co-sponsored by AE, BH & SH. These talented musicians were trained by Itzhak Perlman and will discuss the pieces they will play. There will be a Q&A. Members: No charge, Non-members: \$20pp. See flyer and register at TEE website.

April 19 & 26, 10:30 am-12:00 pm: Benderson. **Introduction to Writing a Legacy Letter.** Margaret Goldberger will be offering this 2-session program. Legacy letters are written to close family or friends and shared with them while the person is living or after the person passes. These letters, also known as Jewish ethical wills, can include one's values, life lessons, regrets, meaningful life experiences and anything else the writer wishes to include. You will be able to write your letter in this class. See flyer and register at TEE website.

May 18, 11:00 am: Zoom. **Museum of the Southern Jewish Experience, Part 2, Lizzi Meister, Museum of the Southern Jewish Experience,** is returning by popular demand; Lizzi will present a new aspect of the museum. Details to follow. Register at TEE website.

**Sunday at the Movies** with Howard Kilman. The fabulous January program was enjoyed by 150 people. See flyer for upcoming films. Register at TEE website.



**Hebrew Classes.** Would you like to be able to read prayers in Hebrew? Speak Hebrew on your next trip to Israel? Prepare for a B'nai Mitzvah or conversion ceremony? Once again, AE would like to provide Hebrew instruction classes. If interested, please email to judkoz1@gmail.com

We welcome suggestions for future programs, and we are eager to have TEE members join this valuable temple committee.



Judith Koziol

**Judith Koziol**  
**Adult Education**  
**Committee Chair**

## Social Action Committee: News

It is with pride that I announce that Temple Emanu-El is again the top fundraiser for All Faiths Food Bank for the seventh year in a row. Bettianne Marcus, co-chair for the High Holiday Food Drive, shared: "I am overwhelmed by the generosity of our congregants who recognized the need to meet the rising costs of food and the long-term effects of the pandemic on Sarasota-Manatee residents and met that challenge."

Social Action Committee Members volunteered on Martin Luther King Day in Newtown with Second Chance Last Opportunity to distribute books to girls and boys as a kickoff for monthly book club meetings at SCLO. SAC members will continue this support throughout the year.

Thank you to all who supported the "Spread the Love" donation drive for SPARCC (Safe Place and Rape Crisis Center).

Please remember that you can always bring food and clothing donations to the temple office year-round for distribution to Second Chance Last Opportunity.

SAC welcomes Adrienne Cohen, Gil Ben-Herut, Jadwig Brown and Phyllis Lasky as our newest committee members.

**Susan Rosenbaum**  
**Social Action Chair**





As an active member of Temple EMANU-EL, I'm committed to providing you with the highest level of service. In addition, if you select me as your trusted advisor, or refer me, I'll donate a portion of my proceeds back to the Temple in your name.



**CB COLDWELL BANKER REALTY**

**Merryl Koven, M.S., PSA, SFR,**  
*Luxury Property Specialist with Coldwell Banker*  
**(941) 526-5913 | www.MerrylKoven.com**

## THE SIGNIFICANCE OF THE WEIZMANN INSTITUTE OF SCIENCE TO ISRAEL PAST, PRESENT & FUTURE



**THURSDAY MARCH 23, 2023 @ 7PM**

Richard A. Einslein, former Vice President of the American Committee for the Weizmann Institute of Science will speak about the Weizmann Institute's history, methodologies and achievements.

**LOCATION:** Benderson Hall

**REGISTER ONLINE:** [SarasotaTemple.org/events](https://SarasotaTemple.org/events)

**QUESTIONS:** Contact Nina Levitt  
[nina.g.levitt@gmail.com](mailto:nina.g.levitt@gmail.com)



### **“Lunch with the Rabbis” Is Back In-Person!!** **Temple Emanu-El’s Popular Monthly Program** **Continues Wednesday, March 1, at Noon**

Bring a brown-bag lunch and join Senior Rabbi Brenner Glickman and Associate Rabbi Michael Shefrin for lunch, discussion of current events and topics of Jewish interest, and conversation and mingling with old and new friends (We'll provide homemade dessert!)

We look forward to sharing “Lunch with the Rabbis” – and with you!



### Calling All Mitzvah-Minded Knitters and Crocheters!

Do a KNITZVAH and use your talent to bring joy to others in Sarasota and Israel!



Who: Everyone who wants to participate - all are welcome!

When and Where: Thursdays, March 2 and 16, at 10 a.m. at Temple Emanu-El. Our group meets every first & third Thursday

What: Please bring yarn, needles, and your favorite pattern for a blanket, sweater, or more. We have extra yarn and patterns as well!

Why: We will spread love and joy by delivering our handmade creations to local organizations including JFCS, and will also send them to be enjoyed by expectant mothers and infants in Israel!

*Please join us for knitting, socializing, good deeds, and sisterhood!*

For more information, please email [lklein98@gmail.com](mailto:lklein98@gmail.com) or [judyq704@gmail.com](mailto:judyq704@gmail.com)

# Passover Seder

Led by Rabbi Brenner Glickman

Save the Date

April 5th at 6:00pm

Michael's On East  
1212 S. East Avenue, Sarasota, FL



## A Mezuzah-Making Morning for Tot Shabbat Families

Young families have found a special Jewish home at Temple Emanu-El Tot Shabbat – and Tot Shabbat enabled them to make their home more special and more Jewish with a wonderful morning on Saturday, January 21!

In addition to Tot Shabbat playground time, snacks, friendly socializing, and age-appropriate prayers, songs, stories, and birthday blessings with our wonderful rabbis, Jewish and interfaith families had the opportunity to decorate their very own mezuzah. This mezuzah-making Tot Shabbat empowered families to bring Judaism more deeply into their homes, to create a family heirloom with their children, and use arts and crafts to show what Judaism means to them. It also provided a fun and creative focus to Tot Shabbat and brought smiles and joy to all who attended – both the longtime participants and the many new faces!

“It was such a thrill to welcome

new families to our group and see the parents mingling with other parents who have come before,” Senior Rabbi Brenner Glickman commented. “There is a community here of young families, and each month is a happy reunion.”

Added Associate Rabbi Michael Shefrin, “Tot Shabbat is the best. What a joyous Shabbat morning was had by all. Laughter on the playground, creativity with our craft that sent each kiddo home with their very own mezuzah, story time and songs. Happy kiddos, parents, and grandparents all around. God was surely in this place!”

This month's Tot Shabbat will be a Havdalah evening program on Saturday, March 25, beginning at 4 p.m. Tot Shabbat is designed for Jewish and interfaith families with children up to age 6, and grandparents and special friends are always welcome. Thanks to an anonymous “angel” donor, Temple Emanu-El's Tot Shabbat is free and

open to the community. For more information, or to receive invitations to monthly Tot Shabbat events, please contact Rabbi Elaine.





## Meet New Friends

A Havurah (from the Hebrew word “haver” meaning friend) is an excellent way to connect with other Temple members who share similar interests. A Havurah is a small group who meet throughout the year primarily to socialize. Many groups also get together to celebrate Jewish life and holidays, study, work on volunteer or social action projects, discuss books or films, or go on day trips

A Havurah creates a smaller community within the larger congregation, allowing us to form deeper bonds, support one another during life’s important moments, and share experiences. For new members, a Havurah is a wonderful way to develop an extended family at our Temple. By meeting people with similar interests, and getting to know other families and build friendships, a Havurah can also inject “new life” into the Temple connection for established members.

Each Havurah is self-directed, planning its activities based on the interests of its members. Your group can do community service projects, go out to dinner followed by a speaker in the host home, have a potluck supper, attend a concert, do day trips, go on a hike, or have a discussion group on timely topics. Your group can also host Shabbat dinners, Havdalah services, Passover Seders, Hanukah parties and other holiday celebrations. It’s all up to YOU!

At Temple Emanu-El, the Membership Committee oversees the Havurah program. The number of Havurah groups is growing thanks to chairs Nikki Queen and Andi Lieberman. The two recent Havurah Kick Offs events were well attended and there is still time to get in on the fun! Please contact Nikki Queen (nmqueen1982@gmail.com) or Andi Lieberman (andil0124@icloud.com) for more information.

**Kim Sheintal and Leslie Podolsky**  
**Membership Co-Chairs**



## SSEL

The new year has brought lots of excitement to the Susan Schwaid Early Learning Center. Our students returned from Winter Break refreshed and ready to learn and have fun. As the second half of the school year begins, we are delighted to see so much growth in our students.

As a nationally accredited preschool, we must choose a curriculum to follow. The Creative Curriculum is what we have been using for many years. It is a great balance between teacher directed instruction and play-based learning. There is an immense amount of research that shows the benefits of play-based learning for preschool aged children. One might peak into our classrooms and see a room full of happy children playing with toys. What you don’t see is the authentic learning happening. Our teachers are right there interacting with the students. They are asking questions, leading conversations, and guiding the children to learn through play. Learning through play motivates, stimulates, and supports children in their development of skills, concepts, language acquisition, communication skills, and concentration.

Another key element to The Creative Curriculum is ensuring that everything our students do is developmentally appropriate. Each classroom has toys, furniture, and book catered to their individual ages. Toys are rotated out to ensure the room grows with the students. Our staff are so wonderful at creating strong relationships with the students. This helps them know what their interests are as well as their preferred learning styles. It is essential to have positive interactions with families as well. We are so glad that our parents can walk the students to the classroom each day to drop off and pick up. This creates a welcoming feel for the students, parents, and staff.

Registration is now open for the 2023-2024 school year beginning in August. If you would like to schedule a tour to learn more about our school, please call (941) 377-8074 or e-mail preschool@sarasotateemple.org.

### OUR MEMBERSHIP EXTENDS DEEPEST SYMPATHY

Craig Cohen, Betty Perlmutter,  
• Margie Socol, Maris Tuite and their  
families on the death of a loved  
• one so precious and dear.

May God’s strength and our support  
bring comfort to one and all.

## Tour Selby Gardens' Tiffany Exhibit in April

The Art Excursions group is planning a trip to Selby Gardens on Tuesday, April 25 at 10:45 am. It will feature a 90-minute docent-led tour of "Tiffany: The Pursuit of Beauty in Nature," followed by a box lunch under the banyan trees catered by Michael's on East. Participants will then be free to tour the gardens on their own and enjoy a free audio tour of the art museum. There is complimentary valet parking available.

"Tiffany: The Pursuit of Beauty in Nature" will be the first exhibition of its type to be presented in a botanical garden, a particularly appropriate setting in which to highlight the connection between Tiffany's work and the natural world. Tiffany's celebrated stained-glass windows and lamps will inspire stunning horticultural displays in the Tropical Conservatory



Tiffany lamp

and throughout the Gardens. These kaleidoscopic displays of flowers and foliage will play with light, color, and material to create a truly immersive experience that blurs the line between art and nature.

The total cost for this outing is \$62, which includes entry with the special guided tour, as well as the boxed lunch. The cost without lunch is \$44. For this event, reservations are being taken only through the temple website on the ShulCloud reservation system. Go to "upcoming events" and you will be able to click on the tour for more information and to register

"We are so fortunate to live in this wonderful community which offers all of us so many exciting art-related excursions," says Lynn Sacks, Art Excursions Chair. "Come join us and meet your fellow temple members for a fabulous day at Selby Gardens."

**Linda Joffe**  
Art Committee Co-Chair

## New Chair Joni Steinberg

The *Mi Shebeirach* embodies our collective prayer for healing those who are sick or in need of healing. The TEE Caring Committee brings the *Mi Shebeirach* to life for our congregants. As much as we would all like to think we can get through life by ourselves, the reality is everyone needs a little help every now and then. That's where our Caring Committee comes in. Based on our rich Jewish tradition of caring for our own, its mission is to provide compassionate support for our congregants who are not well, hospitalized, homebound or living alone, and others in need.

You never know what support, help, or cheer will be provided. Pip Ulin was given a Mi SheBEARach bear by Barbara Gerber. The photo of Pip

and the bear taken by Rabbi Glickman shows how we can brighten a day.

I am pleased to welcome Joni Steinberg as our new Chair of the Caring Committee. Joni has been a congregant since 2018. She has been Treasurer of the Adult Education Committee, a member of the Strategic Planning Committee, a member of the COVID Response Team, an elder caller volunteer, and a participant in the Starfish Book Buddy Program.

Through the past leadership of Mona Solomon, Barbara Gerber, Susan Skovronek and Alice D'Souza, many of you have participated in outreach efforts to members. All of your past and future efforts are greatly appreciated. As we continue our outreach, the TEE Caring Committee is seeking additional subcommittee chairs to connect volunteers with TEE members in need. If you are interested

in learning more about this opportunity, please email Joni Steinberg at [jonisteinberg8@gmail.com](mailto:jonisteinberg8@gmail.com). If you are interested in occasionally visiting TEE members in local hospitals or rehab facilities, please email Barbara Gerber at [bsgerber@comcast.net](mailto:bsgerber@comcast.net).

**Bob Meisel**  
Temple President





# Get Ready for Mitzvah Day 2023!

Save the date and get ready for Mitzvah Day 2023! On Sunday, May 7, beginning at noon, all ages and all generations will come together for a meaningful, special, and fun afternoon of *tikkun olam* and making a difference in our community and our world. There will be hands-on mitzvah projects at Temple and throughout the community, plus many opportunities to contribute to donation drives. There is a way for everyone to participate, and we hope you will be a part of it!

## MITZVAH DAY TEMPLE EMANU-EL



Sunday, May 1, 2022  
Beginning at Noon

The dedicated and talented Mitzvah Day Committee is organizing opportunities to wrap books (The purchase of books is generously underwritten by the Kaplan Foundation); prepare bag lunches for the homeless; assist local charities with clerical work; create toys and treats for adoptable pets; socialize with cats and dogs in local shelters; join a knitting circle to create

handmade items for needy little ones; assemble bags for disadvantaged and abused girls and women, supplies for chemotherapy patients, hygiene items for homeless veterans, kits for under-resourced new mothers, and comfort bags in partnership with a local senior center; provide entertainment and fun for Anchin residents; hold a car wash to raise money for tzedakah; engage in a local beach cleanup; volunteer in our Temple library; prepare and distribute hot meals for the homeless; sort food at the food bank; inaugurate the Kugel Kindness project; create a collaborative meaningful art project for display; join Lighthouse for the Blind to accompany visually-impaired people on a nature walk and picnic; make cards for hospitalized patients and Israeli and American soldiers; decorate cookies for local community heroes; donate blood; register for a bone marrow registry; and much more! We will also continue our donation drives by collecting many items to benefit our neighbors in need; please start saving nonperishable food, new dental and hygiene items, sheets and towels, baby wipes and diapers, school supplies, eyeglasses, Chap-Stick, sugar-free candy, fashionable clothing in good condition, pet items, and cosmetics and toiletries now! Finally, we are delighted to welcome back the GivingMobile, which will collect gently used items including clothing, shoes, jewelry, purses, household goods, artwork, and books to benefit Goodwill Manasota.

We are also excited to announce enhanced Mitzvah Day opportunities for school-age children, and to reprise a special Zip Code Mitzvah Project for our members in Venice and South County, an afternoon of painting stakes to mark sea turtle nests and learning about Mote's efforts to save these wonderful creatures. Finally, we will be continuing to develop a digital platform for registration to save paper and bring Mitzvah Day into the technology age!

Please watch the Message from the Temple, your email inbox, the TEE Facebook page, and more for registration information and your opportunity to sign up for the big day! And please contact Rabbi Elaine Rose Glickman, Mitzvah Day 2023 chair, with any questions.

We can't wait for Mitzvah Day 2023 on Sunday, May 7, beginning at noon, and look forward to sharing it together!

## Sisterhood Gift Shop

Get ready for Purim! **15% off all children's items in time for Purim.** Sale ends March 18, 2023.

Have a Bar/Bat Mitzvah coming up? The Sisterhood Gift Shop offers a Gift Registry. Register for items you would like to receive as gifts a few weeks prior to your event. We will include this in the announcements on Friday nights. Jewelry? Mezuzah? Candlesticks? Menorah? Shofar? The Sisterhood Gift Shop will help you select the items that are right for you! Open before and after services and special events. 100% of our proceeds are donated to our Religious School. Make an appointment with Alice Cotman at 941-359-6451 for private shopping and to order your own Tallit.

And don't forget that the Sisterhood Gift Shop sells Pew Plaques and Leaves in memory or in honor of your loved ones. See Alice or Paula in the Shop.

**Alice Cotman**  
Buyer/Manager Sisterhood Gift Shop



## Opher Library News

Libraries provide access to published materials that keep the public informed, educated and entertained. Although library items can be found elsewhere, libraries provide this access free of charge.

Archives provide access to unpublished materials that are original, one of a kind, and not available elsewhere. Examples include letters, reports, notes, memos, and photographs. Archives provide a unique window into the past. Unlike library materials, the contents of archives generally cannot be borrowed.

In February, Jonathan Brent, our Kaplan Scholar-in-Residence, spoke about the YIVO Archives, the archives of eastern European, Yiddish-speaking Jews. Dr. Brent has also authored books on the Stalin era. Our Opher library has *Inside the Stalin Archives: Discovering the New Russia* as one of its newest additions.

At the end of March, the library is thrilled to co-sponsor “A Journey Through the Arnold & Dianne Kaplan Collection of Early American Judaica.” This collection is considered the most important private collection of its kind. It illuminates the everyday lives of Jewish families, communal institutions, religious organizations, businesses, and politics in the new world. This program is co-sponsored with our Adult Education Committee. As an enhancement to this program, *The American Jewish Album: 1654 To Present*, by Allon Schoener, is also available in our library.

One whole bookshelf in the library is dedicated to our very own Temple Emanu-El archives. Dating back to the temple’s 1956 founding, we have over 26 volumes of photos and memorabil-



ia. As the first reform congregation in Sarasota, our archives help showcase the vibrancy of our members and the many special events that have enlivened our congregation over the past 67 years. I especially enjoy looking through the pictures of our sanctuary’s 1961 construction, and the photos of our previous clergy, including Rabbi Opher, to whom our library is dedicated. Our archive collection may not be borrowed, so we hope you find the time to stop into the library and enjoy this unique glimpse into our synagogue’s history.

Anyone with a TEE library card may borrow books from our library except for the archives and reference materials. Questions? Contact Rosalind Lieberman, 941-922-4517, [simone9@comcast.net](mailto:simone9@comcast.net), or Cindy Aminoff, 847-433-0153, [cinamino@gmail.com](mailto:cinamino@gmail.com)

*“Archive as if the future depends on it.” Lisbet Tellesen*

**Cindy Aminoff**  
Librarian

## January Shabbat Alive! Honors Debbie Friedman

Temple Emanu-El honored the talent, inspiration, and creativity of Debbie Friedman at a beautiful all-musical *Shabbat Alive!* service on Friday evening, January 13. Led by Senior Rabbi Brenner Glickman, Associate Rabbi Michael Shefrin, Music Director Cynthia Roberts-Greene, and professional and volunteer musicians and vocalists, *Shabbat Alive!* is a signature Temple Emanu-El worship experience that was on hold during the pandemic and has just been revived this year. The traditional prayers are offered in innovative arrangements that range from wild and energetic to serene and contemplative, providing a unique, exhilarating spirit and infusing Shabbat with special soulfulness and meaning.

Marking Debbie Friedman’s yahrzeit, this winter installment of *Shabbat Alive!* focused on her magnificent contributions to the contemporary Jewish and liturgical canon, including “Light These Lights,” Miriam’s Song,” and “Traveler’s Prayer,” as well as her arrangements of Shema/Ve’ahavta, Ve’shamru, Mishberach, and Oseh Shalom. The service was welcomed by a sanctuary full of Temple Emanu-El members and community guests who had missed *Shabbat Alive!* and yearned to hear again the *Shabbat Alive!* band lead their favorite Debbie Friedman selections.

“When we hear an entire evening of Debbie Friedman’s music, we are reminded of what a special talent she was,” Rabbi Glickman commented, “and why she stands out as the greatest of the contemporary Jewish music composers. In one moment, we are touched by an intimate spirituality, and in the next, we are dancing in the aisles and singing out loud.”



“Looking out and seeing our sanctuary filled with inspired and energized praying, dancing, and singing made *Shabbat Alive!* a truly memorable night of worship and community. The congregation and the band were on fire!” Rabbi Shefrin concluded. “I can’t wait for our next *Shabbat Alive!*”



*The Shabbat Alive! band led a beautiful all-musical service dedicated to the work of Debbie Friedman*

## SCHEDULE OF SERVICES

### MARCH 2023

**Friday, March 3**

Family Shabbat / 7:15 pm

**Friday, March 10**

Erev Shabbat / 7:15 pm

**Friday, March 17**

Erev Shabbat / 7:15 pm

**Friday, March 24**

Erev Shabbat / 7:15 pm

**Friday, March 31**

Erev Shabbat / 7:15 pm

## We're close by to serve you better.



*Robert Toale & Sons*

SARASOTA • BRADENTON • LAKEWOOD RANCH • VENICE

Jeff, Robert, and  
Jason Toale at their  
Celebration of Life  
Center at  
Lakewood Ranch

Our area has grown, and so have the services we offer. No matter what your idea of a perfect memorial is, it's likely we already have the experience comfortably providing the best service and accommodations for it.



Not affiliated with Toale Brothers Funeral Home, or Toale Brothers, Inc.

HONORED **Dignity** PROVIDER



**SARASOTA**  
170 Honore Avenue  
941-371-4962



**SARASOTA**  
7454 S. Tamiami Trail  
941-921-5755



**BRADENTON**  
1221 53rd Avenue E.  
941-755-2688



**LAKEWOOD RANCH**  
4310 Solutions Lane  
941-932-8100

**RTSFUNERALS.COM**

FRIDAY  
APRIL 21, 2023

\$30/PERSON

Benderson Family Hall

5:30-7:00pm Dinner  
7:15-8:30 pm Service

RSVP Required:  
by Friday, April 14

Register Online:  
[SarasotaTemple.org](http://SarasotaTemple.org)

# 75 ISRAEL

Come Celebrate  
Israel's 75th Birthday  
with a Special Israeli  
Dinner & Service.

A variety of Israeli food  
including vegetarian will be  
available; however, no special  
diets can be honored.



Questions?

Contact Nina Levitt  
[nina.g.levitt@gmail.com](mailto:nina.g.levitt@gmail.com)



## One Call We Do it All

- Health & Companion Care  
At Home & Institutions
- Home Management/Monitoring/Watch  
License #CGC1525635
- Handy Person and Home Improvement
- Concierge Services

941-259-8818

[www.VadorFamilyServices.com](http://www.VadorFamilyServices.com)

Owned and Managed by a Sarasota Jewish Family  
Licensed in all Service Disciplines



## Shaffer's American Custom Golf Carts

Specializing in new street legal carts

Owned and managed by  
Temple Emanu-El member, Jason Friedman  
Mention the Temple Times for \$100 off  
and \$100 donation to TEERS

7006 S Tamiami Tr  
+1 (941) 413-7910  
[americancustomgolfcarts.com](http://americancustomgolfcarts.com)



14<sup>TH</sup> ANNUAL

# MORT SKIRBOLL JEWISH FILM FESTIVAL OF SARASOTA-MANATEE



TICKETS  
GO ON  
SALE  
FEB. 28

MARCH 19 – 26, 2023

14 OUTSTANDING  
FILMS!

OPENING EVENT FILM KARAOKE  
WITH DIRECTOR  
MOSHE ROSENTHAL

SPECIAL GUEST  
ANNETTE MILLER  
FROM YOU WILL NOT  
PLAY WAGNER

For more information  
contact Jeremy Lisitza  
at [JEREMYL@JFEDSRQ.ORG](mailto:JEREMYL@JFEDSRQ.ORG)  
or 941.343.2113

[JFEDSRQ.ORG/JFF](http://JFEDSRQ.ORG/JFF)

SPONSORED BY



The Jewish Federation  
OF SARASOTA-MANATEE

### Proceeds to Benefit

All Faiths Food Bank  
and Temple Emanu-El  
community initiatives



### Golf + Luncheon

\$175 per person

### RSVP Online

[SarasotaTemple.org](http://SarasotaTemple.org)

# CHARITY GOLF TOURNAMENT

Sunday

**MARCH 26, 2023**

Rosedale Golf & Country Club  
5100 87th Street E.  
Bradenton, FL 34211

### Questions?

Contact Ken Simon  
941-251-5625  
or Dennis Reens  
941-224-8372

**7:30 am**

Registration, Photos & Warm-up

**8:30 am**

Scramble Shotgun Start

**12:30 pm**

Buffet Lunch

Silent Auction, Raffle & Awards

**HOLE SPONSORSHIPS  
AVAILABLE!**

Only \$200



## Collection of Early American Judaica

**March 28th • 10:30-11:45 am**

Benderson Family Hall

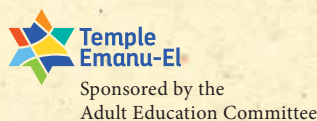
Join TEE member Army Kaplan as he presents an overview of the Arnold and Deanne Kaplan Collection of Early American Judaica (1555-1890). 45 years in the making, it consists of over 12,000 items, several of which he will show us. It is considered one of the most important collections of its kind since it documents the Jews' experience in the Americas both as Citizens and as Jews.



Arnold and Deanne Kaplan  
Collection of Early American Judaica

**Register online:** [SarasotaTemple.org](http://SarasotaTemple.org)

**For more information:** [Judith Koziol, judkoz1@gmail.com](mailto:Judith.Koziol@gmail.com)





# An Exciting Start to 2023 for Temple Emanu-El Religious School

The first weeks of 2023 were filled with excitement, learning, prizes, bagels – and plenty of meaning and joy – for the students and families of Temple Emanu-El Religious School (TEERS)!

The morning of Sunday, January 29, perfectly encapsulated the TEERS spirit. After families gathered for the welcome assembly and children went to their classrooms, parents lingered to enjoy coffee, fresh bagels, and a light breakfast while socializing with old and new friends, Senior Rabbi Brenner Glickman, Associate Rabbi Michael Shefrin, and Temple Emanu-El President Bob Meisel. Fifth-grade families then made their way to the sanctuary for the Fifth Grade Kallah – a very special morning to explore the meaning of becoming Bar/Bat/Brit Mitzvah and the significance of embarking on this sacred journey. Simultaneously, Temple Emanu-El's new Junior Sisterhood met with Rabbi Elaine Rose Glickman to plan Sunday morning activities including mahjong, a book club, and knitting as well as pilot a new Junior Shabbat experience.

The school day culminated with the much-anticipated semiannual Shuk – an opportunity for students to redeem the “shekels” they’d earned for attendance, effort, kindness, participation, and achievement for fun prizes and gifts!

“We are so grateful for the busy, happy atmosphere we feel at TEERS,” Rabbi Elaine commented. “Our Religious School Director Snait Ben-Herut inspires all of us with her dedication, creativity, expertise, and spirit, and the wonderful faculty, staff, and parent volunteers make every day special. We are looking forward to more of the same in the year ahead!”

Special events for the month ahead include Family Shabbat services on Friday, March 3, the fabulous Purim Carnival (including a festive Megillah reading, Purimshpiel, costume parade, games, crafts, prizes, rides, lunch, and of course plenty of homemade hamantashen!) on Sunday, March 5, and Junior Sisterhood mahjong, book club, knitting, and Junior Shabbat. Please mark your calendars and be a part of the amazing spirit and activities!



TEERS students enjoyed redeeming their “shekels” and claiming fun prizes and treats at the Shuk



Religious School Director Morah Snait Ben-Herut, MAJE, engages with students at the Mitzvah Table



Rabbi Brenner Glickman, Joe Feldman, Jeremy Schwimmer, Ryan Ackerman, and Jimmy Protigal enjoyed catching up over bagels at TEERS



Fifth-grade students were blessed under the tallit by Rabbi Brenner Glickman and Rabbi Michael Shefrin to conclude the Fifth Grade Kallah



# WONDERING WHAT YOUR HOME IS WORTH?

*I am always available for a discussion about **buying** or **selling** real estate—reach out today for a conversation!*



**JESSE BAUER**  
REALTOR®

941.465.8583  
jessebauer@kw.com

1549 Ringling Blvd #600  
Sarasota, FL 34236

**KW** ON THE WATER  
SARASOTA  
KELLER WILLIAMS

**SIG**  
C.H.



## Youthful Aging HOME CARE

*You may not need home care today, but be prepared and become educated on the process.*

### 30 Years of Expertise!

Personal Care • Daily Living Assistance • Light Housekeeping • Skilled Nursing • Dementia Specialists  
Respite Care & Family Relief • Inpatient Hospital Sitters  
Care Management • And Much More...



Nicci Kobritz, President

Call or Email Now For A Private Consultation  
941.925.9532 • [nkobritz@youthfulaginghomecare.com](mailto:nkobritz@youthfulaginghomecare.com)  
[youthfulaginghomecare.com](http://youthfulaginghomecare.com)

License 299991326



# Photo Gallery



Rabbi Shefrin appeared on ABC7's 'Empowering Voices' to discuss the current state of the relationship between the Jewish and African American communities. Pictured are Tatyanna Hayes, host Renee James Gilmore, Pastor John Walker, community leader Jetson Grimes, and Rabbi Michael Shefrin



Rabbi Brenner with the clergy from St. Martha's Church and the Islamic Society of Sarasota and Bradenton



Rabbi Brenner signing the Abraham pledge, in support of interfaith relationships



Rabbi Glickman speaking at the Feast of Abraham at St. Martha's Church



Blessings of gratitude and a formal dedication of our beautiful new Tallit Rack were held in our sanctuary. Thanks to our recent Adult B'nai Mitzvah cohort (Ike Koziol, Ellyn Ingalls, Wendy Starr, Jimmy Protigal, and Ruth Skole) for this generous and special gift that will enrich our ritual life here at temple.



It was a packed house for the in-person return of Sunday at the Movies when Drew Stone, the director, producer, and star of "The Jews and the Blues" came to pay his old friend Rabbi Michael Shefrin a visit. Our temple family was treated to a lively Q&A with Drew.

# because **we** CARE for you about you.

We believe your doctor should get to know you personally, have the flexibility to see you at any time, and commit to delivering benefit-oriented care and advice tailored to your unique needs.

Discover how LernerCohen puts the **CARE** in Healthcare. Schedule a meet and greet to see if concierge care is right for you.



**The Doctor Is In. Always.™**

941.953.9080 • [LernerCohen.com](http://LernerCohen.com)  
1921 Waldemere Street, Suite 814  
Sarasota, FL 34239

Dr. Brad S. Lerner | Dr. Louis M. Cohen  
Dr. James R. Cocco | Dr. Amy M. Roth





# Let's Celebrate



## MARCH ANNIVERSARIES

- 1 James & Linda Essenson
- 2 Bruce & Sabrina Silverberg
- 3 Joshua & Kelly Roberts
- 4 Dr. Jeff & Louisa Moscow
- 6 Emily & Rob Stroud
- 6 Norman & Diane Cohen
- 9 Stacy & Jamie Rosenberg
- 9 Richard & Betsy Siegel
- 15 Rich & Judy Fine
- 15 Dr. Richard & Ruth Goldman
- 18 Elise & James Ramer
- 18 Joseph & Rachael Feldman
- 18 Dr. Robert & Nancy Oppenheimer
- 19 Donna Popick & Marc Jonas
- 20 Laura & Mitchell Burchett
- 21 Brian & Sasha Goodrich
- 21 Gwen & David Murphy
- 22 Nadine & Todd Anderson
- 25 Bruce & Susan Black
- 26 Gary & Lauren Kurnov
- 27 Liana & John Bryant
- 28 Lewis & Janet Stern Solomon
- 30 Clement & Rosalind Hopp
- 31 Laurance & Barbara Newman
- 31 Brittany & Justin Gates

## MARCH BIRTHDAYS

- 1 Keith Samuels (2/29)
- 1 Katelyn Silverstein
- 1 Abe Zeewy
- 1 Kris Knoernschild
- 1 Sally Hoffman
- 1 Stephen Simons
- 2 Linda Weiss
- 2 Sasha Goodrich
- 3 Ethan Schoenfeld
- 3 Shaun Benderson
- 3 Kathy Rance
- 3 Addison Schoenfeld
- 3 Dr. Gary Janko

- 3 Zachary Kurnov
- 4 Marilyn Sachs
- 4 Chris Jefferson
- 4 David Koffman
- 4 Mitchell Cohen
- 4 Dr. Randee Gevertz
- 4 Dr. Jazmin Lesnick
- 6 Jill Berry
- 6 Dr. David Sax
- 6 Dr. Adam Heller
- 6 Albert Ernst
- 6 Wendy Feinstein
- 7 Barbara Becker
- 7 Wendy Cohen
- 7 Angela Thierman
- 8 Morielle Hoffman
- 8 Mark Freed
- 8 Gail Klein
- 8 Carol Gerber
- 9 Marsha Svirsky
- 9 Lucy Wolff
- 9 Karen Hertzfeld
- 9 Nella Benderson
- 10 Benjamin Silverstein
- 10 Alice Cotman
- 10 Neil Schlossberg
- 10 Dr. Richard Goldman
- 10 Dr. Marc Loundy
- 10 Phyllis Dreyfuss
- 10 Max Mahler
- 10 Jamie Rosenberg
- 11 Dr. Bart Levenson
- 12 Barbara Lifsec
- 12 Zoe Jefferson
- 12 Diane Chechik-Temple
- 13 Noah Goodrich
- 13 Dr. Andrea Zucker
- 15 Dr. Russell Samson
- 15 Rabbi Howard Simon
- 15 Stuart Lurie
- 15 Meryl Taback
- 15 Monica Caldwell
- 16 Nora Chapman
- 16 Samantha Gordon
- 16 Laurence G. Barnett
- 16 James Ramer
- 17 Bruce Shackman
- 17 Aiden Quisenberry

- 17 Dr. Eleanor Wachs
- 18 Brodie Benderson
- 18 Dr. Lynda Geller
- 18 Sharon Kunkel
- 18 Paul Elson
- 18 Regene Aberson
- 18 Steven Ludmerer
- 19 Dr. Marvin Geller
- 19 Stuart Bayer
- 19 Donna Popick Jonas
- 19 Laura Zalkin
- 20 Emma Podolsky
- 20 Shira Johnson
- 20 Mark Peltz
- 21 Eileen Finehirsh
- 22 Abigail Alcock
- 22 Katelin Alcock
- 22 Dr. Martin Schor
- 23 Jo Ella Rutstein
- 23 David Wyant
- 23 Marc Price
- 24 Sandra Samdperil
- 24 Lori Klein
- 25 Rosalind Hopp
- 25 Steve Weinberger
- 25 Lori Cutler
- 25 Elizabeth Klaber
- 26 Joey Hanan
- 26 Bettianne Marcus
- 26 Benjamin Labinger
- 26 Joan Wexler
- 26 Adam Amdur
- 26 Ronni Loundy
- 26 Lisa Schoenfeld
- 26 Lucas Podolsky
- 27 Russell Kramer
- 27 Max Bloom
- 27 Kalin Matechik
- 27 Jennifer Moore
- 27 Dr. Janet Hankin
- 28 Joan Blum
- 28 Hudson Bloom
- 28 Rachel Silverman
- 28 Joan Franzel
- 29 Dr. Marc Grinberg
- 29 Asher Weber
- 30 Rose Chapman
- 30 Isabel Silverman
- 30 Pauline Schonberg
- 30 Abner Beck
- 30 Rachael Witherspoon
- 31 Carole Friedman
- 31 Yael Alpert
- 31 Richard Orenstein
- 31 Dr. Howard Schapiro
- 31 Rachel Marcus

## Introduction to

## Writing a Legacy Letter

TEE member, Margaret Goldberger, will be offering a 2-session program *Introduction to Writing a Legacy Letter*. Legacy letters are written to one's closest family and friends and shared while the person is living or after the person passes. These letters, also known as Jewish ethical wills, often include one's values, life lessons, regrets, meaningful life experiences and anything else that the writer wishes to include.

Come prepared to begin writing your own letter - A wonderful opportunity to reflect upon your life and offer what matters most to you to your loved ones.



Margaret Goldberger

*April 19 + April 26*

10:30 am to 12:00 pm / Benderson Family Hall

Register Online: [SarasotaTemple.org](http://SarasotaTemple.org)

Questions? Contact Judith Koziol at [judkoz1@gmail.com](mailto:judkoz1@gmail.com)



## BRITTANY GATES

Living Vogue Real Estate  
Realtor®

(325) 721-5049

brittany@livingvogue.com

brittany.livingvogue.com



LIVING VOGUE  
REAL ESTATE

1540 Main Street  
Sarasota, FL 34236

Our family found a home at Temple Emanu-El.  
Let us help you find your next home!



## DR. MOSCOW & ASSOCIATES

Excellence in Chiropractic, Auto  
Injury, Medical & Wellness Care

(941) 954-3700

AUTO INJURIES

CHIROPRACTIC CARE

MDT PHYSICAL THERAPY

PAIN MANAGEMENT

DIGITAL X-RAY

CLASS IV LASER THERAPY

CUSTOM ORTHOTICS

MASSAGE

FRUITVILLE OFFICE PARK

3277 Fruitville Rd

Building A, Suite 2

Sarasota, FL 34237

Insurance Accepted



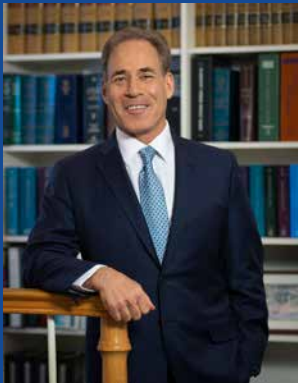
Dr. Jeffrey Moscow  
DrJMoscow.com

*Come experience our brand  
new office and check out  
our Google reviews!*



Se habla español





## M. DAVID SHAPIRO

Board Certified Civil  
Trial Attorney

Florida Supreme Court  
Certified Mediator

DShapiro@GetMeJustice.com



# SHAPIRO | DELGADO INJURY LAW

*Helping the Injured Since 1990*

## SARASOTA

308 Cocoanut Avenue, Sarasota, FL 34236  
toll free 1.800.954.4014 | office 941.954.4000 | fax 941.955.3632

## BRADENTON

5283 Office Park Boulevard, Bradenton, FL 34203  
office 941.751.0555

## THE PERLMAN MUSIC PROGRAM SUNCOAST CHAMBER MUSIC QUARTET

**TUESDAY, MARCH 28 / 7:00 PM**

TEMPLE EMANU-EL SANCTUARY  
151 MCINTOSH RD, SARASOTA

TEMPLE MEMBERS: FREE / NON-MEMBERS: \$20 PER PERSON

Come and enjoy this talented chamber music quartet from the Perlman Music Program Suncoast. These gifted musicians are alumni of the program and trained here in Sarasota with Itzhak Perlman. This program is generously sponsored by Fran and Jack Braverman and co-sponsored by Adult Ed, Brotherhood, and Sisterhood. The artists will discuss the pieces and there will be time for Q & A.

**This is a wonderful program that you will not want to miss!**



**RSVP BY MARCH 27**  
SarasotaTemple.org

### QUESTIONS?

Contact Ike Koziol: ikekoziol@me.com



Sponsored by  
Brotherhood & Sisterhood



**A STRONG NATION.  
A STRONG INVESTMENT.  
ISRAEL BONDS**

Invest in Israel Bonds · israelbonds.com



Dean Hershkowitz  
Registered Representative  
801 West Bay Drive, Suite 714  
Largo, Florida 33770  
727.282.1126  
dean.hershkowitz@israelbonds.com

This is not an offering, which can be made only by prospectus. Read the prospectus carefully before investing to fully evaluate the risks associated with investing in Israel bonds. Issues subject to availability. Member FINRA. Photo credit: Flash90



## CONTRIBUTIONS

### Adult Education Fund

#### In Honor of:

Dani Mallitz's Bat Mitzvah

*by Meredith & Al Ernst*

### Alvan Morris Music Fund

#### Yahrzeit In Memory of:

Helen Zamkoff, beloved mother

*by Rich & Judy Fine*

Jean Morris, beloved

mother-in-law

*by Suzanne Morris*

Sidney Morris, beloved

father-in-law

*by Suzanne Morris*

### Art Fund

#### In Honor of:

Helene Davis, leader extraordinary  
of the Art Committee

*by Anne Bishop*

### Endowment Fund

#### Yahrzeit In Memory of:

Norman S. Klein, beloved brother

*by Paul W. Klein*

### General Fund

#### In Appreciation of:

Nina Levitt for her  
kindness & generosity

*by Carol & Jules Green*

Rabbi Glickman's help for Aliyah

*by Paul & Melanie Musicus*

Temple Emanu-El

*by Gaunce Law*

The Mitzvah Knitters for the

blanket they made for our

grandson, Jacob Schapiro

*by Howard & Sandy Schapiro*

#### In Honor of:

Brenda & Ben Schneider's  
anniversary

*by Carol & Jules Green*

Karen & Gary Androphy's

anniversary

*by Carol & Jules Green*

Paul Kline's birthday

*by Paula & David Kaufman*

Susan Mallitz's big birthday

& Dani Mallitz's Bat Mitzvah

*by Sumner & Donna Baum*

The B'nai Mitzvah of Sharon

& Joel Garson's grandchildren

*by Sharon Linder*

#### In Memory of:

Carol Meier

*by Barbara Schenk*

#### Refuah Shleimah

Helene Myers

*by Carol & Jules Green*

#### Yahrzeit In Memory of:

Abraham Breverman,  
beloved father

*by Bettianne & Hal Marcus*

Abraham Friedman,

beloved brother

*by Howard Friedman*

Adelle Zitnick, beloved mother

*by James S. Zitnick*

Adolph Kagan,

beloved grandfather

*by Gloria & Bill Weed*

Alvin Mardon, beloved husband

*by Sandra Mardon*

Ann Phillips, beloved

grandmother

*by Jennifer & Steve Moore*

Anne Murzin, beloved

grandmother-in-law

*by Kris Knoernschild*

Arnold P. Glick, beloved brother

*by Eileen Bowman*

Barbara Goldstein Lobdell,

beloved sister

*by Judith Koziol*

Benjamin Abramowitz,

beloved father

*by Bernice Shor; Bruce Abramowitz*

Bronia Myer, beloved mother

*by Jadwiga Brown*

Charlotte Grossman,

beloved mother

*by Elaine Blum*

Dorothy Sheller, beloved mother

*by Lynn & Michael Friedman*

Dr. Foster Namias, beloved father

*by Barbara Meltzer*

Dudley Litman,

beloved grandfather-in-law

*by Kris Knoernschild*

Edwin H. Shapiro, beloved father

*by David & Robin Shapiro*

Ellen Schwartz, beloved mother

*by Elwin Schwartz*

Estelle Olan, beloved mother

*by Mitch & Lisa Olan*

Eva Seigel, beloved mother

*by Gerald & Suzette Seigel*

Florence Geller Podolsky,

beloved mother

*by Terry Wolinsky McDonald*

Freeman Lehman, beloved uncle

*by Rita Feder*

Gerald Albert Denver,

beloved father-in-law

*by Michael Pass*

Gin Harper, beloved partner

*by Susan Skovronek*

Goldie Grossman,

beloved grandmother

*by Judith Koziol*

Goldie Koziol, beloved mother

*by Ike Koziol*

Harry E. Nyman, beloved father

*by Brenda Berkeley*

Harry Friedman, beloved father

*by Lynn & Michael Friedman*

Helen Ludmerer, beloved mother

*by Steven Ludmerer*

Helen Newman, beloved mother

*by Geri & Nigel Newman*

Herb Klaber, beloved father

*by Neil Klaber*

Herbert Kuskin, beloved brother

*by Jerry Kuskin*

Herman Silverman,

beloved father

*by Carol Kraines*

Hilda R. Katz, beloved mother

*by David M. Katz*

Isidore Friedman, beloved father

*by Howard Friedman*

Jack Cohen, beloved father

*by Rookie & Jordan Shifrin*

James Edward Spertner,

beloved brother

*by Susan S. Katz*

Janice K. Gotch, beloved mother

*by David & Robin Shapiro*

Joan Spindler, beloved mother

*by David & Lisa Spindler*

Joseph Lafferman,

beloved brother-in-law

*by Mollie Lafferman*

Joseph Paskevich,

beloved father-in-law

*by Ira & Josephine Shoulson*

Katherine Litman, beloved

grandmother-in-law

*by Kris Knoernschild*

Leonard Feldstein, beloved father

*by Jack G. Feldstein*

Leonard Murzin,

beloved father-in-law

*by Kris Knoernschild*

Lilly Yoskowitz, beloved mother

*by Dr. Arnold Yoskowitz*

Lois Weil Kittredge,

beloved mother

*by Susan Feinstein*

Lou Silverglat, beloved father

*by Alan & Cindy Silverglat*

Louis Phillips,

beloved grandfather

*by Jennifer Moore*

Mae Berman, beloved mother

*by Gordon Berman;*

*Robert & Nancy Berman*

Mae Norins, beloved mother

*by Carole & Howie Friedman*

Marianne Greenblum,

beloved mother

*by David Greenblum*

Mark Murzin, beloved husband

*by Kris Knoernschild*

Martha Paskevich,

beloved mother

*by Ira & Josephine Shoulson*

Marvin Kagan, beloved uncle

*by Gloria & Bill Weed*

Maurice "Maury" Craig,

beloved father

*by Diane Chechik-Temple*

Meyer "Mike" Mustin,

beloved father

*by Anita Harris*

Michael Shlifer, beloved husband

*by Rhoda Shlifer*

Morris Lafferman,

beloved brother-in-law

*by Mollie Lafferman*

Morris Ludmerer, beloved father

*by Steven Ludmerer*

Morton Harris Schaeffer,

beloved father

*by Bernard E. Schaeffer*

Morton Schapiro, beloved father

*by Howard & Sandy Schapiro*

Murray Feldherr, beloved father

*by Barbara Becker*

Nathan Murzin, beloved

grandfather-in-law

*by Kris Knoernschild*

Nettie Blum, beloved

mother-in-law

*by Elaine Blum*

Paula Murzin, beloved mother

*by Kris Knoernschild*

Philip Bralow, beloved husband

*by Suzanne Bralow*

Philip Gorodetzer, beloved father

*by Harvey Ganot*

Philip Liftman, beloved father

*by Alvin Liftman*



Phyllis Cohen, beloved mother  
*by Jordan & Rookie Shifrin*  
 Rabbi Abraham Shoulson,  
 beloved father  
*by Ira & Josephine Shoulson*  
 Rebecca Penner Geller,  
 beloved grandmother  
*by Terry Wolinsky McDonald*  
 Richard Nierenberg,  
 beloved father  
*by Alice Cotman*  
 Rose Hershorin, beloved mother  
*by Richard Hershorin*  
 Rose Shoulson, beloved mother  
*by Ira & Josephine Shoulson*  
 Russell H. Bowman,  
 beloved husband  
*by Eileen Bowman*  
 Sara Chechik, beloved  
 daughter-in-law  
*by Diane Chechik-Temple*  
 Sidney Starr, beloved father  
*by Wendy Starr*  
 Simon Goldner, beloved father  
*by Steve Goldner*  
 Solomon Max, beloved father  
*by Dr. Martin H. Max*  
 Stanton Abrahamson,  
 beloved grandfather  
*by Josh Roberts*  
 Susan Schwaid, beloved mother  
*by Steve & Karen Schwaid*

## Music Fund

**In Honor of:**  
 Rose & Bob Chapman's  
 50th anniversary  
*by Carol & Bill Levine;  
 Jill & Scott Levine*

## Opher Library Fund

**In Honor of:**  
 Paula Reich's birthday  
*by Julie & Art Kupersmith*

## Rabbi Glickman's Discretionary Fund

**In Appreciation of:**  
 Dani Mallitz's Bat  
 Mitzvah celebration  
*by Randy & Susan Mallitz*  
 Lovely birthday blessing for  
 Ben's birthday & our anniversary  
*by Gail & Ben Klein*

Rabbi Glickman's amazing  
 work & friendship  
*by Craig & Michelle Mallitz*  
 The blessing for our anniversary  
*by Carol & Jules Green*  
 Rabbi Glickman's  
 care & well wishes  
*by Bettianne Marcus*

**In Honor of:**  
 Dr. Bruce Dorman  
*by Ronna & Gordon Baum*  
 Gary Rosenbaum's 70th birthday  
*by Susan & Gary Rosenbaum*  
 Rabbi Glickman bestowing  
 a special blessing for our  
 60th anniversary  
*by Paula & David Kaufman*

**Yahrzeit In Memory of:**  
 Bernard Isaacs, beloved father  
*by Phyllis H. Isaacs*

## Rabbi Shefrin's Discretionary Fund

**In Appreciation of:**  
 Dani Mallitz's Bat  
 Mitzvah celebration  
*by Randy & Susan Mallitz*  
 Rabbi Shefrin for everything  
 he did to help Sophia prepare  
 for her Bat Mitzvah  
*by The LeRoy Family*  
 Rabbi Shefrin's service  
 to the community  
*by The Greene Family*  
 Rabbi Shefrin's care & well wishes  
*by Bettianne Marcus*

**In Honor of:**  
 Betty Perlmutter's new home  
*by Gene & Toby Halpern*  
 Dani Mallitz's Bat Mitzvah  
*by Sumner & Donna Baum*  
 Rabbi Shefrin for making  
 our grandson Jacob Gabriel  
 Schapiro's Bris so special  
*by Howard & Sandy Schapiro*

**Refuah Shleimah**  
 Steve Hiller  
*by Gene & Toby Halpern*

**Yahrzeit In Memory of:**  
 Herbert Seidel, beloved father  
*by Barry & Leslye Seidel*

## Religious School Fund

**In Appreciation of:**  
 TEERS  
*by Jeremy Schwimmer*

**In Honor of:**  
 Dani Mallitz's Bat Mitzvah  
*by Toby & Cantor Murray Simon*  
 Snait Ben Herut  
*by Saul Sloman*

## Social Action Fund

**In Appreciation of:**  
 Social Action  
*by Anonymous*  
**In Honor of:**  
 Gary Rosenbaum's 70th birthday  
*by Laura Noble*  
 Lisa Phifer's daughter's wedding  
*by Susan & Gary Rosenbaum*

**Refuah Shleimah**  
 Bettianne Marcus  
*by Susan & Gary Rosenbaum*

## Sisterhood Fund

**In Appreciation of:**  
 All that Sisterhood does  
 for Temple Emanu-El  
*by Phyllis Dreyfuss*

## Starfish Fund

**Yahrzeit In Memory of:**  
 Morris Bernstein, beloved father  
*by Susan & Bob Meisel*

## Tot Shabbat Fund

**In Appreciation of:**  
 The Tot Shabbat Program  
*by Justin Bloom*



Family Owned. Family Focused.



At Toale Brothers, we understand the value of family in planning for the future and honoring loved ones. That's why we are still owned and operated by the Toale family, who have provided support, guidance and helpful resources to the people of our community during their time of need since 1948.

For three generations, we have remained focused on celebrating lives with compassion, respect and personal attention. Not because it is our legacy, but because we genuinely care.

**Proud to be a part of Sarasota's history.**  
**Honored to be a part of your family's celebration of life.**

[www.ToaleBrothers.com](http://www.ToaleBrothers.com) | 941.955.4171



# MARK YOUR CALENDAR

*Calendar subject to change.*

## APRIL 2023

- |   |  |
|---|--|
| 1 Torah Study . . . . . 11:00 am  | 16 Religious School: Yom HaShoah Observance. . 9:30 am<br>Annual Congregational Breakfast & Mtg. . 9:30 am   |
| 2 Brotherhood Board Meeting . . . . . 9:30 am<br>Religious School Passover Celebration. . 9:30 am                               | 17 Philanthropy Committee Meeting . . 5:00 pm<br>Zoom Social Hour. . . . . 5:00 pm<br>Board of Trustees Meeting . . . . . 5:30 pm<br>Membership Committee Meeting Zoom . . 7:00 pm |
| 3 Lunch with the Rabbis . . . . . 12:00 pm<br>Zoom Social Hour. . . . . 5:00 pm   | 19 Adult Education Program: Legacy Writing . . 10:30 am<br>Religious School . . . . . 5:30 pm<br>6th Grade Parent Meeting . . . . . 5:30 pm  |
| 4 Sisterhood Book Club: In Person. . . 1:30 pm<br>Social Justice Committee Meeting. . . 7:00 pm                                 | 20 Mitzvah Knitters . . . . . 10:00 am<br>Fluid Dance . . . . . 10:00 am<br>Brotherhood Book Club . . . . . 3:30 pm  |
| 5 Religious School / Closed<br>Passover Seder Dinner . . . . . 6:00 pm  | 21 Sisterhood Meeting . . . . . 1:00 pm<br>Israeli Shabbat Dinner . . . . . 5:30 pm<br>Erev Shabbat. . . . . 7:15 pm   |
| 6 Passover Office / Closed  | 22 Torah Study . . . . . 11:00 am  |
| 7 SSEL C / Closed – Staff Training<br>Shabbat Unplugged: Under the Stars. . 7:15 pm<br>Torah Study . . . . . 11:00 am           | 23 Relig. School: Yom Ha'atzmaut Celebration. . 9:30 am<br>Brotherhood Breakfast Program. . . 9:30 am<br>Movie Discussion: Shalom Taiwan . . 4:00 pm                               |
| 8 Young Family Seder . . . . . 5:30 pm  | 24 Zoom Social Hour. . . . . 5 pm  |
| 9 Religious School . . . . . 9:30 am<br>Confirmation Class . . . . . 10:00 am<br>Movie Discussion: Persona Non Grata. . 1:00 pm | 26 Adult Education Prog.: Legacy Writing . . 10:30 am<br>Social Action Committee Meeting: Zoom. . 1:30 pm<br>Religious School . . . . . 5:30 pm                                    |
| 10 Zoom Social Hour. . . . . 5:00 pm  | 27 Fluid Dance . . . . . 10:00 am  |
| 11 Adult Education Committee Meeting. . 10:30 am  | 28 Erev Shabbat. . . . . 7:15 pm   |
| 12 Office / Closed<br>Service with Yizkor. . . . . 10:30 am<br>Religious School . . . . . 5:30 pm                               | 29 Mikai Bridges Bar Mitzvah. . . . . 10:30 am<br>Torah Study . . . . . 11:00 am   |
| 13 Fluid Dance . . . . . 10:00 am   | 30 Religious School . . . . . 9:30 am<br>10th Grade Parent Meeting . . . . . 9:30 am   |
| 14 Religious School Family Shabbaton! . . 6:00 pm<br>Erev Shabbat. . . . . 7:15 pm  |  |
| 15 Tot Shabbat: Israel Themed. . . . . 10:00 am<br>Torah Study . . . . . 11:00 am   |  |

## TEMPLE EMANU-EL

151 McIntosh Road  
Sarasota, Florida 34232

[WWW.SARASOTATEMPLE.ORG](http://WWW.SARASOTATEMPLE.ORG)

Office .....941-371-2788  
Maintenance .....941-371-2805  
Religious School .....941-378-5567  
Pre School .....941-377-8074

**TIME VALUE**  
PLEASE DELIVER  
BY MAR 1

NON-PROFIT ORGANIZATION  
US POSTAGE  
**PAID**  
MANASOTA, FL  
PERMIT #63

## TEMPLE EMANU-EL

Rabbi ..... Brenner Glickman  
Associate Rabbi ..... Michael Shefrin  
President ..... Bob Meisel  
Immediate Past President ..... Barry Gerber  
Brotherhood President ..... Ken Simon  
Sisterhood Co-Presidents... Judy Fine, Harriette Krasnoff  
Executive Director ..... Christine Elliott  
Religious School Director. .... Snait Ben-Herut  
Susan Schwaid Early Learning Center Dir. ... Elaine Sharrock  
Choir Director/Organist .... Cynthia Roberts-Greene  
Times Editor ..... Dr. Eleanor Wachs  
Times Editorial Staff ..... Karen Gross,  
Howie Goldberg, Susan Kilman, Susan Meisel



*Greetings From*  
**AVIVA, SARASOTA**  
The Spirit of Sarasota, Brought Home

At Aviva, our residents do more than call our community home. They live here, with purpose and meaning at every turn. Embracing the beauty of Sarasota and our 27-acre campus. Curating a thriving arts and cultural scene. And ensuring your peace of mind surrounded by loving staff. As a COVID Vaccine Mandated Campus for residents, associates and vendors, Aviva is focused on safety and security for everyone in our community. [Visit us at AvivaSeniorLife.org](http://Visit us at AvivaSeniorLife.org)



1951 N. Honore Ave. | Sarasota, FL 34235  
941.377.0781 | [AvivaSeniorLife.org](http://AvivaSeniorLife.org)

Independent Living | Assisted Living | Memory Care | Skilled Nursing & Rehabilitation

Assisted Living Facility #8951 