



Temple Emanu-El Temple Times

CELEBRATING 65 YEARS | TEMPLE EMANU-EL | SARASOTA, FLORIDA | FOUNDED 1956

Rabbi's Message: A Circle of Love

She knew right away. It was love at first sight. Rabbi Elaine Rose Glickman loved Temple Emanu-El of Sarasota.

It was supposed to be the first stop in a series of interviews and visits to congregations around the country. We never made it to another congregation. A day spent with temple members and walking on Lido Beach culminated in a meeting with the members of the search committee. We connected immediately and intensely. It was so natural and right, the committee broke with protocol and offered me the job that night. I looked at Elaine – she said yes.

Elaine dreaded leaving Houston. It was her childhood home, the place where our children were born and nurtured with the support of family all around us. She had trepidation with every congregation that I considered. But it was different here. From the moment we arrived and every moment since, she felt that she was among her people and among family. There was a special kindness here, warm and haimish. It felt like home, and a community where we could raise our kids.

Rabbi Elaine bonded with the temple from the start. Immediately, the mission of the temple became her own. She became the most fervent ambassador for the temple, greeting everyone who came in late and sat alone. She chaired our Tot

Shabbat and created a community of young parents that look forward to her monthly emails to this very day. She organized and chaired our first Mitzvah Day that first year, and it remains the largest-attended annual event outside of the High Holidays. Her diligent work with the press put us on the map. Every success the temple has achieved is hers.

And when the temple suffers a blow, she feels it personally. Rabbi Elaine loves our temple. She has loved our temple from Day One, and ever since.

And the temple has loved her right back. This month, the gala committee has given us all a chance to express our love to her. The response has been tremendous. Six weeks prior, as I write this, the event has already raised more funds than any temple gala on record.

Elaine is easy to love. I jumped on the bandwagon almost 30 years ago. It was the best decision I ever made. She has cared for me and our children in all the ways she cares for the temple. She looks out for us, and takes care of us, and fights for us. I know she regards the temple as family because I see how she dotes on the

temple and worries for the temple in all the ways she dotes and worries for her own family.

It is a circle of love that we celebrate this month.

Rabbi Brenner Glickman



Rabbi Brenner Glickman

IN THIS ISSUE

President's Message	2
Executive Director's Message	3
Brotherhood	4
Sisterhood.....	5
Scholar-in-Residence.....	6
Member Spotlight.....	7
Many Shabbat Services.....	9
Opher Library	9
Adult Education Update.....	10
Membership Committee	12
SSEL January Bulletin.....	13
Social Action News	13
STEEMY & TEERS Bowling	15
6th Grade Kallah	15
Hanukkah	18-19
Tot Shabbat	20
Photo Gallery.....	21

COVID UPDATE

We continue to offer services and events in a hybrid manner.

Some activities are both in person and via Zoom or Livestream. Others are virtual only.

President's Message: Breaking News

As we transition into the New Year many things will remain the same and others will change. Rabbi Brenner Glickman announced at a recent Cornerstone Hanukkah event that the Philanthropy Committee, temporarily chaired by Michael Richker, will have a permanent chair effective 7/1/22. Yours truly has accepted that role after my present term as president ends on 6/30/22. My vision for the Philanthropy Committee is to create a Culture of Philanthropy that permeates throughout the temple's many components. My hope is that we can create this culture with the understanding of these three principles: (1.) The importance of philanthropy (2.) The link between fundraising and philanthropy and (3.) Effective organizations that embrace a culture of philanthropy.

I plan to invite new members into the committee and request current

members to commit their intent to remain as a member and to actively participate. The Cornerstone is one component of philanthropy while others like the Endowment and Life and Legacy are equally as important. While some gift giving is for the here and now, others are for the long term and sustainability of Temple Emanu-El.

Temple Emanu-El has been blessed this year with both gifts and grants set-up by our temple members and other organizations. They are as follows:

- The Alvan Morris Music Fund
- The Siegler Family Virtual Fund
- Michael Schwaider ELC Fund
- Barancik Social Action Fund
- Nonprofit Security Grant Fund
- Sarasota County Early Learning Coalition Grant

Individual restricted named funds may be set by temple members with a minimum startup of \$25,000. The Endowment also accepts donations and please contact Doris Ross, Chair of the Endowment at



Barry Gerber

dorisross @comcast.net for further information of their requirements. I plan to keep you updated on our plans for the Philanthropy Committee. Here is to health and happiness to all in the year 2022.

Barry Gerber
Temple President

This article is the last in a series to commemorate Temple Emanu-El's 65th Birthday. The articles and your testimonials will be published on the temple website. Have fun finding some of the many reasons *You Belong Here*.

Find the word in the puzzle
Words can go in any direction
Words can share letters as they cross over each other

WORDS:
Advocacy
Friendship
Rabbis
Learning
Mitzvah
Spiritual
Sabbath
Sermons
Torah
Israel

S	E	R	M	O	N	S	Y	P	U	L	V
W	I	R	Z	F	Y	M	C	I	N	A	L
Z	J	B	J	R	O	Z	A	H	B	U	E
U	P	V	B	S	B	W	C	S	S	T	A
U	R	S	W	A	N	W	O	D	A	I	R
D	W	Q	I	I	R	U	V	N	B	R	N
H	A	V	Z	T	I	M	D	E	B	I	I
Q	R	L	K	S	O	L	A	I	A	P	N
B	S	M	R	O	G	R	U	R	T	S	G
C	D	A	H	E	V	L	A	F	H	Q	O
Y	E	G	Y	X	J	N	E	H	R	Z	N
L	D	Z	F	I	N	N	H	F	M	Z	Y



Submitted by Karen Androphy

Executive Director's Message: Temple Connections and Updates



Christine Elliott

As I am writing my article for the February edition of the Temple Times, I am eagerly anticipating my oldest daughter's arrival home. Bringing in 2022 with all three of my children home is the best way for me to start the New Year. I am greatly looking forward to spending time with them. Before I sign off for my vacation, I wanted to share a special moment about my son Cole and the tem-

ple's one and only Sisterhood gift shop manager, Alice Cotman. Please allow me to provide a little backstory. Cole is a senior in high school. He has always loved interesting things, has an eye for design, is business minded, and is very particular about pretty much everything. Cole loves to browse and shop in the Sisterhood gift shop. For Christmas this year, he asked for a rocket necklace from the gift shop. Cole selected a necklace that not only looked cool but represented an important message. The rocket necklace is from a special project that was created in Israel by Yedidya and Shiran Batya. The Batyas turn pieces of Kassam rockets that were shot into Israel into pieces of handcrafted jewelry to represent turning a negative into a positive. Alice finds and selects an array of merchandise that appeals to all ages.

Whenever Cole goes into the gift shop, Alice takes time to chat with him and answer his questions about the meaning behind the merchandise he is interested in. Not only does Alice have an incredible eye for selecting and displaying beautiful merchandise, but she is also an incredible teacher. I love listening to Cole and Alice talk. Alice explains the Judaic significance of each item in such an eloquent, interesting, and clear manner that it is no wonder Cole likes to visit. Frequently, Alice's wonderful husband Ed is helping in the gift shop when Cole comes in and he always chats it up with Cole, too.

When I show potential members around temple, I make sure to point out how Temple Emanu-El has the nicest gift shop around. This is thanks to the talented and caring Alice Cotman leading the charge! Thank you, Alice and Ed, for all your efforts!

The Facilities Coordinator position remains open. Several people have applied and have been interviewed

but the right person has not come along yet. The temple operates on core staff, and it is vital for the best person to be in each position.

Covid-19 protocols will be updated to reflect the current environment, so please read your temple emails. There

are funds available to help with financial struggles due to Covid-19 so reach out to me if your temple family can help.

I look forward to seeing each of you at temple or on Zoom. Be well.

Christine Elliott
Executive Director



Cole Elliott and Alice and Ed Cotman

The Israel Committee presents:

Tips for Navigating Israel

with new olim Ken Marsh and Dr. Tanice Knopp

Temple members, Ken and Tanice will share their tips for various social situations: eating out, using public transportation, finding public restrooms - especially when tourists have free time.

They will also provide key Hebrew phrases for navigating your way through Israeli customs.



Monday
February 7
10:30 am

Via
Zoom

Register at
www.sarasotateemple.org



Our recent Meet & Greet was a great success. Prospects learned about the services and programming we provide plus the benefits of joining Brotherhood (BH). We schmoozed, ate, reviewed our events calendar, and signed up two new members. Welcome to Brotherhood Barry Furman and Marvin Geller. Thank you to the Board members who attended: Steve Leavitt, Don Malawsky, Ken Simon, Bob Meisel and Joe Ross. A brief visitation and welcome from our rabbis were much appreciated, as was our ability to once again enjoy bagels and lox in the Benderson Social Hall. New Temple Emanu-El (TEE) members receive a free Brotherhood membership through June 30 of the following calendar year. Current TEE members who have not yet joined Brotherhood can do so for as low as \$40/year. As a Brotherhood member, both groups can participate in any of our six Interest Groups immediately and receive an invitation to a complimentary Shabbat Dinner honoring the Brotherhood in the spring. Our June picnic is also free for BH members, their spouses, and children.



The Brotherhood Bocce Ball team that has perfect record on the line as of Jan. 29, 2021—we are winless—spent the month of January in preparation for a match at the Cascades. Our preparation consisted of sunning, shvitzing and noshing. Will our record stay intact? Check it out in the next edition of the *Temple Times*. This month our attention turns to sports with a Sports Night dinner program on Feb. 20 featuring eminent sports reporter Doug Fernandes. Tickets are currently on sale. On March 4th Brotherhood and Sisterhood will deliver “Shabbat Italiano”, a delicious Italian dinner buffet-style, preceding Friday night services. Discounted pricing is available through February 28.

Interest Groups- Update

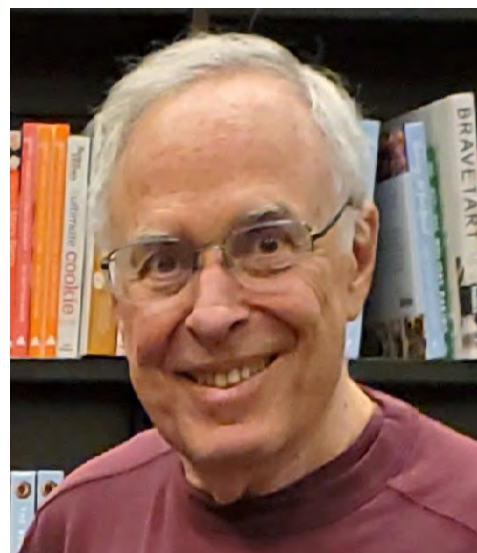
Sports: Planning is underway for another bowling event, March Madness contest, and Spring Training game. On February 20th we will attend the Brotherhood Sports Night event with Doug Fernandes for post-Super Bowl analysis and other sports commentary. Questions - contact Ken Simon at ksimon7396@aol.com.



Travel Club: This club is preparing to discuss travel issues regarding both land-based and cruise touring. On Feb. 16, we are invited to a travel seminar at the Meadows featuring the major cruise and land lines. Questions- contact Ken Simon at ksimon7396@aol.com.

Men's Book Club: On February 17, our discussion will be from the book, *The Plot Against America* by Phillip Roth, an historical fiction about the anti-war movement by the arch conservatives led by Charles Lindbergh. Questions - contact Mal Schwartz at malcolmschwartz@gmail.com.

**Rich Fine
Brotherhood President**



Rich Fine



Writing the February article during the final days of 2021 is certainly challenging. Things seem to change frequently on the COVID front and we have learned to be flexible and change as the situation dictates. We're hopeful that future events will occur as planned, but are willing to pivot, when needed, to deal with whatever comes up.

Our second co-sponsored People of the Book event took place on January 11. In-person and online attendees enjoyed visiting with Dave Barry and Alan Zweibel. On January 23, we held a fundraiser with the sale of gently used books and baked goods. A Barnes and Noble \$100 Gift Card was also raffled off. Proceeds will be going to the Temple Religious school.

On February 28, a Lunch and Learn, featuring Dianne Cogburn, MPH, LDN, RD, a nutritionist, is scheduled in the Benderson Social Hall. The lunch portion of the event will be the lunch brought by each attendee.

Though Purim is not until March, several dedicated Sisterhood members, Betty Marcus, Susan Meisel, and Ethel Gross have been busy organizing the baking and distribution of mishloach manot. Joanne Maguire has volunteered to prepare and donate the dough for the baking of the hamantaschen at the Temple.

Our interest group that was created to keep us connected during the pandemic, Sisterhood's ongoing book group, discussed "The Convert" in January, led by Suzy Morris. Susan Rosenbaum will lead the discussion of

"Observant Wife" in February. "On Division" will be discussed in March. The other newly formed groups are beginning to meet either in person or over Zoom, particularly if they are discussion groups.

Even with the many roadblocks to in person gatherings, our gift shop, capably chaired by Alice Cotman and a team of dedicated volunteers, has continued to be successful. Though mentioned frequently, this fact can never be overstated.

We conclude this article by mentioning the joyful event honoring our incredible Rabbi Elaine Glickman which will be held on Sunday, February 27. Sisterhood is honored to have Rabbi Elaine's support of our mission. She encourages us every step of the way.

Judy Fine and Harriette Krasnoff
Sisterhood Co-Presidents




**TEMPLE EMANU-EL
SISTERHOOD INVITES YOU
TO ATTEND
LUNCH & LEARN**

**ARE YOU CONFUSED ABOUT NUTRITION ADVICE?
COME & JOIN DIANNE COGBURN, MPH, LDN, RD
AS SHE TAKES YOU ON A TOUR OF
HER FIRST 10 FOOD RULES
TO CREATE A HEALTHIER YOU!**

MONDAY, FEBRUARY 28 FROM 12:00 TO 2:00

Bring your lunch
(subject to change)

Safety protocols will be followed



Temple Emanu-El Will Welcome Rabbi Karyn Kedar as Scholar-in-Residence

Temple Emanu-El is proud and delighted to welcome author, poet, and inspirational speaker Rabbi Karyn Kedar as our 2022 Kaplan Scholar-in-Residence on Friday, February 18, and Saturday, February 19. A certified Spiritual Director and acclaimed teacher of mindfulness practice, Rabbi Kedar has contributed her writings to numerous prayer-books, periodicals, and anthologies, and is the author of five books, including *Amen*, *God Whispers*, and *The Bridge to Forgiveness*. She serves Congregation B'nai Jehoshua Beth Elohim in Deerfield, Illinois, as Senior Rabbi.

"Having Rabbi Kedar as our Scholar is a wonderful way to commemorate the 50th anniversary of the ordination of the first woman Rabbi in America," Scholar-in-Residence Committee co-chair Ellen Klein remarked. "Her topics are especially appropriate in these troubled times as they speak to dealing with current issues as seen through the wisdom of our texts."

Rabbi Kedar will join Senior Rabbi Brenner Glickman and Associate Rabbi Michael Shefrin on the bimah Friday evening at 7:15 p.m. to speak on "Faith, Courage, and Wisdom: The Language of Resilience." Notes Rabbi Kedar: "Faith is an active conversation with the invisible, the knowledge that you are limited and that when you are in the center of your universe you are in a lonely place. When you recognize the sacred power of beauty and goodness you regain your balance and restore a sense of hope. Living takes courage, [and] struggle, adversity and conflict are invitations to become the hero of your life... Faith, courage, and wisdom form the foundation of resilience and fortitude."

On Saturday at 10 a.m., Rabbi Kedar will address "The Bridge to Forgiveness," exploring "six stepping-stones – loss, anger, acceptance, forgiveness, learning, and restoration" that can bring us to wholeness. Forgiveness

"carries you over an expanse to the side of life that is softer, kinder, easier to bear," she explains. "It is a shift of perspective, a new way of seeing our world, a different way of experiencing our inner life. If life is really a journey, then forgiveness is the main avenue, a path to life renewed."

Temple Emanu-El's Kaplan Scholar-in-Residence Weekend, generously underwritten by Arny and Dee Kaplan, and Charles Peck in memory of his beloved parents Joyce and Mal, is expertly chaired by Wendy Wicks and Ellen Klein. Committee members include Cindy and Dan Aminoff, Rabbi Elaine Rose Glickman, Toby Halpern, Dr. Janet Hiller, Adrienne Hutt, Arny Kaplan, Dr. Ike and Judith Koziol, Philip Meltzer, Esther Rose, and Ellen Zipin. The Kaplan Scholar-in-Residence Weekend is free and open to the community.



Rabbi Karyn Kedar

William H. Behrenfeld ATTORNEY AT LAW

TEL: (941) 365-7887

FAX: (941) 365-9094

E-MAIL: w.behrenfeld@verizon.net

www.williambehrenfeld.com

1800 Second St., Suite 790

P.O. Box 4217

Sarasota, Florida 34230-4217

Sarasota Arthritis Center



Ronald I. Weitzner, M.D.

Richard A. Yonker, D.O.

Jeffrey L. Kaine, M.D.

Yoel Drucker, M.D.

Robert L. Ikeman, M.D.

Tatiana Huguenin, M.D.

Bradley Weitzner, M.D.

Jaishree Manohar, M.D.

Cindy V. Johnston, M.D.

Kimberly Lyn Shue, M.D.

Jesse Boodoo, M.D.

1945 Versailles St.

Sarasota, Florida 34239

941-365-0770

941-955-8984 fax

www.arthritiscenters.net

Offices in Bradenton,
Venice and Englewood
are listed on the reverse

Our other offices:

Sarasota

Arthritis Research Center

1945 Versailles St., Suite 101

Sarasota, FL 34239

941 366-1244

Venice

Arthritis Center

411 Commercial Ct., Ste. D

Venice, FL 34292

941 484-4409

Bradenton

Arthritis Center

5308 4th Ave. Circle East

Bradenton, FL 34208

941 567-4021

Englewood

Arthritis Center

684 S. Indiana Ave.

Englewood, FL 34223

941 475-3839

MEMBER SPOTLIGHT

Judith Koziol

We want you to meet Judith (born in Brooklyn) Koziol. She and her husband, Ike (born in Uruguay) are from Richmond, VA. Raised in a non-traditional Jewish home, Judith recognized that she wanted more connection to traditional Judaism. Her upbringing by her parents, Rose and Jesse, and her grandparents, emphasized the importance of understanding and practicing kindness, caring, and Tikkun Olam that she has incorporated into her life.

Finding a temple in Richmond that suited her family, Judith dove into a new life of Jewish engagement. She received the Richmond Distinguished Community Service award for her multiple leadership positions in both the Jewish and local communities. Her leadership at Temple Beth Ahabah, Federation, Jewish Family Services, Russian resettlement, and the new development of the assisted living campus and the Jewish Nursing Home are only a few examples of how she participated. Judith and Ike and their sons, Michael and Robert, all participated in the temple activities and traditions. It was the type of *haimish* life she had wanted.

Considering retirement, the Koziols found Sarasota, a place where they believed they could enjoy and rediscover themselves for their new stage of life. They quickly went “shul shopping” and joined us just



before the pandemic. It felt right the moment they walked in. They had wanted a place to make friends who could feel like family and a rabbi who cared about them. They wanted the freedom to learn and grow in the coming years. Judith already had an education and experiences that enabled her to develop a deeper interest in working with seniors and enriching their lives both mentally and physically. She has already designed a new movement program for seniors that creates a sense of calm and well-being for the participants. Having helped her temple, grandparents and parents, Judith wants to share her expertise with our temple and the Sarasota senior community.

Judith joined at a time when TEE needed an immediate replacement for our Adult Education Committee leadership. She was asked if she



WELCOME!

TEMPLE EMANU-EL
WELCOMES THE
FOLLOWING MEMBERS

Burne, Janice & Thomas
Schwartz, Ansel & Janet
Thierman, David & Angela
Thierman, Phillip

OUR MEMBERSHIP EXTENDS DEEPEST SYMPATHY

to Cheryl Parnes and her family on the death of a loved one so precious and dear.

May God's strength and our support bring comfort to one and all.

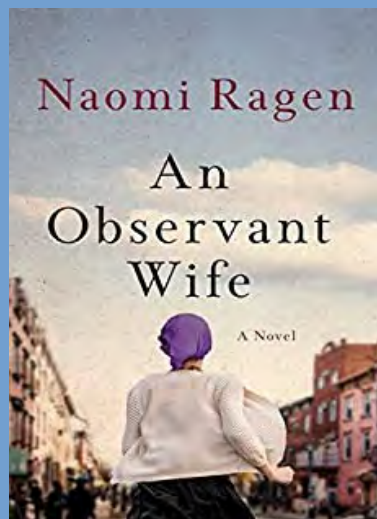
would consider it and she said, “Yes,” despite being a new member. She has discovered that Christine, the staff and former co-chairs are always available to help. She has been encouraged and applauded for stepping up.

Judith would like to work with Aviva residents and to volunteer at a hospice program, as she did in Richmond. She and Ike have found friends and warmth in our TEE family. We are so grateful for her presence and her willingness to step up to help. We believe the spotlight will be on her in the future. Welcome.

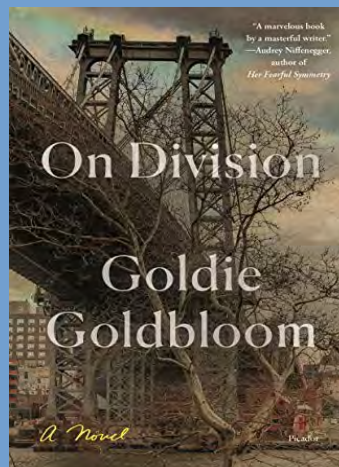
Phyllis Dreyfuss

2022 SISTERHOOD BOOK CLUB

Zoom Book Club Meeting and Discussion



Tuesday
2/1/2022
1:30 PM



Tuesday
3/1/2022
1:30 PM

Register at www.sarasotatemple.org
For more information contact Karen Androphy at: TEEBOOKCLUB@gmail.com

Sunday Movie Discussions

at 4:00 pm with Howard Kilman
Zoom Events

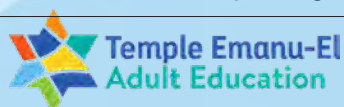
March 13
"Brothers"

March 27
"There is Many Like Us"

April 10
"Viral Antisemitism"

Watch our Message from
the Temple for updates.

Register online at
www.sarasotatemple.org



Adult Education Presents:

The Outpouring Soul of Rebbe Nachman of Breslov

A Two-Part Series with
Rabbi Michael Shefrin

Wednesdays at 7 pm
February 16 and 23

Temple Emanu-El Social Hall
151 McIntosh Rd., Sarasota, FL 34232

In person and online.

Join Rabbi Michael Shefrin in exploring a spiritual figure of universal importance, Rebbe Nachman of Breslov. A fascinating character in Jewish history, Rebbe Nachman was a brilliant mystic and also down-to-earth.

Come be awakened by some of the most entertaining stories ever told, uplifting teachings and insights into the human condition, and learn about the Hasidic spirit and the kabbalistic mystery of Rebbe Nachman.



Please register at
www.sarasotatemple.org

So Many Special Shabbat Services

Whether inside the sanctuary, outdoors on the Temple green, or online, we are proud and grateful that our wonderful rabbis, musicians, and Temple leaders make every Shabbat special with beautiful, meaningful, and welcoming worship services! Recent months have brought the happy return of our first-Friday-of-the-month Family Shabbat Services (with prayers led by our religious school students, lively and engaging music with Barbara Mazer, Gary Kurnov, and Rita Mazer, a great story from our rabbis, and special activities for kids), Shabbat Unplugged (featuring a single vocalist with piano or guitar accompaniment), and Shabbat Under the Stars (an exhilarating outdoor Friday evening service) – with all welcome to participate in-person or via livestreaming generously provided by the Siegler Family Virtual Fund.

We are excited to announce that enhanced opportunities to engage online during services are underway, and that Shabbat Under the Stars will continue and possibly expand over the coming months. We are committed to continue creating an environment in which all members of our Temple family can participate fully in Shabbat services while feeling safe and comfortable, whether attendance is primarily online or in-person. Please always feel free to reach out and share your own thoughts!

This month of February will be marked by Family Shabbat Services on Friday, February 4; our Kaplan Scholar-in-Residence Shabbat on Friday, February 18; and Life and Legacy Shabbat on Friday, February 25. (You might also wish to save the first Friday in March for Shabbat Italiano, preceded by a yummy Italian Shabbat dinner sponsored by Brotherhood and Sisterhood) And of course every Saturday morning at 11 am brings our Shabbat Torah study via Zoom – this has become a beloved and important Shabbat ritual for so many, and new attendees, of any level of experience or familiarity with Torah, are always welcome.

In the famous words of Ahad Ha'am: "More than the Jews have kept has kept the Jews." Shabbat continues to keep the Temple Emanu-El family – and the Temple Emanu-El family, in turn, enjoys so many ways to keep Shabbat together!



Opher Library: Book Review of Outwitting History

Many of you have read the article in *The Jewish News of Sarasota and Manatee* about the National Yiddish Book Center in Amherst, Massachusetts. The article

mentions *Outwitting History* by Aaron Lansky, Founder and Director of the National Yiddish Book Center. It tells the story of how the Lansky started all the adventures he had retrieving those books and consequently founded the Yiddish Book Center.

I read that book. We have it in our Temple Emanu-el Library. If you want to read a delightful and enlightening book about how much of our Yiddish culture and history were saved, I suggest you read it too. I especially loved the description of how almost every one of his book donors made him sit down and listen to their stories about each book. While they were talking, they kept plying him with food and a glass of tea. It reminded me of my bubbe. Two other books that have been acquired by our library are *The Light of Days* by Judy Batalion, It is the untold story of Women Resistance Fighters in Hitler's Ghettos and *A Responsible Life, The Spiritual Path of Mussar* by Ira F. Stone.

We are postponing our next book sale in deference to the Sisterhood's book sale. We will have our next sale in the library during their Italian Dinner on March 4, 2022.

Any Questions or comments, please call me at 941-922-4517 or email me at simone9@comcast.net.

Rosalind Lieberman
Librarian

Will We See You at Lunch with the Rabbis?

Wonderful monthly program currently being held via Zoom

Scheduled Dates

Wednesdays,
Feb 2nd and
Mar 2nd
@ Noon



Adult Education Update

As the Adult Education Committee looks at more ways to reach congregants, I am happy to report that Rabbi Brenner Glickman came up with a great idea. His program, Jewish Dietary Laws, was an outstanding success. Over 50 people attended on Zoom. The program was recorded, and the recording was then put on YouTube. In December almost 100 people had already watched it on YouTube. Thank you, Rabbi Glickman.

Upcoming Courses & Events

Hebrew Classes with Evie Shen-Tal are continuing. Look for future classes on the temple website.

February 8, 7:00 pm: People of the Book series: A Wonderful Guy: Conversations with the Great Men of Musical Theater with Eddie Shapiro. Eddie, a theater journalist, sits down for intimate, career-encompassing conversations with 19 of Broadway's most prolific and fascinating leading men. This Federation program is co-sponsored by Adult Education, Sisterhood and Brotherhood. Register at jfedsrq.org/books or call 941-552-6305.

February 16 & 23, 7:00 pm: The Outpouring Soul of Rebbe Nachman of Breslov presented by Rabbi Michael Shefrin. Join the rabbi in exploring Rebbe Nachman of

Breslov, a spiritual figure of universal importance. Come and be awakened by some of the most entertaining stories ever told, uplifting teaching, and insights into the human condition. Learn about the Hasidic spirit and kabbalistic mystery of Rebbe Nachman. See flyer for more information. Location to be determined.

April 26, 10:30 am: Memoirs with Bruce Black. Back by popular demand. Watch for more information in the March *Temple Times*.

May 3, 7:00pm: People of the Book series: The Great Age Reboot with Michael Roizen in Benderson Family Hall and on Livestream. This Federation program is co-sponsored by Adult Education, Sisterhood, and Brotherhood. Register at jfedsrq.org/books or call 941-552-6305 for more information.

Sunday at the Movies with Howard Kilman continues with excellent selections. February movies include *This is Where I Leave You* and *Golda*. See the temple website for additional information. Register online at www.sarasotatemple.org.

Join us for these excellent programs.

Judith Koziol

Co-chair Adult Education Committee



Family Owned. Family Focused.



TOALE BROTHERS
FUNERAL HOME, CREMATORY
& PREARRANGEMENT CENTER



**Proud to be a part of Sarasota's history.
Honored to be a part of your family's
celebration of life.**

941.955.4171 • www.ToaleBrothers.com



Temple Emanu-El's Israel Committee and
The Jewish Federation of Sarasota-Manatee Present:

Israel's High Tech Impact on the World
Special Guest Speaker: Anat Katz,

**Economic Minister for North America, in Israel's
Consulate General in New York.**



Ms. Katz is responsible for promoting Israeli-U.S. and Israeli-Canada economic and trade ties, with a strong focus on the promotion of Israeli exports, U.S. investments in Israel and bilateral research and development collaborations. She holds an MBA and a Bachelor Degree in laws (Honors Program) from the Hebrew University in Jerusalem.

Sunday, February 13 at 10:30 am via Zoom

Register at www.sarasotatemple.org

Everything you always wanted to know about TEE history but never asked.

Panel discussion with Hal Alterman, Lauren Kurnov and Kim Sheintal
Phyllis Dreyfuss, Moderator

How has the campus changed over the last 65 years?
Have the demographics changed as much as the campus?
Who were the rabbis of TEE?
Changes in the Religious School and Susan Schwaid Early Learning Center

Sunday, February 6, 2022

7 pm to 8 pm

Live in Benderson Family Hall with Wine & Cheese
and Livestream

Submit your questions to Phyllis Dreyfuss at phyllis.sarasotateemple@psdsc.net by February 3
Register at www.sarasotateemple.org by February 3

We Serve All Families

In this time of need, know who to call.

Our firms will serve your family with all precautions,
CDC guidelines, and compassionate care.

Dignity Memorial®
Robert Toale & Sons

Dignity®
MEMORIAL

LIFE WELL CELEBRATED®

RTSFunerals.com

Not affiliated with Toale Brothers Funeral Home or Toale Brothers Inc.



Susie, Jason, Jeff, Hannah, Robert and Debbie

If you or a family you know would like to discuss
options for services, cremation, Life Story Celebrations,
or returning to their home state up north,
we have answers available.

Announcing the development of a NEW FACILITY IN LAKEWOOD RANCH located near the corner of Lakewood Ranch Blvd. and 44th Ave.



PALMS MEMORIAL PARK

170 Honore Avenue, Sarasota, FL 34232
941.371.4962 • Fax 941.295.7009



WIEGAND CHAPEL

7454 South Tamiami Trail, Sarasota, FL 34231
941.921.5755 • Fax 941.923.0113



MANASOTA MEMORIAL PARK

1221 53rd Avenue East, Bradenton, FL 34203
941.755.2688 • Fax 941.201.1640



Gerry Ronkin
Jewish Liaison

LEND A HELPING HAND
TEMPLE EMANU-EL VOLUNTEER OPPORTUNITIES

Adult Education Committee
Bakers
Beautification Committee
Brotherhood
Bulletin Committee
Caring Committee
Endowment Committee
Friends of the Religious Action Center (FRAC)
Gift Shop
Greeters/Ushers
Havurah Committee
House and Grounds Committee
Information Technology (IT) Committee
Israel Committee
Library
Membership Committee
Mitzvah Day Committee
Neighborhood Ambassadors
Office Support
Philanthropy Committee
Religious School Committee
Religious School Volunteer
Shomers
Sisterhood
Social Action Committee
Starfish Initiative
Susan Schwaig Early Learning Center Volunteer
Sunshine Committee
Tot Shabbat
Volunteer Choir
Youth Group
My Special Talents: _____

Membership Committee Co-Chairs
Leslie Podolsky & Kim Sheintal

EMAIL YOUR INTERESTS OR
QUESTIONS TO LYNN SACKS AT
LYNDSACKS@YAHOO.COM
OR BRING THIS FORM TO
THE TEMPLE TO THE
ATTENTION OF LYNN.
PLEASE INCLUDE YOUR NAME,
EMAIL & TELEPHONE NUMBER.

 Temple
Emanu-El
CELEBRATING 65 YEARS

Membership Committee: Volunteer Opportunities

How can you become more involved in Temple Emanu-El? You might have thought that at one time of another. You might be a new or long-standing member of TEE and now might be just the right time. There are so many ways to do this. The Membership Committee would like to make a few suggestions. Please look at the flyer included in this month's Temple Times. We have listed many of our committees. We have also added a space for you to list any special talents that you might want to share. Lynn Sacks will forward your responses to the appropriate committee chairperson so that they can reach out to you. Remember... 'It takes a village' to get the job done. Please consider joining a committee. Not only will you make new like-minded friends but you will also enjoy the feeling of becoming more involved in our beloved temple community.

Leslie Podolsky
Kim Sheintal

Co-chairs Membership Committee

SCHEDULE OF SERVICES

FEBRUARY 2022

Friday, February 4
Family Shabbat / 7:15 pm

Saturday, February 5
Lanie Fineman Bat Mitzvah / 5:00 pm

Friday, February 11
Erev Shabbat / 7:15 pm

Friday, February 18
Erev Shabbat/Scholar-in-Residence / 7:15 pm

Friday, February 25
Life & Legacy Shabbat / 7:15 pm

Temple Emanu-El's Israel Committee Presents

Technion Innovations: Mind Body Connection



Sunday
February 20
at 10:30 am



Professor Assaf Zinger

Professor Asya Rolls

Dr. Zinger's research focuses on finding a cure for glioblastoma and treatment for RETT Syndrome and other neurodegenerative diseases.

Dr. Rolls uses state-of-the-art tools in neuroscience and immunology to understand how specific brain activity impacts the immune system.

A ZOOM EVENT

Register at www.sarasotatemple.org

 Temple Emanu-El
Israel Committee



Susan Schwaid Early Learning Center

Our SSELN students have been busy enjoying all the wonderful things that come with the winter season! We had a beautiful Hanukkah party. Rabbi Glickman led us in Shabbat services followed by some of our favorite Hanukkah songs. Then our students enjoyed a delicious snack of latkes and applesauce. They absolutely loved it!

The 3s and VPK students learned about the letter W and did some fun winter projects.

They made ice-cubes and built towers from them before they melted! They made snowflakes from cinnamon-scented applesauce dough. During Hanukkah they did a treasure hunt for plastic gelt in the sandbox. Ms. Michelle and Ms. Sue have

been working so hard to make this a special season for them.

The two-year-olds classes have been loving the cooler weather and spending so much time outside. They are working on increasing their independence and fine-tuning classroom routines. Many have learned to pedal the bikes in the Big Room and are so proud of themselves! Ms. Millie & Ms. Bente are helping these students learn to love school and create wonderful friendships.



As the new year begins, we are enrolling students for our Summer Camp program and Fall 2022 classes. We would love to have families come in for a tour and learn about our school. Please e-mail preschool@sarasotateemple.org or call (941) 377-8074 for more information.



Social Action Committee: News

Thank you for making the holidays more joyful with your donations to the Boys and Girls Club of Sarasota. Over 100 toys and about \$200 in cash and gift cards was collected.

Many thanks to Rabbi Elaine for promoting the toy drive at the Hanukkah celebration at UTC and to Bettianne Marcus who led the drive.

Social Action continued to meet its mission of Tikkun Olam by donating to the Jewish Federation of Louisville to support victims of the Kentucky Tornado.

The Social Action Committee is sponsoring a "Spread the Love" donation drive again this year throughout February for SPARCC (Safe Place and Rape Crisis Center) which offers a 24/7 shelter and support services for children and women who are victims of domestic abuse and

sexual violence.

Their wish list includes paper goods (plates, cups, napkins, paper towels), laundry and dish detergent, sponges and dish cloths, spray disinfectants and cleaners, anti-bacterial wipes, and gift cards for Target, Publix and Walmart. A collection box will be placed outside the main office, and in the sanctuary lobby, beginning February 1st. Any questions, please contact Lita Katzer at litakatzer@gmail.com. Look for a flier and more information in the weekly emails.

It is not too early to add May 22nd on your calendar for SAC's Mental Health Symposium. For further information on any of SAC's programs, please email srosenbaum28@gmail.com or call 410-707-5076.

Susan Rosenbaum
Chair Social Action Committee



Social Action delivered toys to the Boys and Girls Club of Sarasota

because **we CARE** for you about you.

We believe your doctor should get to know you personally, have the flexibility to see you at any time, and commit to delivering benefit-oriented care and advice tailored to your unique needs.

Discover how LernerCohen puts the **CARE** in Healthcare. Schedule a meet and greet to see if concierge care is right for you.



The Doctor Is In. Always.™

941.953.9080 • LernerCohen.com
1921 Waldemere Street, Suite 814
Sarasota, FL 34239

Dr. Brad S. Lerner | Dr. Louis M. Cohen
Dr. James R. Cocco | Dr. Amy M. Roth



STEEMY and TEERS Bond Through Bowling!



(Left to Right) Sam Schwartz, Sophia LeRoy, Mark Lowell, Zach Heller, Zach Kurnov, Isaac Shereff, Anna Socol, Lucy Familant

After TEERS, 6th and 7th grade students headed out together for a fun-filled afternoon at the bowling alley. They enjoyed a couple games of bowling, playing in the arcade,

and had lunch with their peers. The purpose of these outings is to give our TEERS students the chance to strengthen their friendships and create more connection between grade levels. Thank you to our temple Youth Group, STEEMY, for subsidizing this event!

There are constant opportunities at TEERS for students to bond; we have all school assembly, holiday celebrations, and more! But there is something about leaving school with your friends that introduces a whole new level of fun. Some were great bowlers, and everyone had a great time! We are looking forward to the next activity with 6th and 7th graders. We will be planning a separate outing for 4th and 5th graders as well!

Savannah Ross
STEEMY Advisor

6th Grade Kallah Marks An Important Milestone

Sunday December 19th marked an especially important milestone in our 6th grader's Jewish journey - the receiving of their personal dedicated Siddur (prayer book). Our new 7th graders were also invited to be part of this meaningful program. Our 6th graders and new 7th graders, along with their parents, gathered in the sanctuary for a study session and a blessing from our Rabbis Brenner Glickman and Michael Shefrin as they embarked on the year's journey of preparation and study for their Bar/Bat Mitzvah. Director of Education Sabrina Silverberg presented each candidate with their own dedicated Siddur which they will create personalized covers for in January in art class. We would like to wish a hearty Mazal Tov to our B'nai Mitzvah candidates and their families; we cannot wait to see each of you on the Bima for your big day!

6th Graders proudly hold their new Siddurim (prayer books); Front row, left to right: Sam Schwartz, Gavin Schoenfeld, Dani Mallitz, Ben Fairweather, Sophia LeRoy, Noah Kindred, Mikai Bridges, Leo Schwimmer and Mark Lowell; Back row, left to right: Rabbi Michael Shefrin, Ava Rosin, Emma Witherspoon, Ian Gluzman, Zachary Kurnov, Zachary Heller, Rabbi Brenner Glickman and Director of Education, Sabrina Silverberg



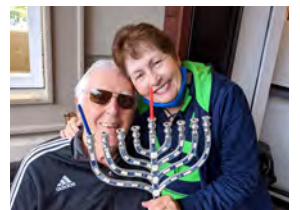


Temple Emanu-El Enjoys a Bright and Busy Hanukkah

Hanukkah is eight days long – and with about a dozen Hanukkah events, our Temple family made sure that every one of them was bright and busy! The Cornerstone Society kicked off the first night by gathering downtown for coffee and beignets at Rise and Nye's. The second and eighth nights marked the debut of our Happy Hanukkah table at Morton's Market and festive candle lightings for nearby zip codes. More fun and fabulous zip code gatherings in University Park and on Lido Beach followed on nights four and five. Our teens had a special Hanukkah gathering on night number three; our 20 through 50 somethings enjoyed a Hanukkah reception hosted by Members in the Middle and TEEM Plugged In group on the seventh night. Our young families celebrated at Glow in the Dark Hanukkah which raised \$6500 for Temple Emanu-El Religious School and brought together over 150 children, parents, and grandparents. A Pop-Up Hanukkah at The Green at UTC over Shabbat, University Town Center's first-ever outdoor Hanukkah event, hosted by Temple Emanu-El in partnership with Community Day School and UTC and then again at TEERS' all-school gathering on day seven. Finally, our entire Temple family came together for the wonderful annual Hanukkah Shabbat service, and our new signature Menorah Lighting on the Green, which featured a beautiful havdalah service and performance by the Sarasota Jewish Chorale.

Our Temple Emanu-El family is grateful to all who made Hanukkah so wonderful this year: Our Rabbis, Executive Director Christine Elliott, Director of Education Sabrina Silverberg, MARE, and Religious School Assistant Lynne Pewterbaugh, of course, and dedicated volunteers including: Kim Sheintal, Rita and Barry Mazer, Judy and Alan Wertheimer, Irv and Doris Ross, Sally and Jay Steele, Judi Sterne, Elizabeth Zeisler, Lynne Spencer, Mona Salomon, Gail Leavitt, Rachel Benderson, Savannah and Joe Ross, Michelle and Brad Pearson, Michael Lauber, Leslie Podolsky, Carole and Malcolm Schwartz, Alice Cotman, Ken Taksen, Andy Hertzfeld, Rob Stroud, Ryan Ackerman, Alex Greenberg, Elana Herman, Bettianne Marcus, Hal Marcus, Carole Friedman, Rich Fine, Harriette Krasnoff, Paula Hayden, Michael Richker, Joan Blum, Eden Glickman, Nancy Bossov, Marlies Gluck, Judy Fine, Judy Levy, Charlotte Miller, Barbara Gardner, Wendy Wicks, Ellen Klein, Diane Arch, Suzy Benjamin, and Barbara Mazer.

In this issue of the Temple Times, you'll find a fabulous photo collage of smiling celebrants enjoying the bright and busy days of Hanukkah. We hope these smiles and the spirit of Hanukkah will keep you feeling light and happy all winter long!



Saturday Morning Torah Study

2021-2022 | 5782



TORAH STUDY
11:00 AM

Come Study with Us

SATURDAY TORAH PORTION

December 4	<i>Miketz</i>
December 11	<i>Vayigash</i>
December 18	<i>Vayechi</i>
December 25	<i>Shemot</i>
January 1	<i>Vaera</i>
January 8	<i>Bo</i>
January 15	<i>Beshelach</i>
January 22	<i>Yitro</i>
January 29	<i>Mishpatim</i>
February 5	<i>Terumah</i>
February 12	<i>Tetzaveh</i>
February 19	<i>Scholar-in-Residence</i>
February 26	<i>Vayakhel</i>

PRESENTER

Rabbi Aviva Berg
Rabbi Brenner Glickman
Rabbi Elaine Rose Glickman
Rabbi Mimi Weisel
Sabrina Silverberg
Rabbi Michael Shefrin
Rabbi Mimi Weisel
Rabbi Brenner Glickman
Sabrina Silverberg
Rabbi Elaine Rose Glickman
Rabbi Michael Shefrin
Rabbi Karyn Kedar
Bruce Black

Instructor subject to change.



**VIRTUAL SESSIONS
VIA ZOOM**

www.sarasotatemple.org

WONDERING WHAT YOUR HOME IS WORTH?

Contact me for a **FREE** no obligation home value
estimate!



jessebauer@kw.com
941.465.8583

1549 Ringling Blvd #600
Sarasota, FL 34236

JESSE BAUER - REALTOR®

kw ON THE WATER
SARASOTA
KELLER WILLIAMS

SIG
CH



Youthful Aging HOME CARE

*You may not need home care
today, but be prepared and become
educated on the process.*

30 Years of Expertise!

Personal Care • Daily Living Assistance • Light
Housekeeping • Skilled Nursing • Dementia Specialists
Respite Care & Family Relief • Inpatient Hospital Sitters
Care Management • And Much More...



Nicci Kobritz, President

Call or Email Now For A Private Consultation
941.925.9532 • nkobritz@youthfulaginghomecare.com
youthfulaginghomecare.com

License 299991326



Sisterhood Celebrates Purim 5782

Mishloach Manot

We're delighted to announce Sisterhood's plan to distribute Purim gift bags.

There are 2 options for getting your Mishloach Manot (Purim) gift bag this year.

Option 1: Pick up your bag at the oneg following the Purim service and Purim Spiel on Friday March 18.

Option 2: On Friday, March 18, between 12:30 and 1:30 pm drive up to our religious school entrance to receive your Mishloach Manot bag.

Each bag will be filled with items that you will want to have including **HOMEMADE HAMANTASCHEN**, other treats and goodies, a mask, and a grogger.

Would you like to sponsor bags for our temple congregation? Make a donation at one of these levels or name your own amount.

Bronze sponsor	\$25
Silver sponsor	\$50
Gold sponsor	\$75
Platinum sponsor	\$125
Other donation	

Make your payment online at www.sarasotatemple.org.

SUBMISSION DEADLINE IS Tuesday, March 15, 2022

Bags will be delivered to Aviva, JFCS, Sarasota Bay Club, and homebound members unable to drive to temple.

Questions? Contact Bettianne Marcus at babbam2263@gmail.com or 201-988-7013.



Temple Emanu-El Sisterhood & Brotherhood

Invite You to

SHABBAT ITALIANO

Buffet Dinner featuring
Chicken Marsala, Vegetable Lasagna,
Pasta with Meatballs and Pasta Primavera

Friday, March 4, 2022

5:30 pm

Temple Emanu-El
151 McIntosh Rd., Sarasota
Benderson Family Hall
Services at 7:15

\$25 per person with advance reservation by February 28, 2022

Register online at www.sarasotatemple.org

\$35 per person after February 28, 2022

Questions? Contact Susan Meisel, susan.meisel@gmail.com or 585-797-4189

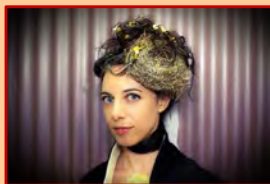


HUMOR & PLAYFULNESS IN ISRAELI ART

Tuesday, February 22 at 10 AM

VIA SABRA ZOOM SESSION

BROUGHT TO YOU BY THE ISRAEL COMMITTEE



The program is brought to you by artist Shirel Horovitz. Virtually, she invites people from around the world to explore the fascinating world of Israeli art. In this program she will explore the place of humor and playfulness through a selection of contemporary Israeli artists. Her knowledge and love of art is contagious. Her works have been exhibited in museums and galleries across Israel and the US. Join us for an informative and entertaining program.

She earned her BFA from Bezalel Academy of Art and Design in Jerusalem and her MA (with distinction) from The Interdisciplinary Art program in Tel Aviv University. Shirel exhibited in major galleries and art festivals in Israel and across the US and is currently exhibiting a new sculptural installation in Bat Yam Museum of Art.

Register at www.sarasotatemple.org

Contact Linda Weiss 941-330-2006 for questions or additional information.



2021-22 Author Lecture Series

Join us on Tuesday, February 8
from 7:00 - 8:30pm at Temple Emanu-El
for a People of the Book event featuring

Eddie Shapiro, author of A Wonderful Guy



In *A Wonderful Guy: Conversations with the Great Men of Musical Theater*, theater journalist Eddie Shapiro sits down for intimate, career-encompassing conversations with 19 of Broadway's most prolific and fascinating leading men. Full of detailed stories and reflections, his conversations with such luminaries as Joel Grey, Ben Vereen, Norm Lewis, Gavin Creel, Cheyenne Jackson, Jonathan Groff and a host of others dig deep into each actor's career. Together, these chapters tell the story of what it means to be a leading man on Broadway over the past 50 years.

"The conversations and stories, so generously told by these beautiful gentlemen, provide a moving glimpse into the complicated lives of artists." – Bebe Neuwirth

Books will be available for purchase and author signing/dedication at the event.

Tickets to attend in person are
\$18 in advance/\$25 at the door
or \$10 per household on Zoom



Authors appearing in the People of the Book series are members of the Jewish Book Council Network.

Buy your tickets to this and ALL People of the Book events at jfedsrq.org/books or call 941.343.2113

The Return of Strawberry Fields Tot Shabbat

Beginning in fall 2020, Temple Emanu-El revived our wonderful monthly Tot Shabbat program for young Jewish and interfaith families. For over a year, we have hosted children, parents, and grandparents for safe, meaningful, and joyous outdoor Tot Shabbat celebrations all over our campus: on our playground, on the Temple green, and even in the parking lot. But this month, after a two-year hiatus, we are thrilled to announce the return of our signature Tot Shabbat event – Strawberry Fields Tot Shabbat at Hunsader Farms on Saturday, February 26, at 11 a.m. Strawberry Fields Tot Shabbat welcomes young families to a enjoy Shabbat amid the natural beauty of Hunsader – playing on the playground; feeding the farm animals; participating in Shabbat songs, blessings, movement, and stories in the shade of the trees; having a Shabbat

picnic; and taking a fun train ride through Hunsader's grounds. If the u-pick-em schedule cooperates, we'll conclude by traveling to the strawberry fields and picking our own fresh strawberries! Strawberry Fields Tot Shabbat is always a favorite, and we are excited that this special event is back! Due to new restrictions at Hunsader Farms, this wonderful event is limited to 50 participants, and advance registration will be required at www.sarasotatemple.org. Thanks to the generosity of our anonymous "angel" Tot Shabbat donors, we are able to offer admission to our families at the heavily-discounted cost of



The Marcus family enjoyed our most recent Strawberry Fields Tot Shabbat, back in February 2020!

\$5/person, with a maximum of \$15/family. Please register online, and please contact Rabbi Elaine with any questions.

We can't wait to return to the strawberry fields and celebrate Shabbat with you and your family!



Greetings From
AVIVA, SARASOTA
The Spirit of Sarasota, Brought Home

At Aviva, our residents do more than call our community home. They live here, with purpose and meaning at every turn. Embracing the beauty of Sarasota and our 27-acre campus. Curating a thriving arts and cultural scene. And ensuring your peace of mind surrounded by loving staff. As a COVID Vaccine Mandated Campus for residents, associates and vendors, Aviva is focused on safety and security for everyone in our community. Visit us at AvivaSeniorLife.org

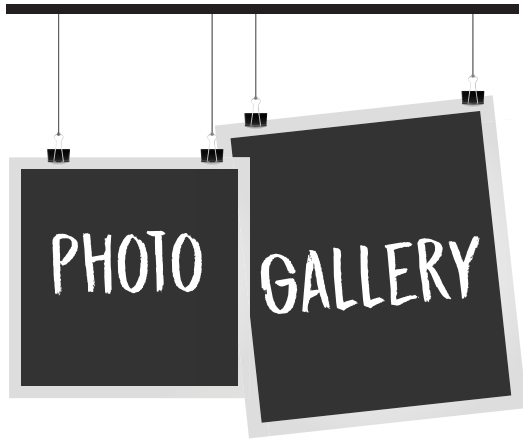


1951 N. Honore Ave. | Sarasota, FL 34235
941.377.0781 | AvivaSeniorLife.org

Independent Living | Assisted Living | Memory Care | Skilled Nursing & Rehabilitation

Assisted Living Facility #8951

Kobernick Connection



*Rabbi Brenner Glickman
and Fran Guberman*



Every month, one of Temple Emanu-El's rabbis visits with our temple members who live at Aviva Senior Center. Everyone enjoys a lively discussion of current events and temple news, as well as the opportunity for friendly conversation and casual socializing. This Spring, the rabbis will be joined in these monthly visits by Sabrina Silverberg, MARE, our Director of Education and Christine Elliott, Executive Director of our temple. It is a wonderful way for our members to stay connected to our temple and our community.



Joan Franzel, Sylvia Gross, and Louise Bick



Rabbi Glickman and Pip and Walt Ulin



Bernice and Ellis Lasberg with Meg and Aaron Kestenbaum

SAVE THE DATE!

2022 Scholar in Residence Rabbi Karyn Kedar



Friday, February 18, at 7:15 pm

Saturday, February 19, at 10 am



Do you shop online at Amazon?

Did you know you could donate to Temple Emanu-El by shopping at smile.amazon.com?

Simply log into your Amazon account through smile.amazon.com and select Temple Emanu-El as your chosen charity.

Due to purchases made in this way, over \$800 has been generated for the temple this year!



For more information contact Michael Richker
941-355-5066 / michael.richker@gmail.com

DR. MOSCOW & ASSOCIATES

Excellence in Chiropractic, Auto Injury, Medical & Wellness Care

AUTO INJURIES

CHIROPRACTIC CARE

MDT PHYSICAL THERAPY

PAIN MANAGEMENT

FRUITVILLE OFFICE PARK

3277 Fruitville Rd
Building A, Suite 2
Sarasota, FL 34237

Insurance Accepted

(941) 954-3700

DIGITAL X-RAY

CLASS IV LASER THERAPY

CUSTOM ORTHOTICS

MASSAGE



Dr. Jeffrey Moscow
DrJMoscov.com

*Come experience our brand
new office and check out
our Google reviews!*



Se habla español



FEBRUARY BIRTHDAYS

- | | | | |
|--------------------------|--------------------------|--------------------------|---------------------------|
| 1 Isaiah Cohen | 9 Wes Rosenthal | 17 Marc Levine | 23 Arthur Skop |
| 1 Dr. Helen Fagin | 9 Naomi Yamada | 17 Bruce Gibbs | 23 Diana Goodman |
| 1 Laurene Ross | 10 Eliza Lipton | 18 Derek Dobson | 24 Theodore Levey Baker |
| 1 Paula Scheiner | 10 Anita Harris | 18 Laura Kramer | 25 Kira Herman |
| 1 Judy Glickman Lauder | 10 Bob Chapman | 18 David Meese | 26 Lucy Aker |
| 2 Pam Brown | 10 Gregg Pead | 18 Zachary Klein | 26 Janis Reader Forgotson |
| 3 Bruce Udell | 11 Eliana Lesnick | 18 Carter Hankin | 27 Arthur Bernberg |
| 3 Roberta Leibowitz | 11 Alice Burd | 19 Brian Wides | 27 Brooke Feldman |
| 4 Muriel M. Stone | 11 Benjamin Shereff | 19 Geraldine Newman | 27 Kathy Docks |
| 4 Megan Heller | 11 Jamie Warren | 19 Cindy Aminoff | 27 Eileen Berke |
| 5 Dr. Mark Lewis | 12 Gwen Murphy | 19 Josie Beck | 27 Anne Bishop |
| 5 Isaac Azerad | 12 Hayden Stroud | 20 Maris Tuite | 28 Susan Rosenbaum |
| 5 Nancy Bossov | 12 Gerald Seigel | 20 Lisa Carter | 28 Eloise Friedman |
| 5 Gavin Schoenfeld | 13 Shari Kaplan Paler | 21 Jacob Feldman | 28 Arthur Marx |
| 5 Dr. Jason Wagner | 13 Jonathan Geffre | 21 Xavier Koffman | |
| 6 Jordan Heller | 14 Marvin Cohen | 21 Dr. Susan Beck | |
| 6 Lynne Spencer | 14 Jerry Blumengarten | 21 Paul Wax | |
| 6 Dr. Jeffrey Schlachter | 14 Gavan Anderson | 21 Dr. Tanice Knopp | |
| 6 Paul Hamburg | 14 Taylor McCart | 21 Barby Comins | |
| 7 Eli Hanan | 15 Rabbi Edgar Weinsberg | 21 Dr. Bernard Friedland | |
| 7 John Gudelsky | 15 Barry Furman | 22 Kala Sheckler | |
| 7 Alan Sachs | 16 Jordan Shifrin | 22 Oliver Daniel | |
| 7 Rich Fine | 16 Joel Eisenberg | 22 Andrew Bunin | |
| 7 Meredith Ernst | 16 Judy Sauertieg | 22 Courtney Rosenthal | |
| 7 Michelle Pearson | 16 Sophia LeRoy | 22 Scott Levine | |
| 7 Michael Katzer | 16 Richard Weissfeld | 22 Adrienne Hutt | |
| 8 Noe Ruth Hakim | 17 Doris Ross | 22 Louise Werbelow | |
| 8 Ken Sheckler | 17 Dr. Martin Kline | 22 Ellis Lasberg | |
| 8 Lanie Fineman | 17 Helene Davis | 23 Norah Jawitz | |
| 8 Ellis Adler | 17 Margery Shurberg | 23 Howard Berman | |

FEBRUARY ANNIVERSARIES

- 1 Jason & Faith Lipton
- 6 Jonathan & Kimberly Sheintal
- 6 Marni & Jay Abrams
- 12 Dr. Marshall & Andrea Frank
- 14 Mark & Barbara Peltz
- 14 Marc & Amy Greene
- 15 Jay & Lynn Sacks
- 16 Beth & Jay Vandroff
- 17 Juliette & Andrew Grossman
- 19 Bob & Susan Meisel
- 26 Stanley & Sandra Krawetz
- 28 Robert & Sylvia Kupferman



SUSAN SCHWAID
Early Learning Center
AT TEMPLE EMANU-EL

VPK Provider

**A Commitment to Education,
A Love of Children**

NOW ENROLLING

**FULL/PART-TIME PROGRAMS AVAILABLE FOR CHILDREN
15 MONTHS TO 5 YEARS OLD**

Nationally Accredited
Low Student - Teacher Ratio

#2 in Sarasota for Kindergarten Readiness

941-377-8074
preschool@sarasotateemple.org
www.sarasotateemple.org




CONTRIBUTIONS

Alvan Morris Music Fund

In Memory of:

Dr. Alvan Morris, beloved husband of Suzy Morris

by Marcia & Rob Simon

Dr. Lester Crawford, a wonderful person

by Suzy Morris

Refuah Shleimah:

Barbara Gerber

by Hal & Bettianne Marcus

Yahrzeit In Memory of:

Jean Morris, beloved mother-in-law

by Suzy Morris

Stephanie Morris, beloved daughter

by Suzy Morris

Endowment Fund

Refuah Shleimah:

Barbara Gerber

by Howie & Sandy Goldberg

Yahrzeit In Memory of:

Glenn Ross, beloved son

by Irving & Doris Ross

Rose Schwartz, beloved mother-in-law

by Paul W. Klein

Sydna Hyman, beloved sister

by Irving & Doris Ross

Eunice Cohen Religious School Scholarship Fund

In Honor of:

The birth of Esther Surma, daughter of Jaclyn Malat & Mark Surma

by Temple Emanu-El Sisterhood

General Fund

In Appreciation of:

Temple Emanu-El

by Barney & Judy Greenhill

In Honor of:

Dana & Marty Kline's 60th anniversary

by Paul & Roz Kline

Dr. Martin & Dana Kline

by Paula & David Kaufman

The birth of Diana & Mark Goodman's grandson,

Jaden Micah Goodman

by Sharon Linder & Doug Popp

In Memory of:

Jerry Lieberman, beloved brother of Cheryl Parnes

by Phyllis Dreyfuss

Refuah Shleimah:

Barbara Gerber

by Bill & Gloria Weed; Geri &

Nigel Newman; Phyllis Dreyfuss

Yahrzeit In Memory of:

Alyce Rabin, beloved mother

by Lori & Alan Ross

Anna Krantzle, beloved grandmother

by Julie & Art Kupersmith

Annette Reicher, beloved mother

by Marsha & Jack Feldman

Beatrice Endick, beloved sister

by Phyllis Loewengart

Beatrice Fagan, beloved mother

by Ellen & Art Zipin

Bernard Salomon, beloved husband

by Mona Salomon

Beverly Bunin-Gillman, beloved grandmother

by Andrew & Randee Bunin

Danny Ryan, beloved son

by Barbara Ryan

David Carter, beloved father

by Dan Carter

David Goldman, beloved father

by Mona Salomon

Diane Orenberg Fernandez, beloved daughter

by Edith Orenberg

Diane Orenberg Fernandez, beloved niece

by Alan R. Orenberg

Emanuel Wax, beloved father

by Paul S. Wax

Erwin Lenz, beloved father

by Judy Sauertieg

Ethel "Coots" Siegel, beloved wife

by Mort Siegel

Fannie Chinn, beloved aunt

by Eileen Bowman

Fay Nemschoff, beloved mother

by Bruce & Judy Gibbs

Gary I. Linder, beloved brother

by Sharon Linder

George Leonard Gross, beloved father

by Sharon Miles

Gishie Bloomfield, beloved mother

by Mr. & Mrs. Edward Flynn

Harry E. Nyman, beloved father

by David & Brenda Berkeley

Harvey Kemp, beloved father

by Bill & Gloria Weed

Helen Newman, beloved mother

by Geri & Nigel Newman

Helene S. Horowitz, beloved mother

by Karyn & David Wortman

Herbert Rosenthal, beloved father

by Alan & Lori Ross

Homer "Pop-Pop" LaBorwit,

beloved father

by Phyllis Dreyfuss

Jack Dunn, beloved father

by Lisa Rubinstein

Jack Yonker, beloved father

by Richard A. Yonker

Joseph Behar, beloved father

by Vic Behar

Leonard Gold, beloved husband

by Sharly Gold

Louise Ellis, beloved mother

by Judy Glickman Lauder

Marian Wicks, beloved mother

by Conrad Wicks

Martin Falk, beloved father

by Mike & Harriette Krasnoff

Martin Garson, beloved father

by Joel & Sharon Garson

Mary Franzel, beloved

mother-in-law

by Joan Franzel

Milton Shaffie, beloved father

by Susan Kilman

Morris Briefman, beloved

father-in-law

by Mark Briefman for Ruth Briefman

Morton Schapiro, beloved father

by Howard & Sandy Schapiro

Myron Harris, beloved father

by Howard & Anita Harris

Nathan Chaiken, beloved father

by Sandra & Alan Samdperil

Nettie Petzolt, beloved mother

by Joy Scherer

Pauline Carter, beloved mother

by Dan Carter

Peter Bisgeier, beloved father

by Risa Marlen

Rebecca Glick, beloved grandmother

by Eileen Bowman

Rebecca Stoller, beloved mother

by Alice Burd

Ronald Stanley Gluck, beloved brother-in-law

by Marlies Gluck

Rosalyn Joy Sparr, beloved sister

by Alan R. Orenberg

Rosalyn Joy Sparr, beloved sister-in-law

by Edith Orenberg

Sam Krantzle, beloved grandfather

by Julie & Art Kupersmith

Samuel George Upton, beloved father-in-law

by Marlies Gluck

Samuel Loundy, beloved father

by Ronni & Marc Loundy

Seymour Eisenberg, beloved father

by Joel Eisenberg

Sidney Starr, beloved father

by Wendy Starr

Sophie Krasnoff, beloved mother

by Mike & Harriette Krasnoff

Steven Jablo, beloved late husband

by Donna Jablo

William Schulman, beloved father

by Lenore Treiman

Lewis Library Fund

In Appreciation of:

The Lewis Library & Temple Emanu-El

by Jay Haire

Mitzvah Day Fund

In Appreciation of:

Mitzvah Day

by Michael & Leslie Podolsky

Yahrzeit In Memory of:

Edwin H. Shapiro, beloved father

by David & Robin Shapiro

James E. Gotch, beloved father
by David & Robin Shapiro

Janice K. Gotch, beloved mother
by David & Robin Shapiro

Music Fund

In Appreciation of:

John Sorbo accompanying the
TEE Singers on Christmas Eve
by Kathy Rance

Refuah Shleimah:

Barbara Gerber
by Kathy Rance

Yahrzeit In Memory of:

Catherine Muhlfelder,
beloved mother
by Marlies Gluck

Opher Library Fund

In Memory of:

Marsha Alpert, beloved
wife of Ira Alpert
by Roberta Berson & Frank Tucciarone

Rabbi Glickman's Discretionary Fund

In Appreciation of:

Rabbi Glickman's prayers for
our son-in-law, Ken Zerbe
by Faith & Michael Goldman

Rabbi Glickman for his prayers
and concern for our well being
by Paula & David Kaufman

Rabbi Glickman's blessing
for our anniversary
*by Judith & Ike Koziol;
Dana & Marty Kline*

Rabbi Glickman's recognition
of our birthdays
by Bob & Sharon Miles

Temple Emanu-El's
streaming services
by Elaine Sandler

In Honor of:

Al & Meredith Ernst's
50th wedding anniversary
*by Susan & Randy Mallitz;
Harriett & Ed Safran*

The bat mitzvah of Molly &
bar mitzvah of Matthew, our
twin grandchildren
by Werner & Karen Gundersheimer

Yahrzeit In Memory of:

Augusta Lasberg, beloved mother
by Ellis & Bernice Lasberg

Fannie Lowenstein,
beloved mother
by Genie & Les Aberson

Lois & Harold Rosenberg,
my beloved parents
by Anonymous

Rabbi Shefrin's Discretionary Fund

In Appreciation of:

Rabbi Shefrin for the beautiful
baby naming of our grandson,
Henry Michael
by Marcia & Rob Simon

Rabbi Shefrin for
his support & care
by Paula Reich & Family

The bat mitzvah of Molly &
bar mitzvah of Matthew, our
twin grandchildren
by Werner & Karen Gundersheimer

Yahrzeit In Memory of:
Carolyn Rubin, beloved mother
by Alec Rubin

Eduardo & Maria Marin,
beloved parents
by Eduardo Marin

Norman Rubin, beloved father
by Alec Rubin

Shirley Panaia-Baker,
beloved sister
by Betty Perlmutter

Rabbi Elaine Rose Glickman Fund

In Appreciation of:

Rabbi Elaine Rose Glickman
for extraordinary example
by Larry & Wendy Barnet

In Honor of:

The bat mitzvah of Molly &
bar mitzvah of Matthew, our
twin grandchildren
by Werner & Karen Gundersheimer

Social Action Fund

In Appreciation of:

The Social Action Committee
by Anonymous

Tot Shabbat Fund

In Memory of:

Our incredibly special &
beloved aunt, Debbie Goldfarb
by Randee & Andrew Bunin

MERRYL KOVEN
THE 3M FLORIDA REALTOR

COLDWELL BANKER
REALTY

Merryl Koven
REALTOR®, PSA

Certified Pricing
Strategy Advisor
(941) 526-5913

PSA
PRICING STRATEGY ADVISOR

www.3mfloridarealtor.com

SUNCOAST FLORIST

1227 Beneva Rd. Sarasota, FL 34232

Corner of Bahia Vista & Beneva

(941)365-6407

SUNCOASTFLORISTRY.COM

"Your neighborhood florist since 1980"

MARCH 2022

Temple Israel Trip / March 9 - 20

Susan Schwaig Early Learning Center Closed / March 14-18

- 1 Sisterhood Book Club1:30 pm
Religious School 5:30 pm
- 2 Lunch with the Rabbis12:00 pm
Religious School 5:30 pm
- 3 Fluid Dance 10:00 am
- 4 Brotherhood/Sisterhood Italiano Dinner 5:30 pm
Shabbat Italiano7:15 pm
Library Book Sale After Services
- 5 Torah Study 11:00 am
Emma Zoller Bat Mitzvah 5:00 pm
- 6 Brotherhood Board Meeting 9:30 am
Religious School9:30 am
TEERS Purim Carnival10:00 am
- 7 Zoom Social Hour 5:00 pm
- 8 Adult Education Committee Meeting10:30 am
Religious School5:30 pm
- 9 Sisterhood Board Meeting.....10:30 am
Religious School 5:30 pm
- 10 Fluid Dance10:00 am
Temple Players2:30 pm
- 11 Shabbat Unplugged 7:15 pm
- 12 Torah Study 11:00 am
- 13 Movie Discussion/Zoom: Brothers 4:00 pm
- 14 Zoom Social Hour 5:00 pm
- 15 Religious School5:30 pm
- 17 Brotherhood Book Club.....3:30 pm
- 18 Erev Shabbat 7:15 pm
- 21 Susan Schwaig Early Learning Center Re-Opens
Zoom Social Hour 5:00 pm
Philanthropy Committee Meeting 5:00 pm
Board of Trustees Meeting6:30 pm
Membership Committee Meeting7:00 pm
- 22 Religious School5:30 pm
- 23 Social Action Committee Meeting1:30 pm
Religious School5:30 pm

- 24 Adult Education Program10:30 am
- 25 Erev Shabbat 7:15 pm
- 26 Torah Study 11:00 am
- 27 Religious School9:30 am
Brotherhood Program10:00 am
Movie Discussion/Zoom: There is Many Like Us. . . 4:00 pm
- 28 Starfish Steering Committee Meeting 10:30 am
Embracing our Differences 1:30 pm
Zoom Social Hour 5:00 pm
- 29 Religious School5:30 pm
- 30 Religious School5:30 pm
- 31 Fluid Dance10:00 am
PeaceTile Project7:00 pm

SAVE THE DATE!!



Mitzvah Day Temple Emanu-El

**Sunday, May 1, 2022
Beginning at Noon**

Temple Emanu-El's Mitzvah Day is back in 2022!
Mark your calendar and plan to be a part of our signature event!

On this very special day, Temple members of all ages and interests come together for an afternoon of donation drives and hands-on service projects to benefit our community and our world. Watch the Temple Times, Temple events, and your email inbox for more information in the coming months – we can't wait to share Mitzvah Day with you!

Want more information right away?
Please contact Mitzvah Day Chair Rabbi Elaine Rose Glickman
at 379-1997 or elaine-glickman@comcast.net.

"One mitzvah leads to another." – *Mishnah Avot*

SEASON EVENTS 2022

*Join Us for a Season
of "Chai-brid" Programming!*

**Federation's Signature Events –
Your cultural connection
to all things Jewish.**

Visit
JFEDSRQ.ORG/events
to pick your cant-miss events!



**IN PERSON*
& VIRTUAL**

**If it is unsafe to gather in person, live events will be converted to Zoom.*

**To register, please visit
JFEDSRQ.ORG/events**



The Jewish Federation
OF SARASOTA-MANATEE

TEMPLE EMANU-EL

151 McIntosh Road
Sarasota, Florida 34232

WWW.SARASOTATEMPLE.ORG

Office941-371-2788
Maintenance941-371-2805
Religious School941-378-5567
Pre School941-377-8074

TIME VALUE
PLEASE DELIVER
BY FEB 1

NON-PROFIT ORGANIZATION
US POSTAGE
PAID
MANASOTA, FL
PERMIT #63

TEMPLE EMANU-EL

Rabbi Brenner Glickman
Associate RabbiMichael Shefrin
President Barry Gerber
Immediate Past President..... Ken Marsh
Brotherhood President Rich Fine
Sisterhood Co-Presidents... Judy Fine, Harriette Krasnoff
Executive Director..... Christine Elliott
Religious School Education Dir.Sabrina Silverberg
Susan Schwaib Early Learning Center Dir. ... Elaine Sharrock
Choir Director/Organist Cynthia Roberts-Greene
Times Editor..... Dr. Eleanor Wachs
Times Associate EditorSusan Kilman
Times Editorial Staff Sharly Gold,
Karen Gross, Howie Goldberg, Susan Samson



M. DAVID SHAPIRO

*Board Certified Civil
Trial Attorney*

*Florida Supreme Court
Certified Mediator*

DShapiro@GetMeJustice.com



SHAPIRO | DELGADO INJURY LAW

Helping the Injured Since 1990

SARASOTA

308 Cocoanut Avenue, Sarasota, FL 34236
toll free 1.800.954.4014 | office 941.954.4000 | fax 941.955.3632

BRADENTON

5283 Office Park Boulevard, Bradenton, FL 34203
office 941.751.0555