



# Temple Times

TEMPLE EMANU-EL | SARASOTA, FLORIDA | FOUNDED 1956

## Rabbi's Message: A Time for Whimsy

Our wonderful Sisterhood is preparing gift bags for each of us as presents for Purim. Once, again, we will drive through temple to pick up a little treat. This time, you might see some of us dressed in costume.

This seems like a strange time for silliness. A pandemic is raging, claiming the lives of hundreds of thousands of Americans. While our hope is restored with the arrival of vaccines, we know that things will get worse before they get better as the population awaits our turn. And so, our lives remain diminished, sheltered, and anxious.

Still, past generations celebrated Purim in worse circumstances. In fact, they all did. We are so privileged now we can easily forget how bad it was for our forebearers. They never knew the basic securities that we take for granted. They were routinely subjected to pogroms and angry mobs. They suffered through droughts and bad crop years, with ensuing hunger and destitution. They were afflicted with epidemics, too, many far deadlier than the one we are facing.



*Rabbi Brenner Glickman*

Yet, though it all, they never stopped celebrating Purim. Everyone needs a little levity. When our people were facing their own tormentors, it was especially fun to boo Haman and cheer his downfall. In good times, Purim is fun. In bad times, it is both fun and therapeutic.

It seems a strange time for silliness. It is the right time.

So, be sure to check your temple email for information on the gift bag pick-up. What will be in the bags? A

### EDITOR'S NOTE REGARDING THE CORONAVIRUS

All services and events are currently being held virtually or outdoors with safety guidelines in place. Please look for news and updates on the temple website and in our Eblasts.

Shabbat Services will be livestreamed at: [WWW.SARASOTATEMPEL.ORG](http://WWW.SARASOTATEMPEL.ORG)

**Stay healthy and well.**

grogger? A hamentachen? A mask for the top of our faces?

I don't know what the Sisterhood has prepared for us. I just know we need it.

**Rabbi Brenner Glickman**

## Will We See You at Lunch with the Rabbis?

Wonderful monthly program currently being held via Zoom

### Scheduled Dates

Wednesdays, February 3rd and March 3rd @ Noon



### IN THIS ISSUE

President's Message .....	2
Brotherhood .....	3
Sisterhood.....	5
Executive Director's Message .....	6
Member Spotlight .....	8-9
Membership Bonding .....	10
Hebrew Word of the Month.....	10
Starfish Initiative.....	12
Sisterhood Gift Shop .....	14
Social Action News .....	14
Mitzvah Knitting Group .....	16
Adult Education Update.....	17
Photo Galleries.....	19-22

# President's Message

Hello 2021 and goodbye to 2020! I like you, am very hopeful that with the vaccine, we can look forward to a very different 2021. As I reflect on the first six months of my presidency in spite of the current pandemic, the temple has adapted, pivoted and become more innovative in its approach to many aspects of life at Temple Emanu-El. I would like to highlight a few achievements, programs, and initiatives in my, "State of the Temple" message.

## Spiritual

Through exceptional planning and direction both Rabbi Glickman and Rabbi Shefrin directed and led virtual High Holiday Services that exceeded expectations. Just recently, both rabbis orchestrated a first ever outdoor menorah lighting ceremony for Hanukkah. In addition, along with Rabbi Elaine, they continue to bring Friday night services, torah study and havdalah into our homes via zoom and livestream. Friday night services have been enhanced by having either Cynthia, Dan or a guest musical soloist joining in with the rabbis. Tot Shabbat and family services are regularly scheduled for our younger families.

## Education

Thanks to the efforts of the Adult Education, Brotherhood, Sisterhood, Friends of Religious Action and the Israel Committee, temple members have had plenty of programs to register for during this pandemic. Sabrina Silverberg, Religious School Director of Education, has continued to direct an on-line program for our religious school students via ZOOM. At times, special events for the children have been held outdoors.

## Social

Between the Monday Social Hour with the Rabbi, Lunch with the Rabbi, neighborhood zip code gatherings, and new member zooms, every member has



Barry Gerber

an opportunity to engage with temple members.

## Organizational

The Board of Trustees had a very busy first six months. Highlighting 2020 was the re-signing of Associate Rabbi Michael Shefrin to a six-year contract through June 2026. Rabbi Shefrin is quoted as saying, "This community has been like family. In this current time of uncertainty in the world, knowing I will be working alongside the outstanding staff and phenomenal lay leadership of our temple brings a sense of security and renewal purpose."

Other milestones were the temple board approval of the creation of the Friends of the Religious Action and Governance Committees. The Governance Committee's purpose is to help

ensure good governance by creating and managing a board of the highest quality.

The Strategic Planning Group chaired by Ken Marsh has been involved in the development and eventual implementation of strategic initiatives that will ensure that Temple Emanu-El reduces external threats and takes advantage of opportunities. In 2021, Howard Kilman and Burgess Levin have agreed to co-chair this important effort since Ken and Tanice will be relocating to Israel soon. (We wish them well and thank them for all their contributions to the temple over the past number of years.) One initiative of the SPG is the Re-Invention Strategy. This is an emphasis on having all temple operations and committees reflect on what Covid-related modifications will continue after the pandemic, and to what pre-covid ways of work will continue when we return.

Lastly, a task force is currently evaluating the re-opening of the Susan Schwaid Early Learning Center for the summer and fall 2021 calendar. This five-member team is being led by our Executive Director, Christine Elliott, and a preliminary report will be made to the board at the January 18th board of trustee's monthly meeting.

Should anyone have any question or comments on my report please e-mail me at [barry@sarasotatemple.org](mailto:barry@sarasotatemple.org) or call me at 941-228-7459. I would love to hear from you.

**Barry Gerber,**  
**President**

**William H. Behrenfeld**  
ATTORNEY AT LAW

TEL: (941) 365-7887  
FAX: (941) 365-9094  
E-MAIL: [w.behrenfeld@verizon.net](mailto:w.behrenfeld@verizon.net)  
[www.williambehrenfeld.com](http://www.williambehrenfeld.com)

1800 Second St., Suite 790  
P.O. Box 4217  
Sarasota, Florida 34230-4217



Our January tribute honoring the Reverend Dr. Martin Luther King Jr., the late Congressman John Lewis and the late Supreme Court Justice Ruth Baer Ginsburg was both inspirational and well received by the Sarasota-Bradenton community. The program was led by Don Malawsky of Brotherhood in conjunction with both Sisterhood and the Social Action Committee. Reverend Charles McKenzie shared memories of Congressman John Lewis and temple member, Suzy Morris, provided a memorable reading honoring Justice Ginsburg. Greatness Beyond Measure—a local organization devoted to empowering teens—added to the richness of the event by singing music of the Civil Rights movement.

Gamers in the congregation continue to enjoy our Trivia and Bingo nights led by our “Breakout Room Expert Extraordinaire” and Master of Ceremonies, Bob Meisel. Of course, the success of our Trivia nights is attributed to the significant contributions of Susan Meisel, our “Research Queen Magnifique”. Susan continues to baffle some of us who thought we still could remember a thing or two about a thing or two. However, gamers are not dismayed because when all else fails, we eat!

Please join or TEE congregants who are enjoying our weekly Shabbat to Go Dinners prepared by caterer Michael Lauber and his team. He continues to provide us quality meals for pickup or possible delivery. At only \$18 per meal, does it pay to cook? To order these delicious meals, go to the temple website ([www.sarasotateemple.org](http://www.sarasotateemple.org)), click on “Events” and then “Shabbat To Go.”

Valentine’s Day, a day of red roses and chocolates, will be coming soon. To celebrate, we have a Brotherhood event honoring those in love. If you’re unsure on how to celebrate this love-centric day, why not spend it with Brotherhood? Keep an eye on your Tuesday temple event emails for the details.

Our Interest Groups have been successful. If you’d like to learn more about investments contact Burgess Levin ([burgess.levin@gmail.com](mailto:burgess.levin@gmail.com)) This Interest Group meets twice a month on Mondays from 10:30 pm to noon. If your interest is sports, your man is Ken Simon ([ksimon7396@aol.com](mailto:ksimon7396@aol.com)). Ken is putting together an NCAA Basketball Bracket Contest for next month. For those with an interest in performing arts, our theater group is accepting new members We have performed two play readings: vignettes from the Off-Broadway play “Oy” and most an adaptation of the Philip Roth short story, “The Conversion of the Jews”. If you’d like to hear more, or just be part of an audience to enjoy our readings, please contact me by email. Showtimes are the first Thursday of the month from 3:30-4:30 pm.

Brotherhood is looking for additional male temple members to help enhance our membership and program offerings and who would like to share their skills and make new friends. We also need members to serve on the Finance Committee who have fundraising experience. For details about membership or other Brotherhood events, please contact me by email, Rich Fine [richfine.tee@gmail.com](mailto:richfine.tee@gmail.com). Brotherhood President.

**Rich Fine,  
Brotherhood President**



# WELCOME!

**TEMPLE EMANU-EL WELCOMES  
THE FOLLOWING MEMBERS**

Albright, Allison & Brian & Family  
Moore, Jennifer & Stephen  
Singer, Mary Ann “Skipper” & (Ezra)

## Sunday Movie Discussions

at 4:00 pm with Howard Kilman

Zoom Events

February 7  
“The Testament”

February 14  
“A Borrowed Identity”

February 21  
“The Resistance Banker”

February 28  
“Operation Finale”

*Watch our Message from  
the Temple for updates.*

*Register online:  
[www.sarasotateemple.org](http://www.sarasotateemple.org)*





# Hebrew Classes

Winter 2021 VIA ZOOM

You must register and pay online  
at [www.sarasotatemple.org](http://www.sarasotatemple.org)



Evie Shen-Tal

## HEBREW CONVERSATION FOR ADVANCED

\$50 for Members / \$60 for Non-Members

Tuesdays at 9:15 am

January 5 through February 23, 2021

ZOOM  
INSTRUCTIONS WILL BE  
SENT TO YOU VIA  
EMAIL.



## HEBREW CONVERSATION FOR INTERMEDIATE

\$50 for Members / \$60 for Non-Members

Thursdays at 9:15 am

January 21 through March 11, 2021

Fee is for entire course.

Dates are subject  
to change.

The Social Action Committee

invites you to join us during February to:

## Spread the Love



SPARCC (Safe Place and Rape Crisis Center) offers a 24/7 shelter, 365 days a year, along with support services, for women and children in Sarasota and surrounding counties. Clientele are victims of domestic abuse and sexual violence.

### Wish List:

- New or used cell phones w/chargers
- Spray disinfectants & cleaners
  - Anti-bacterial wipes
  - Sponges & dish cloths
  - Laundry & dish detergent
  - Paper plates & cups
- Gift cards (Walmart, Target, Publix)

Place your donations in a  
collection box outside the  
main temple office  
throughout the month of

**FEBRUARY**

Your donations are greatly  
appreciated!

**THANK YOU!**

**TODAH RABAH!**

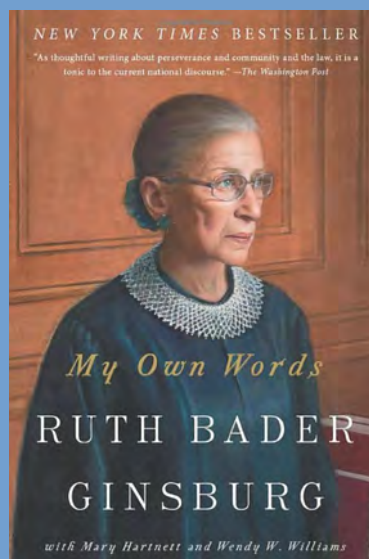


## 2021 SISTERHOOD BOOK CLUB

### Zoom Book Club Meeting and Discussion



**Tuesday**  
**2/2/2021**  
**1:30 PM**



**Tuesday**  
**3/2/2021**  
**1:30 PM**

Register at [www.sarasotatemple.org](http://www.sarasotatemple.org)

For more information contact Karen Androphy at: [TEEBOOKCLUB@gmail.com](mailto:TEEBOOKCLUB@gmail.com)

As we write the February article for the Temple Times, we have hope that better times are coming. The vaccine has arrived, many people are being inoculated, and we have a bright future to look forward to.

There was so much interesting information shared by Kim Sheintal at our 65 Years of Temple Emanu-El Celebration in January. Kim's photos and narration brought the history of TEE to life. Temple Emanu-El has seen many changes in the last 65 years, and Temple Emanu-El is definitely worth celebrating. In March 1956, nine men met to organize a Reform synagogue in Sarasota. In 1957, the Temple Emanu-El Board of Trustees voted to purchase 4.6 acres on McIntosh Road for \$1,000. In 1957, 580 McIntosh was an orange grove. Today, our temple has a beautiful campus with a state-of-the-art sanctuary, social hall, school, office wing, and of course, the Sisterhood Gift Shop.

We also had a livestream tribute to Martin Luther King, on January 17, presented by Sisterhood, Brotherhood, and Social Action Committee. There were moving tributes to Congressman John Lewis and U.S. Supreme Court Justice Ruth Bader Ginsburg. Interspersed were musical interludes provided by Greatness Beyond Measure, a group which is designed to help teens and young adults realize their maximum potential academically, socially, and artistically.

Tuesday, February 16, at 1:30 pm, Sisterhood is presenting a Virtual Tour of the exhibit, Embracing Our Differences. Please join us for a walk in the park via Zoom that is more than enjoying a sunny day at Bayfront Park. We will be doing a virtual tour of the 2021 Embracing Our Differences exhibit, a series of 50 billboard-sized works of art, each accompanied by an inspirational

quote. Each piece illuminates the theme "enriching lives through diversity and inclusion." The exhibits in the show are chosen through a juried selection process. For the 2021 exhibit, almost 16,000 entries poured in from 128 countries and 48 states. Students from 412 schools around the world submitted artwork or quotes and more than 65% of these submissions were from students.

The Sisterhood Book Club continues to meet monthly via Zoom until the temple reopens. Our books include fiction and non-fiction with a Jewish connection. Thank you again to Nina Levitt who led a thought-provoking conversation last month about the moving Israeli best-seller *House on Endless Waters* by Emuna Elon. Our next meeting is on February 2 at 1:30PM. Diana Goodman will moderate a discussion about the debut novel *Color Me In* by Natasha Diaz. Based on the author's personal experience, the story is a coming-of-age story about a half black, half Jewish girl trying to find her place in the world. Upcoming books are *My Own Words* by Ruth Bader Ginsburg (March), *Memento Park* by Mark Sarvas (April), *America's Jewish Women* by Pamela Nadell (May), and *The Third Daughter* by Talia Carner (June). The book club meets via Zoom on the first Tuesday of every month at 1:30PM. Upcoming book club dates are: February 2, March 2, April 6, May

4, and June 1. For more information, contact Karen Androphy at: [teebookclub@gmail.com](mailto:teebookclub@gmail.com).

You can still order dinners for Fridays through our Shabbat-To-Go program. Look for menus each week in the Message From the Temple on Tuesdays or in the eBlasts to Sisterhood and Brotherhood members. Thanks to everyone who supports this program. Net proceeds are used in support of the temple.

Pre-Passover sale! Save 20% on all Passover merchandise. With every Passover purchase, you are eligible to buy our 200-page Sisterhood Cookbook (which includes Passover recipes) for only \$9.00 a 50% discount.

The Sisterhood gift shop will be open by appointment only on Fridays & Sundays beginning February 5th. Sale ends February 28th. Masks are required. Contact Alice at: [alimaecot@gmail.com](mailto:alimaecot@gmail.com) or call 941-359-6451, to make an appointment.

Wishing everyone a happy Purim, Looking forward to a brighter future,

**Susan Simon and Susan Meisel,**  
**Sisterhood Co-Presidents**



Temple Emanu-El 1961



## Executive Director's Message

Jane Goodall's quote, "What you do makes a difference. And you have to decide what kind of difference you want to make." is most relevant when talking about Liana and John Bryant and their two children, Woody and Rose. The Bryant family is an exemplary family with rich history at Temple Emanu-El. Liana has literally grown up at temple. She attended the Susan Schwaid Early Learning Center (SSEL) as a preschooler herself, participated in religious education and celebrated her Bat Mitzvah at Temple Emanu-El. Liana and John were married here.

Woody and Rose are well on their way to repeat their mom's wonderful



Bryant family



history growing up at TEE. Rose attended Parent & Me with her grandmother, Kim Sheintal, when she was a baby and both children attended the SSEL when they were preschoolers. Woody now attends religious school and Rose will be starting religious school next year as a kindergartner.

Liana and John are active volunteers at TEERS, serve on committees and help with special projects. Liana serves as the Chair of the SSEL Committee and shares her many talents with us.

Last year, John was invited to join the Security Committee and he kindly agreed. John's involvement with the Security Committee has been incredibly valuable due to his professional experience as an architect. John went a step further with his temple involvement when he graciously donated his time to draw up the plans for the sanctuary emergency exit project, and also helped to oversee the project. The plan included widening the steps and adding a ramp and new handrails, which has immensely increased the safety of the emergency exit.

I am happy to share John's professional experience to highlight how fortunate we are to have his assistance.



Christine Elliott

John is a partner at Sweet Sparkman Architecture & Interiors, where his work focuses on cultural, educational, institutional, and governmental clients. He has worked on award-winning community-oriented projects including Ringling College's Basch Visual Arts Center, the new Venice Public Library, new buildings at Brentwood and Fruitville Elementary Schools, and the Siesta Key Public Beach Pavilions. John received his Master of Architecture from the University of Maryland School of Architecture, Planning, and Preservation in 2007. At the University of Maryland, he received the Dean's Thesis Award and the 2007 David M. Schwarz Traveling Fellowship, which allowed for thesis research in Japan.

Liana, John, and their sweet children are a blessing to our temple family. It is incredibly inspiring to see young temple families create the time to be involved and lead with their heart. Many, many thanks, Bryant family!

Sincerely,

**Christine Elliott,  
Executive Director**

## ISRAEL HIGH TECH INDUSTRY: PAST, PRESENT AND FUTURE



**Featuring Alexander Parnes,  
with comments by Carol Green  
on the Florida Israel Business Accelerator**



*A Zoom Event Sponsored by  
The Israel Committee and Adult Education*

**THURSDAY  
FEBRUARY 11 AT 7:00 PM**

**Alex Parnes** was born and raised in Israel, received his Bachelor of Science degree in Electrical Engineering from the Technion, Israel's Institute of Technology and a Master of Business Administration degree from the Tel-Aviv University.

As a technology executive at various high-tech companies in the US and Europe for over 25 years, he developed and oversaw the implementation of system solutions through the use software. As Chief Technology Officer of Cooper Industries Notification division, (now part of Eaton Corp.), Alex developed life-safety system solutions. Those systems were deployed at military bases, industrial plants, oil and gas, healthcare, and other facilities around the world.

**Carol Green**, a member of Temple Emanu-El, will describe the Florida-Israel Business Accelerator (FIBA), headquarters in Sarasota at the Jewish Federation campus. FIBA accesses Israel's most cutting edge - high tech companies, to connect them with investors and business partners and hopefully bring high tech, well paying jobs to Florida.



**Please register at  
[www.sarasotateemple.org](http://www.sarasotateemple.org)**

Brotherhood & Sisterhood  
Bring You:

## SHABBAT-TO-GO

*Enjoy a Shabbat dinner together in spirit  
while physically-distanced at home!*



All prepaid orders must be received by Sunday at midnight for the week you are ordering.

Order online at [www.sarasotateemple.org](http://www.sarasotateemple.org)

Each meal comes pre-portioned, ready to heat and eat.  
Heating instructions included.

Curbside Pick Up Instructions: Fridays between 12:30 to 1:30 pm  
in the Temple Emanu-El parking lot near the entrance to our  
Religious School. 151 McIntosh Road, Sarasota 34232.

Please remain in your car / A volunteer will place the food in your car.

Soup will be in a microwaveable container. All other items will be packed in containers  
suitable for warming in the oven.

If you wish to microwave items not in a microwaveable container, transfer to a  
microwave-safe container before heating in microwave.

For more information or questions, contact Susan Meisel 585-797-4189 or  
[susan.meisel@gmail.com](mailto:susan.meisel@gmail.com)



## HOW WILL YOU ASSURE JEWISH TOMORROWS?

Whatever you cherish most  
about Jewish life ... learning,  
community, worship, caring  
for those in need or social  
justice, by leaving a legacy you  
ensure that the things you value  
are sustained for future  
generations.

**TO DISCUSS CREATING YOUR JEWISH  
LEGACY, CONTACT: Doris Ross**

[teeendowment@gmail.com](mailto:teeendowment@gmail.com)

941-320-4091



## MEMBER SPOTLIGHT

### Savannah Samberg

It is one thing to talk with our TEE members who can share stories from a lifetime of service and the events that molded the person they are today... often with years of reflection to understand how it happened. It is something else to speak with Savannah Samberg, a young adult, who already has her own stories and reflections on who she is and why and how she is working to shape her Jewish future, especially at TEE.

Savannah was raised in Bedford, N.Y. to parents who were Reform Jews, culturally and gastronomically while gathering family for the holidays. However, she was educated at the local Chabad in an Orthodox tradition because of her demand, at the age of nine, that she wanted a Bat Mitzvah. That determination has continued all through her life...to be true to herself and do what she needs to do to find out who she is. After her Bat Mitzvah, she and Chabad friends formed a Youth Group for discussions with the Orthodox Rabbi about Judaism which was an experience that had her wondering how she would practice as a Jew in her life. Although she had a growing curiosity, the need to maintain respect for her parents' and grandparents' Reform commitment and its emphasis on attending services for the High Holidays, of caring about others, participating in fundraising planning and generous giving, stressing family holiday gatherings, and giving back to the community was very important.

As a young girl, she began training for a future in professional dance which

continued as she went to University of S. Carolina. Her passion to succeed did not keep her, however, from trying to find Jewish connections in Columbia, S.C. where there were few. With some help from her teachers, she did, and continued to succeed in the dance program while also planning all department activities and working with the staff. All changed dramatically, however, after her Birthright experience in Israel before her junior year. This was the first time, since she was a child, that she took a break to do something other than dance. On the trip, she realized it had changed her and began to examine her inner thoughts about who she wanted to be and why when she returned home. She knew that dance was not going to be her life... that she wanted more. After living and teaching dance in Columbus, GA after graduation, she had no answers yet but



Savannah Samberg

truly found what she was looking for only when she arrived in Sarasota in 2018 to help her grandparents.

Her maternal grandparents were Southern Reform Jews who were the first of the family to come to Sarasota upon retirement. Savannah's love of Sarasota was borne of her frequent visits

here when she was young. She watched them on these visits volunteering and participating actively at Temple Sinai. After moving to Sarasota from Columbus, she chose to attend TEE and sit in the back for Shabbat services feeling a bit sad. She knew no one and was very occupied with caring for her grandparents...however, she didn't know that it is impossible to sneak into TEE without being embraced, member or not. Linda Weiss took Savannah under her wing and very quickly this young woman was embraced by Rabbis, Staff and Sisterhood, who encouraged her to join. The inclusion and the warmth of our Temple family told her she was where she needed to be and that she had found the place to continue her journey. Working as our Youth Group Leader, she fell into her identity as a Jewish woman. Her mission then became reaching out to young adults who know they want to be in Sarasota; but aren't quite sure how to find the community they can call their own. She began by personally contacting everyone on a list she secured, of young Jewish adults in the community. Everything fell into place. Those phone calls led to an online Jewish community including a Facebook page, plans for Shabbat services and Shabbat Happy Hours (where she met her future husband, Joe Ross), small social events, and Jewish holiday celebrations.

Her goal is to create a cohesive young adult Jewish community that will become affiliated as they move into their 30's. As part of her mission for TEE, she is working to grow our congregation with more young members including families to increase the diversity of our Temple. She has been a part of the Strategic Planning Group on a Task Force for evaluating and planning for Under 55 Members. She meets with Temple members and leaders to share her insights into what we can do to ensure that our future will be secured. Her passion and energy come through with every conversation.



She has a long list of what she hopes to do, and Joe is her willing partner. They want a Jewish home where all the teachings of Reform Judaism are shared. Her ultimate goal is to live according to those values that include her using the skills she has to help others who need it and put things together for those who cannot...her measure of success in a job will not be about promotions but more about helping others find success in their lives. The same measure applies to what she wants to do for Temple Emanu-El to keep our membership engaged.

Savannah has never refused to help when needed and when she comes up with an idea, she works 200% to make sure that it happens. It is her nature and her history. She says, "No matter how small or large the request, helping Temple gives me the fulfillment I was looking for." I believe we are in good hands, don't you? If our Spotlight is on her in her '20's, what will happen when she is in her '40's??? It's exciting to think about. Thank you, Savannah.

Interviewed by Phyllis Dreyfuss,  
Board Trustee

## *Sisterhood Presents A Virtual Tour of*



**Tuesday, February 16**

**at 1:30 pm**

**(log on by 1:25 pm)**

*A Zoom Event*

*Register by February 14*



Questions? Contact Judy Fine at judygf@gmail.com

Register at [www.sarasotateemple.org](http://www.sarasotateemple.org)

## **DR. MOSCOW & ASSOCIATES**

**Excellence in Chiropractic, Auto Injury,  
Medical & Wellness Care**

**(941) 954-3700**

**AUTO INJURIES  
CHIROPRACTIC CARE  
MDT PHYSICAL THERAPY  
PAIN MANAGEMENT**



Dr. Jeffrey Moscow

**DIGITAL X-RAY  
CLASS IV LASER THERAPY  
CUSTOM ORTHOTICS  
MASSAGE**

**AT THE NE CORNER OF  
BAHIA VISTA & TUTTLE  
1071 S. Tuttle Ave., Ste. 1  
Sarasota, FL 34237**

*"I've seen a few Chiropractors in  
the Sarasota area and I can  
unequivocally say that  
Dr. Moscow is the best."  
-Roger*

**WWW.DrJMoscov.com**

# Membership Bonding

Bonding has enhanced the membership experience for many Temple Emanu-El members during the Corona virus pandemic. The Membership Committee coordinated several Zoom gatherings in the previous twelve months for specific groups such as Temple Emanu-Elders, grandparents, new members, 25+ year members, prospective members, and temple

neighbors within zip codes. Temple members have formed new friendships because of these Zoom events.

It's fun to connect with other Temple Emanu-El members within your age group. It's fun for Temple Emanu-El grandparents to chat with other Temple Emanu-El grandparents. It's fun for new members to meet other new Temple Emanu-El members. It's fun for 25+ year members to reminisce with other 25+ year members. It's fun for prospective members to

learn about Temple Emanu-El while meeting other prospective members. It's fun to get to know the members living in your neighborhood. Temple Emanu-El members not only formed close bonds this year; they had fun during the process. Many meaningful and beautiful friendships were formed among Temple members and prospective members this year.

**Kim Sheintal,**  
Membership Co-Chair



*Over thirty smiling faces were present at the 34243 Neighborhood Gathering hosted by Carl and Judy Levy in November with special guest Rabbi Michael Shefrin*

## Hebrew Word of the Month: Kadima

Kadima is Hebrew for the word forward. It is best known as a centrist and liberal political party in Israel, originally founded by Ariel Sharon.

In the Bible, one of the directions on the compass is Kadima or east.

In addition to the political usage described above, the word has both a common usage and a militaristic usage. Thus, when we encourage someone to speed up an action, in Hebrew we say Kadima, "let's go".

As a motivation, when someone is engaged in a challenging task and one wants to motivate that person to do it, we say Kadima. If one wants to sit in the front row, as a direction, we say Kadima. And with respect to a future direction, for example, moving the clock forward, we say Kadima.

As military usage, to encourage a group of soldiers, one would say Kadima for "yes, you can". In addition, Kadima is used as a battle cry in advancing toward an enemy.

Here in the United States, Kadima is associated with the Conservative Movements' United Synagogue Youth. As a child I remember chanting "Kadima, kadima, kadima USY."

**Toby Halpern,**  
Member, Israel Committee  
& Past President





# JFSM Virtual

FEDERATION MAJOR EVENTS  
2020–2021

To see the full schedule  
of events and to register,  
visit  
***[jfedsrq.org/events](http://jfedsrq.org/events)***



The Jewish Federation  
OF SARASOTA-MANATEE

# TEE Starfish Initiative Volunteers Engage Students Through Integrated Hands-on Learning

As we reported in last month's *Temple Times*, our TEE Starfish volunteers continue to find ways to provide high-interest, creative, integrated learning experiences despite COVID-19 limitations. Iris Falk extends each of Wendy and Larry Barnet's *Dramatic Storytelling* five sessions through her *Literacy-Linked Art Experiences*. For example, following the Barnet's presentation of *The Gingerbread Boy*, Iris designed a linked project and made individual art materials kits for each student in all three Kindergarten classrooms, both those learning on campus and those learning remotely from home. Then via ZOOM, she led

the students in making their own Gingerbread Boy hand puppets. Even through their masks, you can see the pride in their puppet creations and their joy in receiving their very own copy of the book provided to each student by Akiva and Elaine Pipe!

Unfortunately, COVID restrictions prevent Drs. Stephen and Janet Hiller from conducting their annual lesson on refraction and symmetry, so the individual kaleidoscopes Stephen made for the students will be stored until next year. However, not to be sidelined completely, Stephen designed, built, donated, and installed



a large, weather-resistant kaleidoscope for all students throughout the school to experience in the school's Butterfly Garden, which was designed by Starfish volunteer Judy Levy and maintained by Starfish volunteer Judy Thibault, and Fred Thibault and Dr. Jill Halman with other UF/IFAS Extension Master Gardeners.

As you can tell from these examples and others we've shared in previous *Temple Times*, our Starfish volunteers remain undaunted and creative in their dedication to giving Wilkinson's Kindergarten students learning experiences to improve their literacy and STEAM skills--another example of our congregants' caring, skills, and dedication to Tikkun Olam.

**Dr. Tanice Knopp,  
TEE Starfish Initiative Chair**

## TEE STARFISH INITIATIVE





# ISRAELI COOKING DEMONSTRATION

FACILITATOR: EVIE SHEN-TAL

Tuesday, March 2 (11:00 am to 12:30 pm) and

Tuesday, March 9 (12:30 to 2:00 pm)



Zoom Events



All recipes in this series are suitable for vegan, gluten free, and nut free diets. Oil for the hummus topping is optional.

Session 1: March 2 at 11 am

Everything Hummus  
Learn how to make smooth Israeli hummus and toppings!

Session 2: March 9 at 12:30 pm

Stuffed Cabbage  
Try a new way to make an Israeli favorite!



Presented by the Israel Committee and Sisterhood.

RESERVATIONS REQUIRED:

Register online at [www.sarasotateemple.org](http://www.sarasotateemple.org)

GET TO KNOW YOUR TEMPLE NEIGHBORS!



# "CHAI"

## NEIGHBOR

ZIP CODE

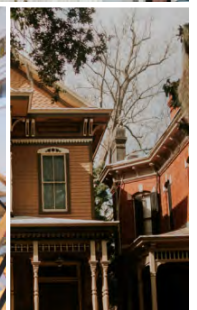
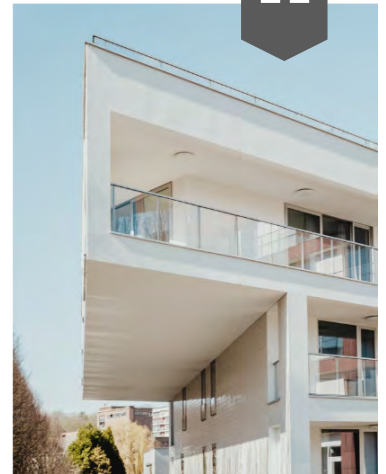
ZOOM

GATHERINGS

Would you like to host a Zoom gathering for members in your zip code? It is easy and fun!

IF INTERESTED:

contact Kim Sheintal at [klapshein@aol.com](mailto:klapshein@aol.com)



Rabbis Glickman and Shefrin make these gatherings special!

Adult Education Presents

Rabbi Susan Marks

Significant Financial Contributions of Ancient Jewish Women

Wednesday, February 24  
at 10:30 am



We know of contributions made by Jewish Women in our centuries. Their counterparts do not appear in the first readings of the Talmud, but we can glimpse them if we look closely, explore contemporaneous inscriptions, and read against the grain. Together we will examine a selection of this ancient evidence and consider what it reveals.

**Rabbi Susan Marks** is a professor of Judaic Studies and Klingenstein Chair in the Division of Humanities of New College of Florida. She is a published scholar and a presenter on Jewish history, culture, rituals and women in ancient times.

Register online at [www.sarasotateemple.org](http://www.sarasotateemple.org)

Questions? Contact Ellen Zipin at [ezipin2@comcast.net](mailto:ezipin2@comcast.net)



A ZOOM EVENT



Thursday  
March 4 at 10:30 am  
Featuring  
Sonia Fuentes

Sonia Fuentes, Feminist Activist  
and Co-founder of the National Organization for Women

Join us for an interview with Sonia Pressman Fuentes, a feminist activist, international advocate and legal expert on women's rights. She served as an attorney with the federal Department of Justice, National Labor Relations Board, Equal Opportunity Commission, and the Department of Housing and Urban Development. Ms. Fuentes has lectured extensively in this country and abroad on women's rights and has written numerous articles on that subject in law reviews and other publications both in the U.S. and abroad. She is the recipient of many honors and awards for her trailblazing work on women's rights.



A Virtual Event!  
Register online at  
[sarasotateemple.org](http://sarasotateemple.org)



## Sisterhood Gift Shop

### PRE-PASSOVER SALE!

All Passover items 20% off PLUS purchase any Pass-over item by Feb. 28th and get 50% OFF our 200-page Sisterhood Cookbook (only \$9). Any Seder plate, Matzah holders, Charoset dishes, Matzah and Afikomen covers, plus children's items, etc. all at 20% off.

And new... beautiful Judaica Seder plates by artist **Gary Rosenthal** for the home in copper, brass and fused glass. Pictured on the top shelf are the Combo Seder Plate and the Burning Bush Seder Plate. See our entire selection of Passover items by appointment (Masks are a Must) with Alice Cotman.

100% of the proceeds go to Sisterhood for the Religious School. The Gift Shop is open by appointment with Alice Cotman (call 941-359-6451). 20% off sale ends February 28<sup>th</sup>.

**Alice Cotman,**  
Sisterhood Gift Shop  
Buyer/Manager



## Social Action News

The Social Action Committee thanks the Congregation for its generosity in helping to make the *Warm Weather Clothing Drive* such a success. Turning Points is very grateful for the donations. Todah Rabah.

We are pleased to again co-sponsor Martin Luther King Day tribute with Brotherhood and Sisterhood on January 17, 2021. Many thanks to Don Malawsky for coordinating this amazing event and to Barbara Peltz for representing SAC on the planning committee.

The Social Action Committee invites you to join us during the month of February to *Spread the Love* and support SPARCC (Safe Place and Rape Crisis Center), which offers a 24/7 shelter, 365 days a year, along with support services, for women and children in Sarasota and surrounding counties. Clientele are victims of domestic and sexual violence. A collection box will be outside the main office during the month of February for the following items:

- New or used cell phones with chargers
- Spray disinfectants and cleaners
- Anti-bacterial wipes
- Sponges & dish cloths
- Laundry & dish detergent
- Paper plates & cups
- Gift Cards-Walmart, Target & Publix

Thanks to Lita Katzer for coordinating this effort on behalf of SAC. If you are interested in joining the Social Action Committee or want more information about any of our activities, please contact me at [srosenbaum28@gmail.com](mailto:srosenbaum28@gmail.com).

**Susan Rosenbaum,**  
Chair, Social Action Committee





Sisterhood Celebrates Purim

# Mishloach Manot

**We're delighted to announce Sisterhood's plan to distribute Purim gift bags.**

**We invite you to pick up your bag. Here's how:**

On Friday, February 26, between 1:30 and 2:30 pm drive up to our religious school entrance to receive your Mishloach Manot bag. Each bag will be filled with items that you will want to have including **HOMEMADE HAMANTASCHEN**, other treats and goodies, a mask, grogger and a sign that has **Boo** on one side and **Yay** on the other side to be used during the reading of the Megillah along with the blessings.

NOTE: If you are picking up a Shabbat-To-Go dinner, you will get your bag at the usual dinner pick-up time between 12:30 and 1:30 pm.

Would you like to sponsor bags for our temple congregation? Make a donation at one of these levels or name your own amount.

Bronze sponsor	\$25
Silver sponsor	\$50
Gold sponsor	\$75
Platinum sponsor	\$125
Other donation	

Make your payment online at [www.sarasotatemple.org](http://www.sarasotatemple.org).

**SUBMISSION DEADLINE IS Tuesday, February 23, 2021**

**All proceeds support the Temple Emanu-El Religious School.**

**Bags will be delivered to Aviva, JFCS, and homebound members unable to drive to temple.  
Questions? Contact Susan Simon at [spls1117@gmail.com](mailto:spls1117@gmail.com) or 914-393-5745**

## Mitzvah Knitting Group Continues to Bring Joy

Although the pandemic has paused regular gatherings of Temple Emanu-El's wonderful Mitzvah Knitting Group, their handiwork continues to bring joy! A surplus of beautiful baby blankets, knitted with equal measures of expertise and love, enables us to gift a special blanket to every new baby born into our Temple family. The most recent recipient of a Mitzvah Knitting Group blanket is baby Shai Benderson, a third-generation member of Temple Emanu-El, along with his parents, Rachel and Evan, and his grandparents, Lori and Randy. We look forward to more Mitzvah Knitting Group gatherings in the post-vaccine days, and to making more simchas special with the knitzvah sisters' magnificent handiwork and spirit!



*Shai Benderson in his new blanket, created by Temple Emanu-El's Mitzvah Knitting Group*



*Shai's sister Shosh uses his new blanket to care for her doll*

## HOW CAN WE HELP THE TEMPLE WITHOUT CHANGING ANYTHING WE DO?

[smile.amazon.com](https://smile.amazon.com)

That is how!

**amazon**smile  
You shop. Amazon gives.

*Each time we purchase ANYTHING from Amazon once you have signed up for the SMILE PROGRAM, .05% of that purchase goes directly to Temple Emanuel El.*

*As of December we have received \$800 from Amazon*

*This could be so much more as we are sure many of our members use Amazon and are Prime members. Please give this some consideration. Again, it has no negative effect on the price you pay, and it helps Temple Emanu-El.*



## Adult Education Update:

The Adult Education Committee is pleased to continue providing educational and informative programs for our community via ZOOM. As always we thank you for your participation.

### Just for the Health of it Update

A video of the ZOOM presentation by Dr. Stephen Hiller on the benefits of a Plan- Based Whole Foods Lifestyle for our health and the health of our planet which took place on December 8, 2020 is available to the TEE community. To request information, please email [Adultedtee@gmail.com](mailto:Adultedtee@gmail.com).

### Upcoming Courses & Events



Please mark your calendars and register online on the temple website.

**Israeli Innovation:** The Israel Committee and Adult Education are pleased to co-sponsor speaker Alex Parne, a graduate of the famed Technion Institute of Technology, retired Israeli Airforce officer, and Israeli engineer and international technology and innovation expert. He will share his experiences and observations regarding the Israeli high-tech industry and start-ups past, present and future.

**DATE:** February 11, 7:00 pm

**Significant Financial Contributions of Ancient Jewish Women:** "We know of contributions made by Jewish women in our centuries. Their counterparts do not appear in the first readings of Talmud, but we can glimpse them if we look closely, explore contemporaneous inscriptions, and read against the grain. Together we will examine a selection of this ancient evidence and consider what it reveals." - Dr. Rabbi Susan Marks is a Professor and Klingenstein Chair of Judaic Studies at New College of Florida, Division of Humanities.

**DATE:** Join Dr. Rabbi Marks on February 24th, 10:30 am

#### OUR MEMBERSHIP EXTENDS DEEPEST SYMPATHY

Helene Abramowitz, Joanne Haiby, Sue Hoffman, Lorrie Pead, Walt Ulin and their families on the death of a loved one so precious and dear.

Our membership mourns the loss of Stanley Ruby.

May God's strength and our support  
bring comfort to one and all.



*Sonia Fuentes*

**Sonia Fuentes, Feminist Activist and Co-founder of the National Organization for Women:** Join us for an interview with Sonia Pressman Fuentes a feminist activist, international advocate, and legal expert on women's rights. Ms. Fuentes served as an attorney with the federal Dept. of Justice, National Labor Relations Board, Equal Opportunity Commission and the Dept. of Housing and Urban Development.

**DATE:** March 4, 2021 at 10:30 am

**Hebrew Conversation - Beginners:** Join instructor Evie Shen-Tal and communicate with her and with the rest of the class about everyday topics in Hebrew. Knowledge of written Hebrew is not required.

**FEE:** 8 one-hour classes \$50/members, \$60/non-members

**DATE:** Starting March 4th, 7:00 pm

**Hebrew Conversation - Intermediate:** Students who have completed Hebrew Conversation for Beginners are ready for this intermediate level class where they will continue to build vocabulary and communication skills.

**FEE:** 8 one-hour classes \$50/members, \$60/non-members

**DATE:** Thursdays, 9:15 am

**Hebrew Conversation - Advanced:** Students with some background in speaking, reading, and writing Hebrew build on their knowledge of grammar and vocabulary through engaging classroom interactions with instructor Evie Shen-Tal and classmates.

**FEE:** 8 one-hour classes \$50/members, \$60/non-members

**DATE:** Tuesdays, 9:15 am

If you would like more information on these programs, please contact Co-Chairs Ellen Zipin, or Dr. Janet Hiller at [Adultedtee@gmail.com](mailto:Adultedtee@gmail.com).

# Music



# of Israel

Thursday, March 18 at 7 pm

Come join the Israel Committee for our Israeli Music Program. We will watch a compilation of music videos by BAT ELLA, a very talented popular singer, and NAOMI SHEMER, a popular singer from many years ago whose music is still loved today. One of the songs by Naomi Shemer, "Al Koh Eleh" is sung by Koolulam with 1,000 Israelis singing together for the first time. It's an extraordinarily uplifting experience as are the other songs. This is an opportunity for us to come together via Zoom to listen to inspiring music from Israel. These artists and their music represent the best of Israeli culture.

English translations will be provided.



BAT ELLA



NAOMI SHEMER

Register for this ZOOM event at  
[www.sarasotatemple.org](http://www.sarasotatemple.org)

# SUNCOAST FLORIST

1227 Beneva Rd. Sarasota, FL 34232

Corner of Bahia Vista & Beneva

(941)365-6407

SUNCOASTFLORISTRY.COM

"Your neighborhood florist since 1980"

# We Serve All Families

*In this time of need, know who to call.*

Our firms will serve your family with all precautions,  
CDC guidelines, and compassionate care.

*Dignity Memorial®*  
**Robert Toale & Sons**

Dignity®

LIFE WELL CELEBRATED®

RTSFunerals.com

Not affiliated with Toale Brothers Funeral Home or Toale Brothers Inc.



Susie, Jason, Jeff, Hannah, Robert and Debbie

If you or a family you know would like to discuss  
options for services, cremation, Life Story Celebrations,  
or returning to their home state up north,  
we have answers available.

Announcing the development of a NEW FACILITY IN LAKEWOOD RANCH located near the corner of Lakewood Ranch Blvd. and 44th Ave.



PALMS MEMORIAL PARK

170 Honore Avenue, Sarasota, FL 34232  
941.371.4962 • Fax 941.295.7009



WIEGAND CHAPEL

7454 South Tamiami Trail, Sarasota, FL 34231  
941.921.5755 • Fax 941.923.0113



MANASOTA MEMORIAL PARK

1221 53rd Avenue East, Bradenton, FL 34203  
941.755.2688 • Fax 941.201.1640



Gerry Ronkin  
Jewish Liaison



# Outdoor Family Programs Bring Joyful Jewish Learning to Temple Emanu-El



When the coronavirus pandemic became a reality in the spring of 2020, Temple Emanu-El's Religious School (TEERS) quickly transferred all classes and children's programs to virtual platforms. This change allowed TEERS to bring Judaism to the home, and the response from families and students was deeply affirming. It was soon realized, however, that families were eager to have a physical connection to Temple Emanu-El and to each other. After gaining more understanding of the coronavirus, and with the guidance of Temple Emanu-El's Covid-19 Committee on safety protocols, TEERS began to hold monthly events outdoors. These wonderful, successful events continued in December, and more are planned for February.

Sunday, December 6, TEERS' kindergarten through third grade students and their parents gathered outdoors for an energetic and fun-filled program. They participated in an Aleph-Bet scavenger hunt, did Aleph-Bet yoga, and received goodie bags for their efforts! Both children and parents learned, had fun, and – best of all – spent the morning together safely.

Chanukah was also celebrated with a spirited and uplifting outdoor celebration. On December 13, TEERS families

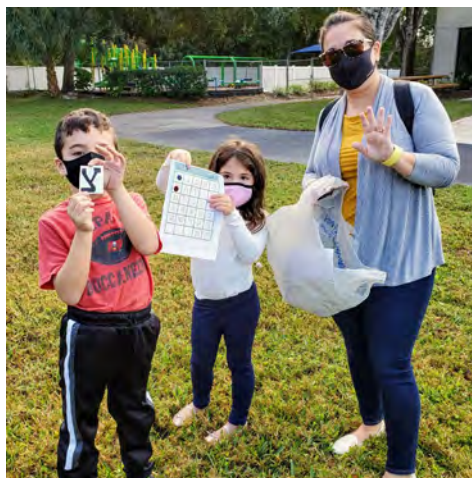
enjoyed Chagigat Chanukah by creating Chanukah cards for Jewish soldiers, participating in a sing-along, meeting Judah Maccabee, making crafts, and enjoying a variety of Chanukah goodies. Tot Shabbat families were also invited and enjoyed this fun and meaningful event!

TEERS' outdoors programs have been received with enthusiasm and gratitude. As one TEERS parent stated after an event: "I cannot thank you enough for your efforts today. It was so clear how much love and time you all put into the day. We are SO appreciative and feel so loved even during this crazy time." ;

We are very excited to announce two special outdoor programs this month: Sunday, February 21, TEERS will celebrate Purim with an outdoor, safe and socially-distanced Purim carnival – and Saturday evening, February 27, we will hold our much-anticipated Drive-In Movie Night, which will begin with a beautiful havdalah service and will feature safe concession sales and other fun surprises. Please watch your inbox, call 378-5567, or email [teers@sarasotateemple.org](mailto:teers@sarasotateemple.org), for more details and registration information.

TEERS looks forward to continuing to educate and inspire our children and families joyfully and safely!

**Sabrina Silverberg,**  
**MARE, Director of Education**



*The Wolffs display their Aleph-Bet scavenger hunt materials*

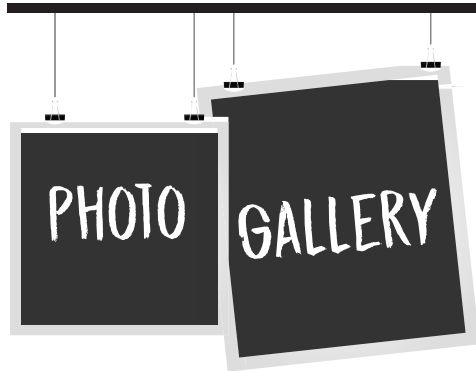


*Woodrow and Rose Bryant show off their colorful Happy Chanukah sign*



*Josie Beck enjoyed coloring in a Happy Chanukah decoration*

# 



The Temple Emanu-El family ushered out 2020 and rang in 2021 with spirit, laughter, camaraderie, gratitude, and hope with a New Year's Eve toast on Thursday evening, December 31! Over 80 temple members gathered via Zoom to enjoy a selection of New Years-themed videos curated by Rabbi Michael Shefrin, breakout rooms and small-group discussions with old and new friends. There was a virtual toast –



Our rabbis and members welcomed 2021 together!

complete with the recitation of She-hecheyanu and calls of “L’chaim! - as well as a live-fireworks show from the driveway of Rabbis Brenner and Elaine Glickman. It was a festive, warm, and lively celebration, and the perfect way to be together as we marked the beginning of a new year.

May 2021 be filled with good health, happiness, joy, and vaccination for all!



*Greetings From*  
**AVIVA, SARASOTA**  
The Spirit of Sarasota, Brought Home

At Aviva, our residents do more than call our community home. They live here, with purpose and meaning at every turn. Embracing the beauty of Sarasota and our 27-acre campus. Curating a thriving arts and cultural scene. And ensuring your peace of mind with loving staff in a safe and secure environment—upholding the highest COVID safety standards. [Visit us at AvivaSeniorLife.org](https://www.avivaseniorlife.org)



1951 N. Honore Ave. | Sarasota, FL 34235  
941.377.0781 | [AvivaSeniorLife.org](https://www.avivaseniorlife.org)

Independent Living | Assisted Living | Memory Care | Skilled Nursing & Rehabilitation



# “Reimagining Hanukkah”



Even in the darkness of a pandemic, Temple Emanuel-El's Hanukkah lights shone brightly and joyfully! The holiday began with a wonderful drive-in celebration as hundreds of members received Hanukkah gift bags lovingly planned and assembled by Ethel Gross, with Marlies Gluck, Paula Hayden, and Joanne Maguire. Bags were donated to Aviva residents as well. Our rabbis then led the Hanukkah blessings and kindled the first lights on the giant tiki torch menorah custom-designed and crafted by our own Steve Weinberger. (If these photos of it look familiar, that's probably because the menorah was a media sensation and featured in every local paper and newscast!)

The intermediate nights of Hanukkah were celebrated via Zoom and livestream, with temple committees and leaders taking turns beautifully leading the blessings and candle-lightings for our temple family – and we all came back together on the eighth night of Hanukkah to light the menorah in another socially-distanced and happy gathering!



*Past President Michael Richker showed his Hanukkah spirit*



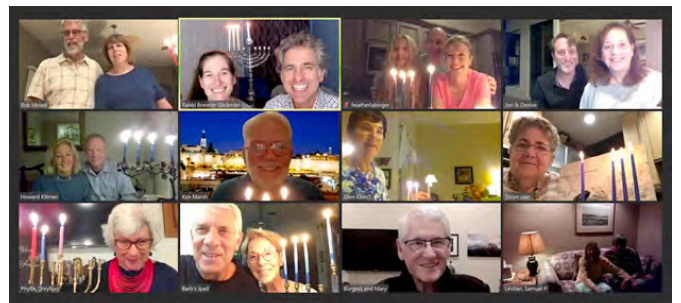
*Rabbi Shefrin and SNN anchor Hallie Peilet got into the Hanukkah spirit*



*Rabbi Glickman and Rabbi Shefrin prepared to light the menorah on the first night of Hanukkah*



*The amazing tiki torch menorah built by Steve Weinberger*



*TEE Board members beautifully led the Hanukkah blessings*



*Sisterhood leaders led a wonderful menorah lighting*



## Two Special Tot Shabbats, with More to Come!



*The Wagner family enjoyed “meeting” Hanukkah hero Judah Maccabee at Drive-In Tot Shabbat*



*Susan Schwaid Early Learning Center teacher “Ms. Debbie” Kaufman beautifully shared a story during the first Tot Shabbat of 2021*

Temple Emanu-El’s youngest Jewish and interfaith families concluded 2020 and entered 2021 with special Tot Shabbat celebrations, and we look forward to more in the year ahead!

On Saturday morning, December 19, children and parents enjoyed the latest installment of our signature Drive-In Tot Shabbat program! Expertly hosted by Shauna Wagner, this Tot Shabbat centered around the theme “Reliving Hanukkah” and enabled families to celebrate the Hanukkah spirit together. Hanukkah-themed gift bags, snacks, crafts, songs, and movement set the mood, and were highlighted by a visit from Hanukkah hero Judah Maccabee – a.k.a. our own Joe Ross. Families also received birthday blessings and participated in Shabbat songs and prayers with Rabbi Michael Shefrin, then enjoyed socially-distant playtime on our wonderful playground. What a special morning, and what a great way to close out 2020!

Families also celebrated the first Shabbat of 2021 together with a wonderful livestream/Facebook Live Tot Shabbat on Saturday, January 2! This was a morning of terrific and meaningful entertainment facilitated by special and beloved guests including Susan Schwaid Early Learning Center teacher “Ms. Debbie” Kaufman, who shared a story with an essential message as well as inspiring and comforting words; Starfish Initiative performer Wendy Barnet, whose costumed and wonderfully-acted storytelling were simply delightful; Director of Education Morah Sabrina Silverberg, who taught Hebrew with engaging songs, words, and an always-contagious love for Judaism and learning; and Shayna Shefrin, who led attendees in fun, healthy movement that brought both stretches and smiles. We are grateful to all of our participants, and to Rabbi Shefrin, Rabbi Elaine Rose Glickman, and Facilities Manager Jesse Bauer for coordinating the morning!

This month’s Drive-In Tot Shabbat will be held on Saturday, February 13, at 10 a.m. – and, as you might guess from the date, our theme will be love, affection, and friendship! We look forward to another wonderful morning together – please watch your inbox for all the details, or contact Rabbi Elaine for more information.

Tot Shabbat is always free of charge, thanks to an anonymous angel donor, and is designed especially for families with children up to age 6. New friends are always warmly welcome. Shabbat Shalom!



*Jacob Bunin explored the Hanukkah-themed goody bag he received at*





**M. DAVID SHAPIRO**

Board Certified Civil  
Trial Attorney

Florida Supreme Court  
Certified Mediator

DShapiro@GetMeJustice.com



# SHAPIRO | DELGADO INJURY LAW

*Helping the Injured Since 1990*

**SARASOTA**

308 Cocoanut Avenue, Sarasota, FL 34236  
toll free 1.800.954.4014 | office 941.954.4000 | fax 941.955.3632

**BRADENTON**

5283 Office Park Boulevard, Bradenton, FL 34203  
office 941.751.0555

## Mankowitz Chiropractic & Massage

Pain-Free, Gentle Technique which is Safe & Effective for All Ages.

92.3% of Our Patients are Extremely Satisfied with Our Services.

**COMPLIMENTARY CONSULTATIONS**

Medicare and over 100 Insurances Accepted

**Auto Accidents**

**Arm/Shoulder**

**Arthritis**

**Back Pain**

**Headaches**

**Hip/Leg Pain**

**Muscle Spasms**

**Neck Pain**

**Painful Joints**

**Sciatica**

**& Many Other**

**Conditions**



**Dr. David B. Mankowitz, D.C., P.A.**

Board Certified Chiropractic Physician with Over 30 Years Experience

Diplomate National Board of Chiropractic Examiners

**941-922-4444**

4970 Fruitville Road Sarasota, FL 34232

[www.mankowitzchiropractic.com](http://www.mankowitzchiropractic.com)



Let's  
Celebrate

## **FEBRUARY ANNIVERSARIES**

- 1 Jason & Faith Lipton
- 6 Jonathan & Kimberly Sheintal
- 9 Sol & Barbara Cohn
- 14 Mark & Barbara Peltz
- 14 Marc & Amy Greene
- 15 Jay & Lynn Sacks
- 16 Beth & Jay Vandroff
- 17 Juliette & Andrew Grossman
- 19 Bob & Susan Meisel
- 26 Stanley & Sandra Krawetz
- 28 Robert & Sylvia Kupferman

## **FEBRUARY BIRTHDAYS**

- |                        |                          |                           |
|------------------------|--------------------------|---------------------------|
| 1 Judy Glickman Lauder | 11 Alice Burd            | 20 Lisa Carter            |
| 1 Isaiah Cohen         | 11 Jamie Warren          | 21 Barby Comins           |
| 1 Dr. Helen Fagin      | 11 Benjamin Shereff      | 21 Shayna Luchte          |
| 1 Laurene Ross         | 12 Gwen Murphy           | 21 Xavier Koffman         |
| 1 Paula Scheiner       | 12 Gerald Seigel         | 21 Jacob Feldman          |
| 2 Pam Brown            | 12 Hayden Stroud         | 21 Paul Wax               |
| 3 Bruce Udell          | 13 Ava Rupp              | 21 Dr. Susan Beck         |
| 3 Roberta Leibowitz    | 13 Shari Kaplan Paler    | 21 Dr. Tanice Knopp       |
| 4 Muriel M. Stone      | 13 Jonathan Geffre       | 21 Dr. Bernard Friedland  |
| 4 Megan Heller         | 14 Jerry Blumengarten    | 22 Louise Werbelow        |
| 5 Isaac Azerad         | 14 Marvin Cohen          | 22 Andrew Bunin           |
| 5 Nancy Bossov         | 14 Gavan Anderson        | 22 Sandra Zimmel          |
| 5 Dr. Mark Lewis       | 14 Taylor McCart         | 22 Scott Levine           |
| 5 Dr. Jason Wagner     | 15 Rabbi Edgar Weinsberg | 22 Adrienne Hutt          |
| 5 Gavin Schoenfeld     | 15 Barry Furman          | 22 Oliver Daniel          |
| 6 Lynne Spencer        | 15 Heather Pollack-Rupp  | 22 Norah Damroth          |
| 6 Paul Hamburg         | 16 Sophia LeRoy          | 22 Courtney Rosenthal     |
| 6 Jordan Heller        | 16 Jordan Shifrin        | 22 Arthur Timmins         |
| 7 John Gudelsky        | 16 Joel Eisenberg        | 22 Ellis Lasberg          |
| 7 Eli Hanan            | 16 Judy Sauertieg        | 23 Arthur Skop            |
| 7 Alan Sachs           | 16 Richard Weissfeld     | 23 Diana Goodman          |
| 7 Meredith Ernst       | 17 Doris Ross            | 23 Norah Jawitz           |
| 7 Michael Katzer       | 17 Dr. Martin Kline      | 23 Howard Berman          |
| 7 Rich Fine            | 17 Helene Davis          | 24 Theodore Baker         |
| 7 Michelle Pearson     | 17 Marc Levine           | 25 Kira Herman            |
| 8 Noe Ruth Hakim       | 17 Bruce Gibbs           | 26 Lucy Aker              |
| 8 Lanie Fineman        | 17 Margery Shurberg      | 26 Janis Reader Forgotson |
| 8 Barbara Cohn         | 18 Laura Kramer          | 27 Arthur Bernberg        |
| 9 Naomi Yamada         | 18 Carter Hankin         | 27 Anne Bishop            |
| 9 Natalie Chait        | 18 Lillian Hays          | 27 Brooke Feldman         |
| 9 Wes Rosenthal        | 18 David Meese           | 27 Kathy Docks            |
| 10 Bob Chapman         | 19 Josie Margo Beck      | 28 Arthur Marx            |
| 10 Gregg Pead          | 19 Brian Wides           | 28 Eloise Friedman        |
| 10 Eliza Lipton        | 19 Geraldine Newman      | 28 Susan Rosenbaum        |
| 11 Eliana Lesnick      | 19 Cindy Aminoff         |                           |





## CONTRIBUTIONS

### Adult Education Fund

#### In Appreciation of:

Bruce Black's memoir writing class  
*by Adrienne Hutt; Judy Thibault*

#### In Memory of:

Harry Schwartz, beloved father of Sue Hoffman  
*by Drs. Stephen & Janet Hiller*

### Brotherhood Fund

#### In Appreciation of:

The Los Trabas Concert  
*by Dr. Nigel & Geri Newman*

### Covid Fund

#### In Appreciation of:

Our wonderful temple  
*by Andy & Karen Hertzfeld*

#### In Honor of:

The marriage of Rebecca Arnold to Alex Saenz  
*by Beverly Austgen & Norman Olshansky*

#### In Memory of:

Ed Farber, beloved of the Farber Family  
*by Lynn & Jay Sacks*

Gerald Luff, beloved of father of Helane Abramowitz  
*by Marion & Jay Richter*

### Endowment Fund

#### In Honor of:

Doris Ross for the tremendous efforts to make the Endowment Fund grow  
*by Phyllis Dreyfuss*

#### In Memory of:

Jerry Camens, beloved father of Dennie Camens  
*by Wendy & Conrad Wicks*

#### Yahrzeit In Memory of:

Glenn David Ross, beloved son  
*by Irving B. Ross*

Rose Schwartz, beloved mother-in-law  
*by Paul W. Klein*

Sydna Hyman, beloved sister  
*by Irving B. Ross*

### Eunice Cohen Religious School Scholarship Fund

#### In Appreciation of:

Temple Emanu-El  
*by Linda Cohn*

### General Fund

#### In Appreciation of:

All the online events  
*by Roberta Sheffer*

Temple Emanu-El  
*by Carol Westerman; Sylvia Haftel*

Temple Emanu-El & our wonderful rabbis  
*by Daryl Bayer*

#### In Honor of:

Beverly & Jon Horwitz's 50th anniversary  
*by Dana & Elliott Corn*

Rich & Rebecca Bergman's anniversary  
*by Lori & Alan Ross*

Rivka & Chris Drago  
*by Terry Gedan*

#### In Memory of:

Annie Lowenthal  
*by Evelyn Koshner*

Gerald Luff, beloved of father of Helane Abramowitz  
*by Sheri Ross & Charles Glick; Jane Plitt & Jim Bruen; Robin & David Shapiro*

Jerry Camens, beloved father  
*by Denise Camens*

Renee Gold  
*by Ernie & Ardis Freedman; Dr. Martin Max; Barbara Lifsec*

Shirley Panaia-Baker, beloved sister of Betty Perlmutter  
*by Harry & Gayle Yaverbaum*

Suri Nisker, beloved daughter-in-law  
*by Harry & Gayle Yaverbaum*

Yahrzeit In Memory of: Adele Bernstein Chase, beloved mother  
*by Stephen B. Chase*

Alyce Rabin, beloved mother  
*by Lori Ross*

Anthony, my heart donor  
*by Gary Rosenbaum*

Ari Weiss, beloved grandson  
*by Lillian "Bibby" Weiss*

Augusta Lasberg, beloved mother  
*by Ellis & Bernice Lasberg*

Beatrice Endick, beloved sister  
*by Phyllis Loewengart*

Bernard Isaac Abramowitz, beloved father of Bernice Shor & Bruce Abramowitz  
*by Bernice Shor*

Bertha Feldman D'Ambrosio, beloved mother  
*by Pamela & John D'Ambrosio*

Bertha Lafferman, beloved mother  
*by David & Mollie Lafferman*

Bertram Sparr, beloved friend  
*by Esther Goldberg*

Bronka Lifszec, beloved mother-in-law  
*by Barbara Lifsec*

Catherine "Kitty" Muhlfelder, beloved mother  
*by Marlies Gluck*

Cele Spivak, beloved mother  
*by Mr. & Mrs. Richard Sager*

Celia Yaverbaum, beloved mother  
*by Harry Yaverbaum*

Charles Shapiro, beloved father  
*by Carol Siegler*

Diane Orenberg Fernandez, beloved niece  
*by Alan R. Orenberg*

Dorothy Samdperil, beloved mother  
*by Alan & Sandra Samdperil*

Dr. Louis Jacobs, beloved father  
*by Harry & Gayle Yaverbaum*

Edwin Shapiro, beloved father  
*by Robin & David Shapiro*

Elaine Simons, beloved sister  
*by Harry Yaverbaum*

Elizabeth Gordon, beloved mother-in-law  
*by Dr. Martin Max*

Erwin Lenz, beloved father  
*by Judy & Elliott Sauertieg*

Fannie Chinn, beloved aunt  
*by Eileen P. Bowman*

Gerald Albert Denver, beloved father  
*by Michael & Sandra Pass*

Gerald Levitt, beloved father  
*by Nina Levitt*

Hannah Weiss, beloved granddaughter  
*by Lillian "Bibby" Weiss*

Harry E. Nyman, beloved father  
*by Brenda Berkeley*

Harvey Kemp, beloved father  
*by Bill & Gloria Weed*

Helen Newman, beloved mother  
*by Geri & Nigel Newman*

Henrietta Whitehorn Levin, beloved grandmother  
*by Rochelle Harned*

Herbert Rosenthal, beloved father  
*by Lori & Alan Ross*

Jack Yonker, beloved father  
*by Richard A. Yonker*

Jack Yonker, beloved husband  
*by Debbie Yonker*

Janice Gotch, beloved mother  
*by Robin & David Shapiro*

Jean Levitt, beloved mother  
*by Nina Levitt*

Jean Morris, beloved mother  
*by Dr. Alvan & Suzy Morris*

Joey Schlosberg, beloved husband  
*by Kim Schlosberg*

Joseph Behar, beloved father  
*by Vic Behar*

Joy Sparr, beloved friend  
*by Esther Goldberg*

Lenny Greenberg, beloved uncle  
*by Nina Levitt*

Leslie Weiss, beloved daughter-in-law  
*by Lillian "Bibby" Weiss*

Louise Ellis, beloved mother  
*by Judy Louise Ellis Glickman Lauder*

Marian Wicks, beloved mother  
*by Conrad A. Wicks*

Martin Falk, beloved father  
*by Mike & Harriette Krasnoff*

Marvin Welsch, beloved brother  
*by Judy Shapiro*

Mauri Kemp, beloved uncle  
*by Bill & Gloria Weed*

Max Kurt Muhlfelder, beloved father  
*by Marlies Gluck*

Milton Shaffe, beloved father  
*by Susan Kilman*

Minnie Levine, beloved mother  
*by Phyllis Loewengart*

Mitchell Weiss, beloved son  
*by Lillian "Bibby" Weiss*

Moris Brown, beloved grandfather  
*by Ernie & Ardis Freedman*

Morton Schapiro, beloved father  
*by Howard & Sandy Schapiro*

Nettie Petzolt, beloved mother  
*by Joy Scherer*

Peter Bisgeier, beloved father  
*by Risa Marlen*

Phyllis Marsh, beloved mother  
*by Ken Marsh*

Raymond Hockenberry,  
beloved father  
*by Nina Levitt & John Hockenberry*

Rebecca Glick, beloved  
grandmother  
*by Eileen P. Bowman*

Ronald Stanley Gluck,  
beloved brother-in-law  
*by Marlies Gluck*

Rosalyn Joy Sparr, beloved sister  
*by Alan R. Orenberg*

Ruth Goldstein, beloved mother  
*by Judith Koziol*

Samuel George Upton, beloved  
father-in-law  
*by Marlies Gluck*

Samuel Yaverbaum, beloved father  
*by Harry Yaverbaum*

Seymour Eisenberg, beloved father  
*by Joel Eisenberg*

Sidney Omenke, beloved father  
*by Meryl Taback*

Sophie Krasnoff, beloved mother  
*by Mike & Harriette Krasnoff*

Stephanie Morris,  
beloved daughter  
*by Dr. Alvan & Suzy Morris*

Sylvia Estrin, beloved mother  
*by Bonita Ganot*

William Arnold,  
beloved son-in-law  
*by Joe & Ann Graff*

William Schulman, beloved father  
*by Lenore Treiman*

## Kaplan Scholar-In-Residence Fund

### In Honor of:

Rookie & Jordan Shifrin's 50th  
wedding anniversary  
*by Doug Popp & Sharon Linder*

## Lewis Library Fund

### In Appreciation of:

The Lewis Library &  
Temple Emanu-El  
*by Jay Haire*

## Opher Library Fund

### In Memory of:

Robert Ulin, beloved  
brother of Walt Ulin  
*by Alan R. Orenberg & Marilyn L. Graves*

## Prayer Book Fund

### In Memory of:

Charles Schacter, beloved  
brother-in-law of Joanne Haiby  
*by Mona Salomon*

## Rabbi Glickman's Discretionary Fund

### In Appreciation of:

Rabbi Brenner Glickman  
during the mourning for my  
father, Gerald Luff  
*by Helane Abramowitz*

Rabbi Brenner Glickman  
*by Dr. Terry McDonald;  
Dr. Randee Gevertz*

Shabbat services  
*by Robin & David Shapiro*

### In Honor of:

Our 13th anniversary  
*by Robert & Rita Familant*

The five-year anniversary  
of my heart transplant  
*by Gary Rosenbaum*

### In Memory of:

Gerald Luff, beloved father  
of Helane Abramowitz  
*by Bernice Shor & Irwin Feinberg*

Ronnie Patlen Lira, beloved sister  
*by Beth & Steve Steiner*

### Yahrzeit In Memory of:

Fannie Lang Lowenstein,  
beloved mother  
*by Genie & Les Aberson*

## Rabbi Shefrin's Discretionary Fund

### In Appreciation of:

Rabbi Michael Shefrin  
*by Dr. Randee Gevertz*

Rabbi Shefrin for unveiling  
*by Phyllis Bertenthal*

The five-year anniversary  
of my heart transplant  
*by Gary Rosenbaum*

Refuah Shleimah  
Linda Meisel  
*by Robert Familant*

## Religious School Fund

### In Memory of:

Priscilla Molnar, beloved  
mother of Suzanne Pardo  
*by Judy & Elliott Sauertieg*

### Yahrzeit In Memory of:

Gertrude Guberman,  
beloved mother  
*by Lynne Pewterbaugh*

## Starfish Fund

### In Honor of:

Tanice Knopp for her leadership  
*by Larry & Wendy Barnet*

## Susan Schwaid Early Learning Center Fund

### In Appreciation of:

Temple Emanu-El & the Susan  
Schwaid Early Learning Center  
*by Howard Berman*

## Youth Group/STEEMY Fund

### In Honor of:

Jeff Rudd  
*by David & Teddi Robbins*

### In Memory of:

Louis Farb & Toba Vallens Farb  
*by Ruth Farb*

## Sarasota Arthritis Center



Ronald I. Weitzner, M.D.  
Richard A. Yonker, D.O.  
Jeffrey L. Kaine, M.D.  
Yoel Drucker, M.D.  
Robert L. Ikeman, M.D.  
Tatiana Huguenin, M.D.  
Bradley Weitzner, M.D.  
Jaishree Manohar, M.D.  
Cindy V. Johnston, M.D.  
Kimberly Lyn Shue, M.D.  
Jesse Boodoo, M.D.

1945 Versailles St.  
Sarasota, Florida 34239  
941-365-0770  
941-955-8984 fax  
[www.arthritiscenters.net](http://www.arthritiscenters.net)

Offices in Bradenton,  
Venice and Englewood  
are listed on the reverse

### Our other offices:

Sarasota  
Arthritis Research Center  
1945 Versailles St., Suite 101  
Sarasota, FL 34239  
941 366-1244

Bradenton  
Arthritis Center  
5308 4th Ave. Circle East  
Bradenton, FL 34208  
941 567-4021

Venice  
Arthritis Center  
411 Commercial Ct., Ste. D  
Venice, FL 34292  
941 484-4409

Englewood  
Arthritis Center  
684 S. Indiana Ave.  
Englewood, FL 34223  
941 475-3839



# because **we CARE** for you about you.

We believe your doctor should get to know you personally, have the flexibility to see you at any time, and commit to delivering benefit-oriented care and advice tailored to your unique needs.

Discover how LernerCohen puts the **CARE** in Healthcare. Schedule a meet and greet to see if concierge care is right for you.



**The Doctor Is In. Always.™**

941.953.9080 • [LernerCohen.com](http://LernerCohen.com)  
1921 Waldemere Street, Suite 814  
Sarasota, FL 34239

Dr. Brad S. Lerner | Dr. Louis M. Cohen  
Dr. James R. Cocco | Dr. Amy M. Roth



## TEMPLE EMANU-EL

151 McIntosh Road  
Sarasota, Florida 34232

[WWW.SARASOTATEMPLE.ORG](http://WWW.SARASOTATEMPLE.ORG)

Office ..... 941-371-2788  
Maintenance ..... 941-371-2805  
Religious School ..... 941-378-5567  
Pre School ..... 941-377-8074

## TEMPLE STAFF

Rabbi ..... Brenner Glickman  
Associate Rabbi ..... Michael Shefrin  
President ..... Barry Gerber  
Immediate Past President ..... Ken Marsh  
Brotherhood President ..... Rich Fine  
Sisterhood Co-Presidents ... Susan Simon, Susan Meisel  
Executive Director ..... Christine Elliott  
Religious School Education Dir. ... Sabrina Silverberg  
Susan Schwaib Early Learning Center Dir. ... Elaine Sharrock  
Choir Director/Organist .... Cynthia Roberts-Greene  
Times Editor ..... Alan Zuckerman  
Times Co-Editor ..... Dr. Eleanor Wachs  
Times Editorial Staff ..... Mary Alterman,  
Howie Goldberg, Susan Kilman, Ellen Lenk,  
Herb Lenk, Joan Levenson, Sharly Gold



At Toale Brothers, we understand the value of family in planning for the future and honoring loved ones. That's why we are still owned and operated by the Toale family, who have provided support, guidance and helpful resources to the people of our community during their time of need since 1948.

For three generations, we have remained focused on celebrating lives with compassion, respect and personal attention. Not because it is our legacy, but because we genuinely care.

**Proud to be a part of Sarasota's history.**

**Honored to be a part of your family's celebration of life.**

[www.ToaleBrothers.com](http://www.ToaleBrothers.com) | 941.955.4171

**TIME VALUE**  
PLEASE DELIVER  
BY FEB 1

NON-PROFIT ORGANIZATION  
US POSTAGE  
**PAID**  
MANASOTA, FL  
PERMIT #63

**SHELDON PALEY**   
EXPERIENCE & INTEGRITY



“ **BEST IN CLIENT SATISFACTION  
FOR 14 CONSECUTIVE YEARS** ”

— AS SEEN IN SARASOTA MAGAZINE



Certified Senior Real Estate Specialist | Certified International Property Specialist

Premier | Sotheby's  
INTERNATIONAL REALTY

[PREMIERSOTHEBYSREALTY.COM](http://PREMIERSOTHEBYSREALTY.COM)

941.356.1857

[www.paleyproperties.com](http://www.paleyproperties.com)

[sheldon.paley@premiersir.com](mailto:sheldon.paley@premiersir.com)

Sotheby's International Realty® and the Sotheby's International Realty logo are registered service marks used with permission. Each office is independently owned and operated. Equal Housing Opportunity.