

Join Jewish communities around the world for the 5th Annual Reverse Tashlich (our 1st), for their annual waterfront clean-up, a mitzvah, and a new High Holiday ritual to repair the sea.

To sign up, contact Deb Carlson dcarlson187@att.net or Susan Mendelsohn mendelsr@gmail.com.

President's Column	3
Rabbi's Column	4-5
High Holidays	5-6
Community	7
Rabbi Leon Wind Religious School	8
Celebration Dates	9
Sisterhood Speaks	10-11

Brotherhood Corner	12
Leave a Legacy	13
The Endowment Foundation	14
Contributions from Thoughtful People	15
Calendar	16
Ads from Our Sponsors	17-19
Interfaith Service	20

BETH SHOLOM B'NAI ISRAEL
400 Middle Turnpike East, Manchester, CT 06040
(860) 643-9563 www.myshul.org

Clergy

Rabbi: Randall J. Konigsburg
rabbenu@myshul.org
Rabbi Emeritus: Richard J. Plavin

Staff

Office Manager: Judy Sawtelle
admin@myshul.org
Marketing Coordinator: Allison Sawtelle
programming@myshul.org
Bookkeeper: Shari Haley
accounting@myshul.org
Education Director: Rabbi Alan Lefkowitz
RLWRSDirector@myshul.org
Maintenance Specialist: Dave Pastula

BSBI Board of Directors

President: Russ Benblatt

Co-Vice Presidents of Finance: Alan & Hope Igdalsky
Co-Vice Presidents of Membership: Judy Meyer / Ilene O'Neil
Co-Vice Presidents of Ritual: Maury Luxemburg / Paul Rubin
Co-Vice Presidents of Education: Rebecca Rumbo / Bea Brodie
Vice President of Administration: Ron Abrahams
Vice President of Buildings & Grounds: Ed Reilly
Recording Secretary: Steven Wollins
Immediate Past Co-Presidents: Dawn & Jack Steigelfest
Sisterhood Representative: Brina Abrahams
Brotherhood Representative: Dave Alter
Board of Trustees Representative: Gordon Brodie
Member At Large: Jay Bigman
Member At Large: Liza Mandel
Member At Large: Spin Zucker
Chair, Personnel: Mike Turk
Co-Chairs, Social Action: Deb Carlson / Susan Mendelsohn
Chair, Adult Programming: Gayle Block
Legal Counsel: Bruce Beck

Services

Monday - Thursday: 7:00 PM
Friday: 6:00 PM
Saturday: 10:00 AM

All service times are as listed above unless otherwise noted in the calendar. The entire community is welcome to attend our services.

**AFFILIATED WITH THE UNITED SYNAGOGUE OF
CONSERVATIVE JUDAISM**

Call the Rabbi!

Rabbi Konigsburg visits the local hospitals on a regular basis. An important part of his duties is to bring comfort and healing to those who are sick. Due to privacy laws, the hospitals can't tell him if one of our members has been admitted. He could be just down the hall, but if he doesn't know someone is there, he will not know to make a visit.

Please call the Rabbi if you or someone you know is in the hospital so a timely visit can be made: 860-643-9563



Find us on
Facebook

<https://www.facebook.com/myshul/>

UPCOMING EVENTS

Sunday, October 2 (Tishrei 7)

10:00am Kever Avot

Tuesday, October 4: Erev Yom Kippur (Tishrei 9)

6:00pm Kol Nidre
6:09pm Candle Lighting

Wednesday, October 5: Yom Kippur, Yizkor (Tishrei 10)

Office Closed
9:00am Yom Kippur Morning Service
11:00am Yom Kippur Family Service
4:15pm Concluding Service of Yom Kippur
7:10pm Havdalah

Sunday, October 9: Erev Sukkot (Tishrei 14)

12:00pm RLWRS Lunch in the Sukkah
6:00pm Sukkot Service
6:01pm Candle Lighting

Monday, October 10: Sukkot (Tishrei 15)

Office Closed
10:00am Sukkot Morning Service
6:00pm Sukkot Evening Service
7:02pm Candle Lighting

Tuesday, October 11: Sukkot (Tishrei 16)

Office Closed
10:00am Sukkot Morning Service
7:00pm Havdalah

Saturday, October 15 (Tishrei 20)

10:00am Junior Congregation

Sunday, October 16: Hoshana Rabbah (Tishrei 21)

10:00am Hoshana Rabbah
12:30pm Steak & Schnapps in the Sukkah
2:30pm Cemetery Annual Meeting
5:49pm Candle Lighting
6:00pm Shemini Atzeret Evening Service

Monday, October 17: Shmini Atzeret, Yizkor (Tishrei 22)

Office Closed
10:00am Shemini Atzeret Morning Service & Yizkor
6:00pm Simchat Torah Crazy Hat & Mask Service
6:51pm Candle Lighting

Tuesday, October 18: Simchat Torah (Tishrei 23)

Office Closed
10:00am Simchat Torah Morning Service
6:49pm Havdalah

Monday, October 24 (Tishrei 29)

7:30pm Sisterhood Donor Dinner

Tuesday, October 25: Rosh Chodesh Cheshvan (Tishrei 30)

7:30pm Sisterhood Board Meeting

Erev Shabbat, October 28 (Cheshvan 3)

6:00pm Brotherhood Kabbalat Shabbat
Dinner/Service

Sunday, October 30 (Cheshvan 5)

10:00am Sisterhood Adventure Walk

Condolences to:

Erika Dworkin, Mali Vishnevsky and
Roberta Ceruti on the death of their
mother and sister, Ellen Dworkin.

Words from the President

Before I say anything else, I have to ask ... Over this past year, if I have offended you in any way, if I have angered you at all, if I have slighted you or caused you grief in any way, I humbly ask for your forgiveness, and ask that you know it was unintentional.

Ever since I was a little kid, I've always had a bit of an issue with the ten days of repentance. Not because I didn't think I had things to repent about - trust me, I do - but I always felt that there was something missing from the process. The Unetanah Tokef discusses the fact that between Rosh Hashanah and Yom Kippur there is an opportunity "to avert the severe decree" through three actions: repentance, prayer, and charity. The piece of the puzzle that I've always felt was missing is gratitude & thankfulness.

I find it impossible to reflect and repent for my actions of the past year without simultaneously thinking about all the good. And not necessarily the good things that I think I've done - but the good things, the kindness shown, and the selflessness of those around me.

So let me take this opportunity to say ...

Thank you to Rabbi Konigsburg for being the spiritual leader of our congregation, for truly caring about us, for being there when people needed uplifting, and for being there when people didn't know they needed uplifting.

Thank you to the Board of Directors and those who nominated me to this position. I consider it a sacred honor to serve this congregation. Without your faith in me, I wouldn't be here doing this now.

Thank you to the congregation for having the faith in me to vote me into this position. I promise you, I will do everything I possibly can to live up to your expectations.

Thank you to BSBI's Office Staff that keeps things moving forward and neatly in-line so the rest of us can do the things we do.

Thank you all, for those things I'm not thinking of, may have forgotten about, or will happen in the year to come.

But I also say again, over this past year, if I have offended you in any way, if I have angered you at all, if I have slighted you or caused you grief in any way, I humbly ask for your forgiveness, and ask that you know it was unintentional.

Shana Tova - May You Have a Happy and a Healthy Year to Come.



Russ Benblatt
BSBI President

Faith, Hope and Prayer

You have heard, and will hear, enough of me during this holiday season. These words are from a different Rabbi. I hope they move you as they have moved me. L'shana Tova

"God is a Woman and She is Growing Older" by Rabbi Maggie Wenig (adapted)

God is a woman and she is growing older. She moves more slowly now. She cannot stand erect. Her face is lined. Her voice is scratchy. Sometimes she has to strain to hear. God is a woman and she is growing older; yet she remembers everything.

On Rosh Hashanah, the anniversary of the day on which she gave us birth, God sits down at her kitchen table, opens the Book of Memories, and begins turning the pages; and God remembers.

"There, there is the world when it was new and my children when they were young." As she turns each page she smiles, seeing before her, like so many dolls in a department store window, all the beautiful colors of our skin, all the varied shapes and sizes of our bodies. She marvels at our accomplishments: the music we have written, the gardens we have planted, the stories we have told, the ideas we have spun.

"They now can fly faster than the winds I send," she says to herself, "and they sail across the waters which I gathered into seas. They even visit the moon which I set in the sky. But they rarely visit me." There pasted into the pages of her book are all the cards we have ever sent to her when we did not bother to visit. She notices our signatures scrawled beneath the printed words someone else has composed.

Then there are the pages she would rather skip. Things she wishes she could forget. But they stare her in the face and she cannot help but remember: her children spoiling the home she created for us, brothers putting each other in chains. She remembers seeing us racing down dangerous roads—herself unable to stop us.

She remembers the dreams she had for us—dreams we never fulfilled. And she remembers the names, so many names, inscribed in the book, names of all the children she has lost through war and famine, earthquake and accident, disease and suicide. And God remembers the many times she sat by a bedside weeping that she could not halt the process she herself set into motion. On Yom Kippur, God lights candles, one for each of her children, millions of candles lighting up the night, making it bright as day. God stays awake all night turning the pages of her book.

God is lonely, longing for her children, her playful ones. All that dwells on earth does perish. But God endures, so she suffers the sadness of losing all that she holds dear.

God is home, turning the pages of her book. "Come home," she wants to say to us, "Come home." But she won't call. For she is afraid that we will say, "No." She can anticipate the conversation: "We are so busy. We'd love to see you but we just can't come. Too much to do."

Even if we don't realize it, God knows that our business is just an excuse. She knows that we avoid returning to her because we don't want to look into

her age-worn face. It is hard for us to face a god who disappointed our childhood expectations: She did not give us everything we wanted. She did not make us triumphant in battle, successful in business and invincible to pain. We avoid going home to protect ourselves from our disappointment and to protect her. We don't want her to see the disappointment in our eyes. Yet, God knows that it is there and she would have us come home anyway.

What if we did? What if we did go home and visit God? What might it be like?

God would usher us into her kitchen, seat us at her table and pour two cups of tea. She has been alone so long that there is much she wants to say. But we barely allow her to get a word in edgewise, for we are afraid of what she might say and we are afraid of silence. So we fill an hour with our chatter, words, words, so many words. Until, finally, she touches her finger to her lips and says, "Shh. Sha. Be still."

Then she pushes back her chair and says, "Let me have a good look at you." And she looks. And in a single glance, God sees us as both newly born and dying: coughing and crying and laughing and dancing, as a young child afraid of the road ahead and as an old person looking back wondering where the years went.

In a single glance she sees our birth and our death and all the years in between. She sees us as we were when we were young: when we idolized her and trustingly followed her anywhere; when our scrapes and bruises healed quickly, when we were filled with wonder at all things new. She sees us when we were young, when we thought that there was nothing we could not do.

She sees our middle years too: when our energy was unlimited. When we kept house, cooked and cleaned, cared for children, worked, and volunteered—when everyone needed us and we had no time for sleep.

And God sees us in our later years: when we no longer felt so needed; when chaos disrupted the bodily rhythms we had learned to rely upon. She sees us sleeping alone in a room which once slept two.

God sees things about us we have forgotten and things we do not yet know. For naught is hidden from God's sight.

When she is finished looking at us, God might say, "So tell me, how are you?" Now we are afraid to open our mouths and tell her everything she already knows: whom we love; where we hurt; what we have broken or lost; what we wanted to be when we grew up.

So we change the subject. "Remember the time when..."

"Yes, I remember," she says. Suddenly we are both talking at the same time; saying all the things the greeting cards never said:

"I'm sorry that I..."

"That's alright, I forgive you."

"I didn't mean to..."

"I know that. I do."

We look away. "I never felt I could live up to your expectations."



"I always believed you could do anything," she answers.

"What about your future?" she asks us. We do not want to face our future. God hears our reluctance, and she understands.

We are growing older as God is growing older. How much like her we have become.

God holds our face in her two hands and whispers, "Do not be afraid, I will be faithful to the promise I made to you when you were young. I will be with you. Even to your old age I will be with you. When you are grey-headed still I will hold you. I gave birth to you, I carried you. I will hold you still. Grow old along with me... "

Our fear of the future is tempered now by curiosity. The universe is infinite. Unlimited possibilities are arrayed before us still. We can awaken each morning to wonder: What shall I learn today? What can I create today? What will I notice that I have never seen before? It has been a good visit. Before we leave, it is our turn to take a good look at God. The face which time has marked looks not frail to us now—but wise. For we understand that God knows those things only the passage of time can teach: that one can survive the loss of a love; that one can feel secure even in the midst of an ever-changing world; that there is dignity in being alive even when every bone aches. God's movements seem not slow to us—but strong and intent, unlike our own.

For we are too busy to see beneath the surface. We speak too rapidly to truly listen, and we move too quickly to feel what we touch. We form opinions too fast to judge honestly. While God, God moves slowly and with intention. God sees everything there is to see, understands everything God hears, and touches all that lives.

Ahh, that is why we were created to grow older: each added day of life, each new year makes us more like God, who is ever growing older.

How often do we sit in the house of prayer holding in our hands pages of greeting cards bound together into a prayer book, hundreds of words we ourselves have not written. Will we merely place our signatures at the bottom and drop the cards — the prayer book — in the mail?

God would prefer that we come home. She is waiting for us, ever patiently, until we are ready. God will not sleep. She will leave the door open and the candles burning waiting patiently for us to come home.

Perhaps one day ... perhaps one day we will be able to look into God's aging face and say, "Avinu Malkeinu, our Parent, our Ruler, we have come home."

YOM KIPPUR

Sunday, October 2, 2022

Kever Avot 10:00 AM

At Beth Sholom Memorial Park, Manchester, CT

Tuesday, October 4, 2022

Kol Nidre 6:00 PM

Candle-Lighting 6:09 PM

We will not have candles for lighting at the synagogue this year. Please light before you leave home with the intention that the holiday will not begin for you until 6:09 pm

Wednesday, October 5, 2022

Morning Service 9:00 AM – 3:00 PM

Shacharit 9:00 AM

Torah Service 10:30 AM

Yizkor 12:00 PM

Family Service 11:00 AM

Concluding Service 4:15 PM – 7:10 PM

Mincha 4:15 PM

Neilah 5:50 PM

Maariv 6:50 PM

Sounding of Shofar 7:10 PM

Sukkot

Sunday, October 9:

Evening service 6:00 PM

Tuesday, October 10:

Morning service 10:00 am-12:30 PM

Mincha/Maariv service 6:00 PM

Tuesday, October 11:

Morning service 10:00 am-12:30 PM

No evening service

The arbah minim (lulav and etrog) will be used at the morning service on Monday, October 10 and Tuesday, October 11.

Shemini Atzeret

Sunday, October 16:

Evening service 6:00 PM

Monday, October 17:

Morning service & Yizkor 10:00 am-12:30 PM

Simchat Torah:

Crazy Hat & Mask service 6:00 PM

Tuesday, October 18:

Simchat Torah:

Morning service 10:00 am-1:00 PM

No evening service

Havdalah 7:18 PM

Community Thank you



Thank you to the volunteers who came to polish the silver on September 19th.



A Taste of Honey

Thank you to everyone who helped make A Taste of Honey such a sweet event!



Faith and Family Day: Yard Goats

BSBI community leaders were honored at Faith and Family Day - Jewish Heritage event.



Update Your Contact Information!

- Have a new cell number or gave up your landline?
 - Want to be added to our email list to get our bi-weekly announcements, sad news notifications and other important information related to the congregation?
 - Think you signed up to get emails but haven't received any?
 - Planning on moving or getting a new email address?
 - Have a child who has gone off to college and would like to keep up to date with life at BSBI?
 - Please contact the office directly regarding ANY changes or issues by or by sending an email to admin@myshul.org.
- REMEMBER: We cannot reach you if our records are not up to date!*

Rabbi Leon Wind Religious School Update

Harvest Time!

For the holiday of Sukkot, we build a booth. We hang fruits and vegetables, and if we're lucky, some of us hop from Sukkah to Sukkah.

The holiday of Sukkot comes from ancient times, when harvest booths were built to appeal to the Greater Power by displaying, with thanks, the fruits of the earth from this season. Gathering fruits in ancient time was potentially a time for the strongest sense of accomplishment.

But the meaning of Sukkot goes deeper than a mere harvest celebration. During the High Holy Days we take time for introspection, to reflect on our behavior and our spiritual status. On Yom Kippur in particular, we linger, taking that final chance to resolve on new directions.

At harvest time, we look at the abundance we have gathered. The piles of grain or squash represent work and its results, the capacity to withstand the coming months. It is normally a time to experience the strength of being in our home.

But the Torah reminds us that we are not merely the sum of what we have produced. During Sukkot, we are commanded to leave the strength of our house and build a temporary shelter. We dwell inside a fragile hut made of branches, the roof so insubstantial that we're able to see the stars right through it. Having removed ourselves from our habitual sense of security, we are reminded of the fragility of life—and our need to trust in God.

And then, we are asked to celebrate in that flimsy hut. Sukkot is referred to as “z'man simchatenu,” the time of our joy. How emphatic a point is that! We find joy even without the solid walls and roof that normally shelter us.

The lessons of Sukkot, then, are to reap our harvest, count our grain, display the fruits publicly, move into the temporary space, and call this a time of our joy.

Showing up for Yom Kippur and skipping Sukkot and Simchat Torah is like showing up for your wedding, going under the chuppah and then running off before the reception!

On Yom Kippur we were under the chuppah with God. Sukkot is the seven days of rejoicing—the “reception” to the wedding. The Torah says, “Celebrate! Enjoy your abundance, hold high your accomplishments, and love your homes. The best is yet to come!”

Chag Sameach, Happy holidays!
Rabbi Alan

RLWRS Update:

Our school year got off to a great start with two events: a Back-to-School Ice Cream Social and BSBI's annual A Taste of Honey.

The ice cream social was held on Thursday, August 25, and featured a make-your-own sundae assembly line for students, teachers, and parents. Rabbi Alan led the children in singing, and vast quantities of ice cream, sprinkles, chocolate sauce, and whipped cream were consumed by all! New families were given tours of the school wing as part of orientation. The evening was a delightful preview of a new year of learning.

On Sunday, September 11—the first day of school for RLWRS students—A Taste of Honey was held outdoors. Other than a few sprinkles, the threat of rain held off, and families enjoyed the annual hot dog feast courtesy of Brotherhood (with honey cake for dessert!) and a wonderful show by our favorite magician, Bryan Lizotte. Thanks to Ilene O'Neil for twelve years of apples, honey, and a fun beginning of the new year!

Watch this space for upcoming events for school and shul!

Celebration Dates in September

Happy Birthday to:

Mathew O'Neil 10/6
Gail Freedman 10/7
Linda Kaplan 10/8
Alexander O'Neil 10/9
Lynn Cohen 10/9
Kayla O'Brien 10/9
Iris Ostrom 10/10
Gabriel O'Neil 10/13
Joshua Rumbo Stern 10/13
Rhoda Grossman 10/15
Hope Igdalsky 10/16
Leon Silverman 10/17

Harold Meyer 10/17
Barbara Banks 10/18
Hans Laufer 10/18
Michael Bula 10/19
Avalon Taboada 10/19
Harrison Serow 10/20
David Engelson 10/22
Gordon Brodie 10/22
Marcia Cyr 10/26
Arnold Keyser 10/28
William Bayer 10/30
Jeremy Serow 10/30

Happy Anniversary to:

Steven & Barbara Leshin 10/9
Glenn & Tiffany Blumenstein 10/10
David & Rima Riedel 10/12
Ted & Teresa Lloyd 10/15
Neil & Florence Kovensky 10/18

Craig & Debra Cinquemani 10/18
William & Rachel Spector 10/29
Joel & Susan Ellis 10/31



Have a simcha you want to share with the congregation? Make sure to notify Allison at programming@myshul.org so she can include it in the bulletin!



If we have overlooked a special date please contact us at: 860-643-9563 ext. 100 so that we may celebrate it in the future.

What's Ahead for Sisterhood

Monday, October 24

7:30 pm: Donor Dessert at BSBI

Tuesday, October 25

7:30 pm: Sisterhood Board Meeting

Sunday, October 30

10:00 am: Adventure Walk

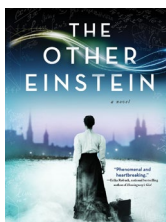
Tuesday, November 8

1:30 pm: Knit & Kvetch

Monday, November 14

7:45pm: Hadassah-Sisterhood Book Club

Hadassah - Sisterhood Book Club



We will not meet in October due to the holidays. Our next meeting will be on Monday, November 14 at 7:45 pm on Zoom. If you want to catch up with other members you can log on at 7:30 pm.

The Mary Cheney Research librarian will be ordering the book *The Other Einstein* by Marie Benedict and will be holding copies of the books for the BSBI Book Group. The zoom link will be posted closer to the meeting date.

Maxine Lerman and Becky Murray

Adventure Walk

Hi Walkers, we'll be walking again on Sunday, October 30, at 10:00 am. Come with us and wear a mask; we'll keep our distance and get some exercise. Fall colors should be lovely then and we'll enjoy being outdoors. And as always, our walks are weather permitting.

Family members and spouses are welcome to join, socially distanced from those not in the family bubble.

Meet us in BSBI's parking lot by 10:00 am. We will decide where we are going and off we will go!

Margie Partney

Share an Oneg

The pulpit flowers for Yom Kippur, October 4, will be sponsored by Sisterhood.

The pulpit flowers for Sukkot, October 9 - 18, will be sponsored by Mimi Kalman in memory of her beloved Mother, Judith A. Levitas, and her 100 Simhat Torah birthdays.

Call or email me if you would like to enhance your simcha with pulpit flowers.

Mimi Kalman, Pulpit Flower Chair,
mimrk524@gmail.com, 860-649-3890

Time to Pay Sisterhood Annual Dues

With the New Year comes a new year for Sisterhood. We do hope that you will once again (or for the first time) join us and send your dues check, for \$36.00, made out to:

BSBI Sisterhood, Diane Keyser
99 Hollister Street, Manchester, CT.

Sisterhood does so much for our synagogue, from Kiddushim on Shabbat, to Camp Scholarships and many programs in between. We do hope you will support us. [Please fill out the form here.](#)

Sisterhood Gift Shop, Your Source for all Your Simchot

Like something new for the holidays? We have a nice selection of tallitot, tallit clips, kippot, and if you are invited to someone's home for break-the-fast you can still bring something from our assortment of honey pots and apple dishes. If you don't see what you need, we'll be happy to order it for you.

Please call Harriet Beede or Brenda Lerner, and we'll be happy to meet you at a time that is convenient for you.

Harriet Beede, hmbeede@gmail.com, 860-305-8711
Brenda Lerner, brenler@cox.net, 860-643-9700

Torah Fund Cards

Mazel Tov to Susan and Maury Luxemburg in honor of the marriage of their son Marcus to Eliana Peck from Mimi Kalman.

Condolences to Erika Dworkin in memory of her mother, Ellen Dworkin, from Sylvia Cheerman.

Mazel tov to Trudy Singer in honor of her granddaughter Molly's Bat Mitzvah from Joan Baron.

To order cards for all occasions contact Lynn Cohen, our Torah Fund Card Chairperson, at 860-298-0457 or cohenlynn334@gmail.com.

What is Torah Fund?

Torah Fund is administered by Women's League for Conservative Judaism (WLCJ), the national organization of all our Conservative Sisterhoods.

Why give to Torah Fund? In doing so, your generosity helps provide essential scholarships and programs to train future leaders of the Jewish community. Torah Fund helps develop future rabbis, cantors, educators, synagogue administrators, social workers, scholars, researchers, lay leaders and others. When you support Torah Fund, you help educate students in Conservative/Masorti seminaries in New York, Los Angeles, Jerusalem, Buenos Aires and Potsdam, Germany, and you align with those who value knowledge, learning and providing the future generation with relevant skills to enrich the Jewish people.

Each year Torah Fund chooses a theme (this year is "Chazak v'Ematz - Be Strong and Courageous") and a special pin is designed to go with the theme to be given to donors who give \$180. The \$180 does not need to be given all at once. You can pay monthly \$18 for ten months or \$36 for five. I will be happy to keep track of your monthly payments. Your donation in any amount is always welcome; all donations are important.

Send your checks, in any amount and made out to Torah Fund, to me: Mimi Kalman, 163 Scott Drive, Manchester, CT 06042

Mimi Kalman, BSBI Torah Fund Chair

Knit & Kvetch

There will Not be a Knit & Kvetch meeting in October because of Sukkot.

On Tuesday, November 8th we will have our annual distribution in the auditorium at 1:30pm. If you have anything to donate please bring it that day before 2:30 or you can leave it ahead of time in the coat room. Please mark it for K and K and let Judy know, so she can tell me we have donations waiting. Thank you.

If you have any questions, you can email me at Irannefink@gmail.com or call me at 860-649-6551.

Anne Fink

Sisterhood Donor Dessert

October 24, 7:30pm
Open to all our BSBI Family

Sisterhood Donor Dinner has always been our most important annual fundraiser. This year we are planning a Donor Dessert, on **October 24th, at 7:30 pm at BSBI**. We have a dynamic speaker, Sherry Levin, whom you will not want to miss.



Why is a beautiful mezuzah on the doorpost of the women's basketball team lounge at Holy Cross College, a Catholic Jesuit school? Because, last November the lounge was dedicated in honor of our guest speaker, Sherry Levin. The space was blessed by the school priest and Levin's family rabbi, and Holy Cross also asked if a mezuzah could be placed on the doorpost of the room.

Sherry had been a outstanding basketball player in high school, but wasn't sure where to go for college. Then she heard that former Boston Celtics player Togo Palazzi had been hired as the head coach of Holy Cross women's basketball. She had enjoyed being coached by him earlier at a basketball camp.

After talking to him, she was ready to commit to a Catholic college except for one problem: she is Jewish. Her rabbi assured her that if she remained Jewish in her heart, her surroundings didn't matter.

At Holy Cross, she earned the first-ever full female athletic scholarship. From 1980 to 1984, she set records that still stand today. Holy Cross went an impressive 45-1 at home during her college career, and she was also named to the Jewish All-American First Team from 1981 through 1984.

In 1981 Sherry traveled to Israel for the Maccabiah, and she won a silver medal with the women's basketball team along with another silver as a member of the 4x400 relay track team. Sherry has returned to Israel with the women's basketball team for three Maccabiahs as a team manager, and two games as a head coach. Her Maccabiah coaching record is 24-1 with five gold medals.

She has broadcast basketball games as a color analyst with future luminaries such as Robin Roberts, Gus Johnson and Joe Buck.

Our event is open to all our BSBI family, younger and older. Come and hear the talk by this inspirational woman and learn why she has talked about the "Shamash" in pregame pep talks.

We do need to know how many people to expect, so please send your RSVP and your donation check, hopefully generous; remember this is our major fundraiser so Sisterhood can keep on doing what we do for BSBI.

Mail your RSVP and check, made out to BSBI Sisterhood to:
Mimi Kalman, 163 Scott Drive, Manchester, CT 06042.

Brotherhood Corner

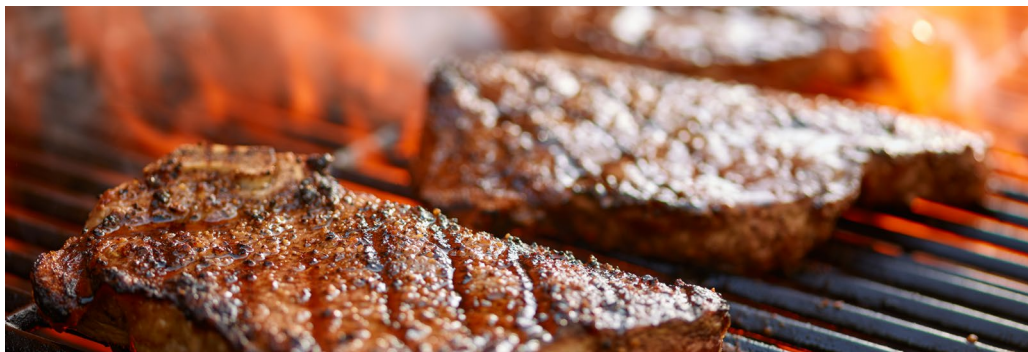
Brotherhood Breakfast & Speaker

The October meeting has been cancelled.

The next Brotherhood Breakfast & Speaker will be on November 13th. More information to come.

Steak & Schnapps in the Sukkah

October 16th
12:30pm



Brotherhood Kabbalat Shabbat Dinner

Friday, October 28, 2022

Service at 6:00 pm. Dinner to follow.

Choices are poultry (chicken or turkey) or salmon.

\$20 per person

\$50 for family of 3 or more
(families can mix & match dinner choices)

All gluten-free other than dessert.

Registration ends at 4:00 pm on
Thursday, October 20th.



The Abitz-Angel Memorial Tournament is sponsored by the Men's Club of BSBI to raise funds for charitable causes. William "Bill" Angel played in the tournament for many years. Bill passed away in September 2017 from a brain tumor. He asked that memorial donations go to the Connecticut Children's Medical Center Foundation for Pediatric Oncology.

Photographer: Harold A. Bernstein

Leave a Jewish Legacy



IRA Assets and Qualified Charitable Distributions

BSBI would like to encourage charitable donations, to help our congregants optimize their charitable giving and to reach their charitable goals. On behalf of the Endowment Board of Trustees I would like to review some of the benefits of gifting Qualified Charitable Distributions (QCDs) to the Endowment. The QCDs may also be used to pay Synagogue dues as well as contribute to the Hineni Society.

Donation of "Qualified Charitable Distributions" (QCD)

In legislation at year end 2016, Congress made permanent qualified charitable distributions (QCDs) from individual retirement accounts.

What are QCDs?

A QCD permits direct transfers to a qualified charity (or charities) totaling up to \$100,000 annually of tax-deferred IRA savings. QCDs offer advantages over taking a taxable IRA distribution and then contributing the proceeds of that distribution to a charity. That's because taxable IRA distributions must be included in adjusted gross income. Importantly, QCDs automatically satisfy required minimum distributions (RMDs) for the year when the QCD is made. That's a real advantage for a charitably minded IRA owner who doesn't depend on some or all of the RMD for living expenses.

What are important things to know about QCDs?

Only individuals who've attained age 70 ½ or older on the date of distribution may make QCDs. The charitable organization must be an organization that qualifies for a charitable income tax deduction of an individual. The Beth Sholom B'nai Israel Synagogue and the BSBI Endowment qualify as such organizations. The BSBI Endowment and Synagogue will be required to provide the same contribution acknowledgement to the owner of the IRA required claiming a charitable tax deduction. Failure to obtain the acknowledgement will quash the QCD. QCDs may be made from any IRA or individual retirement annuity, but not from a simplified employee pension, a simple retirement account, or an inherited IRA. Among other benefits, the use of QCDs for charity may reduce taxable income, reduce state and federal tax, reduce taxation of social security, reduce supplemental IRMMA payments to Medicare parts B and D. Individuals and couples with low as well as high incomes may benefit by contributing QCDs to charity.

Examples of using QCDs for charitable giving

There are several attractive options for the use of QCDs for charitable giving. For example one can use the QCD to pay Synagogue dues and contribute to Hineni. Another example of optimizing the use of QCD is to establish a perpetual endowment fund. By making a QCD donation to the Endowment of BSBI, the donor may create a \$25,000 endowment for BSBI. This endowment may be given over the course of a number of years to reach the level necessary to provide perpetual support of a \$1000 to Hineni. By adding to the donation annually the donor could reach a \$45,000 over a number of years. This amount would support a perpetual Hineni donation at the \$1800 per year level. Details of further possibilities and arrangements for payment can be obtained from the Endowment members or via email noted below. Since the use of QCDs for charitable giving can have specific tax advantages the donor should consult their tax advisor prior to making a QCD contribution. Some plans require significant lead time to process the paper work, so advanced planning may be necessary.

For further information, contact a member of the Endowment Committee. You may reach out to the BSBI Endowment at BSBIEndowment@myshul.org or directly to Roy Filkoff or Jeff Wasser. Remember to discuss this and all other tax matters with your tax advisor before taking any action.

Sincerely,
Jeff Wasser, MD
President of the BSBI Endowment

Will this be the year to leave YOUR Jewish legacy?



Do you have a will?

Have you considered a bequest to BSBI?

Join those members of our Jewish community who have come together to build endowments and legacies to secure a bright Jewish future for BSBI.



For more information, please email:
BSBIEndowment@myshul.org

Endowment Foundation

Scholarships	Rabbi Leon Wind Religious School	Adult Education	Community	General Endowment Fund	<p style="text-align: center;">The Time is Now, The Need is Great!</p> <p>Endowments are an opportunity for each of us to provide for our synagogue on a continuous basis by creating a permanent tribute to our values and principles. Our synagogue is here for you as you experience life's greatest joys and greatest challenges.</p> <p style="text-align: center;"><i>The Endowment Foundation</i></p> <p>*These funds can also be used in Rabbi Leon Wind Religious School</p>
Gloria Byk Fund	Bayer/Davison Fund	Sylvia A. Cheikin Fund	Berkman Family Fund	Israel and Lillian Abramovitz Fund	
Ann and Emanuel Hirth Fund	David Sherman Foster Fund	Clare-Kramer Fund	Klemens-Wiener Fund	Sheldon and Doris Adler Fund	
Maxine & Efrem Jaffe Fund	Hochberg Family Fund	Ruth and Sidney Cohen Fund	Gordon Barshay Lassow and Jay Joshua Lassow Fund	Louis and Sadye Apter Family Fund	
Seymour B. Kaplan Fund	Jacobs Family Fund	Jack Goldberg Fund*	Esther Margulies Lessner and George C. Lessner Fund	Clare and Herbert Bernstein Fund	
Sonia and Max Karp and Anita Karp Treston Fund	Rose Jaffe Fund	F. Ruth and S. I. Kummer Fund	Jerome and Louise Nathan Fund	Raymond Bernstein Fund	
Joseph Kopman Fund	Katz-Robbins Fund	Fay and Benjamin Levy and Max Mandel Fund*	Ella and Herman Plavin Fund	Nathan Chesler Fund	
Anne and Leon Kramer Fund	Ruth Podrove Melton Fund	Aida S. Nesselroth Educational Enhancement Fund*	Plepler Family Fund	A. Elmer Diskan Fund	
Max Lundy Fund	Barney, Jean, Rachel, and Sarah Moses Education Fund	Saul and Carol Nesselroth Fund for Israel Advocacy	Jay E. Rubinow Fund	Ruben Fialkoff Fund	
Laurie Margolis Fund	Gertrude and Abraham Podrove Fund	George and Lillian Sandals Fund	Rita and David Schmerler Fund	Morris and Ann Firestone Fund	
Cantor Israel and Irene Tabatsky Fund	Podrove - Resnick Fund	Ruth and Jack Sandals Fund	Leonard Seader Fund	Rhoda Goldstein Fund	
Marsha and Samuel Yules Fund	Martin L. Rubin Fund	Rabbi Jeshaja and Hilde Schnitzer Fund	Shapiro Family Fund	Edith Gottlieb Fund	
Pauline and Isadore Zackin Fund	Nat N. and Gertrude Sturm Schwedel Fund	Saul and Rebecca Silverstein Fund	Eileen & Fred Stern Family Fund	Leo and Shirley Juran Fund	
Diane and Jeffrey Wasser Ramah Scholarship Fund	Berdine Spector Stoltz Fund	Weil-Braunsberg Fund*	Blanche and Robert Stone Fund	Kahaner Family Fund	
		Elliott and Eveleen Zimmerman Library Fund	Continuity Fund	Ethel and Nathan Kasowitz Fund	
			Program Enhancement	Marcus Family and Bula Family Fund	
			Beth Sholom B'nai Israel Operating Fund	Irving and Ethel Mehlman Rose Fund	
Religious	Youth	Maintenance/Capital Improvements	Memorial Park	Irma and Merwin Meridy Fund	
Max and Sally Glaiber and Joseph and Gertrude Snider Fund	Anna Brita Chilberg Fund	Bayer-Marlow Fund	Temple Beth Sholom Memorial Park Fund	Rita Oshinsky Fund	
Howard Gold Fund	Nellie Katz Cohen Fund	Elaine and Leo Charendoff Fund	Congregation B'nai Israel Memorial Park Fund	Phair Family Fund	
Bernard and May Kahn and Eli and Rose Lerman Fund	Murray H. and Celia D. Novins Fund	David S. and Norma C. Garber Fund		Reichlin Family Fund	
Rubinow-Schwolsky Fund		Miriam Barshay Lassow and Herman Lassow Fund		Pauline and Nathan Rubin Fund	
Rebecca Ann and Herman Seidman Fund		Capital Improvement Fund		Israel and Shirley Snyder Family Fund	
Irene and Henry Springer Fund				Gloria and Robert Weiss Fund	
Diane and Barry Weinbaum Fund				Edythe and Abraham Zubrow Fund	
Rabbi Leon Wind Fund				Max Zucker Fund	
Irene and Abraham Zimmerman Fund					

For information about establishing an Endowment Fund or leaving a bequest,
contact Dr. Jeffrey Wasser BSBIEndowment@myshul.org or Rabbi Konigsburg 860-643-9563 x101.

Contributions from Thoughtful People

ANNE & LEON KRAMER FUND

Yahrzeit of Malcolm Clare; *Yahrzeit* of Annie Kramer; *Yahrzeit* of Leon Kramer; *Yahrzeit* of Solomon Kramer; *Yahrzeit* of Bella Clare; *Yahrzeit* of Milton Kramer; *Yahrzeit* of Maxwell Kramer from Marshall & Hannah Kramer

EDITH GOTTLIEB FUND

In loving memory of Edith Gottlieb, on the occasion of her *yahrzeit*, from Lori Gottlieb

ELLIOTT & EVELEEN ZIMMERMAN FUND

In memory of Elliott Zimmerman and his parents on their *Yahrzeit* from Eveleen Zimmerman

GENERAL FUND

Celebrating the life of Ken Goldberg from Joyce & Raymond Kurker

In honor of Ron & Brina receiving the Joe Davis Award; In memory of Jay Stoppelman from Blanche Ross

In honor of a great man, Kenneth Goldberg, from Nancy & Richard Power

In memory of Ken Goldberg from Beechwood Apartments c/o Housing Consultants LLC

In memory of Ken Goldberg from Dental Sciences Dept. at Springfield Technical Community College

In memory of Kenneth Goldberg, beloved and cherished husband, father, cousin and friend to everyone who knew and loved him, from Francine & Eric Smith

In memory of Ken Goldberg from Jane & Bob Levin

In memory of Kenneth Goldberg from Leslie and Michael Goldberg

In memory of Kathryn Gamzon on the occasion of her *yahrzeit* from William Gamzon

Yahrzeit of Philip Davison; *Yahrzeit* of Celia Davison from Dr. Walter Davison

Yahrzeit of Renate Cohen from Kevin & Marcia Cyr

Yahrzeit of Helen Krasne from Michael & Madeline Turk

Yahrzeit of Rita Roth from Sharon and Barry Haight

Yahrzeit of Frieda & Jacob Pearlson from Stanley & Susanne Pearlson

GLORIA BYK FUND

In memory of Gloria Byk from Mrs. Beverly Russo Byk

KAHN -LERMAN TRUST FUND

Yahrzeit of Bernard Kahn, beloved father of Judith Kahn, Maxine Lerman, and Roberta Kahn, from Judith Kahn

NICHUM AVAYLIM FUND

In memory of Ken Goldberg from Sue and Phil Margolis

PHAIR FAMILY FUND

Get Well wishes to Sandi Phair from Alan & Lea Schmerler

RABBI EMERITUS' DISCRETIONARY FUND

Yahrzeit of Theodore Lloyd from Ted & Teresa Lloyd

RABBI LEON WIND RELIGIOUS SCHOOL-SPECIAL FUND FOR EDUCATION

In memory of my beloved sister, Barbara Zimmerman, on the occasion of her 14th *yahrzeit* from Jane Zimmerman

RABBI'S DISCRETIONARY FUND

In memory of my dear friend, Ken Goldberg, a True Mensch, from Bill Cohen

With thanks for Rabbi Konigsburg's kindness from Dorothy Buch

In honor of Rabbi & Michelle Konigsburg for the opportunity to join them and the congregation for services from Toby Klein

In memory of Ken Goldberg from Spin & Lori Zucker

RITA & DAVID SCHMERLER FUND

Mazel tov to Maury and Susan Luxemburg on the marriage of their son, Marcus;

Yahrzeit of Alan's parents, Rita and David

Schmerler; *Yahrzeit* of Lea's parents, Yehuda and Shoshana Klein, from Alan & Lea Schmerler

SHABBAT LUNCHEON FUND

In memory of Ellen Dworkin from Alan & Lea Schmerler

SOCIAL ACTION FUND

With best wishes for Mike Turk on reaching his 80th birthday from Susan Stoppelman

In honor of the birth of grandchild to Jay & Alison Bigman from Elly and Steve Cohen

In memory of Ken Goldberg, beloved husband and father, from Alan & Lea Schmerler

YOUTH ACTIVITIES FUND

In loving memory of James McGee from Marcia, Lindsay & Michaela

October 2022 Calendar

Sunday	Monday	Tuesday	Wednesday	Thursday	Friday	Saturday
						1 (6 Tishrei) Shabbat Shuva <u>10:00am</u> Shabbat Services <u>7:17pm</u> Havdalah <i>Sunset: 6:32pm</i>
2 (7 Tishrei) <u>9:00am</u> Hebrew school K-7 <u>10:00am</u> Kever Avot	3 (8 Tishrei) <u>7:00pm</u> Mincha/Maariv	4 (9 Tishrei) Erev Yom Kippur <u>6:00pm</u> Kol Nidre <u>6:09pm</u> Candle Lighting	5 (10 Tishrei) Yom Kippur, Yizkor <i>Office Closed</i> <u>9:00am</u> Morning Service <u>11:00am</u> Family Service <u>4:15pm</u> Concluding Service <u>7:10pm</u> Havdalah	6 (11 Tishrei) <u>4:30pm</u> Hebrew school Gr 3-7 <u>7:00pm</u> Mincha/Maariv	7 (12 Tishrei) <u>6:00pm</u> Friday Night Services <u>6:04pm</u> Candle Lighting <i>Sunset: 6:22pm</i>	8 (13 Tishrei) <u>10:00am</u> Shabbat Services <u>7:05pm</u> Havdalah <i>Sunset: 6:20pm</i>
9 (14 Tishrei) Erev Sukkot <u>9:00am</u> Hebrew school K-7 <u>12:00pm</u> RLWRS Lunch in the Sukkah <u>6:00pm</u> Sukkot Service <u>6:01pm</u> Candle Lighting	10 (15 Tishrei) Sukkot <i>Office Closed</i> <u>10:00am</u> Morning Service <u>6:00pm</u> Evening Service <u>7:02pm</u> Candle Lighting	11 (16 Tishrei) Sukkot <i>Office Closed</i> <u>10:00am</u> Morning Service <u>7:00pm</u> Havdalah	12 (17 Tishrei) <u>7:00pm</u> Mincha/Maariv	13 (18 Tishrei) <u>2:00pm</u> Bereavement Support Group <u>4:30pm</u> Hebrew school Gr 3-7 <u>7:00pm</u> Mincha/Maariv	14 (19 Tishrei) <u>5:53pm</u> Candle Lighting <u>6:00pm</u> Friday Night Services <i>Sunset: 6:11pm</i>	15 (20 Tishrei) <u>10:00am</u> Shabbat Services <u>10:00am</u> Junior Congregation <u>6:54pm</u> Havdalah <i>Sunset: 6:09pm</i>
16 (21 Tishrei) Hoshana Rabah <u>9:00am</u> Hebrew school K-7 <u>10:00am</u> Hoshana Rabbah <u>12:30pm</u> Steak & Schnapps in the Sukkah <u>2:30pm</u> Cemetery Annual Meeting <u>5:49pm</u> Candle Lighting <u>6:00pm</u> Shemini Atzeret Evening Service	17 (22 Tishrei) Shmini Atzeret Yizkor <i>Office Closed</i> <u>10:00am</u> Morning Service & Yizkor <u>6:00pm</u> Simchat Torah Crazy Hat & Mask Service <u>6:51pm</u> Candle Lighting	18 (23 Tishrei) Simchat Torah <i>Office Closed</i> <u>10:00am</u> Simchat Torah Morning Service <u>6:49pm</u> Havdalah	19 (24 Tishrei) <u>7:00pm</u> Mincha/Maariv <u>7:30pm</u> BOD Meeting	20 (25 Tishrei) <u>4:30pm</u> Hebrew school Gr 3-7 <u>7:00pm</u> Mincha/Maariv	21 (26 Tishrei) <u>5:42pm</u> Candle Lighting <u>6:00pm</u> Friday Night Services <i>Sunset: 6:00pm</i>	22 (27 Tishrei) Shabbat Mevarchim <u>10:00am</u> Shabbat Services <u>6:43pm</u> Havdalah <i>Sunset: 5:58pm</i>
23 (28 Tishrei) <u>9:00am</u> Hebrew school K-7	24 (29 Tishrei) <u>2:00pm</u> Bereavement Support Group <u>7:00pm</u> Mincha/Maariv <u>7:30pm</u> Sisterhood Donor Dinner	25 (30 Tishrei) Rosh Chodesh Cheshvan <u>7:00pm</u> Mincha/Maariv <u>7:30pm</u> Sisterhood Board Meeting	26 (1 Cheshvan) Rosh Chodesh Cheshvan <u>7:00pm</u> Mincha/Maariv	27 (2 Cheshvan) <u>4:30pm</u> Hebrew school Gr 3-7 <u>7:00pm</u> Mincha/Maariv	28 (3 Cheshvan) <u>5:32pm</u> Candle Lighting <u>6:00pm</u> Brotherhood Kabbalat Shabbat Dinner & Service <i>Sunset: 5:50pm</i>	29 (4 Cheshvan) <u>10:00am</u> Shabbat Services <u>6:34pm</u> Havdalah <i>Sunset: 5:49pm</i>
30 (5 Cheshvan) <u>9:00am</u> Hebrew school K-7 <u>10:00am</u> Sisterhood Adventure Walk	31 (6 Cheshvan) <u>7:00pm</u> Mincha/Maariv					

Please note that the *Chai Lights* calendar dates are as of the date of publishing. Any schedule changes after this time will be posted on the online calendar at myshul.org and included in the weekly announcements.



Simple, Affordable, Jewish Funerals.

 **BLUMENSTEIN**
FUNERALS

860-243-6000 | blumensteinfunerals.com

See Your Ad Here and Support BSBI!

For more information, contact Allison Sawtelle at programming@myshul.org or call 860-643-9563 x100



For news of Israel, there's
Haaretz, Maariv, and the
Jerusalem Post.

For news of
Manchester and Vernon,
there's only the
Journal Inquirer

Joel L. Rosenlicht, D.M.D.
Ryaz Ansari, D.D.S.



Rosenlicht & Ansari
Implant Dentistry, Oral and Facial Surgery Center

The smart choice for:

- * Dental Implants
~Teeth in a Day
- * Wisdom Teeth
- * Snoring

483 Middle Turnpike West
(860) 649 - 2272
www.Jawfixers.com



Manchester 317 Highland Street 860-646-4277	Glastonbury 1320 Manchester Road 860-659-1717
Farmington 204 Main Street 860-674-9536	Suffield 68 Bridge Street 860-668-9660

• www.highlandparkmarket.com •

Lynch Motors Inc.

LYNCH



TOYOTA
179-235 TOLLAND TPKE
(860) 646-4321

MANCHESTER, CT

Proudly Supported by the



Jewish Federation
OF GREATER HARTFORD

JOYCE EPSTEIN
Owner/Broker

111 Main Street
Manchester, CT 06042



Email: Joyce@JoyceEpstein.com
www: JoyceEpstein.com

INTEGRITY KNOWLEDGE SERVICE



- Retirement Income Planning
- Divorce Financial Planning
- College Savings Plans
- Fee based Money Management
- Annuities
- Life Insurance

Contact: Jay Bigman

jay@jaybigman.com

860-644-9834

www.jaybigman.com

Securities by Licensed Individuals Offered
Through Securities America Inc. A Registered
Broker/Dealer. Member FINRA, SIPC



**Home Bound?
Prefer at Home Foot Care?**

Manchester Podiatry Center, P.C.
1-888-804-7180
by appointment only

House Calls

Call Dr. Kenneth Wichman

and schedule a convenient
visit at your home.

www.ctfootdoctor.com



STANLEY FALKENSTEIN
Attorney at Law

FALKENSTEIN, MEGGERS,
PAUL & ROBINSON, P.C.

113 East Center Street
Manchester, CT 06040-5243
www.113law.com
sfalkenstein@113law.com

phone (860) 649-2865
(860) 649-5278
fax (860) 649-2073
(860) 645-8207



TELEPHONE (860) 872-6016
FAX (860) 872-6614

RONALD A. DEL VECCHIO, D.D.S.
DIPLOMATE AMERICAN BOARD OF PERIODONTICS
PRACTICE LIMITED TO PERIODONTICS AND IMPLANTS

VERNON PROFESSIONAL BUILDING
281 HARTFORD TURNPIKE, RT. 30
VERNON, CONNECTICUT 06066

BECK & ELDERGILL, P.C.

LAWYERS

Employment - Personal Injury - Domestic Relations
447 Center Street, Manchester, CT 06040 (860) 646-5606

**YOUR COMMUNITY.
YOUR FEDERATION.**

IF YOU OR SOMEONE YOU KNOW has had a child introduced to Judaism through the PJ Library or sought consultation about improving the quality of life for an aging parent at Jewish Family Services of Greater Hartford, then you know how important the Annual Campaign is to our community.

EVERY YEAR, THROUGH THE ANNUAL CAMPAIGN, countless lives are saved, cared for, reached out to and rebuilt.

WITH ONE GIFT, YOU CAN MAKE A WORLD OF DIFFERENCE in many of the causes important to you—all at once. With Federation's community based giving wherever the need is greatest, we address it because of donations from donors like you.



Jewish Federation
OF GREATER HARTFORD

www.JewishHartford.org

f | www.facebook.com/JewishHartford
t | @JewishHartford



THE TROPHY SHOP

—Since 1972—

Plaques, Trophies and Engraving Services

www.thetrophyshop.biz

(A Wraith Industries LLC Company)

214 Hartford Turnpike • Vernon • CT • 06066
sales@thetrophyshop.biz • (860) 871-0867

LAW OFFICES OF
PAUL L. RUBIN

PAUL L. RUBIN
Attorney at Law

135 East Center Street • Manchester, CT 06040
Tel. 860-647-9210 • Fax 860-647-9265
E-Mail: attyrubin@aol.com

HEBREW FUNERAL ASSOCIATION, INC.

A traditional way for all Jews since 1898

"A True Act of Kindness" - חסד של אמת

Leonard J. Holtz, Executive Funeral Director

Second Generation Serving Greater Hartford

906 Farmington Ave., West Hartford, CT

Tel. (860) 224-2337

Cell (860) 888-6919

P.O. Box 370302, West Hartford, CT 06137

Pre-Paid Funeral Trusts

TotalVision Eyecare

Medical eye care • Contact lenses • Custom eyewear

Lance I. Alpert, O.D.

Doctor of Optometry

362 Middle Turnpike West
Manchester, CT 06040
(860) 649-3311

www.totalvisioneyecare.com
dralp@totalvisioneyecare.com
Check us out on Facebook!

Philip M. Partney 860-463-8173
President



PMP Profix LLC

Small jobs our specialty

- Home Improvements
- Leaky Faucets
- Carpentry Repair
- Custom Shelving
- Dryer Vent Cleaning, and more!

Contact Phil, he can solve your problem!

WWW.PMP Profix.com E-mail: philippartney@pmpprofix.com

CT HIC REG# 0632587

Fully Insured

STUART J. HORN, D.M.D.
GEORGE S. CAYE, D.D.S.

COMPREHENSIVE DENTISTRY

599 Main Street
Manchester, CT 06040

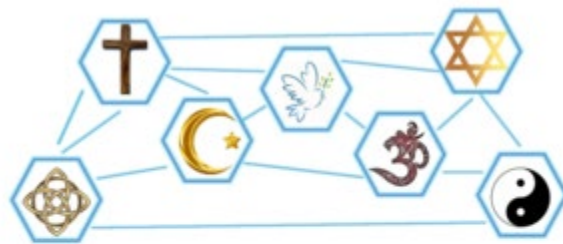
Telephone: (860) 647-1565
Fax: (860) 643-2796

Beth Sholom B'nai Israel
400 Middle Turnpike East
Manchester, CT 06040

Address Service Requested

Time Sensitive Material
Please Do Not Delay

The November *Chai Lights* Deadline is **Wednesday, October 12**
Please send all articles to : Programming@myshul.org



WITH THE PARTICIPATION OF CLERGY
FROM ALL OVER MANCHESTER
BSBI HOSTS

Interfaith Service

Sunday, November 20, 2022
4:00 PM - 5:30 PM

This annual event is also a food drive for our local food pantry.
More information to come soon.