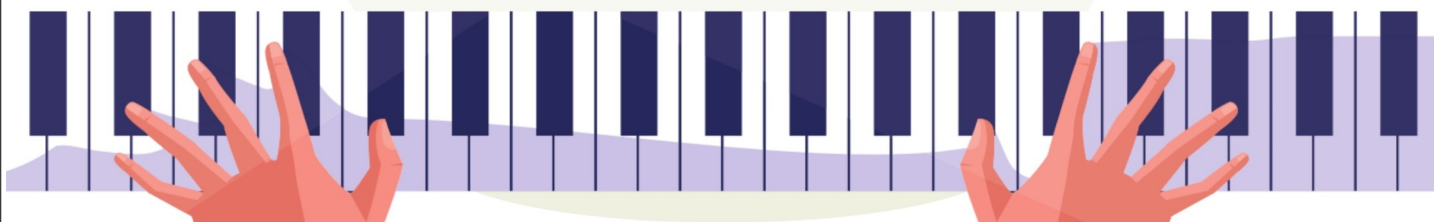




# manchester ct JAZZ FESTIVAL

**Saturday - Dec 4 - 7pm**  
**Cheney Hall in Manchester**

**[myshul.org/jazzfest2021](http://myshul.org/jazzfest2021)**



*COVID protocols will be in place for in-person attendance including vaccination requirement and mask wearing.*

## TEMPLE TOPICS

Rabbi & Co-Presidents	3
Hanukkiyah Lighting	4
BSBI Community	5-6
BSBI Adult Education	7
RLWRS Update	8
Celebration Dates	9
Sisterhood Speaks	10-11
Brotherhood Corner	12

Jazz Festival Sponsor/Ticket Order Form	13-14
Leave a Legacy	15
The Endowment Foundation	16
Contributions from Thoughtful People	17-18
Calendar	19
Announcements	20
Ads from Our Sponsors	21-23
Interfaith Service	Back Page

## BETH SHOLOM B'NAI ISRAEL

400 Middle Turnpike East, Manchester, CT 06040

(860) 643-9563 [www.myshul.org](http://www.myshul.org)

### Clergy

Rabbi: Randall J. Konigsburg

Rabbi Emeritus: Richard J. Plavin

### Staff

Office Manager: Judy Sawtelle

Bookkeeper: Shari Haley

Education Director: Rabbi Alan Lefkowitz

Maintenance Specialist: Dave Pastula

### BSBI Board of Directors

Co-Presidents: Dawn & Jack Steigelfest

Executive Vice President: Russ Benblatt

Co-Vice Presidents of Finance: Alan & Hope Igdalsky

Co-Vice Presidents of Membership: Sally Ivaldi Z"L & Merle Cohen

Vice President of Ritual: Steve Cohen

Co-Vice Presidents of Education: Rebecca Rumbo & Bea Brodie

Vice President of Fundraising: Ken Wichman

Vice President of Administration: Ron Abrahams

Vice President of Buildings & Grounds: Ed Reilly

Vice President of Cemeteries: Liza Mandel

Recording Secretary: Steven Wollins

Immediate Past President: Phil Margolis

Sisterhood Representative: Brina Abrahams

Brotherhood Representative: Dave Alter

Board of Trustees Representative: Gordon Brodie

Member At Large: Steve Cohen

Member At Large: Jay Bigman

Member At Large: Spin Zucker

Co-Chairs, Personnel: Gayle Block & Mike Turk

Chair, Social Action: Carol Hatch

Chair, Youth Activities: Ilene O'Neil

Chair, Adult Programming: Debbie Benblatt

Legal Counsel: Bruce Beck

### Services

Monday through Thursday: 7:00 PM

Friday: 6:00 PM

Saturday: 10:00 AM

All service times are as listed above unless otherwise noted in the calendar. The entire community is welcome to attend any of our services. Services Monday-Thursday are virtual. Friday and Saturday services are hybrid. Zoom information will be included in emails.

You may contact us via email at:

**Rabbi Konigsburg:** [rabbenu@myshul.org](mailto:rabbenu@myshul.org)

**Judy Sawtelle:** [admin@myshul.org](mailto:admin@myshul.org)

**Shari Haley:** [accounting@myshul.org](mailto:accounting@myshul.org)

**Rabbi Alan Lefkowitz:** [RLWRSDirector@myshul.org](mailto:RLWRSDirector@myshul.org)

AFFILIATED WITH THE UNITED SYNAGOGUE OF CONSERVATIVE JUDAISM



## Upcoming Events!

Please visit [www.myshul.org](http://www.myshul.org) for all updates.

### Tuesday, November 2

12:00pm Lunch & Learn

7:30pm BSBI Academy

### Sunday, November 7

9:00am Morning Minyan

9:30am Brotherhood

Breakfast

10:30am Brotherhood

Speaker

### Monday, November 8

7:30pm Sisterhood/

Hadassah Book Club

### Tuesday, November 9

12:00pm Lunch & Learn

1:30pm Knit & Kvetch

Annual Distribution

7:30pm BSBI Academy

### Sunday, November 14

2:00pm Sisterhood Paid Up

Member Event

### Tuesday, November 16

12:00pm Lunch & Learn

7:30pm BSBI Academy

### Wednesday, November 17

7:30pm BOD Board

Meeting

### Friday, November 19

6:00pm Israel Scholar

Weekend & Friday

Services

### Saturday, November 20

10:00am Israel Scholar

Weekend & Shabbat

Services

### Sunday, November 21

9:00am Sisterhood Bake

Sale

10:00am Israel Scholar

Weekend

4:00pm Interfaith Service

### Tuesday, November 23

12:00pm Lunch & Learn

7:30pm Sisterhood Board

Meeting

### Thursday, November 25

Thanksgiving Day

Office Closed

### Friday, November 26

Office Closed

### Sunday, November 28:

#### Erev Hanukkah

10:00am Sisterhood

Adventure Walk

5:30pm Hanukkah 1st

Candle Lighting at BSBI -

Brotherhood

### Monday, November 29:

#### Hanukkah

5:30pm Hanukkah 2nd

Candle Lighting at BSBI -

Social Action

### Tuesday, November 30:

#### Hanukkah

12:00pm Lunch & Learn

5:30pm Hanukkah 3rd

Candle Lighting at BSBI -

Sisterhood

7:30pm BSBI Academy

### Looking Ahead:

#### Wednesday, December 1:

##### Hanukkah

5:30pm Hanukkah 4th

Candle Lighting at BSBI -

Board of Directors

#### Thursday, December 2:

##### Hanukkah

5:30pm Hanukkah 5th

Candle Lighting at BSBI -

RLWRS

#### Friday, December 3:

##### Hanukkah

3:45pm Hanukkah 6th

Candle Lighting at BSBI -

Early Bird

#### Saturday, December 4:

##### Hanukkah

5:30pm Hanukkah 7th

Candle Lighting at BSBI -

Congregation

7:00pm Jazz Fest

#### Sunday, December 5:

##### Hanukkah

12:00pm RLWRS

Hanukkah Celebration

5:30pm Hanukkah 8th

Candle Lighting at BSBI -

Adult Education

### Condolences to:

Myrna Spector and her children; Norman & Octavia Spector and Michael Spector; and to William & Rachel Spector and their entire family on the loss of husband, father, brother, Kenneth Spector.



Find us on

Facebook

<https://www.facebook.com/myshul/>

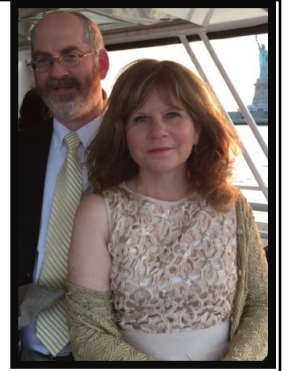
## *Words from the Co-Presidents*

Thanksgiving brings back memories of simpler times, or at least times that seemed simpler. Which is not to say that all of our experiences were remotely alike. In Dawn's family, Thanksgiving involved getting up early, with the day revolving around preparing a delicious meal and appreciating the precious time together that was otherwise hard to come by. In Jack's experience, the gathering of extended family almost always included some sort of athletic competition that usually led to some sort of injury that often culminated in a trip to the hospital. Despite their variety, these experiences share a common theme: family traditions.

The members of BSBI are also a family of sorts. We join based on our shared religious observance, but many of us develop ties as strong as any originating in birth. Our religion provides us with many traditions, and over time we and our friends add some of our own. The easing of the COVID-19 pandemic may allow us each to engage in our favorite traditions this year. Like the Interfaith Service at BSBI we look forward to attending. Or perhaps recent circumstances have forced us to recognize the benefits of remote connections that will become traditions for years to come.

Either way, we hope you enjoy this holiday with those you consider family, with lots of good food and relatively few trips to the hospital.

***Dawn & Jack Steigelfest***  
***BSBI Co-Presidents***



## **Faith, Hope, Prayer**

The Mall is exceptionally crowded and there is not a parking place to be found. A woman drives up and down each lane, looking in vain for a parking space. Finally, in exasperation, she prays, "Dear God, if you help me find a parking space, I will go to minyan every day for a month and donate \$100 to the synagogue." A moment later, a car pulls out of a spot, right in front of her. She says, "Never mind, God, I found one."

I am talking on the phone to someone on my sick list. He is in the middle of a painful treatment, and I offer him words of comfort, to help him be strong in the face of his daily regimen. "I just want to feel good for one day" he says. I tell him, my prayers are for him to feel good every day, "for the next 90 years." He replies, "That would be nice, but it is impossible." I remind him that I am in the miracle business; I don't want only a "partial" healing, I only go for a complete healing.

We all have a very interesting relationship with God. We often set a low bar when we are praying, asking for little when we can ask for a lot. We say the prayer on the High Holy Days, "*Avinu Malkeinu*," it means "Our Father, Our King." We forget that not only are we praying for something from the Ruler of the universe, but we are God's children. Why should God deny us when we would do almost anything for our own children? God certainly answers all our prayers, but like any good parent, sometimes what we get is not exactly what we expect.

We do something wrong, and we expect God to punish us. We look for that punishment that we know is coming. But Judaism teaches us that God is merciful and compassionate, that God does not want to punish us; rather, God wants us to regret what we have done and move to not do it again. Punishment will not make us better human beings, but kindness always makes a difference.

We feel that God has better things to do than worry about us. We are less than a speck of dust in the vastness of the universe. Why should God even know we exist? But Judaism teaches that we are just a bit less than angels, and that God cares for us as tenderly as we care for our own children. We may not understand all that God is, but since we are created in God's image, we know that what we feel and how we act all produces a reaction in God. Most of the time we don't even think about how we and God should interact. We feel awkward and unsure when we pray. Are we praying "correctly"? Are we using the right words? How can we be sure that God hears us? How does God answer our prayers? We are filled with doubts and uncertainty when we should move forward with faith. Everything might not turn out as we would like it, but often things, over time, turn out as they should.

***Continued on pg. 4.***



*I got up early one morning  
and rushed right into the day;  
I had so much to accomplish  
that I didn't have time to pray.  
Problems just tumbled about me,  
and heavier came each task.  
"Why doesn't God help me?" I wondered.  
He answered, "You didn't ask."  
I wanted to see joy and beauty,  
but the day toiled on, gray and bleak;  
I wondered why God didn't show me.  
He said, "But you didn't seek."  
I tried to come into God's presence;  
I used all my keys at the lock.  
God gently and lovingly chided,  
"My child, you didn't knock."  
I woke up early this morning,  
and paused before entering the day;  
I had so much to accomplish  
that I had to take time to pray.  
Author unknown*

Take the time to pray. You never know what is possible unless you ask.

**Rabbi Randall Konigsburg**



## Hanukkiyah Lighting 5782

November 28, 2021 - December 5, 2021

We will have the Hanukkiyah Lighting outside (socially distanced, with masks) on the front lawn. These groups are hosting the lighting, everyone is welcome to attend.



1st Night	Sunday, November 28th	Brotherhood @ 5:30pm
2nd Night	Monday, November 29th	Social Action @ 5:30pm
3rd Night	Tuesday, November 30th	Sisterhood @ 5:30pm
4th Night	Wednesday, December 1st	Board of Directors @ 5:30pm
5th Night	Thursday, December 2nd	RLWRS @ 5:30pm
6th Night	Friday, December 3rd	Early Birds @ 3:45pm*
7th Night	Saturday, December 4th	BSBI Congregation @ 5:30pm
8th Night	Sunday, December 5th	Adult Education @ 5:30pm

\*Please note the time for Friday night.

# BSBI Community

## Social Action Committee

We are once again collecting donations to support the delivery of Thanksgiving meals to needy families in our area. We will be donating to MACC and to HVCC, who will provide gift cards or Thanksgiving meal supplies to families in Manchester, Vernon, Ellington, and Tolland. Your donations will make this possible.



Hanukkah is early this year, with the first night on Sunday of Thanksgiving weekend. We will be sending a donation to the Kosher Food Pantry in West Hartford so that Jewish families in the area can celebrate with us through your generosity. If you wish to donate to this cause, please send your checks to the office with a note designating that it is for the Kosher Food Pantry.

We will also run a Winter Clothing Drive, to collect winter jackets, hats, gloves/mittens, scarves, and boots for refugee families who are beginning to arrive in our state. Gently used items, new items or hand-knit items are welcome.

Finally, we would like to thank Lisa Plavin, the chairperson of the *Nihum Avalim*, one of our important subcommittees. *Nihum Avalim* (Comfort for Mourners) provides Shabbat dinners for families in our congregation who are sitting Shiva after the loss of a loved one. This Mitzvah is one of the ways that we support each other at difficult times. It truly demonstrates our concern and caring for each other, which is an important part of any community. If you would like to help, please contact Lisa Plavin.

**Carol Hatch, Chair, Social Action**

## Count Your Blessings

Please share what you have with others and bring joy to those in our community this Thanksgiving!



As you sit down to enjoy your Thanksgiving meal, you can have a full heart knowing that you helped provide a turkey and all the trimmings for a family who would otherwise not have enjoyed a festive meal.



We are collecting monetary donations to support MACC and Hockanum Valley Community Council in their efforts to provide for those in need this Thanksgiving.

Every donation of \$25 will serve one person. For example, a donation of \$100 will serve a family of 4.

Please send checks payable to BSBI with a memo re: "Turkey fund" by Nov. 5th to Deb Delaney at: 12 Camp Avenue, Newington, CT 06111.

## Winter Coat Drive

Connecticut will soon be welcoming refugees from Afghanistan and other parts of the world. IRIS (Integrated Refugee and Immigrant Services) is looking for winter clothing for our new residents.

They are in need of either gently used or new coats, hats, scarves, waterproof boots and gloves/mittens for women, men and children. They will accept hand-knit items as well.

Please consider donating any of these items. They can be dropped off to the synagogue during office hours starting on **November 15th**, and collection will continue through **December 15th**.

Let's give these new families a warm welcome!!  
Thank you for your help!!!



# BSBI Community

## Thank you

Thank you for all the support of my Book Launch,

From Rima Riedel

I would like to thank the Honors Committee for presenting me with the *Kalat B'reisheet* honor at the Simchat Torah service. It has been my privilege to assist this community in safely navigating this horrific pandemic. However, the information that I have provided would mean nothing if there were not many hard-working and committed people who have listened and made the difficult decisions to put that advice into action. I share this honor with all of them, but must specifically mention Dr. Steven Cohen and the Ritual Committee members, Jack and Dawn Steigelfest, synagogue co-presidents, and Rabbi Konigsburg, all of whom have worked long and hard to do whatever they could to keep the congregation functioning safely while continuing our vital celebrations and activities. I hope that 5782 will be the year when we can return to our normal traditions and ceremonies without fear of COVID.

From Ellen Neuhaus



Dear Rabbi Konigsburg,

Thank you for your gift of \$250 on 7/28/2021 to support UConn Hillel. We are grateful for your wonderful generosity and partnership in creating vibrant, diverse and meaningful Jewish life for our students.

As we start the new academic year, we are grateful for all the opportunities students have for engagement. Whether it's celebrating the High Holidays, attending our popular "Hummus Experience," or simply enjoying Shabbat services and dinner on a Friday evening, students have numerous opportunities to safely and meaningfully connect with their peers, as well as their Judaism.

Your support not only funds UConn Hillel's vital programs but cultivates the current as well as next generation of Jewish leaders.

On behalf of the over 850 students your generosity impacts, thank you for investing in Jewish life at UConn. Please let us know if you would like to come visit and see your support in action by emailing us at [info@uconnhillel.edu](mailto:info@uconnhillel.edu). We think you will feel very positive about the Jewish future!

In Appreciation,

Danielle Bergman  
Development Director

Edina Oestreicher  
Executive Director

## Important: Update Your Contact Information!

- \* Have a new cell number or gave up your landline?
- \* Want to be added to our email list to get our bi-weekly announcements, sad news notifications and other important information related to the congregation?
- \* Think you signed up to get emails but haven't received any?
- \* Planning on moving or getting a new email address?
- \* Have a child who has gone off to college and would like to keep up to date with life at BSBI?

Please contact the office directly regarding **ANY** changes or issues by or by sending an email to [admin@myshul.org](mailto:admin@myshul.org).

**REMEMBER:** We cannot reach you if our records are not up to date!

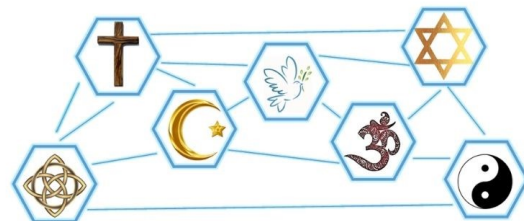
WITH THE PARTICIPATION OF CLERGY  
FROM ALL OVER MANCHESTER  
BSBI HOSTS:

# Interfaith Service

Sunday, November 21, 2021 @ 4:00PM

This annual event is also a food drive for the local food pantry.

Please make your donation this year directly to MACC Charities at [macc-ct.org](http://macc-ct.org)



# BSBI Adult Education

## Lunch and Learn

We will gather at noon for lunch and 12:30pm for our Bible study. When we are not eating, we will need to be masked for the time being.

Instructor: Rabbi Konigsburg

In-Person Only

Fee: \$20/Person

Study Buddy Fee: \$30 (for you & your buddy)

Tuesdays beginning October 19th

## Embracing Judaism

Rabbi Plavin will once again teach his class on basic Judaism for those looking to understand their Judaism better or for those looking to discover a new faith. The class is beginning in January. If you would like to enroll in his class, contact him online at [www.ijewish.org](http://www.ijewish.org). See website for books and fees.

## Wisdom In Winter: Building the Upstander Toolbox with Heather Miller

Mondays- January 24, January 31 and Feb 7, 2022  
7:30 on Zoom

During this 3-session series, we will take a deeper dive into unpacking microaggressions, and work through scenarios that will help you get more comfortable with how to become active upstanders in your community.

We will conclude with a session that will help our community identify its core social justice values and which initiatives we want to own both inside of our tent and in the local community.

**All Three Lectures: \$30/person for the series**



Heather Miller is an educator and future rabbi who is passionate about creating embracing spaces in both the religious and secular parts of her life. As the President of The Flatbush Jewish Center, she strives to build a community that is safe for all of the intersecting identities in its membership. Heather merges her skill sets to work on

committees and projects with USCJ, UJA, partners at JTS, Jewish Education Project, Jews of Color Initiative and JCC Association to help move this work forward in Jewish spaces.

## BSBI Academy

For the first semester we will be looking at the Book of Psalms, focusing on the psalms that we use in prayer. We will be studying from the book *Our Haven Our Strength: The Book of Psalms* by Martin Samuel Cohn. This book is only available as an eBook from Aviv Press. It is in Kindle and Nook format, but you don't need to buy a Kindle or Nook reader. Kindle has an app that can turn any computer/tablet or phone into a Kindle Reader. You should be able to download the app for free, set it up on your device and then buy and download the book using the link below.

If you have any problems, contact Rabbi Konigsburg or Judy Sawtelle.

Instructor: Rabbi Konigsburg

Zoom Only Fee \$20/Person

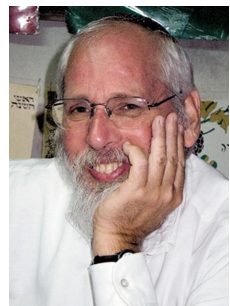
Study Buddy Fee: \$30 (for you & your buddy)

Tuesdays beginning October 19th 7:30PM (Zoom)

<https://www.rabbinicalassembly.org/story/our-haven-and-our-strength-book-psalms>

## BSBI Special Adult Education Event: Israel Scholar Weekend: November 19th-20th, 2021

Our second in our series with **Rabbi Barry Schlesinger** from Herzliya, Israel. He joins us courtesy of the Ministry of Diaspora Affairs in the Government of Israel.



Friday, November 19, 2021 –  
6:00pm Shabbat Services and Lecture  
**“A Midrashic Journey Into Parshat Vayishlach”**  
The stories behind the Stories of Jacob in the Bible.

Saturday November 20, 2021 –10:00am Shabbat Services and Lecture  
**“Gratitude in the Jewish Tradition”** How Judaism looks at being thankful.

Sunday November 21, 2021 – 10:00am  
A program for adults and children in conjunction with our Religious School **“The People of the (Comic) Book”** – a look at how Judaism shaped the values and actions of comic book superheroes.

## Rabbi Leon Wind Religious School

### A Word From Rabbi Alan:

I love our stories. We have such a rich tradition, and we can learn so much about ourselves and our history through our stories. Here is a Talmudic legend about Honi the Circle Maker:

Honi the Wise One was also known as Honi the Circle Maker. By drawing a circle and stepping inside of it, he would recite special prayers for rain, sometimes even argue with God during a drought, and the rains would come. He was, indeed, a miracle maker. As wise as he was, Honi sometimes saw something that puzzled him. Then he would ask questions so he could unravel the mystery.

One day, Honi the Circle Maker was walking on the road and saw a man planting a carob tree. Honi asked the man, "How long will it take for this tree to bear fruit?" The man replied, "Seventy years."

Honi then asked the man, "And do you think you will live another seventy years and eat the fruit of this tree?"

The man answered, "Perhaps not. However, when I was born into this world, I found many carob trees planted by my father and grandfather. Just as they planted trees for me, I am planting trees for my children and grandchildren so they will be able to eat the fruit of these trees."

This is a beautiful legend. Here we read of someone who does nothing for himself; this nameless man that Honi meets is the archetype of the Jewish adult, one who never flinches from the goal of providing for future generations. This nameless person embodies part of our belief system, as we look at ourselves.

We have begun our new religious school year, in person with returning teachers—Sarah and Michele Karasik and Laura Lopez—and three new students, Graham and Harrison Serow and Samantha Rose. As we begin the year, we remind our parents that it is they who are their children's greatest Jewish teachers. Our parents need to know that by being enthusiastic and placing importance on Judaism at home, they are the models so that their children will feel the same. Let us keep that space wide open for spirituality. Some questions to ponder: How are we perpetuating Judaism? How are we being proper Jewish examples to our children?

### UPDATES:

- Everyone in the school is looking forward to the installation of the new air flow system that will enable us to get back into the classrooms.
- Junior Congregation services will begin on Shabbat/Saturday, November 20, 10:00-11:00 a.m. These services will be for our Thursday students and of course any of their family members are welcome to attend.
- Our school Hanukkah celebration will take place on Sunday, December 5.

Kol tuv/With all goodness,  
**Rabbi Alan Lefkowitz**  
**RLWRS Education Director**

### Jewish History 101

Heshvan 26 – Kislev 26

**28 Heshvan** – The population of Jews in Israel reached one million on this date in 1949.

**5 Kislev** – The "Road of Valor" that broke the Siege of Jerusalem and insured that the western part of the city would remain in Jewish hands was officially opened on this date in 1948.

**10 Kislev** – Egyptian President Anwar el-Sadat addressed the Knesset in Jerusalem, the first president of an Arab country to do so, in 1977. The peace with Egypt has lasted to this very day.

**12 Kislev** – Yahrzeit of Solomon Schechter, discoverer of the Cairo Genizah, Chancellor of the Jewish Theological Seminary, and founder of the United Synagogue of America. He died on this date in 1915.

**17 Kislev** – The United Nations voted in favor of the partition of Palestine, making possible the creation of a Jewish State on this date in 1947. Arab nations, in opposition to a Jewish State, began a terrorist campaign in Palestine the next day.





**ShopRite**  
**Manchester**  
**ShopRite**  
 214 Spencer Street  
 Owned & Operated by  
 The Cohen Family

- ✓ Great Quality
- ✓ Great Prices
- ✓ Great People

Monday thru Saturday 6am to 11pm  
 Sunday 6am to 10pm  
 (860) 645-3240

**ShopRite Super Coupon** \$5.00 OFF

All Shoppers Must Present Coupon To Receive Discount

**100 OFF**

**Empire Fresh or Frozen Items**

With this coupon and an add'l. purchase of \$5.00 or more (excluding items prohibited by law), limit one per family. Good at any ShopRite. Effective thru Dec. 31, 2021

# Birthdays



Marilyn Krutt - 11/1	Tiffany Blumenstein - 11/13	Marshall Grodofsky - 11/22
Milly Malkin - 11/2	Gayle Block - 11/14	Steven Cohen - 11/22
Daniel Norman - 11/2	Richard Tardif - 11/14	Maxine Jaffe - 11/25
Andrea Zitomer - 11/3	Iris Linner - 11/15	Anita Rackow - 11/25
Jane Zimmerman - 11/3	Maury Luxemburg - 11/16	Joanna Gertler - 11/26
Joan Baron - 11/4	Casey Reilly Block - 11/16	Ronni Zoback - 11/26
Teri Norman - 11/4	Monroe Rackow - 11/16	Rachel Neuhaus - 11/26
Robert O'Neil - 11/5	Sandi Phair - 11/17	Diane Wasser - 11/26
Dvora Caspi - 11/6	Isaac Abrams - 11/18	Ilene O'Neil - 11/27
Cara Taback Feinstein - 11/8	Joel Rosenlicht - 11/18	Susan Scherick - 11/28
Nelson Orringer - 11/9	Linda Grad - 11/20	Patricia Case - 11/29
Kristin Vyhnaal - 11/12	Marc Ross - 11/21	

# Anniversaries



Kenneth Goldberg & Patricia Case	11/2
Richard & Andrea Tardif	11/3
Sidney & Miriam Schwartz	11/3
Adam & Debra Rosenberg	11/5
Phyllis & Michael Winkler	11/7
William & Debra Delaney	11/21
Ari & Sharon Hartstein	11/26
Dr. Richard Ketai & Dr. Laura Levine	11/26
Eric & Annemarie Miller	11/27



Have a *simcha* you want to share with the congregation?  
 Make sure to notify Tova at [programming@myshul.org](mailto:programming@myshul.org) so  
 she can include it in the bulletin!

***If we have overlooked a special date please contact us at: 860-643-9563 ext. 100  
 so that we may celebrate it in the future.***



## Sisterhood Speaks

Mimi Kalman, Editor



### What's Ahead for Sisterhood?

**Monday, November 8 - 7:30 pm**  
Sisterhood - Hadassah Book Group

**Tuesday, November 9 - 1:30 pm**  
Knit & Kvetch Annual Distribution

**Sunday, November 14 - 2:00 pm**  
Sisterhood Paid-up Membership Afternoon

**Sunday, November 21 - 9:00 am**  
Annual Sisterhood Bake Sale

**Tuesday, November 23 - 7:30 pm**  
Sisterhood Zoom Board meeting

**Sunday, November 28 - 10:00 am**  
Sisterhood Adventure Walk (socially distanced)

**Tuesday, November 30 - 5:30 pm**  
Sisterhood Lighting the Hanukkiyah

Anytime: Yoga with Adriene on YouTube.

### Sisterhood Paid-up Membership Afternoon Sunday, November 14, 2:00 pm

Please come and enjoy:

~Fall treats and coffee

~Time with friends

~Relax with Chair Yoga  
led by Lorelei Chang

There is no charge.

RSVP by November 8th to:

Susan Mendelsohn

mendelsr@gmail.com, 605-695-2464

We will be socially distanced at tables in accordance with the Board of Directors food policies.



### Knit & Kvetch

We are planning our Annual Distribution for Tuesday, November 9th in the BSBI auditorium. If you have any donations for us, please bring them that day before 1:30 pm or bring them to the Temple the week before and leave them (in bags) in the coat room, marked for Knit and Kvetch. Please let someone in the office know that the items are there.

If you have any questions you can email me at [Irannefink@gmail.com](mailto:Irannefink@gmail.com) or call me at 860-649-6551.

### SAVE THE DATE Annual Sisterhood Bake Sale

Please be sure to mark your calendars for the Annual Sisterhood Bake Sale on Sunday, November 21st. More details will be forthcoming on this event.

Debra Ivaldi  
Harriet Beede

860-305-8711 or [hmbeede@gmail.com](mailto:hmbeede@gmail.com)

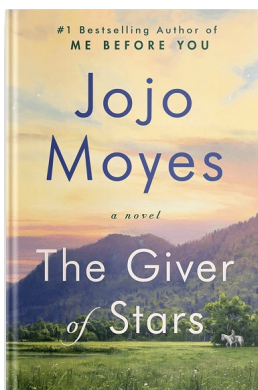
### Sisterhood Hadassah Book Group

We would like to thank Becky Murray for volunteering to help run the book club.

Our next meeting will be on Monday, November 8th, at 7:30pm. We will discuss *The Giver of Stars* by Jojo Moyes.

The Mary Cheney Library's reference desk is holding copies of the book for the BSBI Book Group. A zoom link will be posted closer to the meeting date. Future meeting dates are December 13, January 10, February 7 or 14, March 14, April 4, May 9 and June 13.

Maxine Lerman and Becky Murray



### Torah Fund Cards

Mazel tov to Rachel and Jim Reindel in honor of their 10th wedding anniversary from Sandy and Donald Levy.

Condolences to Ken Wichman in memory of his brother, Michael, Get well to Mimi Kalman and Get well to Gail Freedman from Lynn and Jack Cohen.

Get well to Mimi Kalman and Get well to Gail Freedman from Eveleen Zimmerman.

Mazel tov to Ilene and Bob O'Neill in honor of their daughter Lilian's bat mitzvah from Joan Baron.

Mazel tov to Ron Abrahams on his 80th birthday from Susan and Ron Scherick.

To order cards for all occasions contact our Torah Fund Card Chairperson Lynn Cohen at 860-298-0457 or [cohenlynn334@gmail.com](mailto:cohenlynn334@gmail.com)

### Share an Oneg

Call me to sponsor pulpit flowers to enhance your Simcha.

Mimi Kalman, Pulpit Flower Chair  
860-649-3890, [mimrk524@gmail.com](mailto:mimrk524@gmail.com)

## Sisterhood Speaks Continued

### Adventure Walk



Hi Walkers, we'll be walking again on Sunday, November 28, at 10:00 am. So come with us, wear a mask, we'll keep our distance and get some exercise. Walking off some of that Thanksgiving food should feel great, too. We will definitely see lovely scenery and enjoy being out in the fresh air!

Family members and spouses are welcome to join, socially distanced from those not in the family bubble.

So meet us in BSBI's parking lot by 10:00 am. We will decide where we are going and off we will go!

Margie Partney

### Sisterhood Gift Shop, Your Source for all Your Simchat

The Gift Shop will be open on Sunday, November 14th at 11:00 through 2:30, just in time to do some **Hanukkah shopping!** We have many wonderful items to select from, so please stop by and see us! If you have a need for anything prior to that date, please call Harriet Beede, and she'll arrange to meet you at the Gift shop! If you don't find what you want, we can always do special orders from our catalogs. We look forward to seeing you then. Call us, we will be happy to help you!

Harriet Beede, [hmbeede@gmail.com](mailto:hmbeede@gmail.com) , 860-305-8711  
Brenda Lerner, [brenler@cox.net](mailto:brenler@cox.net) , 860-643-9700

### Yoga On Your Own

Yoga with "The Queen of Pandemic Yoga" Adriene (Mishlar)! So named by the *NY Times*, and she was featured on the TV program *Live With Kelly and Ryan*. So now you not only have Margie's recommendation, but also the *Times* and Kelly and Ryan!

What: Yoga (no cost to you)

When: Any time

Where: In your home

Why: A 10-40 minute session can help with anxiety, calming, feeling rejuvenated

How:

-Access YouTube on your Computer, IPAD, Phone (you can also download the YouTube app to your phone\*)

-Search "Yoga" or "Yoga with Adriene"

(I recommend that instructor)

- There will be a multitude of results to choose from:

- Yoga for Stress Relief
- Wake up Yoga
- Flexibility
- Yoga for Kids

- Have fun and relax!!

\*if you have a SMART TV, Google Chromecast can be used to display the YouTube Video from your phone to TV.



Margie Partney



## Brotherhood Corner



### AAMGT Golf Tournament Has Outstanding Results

This past September 1<sup>st</sup>, the 24<sup>th</sup> Annual Abitz-Angel Memorial Golf Tournament was held at Blackledge Country Club in Hebron, CT. Although there was lots of rain in the afternoon, causing the golf play to be cut short to only 9 holes, there was still record attendance and fun had by all. We had 132 golfers sign up for play, and the course was almost full with AAMGT golfers.

A fun time was had by all, albeit the rains started around noon. Everyone enjoyed a delicious breakfast and then an early dinner supplied by Crown Supermarket of West Hartford.

The AAMGT committee would like to thank the dozens of volunteers who showed up to help, the many BSBI members who either played golf, volunteered, or donated items to our raffle/auction at the conclusion of the day. Our committee members who did tons of works getting this tournament to be such a success include Steve Leshin, Steve Cohen, Rob Parnes, Jay Bigman, Glenn Blumenstein, Russ Benblatt, and Ken Wichman.

Pictured are Jack Steigelfest and Spin Zucker presenting a check for \$12,500 to Connecticut Children's Medical Center/Pediatric Oncology Unit. Other proceeds from the tournament will be given to the BSBI Brotherhood, who in turn donate to other charities such as BSBI, Mazon, HVCC, MACC, and MARC among others.

Stay tuned for our 25<sup>th</sup> Anniversary tournament, which promises to be bigger and better than ever. We are planning for a date in September 2022, so clear your calendars now!

Melanie Angel LeRoy  
Glenn Hauer  
Spin Zucker  
Jack Steigelfest

AAMGT Executive Co-Chairs



### The Borscht Belt of CT: November 7th Beth Rose- Jewish Hist. Soc. of CT

Elizabeth Rose studied history at Swarthmore College, earned a Ph.D. in U.S. history from Rutgers University, and later completed a M.A. in Library Science from SCSU. She has a longstanding interest in Jewish history, as well as women's history and public history, and has taught at several different colleges and universities. She is the author of *A Mother's Job: The History of Day Care* and of *The Promise of Preschool: From Head Start to Universal Pre-kindergarten*. Before coming to the JHS, she served as the Library Director at the Fairfield Museum and History Center, where she helped develop the archives and worked on numerous exhibitions.



### Steak & Schnapps in the Sukkah

Photographed by: Harold Bernstein





# 6th Annual Manchester CT Jazz Festival

December 4th, 2021  
Sponsorship Order Form

Name \_\_\_\_\_ Title \_\_\_\_\_

Business Name \_\_\_\_\_

Street Address \_\_\_\_\_

Phone \_\_\_\_\_ Email \_\_\_\_\_ Website \_\_\_\_\_

**All ads will be placed in our professionally prepared playbill!**  
**All display ads will also be featured on a special page on our website for approximately one year.**

Please select a **SPONSORSHIP** level. **Note: All Ads Due by November 17th**

☐

## **\$2000 – Louis Armstrong**

- \* Full-page ad in digital Playbill
- \* Private Performance by the Alex Nakhimovsky Trio at a future mutually agreed-upon date  
More information at alexnakhimovsky.com
- \* Content-exclusive email blast to BSBI subscriber database -  
Date TBD
- \* Content-exclusive social media posting/promotion through BSBI Facebook page – Date TBD
- \* Logo prominently featured on sponsor page of BSBI website
- \* Half-page ad in monthly BSBI Bulletin for 6 consecutive months of your choosing
- \* One (1) complimentary link to the festival broadcast
- \* 6 VIP Tickets to Performance

☐

## **\$500 – Billie Holiday**

- \* Half-page ad in digital Playbill
- \* Inclusion in one (1) regular weekly email blast to BSBI subscriber database — Date TBD
- \* Content-exclusive social media posting/promotion through BSBI Facebook page – Date TBD
- \* Logo included on sponsor page of BSBI website
- \* Quarter-page ad in monthly BSBI Bulletin during choice of month
- \* One (1) complimentary link to the festival broadcast
- \* 3 VIP Tickets to Performance

☐

## **\$100 – Nancy Wilson**

- \* Business and/or name listing in digital Playbill
- \* Name recognition in one (1) regular weekly email blast to BSBI subscriber database — Date TBD
- \* Business and/or name listing on sponsor page of BSBI website
- \* One (1) complimentary link to the festival broadcast

Ad Source: ☐ use prior ad ☐ will provide electronic file

☐

## **\$1000 – Jackie McLean**

- \* Full-page ad in digital Playbill
- \* Private Solo performance by Alex Nakhimovsky at a future mutually agreed-upon date  
More information at alexnakhimovsky.com
- \* Content-exclusive email blast to BSBI subscriber database  
Date TBD
- \* Content-exclusive social media posting/promotion through BSBI Facebook page – Date TBD
- \* Logo featured on sponsor page of BSBI website
- \* Quarter-page ad in monthly BSBI Bulletin for 3 consecutive months of your choosing
- \* One (1) complimentary link to the festival broadcast
- \* 4 VIP Tickets to Performance

☐

## **\$250 – Paul Brown**

- \* Quarter-page ad in digital Playbill
- \* Inclusion in one (1) regular weekly email blast to BSBI subscriber database — Date TBD
- \* Content-exclusive social media posting/promotion through BSBI Facebook page – Date TBD
- \* Logo included on sponsor page of BSBI website
- \* One (1) complimentary link to the festival broadcast
- \* 2 VIP Tickets to Performance

**Please e-mail electronic ads to [jazzfest@myshul.org](mailto:jazzfest@myshul.org)**

### **Method of Payment**

**To pay by credit card, visit: <https://www.myshul.org/jazzfest2021>.**

**For orders by check, please make checks payable to: Beth Sholom B'nai Israel and return this order form to  
BSBI, 400 Middle Turnpike East, Manchester, CT 06040. 860-643-9563**

**For further information, contact us at [jazzfest@myshul.org](mailto:jazzfest@myshul.org) or call 860-643-9563**

# 6th Annual Manchester CT Jazz Festival

**December 4, 2021**  
**Ticket Order Form**

Please complete all contact information

Name \_\_\_\_\_

Street Address \_\_\_\_\_

Phone \_\_\_\_\_ Email \_\_\_\_\_

## TICKET ORDERS

Admission prices are per person

Live Stream Only: \$36 \_\_\_\_\_

General Seating: \$36 \_\_\_\_\_

VIP Seating: \$72 \_\_\_\_\_

*Includes 2 Complimentary Beverages*

Additional Donation of Your Choice: \$ \_\_\_\_\_

Total Enclosed: \$ \_\_\_\_\_



### Method of Payment

**To pay by credit card, visit: <https://www.myshul.org/jazzfest2021>.**

For orders by check, please make checks payable to: Beth Sholom B'nai Israel and return this order form to  
BSBI, 400 Middle Turnpike East, Manchester, CT 06040. 860-643-9563

# Leave a Jewish Legacy



## IRA Assets and Qualified Charitable Distributions

BSBI would like to encourage charitable donations, to help our congregants optimize their charitable giving and to reach their charitable goals. On behalf of the Endowment Board of Trustees I would like to review some of the benefits of gifting Qualified Charitable Distributions (QCDs) to the Endowment. The QCDs may also be used to pay Synagogue dues as well as contribute to the Hineni Society.

## Donation of "Qualified Charitable Distributions" (QCD)

In legislation at year end 2016, Congress made permanent qualified charitable distributions (QCDs) from individual retirement accounts.

## What are QCDs?

A QCD permits direct transfers to a qualified charity (or charities) totaling up to \$100,000 annually of tax-deferred IRA savings. QCDs offer advantages over taking a taxable IRA distribution and then contributing the proceeds of that distribution to a charity. That's because taxable IRA distributions must be included in adjusted gross income. Importantly, QCDs automatically satisfy required minimum distributions (RMDs) for the year when the QCD is made. That's a real advantage for a charitably minded IRA owner who doesn't depend on some or all of the RMD for living expenses.

## What are important things to know about QCDs?

Only individuals who've attained age 70 ½ or older on the date of distribution may make QCDs. The charitable organization must be an organization that qualifies for a charitable income tax deduction of an individual. The Beth Sholom B'nai Israel Synagogue and the BSBI Endowment qualify as such organizations. The BSBI Endowment and Synagogue will be required to provide the same contribution acknowledgement to the owner of the IRA required claiming a charitable tax deduction. Failure to obtain the acknowledgement will quash the QCD. QCDs may be made from any IRA or individual retirement annuity, but not from a simplified employee pension, a simple retirement account, or an inherited IRA. Among other benefits, the use of QCDs for charity may reduce taxable income, reduce state and federal tax, reduce taxation of social security, reduce supplemental IRMMA payments to Medicare parts B and D. Individuals and couples with low as well as high incomes may benefit by contributing QCDs to charity.

## Examples of using QCDs for charitable giving

There are several attractive options for the use of QCDs for charitable giving. For example one can use the QCD to pay Synagogue dues and contribute to Hineni. Another example of optimizing the use of QCD is to establish a **perpetual endowment** fund. By making a QCD donation to the Endowment of BSBI, the donor may create a \$25,000 endowment for BSBI. This endowment may be given over the course of a number of years to reach the level necessary to provide perpetual support of a \$1000 to **Hineni**. By adding to the donation annually the donor could reach a \$45,000 over a number of years. This amount would support a **perpetual Hineni donation at the \$1800** per year level. Details of further possibilities and arrangements for payment can be obtained from the Endowment members or via email noted below. Since the use of QCDs for charitable giving can have specific tax advantages the donor should consult their tax advisor prior to making a QCD contribution. Some plans require significant lead time to process the paper work, so advanced planning may be necessary.

For further information, contact a member of the Endowment Committee. You may reach out to the BSBI Endowment at [BSBIEndowment@myshul.org](mailto:BSBIEndowment@myshul.org) or directly to Roy Filkoff or Jeff Wasser. Remember to discuss this and all other tax matters with your tax advisor before taking any action.

Sincerely,  
Jeff Wasser, MD  
President of the BSBI Endowment

Will this be the year to leave YOUR Jewish legacy?



*Do you have a will?  
Have you considered a bequest to BSBI?*

Join those members of our Jewish community who have come together to build endowments and legacies to secure a bright Jewish future for BSBI.



For more information, please email:  
[BSBIEndowment@myshul.org](mailto:BSBIEndowment@myshul.org)

# Endowment Foundation

Scholarships	Rabbi Leon Wind Religious School	Adult Education	Community	General Endowment Fund	<b>The Time is Now, The Need is Great!</b>  Endowments are an opportunity for each of us to provide for our synagogue on a continuous basis by creating a permanent tribute to our values and principles.  Our synagogue is here for you as you experience life's greatest joys and greatest challenges.  <i>The Endowment Foundation</i>  *These funds can also be used in Rabbi Leon Wind Religious School
Gloria Byk Fund	Bayer/Davison Fund	Sylvia A. Cheikin Fund	Berkman Family Fund	Israel and Lillian Abramovitz Fund	
Ann and Emanuel Hirth Fund	David Sherman Foster Fund	Clare-Kramer Fund	Klemens-Wiener Fund	Sheldon and Doris Adler Fund	
Maxine & Efrem Jaffe Fund	Hochberg Family Fund	Ruth and Sidney Cohen Fund	Gordon Barshay Lassow and Jay Joshua Lassow Fund	Louis and Sadye Apter Family Fund	
Seymour B. Kaplan Fund	Jacobs Family Fund	Jack Goldberg Fund*	Esther Margulies Lessner and George C. Lessner Fund	Clare and Herbert Bernstein Fund	
Sonia and Max Karp and Anita Karp Treston Fund	Rose Jaffe Fund	F. Ruth and S. I. Kummer Fund	Jerome and Louise Nathan Fund	Raymond Bernstein Fund	
Joseph Kopman Fund	Katz-Robbins Fund	Fay and Benjamin Levy and Max Mandel Fund*	Ella and Herman Plavin Fund	Nathan Chesler Fund	
Anne and Leon Kramer Fund	Ruth Podrove Melton Fund	Aida S. Nesselroth Educational Enhancement Fund*	Plepler Family Fund	A. Elmer Diskan Fund	
Max Lundy Fund	Barney, Jean, Rachel, and Sarah Moses Education Fund	Saul and Carol Nesselroth Fund for Israel Advocacy	Jay E. Rubinow Fund	Ruben Fialkoff Fund	
Laurie Margolis Fund	Gertrude and Abraham Podrove Fund	George and Lillian Sandals Fund	Rita and David Schmerler Fund	Morris and Ann Firestone Fund	
Cantor Israel and Irene Tabatsky Fund	Podrove - Resnick Fund	Ruth and Jack Sandals Fund	Leonard Seader Fund	Rhoda Goldstein Fund	
Marsha and Samuel Yules Fund	Martin L. Rubin Fund	Rabbi Jeshaja and Hilde Schnitzer Fund	Shapiro Family Fund	Edith Gottlieb Fund	
Pauline and Isadore Zackin Fund	Nat N. and Gertrude Sturm Schwedel Fund	Saul and Rebecca Silverstein Fund	Eileen & Fred Stern Family Fund	Leo and Shirley Juran Fund	
Diane and Jeffrey Wasser Ramah Scholarship Fund	Berdine Spector Stoltz Fund	Weil-Braunsberg Fund*	Blanche and Robert Stone Fund	Kahaner Family Fund	
		Elliott and Eveleen Zimmerman Library Fund	Continuity Fund	Ethel and Nathan Kasowitz Fund	
			Program Enhancement	Marcus Family and Bula Family Fund	
			Beth Sholom B'nai Israel Operating Fund	Irving and Ethel Mehlman Rose Fund	
Religious	Youth	Maintenance/Capital Improvements	Memorial Park		
Max and Sally Glaiber and Joseph and Gertrude Snider Fund	Anna Brita Chilberg Fund	Bayer-Marlow Fund	Temple Beth Sholom Memorial Park Fund	Irma and Merwin Meridy Fund	
Howard Gold Fund	Nellie Katz Cohen Fund	Elaine and Leo Charendoff Fund	Congregation B'nai Israel Memorial Park Fund	Rita Oshinsky Fund	
Bernard and May Kahn and Eli and Rose Lerman Fund	Murray H. and Celia D. Novins Fund	David S. and Norma C. Garber Fund		Phair Family Fund	
Rubinow-Schwolsky Fund		Miriam Barshay Lassow and Herman Lassow Fund		Reichlin Family Fund	
Rebecca Ann and Herman Seidman Fund		Capital Improvement Fund		Pauline and Nathan Rubin Fund	
Irene and Henry Springer Fund				Israel and Shirley Snyder Family Fund	
Diane and Barry Weinbaum Fund				Gloria and Robert Weiss Fund	
Rabbi Leon Wind Fund				Edythe and Abraham Zubrow Fund	
Irene and Abraham Zimmerman Fund				Max Zucker Fund	

For information about establishing an Endowment Fund or leaving a bequest, contact Dr. Jeffrey Wasser [BSBIEndowment@myshul.org](mailto:BSBIEndowment@myshul.org) or Rabbi Konigsburg 860-643-9563 x101.

# Contributions from Thoughtful People

Thank you to those who support BSBI by remembering and honoring friends and loved ones with generous contributions.

Donations appearing in the newsletter may not reflect all donations received prior to publication. Listings are as current as the newsletter deadline allows.

## ANNE & LEON KRAMER FUND

*Yahrzeit* of Maxwell Kramer, beloved uncle; *Yahrzeit* of Malcolm Clare, beloved uncle, from Carol & Paul Leiman & Family

## BERDINE SPECTOR STOLTZ FUND

In memory of Kenneth Murray Spector, beloved husband of Myrna, father to Norman and Michael, and grandfather to Calvin and Max. May his memory be a blessing to all who knew and loved him, from Adrienne Pear Hopfer  
In memory of Kenneth Spector from Mrs. Miriam Kalman

## CANTOR ISRAEL & IRENE H. TABATSKY FUND

*Yahrzeit* of mother and grandmother, Irene Tabatsky, from David & Maralyn Tabatsky & families

## CHEVRA KADISHA

In appreciation for the care and support for our loved one, from the Mendelsohn family

## EILEEN AND FRED STERN FAMILY FUND

In memory of Nathan Kaplan from Eileen Stern

## ELLIOTT & EVELEEN ZIMMERMAN FUND

*Yahrzeit* of Elliott Zimmerman and his parents, from Eveleen Zimmerman

## F. RUTH & S. I. KUMMER FUND

L'Shana Tovah! from Corby Kummer

## GENERAL FUND

Get Well Mimi Kalman; In memory of Kenneth Spector from Elly and Steve Cohen

In appreciation of Rabbi Konigsburg's kindness during these difficult times; In memory of Kenneth Spector; In memory of Michael Wichman; In memory of Libby Lapidus, from Florence Cole

In honor of Ron Abrahams' 80th birthday from Joan Baron

In honor of Ron Abrahams' 80th birthday from Michael & Madeline Turk

In memory of Marilyn Rennert from Eveleen Zimmerman.

In memory of Kenneth M. Spector from Barry Jacobs

In memory of Ken Spector from Diane and Jeff Wasser

In memory of Michael Wichman from Drs. Peter & Emily Buch

In memory of Janet Koenig from Jeff and Barb Koenig

In memory of Kenneth Spector from John Rainaldi

In memory of Kenneth M. Spector from Rich and Chris Schafer

Thank you to Rabbi Konigsburg for praying for my good health from Arlene Bonilla

Thank you to Kenneth Wichman from Dottie Buch

*Yahrzeit* of Isabel Greig from Arlene Bonilla & Joel Lang

*Yahrzeit* of Sylvia Eliasoff from Edward Kloehn

*Yahrzeit* of my Aunt and Uncle, Dorothy & Philip Menchel, from Frances Licht

*Yahrzeit* of Rebecca Levi, Harold's Aunt, with fond memories from Harold & Judy Meyer

*Yahrzeit* of Renate Cohen from Kevin & Marcia Cyr  
*Yahrzeit* of Bernard Weinberg from Phyllis Levy  
*Yahrzeit* of Beryl Cantor from Yale Cantor

## HIGH HOLIDAY PLEDGE

In memory of my parents, Shirley and Edward Chaet from Sandi Phair

## JOE DAVIS FUND

In memory of Joe's brother, Bernard Davis, from Mrs. Audrey Davis

## KAHN-LERMAN TRUST FUND

In memory of May and Bernard Kahn and Eli and Rose Lerman; In memory of Ken Spector, from Manuel & Maxine Lerman

## LAURIE MARGOLIS FUND

*Yahrzeit* of Maurice Margolis from Philip & Susan Margolis

## LIVE STREAM DONATION

Live Stream donation from Gary Faber

## MIRIAM BARSHAY LASSOW & HERMAN LASSOW FUND

*Yahrzeit* of Tillie Moses from Mr. & Mrs. John E. Slattery

## NATHAN CHESLER FUND

In honor of Joyce Epstein's Realtor Par Excellence from Mrs. Sharon Chesler

## NICHUM AVAYLIM FUND

In memory of Michael Wichman, James McGee, Sally Ivaldi, Barry Baron, Victor Moses, Ellen Kloehn, Daniel Cole, Michael Norman, and Laura Lassow, from Alan & Carol Goldstein

In memory of Ken Spector, beloved husband of Myrna Spector, from Micki Starr

In memory of Robert Mendelsohn from Susan Mendelsohn

*Yahrzeit* of Ester Zucker from Eveleen Zimmerman

## PHAIR FAMILY FUND

In memory of Ken Spector from Carl & Cruz Mandell

In memory of Ken Spector; In memory of Michael Wichman from Sandra Phair

## RABBI'S DISCRETIONARY FUND

Get Well wishes to David Stern; Get Well wishes to Alan Feir; Get Well wishes to Rick Schiller; Happy Birthday to Ron Scherick on his special birthday; In memory of Michael Wichman, from Ronald & Brina Abrahams

In appreciation of Rabbi Konigsburg's eloquent High Holiday Sermons from Matthew & Randi Friedman

In appreciation of Rabbi Konigsburg's kindness and support from Susan Mendelsohn

In memory of Norman Bricker, a lifelong friend, from Joyce & Ed Epstein

# Contributions from Thoughtful People

Thank you to those who support BSBI by remembering and honoring friends and loved ones with generous contributions.

Donations appearing in the newsletter may not reflect all donations received prior to publication. Listings are as current as the newsletter deadline allows.

In memory of Kenneth Spector from Roxanne Davis  
Thank you so much for doing the kiddush at my book launch  
from Mrs. Rima Riedel  
Mazel tov Zelda Greenberg from anonymous

## REBECCA ANN & HERMAN SEIDMAN FUND

In memory of all my loved ones from Eveleen Zimmerman

## SHABBAT LUNCHEON FUND

In memory of Jerry Levine, on his first yahrzeit. He loved  
Shabbat luncheons with the BSBI *mishpacha* from Marlynn J  
Block

## SOCIAL ACTION FUND

In honor of Bat Mitzvah of Lillian O'Neil from Steven &  
Elly Cohen

## YIZKOR

A *Yizkor* donation in memory of my parents, Sylvia and Jack  
Weg from Micki Starr

# Thank you!

## 6th Annual JAZZ FESTIVAL manchester ct

### HOW CAN I HELP?

- Volunteer!!!

We can always use volunteers to help with everything from  
administration to logistics, both before and during the performance.

- Purchase a Personal ad

Personal ads can be placed in the playbill acknowledging or supporting a  
group, individual, or family. Donations can be made in the amount of \$36 or  
greater.

- Purchase a larger ad as shown on the  
"Sponsorship/Ticket Order Form"

- Place a business ad for your business or company

- Help identify businesses and/or potential sponsors that might  
be interested in program advertising or event sponsorships.

Any member who brings in \$500.00 or more in non-affiliated business ads,  
personal ads, or sponsorships will receive VIP Seating festival tickets.

Saturday  
December 4  
7:00pm  
Cheney Hall

For questions or additional information, please email: [jazzfest@myshul.org](mailto:jazzfest@myshul.org)

Sponsorship/ticket order form is available at:

[www.myshul.org/jazzfest2021](http://www.myshul.org/jazzfest2021)

Thanks in advance for your support!

-The Jazz Festival Team

# November 2021 Calendar

Sunday	Monday	Tuesday	Wednesday	Thursday	Friday	Saturday
	<b>1 (26 Cheshvan)</b> 7:00pm Mincha/ Maariv	<b>2 (27 Cheshvan)</b> 12:00pm Lunch & Learn 7:00pm Mincha/ Maariv 7:30pm BSBI Academy	<b>3 (28 Cheshvan)</b> 7:00pm Mincha/ Maariv	<b>4 (29 Cheshvan)</b> 4:30pm Hebrew school Gr 3-7 7:00pm Mincha/ Maariv	<b>5 (1 Kislev)</b> <b>Rosh Chodesh Kislev</b> 5:22pm Candle Light- ing 6:00pm Friday Ser- vices	<b>6 (2 Kislev)</b> 10:00am Shabbat Services 6:24pm Havdalah
					Sunset: 5:40pm	Sunset: 5:39pm
<b>7 (3 Kislev)</b> 9:00am Hebrew school K-7 9:00am Morning Minyan 9:30am Brother- hood Breakfast & Speaker	<b>8 (4 Kislev)</b> 7:00pm Mincha/ Maariv 7:30pm Sisterhood/ Hadassah Book Club	<b>9 (5 Kislev)</b> 12:00pm Lunch & Learn 1:30pm Knit & Kvetch Annual Dis- tribution 7:00pm Mincha/ Maariv 7:30pm BSBI Academy	<b>10 (6 Kislev)</b> 7:00pm Mincha/ Maariv	<b>11 (7 Kislev)</b> <b>Veterans Day</b> 7:00pm Mincha/ Maariv	<b>12 (8 Kislev)</b> 4:14pm Candle Light- ing 6:00pm Friday Ser- vices	<b>13 (9 Kislev)</b> 10:00am Shabbat Services 5:16pm Havdalah
					Sunset: 4:32pm	Sunset: 4:31pm
<b>14 (10 Kislev)</b> 9:00am Hebrew school K-7 1:30pm Sisterhood Paid Up Member Event	<b>15 (11 Kislev)</b> 7:00pm Mincha/ Maariv	<b>16 (12 Kislev)</b> 12:00pm Lunch & Learn 7:00pm Mincha/ Maariv 7:30pm BSBI Acad- emy	<b>17 (13 Kislev)</b> 7:00pm Mincha/ Maariv 7:30pm BOD Board Meeting	<b>18 (14 Kislev)</b> 4:30pm Hebrew school Gr 3-7 7:00pm Mincha/ Maariv	<b>19 (15 Kislev)</b> 4:08pm Candle Light- ing 6:00pm Israel Scholar Weekend Shabbat Services & Lecture	<b>20 (16 Kislev)</b> 10:00am Israel Scholar Weekend Shabbat Services & Lecture 10:00am Junior Congregation 5:11pm Havdalah
					Sunset: 4:26pm	Sunset: 4:26pm
<b>21 (17 Kislev)</b> 9:00am Sisterhood Bake Sale 9:00am Hebrew school K-7 10:00am Israel Scholar Weekend Lecture 4:00pm Interfaith Service	<b>22 (18 Kislev)</b> 7:00pm Mincha/ Maariv	<b>23 (19 Kislev)</b> 12:00pm Lunch & Learn 7:00pm Mincha/ Maariv 7:30pm Sisterhood Board Meeting 7:30pm BSBI Acad- emy	<b>24 (20 Kislev)</b> 7:00pm Mincha/ Maariv	<b>25 (21 Kislev)</b> Office Closed <b>Thanksgiving Day</b> 7:00pm Mincha/ Maariv	<b>26 (22 Kislev)</b> Office Closed 4:04pm Candle Light- ing 6:00pm Friday Night Services	<b>27 (23 Kislev)</b> <b>Shabbat Mevar- chim</b> 10:00am Shabbat Services 5:07pm Havdalah
					Sunset: 4:22pm	Sunset: 4:22pm
<b>28 (24 Kislev)</b> <b>Erev Chanukah</b> 10:00am Sister- hood Adventure Walk 5:30pm Hanukkah 1st Candle Light- ing @ BSBI - Brotherhood	<b>29 (25 Kislev)</b> <b>Chanukah</b> 5:30pm Hanukkah 2nd Candle Lighting @ BSBI - Social Action 7:00pm Mincha/ Maariv	<b>30 (26 Kislev)</b> <b>Chanukah</b> 12:00pm Lunch & Learn 5:30pm Hanukkah 3rd Candle Lighting @ BSBI - Sister- hood 7:00pm Mincha/ Maariv 7:30pm BSBI Academy				

Please note that the *Chai Lights* calendar dates are as of the date of publishing. Any schedule changes after this time will be posted on the online calendar at [myshul.org](http://myshul.org) and included in the weekly announcements. These sources will have the most up to date information on events.



BSBI has been given the opportunity to accept donations of vehicles through a partnership with Vehicles For Charity to process donated

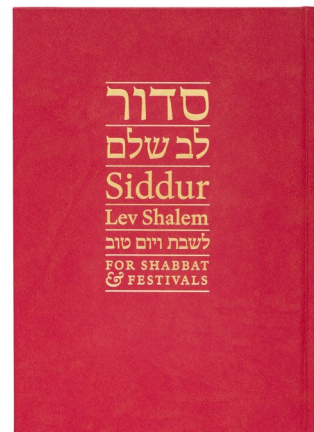
vehicles. Consider donating your unwanted vehicle in support of BSBI. It is easier and faster than selling it on your own, and you may qualify for a tax deduction! Donors say it is a satisfying way to make a larger donation than they normally could.

Vehicles accepted by this program include: unwanted car, truck, boat, motorcycle, RV or recreational vehicles.

For more information go to:

<https://www.vehiclesforcharity.org>

We have now made the switch to the new *Siddur Lev Shalem*! Similar to the *Machzor Lev Shalem* we use on Rosh Hashana and Yom Kippur, *Siddur Lev Shalem* includes informational side notes and extra readings on each page to help everyone get more out of Shabbat *te-phillot* (prayer). We are now offering opportunities to dedicate these siddurim in honor of people or events in our lives or in memory of loved ones. A siddur can be dedicated for just \$50 a book. If you would like to see a copy of the new siddur, they are available for inspection at the synagogue.



#### Beth Olam Cemetery

The lock at Beth Olam has been replaced and now no key is required. The combination is 1818.

There is a reminder near the lock in case you have forgotten the combination.



Please follow the directions below to use the new lock:

- The lock is located under the black weatherproof cover
- Pull the lock over the black weatherproof cover
- Turn the number to 1818-line them up with the red line
- Lock will pull apart
- When done, reattach the cable to lock it
- Turn at least one number to secure lock
- Replace the lock under the black weatherproof cover

#### Don't Forget to Check Out MyShul.org!

Our website has all the latest information on upcoming events, class and event registration, secure online donations, and shopping opportunities that support BSBI!

If you would like to send in any pictures, videos, or upcoming event information, please email [programming@myshul.org](mailto:programming@myshul.org).



Beth Sholom B'nai Israel

#### Support BSBI with AmazonSmile!

AmazonSmile is a simple and automatic way for you to support BSBI every time you shop, at no cost to you. When you shop at [smile.amazon.com](https://smile.amazon.com), you'll find the exact same low prices, vast selection and convenient shopping experience as at Amazon.com, with the added bonus that Amazon will donate a portion of the purchase price. For detailed instructions for how to sign up, visit our website at:

[www.myshul.org](https://www.myshul.org).

**amazon**smile  
You shop. Amazon gives.



Simple, Affordable, Jewish Funerals.

 **BLUMENSTEIN**  
FUNERALS

860-243-6000 | [blumensteinfunerals.com](http://blumensteinfunerals.com)

## See Your Ad Here and Support BSBI!

For more information, contact Tova Haley at [programming@myshul.org](mailto:programming@myshul.org)  
or call 860-643-9563 x100

For news of Israel, there's  
Haaretz, Maariv, and the  
Jerusalem Post.

For news of  
Manchester and Vernon,  
there's only the  
Journal Inquirer

Proudly Supported by the



Jewish Federation  
OF GREATER HARTFORD

### Home Bound?

### Prefer at Home Foot Care?



Manchester Podiatry Center, P.C.

1-888-804-7180  
by appointment only

House Calls

Call Dr. Kenneth Wichman

and schedule a convenient  
visit at your home.

[www.ctfootdoctor.com](http://www.ctfootdoctor.com)



STANLEY FALKENSTEIN  
Attorney at Law

FALKENSTEIN, MEGGERS,  
PAUL & ROBINSON, P.C.

113 East Center Street  
Manchester, CT 06040-5243  
[www.113law.com](http://www.113law.com)  
[sfalkenstein@113law.com](mailto:sfalkenstein@113law.com)

phone (860) 649-2865  
(860) 649-5278  
fax (860) 649-2073  
(860) 645-8207

Joel L. Rosenlicht, D.M.D.  
Ryaz Ansari, D.D.S.



Rosenlicht & Ansari  
Implant Dentistry, Oral and Facial Surgery Center

*The smart choice for:*

- \* Dental Implants  
~Teeth in a Day
- \* Wisdom Teeth
- \* Snoring

483 Middle Turnpike West  
(860) 649-2272

[www.Jawfixers.com](http://www.Jawfixers.com)



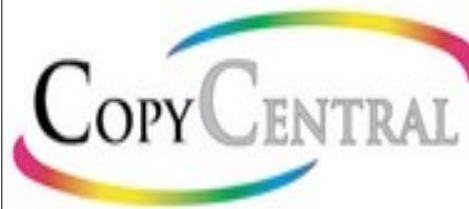
JOYCE EPSTEIN  
Owner/Broker

111 Main Street  
Manchester, CT 06042

Email: [Joyce@JoyceEpstein.com](mailto:Joyce@JoyceEpstein.com)

[www.JoyceEpstein.com](http://www.JoyceEpstein.com)

INTEGRITY KNOWLEDGE SERVICE



RONALD A. DEL VECCHIO, D.D.S.  
DIPLOMATE AMERICAN BOARD OF PERIODONTICS  
PRACTICE LIMITED TO PERIODONTICS AND IMPLANTS

VERNON PROFESSIONAL BUILDING  
281 HARTFORD TURNPIKE, RT. 30  
VERNON, CONNECTICUT 06066



Manchester      Glastonbury  
317 Highland Street      1320 Manchester Road  
860-646-4277      860-659-1717

Farmington      Suffield  
204 Main Street      68 Bridge Street  
860-674-9536      860-668-9660

• [www.highlandparkmarket.com](http://www.highlandparkmarket.com) •

# Lynch Motors Inc.

LYNCH



TOYOTA  
179-235 TOLLAND TPKE  
(860) 646-4321

MANCHESTER, CT



- Retirement Income Planning
- Divorce Financial Planning
- College Savings Plans
- Fee based Money Management
- Annuities
- Life Insurance

Contact: Jay Bigman

[jay@jaybigman.com](mailto:jay@jaybigman.com)

860-644-9834

[www.jaybigman.com](http://www.jaybigman.com)

Securities by Licensed Individuals Offered  
Through Securities America Inc. A Registered  
Broker/Dealer. Member FINRA, SIPC

# BECK & ELDERGILL, P.C.

## LAWYERS

Employment - Personal Injury - Domestic Relations  
447 Center Street, Manchester, CT 06040 (860) 646-5606

LAW OFFICES OF  
PAUL L. RUBIN

PAUL L. RUBIN  
Attorney at Law

135 East Center Street • Manchester, CT 06040  
Tel. 860-647-9210 • Fax 860-647-9265  
E-Mail: attyrubin@aol.com



### THE TROPHY SHOP

—Since 1972—  
Plaques, Trophies and Engraving Services

[www.thetrophyshop.biz](http://www.thetrophyshop.biz)

(A Wraith Industries LLC Company)

214 Hartford Turnpike • Vernon • CT • 06066  
sales@thetrophyshop.biz • (860) 871-0867

YOUR COMMUNITY.  
YOUR FEDERATION.



IF YOU OR SOMEONE YOU KNOW has had a child introduced to Judaism through the PJ Library or sought consultation about improving the quality of life for an aging parent at Jewish Family Services of Greater Hartford, then you know how important the Annual Campaign is to our community.

EVERY YEAR, THROUGH THE ANNUAL CAMPAIGN, countless lives are saved, cared for, reached out to and rebuilt.

WITH ONE GIFT, YOU CAN MAKE A WORLD OF DIFFERENCE in many of the causes important to you—all at once. With Federation's community based giving wherever the need is greatest, we address it because of donations from donors like you.



Jewish Federation  
OF GREATER HARTFORD

[www.JewishHartford.org](http://www.JewishHartford.org)

f | [www.facebook.com/JewishHartford](http://www.facebook.com/JewishHartford)  
t | @JewishHartford

Philip M. Partney 860-463-8173  
President



## PMP Profix LLC

Small jobs our specialty

- Home Improvements
- Leaky Faucets
- Carpentry Repair
- Custom Shelving
- Dryer Vent Cleaning, and more!

Contact Phil, he can solve your problem!

WWW.PMP Profix.com E-mail: philippartney@pmprefix.com  
CT HIC REG# 0632587 Fully Insured

## HEBREW FUNERAL ASSOCIATION, INC.

*A traditional way for all Jews since 1898*

"A True Act of Kindness" - חסד של אמת

Leonard J. Holtz, Executive Funeral Director

*Second Generation Serving Greater Hartford*

906 Farmington Ave., West Hartford, CT

Tel. (860) 224-2337

Cell (860) 888-6919

P.O. Box 370302, West Hartford, CT 06137

*Pre-Paid Funeral Trusts*

## TotalVision Eyecare

*Medical eye care • Contact lenses • Custom eyewear*

Lance I. Alpert, O.D.

*Doctor of Optometry*

362 Middle Turnpike West  
Manchester, CT 06040  
(860) 649-3311

[www.totalvisioneyecare.com](http://www.totalvisioneyecare.com)  
[dralpert@totalvisioneyecare.com](mailto:dralpert@totalvisioneyecare.com)  
Check us out on Facebook!

STUART J. HORN, D.M.D.  
GEORGE S. CAYE, D.D.S.

COMPREHENSIVE DENTISTRY

599 Main Street | Telephone: (860) 647-1565  
Manchester, CT 06040 | Fax: (860) 643-2796

Beth Sholom B'nai Israel  
400 Middle Turnpike East  
Manchester, CT 06040

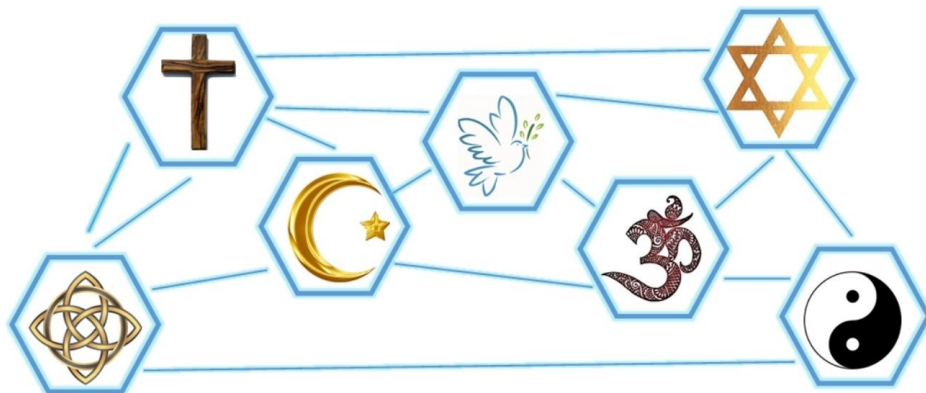
Address Service Requested

Time Sensitive Material

Please Do Not Delay

THE NOVEMBER *CHAI LIGHTS* DEADLINE IS **NOVEMBER 12<sup>TH</sup>**

PLEASE SEND ALL ARTICLES TO **ADMIN@MYSHUL.ORG**



**WITH THE PARTICIPATION OF CLERGY  
FROM ALL OVER MANCHESTER**

**BSBI HOSTS:**

# *Interfaith Service*

Sunday, November 21, 2021 @ 4:00PM

This annual event is also a food drive for the local food pantry.

Please make your donation this year directly to MACC Charities at [macc-ct.org](http://macc-ct.org)