



# STAFF, CLERGY AND BOARD OF BSBI WISH YOU A HAPPY AND HEALTHY NEW YEAR!



## TEMPLE TOPICS

High Holiday Pages	3-5
Rabbi & Co-Presidents	6
BSBI Community	7
RLWRS Update	8
Rabbi Richard Plavin Library	9
August Celebration Dates	10
Sisterhood Speaks	11-13
Brotherhood Corner	14

Leave a Legacy	15
The Endowment Foundation	16
Contributions from Thoughtful People	17-20
August Calendar	21
Announcements	22-24
Ads from Our Sponsors	25-27
BSBI's 10th Annual Taste of Honey	Back Page

**BETH SHOLOM B'NAI ISRAEL**  
400 Middle Turnpike East, Manchester, CT 06040  
(860) 643-9563 [www.myshul.org](http://www.myshul.org)

**Clergy**

Rabbi: Randall J. Konigsburg

Rabbi Emeritus: Richard J. Plavin

**Staff**

Office Manager: Judy Sawtelle

Marketing Coordinator: Tova Haley

Bookkeeper: Shari Haley

Education Director: Rabbi Alan Lefkowitz

Maintenance Specialist: Dave Pastula

**BSBI Board of Directors**

Co-Presidents: Dawn & Jack Steigelfest

Executive Vice President: Russ Benblatt

Co-Vice Presidents of Finance: Alan & Hope Igdalsky

Co-Vice Presidents of Membership: Sally Ivaldi Z"L & Merle Cohen

Vice President of Ritual: Steve Cohen

Co-Vice Presidents of Education: Rebecca Rumbo/Bea Brodie

Vice President of Fundraising: Ken Wichman

Vice President of Administration: Ron Abrahams

Vice President of Buildings & Grounds: Ed Reilly

Vice President of Cemeteries: Liza Mandel

Recording Secretary: Steven Wollins

Immediate Past President: Phil Margolis

Sisterhood Representative: Brina Abrahams

Brotherhood Representative: Glenn Blumenstein

Board of Trustees Representative: Gordon Brodie

Member At Large: Steve Cohen

Member At Large: Jay Bigman

Member At Large: Spin Zucker

Co-Chairs, Personnel: Gayle Block/Mike Turk

Chair, Social Action: Carol Hatch

Chair, Youth Activities: Ilene O'Neil

Chair, Adult Programming: Debbie Benblatt

Legal Counsel: Bruce Beck

**Services**

**Monday through Thursday: 7:00 PM**

**Friday: 6:00 PM**

**Saturday: 10:00 AM**

All service times are as listed above unless otherwise noted in the calendar.

The entire community is welcome to attend any of our services. Services

Monday-Thursday are virtual. Friday and Saturday services are hybrid.

Zoom information will be included in emails.

You may contact us via e-mail at:

**Rabbi Konigsburg:** rabbenu@myshul.org

**Judy Sawtelle:** admin@myshul.org

**Tova Haley:** programming@myshul.org

**Shari Haley:** accounting@myshul.org

**Rabbi Alan Lefkowitz:** RLWRSDirector@myshul.org

AFFILIATED WITH THE UNITED SYNAGOGUE OF CONSERVATIVE JUDAISM

**Call the Rabbi!**

Rabbi Konigsburg visits the local hospitals on a regular basis. An important part of his duties is to bring comfort and healing to those who are sick. Due to privacy laws, the hospitals can't tell him if one of our members has been admitted. He could be just down the hall, but if he doesn't know someone is there, he will not know to make a visit.

Please call the Rabbi if you or someone you know is in the hospital so a timely visit can be made: **860-643-9563**

 Find us on  
**Facebook**

<https://www.facebook.com/myshul/>

**Upcoming Events!**



**Due to COVID-19, all events  
are  
subject to change.**



**Please visit [www.myshul.org](http://www.myshul.org) for all updates on  
upcoming events.**

---

**Sunday, August 8**

11:00 am: Manchester Hadassah's Summer  
Schmooze

**Tuesday, August 10**

1:30 pm: Knit & Kvetch

**Wednesday, August 18**

7:30 pm: BSBI Board of Directors Meeting

**Sunday, August 22**

11:30 am: Yard Goats Faith & Family Day

**Saturday, August 28**

9:00 pm: Selichot Service

**Sunday, August 29**

10:00 am: Sisterhood Adventure Walk

11:00 am: Sisterhood Brunch

**Tuesday, August 31**

7:30 pm: Sisterhood Board Meeting

---

**Looking Ahead:**

**Wednesday, September 1**

8:30 am: AAMGT Golf Tournament

**Monday, September 6**

*Labor Day*

*Erev Rosh Hashana*

**Tuesday, September 7**

*Rosh Hashana*

**Wednesday, September 8**

*Rosh Hashana*

---

**Condolences to:**

Debra & Benjamin Carlson, Michael & Lisa  
Ivaldi & their entire family on the loss of Sally  
Ivaldi.

Marcia McGee on the loss of her husband  
and Lindsay and Michaela on the loss of their  
father, Jim McGee.

# High Holiday Pages

## Rosh Hashana

### Monday, September 6, 2021

Candle Lighting 6:57 PM  
**Evening Service** 7:00 PM  
*(Registration Required)*

### Tuesday, September 7, 2021

**Morning Service** 8:30 AM – 12:30 PM  
*(Registration Required)*

Shacharit Service 8:30 AM  
 Torah Service 9:30 AM  
 Shofar 10:30 AM

**Family Service** 11:00 AM  
*(Registration Required)*

**Tashlich** 5:00 PM  
*(Registration Required)*

This year we are meeting again at The Old Woodbridge Farm at Manchester Green (behind the pizza restaurant). Parking on the street or in the lot behind the Manchester Senior Center. Woodbridge Farmstead, 495 East Middle Turnpike.

**Evening Service** 6:00 PM – 7:00 PM  
*(Registration Required)*

Mincha/Maariv 6:00 PM  
 Candle-Lighting 7:59 PM

### Wednesday, September 8, 2021

**Morning Service** 8:30 AM – 12:30 PM  
*(Registration Required)*

Shacharit Service 8:30 AM  
 Torah Service 9:30 AM  
 Shofar 10:30 AM

## Yom Kippur

### Sunday, September 12, 2021

**Kever Avot** 10:00 AM  
*At Beth Sholom Memorial Park,  
 Manchester, CT*

### Wednesday, September 15, 2021

**Kol Nidre** 6:30 PM  
*(Registration Required)*

Candle-Lighting 6:43 PM  
 We will not have candles for lighting at the synagogue this year. Please light before you leave home with the intention that the holiday will not begin for you until 6:43 pm

### Thursday, September 16, 2021

**Morning Service** 9:00 AM – 3:00 PM  
*(Registration Required)*

Shacharit 9:00 AM  
 Torah Service 10:30 AM  
 Yizkor 12:15 PM

**Family Service** 11:00 AM  
*(Registration Required)*

**Conclusion of Yom Kippur** 4:45 PM – 7:41 PM  
*(Registration Required)*

Mincha 4:45 PM  
 Neilah 6:20 PM  
 Maariv 7:20 PM  
 Sounding of Shofar 7:41 PM



# High Holiday Pages

## Selichot at BSBI

On Saturday, August 28<sup>th</sup>, beginning at 9:00 pm, we will be participating in a national Selichot Service sponsored by the Rabbinical Assembly.

Selichot is the official start of the Yamim Noraim, the Days of Awe, the High Holy Day period on the Jewish calendar. Traditionally, it was held at midnight to show that we wanted to begin the cycle of penitence and forgiveness at the first possible moment.

There will be a Selichot service and many options for study about topics that relate to teshuva, tzedakah and hesed. You must register for this program. The link will be sent in the weekly emails.

## Tashlich - Casting Away our Sins

Tashlich, Tuesday, September 7<sup>th</sup> is at 5:00 pm the first day of Rosh Hashana. This year we are meeting again at The Old Woodbridge Farm at Manchester Green (behind the pizza restaurant). Our members and their guests are invited to observe this custom of symbolically throwing away our sins as we cast breadcrumbs on the water. Registrants will meet at the stream on the farm at 5:00 pm. Social distancing is required. There is street parking in front of the farm and plenty of parking behind the Manchester Senior Center right next door.



If you have never participated in this ritual, this is a great year to start. Tashlich (meaning "casting off") is a practice on Rosh Hashana to go to a natural body of flowing water such as a river or brook and throw some breadcrumbs or similar food item into the water symbolically casting off our sins of the previous year. We invite you and your family to join us and participate in this special service. Please bring some breadcrumbs to "cast on the water".

## Kever Avot

It is a long-standing tradition to visit the graves of family members during the days between Rosh Hashana and Yom Kippur. This visit is called Kever Avot, literally "Parents' Graves."

At this holiday time it is appropriate to remember those who are now gone from our family with this visit. We will hold this service at our cemetery in Manchester on Wednesday, September 12<sup>th</sup> at 10:00 am. Everyone, no matter where their loved ones may be buried, will have the opportunity to have their loved ones remembered at this service.



## Lulav and Etrog Sets



To fully observe the holiday of Sukkot, you will want to own a set of *arbah minim*, the four species (a set of Lulav and Etrog), which will be blessed each morning of the holiday to remind us of God's bounties. We will place a group order and have them available at BSBI to pick up before the Sukkot holiday. Send your check to our office to reserve your set. PRICE \$40 (subject to change based on supply). Please contact the office to order your set. We must have your order before Rosh Hashana to ensure delivery before Sukkot.

# High Holiday Pages

## Sukkot

Sukkot is the joyous culmination of the holiday season. It is the third of the three Pilgrimage Festivals. The other two are Pesach and Shavuot. While Pesach is overwhelmingly a home festival, and Shavuot is mainly a synagogue holiday, Sukkot has observances that make it both home and synagogue centered.

If you would like to build a Sukkah at your home, which is a great way to fully observe the holiday with your family, please contact the Rabbi for instructions. You can check out the website [www.sukkot.com](http://www.sukkot.com) for excellent kits.

Services for Sukkot will be held according to the following schedule. The *arbah minim (lulav and etrog)* will be used at the morning service on Monday September 20<sup>th</sup>, and the blessing is said every other morning at home.

- Monday, September 20<sup>th</sup>:** Sukkot service 6:00 pm
- Tuesday, September 21<sup>st</sup>:** Morning service 10:00 am-12:30 pm  
Mincha/Maariv service 6:00 pm
- Wednesday, September 22<sup>nd</sup>:** Morning service 10:00 am-12:30 pm  
No evening service

## Hoshana Rabba

Join us on Monday, September 27<sup>th</sup> at 7:00 am for the unique conclusion of the season of repentance with our Hoshana Rabba service. You will need to order a bundle of "hoshanot" for \$5, by Yom Kippur. Contact the BSBI office if you would like to order. You will use your lulav and etrog as well.

## Shemini Atzeret

- Monday, September 27<sup>th</sup>:**
- Shemini Atzeret: Evening service 6:00 pm
- Tuesday, September 28<sup>th</sup>:**
- Shemini Atzeret: Morning service 10:00 am-12:30 pm
- Simchat Torah: Crazy Hat & Mask service 6:00 pm
- Wednesday, September 29<sup>th</sup>:**
- Simchat Torah: Morning service 10:00 am-1:00 pm  
No evening service  
Havdalah 7:18 pm

*L'Shana Tova!*

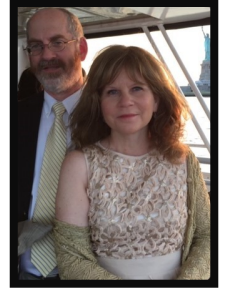
### *Words from the Co-Presidents*

Back in April, we sent out a message to the Congregation advising that the “building and grounds of BSBI are open for use by synagogue organizations and for synagogue meetings and events,” subject to reasonable safety restrictions. We followed shortly thereafter with a message that BSBI was returning to in-person Shabbat worship.

Sometimes we wonder whether everyone received those messages. The summer tends to be a slower time for activity at BSBI, zoom meetings can be very convenient, and we cannot dispute anyone’s hesitance to avoid crowds and put their safety first. But we know many of you are out and about in your daily lives. Wearing a mask inside the building may be an inconvenience, but it is a minor one. We are concerned that some may have just lost the habit of coming to shul or forgotten the joy of greeting people in person.

So, as BSBI’s activity level increases and the High Holidays approach in early September, let us offer a personal invitation to each of you to come to services, to use the building and grounds for your meetings, and to re-engage in person with our community. BSBI exists as a place for us to gather for prayer, for education, for good works, and for social activities. Remote accessibility will always be with us, but is not a full substitute for being here.

We hope that you are enjoying your summer, and that you will increasingly incorporate BSBI into your plans as life returns to some semblance of normalcy. We look forward to seeing you.



***Jack & Dawn Steigelfest, Co-Presidents***

### **Faith, Hope, Prayer**

“I Hate you!” If you have children who were once teenagers, you know that phrase well. As we grow through childhood, we form our likes and dislikes which will somehow come out as either love or hate. Usually we grow out of it, seeing the different “greys” of life, and understanding that we live longer if we can moderate our feelings. But not always. Sometimes, even as adults, we fall into the “Love it or Hate it” situation, and when we do, the Hate part fills us with anger and emotion.

The weird part of all of this is that Love and Hate are not opposites. Basically, they are the same thing; both imply that you have strong feelings about something. The opposite is “Indifference.” When you don’t care, you don’t have strong feelings. But there has to be some way to understand our strong feelings because if we don’t they will lead us away from the person we want to be. It is hard to be a mensch if we are always sliding off into hate.

Rabbi Nachman of Breslov tells a story of a dream he had. He saw a man walking in a storm, unaware that the path he was on was very narrow with fire on one side and ice on the other. No matter which way he might fall, there was danger. The Rabbi tried to warn the man, but his mouth was sealed shut and he could not say a word. Suddenly, there was a flash of lightning and the man could see the danger he was in and lost his balance as he tried to stay on the narrow path. With great effort, the Rabbi tore open his mouth and screamed at the man over the sound of the storm, “Fly, you can fly!!” — Rabbi Nachman had strange dreams.

Our lesson here is that both love and hate are the fire and ice of living. As Rabbi Nachman teaches, we have to maneuver ourselves on the narrow path between them. We can have different opinions; we can have discussions and disputations, and neither side must change their minds. Our differences are usually about different ways we have come to see the world. What is important is not changing minds but seeing other points of view. We can’t let ourselves get angry about opinions that are different than our own. We must find the balance, so that everyone feels accepted and understood. That does not mean our opinions and ideas are not right, only that we need to make room for others.

This applies to politics and to the news as well. We will fall into the fire or ice if we allow our emotions to take over our minds. To keep in balance, we must understand why people feel as they do. It is hard because sometimes we believe others have been given information that is false; that someone is trying to deceive them into doing something not in their best interest. Yelling does not help. Hating does not help. Fighting does not help. Only being able to understand someone else can bring them to want to understand you. Sometimes this takes time, but it’s always worth the effort. Often the disparities are very minor, and it takes only small changes to make the difference. We can know only if we take the time to listen, understand, and consider the ideas and opinions of others.

It is our concern for others, our understanding of their points of view and our consideration of who they are and where they come from that make the real difference in the world. Hate takes us nowhere. Understanding is what makes friendship, peace, and progress possible. It is what can make us fly.



***Rabbi Randall Konigsburg***



## Manchester Hadassah's Summer Schmooze

Sunday, August 8<sup>th</sup>, 2021

11:00 am-2:00 pm

Join us at this get-together to schmooze with our friends on

Coventry Lake at:

Patriots Park Lodge

172 Lake St. Coventry, CT

Bring a dairy appetizer or dessert to share and a canned good or item for the local food pantry.

There is a deck, a playscape, and a sandy beach. Don't forget your beach chairs, bathing suits and towels!



Open to Manchester Hadassah members and their friends and family. RSVP to Teri Norman

At [teri.norman225@gmail.com](mailto:teri.norman225@gmail.com) or text at 860-729-9770

### Catch-Up Food Drive Update

Thanks to all who so generously contributed to our Food Drive. We were able to donate a great deal of non-perishables to both of the food pantries. We donated the remainder of the basil plants to the Spruce Street Farmers' Market in Manchester.

Thanks to everyone who participated!



### Jewish History 101

23 Av - 23 Elul

- 27 Av** - S. A. Bierfield was lynched by the Klan on this date in 1868 in Franklin, TN. It was the first Klan lynching of a Jew in the United States.
- 1 Elul** - The World Zionist Organization was founded at the First World Zionist Congress in Basel, Switzerland in 1897.
- 6 Elul** - Yahrzeit of Rabbi Gerson Cohn, Chancellor of the Jewish Theological Seminary
- 14 Elul** - The cornerstone of Congregation Shearith Israel in New York was laid on this date in 1729 on Mill Street. It was the first synagogue structure in North America.
- 23 Elul** - Rabbi Jacob Frankel from Philadelphia, the first American rabbi to serve in the U.S. Chaplaincy, was appointed a military hospital chaplain on this date in 1862.

# RLWRS Update

## Rabbi Leon Wind Religious School's Registration is OPEN!

Children Grades K-7 can now register for RLWRS

Classes begin on September 12<sup>th</sup>, so don't wait!

Registration forms can be downloaded here:

<https://www.myshul.org/rabbi-leon-wind-religious-school.html>

Any Questions? Contact the Education Director at

[RLWRSDirector@myshul.org](mailto:RLWRSDirector@myshul.org)



### A Word from Rabbi Alan:

We may be in the middle of summer, but we at the Rabbi Leon Wind Religious School are busily preparing for next school year! Before you know it, the High Holy Days will be upon us: our Selichot Service will take place on Saturday evening August 28<sup>th</sup>, and Rosh Hashanah begins Monday evening, September 6<sup>th</sup>.

**Religious school begins Sunday, September 12<sup>th</sup> for all classes.**

Let's all prepare by taking a moment to reflect on how we are living our lives.

Here is a story to help us begin.

#### The Brick:

A successful businessman was driving through a neighborhood, driving a bit too fast in his new Jaguar. He was watching for kids darting out from between parked cars and slowed down when he thought he saw something. It wasn't a kid. Instead, a brick smashed into his car door!

He slammed on the brakes, jumped out of the car, and grabbed the kid who had thrown the brick. "What was that all about? What the heck are you doing?!" he yelled at the boy. "You dented my new car!"

The boy sobbed, "Please, mister, I'm sorry, I didn't know what else to do! I threw the brick because no one else would stop!

"It's my brother. He rolled off the curb and fell out of his wheelchair and I can't lift him up. Can you please help me? He's too heavy for me."

When the driver understood the situation, he felt ashamed. He had put more importance on his new car than on helping someone in need. He lifted the young man back into his wheelchair and checked to be sure that he wasn't hurt. "Thank you and God bless you," said the grateful child. The man then watched the little boy push his brother down the sidewalk toward their home.

The man never did repair the car door. He kept the dent to remind him not to go through life so fast that someone must throw a brick at you to get your attention.

God whispers in your soul and speaks to your heart. Sometimes when you do not have time to listen, God must throw a "brick" at you. It is your choice: Listen to the whisper—or wait for the brick.

As we approach the High Holidays, let's think: What can we do next year to be more helpful to those in need? How can we pay attention so that we see their need for help before they have to throw a brick?

**RLWRS Education Director  
Rabbi Alan Lefkowitz**

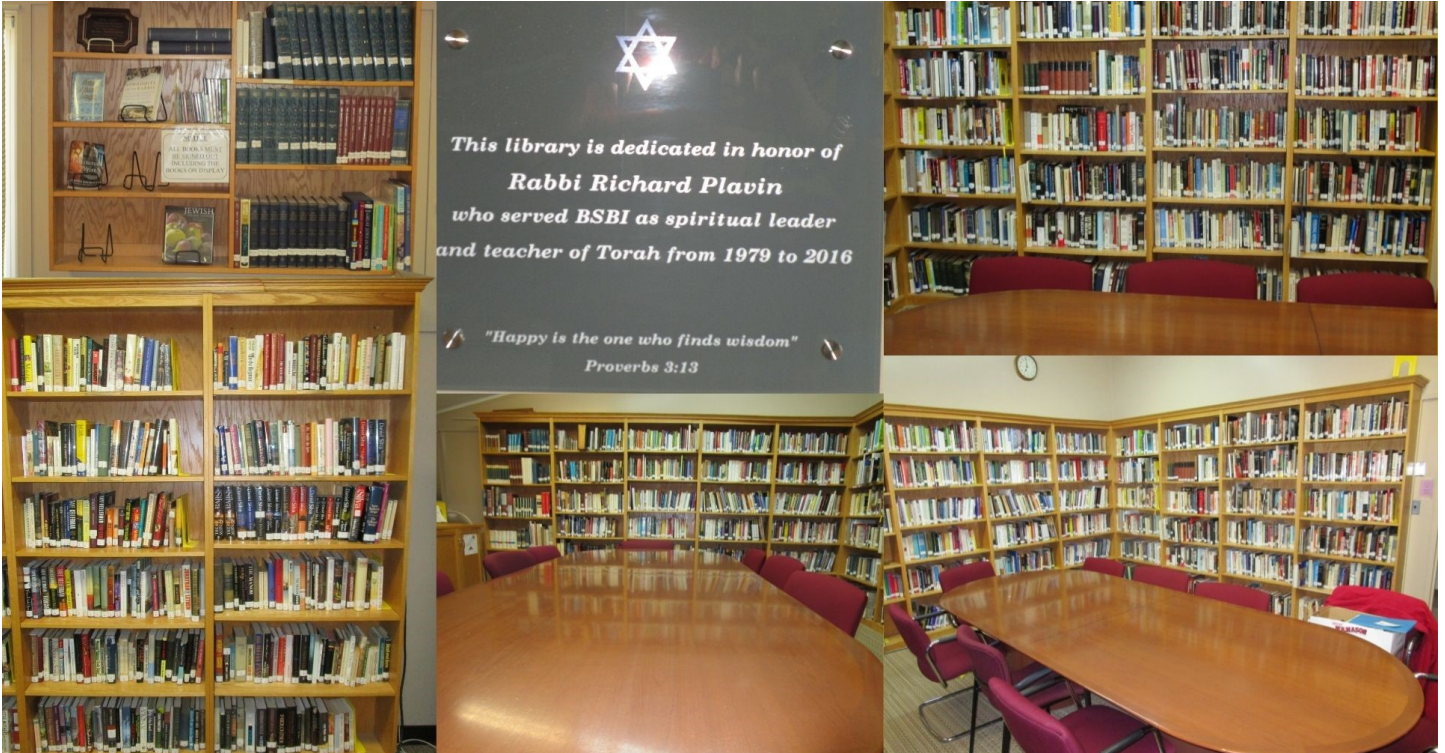


# Rabbi Richard Plavin Library

David Alter, Librarian

The Library is open! Come on in or check our updated online catalog by visiting the BSBI website.

<https://www.myshul.org/library.html>



## Social Action Committee

Happy New Year!



The Social Action Committee will once again be holding the High Holiday Food Drive. We are grateful to be able to be back in the synagogue for High Holy Day services, and we ask that you remember the less fortunate members of our communities by contributing groceries which will be delivered to our local food pantries. There will be a shopping cart in the lobby where the groceries can be deposited.

We are also grateful to the volunteers who tended Jessie's Garden, which is providing fresh produce to our local food pantries. The garden is healthy and productive this summer.

If you are interested in participating in the planning of any social action activities, we will be having a meeting in October (date to be determined). Watch for further information in the BSBI announcements.

## Important: Update Your Contact Information!

- \* Have a new cell number or gave up your landline?
- \* Want to be added to our e-mail list to get our bi-weekly announcements, sad news notifications and other important information related to the congregation?
- \* Think you signed up to get e-mails but haven't received any?
- \* Planning on moving or getting a new e-mail address?
- \* Have a child who has gone off to college and would like to keep up to date with life at BSBI?

Please notify Tova Haley directly regarding **ANY** changes or issues by calling 860-643-9563 ext. 100 or by sending an e-mail to [programming@myshul.org](mailto:programming@myshul.org).

**REMEMBER:** We cannot reach you if our records are not up to date!



**ShopRite**  
**Manchester ShopRite**  
 214 Spencer Street  
 Owned & Operated by  
 The Cohen Family

- ✓ Great Quality
- ✓ Great Prices
- ✓ Great People

Monday thru Saturday 6am to 11pm  
 Sunday 6am to 10pm  
 (860) 645-3240

---

**ShopRite Super Coupon** \$5.00 OFF  
 All Shoppers Must Present Coupon To Receive Discount

**100 OFF**  
 With This Coupon  
 Towards The Purchase of  
 \$5.00 or More On Any  
**Empire Fresh  
 or Frozen Items**

With this coupon and an add'l. purchase of \$5.00 or more (excluding items prohibited by law). Limit one per family. Good at any ShopRite. Effective thru Dec. 31, 2021

## Birthdays



Ronald Scherick 8/2	Susan Rubin 8/11	Harriet Beede 8/21
Ellen Chase 8/5	JoAnn Itzkowitz 8/13	Eric Miller 8/21
Ken Bernstein 8/5	Yale Cantor 8/14	Russell Benblatt 8/25
Craig Cinquemani 8/5	Alan Itzkowitz 8/14	Alexander Hauer 8/25
Gloria Naftali 8/6	Lea Schmerler 8/14	Jordana Benblatt 8/26
Amie O'Brien 8/6	Phillip Axler 8/15	Audrey Davis 8/27
Sharon Haight 8/8	Cruz Mandell 8/15	Eileen Stern 8/28
Jason Miller 8/8	Blanche Ross 8/18	Merle Lassow 8/29
Paul Norman 8/9	Emma Luxemburg 8/18	Marcus Luxemburg 8/29
Jacob O'Neil 8/10	David Burstein 8/19	Carol Alter 8/30
Irma Carter 8/11	Beverly Russo Byk 8/20	Avram Berger 8/31

## Anniversaries

Alan & Donna Feir 8/02	Gordon & Beatrice Brodie 8/20
Ronald & Susan Scherick 8/03	Michael & Brenda Bula 8/20
Alan & Carol Goldstein 8/07	Robert & Donna Caplin 8/21
Joel & Irene Milzoff 8/08	Paul & Arlene Norman 8/23
Phillip & Elaine Axler 8/10	Glenn & Rebecca Hauer 8/25
Jack & Lynn Cohen 8/10	Daniel & Rochelle Levine 8/25
Richard & Elise Carlton 8/10	Randall & Elaine Nelson 8/28
Richard & Amy Schiller 8/11	Jeffrey & Sue Pitler 8/30
Theodore & Barbara Zupnik 8/11	Herbert & Beverly Byk 8/30
Stephen & Rachel Donnell 8/17	Alan & Hope Igdalsky 8/31



Have a *simcha* you want to share with the congregation?  
 Make sure to notify Tova at [programming@myshul.org](mailto:programming@myshul.org) so  
 she can include it in the bulletin!

***If we have overlooked a special date please contact us at: 860-643-9563 ext. 100  
 so that we may celebrate it in the future.***



## Sisterhood Speaks

*Mimi Kalman, Editor*



### ***What's Ahead for Sisterhood?***

**Tuesday, August 10, 1:30 pm**  
Knit & Kvetch

**Sunday, August 29, 10:00 am.**  
Please note the new time!  
Sisterhood adventure Walk (socially distanced)

**Sunday, August 29, 11:00 am—3:00 pm**  
Sisterhood Summer Brunch

**Tuesday, August 31, 7:30 pm**  
Sisterhood Zoom Board Meeting

Anytime: Yoga with Adriene on YouTube.

### **Time to Pay Sisterhood Annual Dues**

With the New Year comes a new year for Sisterhood. We do hope that you will once again (or for the first time) join us and send your dues check, for \$36.00, made out to BSBI Sisterhood, to Diane Keyser, 99 Hollister Street, Manchester, CT.

Sisterhood does so much for our synagogue, from Kiddushim on Shabbat to camp scholarships and many programs in between, we do hope you will support us. Please see the enclosed flyer.

### **Share an Oneg**

On June 26<sup>th</sup> the pulpit flowers were sponsored by the BSBI Sisterhood Board in honor of Lucas Carlson on his Bar Mitzvah and in memory of Sally Ivaldi.

If you would be interested in sponsoring the pulpit flowers on Rosh Hashanah or Yom Kippur, please call me.

**Mimi Kalman**  
mimrk524@gmail.com, 860-649-3890

### **Sisterhood Summer Brunch**

Come enjoy conversation and company on August 29th, from 11:00 am to 3:00 pm, at the home of Brina Abrahams, 10 Vinetta Drive, Vernon, CT.

Please RSVP no later than August 22nd to Maddy Turk, mikemaddy@aol.com, 860-875-7323.

### **Knit & Kvetch**

Knit and Kvetch is meeting in person again. Our next meeting will be Tuesday, August 10<sup>th</sup> at 1:30 PM. Please follow Temple protocols (masks and social distancing.)

If you would like to do charity work but can't knit or crochet, please come. We can teach you. We have yarn for you to use.

We are always looking for new people to Knit and Kvetch with us. We are looking forward to seeking everyone in person again!

If you have any questions you can email me at Iranefink@gmail.com or call me at 860-649-6551.

**Anne Fink**

### **Sisterhood Gift Shop: Your Source for all your Simchot**

Our new proprietors are ready and willing to help you with your Gift Shop purchases. Remember this year the High Holidays are very early, so call us if you need a Honey Pot or something special for a Yom Tov gift.

We will be having a gift shop tag sale table during the BSBI Taste of Honey picnic, Sunday, Sept. 12<sup>th</sup>. Come and get bargains to prepare for our grand reopening.

**Harriet Beede**  
hmbeede@gmail.com, 860-305-8711

**Brenda Lerner**  
brenler@cox.net, 860-643-9700



## Sisterhood Speaks Continued

### Adventure Walk

Hi, Walkers. We'll be walking again on Sunday, August 29<sup>th</sup>, at 10:00 am. So come with us, wear a mask, and we'll keep our distance and get some exercise. Stretching our legs should feel great after weeks of partial quarantine. We will definitely see lovely scenery and enjoy being out in the fresh air!

Family members and spouses are welcome to join, socially distanced from those not in the family bubble.

So meet us in BSBI's parking lot by 10:00 am. We

will decide where we are going, and off we will go!

**Margie Partney**



### YOGA ON YOUR OWN

Yoga with "The Queen of Pandemic Yoga" Adriene (Mishlar)! So named by the *NY Times*, and she was featured on the TV program "Live With Kelly and Ryan." So now you not only have Margie's recommendation, but also the "Times" and Kelly and Ryan!

**What:** Yoga (no cost to you)

**When:** Anytime

**Where:** In your home

**Why:** A 10-40 minute session can help with anxiety, calming, feeling rejuvenated

**How:**

-Access YouTube on your Computer, iPad, Phone (you can also download the YouTube app to your phone\*)

-Search "Yoga" or "Yoga with Adriene" (I recommend that instructor)

- There will be a multitude of results to choose from:

Yoga for Stress Relief

Wake up Yoga

Flexibility

Yoga for Kids

- Have fun and relax!!

\*If you have a SMART TV, Google Chromecast can be used to display the YouTube Video from your phone to TV.

**Margie Partney**

### Torah Fund Cards

Condolences to Susan Mendelsohn and family in memory of her husband and their father

Mazel tov to Mimi Kalman on her 85<sup>th</sup> birthday

Mazel tov to Brina Abrahams on her 80<sup>th</sup> birthday and best wishes for Brina and Ron Abrahams on their anniversary

From: Judy and Harold Meyer.

Condolences to Gail Freedman in memory of her sister, Nihla Lapidus

Condolences to Debra Carlson and family in memory of Debra's mother, Sally Ivaldi

Get well to Tova Haley

From: Cal and Elaine Vinick.

Condolences to Gail Freedman in memory of her sister, Nihla (Libby) Lapidus,

From: Lynn and Jack Cohen.

Condolences to Gail Freedman in memory of her sister, Nihla (Libby) Lapidus

Get well to Sally Ivaldi

Condolences to Debra Carlson and family in memory of Debra's mother, Sally Ivaldi

From: Paula Finkelstein.

Condolences to Debra Carlson and family in memory of Debra's mother, Sally Ivaldi

From: Eveleen Zimmerman.

Condolences to Debra Carlson and family in memory of Debra's mother, Sally Ivaldi

From: Sylvia Cheerman.

Mazel tov to Steve and Elly Cohen in honor of the marriage of their granddaughter Madison to Dan

From: Susan and Ron Scherick.

Get well to Tova Haley

From: Mimi Kalman.

Mazel tov to the grandparents, Steve and Elly Cohen, in honor of the marriage of their granddaughter Madison to Dan

From: Joan Baron.

To order cards for all occasions contact our Torah Fund Card Chairperson

Lynn Cohen at (860-298-0457) or [cohenlynn334@gmail.com](mailto:cohenlynn334@gmail.com)

BETH SHOLOM B'NAI ISRAEL SISTERHOOD  
MANCHESTER, CONNECTICUT

HOPE YOU CONTINUE YOUR MEMBERSHIP THIS YEAR

Dear Friends,

I hope you are having a wonderful summer and stay safe. I am looking forward to a new year and the many exciting events planned through Sisterhood. Sisterhood is a wonderful organization that is involved in a number of projects to help the temple, our community, and the greater Jewish community. I hope I can count on you to support our efforts and welcome you to become more involved in Sisterhood.

Fifteen dollars of the dues goes to our national organization, Women's League for Conservative Judaism, with the remainder staying with us. Thank you in advance for your prompt response.

Sincerely,

Diane

---

2021-2022 Sisterhood Dues

\$18.00 New Members

\$36.00 Returning Members

Payable by: August 15, 2021

Please make the check payable to:

Beth Sholom B'nai Israel Sisterhood

Send the check to:

Diane Keyser

99 Hollister St.

Manchester, CT 06042

Please send the bottom portion of this form with your dues.

---

Name \_\_\_\_\_

Spouse's name (if applicable) \_\_\_\_\_

Address \_\_\_\_\_

\_\_\_\_\_

Phone Number \_\_\_\_\_

Email address \_\_\_\_\_

- We do most of our communication by email.

- Next time we re-publish our Blue Book, we will be including email addresses as well as phone numbers. Let us know if it is OK to publish it there.

Yes \_\_\_\_ No \_\_\_\_

# Brotherhood Corner

## Update of Manchester Brotherhood in Action (BIA)

As you may know, the BSBI Brotherhood is a member of Manchester BIA, a group of area fraternal organizations that was formed in 1967. BIA raises funds to support area families of children with life-altering diseases or disabilities through its annual benefit.

A breakfast is held each year at the Manchester Masonic Temple. At the February 2020 breakfast, \$7400 was raised to benefit two such families. There was no breakfast held in February 2021 due to COVID-19. The committee considered some alternative options but decided it was best to hold off until next year given the COVID uncertainties.

BIA is still active and vibrant! The committee will be making plans for our February 2022 Community Breakfast. We look forward to meeting again. Please watch for our traditional announcement early in 2022.

Thank you for all of your continued support of this important community outreach effort.

With the best of health,

BSBI Brotherhood Representatives to the Manchester BIA Committee.

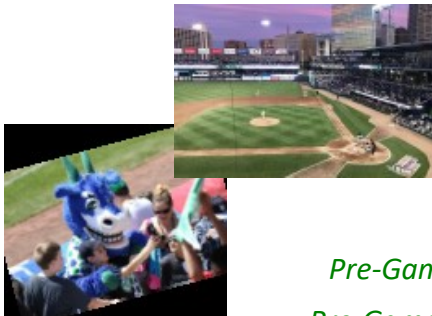


## BSBI Brotherhood Presents Faith & Family Day at Dunkin' Donuts Park

**Sunday, August 22, 2021**

**Game Time: 1:05 pm | Gates Open: 11:35 am**

*New Hampshire Fisher Cats (Toronto Blue Jays) vs Hartford Yard Goats (Colorado Rockies)*



### Featuring:

*Reserved Seating*

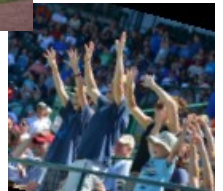
*Official Group Welcome*

*Kosher Food Options Available*

*Post-Game Kids-Run-the-Bases Activity*

*Pre-Game Ceremony Honoring Local Community Leaders*

*Pre-Game Forum on Faith Led By Yard Goats Players & Staff*



## Blackledge Country Club

**September 1, 2021**

**Hole-in-One Contest for a New Car** sponsored by **LYNCH TOYOTA**

### TOURNAMENT DAY SCHEDULE:

8:30-10:00 Registration, Breakfast, and Raffle Entry

10:00 Shotgun Start

10:00 - 5:00 Tournament & Contests

5:00 Dinner

Registration, Sponsorships & Volunteer Information Available  
Online at: [aamgtgolf.com](http://aamgtgolf.com)



In support of





# Leave a Jewish Legacy



## IRA Assets and Qualified Charitable Distributions

BSBI would like to encourage charitable donations, to help our congregants optimize their charitable giving and to reach their charitable goals. On behalf of the Endowment Board of Trustees I would like to review some of the benefits of gifting Qualified Charitable Distributions (QCDs) to the Endowment. The QCDs may also be used to pay Synagogue dues as well as contribute to the Hineni Society.

## Donation of "Qualified Charitable Distributions" (QCD)

In legislation at year end 2016, Congress made permanent qualified charitable distributions (QCDs) from individual retirement accounts.

## What are QCDs?

A QCD permits direct transfers to a qualified charity (or charities) totaling up to \$100,000 annually of tax-deferred IRA savings. QCDs offer advantages over taking a taxable IRA distribution and then contributing the proceeds of that distribution to a charity. That's because taxable IRA distributions must be included in adjusted gross income. Importantly, QCDs automatically satisfy required minimum distributions (RMDs) for the year when the QCD is made. That's a real advantage for a charitably minded IRA owner who doesn't depend on some or all of the RMD for living expenses.

## What are important things to know about QCDs?

Only individuals who've attained age 70 ½ or older on the date of distribution may make QCDs. The charitable organization must be an organization that qualifies for a charitable income tax deduction of an individual. The Beth Sholom B'nai Israel Synagogue and the BSBI Endowment qualify as such organizations. The BSBI Endowment and Synagogue will be required to provide the same contribution acknowledgement to the owner of the IRA required claiming a charitable tax deduction. Failure to obtain the acknowledgement will quash the QCD. QCDs may be made from any IRA or individual retirement annuity, but not from a simplified employee pension, a simple retirement account, or an inherited IRA. Among other benefits, the use of QCDs for charity may reduce taxable income, reduce state and federal tax, reduce taxation of social security, and reduce supplemental IRMMA payments to Medicare parts B and D. Individuals and couples with low as well as high incomes may benefit by contributing QCDs to charity.

## Examples of using QCDs for charitable giving

There are several attractive options for the use of QCDs for charitable giving. For example, one can use the QCD to pay Synagogue dues and contribute to Hineni. Another example of optimizing the use of QCD is to establish a **perpetual endowment** fund. By making a QCD donation to the Endowment of BSBI, the donor may create a \$25,000 endowment for BSBI. This endowment may be given over the course of a number of years to reach the level necessary to provide perpetual support of \$1000 to **Hineni**. By adding to the donation annually the donor could reach \$45,000 over a number of years. This amount would support a **perpetual Hineni donation at the \$1800** per year level. Details of further possibilities and arrangements for payment can be obtained from the Endowment members or via email noted below. Since the use of QCDs for charitable giving can have specific tax advantages, the donor should consult their tax advisor prior to making a QCD contribution. Some plans require significant lead time to process the paperwork, so advanced planning may be necessary.

For further information, contact a member of the Endowment Committee. You may reach out to the BSBI Endowment at [BSBIEndowment@myshul.org](mailto:BSBIEndowment@myshul.org) or directly to Roy Filkoff or Jeff Wasser. Remember to discuss this and all other tax matters with your tax advisor before taking any action.

Sincerely,  
Jeff Wasser, MD  
President of the BSBI Endowment

Will this be the year to leave YOUR Jewish legacy?



*Do you have a will?  
Have you considered a bequest to BSBI?*

Join those members of our Jewish community who have come together to build endowments and legacies to secure a bright Jewish future for BSBI.



For more information, please email:  
[BSBIEndowment@myshul.org](mailto:BSBIEndowment@myshul.org)

# Endowment Foundation

Scholarships	Rabbi Leon Wind Religious School	Adult Education	Community	General Endowment Fund	<b>The Time is Now, The Need is Great!</b>  Endowments are an opportunity for each of us to provide for our synagogue on a continuous basis by creating a permanent tribute to our values and principles.  Our synagogue is here for you as you experience life's greatest joys and greatest challenges.  <i>The Endowment Foundation</i>  *These funds can also be used in Rabbi Leon Wind Religious School
Gloria Byk Fund	Bayer/Davison Fund	Sylvia A. Cheikin Fund	Berkman Family Fund	Israel and Lillian Abramovitz Fund	
Ann and Emanuel Hirth Fund	David Sherman Foster Fund	Clare-Kramer Fund	Klemens-Wiener Fund	Sheldon and Doris Adler Fund	
Maxine & Efrem Jaffe Fund	Hochberg Family Fund	Ruth and Sidney Cohen Fund	Gordon Barshay Lassow and Jay Joshua Lassow Fund	Louis and Sadye Apter Family Fund	
Seymour B. Kaplan Fund	Jacobs Family Fund	Jack Goldberg Fund*	Esther Margulies Lessner and George C. Lessner Fund	Clare and Herbert Bernstein Fund	
Sonia and Max Karp and Anita Karp Treston Fund	Rose Jaffe Fund	F. Ruth and S. I. Kummer Fund	Jerome and Louise Nathan Fund	Raymond Bernstein Fund	
Joseph Kopman Fund	Katz-Robbins Fund	Fay and Benjamin Levy and Max Mandel Fund*	Ella and Herman Plavin Fund	Nathan Chesler Fund	
Anne and Leon Kramer Fund	Ruth Podrove Melton Fund	Aida S. Nesselroth Educational Enhancement Fund*	Plepler Family Fund	A. Elmer Diskan Fund	
Max Lundy Fund	Barney, Jean, Rachel, and Sarah Moses Education Fund	Saul and Carol Nesselroth Fund for Israel Advocacy	Jay E. Rubinow Fund	Ruben Fialkoff Fund	
Laurie Margolis Fund	Gertrude and Abraham Podrove Fund	George and Lillian Sandals Fund	Rita and David Schmerler Fund	Morris and Ann Firestone Fund	
Cantor Israel and Irene Tabatsky Fund	Podrove - Resnick Fund	Ruth and Jack Sandals Fund	Leonard Seader Fund	Rhoda Goldstein Fund	
Marsha and Samuel Yules Fund	Martin L. Rubin Fund	Rabbi Jeshaja and Hilde Schnitzer Fund	Shapiro Family Fund	Edith Gottlieb Fund	
Pauline and Isadore Zackin Fund	Nat N. and Gertrude Sturm Schwedel Fund	Saul and Rebecca Silverstein Fund	Eileen & Fred Stern Family Fund	Leo and Shirley Juran Fund	
Diane and Jeffrey Wasser Ramah Scholarship Fund	Berdine Spector Stoltz Fund	Weil-Braunsberg Fund*	Blanche and Robert Stone Fund	Kahaner Family Fund	
		Elliott and Eveleen Zimmerman Library Fund	Continuity Fund	Ethel and Nathan Kasowitz Fund	
			Program Enhancement	Marcus Family and Bula Family Fund	
			Beth Sholom B'nai Israel Operating Fund	Irving and Ethel Mehlman Rose Fund	
Religious	Youth	Maintenance/Capital Improvements	Memorial Park		
Max and Sally Glaiber and Joseph and Gertrude Snider Fund	Anna Brita Chilberg Fund	Bayer-Marlow Fund	Temple Beth Sholom Memorial Park Fund	Irma and Merwin Meridy Fund	
Howard Gold Fund	Nellie Katz Cohen Fund	Elaine and Leo Charendoff Fund	Congregation B'nai Israel Memorial Park Fund	Rita Oshinsky Fund	
Bernard and May Kahn and Eli and Rose Lerman Fund	Murray H. and Celia D. Novins Fund	David S. and Norma C. Garber Fund		Phair Family Fund	
Rubinow-Schwolsky Fund		Miriam Barshay Lassow and Herman Lassow Fund		Reichlin Family Fund	
Rebecca Ann and Herman Seidman Fund		Capital Improvement Fund		Pauline and Nathan Rubin Fund	
Irene and Henry Springer Fund				Israel and Shirley Snyder Family Fund	
Diane and Barry Weinbaum Fund				Gloria and Robert Weiss Fund	
Rabbi Leon Wind Fund				Edythe and Abraham Zubrow Fund	
Irene and Abraham Zimmerman Fund				Max Zucker Fund	

For information about establishing an Endowment Fund or leaving a bequest, contact Dr. Jeffrey Wasser [BSBIEndowment@myshul.org](mailto:BSBIEndowment@myshul.org) or Rabbi Konigsburg 860-643-9563 x101.

# Contributions from Thoughtful People

Thank you to those who support BSBI by remembering and honoring friends and loved ones with generous contributions.

Donations appearing in the newsletter may not reflect all donations received prior to publication. Listings are as current as the newsletter deadline allows.

## ANNE & LEON KRAMER FUND

In memory of Anne & Leon Kramer, beloved parents and grandparents; *Yahrzeit* of Solomon Kramer, beloved grandfather; *Yahrzeit* of Meyer Clare, beloved grandfather from Carol & Paul Leiman & Family

## BERDINE SPECTOR STOLTZ FUND

*Yahrzeit* of Leah Spector from Kenneth & Myrna Spector

## CANTOR ISRAEL & IRENE H. TABATSKY FUND

*Yahrzeit* of Cantor Israel Tabatsky, our father and grandfather from Maralyn Tabatsky

## CONTINUING EDUCATION

In memory of Judge Jonathan J. Kaplan from Anonymous  
In memory of Natalie Levine; Thank you for including me in the congregation's service and making me feel at home from Renee Shifrin

## DAVID SHERMAN FOSTER MEMORIAL FUND

In memory of Dorothy Foster from Samuel & Janet Foster

## EDITH GOTTLIEB FUND

*Yahrzeit* of Marc Gottlieb, Ada Fineberg, Martha Sweifach from Lori Gottlieb

## ELAINE & LEO CHARENDOFF FUND

In memory of Jonathan J. Kaplan from Eli Karson

## GENERAL FUND

For the speedy recovery of Arnie Dashefsky; Wishing Myrna Spector a speedy recovery from Manuel & Maxine Lerman  
Get Well Fred Pappagallo; *Yahrzeit* of Dad and Brother, Phillip and Herbert Lang, from Arlene Bonilla & Joel Lang  
Happy Anniversary Ron & Brina Abrahams, Mike & Maddy Turk, Steve & Elly Cohen, and Rabbi & Michelle Konigsburg from Marilyn Lassow  
Happy Birthday to Brina Abrahams; Happy Anniversary to Ron & Brina Abrahams; In memory of Jon Kaplan, beloved husband of Linda Kaplan; In memory of Sally Ivaldi, beloved mother and grandmother, from Mrs. Joan Baron  
In appreciation of Neil Brooks, who personifies friendship; In memory of Jonathan Kaplan. Thank you to Rabbi Konigsburg for the support you have offered Jon and Linda during the past few years from R. M. & Sharon Burde  
In honor of the engagement of Kate Neuhaus & Josh Branfman; In honor of Steve Cohen's recognition as Keeper of the Flame 5781; In memory of Jonathan Kaplan

from Drs. David & Ellen Neuhaus

In honor of Lucas Carlson's Bar Mitzvah from Harold & Judy Meyer

In honor of the birth of Jerry Creem's grandson Nathan, from Jay & Susan Stoppelman

In honor of Jonathan Kaplan from Kenneth & Myrna Spector

In honor of Jack & Lynn Cohen's grandson's graduation; In

honor of Bunny & Harv Weiner's grandson's Bar Mitzvah;

In memory of Sally Ivaldi; In memory of Nihla (Libby)

Lapidus, Gail Freedman's sister; Mazel tov to Marilyn

Lassow for her niece, Rebecca's new book from Mrs. Merle Lassow

In memory of Arthur Lassow on his *yahrzeit* from Merle Lassow & Family

In honor of Ronni Zoback's grandson Micah, from Randall & Elaine Nelson

In honor of Brina Abrahams' special birthday; *Yahrzeit* of Sylvia Scherick, mother of Ron Scherick from Ronald & Susan Scherick

In memory of Sally Ivaldi from Alan & Hope Igdalsky

In memory of the Honorable Jonathan Kaplan, a sincere and wonderful man, from Alfred & Donna Kausch

In memory of Sally Ivaldi from Anne Herman

In memory of Jonathan Kaplan from Anne Yarusewicz

In memory of Sally Ivaldi from Anne and Ira Fink

In memory of Sally Ivaldi from Arnold & Diane Keyser

In memory of Jonathan Kaplan from Arnold & Hermia Aronson

In memory of Judge Jonathan Kaplan from Barbara Dworsky

In memory of Sally Ivaldi from Blanche Ross

In memory of Judge Jonathan Kaplan from Brenda Burde

In memory of Sally Ivaldi from Carl & Cruz Mandell

In memory of Phillip Davison from Carol Zander

In memory of my mother Peggy Ludlum from Cathy Ludlum

In memory of Jonathan Kaplan from Daniel & Shelley Salamon

In memory of Jonathan Kaplan from Devra Baum

In memory of William Goober from Diane & Mitchell Wurmbrand

In memory of Sally Ivaldi from Dr. Kenneth Wichman

In memory of Jonathan Kaplan; *Yahrzeit* of Betty Cohen from Elly and Steve Cohen

In memory of my dear friend, Sidney Keller; In memory of my dear friend, Dr. Alan Krupp, from Evelyn Lang



# Contributions from Thoughtful People

Thank you to those who support BSBI by remembering and honoring friends and loved ones with generous contributions.

Donations appearing in the newsletter may not reflect all donations received prior to publication. Listings are as current as the newsletter deadline allows.

In memory of our dear friend, Jon Kaplan, from Gary and Susan Cramer  
 In memory of Sally Ivaldi; Mazel tov to Rima & David Riedel on the birth of their new grandson from Hanna Marcus  
 In memory of Hon. Jonathan Kaplan from Harvey & Diane Desruisseaux  
 In memory of Sally Ivaldi from Herb and Ellie Flink  
 In memory of Natalie Zimmerman from Howard & Linda Grad  
 In memory of Jonathan Kaplan from I. David & Lynne Marder  
 In memory of Sally Ivaldi. I worked with Sally for over 20 years and was also a friend out of work. Such a lovely and caring lady. She will be missed by many from Jean Thomas  
 In memory of Sally Ivaldi from Jeffrey & Diane Wasser  
 In memory of Jonathan Kaplan from Joel & Gail Sokolov  
 In memory of Muriel Kravetz, Elise Carlton's mother;  
*Yahrzeit* of my father, Philip Hausknecht from Joel & Irene Milzoff  
 In memory of Jonathan Kaplan from Joel Davidson  
 In memory of Jonathan Kaplan from Joseph & Irna Gomez  
 In memory of Nihla (Libby) Lapidus from Joseph Fleischmann  
 In memory of Judge Jonathan Kaplan from Kahan, Kerensky, Capossela, LLP  
 In memory of Sally Ivaldi; In memory of Jonathan Kaplan; In memory of Robert Mendelsohn; *Yahrzeit* of Milton Krasne from Michael & Maddy Turk  
 In memory of a dear friend, Sally Ivaldi, from Mrs. Audrey Davis  
 In memory of Ben Miller from Mrs. Ellen Marmer  
 In memory of Natalie Zimmerman from Mrs. Miriam Kalman  
 In memory of Sally Ivaldi from Ms. Trudy Singer  
 In memory of Jonathan Kaplan from Nancy & John Mulcahy  
 In memory of Jonathan Kaplan from Neil & Sandi Brooks  
 In memory of Jonathan Kaplan from Neil Atlas  
 In memory of The Honorable Jonathan Kaplan. He was a caring man who always welcomed me into his home. While there I witnessed his love of family and reverence of God. The seders at the Kaplan home are a treasured memory from Patricia Tansey  
 In memory of Robert David Mendelsohn from R. Paul & Sandra Maidment  
 In memory of Jonathan Kaplan, a wonderful friend and colleague from Richard & Kathleen Dyer  
 In memory of Jonathan Kaplan from Robert Rodner  
 In memory of Jonathan Kaplan from Sally & Ed Gettler  
 In memory of Jon Kaplan; *Yahrzeit* of Pauline Frucht and Rita Roth; *Yahrzeit* of Lori H from Sharon and Barry Haight  
 In memory of Jonathan Kaplan from Stanley & Lois Falkenstein  
 In memory of Freda Levett from Stanley Israel

In memory of the Honorable Jonathan Kaplan from Steven Barbin  
 In memory of Sally Ivaldi from Stuart & Jenny Rabinowitz  
 In memory of Judge Jon Kaplan. Chris and I were saddened to hear of Judge Kaplan's passing. He officiated at our wedding in July 1999. Judge Kaplan guided Chris and me through the kind of wedding we wanted. He was so thoughtful about our interfaith marriage. He will be missed.  
 from Tami & Chris Maxwell  
 In memory of Sally Ivaldi, a loving mother who raised our ever loyal Theta sister, Debra, from The Pitt Thetas- Amy Oden-Bitner, Allison Resetco Gruver, Colleen Bauer Lexer, Erika Newcomer Shehata, Kristin Harts Johnson, Lori Matvey Dugan, Marci Mostoller Hirsh, and Tina Sellers Brunson  
 In memory of Jonathan Kaplan from Toby Karlyn  
 In memory of Jonathan Kaplan from William & Mary McGurk  
 In memory of Sandra Gamzon on the occasion of her *yahrzeit* from William Gamzon  
 In memory of our dear friend Jonathan Kaplan from Zabelle Greenblatt  
*Yahrzeit* of Saul Silverstein from Barbara Silverstein  
*Yahrzeit* of Mae Wichman from David Wichman  
*Yahrzeit* of Elsie Joseph from Harvey Joseph  
*Yahrzeit* of Ida Bobrow; *Yahrzeit* of Gloria Bobrow Byk from Herbert & Beverly Byk  
*Yahrzeit* of Sam Friedman; *Yahrzeit* of Irene Fielding from Irving Friedman  
*Yahrzeit* of Paul Norman Rosenlicht from Joel & Doreen Rosenlicht  
*Yahrzeit* of brother Dr. Henry Cutler and father Frank Cutler from Milly Malkin  
*Yahrzeit* of Elliot Bennett from Monroe Moses  
*Yahrzeit* of father, Harold David Brody and grandfather, Eli Zingesser from Mr. & Mrs. Barry Resnick  
*Yahrzeit* of Susan Engelson; *Yahrzeit* of Hymen Engelson; *Yahrzeit* of Mary Hurwitz; *Yahrzeit* of Rose Rittow from Mr. David Engelson  
*Yahrzeit* of Martin Rubin from Paul Rubin  
*Yahrzeit* of Julius Lieberman from Robert Lieberman  
*Yahrzeit* of father, Leo Susnitzky, from Sally Ivaldi  
*Yahrzeit* of Barney Gorman from Samuel Gorman  
*Yahrzeit* of my father, Fred Horn, from Stuart & Esther Horn

## GORDON BARSHAY LASSOW & JAY JOSHUA LASSOW FUND

In memory of Sally Ivaldi; *Yahrzeit* of Gordon Lassow from Marilyn Lassow  
*Yahrzeit* of Miriam Lassow from Mr. & Mrs. John E. Slattery

# Contributions from Thoughtful People

Thank you to those who support BSBI by remembering and honoring friends and loved ones with generous contributions.

Donations appearing in the newsletter may not reflect all donations received prior to publication. Listings are as current as the newsletter deadline allows.

## JOE DAVIS FUND

*Yahrzeit* of Frances Davis, Joe's dear mother, and Benjamin Garber, my dear father; *Yahrzeit* of Joe Davis from Mrs.

Audrey Davis

*Yahrzeit* of Frances Breslau; *Yahrzeit* of Sam Breslau from William & Susan Breslau

## JOSEPH KOPMAN FUND

*Yahrzeit* of Helen Kopman from Judy Kopman-Fried

## KAHN-LERMAN TRUST FUND

Yizkor for May & Bernard Kahn; Yizkor for Rose & Eli Lerman; In memory of Victor Moses; In memory of Sally Ivaldi; In memory of Barry Baron; In memory of Natalie Zimmerman; In memory of Louise Nathan; In memory of Ellen Kloehn; In memory of Jon Kaplan; In memory of Mark Ross; In memory of Edmay Tardif; In memory of Vivian Zeligman; In memory of Sylvia Weg; *Yahrzeit* of Rose Lerman from Manuel & Maxine Lerman

## LEONARD SEADER FUND

Happy Anniversary Rabbi & Michelle Konigsburg; Happy Birthday to Herb Byk; Happy Birthday to Margery & David Gussak; In memory of Sally Ivaldi from Sissy Seader; Happy Birthday to Sissy Seader; Happy Birthday to Elaine Charendoff from Mrs. Blanche Stone

*Yahrzeit* of Leonard Seader from Michael Seader

## LIBRARY FUND

In honor of Diane Keyser being named Woman of Distinction; In memory of Dave Alter's beloved Aunt Marion Silverstein; In memory of Nihla Lapidus, Gail Freedman's beloved sister from Herb and Ellie Flink

## MARTIN L. RUBIN MEMORIAL FUND

*Yahrzeit* of Martin Rubin from Dr. Burton Rubin

*Yahrzeit* of Martin Lewis Rubin from Jon and Viviann Rubin

## MAX ZUCKER FUND

In memory of my parents, Barbara & Nathan Rosen, my sister Penni Rosen, niece Jessica Meyers and aunt & uncle Belle & Max Zucker from Gail Vaccaro

## NATHAN CHESLER FUND

*Yahrzeit* of Uncle Nathan Chesler from Holly Gwyn Zabitz

*Yahrzeit* of Nathan Chesler, beloved husband from Mrs. Sharon Chesler

## NELLIE KATZ COHEN FUND

Happy Anniversary Andrea Seader & Sam Harrison; Happy Birthday to Elizabeth Werby; Happy Birthday to Doris Biller; Happy Birthday to Gayle Trabitz; Happy Birthday to Elaine Charendoff; In memory of Betty Ellis; In memory of Sandy Plepler; *Yahrzeit* of Eleanor Karp from Sissy Seader

## NICHUM AVAYLIM FUND

Happy Birthday to Brina Abrahams from Marilyn Lassow; In appreciation to Rabbi Konigsburg; In honor of Rabbi Richard & Lisa Plavin's special anniversary; In memory of Sally Ivaldi; Mazel tov to Cruz & Carl Mandell on the birth of their twin granddaughters to Michelle and Rob Adler from Drs. Peter & Emily Buch; In honor of Brina's birthday and their anniversary from Elly and Steve Cohen

In honor of Diane Keyser being named Woman of Distinction; In memory of Jonathan Kaplan; In memory of Robert Mendelsohn; In loving memory of Larry Medin from Ronald & Brina Abrahams

In memory of Sally Ivaldi from Harold & Judy Meyer; In memory of Sally Ivaldi from Mrs. Sharon Chesler; *Yahrzeit* of Nicholas Elefant from Emily Buch

## PHAIR FAMILY FUND

In memory of my special Aunt Marge Doris Block; In memory of my dear friend Sally Ivaldi from Sandi Phair

## RABBI EMERITUS' DISCRETIONARY FUND

In appreciation of the occasion of the mitzvot of the mezzuzahs from Charles Berger; In memory of Honorable Jonathan Kaplan from Anonymous

## RABBI'S DISCRETIONARY FUND

In loving memory of Miles Singer on the occasion of his *yahrzeit* from Trudy Singer

For the complete recovery of Ronni Roback; In memory of Sally Ivaldi from Drs. David & Ellen Neuhaus; Thank you for including my mom and cousin on the Mi Sheberach list from Renee Shifrin; Happy Birthday to Rabbi Konigsburg. Love, Renee, Jeff & Suzanne from Renee & Jeff Shifrin

In honor of the Bat Mitzvah of our granddaughter Delilah Miller from Stan and Emily Miller

In honor of Rabbi & Michele Konigsburg for the opportunity to join them and the congregation for Shabbat Services from Toby Klein

# Contributions from Thoughtful People

**Thank you to those who support BSBI by remembering and honoring friends and loved ones with generous contributions.**

Donations appearing in the newsletter may not reflect all donations received prior to publication. Listings are as current as the newsletter deadline allows.

In memory of Robert Mendelsohn from Arnold & Diane Keyser

In memory of Sally Ivaldi from Florence Cole

In memory of Natalie Levine from Howard & Linda Grad

In memory of Jonathan Kaplan from Judy & Hal Levy

In memory of Robert Mendelsohn from Kenneth & Sarah Hillner

In memory of Sally Ivaldi from Kimberly Schraeder

In memory of Jonathan Kaplan; In memory of Muriel Kravetz from Laurence & Jayne Cohen

In memory of Natalie Levine from Manuel & Maxine Lerman

In memory of Robert Mendelsohn from Marilyn Lassow

In memory of Robert Mendelsohn from Mary Jo Benton Lee

In memory of Sally Ivaldi from Nanci Fox

In memory of Robert Mendelsohn from S. M. Faltemier

In memory of Bob Mendelsohn from the Chesler Family

*Yahrzeit* of Mary Darico, Andrew Darico, and Beverly Addiss from Mrs. Jane Darico

*Yahrzeit* of Adeline K. Chorchos from Samuel Chorchos

*Yahrzeit* of Marsha Cohen from Stanley Cohen

## **REBECCA ANN & HERMAN SEIDMAN FUND**

Yizkor donation in memory of loved ones; In memory of her father and his parents on their *Yahrzeits*; In memory of Nihla (Libby) Lapidus, Gail Freedman's sister, from Eveleen Zimmerman

## **RITA & DAVID SCHMERLER FUND**

In memory of Natalie Zimmerman, beloved mother of Jane Zimmerman; In memory of Jonathan Kaplan, beloved husband of Linda, from Alan & Lea Schmerler

## **SECURITY FUND**

In memory of the Honorable Judge Jonathan J. Kaplan from John Halpern

## **SHABBAT LUNCHEON FUND**

In memory of Sally Ivaldi from Elly and Steve Cohen

In memory of Sally Ivaldi from Risa and Roy Filkoff  
*Yahrzeit* of Katie Vinick, mother of Calvin Vinick from Calvin & Elaine Vinick

## **SHELDON & DORIS ADLER FUND**

*Yahrzeit* of Esther Adler & Harry Rubin from Mrs. Doris Adler

## **SOCIAL ACTION FUND**

In memory of Sally Ivaldi from Lynn & Jack Cohen  
Yizkor for May & Bernard Kahn & Rose & Eli Lerman from Manuel & Maxine Lerman

## **YOUTH ACTIVITIES FUND**

*Yahrzeit* of David Rubin from Deborah Gordon

## **Donation Submission Guidelines**

**Clearly print or type the following information and enclose it when you send in your donation payment:**

Your name and address as you want it to be printed

Which fund(s) you would like your donation applied to

The purpose of the donation, including the full name of the person you are honoring and your relation to them (parents, siblings, etc.), if applicable

The name and address of whom you would like to receive the acknowledgement

**Please note:** If you are including multiple dedications on one check, each dedication should be at least a minimum of \$10, and please specify how much you would like to go to each fund.

**All checks should be made out to BSBI** and sent to the synagogue at **400 East Middle Turnpike, Manchester, CT 06040**. If you are donating to an Endowment fund, note the name of the fund on the memo line. Please allow some time for the donations to be processed and receipts sent out. If you have any questions regarding donations, please contact **Judy Sawtelle** at [admin@myshul.org](mailto:admin@myshul.org).



# August 2021 Calendar

Sunday	Monday	Tuesday	Wednesday	Thursday	Friday	Saturday
1 (23 Av)	2 (24 Av) 7:00pm Mincha/ Maariv	3 (25 Av) 7:00pm Mincha/Maariv	4 (26 Av) 7:00pm Mincha/ Maariv	5 (27 Av) 7:00pm Mincha/Maariv	6 (28 Av) 6:00pm Friday Night Services 7:44pm Candle Lighting	7 (29 Av) <b>Shabbat Mevarchim</b> 10:00am Shabbat Services 8:46pm Havdalah
					Sunset: 8:02 pm	Sunset: 8:01 pm
8 (30 Av) <b>Rosh Chodesh Elul</b>	9 (1 Elul) <b>Rosh Chodesh Elul</b> 7:00pm Mincha/ Maariv	10 (2 Elul) 1:30pm Knit & Kvetch 7:00pm Mincha/ Maariv	11 (3 Elul) 7:00pm Mincha/ Maariv	12 (4 Elul) 7:00pm Mincha/Maariv	13 (5 Elul) 6:00pm Friday Night Services 7:35pm Candle Lighting	14 (6 Elul) 10:00am Shabbat Services 8:37pm Havdalah
					Sunset: 7:53 pm	Sunset: 7:52 pm
15 (7 Elul)	16 (8 Elul) 7:00pm Mincha/Maariv	17 (9 Elul) 7:00pm Mincha/Maariv	18 (10 Elul) 7:00pm Mincha/ Maariv 7:30pm BOD Board Meeting	19 (11 Elul) 7:00pm Mincha/ Maariv	20 (12 Elul) 6:00pm Friday Night Services 7:25pm Candle Lighting	21 (13 Elul) 10:00am Shabbat Services 8:26pm Havdalah
					Sunset: 7:43 pm	Sunset: 7:41 pm
22 (14 Elul) 11:30am Yard Goats Faith & Family Day	23 (15 Elul) 7:00pm Mincha/Maariv	24 (16 Elul) 7:00pm Mincha/Maariv	25 (17 Elul) 7:00pm Mincha/ Maariv	26 (18 Elul) 7:00pm Mincha/Maariv	27 (19 Elul) 6:00pm Friday Night Services 7:14pm Candle Lighting	28 (20 Elul) 10:00am Shabbat Services 8:15pm Havdalah 9:00pm Selichot
					Sunset: 7:32 pm	Sunset: 7:30 pm
29 (21 Elul) 10:00am Sisterhood Adventure Walk 11:00am Sisterhood Brunch	30 (22 Elul) 7:00pm Mincha/Maariv	31 (23 Elul) 7:00pm Mincha/ Maariv 7:30pm Sisterhood Board Meeting				

Please note that the *Chai Lights* calendar dates are as of the date of publishing. Any schedule changes after this time will be posted on the online calendar at [myshul.org](http://myshul.org) and included in the weekly announcements. These sources will have the most up to date information on events.

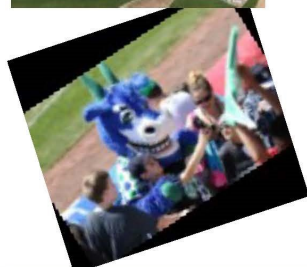
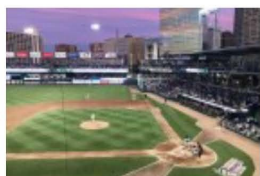


**BSBI Brotherhood Presents  
Faith & Family Day at  
Dunkin' Donuts Park**

**Sunday, August 22, 2021**

**Game Time: 1:05 pm | Gates Open: 11:35**

*New Hampshire Fisher Cats (Toronto Blue Jays) vs Hartford Yard Goats (Colorado Rockies)*



**Featuring:**

*Reserved Seating  
Official Group Welcome  
Kosher Food Options Available  
Post-Game Kids-Run-the-Bases Activity  
Pre-Game Ceremony Honoring Local  
Community Leaders*



*BSBI Brotherhood has reserved tickets at a group rate of \$12 each. Please reserve your tickets early. **Your order with payment must be received no later than August 1st** to allow adequate time for us to complete the order and arrange for delivery to you **by email.***

*Make checks, for tickets, payable **ONLY** to **"BSBI Brotherhood,"***

*and mail with your completed order form to:*

*Steven D. Cohen, 29 Leela Way, Tolland, CT 06084*

*Your tickets will be reserved once payment is received.*

*Please email questions to Steve at [cttoxdoc@gmail.com](mailto:cttoxdoc@gmail.com)*



**YardGoatsBaseball.com**



**860-246-GOAT (4628)**

*BSBI Brotherhood Presents Faith & Family Day at Dunkin' Donuts Park*

*Sunday, August 22, 2021*

*Game Time: 1:05 pm | Gates Open: 11:35*

*Children 3 and under are free if sitting on a parent's lap during the game. Please note any handicapped tickets needed.*

NAME: \_\_\_\_\_

NUMBER OF TICKETS: \_\_\_\_\_ PHONE: \_\_\_\_\_

EMAIL: \_\_\_\_\_

**SPACE IS LIMITED-RSVP before August 1st.**

**Your tickets will arrive by email.**

24th  
Annual  
ABITZ-ANGEL  
MEMORIAL GOLF  
TOURNAMENT



Blackledge Country Club  
September 1, 2021

IN SUPPORT OF



and other local charities

Hole-in-One Contest for  
a New Car  
sponsored by

**LYNCH**  
TOYOTA

### TOURNAMENT DAY

- |              |  |
|--------------|--|
| 8:30-10:00   | Registration, Breakfast, and<br>Raffle Entry |
| 10:00        | Shotgun Start                                |
| 10:00 - 5:00 | Tournament & Contests                        |
| 5:00 - 7:00  | Dinner                                       |



Sign up for our mailing list and  
stay up to date on  
tournament info

[aamgtgolf.com](http://aamgtgolf.com)

## ABOUT THE TOURNAMENT

The Abitz-Angel Memorial Golf Tournament is named in memory of two dedicated men who endlessly gave back to the community, and who also helped make this tournament a success. Todd Abitz was one of the tournament founders and chaired the board in its early years, helping it grow to the successful fundraising event it has become today. After his passing, the tournament was renamed in Todd's honor.

Bill Angel played in the tournament for most of its existence, contributed generously, and helped the event grow for nearly two decades. Before passing away from a brain tumor in 2017, Bill asked that any memorial donations be given to the Connecticut Children's Medical Center's Foundation for Pediatric Oncology. This final act of charity and selflessness inspired us to add his name to the tournament and designate Connecticut Children's as the primary beneficiary for this annual charity event.



**Registration, Sponsorships  
& Volunteer Information  
Available Online**  
[aamgtgolf.com](http://aamgtgolf.com)





BSBI has been given the opportunity to accept donations of vehicles through a partnership with Vehicles For Charity to process donated

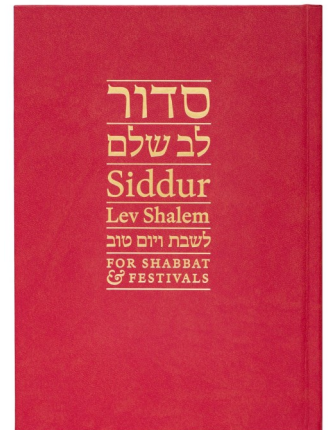
vehicles. Consider donating your unwanted vehicle in support of BSBI. It is easier and faster than selling it on your own, and you may qualify for a tax deduction! Donors say it is a satisfying way to make a larger donation than they normally could.

Vehicles accepted by this program include: unwanted car, truck, boat, motorcycle, RV or recreational vehicles.

For more information go to:

<https://www.vehiclesforcharity.org>

We have now made the switch to the new *Siddur Lev Shalem*! Similar to the *Machzor Lev Shalem* we use on Rosh Hashana and Yom Kippur, *Siddur Lev Shalem* includes informational side notes and extra readings on each page to help everyone get more out of Shabbat *te-phillot* (prayer). We are now offering opportunities to dedicate these siddurim in honor of people or events in our lives or in memory of loved ones. A siddur can be dedicated for just \$50 a book. If you would like to see a copy of the new siddur, they are available for inspection at the synagogue.



## Beth Olam Cemetery

The lock at Beth Olam has been replaced and now no key is required. The combination is 1818.

There is a reminder near the lock in case you have forgotten the combination.



Please follow the directions below to use the new lock:

- The lock is located under the black weatherproof cover
- Pull the lock over the black weatherproof cover
- Turn the number to 1818-line them up with the red line
- Lock will pull apart
- When done, reattach the cable to lock it
- Turn at least one number to secure lock
- Replace the lock under the black weatherproof cover

## Don't Forget to Check Out MyShul.org!

Our website has all the latest information on upcoming events, class and event registration, secure online donations, and shopping opportunities that support BSBI!

If you would like to send in any pictures, videos, or upcoming event information, please email [programming@myshul.org](mailto:programming@myshul.org).



Beth Sholom B'nai Israel

## Support BSBI with AmazonSmile!

AmazonSmile is a simple and automatic way for you to support BSBI every time you shop, at no cost to you. When you shop at [smile.amazon.com](https://smile.amazon.com), you'll find the exact same low prices, vast selection and convenient shopping experience as at Amazon.com, with the added bonus that Amazon will donate a portion of the purchase price. For detailed instructions for how to sign up, visit our website at:

[www.myshul.org](https://www.myshul.org).

**amazon**smile  
You shop. Amazon gives.





Simple, Affordable, Jewish Funerals.

 **BLUMENSTEIN**  
FUNERALS

860-243-6000 | [blumensteinfunerals.com](http://blumensteinfunerals.com)



## See Your Ad Here and Support BSBI!

For more information, contact Tova Haley at [programming@myshul.org](mailto:programming@myshul.org)  
or call 860-643-9563 x100

For news of Israel, there's  
Haaretz, Maariv, and the  
Jerusalem Post.

For news of  
Manchester and Vernon,  
there's only the  
Journal Inquirer

Proudly Supported by the



Jewish Federation  
OF GREATER HARTFORD

### Home Bound?

### Prefer at Home Foot Care?



Manchester Podiatry Center, P.C.

1-888-804-7180  
by appointment only

House Calls

Call Dr. Kenneth Wichman

and schedule a convenient  
visit at your home.

[www.ctfootdoctor.com](http://www.ctfootdoctor.com)



STANLEY FALKENSTEIN  
Attorney at Law

FALKENSTEIN, MEGGERS,  
PAUL & ROBINSON, P.C.

113 East Center Street  
Manchester, CT 06040-5243  
[www.113law.com](http://www.113law.com)  
[sfalkenstein@113law.com](mailto:sfalkenstein@113law.com)

phone (860) 649-2865  
(860) 649-5278  
fax (860) 649-2073  
(860) 645-8207

Joel L. Rosenlicht, D.M.D.  
Ryaz Ansari, D.D.S.



Rosenlicht & Ansari  
Implant Dentistry, Oral and Facial Surgery Center

*The smart choice for:*

- \* Dental Implants  
~Teeth in a Day
- \* Wisdom Teeth
- \* Snoring

483 Middle Turnpike West  
(860) 649-2272

[www.Jawfixers.com](http://www.Jawfixers.com)



JOYCE EPSTEIN  
Owner/Broker

111 Main Street  
Manchester, CT 06042

Email: [Joyce@JoyceEpstein.com](mailto:Joyce@JoyceEpstein.com)

[www.JoyceEpstein.com](http://www.JoyceEpstein.com)

INTEGRITY KNOWLEDGE SERVICE



RONALD A. DEL VECCHIO, D.D.S.  
DIPLOMATE AMERICAN BOARD OF PERIODONTICS  
PRACTICE LIMITED TO PERIODONTICS AND IMPLANTS

VERNON PROFESSIONAL BUILDING  
281 HARTFORD TURNPIKE, RT. 30  
VERNON, CONNECTICUT 06066



Manchester      Glastonbury  
317 Highland Street      1320 Manchester Road  
860-646-4277      860-659-1717

Farmington      Suffield  
204 Main Street      68 Bridge Street  
860-674-9536      860-668-9660

• [www.highlandparkmarket.com](http://www.highlandparkmarket.com) •

# Lynch Motors Inc.

LYNCH



TOYOTA  
179-235 TOLLAND TPKE  
(860) 646-4321

MANCHESTER, CT



- Retirement Income Planning
- Divorce Financial Planning
- College Savings Plans
- Fee based Money Management
- Annuities
- Life Insurance

Contact: Jay Bigman

[jay@jaybigman.com](mailto:jay@jaybigman.com)

860-644-9834

[www.jaybigman.com](http://www.jaybigman.com)

Securities by Licensed Individuals Offered  
Through Securities America Inc. A Registered  
Broker/Dealer. Member FINRA, SIPC

# BECK & ELDERGILL, P.C.

## LAWYERS

Employment - Personal Injury - Domestic Relations  
447 Center Street, Manchester, CT 06040 (860) 646-5606



**YOUR COMMUNITY.  
YOUR FEDERATION.**

IF YOU OR SOMEONE YOU KNOW has had a child introduced to Judaism through the PJ Library or sought consultation about improving the quality of life for an aging parent at Jewish Family Services of Greater Hartford, then you know how important the Annual Campaign is to our community.

EVERY YEAR, THROUGH THE ANNUAL CAMPAIGN, countless lives are saved, cared for, reached out to and rebuilt.

WITH ONE GIFT, YOU CAN MAKE A WORLD OF DIFFERENCE in many of the causes important to you—all at once. With Federation's community based giving wherever the need is greatest, we address it because of donations from donors like you.

 Jewish Federation  
OF GREATER HARTFORD  
[www.JewishHartford.org](http://www.JewishHartford.org)  
f | [www.facebook.com/JewishHartford](http://www.facebook.com/JewishHartford)  
t | @JewishHartford



### THE TROPHY SHOP

—Since 1972—  
Plaques, Trophies and Engraving Services

[www.thetrophyshop.biz](http://www.thetrophyshop.biz)

(A Wraith Industries LLC Company)

214 Hartford Turnpike • Vernon • CT • 06066  
sales@thetrophyshop.biz • (860) 871-0867

LAW OFFICES OF  
PAUL L. RUBIN

PAUL L. RUBIN  
Attorney at Law

135 East Center Street • Manchester, CT 06040  
Tel. 860-647-9210 • Fax 860-647-9265  
E-Mail: attyrubin@aol.com

## HEBREW FUNERAL ASSOCIATION, INC.

*A traditional way for all Jews since 1898*

"A True Act of Kindness" - חסד של אמת

Leonard J. Holtz, Executive Funeral Director  
Second Generation Serving Greater Hartford

906 Farmington Ave., West Hartford, CT

Tel. (860) 224-2337

Cell (860) 888-6919

P.O. Box 370302, West Hartford, CT 06137

*Pre-Paid Funeral Trusts*

## TotalVision Eyecare

*Medical eye care • Contact lenses • Custom eyewear*

Lance I. Alpert, O.D.

*Doctor of Optometry*

362 Middle Turnpike West  
Manchester, CT 06040  
(860) 649-3311

[www.totalvisioneyecare.com](http://www.totalvisioneyecare.com)  
[dralpert@totalvisioneyecare.com](mailto:dralpert@totalvisioneyecare.com)  
Check us out on Facebook!

Philip M. Partney 860-463-8173  
President



## PMP Profix LLC

**Small jobs our specialty**

-  Home Improvements
-  Leaky Faucets
-  Carpentry Repair
-  Custom Shelving
-  Dryer Vent Cleaning, and more!

Contact Phil, he can solve your problem!

[WWW.PMPProfix.com](http://WWW.PMPProfix.com) E-mail: [philippartney@pmpprofir.com](mailto:philippartney@pmpprofir.com)  
CT HIC REG# 0632587 Fully Insured

STUART J. HORN, D.M.D.  
GEORGE S. CAYE, D.D.S.

COMPREHENSIVE DENTISTRY

599 Main Street | Telephone: (860) 647-1565  
Manchester, CT 06040 | Fax: (860) 643-2796



Beth Sholom B'nai Israel  
400 Middle Turnpike East  
Manchester, CT 06040

Address Service Requested

Time Sensitive Material

Please Do Not Delay

THE SEPTEMBER *CHAI LIGHTS* DEADLINE IS **AUGUST 12<sup>TH</sup>**

PLEASE SEND ALL ARTICLES TO **PROGRAMMING@MYSHUL.ORG**



## BSBI'S 10<sup>th</sup> Annual Taste of Honey

**Sunday, September 12, 2021**

12:00 pm-2:00 pm



A welcome back for a sweet new year of learning!

Come over to BSBI for Games, Face Painting, Music, a BBQ lunch,  
Honey Cake and Apples.

Free and open to the Jewish Community

Beth Sholom B'nai Israel

