

Vibrant Judaism - Welcome Home

March/April 2024 • Adar I/Adar II/Nisan 5784 • Volume 283

SUPER BINGO SWEET XVI



FEBRUARY 10, 2024

Inside

Services	2
Purim Information	2
From the Rabbi's Study	3
Getting to Know TBE	4
Matthew Schaffer Schwartz Tikkun Olam Award	4
Cantor's Corner	5
Education Update	6
Early Childhood, Youth & Teen Programs	7
Adult Education Programs	8
Tikkun Olam / Social Action	9
Sisterhood	10
Men's Club	10
Coming Home	11
Behind the Scenes	12
Bingo Contributions	13
Dedicated Donations	14-16
Good Things Are Happening	17
Blood Drive Donors	18
Support our Advertisers	19-22
Staff & Clergy Contacts and TBE Board of Directors	23



**ביתחד
TOGETHER**

Join
Us!



= Virtual attendance available
via Zoom or Livestream



= Registration required

Go to ► www.templebeth-el.org
or call (847) 205-9982 to register
for programs, receive links for virtual
attendance, or more information.

Services

March and April 2024

Temple Beth-El warmly welcomes our congregants to a wide variety of worship opportunities. From casual services to services with a more formal feeling, from family services to adults of all ages, Temple Beth-El has a worship experience that is right for everyone.

► TempleBeth-El.org/livestream

KABBALAT SHABBAT

Early Oneg & Service

Fridays: March 15, 22, 29,
April 12, 26

Early Oneg, 5:30 pm
Service, 6:00 pm

KABBALAT SHABBAT

Late Service followed by
Dessert Oneg

Friday, March 1: 7:30 pm with
Adult Choir and Anniversary
Blessings with Special Guest
Speaker Rabbi Deborah Helbraun

Friday, April 5: 7:00 pm with
Adult Choir and Anniversary
Blessings with Scholar in Residence
Rabbi Dr. Danny Schiff and Guest
Cantor Rosalie Will (see p. 8 for
more information)

SHABBAT YELADIM

Fridays: March 1 & April 5

Pizza Dinner, 5:30 pm
Service, 6:00 pm followed by
age-appropriate art projects

FAMILY SHABBAT

Fridays: March 8 & April 19

Early Oneg, 5:30 pm
Service, 6:00 pm
March 8, Special Family
Shabbat Service
April 19, 2nd Grade Family Dinner

B'NEI MITZVAHS / SHABBAT SERVICES

Saturdays, 10:00 am

March 2: Ariel Sabin
March 9: Ethan Kaufman
April 13: Olive Treutler

CASUAL MORNING

MINYAN SHABBAT

Saturdays, March 2, 9, 16, 23, 30
April 6, 13, 20, 27, 9:30 am

PASSOVER MORNING SERVICE, YIZKOR AND LITE LUNCH

Monday, April 29
10:00 am–Noon

To view events by date,
scan this QR code or go to
www.templebeth-el.org
and click "Calendar".



Purim Celebration

Barbie's Purim
Paradise Carnival!
Saturday, March 23

4–6:30 pm



Get ready for some Barbie themed fun that will remind you,
you are "Kenough!"

Celebrate Purim in style with Temple Beth-El at Barbie's Purim
Paradise! Step into a world of endless fun for all ages! Bring your
Barbie, Ken, Chelsea, Skipper, Alan, and anyone in your family who is
ready for a reimagined Purim Carnival designed for everyone.

From Barbie Doll scavenger hunts and minute to win it competitions,
to photo booths designed for outrageous selfies, there's something
for every kind of doll at this year's carnival.

4–5:30 pm Barbie's Purim Paradise Carnival

5:30–6 pm Havdalah followed by Megillah reading

6–6:30 pm Barbie themed Purim Spiel starring our talented
TBE staff and congregants

To register for this memorable Purim celebration and for additional information,
please scan this QR code or click on the event on the TBE calendar.

From the Rabbi's Study

Morning Blessings

By Rabbi Sidney M. Helbraun



Our daily morning service begins with a series of blessings that take us on a journey from the unconscious — the world of sleep and dreams, back to reality — the world of consciousness.

These fourteen prayers begin by acknowledging the roosters crow, which calls the soul back into its body, and then notes our often 'bleary' vision when we first open up our eyes. It recognizes the stretching of limbs, before we venture forth, place our feet on the floor and stand. We express our gratitude that the ground beneath our feet is firm, enabling us to stand up straight as our feet begin to move forward.

We do not overlook the fact that we have clothes to wear, and remind ourselves that, though we might have borne the weight of the world on our shoulders yesterday, with the dawning of this new day our strength has been renewed. When we stand before a mirror, perhaps and remove the last vestige of sleep — the 'sand' from our eyes, we see ourselves not as we are, but as who we were created to be — creatures made in the image of God, who have been endowed with the freedom to choose our own path

through this world — and have chosen to live as Jews, members of a strong people that are called to bring beauty, light, and blessing into the world.

Like a yogi, or mystic, these *birchot hashachar* — morning blessings transform these mundane acts of morning into a series of **affirmations which instill us with purpose and dignity, reminding us, not of the responsibilities and obligations inscribed in our daily calendar, but of the beauty and dignity of who we are. Awakening us to the possibilities of how we might carry ourselves and be in the world.**

As Spring is a time of renewal for the earth, so too can every morning be an opportunity for renewal of the self; for seeing the possibilities of who we are meant to be and the gifts that all of us can bring anew each day.

May we see these blessings within ourselves and remember the beauty and blessing that is instilled in each of us.





Getting to know TBE

Yahrzeit List

A yahrzeit is the anniversary date of the death of a loved one, which is marked by the lighting of a yahrzeit candle on the evening prior to that date, and by reciting Kaddish in their memory. Reminders are emailed to the mourner (paper letters are mailed to anyone who does not have an email address in our system) approximately one month prior to the yahrzeit date. If your loved one has a memorial plaque, their name will automatically be included on the Yahrzeit list that is read during the corresponding Shabbat service. If your loved one does not have a memorial plaque, please reach out to the temple office so we can add their name to the Yahrzeit list.

Kaddish List

Kaddish is a prayer said by a mourner to show that, despite the loss of a loved one, we still praise God. It is also a way to honor the life of the deceased. Our Kaddish list contains the names of loved ones who have passed away within the last year. TBE member names remain on the Kaddish list for a full 11 months. The names of extended family of our members are placed on the Kaddish list for 30 days (Shloshim) and can be included for the full 11 months if requested by our TBE member.

Mi Shebeirach List

I have a sick family member or friend and want to pray for them. The words Mi Shebeirach translates to 'the One who blessed.' It is a prayer that asks God to bring about healing for those in need. Our Mi Shebeirach list is read every week immediately prior to Shabbat services and

contains the names of any TBE members or loved ones who are in need of healing prayers. Those attending the service are also invited to share names of loved ones in need of healing during the Mi Shebeirach prayer.

How can I celebrate and/or memorialize my loved ones?

Memorial Plaques are created for loved ones who have passed away. They are placed on the walls outside our worship spaces and serve to memorialize family members who are no longer with us. Plaques may be purchased for \$750 and include our loved one's English Name as well as their English & Hebrew date of death. The names of those who have a Memorial Plaque are automatically included on the Yahrzeit list which is read on the anniversary of their death.

Purchasing a leaf on our Trees of Life is a wonderful way to celebrate milestones and achievements of our friends and family members. Leaves may be purchased for \$136 and can accommodate up to six lines of text.

Inscribing a Brick in our garden pathway is also a meaningful way to remember a significant moment in your family's life and add beauty to our TBE grounds. Bricks may be purchased for \$180 and can accommodate up to three lines of text.

Please contact Leslie Hanus at lhonus@templebeth-el.org or 847-205-9982, ext. 202 to add names to the Yahrzeit, Kaddish or Mi Shebeirach Lists, or to purchase memorial plaques, leaves or bricks for your loved ones.



MATTHEW SCHAFFER SCHWARTZ TIKKUN OLAM AWARD

In 2004 Cyndee Schaffer and Doug Schwartz, two long-standing members of Temple Beth-El, established a college scholarship fund called the Matthew Schaffer Schwartz Tikkun Olam Award, in memory of their

beloved son. The scholarship is awarded annually to a graduating high school senior who, by word and deed, has made significant contributions to the Jewish ideal of "helping to repair the world."

In addition to receiving a check in the amount of \$500, the recipient of the award will have their name inscribed on a plaque displayed at Temple Beth-El and on a prayer book plate.

To apply for this award, please submit:

- A list of your Tikkun Olam activities.
- A list with your activities from your college applications.
- A short essay (250 words or less) explaining your involvement. You may describe one project of which you are particularly proud, or several smaller projects in which you have participated. Please also include the names of those with whom you worked, and the location at which the work occurred.

All submissions must be received by Leslie Hanus no later than April 12, 2024. Please contact Leslie for further information or with your questions regarding this scholarship opportunity, at 847-205-9982 ext. 202, or lhonus@templebeth-el.org.



Cantor's Corner

In Our Dream House by Cantor Adam Kahan

Our Jewish tradition loves anticipation.

When we leave temple on Yom Kippur, the tradition is to drive the first nail into

the Sukkah, even though Sukkot is still days away. More frequently, when Shabbat is almost here we begin to shift our pace on a Friday afternoon, maybe even filling the house with fragrances of fresh baked challah. During a Shabbat service that precedes an upcoming festival, we'll often include a melodic signature of that upcoming holiday...like an auditory appetizer of what is soon to come. We just love looking forward to what is coming next, and that is why I love March and April. May and June in Chicago is possibly one of the most beautiful places in time in the whole world, and we are almost there. We are emerging from our slumber and grogginess beset by having traversed the doldrums of Midwestern winters, and now we are in the stretching period.

We are starting to come back to vibrance, and we are doing so in one of my favorite ways with Purim.

In my first year at TBE, I came to know the group of wonderful musicians, singers, actors, and just all-around terrific people who gathered to practice and perform our annual Purim play, the spiel. We always present the spiel on the actual evening of Purim which, more often than not, falls on a weeknight. However, as luck would have it, this year Purim is observed on Saturday, March 23rd.

Barbie and her friends will fill our TBE Dream House on that amazing afternoon and early-evening with games for kids to adore, playful costumes galore, tasty bits in store, a Megillah reading from yore, and a spiel full of entertaining lore!

We can't wait to see you as we gather to celebrate an amazing time filled with the warmth of community. I can't wait!





Education Update Calendars Converging

By Laura Perpinyal, RJE, Director of Congregational Learning

Sometimes we are in the right place at the right time.

This year, both 5784 in the Jewish calendar and 2024

in the secular Gregorian calendar are one of those times. Both calendars experience a Leap Year which happens only 9 times in a century!

After doing a little reading, I learned that the Jewish calendar balances both a lunar and a solar calendar so that our holidays continue to fall in their “correct” season: Passover in the Spring, Sukkot in the Fall, etc. To keep the balance, the Jewish calendar includes an entire extra month added to the calendar in a fixed system developed more than two millennia ago. “Seven times in 19 years, we add a full month to our calendar — a “second Adar” in addition to “regular Adar.” This period of 19 years is known as a machzor, and, yes, it’s the same word (generally indicating a returning cycle) as the word for a High Holiday prayer book.” (URJ.org) We call this year with an extra month: **שנה מאוברט** shana m’uberret — literally, “a pregnant year.”

Our secular calendar adds an extra day every 4 years. Because the earth revolves around the sun in 365 days plus about six hours, we need to add more time to our cycle to keep the secular calendar balanced too.

Purim takes place in Adar II, so you may feel like its “late” and subsequently, all other holidays will be pushed later into our year, making all of our holidays feel “later” than usual. Rosh Hashanah for example, begins October 2nd, but as it always does, falls on the first of Tishrei and Hanukkah, as always is on the 25th of Kislev, but this year falls on the secular date of December 25th!

It’s traditional to greet people at this time of year with the phrase: **מועדים לשמחה** moadim l’simcha, meaning, may your times be happy! There are some that also say that an extra Adar is a lucky month! So, wishing you extra joy and happiness in these dark and sometimes, uncertain times!



FAMILY RETREAT

MARCH 15-17, 2024

At OSRUI Retreat Center in Oconomowoc, WI
Everyone is welcome! Enjoy a relaxing, music-filled weekend with many fun activities. Such a special experience for families!



Early Childhood, Youth & Teen Programs

✓ = Registration required

For more information on Youth and Teen Programs, contact Jessi Hersman at jhersman@templebeth-el.org.

SHABBAT YELADIM ✓

Ideal for children in 2nd grade and younger

Friday, March 1, 5:30 pm

Join us as we celebrate Purim and make special masks for the upcoming holiday! Come dressed in your favorite super hero (or any) costume! Pizza dinner included.

Friday, April 5, 5:30 pm

Join us for a special musical performance of "The Prince of Egypt" by Stages Chicago. Older siblings and grandparents are welcome to attend and participate. Dinner Included.

JBABY BROADWAY STORYTIME ✓

For ages 0–2

Spend the morning with your 0–2-year-old as our littlest Broadway fans are introduced to show tunes, characters and stories while Broadway musicals are brought to life by Stages Performing Arts. Each class incorporates activities that are designed to support your little one's physical, cognitive, social-emotional and language development. An age-appropriate story will be included to give you a chance to socialize too. Come meet other parents with children similar in age!

Movers and Shakers: 9:30–10:30 am

Babies: 10:30–11:30 am

Session 2: Wed., Jan. 10–March 13, 2024

10 classes. Cost: \$120

Session 3: Wed., April 10–May 29, 2024

8 sessions, Cost: \$96

KOBE EVENTS

CHOCOSADER:

A SWEET CELEBRATION OF PASSOVER

Sunday, April 28, 12:45–2 pm

\$10 per participant

For TBE members only, grades K–7

Registration will close April 24

Step into a world where the Seder table is a chocolate wonderland! Picture chocolate-covered matzah, marshmallow frogs swimming in a sea of chocolate, and gummy locusts buzzing among chocolate-covered raisins. Each bite tells the story of Passover in delicious detail, creating an unforgettable Passover adventure for kids! Our 5th, 6th, and 7th grade students will serve as seder leaders. For accommodations and questions, please contact Jessi Hersman at jhersman@templebeth-el.org or 847-205-9982 ext. 205.

TOBE EVENTS

MATZOH MADNESS: THE ULTIMATE MATZOH BAKING COMPETITION

Sunday, April 28, 12:45–2:30 pm

\$8 per participant

For TBE members only, grades 8–12

Registration will close April 24

Get ready for a matzoh-making showdown like no other! Students will gather in teams, armed with rolling pins and flour, to bake the perfect unleavened masterpieces and crown the ultimate Matzoh Master! For accommodations and questions, please contact Jessi Hersman at jhersman@templebeth-el.org or 847-205-9982 ext. 205.

ESCAPE ROOM:

NO ESCAPE, 1501 W. Dundee, Buffalo Grove

Friday, March 9, 6:15–8 pm

Grades 8–12

\$35 per participant

Registration will close March 5

Can our TBE teens work together to escape a room of text clues, visual hints and creative twists? Like an Escape Room, Judaism encourages critical thinking and interpretation of texts and traditions. Our teens will uphold the Jewish tradition of community cooperation, while being challenged by Nescape in Buffalo Grove. For accommodations and questions, please contact Jessi Hersman at jhersman@templebeth-el.org or 847-205-9982 ext. 205.

KoBE (Kids of Beth-El) is programming created for grades K–7 and is the place for fun and social time with a Jewish twist! These events are a great opportunity to get to know each other outside of the classroom. Events are hands-on, drop-off and engaging!

ToBE (Teens of Beth-El): This programming is designed for our 8th–12th grade students and focuses on combining Jewish values, and leadership while celebrating our unique approach to exploring the world around us. Events and opportunities include social action work and meaningful experiences throughout Chicagoland. ToBE will also serve as leaders and creators for our KoBE programs.



Adult Education & Programs

To view our Adult Education programs, scan this QR code or visit www.templebeth-el.org/adult-education



✓ = Registration required

👤 = Virtual attendance available

PARASHAT HASHAVUAH

(Weekly Torah portion)

with Rabbi Helbraun or
Cantor Kahan

Ongoing Saturdays, 11:00 am–Noon

Join Rabbi Helbraun or Cantor Kahan for teachings from the weekly Torah portion. On mornings when there is a B'nei Mitzvah, Tom Burnstine will lead the class.

GRIEF SUPPORT GROUP

4th Wednesday of the month
7:00 pm at TBE

TBE has partnered with JCFS to provide members and the community with a professionally facilitated grief support group. If you are interested, please contact Marsha Raynes at JCFS at (847) 745-5408 or MarshaRaynes@jcfs.org for more information.



WEDNESDAY'S WINDOWS ON THE WORLD SERIES

SHALVA ON CONSENT IN THE MEGILLAH

Wednesday, March 20, 1:30 pm

Learn with Anita Pildes, SHALVA Community Education and Outreach Coordinator, on consent in the Megillah. Is Vashti misunderstood? What values do King Ahashervus and Mordechai express? How is Esther's role understood in a modern context? We will dive into the text and discussion together.

WHY NOW? EXAMINING THE RISE OF ANTI-SEMITISM

Wednesday, April 17, 1:30 pm



With Steven
Windmueller, Ph.D.
Emeritus Professor
of Jewish Communal
Studies, HUC-JOR, LA



SCHOLAR IN RESIDENCE WEEKEND WITH RABBI DR. DANNY SCHIFF April 5–7

Once or twice each year TBE brings in respected scholars or artists to spend a weekend engaging with and enlightening our community through a variety of programs. We are very excited to

announce that our next visiting scholar will be Rabbi Dr. Danny Schiff. His book, *Judaism in the Digital Age* was a focal point of Rabbi Helbraun's Rosh Hashanah sermon. His thought-provoking presentations will focus on the need for Judaism to provide moral focus and clarity in this new world, as well as the role of Israel in our changing religious landscape.

Rabbi Dr. Danny Schiff is the Foundation Scholar at the Jewish Federation of Greater Pittsburgh and the founder and president of MOJI, the Museum of Jewish Ideas. He is a noted teacher and researcher in Jewish ethics. Rabbi Dr. Schiff previously served as the Community Scholar for the Agency for Jewish Learning in Pittsburgh, as Rabbi of B'nai Israel in White Oak, PA, and as Rabbi at Temple Beth Israel in Melbourne, Australia.

SCHOLAR IN RESIDENCE PROGRAMS:

Friday April 5: *What Now? Six Months After October 7th, Where Do We Go From Here?*

Saturday, April 6: *What's Next? The Future of Judaism in a Digital Age.*

Sunday, April 7: *What's Coming? Living For Many Centuries Might Soon be Possible. What Does Judaism Teach About That? (Brunch & Text study)*

Watch your Sunday Events Email Newsletter for more details and registration information.



Join us for Shabbat Friday, April 5, as we welcome musical guest, Cantor Rosalie Will. Cantor Will is a worship leader, congregational consultant, clergy coach, songleader, and former congregational clergy. She is the founder and Executive Director of Sing Unto God, a non-profit dedicated to elevating the practice and promotion of meaningful worship and of singing together through supporting and training those who lead communal singing. She is the author of the narrative book with Transcontinental Music Publishing entitled *Songleading: A Work of Art*.

Save the Date September 25, 2024



Knead a Night Out? BRAIDING CHALLAH *with the Challah Prince*

A congregational event, just in time for Rosh Hashanah!
Join internationally acclaimed Israeli challah artist, Idan Chabasov.
Braid your own challot with The Prince.



Sisterhood



Tikkun Olam / Social Action

► www.templebeth-el.org/social-action

CARING COMMITTEE

Are you looking for a great way to get involved?

Join our Caring Committee Beyachad

Now more than ever people need a hand during these challenging times. Please let us know if you would like to volunteer to help our members most in need including wellness check-in calls, shopping, delivering treats to those who are ill, or helping with other requests. We especially need volunteers who are west of Milwaukee Avenue. Email Holly at hhamburg@templebeth-el.org.

A JUST HARVEST ✓



5th Wednesday and Thursday of the month

Many of our students choose to decorate the Bimah for their B'nei Mitzvahs with food baskets to represent their support of A Just Harvest. AJH's mission is to fight poverty and hunger in the Rogers Park and greater Chicago community by providing nutritious meals daily while cultivating community and economic development and organizing across racial, cultural and socioeconomic lines in order to create a more just society. For more information visit www.ajustharvest.org. Volunteer to shop and/or deliver food to A Just Harvest, the largest community soup kitchen in the Chicago area. Volunteers from Temple Beth-El join together four times a year to help feed those in need.

To participate in A Just Harvest shopping or delivery, register using this link: <https://www.signupgenius.com/go/5080C4FA8AF2DA02-ajustharvest>

FEED MY STARVING CHILDREN



Many of our students choose Feed My Starving Children for their B'nei Mitzvah projects. FMSC believes hope starts with food and is dedicated to seeing every child whole in body and spirit. They work with food distribution partners that stay with communities for the long haul, empowering them to move from relief to development. To get involved, visit www.fmssc.org/get-involved.

PLEASE JOIN MENSCH MATCH!

Would you or your family like to bring more joy into the life of an elderly person? Teach your children about a different kind of mitzvah and enjoy a feel good experience?

TBE Sisterhood is partnering with Gidwitz Place for Assisted Living in Deerfield to create a one-on-one matching program for residents and any TBE congregant/family. You or your family will be matched with a resident who could use an occasional visit to bring them some much needed happiness. You would commit to visit your "mensch match" at least once a month. You can bring activities or games to play, books to read, or even a special treat to eat together. Even just stopping by briefly to say hello will make your resident feel special.

Please reach out to Jolie Genender at (847) 224-5052 if you're interested.

CHAVUROT FRIENDSHIP GROUPS KICK OFF EVENT! ✓

Sunday, March 10 at TBE

Adult Chavurot: 10 am–12 pm

School Family Chavurot: 11:45 am–1:45 pm

TBE is thrilled to start our journey to create meaningful connections and plant seeds of friendship! Join us on Sunday, March 10 for some bagels and bonding! Can't make it on March 10? No worries! You will have plenty of opportunities to be together and create your own meaningful meet ups as a Chavurah. For questions, accommodations, or more information about joining a Chavurot Friendship Group, contact Jessi Hersman at jhersman@templebeth-el.org.



**Beyachad ביחד
TOGETHER**



Sisterhood

LEARN MORE & REGISTER ► www.templebeth-el.org/sisterhood

 = Virtual attendance available

✓ = Registration required

SISTERHOOD EVENTS

BOOK GROUP ✓

12:30–2:00 pm

March 6

Hello Beautiful by Ann Napolitan

April 3

Bessie by Linda Kass

CANASTA MONDAYS ✓

10:15 am–2:30 pm

MITZVAH MADNESS ✓

March 7, 5:30–8 pm

COFFEE & KIBBITZ ✓

March 10, 9:30–11:30 am

LUNCH & LIBRARY ✓

March 19, 11 am–2 pm

Rescuer of Thousands by Irene Sendler

HAMENTASHEN HULLABALOO ✓

March 19, 7–9 pm

WOMEN'S SEDER ✓

April 10, 6–9:30 pm

COFFEE AND KIBBITZ ✓

April 14, 9:30–11:30 am

REUSE, RECYCLE RENEWAL WHITE ELEPHANT AUCTION ✓

April 18, 6–8 pm

SHOWTIME WITH SISTERHOOD DINNER AND A MOVIE ✓

April 30, 5:30–9:30 pm



**GIFT SHOP SALE! ENTIRE MONTH OF MARCH:
15% OFF ALL PASSOVER ITEMS**

GIFT SHOP HOURS

Sundays: 9:30 am–12:30 pm

Tuesdays: 10 am–noon & 4–6 pm

Wednesdays: 10:00 am–noon

Fridays: Noon–2:00 pm

Support Sisterhood by buying Leider Garden Center
(1625 Leider Ln., Buffalo Grove) Gift Cards at the TBE
Gift Shop beginning April 2!

Men's Club

Co-Presidents: Ric Bachrach, Andy Cohen, Jack Kamm

LEARN MORE ► www.tbemensclub.com

'BOYS NIGHT OUT' DINNER & MARCH MADNESS NCAA BASKETBALL EVENT ✓

Thursday, March 21, 6:30 pm.

Players Pub & Grill, 1250 River Road
in Prospect Heights, Choose from 5
menu items w/soft drinks. \$22 per
person

SAVE THE DATE!

MEN'S CLUB SEDER AT TBE Monday, April 15, 6:30 pm ✓

\$36 per person.

Registration opens soon



New teams are
being formed for
entries into the
North Suburban Men's Club
Softball League

Please email Mark Trachtenberg
at cloverinsurance@gmail.com
if you are interested in playing
on the TBE Men's Club Softball
Team. Or call/text Mark at 773-
943-6812.

Games are on Sunday mornings
from May through August.

Coming Home

By Sara Reid

I'm just a little bit Jewish.

I chant the V'ahavta while I'm doing my laundry. Taylor Swift is not what plays on my car stereo... it's my "Jewish Music" playlist. This lovingly curated playlist is 3 hours and 29 minutes long and will keep getting longer. I like to call my story "Prayer through Melody." The "melody" came first, closely followed by the "prayer", and the two are forever intertwined.

At 3 years old, I was often seen dancing around my bedroom, singing along to my big 90's boombox.

A normal 3-year-old, right? Well, I was a bit different. By this age, I should have had an expansive vocabulary. But I mostly responded with a very tentative word or two, instead of age-appropriate, full sentences. However, as I bounced around my bedroom, I could confidently sing through an entire Disney soundtrack with no problem. I learned to sing far before I learned to speak. Speaking words was hard... but singing them? Oh, that was as easy as breathing. The music just helped.

I did eventually find my spoken words. But I also found something else that would reveal itself to me much later: that music and melody would help me to "connect", and I feel this connection with every fiber of my being to this day.

Fast forward a couple of years, when I walk through the doors of an unfamiliar synagogue with my grandparents.

When I first heard the prayers and verses of Torah being chanted, I had no clue what the words meant. But I felt the notes and melodies in my bones. I was moved, physically, spiritually and emotionally and this I did understand. In that moment, music helped me find another something else; something that I would keep chasing and yearning for, throughout my formative years: prayer.

From then on, every time I entered a synagogue, a feeling of belonging washed over me, even though my parents never quite shared that same feeling of "being home". I attended services with my grandparents and Jewish friends, but I still didn't have my own synagogue home.....until TBE.



At age 23, I did a Google search: "synagogues near me". Temple Beth-El was the first result.

I was nervous during the car ride to my first Friday night Shabbat service; I had not been attending services regularly and didn't know what to expect. All I remembered was the melody of the Shema, so I sang it to myself to calm my nerves, and it helped... the music, the melodies...they always help.

That first Shabbat at TBE, in spring of 2017, I did a lot of listening. I recognized melodies, but not a lot of the words, so I hummed softly. Oh, but when it was time for the Shema...you better believe I sang loud and proud! I already knew I was home.

I quickly joined the TBE choir (big surprise...) and fell deeply in love with Jewish music, and "prayer through melody," as I've often heard Cantor Kahan call it. That 3-hour-and-29-minute "Jewish Music" playlist I mentioned earlier — I have Cantor to thank for exposing me to the majority of the tracks on that playlist. It's like he's a professional on the subject or something...

As you read this now in Spring of 2024, you may already know that you can find me at Temple Beth-El every Friday night (and a fair number of Saturday mornings). Whether I'm on the Bimah singing with Cantor, or helping lead the service, or sitting in the seats within the congregation...I now chant every word and sing every melody...with my whole heart. And I'm still home.

Behind The Scenes

TBE – WOW By Laurie Orenstein, Executive Director



Putting together a bulletin is no easy task, it starts months before you see it in your mailbox. There are people to reach out to, photos to gather and designers to collaborate with and that is just in the first

draft. As I read that first draft, I was taken aback at all that is contained in this issue. It is the story of our community and what a story it tells!

We are Vibrant Judaism at its finest there is so much happening in our congregation.

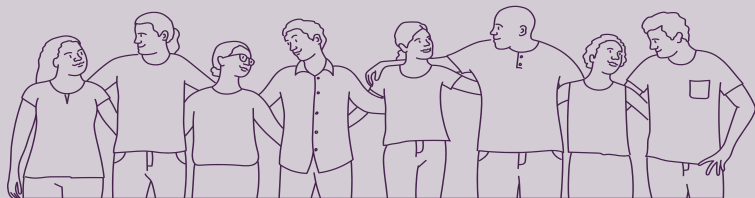
I am so proud of how far we have come in the last year as a community and that we are moving into a new phase of the community. As we look to the spring the story continues to be rich and vibrant — you can choose to partake in the Purim Spiel, join us at our congregational retreat, participate in our scholar in residence program or join us for Shabbat. These are just a few of the opportunities available to our members. As you will see, there are activities for all ages and interests and truly something for everyone. Please look and find the activities that

work for you. We are always planning new activities and functions and are grateful to our Sisterhood and Men's club for all the programs they are offering our members weekly. Have an idea, share it with us!

An important part of our story is our commitment to Israel and the pain it faces since October 7th. Over the past month our dedication has intensified with a successful campaign raising over \$18,000 for Magen David Adom and a successful event as a part of a partnership with our friends at Jewish National Fund. We continue to stay true to our commitment to Israel. Expect to see more opportunities in the coming months.

The more we do, the more we need each of you to get involved, volunteer and take part in all that is Temple Beth-El. Please reach out and get involved. We need you and we look forward to finding the perfect spot for you! Call us to be a part of the story!

I am so proud of our community, and we are so grateful to each of you for the stories that bind us together and make up the narrative of TBE. I look forward to all that lies ahead!



Are you ready to get involved?

Our Temple family is full of experts in many areas, and we need you. Please consider joining one of our teams/committees.

Email Laurie Orenstein, Executive Director at lorenstein@templebeth-el.org, to find the group that fits you best.

We can meet your needs with short-term tasks or long-term teams. Just reach out!

Caring
Communications &
Marketing
Community
Involvement/Activities
Education
Facilities
Finance

Green Team
Greeters
Inclusion
Israel
Membership
Religious Activities
Shabbat Services
Social Action



TEMPLE BETH-EL

Super SWEET XVI

BINGO NIGHT

BINGO COMMITTEE

Co-Chairs: Tracy Coleman,
Michelle Kotula

COMMITTEE MEMBERS

Steven Bradley
Paul Festenstein
Murray Gordon
Dan Hirschberg
Jack Kamm
Marty Pomerantz
Jay Reil
Neal Shanoff
Marcy Weinstein

BINGO VOLUNTEERS

Arnie Brown
Lee Boushie
AJ Coleman
Marlene Dolin
Marty Glick
Marla Gordon
Susan Hirschberg
Amy Huck
Mark Kessler
Josh Kotula
Laura Levine
Dan Orenstein
Travis Passman
Barry Rosenbloom

BINGO DONATORS

ABT Appliances
Barnbabys
Bowlero
Cheers to Cheese
Chicago Boomers
Chicago Dogs
Chicago Wolves
China Chef
Chinese Munch Inn
Classic Bowl
The Clothes Store
Continental Restaurant
Crabby Abbey Baby & Kids
Cruise Planners
D'Agostino's
Dengeo's
The Diamond Family
Doodlebugs
Dorfler's Meat Market
Fleming's Prime Steak House
Georgie V'S
Glenview Smile Today
The Golf Factory
Gordon Associates
Greek Feast
Grill House
Half Price Books
Heinin's Bannockburn

Jewel

Jimmy Thai's
Benji Kleiman
Kidtoure Designs
Lettuce Entertain You
Men's Club
Nails By Design
Ed Nickow
Nino's Pizza
North Branch
Northbrook Park District
Oceanique
Original Bagel & Bialy
The Painted Penguin
PRP Wine International
Renaissance Chicago -Glenview
Suites
Renaissance Chicago -
North Shore
Smiles of Buffalo Grove
Sunset Foods
Sweetucandles
TBE Bakers
TBE Sisterhood
Trattoria Oliverii
Viccino's
Vino Del Sol
Wick 'N Ore

**Temple Beth-El is proud to sponsor a film
at the Chicago Festival of Israeli Cinema.**

TBE will sponsor the April 14, 2024, showing of "The Children of Nobody", at 1pm at The Landmark on the Glen. Individual tickets will be on sale beginning 2/28. For more information about the movie, visit israelifilmchi.org.

If you would you like to be a TBE patron and receive 2 tickets, visit:

www.templebeth-el.org/event/chicago-israeli-film-festival---tbe-sponsored-movie-the-children-of-nobody.html.

Limited patron opportunities are available for \$100



Dedicated Donations

Received October 18 – November 28, 2023

TO MAKE A DONATION:

www.templebeth-el.org/donate

or see page 18

A JUST HARVEST

For the *yahrzeit* of

Sylvia Levy from Diane & Dean Shaw

In honor of

The birth of our granddaughter, Gloria Estelle Marlowe and proud parents, Alan and Jodie Marlowe, great-grandparents, Herb and Sylvia Wolfson, grandparents Kevin and Ilene Ray from Craig and Debbie Marlowe

Fred Rosenberg's birthday from Ira and Lynn Lawrence

Rosalie Ulrich on her 99th birthday from Jody Moore

The B'nei Mitzvah of Olivia and Evan Salasche from

Renee and Lorry Salasche

Barb & Tom Harris

In loving memory of

Max Gordon from Jeff Gordon

Clara Jellinek from Wendy Kaufman and Lee Boushie

BLITZ FAMILY CHILDREN'S CULTURAL ARTS FUND

In loving memory of

Jennifer Lewis, beloved niece of Jerry and Sandy Lewis from Alan and Caron Blitz

Clara Jellinek from Janice & Howard Hadesman

Sue Pinsky Gardner from Janice & Howard Hadesman

Marion Siegel from Janice Hadesman

Monica Toppel from Janice Hadesman

Fey Ruback from Janice and Howard Hadesman

Jennifer Lewis from Janice and Howard Hadesman

CANTOR KAHAN'S DISCRETIONARY FUND

For the *yahrzeit* of

Cele Schwartz from Charles & Donna Schwartz

In appreciation of

Cantor Kahan for the beautiful Shiva Minyan from George & Nancy Vizer

In honor of

Sara Fueston for her beautiful voice during Shabbat Services on December 29, 2023 from

Bruce & Dede Levine

Craig Scheidecker from Penny Brichta

The Bat Mitzvah of Anna Kessler from Sheryl &

Nicolas Kessler

In loving memory of

Daniel Zimmer from Ellen and Seth Zimmer

Clara Jellinek from Joanne and Gordy Levine

Jennifer Lewis from Joanne and Gordy Levine

FREE WILL

In loving memory of

Clara Jellinek from Jerry and Sandy Lewis

MAGEN DAVID ADOM

For the *yahrzeit* of

Richard Caitung from Arlene Caitung

Rosalind Hahn from Craig and Fern Hahn

Robert Moyer, father of Debbie (Craig) Marlowe from Debbie Marlowe

Harriet Hirschberg from Eileen and Chuck Kuenneth

Stacy Foltz from Eileen and Chuck Kuenneth

My mother, Evelyn Robin from Patricia and Allen Robin

For the *yahrzeits* of

Sarah Rubinstein and Estelle Bradley from

Janice and Steve Bradley

Our beloved grandfather, Harvey Silvar and our

beloved grandmother, Lillian Hyman from

Scott and Debbie Golan

In honor of

Magen David Adom from Benjamin & Alison Margolis

Susan Hirschberg's birthday from Eileen

and Chuck Kuenneth

The *Yahrzeit* of Sandy Levy from Jerry Levy

Magen David Adom - on behalf of the Styled Cookie

Hanukkah Cookie Kit Fundraiser

Laura Perpinyal from The TBE Teachers

Jessi Hersman from The TBE Teachers

In honor of the birth of

Gloria Estelle Marlowe from Janice and Steven Bradley

In loving memory of

My husband, Osvaldo Rubinstein from Alicia Rubinstein

Jennifer Lewis from Amy Huck

Clara Jellinek from Amy Huck

Marion Ruth Siegel from Amy Huck & Family

Fey Ruback from Amy Huck

Sue Pinsky Gardner from Cheryl and Bruce Grossman

Clara Jellinek from Dan & Cindy Wolf

Sue Pinsky Gardner from Deb Kushner

Edith Poole from Fern and Craig Hahn

Jennifer Lewis from Fern and Craig Hahn

Sue Pinsky Gardner from Joan & Richard Shapiro

Larry Lauwasser from Leah Goldberger

Jennifer Lewis, beloved niece of Jerry and Sandy Lewis from Rand and Marla Brichta

Emily Alper from Sally and Steve Lane

Clara Jellinek from Sally and Steve Lane

Clara Jellinek from Sharon Gross

MATTHEW SCHAFFER-SCHWARTZ

TIKKUN OLAM AWARD FUND

In loving memory of

Clara Jellinek from Jerold & Evelyn Levin

Sue Pinsky Gardner from Jerold & Evelyn Levin

MEMORIAL FUND

For the *yahrzeit* of

Jack Salkin from Leslie Dubin

In honor of

Clara Jellinek from Michael Richmond

Jennifer Lewis from Samantha Herscher

In loving memory of

Clara Jellinek from Barbara Berman and Fred Rosenberg

Sue Pinsky-Gardner from Brian and Sue Ehlers

Ellen Liss from Donna Blumberg

Clara Jellinek from Edward & Lauren Levy

Clara Jellinek from Elliot & Joy Bruckman

Fey Ruback from Elliot & Joy Bruckman

Gilbert Levy from Sarah and Erick Weingart

Sue Pinsky Gardner from Herbert Cohen

Monica Toppel from Holly & Phil Hamburg

Fey Ruback from Holly & Phil Hamburg

Clara Jellinek from Jami and John Donohue

Clara Jellinek from Jennifer and Neil Stein

Gilbert Levy from Jim & Wendy Phillips

Fey Ruback from Leslie Hanus

Fey Ruback from Lonni and Scott Glickson

Clara Jellinek from Pam & Mark Friedman

Jennifer Lewis from The Sandlow Family

Clara Jellinek from Sandy and Alan Jourdan

MEMORIAL PLAQUE

In loving memory of

Dr. Osvaldo Rubinstein from Javier & Lisa Rubinstein

MILTON STEINBERG EDUCATION FUND

In honor of

Fred Rosenberg from Zachary Ellman

In loving memory of

Marion Ruth Siegel from Holly & Phil Hamburg

Marion Ruth Siegel from Leslie Hanus

Marion Ruth Siegel from Loren and Jim Elliot

Marion Ruth Siegel from Shirley Kreisman

PERPETUATION FUND

In honor of

Randy and Sandy Barr's 50th anniversary from

Jerry and Sandy Lewis

Marla and Rand Brichta's 50th wedding anniversary

from Jerry and Sandy Lewis

Don Leftwich's 90th Birthday from Randy Sheridan

& Ralph Bergen

In loving memory of

Sue Pinsky Gardner from Joan and Ed Freud

PHYLLIS NATALIE PODOLSKY LIBRARY FUND

For the *yahrzeit* of

Lawrence Lerner from Jeff Lerner & Family

RABBI HELBRAUN'S DISCRETIONARY FUND

For the *yahrzeit* of

Marlene Plotkin beloved mother of Dede (Bruce) Levine

from Dede & Bruce Levine

Joseph Schwartz from Charles & Donna Schwartz

Sigmund Wolken from Hal & Cindy Wolken

Jerry Siegal from Ronald & Sherry Stewart

For the *yahrzeits* of

Rose Norensky & Seymour Noren from

Joseph Noren & Marnie Miller

In appreciation of

Rabbi Helbraun from Nancy & Jay Reil

In honor of

Gloria Estelle Marlowe, granddaughter of

Craig & Debbie Marlowe from Bruce & Dede Levine

Temple Beth-El from David Altman

Max Noren's Bar Mitzvah from Joseph Noren &

Marnie Miller

Donald Leftwich's 90th Birthday Celebration

from Lester Bernstein

In loving memory of

Jerry and Sandy Lewis's niece Jennifer Lewis from

Audrey and Len Rubin

Sam Sobelman from Barb & Jeff Gordon

Clara Jellinek from Barb and Tom Harris

Marion Ruth Siegel from Barb and Tom Harris

Sylvia Berman from Barbara Berman

Jennifer Lewis from Debbie & Mark Glickman

Sue Pinsky-Gardner from Faryn Rudnick

Jennifer Lewis from Gerald & Sandy Lewis

Sue Pinsky Gardner from Glorya Spero

Barbara from Hal & Cindy Wolken

Sue Pinsky Gardner from Holly & Phil Hamburg

Morris Kagan from Jeff Gordon

Tillie Morayniss Hochman from Joel & Janet Hochman

Sue Pinsky Gardner from Judy & David Rosen

Sue Pinsky Gardner from Leslie Hanus

Jennifer Lewis from Renee and Renee Cohen

SISTERHOOD

For the *yahrzeit* of

Sylvia Farber from Charles & Donna Schwartz

In appreciation of

Leslie Schlesinger from Nancy & Jay Reil

SOCIAL ACTION FUND

For the birth of

Gloria Estelle Marlowe, granddaughter of Debbie

and Craig Marlowe from Mindy & Mark Kessler

In honor of

Don Leftwich's 90th birthday from Bob Kaufman

Randy & Sandy Barr's 50th Wedding Anniversary

from Lisa & Robert Held

Tracy Coleman for chairing Bingo Night from

Terry and Susan Spier Chapman

In loving memory of

Jennifer Lewis from Irwin & Leslie Leiter

Clara Jellinek from Susan Levin

TEMPLE BETH-EL ENDOWMENT FUND

In loving memory of

Clara Jellinek from Amy and Rich Noren

Susie Pinsky Gardner from Barbara Berman

Jennifer Lewis from Cindy Schoenstadt

Robert Wolf from Fred Rosenberg

Caryn Rosenberg from Fred Rosenberg

Marion Ruth Siegel from Jerry and Sandy Lewis
Sue Pinsky-Gardner from Jerry and Sandy Lewis
Fey Ruback from Jerry and Sandy Lewis
Arlene Eaton from Scott & Lonni Glickson

TEMPLE BETH-EL GENERAL FUND

For the speedy recovery of

Craig & Robin Berk from Arthur & Anita Block

For the yahrzeits of

Marion Holtzman from Janice and Steve Bradley

In appreciation of

TBE from Symia Rosen

In honor of

The Weiser, Glickson and Schoenstadt Families
from Mark & Caryn Putterman

In loving memory of

Clara Jellinek from Douglas Schwartz & Cynthia Schaffer
Sue Pinsky-Gardner from Douglas Schwartz &
Cynthia Schaffer

Jennifer Lewis from Ellen and Michael Brottman
Marion Ruth Siegel from Linda and Mark Siegel

TORAH FUND

For the yahrzeit of

Polly Stewart from Vicki Bahnasy
Sadie Rix from Vicki Bahnasy

For the yahrzeits of

My father, Henry Stewart and my uncle, Sam Stewart
from Vicki Bahnasy

TZEDAKAH

In honor of

Isabelle Sophia House, our granddaughter from
Bruce & Lynne Glickson

YAHARZEIT FUND

For the yahrzeit of

Alex Nester from Alan & Barbara Hartstein
A. Robert Eisenberg from Arthur & Eileen Eisenberg
Barry Weiss from Bruce & Linda Gordon
Florence Weiss from Bruce & Linda Gordon
Adrian Fox from David & Beverly Fox
Rose Sugar Brown from Douglas Schwartz &
Cynthia Schaffer
Cynthia Geiderman Schwartz from Douglas Schwartz
& Cynthia Schaffer

Earl Harter from Douglas Schwartz & Cynthia Schaffer
Sarah Milstine from Eleanor Weiss Zoub
Michael Silverman from Georgean Goldenberg
Jack Elbin from Gerald Elbin
Miriam Leiter from Irwin Leiter
Daniel Witt from Judith Benjamin
Theodore Bakal Sophian from Laurence Sophian
Laura Sophian from Laurence Sophian
Jennie Pohl from Noreen Brand
Mabel Sagaloff from Paul & Leslie Schlesinger
Fred Posner from The Posner Family
Judy Immergluck from Robert Kulasik
Joan Steinberg from Roger & Ellen Sharpe
Robert Kaiser from Rosely Kaiser
Julius Kaplan from Sanford Barr
Bernard Kreisman from Shirley Kreisman

For the yahrzeits of

Rose Silberberg, Lois Bloom & Morris Silberberg
from Donna Blumberg
Abraham Friedland, Martin Greenberg, Hymen Greenberg,
Ida Greenberg, Gertrude Friedland Grodberg, Irving
David Grodberg, Betty Ruth Hollander, Milton B.
Hollander, Lena Hollander & Harry Hollander from
EvaLynn Greenberg
Arlene Kahen from Gary & Robin Kahen
Sarah Frishberg, David Frishberg & Stephen Kaufman
from Gerard & Terry Moons
Morris Krugman and Ronald Feigenbaum from
Linda & Larry Simon

In honor of

Elizabeth Parnus from Faina Lekakh

In loving memory of

Salomon Stein from Janet Stein
Larry Silver from Jeffrey & Kristina Silver
Sophie Simon from Linda & Larry Simon
Baby Pearl Keefe from Rai-Ellen Copeland-Keefe
Jack Salkin from Steven & Julie Rifkin
Howard Blumenthal from Susan Coren
Neal Spero from Kenneth & Carolyn Spero

YOUTH OF BETH-EL

For the yahrzeit of

My grandmother, Rose Robin from Allen and
Patricia Robin

Providing Notary Public Services Since 1965



Contact Fred R. Rosenberg
fredfox18@comcast.net
312-532-2457

No Fees To Temple Beth-El Congregants
(Donations to TBE Education Fund Appreciated)

A colorful advertisement for Mitzvah Photography by Annette Leibovitz. The background is a vibrant rainbow gradient. On the left is a black and white image of a camera. The text in the center reads "Mitzvah Photography Annette Leibovitz" in a large, elegant font. Below this is the website "www.MitzvahPhotography.com" and the email "mitzvahphoto@aol.com". At the bottom, the phone number "847-913-5588" is listed next to the phrase "Stress Free Photography!". Social media icons for Instagram and Facebook are at the bottom, with links to "instagram.com/AnnetteLeibovitz" and "facebook.com/MitzvahPhotographyAnnetteLeibovitz".

Good Things are Happening!



Engagements

Mazel Tov to Lori & Joel Haberman on the engagement of their daughter Suzanne to Daniel Vargo — November 11, 2023

Mazel Tov to Dede and Bruce Levine on the engagement of their daughter Lauren to Seth Steele — November 29, 2023

Mazel Tov to Karyn and Alan Lev on the engagement of their daughter Samantha to Danny Metter — December 15, 2023

March/April B'nei Mitzvahs

March 2: Ariel Sabin

March 9: Ethan Kaufman

April 13: Olive Treutler

Babies

Mazel Tov to Kimberley & Jerry Levy on the birth of their granddaughter Peyton Quinn Kulig born to parents Courtney & Zach Kulig — December 1, 2023

Mazel Tov to Debbie and Craig Marlowe on the birth of their granddaughter Gloria Estelle Marlowe born to parents Alan and Jodie Marlowe — December 29, 2023

Mazel Tov to Grandparents Laurie Azriel Prager and Howard Prager and Aunt Annie Azriel on the birth of Eliana Abigail Azriel to parents Rabbi Ben and Dr. Rachel Azriel — January 15, 2024

Mazel Tov to parents Melissa & Jason Gluskin and big sister Violet on the birth of Delilah Clara Gluskin — February 11, 2024

Milestone Anniversaries

March

Melissa & Jason Gluskin — 10 years

Dena & Sam Berkman — 10 years

Kelly & Alan Kaufman — 15 years

Alexis & J. David Jarrett — 20 years

Rachel & Scott Kempler — 20 years

Rochelle & Joel Kornreich — 40 years

Pam & Howard Korentha — 40 years

Marlynn & Robert Fisher — 45 years

Cindy & Hal Wolken — 50 years

Paula & Robert Pivar — 70 years

April

Jessica & David Gorelick — 10 years

Troy & Tiffany Larkowski — 20 years

Janice & Douglas Berman — 35 years

Wendi & Thomas Burnstine — 35 years

Barbara & Steven Dubrow — 35 years

Janice & Steven Bradley — 40 years

Erica & John Sinsheimer — 45 years

William & Ilene Heinrich — 50 years

Special Accomplishment

Mazel Tov to Shayna Kamm, granddaughter of Marsha and Jack Kamm, on being named one of the honorees of The 18 Under 18 JUF Springboard Award, which recognizes inspiring teen leaders who represent different aspects of our community, all working to make our community a better place.



Please contact Holly Hamburg to share your good news at (847) 205-9982, ext. 207 or hhamburg@templebeth-el-org.



CALLING ALL NEW TBE MEMBERS!

Temple Beth-El welcomes all new members with a special Shabbat Welcome Basket. If you have not yet received your basket, please give us a call or send us an email to schedule a time for you to stop by the Temple during business hours so we can officially welcome you to the TBE Community with a new member basket!

Call Holly at (847) 205-9982, ext 207, or hhamburg@templebeth-el.org

facebook®

Join Our
Community
Connection
Facebook Group.



TBE'S BLOOD DRIVE



The Temple Beth-El Sisterhood is proud to report that we collected 53 pints of donated blood (our goal was 48) at our annual blood drive in memory of Robert Kaiser, which was held on January 28.

We would like to thank Linda Goldman, Don Solomon, Rosely Kaiser, Amy Huck, Debbie Marlowe, and Marcy Weinstein for their assistance in promoting and/or volunteering on the day of the event. We also thank Upper Crust Bagels in Northbrook for their generous donation of bagels. And a HUGE nod to Joan Freud for coordinating another successful Blood Drive for TBE!

We gratefully acknowledge the following people who donated (or attempted to donate) their blood. We appreciate their time and effort which enabled us to achieve a successful drive:

Howard Axe
Marcey Barichello
Randy Barr
Sandy Barr
Scott Baum
Michael Bavier
Corwyn Berger
Barbara Berman
Lee Boushie
Barry Brotine
Dana Davis
Tom Ennessy

Barbara Ezell
Paul Festenstein
Joan Freud
Debbie Glickman
Larry Goldfine
Craig Hahn
Jon Hattenbach
Julie Heckman
Rabbi Sid Helbraun
George Heyman
Jane Heyman
Frank Huck

Ryan Huck
Harold Israel
Rosely Kaiser
Laura Kalo
Dave Kanarek
Marcia Kanarek
Wendy Kaufman
Mark Kessler
Benjamin Kleiman
Chuck Kuenneth
Deb Kushner
Steve Lane

Shel Leshner
Jasmine Liu
Chris Maisch
Martin Marks
Debbie Marlowe
Gene Moskowitz
Jen Polatsek
Bob Resis
Louise Resnick
Bennett Rodick
Bruce Sandlow
Donna Schwartz

Catherine Silver
Crystal Simmons
Brad Sloan
Don Solomon
Amanda Sussman
Dana Tamez
Mark Trachtenberg
Anna Treutler
Stacy Wegener
Bruce Werner
Kyle Wiemann
Stefani Wiemann



Eat at your favorite local restaurants and TBE will get a percentage of total sales—the perfect excuse to eat out or order in! Mention TBE fundraiser when you order.



March 5
Buona Beef



April 14
Lox Box



Chicago Jewish Funerals

is the proud provider of the
Temple Beth-El Funeral Plan

David I. Jacobson
Founder

Jeremy Seaver
Funeral Director

William J. Rubin
Funeral Director



The way it should be.

Simcha Frank
Funeral Director

Susan Winkelstein
Funeral Director

Yehuda Polstein
Funeral Director

CARING FOR A QUARTER OF A CENTURY.

Chicago Jewish Funerals has been privileged to serve our community for 25 years.
We continue to be humbled by those whom we have been called upon to serve
and to the leaders and organizations with whom we are honored to share this vision.



Michael Rubenstein

Family Service Counselor

Shalom Memorial Park
Shalom Memorial Funerals
(847) 668-2724
mRubenstein@Shalom2.com

Helping our community plan their
Cemetery and Funeral Arrangements

Proud to be a Beth-El Congregant for 19 years



Ron Bernardi

Servant

Community Service Representative

1127 Church Street • Northbrook, Illinois 60062
Tel: (847) 272-7700 • rbernardi@sunsetfoods.com

Jimmy Thai

www.jimmythaideerfield.com

405 Lake Cook Rd
Deerfield, IL 60015
(224) 235-4650



Mazelography

B'nai Mitzvah Photography

847.708.8219
Sara@mazeltography.com
www.mazeltography.com



WE HELP FAMILIES AND BUSINESSES WITH LONG TERM CARE PLANNING SINCE 1975

Why Choose Gordon Associates?

EXPERTISE

PERSONALIZED SERVICE

EDUCATION

We specialize in:

- Long Term Care Insurance
- LTC Insurance Policy Consulting
- LTC Insurance Claim Consulting
- Medicare Supplements
- Life Insurance
- Disability Insurance
- Annuities
- Short Term Care

We are a great
resource for finding
caregiving solutions
in the Chicagoland
area!

“Gordon Associates is my go-to recommendation for all my readers who ask about Long Term Care Insurance. And I put my money where my mouth is - I purchased my own LTC policies from them, too!”

- Terry Savage
Personal Financial Expert



5 STAR RATED

By advisors and clients



Gordon
ASSOCIATES
Long Term Care Planning Experts
SINCE 1975

SCAN HERE!



PROUD TO SUPPORT



Contact Temple Member Brian Gordon for more information:

847.940.8866 | GALTCl.com

LICENSED NATIONALLY

In California DBA GALTCL INSURANCE SERVICES - CA License# OE81056



Proud to offer a **Temple Beth-El Funeral Plan**

Having funeral services in the Shalom Memorial Chapel
means more time to spend with loved ones
and less time traveling in procession



Shalom Memorial Funeral Home
Shalom Memorial Park

1700 West Rand Road, Arlington Heights, IL 60004
(847) 255-3520 - www.Shalom2.com

FIND YOUR HAPPY PLACE



CRUISE PLANNERS
COMPLETELY PERSONALIZED VACATIONS


— ★ ★ ★ —
VETERAN
OWNED BUSINESS

JOSHUA & STEPHANIE BRAND

Your Luxury Land & Cruise Experts!

(847) 786-2470 - Full Service Luxury Travel Agency

www.jbscruiseandtravel.com | joshua.brand@cruiseplanners.com

 JBSCruisePlanners  JBSCruisePlanners

FLST# 39086, CST# 2034482-50, HST# TAD-7056, WAST# 603-390-504

Our clergy and staff are here for you!



Rabbi Sidney Helbraun
Senior Rabbi
RabbiHelbraun@templebeth-el.org
(847) 205-9982 ext. 204



Laurie Orenstein
Executive Director
LOrenstein@templebeth-el.org
(847) 205-9982 ext. 211



Elian Yarden-Oppenheim
Accounting Manager
Elian@templebeth-el.org
(847) 205-9982 ext. 209



Cantor Adam Kahan
Cantor
CantorKahan@templebeth-el.org
(847) 205-9982 ext. 206



Leslie Hanus
Clergy and Lifecycle Coordinator
LHanus@TempleBeth-El.org
(847) 205-9982 ext. 202



David Shuman
Facility Manager
DShuman@templebeth-el.org
(847) 205-9982 ext. 221



Laura Perpinyal, RJE
Director of Congregational Learning
Lperpinyal@templebeth-el.org
(847) 205-9982 ext. 212



Holly Hamburg
Membership Coordinator
HHamburg@TempleBeth-El.org
(847) 205-9982 ext. 207



Jessi Hersman
Education and Engagement Coordinator
Jhersman@templebeth-el.org
(847) 205-9982 ext. 205



Rabbi Victor H. Weissberg
Rabbi Emeritus
(847) 205-9982 ext. 202



Linda Goldman
Communications and Event Coordinator
LGoldman@TempleBeth-El.org
(847) 205-9982 ext. 208



Lisa Michael
Operation and Education Coordinator
LMichael@templebeth-el.org
(847) 205-9982 ext. 210

CONTACT US

(847) 205-9982

www.templebeth-el.org

3610 Dundee Road
Northbrook, IL 60062

TBE Board of Directors

Amy Huck
President

Ken Traub
Executive Vice-President

Kelly Kaufman,
Membership Vice-President

Howard Korenthal
Financial Vice-President

Sandy Ridker
Education Vice-President

Barbara Rosenberg
Program and Activities
Vice-President

Alan Stone
Facilities Vice-President

Don Solomon
Immediate Past President

Lani Hart
Recording Secretary

Members-At-Large

William Boushie

Andrea Brown

David Cohen

Jolie Genender

Ronald Jacobson

Jack Kamm, Men's Club

Gerald Lewis

Benjamin Margolis

Fred Rosenberg

Leslie Schlesinger, Sisterhood



*Vibrant Judaism
— Welcome Home*

NON PROFIT ORG.
US POSTAGE
PAID
SKOKIE, IL
PERMIT NO. 269

3610 DUNDEE ROAD, NORTHBROOK, IL 60062

(847) 205-9982 | templebeth-el.org



Temple Beth-El is an inclusive Jewish community open to people of all ages, races and abilities, welcoming interfaith families, people who are single, partnered and LGBTQIA+.

The Temple Beth-El Bulletin is published bi-monthly. Letters, comments and news about the Temple are always welcome. Please send via email to office@templebeth-el.org. Bulletins may also be viewed on our website.

Thank you **TBE** *Community*

for your generous donations
to our Magen David Adom Fund
and exceeding our goal
of \$10,000.

**We raised over
\$18,000!**

