

# Vibrant Judaism — Welcome Home

January/February 2024 • Tevet/Sh'vat/Adar 5784 • Volume 282



## Inside

Services	2	Adult Education Programs	8	Contributions	14–15
From the Rabbi's Study	3	Tikkun Olam / Social Action	9	Good Things Are Happening and New Members	17
March on Washington	4	Sisterhood	10	Staff & Clergy Contacts and TBE Board of Directors	23
Cantor's Corner	5	Men's Club	10		
Education Update	6	Making the Call	11		
Early Childhood, Youth & Teen Programs	7	Behind the Scenes	12		
		Restaurant Nights	13		



**Beyachad** ביחד  
**TOGETHER**

Join  
Us!



= Virtual attendance available  
via Zoom or Livestream



= Registration required

Go to ► [www.templebeth-el.org](http://www.templebeth-el.org)  
or call (847) 205-9982 to register  
for programs, receive links for virtual  
attendance, or more information.

## Services

January and February 2024

Temple Beth-El warmly welcomes our congregants to a wide variety of worship opportunities. From casual services to services with a more formal feeling, from family services to adults of all ages, Temple Beth-El has a worship experience that is right for everyone.

► [TempleBeth-El.org/livestream](http://TempleBeth-El.org/livestream)

### KABBALAT SHABBAT

Fridays, January 5, 12\*, 26\*\*, February 9, 23

Early Oneg, 5:30 pm, Service, 6:00 pm

#### \* Special Shabbat Service on January 12

Celebrating MLK Day featuring speaker Judy Wexler followed by 7:30 pm Dessert Oneg and Q & A Session see page 8

#### \*\* Shabbat Shira on January 26

Musical service celebrating the Song of the Sea and the musical gifts that exist at TBE

### SHABBAT YELADIM ✓

Friday, February 2

Pizza Dinner, 5:30 pm

Service, 6:00 pm followed by dessert Oneg and age-appropriate art projects

### KABBALAT SHABBAT

Friday, February 2

Service with Anniversary Blessings, 7:30 pm

Late Oneg, 8:45 pm

### FAMILY SHABBAT

Early Oneg, 5:30 pm

Service, 6:00 pm

Friday, January 19: 6th/7th Grade service participation and Birthday Blessings

Friday, February 16: 3rd Grade service participation and Birthday Blessings after 5:15 pm 3rd Grade Family Dinner

### B'NEI MITZVAHS / SHABBAT SERVICES

Saturdays, 10:00 am

February 10: Abby Posner

February 17: Ethan Hogendorp

February 24: Fawn Belofsky

### CASUAL MORNING MINYAN SHABBAT

Saturdays, 9:30 am

January 6, 13, 20, 27

February 3, 10, 17, 24



To view events by date, scan this QR code or go to [www.templebeth-el.org](http://www.templebeth-el.org) and click "Calendar".



Purim  
Celebration

Hands-On activities  
Spiel and Snacks  
Fun for ALL ages!!

SAVE THE DATE!  
Saturday  
March 23  
4 pm



# From the Rabbi's Study

## Tu B'Shevat

By Rabbi Sidney M. Helbraun



I remember a short visit to Israel in January, about a decade ago. I was staying in Jerusalem, looking for lunch and turned down Ben Yehudah Street where I happened upon a carnival. Well, it wasn't exactly a carnival, but it was a street scene unlike anything I expected. There were people dressed as plants and flowers, sprites and fairies, prancing and dancing down the road, along with a collection of people selling beautiful blooming plants. The sun shined brightly, the temperature was delightful, and an average day had taken a turn toward the magical. Yes, without realizing it I had stumbled upon a Tu B'Shevat celebration.

I have no doubt that the contrast between that scene and the one that will play out here on January 25th will not be more different. Instead of the early stirrings of Spring, we are much more likely to be dealing with — okay, trying to survive, a snowy, frozen landscape. That's just how it is when Tu B'Shevat — the 'new year' of the trees arrives in Chicago.

**And yet, despite the contrast between Midwest Winter and Middle Eastern Spring, the two environments still share something in common.**

For despite our frozen tundra, the truth is that even in the midst of winter we can still find new life and growth. Rather than looking for it to appear before

our eyes, we have to take it with a grain of faith that a few feet down, hidden from our view, roots are stretching and growing to allow more sturdy trunks and fruitful yields in the months ahead.

As Jews, as lovers of Israel, these past few months have been difficult, trying times that have left our hearts feeling the cold of winter since back in October. And yet, while it hasn't been apparent to our eyes, despite the pain and heartache, the death and destruction, I think it's possible — I pray it's possible, that despite the picture of the landscape we see, there's a chance that somewhere down below, hidden from view, things are shifting, changing and growing.

**Possibilities for a different future are emerging. Opportunities that hadn't been present before are being created, waiting to spring forth in the coming months.**

Obviously, it's still too early to know. After all, the ground that lies before us is still frozen, covered in snow. But hope springs eternal, and it's well past time for tomorrow to play out differently than how life has gone for the past 75 years. At the very least, it's something that we can pray for.

May winter pass, and the growth of a new season spring forth soon.





# Stand Up For Israel

We are proud that so many Temple Beth-El members were present among the nearly 300,000 who gathered in DC on November 14th to support Israel and take a stand against hatred and antisemitism. Thanks for sharing your experience with all of us.



Tiffany Larkowski, Bill Adolph, Allison and Noel Pearlman, Jeremy Iskowitz



Jill Weininger

Judy Rosen



Leslie Pinto and Friends

**Leslie Pinto:** I went to DC to show the world that the Jewish people are ONE! Our community is strong and proud and we will always shine our LIGHT loudly and proudly. I went to DC to support Israel, stand up against antisemitism and show my kids that one voice matters. One single voice has the power to change many. I was one of the 300,000 people there demanding peace, love and NO hate. It meant everything to me to stand with our community and fight for what we know is right. Am Yisrael Chai.

**Jill Weininger:** The highlight among many speakers was 290,000 people singing HaTikvah. Overall it was a great experience, just felt like such an important moment in the history of American Jews and it felt like we were part of actively shaping our destiny rather than letting it happen to us. It was so peaceful and calm, which was a surprise and a testament to our people. All sorts of Jews and their supporters bringing only positive energy. It was about what we want and deserve, not what we hate. We need and deserve to live in peace and security. Israel deserves the right to defend its sovereignty. We need our hostages back. We deserve and need peace on Israel's borders. Kudos to the organizers and our U.S. government for making us feel safe throughout the day.

**Jon Hattenbach:** I decided to attend the "March" to be a part of the community (including our TBE community) and to stand up for Israel at this critical time. It was a very emotional day, but I felt immense pride in our huge presence at this critical time, to show our government leaders and the world the strength of our people. Being on the National Mall, looking out at the U.S. Capitol and Washington Monument while surrounded by 250,000+ Israel supporters and singing HaTikvah was an unbelievable experience!

**Judy Rosen:** I felt I "had" to be in DC for the March — not only to show my support in person for Israel and the hostages — but also as an example to friends and family. I was overwhelmed with the love for Israel that day — from all ages and stages, from all kinds of Jews and non-Jews — I spent the day right in front of the stage with about 20 BBYOers and BBYO staff — their passion, their commitment, their love was so infectious! To see them singing along and cheering and being so engaged was inspiring! It gave me hope for the future of Israel and of American Jewry!





## Cantor's Corner

My Musical Dance Partner by Cantor Adam Kahan

I had just met these musicians in Havana, Cuba, at a restaurant catering to tourists.

I was on a religious tour of the island,

and I was asked to bring in my guitar to play with the house musicians. I spoke no Spanish. They spoke no English. However, through very poor pantomime, and me playing a few chords, they seemed to understand a smidge of what I was trying to convey about the song I was about to play...a Latin-feeling composition I had come up with recently.

**As soon I started playing, this trip of amazingly talented players were right there with me.**

The song came alive, we were moving and grooving because — while we didn't speak the same oral language — we spoke a universal language of music. We could sense where each other was going with the tune. It was magical. It was like dancing, where one partner moves in and out of the space of their dance partner. It was elegant and invigorating.

**I had this exact same experience the moment I began playing with Craig Scheidecker, our amazing pianist at Temple Beth-El.**

With the added bonus of us being native English speakers, I have had the joy of dancing in music together with this immensely talented, patient, kind, and gracious artist. Craig simply has elevated every moment we craft in our services. I was saddened to learn that after nearly 15 years with our community, Craig will be stepping away to make available more time with his family. I was artistically crushed to hear this, but also instantly admired his walking of the walk, regarding the importance of our families in our own lives.

We are well underway to seek out the artist who will “take the bench” from Craig as he completes at the end of January. Meanwhile, we are planning on recognizing Craig, and all that he has brought to our community, at our “Shabbat Shira” services on Friday, January 26th. As we celebrate the Song of the Sea, and the biblical story of the Jews crossing the Red Sea, we hope you will join with us to celebrate this magnificent person who has so often raised us in song. See you there!





# Education Update *Planting For Our Future*

By Laura Perpinyal, RJE, Director of Congregational Learning

## **Why do we celebrate Tu Bishvat, the Birthday of the Trees, in the dead of winter?**

Because spring is just blooming in Israel!! Israel is the only country that entered the 21st century with a net gain in its number of trees, and every Tu Bishvat, when Israeli children plant hundreds of thousands of trees, it helps to contribute to that growing number.

Planting for our future is such a beautiful metaphor for Jewish Education. We can't possibly learn everything we need to know for our lifetime in just a few hours of school a week. But we plant literal and figurative seeds, we nurture our students to ask great questions, we create memorable moments that establish strong roots from which to grow. Trees live best in an ecosystem with other plants and animals; just as we need each other to be in a Jewish community!

Camp is one of the most amazing Jewish communities because we build it each and every summer. The community we create can only live at camp, by its very nature, it can't really be replicated elsewhere.

## **That said, we get the opportunity for a "taste" of camp when we go with our Temple Beth-El community for a weekend retreat!**

We can imagine being a camper in the summer, or we can hold the memories of when we were campers in the past. We create those memorable moments as a family, in a special place with our cherished congregational family.

It's an opportunity to plant seeds of friendship, of adventure, and of learning. It's a moment away that creates a special space that only lives there, but that we are in together. Being part of this immersive experience is something unique and not be missed!!

## **I hope you will join us for our Congregational Retreat at Olin Sang Ruby Union Institute (OSRUI) this coming March 15–17th.**



## **FAMILY WIMPLE MAKING EVENT** February 3, 4:00–5:30 pm



Join us for a Family Wimple Making Event! A Wimple is the name of the special fabric that wraps the Torah Scroll. Decorate one with your Hebrew Name and we will finish it with stitching, and you will be able to use it on the Torah Scroll for your Bar or Bat Mitzvah. This is an event for students of all ages and is guaranteed to be a special family experience. We will end the event together with Havdallah.



# Early Childhood, Youth & Teen Programs

✓ = Registration required

For more information on Youth and Teen Programs, contact Jessi Hersman at [jhersman@templebeth-el.org](mailto:jhersman@templebeth-el.org).

## SHABBAT YELADIM ✓

Ideal for children in 2nd grade and younger

Friday, February 2

5:30 pm Complimentary pizza dinner

6:00 pm Age appropriate and fun Shabbat experience with prayers, singing, story, craft and Oneg.

Join us as we celebrate Tu Bishvat, the birthday of the trees! Older siblings and grandparents are welcome to attend and participate.

## JBABY BROADWAY STORYTIME ✓

For ages 0–2

Spend the morning with your 0–2-year-old as our littlest Broadway fans are introduced to show tunes, characters and stories while Broadway musicals are brought to life by Stages Performing Arts. Each class incorporates activities that are designed to support your little one's physical, cognitive, social-emotional and language development. An age-appropriate story will be included to give you a chance to socialize too. Come meet other parents with children similar in age!

Movers and Shakers: 9:30–10:30 am

Babies: 10:30–11:30 am

Session 2: Wed., Jan. 10–March 13, 2024

10 classes. Cost: \$120

Session 3: Wed., April 10–May 29, 2024

8 sessions. Cost: \$96

## PAGE TO STAGE: TU BISHVAT ✓

For grades K–2

January 28, 1:00–3:00 pm

Cost is \$10 per child. Registration will close on January 25.

No food will be served at this event.

Calling all young actors in grades K–2! Together, with a Chicago teaching artist and director, you will bring a beloved Jewish story to life. Participants will use improvisation techniques to move through the story so each child will feel seen and celebrated. The program ends with a show for their families and friends to enjoy!

## CANVAS AND COCOA:

A TU BISHVAT CELEBRATION! ✓

Grades 2–4:

Sunday, January 21, 1:30–3:00 pm

Grades 5–7:

Saturday January 20, 4:15–5:45 pm

Grades 8–12:

Saturday, January 20, 5:30–7:00 pm

Cost is \$18 per participant and includes all materials needed, hot chocolate, and a meaningful piece of art to take home.

Registration will close on January 15.

Get ready for a brush with creativity at our first ever Canvas and Cocoa event! Our talented instructor will guide you step by step to craft your own masterpiece—a stunning Tu BiShvat tree that's as unique as you are. Sip on hot chocolate, and let your imagination burst onto the canvas. Registration is open to members and non-members, so bring a friend and join us at temple to paint, laugh, make memories and celebrate Tu BiShvat in a beautiful way.

KoBE (Kids of Beth-El) is programming created for grades K–7 and is the place for fun and social time with a Jewish twist! These events are a great opportunity to get to know each other outside of the classroom. Events are hands-on, drop-off and engaging!

ToBE (Teens of Beth-El): This programming is designed for our 8th–12th grade students and focuses on combining Jewish values, and leadership while celebrating our unique approach to exploring the world around us. Events and opportunities include social action work and meaningful experiences throughout Chicagoland. ToBE will also serve as leaders and creators for our KoBE programs.



# Adult Education & Programs

To view our Adult Education programs, scan this QR code or visit [www.templebeth-el.org/adult-education](http://www.templebeth-el.org/adult-education)



✓ = Registration required     = Virtual attendance available

## PARASHAT HASHAVUAH

(Weekly Torah portion)

with Rabbi Helbraun or

Cantor Kahan

Ongoing Saturdays

11:00 am–Noon

Join Rabbi Helbraun or Cantor Kahan for teachings from the weekly Torah portion. On mornings when there is a B'nei Mitzvah, Tom Burnstine will lead the class.

## RABBI HELBRAUN'S CLASS

MODERN RESPONSA ON

BIOMEDICAL ETHICS ✓ 

Mondays, 7:30–8:30 pm

## GRIEF SUPPORT GROUP

4th Wednesday of the month

7:00 pm at TBE

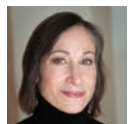
TBE has partnered with JCFS to provide members and the community with a professionally facilitated grief support group. If you are interested, please contact Marsha Raynes at JCFS at (847) 745-5408 or [MarshaRaynes@jcfs.org](mailto:MarshaRaynes@jcfs.org) for more information.

## SPECIAL MLK SHABBAT SERVICE

Friday, January 12

6:00 pm Service and Speaker

7:30 pm Q & A and Dessert Oneg



Judith Wexler will be making a presentation during this special MLK Shabbat Service.

Judy Wexler is a Vice President of Member Services for the North American Board of Women of Reform Judaism, which serves approximately 30,000 members. Judy is a past sisterhood president and past synagogue president of North Shore Congregation Israel in Glencoe, where she has been a member for the past 25 years. Judy is a former practicing attorney and middle school teacher. She currently helps prepare young adults for their B'nei Mitzvahs. TBE Sisterhood and Social Action Committee will sponsor a special Dessert Oneg and Q & A Session with Judy at 7:30 pm.

## SAVE THE DATES:

### SUNDAY NIGHT LIVE ✓

Sunday, January 28

Join us for our next Sunday Night Live featuring dynamic speakers, and lively discussions!

Details for the January program will be available soon.

### JNF SPEAKER PROGRAM ✓

Sunday, February 4

4:30 pm Speaker followed by Reception

Presentation followed by dessert reception. Details will be available soon.

See page 10 for more adult programming brought to you by Sisterhood and Men's Club!

## WEDNESDAY'S WINDOWS TO THE WORLD ✓

Monthly on Wednesdays, 1:30 pm

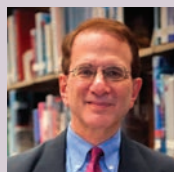


Meeting monthly for social and light educational experiences for adults. Each month there will be different speakers and topics that offer a “window” into a part of our world.



### January 17

Panel on Jewish Environmental Movements



### February 21

Barry Bradford is best known for leading national movements to reopen two cold cases from the Civil Rights Era — including the “Mississippi Burning” case. Through his commitment to justice and belief in the power of every individual to affect history, he brings conviction and passion to his message of leadership and personal empowerment.



# Tikkun Olam / Social Action

► [www.templebeth-el.org/social-action](http://www.templebeth-el.org/social-action)

## CARING COMMITTEE

**Are you looking for a great way to get involved?**

**Join our Caring Committee Beyachad**

Now more than ever people need a hand during these challenging times. Please let us know if you would like to volunteer to help our members most in need including wellness check-in calls, shopping, delivering treats to those who are ill, or helping with other requests. We especially need volunteers who are west of Milwaukee Avenue. Email Holly at [hhamburg@templebeth-el.org](mailto:hhamburg@templebeth-el.org).

## A JUST HARVEST ✓



**5th Wednesday and Thursday of the month**

Many of our students choose to decorate the Bimah for their B'nei

Mitzvahs with food baskets to represent their support of A Just Harvest. AJH's mission is to fight poverty and hunger in the Rogers Park and greater Chicago community by providing nutritious meals daily while cultivating community and economic development and organizing across racial, cultural and socioeconomic lines in order to create a more just society. For more information visit [www.ajustharvest.org](http://www.ajustharvest.org). Volunteer to shop and/or deliver food to A Just Harvest, the largest community soup kitchen in the Chicago area. Volunteers from Temple Beth-El join together four times a year to help feed those in need.

To participate in A Just Harvest shopping or delivery, register using this link: <https://www.signupgenius.com/go/5080C4FA8AF2DA02-ajustharvest>

## FEED MY STARVING CHILDREN



Many of our students choose Feed My Starving Children for their B'nei Mitzvah projects. FMSC believes hope starts with food and is dedicated to seeing every child whole in body and spirit. They work with food distribution partners that stay with communities for the long haul, empowering them to move from relief to development. To get involved, visit [www.fmssc.org/get-involved](http://www.fmssc.org/get-involved).

## PLEASE JOIN MENSCH MATCH!

Would you or your family like to bring more joy into the life of an elderly person? Teach your children about a different kind of mitzvah and enjoy a feel good experience?

TBE Sisterhood is partnering with Gidwitz Place for Assisted Living in Deerfield to create a one-on-one matching program for residents and any TBE congregant/family. You or your family will be matched with a resident who could use an occasional visit to bring them some much needed happiness. You would commit to visit your "mensch match" at least once a month. You can bring activities or games to play, books to read, or even a special treat to eat together. Even just stopping by briefly to say hello will make your resident feel special.

Please reach out to Jolie Genender at (847) 224-5052 if you're interested.

## CHAVUROT FRIENDSHIP GROUPS ✓

Beyachad! Together, we will welcome winter filled with warmth and connection with our new and improved small family group program called Chavurot (friendship groups). Through Chavurot, TBE members can get to know each other, connect in a variety of settings and build lasting friendships.

After you complete the registration survey and share all you can with us about you and/or your family, we will use this information to create meaningful Chavurot groups.

The goal is for each group to meet about once a month and do fun things together of their own choosing (ie. Shabbat Dinners, volunteering, casual playdates, cooking together etc.).

This year we will have opportunities for your Chavurah to participate together at Temple Beth-El events. For example, your Chavurah can request a table at the Annual Bingo Night!



If you are interested, please use the QR code to link to the registration survey or visit [www.templebeth-el.org/form/Chavurot-Program-2024.html](http://www.templebeth-el.org/form/Chavurot-Program-2024.html). For more information, please contact Jolie Genender at [joliegeneder@yahoo.com](mailto:joliegeneder@yahoo.com) or Jessi Hersman at [jhersman@templebeth-el.org](mailto:jhersman@templebeth-el.org).



**Beyachad ביחד  
TOGETHER**



# Sisterhood

LEARN MORE & REGISTER ► [www.templebeth-el.org/sisterhood](http://www.templebeth-el.org/sisterhood)

 = Virtual attendance available

✓ = Registration required

## SISTERHOOD EVENTS

### BOOK CLUB ✓

12:30–2:00 pm

January 10

Heaven & Earth Grocery Store  
by James MacBride

February 7

Dictionary of Lost Words  
by Pip Williams

### CANASTA MONDAYS ✓

10:15 am–2:30 pm

### COFFEE & KIBBITZ

Sundays, 9:30–11:30 am  
January 14, February 11

### LILITH SALON ✓

Thursday, January 11

Zoom Only

### SISTERHOOD SPONSORED FRIDAY NIGHT ONEG

Friday, January 12

### BAND TOGETHER FOR ISRAEL ✓

with Men's Club

Saturday, January 13

### LADIES LUNCH & LIBRARY EVENT ✓

Tuesday, January 16

### SISTERHOOD PLANTS THE SEED: TU BISHVAT BOARDS & BUBBLY ✓

Wednesday, January 24

### BLOOD DRIVE ✓

Sunday, January 28

### LOVE YOURSELF: EAT YOUR WAY TO A HEALTHY HEART ✓

Sunday, February 4

### SHOWTIME WITH SISTERHOOD: DINNER & MOVIE ✓

Tuesday, February 20



## GIFT SHOP HOURS

Sundays:

9:30 am–12:30 pm

Tuesdays:

10:00 am–noon & 4:00–6:00 pm

Wednesdays:

10:00 am–noon

Fridays:

Noon–2:00 pm



## Men's Club

Ric Bachrach, Andy Cohen, Jack Kamm, Co-Presidents

LEARN MORE ► [www.tbemensclub.com](http://www.tbemensclub.com)

### BAND TOGETHER FOR ISRAEL ✓

January 13, 6:00–10:00 pm  
at Temple Beth-El

Band Together for Israel is a great 'adults night out' of music, singing, dancing, dining, drinking and fun! Featuring TBE's own house band VINTAGE, sharing music of the 60's, 70's & 80's. We'll rock the night away and raise a few shekels to support TBE's Magen David Adom Fund. Suggested minimum donation is \$18/person, but please consider increasing your gift to \$50, \$100, \$200 or more.

Scan to register for  
Band Together for Israel





# Making A Difference: One Family's Story

The following account is bravely furnished by our members Jeff & Barbara Gordon who, like many Temple Beth-El members, have been closely connected to the war in Israel. Together we are all praying for the safe return of the hostages and for a peaceful resolution of this terrible conflict.

## Making the Call

I needed to call my sister.

It was Saturday morning, October 7th. I had just gotten up, turned on the tv and began flipping channels. My heart sank as I found CNN with the headline banner that read, "Israel at War". My sister Jan and brother-in-law Marty's younger daughter, Alana and grandson, Kol live in the Jerusalem Hills. Jan said that they had spoken with her and both she and Kol were safe and 'sheltering in place' in their apartment. They were scared, shaken but okay.

Alana was born on Long Island in 1981. Some years later Jan and Marty moved to Deerfield and then to Northbrook.

Alana celebrated her Bat Mitzvah atop Masada in 1994, moved to Be'er Sheva in 2006 at age 26 and was married in Israel in 2012. Kol was born in 2016.

**When the extent of the attack on October 7th was unfolding, Alana made the decision to try to get back to America. They were able to secure a flight to Budapest, then New York and finally to Chicago.**

Wanting to make a connection to a local synagogue, she called Temple Beth-El, thinking it was the one in Highland Park where they had once been members many years ago. When Jan told me the story, I told her that Alana had called Beth-El in Northbrook, where my wife, Barb and I are new members.

Holly Hamburg answered her call and made arrangements for her to visit. The red carpet was rolled

out for them, meeting with Holly, Rabbi and Cantor (hope I haven't left anyone out). Both Jan and Alana shared how they were

very appreciative with the outpouring of interest and concern.

At this point we had not seen them yet. We wanted to give them time to settle in and take stock of what had happened.

**We joined them at the children's service on November 3rd. There were hugs all around. We were so grateful to see them and know that they were safe. There were 10 of us and we sat around the table eating pizza and catching up.**

The children's service was very nice. The Rabbi had a little trouble keeping the little kids attention while reading a book about a giraffe, but to be honest, I didn't mind. They were little kids doing what little kids do. But they were safe and having fun, unaware of the chaos surrounding them.

After services we went to Max and Benny's where, over mushroom barley soup, chicken noodle soup, chicken fingers, egg white omelets and of course cheesecake, we continued our 'reunion'. Together we enjoyed lots of stories, lots of laughter.

After the meal, the hugs were special and long with plans being made to see each other again.

**In a world in turmoil, Temple Beth-El helped provide Alana and Kol with a connection to our faith and offered our family a safe haven in which to reunite and "catch up". We'll always be grateful.**

*A note to Temple Beth-El members:*

We know this is an extraordinarily difficult time for many in our community. We are here for you. Should you wish to speak with clergy or connect in various ways with our community please contact our office. Together we will find ways to navigate this shared, tragic experience and we'd like all of our community members to feel welcome to reach out if you need something.



# Behind The Scenes

By Amy Huck, President, Board of Directors

**Recently, I spent a Saturday morning at the Temple when two B'nei Mitzvah were taking place. As I sat in this bustling building waiting for the service to begin, I felt surrounded by energy and joy.**

In the Mishkan, attending the Bar Mitzvah of one of our newest members, I was surrounded by love. The feeling that morning encompassed the values and goals we have all worked hard to make real, "Vibrant Judaism, Welcome Home".

I am overwhelmed with gratitude for the strength, vitality, and enthusiasm in our congregation. In a little over 6 months, our congregation has grown by 30%. Our Religious School now serves over 250 children. We continue to be amazed at the turnout for programs ranging from adult education to Shabbat worship, to our March for Israel watch party, to Men's Club and Sisterhood events. Temple Beth-El is the place to be for Jewish life in greater Northbrook.

**None of this would be possible without each of you, our Temple Beth-El members. Thank you for sharing with us your time, your talents, and your treasures.**

I'm pleased to report that this year our single most important fundraising initiative, the Community Commitment Campaign, raised sufficient funds to support our programs and services this year. It is the contributions from you, our members, that allow us to provide high quality programs and services, maintain and enhance our building, and recruit and retain high quality staff and clergy that make Temple Beth-El the phenomenal home for vibrant Judaism we all love.

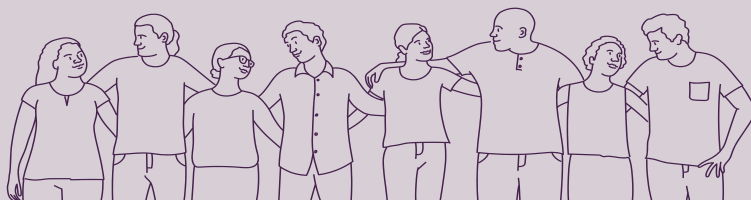
**We are a healthy and active Community, but we cannot rest on our laurels.**

Ensuring our long-term future must be our priority. We cannot take today for granted we must continue to build and develop all that we are as a congregation and a community. As such, our congregation is hard at work on the strategic plan that will lay the foundation for the next chapter of Temple Beth-El.

Many of you helped get this process started when you responded to the short questionnaire, we sent

out immediately following Yom Kippur. Thank you for participating — your input is vital! The response rate was incredible and the feedback we received is guiding the goals and priorities that this plan will strive to achieve. Ultimately, the strategic plan will give us a road map to build the congregational infrastructure and resources necessary to meet these goals together as a community. We look forward to keeping you informed as we move forward together.

In conclusion, I want to thank you for the choice you have made as a member of our sacred community. As board President, I am most grateful for the trust you have put into the leadership as we all go forward into the next stage of our temple. Welcome Home!



## Are you ready to get involved?

**Our Temple family is full of experts in many areas, and we need you. Please consider joining one of our teams/committees.**

Caring	Green Team
Communications & Marketing	Greeters
Community Involvement/Activities	Inclusion
Education	Israel
Facilities	Membership
Finance	Religious Activities
	Shabbat Services
	Social Action

**Email Laurie Orenstein, Executive Director at [lorenstein@templebeth-el.org](mailto:lorenstein@templebeth-el.org), to find the group that fits you best.**

We can meet your needs with short-term tasks or long-term teams. Just reach out!





Eat at your favorite local restaurants and TBE will get a percentage of total sales—the perfect excuse to eat out or order in! Mention TBE fundraiser when you order.

**Tuesday, January 9**  
**Jimmy Thai**  
 405 Lake Cook Rd.  
 Deerfield  
 224-235-4650  
[jimmythaideerfield.com](http://jimmythaideerfield.com)



**Tuesday, January 23**  
**Trattoria Oliverii**  
 1358 Shermer Rd.  
 Northbrook  
 847-559-8785  
[oliveriis.com](http://oliveriis.com)



**Tuesday, February 13**  
**Grill House**  
 3061 Dundee Rd.  
 Northbrook  
 847-205-2200  
[eatgrillhouse.com](http://eatgrillhouse.com)



**Monday, February 26**  
**Greek Feast**  
 2784 Dundee Rd.  
 Northbrook  
 847-559-1901  
[thegreekfeast.com](http://thegreekfeast.com)



## FAMILY RETREAT

**SAVE THE DATE**  
**MARCH 15–17, 2024**

At OSRUI Retreat Center in Oconomowoc, WI Everyone is welcome! Enjoy a relaxing, music-filled weekend with many fun activities. Such a special experience for families!



## CAMP & ISRAEL TRIP SCHOLARSHIPS

TBE scholarships are available for OSRUI and youth trips to Israel for children of our members. Contact Leslie Hanus (847) 205-9982 ext. 202 or [lhonus@templebeth-el.org](mailto:lhonus@templebeth-el.org)

**Application deadline**  
**is December 31, 2023**



# Contributions

Received October 18 – November 28, 2023

## TO MAKE A DONATION:

[www.templebeth-el.org/donate](http://www.templebeth-el.org/donate)

or see page 18

### A JUST HARVEST

#### For the *yahrzeit* of

Al Jacobs from Barb & Jeff Gordon

#### In loving memory of

Norma Mortge from Mae and Al Schwab

### CANTOR KAHAN'S DISCRETIONARY FUND

#### In appreciation of

Cantor Kahan from Tammy Mormino

#### In honor of

Kassidy's baby naming from Kim and Dev Houlihan

### FREE WILL

#### For the *yahrzeits* of

Yale & Bobbie Gerol

#### In honor of

Our Anniversary from Leslie & Stuart Dubin

### KAPLAN CAMP SCHOLARSHIP FUND

#### For the *yahrzeit* of

Edythe Dickman from Judy Darch

### MAGEN DAVID ADOM

#### In honor of

Magen David Adom from Douglas & Janice Berman  
The Helbrauns and all TBE members who traveled to the  
March for Israel rally in DC from George & Nancy Vizer  
Magen David Adom from Irwin Leiter  
Rabbi Helbraun's birthday from Jennifer Stein  
Magen David Adom from Jordan & Jill Gelb  
The Bat Mitzvah of Ember Yanes from Maureen  
& Howard Yanes

### MATTHEW SCHAFER-SCHWARTZ

### TIKKUN OLAM AWARD FUND

#### In loving memory of

Gilbert Levy from Herbert Cohen  
Gilbert Levy from Jerry & Evie Levin

### MEMORIAL FUND

#### For the *yahrzeit* of

William Leiter from Irwin Leiter

#### In loving memory of

Lillian Rose "Lil" Cohen from Barbara & Andy Effron  
Zitzie Morgan from David & Violet Lewis  
Gilbert Levy from Ellen Robin  
Gilbert Levy from George & Nancy Vizer  
Matthew Richmond from Howard & Barry Hurwitz  
Gilbert Levy from John and Erica Sinsheimer  
Matthew Richmond from Kenny & Muffin Spielman  
Matthew Richmond from Mark & Ellen Richmond  
Isadore Levine from Marlene Levine  
Dr. Matthew Richmond from Mauro & Thelma Gozum  
Gilbert Levy from Sally and Steve Lane

### PERPETUATION FUND

#### For the *yahrzeits* of

Ruth and Al Saber from Sally and Steve Lane

#### In appreciation of

Sandy & Jerry Lewis' lasting friendship from Irwin Leiter

#### In honor of

Jan Benish's 75th Happy Birthday from Leslie Dubin  
Julie Rifkin's Birthday from Leslie Dubin  
Liam's 2nd Birthday from Stuart and Leslie Dubin

### RABBI HELBRAUN'S DISCRETIONARY FUND

#### For the *yahrzeit* of

Rebecca Levy from Barb & Jeff Gordon  
Philip Gluskin from The Gluskin Family

#### For the *yahrzeits* of

Marilyn Spector from Barbara Berman

#### In appreciation of

Rabbi Helbraun's adult education classes from Benjamin  
& Alison Margolis  
Rabbi Helbraun's genuine kindness from Robert Franks

#### In honor of

Rabbi Helbraun from Audrey and Len Rubin  
Rabbi Helbraun from Ellyn and Alan Leib  
Achra Bacherem Congregation from Gerald  
& Sandra Lewis

#### In honor of the birth of

Miriam Zelda Bachrach from Barbara Berman  
and Fred Rosenberg

#### In loving memory of

Gilbert Levy from Hal & Cindy Wolken  
Lloyd Holtzman and Rita Holtzman from Janice  
and Steven Bradley  
Thelma Porter from Larry Porter  
Norman Abrams from Lynn and Rob Silverman  
Morris B. Ablin from Ronald & Sherry Stewart  
Barbara Moretti from Ronald & Sherry Stewart  
Sylvia Ablin Adelman from Ronald & Sherry Stewart  
Norma Mortge from Rosely Kaiser

### SISTERHOOD

#### In honor of

The TBE Sisterhood from David & Marcia Kanarek

#### In loving memory of

Paulette Kallow from Carole Laskey

### SOCIAL ACTION FUND

#### For the *speedy recovery* of

Alan Stone from Barbara Berman

#### In honor of

Laurie Orenstein from Craig and Debbie Marlowe  
The Social Action Committee from David & Marcia Kanarek



***In loving memory of***

Norma Mortge from Craig and Debbie Marlowe

Gilbert Levy from Irwin Leiter

**TEMPLE BETH-EL ENDOWMENT FUND**

***In honor of***

Laurie Orenstein from Fred Rosenberg

***In loving memory of***

Maurice "Maury" Rosenberg from Fred R. Rosenberg

**TEMPLE BETH-EL GENERAL FUND**

***In appreciation of***

Temple Beth-El from Alvin & Nancy Gorman

The Rosh Hashanah Aliyah from Charla & Arnold Silver

***In honor of***

Donna & Chuck Schwartz from Eric & Beth Schwartz

Everyone from Jolie & Alan Genender

The High Holidays from Roman & Anna Frid

Leslie & Stu Dubin's Anniversary from Steven & Julie Rifkin

***In loving memory of***

Gilbert Levy from Gayle and Rick Pervos

**TORAH FUND**

***For the yahrzeit of***

Gerald Plotkin from Vicki Bahnasy

**Yahrzeit Fund**

***For the yahrzeit of***

Ethel Paul from Arlene Caitung

Ralph Weiss from Bruce & Linda Gordon

Bob Brown from Douglas Schwartz & Cynthia Schaffer

Ruth Geiderman from Douglas Schwartz

& Cynthia Schaffer

Robert Hirschberg from Eileen and Chuck Kuenneth

Zena Yurkovsky Hochman from Joel & Janet Hochman

Ardis Sophian from Laurence Sophian

Leonard Sophian from Laurence Sophian

Irving Sophian from Laurence Sophian

Robert Feigenbaum from Linda & Larry Simon

Adam Herling from Lynn Herling

Ina Festenstein from Paul Festenstein

Keith Hershfield from Paula and Michael Haber

Sam Adess from Richard & Reesa Epstein

Charlotte Kaplan from Sanford L. Barr

Charles Charnis from Sanford and Randy Barr

Anne Groner from Suzanne Groner

Sanford Dvore from Ted & Phyllis Borkan

***For the yahrzeits of***

Etta Gold from Deb Kushner

Alvin Bloom and Reva Blumberg from Donna Blumberg

Gene Kahen from Gary & Robin Kahen

Shirley Silverman & Olga Tobey from

Georgian Goldenberg

Richard Diamond and Marion Diamond from

Howard & Robin Diamond

***In loving memory of***

Shirley Gebel from Cindy & Dan Wolf

My beloved husband Cary G. Blumberg from

Donna Blumberg

My grandfather Samuel Bloom from Donna Blumberg

Gilbert Levy from Gary & Judith Katz

Sol Copeland from Rai Ellen Copeland-Keefe

**YOUTH OF BETH-EL**

***For the yahrzeit of***

My father Lowell Robin from Patricia and Allen Robin





# Shabbat Yeladim

# Hanukkah Pajama Party

December, 2023



## Jimmy Thai

[www.jimmythaideerfield.com](http://www.jimmythaideerfield.com)

405 Lake Cook Rd  
Deerfield, IL 60015  
(224) 235-4650



## Mazelography

B'nei Mitzvah Photography

847.708.8219  
Sara@mazeltography.com  
[www.mazeltography.com](http://www.mazeltography.com)





# Good Things are Happening!



Mazel Tov to our very own Education and Engagement Coordinator Jessi Hersman who was selected to be part of the HUC-JIR Jewish Ideas Fellowship

Mazel Tov to Anna & Matthew Heger on the birth of Ethan Alexander Heger — October 8, 2023

Mazel Tov to Michelle & Stephen Serck on the engagement of their son Jacob to Sydney Cohen — October 13, 2023

Mazel Tov to Kimberley & Jerry Levy on the engagement of their daughter Cassidy to Nathan Moncrieff — October 15, 2023

Mazel Tov to Marilyn and Robert Pohn on the engagement of their son Jeremy Pohn to Veesser Aminpour — October 21, 2023

Mazel Tov to Lisa & Ron Lavin on the marriage of their daughter Jamie to Sam Elias — November 11, 2023

Mazel Tov to Odette and Mark Olson on the engagement of their daughter Amber to David Mirando — November 11, 2023

Mazel Tov to Wendi & Tom Burnstine on the marriage of their son Adam to Lindsey Van Winkle — November 16, 2023

## **B'nei Mitzvahs**

### **November**

Ember Yanes — November 4, 2023

Bennett Vulykh — November 4, 2023

Anna Kessler — November 18, 2023

Claire & Lauren Zilberstein — November 18, 2023

### **December**

Aidan Shakhman — December 2, 2023

Evan & Olivia Salasche — December 2, 2023

Josie Milch — December 16, 2023

## **February**

Abby Posner — February 10, 2024

Ethan Hogendorp — February 17, 2024

Fawn Belofsky — February 24, 2024

## **Milestone Anniversaries**

### **December**

Randy & Sandy Barr – 50 years

Mendy & Rabbi Stephen Hart – 45 years

Nancy & Jay Reil – 45 years

Susan & Joseph Booker – 35 years

Ellyn & Alan Leib – 35 years

Debbie & Robert Fink – 35 years

Heidi & Brad Sloan – 20 years

### **January**

Joy & Elliot Bruckman – 45 years

### **February**

Mae & Alvin Schwab – 60 years

Daya & Jon Levin – 10 years

## **New Members**

### **October 13–November 28, 2023**

Laura & Brian Golden

Karen & Michael Harlan

Marcy & Peter Knysz

Jeanette & Earl Saltzberg

Dana & Bryant Schneider

Shayna Shapiro & David Weichman

Nina & Alon Stein



Please contact Holly Hamburg to share your good news at (847) 205-9982, ext. 207 or [hhamburg@templebeth-el-org](mailto:hhamburg@templebeth-el-org).



## **CALLING ALL NEW TBE MEMBERS!**

Temple Beth-El welcomes all new members with a special Shabbat Welcome Basket. If you have not yet received your basket, please give us a call or send us an email to schedule a time for you to stop by the Temple during business hours so we can officially welcome you to the TBE Community with a new member basket!

Call Holly at (847) 205-9982, ext 207, or [hhamburg@templebeth-el.org](mailto:hhamburg@templebeth-el.org)

# facebook®

Join Our  
Community  
Connection  
Facebook Group.



## TEMPLE BETH-EL DONATION FORM

We appreciate all contributions and suggest a minimum donation of \$18 per acknowledgment.  
**Please make all checks payable to Temple Beth-El and mail to 3610 Dundee Rd. Northbrook, IL 60062**  
**Or go online to [www.templebeth-el.org/donate](http://www.templebeth-el.org/donate)**

Your Name(s) \_\_\_\_\_ Today's Date \_\_\_\_\_

Address \_\_\_\_\_

City \_\_\_\_\_ State \_\_\_\_\_ ZIP \_\_\_\_\_

Phone: \_\_\_\_\_

**Please confirm my donation via email. My email address is:** \_\_\_\_\_

- |   |   |   |
|---|---|---|
| <input type="checkbox"/> TBE General Fund                           | <input type="checkbox"/> Matthew Schaffer-Schwartz <sup>z"l</sup><br>Tikkun Olam Award Fund | <input type="checkbox"/> Social Action Fund   |
| <input type="checkbox"/> A Just Harvest                             |   | <input type="checkbox"/> TBE Endowment Fund   |
| <input type="checkbox"/> Blitz Family Children's Cultural Arts Fund | <input type="checkbox"/> Memorial Fund  | <input type="checkbox"/> TBE Men's Club   |
| <input type="checkbox"/> Cantor's Discretionary Fund                | <input type="checkbox"/> Steinberg Education Fund   | <input type="checkbox"/> TBE Sisterhood   |
| <input type="checkbox"/> Campaign for Religious Equality in Israel  | <input type="checkbox"/> Mishkan T'filah Prayer Book Plate<br>(\$36 minimum donation)       | <input type="checkbox"/> Torah Fund   |
| <input type="checkbox"/> Free Will                                  | <input type="checkbox"/> Perpetuation Fund  | <input type="checkbox"/> Tree of Life \$154/leaf<br><b>Leaf wording form will be sent</b> |
| <input type="checkbox"/> Kaplan Camp Scholarship Fund               | <input type="checkbox"/> Phyllis Natalie Podolsky <sup>z"l</sup> Library Fund               | <input type="checkbox"/> Yahrzeit Fund  |
| <input type="checkbox"/> Libby Golden <sup>z"l</sup> Memorial Fund  | <input type="checkbox"/> Rabbi Helbraun's Discretionary Fund                                | <input type="checkbox"/> YoBE – Youth of Beth-El  |
|   | <input type="checkbox"/> School Tzedakah  |   |

**Please check one:** ☐ In loving memory ☐ Speedy recovery ☐ In honor of ☐ (other) \_\_\_\_\_

Name(s) \_\_\_\_\_

Send Acknowledgment Card to: Name(s) \_\_\_\_\_

Address \_\_\_\_\_ City \_\_\_\_\_ State \_\_\_\_\_ ZIP \_\_\_\_\_

Email \_\_\_\_\_

Credit Card: ☐ Amex ☐ Discover ☐ MasterCard ☐ Visa Credit Card No. \_\_\_\_\_

Exp. Date Security Code Charge Amount \$\_- or - Check Amount (Enclosed) \$\_

**Please consider adding 3% to your donation paid by credit card to cover our processing fees.**



Security Officer Jason Broadway watching out for our students



Vigil for Israel at North Suburban Synagogue Beth El



# Chicago Jewish Funerals

is the proud provider of the  
Temple Beth-El Funeral Plan

David I. Jacobson  
Founder

Jeremy Seaver  
Funeral Director

William J. Rubin  
Funeral Director



Simcha Frank  
Funeral Director

Susan Winkelstein  
Funeral Director

Yehuda Polstein  
Funeral Director

## CARING FOR A QUARTER OF A CENTURY.

Chicago Jewish Funerals has been privileged to serve our community for 25 years.  
We continue to be humbled by those whom we have been called upon to serve  
and to the leaders and organizations with whom we are honored to share this vision.

Providing Notary Public Services Since 1965



Contact Fred R. Rosenberg  
fredfox18@comcast.net  
312-532-2457

No Fees To Temple Beth-El Congregants  
(Donations to TBE Education Fund Appreciated)



# Mitzvah Photography

## Annette Leibovitz

www.MitzvahPhotography.com  
mitzvahphoto@aol.com

847-913-5588 *Stress Free Photography!*



instagram.com/AnnetteLeibovitz



facebook.com/MitzvahPhotographyAnnetteLeibovitz



## Michael Rubenstein

*Family Service Counselor*

Shalom Memorial Park  
Shalom Memorial Funerals  
(847) 668-2724  
mRubenstein@Shalom2.com

Helping our community plan their  
Cemetery and Funeral Arrangements  
*Proud to be a Beth-El Congregant for 19 years*



## Ron Bernardi

Servant  
Community Service Representative

1127 Church Street • Northbrook, Illinois 60062  
Tel: (847) 272-7700 • rbernardi@sunsetfoods.com



## *Proud to offer a Temple Beth-El Funeral Plan*

Having funeral services in the Shalom Memorial Chapel  
means more time to spend with loved ones  
and less time traveling in procession



*Shalom Memorial Funeral Home*  
*Shalom Memorial Park*

1700 West Rand Road, Arlington Heights, IL 60004  
(847) 255-3520 - [www.Shalom2.com](http://www.Shalom2.com)



# FIND YOUR HAPPY PLACE



**CRUISE PLANNERS**  
COMPLETELY PERSONALIZED VACATIONS

★★★  
**VETERAN**  
OWNED BUSINESS

## JOSHUA & STEPHANIE BRAND

Your Luxury Land & Cruise Experts!

**(847) 786-2470 - Full Service Luxury Travel Agency**

[www.jbscruiseandtravel.com](http://www.jbscruiseandtravel.com) | [joshua.brand@cruiseplanners.com](mailto:joshua.brand@cruiseplanners.com)

 JBSCruisePlanners  JBSCruisePlanners

FLST# 39068, CST# 2034468-50, HST# TAR-7058, WAST# 603-399-504



# Making Long Term Care Insurance Easy Since 1975!

## Why Choose Gordon Associates?

### EXPERTISE

We are experts in Hybrid/Asset Based and Stand-Alone LTCI, providing comprehensive risk management solutions.

### PERSONALIZED SERVICE

Personalized service from the first call through claim time.

### EDUCATION

Offering education, policy reviews, administrative support and claim assistance.



**5 STAR RATED**

*by advisors and clients*

“There are only four kinds of people in the world — those that have been caregivers, those that are caregivers, those who will be caregivers, and those who will need caregivers.”

- Rosalynn Carter



“Gordon Associates is my go-to recommendation for all my readers who ask about Long Term Care Insurance. And I put my money where my mouth is - I purchased my own LTC policies from them, too!”

- Terry Savage  
Personal Financial Expert

*The Gordon family has been a longtime member of TBE.*



**Gordon**  
ASSOCIATES  
Long Term Care Planning Experts



FINANCIAL  
PLANNING  
ASSOCIATION  
ILLINOIS

**PROUD TO SUPPORT**



Contact Brian or Murray Gordon for more information at:

**800.533.6242 | GALTCL.com**

**LICENSED NATIONALLY**

In California DBA GALTCL INSURANCE SERVICES - CA License# 0E81056



*Our clergy and staff  
are here for you!*

## CONTACT US

(847) 205-9982

[www.templebeth-el.org](http://www.templebeth-el.org)

3610 Dundee Road, Northbrook, IL 60062



**Rabbi Sidney Helbraun**

Senior Rabbi

[RabbiHelbraun@templebeth-el.org](mailto:RabbiHelbraun@templebeth-el.org)

(847) 205-9982 ext. 204



**Laurie Orenstein**

Executive Director

[LOrenstein@templebeth-el.org](mailto:LOrenstein@templebeth-el.org)

(847) 205-9982 ext. 211



**Elian Yarden-Oppenheim**

Accounting Manager

[Elian@templebeth-el.org](mailto:Elian@templebeth-el.org)

(847) 205-9982 ext. 209



**Cantor Adam Kahan**

Cantor

[CantorKahan@templebeth-el.org](mailto:CantorKahan@templebeth-el.org)

(847) 205-9982 ext. 206



**Leslie Hanus**

Clergy and Lifecycle Coordinator

[LHanus@TempleBeth-El.org](mailto:LHanus@TempleBeth-El.org)

(847) 205-9982 ext. 202



**David Shuman**

Facility Manager

[DShuman@templebeth-el.org](mailto:DShuman@templebeth-el.org)

(847) 205-9982 ext. 221



**Laura Perpinyal, RJE**

Director of Congregational

Learning

[Lperpinyal@templebeth-el.org](mailto:Lperpinyal@templebeth-el.org)

(847) 205-9982

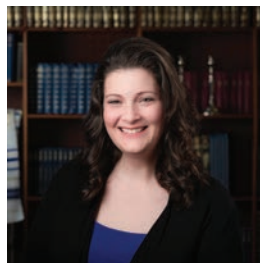


**Holly Hamburg**

Membership Coordinator

[HHamburg@TempleBeth-El.org](mailto:HHamburg@TempleBeth-El.org)

(847) 205-9982 ext. 207



**Jessi Hersman**

Education and

Engagement Coordinator

[Jhersman@templebeth-el.org](mailto:Jhersman@templebeth-el.org)

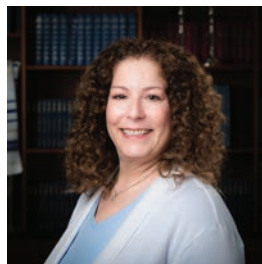
(847) 205-9982 ext. 205



**Rabbi Victor H. Weissberg**

Rabbi Emeritus

(847) 205-9982 ext. 202



**Linda Goldman**

Communications and

Event Coordinator

[LGoldman@TempleBeth-El.org](mailto:LGoldman@TempleBeth-El.org)

(847) 205-9982 ext. 208



**Lisa Michael**

Operation and Education

Coordinator

[LMichael@templebeth-el.org](mailto:LMichael@templebeth-el.org)

(847) 205-9982 ext. 210

## TBE Board of Directors

Amy Huck  
President

Ken Traub  
Executive Vice-President

Kelly Kaufman,  
Membership Vice-President

Howard Korenthal  
Financial Vice- President

Sandy Ridker  
Education Vice-President

Barbara Rosenberg  
Program and Activities  
Vice-President

Alan Stone  
Facilities Vice-President

Don Solomon  
Immediate Past President

Lani Hart  
Recording Secretary

## Members-At-Large

William Boushie

Andrea Brown

David Cohen

Jolie Genender

Ronald Jacobson

Jack Kamm, Men's Club

Gerald Lewis

Benjamin Margolis

Fred Rosenberg

Leslie Schlesinger, Sisterhood



*Vibrant Judaism  
— Welcome Home*

NON PROFIT ORG.  
US POSTAGE  
PAID  
SKOKIE, IL  
PERMIT NO. 269

3610 DUNDEE ROAD, NORTHBROOK, IL 60062

(847) 205-9982 | [templebeth-el.org](http://templebeth-el.org)



Temple Beth-El is an inclusive Jewish community open to people of all ages, races and abilities, welcoming interfaith families, people who are single, partnered and LGBTQIA+.

The Temple Beth-El Bulletin is published bi-monthly. Letters, comments and news about the Temple are always welcome. Please send via email to [office@templebeth-el.org](mailto:office@templebeth-el.org). Bulletins may also be viewed on our website.

50/50 RAFFLE

FEBRUARY  
88  
DOWN  
88

DINNER  
6:00  
AM • PM  
BINGO  
88:00  
AM • PM

YEAR  
24  
BALL ON  
88

GREAT PRIZES

WEAR YOUR  
FAVORITE  
FOOTBALL  
JERSEY

16  
TEMPLE  
BETH-EL

בית  
אל  
TEMPLE  
BETH-EL

Super  
SWEET XVI  
BINGO NIGHT  
SATURDAY, FEBRUARY 10  
DINNER: 6:00PM  
BINGO: 7:00PM  
COST: \$36 IN ADVANCE  
\$45 AT DOOR  
LUCKY TABLES: \$20 FOR UP TO 8 PEOPLE  
BINGO CARD PRESALE: \$25  
(INCLUDES MINIMUM FOR EACH GAME)  
KIDS UNDERNIGHTER

16  
TEMPLE  
BETH-EL

Scan to register