

Welcome Home.

TEMPLE EMANUEL BULLETIN

January-February 2021 | Shevat-Adar 5781 | Volume 87, No. 3

Dear Friends,

Rabbi Abraham Isaac Kook, the first chief rabbi of the state of Israel, famously taught that there are many levels of song. "There is one who sings the song of one's own life," he wrote, "and in herself she finds everything, full spiritual satisfaction." I imagine that for many of us, these past ten months of the pandemic have felt just this way – by necessity rather than design. Through limited social interaction and certainly without regular community singing, we have had to sing our own songs – sometimes in our minds, sometimes quietly, sometimes proudly out-loud. And while singing alone can be beautiful and freeing, our solo voice in the quiet can also resound with loneliness. As our congregation has experienced time and time again, quite often the power of song and singing comes from singing together. As a clergy team, we acutely miss singing with all of you. We feel and appreciate the meaningful connections that we have created in our holy virtual spaces, and yet we miss the sound of your singing. We are sustained by the many memories of the musical energy of our congregation – by the remembered sound of our sanctuary full and proud and loud with song.

This year, Shabbat Shira, the Shabbat of Song – the Shabbat on which we read and celebrate the Israelites singing as they cross through the Sea of Reeds from slavery to freedom – coincides with our usual weekend for Temple Emanuel's annual fundraiser. Each year, during our fundraiser, we also celebrate with song – the power of music, the joy of our community, and the promise of our congregation as we rise to the challenges of the future. These two events – Shabbat Shira and our Annual Congregational Celebration – are often quite close to one another, but only occasionally coincide exactly. It is bittersweet that this connection occurs precisely at this moment in time. On the very day that our Torah tells us that all of the Israelites spontaneously sang together as

an expression of joy, relief, hope, and thanks – a song inspired by the Holy Spirit itself – we will not yet be able to blend all of our voices in a glorious expression of depth, diversity, and connection.

And yet, we know that while we are physically apart, the light, the strength, and the music of our community have remained resilient throughout these many months because of the commitment from all of you to maintain and nourish our essential connections to one another. Rav Kook's treatise on song continues beyond the "song of one's own life." He lifts up those who sing "the song their people," "the song of humanity," and "the song of the world." And then there are those, Rav Kook writes, "who rise with all these songs in one ensemble...each song lending vitality and life to the other...the song of the self, the song of the people, the song of humanity, the song of the world all merge in them at all times, in every hour. And this full comprehensiveness rises to become the song of holiness."

In this time of difficulty, together, we will confirm our connection to one another as we continue to sing the song of our people. Together, we will affirm our commitment to justice as we continue to sing the song of humanity. Together, we will uphold our compassion for all of creation as we continue to sing the song of world. Because together, we rise.

Senior Cantor Elizabeth Sacks



INSIDE

Together We Rise, 2
Inside Temple, 3-5

Kaddish List, 6-7
Tributes, 8-9

Passing Members, 10
Virtual Worship, 12



TEMPLE EMANUEL

Individuals are inspired to fulfill their Jewish identity and participate actively in our dynamic Reform Jewish religious community.

Join our email list and receive information and updates about our programs.
Email stark@emanueldenver.org to be added to the list.

OFFICERS

President Danny Foster
Vice President Wendy Nekritz
Secretary Kelli Pfaff
Sisterhood President Barbara Schwartz
Brotherhood President Will Trachman
Friedman Club President Jeira Esserman

BOARD

Rich Cohn • Ron Colson • Lee Erickson
Ken Fellman • Eloise Hirsch • Amy Gart Pell
Lori Kalata • Larry Katzin • Toni Kboudi
Larry Kaplan • Charles Malek • Ron Sachs
Farah Stern • Donald Yale

CLERGY

Senior Rabbi Joseph R. Black
Senior Cantor Elizabeth Sacks
Associate Rabbi Emily Hyatt
Cantorial Soloist Steve Brodsky
Rabbi Emeritus Steven E. Foster
Cantor Emerita Regina Y. Heit

STAFF

Executive Director Steven M. Stark
Director of Youth and
Family Learning Brad Cohen
Early Childhood Director Susan Wartchow
Shwayder Camp Director Jodie Abrams Schafer
Development Director Francie Miran
Director of Adult
Engagement Sarah Brown
Executive Director Emerita Janet Bronitsky

FOR MORE INFORMATION

Phone: 303.388.4013
Fax: 303.388.6328
www.emanueldenver.org
shalom@emanueldenver.org

To email staff:
"lastname"@emanueldenver.org

Rabbi Steven Foster Early Learning Center
303.321.7258

SAVE THE DATE

Together We Rise Celebration Weekend



There has never been a year where we have needed to ask for as much support from our congregation as we have this year. You have responded so generously to our Together We Rise fundraising campaign for Temple. We want to thank you and celebrate your amazing support.

Every January we gather together for our annual fundraising concert and to celebrate Shabbat Shira. Although we won't be able to gather as we usually do, we will still be celebrating our congregation and enjoying beautiful music with a weekend of special programming.

Friday, January 29, 6:00 p.m. | Shabbat Shira (Shabbat of Song)

Shabbat Shira will be a time to worship with special music that recognizes the challenges of this year and helps us honor our congregation. We will join together in song at our regularly scheduled Friday night service.

Saturday, January 30, 11:00 a.m. | Shabbat Shira Morning Service

Join us for worship celebrating song with the entire clergy team.

Saturday, January 30, 7:00 p.m. | Together We Rise Virtual Celebration

This virtual event will be an opportunity to thank the congregation for their support during this past year. There will be special musical pieces by our clergy as well as some video surprises from musicians who wanted to join in celebrating our congregation. It will be streamed on our website and on Facebook.

More information will be coming in the next couple of weeks, but mark your calendar now for these events. You won't want to miss them.

THE BUSINESS OF TEMPLE EMANUEL MARCHES ON!

Hello Dear Friends. By the time you read this we will have successfully completed our virtual Hannukah Hoopla celebration, ushered in 2021 (and we know it will be better than 2020!) and millions of Americans will have received the COVID-19 vaccine. Things are looking up for our community and our world, and the business of Temple Emanuel marches on. I am grateful to the amazing Temple clergy and the entire Temple staff for their incredibly hard work keeping us connected as a holy community despite the lack of in-person events. Temple continues to offer a variety of religious programming, services, and study sessions, so please take advantage! We encourage you to check out the clergy learning series which will kick off in 2021 as well as a fabulous night of Jewish music for Temple Emanuel's annual event on Saturday, January 30th. It is free for all of you to "attend" and any contributions you can make to help maintain Temple will be very much appreciated. Just visit Temple's website to make a donation and stay tuned for more information. As we roll into 2021 the Temple Emanuel Re-opening Task Force continues to discuss the timing to slowly re-open our facilities and get back to the face-to-face that we all so dearly miss. Again, we can't promise a date, but we are doing all we can to ensure a safe, efficient and responsible re-opening. On behalf of the Temple Emanuel Board of Trustees I want to wish you all a very happy and healthy 2021!

Danny Foster



INSIDE TEMPLE

Upcoming events and changes

We're excited to share that 2021 will bring a brand new Clergy Learning Series! Join us over the coming months to learn and engage meaningfully with topics covering a broad range of our human experience. Each segment will be led by one of our clergy team, focusing on one topic area over the course of three to five weeks on Zoom. Stay tuned for more detailed information!



Meaning in Mortality

Rabbi Black

Wednesdays from Noon-1 p.m.
Jan 13, 20, 27, Feb 3, 10

Epic Moments

Steve Brodsky

Wednesday from 7:00 – 8:00 p.m.
Feb 17, 24, March: 3, 10

Facing the Big Questions: Social Justice, Education, Intermarriage

Rabbi Foster

Tuesdays from 10:00 – 11:00 a.m.
March: 16, 23, 30

Oh, For the Love of God

Rabbi Hyatt

Thursdays from Noon – 1:00 p.m.
April 8, 15, 22, 29

The Gospel Truth

Cantor Sacks

Thursdays from 7:00 – 8:00 p.m.
May 6, 13, 20, 27

EmanuElders

Rabbi Black

Wednesdays from Noon – 1:00 p.m.
June 2, 9, 16, 23, 30

INSIDE TEMPLE

Small Interest Groups

We have been busy cultivating intentional cohorts to meet regularly over shared interests and life stages. Many have already met with great success and are on their way to forming meaningful connections in what often feels like a disconnected time.

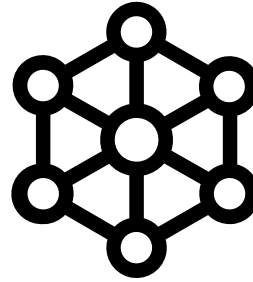


These groups are congregant-led (with help from staff as needed) – let us know if you would like to take the lead! We are still looking for a few individuals

who would be interested in facilitating these groups. To express interest in facilitating, learn more about facilitator responsibilities, or inquire about joining an existing group, connect with Sarah Brown at brown@emanueldenver.org.

- › **Between the Lines: Parent/Teen Book Club.**
Recommended for ages 13 and up.
- › **Flick Friends:** Movie Club.
- › **Nearly Weds and Newly Weds:**
Young couples in the Temple community.
- › **Solo and Seeking Connection:**
Members living alone and looking to connect.
- › **Women's Group:**
Women friends between ages of 40-60.
- › **Single Parents with Kids 6 and Under:**
Single parent group for support, advice, and camaraderie.

OM Your Power During Pandemic and Beyond



3 Sessions: Feb 2, 9, 16 | 7:00pm-8:00 p.m.

Register at <http://bit.ly/OMYourPower>

Through the intensity and the stress of a global pandemic, this three-part series is for everyone who needs support, deep nurturing, spaciousness, relief, and integration.

OM Your Power is Ariela HaLevi's signature class blended with Kabbalistic themes and realistic techniques, tools, and guidance for releasing stress and overwhelm and transforming it into efficiency and spaciousness. If you feel isolated, stressed, heaviness, the weight of responsibility, overwhelm and fear, then let OM Your Power help connect you to discover the inner wisdom tools you never knew you had at your fingertips.

In this three-part series you will:

- Learn to nurture your soul so you can support your family, friends and loved ones
- Discover the pathway to your higher self even during times of stress and anxiety
- Best practices for emotional strength during pandemic and beyond
- Explore Kabbalistic themes to discover sparks of light in the unknown
- Discover pathways to engage in your body and awaken your spirit
- Learn Ariela's most trusted tools to transform your life consciously and effectively, even in pandemic, to meaningful, purposeful and inspirational.

This is a heightened time of bringing forth all our healing tools.



Thank to you the leadership and staff of the Foster Early Learning Center!

Since the end of June when The Steven Foster Early Learning Center reopened, the staff — led by Director Susan Wartchow — has done an exemplary job creating a safe, nurturing place during the time of this pandemic. The Ezra leadership team along with the teachers have crafted policies, procedures and protocols to enable our youngest students to thrive. The classrooms have each created a *Brit* (agreement) among families and teachers to empower our students to continue to grow and explore safely. The Steven Foster Early Learning Center has continued to be a national model of how to work in collaboration with families to provide the best care possible. We are so proud of our ELC!

INSIDE TEMPLE

Tech Operation Notes

1 We are so excited to announce that in 2021, we will begin the transition to **ShulCloud, our new cloud-based accounting, scheduling, and member portal.** We are evolving all of our systems and you can look forward to more streamlined operations. We can't wait to roll this out to the community, and ask for your participation and patience as we move our systems over from our current setup. At this time, no action is required, but please stay tuned as we learn more about how and when ShulCloud will be utilized.

2 Thank you for your flexibility over the past months in relying on our website and social media platforms to connect. We encourage you to **continue checking the website and social media for upcoming events** as we will rely less on mailed communications to update you.

3 You can now find the **Kaddish list on our website!** Check under the Worship tab on our homepage and click the Yahrtzeit link to be taken to this and next month's Kaddish lists.

What is ShulCloud?

ShulCloud is a cloud-based synagogue management solution that assists with accounting, member registration, donation tracking, website management, and more.

welcome
New Members

Josh & Erin Malman, Delilah & Keller
Josiah & Jennifer Hoffman, Jacob & Asher
Bettina Kurowski

GROUP SPIRITUAL CHECK-IN

Weekly Clergy Hour

Thursdays from 12:00 -12:45 p.m. beginning January 7th

Having a hard week? Or month? Looking for some light to lift your spirits and bring you a sense of connection? Although our building is closed, the Temple Emanuel clergy team is here for you. Beginning on Thursday, January 7th, we will have a weekly group Spiritual Check-In session with a rotating member of the clergy team. Register weekly (link coming soon) by Wednesday at 5:00 p.m.; Zoom link shared between 9:00 a.m. and 10:00 a.m. on Thursday morning. These sessions will be private to the Zoom group; they will not be streamed. Come once or always – our virtual door is open.

For more immediate pastoral response, email care@emanueldenver.org or call 720-762-6897. utilized.

KADDISH LIST

The names listed below are taken from the memorial plaques in the Meditation Room. Names are read at the Friday evening and Saturday morning Shabbat services following the date of death. To find out how to purchase a plaque, contact Patricia Lackner, ext. 308. To have other names read on a Friday evening, call the Temple by Friday noon.

January 1

Richard D. Battock
Bernice Bassow
Mandel Berenbaum
Bertha Berkowitz
Carl Lee Bomash
Irving Clar
Albert H. Cook
Anna Cramer
Jennie Diamond
Ralph Fisher
Henry Frankle
Irwin "Fry" Freiburger
Mary Fried
Esther Friedman
Hyman Friedman
Ethel Frosh
Hazel Gardenswartz
Sam Gardenswartz
Cynthia H. Goralnik,
M.D.
Edward J. Gordon
Esther Yudas Gordon
Fannie Hurst
Albert Kane
Harry Kawin
Louis B. Kentor
Silas M. Kobey
Branche S. Kohn
Ruth Jeanette Kornfield
JoAnn Krimmer
Morris J. Krohn
Anna Lackner
Seymour Levy
Leonard Lewis, M.D.
Michael J. Lipan
Harold Loveman
Charles Marcus
Rosetta L. Marx
Susan R. Mason, M.D.
Leonard Mendelson
Max Meyer
Matthew Millenson
Rose Mintz
Florence Mishell
Gerturde "Sis" Moses
Jacob Newhouse
Dorothy Oliner
Harris Ornauer
Charles Rich
Morris Ripley
Lewis J. Robinson
Nettie P. Sandman
Ann N. Schiffer
Rose Schiffer
Max M. Seff
Isaac Shwayder
Sarah Simpson
Z. Ben Snyder

Hattie N. Solomon
Sayde Gradstone Stark
Martin Trotsky
Fannie Weinberger
Johnny Weinreich
Samuel Weissberg
Irene Ziner
Doris C. Zohn

January 8

Essie Anfenger
Adolph S. Axelrod
Rubie S. Baum
Fanny G. Bauman
Paul Lazarus Block
Shirley Bloom
Marcus N. Bressler
Susie Cohan
H. Stanley Cook
Charlotte Altberger
Diamond
Harvey A. Eisen
Benjamin Elenbogen
Sadie Epstein
Donald L. Felsen
Carrie S. Friedman
Jerry Friedman
Fay Glick
Leo Goldblatt
Ruth Golden
Edna Jarecki
Max L. Kahn
Anna S. Katz
Donald Kaufmann
Dorothy Joseph Koin
Allen Joe Kramish
Roslyn C. Krim
Sandra A. Lackner
Evelyn Kaufman
Learner
Earl Leiser
Anna Levy
Leonard A. Lewis, M.D.
Ruth Mandell
Fanny Menkofsky
Joshua D. Nathan
Elias Pelton
Gertrude Pinkas
Ira Louis Quiat
Bessie Teresa Rodman
Dorothy Rollnick
Adrian Rosefelder
Sophie Rosenthal
Ann Samelson
Jenny W. Schaefer
Rose Schatz
Charles Milton Schayer
Dudley C. Schoenberg
Ida Shraiberg Schwab

Louis E. Schwartz
Sara Segel
Lawrence "Larry" C.
Sloane
Lena Snyder
Milton G. Solomon
Jacob L. Stern
Ben L. Stone
Herman H. Stone
Samuel Strouse
Loretta Plotkin Tarkoff
Julius Wallbrunn
Augusta F. Weinberg
Faye Weinberg

January 15

Jeanne Elbe Balkin
Sam Baum
William Bensey
Casriel Berger
Rickley Berman
Max Bronstine
Irving Cohen
Morris Cohn
Florence M. Crown
Bernice Flax
Dorothy "Duddy" Fox
Zelda Lasky Fried
Rose F. Galen
Bernard Goldstein
Nathan Goldstein
Maurice M. Greenfield
Florence Hene
Ida Hoffman
Steven Evan Karsh
Gertrude Evelyn Katz
Rae Katz
Lawrence K. Kirsch
Anna Klingstein
Jacqueline S. Landers
Samuel Lehmann
Rae I. Levy
Regina W. Levy
Jennie Lewin
Reeva Aarons Marcus
Esther M. Mosko
Ina Cohen Mason
Sam Mayer
Samuel B. Miller, Jr.
Sadie Milstein
Arthur Nitzberg
Doris Nitzberg
Frieda Padzensky
Marvin K. Pepper
Sally Lutz Pepper
Robert Peyser
Ann Reinstein
George C. Reuler
Leon M. Rottman

Elizabeth Schultz
Charles Schwartz
Meyer "Tim" Shaner
Alan L. "Skip" Sigman
Berta Singer
Fan R. Susman
Stanley Springer
Anna Stein
Morris Strear
Gerald Tatarsky
Jacob J. Tepper
Henrietta G. Tishler
Charlotte Eisen Tucker
Marion Cohen
Yarchever

January 22

Rae Adelman
Corinne Asher
Ida Balazs
Harry Berkowitz
Phil M. Blacher
Carolyn Shraiberg
Bascom
Sarah Cain
Jack Cohan
Ruth L. Cohen
Shirley Ann Cohen
Doris Fischer
Simon Frank
Norman Zander Fried
Joseph D. Friedland
Juliet Freyhan Friedman
Ada G. Friedman
William N. Frost
Sylvan G. Glick
Gary Lee Goldberg
Gerrude Goldberg
Jennie Goodman
M. Ray Gottesfeld
Leslie A. Gross
Sophia W. Groussman
Minnie Shibko Harris
Bernard Hyman
Minnie W. Israelske
Leah Sheftel Kobey
Leonard Kurtz
Marko Leibovitch
Anna P. Lichtenstein
Celia Meyer
Sam Mishell
Bella Mintz
Mary C. Morris
Walter W. Morris
Leo S. Moses
Robert S. Oberfelder
Fanny Payne
Mark A. Rolfe III
Jacob P. Rosenbaum

Joel Rosenblum
Sam Ross
Gertrude Rushin
Joseph Salzman
Abraham W. Seff
Richard Michael
Shwayder
Isadore D. Siegel
Irwin Harold Simon
Gussie Gerson Sondock
Herman Spreyer
Peter J. Stratta
Boris H. Tytell
Yetta A. Kramish Wax
Eugene J. Weisberg
Anne Wigod

January 29

Ruth Abramson
Sara Amter
Fred C. Anfenger
Eli Atlivaick
Geza Balazs
Herman Band
Joseph M. Brenman
Ida Burke
Harry O. Cohn
Edna E. Conner
Ray S. David
Paula J. Erdman
Irving Fogel
Gertrude Frank
Zelda Frankel
Sally Fried
Norman A. Ginley
Roberta S. Ginley
Sarah Goldblatt
Arnold "Bud" Goldberg
A.J. (Jack) Harris
Sophie Isaacson
Morris E. Katz
Philip Benjamin Kobey
Albert Kramish
Rose Landers
Normand Langfelder
Elkan Lehrburger
Tillie LeNoble
Pauline F. Levy
Philip Lewin
Earl M. Light
Lyn W. Littman
Helene D. Malek
Betty M. Miller
Ernest Morris
Charles A. Newman
Arthur Oberfelder
Dora Pepper
Phil Perlmutter
Albert Rich

KADDISH LIST

Maria Rozycki
Sarrell M. Saffer
Joseph E. Samuels
Clinton Z. Schwartz
Seymour Sheldon
Grace Rose Sherman
Sophia Strear
Alice F. Stuhlberg
Nat C. Trifon
Frances L. Weil
David Weinberg
Brandon Alexander
Weinberger

February 5

Joe Alpert
Charles A. Atler
Sadie L. Baer
Emile Bassel
Harry Belstock
John Berenbeim
Steven Michael Berg
Effie M. Berger
Maxine G. Berman
J. Louis Caldwell
Revella W. Chapman
Richard G. Cohan
Maurice L. Cohn, M.D.
Morris H. Eber
Louis M. Ehrlich
Morton Lewis Gardner
Leland "Lee" Ginsburg
Sam Goldben
May Margaret Golin
Morton M. Goodstein
Ben E. Gordon
Rae Grannick
Gwen Gardner
Greenberg
Amy Friedman Goldman
Simon Joseph Heller
Miriam Hellerstein
Zelda Henkin
Florence Borwick
Herman
Ida Hurwitz
Geraldine E. Isaacson
David Jacobs
Harry I. Jacobs
Pauline Kallman
Isaac L. Kamlet
Albert S. Karsh
Elsie Kaufman
Jack S. Lederman
Esther Leibovitch
Dr. Belden W. Lerner
Gertrude Pellish Levy
Charles R. Meyer
Annie Miller
Joseph A. Milstein
Milton Morris
Louise M. Pepper

Ernest F. Rambar
Rebecca Rich
Bernard Rosensweig
Raleigh B. Samelson
Jane Schayer
Jerry Schoenwald
Edgar C. Seeman, Jr.
Dr. Frank C. Silverberg
Benjamin L. Solomon
Max Sunshine
Herman Strauss
Henry Tescher
Morris Tishler
Dorothy Davidson
Weinstein
Aaron Zaterman

February 12

Helen Kohn Amter
Joan Berenbeim Axelrod
Anna Hubscher Beck
Thelma Benowitz
Arthur Jay Beitscher
Benjamin Borwick
Johanna Boss
Nicholas Boss
Dorothy F. Cohen
Ethel N. Goldberg
Morris Goldberg
Ida Ruth Goldhammer
Dr. Gary N. Goralnik
E. Stuart Groussman
Frieda Hacker
Harry Hoffman
Samuel H. Iskow
Edith Steinberg Kay
David Komisarow
Dan J. Kornfeld
Bobby Levine
Esther Ann Morris
Dr. Kenneth Morris
Eleanor Grace
Perlmutter
Albert Rose
Edna Schoen
Joseph H. Silversmith
Karen Jean Slade
Arthur J. Snyder
Albert Susman
Rachel Dorothy Tanur
Simon Wachtel
Morey Wagner
Louis M. Weiner
J. Burt Weiner
Rose Troy Weinshienk
Della Weiss
Ann Wenner
Lillie B. Wolfe

February 19

Rochelle Lois Aaron
Frieda Appel

Yetta Balaban
Sol H. Bassow
Michael J. Baum, Jr.
Margarete Brook
Herman S. Brown
Harold J. Cohen
Sol Felsen
Albert J. Finer
Leo Flax
Irvin Fleisher
Carrie H. Freedheim
Alberta "Babe" Friedland
J. Freyhan Friedman
Rose G. Goldblatt
Morris Goldhammer
Dr. Theodore Grannick
Leon Grauman
Alex B. Gross
Minnie G. Heitler
Philip Hornbein
Sterling Kahn
Adolf Kaufman
Arlene Kleinman
Herbert Landsman
Sarah Lashowitz
Edward L. Lazar
Florence G. Lewin
Julia L. Lewin
Sarah C. Lohman
Earl J. Meer
Edward Mellicker
Sam Menkofsky
Forrest G. Meyer
Meredith "Muffy" Moch
Sylvan Moses
Max Oliner
Sigmund Porges
Raymond Rascover
Pearl Rifkin
Anna S. Rosenthal
Max L. Rosenthal
Abraham Rothstein
Edward Stral Rusman
Rae Sachs
Bertha Saenger
Max Saenger
Nata Jean Schachet-
Zeppelin
Morris Schayer
Jesse M. Schott
May Arno Schwatt
Ida Greenberg Seff
Edgar G. Seeman
Don Martin Shapiro
Barnet Shariberg
Evalyn Shere
Sallie Kay Markovitz
Siegel
Stephen Sigman
Ann Farber Simon
Abraham Sisack
Harry Sisack

Katie Smernoff
Alexander Stark
Bertye Stone
S. Charles "Toby" Tobias
Beatrice G. Tober
Sylvia L. Wagner
Lillian E. Wedgle
Ruth Wegener
Helene Wincor
Annie Winkler

February 26

Morris I. Alpert
Eugenia Bereysofsky
Jerome Berkowitz
Dana Cheryl Beitscher
Hattie D. Borwick
Esther A. Castle
Rose H. Cohan
Albert Cohen
Dorothy H. Cohn
Benjamin Scott Cook
Ben F. Englander
Bertha Eppstein
Irvin A. Erdman
Rose Watman Freedman
Myer J. Friedman
Mollie Gass
Bessie Goldstein
Philip B. Gray
Aaron Greenberg
David Grimes
Jean Ann Grubbs
Max Isaacson
Sara Katz Harris
Edith S. Hillman
Dorcher Hyman
Mathilde Jacobs
Harris Kobey
James D. Lackner
Solomon Lehrburger
Gertrude Levy
Irwin H. Levy
Jack H. Lopata
Meta Mayer
Harry Morris
May B. Mushkin
Harry Neusteter
Chaya Judith Nimsovit
Noy
Eleanor Pepper
Joan Rittenbaum
Arthur Samelson
Naomi Sheftel
Nancy Simmons
Kathryn Stone
Lewis R. Reis
Max Rifkin
Edith Rosenbaum
Arthur Tepper
Norbert S. Weiss
Esther S. Winter

March 5

Fred Bauer
Alan S. Beinhorn
Belle L. Beinhorn
Agnes Berenbaum
Ray S. Berry
Leopold Brin
Sam Coleman
Alfred Eddy Custer
Louis Dinner
Stanley I. Dock
Olga G. Dryfoos
Bernard "Bert" Erdman
Stacy Malman Feldman
Gladys L. Fishman-
Tennyson
Cindy Fowler
Mary Gass
Mary K. Gass
Meyer Goldblatt
Stephen S. Golden
Herman Goldsmith
Cindy Beth Grimes
Gilbert Hirsh
Amanda Kahn
Norman Karden
Sy Z. Karsh
Reta Bronstine Kawin
Zoe Tova Kislowitz
David H. Krohn
Alan D. Laff
Goldine E. Lackner
William S. Landers
Elaine S. Levin
Jay Robert Levy
Lesser Levy
Jules Milstein
Max Padzensky
Samuel Pells
Leora Perrish
Norton Polivnick
Bessie G. Radetsky
Sarah Rechnitz
Evelyn Rifkin
Lt. Col. Harry E. Rosen
Jack Jacob Rubenston
Irwin L. Sandler
Ida Shwayder
Sylvia Steller Siegal
Rosa Silversmith
Walter Simon
Hattie A. Spitzer
Irene Strachman
Dr. Louise Taichert
Gregory Alan Tepper
Pearl B. Weiner
Dr. Norman Weiner
Abe Weinstock

TRIBUTES

Tributes through December 31, 2020

Marvin Appel Camp Fund

In Loving Memory of:

Sammy Sugarman
Karen Sugarman Huber

Archenhold Shwayder Camp Scholarship Fund

In Loving Memory of:

Ed Diner
Lois & Sherman Rich

Barotz Family Mitzvah Day Fund

In Honor of:

Laura & Garrick Mitchell
Marilyn Kaplan

Building Expansion Capital Improvement Fund

In Loving Memory of:

Ed Diner
Bret & Kim Siepman

Trudy Dock Scholarship Fund

In Loving Memory of:

Trudy Dock
Laurie & Lester Wolf
Benita & Arnold Idelberg
Lynne & Lance Forstot
Cathy Scott
Stephen, Nancy, Zachary & Brian Kiefer
Brian Bostron
Aurelia Perry
Richard Shapiro
Kathy & Bernie Steinberg
Patricia Phillips
Barbara Mishell
Beth Tittman &
Hesh Weinstein
Sheldon & Janet Fisher
Mimi Weil
Gail R. Sigman
Sandy & Steve Goodman
Judy & Stanley Kippur
Mandell & Pat Winter
Tara Schneider &
Paul Martsolf
Laure & Scott Levin
Jill & Howard Snyder
Andrea & Scott Stillman
Jamie & Mark Idelberg
Henny Kaufmann
Marilyn Boslow
Barbara & Steve Zimmerman
Risa Tatarsky &
Michael Clapman
Kay Watson
Dona & Myron Oliner

Leland Rudofsky
Ernie Stone
Shirley, Sonny, Cliff &
Bob Beck
Steve & Marci Rottler
Maxine & Steve Miller
Bev Rouleau & Family
Dale & Tom Lyneis
Sylvia & Barry Scher
Elise & Brian Barish
Brent & Julie Morse
Jackie Frazin
Barbara Steinberg, The Weisbergs,
The Wilners, The Neumanns
Christina Yarmul &
Sue Pollock
Marcia Snyder
Betty Karsh
Elaine & Sheldon Hayutin
Melissa McDowell
Sara Howell
Lisa Shafer
Audrey Ahrendt
Richard Field
Glenda Kaufman
William & Lynn Elliot
Robyn Friedman
Bernie & Shana Katz
Judy, Joel & Shelby Klein
Ed Diner
Jackie Frazin

Family Promise Fund

Donations:

Edward & Robin Hoffman

Frankel/Winter Camp Fund

In Loving Memory of:

Harriett Sobol
Gladys Sobol Samuelson
Sara "Sis" Sobol
Tina Sobol Shaner
Elsa Sobol
Harriet Sobol
Gloria & Max Kern

In Honor of:

Dr. Stuart Frankel for so deserving retirement
after 43 years
Robin & Steve Chotin
Steve Brodsky celebrating his 60th birthday/
thank you for uplifting our family
Laure & Scott Levin

General Fund

Donations:

In Loving Memory of:

Sheldon Levy
Debbie & Michael Feiner
Bud & Marilyn Hyman
Henny Kaufmann
Michael Londer
Kathy & Jerry Berenstein
Faye & Wayne Gardenswartz
Mark & Susan Linkow
Steve & Beth Cole
Denzil & Renee Quick
Wendi & John Labbie
Debbi & Earl Bagby
Susan Miller
Marci & Steve Rottler
Beatrice F. Seeman
Sharon A. Seeman
Earl B. Lewis
Alan & Linda Lewis
Jess Kortz
Pearle Rae & Mark Levey
Stanton Rosenbaum
Pat & Ralph Silversmith
Joe Kaufman
Stan & Liz Wolfson
Sandy & Duke Kaminsky
Henny Kaufmann
Martin Gross
Sharon Zuckerman
Renee Gross
Ed Diner
Andy & Fran Gaukt
Vicki, David, Corey & Marissa Goldman
Hanna & Mark Shaner
Alan Kris
Mimi Weil, Maryann & Dick Weil
Henny Kaufmann
Suzi & Rocky Miller
Gerre Shenkin
Arnold Goldblatt
The Goldblatt Family
Barbara Moskowitz
Henny Kaufmann
Eugene Gladstone
William(Bill) Feldman
Sidney Edwards
Bryna Edwards
Sally Gass
Ed & Carolyn Koplin
In Honor of:
In appreciation of Temple Emanuel Clergy &
Covid Relief
Suzi Scher
Clayton Engen for his baby naming
Charles Goretsky
Zeca Pockross celebrating his Bar Mitzvah
Keith & Mimi Pockross

TRIBUTES

Horwich Camp Scholarship Fund

In Loving Memory of:

Martin Trotsky
Linda Stevenson

In Honor of:

Rabbi Bob Davis
Bill Cook

Max Frankel Fund

In Loving Memory of:

Vicki Simon
Ronald Simon & Family
Ed Diner
Randall Rich & Patricia Miller

Michael Schatz Memorial Lecture Series Fund

In Loving Memory of:

Sheldon Levy
Joe Kaufman
Barbara & Ed Brooks
Joe Kaufman
Joe Wenner
Enid & Steve Wenner
Joe Kaufman
Arlene & Herb Galchinsky

Katchen-Heller Israel Study Tour Fund

In Loving Memory of:

Sheldon Levy
Florrie Katchen

In Honor of:

Wishing Florrie Katchen a complete & speedy recovery
Zelda Friednash

K'vod Catering Fund

In Loving Memory of:

Richard & Hanna Simon
Ronald Simon
Ed Diner
Andrea & Scott Stillman

Celeste Lewin Sobol Music Fund

In Honor of:

Cantor Elizabeth Sacks, in appreciation
Rabbi Rick Brody & Nancy Benyamin

Preschool Fund/ECC

In Loving Memory of:

Maxine Davine
Phillip Stahl

Rabbis' Discretionary Fund

Donations:

Mitch & Miriam Brodsky

In Loving Memory of:

Sheldon Levy
Larry & Shirlee Londer
Amy & Tom Fortner
Bobbe Cook
Ira & Cynthia Shwartz
Steve Sim Roberts
Paula Roberts
Sadie Golder Cohn
Carol F. Plotka
Barbara Gray
Karen & Arnie Stein
Lynne & Andy Greene
Irving Hoffman
Dr. Edward & Robin Hoffman
Jerome S. Friedman
Carol Jean Friedman
Trude Bershof
Jean Oksner

In Honor of:

The beautiful High Holy Day Services
Beth Lippa
Our Incredible Clergy
Robin Secher
Kathy Judd celebrating her special birthday
Barbara Gilbert

Rabbi Joseph Black Social Justice Fund

Donations:

Suzi Scher

In Loving Memory of:

Sheldon Levy
Lori & Lou Sigman
Joe Kaufman
Judy Joseph & Mark Greenberg
Terry Dufrene
Barbara & Herschel Cravitz
Jay Gershen
Lori & Lou Sigman

In Honor of:

Bennet Allan Manahan
Nancy Wayne

Rabbi Steven E. & Joyce Foster Fund

Donations:

Dr. Usha Varma

In Loving Memory of:

Karen Jean Slade
Sheila Slade
Dr. Emanuel Friedman
Joni & Larry Litvak
Zelie Berenbaum
Harriet Berenbaum

In Honor of:

The recovery of Debbie Foster
Henny Kaufmann

Religious School Fund

In Honor of:

Stan Boxer celebrating his special birthday
Bob & Myrna Siegel

Maurice B. Shwayder Camp Fund

In Honor of:

Brent Handler
John Dyer

Shwayder Camp Capital Campaign

In Loving Memory of:

Sheldon Levy
Jane & Don Friedman
Laurie & Connell Saltzman
Joe Kaufman
Helen Reuben & Mort Rosenbaum
Denny & Jo Battock
Ed Diner
Jamie & Mark Idelberg
Ernie Stone
David Pells
Morey Melnick
Trude Bershof
Cecile Cohan

In Honor of:

David Foster
Gary Yourtz

Sisterhood Flower Fund

In Honor of:

Wishing Cindy Friedland a speedy & complete recovery
George & Allie Lupiba

Elyce Rae Tittman Fund

In Loving Memory of:

Amelia (Mickey) Rittenbaum
Bess Waterman
Janice & Albert Dinner
Joe Kaufman
Beth Tittman & Hesh Weinstein
Joel Schur
Jay & Alyson Tittman
Beth Tittman & Hesh Weinstein
Henny Kaufmann
Barbara Vicksman Okner
Beth, Jay, Alyson, Paige, Jade, Axel & Aja
Gayle Weinstein
Trude Bershof
Beth Tittman & Hesh Weinstein

In Honor of:

The recovery of Bev Rouleau
Beth Tittman

Tree and Art Fund

In Loving Memory of:

Etya Bor
Vladimir Bor

We recognize with sorrow the passing of:

Trude Bershof – *sister of Lois (Sherman) Rich*

Ed Diner – *husband of Jeanne Diner z”l; father of Randy Diner*

Trudy Dock – *wife of Stanley Dock z”l; mother of Scott (Kathy) Dock; grandmother of Lauren and Kallie*

Eugene Gladstone

Joe Kaufman – *husband of Glenda Kaufman*

Barbara Moskowitz – *aunt of Debbie (Frank) Piazza*

Lewis Neiberg – *father of Hilary (Rabbi Eliot) Baskin*

Dee Rosenblum Paul – *mother of David (Bobbi) Paul*

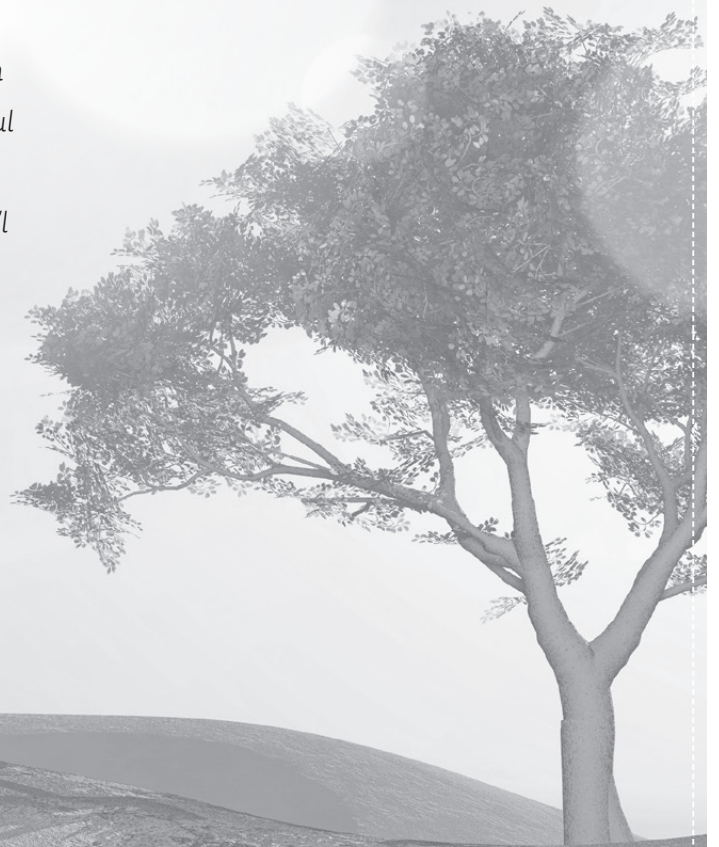
Traci Shimel – *sister of Lisa (John Davis) Shimel*

Thelma Teitelbaum – *wife of Bernard Teitelbaum z”l*

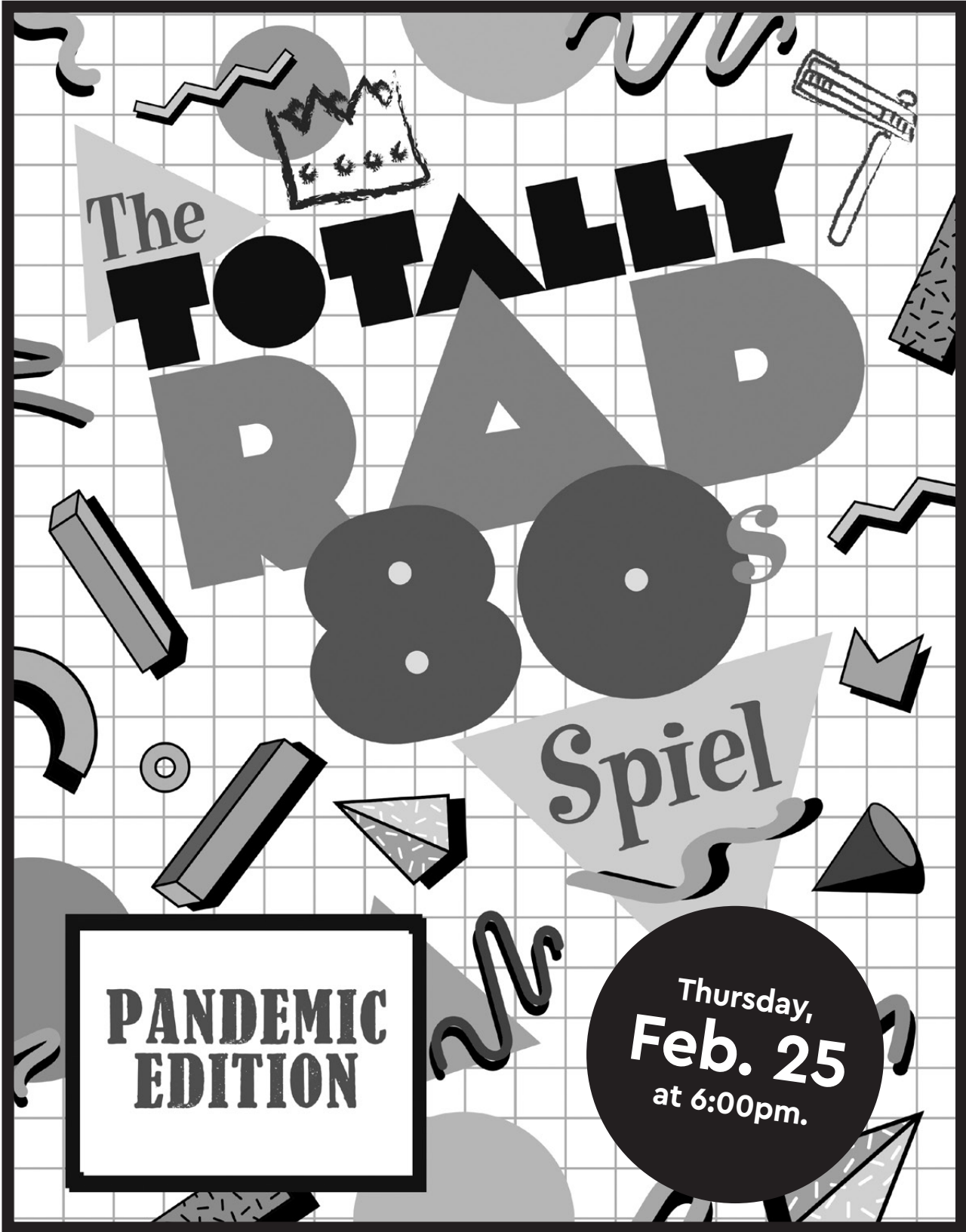
Pauline Tyo – *mother of Paula (Ronald) Englander*

Arlene Wedgle – *aunt of Trudy (Steve) Lasky*

May their memory be for a blessing



SAVE THE DATE
for a **TOTALLY RAD** Purim!



The **TOTALLY RAD** Purim Spiel

PANDEMIC EDITION

Thursday,
Feb. 25
at 6:00pm.



CONGREGATION EMANUEL

51 Grape Street
Denver, CO 80220
303.388.4013
www.emanueldenver.org

Non Profit Org
U.S. Postage
PAID
Permit No. 188
Denver, Colorado

VIRTUAL WORSHIP + HOLIDAY EXPERIENCES

Currently, all worship and holiday services are being streamed on our Facebook page, facebook.com/TempleEmanuelDenver

Please join us there to worship together!

Our current weekly Shabbat schedule is:

Fridays at 6:00 p.m. : Shabbat Event Service

Saturdays at 9:00 a.m. : Young Family Shabbat Experience

Saturdays at 10:00 a.m. : Torah Study

Saturdays at 11:00 a.m. : Shabbat Morning Service

