



echo

B E T H E L P H O E N I X

November 2023

Volume No. 9 | Cheshvan/Kislev 5784

Hebrew School Turkey Train

Sunday, November 19 at 11:00 am

Donate frozen turkeys and non-perishable side dishes to help families in need this Thanksgiving!



Services Schedule

Shabbatot & Yom Tovim



Kabbalat Shabbat on Fridays at 5:45 pm is virtual only on the daily minyan link:

tinyurl.com/BEC-minyan

Shabbat morning is in-person or streaming at youtube.com/@bethelphoenix5024/streams

Zoomdalah, Havdalah and Saturday evening Ma'ariv are virtual only at:

tinyurl.com/BEC-minyan

11/4: Shabbat Vayera

9:30 am | Shaharit

12:30 pm | Be'er HaTorah (after Kiddush)

5:45 pm | Zoomdalah

6:15 pm | Maariv & Havdalah

11/11: Shabbat Chayei Sara | Mevarchim Chodesh | Birthday Shabbat | Bat Mitzvah of Sarah Klein

9:30 am | Shaharit

5:45 pm | Zoomdalah

6:15 pm | Maariv & Havdalah

11/14: Rosh Chodesh Kislev

7:00 am | Shacharit

11/18: Shabbat Toldot

9:30 am | Shaharit with Cantorial Soloist Jessi Grossman-Giordano

10:00 am | Dorot Service with Teen-led Activity

5:45 pm | Zoomdalah

6:15 pm | Maariv & Havdalah

6:30 pm | USY Teen Havdalah and Movie Night

11/25: Shabbat Vayetzei | Anniversary Shabbat

9:30 am | Shaharit with Cantorial Soloist Jessi Grossman-Giordano

12:30 pm | Be'er HaTorah (after Kiddush)

5:45 pm | Zoomdalah

6:15 pm | Maariv & Havdalah

Our next Kabbalat Shabbat in the Round Dinner will be on Shabbat Hanukkah, December 8, 5 pm (Note the time change for candle lighting!)

Thanksgiving Minyan

Minyan on Thanksgiving Day will be held on Zoom at 8:15 am. There will be no evening minyan.

Thanksgiving Break

Hebrew School closed November 22 and 26

Preschool closed November 23 and 24

Office closed November 23, 24, and 26

Daily Community Minyan

All Daily Community Minyanim are on Zoom with hybrid meetings on Torah reading days and Wednesday evenings when Hebrew school is in session.

Join the virtual minyan at:

tinyurl.com/BEC-minyan

Sunday & National Holidays

8:15 am and 5:45 pm

Monday

7:15 am (Hybrid) and 5:45 pm

Tuesday

7:15 am and 5:45 pm

Wednesday

7:15 am and 5:45 pm (Hybrid, student led)

Thursday

7:15 am (Hybrid) and 5:45 pm

Friday

7:15 am and Kabbalat Shabbat 5:45 pm

Shabbat & Yom Tov

Candlelighting

11/3 | 5:16 pm

11/10 | 5:10 pm

11/17 | 5:06 pm

11/24 | 5:03 pm

Havdalah

11/4 | 6:12 pm

11/11 | 6:07 pm

11/18 | 6:03 pm

11/25 | 6:01 pm

Please check our website and weekly emails for service updates and Minyan requests.

November Learning

11/2, 11/9, 11/16, 11/30

WORLD OF TALMUD THURSDAYS | 8:00 AM

Weekly Talmud Study with
Rabbi Stein Kokin
At Beth El and on the daily minyan link at
www.tinyurl.com/bec-minyan



Hebrew 101: 11/6, 11/20
Intro to Judaism: 11/13, 11/27

HEBREW 101/INTRO TO JUDAISM MONDAYS | 7:00 PM

Hebrew 101 is a great class for beginning readers or those looking to refresh their skills. Intro to Judaism is for those considering conversion or those wishing to learn more. Register
bethelphoenix.com/event/intro-to-judaism/hebrew-101.html



11/4, 11/18, 11/25

BE'ER HATORAH SATURDAYS | AROUND 12:30 PM

Shabbat Torah Study with
Rabbi Stein Kokin following
Kiddush on Shabbat



11/12, 11/26

BLANKET BOOSTERS SUNDAYS | 1:00 PM

Volunteer crochet and knitting club!
All blankets created are donated to children in crisis.
Click to join <https://zoom.us/j/92408568672>



11/15

BOOK GROUP WEDNESDAY | 6:45 PM

Love reading? Love schmoozing?
Join us as this month we discuss the book *Sam* by
Allegra Goodman. Register at
bethelphoenix.com/event/book-group2.html



11/16

Chair Yoga Thursday | 2:00 pm

Join us for a Chair Yoga session.
Stretch, breathe,
and clear your mind in this low-impact class.
Register at bethelphoenix.com/event/chair-yoga.html



11/12

Chai Tea Women's Study Group Sundays | 12:30 pm

There are many Jewish spiritual practices that allow us to open ourselves to find the holy in our lives. Hybrid learning sessions. In-person at Beth El. Register at bethelphoenix.com/event/chai-tea1.html



11/16

Lunch & Learn Thursday | 12:00 pm

Enjoy lunch and learn with Wendy Rozov
\$8 per person for lunch.
bethelphoenix.com/event/lunch-and-learn.html





R. Nitzan Stein Kokin

הרעות - חיים גורי - 1948

על הנגב יורד ליל הסתיו
ומצית כוכבים חרש חרש
עת הרוח עובר על הסף
עננים מהלכים על הדרך

...
אך נזכור את כולם
את יפי הבלורית והתואר
כי רעות שכזאת לעולם
לא תיתן את ליבנו לשכוח
אהבה מקודשת בדם
את תשובי בינינו לפרוח

The Friendship - HaRe'ut - by Chayim Gouri, 1948

In the Negev, the autumn night falls,
And it kindles the stars in the quiet,
As the breeze rustles outside the door
And the dust settles down on the highway.

Time goes on, do we notice at all
How the months have gone by one by one?
Time goes by, there are few of us left,
And so many we once knew are gone.

Chorus

They are gone from our midst,
All their laughter, their youth and their splendor.
But we know that a friendship like that,
We are bound all our lives to remember,
For a love that in battle is forged,
Will endure while we live, fierce and tender.

Oh, the friendship we bore without words,
It was silent and grey, it was wordless.
From the pain and the blood of those days,
It remains with us, ardent and yearning.

In the name of that friendship we know,
In its name we'll go on, every forward,
For those friends, when they fell on their swords,
Left us this precious gift to recall them.

Chorus

They are gone from our midst,
All their laughter, their youth and their splendor.
But we know that a friendship like that,
We are bound all our lives to remember,
For a love that in battle is forged,
Will endure while we live, fierce and tender.



Dear Chaverot and Chaverim,

I keep contemplating what I could write to you in these days with hourly changing news from Israel and around the world. Again, I find ourselves drowning in the noise of fresh headlines, background analysis, predictions of the future. Collectively we have gone through emotions of anxiety, fear, rage, grief and sorrow hurling among us like a whirlwind. We are vulnerable on many fronts, and yet we are also strong - stronger than ever. Strong in our coming together as a people standing side by side, in Israel and here. Strong with the clarity of the song "אין לי ארץ אחרת" - "I have no other land". And while we have powerful friends and allies, we also know, that like in the days of the Maccabees we need to rely on our own resilience as a Jewish people.

Maybe something that will help us grow our resilience as Jews this fall and winter is taking on educating ourselves more about Israel. Not just in the political sense, but delving into an area that you haven't explored yet. Perhaps modern Israeli poetry or literature, maybe exploring an archeological or geographical interest, maybe art or innovation, maybe even pick up a Hebrew course again. Modern Israel has a richness in history and diversity worth exploring and it might help us feel closer and deepen our connection.

With Thanksgiving later this month, I also want to remind ourselves how much resilience and strength we can receive from gratitude. I am grateful that we as a people were able to find each other and stand together across political and religious differences. That not only in Israel, but also here in this country, we put aside our divisions for now and move forward as allies from the sidelines to support our brothers and sisters in Israel.

Let's also not forget that here at Beth El we had a beautiful High Holy Day experience, reconnecting and coming together to find strength in our community. I am so very thankful for that. While this feels a little far away already, the new Jewish year has just started. Don't stay apart, as we go through these trying times. We have so many opportunities for you to connect and grow in strength, be it by joining our Musical Kabbalat Shabbat (upcoming on December 8), our daily minyanim, Board Game Sunday on November 19, our adult education classes or coming to a benefit Chamber Concert on November 30 in support of the Israeli Kibbutzim that were hit hardest.

Find that bond of friendship that holds us together that Chaim Gouri speaks about.

Am Israel Chai!

Rabbi Nitzan Stein-Kokin



Audrey Wolff
President

Dear Friends,

The last time I spoke to all of you was on Kol Nidre when we were gathering to reflect and welcome in the new year, feeling the warmth and comfort of our Beth El community, hearing the beautiful voice of Cantor Nissim, and being inspired by the words of our Rabbi. Who knew a few short weeks later, all would change when we woke to the news of the terrorist attack on Israel.

Since then, many of us find ourselves carrying out our

daily lives under a sheen of disbelief and sadness. Yet, we have come together as a community to mourn, volunteer, and vow not to be defeated, Hatikvah and cries of Am Yisrael Chai resonate all over the world.

Recently, we read parsha Beresheet. During her sermon, our Rabbi eloquently described how even when the world is being covered in darkness, right after we find light. That is our responsibility - to find light and find the good, even when challenging.

Here at Beth El there is much light and goodness. First, I wish to thank everyone for joining us during the High Holidays both in the sanctuary and the 200-400 people online. It was wonderful to be together. Thank you to our social action committee for organizing our annual Kol Nidre food drive. Once again our community gave generously to support NourishPHX. Thank you to everyone who donated to our successful annual appeal drive. Thank you to Barry Becker and Emily Bogusch, for inspiring us and reminding us how important it is to support our current and future Beth El families.

More recently, several acts of kindness have shone through: the anonymous monetary donations labeled "to Israel," the gift of flowers delivered to our shul, the drop-ins and patrolling by our local police in addition to our hired security, and the check-ins of numerous friends supporting the Jewish community.

Simply by showing up and demonstrating our resilience, we make Beth El a strong and bright light to our community.

Over the past 2 weeks, we are working hard to keep Beth El a vibrant congregation. Our Ritual, Budget, Board, Security, Membership, Education, and Preschool Parent Committees all met and are eagerly planning for the upcoming year.

We celebrated the Bar Mitzvah of Adam Woldoff, and supported his Bar Mitzvah project for the Lone Soldiers. We sang, and ate together at Kabbalat Shabbat. We began davening with our new Lev Shalem siddurs, and honored our beloved Cantor Sam Goldman by inscribing each siddur in his memory.

Our Kadima students hosted a Kafe Kadima fundraiser, we formed new chavurahs, and planned upcoming tikkun olam projects.

Together, we can support one another- make that phone call, extend a kind word, or simply share your presence.

Together, we will continue to shine brightly.
Audrey Wolff

BETH EL WOMEN'S LEAGUE

We're going to have a large gathering at The Torah Fund Tea honoring Rabbi Stein Kokin on November 2. We will enjoy scones, cute little sandwiches, dessert and tea as we socialize and support Torah Fund and our Rabbi. We will post photographs in the next Echo. It's too late to RSVP now, but be sure to sign up for future BEWL events.

As a member of BEWL, you also have access to all the programming of the Women's League of Conservative Judaism (WLCJ). Being Environmentally Jewish is scheduled for Sunday, November 5, at 7:30 pm Eastern Standard Time, which would be 5:30 pm here. Rabbi Margie Cella will teach through Torah Study why we are commanded by God to care for our earth. To register, visit wlcjmembers.org/register/38. Another interesting program coming up is Conversations Between Sisters: Addressing Homelessness and Food Insecurity: Mitzvot, Motivations and Methods. Speakers from Israel and the U.S. will address the question, how do we fulfill the mitzvah of caring for the most vulnerable members of our society today when the need is so great? It also ties in with the theme of Torah Fund this year, All of Israel is Responsible for One Another, kol yisrael arevim zeh ba'zeh. It's scheduled for Sunday, November 19, at 9:00 am in Phoenix. To register, visit wlcjmembers.org/register/35.

Please remember to support the annual Turkey Train on Sunday, November 19, from 11:00 am - 12:15 pm. Donations are distributed to needy families in our area. There are strong historical connections between Judaism and Thanksgiving. Most of the Pilgrims were Puritans, a branch of the Protestant faith who strongly identified with the historical traditions and customs of the Israelites in the Bible. Many people believe that the Pilgrims modeled Thanksgiving after the holiday of Sukkot, as they are both harvest festivals that take place in the fall. Sukkot is also known as z'man simchateinu, the time of our rejoicing, as our ancestors gave thanks for the conclusion of the harvest and the bounty of the land.

Happy Thanksgiving,
Eileen Bloom
President, BEWL
STRONGER, TOGETHER, SISTERHOOD



Alicia Moskowitz
Executive Director

Dear Friends,

I was heartbroken to hear of the terrorist attack on October 7. During one of our most joyful holidays, a horrific tragedy unfolded. While we pray for Israel and our people there, I want to assure you that your safety and security are of the utmost importance to all of us at Beth El as well. Though you may not know or notice, we remain vigilant and proactive about protecting all who enter our doors. We are also in close contact with our partners in the government, the local

Jewish community, and the private security community to ensure we are doing all we can to keep us all safe.

Here are some of the new things we are working on:

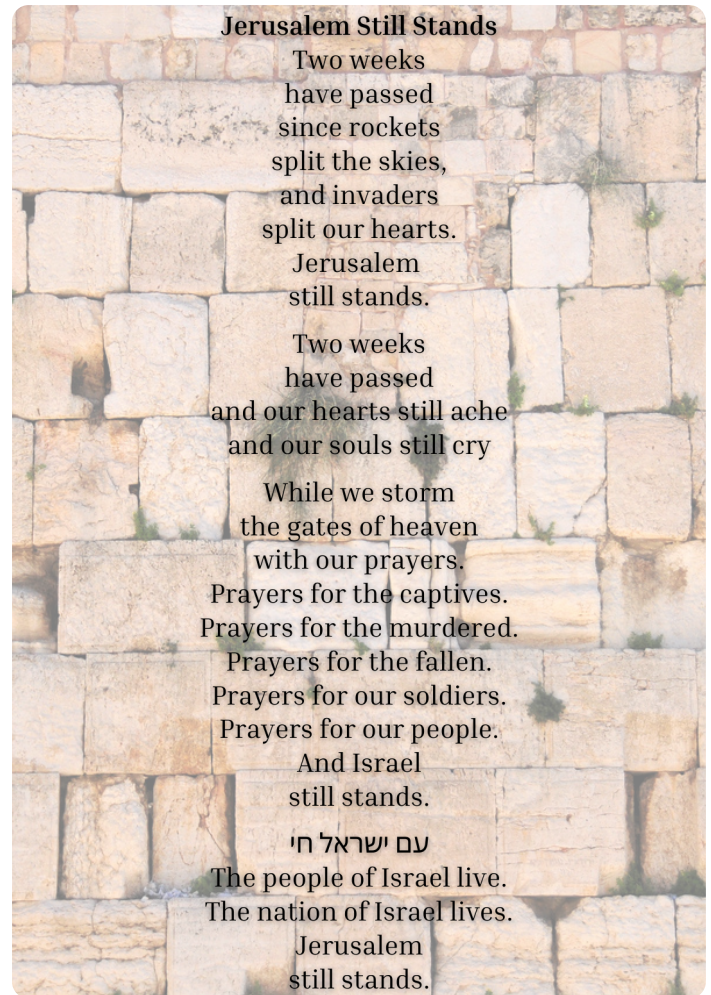
1. Hiring an armed guard when our schools are in session (preschool and Hebrew school) for the next couple months at least.
2. Working with a professional consultant to walk through our campus to ensure we have the proper infrastructure as well as review our emergency protocols.
3. Scheduling regular lockdown and evacuation drills.
4. Completing security projects with new funding from the AZ Department of Homeland Security's Nonprofit Security Grant Program, including cameras for the preschool, door access system upgrades, new doors for the youth lounge and pavilion, and bollards to protect our main entrances.
5. In the Hebrew school, covering the windows, adding emergency supplies to each classroom, and instituting new pick-up protocols.

We also will continue to do the following as we have for the past several years:

1. Hiring uniformed, off-duty Phoenix police officers to be on-site during Shabbat morning and High Holy Day services.
2. Hiring armed security guards for events.
3. Applying for new grant funds to continue hardening our facilities.
4. Practicing evacuation, lockdown, and fire drills.
5. Monitoring the security threat level with our contacts at the FBI, Phoenix Police, Secure Community Network, and Jewish Community Relations Council.
6. Representing Beth El on the Phoenix Police Department's Jewish Advisory Council.

Beth El has dedicated, trained volunteers who attend special events and services to collaborate with our guards and police. Thank you to Ben Cooper, Michael Apfel, and the rest of the team for their commitment to our community. If you want to join them, please let me know so we can connect you.

Finally, I want to share this poem with you by Alden Solvy called "Jerusalem Still Stands," as it has brought me some comfort and hope. Stay well and safe, friends.



Building Our Community

The Community Building/Membership committee is hard at work growing connections and building meaning for the members of our community. We are busily reaching out to new members who recently joined our community. We also recently held our first annual Chavurah Kick-Off event, creating small groups ("Chavurahs") within the larger Beth El Community. At the Kick-Off, each Chavurah met, got to know each other a bit and planned their first two events. Don't worry if you missed it – you will get another chance to join a Chavurah next year. We are also busily forming plans for the rest of the year. If you want to help us build our community, just call the synagogue office. We would love to have your help.

-Steve Winkelman



Susan Finks
Hebrew School
Director

Dear Families,

I am thrilled to work at Beth El in my new Interim Hebrew School Director role. I have been active over the last twenty-five years at Beth El, wearing many hats in the Preschool, Talmud Torah, on the board, and my adult B'nai Mitzvah. Filling Nanci's shoes won't be easy. We have wonderful, warm, caring, professional teachers, and staff.

Are you looking for a chance to do a mitzvah? Here is your chance to participate in tzedakah! Look for

emails coming this month with two big donation drives: Our Annual Turkey Train (donate frozen turkeys and sides), and a Holiday Tzedakah project (donate gifts for people who may not otherwise get any.)

In addition, Adam Woldoff's mitzvah project is supporting Lone Soldiers in Israel. For more information, go to evjcc.org/lonesoldierprojectAW. Modeling mitzvot yourself is a great way to teach your children about tikkun olam and tzedakah. One of my favorite memories was grocery shopping with my son Matthew to donate a Thanksgiving dinner to a needy family. We looked at the list as we wandered through the store; we discussed purchasing large boxes of dry goods instead of small ones so we were helping a family with more than one meal. We chose pull-top cans in case the family did not have a can opener. More information will follow on these worthy causes. Keep an eye out in your weekly newsletter for more information.

With the war in Israel, I have made some security updates. I have revised lockdown, fire drill, and evacuation procedures. The windows are covered, and we have new pickup procedures in place. During the month of October, we had an increase in security guard patrol as well. We remain vigilant and proactive in keeping our school safe.

Sincerely,
Susan Finks



Elijah Costales-Chevalier
Youth Engagement
Coordinator

Shalom,

Youth programming at Beth El is stronger than ever! This year has already seen: a USY regional trip to Universal Studios, Shofar Factory, Rosh Hashanah apple artwork, Yom Kippur teen talks on conflict resolution, teen havdalah ceremony, sleepover in the sukkah, Sukkot pancake breakfast, delicious fundraising events, and so much more!

We are looking forward to another month of fun

activities that foster connection to Judaism and one another. Kadima-aged children can sign up on our website for a havdalah kit making event. All teenagers are encouraged to join us this month for havdalah and movie night. Additionally, we have our ongoing USY Lunch and Learn sessions helping teens integrate Jewish identity and practice into their lives.

It is a critical time for our Jewish youth to be increasingly involved with and supported by our synagogue. Thank you for your continued support of our next generation.

Am Yisrael Chai!

Elijah Costales-Chevalier



Social Action Update

A message from NourishPHX to Beth El:

We wanted to send over the INCREDIBLE numbers for the Yom Kippur drive y'all did for us about a month ago!

Clothing – 313 pounds | Food – 811 pounds

This totals out to 1,124 pounds of TOTAL Donations!!!!

Wow, this is incredible and goes so far with our clients.

Thank you so much to the entire Congregation for the generosity and the support. We could not feed our neighbors, clothe our neighbors, without y'all's support.

We appreciate you all immensely!!



Joanie Charnow
Preschool Director

Dear Families,

October was a very busy month. When we renovated our playground, we added a pergola that could also be made into a Sukkah. The children made decorations, moved the drive-through-restaurant furniture and replaced it with tables and chairs. The classes took turns having snack and lunch in the sukkah. They joined the Rabbi in the big sukkah to learn how to shake the Lulav and had fun smelling the Etrog. The classes made flags and

marched to the Synagogue for Simchah Torah where Rabbi did Shabbat with them and showed them the Torah.

Right after that everything changed, and we want to make sure everyone is safe, so our parking lot has a guard and the Phoenix police do their paperwork in the parking lot and patrol through as often as they can. We are teaching our young children to be safe and explaining why we are locking our doors. We do fire drills once a month and now we have added a lockdown drill.

The weather started to get cooler but then the heat came back. It does not bother the children so much as they just want to play on our exciting playground. We brought in a petting zoo for our annual fall festival. There was also a pumpkin maze, face painting, art, and Rabbi came over and had Shabbat with us outside. Parents came and volunteered helping us set up, clean up, and lead the centers with the children.

As part of the DES (Department of Economic Security) and First Things First Stabilization Grant, we were fortunate to receive another one-time payment to help us with personnel costs. Our staff work very hard and now I am able to give them incentives with their salary. Even though this is a one-time payment it will be able to help us for the next 8 months.

Have a great month, enjoy your family, and stay safe.
L'Shalom,
Joanie



Gift Shop



HANUKKAH OH HANUKKAH COME LIGHT THE MENORAH

The first night of Hanukkah is December 7, so be sure you are ready! We have even more CANDLES this year: candles from Israel, Candles For A Cause (pink for breast cancer, camouflage for kosher meals for our troops, multi-color for autism and Kids For Courage). We have an amazing variety of Hanukkiot – traditional, modern, electric, and oil. Also available are dreidels, decorations, cookie cutters, and more. We are always stocked with Shabbat candlesticks and candles, memorial candles, kiddush cups, challah trays, kippot and tallit sets.

Reasons to Support Beth El Gift Shop

Exceptional Merchandise, Convenience, and Tax-Free!

Open during Beth El's regular office hours.

Staffing Updates

Message from the Executive Director:

Please join me in saying goodbye to our Administrative Assistant, Ashton Brown, who has been with us since June 2022. We wish him well as he has accepted a new position in the medical field. If you would like to get a message to him, please let me know and I can give you his contact information.

I am very pleased to announce that we also have some new staff members to welcome. Enjoy their messages below and say, "Hi!" next time you are in the office!



M Zavos-Costales

After being in the Beth El community since 2021, I am very happy to now be working for the congregation in my new role as Marketing Coordinator. I will be using my extensive background in visual arts and creative writing to develop marketing materials and amplify Beth El's voice on our website and social media. If there is an event at Beth El you would like to promote or a message you would like to communicate to congregants please do not hesitate to contact me or stop by my office. You can reach me at mzavos-costales@bethelphoenix.com or (602) 944-3359 ext. 106.



Andela Jovovic

I am delighted to introduce myself as the new Office Manager at Beth El Congregation. With over five years of experience in office administration, I am thrilled to be joining this esteemed organization and look forward to working with each and every one of you! I am passionate about creating a positive and productive work environment and believe in fostering strong relationships with both colleagues and members. Please feel free to reach out to me via office@bethelphoenix.com or (602) 944-3359 ext. 104 if you have any questions or would like to connect with our community. Thank you for the warm welcome, and I am excited to embark on this journey with all of you.

Lev Shalem Launch!

Engaging in Jewish prayer, tefillah, is an experience that engages our minds, our bodies, and perhaps most of all – it engages the lev (Hebrew for “heart”). Beth El is excited to have begun using Siddur Lev Shalem for our religious services. Lev Shalem will transform the way we, both as individual congregants and as a communal congregation, engage and interact with Jewish prayer. Please consider sponsoring one of our new Siddurim, dedicated to Cantor Sam Goldman (z”l). Visit bethelphoenix.com/siddurim to sponsor a prayer book.

Why are we making the switch? In a word, Lev Shalem is *More*:

More Accessible

Lev Shalem is an inclusive siddur that is user-friendly regardless of your Hebrew knowledge or familiarity with our services. Equipped with enhanced transliteration, Lev Shalem allows members and visitors of all backgrounds and Hebrew proficiency levels with a greater opportunity to participate and sing throughout our services.

More Understandable

Lev Shalem has easy-to-read, contemporary English translations that fosters a greater connection to the Hebrew liturgy. In most cases, the translations are structured to match the formatting of the corresponding Hebrew, which helps make the correlation between the Hebrew and the English much easier to follow.

Lev Shalem also includes easy-to-follow instructions for congregational participation and choreography that takes place throughout the services.

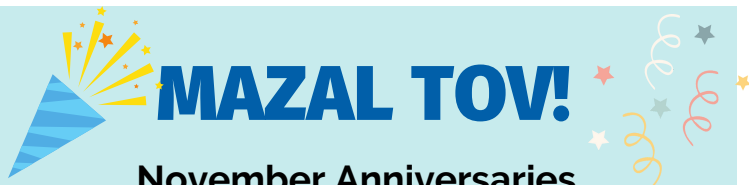
More Relatable

Filled with traditional and modern commentaries, poems, and reflections from some of the most respected Jewish scholars, Lev Shalem fosters opportunities for a deepened awareness and connection to our liturgy. Thanks to these meaningful enhancements, we are confident that you will:

- Learn new things about our liturgy and ritual practices.
- View specific prayers and psalms with a whole new perspective and understanding.
- Further appreciate the richness, wisdom, and beauty of our liturgy.



Smachot



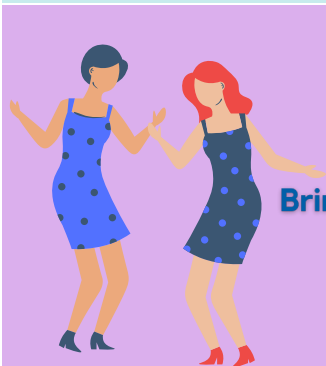
November Anniversaries Anniversary Shabbat 11/25

Date	Names	Years Married
7	Gary & Michell Sorley	8
10	Max & Froma Allen	61
15	Phillip & Cheryl Jalowiec	43
18	David & Maureen Kist	39
18	Benjamin & Esther Zlochower	73
21	David & Carrie Melkin	19
22	Daniel & Evie Rosen	3
24	Sean & Rebecca Karlin	22
25	Jennifer & Steven Achille	9
28	Leslie & Ben Cooper	31
30	Geoffrey Gonsher & Barbara Lewkowitz	38



November Birthdays Birthday Shabbat: 11/11

Date	Names	Date	Names
1	Eric Lynn	22	Rachel Lamb
2	Christie Walzer	22	Jeanne Milstein
5	Eileen Bloom	23	Phillip Jalowiec
5	Erez Kessler	23	Marc Goldstein
8	Linda Barzilai	24	Steven Gelbart
9	Dean Behboodi	24	Sheldon Dashefsky
10	Emily Mallin	24	Edlyn Soderman
13	Leon Zeitzer	24	Sivan Oliver Theobald
13	Daniel Witenstein	25	Saul Elias
14	Wendy Olsen	27	Lara Goldfarb
14	Risa Mallin	28	Danit Polunsky
15	Scott Steingard	28	Renee Hecht
20	Bithia Chavez	29	Rhoda Morris
21	Phyllis Fotinos	29	Myrna Ross
21	David Goldfarb	29	Rory Silverman



ZOOMDALAH!

SATURDAYS @ 5:45 PM

Bring in the new week with a burst of positive energy on Saturday nights before Havdalah. Meet fun people of ALL ages & dance your way into the new week!

TINYURL.COM/BEC-MINYAN

Meeting ID: 924 0856 8672 | Password: minyan | Call-in: (669)- 900 - 6833



To parents Erika and Phillip Isard and grandparents Nanci Siegel Manson and Roy Manson on the birth of Sloan Amelia Isard on September 15!

To Julie and Danny Witenstein on the marriage of their son Matthew Witenstein to Rachel Hoskins on October 22 in Simi Valley, CA.

To grandparents Wendy Rozov and Eric Lynn and great-grandmother Bernice Rozov on the birth of Tzilah Yare'ach Sager to parents Mira Lynn and Jacob Sager on October 14.

To Gregory Einck, husband of our new Office Manager, Andela Jovovic-Einck, on his promotion to Captain as a pilot for DHL Aviation.

To Adam Woldoff and the Woldoff family on Adam's Bar Mitzvah which took place October 21.

Thank you to all who donated this month!

General Fund

Yahrzeit of Ernest Dreiseszun

Herb & Patti Dreiseszun

Yahrzeit of H.M. Dreiseszun

Herb & Patti Dreiseszun

Yahrzeit of Jonie Dreiseszun

Herb & Patti Dreiseszun

Yahrzeit of Sarah Ada Webner

Gerald & Caryll Webner

Yahrzeit of Bryna Canin

Jerry Rosen

Yahrzeit of Lillian Meckler

Stuart Meckler & Edlyn Soderman

Yahrzeit of Alicia Reitz

Nicki Lasky

In Honor of Wayne & Wendy Laskin

Garry Morse

In Memory of Charleen Abramssohn

Audrey Wolff & Steve Winkelman

Rabbi's Discretionary Fund

In honor of Bruce & Barbara Holzman's anniversary

Joan Rothfeld

In appreciation of Rabbi Nitzan Stein Kokin's support and additions to the AWE Project

Risa Mallin

Yizkor

In memory of their loved ones

Barry Cook

Rhoda Morris

Scott Sandler

Shiva Memorial Fund

In honor of Brian Alpert and Daniel Rosen for conducting a beautiful Shabbat service on September 2

Charlotte Adelman

Kiddush Fund

In honor of their birthdays

Irwin Battock

Louis Goldstein

Mel Isaac

In honor of their wedding anniversary

Bruce & Barbara Holzman

In thanks to Ben Cooper for providing comfort

Charlotte Adelman

In honor of Daniel Rosen's birthday

Charlotte Adelman

In honor of Steven & Debra Gelbart's anniversary

Charlotte Adelman

In Honor of Cantor Nissim Nati

Charlotte Adelman

In honor of Rona Goldman's birthday

Charlotte Adelman

In honor of Audrey Wolff's birthday

Charlotte Adelman

In honor of Bruce & Barbara Holzman's anniversary

Charlotte Adelman

In honor of David & Cheryl Rosen's anniversary

Charlotte Adelman

In thanks for the minyanaires kindness and receiving an aliyah during my visit

Ron Perilstein

In honor of their Gary & Lisa Serbin's wedding anniversary

Charlotte Adelman

In honor of Ros Slovin's birthday

Tanya, Justin and Ilan

In memory of the Milstein, Abromovitz, Hoenig, Cohen, Finn families

Jeanne Milstein

In Honor of Beth El's "Minyan Buddies"

Jeanne Milstein

Yahrzeit Fund

Yahrzeit of Lena Adelnra

Charlotte Adelman

Yahrzeit of Marvin Miller

Gerald Levy

Yahrzeit of Evelyn Reinish

Susan & Bruce Berger

Yahrzeit of Anne Green

Lawrence & Rona Green

Yahrzeit of Arthur Green

Lawrence & Rona Green

Yahrzeit of Helen Ernst

Ira Ernst

Yahrzeit of Bob Wade

Edie Wade

Yahrzeit of Lynette Reiss

Martin & Rochelle Reiss

Yahrzeit of Janet Meinstein

Charles Meinstein

Yahrzeit of Elsie Waxberg

Donna Meyerovitz

Yahrzeit of Leah Mendelson

Ted & Joan Mendelson

Yahrzeit of Rose Rokeach Baumrind

Ann Baumrind

Yahrzeit of Dorothy Koppelman

Vicki & Howard Cabot

Yahrzeit of Dorothy Axelrod

Irene Axelrod

Yahrzeit of Albert A. Levin

Marilyn Levin Gimbel

Music Fund

Yahrzeit of Albert Antonowsky

Meryl, Rich, Matt, and Loren Weiss



**Be remembered forever by
Beth El Phoenix with a gift in your
will, trust, retirement account, or
life insurance policy.**

**Contact legacy@bethelphoenix.com
for more information.**

Days of Awe



Thank you to photographers:

Andrea Becker
Emily Bogusch
Vicki Cabot
Renee Cooperman
Cynthia DuBrow
Anita Grossman
Jason Klein
Wayne Laskin

Avi Mallin
Risa Mallin
Hank Markiewicz
Stu Meckler
Jeanne Milstein
Alicia Moskowitz
Steve Nathan

Wendy Rozov
Debra Salins
Lisa Sandler
Edlyn Soderman
Devon Spier
Daniel Stein Kokin
Susan Webner
Steve Winkelman

If you didn't see The Days of Awe project during the 40 days of Elul and the days between Rosh Hashanah and Yom Kippur, you can view them on the Beth El's website and Facebook page. The beautiful photos and inspirational messages by Rabbi Stein Kokin were very meaningful and offer special meanings today. You can also see them on the screen in the Beth El Lobby. They are beautiful enough that you should stop by and get a cup of coffee in the Be'er, take a chair in the lobby, relax, and enjoy the "awesome photos." If you are interested in a hard copy of one of the photos please contact, risa.mallin@gmail.com. A donation has been sent to our Rabbi's Discretionary Fund in honor of the photographers as well as her contribution to the success of this congregational initiative. I encourage you to begin the new year looking at the world around you to see what brings you awe. Take a shot of it and submit it NOW. Send your photos to Risa for next year. We look forward to seeing what you come up with for the Days of Awe Project, 5785.

Risa Mallin and The Chesed Committee

USY Turnaround Trip to Universal Studios



Nanci Siegel-Manson's Last Day as Hebrew School Director



Joan Sitver School Supply Drive



Hebrew School Tefillah



Bird Feeder Making with AZ Jews for Justice





Chamber in the Chapel

benefit concert for Israel

November 30, 2023 at 7:00 pm

an evening of classical music featuring violin, clarinet and piano duo

register at bethelphoenix.com/form/chamber-in-the-chapel.html

USY Lunch & Learn

November 5, 12:30 pm - 2:00 pm

JEWISH LEARNING FOR TEENS



BAT MITZVAH OF SARAH KLEIN

PARASHAT CHAYEI SARA

NOVEMBER 11, 2023 | 27 CHESHVAN 5784

BETH EL USY TEEN

MOVIE NIGHT

SATURDAY, NOVEMBER 18

6:30 - 9:00 PM

JFCS - Phoenix



Please donate new or gently used, clean blankets to help vulnerable people stay warm this winter. Drop off at Beth El lobby through end of December 2023 (or use QR).

Save a Child's Heart - Israel



This Israeli medical organization is currently offering critical aid to injured or displaced Israeli children. Please support this great cause that is close to my family's heart!

Thank you for supporting these important organizations!

Connect With Us!

**office: (602) 944-3359 | email: info@bethelphoenix.com
1118 W. Glendale Ave. | Phoenix, AZ 85021**

.....

Synagogue Staff

A. Nitzan Stein Kokin
Rabbi
rabbi@bethelphoenix.com | ext. 101

Alicia Moskowitz
Executive Director
alicia@bethelphoenix.com | ext. 102

Nina Zamoshkin
Controllor
nina@bethelphoenix.com | ext. 103

Andela Jovovic-Einck
Office Manager
office@bethelphoenix.com | ext. 104

M Zavos-Costales
Marketing Coordinator
mzavos-costales@bethelphoenix.com

Ben Ulan
Program Assistant
bulan@bethelphoenix.com

Wendy Rozov
Adult Education Coordinator
wrozov@bethelphoenix.com

Cantor Emeritus
Sam Goldman (z"l)

Beth El Cemetery

Eli Barzilai
Cemetery Administrator
ebarz@msn.com

Hebrew School & Youth Staff

Susan Finks
Interim Hebrew School Director
sfinks@bethelphoenix.com | ext. 120

Wendy Adair
Hebrew School Assistant
talmudtorah@bethelphoenix.com | ext. 121

Wendy Rozov
Hebrew School Teacher
wrozov@bethelphoenix.com

Elijah Costales-Chevalier
Youth Advisor
elijah@bethelphoenix.com | ext. 124

Michele Gusdorff
Hebrew School Teacher
michele@gusdorff.com

Gail Offenhartz
Hebrew School Teacher
gohartz1@gmail.com

Early Childhood Center Staff

Joanie Charnow
Preschool Director
jcharnow@bethelphoenix.com | ext. 130

Rachel Lamb
Preschool Office Manager
preschool@bethelphoenix.com | ext. 131

Committee Contacts

Steve Winkelman
Membership Chair
swinkelman@cox.net

Emily Bogusch
Hebrew School Chair
emily.bogusch@gmail.com

Board of Directors

Alana Berrett
Ari Hoffman
Brad Ostrow
José Tafla
William Tuttle
Gail Ulan
Danny Witenstein
Sara Zilversmit

Immediate Past President
Greg Harris

Executive Committee

Audrey Wolff
President
awolff@bethelphoenix.com
(602) 944-9033

Barry Becker
Treasurer
barrybeckerlaw@gmail.com
(602) 430-1663

Eileen Bloom
Financial VP
ebloom@bethelphoenix.com
(602) 370-4108

Herb Dreiseszun
Facilities VP
(602) 954-0321
(602) 957-3159 (fax)

Charleen Holt
Secretary
cholt@bethelphoenix.com
(602) 695-6462

Kim Mertens
Education VP
kmertens@bethelphoenix.com
(602) 340-8234



The monument for Barry Handler (z"l)
was installed in September.

Thank you to the Beth El community
members whose generous fundraising
contributed to the funeral costs and
purchase of this monument.

May his memory be a blessing.



Many Thanks to our Golden Givers!

LIFE MEMBERS

Herb & Patti Dreiseszun, Bryan Hill & Leah Pallin-Hill,
Sheldon & Ronda Kottle, Bruce (z"l) & Risa Mallin,
Samuel Pallin, Sheldon & Maddy (z"l) Roth,
Paul (z"l) & Maryjane Sandler, Leon & Evelyn Zeitzer,
Dan & Lynda Ziskin

GIBBORIM

Anonymous, Ben & Leslie Cooper,
Louis & Barbara Goldstein, Gary & Lisa Serbin

SHOMRIM

Barry & Jody Aarons, Mathis & Barbara Becker,
Lewis & Barbara Brown, Ed & Cynthia DuBrow, Ellen Goot,
Terry & Rochelle Kelman,
Marvin Siegel & Eileen Bloom, Sara Ziskin

CHAVERIM

Anonymous, Eli & Linda Barzilai, Barry & Melanie Becker,
Barbara Lewkowitz & Geoffrey Gonsher, Greg & Susan Harris,
John & Kim Mertens, Denton Simmons,
Morton & Joan (z"l) Sitver, Paul & Gail Ulan,
The Witenstein Family, John & Deborah Wolfe

