



echo

B E T H E L P H O E N I X

February 2023
Volume No. 2 | Sh'vat – Adar 5783

Happy Tu B'Shevat!

חג שמחה!

Join us in the celebration of the new year for the trees!

Sunday, February 5

10:00 am | Beth El Metayel Hike at Lost Dog Wash
12601 N. 124th St. Scottsdale, AZ 85259

6:30 pm | Tu B'Shevat Seder at the Stein Kokin Home.
RSVP to rabbi@bethelphoenix.com

Services Schedule



Shabbatot



Friday at 5:45 pm is virtual only on the daily minyan link:

tinyurl.com/BEC-minyan

Saturday morning is in-person or streaming at:
www.facebook.com/bethel.phoenix

Saturday evening ZoomDalah, Ma'ariv, and Havdalah are virtual only at:
tinyurl.com/BEC-minyan

2/4: Beshalach | Shabbat Shirah

9:30 am | Shaharit
1:00 pm | Be'er HaTorah Study Session
6:00 pm | ZoomDalah
6:30 pm | Ma'ariv & Havdalah

2/11: Yitro

Birthday Shabbat

9:30 am | Shaharit
1:00 pm | Be'er HaTorah Study Session
6:00 pm | ZoomDalah
6:30 pm | Ma'ariv & Havdalah

2/18: Mishpatim | Mevarachim HaChodesh Shabbat Shekalim

9:30 am | Shaharit
10:15 am | Alternative Meditation Shabbat
1:00 pm | Be'er HaTorah Study Session
6:00 pm | ZoomDalah
6:30 pm | Ma'ariv & Havdalah

2/25: Terumah

Anniversary Shabbat

9:30 am | Shaharit
1:00 pm | Be'er HaTorah Study Session
6:15 pm | ZoomDalah
6:45 pm | Ma'ariv & Havdalah

Sign up for our weekly email at
www.bethelphoenix.com
for the most up-to-date service schedules
and activities.

Daily Community Minyan

ALL Daily Community Minyanim are on Zoom with a few hybrid meetings throughout the week for Torah readings. Hybrid = In Person and on Zoom. Join the virtual minyan at:
tinyurl.com/BEC-minyan

Sunday & National Holidays

8:15 am and 5:45 pm (2/20)

Monday

7:15 am (Hybrid) and 5:45 pm

Tuesday

7:15 am and 5:45 pm

Wednesday

7:15 am and 5:45 pm (Hybrid when Talmud Torah is in session)

Thursday

7:15 am (Hybrid) and 5:45 pm

Friday

7:15 am and 5:45 pm (Hybrid)

Tu B'Shevat

begins with sundown on Sunday, 2/5

Rosh Chodesh Adar

begins with sundown on Tuesday, 2/21
Wednesday, 2/22 | 7:00 am Morning Minyan

Shabbat

Candlelighting

Havdalah

2/3 | 5:43 pm

2/4 | 6:41 pm

2/10 | 5:50 pm

2/11 | 6:47 pm

2/17 | 5:56 pm

2/18 | 6:53 pm

2/24 | 6:02 pm

2/25 | 6:59 pm

February

Lifelong Learning

@ Beth El

Register at bethelphoenix.com
or call (602) 944-3359

2/2, 2/9, 2/16 & 2/23



THE WORLD OF TALMUD THURSDAYS | 8:00 AM

Learn Talmud with Rabbi Stein Kokin
Email rabbi@bethelphoenix.com to register
and receive source sheets
Click to join <https://zoom.us/j/92408568672>

2/2 & 2/9



Elisha the Prophet Thursdays | 11:00 am

New four-session class at Beth El in partnership with
the Bureau of Jewish Education. \$58 course fee
Instructor: Rabbi Stein Kokin
Click to register www.bjephoenix.org

2/4, 2/11, 2/18 & 2/25

BE'ER HATORAH SATURDAYS | 1:00 PM

Shabbat Torah Study with
Rabbi Stein Kokin
In person following
Kiddush on Shabbat



2/8



BOOK GROUP WEDNESDAY | 6:45 PM

Love reading? Love schmoozing?
Join us as we discuss the book of the month.
See the enclosed flyer for the November book title.
Click to join <https://zoom.us/j/948321834>



2/12 & 2/26

Ta Shema: Photography Sundays | 11:00 am -12:00 pm

Learn how to create amazing, professional looking
photographs with your phone OR digital camera with
Stuart Meckler. See flyer for details.
In Person only.

2/12 & 2/26

BLANKET BOOSTERS SUNDAYS | 1:00 PM



Volunteer crochet and knitting club!
All blankets created are donated to children in crisis.
Click to join <https://zoom.us/j/92408568672>



2/16

Lunch & Learn Thursday | 12:00 pm

Enjoy lunch and learn with Wendy Rozov on the topic
of How do you relate to God?
\$8 per person for lunch.
Email wrozov@bethelphoenix.com to register.

2/26

Chai Tea Women's Study Group Sundays | 12:30 pm



There are many Jewish spiritual practices that allow
us to open ourselves to find the holy in our lives.
Hybrid learning sessions. In-person at Beth El.
Click to join <https://zoom.us/j/948321834>



A. Nitzan Stein Kokin
Rabbi

Dear Chaverim,

Every winter I am awaiting the renewal of nature. I love going on hikes around this time of year, observing how the rocky landscape puts on an almost velvet-like soft green cover. Our neighbor's front yard across the street faces south and just this past weekend the marigolds opened up into a carpet of sunbathing bright yellow

and orange flowers. A true delight. Even though it is still chilly outside, we can feel the renewal of life that the Tu B'Shevat Seder speaks about. I'd like to share with you today a short exploration of the building blocks of the original mystical seder, that translated the reawakening of nature to the journey of our own inner awakening.

The Kabbalists under the leadership of R. Yitzchak Luria created a multi-sensory seder to reenact and internalize this renewal within our personal lives. Each step is connected with the way we live in and experience the world: the practical, emotional, intellectual, and spiritual worlds we inhabit.

"The Jewish mystics believed that when we unify these levels inside ourselves, we make a special connection between God and the physical world."

R. David Seidenberg, neohasid.org

"The Kabbalists created the seder of Tu B'Shevat as a "tikkun" - a ritual of repair. By eating fruits and nuts with special mindfulness, we strive to repair our own spiritual brokenness and the brokenness of the world which is not yet as we and God most wish it to be."

Rachel Barenblatt, Seder Tu B'Shevat

There are four stages in this repair process in which we elevate ourselves to a higher level of awareness or being. We go through each of these levels by eating symbolic foods, often fruit, and drinking four glasses of wine.

1. Olam HaAsiyah - The World of Action is the physical, tangible world we live in. We eat fruit that has a protective shell, like nuts or pomegranates, or citrus. The shell conceals and protects. In the busy rush of school, work, and everyday activities, our spiritual selves sometimes need that protection and nurturing.

At this stage, we might ask for healing in our bodies and for the repair of environmental damage. But we might also ask ourselves: What barriers have I created that hold me back or separate me from my highest self?

2. Olam HaYetzirah - This is the World of Emotion, Transformation, and Innovation. We eat fruits with a pit, like olives, dates, and avocado. We celebrate creative power. It is associated with spring, the first sunbathing, and symbolizes that we no longer need the protective cover. Life is restored and we pray that our years may open to the feelings and needs of ourselves and others. We might also contemplate: What are the hard places inside myself that prevent me from opening up to life's energetic flow?

3. Olam HaBriyah - The World of Creation, Intellect, and Contemplation. We eat completely edible fruit like figs, berries, and grapes. We relinquish our outer shells and inner hardness so that we may soar to new levels of connectedness and insight.

R. Barenblatt writes in her Haggadah for Tu B'Shevat: The Rabbis asked, "Why were the words of Torah compared to the fig tree?" They answered, "Since all the figs do not ripen at the same time, the more one searches the tree, the more figs one finds in it." So it is with the worlds of the Torah - the more we study them, the more sweet morsels we find.

We might also explore: When do I feel completely connected and open?

4. Olam Ha'Atzilut - The World of Essence, Spirit, and Divine Emanation. We do not eat any fruit, since the spirit world cannot be represented by any concrete edible food. This is a world that is hidden. We enjoy the fragrance of good-smelling substances like cinnamon, rosemary, and cedar. At this level, we become aware of love, mercy, and wisdom that can only be perceived with our hearts, not our senses. Like an inner fire or light. We affirm that what seems like creation is actually divine essence. And we might contemplate: Can I feel holiness within and all around me?

Please join my family and me this year at our Tu B'Shevat seder in our home on Sunday, February 5, at 6:30 pm. RSVP by Wednesday, February 1, directly to me at rabbi@bethelphoenix.com, so we can get a head count, be sure to have enough supplies, and give you directions to our home!

L'Shalom,
Rabbi Nitzan Stein Kokin



Audrey Wolff
President

Dear Friends,

L'Dor va'dor. From generation to generation: Judaism commands us to pass down our values and traditions to connect the next generation to ones that came before. It is integral to who we are as a people, a community, a synagogue, and a culture. This hit home to me in a very personal way when I celebrated the 90th birthdays of my parents in

New York City, with my older brother and sister, our spouses, and children last month. In total, we were 19 coming from Phoenix, Israel, and Washington, D.C. We all crammed into my parent's apartment and found room to eat, connect, and celebrate my parents' 90 years of life and 68 years of marriage.



L'Dor va'dor.

One of the more meaningful moments of the weekend was hearing my parents share memories of our family history. My father's story began way before he was born. He wanted his grandchildren to know about our family's physical and spiritual journey to a better place. In the late 1800s, my great-grandfather and his family made a several months journey in a covered wagon from Tsarist Russia to Palestine, primarily to avoid conscription in the Tsar's army. My family saw Palestine as a home and place for religious freedom.

My mother meanwhile talked about growing up in Gary, Indiana during the Depression and being part of a very small Jewish community. She shared a poignant memory of taking a bus ride to North Carolina to go to a Young Judea camp in the 1940s. There, she recalled being visibly confronted for the first time with the realities of racial segregation:

signs over motels and water fountains saying, "whites only" and "coloreds only." This experience shaped her commitment to instilling in her children the values of social justice and tikkun olam. L'dor, va'dor.

I recognize that we all have our own stories of how we came to be here, in the United States, Phoenix, and Beth El. So how do we continue these spiritual journeys across the generations here at Beth El? At a joyous occasion, we gather. Or, when a family is suffering, we take the time to visit, to listen, and to learn. But let's not wait for an occasion.

At our Beth El daily minyan, people share meaningful memories and connections with those who have been part of our community. Later this month you can join our preschool's fundraiser, our musical Kabbalat Shabbat in the Round and dinner, bake Hamentashen, and take new educational classes.

On Yom Kippur, the Berrett Family stood on the bimah and displayed our children's seder plates and hanukkahs made in our preschool and Talmud Torah and stressed how we, as a Beth El community, "made this." Sharing and being together at Beth El is what makes us a family, so come and continue the traditions. L'Dor va'dor.

Membership Committee Update



Beth El hosted the first meeting of its brand new post-college Chavurah. Mimosas and bagels were had by all. The group played two truths and a lie and planned their next events for February and March. Everyone was excited to meet new peers and make new friends.



Alicia Moskowitz
Executive Director

Dear Friends,

This month, I want to highlight a special group at Beth El that you may not know about: The Welcome Center Volunteers

These volunteers join us each week on Thursdays in our dairy kitchen to cook meals for people seeking asylum in our community through The Welcome Center.

Our Social Action Committee and members of the committee help support the group by providing groceries and/or funds to purchase the groceries needed to cook these meals. Our committee also helped to instruct the group on learning the kashrut standards (along with Rabbi Stein Kokin of course) we keep in our kitchen.

Here is a special message I received from them recently:
We had a huge day this past Thursday! We had 11 of our 12 caring and happy volunteers in the kitchen and we made a ton of food! We made more than we've ever made in one day - and we had more volunteers than we've had in one day. We made the new Applesauce Cinnamon Raisin Muffin recipe with the applesauce gifted by Beth El (thank you, Barbara). Kat helped upsize the applesauce recipe and this week we made 10 dozen of those muffins. We also made 15 dozen cinnamon raisin muffins plus 13 dozen corn muffins. We made 68 mac salads and 4 dozen eggs. AND, Chef Sue was also cooking in the kitchen that day. She is so great to work with. She only takes a tiny little corner of the kitchen. We enjoy her and, from our interactions, I think she enjoys us as well. -- Mary Beth



Please join me in giving a big THANK YOU to the Welcome Center Volunteers. We are so happy to provide a platform for their amazing work!

BETH EL WOMEN'S LEAGUE

I was part of a group of Beth El women who spent time learning about the rituals of the mikveh, touring the beautiful facility at Chabad of AZ, and enjoying a delightful snack. Mikveh Chaya Mushka has been open since 1996 to provide the women in the Greater Phoenix Jewish community with a unique experience based on the laws of family purity. Those of us touring the mikveh for the first time were amazed at how luxurious it was. Thanks to Tzippy Levertov for opening Chabad's doors to our group and talking to us about mikveh and spiritual purity. Rabbi Stein Kokin shared healing prayers to be recited when you visit the mikveh. You can visit the Mayyim Hayyim website at mayyimhayyim.org to find a prayer that suits you.

If it's not already on your calendar, please save the date for Babka, Bagels, and a Book on Sunday, February 19 at 11:30 am at Beth El. Meet author Maggie Anton for a lively discussion, meet and greet, and book signing. She will be discussing The Choice, her latest novel. If you are a fan of Rashi's Daughters, you should definitely plan on joining us. By now, you should have received the email invitation. There is a \$10 couvert for the food and beverages which you can pay online when you register. If you are unable to register online, please contact me at ebloom@bethelphoenix.com, or call my cellphone at (602) 370-4108, and I will put you on the list. You can also pay at the door, but we'd like to know the registration numbers beforehand.

BEWL's Torah Fund Shabbat is scheduled for May 13, 2023. Torah Fund supports scholarships and programs in worldwide Conservative/Masorti institutes of higher Jewish learning. It's the day before Mother's Day, so we are planning on a very nice oneg following the services. If you are interested in participating in the service that morning, please contact Torah Fund Vice President Jan Freedman at rifreedman@aol.com.

February is the shortest month of the year, but it is loaded with reasons to gather with friends and loved ones to share good food and laughter. Stay home to watch the Super Bowl and avoid the traffic. Celebrate Valentine's Day on the 14th, or Galentine's day on the 13th. President's Day weekend will give you an extra day off so head up to Flagstaff to enjoy the snow. My husband and I will be observing Washington's Birthday (aka our son Andrew's 40th birthday) in Philadelphia. I hope to see many of you at Babka, Bagels, and a Book on the 19th.

Eileen Bloom, BEWL President



Dear Families,

Whether camping season has just ended or it's still in the middle of winter, in most places, it is never too early to start thinking about Jewish summer camp for the young ones in your life.

Jewish summer camps fuse the activities, friendships, and bunk life of traditional camps with Jewish values, role models, and culture. These uniquely immersive experiences provide confidence-building

Nanci Siegel Manson
Talmud Torah Director

opportunities for campers to experience joy and discovery in a group setting.

The following are what I believe to be the top reasons why parents, bubbes, and zaydes across the country send their kids to Jewish camps.

1. Camp friendships last beyond the summer. After the dirty laundry is done, and the camp bags are out away, friendships endure. Camp is one easy entry into a lifelong Jewish community. Many alumni of Jewish camp have found that the friends they make at camp stay with them through college and beyond.
2. Immersive Jewish community. Campers are exposed to adult Jewish role models, Jewish peers, and Jewish friends from all over the country. Campers experience joy in a Jewish community, develop self-confidence in who they are, and forge long-lasting connections.
3. Camp ends but the Jewish community continues. Children who attend Jewish summer camps are more likely to identify as Jewish adults, adopt a Jewish lifestyle, and connect with a Jewish community.
4. Camp helps kids succeed. Camp is all about fun and real-world learning. Campers who return to camp as staff can create opportunities to advance themselves on a professional level. Many of our own campers have returned to camps and found that their experiences as camp counselors have helped them jumpstart their careers, establish their college camp networks, and meet new people.

If you need any assistance in choosing a Jewish summer camp for your kids, please reach out, I'm happy to help in any way I can.

On another note, don't forget to support our Talmud Torah's biggest fundraiser of the year, and buy your Mishloach Manot today. Ordering information and other Purim fun can be found in this edition of the *Echo*.

Until next time...



Shalom,

Thank you to all those who attended our Tu B'Shevat youth programming. I had a blast getting to create fun and meaningful projects with our kiddos.

Also this month, the Membership Committee and I planned and hosted the first meeting of a brand new Young Adult Chavurah. I loved getting to meet and socialize with people in my age range!

Roberta Harmon
Youth Advisor
Engagement
Coordinator

If you missed this meeting, do not worry. We have planned an additional two events in the upcoming months so if you are interested in joining the Young Adult Chavurah, please reach out to me so that I can send you the details.

Currently, I am in the process of planning events for our upcoming holidays of Purim and Pesach and look forward to spending time and celebrating with the Beth El community.

Lastly, I have a big announcement! The other Phoenix area Youth Advisors and I have put together a retreat for Kadima (4th-6th graders). This is the first overnight retreat that is taking place since the start of the pandemic. I will be sending out additional information and event details in the upcoming weeks.

We will be joined by other Kadima chapters from Arizona and Las Vegas. This is a great opportunity you don't want to miss! The retreat will take place from March 17 - 19 so please mark those dates in your calendars if you would like your child to attend.

As always, I'm happy to be of service and help the community in any way I can. If there is anything I can assist you with, please reach out to me at rrharmon@bethelphoenix.com.

L'Shalom!



Joanie Charnow
Preschool Director

Dear Families,
The New Year started out well and we hired three new teachers who are integrating into our team. Our Toddler teacher Gladys will be back from medical leave this month. She had a knee replacement. The children in the class really missed her and are excited about her return.

On February 24 our school will have its annual Bike Rodeo.

The children will bring their bikes from home or use some of the school's bikes. There will be a track chalked onto the cement with various stations set up for them to visit. Nora sets this up every year with different exciting booths. There is a bike wash where they have rags to clean the bikes, a garage where they have tools to pretend to fix the bikes, and even a restaurant stop to get their morning snack. It is a fun time for all. We ask parents to sign up to help so the teachers focus on the children. Then after school, we will have Shabbat with PJ Library. Erez Kessler will perform a musical service and Marcy from the PJ Library will provide Purim-themed projects for the children. These PJ Library events are open to all families with young children to give you a chance to meet others and enjoy Jewish-themed activities. Marcy Lewis is the Program Director and runs events valley wide. She will join us for a Yom Ha' Atzmaut event in April as well. Details to come soon!

Save the date for our upcoming fundraiser on March 19 at 10:00 am: the Over the Rainbow Family Fun Run. This year we will start with a "fun run" where our preschool children (and families) are encouraged to get friends, relatives, and even businesses to sponsor their participation. Everyone is welcome to sponsor and/or just watch. After the run/walk, there will be carnival-type activities, food, entertainment, and a silent auction with items for adults and for children. If you would like to donate or help us solicit donations, we would greatly appreciate it as we can use all the items we can get. There are in-kind donation forms located at the preschool office and you can call to request some at (602) 944-2464. Register to attend online at www.bethelphoenix.com/preschool. The money we raise will be used to continue updating our playground!



Connecting to your Board of Directors:

The Beth El Board meets on the 3rd Wednesday of each month at 6:30 pm. These meetings are open to all.

Meeting Minutes are shared on our website at: www.bethelphoenix.com/board-of-directors or are available in our front office.

Interested in being on a committee?
Have a suggestion for a program or class?

Contact:
awolff@bethelphoenix.com

Beth El Gift Shop



Beth El Gift Shop Has Everything Shabbat

We have candlesticks, Shabbat candles, Havdalah sets, Havdalah candles, Kiddish cups, challah covers, challah boards, and more!

Purchase a gift for family or friends or maybe just for you.

Always in stock: kipot, tallit sets, mezuzahs, seder plates, hanukkiah, jewelry, memorial candles

Reasons to shop at Beth El Gift Shop:

- 1 Supports YOUR Beth El
2. No sales tax
3. Unique and unusual items
4. Convenient
5. Custom orders offered for all Judaica

Gift shop now open during
Beth El's office hours

Cantor Search Update



Our cantorial search continues for a year-round cantor. Our committee is meeting regularly and reviewing candidates.

We will update you as we get further along. In the meantime, please feel free to direct any questions to cantorsearch@bethelphoenix.com.

Smachot

Mazal Tov! February Anniversaries

Anniversary Shabbat | 2/25

Date	Names	Years Married
9	Gregory & Susan Harris	38
10	Shimon & Connie Zilversmit	42
12	Neil & Beth Shernoff	45
14	Suzanne & Carl Fuchs	42
17	Aaron & Alicia Moskowitz	15
25	Mark & Phyllis Silberstein	55
25	Curtiss & Wendy Olsen	27



MAZEL TOV



Mazal tov to the Silver and Zubkoff families on the marriage of Rikki Silver and Adam Zubkoff on January 15.

Mazal Tov to Elijah Costales Chevalier and M Constantine Zavos on their upcoming wedding in March!

Tzetzka leShalom and blessings to our member Yochanan Christakis and much success making Aliyah to Israel! We will miss you!

Yom Huledet Sameach! February Birthdays

Birthday Shabbat | 2/11

- 1 Cynthia Faber
- 2 Arlene Loewy
- 3 Shimon Zilversmit
- 4 Charles Meinstein
- 4 Wendy Laskin
- 5 Rona Green
- 5 Janice Freedman
- 8 Lara Serbin
- 8 Aviv Weiss
- 9 Nicole Smedley
- 9 Sharon Cohn
- 10 Jeffrey Hill
- 11 Emily Lhotka
- 12 Kay Abramsohn
- 13 William Wolf
- 15 Sheldon Roth
- 21 Leah Wiesen
- 21 Connie Zilversmit
- 22 Philip Paress
- 22 Alan Finks
- 23 Sanders Switzer
- 23 Morris Stein
- 24 Froma Allen
- 25 Esther Zlochower

HAPPY BIRTHDAY

Thank you for all of your generous contributions!

General Fund

In honor of Nanci, Wendy
Adair, Alicia & Roberta
Wendy Rozov

In Appreciation at End of
Year
Bernice Rozov

In Memory of Janet
Meinstein
Linda & James Fishman

In Memory of Marilyn
Grunbaum
Linda & James Fishman

In Honor of Sue & David
Rosen's 60th Wedding
Anniversary
Patti & Herb Dreiseszun

In Memory of Merle
Greenwald
Stephen Winkelman &

Audrey Wolff
Charleen & Chuck Holt
A Thoughtful Contribution
Jason Klein

In Honor and Appreciation
of the Beth El Staff
Joanna Appelwick

In Memory of Jerry Weiss
Paul Smelkinson
Beth Jo Zeitzer & Adam

Nach
In Memory of Paul & Etta
DuBrow
Ed & Cynthia DuBrow

In memory of Richard
Slavett
Cynthia DuBrow

In Memory of Preston
Mayon
Arlene Mogilefsky

Jerry Katz & Susan
Goldman
Anne Schafer & David

Reid
Sara Ziskin
Barry & Jody Aarons

Steve Mack
Herb & Patti Dreiseszun
Charleen & Chuck Holt

Aaron & Alicia Moskowitz

In Honor of Mark
Silberstein's 80th
Birthday
Roy Gealer

In Memory of Charles
Levine
Paul M. Levine

In Memory of Harvey &
Saralyn Lasner,
Seymour & Sue Lasner,
Rita & Jerry Kinsler,
Sam & Bessie Lasner,
Fannie & Al Stein, Eric
Lasner & Peter Kinsler
Burt Lasner

A Thoughtful Donation
Thomas & Barbara

Wolf
In Memory of H. Mark
Samuel
Debbie & John Wolfe

A Thoughtful Donation
Lisa J. Dietrich
In Memory of Morris
Kaplan
Sheila Davidoff,

Sherri & Laura
Audrey Wolff &
Stephen Winkelman
In Memory of Barney
Kumin
Dorthea Dworkin

Jeannette

Flom Bikkur

Cholim Fund

In Memory of Joan
Sitver
Morton Sitver

Kiddush Fund

In Honor of Their
Anniversary
Dr. Stephen & Mrs.
Marti Nathan

In Honor of their January
Birthdays
Bruce Holzman
Etta Silver
Alicia Moskowitz

In Honor of their 40th
Anniversary
Chuck & Charleen Holt

In Honor of the Anniversary
of Stephen & Marti Nathan
Charlotte Adelman

In Honor of Joan Klein's
Birthday
Charlotte Adelman

In Honor of Nina
Zamoshkin's Birthday
Charlotte Adelman

In Honor of Alicia
Moskowitz's Birthday
Charlotte Adelman

In Honor of their February
Birthdays
Esther Zlochower
Ethan Philo

In Honor of Mikey Ulan's
Bar Mitzvah Anniversary
Paul & Gail Ulan

Merrin Cohen

Fund

On the Yahrzeit of Our
Daughter
Anonymous

Preschool Fund

In Honor of Mark
Silberstein's 80th Birthday
Marji, Don & Pat

In Memory of Jerry Weiss
Paul Smelkinson
In Memory of Preston
Mayon
Jerry Katz & Susan

Goldman

Rabbi Stein Kokin's

Discretionary Fund

In Memory of Jerrold Weiss
Marla Mayer

In Memory of Preston Mayon
The Cooper Family
Audrey Wolff & Stephen

Winkelman
In Memory of Tillie Zaslav
Norman & Anne Zaslav

In Memory of Mollie Friedman
Charles Friedman
On the Occasion of the Zubkoff
Wedding
Rikki & Adam Zubkoff

Social Action Events

A Thoughtful Donation
Morton Sitver

In Memory of Preston Mayon
Benita & Bruce Bowen
In Memory of Morris Kaplan
Jeanne Milstein

In Memory of Preston Mayon
Jeanne Milstein

Trees for Israel

In Memory of Semen Mitavskiy
Igor & Nina Zamoshkin

In Memory of Preston Mayon
Charlotte Adelman
In Memory of Revekka
Olyanskaya
Igor & Nina Zamoshkin

Tzedakah Fund

In Memory of Leslie L. Miller
Sheldon & Eva Miller
In Honor of David Kushner
Eli Kaminsky & Selina

Kaminsky
In Memory of Carl Berkey
Barry & Melanie Becker

In Memory of Willbert Feinstein
Seema Liston

Tzedakah Fund (con'd)

In Memory of Anne Lichtstern

Seema Liston

In Memory of Motarm Behboodi & Tony

Noorolah

Anonymous

Talmud Torah Fund

In Memory of Morris Kaplan

Sara Ziskin

Sheila Davidoff, Sherri & Laura

Audrey Wolff & Stephen Winkelman

Todd Sepke

Yahrzeit Fund

In Memory of beloved father, Homer John Holt

Chuck & Charleen Holt

In Memory of beloved brother, Thomas H. Holt

Chuck & Charleen Holt

In Memory of Beloved Mother, Eileen Holt

Chuck & Charleen Holt

in Memory of S. Gertrude Shore

Merle & Edward Shore

In Memory of Wayne Morgan

Nicki Lasky

In Memory of Julius Koppelman

Vicki & Howard Cabot

In Memory of Gertie Blau

Dr. Elliot Blau

In Memory of Henry Katcher

Brenda Schwartz

In Memory of Bernard Boxer

Nick & Phyllis Fotinos

In Memory of Aaron Shore

Merle & Edward Shore

In Memory of Toby Frankel

Barry & Shelly Frankel

In Memory of Ruth Halperin

Barbara Halperin

In Memory of Betty Geiger &

Louis Wernick

Dr. & Mrs. Howard B

Wernick

In Memory of Francine

Apfel

Michael & Barbara Apfel

THANK
YOU

This *Echo* reflects donations received from 12/22 - 1/20.

Donations received after 1/20 will be listed in the next *Echo*.

in
loving
memory

Merle Greenwald

Morris Kaplan

J. Preston Mayon

Betty Jean Rogers

**May God comfort their loved ones among
the mourners of Zion and Jerusalem.**

Other Ways to Support Beth El

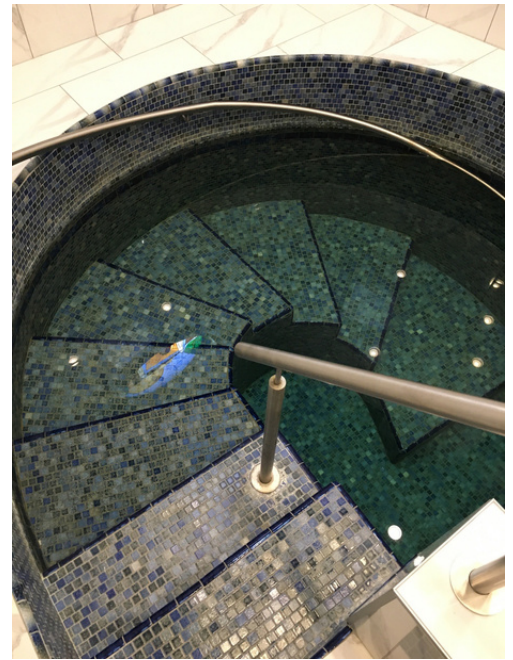
Tree of Life Leaf Plaques | \$180 each

Memorial Plaques | \$360

Jerusalem Wall Plaques | \$1,000+ over dues annually

Life Membership | \$25,000 single, \$50,000 family

BEWL MIKVEH LEARNING EVENT

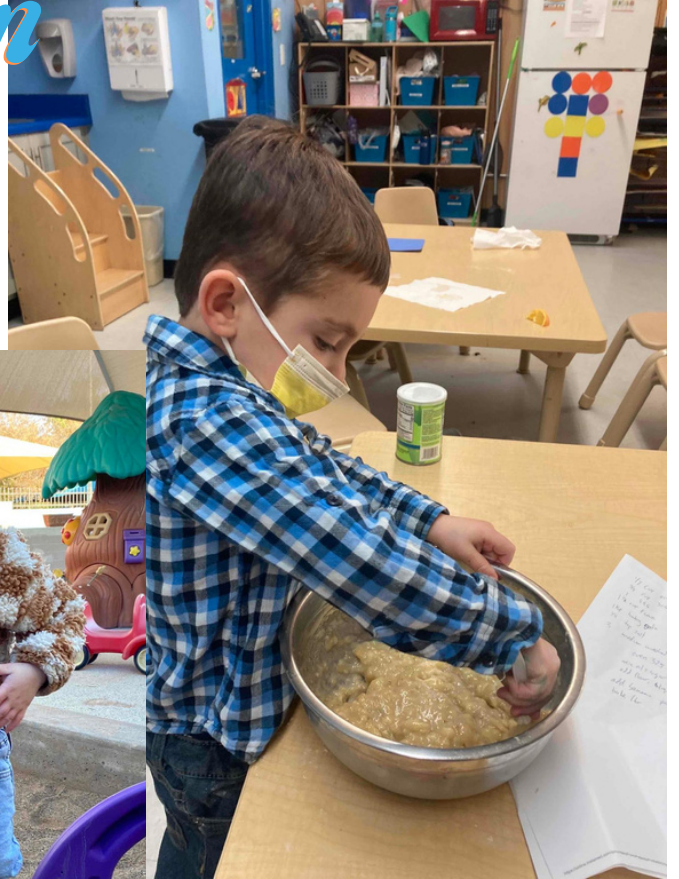


TALMUD TORAH

Frog Day!



Preschool Fun



Connect With Us!

office: (602) 944-3359 | email: info@bethelphoenix.com

.....

Beth El Staff

A. Nitzan Stein Kokin

Rabbi

rabbi@bethelphoenix.com | ext. 108

Alicia Moskowitz

Executive Director

alicia@bethelphoenix.com | ext. 109

Nina Zamoshkin

Controller

nina@bethelphoenix.com | ext. 111

Roberta Harmon

Youth & Community Engagement
Coordinator

rharmon@bethelphoenix.com
ext. 106

Ashton Brown

Administrative Assistant

abrown@bethelphoenix.com | ext. 103

Ben Ulan

Program Assistant

bulan@bethelphoenix.com

Nanci Siegel Manson

Talmud Torah Director

nanci@bethelphoenix.com | ext. 123

Wendy Adair

Talmud Torah Assistant

talmudtorah@bethelphoenix.com
ext. 122

Wendy Rozov

Adult Education Coordinator

wrozov@bethelphoenix.com

Joanie Charnow

Preschool Director

jcharnow@bethelphoenix.com | ext. 129

Rachel Lamb

Preschool Office Manager

preschool@bethelphoenix.com | ext. 126

Executive Committee

Audrey Wolff

President

awolff@bethelphoenix.com
(602) 944-9033

Barry Becker

Treasurer

barrybeckerlaw@gmail.com
(602) 430-1663

Eileen Bloom

Financial VP

ebloom@bethelphoenix.com
(602) 370-4108

Ben Cooper

Ritual VP

bcooper@bethelphoenix.com
(602) 957-1274

Herb Dreiseszun

Facilities VP

(602) 954-0321
(602) 957-3159 (fax)

Charleen Holt

Secretary

cholt@bethelphoenix.com
(602) 695-6462

Kim Mertens

Education VP

kmertens@bethelphoenix.com
(602) 340-8234

Board of Directors

Heather Baker-Mushkatel

Alana Berrett

Joseph (Rich) Cohen

David Goldfarb

Ari Hoffman

Brad Ostrow

José Tafla

Gail Ulan

Danny Witenstein

Sara Zilversmit

Immediate Past President

Greg Harris

Cantor Emeritus

Sam Goldman (z"l)

.....

Other Contacts

Eli Barzilai

Cemetery Administrator

ebarz@msn.com
(602) 309-0763

Mathis Becker

Endowment Committee

becker.mathis@gmail.com
(602) 256-7829

Charleen Holt

Gift Shop Chair

cholt@bethelphoenix.com

Eileen Bloom

Women's League President

ebloom@bethelphoenix.com
(602) 997-1274

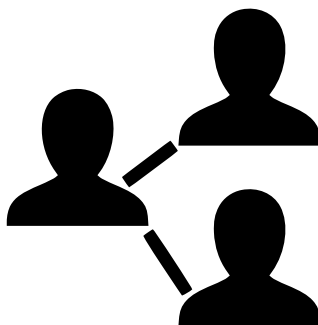
Steve Winkelman

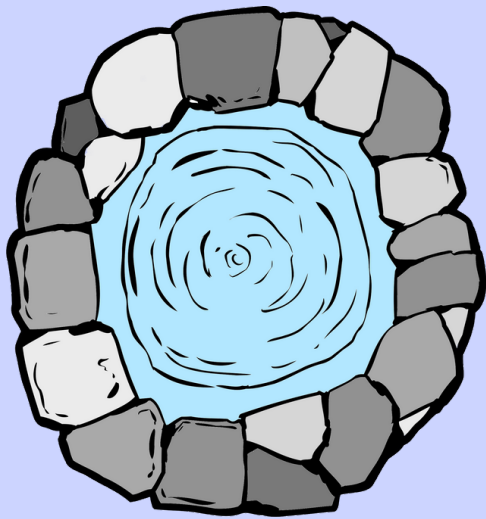
Membership Chair

swinkelman@cox.net

Emily Bogusch

Talmud Torah/Youth Chair





The BE'ER

BE'ER CAFE & PALLIN FAMILY LIBRARY

ENJOY A CUP OF COFFEE OR TEA AND FREE WIFI ANYTIME YOU ARE AT BETH EL!



Many Thanks to our Golden Givers!

LIFE MEMBERS

Herb & Patti Dreiseszun, Bryan Hill & Leah Pallin-Hill,
Sheldon & Ronda Kottle, Bruce (z"l) & Risa Mallin,
Samuel Pallin, Sheldon & Maddy (z"l) Roth,
Paul (z"l) & Maryjane Sandler, Leon & Evelyn Zeitzer,
Dan & Lynda Ziskin

GIBBORIM

Anonymous, Ben & Leslie Cooper,
Louis & Barbara Goldstein, Gary & Lisa Serbin

SHOMRIM

Barry & Jody Aarons, Mathis & Barbara Becker,
Lewis & Barbara Brown, Ed & Cynthia DuBrow, Ellen Goot,
Terry & Rochelle Kelman,
Marvin Siegel & Eileen Bloom, Sara Ziskin

CHAVERIM

Anonymous, Eli & Linda Barzilai, Barry & Melanie Becker,
Barbara Lewkowicz & Geoffrey Gonsker, Greg & Susan Harris,
John & Kim Mertens, Denton Simmons,
Morton & Joan (z"l) Sitver, Paul & Gail Ulan,
The Witenstein Family, John & Deborah Wolfe