



# echo

B E T H   E L   P H O E N I X

May 2023  
Volume No. 5 | Iyyar–Sivan 5783

## CHAG SAMEACH SHAVUOT

MAY 25 – 27



# Services Schedule

## Shabbatot & Yom Tovim



Kabbalat Shabbat on Fridays at 5:45 pm is virtual only on the daily minyan link:

[tinyurl.com/BEC-minyan](https://tinyurl.com/BEC-minyan)

Saturday morning is in-person or streaming at:

[www.facebook.com/bethel.phoenix](https://www.facebook.com/bethel.phoenix)

Saturday evening ZoomDalah, Ma'ariv, and Havdalah are virtual only at:

[tinyurl.com/BEC-minyan](https://tinyurl.com/BEC-minyan)

**Zoomdalah and Ma'ariv/Havdalah will be on summer break starting May 27 and resuming on August 19.**

**If you have a Yahrzeit starting Saturday night please consider joining the Minyan on Sunday morning or afternoon to say Kaddish.**

### 5/6 Shabbat Emor

9:30 am | Shacharit  
1:00 pm | Beer HaTorah  
7:15 pm | Zoomdalah  
7:45 pm | Ma'ariv & Havdalah

### 5/13 Shabbat Behar-Bechukotai

#### BEWL/Torah Fund Shabbat | Birthday Shabbat

9:30 am | Shacharit  
1:00 pm | Beer HaTorah  
7:15 pm | Zoomdalah  
7:45 pm | Ma'ariv & Havdalah

### 5/20 Shabbat Bamidbar

#### Mevarachim Chodesh

9:30 am | Shacharit with Cantorial Soloist Jessi Grossman-Giordano  
10:15 am | Meditation with Wendy Rozov  
1:00 pm | Be'er HaTorah  
7:15 pm | Zoomdalah  
7:45 pm | Ma'ariv & Havdalah

### 5/25: Erev Shavuot

#### No Evening Minyan

7:00 pm – 12:00 am | **Beth El joins the Community Tikkun Leil Shavuot**  
at Congregation Beth Israel: 10460 N. 56th St., Paradise Valley | Register to attend:  
<https://tinyurl.com/5cfkmxku>

### 5/26: Shavuot Day | Yom Tov Collaboration

9:00 am | Shavuot Morning Services - Temple Beth Sholom at 3400 N. Dobson Rd., Chandler, 85224 or online at [www.tbsev.org/services/live-stream](https://www.tbsev.org/services/live-stream)  
5:45 pm | Kabbalat Shabbat (BE zoom only)

### 5/27: Shabbat Shavuot Day 2 | Anniversary Shabbat Aufruf of Roberta Harmon and Seth Freed

9:30 am | Shabbat Shavuot Morning  
Services with Cantorial Soloist Jessi  
Grossman-Giordano  
1:00 pm | Be'er Hatorah

## Rosh Chodesh Sivan

begins with at Motza'ei Shabbat, 5/20

**Sunday 5/21**

**8:00 am | Shacharit (Hybrid)**

## Daily Community Minyan

ALL Daily Community Minyanim are on Zoom with a few hybrid meetings throughout the week for Torah readings. Hybrid = In Person and on Zoom. Join the virtual minyan at:

[tinyurl.com/BEC-minyan](https://tinyurl.com/BEC-minyan)

### Sunday & National Holidays

8:15 am and 5:45 pm  
(Memorial Day 5/29 zoom only)

### Monday

7:15 am (Hybrid) and 5:45 pm

### Tuesday

7:15 am and 5:45 pm

### Wednesday

7:15 am and 5:45

### Thursday

7:15 am (Hybrid) and 5:45 pm

### Friday

7:15 am and 5:45 pm

## Shabbat & Yom Tov

### Candlelighting

5/5 | 6:56 pm  
5/12 | 7:01 pm  
5/19 | 7:06 pm  
5/25 | 7:11 pm  
5/26 | 7:11 pm

### Havdalah

5/6 | 7:55 pm  
5/13 | 8:01 pm  
5/20 | 8:07 pm  
5/27 | 8:13 pm

# May

5/4, 5/11, 5/18 & 5/25



## THE WORLD OF TALMUD THURSDAYS | 8:00 AM

Learn Talmud with Rabbi Stein Kokin  
Email [rabbi@bethelphoenix.com](mailto:rabbi@bethelphoenix.com) to register  
and receive source sheets  
Click to join <https://zoom.us/j/92408568672>

## Lifelong Learning @ Beth El

Register at [bethelphoenix.com](http://bethelphoenix.com)  
or call (602) 944-3359

5/6, 5/13, 5/20, & 5/27

## BE'ER HATORAH SATURDAYS | 1:00 PM

Shabbat Torah Study with  
Rabbi Stein Kokin  
In person following  
Kiddush on Shabbat



5/24



## BOOK GROUP WEDNESDAY | 6:45 PM

Love reading? Love schmoozing?  
Join us as we discuss the book of the month.  
See enclosed flyer for the book title.  
Click to join <https://tinyurl.com/bec-adult-ed1>

5/21



## Ta Shma: Tallit Workshop Sunday | 12:30 pm – 2:00 pm

Work on assembling your Tallit and tzitzit.  
See flyer for details.  
In Person only.

5/14 & 5/28

## BLANKET BOOSTERS SUNDAYS | 1:00 PM



Volunteer crochet and knitting club!  
All blankets created are donated to children in crisis.  
Click to join <https://zoom.us/j/92408568672>

5/18



## Lunch & Learn Thursday | 12:00 pm

Enjoy lunch and learn with Wendy Rozov on the topic  
How do you relate to God?  
\$8 per person for lunch.  
Email [wrozov@bethelphoenix.com](mailto:wrozov@bethelphoenix.com) to register.

5/21

## Chai Tea Women's Study Group Sundays | 1:00 pm



There are many Jewish spiritual practices that allow  
us to open ourselves to find the holy in our lives.  
Hybrid learning sessions. In-person at Beth El.  
Click to join <https://zoom.us/j/948321834>



Dear Chaverim,

As the modern state of Israel marks its 75th birthday we celebrate it with very mixed feelings.

In the last few weeks people have asked me, "Rabbi, what about Israel?" This is a hard question to answer these days. We watch the news emerging daily from our Jewish homeland, and we worry as we see the chaos

R. Nitzan Stein Kokin and pain of the people living in Israel torn apart across political, religious, and existential questions. We are concerned about the future and how Israel as a state and as a society will emerge from this painful conflict on all fronts.

To try to formulate any satisfying answer in a short *Echo* article seems impossible to me. So instead, I want to share some of my personal thoughts that help me reflect and remain strong despite the deep frustration and actual depression that so many here and in Israel currently feel. Further down, I also will share some podcasts and readings that help me understand and process the daily news from the Middle East.

75 years of modern Jewish sovereignty in the promised land is a lifetime - and yet, for a democracy, it's quite a young age. Concerned about the judicial reforms and conflict between the current government and the Supreme Court, I heard a comment on the radio (unfortunately, I don't recall who said this), that gave me a new perspective: While we justifiably worry very much about Israel's democratic future, we at the same time witness a whole society engaged deeply in the democratic process. The people are on the streets raising their voices, letting those in power know where the limits are for them. The people's demonstrations and the dialogue initiated by the president are all functions and expressions of a functioning democracy.

The birth of modern Israel was a miracle. Who would have thought that In the aftermath of the chaos of WWII, after a nearly 2,000-year hiatus of Jewish sovereignty, not only did a modern state come into being, but it also managed to bring in Jewish ethnicities and cultures from all over the world and revived a language that survived only in writing since 70 C.E. without any native speakers? This thought helps me remain resilient.

Israel is unique. Not only in the above-mentioned accomplishment but also from a much deeper perspective:

Taking a close look at its values and its foundations, Rabbi Avital Hochstein introduces a new framework for our discussion in her essay "Sanctity and Land." Based on the book of Leviticus, she explores what the concept of **kedushah** - sanctity - means in the context of building a modern society: *"In other words: if holiness is uniqueness, then life in the State of Israel is actually an opportunity to wonder what makes a democratic and Jewish state unique. These questions stem from an understanding that kedushah is not about hiding away in obscure sacred texts; it is about taking responsibility over life and reality, it is about engaging the unique ways our Torah takes shape in a real political moment with diverse, different, and unique people who currently live in the land. [...] It demands a heightened awareness of being in a unique place, one that requires us to define and maintain its distinctiveness. Lastly, it means being present in a place that has the potential to be sacred if and when we can all gather in it together. How do we design a public space and a set of laws and values that allow such a broad and substantial togetherness?"*

There is much at stake in current Israel, and there is much to be created, mended, and redesigned. I think it is crucial to look at all that is going on with an attitude of how we can uplift and transform ourselves as Jewish people into a more sacred society. This helps me to put all into a much broader perspective which allows me to breath deep.

As we say in Pirkei Avot 2:21: *"Lo alecha ham'lacha ligmor, v'lo ata ben chorin l'hibatail mimena - It is not your duty to complete the work, not up to you to finish it. But neither are you free to desist from it."* We need to stay close, even with our fears and our frustration. For us living abroad, it means we cannot let go, even if we disagree.

While this is truly not anywhere near a satisfying answer and is merely a beginning of a conversation, I would like to share some of the sources that give me quality background information on an ongoing basis and help me to follow what is going on in Israel and educate myself in a more nuanced way. If you haven't done so, I recommend that you explore some of these.

The Shalom Hartman Institute:

Podcasts "For Heaven's Sake" & "Identity/Crisis"

Times of Israel

Podcasts: "Daily Briefing" and "What Matters Now"

Historical background "Israel Story"

Am Israel Chai! LeShalom,  
Rabbi Nitzan Stein Kokin



Audrey Wolff  
President

## May Connections Dear Friends,

As May begins, there is much to celebrate both as part of the larger Jewish community and here at Beth El: the 75th Anniversary of the State of Israel, Shavuot, our end-of-year Kabbalat Shabbat dinner honoring an inspiring cohort of graduating high school seniors who grew up at Beth El, and our Annual

Meeting and Elections. All of these events are a time to reflect, honor, and embrace our Jewish heritage.

Currently, we are in between Pesach and Shavuot. Each night we count the Omer, distancing ourselves from the legacy of Egyptian slavery and moving towards receiving and accepting the Ten Commandments and our commitment to live as a Jewish people. It is especially meaningful this year in that we recognize the 75th anniversary of the state of Israel. Despite the challenges, tension, and messiness of the Middle East, we continue to prevail.

While Beth El's annual elections are not on par with Shavuot and Israel Independence, we nonetheless celebrate coming together to cast our votes for synagogue leadership and continuing the 90-plus-year legacy of our Phoenix Jewish community. I hope that I can count on all of you to join us on **Sunday, May 7 at 9:30 am** for our annual meeting, a light nosh, and a chance to connect with one another.

I also want to extend my heartfelt gratitude and thanks to the three board members, Rich Cohen, Ben Cooper, and Heather Baker-Mushkatel, who will be leaving the board, as their term has come to an end. All three juggled extremely demanding day jobs to volunteer their time and love to Beth El. This is by no means goodbye, as it now leaves them more time to engage in other Beth El activities. We still need their input and participation, just as we need yours. Only together can we move forward and realize our vision statement:

*Beth El is a vibrant and inclusive center of Jewish life in the Valley where we gather as friends and family to celebrate our heritage and identity through tikkun olam; spiritual, cultural, and intellectual growth; traditional and innovative prayer; and lifelong learning.*

This vision is our roadmap for Beth El's future: Engaging with one another and forming relationships; inspiring ourselves to learn together, and to care, pray and celebrate with one another; and thrive as Jews in today's modern world.

We impart this vision to our graduating seniors as they embark on their next stage of life and continue to explore and develop their Jewish identity. We hope to see you on Friday, May 5, at 5:45 pm for our Kabbalat Shabbat in the Round Service and Dinner and on May 7 at our Annual Meeting.

Let's keep building a future filled with promise, joy, learning, and growth.

## Membership Committee



Good times were had at the  
60's Chavurah on April 2 at  
Beth El's Be'er Cafe!

More activities to come soon.

The committee will soon focus  
on planning some activities for  
the summer and next year,  
including more chavurot and a  
New Member Dinner.



Alicia Moskowitz  
Executive Director

Dear Friends,

As we near the end of the fiscal year at Beth El, we are working on billing for next year's dues, security fee, and building fund. As always, we want to make Beth El accessible to everyone who calls this their spiritual home, so please let me know if you need help financially towards these fees. We are generously supported by anonymous donors who help supplement dues for the past two years.

I also wanted to continue listing the available funds to donate towards at Beth El that I began in March's column. We are grateful for your donations and want to make sure they are used in a way that is pleasing to you!

**Be'er Cafe:** Funds help stock the Be'er with your favorite coffee, tea, and goodies. Also, stay tuned for some new programming coming up this summer and beyond in the Be'er!

**Jeannette Flom Bikkur Cholim Fund:** Make a donation for the speedy recovery of your loved one to support bikkur cholim at Beth El.

**Mitzvah Meal Fund:** Help us get meals to those in need. Mitzvah meals help families who are having a hard time and could use a meal due to medical issues, a loss in the family, and other challenges.

**Pallin Library Fund:** Support the upkeep of the Pallin Family Library. Supplies, books, and more can be purchased to update our library.

**Social Action Fund:** Proceeds directed by our Social Action Committee to projects that they spearhead and to help community partners like the Welcome Center meal crew, AZ Kosher Pantry Passover Food Drive, and AZ Friends of the Homeless.

**Trees for Israel:** Purchase Trees for Israel from the JNF through Beth El! We get a special rate and split the donation with JNF. Trees are \$18 each.

Thanks again for all of your support of Beth El!

Chag Sameach!

## BETH EL WOMEN'S LEAGUE

Here are a few pictures from the Women's Passover Experience on April 10, at Rabbi Stein Kokin's home. The Rabbi led us on an educational journey to learn about a lesser known (at least to some of us) heroine of Passover, Sara bat Asher. Old and new friends shared a lovely meal and a fabulous array of Passover desserts. We are very grateful to Rabbi Stein Kokin for opening her home and sharing her wisdom and warmth with our gathering.

There are two events in May to put on your calendar. BEWL's **Torah Fund Shabbat** is on **May 13 at 9:30 am** at Beth El. We will celebrate the awesome women of Torah Fund by leading many parts of the service and, of course, have an enhanced kiddush. This year the Women's League for Conservative Judaism reached a milestone year - 80 years for the Torah Fund campaign. The \$80 for 80 campaign is in full swing at Beth El. You can drop off a check made out to Torah Fund, or donate online at [jtsa.edu](http://jtsa.edu).

Please join BEWL and all members of Beth El Congregation at the Arizona Kosher Pantry on Sunday, May 21, from 10:00 am - 12:00 pm. We will pack meals for those in need. It's part of the Beth El Day of Service. Parking is available to the south of the Kosher Pantry at Arizona Rentals. Do not park at Esmero Salon - they will have you towed. Water bottles are also being collected at Beth El by the Social Action Committee. Register online at <https://tinyurl.com/AZKosher>.

I hope to see many of you at our events.

Eileen Bloom  
President, BEWL





## Dear Families,



It's hard to believe that the school year is coming to an end and the the summer heat will soon be here.

Summer typically brings the opportunity to travel, relax, spend time with family, and for our kids, summer experiences at camp.

Nanci Siegel Manson  
Talmud Torah Director

Talmud Torah gives our kids the opportunity to not just learn about us as Jewish people, our language, holidays, our homeland and more, but to make and engage in Jewish friendships. Jewish summer camps do the same. Meeting kids from all over the country, and building Jewish friendships to last a lifetime. Every summer being able to return in excitement of "doing it all over again." Praying, singing, camping, hiking, swimming, crafting, and more. For those of you attending camp, make those memories!

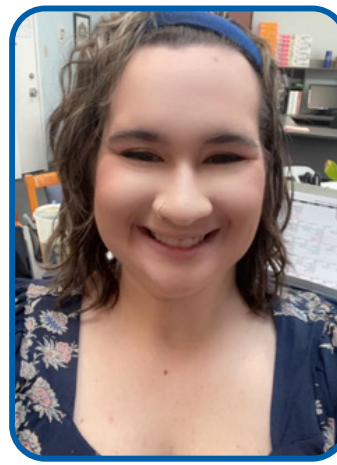
For our graduating seniors, many college campuses provide the same. Jewish clubs, Hillel, sororities and fraternities, and dorm gatherings, all provide opportunities to make new friends while continuing to deepen one's Jewish roots.

Wishing you much luck, opportunity, persistence and success in the years to come.

Lastly, I'd like to leave you with this famous saying, "Do not forget your heart, and follow it until the end." As long as you have dreams, goals, and perseverance, you will achieve an outstanding life.

Don't forget to visit!

Nanci Siegel Manson



## Shalom,

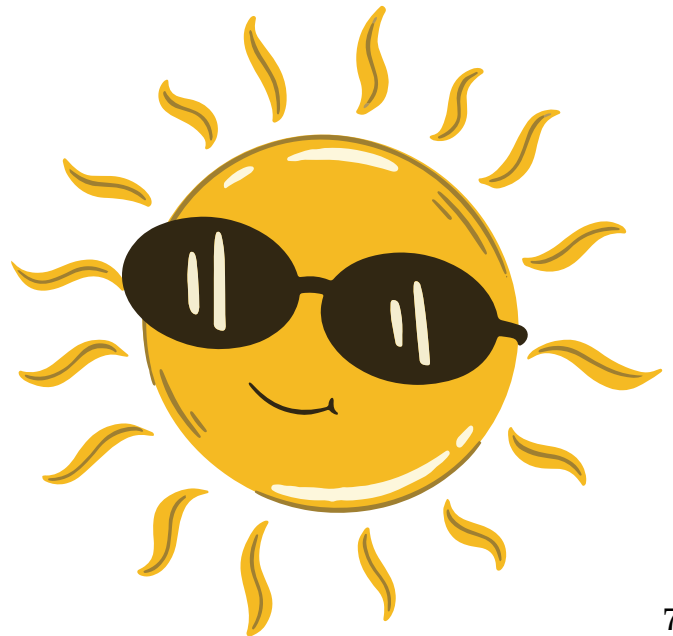
We had a wonderful April filled with fun and enriching youth events. USY got the chance to make fused-glass Mezuzot, while Kadima painted butterfly plates to commemorate Yom HaShoah. Additionally, Talmud Torah students submitted a beautiful art project for the Community Israel 75 Celebration on April 30 at the JCC!

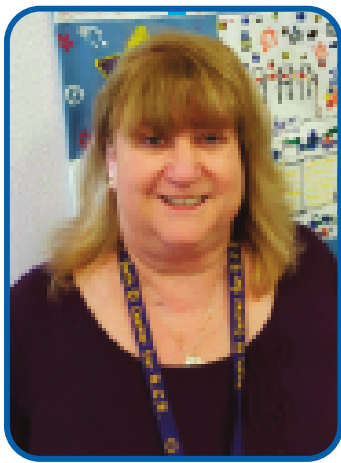
Roberta Harmon  
Youth Advisor  
Engagement  
Coordinator

Although the school year is coming to a close, that does not mean the fun is over. There will be at least one summer event for each age group. Please make sure to look out for more information and details so you can attend!

I wish everyone a wonderful, exciting, and joyful summer. I am looking forward to our last "Kabbalat Shabbat in the Round" of the school year, taking place on May 5. Please make sure to reserve your spot for dinner. Additionally, I'm eager to continue connecting with our youth during summer programming.

Have fun, stay cool, and stay safe. If I don't see you during the summer, I will look forward to connecting in the fall!





Joanie Charnow  
Preschool Director

## Dear Families,

As our school year ends and we get ready for camp, I like to reflect back on all the wonderful things that happened in our school this year.

For Israel's birthday, Yom Ha'atzmaut, the classes made passports. We used thumbprint photos from picture day in October. We found that the children have grown and changed so much that it was hard to recognize them. Some of the children even said, "That's not me!" and would not believe it was really them.

May is the month everyone celebrates Teacher Appreciation. I have noticed there has been a lot of talk about how important teachers are, but I have also noticed that in several places it specifies K-12. However, the most important years of our lives are the first five, because that is where everything begins. Preschool teachers and administrators must be acknowledged as well. Our parents have worked very hard to appreciate our teachers and through our participation in Quality First and being contracted with DES, we have been able to raise our teacher's wages, give bonuses, and give incentive gifts. It is important to feel appreciated when you work in a stressful job, and our teachers here at Beth El are all amazing. If you see a teacher this month, especially the week of May 8 through 13, let them know you appreciate what they do.

Now that enrollment is open to everyone, the classes are filling up fast. A second infant room will be opened by the end of the month, and it is already almost full. The other classes are filling up as well. There will be space in summer camp for two, three, and four-year-olds. We will be creating a circus for the first four weeks and then a school fair during the second session. We will bring in special visitors for both sessions.

If you know anyone who needs a quality preschool for their child, please have them call me at (602) 944-2464.



## Connecting to your Board of Directors:

Committees:

Membership/Outreach  
Social Action/Uniting for Ukraine  
Ritual/Coordinators  
Chesed  
Women's League  
Fundraising  
Education/Youth/Adult  
Security  
Facilities

All ideas and  
time commitments  
are Welcome!

Contact:  
awolff@bethelphoenix.com

## Cantor Update



**Cantorial Soloist Jessi Grossman-Giordano will be leading services on the following days this month:**

**Shabbat, May 20 and 27 at 9:30 am**

## Beth El Gift Shop



### Beth El Gift Shop Has All Your Judaica ESSENTIALS

Always in stock: candlesticks, Shabbat candles, Havdalah sets, Havdalah candles, memorial candles, Kiddish cups, challah covers, challah boards, kipot, mezuzahs and more!

And, of course, we have a fantastic selection of jewelry--perfect for Mother's Day or Graduation Gifts.

Reasons to shop at Beth El Gift Shop:

- 1 Supports YOUR Beth El
2. No sales tax
3. Unique and unusual items
4. Convenient
5. Custom orders offered for all Judaica

Gift shop now open during  
Beth El's office hours

# Smachot

## Mazal Tov! May Anniversaries

### Anniversary Shabbat | 5/27

Date	Names	Years Married
12	Paul & Carol Sacks	32
13	Ethan & Mai Bindelglas	11
15	Wayne & Wendy Laskin	46
16	Harold & Christie Walzer	41
17	Daniel & Julie Witenstein	36
17	Nick & Phyllis Fotinos	42
26	Tracee Rosen & Keren Goldberg	21
27	Mathis & Barbara Becker	36
27	Craig & Martha Rozen	44
28	Allyn & Bonnie Kluger	45
28	Barry & Jody Aarons	17
28	Joseph & Jerilyn Portnoy	57
29	Robert & Debbi Goldich	46



## Yom Huledet Sameach! May Birthdays

### Birthday Shabbat | 5/13

1	GiGi Brzycki	23	Julie Witenstein
3	Susan Finks	23	Lynda Ziskin
4	Charlene Abamsohn	23	Pearl Freeman
6	Sheldon Kottle	23	Amanda Brooks
7	Lorraine Shwer	26	Susan Weiner
7	Paul Ulan	26	Maureen Kist
8	Elaine Hirsch	27	Deborah Wolfe
9	Sarah Goldstein	29	Brian Alpert
10	Leslie Feldman	29	Susan Cohen
10	Keren Goldberg	29	Elliot Gould
11	Peter Rez	30	Carl Fuchs
15	Rebecca Karlin	30	Joan Rothfeld
16	Gilda Harris	31	Fereshteh Ghanooni
16	Bradley Ostrow	31	Debbi Schwartz
17	Jeffery Serbin		
17	Loretta Goldberg		
17	Anita Dale		
20	Marion Weinzwieg		
20	Laura Nicholson		



*MAZEL TOV*

To Ben Cooper on his oral argument in the United States Supreme Court on March 22, 2023 in the Jack Daniel's Properties, Inc. v. VIP Products case.

To the Maheri family on the baby naming of their youngest daughter, Sylvie Lily.

# Thank you for all of your generous contributions!

## General Fund

In memory of Molly Siegel  
*Marvin Siegel & Eileen Bloom*  
In memory of Nestor Roos  
*Robert Roos*  
In memory of Rose Gordon  
*Shirley Grossman*  
In memory of Morris Liebing  
*Joseph Gelb*  
In memory of Sarah Cohen  
*Reba & Allen Rothman*  
In memory of Laura Konick  
*Elliott Konick*  
In memory of Gloria Stein  
*Mo Stein*  
In appreciation of Rabbi Stein Kokin  
*Stephen Shobin*  
In appreciation of receiving an  
aliyah on Shabbat  
*Arnold G. Hoffman*  
In honor of the birth of Eliam Rosen  
*Deborah & Michael Shapiro*  
In honor of Charlotte Adelman's  
birthday  
*Audrey Wolff*  
In memory of Michael Harmon  
*Lorraine Harmon*  
In memory of Michael Harmon  
*Roberta Harmon*  
In memory of Sam Jalowiec  
*Phillip & Cheryl Jalowiec*  
In memory of her parents  
*Carol Bell*  
In Memory of Dr. Steven A.  
Moskowitz  
*Aaron & Alicia Moskowitz*

## Kiddush Fund

In honor of their wedding  
anniversary  
*Daniel & Lynda Ziskin*  
In honor of their birthdays  
*Richard Sinovoi*  
*Edith Wade*  
*Charleen Holt*

This *Echo* reflects donations received  
from 3/21 - 4/21. Donations received  
after 4/21 will be listed in the next  
*Echo*.

In honor of Barbara  
Holzman's birthday  
*Anonymous*  
A generous donation  
*Russ Albert*  
In honor of Ellen Goot's  
birthday  
*Charlotte Adelman*  
In honor of Cheryl & David  
Rosen's birthdays  
*Charlotte Adelman*  
In memory of Jack  
Winkelman  
*Jeanne Milstein*  
In Memory of Henry Bennett  
& Faye Fryd  
*Judith Zola*

## Rabbi Stein Kokin's Discretionary Fund

To thank Rabbi Stein Kokin for  
officiating at their granddaughter's  
naming ceremony  
*Scott & Sharon Steingard*  
For the speedy recovery of  
Rosemary Isaac  
*Marcia Newman*  
In memory of Sandy Shuch  
*Marcia Newman & Family*

## Talmud Torah Fund

On the occasion of the birth of  
Eliam Lawrence Rosen  
*Steve & Marti Nathan*

## Tzedakah Fund

In memory of Aziz Ghanooni  
*The Behboodi Family*  
In memory of Robert S. Waldman,  
M.D.  
*Naomi Waldman*  
In memory of William Fihn  
*Diana Fihn*  
In memory of Rose Gordon  
*Shirley Grossman*

## Preschool Fund

In memory of Isadore Robbins  
*Barbara & Mathis Becker*

## Sarah Silverman Camp Scholarship

In memory of Fayma Conroy  
*Anonymous*

## Yahrzeit Fund

In memory of Isaak Ulman,  
Jesef Revich,  
Roman, and Valer Revich  
*Mira Revich*  
In memory of Mollie Gerber  
*Gerald Levy*  
In memory of Sylvia Sachs  
*Irwin Battock*  
In memory of Esther Ditchek  
*Christina Ditchek*  
In memory of Ralph Webner  
*Gerald & Caryll Webner*  
In memory of Rose Wise  
*Edie Stoneman*  
In memory of Minnie Fineberg  
*Dr. M. J Fineberg*

## Zendle Fund

In memory of Fanny Zendle  
*Dr. Les Zendle*

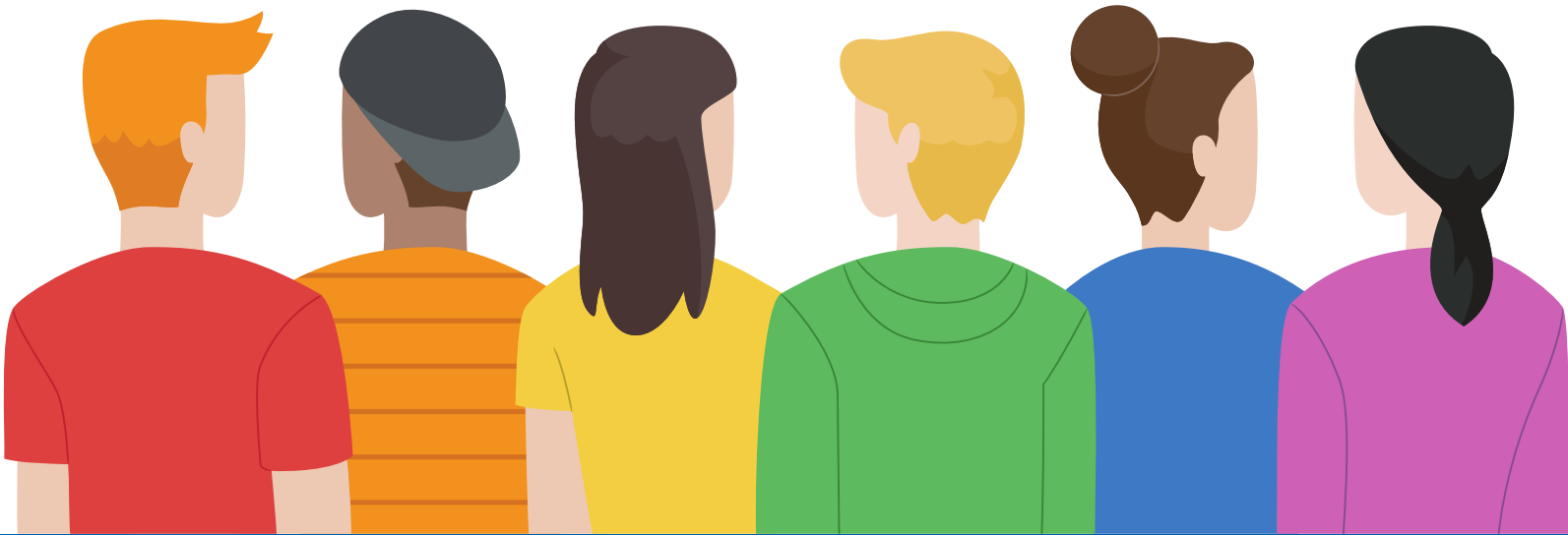
## Yizkor Appeal

In memory of a loved one  
*Charlotte Adelman*

*Thank  
You*

# BETH EL

# YOUTH



## Other Ways to Support Beth El

Tree of Life Leaf Plaques | \$180 each

Memorial Plaques | \$360

Jerusalem Wall Plaques | \$1,000+ over dues annually

Life Membership | \$25,000 single, \$50,000 family



**Talmud Torah students  
art project for the  
Community Israel 75  
Celebration at the JCC**

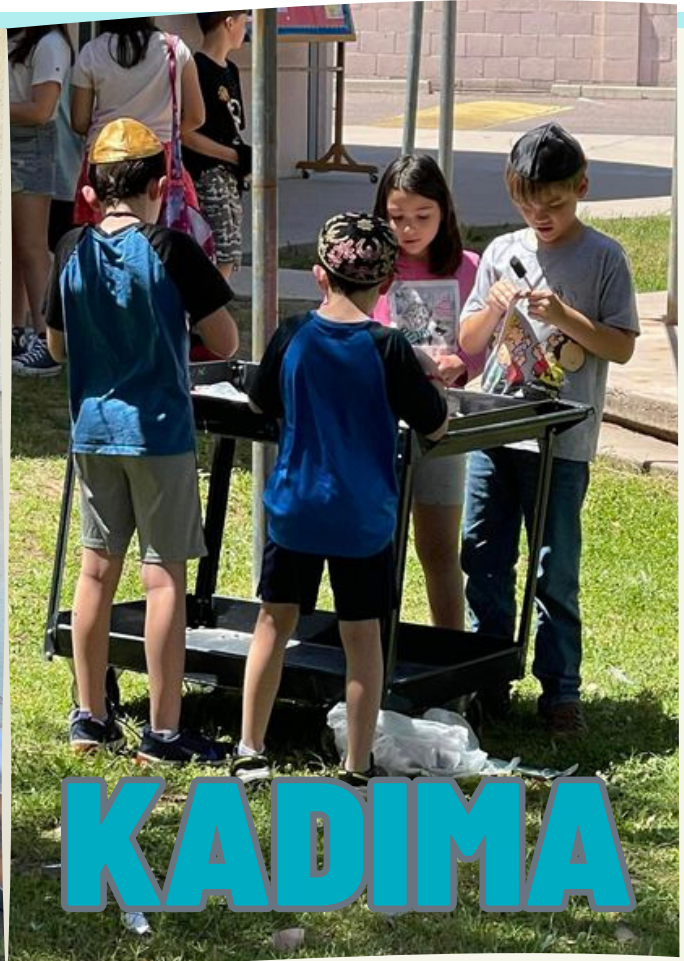
**Ms. Gusdorff's class  
made a birthday cake  
for Israel!**



**BOGRIM**



**KADIMA**





**Women's Passover Experience at Rabbi Stein Kokin's home.**



**The Rabbi Slurps Spaghetti event at Pardes Jewish Day School**

# Connect With Us!

**office: (602) 944-3359 | email: [info@bethelphoenix.com](mailto:info@bethelphoenix.com)**

.....

## Beth El Staff

**A. Nitzan Stein Kokin**

Rabbi

[rabbi@bethelphoenix.com](mailto:rabbi@bethelphoenix.com) | ext. 108

**Alicia Moskowitz**

Executive Director

[alicia@bethelphoenix.com](mailto:alicia@bethelphoenix.com) | ext. 109

**Nina Zamoshkin**

Controller

[nina@bethelphoenix.com](mailto:nina@bethelphoenix.com) | ext. 111

**Roberta Harmon**

Youth & Community Engagement  
Coordinator

[rharmon@bethelphoenix.com](mailto:rharmon@bethelphoenix.com)  
ext. 106

**Ashton Brown**

Administrative Assistant

[abrown@bethelphoenix.com](mailto:abrown@bethelphoenix.com) | ext. 103

**Ben Ulan**

Program Assistant

[bulan@bethelphoenix.com](mailto:bulan@bethelphoenix.com)

**Nanci Siegel Manson**

Talmud Torah Director

[nanci@bethelphoenix.com](mailto:nanci@bethelphoenix.com) | ext. 123

**Wendy Adair**

Talmud Torah Assistant

[talmudtorah@bethelphoenix.com](mailto:talmudtorah@bethelphoenix.com)  
ext. 122

**Wendy Rozov**

Adult Education Coordinator

[wrozov@bethelphoenix.com](mailto:wrozov@bethelphoenix.com)

**Joanie Charnow**

Preschool Director

[jcharnow@bethelphoenix.com](mailto:jcharnow@bethelphoenix.com) | ext. 129

**Rachel Lamb**

Preschool Office Manager

[preschool@bethelphoenix.com](mailto:preschool@bethelphoenix.com) | ext. 126

## Executive Committee

**Audrey Wolff**

President

[awolff@bethelphoenix.com](mailto:awolff@bethelphoenix.com)  
(602) 944-9033

**Barry Becker**

Treasurer

[barrybeckerlaw@gmail.com](mailto:barrybeckerlaw@gmail.com)  
(602) 430-1663

**Eileen Bloom**

Financial VP

[ebloom@bethelphoenix.com](mailto:ebloom@bethelphoenix.com)  
(602) 370-4108

**Ben Cooper**

Ritual VP

[bcooper@bethelphoenix.com](mailto:bcooper@bethelphoenix.com)  
(602) 957-1274

**Herb Dreiseszun**

Facilities VP

(602) 954-0321  
(602) 957-3159 (fax)

**Charleen Holt**

Secretary

[cholt@bethelphoenix.com](mailto:cholt@bethelphoenix.com)  
(602) 695-6462

**Kim Mertens**

Education VP

[kmertens@bethelphoenix.com](mailto:kmertens@bethelphoenix.com)  
(602) 340-8234

## Board of Directors

Heather Baker-Mushkatel

Alana Berrett

Joseph (Rich) Cohen

David Goldfarb

Ari Hoffman

Brad Ostrow

José Tafla

Gail Ulan

Danny Witenstein

Sara Zilversmit

Immediate Past President

Greg Harris

Cantor Emeritus

Sam Goldman (z"l)

.....

## Other Contacts

**Eli Barzilai**

Cemetery Administrator

[ebarz@msn.com](mailto:ebarz@msn.com)  
(602) 309-0763

**Mathis Becker**

Endowment Committee

[becker.mathis@gmail.com](mailto:becker.mathis@gmail.com)  
(602) 256-7829

**Charleen Holt**

Gift Shop Chair

[cholt@bethelphoenix.com](mailto:cholt@bethelphoenix.com)

**Eileen Bloom**

Women's League President

[ebloom@bethelphoenix.com](mailto:ebloom@bethelphoenix.com)  
(602) 997-1274

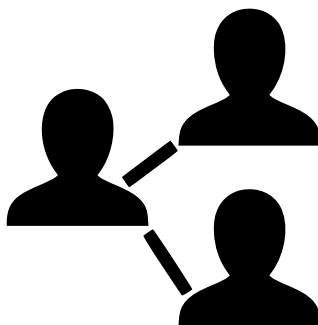
**Steve Winkelman**

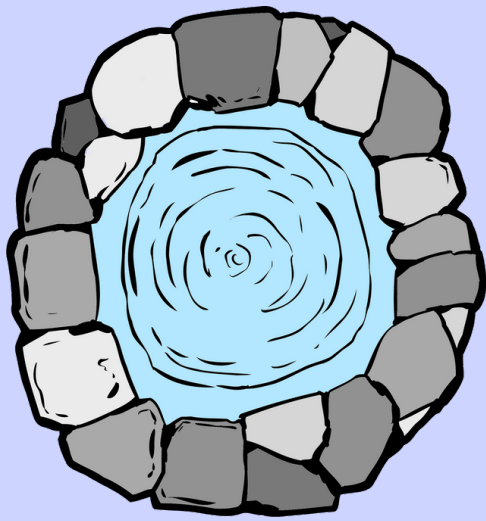
Membership Chair

[swinkelman@cox.net](mailto:swinkelman@cox.net)

**Emily Bogusch**

Talmud Torah/Youth Chair





# The BE'ER

**BE'ER CAFE & PALLIN FAMILY LIBRARY**

**ENJOY A CUP OF COFFEE OR TEA AND FREE WIFI ANYTIME YOU ARE AT BETH EL!**



## *Many Thanks to our Golden Givers!*

### **LIFE MEMBERS**

Herb & Patti Dreiseszun, Bryan Hill & Leah Pallin-Hill,  
Sheldon & Ronda Kottle, Bruce (z"l) & Risa Mallin,  
Samuel Pallin, Sheldon & Maddy (z"l) Roth,  
Paul (z"l) & Maryjane Sandler, Leon & Evelyn Zeitzer,  
Dan & Lynda Ziskin

### **GIBBORIM**

Anonymous, Ben & Leslie Cooper,  
Louis & Barbara Goldstein, Gary & Lisa Serbin

### **SHOMRIM**

Barry & Jody Aarons, Mathis & Barbara Becker,  
Lewis & Barbara Brown, Ed & Cynthia DuBrow, Ellen Goot,  
Terry & Rochelle Kelman,  
Marvin Siegel & Eileen Bloom, Sara Ziskin

### **CHAVERIM**

Anonymous, Eli & Linda Barzilai, Barry & Melanie Becker,  
Barbara Lewkowitz & Geoffrey Gonsker, Greg & Susan Harris,  
John & Kim Mertens, Denton Simmons,  
Morton & Joan (z"l) Sitver, Paul & Gail Ulan,  
The Witenstein Family, John & Deborah Wolfe