

Beth LOL



Special Purim Edition!

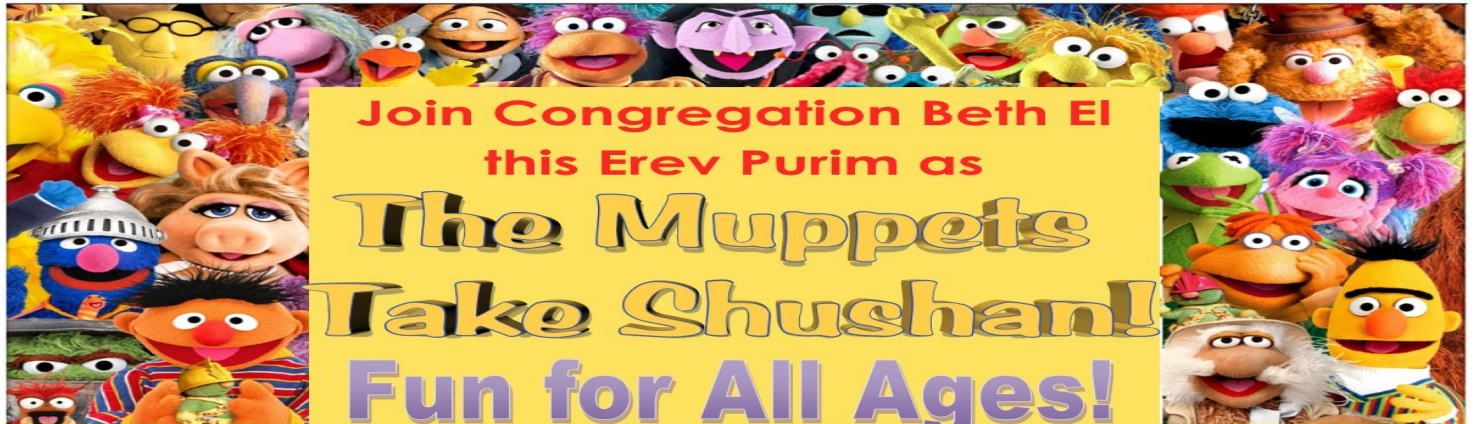
The Bi-Monthly Publication of Congregation Beth El of Bucks County

March/April 2020

Adar/Nisan//Iyar 5780



I am Count ben Count and I am counting on you to be counted at our Purim Celebration! Grover, Elmo and Cookie Monster and more will all be here to be counted with you!



Join Congregation Beth El
this Erev Purim as

**The Muppets
Take Shushan!
Fun for All Ages!**

Monday, March 9, 2020

5:45pm - Learning Siyyum with Rabbi Weiss

6:15pm - Pasta Dinner & Ice Cream Bar

7:00pm - Full Megillah Reading

with Music-Sensational, Muppetational Fun!

Special Prizes for those dressed in costumes!

Purim dinner registration

Name: _____ Cell # _____

of Adults (\$15/adult): _____ # of children 3-13 years old (\$10/child): _____ Household maximum=\$50 _____

Mail check payable to: Congregation Beth El 375 Stony Hill Road Yardley, PA 19067

Visit www.bethelyardely.org to register online/PayPal

Co-President's Message.....	3
Rabbi's Message.....	4
Who's Who on the Board.....	5
Education & Youth.....	6
Synagogue-wide Challah Bake.....	7
Rabbi's Beth LOL.....	8 - 10
Passover 2020.....	11 - 13
Beth El in Pictures.....	14 - 15
Hazak.....	16
Membership Committee.....	17
Social Action Opportunities.....	18 - 19
The Schwarz-Kurz-Zeller Adult Education Institute.....	20 - 22
The Men's Club.....	23

The Women of Beth El.....	23
Mah Jongg.....	24
Ping Pong.....	25
Shabbat Happenings.....	26 - 30
Beth El Community Cares.....	31
Siddur & Mahzor Book Donations.....	32
PTO Book Donations.....	33
Calendars.....	34 - 35
Installation Sponsors.....	36 - 39
Advertisements.....	39
Donations.....	40 - 42
Beth El Gift Opportunities.....	43

Executive Committee Members 2019 - 2020

Laurence H. Schachter.....	Co-President....	president@bethelyardley.org
Elizabeth Ravitch.....	Co-President....	president@bethelyardley.org
Brian Levey.....	1st Vice President	
Beth Sadoff.....	2nd Vice President	
Lee Kirsh.....	3rd Vice President	
Gretchen Merchiere.....	Vice President of Religious School	
Steve Young.....	Secretary	
Steve Lubin.....	Treasurer	
Charlotte Denenberg.....	Hazak President	
Rich Oring.....	Men's Club Co-President	
Rick Albuck.....	Men's Club Co-President	
Michelle Flash.....	Women of Beth El Co-President	
Debbie Lubin.....	Women of Beth El Co-President	

Email Executive Committee Members
executivecommittee@bethelyardley.org



We have one for minyan.
We need 9 more.

Schedule of Services

Monday - Thursday

Morning Minyan 7:00am

Evening Minyan 7:30pm

Friday Evening Services

6:00pm

Saturday Morning Services

9:30am

Sunday Morning Minyan

8:00am

Check out our website

www.bethelyardley.org



Office Hours

Monday - Thursday

8:30am - 4:30pm

Friday

8:30am - 2:00pm

May/June Shofar Deadline

April 14

mi she'beirakh list reset dates

(The list of our loved ones in need of healing)

January 1, April 1, July 1, and October 1

The list will be cleared and compiled anew to reflect current changes.

Please be sure to call the office, 215-493-1707 x4, or email

barbara@bethelyardley.org, prior to the reset dates.

Shop at AmazonSmile

and Amazon will make a donation to:

Congregation Beth El

Simply Go to:

<https://smile.amazon.com/ch/>

23-1538398



Shalom,

Another spring is upon us. I remember back to the fall when I did so much to prepare for the winter – I checked my snowblower, filled up the salt bucket, and tested my generator. With what has been the mildest winter in recent memory, we can now anticipate the warmth of summer with our backs intact and our shovels safely tucked away. There is an old Yiddish proverb, “We plan, God laughs.” Similarly the 18th century Scottish poet Robert Burns wrote, “The best laid schemes of mice and men often go awry.” Both of these quotes refer to our efforts at being prepared while understanding that things may change in a moment.

We continue to prepare throughout our lives - for the weather, for school, for b’nei mitzvot and weddings. But our plans can fall off the path that we have created, and when that happens it is important for us to have our community to rely on to get our lives back on track. It could be an unexpected blizzard, a bad grade on an exam, or losing power on the day of your bat mitzvah; but our community will come together to clear a driveway, help someone study for a class, or find a generator and candles to keep the party going. That is what makes our community a mishpacha, or family.

Beth El is planning many exciting events, including Schmooze and Shmear on select Sunday mornings, Shiru IAdonai instrumental Shabbat Services on Friday nights followed by a potluck dinner, and events sponsored by Women of Beth El, Men’s Club, Hazak, and our Social Action Committee. And don’t forget Capitol Steps coming up in the fall, just in time for the national elections. If you are interested in helping to plan or attend any of these events, please let me or the office know and we will be happy to get you involved with the right people.

The 1979 World Series Champion Pittsburgh Pirates used the song by Sister Sledge, “We are Family” as their theme song throughout the season. The players actually treated each other like brothers. Every day the manager would present the lineup that he felt had the best chance of winning; if one of the players had a bad day, someone else was there to pick him up. Their sense of family gave them the assurance that they would be prepared to do what was needed to win. The power of family and community can help us stay on our best path. It takes everyone to prepare and then make our events successful. I look forward to seeing you all at Beth El this spring.

Happy Purim and Zissen Pesach.



Laurence Schachter
Co-President
president@bethelyardley.org

SAVE THE DATE
SUNDAY, OCTOBER 25, 2020



Shalom Friends,

Rabbi Akiva said: "Keep your words of Torah short. Because no one really wants to hear a long sermon." Fine, R. Akiva never said that. But don't you wish he had? After all, it seems some rabbis and scholars think it is a mitzvah to drone on and on, while the community wishes they would just wrap it up and move on to the kiddush.

This reminds me of a story: During a long dragged out speech by the community rabbi, a congregant fell asleep and began to snore loudly. The rabbi called out to the congregant sitting next to the snorer and said: "Wake him up!" to which the congregant replied, "You put him to sleep, *you* wake him up!"

There is often a considerable gap between what self-perceived leaders offer and what their supposed followers want. And sometimes, when confronted with a seemingly formidable challenge, it is easy simply to turn away and not act. But sometimes that is impossible.

The story of the upcoming holiday of Purim perfectly illustrates the imperative for action during a time of crisis. The plot of the Book of Esther highlights the idea of human agency and responsibility for determining the course of history. In a place and time when Jews must have felt quite unprotected and vulnerable, they were called upon to act swiftly and decisively in order to ensure their very survival.

The verses that best encapsulate this imperative for action are in the fourth chapter of the Megillah, when Mordechai enjoins Esther to approach the king on behalf of the Jews. Sensing Esther's hesitation, he says, "Do not imagine to yourself that you will escape in the king's house from among all the Jews. For if you remain silent at this time, relief and rescue will arise for the Jews from elsewhere, and you and your father's household will perish; and who knows: perhaps you have attained to royal position for just such a crisis." We are living in a period of great crises – environmental, geopolitical, economic, and social. We would do well to take heed of Mordechai's call in our own times, knowing that if we do not use our privileged positions to step up as leaders, urging others to speak up and act, if we do not take it upon ourselves to represent our own communal voices and interests, we may very well fall in the dust on the wayside of history. On this point, our sages remind us that we cannot rely on miracles (cf. Babylonian Talmud Megilla 7b and Pesachim 64b). We cannot outsource our redemption. Each of us must seize the moment and not just *join* the effort, but do what we can to *lead* the effort...even if that means speaking when others might prefer us to remain silent.

In the spirit of ownership of our future, I encourage all of us to consider voting in the ongoing WZO World Zionist Congress elections. These elections take place once every five years. WZC is a powerful body that directly affects the distribution of nearly \$1,000,000,000 in annual funding. This money, which flows through a group of organizations called, collectively, The "National Institutions" (The World Zionist Organization, The Jewish Agency for Israel, World JNF, and the United Israel Appeal) has a major impact on the lives of Israelis of all religions and backgrounds. Since 1897, every single Jew worldwide has had the opportunity to affect Israeli political and economic policy by voting in the World Zionist Congress elections.

In order to safeguard Jewish diversity, it is crucial we secure representation by voting for Mercaz (#6), the Zionist arm of the Conservative movement. The WZC elections run from January 21 to March 11. You can vote here:
<https://www.zionistelection.org/election/2a3b7a80-ba00-42ec-957e-c0375167a065>

Now is a perfect time to make your voice heard.

Wishing you a happy Purim and a liberating Passover,



Ken Kaissar, Board Member & Membership Committee Chair



Ken Kaissar has been a member at Beth El since 2009. He is a professional playwright and theatre director. In June of 2020, he starts his tenure, with his wife Amy, as Co-Producing Director at the Bristol Riverside Theatre. Ken's plays have been performed or developed by the Philadelphia Theatre Company, Delaware Theatre Company, Phoenix Theatre Company, Fusion Theatre Company, Urban Stages and Passage Theatre. His play LOOKING THROUGH GLASS was performed this past May at the Jewish Repertory Theatre of Western New York. His play A LEG UP will premiere at the Bristol Riverside Theatre in May of 2020. His play THE VICTIMS OR WHAT DO YOU WANT ME TO DO ABOUT IT (published by McFarland & Company, Inc.) was a runner-up for the 2009 Princess Grace Award and was honored by Middle East America: A National New Plays Initiative, a partnership of Golden Thread Productions, Lark Play Development Center, Silk Road Rising. His adaptation of Geoffrey Chaucer's THE CANTERBURY TALES was commissioned by Columbia University. His other plays include A MODEST SUGGESTION (available on Amazon), FAT MUSLIM GIRLS and NUDE STUDY. He holds a BFA in directing from Carnegie Mellon University and an MFA in playwriting from Columbia University. He also works as an acting coach. For more information, visit "www.theauditionhelper.com."

Seth Goldstein, Board Member



Most people are taken aback when I tell them I've been married for 10+ years and have 2 kids (this is what happens when you're 36 and look like you could still get offered a Kid's Menu). My wife, Dara, and I joined Beth El shortly after we were married in 2009, as we were trying to look for the "right fit" for us in Bucks County. We met in USY and grew up in other local Conservative synagogues, so this was a really important decision for us. With our 2 children – Jordyn (7) and Corey (3), we know we made the right choice.

I grew to love the warmth and community at Beth El. I jumped at the chance to join the Board four years ago and be part of the new Congregant Engagement Initiative committee that formed late last year, with a goal of helping to bring younger families into our Shul.

I am a 4th-Generation Owner of Goldsteins' Rosenberg's Raphael-Sacks Funeral Home. Dara, the kids and I love to travel - ask us about the time we got stuck in Prague for 2 days when Jordyn was 13 months old – and root for our Philly Sports teams. We love the Beth El Community and look forward to continuing to build our lives here.

Derek Cohen, Board Member



My name is Derek Cohen and I have been a member of Beth El since 2009. I have served on the board since 2014 and currently sit on the Galilee Management, Mortgage and Security Committees. My wife, Robin, and I are the proud parents of Julie (a senior at Pennsbury HS) and Sam (5th grade). Both of our children have been participants in the education program at Beth El. In addition, my parents (Herb and Joyce Cohen) and in-laws (Mel and Deanie Yasner) are members of Beth El.

Outside of Beth El, I am a partner in the law firm of Goodwin Procter specializing in white collar criminal defense and investigations. Before entering private practice, I was a federal prosecutor for almost ten years in Philadelphia and Washington, DC (along with an extended assignment in New Orleans). In my free time, I like to golf, see live music, and find great restaurants. I'm also a member of the Krewe of Bacchus and ride on a float each Mardi Gras in New Orleans.

Food Pantry shop & stock & sipping Starbucks



Sunday, March 1st 1-3 PM

Meet at ShopRite of Lawrenceville in Mercer Mall
3373 Brunswick Pike Lawrenceville, NJ.

Teams will purchase Kosher food items to stock the local JFCS food pantry.
Then we will head to Starbucks for an informal discussion on
Tzedakah and some treats. Pick up at the Starbucks across from Shop Rite.

Cost: \$10 Please RSVP & pay online:
<http://bucksyouth.weebly.com/busy>

HELP US HELP OTHER

We have four for
minyán. We need 6 more.



**Congregation
Beth El**



Presenting... mini congo

an educational and fun Shabbat program
for children PreK to 4th Grades

Shabbat Prayers & Songs
Engaging Activities
Story Time
Torah Lessons
Oneg Shabbat



**A SHABBAT CULTURAL ENRICHMENT EXPERIENCE!
UPSTAIRS IN ROOM 209**

10:00 am to 12:00 pm on the following Saturdays
Mar. 21 Apr. 25 May 9

We ask that parents of children PreK - 4th grades
accompany their child(ren) to mini congo.



ESCAPE ROOM

MARCH 15 AT 1 45PM

Solves puzzles, eat ice cream, 100% Fun!

\$15 for member - \$20 for non-members

Drop off at 1:45PM at All In Adventures
Neshaminy Mall Level 1 Near AMC Theaters

Pick-up at 3:45PM at FRIENDLY'S
Neshaminy Mall Level 1 Near Boscov's

Register & Submit Payment Online at:
<http://tinyurl.com/rls3znm>

Chaverim
3rd & 4th Graders



KADIMA
5th, 6th & 7th Graders

The Combined Chapter of:
Adath Israel, Lawrenceville, NJ
Beth El, Yardley, PA
Brothers of Israel, Newtown, PA
Tifereth Israel, Bensalem, PA



**BAR-BAT MITZVAH
UNIVERSITY**



Calling All 5th - 7th
Graders & Parents!
Join us on Saturdays
from 10am-12pm
in the Chapel as we
pray, learn, practice,
study and enjoy!

**Mar. 21
Apr. 25
May 9**

During BMU sessions, we will form a community of learners and teachers as families come together to share the B'nai Mitzvah journey. Each Shabbat we will focus on an important aspect of B'nai Mitzvah in an effort to create a meaningful experience for all. In the 5th - 7th grades, is strongly recommended that B'nai Mitzvah learners attend Shabbat morning service at least once a month in order to become familiar with the service and gain comfort as both a participant and leader. For more information, contact Karen Lewin, Karen@BethElYardley.org or 215-493-1707 x3.



THE GREAT Challah Bake

Wednesday, March 18th
6:45pm-8:45pm

Join Rabbi Weiss as we take the
opportunity for a fun and uplifting evening!
We will learn the traditions and
secrets of the art of making challah.

All Are Welcome!

RSVP to rsvp@BethElYardley.org or call
the synagogue office, 215-493-1707

We have two for minyan.
We need 8 more.



Congregation
Beth El

375 Stony Hill Road • Yardley, PA 19067
215-493-1707 • www.BethElYardley.org



Diving into Davening: Emerging from the Depths with Rabbi Weiss

Shalom Community Members,

Growing up, I remember looking around Shabbat morning services and seeing everyone decked out in their most impressive flippers. I knew our neighbours and friends were serious about their Judaism when I saw the hefty tanks they lugged around the back of the sanctuary as they carefully re-positioned their snorkels. I myself had to adjust my diving mask when I spun around awkwardly to glare at a newcomer getting her feet wet for the first time, coming late into Pesukei d'zimra without appropriate gear. Without even thinking about it, I loudly gargled the opening line of Psalm 130, "From the depths, I have called out to you, G-d."

Imagine my shock upon arriving in Yardley, only to see an entire community gear-lessly plunge into praising and entreating the Divine. When an usher opened the door for me, she gestured at my snorkel and asked if she could "take that for me." When I understood her intention was not to borrow it, but to stash away my gear in the coatroom, I quickly retrieved my equipment and pridefully waddled my way into the sanctuary, carefully lifting each fin as I ascended the bima.

Especially when we recite The Song of the Sea each morning and as we prepare for our Passover seders, we each need to look inside of ourselves and our closets and figure out how we can truly dive in to achieve our people's freedom. Only when we are surrounded by other wetsuit-clad kin can we truly appreciate the meaning of *z'man cheiruteinu*, the time of our liberation. Let's do Passover right this year. The way our ancestors all came over from the Old Country in their wetsuits.

Making waves,

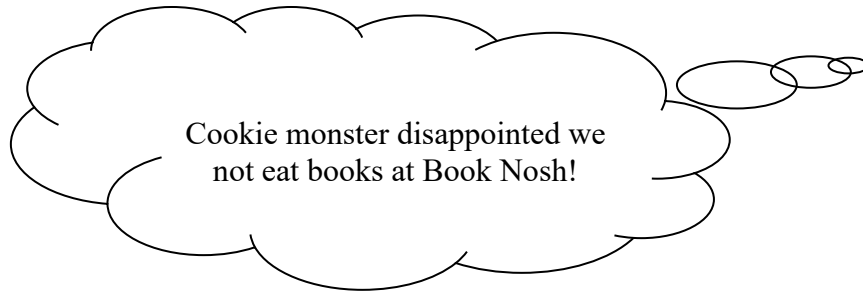


Rabbi Raysh Weiss



Early Spring Programming Round-Up

Well it's hard to believe, but spring is just around the corner here at Beth El. To bring you up to speed with our exciting slate of upcoming programming, here are some selected highlights:



Book Nosh:

This popular recurring program is back in full swing with delectable selections including *Like Water for Chocolate*, *Grapes of Wrath*, *Green Eggs and (fake) Ham*, and the first third of *Eat, Pray, Love*.

Stare Shabbat:

Looking Who's Coming to Friday Night Dinner...and never stop. The goal of this bi-annual communal get-together is to determine who can keep their gaze open and focused the longest on their Shabbat dinner company.

Climate Change:

Beginning March 8. Until then, expect seasonal temps in the low 40's.

Bake for an Enemy:

Time to whip out your oven mitts, flour, festering resentments, and turn up the heat!

Giant Congo

(monthly Shabbat Services for all those between 6 and 8 feet tall)



Bible baBoker b'bongos

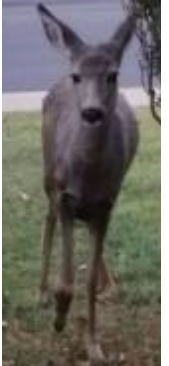
Read up on the portion of the week with Rabbi Weiss each Shabbat before services. If you fall asleep during our study, we'll rouse you from your slumber with bongos.

Tap on Torah

For all those repressed tap virtuosos, this is your monthly moment to shine! Come prepared to respond to Rabbi Weiss' Torah prompts through interpretative tap dance, all while earning miles on TAP Air Portugal.

Beth El Wildlife Spring profiles:

Everyone's favourite limping maternal deer has officially been added to the mi'sheberakh list. For those following along at home, her name is **Adeera bat Ayelet** and her favourite selection from Friday Night Services is Lekha-DOE-di.



Spotted back from hibernation: a **baby rabbit** (name TBD, we're awaiting the bris) of the rabbit family who lives near Beth El has been spotted. He misheard that Beth El was warmly welcoming the new rabbit.

Also sighted: Our resident groundhog, **Punxsutawney Philly Phanatic** reportedly did *not* view his shadow this year. You know what that means: time to gear up for Passover cleaning early this year!

Fox News: Beth El is tightening its security and rounding up additional Shabbat morning ushers after one of the nearby **red foxes** pressed its nose against the main entrance doors a few weeks ago during services. "I was disappointed," admitted a student attending BMU that morning. "I was really hoping we'd once and for all find out what does the fox say."



And here I thought the office would give me **scrap**. Who wants to buy fresh groceries with SCRIP?? Yuck!!



Social Action Committee



Do a Mitzvah for our PASSOVER FOOD DRIVE

MARCH 1 - 22

While shopping for Passover please pick up an extra food item for Congregation Tifereth Israel's Food Pantry. Please be sure it is marked "Kosher for Passover."

Matzah, matzah meal, cake/cookies, gefilte fish, grape juice, etc.

Drop off items at Congregation Beth El in the labeled boxes in the main lobby coat closet.



**Congregation
Beth El**

375 Stony Hill Road • Yardley, PA 19067
215-493-1707 • www.BethElYardley.org

PASSOVER 2020

First Seder Wednesday, April 8

It is time to begin thinking about Pesach. Good preparation is the key to a wonderful Seder and a meaningful Pesach.

Hametz (leaven) – The main ritual observance of Pesach is ridding our homes of all forms of leaven.

- First, all bread products should be removed, either donated to a food pantry, sold, given or thrown away by nightfall on the day before Pesach.
- Second, we do a ritual search for leaven (*bedikat hametz*), this year on the evening of **Tuesday, April 7**, traditionally by candlelight, using a feather and spoon to collect several pieces of specially placed leaven. This is a great ritual for the whole family! We then recite the formula for nullifying any unfound hametz (*bittul hametz*).
- In the event that some products are too expensive to actually be disposed of, they may be sold to a non-Jew for the duration of Pesach. Rabbi Weiss can act as your agent in that transaction if you sign the form in the synagogue or visit www.bethelyardley.org to sign up online **by Wednesday, April 1**.
- **On the morning of the First Seder Night, Wednesday, April 8** we destroy the hametz (*biur hametz*) that we found the night before, usually by burning it, and we again recite the formula for nullifying unfound hametz. The rituals for searching, nullifying and destroying hametz can be found in a good Haggadah or visit www.haggodot.com.

Ta'anit Bekhorim (Fast of the Firstborn)

On the day leading into Seder, all firstborn Jews customarily fast from morning until evening. However, if one takes part in a mitzvah that includes a feast, the fast is cut short. Join Rabbi Weiss on **Wednesday, April 8 at 7:00am morning minyan for some study**.

Ma'ot Hittin

As on every Jewish holiday, it is praiseworthy to give to tzedakah so that others will have enough to eat and, in the case of Pesach, provisions for Seder. One wonderful opportunity for doing so is by contributing to Mazon, a Jewish response to hunger. We have their materials in the synagogue lobby or go to: <http://www.mazon.org>. Please make checks payable to Mazon and mail to: P.O. Box 96116 Washington, D.C. 20090.

Seder

The complex details of Seder are best addressed through a good Haggadah. The Rabbinical Assembly's Feast of Freedom includes a lot of wonderful material, and the Hartman Institute's *A Different Night* is great for kids, but many others are also worth checking out. Remember that the best Seder experience will be one where everyone participates by reading, acting out the story or telling their own stories of personal redemption. There are many online resources to help you enhance your Seder.

We have three for minyan. We need 7 more.



Schedule of Passover Services

Wednesday, April 8 (Erev Pesach - 1st Seder):

Office Closed/Ta'anit Bekhorim (Fast of the First born)

No evening minyan

7:00am Morning Minyan & study with Rabbi Weiss

7:13pm Candle Lighting /No Evening Services

Thursday, April 9 (Pesach I - 2nd Seder):

Office Closed/No evening minyan

9:30am Pesach Services

8:14pm Havdalah

Friday, April 10 (Pesach II):

9:30am Pesach Services

6:00pm Shabbat Evening Services

7:15pm Candle lighting

Saturday, April 11 (Pesach III - Chol Hamoed):

8:45am Bible BaBoker Torah Study with Rabbi Weiss

9:30am Shabbat Morning Services

8:16pm Havdalah

Sunday, April 12 (Pesach IV - Chol Hamoed):

No FJLC

8:00am Morning Minyan

Monday, April 13 (Pesach V - Chol Hamoed):

Office closes at noon

7:00am Morning Minyan

7:30pm Evening Minyan

Tuesday, April 14 (Pesach VI - Chol Hamoed):

Office closes at noon/No Evening Minyan

7:00am Morning Minyan

7:19pm Candle lighting

Wednesday, April 15 (Pesach VII):

Office closed/No Evening Minyan

9:30am Pesach Services

8:20pm Candle lighting

DO A DOUBLE MITZVAH!

DO YOU NEED A PLACE TO GO
FOR A SEDER OR

DO YOU HAVE SPACE AT YOUR SEDER
TABLE FOR A GUEST?

Each year at the Passover Seder we recite the words, "Let all who are hungry, enter and eat, all who are in need, let them come celebrate Pesach."

In order to fulfill this prayer, we are matching those who have open seats at their seder tables with those who are looking for seders.

If you fall in either category, please call the office by Wednesday, April 1st, 215-493-1707 x4 or email barbara@bethelyardley.org.

Passover begins on
Wednesday, April 8.

Thank you in advance to those who host, making it possible for others to fulfill the mitzvah of attending a seder.



M
O
C
K

M
I
T
Z
V
A
H



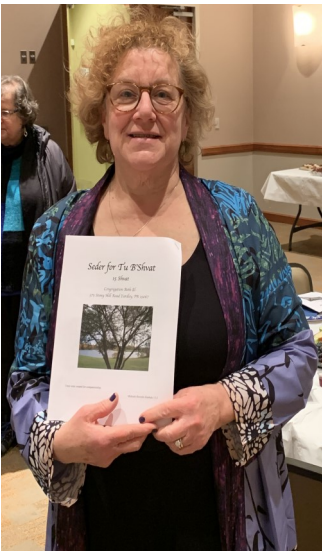
FJLC MITZVAH DAY

Oh what a day of Mitzvah Mania at FJLC this morning! Participants had fun and did amazing work.

- Pre-K to 3rd grades went to Attleboro with Rabbi Raysh Weiss. Children and senior residents focused on Tu B'Shevat with songs, trivia and a great picture frame flower craft.
- 4th-5th grades baked brownies and wrote thank you notes to firefighters at Beth El. Then we brought the treats and cards to the Yardley Makefield Firehouse so we could thank our firefighters for all they do to keep us safe. We had a great tour of the firehouse and even had the opportunity to go in the fire trucks.
- 6th-7th grades visited HomeFront's Family Campus in Ewing, NJ. After learning about HomeFront's mission to help the homeless, participants baked delicious chocolate chip cookies for dessert for the residents' dinner.

Thank you so very much for everyone who participated, to our wonderful faculty for helping to coordinate, and to all the awesome parents who helped with carpools, baking, and crafts! I am so proud of our community!





Tu
B'Shevat
Seder



Bingo



Pita making





(Laugh Out Loud!)

With Comedian Marc Kaye

Sunday, March 15

10:15am Brunch & Program



Marc Kaye has been a regular on the comedy circuit spinning tales of growing up differently, as a member of the only Jewish family in a wealthy Connecticut suburb, navigating fatherhood, marriage...then divorce... strange looks while traveling and even stranger thoughts when not distracted!

Marc has performed in clubs from CT through Washington, DC on the East Coast and nationally, as well, often finding that there are no real regional differences that can't be overcome with humor. He recently appeared at the NJ Preservation 1867 Sanctuary in "Marc Kaye's Comedy Connection." He lives locally!

**Please RSVP for the Marc Kaye Program by March 8. Payment must accompany RSVP.
No RSVPs will be taken after March 8.**

Name _____ Email: _____

Phone #: _____ # Attending: _____

Members: \$15 Non-Members: \$20 For more information contact Charlotte Denenberg, 215-752-3122

Please make check payable to HAZAK of Beth El and mail to:

Marian Berger 46 Sagebrush Lane Langhorne, PA 19047



**Congregation
Beth El**

375 Stony Hill Road • Yardley, PA 19067

215-493-1707 • www.BethElYardley.org



**TIRED OF MATZAH?
NEED BREAD?
WE GOT IT!**



**The Membership Committee
invites you to**

**Sunday
Schmooze &
Schmear**

Sunday, April 19 11:30am

Meet us in the lobby for coffee & bagels.



**Congregation
Beth El**

375 Stony Hill Road • Yardley, PA 19067

215-493-1707 • www.BethElYardley.org



Let's Get Cooking

WITH COOK FOR A FRIEND

TUESDAYS at 5:00pm

March 3 April 1 May 5 June 2

Meet in the Beth El kitchen.

No experience required. Come spend an hour or two and help prepare nutritious, kosher meals for homebound seniors.

**For more information contact: Beth Sadoff at
bjaws999@gmail.com or
215-208-8006**



**Congregation
Beth El**

**375 Stony Hill Road • Yardley, PA 19067
215-493-1707 • www.BethElYardley.org**

CHESED

חסד

Beth El's Chesed Community is here for you!

Each member of Congregation Beth El is a vital part of our caring community. We gladly share in each other's simchas and seek to be supportive of one another when we are experiencing challenges in our lives.



Please let us know if you or someone you know needs assistance. We offer:

- *rides to doctor appointments, Shabbat Services and programs
- *occasional food shopping
- *set up for a Shiva house
- *babysitter referrals
- *meals

We would love to add some more volunteers to our list.

Please call the office to let us know how you can assist us with the Chesed Community.

The possibilities are endless!

For assistance or more information contact:

**Barbara or Marian in the office;
office@bethelyardley.org or
call 215 - 493 - 1707 x4 or
Judy Nussbaum, 215-431-4729.**



**Congregation
Beth El**

**375 Stony Hill Road • Yardley, PA 19067
215-493-1707 • www.BethElYardley.org**

We have 5 for minyan.
We need 5 more.



Spring into learning with these Adult Ed events

March - April

Teachings in Jewish Renewal: Instructor Seth Fishman

A year-round, Chavruta-style text study based on the writings of Reb Zalman. Thursdays, 8:30am - 9:30am.

Dive into Davening (ZOOM Link Class): Instructor, Rabbi Weiss

First Monday of the month; 12:30pm - 1:00pm. Fast-paced, one-prayer-per-session dive into the meaning and significance of the prayers in our service. All levels warmly welcome! Available on Zoom Learning. Check your Friday email for the link.

Shulchan Ivri (Hebrew Table): Instructor, Rabbi Weiss

Improve your conversational Hebrew in this fun, low - key meet-up session. Monthly, last Monday of month from 12:00pm - 1:00pm. Meet at McCaffery's, 2nd floor, 635 Heacock Road. All levels welcome!

Bible BaBoker Torah Study, Saturdays: Instructor, Rabbi Weiss

Join Rabbi Weiss for a traditional Torah Study of the weekly Parashat. 8:45am - 9:25am (before Shabbat Morning Services). No prior knowledge required.

Jewish Women: A Historical Perspective: Instructor, Harriet Freidenreich

Wednesday mornings, 9:30am - 10:45am. (March 4, 11, 18, 25 and April 1) Lecture series on how the historical role of Jewish women changed over time, and helped to shape today's Judaism for ***both men and women***.

It Doesn't Look Jewish with Rabbi Weiss

Wednesday mornings, 11:00am - noon. (March 4, 11, 18, 25 and April 1) Rabbi Weiss will continue her discussion of Jewish culture by exploring different aspects of Jewish visual imagery.

New - Special 3-part Series! Climate Change: Now and in the Future

This series is suitable for adults and teens. Sunday afternoons, 2:00pm - 3:30pm; March 8, 15 & 22. Our instructor and fellow congregant, Sheldon Miller, has taught extensively on Climate Change and currently consults with an NGO working with the United Nations on projects to mitigating the effects of Climate Change. Class is free. Registration requested, visit www.bethelyardley.org or call the office, 215-493-1707 x4.



There are a ton of Adult Learning opportunities coming your way in May/June. Please save these dates on your calendar so you don't miss out. Flyers and sign-up information will be available soon.

Sunday, May 3, 12:45pm - 4:00pm Wellness Day. A variety of half-hour classes, panel discussions and workshops to help improve your (and your family's) physical, mental, and emotional well-being.

Thursday, May 28, evening Tikkun Leil Shavuot. It's traditional to usher in Shavuot with an evening of learning. Our program will feature dinner, a quick Erev Shavuot Service, followed by a menu of interesting and fun short-courses for you to pick and choose from.

Sunday, June 7, 2:00pm - 3:30 pm Book Event. Topic is Alice Hoffman's *The World That We Knew*, which was this year's One Book One Jewish Community selection for Greater Philadelphia, and also was a 2019-20 National Jewish Book Award winner. Program will include a review from member of the One Book Selection Committee, and first-hand account from Ruth Hartz whose personal story helped to inspire Alice Hoffman's book. Light refreshments included. \$10/person (in advance); \$15 (at the door). This event is co-sponsored by Book Nosh, Hazak, and the Schwarz-Kurz-Zeller Adult Education Institute.



3-Session Series on **Climate Change** for *Adults and Teens*

Sunday Afternoons; 2:00pm - 3:30pm

March 8, 2020: Introduction to Climate Change

March 15, 2020: Effects of Climate Change

March 22, 2020: The Way Forward

Instructor: Sheldon Miller

As Associate Professor of Chemistry and Physics at Chestnut Hill College, Sheldon Miller has taught courses relating to Climate Change for 13 years. He currently consults with an NGO working with the United Nations on projects relating to mitigating the effects of Climate Change.

Cost: FREE

Registration requested. Please register at
www.bethelyardley.org or call the synagogue office, 215-493-1707 x4.



375 Stony Hill Road * Yardley, PA 19067

215-493-1707

We have 6 for minyan.
We need 4 more.





Thursday, March 12th

7:30pm minyan at Beth El

8:00pm Torah on Tap at Penny & Lenny Bardfeld's home

- Join The Men's Club, The Women of Beth El & Rabbi Weiss monthly for Torah on Tap
- Original format; Rabbi Weiss will lead the discussion of critical topics in our Jewish lives
- Participation from all is encouraged & welcomed
- All are welcome to attend

RSVP to Lenny Bardfeld at pennyandlenny@comcast.com
Penny and Lenny Bardfeld 1357 Brentwood Road Yardley, PA



**Save the Date
Sunday, March 15**

Join The Men's Club as they assist FJLC students as they learn how to wrap tefillin.

8:00am morning minyan; breakfast
9:15am Rabbi Weiss discussion about the Mitzvah of wrapping tefillin



**Save the Date
Sunday, March 22 9:00am**

**Yom HaShoah Candle Project at Beth El.
More information will follow.**

WoBE invites you to

A Life of My Own: Meeting Eleanor Roosevelt Performed by: Linda Kenyon

This performance is accompanied by our member appreciation brunch to celebrate Women in History



Sunday, March 22, 2020 at 10AM

Come spend an entertaining Sunday with us!

RSVP by 3/12/2020 to

Estelle Blaustein stellib25@gmail.com or (215) 741 - 9897

PLAY, LEARN, OBSERVE

MAH JONGG

&

MIDRASH

Sunday, March 1 and April 5

9:30am - 11:30am

Quick intro session will be provided. Set tiles 9:20

Come join old and new friends for a fun morning of Mah Jongg at Congregation Beth El. Rabbi Weiss will share Midrash (stories) you didn't hear in Hebrew School. No experience needed.

Register to play. \$5 bagels/fruit will be served.

Bring Mah Jongg sets and cards.

Mah Jongg and Midrash. Register to play. Space is limited, reserve now.

Complete the form and mail payment to: Congregation Beth El

Name: _____ Email: _____

Phone #: _____ #member _____ #non-member _____

____ Check enclosed (Make check payable to: Congregation Beth El) _____ March 1 _____ April 5

guests that never played _____ # guests that are beginner _____
#guests that are intermediate _____ #guests that are expert _____



**Congregation
Beth El**

**375 Stony Hill Road • Yardley, PA 19067
215-493-1707 • www.BethElYardley.org**

A vibrant, retro-style poster for a ping pong event. The background is a collage of blue, yellow, and red geometric shapes and patterns. A large red circle in the center contains the event details. A red circle in the top right corner says 'FREE EVENT'. At the bottom, there is a small image of a cartoon vampire character with a speech bubble.

**FREE
EVENT**

JOIN US FOR

PING PONG

Thursday, March 19

6:30pm - 8:30pm

All are welcome to participate

**Hot dogs, veggie burgers, snacks and a
ton of fun!**

Questions? Email Ian Schachter,
bonnians@verizon.net



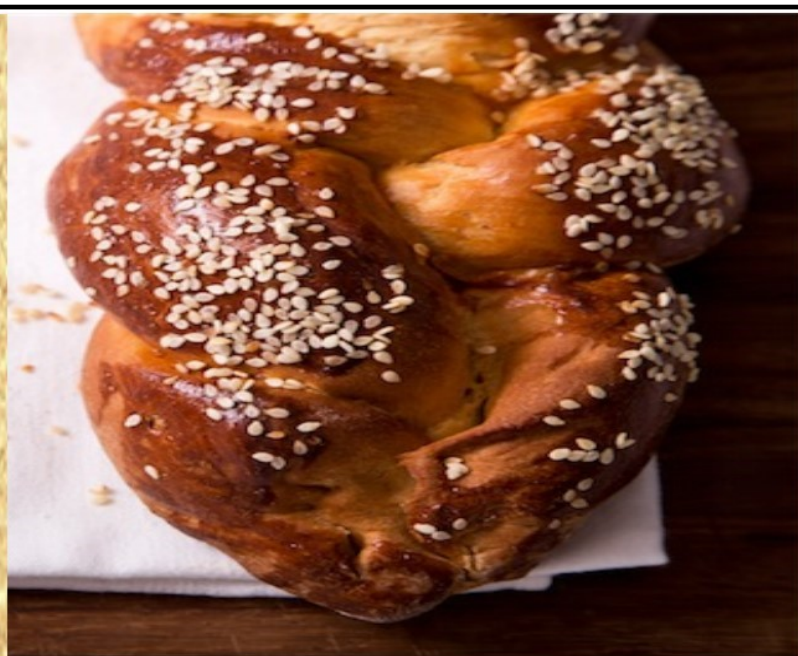
We have 7 for minyan.
We need 3 more.



**Congregation
Beth El**

375 Stony Hill Road • Yardley, PA 19067
215-493-1707 • www.BethElYardley.org

SHARE SHABBAT DINNER



Mark your calendars
March 20, June 5 7:00pm

Share Shabbat Dinners are times when congregants open up their homes to host other Beth El families for a Shabbat dinner.

- ♦ The host family prepares the main entree (vegetarian/dairy dinner) while their guests bring agreed upon accompaniments.
- ♦ The Share Shabbat committee members assign guests to hosts, making an effort to introduce Beth El families/couples to each other. This helps to create a better sense of community for all members.
- ♦ Become a host or come as a guest.

We hope you will join us and be part of this wonderful experience!

RSVP by Sunday, March 8 for March 20 to Susan Strouse 215-355-8999 or email shareshabbatdinner@yahoo.com.



**Congregation
Beth El**

375 Stony Hill Road • Yardley, PA 19067
215-493-1707 • www.BethElYardley.org

Shabbat Lunches

SYNAGOGUE-WIDE SHABBAT LUNCHEONS

Join us for lunch following Shabbat Morning Services

Current, prospective and new members welcome

March 21

April 25

May 16

June 20

(Shabbat of Appreciation)

Sponsor an Oneg

SPONSOR AN ONEG SHABBAT

**In honor of a birthday, anniversary or
any other occasion!**

Each Shabbat we have a list of Oneg and Kiddush sponsors included in our Shabbat Flyer, TV monitor and weekly email. The sponsorship helps to offset the cost of Kosher challah and cakes. The cost is \$18.



To sponsor at Oneg for Shabbat contact
Carol Benderson - Lighter, 215-702-1361

Jill Katz, 215-630-6563



Social Action Committee

בְּאֶרֶץ מִכֶּם יִהְיֶה לָכֶם הַגֵּר | הַגֵּר אִתְּכֶם וְאַהֲבַת לֹא כְמוֹת פִּיגְרִים הֵייתֶם בְּאֶרֶץ מִצְרַיִם אֲנִי יְהוָה אֱלֹהֵיכֶם
 The stranger who resides with you shall be to you as one of your citizens; you shall love him as yourself, for you were strangers in the land of Egypt: I the LORD am your God.

Refugee Shabbat and Congregational Luncheon Saturday, April 25

Save the Date! On April 25, Congregation Beth El will be a proud participant in **HIAS's National Refugee Shabbat**. At services and at a congregational luncheon following services, we will dedicate time to learn more about the plight of refugees and asylum seekers. With more than 70 million people worldwide who have fled their homes due to persecution and violence, we are now witnessing a major humanitarian crisis. We will come together as a community to learn more about this issue and how it relates to our Jewish values. We hope that you will join us for this important event.



**Congregation
 Beth El**

375 Stony Hill Road • Yardley, PA 19067
 215-493-1707 • www.BethElYardley.org

Join Congregation Beth El on
Friday, March 13 at 6:00pm

Shiru I Adonai

a Prayerful, Joyful, Musical,
Moving, Spiritual Kabbalat
Shabbat Experience
in the Rotunda!

POTLUCK VEGETARIAN/DAIRY DINNER
following services. All are welcome to
attend. Please bring a main course,
side dish or salad to serve at least
8 - 10 people to enjoy!

Beth El will provide the dessert!

For more information contact:
Judy Nussbaum 215-431-4729 or
Linda Greenberg 215-321-0503

Musical Director: Marc Finkel

Future Dates:

April 3

May 1

June 12



**Congregation
Beth El**

375 Stony Hill Road • Yardley, PA 19067
215-493-1707 • www.BethElYardley.org

STUDY TORAH WITH US!



**Bible BaBoker Saturdays*

8:45am - 9:25am

Join Rabbi Weiss for a traditional Torah study of the weekly Parsha. No prior Torah knowledge required to participate. All are encouraged to attend.

*Bible BaBoker will not meet on any Saturday there is a B'nai Mitzvah



**Congregation
Beth El**

375 Stony Hill Road • Yardley, PA 19067
215-493-1707 • www.BethElYardley.org

Our Community Mourns the Loss of...

Beverly Bunin, grandmother of Ben (Stephanie) Bunin, great-grandmother of Zachary and Whitney

Esther Ruth Knopfmacher, wife of the late Arthur Knopfmacher, mother of Lewis (Susan) Knopfmacher, Phyllis Day, Joel (Mary) Knopfmacher, Jane Knopfmacher, grandmother of Daniel and Ben Knopfmacher, Amy (Mike) Fisher, Jenny Knopfmacher, Arthur Knopfmacher, great-grandmother of Jacob and Kayla Fisher

Brenda Dessel, Marlene Gordon's sister-in-law

Rachel Goldstein, wife of Carl; mother of Seth (Dara) and Josh (Lauren); sister of Luba (Ahuva) Kellman (Dan) and Isaac Roda (Denise); loving Bobe of Jordyn, Corey, and Brooke.

Mazel Tov to...

Shari and Ben Manis on the birth of their grandchild, Dalton

Cara and Marshal Davis on the birth of their daughter, Alison Ruby

Michelle Flash on the birth of her granddaughter, Alison Ruby Davis

We are looking for few good Minyaneers

Congregation Beth El holds both morning and evening minyan services open to our members and friends in the community. We invite you to join us and become a regular volunteer. Take some time from your busy day or week, come to our chapel and pray with friends and neighbors, and be there to support a person saying kaddish or yahrzeit.

It's a mitzvah...it's good for you and it's good for our community.

Daily Morning Services: Monday - Friday at 7:00am

Daily Evening Services: Monday - Thursday at 7:30pm

Weekly Sunday Morning Services: 8:00am

Count ben Count **loves** being minyan captain. **One** minyanaire, ha ha ha; **TWO** minyanaires, ha ha ha; **THREE** minyanaires...ha ha ha. We have 8 for minyan. We need 2 more. Did I mention there will be scotch?

For more information call the synagogue office, 215-493-1707 x4.

To sign up for evening minyan visit: www.bethelyardley.org, click on the Minyan icon.



סידור
לב שלם
Siddur
Lev Shalem
לשבת ויום טוב
FOR SHABBAT
& FESTIVALS

The Siddur Lev Shalem for Shabbat and Festivals

The Siddur Lev Shalem has all the prayers and psalms with commentary, spiritual reflections and historical background for some of the readings.

מחזור
לב שלם
MAHZOR
LEV SHALEM
ROSH HASHANAH
AND YOM KIPPUR

The Mahzor Lev Shalem for Rosh Hashanah and Yom Kippur

The Mahzor Lev Shalem's running commentary presents both a historical overview and insight into the meaning of prayers. Many readings focus on spiritual issues and tikkun olam, as well as reflections, stories and quotes.

Siddur Lev Shalem/Mahzor Lev Shalem Donation

Please print legibly:

Donor's Name: _____

(How you want your name to appear on the bookplate)

Phone: _____ Email: _____

I wish to donate (check one or all that apply):

_____ #Siddur Lev Shalem X \$54 (each) = _____ **circle one:** Home use or donate to Beth El

_____ #Mahzor Lev Shalem X \$54 (each) = _____ **circle one:** Home use or donate to Beth El

*BOOK PLATE DEDICATION INFORMATION

In memory of (name): _____

In honor of (name/occasion for honor): _____

***Please use a separate piece of paper for additional book plate donations. Mail your check with this form to
Congregation Beth El 375 Stony Hill Road Yardley, PA 19067 ATTN: Siddur/Mahzor**



Do a Mitzvah! Dedicate a Book!

HONOR SOMEONE YOU KNOW BY DONATING A
BOOK TO THE BETH EL LIBRARY THROUGH THE FIERVERKER JEWISH
LEARNING COMMUNITY PTO

Donate a book for any and all occasions. Birthdays, B'nai Mitzvah, anniversaries and more! All money donated to this fund benefits the advancement of Jewish education for our Fierverker Jewish Learning Community, Pre-Kindergarten through 7th grades. In exchange for your donation, a special book plate will be inserted in one of our library books and shared with the community.

Suggested donation \$18

Any support is appreciated as it will go towards
educational programs for PreK to 7th graders.

Personalize your dedication and make a payment
by going to the following link:

<http://www.bethelyardley.org/PTOdonate>



Thank you for your generosity.

SUNDAY MARCH 1

Passover Food Drive Begins until March 22

8:00am Morning Minyan
9:00am FJLC
9:00am Gift Shop Open
9:30am Mah Jongg & Midrash
1:00pm BUSY Shop & Stock

MONDAY MARCH 2

7:00am Morning Minyan
12:30pm Adult Ed - Dive Into Davening (ZOOM link)
2:00pm NAMI Meeting
7:30pm Evening Minyan
7:30pm Executive Committee Meeting

TUESDAY MARCH 3

7:00am Morning Minyan
5:00pm Cook for a Friend
7:30pm Evening Minyan

WEDNESDAY MARCH 4

7:00am Morning Minyan
9:30am Adult Ed - Jewish Women: A Historical Perspective
10:00am Gift Shop Open
11:00am Adult Ed - It Doesn't Look Jewish

4:30pm FJLC (3rd - 7th)
6:45pm HaMoadon Hebrew High

7:30pm Evening Minyan

THURSDAY MARCH 5

7:00am Morning Minyan
8:30am Adult Ed - Teachings in Jewish Renewal
7:30pm Evening Minyan

FRIDAY MARCH 6

7:00am Morning Minyan
10:00am Gift Shop Open
5:39pm Candle Lighting
6:00pm Shabbat Evening Services

SATURDAY MARCH 7

Parashat Tetzavah/Shabbat Zachor

8:45am Bible BaBoker Torah Study
9:30am Shabbat Morning Services
6:40pm Havdalah

SUNDAY MARCH 8

8:00am Morning Minyan
9:00am The Women of Beth El - Pack Shalach Manot
9:00am FJLC (3rd - 7th)
9:00am Gift Shop Open
10:30am FJLC Purim Carnival
2:00pm Climate Change Program

MONDAY MARCH 9

Erev Purim/Ta'anit Esther

7:00am Morning Minyan
2:00pm NAMI Meeting
5:45pm Learning Siyyum with Rabbi Weiss
6:15pm Purim Dinner
7:00pm Full Megillah Reading

TUESDAY MARCH 10

Purim

7:00am Morning Minyan
7:30pm Evening Minyan

WEDNESDAY MARCH 11

Shushan Purim

7:00am Morning Minyan
9:30am Adult Ed - Jewish Women: A Historical Perspective
10:00am Gift Shop Open
11:00am Adult Ed - It Doesn't Look Jewish
4:30pm FJLC (3rd - 7th)

6:30pm Membership Committee Meeting

6:45pm HaMoadon Hebrew High

7:30pm Evening Minyan

THURSDAY MARCH 12

7:00am Morning Minyan
8:30am Adult Ed - Teachings in Jewish Renewal
7:30pm Evening Minyan
8:00pm Torah on Tap at Penny & Lenny Bardfeld's home

FRIDAY MARCH 13

7:00am Morning Minyan
10:00am Gift Shop Open
6:00pm Shabbat Evening Services w/Shiru lAdonai & Potluck Dinner
6:47pm Candle Lighting

SATURDAY MARCH 14

Parashat Ki Tisa/Shabbat Parah

8:45am Bible BaBoker Torah Study
9:30am Shabbat Morning Services including Girl Scout Sabbath
7:48pm Havdalah

SUNDAY MARCH 15

8:00am Morning Minyan/Breakfast hosted by The Men's Club
9:00am FJLC (3rd - 7th)
9:00am Gift Shop Open
9:15am FJLC Board Meeting
9:15am The Men's Club - World Wide Wrap
10:15am Hazak Program
11:00am PTO Board Meeting
1:45pm Kadima & Chaverim - Escape Room
2:00pm Climate Change Program

MONDAY MARCH 16

7:00am Morning Minyan
2:00pm NAMI Meeting
7:30pm Board Meeting
7:30pm Evening Minyan

TUESDAY MARCH 17

7:00am Morning Minyan
7:30pm Evening Minyan
7:30pm Fundraising Committee

WEDNESDAY MARCH 18

7:00am Morning Minyan
9:30am Adult Ed - Jewish Women: A Historical Perspective
10:00am Gift Shop Open
11:00am Adult Ed - It Doesn't Look Jewish
4:30pm FJLC (3rd - 7th)
6:45pm HaMoadon Hebrew High
6:45pm Synagogue-wide Challah Bake
7:30pm Evening Minyan

THURSDAY MARCH 19

7:00am Morning Minyan
8:30am Adult Ed - Teachings in Jewish Renewal
6:30pm Ping Pong Game
7:30pm Evening Minyan

FRIDAY MARCH 20

7:00am Morning Minyan
10:00am Gift Shop Open
6:00pm Shabbat Evening Services
6:54pm Candle Lighting
7:00pm Share Shabbat Dinner - Offsite

SATURDAY MARCH 21

Parashat Vayakhel/Pekudei/Shabbat HaChodesh

8:45am Bible BaBoker Torah Study
9:30am Shabbat Morning Service including Congregational Lunch
10:00am Youth Services
7:55pm Havdalah

SUNDAY MARCH 22

Passover Food Drive Ends

8:00am Morning Minyan
9:00am FJLC (3rd - 7th)
9:00am The Men's Club Yom HaShoah Candles
9:00am Gift Shop Open
10:00am Women of Beth El Membership Appreciation Luncheon
2:00pm Climate Change Series

MONDAY MARCH 23

7:00am Morning Minyan
7:30pm Evening Minyan

TUESDAY MARCH 24

7:00am Morning Minyan
7:30pm Evening Minyan

WEDNESDAY MARCH 25

7:00am Morning Minyan
9:30am Adult Ed - Jewish Women: A Historical Perspective
10:00am Gift Shop Open
11:00am Adult Ed - It Doesn't Look Jewish

4:30pm FJLC (3rd - 7th)
6:45pm HaMoadon Hebrew High

7:30pm Evening Minyan

THURSDAY MARCH 26

Rosh Chodesh Nisan

7:00am Morning Minyan
8:30am Adult Ed - Teachings in Jewish Renewal

7:30pm Evening Minyan

FRIDAY MARCH 27

7:00am Morning Minyan
10:00am Gift Shop Open
6:00pm Shabbat Evening Services
7:01 Candle Lighting

SATURDAY MARCH 28

Parashat Vayikra

8:45am Bible BaBoker Torah Study
9:30am Shabbat Morning Services
8:02pm Havdalah

SUNDAY MARCH 29

8:00am Morning Minyan
9:00am FJLC
9:00am Gift Shop Open
9:15am Congregational Security Training

MONDAY MARCH 30

7:00am Morning Minyan
12:00pm Adult Ed - Shulchan Ivri (Hebrew Meet Up)

7:30pm Evening Minyan

TUESDAY MARCH 31

7:00am Morning Minyan
7:30pm Evening Minyan

WEDNESDAY APRIL 1

Reset mi she'beirakh list

Last day to sell Chametz

7:00am Morning Minyan
9:30am Adult Ed - Jewish Women: A Historical Perspective
10:00am Gift Shop Open
11:00am Adult Ed - It Doesn't Look Jewish
4:30pm FJLC (3rd - 7th)
5:00pm Cook for a Friend
6:30pm Membership Committee Meeting
6:45pm Hebrew High
7:30pm Evening Minyan

THURSDAY APRIL 2

7:00am Morning Minyan
8:30am Teachings in Jewish Renewal
7:30pm Evening Minyan
8:00pm Men's Club & Women of Beth El - Torah on Tap

FRIDAY APRIL 3

7:00am Morning Minyan
10:00am Gift Shop Open
6:00pm Shabbat Evening Services w/ Shiru IAdonai & Pot-luck Dinner
7:08pm Candle Lighting

SATURDAY APRIL 4 Parashat Tzav/Shabbat HaGadol

8:45am Bible BaBoker Torah Study
9:30am Shabbat Morning Services
8:09pm Havdalah

SUNDAY APRIL 5

8:00am Morning Minyan
9:00am FJLC (3rd - 7th)
9:00am Gift Shop Open
9:30am FJLC Passover Program
9:30am Mah Jongg & Midrash

MONDAY APRIL 6

7:00am Morning Minyan
12:30pm Adult Ed - Dive Into Davening
2:00pm NAMI Meeting
7:30pm Evening Minyan
7:30pm Executive Committee Meeting

TUESDAY APRIL 7

Search for Chametz

7:00am Morning Minyan
7:30pm Evening Minyan

WEDNESDAY APRIL 8

Pesach - 1st Seder/Ta'anit Bekorim (Fast of the first born)

Office Closed/Gift Shop Closed
No Evening Minyan/No FJLC or HaMoadon Hebrew High
7:00am Morning Minyan & study with Rabbi Weiss
7:13pm Candle Lighting

THURSDAY APRIL 9 Pesach I - 2nd Seder

Office Closed
No Teachings in Jewish Renewal
No Evening Minyan
9:30am Passover Services
7:00am Morning Minyan
8:14pm Candle Lighting

FRIDAY APRIL 10 Pesach II

Office Closed
Gift Shop Closed
9:30am Pesach Services
6:00pm Shabbat Evening Services
7:15pm Candle Lighting

SATURDAY APRIL 11 Pesach III (CH"M)

8:45am Bible BaBoker Torah Study
9:30am Shabbat Morning Services
8:16pm Havdalah

SUNDAY APRIL 12 Pesach IV (CH"M)

Office Closed
Gift Shop Closed
No FJLC
8:00am Morning Minyan

MONDAY APRIL 13 Pesach V (CH"M)

Office Closes at Noon
7:00am Morning Minyan
7:30pm Evening Minyan

TUESDAY APRIL 14 Pesach VI (CH"M)

Office Closes at Noon
7:00am Morning Minyan
7:30pm Evening Minyan
7:19pm Candle Lighting

WEDNESDAY APRIL 15 Pesach VII (CH"M)

Office Closed
No FJLC or HaMoadon Hebrew High
Gift Shop Closed
9:30am Pesach Service
8:20pm Candle Lighting

THURSDAY APRIL 16 Pesach VIII

Office Closed
No Teaching in Jewish Renewal
No Evening Minyan
9:30am Pesach Services with Yizkor Services
8:21pm Havdalah

FRIDAY APRIL 17

Office Closes at Noon
7:00am Morning Minyan
10:00am Gift Shop Open
6:00pm Shabbat Evening Services
7:23pm Candle Lighting

SATURDAY APRIL 18 Parashat Shmini

9:30am Shabbat Morning Services
8:24pm Havdalah

SUNDAY APRIL 19

8:00am Morning Minyan
9:00am FJLC (3rd - 7th)
9:00am Gift Shop Open
11:30am Schmooze & Schmear

MONDAY APRIL 20

7:00am Morning Minyan
2:00pm NAMI Meeting
6:30pm Fundraising Committee Meeting
7:30pm Board Meeting
7:30pm Evening Minyan

TUESDAY APRIL 21

Yom HaShoah

7:00am Morning Minyan
7:30pm Evening Minyan
Bucks County Kehillah Yom HaShoah Program (TBD)

WEDNESDAY APRIL 22

7:00am Morning Minyan
10:00am Gift Shop Open
4:30pm FJLC (3rd - 7th)
6:45pm Hebrew High
7:00pm Yom HaShoah Program
7:30pm Evening Minyan

THURSDAY APRIL 23

7:00am Morning Minyan
8:30am Adult Ed - Teaching in Jewish Renewal

7:30pm Evening Minyan

FRIDAY APRIL 24

Rosh Chodesh Iyyar

7:00am Morning Minyan
10:00am Gift Shop Open
6:00pm Shabbat Evening Services
7:30pm Candle Lighting

SATURDAY APRIL 25

Parashat Tazria-Metzora/Rosh Chodesh Iyyar

9:30am Shabbat Morning Services with Congregational Luncheon & Social Action Committee - Refugee Shabbat
10:00am Youth Services
8:31pm Havdalah

SUNDAY APRIL 26

8:00am Morning Minyan
9:00am FJLC (3rd - 7th)
9:00am Gift Shop Open
9:15am FJLC Board Meeting
11:00am PTO Board Meeting

MONDAY APRIL 27

7:00am Morning Minyan
12:00pm Shulchan Ivri (Hebrew Meet Up)

7:30pm Evening Minyan

TUESDAY APRIL 28

Yom Hazikaron

7:00am Morning Minyan
7:30pm Evening Minyan

WEDNESDAY APRIL 29

Yom Ha'atzmaut

7:00am Morning Minyan
10:00am Gift Shop Open
4:30pm FJLC (3rd - 7th)
6:45pm Hebrew High
7:30pm Evening Minyan

THURSDAY APRIL 30

7:00am Morning Minyan
8:30am Adult Ed - Teaching in Jewish Renewal
7:30pm Evening Minyan

Thank you for your generous donations.
Show your support and patronize our sponsors.

PLATINUM SPONSORS

We have 9 for minyan.
We need 1 more.



GOLD SPONSORS



TheGoldbergGroup
BUCKS COUNTY REAL ESTATE

Nancy Goldberg, REALTOR®

Cell 215-962-3778, Office 215-504-7500

Relationships Built on Trust, Expertise, and Exemplary Service

**BERKSHIRE
HATHAWAY**
HomeServices

**Fox & Roach,
REALTORS®**



Beth El
Board of Directors

Beth El Men's Club

Rabbi Jonah Rank,
Ariana & Meitel

Rose and Michael
Koretsky

The Schachter Families

HUGHES
PERSONAL TRAINING



PICCIOTTI
Lawn & Landscaping, LLC



Panache Caterers

kw
KELLERWILLIAMS



Kim Picciotti, REALTOR®



Attleboro
Live Well. Everyday.

Alexander
PLUMBING, HEATING & AIR CONDITIONING, INC.

Beth El Office Staff
Beth El Hazak
FJLC & PTO
Judi & Gary Reiss
Tina & Michael Rettig
Women of Beth El

Bronze sponsor for the Installation Weekend



TOO MUCH TO DO???

Janet

WILL HELP YOU GET IT DONE!!!

ORGANIZING
PROJECTS
ERRANDS
PLANNING

Janet Shikoff
call or text
267-231-3047

Shop at AmazonSmile
and Amazon will make a donation
to:

Congregation Beth El
Simply Go to:

[https://smile.amazon.com/ch/
23-1538398](https://smile.amazon.com/ch/23-1538398)



DO YOU SHOP AT SHOPRITE, MCCAFFREY'S or GIANT?

SUPPORT BETH EL

Purchase Grocery Gift Cards in the synagogue office.

CELEBRATE WITH US! AT BETH EL
We can accommodate your needs

Beth El has beautiful rooms that can be rented
for day or evening events. Contact:
Barbara@bethelyardley.org

SEARCHING FOR THE
PROMISED LAND?

LET US LEAD THE WAY!



NADINE SIMANTOV & CO.

PLATINUM AWARD WINNING TEAM

SPECIALIZING IN BUCKS COUNTY AND THE
SURROUNDING AREAS



MOBILE- 215-858-2068
OFFICE- 215-757-6100 x125
NADINESIMANTOV@GMAIL.COM
WWW.NADINESIMANTOV.COM

The Schwarz-Kurz Zeller Adult Education Institute Fund

In Memory of:

Alan Flash

Jill & Steven Katz

Building Fund

In Appreciation of:

Lynn & Ben Lubing's generosity & kindness

Michelle Ginsburg

In Honor of:

Abigail Greenberg's bat mitzvah

Arleen & Bill Barisa

In Memory of:

Ruth Weiss

Gail & Leonard Pogach

Mary & James Griggs

Mary Lou Ferenchick

Herb Strauss

Eva Orlow

Arleen & Bill Barisa

Phyllis & Larry Schachter

Kay & Leo Carlin

Alan Flash

Marilyn & Alan Stein

Shelley & Arnie Rosenberg

Arleen & Bill Barisa

Deb & Dan Wachspress

Susan & Harve Strouse

Michelle & Lee Schachter

Joy & Marc Finkel

Rose & Michael Koretsky

Michelle, Michael & Jeanette Weinberg

Mindy & Rick Albuck

Beth & Stan Gittlen

The Levey Family

Elaine Lutsky, mother of Robyn Hessberger

Arleen & Bill Barisa

Alan Lipkin

Charlotte & Harold Denenberg

Scott Weinstein

Janet & Bill First

Esther Knopfmacher, mother of Lewis Knopfmacher

Phyllis & Larry Schachter

Joy & Marc Finkel

Sherry & Randy Flager

The Levey Family

Roz Jacobson, sister of Phyllis Browne

Elaine & Len Cantor

Janet & Willard First

Building Fund

(continued)

In Memory of:

Beverly Bunin, Grandmother of Ben Bunin

Joy & Marc Finkel

Sherry & Randy Flager

Vivian Berman

Janet & Willard First

Cook for a Friend Fund

In Memory of:

Alan Flash

Beth & Ari Sadoff

Estelle & Bill Blaustein

Esther Knopfmacher

Stuart Lighter & Carol Benderson-Lighter

Eric Marinoff

Sean Miller

Eric J. Marinoff Memorial College

Outreach Program Fund

For the Yahrzeit of:

Eric Marinoff

Janet & Norman Marinoff

Jacob Marinoff

Janet & Norman Marinoff

In Memory of:

Esther Knopfmacher

Marilyn & Alan Stein

Gloria & Ed Mittleman

Grace Jacob

Margie & Jack Wellerstein

Cara & Leon Weissman

Janet & Norman Marinoff

Debbie & Steve Lubin

Sylvia Goldberg

Michelle, Michael & Jeannette Weinberg

Maurice Potosky

Barbara Fineman

Sara Pollock

Alan Lipkin

Barbara Fineman

Vivian Berman

Barbara Fineman

Sylvia Goldberg

Carol Sohmer

Herb Strauss

Susan & Harve Strouse

Sister of Mitchell Katz

Gloria & Ed Mittleman

Eric J. Marinoff Memorial College Outreach Program Fund (continued)

In Memory of:

Alan Flash

Barbara Fineman
Debbie, Steve, Brittany & Josh Lubin
Sara Pollock
Denah Heller
Donna Wilder
Gloria & Ed Mittleman
Eric Rynar
Grace Jacob
Charlotte & Harold Denenberg
Ilene & Arthur Isaacs
Margie & Jack Wellerstein
Ruth & Jack Laks
Judy Nussbaum & Marvin Gelblat
Marian & Milt Berger
Stuart Lighter & Carol Benderson-Lighter
Judith & Neil Fisher
Janet & Norman Marinoff
Diane Axelrod & Robert Lindenbaum
Lois & Sid Clearfield
Stanford Gross
Sylvia Goldberg
Phyllis Browne

Judith Kazansky, sister of Marvin Gelblat
Linda & Ken Greenberg & Family

Eric Marinoff

Sean Miller
Sean, Marjorie & Adele Miller

Speedy Recovery:

Judy Nussbaum

Linda & Ken Greenberg & Family

Fierverker Education Fund

In Appreciation of:

Karen Lewin-for her support & assistance for Abigail's Bat Mitzvah
The Greenberg Family

In Honor of:

Abigail Greenberg's Bat Mitzvah
Faye Laveson

In Memory of:

Esther Knopfmacher
Faye Laveson

Natalie Tyler's father
The Samachson Family

Fierverker Education Fund (continued)

In Memory of:

Robin Hessberger's mother
The Samachson Family

Alan Flash

Faye Laveson

Speedy Recovery:

Carrie Matez

The Samachson Family

The Fund for Shabbat & Holiday Luncheons in honor of Phil & Harriet Freidenreich

In Honor of:

Birth of Alison Ruby Davis, granddaughter of Michelle Flash
Harriet & Phil Freidenreich

Speedy Recovery:

Stuart Graff

Rhoda & Aaron Levine

Golda Meir Religious Books & Articles Fund

In Memory of:

Ruth Weiss

Karen & James Holtz

Morning Minyan Fund

In Appreciation of:

Karen & Marc Shoemaker's kindness & support
Judy Nussbaum & Marvin Gelblat

Perry Stein's kindness

Judy Nussbaum & Marvin Gelblat

Larry Kanner's kindness & support

Judy Nussbaum & Marvin Gelblat

Morning Minyan's kindness

Michelle Flash

In Memory of:

Phyllis Browne's sister, Roz
Charlotte & Harold Denenberg

Herb Strauss

Cara & Leon Weissman
Loren Hurwitz & Flo Friedman Hurwitz
Eva & Sid Moszer
Janet & Willard First

Speedy Recovery:

Marc Shoemaker

Judy Nussbaum & Marvin Gelblat

Oring Family Hesed Fund

In Memory of:

Alan Flash

Linda & Ken Greenberg
Phyllis & Larry Schachter
Liz Ravitch, Sara & Ben Weinberg
Rachael & Richard Oring
Judy Nussbaum & Marvin Gelblat

Vivian Berman

Cara & Leon Weissman

Ben Bunin's Grandmother

Liz Ravitch, Sara & Ben Weinberg
Rachael & Richard Oring

Ruth Weiss

Leon Hurwitz & Flo Friedman Hurwitz

Rosalind Jacobson, sister of Phyllis Browne

Stuart Lighter & Carol Benderson-Lighter

Herb Strauss

Del Rene Goldsmith

Speedy Recovery:

Carrie Matez

Liz Ravitch

Rosalie Young-Levinson

Liz Ravitch, Sara & Ben Weinberg

Marc Shoemaker

The Oring Family

Perez Youth Scholarship Fund

In Honor of:

Birth of Alison Ruby Davis, granddaughter of

Michelle Flash

Bonnie Abrams

In Memory of:

Lee Toll

Bonnie Abrams

Alan Flash

Bonnie Abrams

Prayer Book Fund

In Honor of:

Jared Merchiere's Bar Mitzvah

Gretchen & Marc Merchiere

In Memory of:

Vivian Berman

Elaine & Len Cantor
Stuart Lighter & Carol Benderson-Lighter
Rochelle Klein & Bob Mednick

Prayer Book Fund

(continued)

In Memory of:

Husband of Carol Wolf-Wittman

Linda Friedman
Melissa Friedman

Alan Flash

Harriet & Phil Freidenreich
The Women of Beth El

Renee Packer

Phyllis & Nick Merchiere

Rabbi's Discretionary Fund

Yahrzeit of:

Tema Epshteyn

Galina Sakhnovich & Lewis Rose

In Appreciation of:

Rabbi Weiss-For all her support and guidance for

Abigail's Bat Mitzvah

The Greenberg Family

Young Adult Engagement Activities

Lou Balcher

In Memory of:

Alan Flash

Susanne & Chris Bentley
Doris & Stanley Shinnars
Joan Garber
Leonora Perlmutter
Marci Levin
Martha Breisch
Mickey & Marvin Dickler

Ruth Weiss

Michael & Judith Mael

Rhoda & Morris Volk Camp

Ramah Scholarship Fund

In Appreciation of:

Rabbi Weiss's support and guidance with Micah's

Bar Mitzvah

Shari & Ian Senior

Karen Lewin's support of Micah during his Bar

Mitzvah

Shari & Ian Senior

In Memory of:

Vivian Berman

Caren & Nat Bosk

Recognize your loved ones and friends for simchas, speedy recoveries and condolences, by donating to one of Congregation Beth El's Funds.

Make your contribution by visiting

www.bethelyardley.org, click the "Donate" tab on the menu bar or fill out the Congregation Beth El Gift Opportunities Form on the last page of this Shofar.



Thank you

We would like to thank the Beth El Community for all of their support of Abigail for her Bat Mitzvah. Special thanks goes to those of you who either donated to Sara's Smiles or made cards for the pediatric oncology patients that the organization helps. A shout out also should go to the regular Shabbat morning crew who supported her as she lead services many times before her special day. Of course, no list of thank yous would be complete without thanking Karen Lewin, all the FJLC teachers, Phyllis Schachter, and the Rabbi.

- Ken & Linda Greenberg

Tree of Life: Honor a birthday, anniversary, wedding, Bar/Bat Mitzvah or any other happy occasion with an engraved leaf on our tree of life for \$180 or a boulder for \$750.

Donation Cards: Our donation cards are a wonderful way to recognize important life - cycle events, extend wishes for speedy recovery or show your appreciation for someone’s kindness and helps fulfil the mitzvah of tzedakah. There are two different cards to choose from-a beautiful menorah card (\$7) and a colorful picture of three of our Torot (\$18). Your gift can also be designated to one of the funds below. Contributions may be made online at www.bethelyardley.org, by contacting the office, 215-493-1707x4 or mailing in the form below.

Book Dedications: There are also opportunities to have a bookplate placed on the back of the front cover of a Siddur (prayer book) or Machzor (High Holiday Prayer Book) - any time someone opens the book, they will learn of your donation: Prayer Book, \$54; High Holiday Machzor, \$54.

Yahrzeit Plaques: Among the customs to help us with loss and bereavement is the commemoration of a loved one on a Yahrzeit plaque. These plaques, which are affixed to a special memorial board in our Chapel, are an expression of love and devotion. The plaque will be mounted on our Yahrzeit board in perpetuity, each year you will receive a notice of the date of the Yahrzeit, it will be announced during our Shabbat Services, and the plaque will be lit in memory of your loved one for a full month. The cost is \$750 for members and \$900 for non-members. Contact the office to receive a form.

Cemetery Plots: Beth El owns plots at King David Memorial Park in Bensalem. Call the office for further details and pricing information or contact Michael Weinberg at 215-321-1312.

CONGREGATION BETH EL DONATION FORM

Enclosed is my gift of \$_____ (Menorah Card \$7, Torah Card \$18+)

- ___Adult Education Fund

___Building Fund

___Cook for a Friend Project Fund

___Eric J. Marinoff Memorial College Outreach Program Fund

___Fierverker Education Fund

___Golda Meir Religious Books & Articles Fund

___Fund for Shabbat & Holiday Luncheons
in honor of Phil & Harriet Freidenreich

___Morning Minyan Fund

___Oring Family Hesed Fund

___Perez Youth Scholarship Fund for Jewish Camps
& USY Programs

___Rabbi’s Discretionary Fund

___The Rhoda & Morris Volk Camp Ramah Scholarship Fund

___Lev Shalem Prayer Book (\$54)

___Lev Shalem Machzor Donation (\$54)

Recipient _____

Occasion _____

Recipient Address _____

Donor Name (s) _____

Donor Address _____

I would like more information about:

Tree of Life

Yahrzeit Plaques

Cemetery Plots

Other Ways I Can Give

☐

☐

☐

☐

Mail check payable to: Congregation Beth El 375 Stony Hill Road Yardley, PA 19067



**Congregation
Beth El**

375 Stony Hill Road
Yardley, PA 19067
215-493-1707
Email: office@bethelyardley.org

Mazel Tov! If you find all 10 Count ben Counts in this Purim Edition of the Shofar, you have a minyan! Come to the office for a special gift.



Shofar Editorial Committee

Jocelyne Balcher, Bill Barisa, Milt Berger, Charlotte Denenberg, Alex Geiger, Helene Geiger, Sara Pollock

Main Office.....215-493-1707
Email.....office@bethelyardley.org
FJLC.....x. 2
Gift Shop.....x. 6

Professional Staff

Raysh Weiss, Rabbi.....x5
Karen Lewin, Education and Youth Director.....x2
Barbara Schwartz, Synagogue Administrator.....x4
Marian Berger, Bookkeeper.....x4

