

The Shofar

The Publication of Congregation Beth El of Bucks County

March/April 2019

Adar I & II – Nisan 5779

CBEPN

((PURIM))

CONGREGATION BETH EL PURIM NETWORK

Are You a Purim Phanatic?

**Things are going to get Gritty at our
Purim Sports-Themed Celebration!**

**Haman might just Swoop
the King's ring back from Mordechai!**

WEDNESDAY, MARCH 20, 2019

5:00pm: Family Megillah Reading

5:30pm: Shushan Sports Bar & Restaurant Seudah - Purim Meal

**\$15/Adult \$10/Child 3-13 \$50/Family Maximum
(Hamburgers, Hot Dogs, Veggie Burgers,
Pasta, Salad, & Dessert)**

6:15pm: Purim Shpiel

7:00pm: Full Megillah Reading

RSVP by 3/15; Online at BethElYardley.org or call the office, 215-493-1707 x4

March 21 7:00am: Morning Minyan & Megillah Reading; No RSVP needed

Come dressed as your favorite Sports Star!

Everyone is encouraged to wear a costume!



**Congregation
Beth El**

375 Stony Hill Road • Yardley, PA 19067
215-493-1707 X4 • www.BethElYardley.org

SCHEDULE OF SERVICES

Morning Minyan

Sunday 8:00am
Monday - Friday 7:00am

Evening Minyan

Monday - Thursday 7:30pm

Shabbat Services

Friday 6:00pm
Saturday 9:30am

SYNAGOGUE OFFICE HOURS

Monday - Thursday 8:30am - 4:30pm
Friday 8:30am - 2:00pm

BUBBES' JUDAICA SHOP HOURS

For more information about the gift shop or to schedule an appointment, contact Michelle Flash, michelleflash@me.com or call 215 - 284 - 5624.

UPCOMING EVENTS

Check out our website

www.bethelyardley.org

NEXT SHOFAR DEADLINE

May/June Deadline

April 15

President's Message



Shalom,

It is hard to forget the brisk cold each and every morning as I begin my day. While the temperatures may make my fingers a little uncomfortable, I am subtly reminded of what the coming weeks bring as the temperatures begin to rise. Along with a dream of spring, the upcoming final season of the transcendent HBO drama *Game of Thrones* is set to return. For those of you unfamiliar with the premise of this show, it tells a grand tale of kings and queens, dragons and magic, and more specific to the Beth El community, religious traditions and community values. The characters in *Game of Thrones* note the pride in their traditions when defending themselves politically and militarily. Similarly, it is important for us to always recall the traditions and values that make our Beth El community so unique. As the winds of winter slowly subside, our vibrant community heads into some of the highlights of the Jewish year, Purim and Passover.

Purim is a little special this year, as it takes place in the month of Adar II, the month we add as part of the leap year on the Hebrew calendar that occurs approximately every three years. The story of Purim commemorates Mordechai and Esther overcoming the evil of Haman. There are several traditions that we continue to this day to help us remember. First, we read the story in Megillat Esther every Purim. I don't want to give away the ending so please come hear the reading of the Megillah on Wednesday evening March 20 or Thursday morning March 21. If you want to enjoy an adapted version of the story, come see our sports related Purim Spiel before the Megillah reading on Wednesday night. And don't forget your appetite as we eat *Hamantaschen*, the three cornered pastry reminiscent of Haman's hat, filled with poppy, chocolate or fruit. As always, costumes are encouraged.

In April, we will celebrate Passover, the holiday that commemorates the exodus from Egypt. We will do our spring-cleaning in earnest as we prepare for the holiday. It is a time to celebrate with family and friends as we join around the Seder table. Our community will come together to eat, remember and pray; it is the third time of the year that we will say the Yizkor service, to recall those who are no longer here to celebrate with us. Please join us for the Yizkor Service on Shabbat morning, April 27. Both holidays are happier holidays, reminding us how our people were able to overcome our oppressors, Ahashverosh on Purim and Pharaoh on Passover. But they also both have sadness associated with them and we therefore remember with a fast day before each holiday, The Fast of Esther and the Fast of the First Born. The morning before the first seder the Rabbi will share with us as he completes a section of learning. Upon completion, we will participate in a *siyum*, or party, that will remove the burden of the fast and allow us to eat during the day.

I look forward to seeing you for Purim, Passover, and, as a first born, at the *siyum*. Please join us for our upcoming rabbinic candidate visits and share your thoughts about each of them.

I leave you with a quote from *Game of Thrones*, **"Never forget what you are, the rest of the world will not. Wear it like armor and it can never be used to hurt you."**

Laurence H. Schachter

President

president@bethelyardley.org

Rabbi's Message



Down is Up and Up is Down – Purim's Reversals

If you were going to celebrate just one holiday in the Jewish calendar, what would you choose? Many would choose Chanukkah, or Rosh Hashana, or Passover. But I suspect a few would also choose Purim. After all, it's fun, it's for the most part free of restrictions and eating and drinking are present in abundance. So what's not to like?

What is less obvious about Purim is the fact that it's a holiday about "reversals." Haman, our enemy, sought to destroy us, but his plans were turned upside down through the counter-plot of Mordechai and Esther. Think about it for a minute and you'll see just how many reversals there are. In the beginning, Haman is given power to destroy the Jews after receiving a royal signet from Ahasverus. After Haman's death, Mordechai is given the ring and sends out decrees to rescue all the Jews from Haman's decree. Haman builds gallows for Mordechai, but the king ends up hanging Haman himself on that gallows. Haman tells Ahasverus how to appropriately honor the king's trusted servant, only to find that the proposed treatment is to be given to Mordechai. And Esther, who appears to be a friend to Haman after inviting him to the banquet with Ahasverus, ultimately is the one who exposes his treachery and has him killed. In fact, the greatest reversal is noted very near the end of chapter nine of the Megillah, when it says that during the war between the Jews and Haman's followers, many among the population "mityahadim" – "pretended to be Jews" – in an effort to save their own lives.

There are many possible lessons one could derive from these reversals, but perhaps the simplest and most straightforward is the best. Whenever we use violence and murder against others, they backfire and end up harming us in the process. Haman's anti-Semitism, which it is hinted was handed down directly from that of Amalek, is the crudest iteration of that hatred. It holds that not only the Jewish faith must be eliminated, but the Jewish people themselves as well. That's why Haman was not merely defeated, but hanged along with his ten sons, whose names are recited in one breath.

In a world filled with internecine violence, it's worth noting this lesson. In war-torn nations everywhere, enemy factions use bombs and bullets against the "other", undeterred by the loss of lives. The result is predictable – there are no winners in the conflict, and all the groups suffer catastrophic losses.

Knowing about these reversals may not make the holiday any more fun. But it certainly shows that there are many reasons beyond "fun and games" that testify to Purim's importance.

Scott A. Hoffman
Rabbi
Rabbi@bethelyardley.org

Rabbinic Candidate Visit: Rabbi Raysh Weiss, PhD.



Rabbi Raysh Weiss is the rabbi of Shaar Shalom Congregation in Halifax, Nova Scotia, where she also serves as an associate chaplain at Dalhousie University. She is an honors graduate of Northwestern University, where she majored in Radio, Television and Film and Comparative Literature; was a J. William Fulbright fellow in Ethnomusicology in Berlin, Germany; holds a Ph.D. from the University of Minnesota in Cultural Studies and Comparative Literature; and was ordained by the Jewish Theological Seminary of New York in 2016.

Throughout her years in rabbinical school, Rabbi Weiss was a Wexner Graduate Fellow and served on the board of T'ruah: The Rabbinic Call for Human Rights as well as the board of the National Havurah Committee. In 2015, Rabbi Weiss was named one of New York City's "36 Under 36" by the Jewish Week, and in 2001, she was a Bronfman Fellow in Israel.

Rabbi Weiss brings to her rabbinate her passions for building vibrant and inclusive community, encouraging spiritual and intellectual inquiry, and promoting social justice activism. She is particularly proud of a number of her pastoral accomplishments at Shaar Shalom, where she has served as Rabbi for the past three years. During this time she has initiated and facilitated a regular communal Jewish loss support group; she has introduced programs emphasizing social justice and community-building, such as launching Shaar Shalom's first-ever Tikkun Olam Committee and working with youth to create their own social action projects; and she has spear-headed several new educational initiatives, including the founding of the Halifax Communal Beit Midrash, the creation and implementation of a year-long, weekly Introduction to Judaism class, and the introduction of the Chai Mitzvah adult education curriculum to her synagogue, as well as the creation of several unique experiential educational opportunities for youth.

Rabbi Weiss is committed to promoting widespread Jewish literacy, and to that end, she has written and published many pieces in a variety of publications aimed at the Jewish community at large. She is a regular columnist for the national Jewish newspaper, the Canadian Jewish News, and also writes for Jewish educational outlets such as myjewishlearning.com and Tablet and has designed complementary education resources for Simon Schama's The Story of the Jews (PBS).

Rabbi Weiss, who is both a vocalist and saxophone player, enjoys bringing music into all facets of her life and the lives of those around her. Other hobbies include cartooning, film-making, and cycling. Most of all, she enjoys connecting with people and helping them connect with one another in order to discover their potential together.

Rabbi Weiss is married to Rabbi Jonah Rank, and they are the proud parents of Ariana Weiss-Rank and Meital Weiss-Rank.

Rabbinic Candidate Visit: Rabbi Raysh Weiss, PhD.



Congregation Beth El



Please Join Us As We Welcome Rabbinic Candidate **Rabbi Raysh Weiss, PhD.** March 8, 9, 10

Join us for **ANY** of the following events so that you can be part of this important process. For more information, visit www.bethelyardley.org.

Weekend Schedule

Friday, March 8

Shabbat Evening Services – 6:00pm

Join us as we welcome Rabbi Weiss for a spiritually uplifting Shabbat experience. Following services, join us for Shabbat dinner; lasagna, pasta, mac & cheese, salads, and dessert. No charge. RSVP requested by Monday, March 4; call 215-493-1707 x4 or visit www.bethelyardley.org.

Saturday, March 9

Bible BaBoker – 8:45am Torah Study with Rabbi Weiss No prior knowledge needed.

Saturday Morning Shabbat Services – 9:30am Come and celebrate Shabbat with the congregation. Rabbi Weiss will be joining us and leading parts of our services.

Kadima Shabbat Services (4th – 7th grade) – 10:00am to Noon Children Services

Mini Congo – 10:00am to Noon Children Services

Lunch & Learn with Rabbi Weiss – Noon to 2:00pm Join us for a dairy/vegetarian Congregational luncheon and engaging conversation with Rabbi Weiss, followed by an open Q&A session so that you can learn more about Rabbi Weiss. RSVP requested by Monday, March 4; www.bethelyardley.org or 215-493-1707 x4. No charge.

Childcare – 10:30am - 2:30pm; no charge – RSVP www.bethelyardley.org or 215-493-1707 x4.

Sunday, March 10

Morning Minyan 8:00am Our Beth El Minyan is always open to everyone and we would love to have you join us!

Bagels, Schmooze & Schmear – 8:45am Join us for bagels and a more informal conversation with Rabbi Weiss.

Please RSVP to the Beth El Office 215-493-1707 x4 or visit www.bethelyardley.org for any and all events.

B'nai Mitzvah at Beth El



Jacob Kramer, son of Abbey and Greg Kramer, will be called to the Torah as a Bar Mitzvah on Saturday, March 2, 2019. Jacob has been volunteering with the Ronald McDonald House for 5 years. He has stocked the kitchen, cooked in the houses, completed art projects with families, and held soda tab collections at his school. For his Bar Mitzvah Project Jacob has decided to continue his support of the Ronald McDonald House by holding food collections and soda tabs collections. The Philadelphia Ronald McDonald House supports families of seriously ill children by creating a community of comfort and hope. Mazal Tov!



Ethan Haimovitz, son of Lisa and Kevin Haimovitz, will be called to the Torah as a Bar Mitzvah on Saturday, March 16, 2019. Ethan overcame his fear of dogs, when he fell in love with his family's Shihtzu, Bella (pictured left) as well as his friends Harvey, Sadie, Riley and Lenny. For his Bar Mitzvah Project, Ethan chose to visit the Women's Humane Society in Bensalem, specifically because it is a no-kill shelter. He dropped off donations he collected to their animal center, spent time visiting all the dogs and gave them treats. Mazal Tov!

BAR-BAT MITZVAH UNIVERSITY 2018-2019

Preparing Congregation Beth El's 6th & 7th Graders
and their Parents for that Special Simcha!



Join Us on Shabbat Mornings

One Shabbat morning a month we will come together to pray, to learn and to share. Each Shabbat we will focus on an important aspect of the Bar/Bat Mitzvah journey in an effort to create a meaningful experience for all.

Join us in the Chapel 10am-12pm

March 9 April 13 May 11

In the 6th & 7th grades, it is strongly recommended that B'nai Mitzvah learners attend Shabbat morning service at least once a month in order to become familiar with the service and gain comfort as both a participant and leader. For more information, contact Karen Lewin, Karen@BethElYardley.org or 215-493-1707 x3.



Congregation
Beth El

Presenting... mini congo

an educational and fun Shabbat program
for children pre-K to 5th Grades



Shabbat Prayers & Songs
Engaging Activities
Story Time
Torah Lessons
Oneg Shabbat

A SHABBAT CULTURAL ENRICHMENT EXPERIENCE!
LED BY LIZ RAVITCH IN ROOM 209

10:00 am to 12:00 pm on the following Saturdays
March. 9 April 13 May 11

We ask that parents of children pre-K to 2nd grades
accompany their child(ren) to minions congo.

Bucks County Jewish Youth Events

Calling all 5-7 grade
Superheroes!

KADIMA Konvention!



USY
Mizrach

HEROES

Cost: \$99

MARCH BETH EL

8-9 375 STONY HILL rd
Yardley, PA 19067

Register: Regpacks.com/Mizrach1819



JOIN BUCKS USY FOR OUR ANNUAL MYSTERY BUS TRIP.

BUS LEAVES FROM BETH EL YARDLEY AT
7:15PM

SATURDAY MARCH 9TH, 2019.

PICKUP BETWEEN 11:45-12:00

\$25-MEMBERS \$30-NON MEMBERS

QUESTIONS? EMAIL SAM, OUR ADVISOR AT
SES2239@COLUMBIA.EDU



Prom PARTY

PLEASE JOIN US TO CELEBRATE
THE 2019 ANNUAL PROM

Mizrach USY

March 16th 9-11

Beth Sholom

8231 Old York Rd. Elkin Park PA 19027

Tickets: \$30 in advance

Pay online at: Regpacks.com/Mizrach1819

\$35 at the door

BUSY bus leaving at 8:15pm from Beth El
375 Stony Hill Rd. Yardley, PA 19067

\$10/person; To reserve your seat email
Karen Lewin, karen@bethelyardley.org

ESCAPE ROOM

MARCH 31 AT 1 45PM

Solves puzzles, eat ice cream, 100% Fun!

\$15 for member - \$20 for non-members

Drop off at 1:45PM at All In Adventures
Neshaminy Mall Level 1 Near AMC Theaters

Pick-up at 3:45PM at FRIENDLY'S
Neshaminy Mall Level 1 Near Boscov's

Register & Submit Payment Online at:
<http://tinyurl.com/yykn4oqv>

Chaverim
3rd & 4th Graders
PostmyWall.com



KADIMA
5th, 6th & 7th Graders

The Combined Chapter of:
Adath Israel, Lawrenceville, NJ
Beth El, Yardley, PA
Brothers of Israel, Newtown, PA
Ohev Shalom, Richboro, PA
Tifereth Israel, Bensalem, PA

Passover 2019

It is time to begin thinking about Pesach. Good preparation is the key to a wonderful Seder and a meaningful Pesach.

Hametz (leaven) – The main ritual observance of Pesach is ridding our homes of all forms of leaven. First, all bread products should be removed, either donated to a food pantry, sold, given or thrown away by nightfall on the day before Pesach. Second, we do a ritual search for leaven (*bedikat hametz*), this year on the evening of **Thursday, April 18**, traditionally by candlelight, using a feather and spoon to collect several pieces of specially placed leaven. This is a great ritual for the whole family! We then recite the formula for nullifying any unfound hametz (*bittul hametz*). In the event that some products are too expensive to actually be disposed of, they may be sold to a non-Jew for the duration of Pesach, and Rabbi Hoffman can act as your agent in that transaction if you sign the form in the synagogue **office by Friday, April 12**. On the morning of the First Seder Night, (Friday, April 19) we destroy the hametz (biur hametz) that we found the night before, usually by burning it, and we again recite the formula for nullifying unfound hametz. The rituals for searching, nullifying and destroying hametz can be found in a good Haggadah. **Beth El will be collecting your nonperishable, unopened chametz and donate it to the Loaves & Fishes Food Pantry. Please leave your donations in the lobby no later than Friday, April 12th.**

Ta'anit Bekhorim (Fast of the Firstborn)

On the day leading into Seder, all firstborn Jews customarily fast from morning until evening. However, if one takes part in a mitzvah that includes a feast, the fast is cut short. Join Rabbi Hoffman on **Friday, April 19 at 7:00am morning minyan for some study.**

Ma'ot Hittin

As on every Jewish holiday, it is praiseworthy to give to tzedakah so that others will have enough to eat and, in the case of Pesach, provisions for Seder. One wonderful opportunity for doing so is by contributing to Mazon, a Jewish response to hunger. We have their materials in the synagogue lobby or go to: <http://www.mazon.org>. Please make checks payable to Mazon and mail to: P.O. Box 96116 Washington, D.C. 20090.

Seder

The complex details of Seder are best addressed through a good Haggadah. The Rabbinical Assembly's Feast of Freedom includes a lot of wonderful material, and the Hartman Institute's *A Different Night* is great for kids, but many others are also worth checking out. Remember that the best Seder experience will be one where everyone participates by reading, acting out the story or telling their own stories of personal redemption. There are many online resources to help you enhance your Seder.

Schedule of Passover Services

Friday, April 19 (Erev Passover - 1st Seder) - Office Closed

7:00am Morning Minyan & study with Rabbi Hoffman
7:24pm Candle Lighting /No Evening Services

Saturday, April 20 (1st Day of Passover - 2nd Seder)

No Bible BaBoker Class
9:30am Shabbat Morning Services 8:25 Havdalah

Sunday, April 21 (2nd Day of Passover)

9:30am Passover Services 8:26 Havdalah

Thursday, April 25 (6th Day of Passover – Chol Hamoed)

7:00am Morning Minyan 6:00pm Passover Services
7:30pm Candle Lighting

Friday, April 26 (7th Day of Passover) - Office Closed

9:30am Passover Services 6:00pm Shabbat Evening Services
7:31pm Candle Lighting

Saturday, April 27 (8th Day of Passover)

9:30am Shabbat Morning Services with Yizkor Service
8:32pm Havdalah

Office closes at Noon:

April 18, 22, 23, 24, & 25

Office Closed:

April 19 & 26



DO YOU NEED A PLACE TO GO FOR A SEDER OR DO YOU HAVE SPACE AT YOUR SEDER TABLE FOR A GUEST?

Each year at the Passover Seder we recite the words,
"Let all who are hungry, enter and eat,
all who are in need,
let them come celebrate Pesach."

In order to fulfill this prayer, we are matching those
who have open seats at their seder tables with those
who are looking for seders.

If you fall in either category, please call the office by
April 1st, 215-493-1707 x4 or email
office@bethelyardley.org.
Passover begins on Friday, April 19th.

Thank you in advance to those who host, making it
possible for others to fulfill the mitzvah of
attending a seder.

YOM HASHOAH

Holocaust Remembrance Day Commemoration



Wednesday, May 1, 2019

7:30pm in the Sanctuary

Commemoration Service

Including Memorial Prayers, Readings and Shoah Candle Lighting

Followed by a
Documentary Film

STEAL A PENCIL FOR ME

is a compelling documentary
feature film by Academy
Award nominee Michele
Ohayon about the power of
love and the ability of
humankind to rise above
unimaginable suffering.



If you have a personal connection to the Shoah and would like to participate in this program, please contact Karen Lewin in the office.

This program is open to the public and we
welcome teens and adults to join us.



**Congregation
Beth El**

375 Stony Hill Road • Yardley, PA 19067

215-493-1707 • www.BethElYardley.org

The Schwarz - Kurz - Zeller Adult Education Institute Presents

Wondering what's going on in the world of Adult Education at Beth El?

Wednesday Morning Classes!

Join our Wednesday morning learners at 9:30am - 10:40am for American Jewish History, taught by Harriet Freidenreich. Stay for snacks and a Torah and World Affairs class, taught by Rabbi Scott Hoffman from 10:45am - 12:00noon.

Saturday Morning is Bible Ba-Boker Time!

Get inspired and informed before Saturday Morning Services! Join our eclectic bunch of early risers for an 8:45am study group led by Rabbi Hoffman. Learn a little, laugh a little, and get into the Shabbat spirit. Everyone welcome!

Learning Events Offer Something for Everyone!

Learning doesn't stop for winter at Beth El. February featured guest lecturer and journalist Gary Kraut (see photos below), who took us on a pictorial tour of historical Jewish Paris. From the medieval depiction of "the synagogue" on the Gates of Notre Dame Cathedral, to Napoleon's granting full citizenship to the Jews, to The Dreyfus Affair and World War I, to German occupation and the round-up of Jews during World War II, and to today's Parisian/Jewish world – Gary showed us the Jewish side of Paris that most of us have missed.

February was also Book Nosh month. As always, bagels, shmears, and good conversation were the order of the day. A few eager (and hungry) book noshers also stayed around for pizza and bingo after the discussion!

Major Learning Events Coming Up in March/April!!

March is Film Festival month (see page 12) Six films are planned, starting on March 2. For more information and up-to-date list of films, contact Judy Nussbaum, 215-431-4729 or call the Beth El office, 215-493-1707 x4.

April is our Special Book Event (see page 13) This year, we're bringing in author Janet Benton to discuss her historical novel, Lilli De Jong. There will be a book signing, and a special dessert buffet featuring "treats from the world of Lilli de Jong." The program is on April 28, from 2:00pm - 4:00pm. Cost: \$15/person. Please see the flyer in this Shofar for more information and RSVP.

Watch This Space!

We have more Adult Ed programs planned for May and June. On May 1, we will partner with our Hebrew High School on a Yom HaShoah Program (see page 9). On June 23rd, author David Richman will share a Jewish memoir about Wilt Chamberlain and the original 76ers Basketball Team.

Want to get involved in Adult Ed planning? Please contact Helene Geiger at adulted@bethelyardley.org.



Gary Kraut



Gary Kraut



The Schwarz - Kurz - Zeller Adult Education Institute Presents



For the literary omnivore who likes to graze

Book Nosh, With a Special Guest! Sunday, April 28, at 2:00pm

Book Nosh is doing something a little different this time. Usually, we get together to schmooze about books, movies, TV shows, art exhibitions, Broadway productions, operas, and other cultural happenings that have a Jewish theme, a Jewish author, or Jewish characters. And of course, most importantly, we get together for the free bagels and schmears.

This time, we are presenting a **book talk by an author**. There will be a question and answer period and a book signing afterward, so there will plenty of opportunities for dialogue with the author, as well as our usual, delightful profusion of schmoozing after the lecture.

Special Guest for our April 28 meeting – Author Janet Benton will be our speaker and special guest for this program. She will discuss her novel, **Lilli de Jong**. Set in 1883 Philadelphia, it is the story of an unwed Quaker mother, who will do almost anything to keep her daughter alive as she struggles against the moral strictures, prejudices, and mores of society. It is replete with heart-tugging emotion, wisdom, and Jewish values.

You may wish to bring a check or a little extra cash, in case you decide to buy an autographed copy of the book.

Please note a different starting time. This program will start at 2:00pm sharp on Sunday, April 28.

Final difference – the food will be much better but it won't be free. There will be a delicious dessert buffet that you have come to expect at Beth El. The cost will be \$15 per person.

Refreshment buffet including *treats from Lilli de Jong's garden*

Program Cost: \$15 per person

RSVP requested: 215-493-1707 x4 or visit www.bethelyardley.org

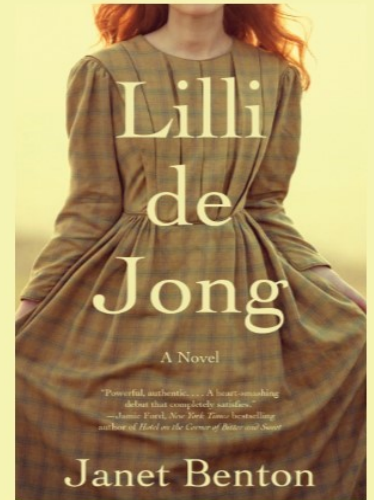
The Schwarz - Kurz - Zeller Adult Education Institute Presents



*The Schwarz-Kurz-Zeller
Adult Education Institute,
Beth El's Book Nosh Group &
The Women of Beth El
present*

Author

Janet Benton



SUNDAY, APRIL 28 2:00pm

Join us as we host Janet Benton:

Meet! Janet will discuss her award-winning novel *Lilli de Jong*. Set in Victorian-era Philadelphia, it's the story of an unwed Quaker mother who will do almost anything to keep her daughter in the face of staggering prejudice. From rural Germantown to elegant Rittenhouse Square, Benton's well-researched book opens an authentic window into our local past – and opens our eyes to social inequalities still with us today. The book is replete with heart-tugging emotion, wisdom, and Jewish values.

Greet! Book signing with Janet Benton will follow program. Books will be available for purchase through the author on the day of the program.

Eat! Sample special treats from Lilli de Jong's garden and old Philadelphia.

Donate! Bring new or gently-used bras and sealed women's sanitary products for The Women of Beth El's "For the Girls" campaign to support homeless and dislocated women. (Pink donation boxes can be found in Beth El lobby).

RSVP today! \$15 per person; Visit www.bethelyardley.org to RSVP or call the office, 215-493-1707 x4.



**Congregation
Beth El**

375 Stony Hill Road • Yardley, PA 19067
215-493-1707 x4 • www.BethElYardley.org

Please complete the form below and return it to Congregation Beth El: ATTN Author Janet Benton

Name _____ Email _____

Phone # _____

\$15 x # of adults _____

_____ Check Enclosed (Payable to Congregation Beth El) _____ Bill my Account (members only)

The Schwarz - Kurz - Zeller Adult Education Institute Presents



MARCH 2 - 7:00pm: "GOOD THOUGHTS, GOOD WORDS, GOOD DEEDS: THE CONDUCTOR ZUBIN MEHTA" Germany, India 2016 English, German, Italian (subtitles); 89 minutes. A documentary that follows the dazzling international career of a musical maestro. Filled with stunning performances and interviews with friends, family, and colleagues, this globe trotting biography is a magnificent tribute to a virtuoso and true believer in the international language of music.



MARCH 23 - 8:15pm: "KEEP THE CHANGE" USA 2017 English, 94 minutes. While protagonist David struggles to come to terms with his own high functioning autism, he unexpectedly falls for Sarah, a quirky and outgoing woman whose lust for life both irks and fascinates him. A refreshingly off-kilter story about the ups and downs of romantic life and the rewards of acceptance and mutual trust.



MARCH 9 - 7:00pm: "ITZHAK" 2017 · Documentary · 1h 23m. "Praying with the violin." The young man who struggled to be taken seriously as a music student, when schools only saw his disability. Itzhak himself is funny, irreverent, and self deprecating. He personifies the resilience, vision, and contribution of the Jewish people.



MARCH 30 - 8:30pm: "THE LAST SUIT" Argentina, Spain 2017 Spanish, German, Polish, Yiddish (subtitles); 86 minutes. In this bittersweet and wistful road movie, 88 year old Abraham Bursztein feels that he's about to be put out to pasture by his children who have sold his home in the suburbs of Buenos Aires and booked him into a retirement home. Abraham sets off on an adventure halfway around the world to find the man who saved him from Auschwitz.



MARCH 16 - 8:15pm "LEVINSKYPARK" Israel 2016 Hebrew, English (subtitles); 66 minutes. A documentary about the tens of thousands of refugees from sub-Saharan Africa who are seeking relief and safety in Israel only to find a society bitterly divided on how to treat them.



APRIL 6 - 8:30pm: "SAND ON THE FLOOR" 57 minutes. The film gives us an intimate look at Jewish life, shedding light on its traditions and mysteries. And in the process, pries at the cracks dividing the Jewish world today. The epilogue documents the role this congregation and its historic synagogue played in the filmmakers' journey back to Judaism, 49-years after being targeted by a Jewish pedophile.



NAME _____ PHONE# _____
ADDRESS _____ EMAIL _____

*Beth El Members: \$48 pp for the series; \$8 pp/per movie

*Non-Beth El Members: \$60 pp for the series; \$10 pp/per movie

Includes popcorn, snacks & drinks

Indicate number of tickets: _____ 3/2 _____ 3/9 _____ 3/16 _____ 3/23 _____ 3/30 _____ 4/6

Total \$ _____ check made payable/mail to: Congregation Beth El 375 Stony Hill Road Yardley, PA 19067

Total # tickets: _____

Hazak



PRESENTS THE TRIDELS

**Sunday, March 10
10:15am Brunch & Show**

From 1962 to 1971, the original Tridels performed, recorded and toured the United States entertaining hundreds of thousands. Now they're back with original Tridel, Mike Bove' and two new members, lovely and talented Cheryl Monroe and exciting vocalist Paul Jerome performing the "Classic Hits of the 60s & 70s". The Tridels honor the great hits and memorable artists. It's a full hour of music, fun and memories!



**HAZAK PRESENTS THE TRIDELS Please RSVP by March 1
(no money will be accepted at the door)**

Name _____ Email: _____

Phone #: _____ # Attending: _____

**Please make check payable to: HAZAK of Beth El and mail to: \$15 members; \$20 non-members
Sara Pollock
1382 Newtown-Langhorne Road
Apt. M-203
Newtown, PA 18940**

For more information contact Barbara Fineman, bfine15@verizon.net or Charlotte Denenberg, denenbergc@verizon.net



**375 Stony Hill Road
Yardley, PA 19067**

Men's Club



Men's Club Outing on January 23rd!



Join the Men's Club and Rabbi Hoffman for Torah on Tap

Discuss the weekly Torah portion while enjoying some spirits! Torah on Tap will meet once a month on Thursdays 7:30pm minyan; 8:00pm Torah on Tap at Congregation Beth El.

April 4 May 16 June 6

For more information contact: Rich Oring, richoring@ncfg.com or 609-658-4594

Women of Beth El



Shalach Manot Sales due by March 8

Erev Purim March 20, 2019

Pick up your Shalach Manot between Sunday, March 17 - March 24 at
Congregation Beth El

Shalach Manot Packers needed

If you would like to help with the packing of the
Shalach Manot on Sunday, March 17 from
9:00am - finish, please email

Linda Greenberg at fivegreenbergs@msn.com.



THE WOMEN OF BETH EL INVITE YOU TO OUR
MEMBERSHIP APPRECIATION
CHAMPAGNE BRUNCH

**"Julia Says,
'Bon Appetit!'"**
by Clay Teunis

PLAYED BY LINDA KENYON

.....

March 31, 2019
10 AM
Couvert \$5

RSVP BY MARCH 22
ESTELLE BLAUSTEIN | (267) 242-9897



Special Shabbat Happenings at Beth El: **ALL ARE WELCOME!**

Join us for Congregational Shabbat Luncheons
following Shabbat Morning Services



March 9

Rabbinic Candidate Visit - Rabbi Raysh Weiss, PhD

March 23

Rabbinic Candidate Visit

April 13

May 11

June 15

Calling all volunteers...

As you know, Congregation Beth El has a Congregational Luncheon once a month. All are welcome to attend. The Kiddush Krew is a group of volunteers that help to prepare for these luncheons. There is no cooking involved and no heavy lifting. We work, socialize, have fun and get to eat, too! If you are available the Friday morning before or you plan on coming to a luncheon and want to help, contact Diane Axelrod, 215-630-5318 or Cara Weissman, 215-736-2641. The Kiddush Krew also assists with the Rabbinic Candidate Luncheons.

The next Rabbinic Candidate Visit is on March 9th.

Bible Ba-Boker - Saturday Mornings before Shabbat Services

8:45am - 9:25am



Join Rabbi Hoffman for a traditional Torah study of the weekly Parsha. No prior Torah knowledge required to participate. All are welcome.

SPONSOR A SHABBAT

In honor of a birthday, anniversary or any other occasion!

Each Shabbat we have a list of Oneg and Kiddush sponsors included in our Shabbat Flyer, TV monitor and weekly email. The sponsorship helps to offset the cost of Kosher challah and cakes. The cost is \$18. To sponsor, please contact Carol Benderson - Lighter, 215-702-1361 or Jill Katz, 215-630-6563.



Share Shabbat

SHARE SHABBAT DINNER ~ ~



Mark your calendars
March 29 6:45pm
May 31 7:00pm (Pot luck)

A great way to feel part of Beth El is to get to know members of the Beth El family. The Share Shabbat dinners have been quite effective in doing this and have fostered many new friendships. March 29, 2019 is the next dinner and we'd love to have you join us.

Please consider inviting a congregational friend/family to join you at a dinner. We will be pleased to place you and your friend at the same home.

At this time we are also seeking hosts for this March 29, 2019 dinner. If you are interested in hosting, please let us know by emailing us at shareshabbatdinner@yahoo.com or contacting Susan Strouse at 215-355-8999. We hope even if you don't host you will RSVP and join us for a wonderful Share Shabbat Dinner.

The RSVP date for the March 29 dinner is March 17.

Susan Strouse, Cara Weissman, Barbara Melmed
Share Shabbat Committee

Friday Evening Services with Potluck Dinners - All are Welcome!



MARCH 22 RABBINIC CANDIDATE VISIT

Come sing and dance under the star!

6:00pm - Instrumental & Musical Friday Evening Services. Join us as we welcome a Rabbinic candidate for a spiritually uplifting Shabbat experience.

7:00pm - Shabbat dinner following services. Lasagna, pasta, mac & cheese, salad, and dessert. More information to follow.

JUNE 21 (Pot luck dairy/vegetarian dinner)



Shabbat B'Yachad

Our family tree grows stronger when
we spend Shabbat together.

Friday, April 5th

6:00pm Shabbat Services followed by dinner

Celebrate Shabbat TOGETHER at Congregation Beth El. Join us for a spiritually uplifting experience as our own youth participate in leading selected parts of the service! Following services, join us for SHABBAT DINNER! Delicious lasagna, pasta, mac and cheese, plus salads and dessert!

This is a FREE event, however we request that you make a reservation so we can plan appropriately.

RSVP by Monday, April 1st.

Visit www.BethElYardley.org or call the office, 215-493-1707 x4.

Social Action Opportunities



GOT NEEDS?

We want to help!

Beth El's Hesed Community is here for you! Each member of Congregation Beth El is a vital part of our caring community. We gladly share in each other's simchas and seek to be supportive of one another when we are experiencing challenges in our lives.

Please let us know if you or someone you know needs assistance. We offer:

*rides to doctor appointments, Shabbat Services, hospital visits, airport & more! *occasional food shopping *set up for a shiva house *babysitter referrals *meals

The possibilities are endless!

For more information contact: Barbara or Marian in the office; 215 - 493 - 1707 x4



"HEART & SOLE" CAMPAIGN

Empty your closet of clutter, Recycle your "gently used" shoes, and Help build Israel's Largest Hi-Tech Cardiac Center in the Middle East!



The American Friends of Kaplan Medical Center (AFKMC) has launched the **"Heart and Sole"** Campaign at the grass roots level to involve donors. We are collecting **"Gently Used" shoes** which will be recycled to more than 50 countries overseas. In return, based upon the total weight of shoes collected, AFKMC will receive a check from the recycling agency, located in Bensalem, PA. Donated shoes are given to less fortunate individuals as well being kept out of the landfills. Perform a mitzvah! Bring all types of donated shoes to Congregation Beth El to the shoe collection bin in the main lobby.

For more information contact Lou Balcher: lbalcher@afkmc.org • Website: www.afkmc.org

Let's Get Cooking

WITH COOK FOR A FRIEND

TUESDAYS at 4:00PM

**March 5 April 2 May 7
June 4 July 9 August 6**

Meet in the Beth El kitchen.

No experience required. Come spend an hour or two and help prepare nutritious, kosher meals for homebound seniors.

**For more information contact: Beth Sadoff at
bjaws999@gmail.com or
215-208-8006**



Volunteers helped to make vegetable soup for seniors on Mitzvah Day.



**Congregation
Beth El**

375 Stony Hill Road • Yardley, PA 19067
215-493-1707 • www.BethElYardley.org

Social Action Opportunities

Breakfast Club for Seniors (BC4S)

By Rachael Oring

I recently met a beautiful Woman/Mom/ Grandma from Morrisville. Things have not been easy for this woman who finds herself raising 3 grandchildren and now responsible for all the needs that come along with that, including providing food, clothing, school and health-care supplies for all. She has her own health-related issues and sometimes after providing all the needs for the children, there is little left for her own health and personal care.

Breakfast Club for Seniors (BC4S). Since 2014 BC4S, founded by Beth El member Rachael Oring and five other Bucks County Families, has been assembling and providing healthy breakfast bags for seniors in need. The organization is a win-win for families as well as seniors in need. Families come together during packing events and experience the satisfaction and joy of giving to the community, while Seniors receive packages filled with necessary items as well as loving notes and letters included in each package.

The more packages that can be filled, the more seniors will be served! Through community outreach, recipients are located through Klein JCC, Bucks County Senior Housing Authority as well as local shelters and providers for children and adults in need.

How can you help? You can start by helping this woman and consider a donation of healthy food items, age appropriate clothing (Boys 7 & 9; Girl 5), as well as diabetic socks and much more. Gift cards to variety stores such as Target, Walgreens or Rite Aid would go a long way as well. Consider joining BC4S during their next packing event or if you can't attend, make a donation of items listed below, money or gift cards to help fill the packages.

Special thanks go to Congregation Beth El and FJLC for making such an impact during a recent packing event during Mitzvah Day on January 20 at Beth El. Through these events seniors like this woman can have their lives touched in such a positive and caring way.

Items that would work great in a breakfast bag:

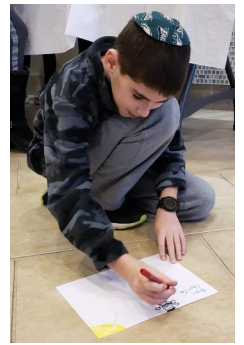
- High protein breakfast items (low in sugar that are individually wrapped)
- Granola Bars (breakfast bars)
- Individual Bags of Nuts
- individual cups of peanut butter
- individual bags of crackers
- individual Small Boxes of Raisins
- Individual Cups of Applesauce
- Individual Crackers w/Peanut Butter or Cheese
- Low Sugar Oatmeal Packets
- Individual Packets of Carnation Instant Breakfast
- Individual Coffee Packs
- Cans of V-8 juice (low sodium)
- Individual bottles of Orange juice and or Cranberry juice (NOT juice cups with tinfoil as a closure, they do not travel well in bags)
- Individual Tea Packs
- Gallon size zipper like bags



To learn more or to make a donation:

Visit the Facebook page - <https://www.facebook.com/BreakfastClub4seniors/> Or Donate - paypal.me/Breakfast4seniors. If you have any questions, you can contact Rachael Oring (rachoring@gmail.com).

Beth El in Pictures!



Beth El Mitzvah Day

A day of community service

Thank you to everyone who donated items and their time to make the day a success!



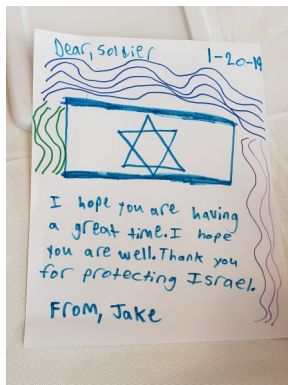
BREAKFAST BAGS FOR SENIORS



COOK FOR A FRIEND



HEART & SOLE CAMPAIGN



LETTERS TO MEMBERS OF
THE ISRAEL DEFENSE FORCES



DONATE NEW & GENTLY USED
CLOTHING & TOILETRIES



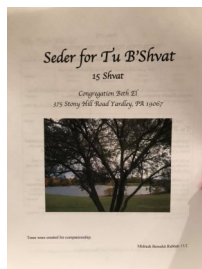
TZEDEKAH BOXES



Beth El in Pictures!

Tu B' Shvat Seder By Judy Nussbaum

Saturday Evening, January 19th, we came together with Rabbinic Candidate Annie Tucker for an evening of learning, gratitude, and community. We began the program with a lovely Havdalah Service and a brief teaching. Despite the ominous weather predictions, the spirit in the room was warm and welcoming. We enjoyed the delicious bounty of fruits and nuts provided by ShopRite and beautiful foliage from McCaffrey's, as we engaged in being mindful and appreciative of our natural world and the lessons of each season. Thank you so much to all those who volunteered to enhance our Tu B'Shvat Seder; Grace Jacob, Diane Axelrod & Bob Lindenbaum, Barbara & Mark Melmed, Carol Benderson-Lichter, Ruth Laks, Francine Safir and Marvin Gelblat. Thank you to all of you who weathered the cold and came out to participate.



PING PONG NIGHT AT BETH EL

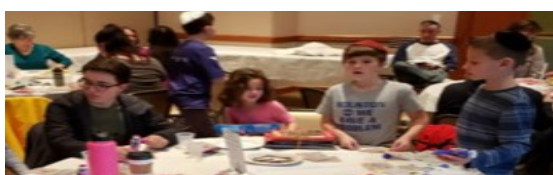
Beth El's first Ping Pong Night was a huge success! Ian Schachter grilled hot dogs and held a ping pong clinic before the tournament began. Thank you to everyone who participated.



BINGO AT BETH EL

Over 100 participants came out to play BINGO. Thank you for making this day a huge success!

-Fundraising Committee





GOLDEN SLIPPER
Gems
In Bucks County

Enrichment Classes
for Older Adults

GoldenSlipperGems.org
267.984.0722



Bubbe's Judaica Shop

SARA BEAMES

STOCKED WITH
AMERICAN & ISRAELI
JUDAICA AND GIFTWARE

GARY ROSENTHAL
COLLECTION

GABRIELI
ERETZ
TALIT FROM ISRAEL

Contact Michelle Flash 215-284-5624



CELEBRATE WITH US! AT BETH EL

Are you planning a

*Wedding *B'nai Mitzvah

*Birthday *Anniversary

*Baby naming or Bris

Beth El can accommodate your needs

Beth El has beautiful rooms that can be rented for
day or evening events.

For more information contact:

Barbara Schwartz,

Synagogue Administrator

barbara@bethelyardley.org or 215-493-1707 x4



SUPPORT BETH EL

PURCHASE GIFT CARDS IN THE OFFICE

GIANT, MCCAFFREY'S & SHOPRITE

Beth El receives money back for every card sold

ADVERTISE IN THE SHOFAR

Do you have a business or do
you know someone who
does? If you would like to
place an ad in

The Shofar contact:

Barbara Schwartz at

215-493-1707 or email

barbara@bethelyardley.org.

SEARCHING FOR THE PROMISED LAND? LET ME LEAD THE WAY!



NADINE SIMANTOV

CO-OWNER/REALTOR®

PLATINUM AWARD WINNER

SPECIALIZING IN BUCKS COUNTY AND THE
SURROUNDING AREAS

kW Nadine Simantov
& Company
KELLERWILLIAMS.
REAL ESTATE

MOBILE- 215-858-2068

OFFICE- 215-757-6100 x125

NADINESIMANTOV@GMAIL.COM

WWW.NADINESIMANTOV.COM

BETH EL COMMUNITY CARES



Our Community Mourns the Loss of:



Eleanor Liss, mother of Janet Marinoff; mother-in-law of Norman Marinoff; grandmother of Jessica Charatan (Jim Charatan); and the late Eric Marinoff; great-grandmother of Eli Charatan

Freda (Fifi) David, mother of Eva Samachson; mother-in-law of Harvey Samachson; grandmother of David and Lisa Samachson

Elaine Ruth Figarotta, mother of David Figarotta (Katia Boven) and Rob Figarotta (Fran); grandmother of Samantha and Cara

Stuart Berkman, brother of Elliot Berkman; brother-in-law of Eileen Berkman



Mazel Tov to Kathi Wachtenheim on the birth of her grandson, Harrison William Gonsalves

Mazel Tov to Abbey-Shayna & Greg Kramer in honor of Jacob being called to the Torah as a Bar Mitzvah

Mazel Tov to Lisa & Kevin Haimovitz in honor of Ethan being called to the Torah as a Bar Mitzvah



Welcome New Members to our Beth El Family

Thomas Moore & Steven Schimchak

We are looking for a few good Minyaners

Congregation Beth El holds both morning and evening minyan services open to our members and friends in the community. We invite you to join us and become a regular volunteer. Take some time from your busy day or week, come to our chapel and pray with friends and neighbors, and be there to support a person saying kaddish or yahrzeit.

It's a mitzvah... It's good for you and it's good for our community.

Morning Services: Monday - Friday at 7:00am

Evening Services: Monday - Thursday at 7:30pm

Sunday Morning Services: 8:00am

For more information call Congregation Beth El Office, 215-493-1707 X4.

To sign up for evening minyan visit www.bethelyardley.org, click on the Minyan icon.



JEWISH FEDERATION FOOD PANTRY

The Jewish Federation's food pantry at KleinLife in Northeast Philadelphia is currently seeking volunteers on select Fridays from 10am - 1pm as it expands its hours to serve more clients.

The Choice Food Pantry at KleinLife features an innovative model where the clients get to choose what food they receive (no pre-packaged food) and use a touchscreen to make their selection.

Anyone interested in volunteering can email Jeremy Heller directly at mail@jeremyheller.com.

Kleinlife

Centered in Community. Inspired by Jewish Values.



BLACK BEAR LAKE DAY CAMP

**THE #1 DAY CAMP
IN THE TRI-STATE AREA IS ONLY
30 MINUTES FROM
CONGREGATION BETH EL!**

AGES 3 to 15!

**CAMPERS CHOOSE THEIR OWN ELECTIVES!
AWESOME WATER PARK ON OUR 5 ACRE LAKE!
AIR CONDITIONED BUSES & BUILDINGS!
HOT LUNCH, SALAD BAR & PASTA SERVED DAILY!**

INSTRUCTIONAL & FREE SWIM IN OUR 3 HEATED POOLS!	FISHING!	BOATING!
GYMNASTICS & TRAMPOLINING!	ROCKWALL!	GAGA!
HORSEBACK RIDING!	POTTERY!	DANCE!
COOKING!	ARCHERY!	SCIENCE!
LASER TAG!	TENNIS!	CHEER!
BASKETBALL, BASEBALL & SOCCER ON REGULATION SIZE SPORTS FIELDS		
TAUGHT BY OUR PROFESSIONAL COACHES!		

**DIRECT AIR CONDITIONED BUSING
FROM YARDLEY TO CAMP!**

**Ask Us About Our
SPECIAL RATE FOR
CONGREGATION BETH EL MEMBERS!**

457 Stagecoach Road, Millstone, NJ 08510
609-259-1777 www.blackbearlake.com

ADVERTISE IN THE SHOFAR

Do you have a business or do you know someone who does? If you would like to place an ad in The Shofar contact: Barbara Schwartz at 215-493-1707 or email barbara@bethelyardley.org.



Cemetery Plots at King David Memorial Park

No one really expects the need of having to buy cemetery plots. It is a wonderful benefit of belonging to Congregation Beth El of Yardley. There is no better time to buy than the present time, before you have the need. We want to help you make the choice before the emotional time after a death.

Many funeral directors encourage the pre-need arrangements of all of the aspects of the funeral, burial, and monuments. The Cemetery Committee can offer you the time to select a plot at the cemetery or just by reviewing our plot maps and photographs.

King David Memorial Park is located in Bensalem, PA. Beth El has over 400 plots in section R. Effective September 1, 2016 the Board of Directors approved a price increase to \$1800 per plot. This is far below the price for the general public making a request at King David. A Family Gravesite includes four plots and costs \$7200. Sign up now for the reduced prices. These charges are transacted with the synagogue only and you may not deal with King David or other congregants directly for the purchase or sale of any plots in Section R.

When a plot is paid in full the owner is granted the rights of sepulcher and these rights are shared with their heirs even if they are not members. Beth El does not sell plots to non-members of the congregation. In the event of an owner moving or not needing their plots, they may return their papers for a refund less 10% of the purchase price. The price of the plot does not include any services, openings, burial, vault, or monument charges.

For more information please call Michael Weinberg, Cemetery Committee Chairman, 215-321-1312.

Change in address or phone number?

Contact the office to let us know of any changes, 215 - 493 - 1707 x4 or email barbara@bethelyardley.org.

Shop at AmazonSmile

and Amazon will make a donation to:
Congregation Beth El

Simply Go to:

<https://smile.amazon.com/ch/23-1538398>



The Shofar

If you would like to receive a hard copy of *The Shofar* via regular U.S. mail, do not hesitate to request an issue to be delivered to your door.

Simply call the synagogue office,
215-493-1707 x4 or email
barbara@bethelyardley.org

We make every effort to ensure our
information is
accurate and up-to-date.


*MARCH 2019/Adar I & Adar II 5779

visit www.bethelyardley.org (*subject to change - always check website)

Sunday	Monday	Tuesday	Wednesday	Thursday	Friday	Saturday
					1 24 Adar I 7:00am Morning Minyan 5:33pm Candle Lighting 6:00pm Shabbat Evening Services	2 25 Adar I Parashat Vayekhel/ Shabbat Shekalim 8:45am - 9:25am Bible BaBoker - Torah Study with Rabbi Hoffman 9:30am Shabbat Morning Services with Bar Mitzvah of Jacob Kramer 6:34 pm Havdalah 7:00pm Film Festival
3 26 Adar I 8:00am Morning Minyan 8:00am Teacher Workshop	4 27 Adar I 7:00am Morning Minyan 2:00pm - 3:30 NAMI Meeting 7:30pm Evening Minyan 7:30pm Executive Committee Meeting	5 28 Adar I 7:00am Morning Minyan 4:00pm - 7:30pm Cook for a Friend 7:30pm Evening Minyan	6 29 Adar I 7:00am Morning Minyan 9:30am - 10:40am Jewish American History with Harriet Freidenreich 10:45am - Noon Torah & World Affairs with Rabbi Hoffman 4:30pm - 6:30pm FJLC (3rd - 7th) 6:30pm - 8:45pm HaMoadon Hebrew High 6:30pm Membership Committee Meeting 7:30pm Evening Minyan	7 30 Adar I Rosh Chodesh Adar II 7:00am Morning Minyan 7:30pm Evening Minyan 7:30pm Board Meeting – Meet with Rabbi Weiss	8 1 Adar II Rosh Chodesh Rabbinic Candidate Visit with Rabbi Raysh Weiss, PhD. see pg 5 7:00am Morning Minyan 3:00pm Kadima Shabbaton 5:40pm Candle Lighting 6:00pm Shabbat Evening Services with dinner; RSVP see pg 5	9 2 Adar II Parashat Pekudei 8:45am - 9:25am Bible BaBoker - Torah Study with Rabbi Weiss 9:30am Shabbat Morning Services with Rabbinic Candidate Rabbi Raysh Weiss, PhD. - see pg 5 10:00am Kadima Shabbat Services 10:00am - 12:00pm Mini Congo 6:41pm Havdalah 7:00pm Film Festival 7:15pm BUSY Mystery Bus Ride
10 3 Adar II Daylight Savings Time Rabbinic Candidate Visit 8:00am Morning Minyan 9:00am - 12:00pm FJLC (PreK - 7th) 11:00am PTO Board Meeting Pretzel Sale 10:15am Hazak Program The Tridels	11 4 Adar II 7:00am Morning Minyan 2:00pm - 3:30 NAMI Meeting 7:30pm Evening Minyan	12 5 Adar II 7:00am Morning Minyan 7:30pm Evening Minyan	13 6 Adar II 7:00am Morning Minyan 9:30am - 10:40am Jewish American History with Harriet Freidenreich 10:45am - Noon Torah & World Affairs with Rabbi Hoffman 4:30pm - 6:30pm FJLC (3rd - 7th) 6:30pm - 8:45pm HaMoadon Hebrew High 7:30pm Evening Minyan	14 7 Adar II 7:00am Morning Minyan 7:30pm Evening Minyan	15 8 Adar II 7:00am Morning Minyan 6:00pm Shabbat Evening Services with Shabbat B'Yachad 4th & 5th grade 6:48pm Candle Lighting	16 9 Adar II Parashat Vayikra/Shabbat Zachor 8:45am - 9:25am Bible BaBoker - Torah Study 9:30am Shabbat Morning Services with Bar Mitzvah Ethan Haimovitz 7:49pm Havdalah 8:15pm Film Festival 9:00pm Mizrach Region USY Prom @ Off-site
17 10 Adar II Purim Carnival Pick up Shalach Manot RSVP for Share Shabbat 8:00am Morning Minyan 9:00am - Noon FJLC (PreK - 7th)	18 11 Adar II 7:00am Morning Minyan 2:00pm - 3:30 NAMI Meeting 7:30pm Evening Minyan 7:30pm Board Meeting	19 12 Adar II 7:00am Morning Minyan 7:30pm Evening Minyan	20 13 Adar II Erev Purim 7:00am Morning Minyan 9:30am - 10:40am Jewish American History with Harriet Freidenreich 10:45am - Noon Torah & World Affairs with Rabbi Hoffman 4:30pm - 6:30pm FJLC (3rd - 7th) See front page of Shofar for full schedule of Purim events 6:30pm - 8:45pm HaMoadon Hebrew High	21 14 Adar II Purim 7:00am Morning Minyan & Megillah Reading 7:30pm Evening Minyan	22 15 Adar II RABBINIC CANDIDATE VISIT More information will follow 7:00am Morning Minyan 6:00pm Shabbat Evening Services 6:45pm Shabbat Evening Services with Shiru La'Adonai with dinner 6:55pm Candle Lighting	23 16 Adar II Parashat Tzav 8:45am - 9:25am Bible BaBoker - TBA 9:30am Shabbat Morning Services with Congregational Luncheon 7:56pm Havdalah 8:15pm Film Festival
24 17 Adar II RABBINIC CANDIDATE VISIT 8:00am Morning Minyan 9:00am - 12:00pm FJLC (PreK - 7th)	25 18 Adar II 7:00am Morning Minyan 7:30pm Evening Minyan	26 19 Adar II 7:00am Morning Minyan 7:30pm Evening Minyan	27 20 Adar II 7:00am Morning Minyan 9:30am - 10:40am Jewish American History with Harriet Freidenreich 10:45am - Noon Torah & World Affairs with Rabbi Hoffman 4:30pm - 6:30pm FJLC (3rd - 7th) 6:00pm - 8:45pm HaMoadon Dinner & Program at Tifereth Israel, Bensalem 7:30pm Evening Minyan	28 21 Adar II 7:00am Morning Minyan 7:30pm Evening Minyan	29 22 Adar II 7:00am Morning Minyan 6:00pm Shabbat Evening Services 6:45pm Share Shabbat Dinner at Member's homes - RSVP requested 7:02pm Candle Lighting	30 23 Adar II Parashat Shimini/ Shabbat Parah 8:45am - 9:25am Bible BaBoker - Torah Study with Rabbi Hoffman 9:30am Shabbat Morning Services 8:03pm Havdalah 8:30pm Film Festival
31 24 Adar II 8:00am Morning Minyan 9:00am - 12:00pm FJLC (PreK - 7th) 10:00am Women of Beth El - Membership Appreciation Brunch 2:00pm Chaverim & Kadima Escape Room						

***APRIL 2019/Adar II- Nisan 5779**

visit www.bethelyardley.org (*subject to change - always check website)

Sunday	Monday	Tuesday	Wednesday	Thursday	Friday	Saturday
	1 25 Adar II 7:00am Morning Minyan 2:00pm - 3:30 NAMI Meeting 7:30pm Evening Minyan 7:30pm Executive Committee Meeting	2 26 Adar II 7:00am Morning Minyan 4:00pm - 7:30pm Cook for a Friend 7:30pm Evening Minyan	3 27 Adar II 7:00am Morning Minyan 9:30am - 10:40am Jewish American History with Harriet Freidenreich 10:45am - noon Torah & World Affairs with Rabbi Hoffman 4:30pm - 6:30pm FJLC (3rd - 7th) 6:30pm - 8:45pm HaMoadon Hebrew High 7:30pm Evening Minyan	4 28 Adar II 7:00am Morning Minyan 7:30pm Evening Minyan 8:00pm Men's Club - Torah on Tap	5 29 Adar II 7:00 am Morning Minyan 6:00pm Shabbat Evening Services with Shabbat B'Yachad (PreK - 3rd grade) 7:09pm Candle Lighting	6 1 Nisan Parashat Tazria Rosh Chodesh Shabbat HaChodesh 8:45am - 9:25am Bible BaBoker with Rabbi Hoffman 9:30am Shabbat Morning Services 8:10pm Havdalah 8:30pm Film Festival
7 2 Nisan 8:00am Morning Minyan 9:00am - 12:00pm FJLC (PreK - 7th) 9:15am FJLC Board Meeting 11:00am PTO Board Meeting	8 3 Nisan 7:00am Morning Minyan 2:00pm - 3:30 NAMI Meeting 7:30pm Evening Minyan	9 4 Nisan 7:00am Morning Minyan 7:30pm Evening Minyan	10 5 Nisan 7:00am Morning Minyan 9:30am - 10:40am Jewish American History with Harriet Freidenreich 10:45am - noon Torah & World Affairs with Rabbi Hoffman 4:30pm - 6:30pm FJLC (3rd - 7th) 6:30pm - 8:45pm HaMoadon Hebrew High 7:30pm Evening Minyan	11 6 Nisan 7:00am Morning Minyan 7:30pm Evening Minyan	12 7 Nisan Mizrach Region USY Srping Convention - Offsite Chametz Due 7:00am Morning Minyan 6:00pm Candle Lighting 7:17pm Shabbat Evening Services	13 8 Nisan Parashat Metzora/ Shabbat HaGadol Mizrach Region USY Srping Convention - Offsite 8:45am - 9:25am Bible BaBoker with Rabbi Hoffman 9:30am Shabbat Morning Services with a Congregational Luncheon 10:00am - 12:00pm B'nai Mitzvah University (BMU) & Mini Congo 8:18pm Havdalah
14 9 Nisan Mizrach Region USY Srping Convention - Offsite 8:00am Morning Minyan 9:00am - 12:00pm FJLC FJLC Passover Program	15 10 Nisan 7:00am Morning Minyan 2:00pm - 3:30 NAMI Meeting 7:30pm Evening Minyan 7:30pm Board Meeting	16 11 Nisan 7:00am Morning Minyan 7:30pm Evening Minyan	17 12 Nisan 7:00am Morning Minyan 9:30am - 10:40am Jewish American History with Harriet Freidenreich -Last Class 10:45am - noon Torah & World Affairs with Rabbi Hoffman - Last Class 4:30pm - 6:30pm FJLC (3rd - 7th) 6:00pm - 8:45pm HaMoadon Hebrew High 7:30pm Evening Minyan	18 13 Nisan Office closes at Noon 7:00am Morning Minyan 7:30pm Evening Minyan	19 14 Nisan Passover Erev Pesach - 1st Seder Office Closed 7:00am Morning Minyan & Siyyum Bechorim 7:24pm Candle Lighting No Shabbat Evening Services	20 15 Nisan Passover begins Pesach I - 2nd Seder No Bible BaBoker 9:30am Shabbat Morning Services with Yizkor Service 8:25pm Havdalah
21 16 Nisan Passover/Pesach II NO FJLC 9:30am Passover Services 8:26pm Havdalah	22 17 Nisan Passover Pesach III (CH"M) Office Closes at noon 7:00am Morning Minyan 7:30pm Evening Minyan	23 18 Nisan Passover Pesach IV (CH"M) Office Closes at noon 7:00am Morning Minyan 7:30pm Evening Minyan	24 19 Nisan Passover Pesach V (CH"M) Office Closes at noon 7:00am Morning Minyan 7:30pm Evening Minyan	25 20 Nisan Passover Pesach VI (CH"M) Office Closes at noon 7:00am Morning Minyan 6:00pm Passover Evening Services 7:30pm Candle Lighting	26 21 Nisan Passover Pesach VI (CH"M) Office Closed 9:30am Passover Services 7:31pm Candle Lighting 6:00pm Shabbat Evening Services	27 22 Nisan 8:45am - 9:25am Bible BaBoker with Rabbi Hoffman 9:30am Shabbat Morning Services with Yizkor 8:32pm Havdalah
28 23 Nisan 8:00am Morning Minyan 9:00am - 12:00pm FJLC (PreK - 7th) 2:00am - 4:00pm Author Visit - Janet Benton	29 24 Nisan 7:00am Morning Minyan 7:30pm Evening Minyan	30 25 Nisan 7:00am Morning Minyan 7:30pm Evening Minyan				

Thank You For These Generous Donations

Building Fund

In Honor of:

Birth of Kathy Wachtenheim's grandson

Aleen & Bill Barisa

Bonnie Schachter's birthday

Robin & Derek Cohen

Jordyn Flager's Bat Mitzvah

Tina Leifer-Rettig & Michael Rettig

In Memory of:

Gloria Feld, mother of Mona Jaffe

Shelley & Arnie Rosenberg

Steven Klein, companion of Leslie Skolnick

Shelley & Arnie Rosenberg

Bernie Strassberg

Robin & Derek Cohen

Stuart Berkman

Elaine & Len Cantor

Rose & Michael Koretsky's dog, Coco

Mindy & Rick Albuck

Allen Aisenstein

Phyllis & Shelly Forman

Freda David, mother of Eva Samachson

Sherry & Randy Flager

Elaine Figarotta, mother of David Figarotta

Sherry & Randy Flager

Teddy Diamond, mother of Marcy Garb

Trudie Solarz

Monica Schwartz

Cook for a Friend Fund

In Memory of:

Freda David

Deb & Dan Wachspress

Elaine Figarotta

Deb & Dan Wachspress

Shelly Szwalbenest's father

Deb & Dan Wachspress

Eleanor Liss

Elyse Bernstein

Eric J. Marinoff College Outreach Fund

In Appreciation of:

**Sid Moszer in appreciation of all he does
for the Jewish Community**

Janet & Norman Marinoff

For the Yahrzeit of Eric Marinoff

Janet & Norman Marinoff

Jacob Marinoff

Janet & Norman Marinoff

In Honor of:

Maya Young's Bat Mitzvah

Tina Leifer Rettig & Michael Rettig

Marilyn Stein's 90th birthday

Janet & Norman Marinoff

Margie & Jack Wellerstein

Pam & Brian Saltzmann's marriage

Tina Leifer Rettig & Michael Rettig

In Memory of:

Eleanor Liss

Kasia & Adam Weitz

Mallory & Adam Flager

Michelle & Alan Flash

Arlene Spevak & Alan Weisgold

Allen & Marilyn Stein

Barbara Fineman

Shelley & Ben Szwalbenest

Bernice Brenner

Marjorie Chertok & Bernie Katz

Carol Sharp

Charles Presser

Charlotte Lacks

Charlotte Kolson

Debbie, Steve, Brittany & Josh Lubin

Deborah & Gustav Witzel

Denah Heller

Gloria & Ed Mittleman

Barbara & Edgar Einhorn

Elyse Bernstein

Metter & Company

Eric J. Marinoff College Outreach Fund

(continued)

In Memory of:

Eleanor Liss

Eve-Lynn Miller

Corinne & Frank Santisi

Grace Jacob

Charlotte & Harold Denenberg

Marcia & Harry Kratz

Eva & Harvey Samachson

Margie & Jack Wellerstein

Donna Wolfson & Jack Silverstein

Jacqueline & Jack Porter

Jeff & Becky Miller

Jeff & Melissa Freedman

Andrea & John Woodring

Robin & Jordan Lieberman

Karen & Marc Shoemaker

Ken & Linda Greenberg

Michelle & Lee Schachter

Lenny, Harriet Toby Handler

Lenora Perlmutter

Susan & Lewis Knopfmacher

Marjorie & David Lissy

Joy & Marc Finkel

Marci & Steven Laderman

Marie & Clayton Belcher

Barbara & Mark Melmed

Meryl & Allan Lewin

Rose & Michael Koretsky

Michelle, Michael & Jeanette Weinberg

Marian & Milt Berger

Herbert Strauss & Family

The Segal Family

Linda & Noah Goldman

Mindy & Rick Albuck

Diane Axelrod & Robert Lindenbaum

Robyn, Lee, Marc & Elyse Hessberger

Sara Pollock

Sherry & Randy Flager

Deborah Charatan & Steven Holm

Thank You For These Generous Donations

Eric J. Marinoff College Outreach Fund

(continued)

Carol Benderson-Lichter & Stuart Lichter

Sylvia Goldberg

Tina Leifer Rettig & Michael Rettig

Vivienne Wemple

William Kanefsky

Phillip Needleman

Barbara Fineman

Allen Aisenstein

Barbara Fineman

Father of Shelley Szwalbenest

Barbara Fineman

Margie & Jack Wellerstein

Linda & Noah Goldman

Janet & Norman Marinoff

Stuart Berkman, brother of Elliot Berkman

Margie & Jack Wellerstein

Sara Pollock

Ian Sayre

Nan Jurman

Freda David

Tina Leifer-Rettig & Michael Rettig

Norton Borochnan

Sara Pollock

Fierverker Education Fund

In Honor of:

Eva & Sid Moszer

Cheryl & Arthur Goldberg

In Memory of:

Freda David

Caroline & Art Rogoff

Joan Rubin-Kritz & Barry Kritz

Gloria & Ed Mittleman

Faye Laveson

Barbara & Mark Melmed

Rose & Michael Koretsky

Carol Benderson-Lichter & Stuart Lichter

Eileen & Philip Weinstein

Rosalyn Kleiman

Sara Pollock

Fierverker Education Fund

(continued)

In Memory of:

Father of Shelley Szwalbenest

Gloria & Ed Mittleman

Eleanor Liss

Faye Laveson

Norton Borochnan

Selma Spivack

Stuart Berkman, brother of Elliot Berkman

Carol Benderson-Lichter & Stuart Lichter

Morning Minyan Fund

In Appreciation of:

Phil Freidenreich leading services at shiva for Freda David, mother of Eva Samachson

Eva Samachson

Cantor Florence Friedman Hurwitz & Loren Hurwitz reading Torah on Monday, 12/17/18

Morning Minyan

In Memory of:

Stuart Berkman

Joan Zuckerman

Judy Nussbaum & Marvin Gelblat

Morning minyan

Shelley Szwalbenest's father

Karen & Mark Shoemaker

Bronia Gersten

Stewart Mash

Oring Family Hesed Fund

In Appreciation of:

Michael Jelen's kindness and helpfulness

Rita Pruzan & Barry Troll

In Honor of:

Michael Yeager's conversion

Judy Nussbaum & Marvin Gelblat

In Memory of:

Stuart Berkman

Charlotte & Harold Denenberg

Thank You For These Generous Donations

Perez Youth Scholarship Fund

Speedy Recovery

Bonnie Abrams

Debbie & Ken Duchin

Gloria & Ed Mittleman

Rabbi's Discretionary Fund

In Memory of:

Freda David

Sylvia Goldberg

Rhoda & Morris Volk Camp Ramah

Scholarship Fund

In Honor of:

Bonnie Schachter's 50th birthday

Liz Ravitch & Bari Frydman

In Memory of:

Norton Borocharner

Caren & Nat Bosc

**MAKE YOUR
CONTRIBUTIONS TO
CONGREGATION
BETH EL ONLINE!!**

**Recognize your loved
ones & friends for
simchas, speedy
recoveries, and
condolences by
donating to one of
Beth El's many funds.**

Visit our website:

**BethElYardley.org and
click *DONATE* on
the menu bar**

*Thank
You*

We would like to express our sincere gratitude to our Beth El family for all the kindness and support and generous contributions made in memory of our mother Eleanor Liss. We appreciate your making sure there were minyans at our home and at the shul. Our mother was a wonderful example and inspiration to us. We thank you for honoring her memory and appreciate all your thoughtfulness.

--Janet and Norman Marinoff and Family



Do a Mitzvah! Dedicate a Book!

HONOR SOMEONE YOU KNOW BY DONATING A
BOOK TO THE BETH EL LIBRARY THROUGH THE FIERVERKER JEWISH
LEARNING COMMUNITY PTO

Donate a book for any and all occasions. Birthdays, B'nai Mitzvah, anniversaries and more! All money donated to this fund benefits the advancement of Jewish education for our Fierverker Jewish Learning Community, Pre-Kindergarten through 7th grades. In exchange for your donation, a special book plate will be inserted in one of our library books and shared with the community.

Suggested donation \$18

Any support is appreciated as it will go towards
educational programs for PreK to 7th graders.

Personalize your dedication and make a payment
by going to the following link:

<http://www.bethelyardley.org/PTOdonate>



Thank you for your generosity.

DONATE

Siddur Lev Shalem*For Shabbat & Festivals*

The Siddur Lev Shalem has all the prayers and psalms with commentary, spiritual reflections and historical background for some of the readings. The Siddur Lev Shalem can be used for personal.

Honor or remember important people, milestones and celebrations by donating the Lev Shalem Siddurim or the Mahzor Lev Shalem to

Congregation Beth El

DONATE

Mahzor Lev Shalem*Rosh Hashanah & Yom Kippur*

The Mahzor Lev Shalem's running commentary presents both a historical overview and insight into the meaning of prayers. Many readings focus on spiritual issues and tikkun olam, as well as reflections, stories and quotes.

Please consider making a donation to honor or remember someone special in your life. Submit this form to the office.

SIDDUR LEV SHALEM/MAHZOR LEV SHALEM DONATION**Please print legibly:**

Donor's name: _____ (how you would want your name to appear on the bookplate)

Phone# _____ Email address: _____

I wish to donate: (check one)

_____ **SIDDUR LEV SHALEM** circle one: **HOME** or **SYNAGOGUE**

_____ # of Siddur x \$54.00 (each) = \$ _____

_____ **MAHZOR LEV SHALEM** circle one: **HOME** or **SYNAGOGUE**

_____ # of Mahzor Lev Shalem x \$54.00 (each) = \$ _____

***BOOK PLATE DEDICATION INFORMATION:**

In memory of (name) _____

In honor of (name/occasion for honor) _____

*Please use a separate piece of paper for additional book plate dedications.

Please mail your check with this form to: Congregation Beth El 375 Stony Hill Road Yardley, PA 19067
ATTN: Siddur or Mahzor Lev Shalem



CONGREGATION BETH EL GIFT OPPORTUNITIES

Tree of Life Honor a birthday, anniversary, wedding, Bar/Bat Mitzvah or any other happy occasion with an engraved leaf on our tree of life for \$180 or a boulder for \$750.

Donation Cards Our donation cards are a wonderful way to recognize important life-cycle events, extend wishes for speedy recovery or show your appreciation for someone's kindness and helps fulfill the mitzvah of tzedakah. There are two different cards to choose from - a beautiful Menorah card (\$7) and a colorful picture of three of our Torah (\$18).

Your gift can also be designated to one of the following funds:

Adult Education Fund	Morning Minyan Fund
Building Fund	Oring Family Hesed Fund
Cook for a Friend Project Fund	Perez Youth Scholarship Fund for Jewish camps & USY Programs
Eric J. Marinoff College Outreach Fund	Fierverker Education Fund
Golda Meir Religious Books & Articles Fund	Rabbi's Discretionary Fund
	The Rhoda & Morris Volk Camp Ramah Scholarship Fund

Book Dedications There are also opportunities to have a bookplate placed on the back of the front cover of a Siddur (Prayer Book), or Machzor (High Holiday Prayer Book) - any time someone opens the book, they will learn of your donation: Prayer Book: \$54 High Holiday Machzor: \$54

Yahrzeit Plaques Among the customs to help us with loss and bereavement is the commemoration of a loved one on a Yahrzeit plaque. These plaques, which are affixed to a special memorial board in our Chapel, are an expression of love and devotion. The plaque will be mounted on our Yahrzeit board in perpetuity. Each year you will receive a notice of the date of the yahrzeit, it will be announced during Shabbat services, and the plaque will be lit in memory of your loved one for a full month. The cost is \$750 for members and \$900 for non-members. Contact the office to receive a form.

Cemetery Plots - Beth El owns cemetery plots at King David Memorial Park in Bensalem. Call the office for further details and pricing information or contact Michael Weinberg 215-321-1312.

CONGREGATION BETH EL DONATION FORM

Enclosed is my gift of \$_____ (Menorah card \$7 - \$17, Torah card \$18+)

- | | |
|---------------------------------------------------------------------|--------------------------------------------------------------------------|
| <input type="checkbox"/> Building Fund | <input type="checkbox"/> Cook for a Friend Project Fund |
| <input type="checkbox"/> Eric J. Marinoff College Outreach Fund | <input type="checkbox"/> Fierverker Education Fund |
| <input type="checkbox"/> Golda Meir Religious Books & Articles Fund | <input type="checkbox"/> Adult Education Fund |
| <input type="checkbox"/> High Holiday Machzor/Prayer book (\$54) | <input type="checkbox"/> Morning Minyan Fund |
| <input type="checkbox"/> Oring Family Hesed Fund | <input type="checkbox"/> Perez Youth Scholarship Fund |
| <input type="checkbox"/> Rabbi's Discretionary Fund | <input type="checkbox"/> Rhoda & Morris Volk Camp Ramah Scholarship Fund |

Recipient _____ Occasion _____

Recipient Address _____

Donor Name (s) _____

Donor Address _____

I would like more information on:

- ☐ Tree of Life
 ☐ Yahrzeit Plaques
 ☐ Cemetery Plots
 ☐ Other Ways I Can Give



Congregation Beth El
375 Stony Hill Road
Yardley, PA 19067
215 - 493 - 1707

Shofar Editorial Committee

Charlotte Denenberg, Barbara Fineman, Sara Pollock,
Bill Barisa and Milt Berger

Main Office215-493-1707
E-mail Office@BethElYardley.org
FJLC..... x2
Gift Shop..... x6

Professional Staff

Scott A. Hoffman, Rabbi.....x5
Karen Lewin, Education & Youth Director..... x3
Barbara Schwartz, Synagogue Administrator.....x4
Marian Berger, Bookkeeper x4

Congregation Beth El Officers

Laurence H. Schachter.....President
Rob Lightman.....1st Vice President
Liz Ravitch.....2nd Vice President
Lee Kirsh.....3rd Vice President
Gretchen Merchiere.....Vice President of Religious
School
Beth Sadoff Secretary
Steve Lubin Treasurer
