

The Shofar



July/August 2023

The Bi-Monthly Publication of Congregation Beth El of Bucks County

Tamuz/Av/Elul 5783

Tisha B'Av Services

Tisha B'Av—the 9th day of the month of Av is a fast day and a day of mourning that commemorates the many tragedies that have befallen the Jewish people, many of which have occurred on the ninth of Av. These include the destruction of the first and second Temples, as well as the expulsion of the Jews from Spain in 1492 and from England in 1290.

Communal
Tisha B'Av services are
slated to be hosted by
Congregation
Tifereth Israel

Wednesday, July 26
Program at 8:00pm
with Maariv/Eicha
at 8:45pm

-in person & virtual
link will be provided by TI

Services at
Congregation
Beth El

Thursday, July 27

7:00am

Morning Minyan

1:45pm
Mincha

-in person &
virtual Beth El

Visit www.bethelyardley.org to RSVP and to join virtually.



**Congregation
Beth El**

375 Stony Hill Road • Yardley, PA 19067

215-493-1707 • www.BethElYardley.org

Our Office Staff & Professionals

215-493-1707

Rabbi: David A. Cantor, dcantor@bethelyardley.org

Education Director: Kedma Cantor, kcantor@bethelyardley.org

Synagogue Administrator: Barbara Schwartz, barbara@bethelyardley.org

Office Assistant: Michele Krane, mkrane@bethelyardley.org

Executive Committee Members 2023-2024

executivecommittee@bethelyardley.org

Presidents: Ian Schachter & Mark Fried, president@bethelyardley.org

1st Vice President: Rich Oring

2nd Vice President: Andrew Braverman

3rd Vice President: Thomas Moore

Vice President of Education: Helene Geiger

Secretary: Steve Young

Treasurer: Robyn Hessberger

Board of Directors Members - term ending 2024:

board@bethelyardley.org

Penny Bardfeld Meryl Broadbent Eric Fishbein

Jenifer Goldstein Shelli Krevitz Abby Weber

Board of Directors Members - term ending 2025:

Joy Cooper* Cara Davis* Adam Flager* Ken Kaissar

Karen Lewin* Beth Sadoff Dan Wachspress

Past Presidents:

Elizabeth Ravitch, Laurence H. Schachter, Leon Weissman

Hazak Co-Presidents: Charlotte Denenberg & Michelle Flash

hazak@bethelyardley.org

Men's Club President: Matt Julin

mensclub@bethelyardley.org

Sisterhood Co-Presidents: Rachael Oring & Phyllis Schachter

sisterhood@bethelyardley.org

Galilee Proceeds Management Board (GPMB):

Derek Cohen Phil Freidenreich Randy Flager **

Michael Koretsky** Rich Oring**

President Appointee:

TBD

*denotes new board member

**GPMB Members up for re-election this year.

Look What's Happening at Congregation Beth El

Message from the President.....	3
Message from the Rabbi.....	4
Message from the Education Director.....	5
Summer Meet Up.....	6
Spotlight on B'nai Mitzvah Students.....	7
Holiday Programming Committee.....	8
Kiddush Krew.....	8
Membership Committee.....	9 - 11
Adult Education.....	12 - 15
Bingo.....	16
Sisterhood.....	17 - 19
Social Action.....	20
Beth El Community Cares.....	21 - 22
Advertisements.....	23 - 27
Donations.....	28 - 29
PTO Book Donations.....	31
Prayer book donations	32
Beth El Gift Opportunities.....	33
Calendars.....	34 - 35

Sumer Office Hours

Monday, Wednesday & Thursday: 8:30am - 3:00pm

Tuesday - office working remotely: 8:30am - 3:00pm

Friday: 8:30am - 12:00pm

Service Times

Saturdays: 9:30am

Monday - Friday

Morning Minyan

7:00am

(in person only)

Sunday - Thursday

Evening Minyan

7:30pm (virtual only)

Sundays & Secular Holidays

Morning Minyan 8:00am

(in person only)

Check out our website

www.bethelyardley.org

Find out more about our programming, events, and classes and RSVP online.



Reset the mi she'beirahk list

(list of our loved ones in need of healing)

January 1 April 1 October 1 July 1

The list will be cleared and compiled anew to reflect more recent changes.

Updates to the mi she' beirahk list may be updated weekly with your loved one's names by visiting www.bethelyardley.org. Members only: log in to member portal.

The Shofar - Congregation Beth El's Newsletter Issues

July/August, September/October, November/ December,

January/February, March/April, May/June

Deadlines for the Shofar are on the 16th of the month **prior** to the new edition coming out; except if it falls on Shabbat or a Jewish holiday.



Mark Fried

Mark, his wife Alexis and their two children, Carly and Steven, have been members of Beth El since 2001. Both Carly and Steven attended The Fierverker Jewish Learning Community (FJLC) and had their B'nai Mitzvah at Beth El.

Mark has served on the Board for over a decade. Previously he served a 2 year term as President of Beth El in 2013 - 2015 and President of Men's Club 2006 - 2009 and was honored as The Jewish Federation of Men's Club Man of the Year award in 2008.

Mark is a financial author, speaker and partner in Merit Financial Advisors. He received a B.S. from Columbia University and has a Masters Degree in Public Policy and Finance from the University of Pennsylvania.

"I look forward to working with my Co-President, Ian Schachter for the next two years as we continue to build on the past, embrace the present and prepare for a bright and exciting future here at Beth El."



Ian Schachter

Ian, Bonnie, and their two children, Jason and Aaron, have been members at Beth El since 2009. Ian has served on the Board of Directors as Vice President of Education, President of Men's Club, and currently Co-President of the congregation.

Ian has a lifelong commitment to Camp Ramah in the Poconos, a conservative Jewish summer camp, as both a camper and current staff member, spending well over 100 Shabbatot at camp.

His family has been delivering and packing boxes for families in need with JRA, Jewish Relief Agency, for over 8 years. Ian is committed to growing membership and community involvement at Congregation Beth El.

Contact the Co-Presidents at:
president@bethelyardley.org



I find myself compelled to communicate about kindness. Kindness should be a near-universal value in this country, as something on which both the Torah and the New Testament agree:

(Leviticus 19:17 - 18)

“You shall not hate your kinsfolk in your heart. Reprove your kinsman but incur no guilt because of him. You shall not take vengeance or bear a grudge against your countrymen. **Love your fellow as yourself: I am the LORD.**”

(Mark 12:29 - 31)

“Jesus answered, “The most important is, ‘Hear, O Israel: The Lord our God, the Lord is one. And you shall love the Lord your God with all your heart and with all your soul and with all your mind and with all your strength.’ The second is this: ‘**You shall love your neighbor as yourself.**’ There is no other commandment greater than these.”

One would think that treating others the way we would treat ourselves would create a world of well-treated people, but this does not seem to be the case. Either many people prefer to be treated unkindly, or the Biblical message is not being taken to heart.

I struggle with what my responsibilities might be to correct this state of affairs. As we read in the Book of Esther, “Mordecai had this message delivered to Esther: ‘Do not imagine that you, of all the Jews, will escape with your life by being in the king’s palace. On the contrary, **if you keep silent in this crisis, relief and deliverance will come to the Jews from another quarter**, while you and your father’s house will perish. And who knows, **perhaps you have attained to royal position for just such a crisis.**’” (Esther 4:13–14)

I have not attained royal status – I’m not a nationally-known person of influence – but I am beginning to despair of relief and deliverance ever arriving from any source: where is the national dialogue on kindness? And so I am stepping up on my soapbox, my bi-monthly article to our congregation, in the hopes that my message can begin, perhaps, to radiate out: of everything you hear ask, “is this kind?” And if it isn’t, stand up and say something.

In writing on *shemirat ha-lashon* – the guarding of one’s tongue – Rabbi Joseph Telushkin suggests we follow this teaching first articulated by the poet, Rumi (Jalāl al-Dīn Muḥammad Rūmī, Persia, 1207-1273):

Before you speak, let your words pass through three gates

At the first gate, ask yourself, “Is it true?”

At the second gate ask, “Is it necessary?”

At the third gate ask, “Is it kind?”

My pastoral exhortation is that we try to remember to put these gates in place, and hold others accountable to do the same. Treat others as you would treat yourself. When speaking, ask yourself if your words are truthful, necessary, and kind.



FIERVERKER JEWISH LEARNING CENTER 2022-2023

We are fireworks  FJLC



Kedma Cantor

Kedma Cantor
Education Director
kcantor@bethelyardley.org



MORNINGS AT THE MOVIES



Join Kedma for

EVERYONE IS INVITED

\$2 MOVIES

at United artists/ Regal movie theater at Oxford Valley Mall

403 Middletown Blvd, Langhorne, PA 19047

TUES JULY 11

Sonic the HedgeHog 2

TUES AUG 15

How to Train Your Dragon 4



10 AM



**meet 9:45 at
the theater**



As Hiccup fulfills his dream of creating a peaceful dragon utopia, Toothless' discovery of a mate draws the Night Fury away. When danger mounts at home and Hiccup's reign as village chief is tested, both dragon and rider must make impossible decisions to save their kind.

Parental Guidance for violence, suspense and peril.

Robotnik returns, this time with a new partner, Knuckles, in search for an emerald that has the power to destroy civilizations. Sonic teams up with his own sidekick, Tails, and together they embark on a globe-trotting journey to find the emerald before it falls into the wrong hands.

Parental guidance some violence, action, rude humor, and mild language.

Ari Freeman: Thursday, August 17, 2023



Ari will be entering the 8th grade at Abrams Hebrew Academy in the fall in which he is a beloved student and a very good friend to others. Ari enjoys music, sport activities, creative writing, and the art of editing. He loves swimming, taking relaxing walks, and chilling out with YouTube.

Ari is surrounded by family who absolutely adore him, and he makes them proud every single day. His parents: Remi and Chris Freeman, his older brother Jace, his Aunt Marni and Uncle Bill, Aunt Lisa, his loving Grandparents Bubby Sherry and Zayda Randy, and his adoring great grandmother Bubby June. Even though this love is very real and mutual, his greatest love and very best friend is his dog, Lucy. We all are very excited to be celebrating Ari's Bar Mitzvah and we know that Poppy will be celebrating with us, looking down and smiling brightly saying, "Let's rock and roll!"

Logan Oring: Saturday, August 19, 2023



Meet Logan, a bright, compassionate young man preparing to celebrate his Bar Mitzvah. He has teamed up with the Little Bricks Charity for his Bar Mitzvah project to collect unopened Lego sets to distribute to children staying at Children's Hospitals throughout the country.

Visit <https://www.littlebrickscharity.org/logansbarmitzvah> to make a donation.

Aside from his charitable work, Logan is passionate about Jewish studies and enjoys exploring his faith and heritage alongside the Beth El community. When he's not busy with that, Logan can be found researching and building his collection of Nike sneakers.

Logan is excited to celebrate his Bar Mitzvah and embrace the new responsibilities of this milestone while continuing his Jewish education.

Brandon Drucker: Saturday, August 26, 2023



Brandon is a creative young man who is passionate about many different subjects. These include engineering, architecture, biology and art. Brandon will be entering 8th grade at The Pennington School this fall. He participated in the Pennington Middle School Band and was recently invited to join the Honors Jazz Band. Brandon enjoys restoring and collecting old technology, spending time with family, and playing tennis, golf, and video games with friends.

For Brandon's Bar Mitzvah project he created the first Middle School Chess Club. This sparked a new sense of interest in the game throughout the middle school community. Brandon saw a need in the community and helped make it a reality with his creative way of teaching kids, raising funds for the chess tournament, and working with his peers.

Brandon would love to thank his family and friends who are here today for the celebration, as well as the Beth El community itself for helping him learn and grow. Special thanks to my parents, Rabbi Cantor, Phyllis Schachter, my FJLC teachers, and my dog "Manny" Drucker.

Holiday Programming Committee

We gathered on Erev Shavuot for a *Night of Learning & Cheesecake*. Close to 40 of us attended services and then enjoyed dessert and camaraderie. Our evening culminated with thought provoking learning. *Yasher Koach* to Hannah Greenberg, Kedma Cantor and Rabbi Cantor for being our wonderful presenters!

The Holiday Programming Committee is working on the calendar for the coming year. Think about joining our committee and sharing your ideas. We always need extra help in the kitchen too. Most of all, we hope you can attend many of our Beth El holiday events!

Sandie Hirsch & Shelli Krevitz
Holiday Programming Committee Chairs
holidayprogramming@bethelyardley.org



Kiddush Krew Committee



The Kiddush Krew is a group of volunteers who get together once a month to prepare the Shabbat luncheons that follow services. It is a great way to get to know your fellow members. No kitchen skills needed. Interested in volunteering, contact: barbara@bethelyardley.org.

Visit www.bethelyardley.org; click on Calendar. Use the filter for Shabbat Lunches on the calendar page.

Membership Committee

Membership Incentive Program - Help increase our membership!



As a member, if you bring in any new members to Congregation Beth El, you will receive \$118 credit on your account. This money can be applied to your membership dues and/or any programs and events where there will be a cost. Please be sure to let the office know which new members you encouraged to join. Thank you in advance.

TELL YOUR FRIENDS!
TOP 10 REASONS TO JOIN BETH EL

- 1. WARM & INVITING**
- 2. FAMILY ORIENTED**
- 3. HEBREW SCHOOL FOR THE CHILDREN**
- 4. WONDERFUL NEW RABBI & REBBITZEN**
- 5. MORNING/EVENING MINYAN**
- 6. FABULOUS LOCATION**
- 7. L'DOR V'DOR—GENERATIONS OF MEMBERS**
- 8. BEAUTIFUL BUILDING**
- 9. SOCIAL EVENTS & ACTIVITIES**
- 10. THE BAR IS ALWAYS OPEN!**

If you would like to add to our list of Top 10,
email membership@bethelyardley.org.



**Congregation
Beth El**

375 Stony Hill Road • Yardley, PA 19067
215-493-1707 • www.BethElYardley.org

We want you... to get engaged. Volunteer opportunities!

Do a mitzvah. Volunteering is good for you and good for Congregation Beth El.

Join fellow congregation members in continuing to create a vibrant community. Volunteer once, twice, or more. We appreciate any time you can give us. Fill out this form or visit www.bethelyardley.org for an online form.

Mail to: Congregation Beth El 375 Stony Hill Road Yardley, PA 19067

Name: _____ Email: _____

Cell#: _____ My special interests/hobbies are: _____

Place a check mark below.	Volunteer opportunities
	Adult Education Committee – Assist in planning classes and/or teach a class; assist with the adult & children's library.
	Chesed Community – Assist members in need. Drive members to appointments or Beth El programs/services, pick up medicines, grocery items, make meals, etc.
	Cook For a Friend – Meets once a month on Tuesdays; make meals for seniors.
	Finance Committee - Oversee the Congregation's finances in conjunction with the treasurer
	Fundraising – Help plan activities (ex. Bingo, Gala Dinner) to raise funds for the congregation.
	Gardening – Do you have a green thumb? Help maintain our Beth El garden.
	Greeter : Welcome guests at Friday evening or Saturday morning services.
	Hazak – Join fellow 65+ members for programming and events.
	Holiday Programming - Assist in planning community-wide holiday programming.
	Inclusion Group : Join fellow members in making Beth El inclusive to various populations.
	Israel Committee – Join fellow members in organizing and promoting programs to support Israel.
	Kiddush Krew – Assist with Shabbat luncheons.
	Membership – Plan and organize programs & events to engage prospective, new and current members; in-reach/out-reach opportunities; deliver membership bags to new members.
	Men's Club – Join fellow Beth El members for programming and events throughout the year.
	Minyan : Agree to attend morning or evening minyan on a given day.
	Parent Teacher Organization (PTO) – Get involved in school planning, activities & programming for our youth.
	Publicity – Help promote Beth El; post on social media and print outlets.
	Religious Activities Committee – Help shape the religious aspects of Beth El.
	Share Shabbat Dinner – Help recruit members to host/be guests at homes on Friday Nights.
	Shiru l'Adonai Musical Friday Shabbat Services – Do you sing? Play an instrument? Enjoy Music? Meets once a month on Friday evenings.
	Sisterhood - Join fellow Beth El members for programming and events throughout the year.
	Social Action – Assist the community at large; monthly donation collections, making meals, etc.
	<i>I/we have ideas to help shape the programs and events that happen at Congregation Beth El.</i>

Adult Education Summer Happenings

Join us for a casual summer program and some pre-High Holiday happenings in late August.

SUMMER FUN

Walking Tour of Princeton's Campus Sculpture Collection: **Sunday, July 16, 2:00pm**

Meet in front of Nassau Hall at Princeton University for a FREE outdoor walking tour of the main campus's sculpture collection, led by a docent from the Princeton Art Museum. Discover a variety of artworks by modern and contemporary sculptors, from Henry Moore to Louise Nevelson.



NOTE: the route is relatively flat and stair-free. Tour lasts approximately one hour, and is open to the general public (not just Beth EI). ALL ARE WELCOME TO ATTEND.

RSVP requested but not required.

Need a ride? Can you offer a ride? Visit www.bethelyardley.org

Questions? Contact adulted@bethelyardley.org. Princeton campus maps and parking information can be found at: <https://transportation.princeton.edu/maps>.

The Good Place for the High Holidays: Jewish Discussions and Watch Party **Wednesday Evenings at Beth EI** **August 30 & September 6** **7:00pm - 8:30pm**

Elul is the month on the Jewish calendar that leads into the High Holidays. It's a time to transition gradually from summer lightheartedness, and start to spiritually prepare ourselves for Rosh Hashanah and Yom Kippur.

That's exactly what we'll be doing each Wednesday evening on August 30 and September 6. We'll start each session by watching a lighthearted show together, take a short break for minyan, then regroup for a deeper dive into the serious ethical and religious themes to be found in the show.



BE ON THE LOOKOUT!

Watch your weekly emails and the Beth EI website for information on upcoming fall Adult Ed offerings, including a special book and author event in October, thought-provoking course offerings, new Book Club picks, and Book Nosh discussions. We look forward to seeing you!

If you have ideas for programs, are good at social media, have art, photography or writing skills, or like to plan events...then we'd like to hear from you! All volunteers warmly welcomed. Please contact adulted@bethelyardley.org.

PREVIEW Adult Ed Coming Attractions for 5784!

Congregation Beth El's Adult Education Committee is putting together a full season of learning opportunities for the New Year.

Here's just a sampling of what's in store:

***Author Event and Book Signing**

Beth El will host Lynn Levin, author of, "*House Parties*", on Sunday Oct. 22, 1:00pm - 3:00pm. Book signing to follow.



***Wednesday morning learning series with Rabbi Cantor**

"The Jewish Political Tradition." Oct. 18 through Dec. 20, 10:00am - 11:00am. Discussion to follow.

***Beth El Book Club**

Nov. 12, Jan. 7, Mar. 3, Apr. 14, June 9, Sunday mornings, 10:30am - 12:00pm.

***Culture and Cream Cheese (formerly Book Nosh)**

Schmooze about Jewish books and culture. Sunday mornings, 10:30am - 12:00pm, Oct. 29, Dec. 3, Feb. 4, May 5.



***Theater Matinee Trip**

Bristol Riverside Theater's production of "Raisin in the Sun," Feb. 18 Sunday matinee, 3:00pm.

***Erev Shavuoth Night of Learning.**

Enjoy a short evening service, then join professional and lay leaders for presentations on various topics. All with a side of cheesecake, of course! June 9, time TBD.

There's more programming in the works, so watch this space.
In the meantime, SAVE THESE DATES!!

Buy Tix Today for *Special Sneak Preview* of “Golda”



Beth El's movie fans will be flocking to AMC Neshaminy in Bensalem on **Wednesday, August 23 at 7:00pm** for the *Sneak Preview* of “Golda”, starring Helen Mirren as Golda Meir. The Sneak Preview showing on August 23 also includes a pre-recorded, post-film Q&A with Helen Mirren and film director Guy Nattiv. Seating for this Sneak Preview event is limited. Beth El has pre-purchased a block of tickets for the August 23 event. Tickets cost \$18/person. Don't miss out! Please act today to reserve your tickets through Beth El!

For more information or to purchase your tickets, visit www.bethelyardley.org.

***Golda* is a ticking-clock thriller set during the tense 19 days of the Yom Kippur War in 1973.**

ARCHIVES

Did you miss a program? No worries.

We have them recorded for you. Visit www.bethelyardley.org; click on the “Archives” tab or click on the “Learn” tab for the Adult Education Archives. Anything underlined is a link to a video. Enjoy!



We need your help!

If you have ideas for programs; are good at social media; have art, photography or writing skills; or like to plan events... then we'd like to hear from you! All volunteers warmly welcomed.

Please contact adulthood@bethelyardley.org.



Help Us Re-Boot Beth El's Library!

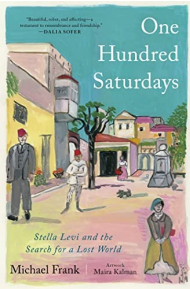
It isn't too late to join the committee of dedicated volunteers who are working to reboot our library.

Contact adulthood@bethelyardley.org for more information or to volunteer.

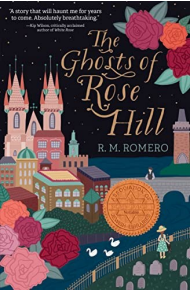


For the literary omnivore who likes to graze

Items Discussed at May 21, 2023 Book Nosh Meeting



One Hundred Saturdays, by Michael Frank. A charming, heart-warming story, as told by a nonagenarian lady, Stella Levi, recounting her life from growing up Jewish on the Island of Rhodes, surviving Auschwitz, and living a full life thereafter. One of Wall Street Journal's Ten Best Books of the Year; Winner of the National Jewish Book Awards for Holocaust Memoir and Sephardic Culture; Recipient of the Jewish Book Council's Natan Notable Book Award; Winner of the Sophie Brody Medal.



The Ghosts of Rose Hill, by R. M. Romero. This is a Young Adult novel that caught our reviewer's fancy. It tells the story of a young Jewish American girl who visits her aunt in Prague, discovers a forgotten Jewish cemetery and decides to clean it up during her stay. There are ghosts, and young love, and much sweetness. Might make a good present for that teenage girl in your life or possibly for the teenager at heart that still lurks inside all of us.



Rough Diamonds is a brand-new Netflix series (8 episodes) that follows the trials and tribulations of a Jewish Ultra-Orthodox family in Belgium's Antwerp Diamond Square Mile. One noteworthy aspect of this Israeli-Belgian coproduction is that the children in this Haredi community, while as observant as their fellow sectarians in Israel and the US, receive, in addition to their Talmud studies, a quality secular education that prepares them for life in the modern world. The show has received positive reviews, with Haaretz calling it a "gem." (We know it's a pun but it's also an accurate summary of the reviewer's views.)

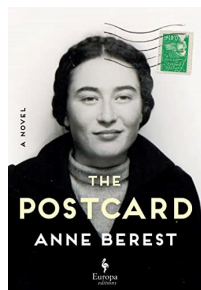


A Small Light is another brand-new, 8-episode miniseries, available on National Geographic, Hulu, and Disney+ streaming platforms. It's another take on the Anne Frank story, this one told from the viewpoint of Miep Gies, the Dutch woman who helped hide Otto Frank and his family from the Nazis. The series has received universal acclaim, getting a 92% audience score (100+ ratings) and a 100% reviewer rating (31 reviews) on Rotten Tomatoes. We have not yet seen it but it sounds like we should give it a look.

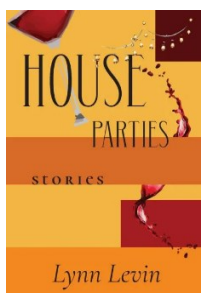


Ghosts of Beirut. When we say brand-new, we don't kid around. Season 1, Episode 1, of this 4-part thriller premiered on Showtime on May 19. It dramatizes the true story of the hunt by Mossad and CIA for Imad Mughniyeh, the founder of Lebanon's Islamic Jihad Organization and the chief of staff of Hezbollah. (Spoiler alert: Mughniyeh died in a bomb blast in Damascus on February 12, 2008).

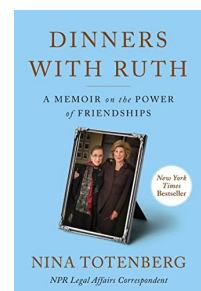
Book Nosh Continued



The Postcard, by Anne Berest. This novel was originally published in France in 2021. An English translation is now available. It recounts one woman's journey of discovery, triggered by an anonymous postcard, into her family history, which includes the murder of four of her ancestors in Auschwitz in 1942. In the course of her research, she not only reconnected with her Jewish roots but also discovered the deep-seated anti-Semitism woven into the fabric of French society, as exhibited during WWII and continuing to this day.



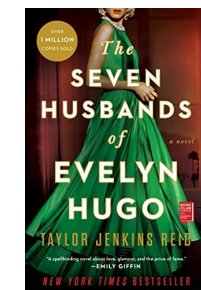
House Parties, by Lynn Levin, is a collection of enthralling short stories, many with a Jewish bent. The author, who taught creative writing at the University of Pennsylvania for many years, is currently an adjunct professor of English and creative writing at Drexel University. She lives in Bucks County and will be our guest at Beth El, at an author event presented by the Adult Education committee on October 22, 2023.



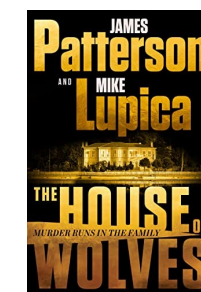
Dinners with Ruth, a memoir by Nina Totenberg. The author, a college dropout who, long before she became an acclaimed journalist, happened to meet Ginsberg years before RBG was appointed to the Supreme Court. The two became lifelong friends, sharing an interest in shopping, opera-going, and homecooked meals. Totenberg parlayed her access to a Supreme Court Justice into steady employment at NPR. After Ginsberg's death in 2020, Totenberg promptly published this best-selling memoir that, in fairness, received rapturous reviews from the mainstream media.



The Last Green Valley, by Mark Sullivan. The latest epic, 'inspired by a true story,' from the author of the #1 bestseller *Beneath a Scarlet Sky*. It tells the story of a family of German descent living in Ukraine during WWII, who get caught up between the advancing Red Army and the retreating Nazis. They decide to "retreat from their land with the wolves they despise to escape the Soviets and go in search of freedom." Much inspirational mayhem ensues. No Jewish content but it is a page-turner.



The Seven Husbands of Evelyn Hugo, by Taylor Jenkins Bend, is the #1 Best Seller in Women's Divorce Fiction on Amazon. (Yes, that's an actually category or, should I say, genre.) It is, according to the author's own description on Amazon, "an entrancing and 'wildly addictive journey of a reclusive Hollywood starlet' (PopSugar) as she reflects on her relentless rise to the top and the risks she took, the loves she lost, and the long-held secrets the public could never imagine." A great summertime read for the beach, according to our reviewer. (We neglected to find out whether there is any Jewish content but surely at least one of her seven husbands must have been Jewish.)



The House of Wolves, by James Patterson and Mike Lupica, is another "guilty pleasure" potboiler from the Patterson best-seller factory, this one mixing murder and sports (and probably many other things). Our reviewer, who is a fan, assures us that it's a fun read. He's still searching the text for any sign of Jewish content but, here at Book Nosh, we're nothing if not eclectic in our selections.

On Sunday, April 30, over 65 congregants and guests got together for some good old-fashioned Bingo! A great time was had by all. We played lots of bingo, ate pizza and cookies and also tried our luck at over 15 awesome raffle basket prizes. We had a multitude of great Bingo prizes for many winners for all age groups; something for everyone!

Thanks to Lee Kirsh and Penny Bardfeld, Bingo Co-Chairs. Also thanks to the Bingo committee: Abby Weber, Jen Goldstein, Ian Schachter, Meryl Broadbent as well as all the bingo day helpers: Bonnie Schachter, Rachael Oring, Liz Ravitch, Michelle Schachter, Phyllis Schachter, Eli Kirsh, Rich Oring and Lenny Bardfeld.

Abby Weber
Anna's Nail Salon
Ardana Newtown
Bamba Tacos
Bangz Hair Salon New Hope
Beth El Sisterhood
Bristol River Theater
Bubbes' Gift Shop
Burritos Yardley
Carol Benderson-Lighter
Charlotte Denenberg
Canal Street Grille
Carlucci's
David Witchell
Harvest Newtown
Indian Garden Yardley
Iron Hill Brewery
Joseph Jeffries Salon
Kedma Cantor
King George Inn
La Chele Medical Aesthetics

Learning Express Newtown
Liz Ravitch
Marilyn Stein
Mindy Albuck
Newtown Hardware Store
Panna Yardley
Penny Bardfeld
Phil Freidenreich
Pizza Yeah
Rachael Oring
Relic on State Street
Rocco's Newtown
Phyllis Schachter
Salon Millan
Shoprite of Yardley
The Vault
Triumph Brewing
Vila Rosa
Yardley Ice House
Young's Nail Salon
Zebra Striped Whale

*Thank
you*




Sisterhood
at Congregation Beth El of Bucks County

sisterhood of Beth El

YOU'RE INVITED TO A:

Pool Party

WEAR YOUR BATHING SUIT, BRING A TOWEL!
VARIETY OF CARDS AND BOARD GAMES WILL BE AVAILABLE.
LIGHT FOOD AND DRINKS WILL BE SERVED.

SWIMMING POOL SPLASHES AND WARM SUMMER BREEZES.
PLEASE JOIN US FOR A SISTERHOOD POOL PARTY!

FREE EVENT
RSVP REQUIRED BY JULY 18

WHEN: JULY 25, 2023
WHERE: THE ORING RESIDENCE
1498 REVERE RD, YARDLEY
TIME: 4:00PM - 7:00 PM
ARRIVE WHEN YOU CAN!



**Congregation
Beth El**

375 Stony Hill Road • Yardley, PA 19067
215-493-1707 • www.BethElYardley.org

Turn Shopping into Earning!

Earn up to 14%
directly to Beth El

Earns 14% back



Earn 7% back

ROBLOX

Earn 4.5% back



Earn 4% back



Earn 1.7% back

amazon

Earn 6% back



Earn 3% back



Earn 4% back

KOHL'S

Earn 2.5% back



Sisterhood
at Congregation Beth El of Bucks County

SIGN UP TODAY! [raiseright.com](https://www.raiseright.com) Sisterhood of Beth El Enrollment Code **LYRPR87569PU**

We are enrolled in the purchasing of the e gift cards only (e gift cards will be emailed to you directly). No other kind of orders will be processed.

INTRODUCING...

Beth El Sisterhood

ONEG SHABBAT SPONSORS

An Oneg is a lovely way to honor Someone you love, to celebrate an upcoming Simcha, or to remember a loved one in a special way. It's a great way to mark a special event: birth, engagement, wedding, anniversary, birthday, graduation, or the return to good health.

As a recognition Sponsor, your name and dedication will be read from the bima. You will be helping to celebrate Shabbat with the warmth and sense of community that are characteristic of our temple family.

The cost of Sponsoring an oneg is \$18.



ReSeRve your Oneg!
Your next Simcha is
around the corner!

<https://www.bethelyardley.org/sisterhood-beth-el.html>

Sisterhood
at Congregation Beth El of Bucks County

Please email sisterhood@bethelyardley.org or call the office 215-493-1707 x4 to reSeRve your Oneg





Chai Tea 2023





Let's Get Cooking

Cook For a Friend (CFAF) Update
Save the dates: Tuesdays, July 28 & September 12

Hello Chefs:

I may have told some of you that the CFAF point person from Kleinlife JCC recently left for another job. Until they replace him, I am contacting different people about delivering the meals. When I called about dropping off our meals today, the woman I spoke to asked me where I was from and what meal we made. When I told her we made Shepherd's Pie, she sounded very relieved. She said it's everyone's favorite meal; one of the women only gets our meal - she asked for Shepherd's Pie for all 10 meals she gets. So if you have ever wondered about how our cooking efforts are received, the answer is they like us! :) -Beth Sadoff

Support the ongoing needs of Bristol Baptist Church's High Holiday Food Drive



Beth El will be coordinating a food drive to support the ongoing needs of Bristol Baptist Church's food pantry. Members will receive a paper bag to fill with food items beginning with the Beth El barbecue through Rosh Hashanah, to be returned to the synagogue by Yom Kippur. As we prepare for our Yom Kippur fast, let us remember that there are members of our community, including many families with children, who are facing significant food insecurity on a regular basis. Please join us in this important Tikkun Olam work to address hunger in our local community!



Every hand helps

CHESED COMMUNITY

Chesed is the Hebrew word for "kindness." It is also commonly translated as "loving-kindness," or "love." Chesed is central to Jewish ethics and Jewish theology.

Beth El's Chesed Community is here for you! Each member of Congregation Beth El is a vital part of our caring community. We gladly share in each other's simchas and seek to be supportive of one another when we are experiencing challenges in our lives.

We are always looking for more volunteers to:

- *Cook a meal *Help in a Shiva home
- * Pick up something at the supermarket
- *Drive someone to a doctor's appointment
- *Drive someone to synagogue for services

Any way you can help, we are grateful for your time.

Contact the office to volunteer or
if you need assistance:

215-493-1707 x4 email barbara@bethelyardley.org

Do you have a simcha you want to share?

Share your simcha in our Mazel Tov Monday email & "About our Members" section in our weekly email

Mazel Tov Mondays are a great way to share your simcha with your Beth El Family. Email all Mazel Tov Monday submissions to barbara@bethelyardley.org by 9:00am on Sunday morning. All good news will be shared on Monday mornings. Your simcha may also be placed in the Friday Weekly email in the "About Our Members" section if the information is received by Thursday, 10:00am; email barbara@bethelyardley.org.



- ♦ Mazel Tov to Judith Snyder (proud parents, Leah Rachel and Benzion) on the birth of her 7th grandchild born in Israel.

Our Community Sends their Deepest Condolences to...

- ♦ Mickey Dickler on the passing of her son, Marc Dickler, z"l.
- ♦ Seth (Anna Kitces) Fishman on the passing of his mother, Sydel Fishman, z"l.
- ♦ Alexis (Mark) Fried on the passing of her sister, Shari Odenheimer, z"l.
- ♦ Andy (Julie Zaidler) Stone on the passing of his father, Walter Stone, z"l.

To make a donation, visit www.bethelyardley.org or fill out and mail the form at the back of the newsletter or call the office, 215-493-1707 x4.



of Yardley

SUPPORT Congregation Beth El by
purchasing grocery gift cards
from The Sisterhood

DO YOU SHOP AT SHOPRITE, MCCAFFREY'S or GIANT?

Purchase Grocery Gift Cards through the
synagogue office, call 215-493-1707 x4 or visit
www.bethelyardley.org, ENGAGE, Sisterhood Scrip to
make arrangements to pick them up. Gift cards come
in \$100.00 denominations.



*Goldsteins' Rosenbergs'
Raphael Sacks, INC.*

Caring. Committed. Compassionate.

*Our family is here for you when you have
funeral and pre-planning needs, just as
we have been for over a century.*

PHILADELPHIA CHAPEL
Carl Goldstein, Supervisor

BUCKS COUNTY CHAPEL
Bruce Goldstein, Supervisor

**ROTH GOLDSTEINS'
MEMORIAL CHAPEL**
Steven Collins, Mgr. NJ Lic. No. 3355

215-927-5800

GoldsteinsFuneral.com



Enrichment classes for older adults
Golden Slipper Gems is a Jewish
non-profit that offers inexpensive
university-quality courses on a variety
of topics including music, history, theater,
Israel, politics.

For more information contact:

Greta Wrigley
Program Director Bucks County
Golden Slipper Gems
(267) 984-0722
gwigley@goldenslipper.org

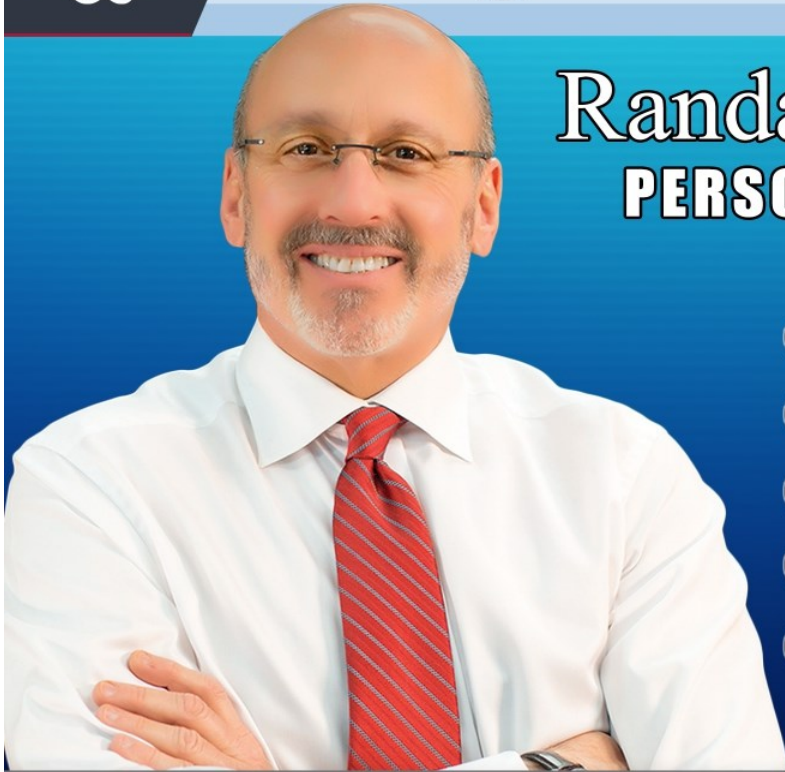
YOUR AD HERE

For more information on how to place an
AD in the Shofar, contact
Barbara Schwartz,
Synagogue Administrator,
215-493-1707 x4 or
barbara@bethelyardley.org.



Flager & Associates, PC

Randall C. Flager, Esq.
PERSONAL INJURY ATTORNEY



- ✓ Motor Vehicle Accidents
- ✓ Motorcycle Accidents
- ✓ Slip And Fall
- ✓ Municipal Law
- ✓ Premises Liability



Flager.law



215-953-5200



Your Agent for *Life*

**Moving in?
Moving out?
Moving up?**

Ask Nancy

Proud Sponsor of
Amy's Kisses Foundation



the goldberg group

Nancy Goldberg, REALTOR®
Cell 215-962-3778 . Office 215-860-9300
YardleyNewtownHomes.com



**BERKSHIRE
HATHAWAY**
HomeServices

Fox & Roach, REALTORS®



withum⁺

ADVISORY TAX AUDIT

engage the community

Withum proudly supports Congregation Beth El for fostering an atmosphere of family within the congregation and unity in the community.

withum.com



Panache Caterers

BY FOODARAMA

CATERING FOR ALL OCCASIONS- IN YOUR HOME, OFFICE, OR TEMPLE—FOR OVER 50 YEARS- CERTIFIED KOSHER

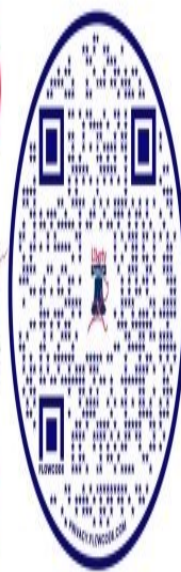


CALL FOR YOUR FREE MENU AND PARTY PLANNING GUIDE
215-633-7100 888-309-3800

WWW.FOODARAMA.COM

Liberty Fencing Club
(267) 482-9597
www.LibertyFencingClub.com

Please contact Cara Flash Davis or Marshal Davis to learn more or book a free class! (info@LibertyFencingClub.com)



- Private parties, special events, team-building activities available
- Competitive & Recreational Fencing Group Classes & Private Lessons for all levels and ages



SEARCHING FOR THE
PROMISED LAND?

LET ME LEAD THE WAY!

NADINE SIMANTOV

ASSOCIATE BROKER/PARTNER

2022 PLATINUM AWARD WINNER

SPECIALIZING IN BUCKS COUNTY

AND THE SURROUNDING AREAS!



MOBILE 215-858-2068

OFFICE 215-757-6100 EXT 126

EMAIL NADINESIMANTOV@GMAIL.COM

WWW.NADINESIMANTOVANDCOMPANY.COM

Papers by Kathi

Invitations

Wedding • Party • Celebration

Holiday • Baby & Bridal Showers • Announcements

Personalized Gifts • Stationery • Notepads • Stickers

Kathi

www.PapersbyKathi.Printswell.com

kathi@papersbykathi.com



MICHAEL'S
JEWELERS

AREAS LARGEST SELECTION
OF LAB AND NATURAL
DIAMONDS



Building Fund

In Honor of:

Birth of grandson to Judith Snyder
Robyn & Eric Fishbein

Birth of Cara & Leon Weissman's granddaughter Brielle Dakota

Michelle Flash
Lee & Michelle Schachter

In Appreciation of:

Elizabeth Ravitch's service to Congregation Beth El as President
Thomas Moore & Steven Schimchak

In Memory of:

Marc Dickler

Sherry & Randall Flager
Joan Garber
Carol Benderson-Lighter & Stuart Lighter
Selma Spivack & Nate Zankman
Marilyn & Allen Stein
Michelle & Michael Weinberg

Sydel Fishman

Sherry & Randall Flager

Sid Moszer

Juliette Harvey
Sara Anne Mladjen & Lewis Thomas
Larry Holman
Janet B. & Michael Simmons
Trudie Solarz
Cara & Leon Weissman

Cook for a Friend Fund

Yahrzeit of:

Vicki Lynn Lieberman
Robin & Jordan Lieberman

In Honor of:

Bat Mitzvah of Sarene Julin
Rochelle & Kenneth Krevitz
Carol Benderson-Lighter & Stuart Lighter

Cook For a Friend

Anonymous

Edwin Mittleman Adult Education Fund

In Memory of:

Sid Moszer
Gloria Mittleman

Marc Dickler

Gloria Mittleman

Eric J. Marinoff Memorial College Outreach Program Fund

For the Yahrzeit of:

Bernard Sohmer
Carol Sohmer

In Memory of:

Michael Goldsmith
Carol Sohmer

Jeff Krum

Janet & Norman Marinoff

Sydel Fishman

Margie & Jacob Wellerstein

Sid Moszer

Gloria Mittleman

Marc Dickler

Lois & Sidney Clearfield
Grace Jacob
Sara Pollock

In Honor of:

The birth of Judith Snyder's grandson
Janet & Norman Marinoff

Mazel Tov to Harriette & Phil Freidenreich on their new home
Margie & Jacob Wellerstein

Sarene Julin's Bat Mitzvah

Carol Benderson-Lighter & Stuart Lighter

Fierverker Jewish Learning Community (FJLC) Fund

In Memory of:

Marc Dickler
Milton Berger

Sid Moszer

Charlotte & Harold Denenberg

Gerald Schwartz

Linda Schwartz

Jacob Jaffe

Linda Schwaartz

Elaine Jaffe

Linda Schwartz

In Honor of:

Birth of Brielle Dakota, granddaughter of Cara & Leon Weissman
Kathi Wachtenheim

In Appreciation of:

Rabbi Cantor
Milton Berger

Morning Minyan Fund

Speedy Recovery to:
Harriet Freidenreich
Arthur Cohn

In Honor of:
The Flager Family & in Memory of Andy Flager
Yakov Sapozhnikov

Oring Family Chesed Fund

In Memory of:
Marc Dickler
Michelle Flash
Debra & Daniel Wachspress

Sydel Fishman
Karen & Marc Shoemaker

Perez Youth Scholarship Fund for Jewish Camps & USY Programs

In Memory of:
Marc Dickler
Bonnie Abrams
Jean Snyder

Prayer Book Fund

In Memory of:
Harris Fishbein
Robyn & Eric Fishbein

In Memory of:
Ed Mittleman
Elinor Pressel

In Appreciation of:
Elizabeth Ravitch's service to Congregation Beth El
Thomas Moore & Steven Schimchak

Rabbi's Discretionary Fund

In Memory of:
Marc Dickler
Sandra Hirsch

Sid Moszer
Sara & Bernie Schonbach

In Honor of:
Pride Shabbat
Thomas Moore & Steven Schimchak

The Flager Family and in memory of Andy Flager
Yakov Sapozhnikov

Asher Senior's Bar Mitzvah & Micah Senior's Confirmation
Shari & Ian Senior

Rhoda & Morris Volk Camp Ramah Scholarship Fund

In Memory of:
Marc Dickler
Caren & Nathan Bosk

Shabbat & Holiday Luncheons in Honor of Phil & Harriet Freidenreich Luncheon Fund

In Honor of:
Milt Berger's kindness & helpfulness
Eileen & Elliot Berkman

Pride Shabbat & 33rd anniversary of Flager Associates
Sherry & Randall Flager and Family

Yahrzeit/Yizkor Fund

Yahrzeit of:
Nathaniel Ephraim Schwartz
Monica Schwartz

Mollie Fleisher
Denah Heller

Rosalind Herscher
Barbara & Robert Alberts

Sylvia Cohen
Joyce & Herbert Cohen

Louis Zagorin
Harriet & Phil Freidenreich

Irene Gershenson, mother of Esther Lutzker
Esther & Albert Lutzker

Harry Gershenson, father of Esther Lutzker
Esther & Albert Lutzker

Shavuot & Yizkor Donation
Arthur Cohn



Donations may be made online, members only may bill their account. Visit www.bethelyardley.org (use your email and password to log in) or call the office, 215-493-1707 x4.

Have you ever considered buying a Memorial Plaque for your loved ones? The plaque will be mounted on our Yahrzeit board in perpetuity. Each year you will receive a notice of the date of the Yahrzeit, it will be announced during our Shabbat Services, and the plaque will be lit in memory of your loved one for a full month. The cost is \$750 for members and \$900 for non-members. Contact the office to receive a form or visit www.bethelyardley.org; About Us.



Memorial Plaques

We are looking for a few good in person & virtual Minyaneers

Congregation Beth El holds both morning and evening minyan services open to our members and friends in the community. We invite you to join us and become a regular volunteer. Take some time from your busy day or week to pray with friends and neighbors, and be there to support a person saying kaddish or in a period of mourning.

***It's a mitzvah...it's good for you and it's good
for our community.***

Daily Morning Services: (in person only)

Monday - Friday at 7:00am
8:00am on holidays

Sunday at 8:00am

Daily Evening Services: (virtual only)

Monday - Thursday at 7:30pm
Sunday at 7:30pm

Join us virtually, visit: www.bethelyardley.org;
click on the Virtual Beth El icon.

Thankful for Books

Honor someone you know by donating a book to the Beth El library through the Fierverker Jewish Learning Community (FJLC) sponsored by the Parent Teacher Organization (PTO).

Donate a book for any occasion!

Birthdays B'nai Mitzvah Anniversaries Baby Naming and more!

All money donated to this fund benefits the advancement of Jewish education for FJLC (PreK through 7th grade).

A special book plate will be placed in one of our library books to be shared with the community.

Suggested donations are \$18.00.

Members: Log into to your member portal to make a donation.
All credit card transactions will incur a 2.9% fee.

Visit www.bethelyardley.org; click on the PTO tab under “ENGAGE” or call the office, 215-493-1707 x4.





The Siddur Lev Shalem for Shabbat and Festivals

The Siddur Lev Shalem has all the prayers and psalms with commentary, spiritual reflections and historical background for some of the readings.



The Mahzor Lev Shalem for Rosh Hashanah and Yom Kippur

The Mahzor Lev Shalem's running commentary presents both a historical overview and insight into the meaning of prayers. Many readings focus on spiritual issues and tikkun olam, as well as reflections, stories and quotes.



The Etz Hayim Chumash

The Etz Hayim is a joint venture with the Rabbinical Assembly, the United Synagogue of Conservative Judaism, and the Jewish Publication Society. It features English translation, Hebrew text, essays on key themes by prominent Conservative movement rabbis and scholars, Haftarot and commentary.

Siddur Lev Shalem/Mahzor Lev Shalem/Etz Hayim Chumash

Please print legibly:

Donor's Name: _____

(How you want your name to appear on the bookplate)

Phone: _____ Email: _____

I wish to donate (check one or all that apply):

_____ #Siddur Lev Shalem X \$54 (each) = _____ **circle one:** Home use or donate to Beth El

_____ #Mahzor Lev Shalem X \$54 (each) = _____ **circle one:** Home use or donate to Beth El

_____ #Etz Hayim Chumash X \$54 (each) = _____ **circle one:** Home use or donate to Beth El

BOOK PLATE DEDICATION INFORMATION

In memory of (name): _____

In honor of (name/occasion for honor): _____

Please use a separate piece of paper for additional book plate donations. Mail your check with this form to
Congregation Beth El 375 Stony Hill Road Yardley, PA 19067 ATTN: Siddur/Mahzor

Tree of Life: Honor a birthday, anniversary, wedding, Bar/Bat Mitzvah or any other happy occasion with an engraved leaf on our tree of life for \$180 or a boulder for \$750.

Donation Cards: Our donation cards are a wonderful way to recognize important lifecycle events, extend wishes for speedy recovery, show your appreciation for someone’s kindness or in memory of a loved one. It also helps to fulfill the mitzvah of tzedakah. There are two different cards to choose from a beautiful menorah card (\$15) and a colorful picture of three of our Torot (\$25).* Your gift can also be designated to one of the funds below. Contributions may be made online at www.bethelyardley.org, by contacting the office, 215-493-1707 x4 or mailing in the form below. **Donations under \$15 will no longer receive a card.***

Book Dedications: There are also opportunities to have a bookplate placed on the back of the front cover of a Siddur (prayer book) or Mahzor (High Holiday Prayer Book) - any time someone opens the book, they will learn of your donation: Prayer Book, \$54; High Holiday Mahzor, \$54, Etz Hayim Chumash, \$54.

Memorial (Yahrzeit) Plaques: Among the customs to help us with loss and bereavement is the commemoration of a loved one on a Yahrzeit plaque. These plaques, which are affixed to a special memorial board in our Chapel, are an expression of love and devotion. The plaque will be mounted on our Yahrzeit board in perpetuity. Each year you will receive a notice of the date of the Yahrzeit, it will be announced during our Shabbat Services, and the plaque will be lit in memory of your loved one for a full month. The cost is \$750 for members and \$900 for non-members. Contact the office to receive a form or visit www.bethelyardley.org; About Us.

Cemetery Plots: Beth El owns plots at King David Memorial Park in Bensalem. Call the office for further details and pricing information or contact Michael Weinberg at 215-801-4929.

-----return bottom portion with payment or visit www.bethelyardley.org to make an online donation-----

CONGREGATION BETH EL DONATION FORM

Enclosed is my gift of \$_____ (Menorah Card \$15, Torah Card \$25+; donations under \$15 will no longer receive cards)

- ☐ Building Fund

☐ Cook for a Friend Project Fund

☐ Edwin Mittleman Adult Education Fund

☐ Eric J. Marinoff Memorial College Outreach Program Fund

☐ Fierverker Education Fund

☐ Golda Meir Religious Books & Articles Fund

☐ Fund for Shabbat & Holiday Luncheons
in honor of Phil & Harriet Freidenreich
- ☐ Morning Minyan Fund

☐ Oring Family Hesed Fund

☐ Perez Youth Scholarship Fund for Jewish Camps
& USY Programs

☐ Rabbi’s Discretionary Fund

☐ The Rhoda & Morris Volk Camp Ramah Scholarship Fund

☐ Lev Shalem Prayer Book Donation or _____ purchase(\$54 each)

☐ Lev Shalem Mahzor Donation or _____ purchase (\$54 each)

☐ Etz Hayim Chumash Donation or _____purchase (\$54 each)

Recipient _____

Occasion _____

Recipient Address: _____

Donor Name (s) _____

Donor Address: _____

I would like more information about:

☐ Tree of Life

☐ Memorial Plaques

☐ Cemetery Plots

☐ Other Ways I Can Give


Mail check payable to: Congregation Beth El 375 Stony Hill Road Yardley, PA 19067

Sunday	Monday	Tuesday	Wednesday	Thursday	Friday	Saturday
						1 (12 Tammuz) Chukat-Balak 9:00am Torah Study 9:30am Shabbat Morning Services 9:15pm Havdalah
2 (13 Tammuz) 8:00am Morning Minyan 7:30pm Evening Minyan	3 (14 Tammuz) Office closed 8:00am Morning Minyan 7:30pm Evening Minyan		5 (16 Tammuz) 7:00am Morning Minyan 7:30pm Evening Minyan	6 (17 Tammuz) Fest of Tammuz 7:00am Morning Minyan 7:30pm Evening Minyan	7 (18 Tammuz) No Friday Evening Services 7:00am Morning Minyan 8:15pm Candle Lighting	8 (19 Tammuz) Pinchas 9:00am Torah Study 9:30am Shabbat Morning Services 9:13pm Havdalah
9 (20 Tammuz) 8:00am Morning Minyan 7:30pm Evening Minyan	10 (21 Tammuz) 7:00am Morning Minyan 7:30pm Evening Minyan 8:00pm Executive Committee Meeting		12 (23 Tammuz) 7:00am Morning Minyan 7:30pm Evening Minyan	13 (24 Tammuz) 7:00am Morning Minyan 7:30pm Evening Minyan	14 (25 Tammuz) No Friday Evening Services 7:00am Morning Minyan 8:12pm Candle Lighting	15 (26 Tammuz) Matot-Masei Shabbat Mevarchim No Torah Study 9:30am Shabbat Morning Services 9:10pm Havdalah
16 (27 Tammuz) 8:00am Morning Minyan 2:00pm Beth El Field Trip: Walking Tour of Princeton??s Campus Sculpture Collection 7:30pm Evening Minyan	17 (28 Tammuz) 7:00am Morning Minyan 7:30pm Evening Minyan	18 (29 Tammuz) 7:00am Morning Minyan 7:30pm Evening Minyan	19 (1 Av) Rosh Chodesh Av 7:00am Morning Minyan 2:00pm Adult Education Committee Meeting 6:30pm Membership Committee Meeting 7:30pm Evening Minyan	20 (2 Av) 7:00am Morning Minyan 7:30pm Evening Minyan	21 (3 Av) No Friday Evening Services 7:00am Morning Minyan 8:07pm Candle Lighting	22 (4 Av) Devarim Shabbat Hazon 9:00am Torah Study 9:30am Shabbat Morning Services 9:05pm Havdalah
23 (5 Av) 8:00am Morning Minyan 7:30pm Evening Minyan	24 (6 Av) 7:00am Morning Minyan 7:30pm Evening Minyan 8:00pm Board of Directors Meeting	25 (7 Av) 7:00am Morning Minyan 4:00pm Sisterhood Swim Party 7:30pm Evening Minyan	26 (8 Av) Erev Tisha B'Av Evening Minyan will be held with Tifereth Israel 7:00am Morning Minyan 8:00pm Erev Tisha B'Av Services at Tifereth Israel	27 (9 Av) Tisha B'Av Office closed 7:00am Morning Minyan 1:45pm Tisha B'Av at Beth El 7:30pm Evening Minyan	28 (10 Av) No Friday Evening Services 7:00am Morning Minyan 8:01pm Candle Lighting	29 (11 Av) Vaetchanan Shabbat Nachamu 9:00am Torah Study 9:30am Shabbat Morning Services 8:59pm Havdalah
30 (12 Av) 8:00am Morning Minyan 7:30pm Evening Minyan	31 (13 Av) 7:00am Morning Minyan 7:30pm Evening Minyan					

Congregation Beth El

August 2023 / Av - Elul 5783

Subject change

Sunday	Monday	Tuesday	Wednesday	Thursday	Friday	Saturday
		1 (14 Av) 7:00am Morning Minyan 7:30pm Evening Minyan	2 (15 Av) Tu B'Av 7:00am Morning Minyan 7:30pm Evening Minyan	3 (16 Av) 7:00am Morning Minyan 7:30pm Evening Minyan	4 (17 Av) No Friday Evening Services 7:00am Morning Minyan 7:54pm Candle Lighting	5 (18 Av) Elkev 9:00am Torah Study 9:30am Shabbat Morning Services 8:51pm Havdalah
6 (19 Av) 8:00am Morning Minyan 10:00am FULC Open House 7:30pm Evening Minyan	7 (20 Av) 7:00am Morning Minyan 7:30pm Evening Minyan 8:00pm Executive Committee Meeting	8 (21 Av) 7:00am Morning Minyan 7:30pm Evening Minyan	9 (22 Av) 7:00am Morning Minyan 7:30pm Evening Minyan	10 (23 Av) 7:00am Morning Minyan 7:30pm Evening Minyan	11 (24 Av) No Friday Evening Services 7:00am Morning Minyan 7:45pm Candle Lighting	12 (25 Av) Re'eh Shabbat Mevarchim 9:00am Torah Study 9:30am Shabbat Morning Services 8:43pm Havdalah
13 (26 Av) 8:00am Morning Minyan 9:00am Teacher Set Up & Meeting & Staff Training 7:30pm Evening Minyan	14 (27 Av) 7:00am Morning Minyan 7:30pm Evening Minyan	15 (28 Av) 7:00am Morning Minyan 10:00am Movie Meet Up with Kedma Cantor 7:30pm Evening Minyan	16 (29 Av) Shofar Newsletter Deadline 7:00am Morning Minyan 6:30pm Membership Committee Meeting 7:30pm Evening Minyan	17 (30 Av) Rosh Chodesh Elul 7:00am Morning Minyan 10:00am Bar Mitzvah of Ari Freeman 7:30pm Evening Minyan	18 (1 Elul) Rosh Chodesh Elul 7:00am Morning Minyan 6:00pm Friday Evening Services 7:36pm Candle Lighting	19 (2 Elul) Shoftim 9:00am Torah Study 9:30am Shabbat Morning Services 5:30pm Bar Mitzvah of Logan Orling 8:53pm Havdalah
20 (3 Elul) 8:00am Morning Minyan 10:00am Classroom Set Up 7:30pm Evening Minyan	21 (4 Elul) All High Holiday Forms due 7:00am Morning Minyan 7:30pm Evening Minyan 8:00pm Board of Directors Meeting	22 (5 Elul) 7:00am Morning Minyan 7:30pm Evening Minyan	23 (6 Elul) 7:00am Morning Minyan 7:00pm Golda: Sneak Preview 7:30pm Evening Minyan	24 (7 Elul) 7:00am Morning Minyan 7:30pm Evening Minyan	25 (8 Elul) 7:00am Morning Minyan 6:00pm Friday Evening Services 7:26pm Candle Lighting	26 (9 Elul) Ki Teitzei 9:00am Torah Study 9:30am Shabbat Morning Services 9:30am Bar Mitzvah of Brandon Drucker 8:23pm Havdalah
27 (10 Elul) 8:00am Morning Minyan 9:30am Shofar Blowing Class with Kedma Cantor 7:30pm Evening Minyan	28 (11 Elul) 7:00am Morning Minyan 7:30pm Evening Minyan	29 (12 Elul) 7:00am Morning Minyan 7:30pm Evening Minyan 8:00pm School Committee Meeting	30 (13 Elul) 7:00am Morning Minyan 7:00pm Jewish Discussions & Watch Party: The Good Place 7:30pm Evening Minyan	31 (14 Elul) 7:00am Morning Minyan 7:30pm Evening Minyan		



**Congregation
Beth El**

375 Stony Hill Road
Yardley, PA 19067
215-493-1707
Email: office@bethelyardley.org

Shofar Editorial Committee

Arleen Barisa, Milt Berger, Charlotte Denenberg, Marsha Flager, Alex Geiger, Helene Geiger, Sandie Hirsch, Sara Pollock, & Joe Schwartz

Main Office.....215-493-1707
Email.....office@bethelyardley.org
Gift Shop.....call the Main Office

Professional Staff

Kedma Cantor, Education Director.....x3
Barbara Schwartz, Synagogue Administrator.....x4
Michele Krane, Office Assistant.....x4
David A. Cantor, Rabbi.....x5

