

ANNUAL REPORT



2017

Congregation Temple Israel

INSIDE

Leadership & award recipients
Messages from the President, Treasurer & Executive Director
Committee accomplishments & highlights
Rabbis' Circle & The Shofar Society dues level recognition
Annual High Holy Days Giving donor listing



Congregation Temple Israel
#1 Rabbi Alvan D. Rubin Dr., St. Louis, MO 63141
314-432-8050
www.ti-stl.org

2017 LEADERSHIP

OFFICERS

Dee A. Mogerman, President
Robert D. Litz, President-Elect
David Chassin, Vice President
Harvey A. Harris, Vice President
Neil Marglous, Vice President
Jeremy Shook, Vice President

Michael Weiss, Vice President
Debbie Schultz, Treasurer
Jeffrey Stern, Assistant Treasurer
Kathy de la Garza Ortals, Secretary
Louise Losos, Assistant Secretary
JoAnne Levy, Immediate Past President

TRUSTEES

David Aronson
Jeff Bernstein
Jeff Brown
Carol Cohen
Hope Edison
Allan Epstein
Sarah Falkoff
Carla Feuer
Jayne Fingerman

Pepe Finn
Milton Fry
Thomas Glick
Susan K. Goldberg
Cathy Goldsticker
Dr. Morton Green
Ted Greenberg
Natalie Handelman
Sally Heller

Philip Horwitz
Amy Lampert
Dr. Jerry Levy
Jan Offenbach Nykin
Andrew Olschansky
Amanda Packman
Caryn Sandweiss
Darcy Scharff, PhD
Erin Schneider

Christine Schulze
Arnold Spirtas
Susan Stiefel
Michele Steinberg

PAST PRESIDENTS

JoAnne Levy, 2011-13
Dr. David L. Weinstein, 2007-10
Neil J. Handelman, 2005-06
Cary J. Mogerman, 2002-04
Daniel J. Schwartz, 1999-2001

Karen L. Knopf, 1996-98
Leonard J. Adreon, 1994-95
Ellen Deutsch, 1991-93
Gary A. Follman, 1988-90

RABBIS & LEADERSHIP STAFF

Amy Feder, Rabbi
Michael Alper, Rabbi
Mark L. Shook, Rabbi Emeritus
Rachel Wallis Andreasson, Executive Director
Kim Rivera, Director of Business Operations

Leslie Wolf, Director of Family Education
Derrick Bryant, Building Supervisor
Debbie Jennings, Kitchen Manager
Erin Wolfman May, Communications Director



Above - 2017 Officers (Left to Right): Kathy de la Garza Ortals, Louise Losos, David Chassin, Dee A. Mogerman, Harvey A. Harris, JoAnne Levy, Jeremy Shook, Robert D. Litz, Neil Marglous, Michael Weiss, and Debbie Schultz

Not Pictured: Jeffrey Stern



2018 SLATE OF NOMINEES

OFFICERS

Robert D. Litz, President
David Chassin, Vice President
Louise Losos, Vice President
Neil Marglous, Vice President

Jeremy Shook, Vice President
Michael Weiss, Vice President
Debbie Schultz, Treasurer
Brad Arst, Assistant Treasurer

Kathy de la Garza Ortals, Secretary
Amy Lampert, Assistant Secretary
Dee A. Mogerman, Immediate Past President
Allan Epstein, Member At-Large
Dr. David L. Weinstein, Member At-Large

TRUSTEES

Nominees for a first three-year term

Liz Buchman
Ed Goldberg

Amanda Klopfenstein
Hon. Matthew Meyers

Steven Rosenblum
Jeffrey Stern
Dr. Susan Tuteur

Nominees for a second three-year term

Andrew Olschansky
Caryn Sandweiss
Arnold Spirtas

Nominees for a first two-year term

Burt Bromberg
Sally Heller

RECOGNIZING OUR OUTGOING OFFICERS & TRUSTEES

Receiving a Citation for Religious Leadership Award

Jeffrey Bernstein, Trustee
Pepe Finn, Trustee
Thomas Glick, Trustee

Susan K. Goldberg, Trustee
Dr. Morton Green, Trustee
Harvey A. Harris, Vice President

JoAnne Levy, Past President
Susan Stiefel, Trustee
Jeffrey Stern, Assistant Treasurer

PILLAR OF THE TEMPLE AWARD RECIPIENTS

Carla Freiman Feuer
Josh Fingerman
Erin Wolfman May

PRESIDENT'S AWARD FOR CONTINUING EXCELLENCE (P.A.C.E.) AWARD RECIPIENT

Rabbi Mark L. Shook, Rabbi Emeritus

**SPECIAL OPPORTUNITY TO HONOR ANY OF OUR
INCOMING/OUTGOING BOARD MEMBERS OR AWARD RECIPIENTS
WITH A TRIBUTE DONATION IN THEIR HONOR**

More information on page 27.

PRESIDENT'S REPORT



DEE A. MOGERMAN PRESIDENT

December of 2017

In our 131st year, we have much to celebrate, much to be grateful for and much to be thankful for as a community at Congregation Temple Israel. In 2017, we have focused on rededication to the work of investing in the people, programs and facilities necessary to help us fulfill our commitment to our membership. Our rabbis, staff, board members, committee members, and volunteers have concentrated on building and strengthening relationships with our members. We all continue to work hard to respond, "Hineynu - Here We Are" for all of the needs of our Temple Israel family. The 131st Annual Report of

Congregation Temple Israel highlights these efforts over the past year.

While we have accomplished much, there is still much to do in our 132nd year and beyond.

I am excited that our new Executive Director, Rachel Wallis Andreasson, has recently joined the staff of Temple Israel. Rachel will concentrate on the active management of all aspects of the business end of maintaining the membership, development, and human resources. She will work closely with the President, the board of trustees, and the rabbis. Rachel will also be the point of contact for prospective and new members as we make them feel welcome at their new Temple Israel home.

Youth Education continues to be a major focus for 2017. Our goal is to re-work our Religious and Hebrew School programs to provide engaging Jewish educational experiences for our children. Deutsch Early Childhood Center continues to thrive. I am pleased to report that the Temple Israel Federation of Temple Youth (TIFTY) is rebuilding so that our youth group can remain a vibrant participant in the region and continue a past tradition of leadership.

The physical plant within which our congregation maintains its home continues to have the long-term challenges you would expect to see in a building that is nearly 60 years old. Over the past five years, several significant areas of the building have been renovated, repaired, and updated. With the help of the hardworking members of the Facilities Committee, a plan for our immediate needs has been developed. We were grateful to be able to do a major construction project in the Goldstein Education Building this past summer, thanks to the generosity of several of our members as well as from insurance proceeds from a loss at the Edison Retreat Center which were earmarked for capital improvements. Energy-saving LED lightbulbs were installed throughout the entire building this year which has already resulted in substantial savings to our operating costs. Our front entrance has been enhanced with a new garden in the front beds, and attractive new pathway lighting was installed.

Financial strength and stability are keys to being responsive to our members now and in the future. The Board of Trustees continues to pass a balanced budget each year as we have since 2012, and we have carefully managed our financial affairs each year. Although it appears that actual operational costs will cause us to end 2017 with a minimal loss, we have ended each of the past several years with modest surpluses and have plans to return to this status in 2018. We carefully monitor our expenses, but our revenue is a challenge. While our dues collections do not cover our expenses and have not for many years, the gap continues to widen. A variety of fundraisers, a positive return on our investments, and a successful annual appeal helped us narrow that gap.

Our temple community thrived in 2017. Our volunteers are the key to our success. Many of our members have rededicated themselves selflessly as volunteers in our Temple community. Our community has been built and maintained by the dedication and commitment of devoted members. Whatever your interests, we are enriched by your participation in every facet of synagogue life. There is always room for more volunteer effort. If you are not involved, I hope 2018 will be the year that you choose to become active. I hope you will consider



PRESIDENT'S REPORT

joining a committee, helping the office as needed with mailings or other projects, or volunteering some of your time, your skills and your expertise to the service of any of the many worthy congregational initiatives. There are events to plan, projects large and small, where your talents and energy will be put to good use. The rewards of giving far outweigh the time and effort spent. For 131 years, many have given their time and resources, with generous hearts, to make Temple Israel the special place it is today. Thank you to the exceptional people who have said, "Hineyni, Here I Am!" and stepped up to the tasks needed.

We will continue to have many challenges ahead – many are not new, and few are unique to us. I have confidence, with the leadership of our next president, Rob Litz and our dedicated board of trustees, we can continue to rededicate ourselves to move Temple Israel forward as we have for the past 131 years. As our Immediate Past President JoAnne Levy said when I was installed, please be kind to Rob as this is a hard job. Be supportive of him, for no matter how strong a President is, your support is critical. Working together is vital to sustaining and growing our Temple Israel home, a place where all find comfort, peace, spiritual fulfillment and friendship.

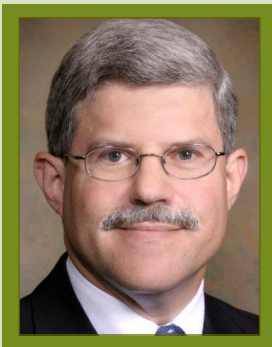
I thank our Board of Trustees, Officers and the many volunteers who devote countless hours unselfishly; our leadership team, staff, and teachers who work very hard to serve our membership; and our rabbis who help to guide us along our Jewish journeys and tend to our individual pastoral needs. I would also like to thank my family, especially my husband, Cary, for your love and incredible support.

As my fourth and final year of my term as President comes to a close, I am better able to appreciate the rich history of our institution and understand how this has transformed us into the congregation that we are today. I thank you all for the opportunity to serve as the 34th President of Congregation Temple Israel, for your support, encouragement, dedication, and especially for your friendship. It has been a personal joy and honor to serve you. May we begin our 132nd year proudly as a Congregation with strength, as we strive to be a kehillah kedoshah – a holy community.

L'Shalom,



Dee A. Mogerman
president@ti-stl.org



ROBERT D. LITZ PRESIDENT-ELECT

Robert "Rob" D. Litz is President of U.S. Arbitration & Mediation (USA&M) and an experienced civil trial lawyer, arbitrator, and mediator. Rob is an Adjunct Professor of Law at Washington University, having taught arbitration and mediation courses since 2005, and has authored publications in numerous legal periodicals. He has served as faculty for various legal training programs and seminars across the country. He is admitted to the Missouri Bar (1981); U.S. District Court Eastern District of Missouri (1981); 8th Circuit Court of Appeals (1981); and 11th Circuit Court of Appeals (1989).

Rob has served on the Temple Israel Board of Trustees for the past six years, as well as chaired the Temple Israel Israel Engagement Committee for the past eight years. He previously served on the Membership and Youth Education Committees and taught 5th grade in our Religious School for several years. Rob previously served for six years on the Central Agency for Jewish Education's (CAJE) board of directors, and currently serves on the Law Foundation Board of UMKC-School of Law.

Rob lives in Olivette, MO with his wife, Nancy, and is the father of Nate Litz, step-father of Katie Rice-Guter, Mandi Rice, and Rob Rice. He is the son of Judge and Mrs. Arthur Litz.

DIRECTOR'S REPORT



RACHEL WALLIS ANDREASSON EXECUTIVE DIRECTOR

December of 2017

I am thrilled to be at TI and honored to serve our congregation. I greatly appreciate the warm welcome I have received. Being the Executive Director has been very exciting and energizing. I love working with the rabbis, Presidents, staff, and our members to help move TI forward. Since I started on October 23, 2017, I have been focusing on the following areas:

MEMBERSHIP

Preparation and mailing of 2018 Continuing Synagogue Support letters which were mailed the week of November 27. We are so fortunate to have so many members who contribute above their required dues level so that we can honor TI's historical policy of offering membership to anyone who wishes to be a part of our community, regardless of ability to pay standard dues levels.

Updated the Membership Application for new members and put the new form in place last month.

DEVELOPMENT

Working with our Chair, Linda Horwitz, on the 2018 Gala to be held on Saturday, March 3, 2018. The Gala is our primary fundraiser for TI and the committee has planned a fun, exciting adult Purim masquerade theme. Invitations will be mailed the first week in January. We are excited to partner with DECC parents this year to have one large fundraiser. Our future focus is to continue to build a bridge for those unaffiliated Jewish families and have them choose TI as their spiritual home.

COMMUNITY

Building community and revitalizing existing committees, volunteer groups, and affinity groups is a focus. Check out the website and submit any information about yourself so that we may know your special skill sets and interests. www.ti-stl.org/Volunteer

We are thankful for the many volunteers, Board members, and committee members who work countless hours for the betterment of TI.

FACILITIES

Working with the staff and the Facilities Committee on prioritizing safety and image issues inside and outside of the building and working toward a resolution.

STAFF

Working with our staff to create sustainable systems that will allow us to operate more effectively and efficiently.

My door is open to hear your thoughts and insights on your experience at TI! Please feel free to reach out.

A handwritten signature in black ink, appearing to read 'Rachel'.

Rachel Wallis Andreasson
randreasson@ti-stl.org



TREASURER'S REPORT



DEBBIE SCHULTZ TREASURER

December of 2017

In recent years, the gap between income raised from Continuing Synagogue Support (dues) and our operating expenses has continued to widen. While our congregation has never been sustained by dues income alone, the decrease in dues income has placed increasing importance on our various fundraising efforts in order to support the operations of the Temple. In 2017, a number of event fundraisers were held to both build community and raise funds. Our Annual High Holy Days Giving has again been successful, thanks to donations of generous congregants and non-member visitors. The Scrip (Gift Card) program continues to grow, and we are looking at new and innovative ways to increase participation in the program. Smaller fundraising efforts such as TI's Wish List donations, tributes, and other giving opportunities continued in 2017. **Continued emphasis on fundraising, coupled with the diligence of our lay leaders and staff in controlling expenses, will continue to be required in order to ensure the long term financial health of the congregation.**

Over the past several years, Temple Israel has been the beneficiary of several large unrestricted gifts from generous donors. To ensure the continued financial stability of the congregation, the Board of Trustees has placed these funds in the "Woolf Fund," a new Board restricted endowment. These funds are invested separately from the Temple's operating endowment in a portfolio designed to create interest income of at least \$140,000 each year to be used against the Temple's operating expenses. Our Board takes seriously the fiduciary duty to protect the Temple's financial position, resulting in the decision to invest these funds in such a way that provides for income for many years.

As a lifelong Temple member, I am proud of our commitment to ensure we offer membership to anyone who wishes to become a part of our community, regardless of their ability to pay at standard dues levels. While this is largely sustained by the Continuing Synagogue Support of our members who have opted to be members of The Shofar Society and by those who pay standard levels, we do not discount the value of those who cannot pay fully but contribute in smaller amounts or other ways. Whether you can afford \$18 per month, can contribute at the highest levels of The Shofar Society, participate in the Scrip fundraiser, or volunteer your time, **your membership is valuable to us**, and we appreciate your commitment to our congregation's future financial stability. If your financial situation allows you to increase your giving in 2018, please indicate as such when returning your Temple dues statement or contact the Temple office.

In late November, your Board of Trustees approved the 2018 Temple budget. After a detailed analysis, we have increased Continuing Synagogue Support at all dues levels to keep the budget in balance. The budget also includes aggressive fundraising and development budget targets, and we hope that you will consider each giving opportunity and participate as your family's budget allows.

I look forward to a successful 2018, as we continue to work together to ensure the financial future of our congregation.

B'shalom,

A handwritten signature in dark ink that reads "Debbie".

Debbie Schultz
dschultz@ti-stl.org

COMMITTEE REPORTS

INVESTMENT COMMITTEE

2017 Accomplishments:

The purpose of the Investment Committee of Temple Israel is to safeguard the marketable investment assets of the Temple and ensure that these assets of the Temple provide income for current Temple services and needs along with growth of the portfolio. In addition, the committee strives to invest the funds of the endowment in accordance with the mission of Congregation Temple Israel, a caring inclusive community committed to living Reform Judaism and participating in the sacred destiny of the Jewish people and Israel through education, worship, and repair of the world.

The investment of the Temple's funds is provided by a professional investment advisor. Throughout the year the committee reviews portfolio performance.

I am pleased to report to the congregation membership that performance for the Endowment account through October 31, 2017 is up 11.4% net of all fees and expenses. As always, to help limit risk, the Investment Policy restricts the equity portion of the portfolio to no more than 65% (60% traditional equities and 5% in alternatives). Bonds and cash make up the remaining percentage of the portfolio.

The current allocation of the Endowment portfolio is as follows:

- 11.00% Cash (Money Markets)
- 30.30% Fixed Income (Bonds)
- 55.80% Equities (Stocks) - 32.5% US, 18.6% International, 4.7% Emerging Market
- 2.90% Equities (Alternatives - MLPs and REITs)

Committee Chair: Joshua Reichman

Staff Liaison: Kim Rivera

Committee Members: David Aronson, Arthur Auer, Ellen Brin, Jack Deutsch, Allan Epstein, Rabbi Amy Feder, Doris Fishman, Milton Fry, Ted Greenberg, Cathy Goldsticker, Neil Handelman, Dr. Jerry Levy, Louis Loebner, Andrew Reiter, Diana Rothbarth, Debbie Schultz, Jeffrey Stern, and Neil Wolfman

FINANCE COMMITTEE

2017 Accomplishments:

Served as Temple Israel's audit committee.

We regularly review control over TI's assets.

Assisted Temple Israel in financial reporting.

Discussed monthly and year-end reporting for improvements, and reviewed and coordinated with the Temple's auditors.

Serve as consultants to the board and senior staff on all finance matters.

In 2017, significant discussions regarding revisions of endowments and assisting with accounting for new endowment gifts. The Finance Committee is always looking for better and creative ways to make certain historical gifts available to enhance operations without adding costs.

Committee Chair: Allan Epstein

Staff Liaison: Kim Rivera

Committee Members: Ellen Brin, Cathy Goldsticker, Dee A. Mogerman, Debbie Schultz, Jeffrey Stern, and Mike Weiss



COMMITTEE REPORTS

KAHN FOUNDATION COMMITTEE

2017 Accomplishments:

The Nathan Kahn - Ernestine Kahn - Charles Kahn Foundation, an endowed fund of Temple Israel, was established through the generosity of Lina Kahn for the purpose of improving the quality of life for senior citizens. From the first grants awarded in 1992 to the present, the Foundation has distributed over \$2,832,000 to agencies and organizations for services and projects benefiting the elderly. Funding is provided from the earnings on invested funds.

Grant requests are received from many agencies in the Jewish community as well as the general community and are reviewed by the committee twice each year for funding. Proposals range from programs that are religious, social, educational, and recreational to those concerned with the health and wellness of our senior citizens.

For the year 2017, the Kahn Foundation awarded grants totaling \$153,250.

Grant recipients included:

- Jewish Community Center - Kosher Senior Meal Program
- Crown Center for Senior Living - Happy Planters Project
- Guardian Angel Settlement Association - Case Management and Consumer Education for Seniors
- Maturity and Its Muse - Celebrating Art for Senior Engagement
- Center for Hearing and Speech - Combating Hearing Loss Experienced by St. Louis Area Senior Citizens
- Congregation Temple Israel - 31st Annual Thanksgiving Dinner for Those in Need
- Congregation Shaare Emeth, Congregation Temple Israel, United Hebrew Congregation - Monthly Senior Lunches and Jewish Seniors on the Move
- iTN Gateway - Transportation for Seniors
- Memory Care Home Solutions - Dementia Care Intervention
- Gateway to Hope - Direct Assistance to Breast Cancer Patients over age 65

Chair: Linda Kraus

Staff Liaison: Rabbi Amy Feder

Committee Members: Randy Arst, Pamela Dern, Doris Fishman, Neil Marglous, Dee A. Mogerman, Kim Rivera, and Marcee Silverstein



Above - Left: St. Louis community seniors enjoying lunch at a Jewish Seniors on the Move outing

Above - Right: Monthly Senior Lunch



COMMITTEE REPORTS

FACILITIES COMMITTEE

2017 Accomplishments:

Goldstein Education Building Renovation - Phase 1

Following careful planning, Phase 1 Renovations to our Goldstein Education Building were completed over the summer of 2017, while our summer camp was temporarily relocated. The renovations include new plumbing and totally renovated restrooms, and new handicap accessible restrooms on each floor. All new, durable finishes and fixtures, and energy saving touchless controls, and high efficiency exhaust fans were specified. Modern, easily maintained tile, partitions, and resin flooring all create bright, clean spaces for our Deutsch Early Childhood Center, Hebrew and Religious School students and staff. A new larger water line from Spoede Road, and a new sprinkler system, and updated, integrated alarm systems were installed for additional safety in every room. With the building and pool area closed, many smaller repairs were accomplished inside and out. Improvements were made to the pool deck, pool showers, and changing areas. New paving, fencing, and drainage for the riding toy play area were created just above the pool, and new safety fencing installed around the pool and the nature area. Although there is not much “visual” impact, the Education Building has some major infrastructure improvements in place. On to more future renovations in Phase 2, when funded!

Energy Saving LED Interior Lighting

In 2017 we finished the final phases of our LED lighting conversion of all room lighting in the main Temple and Education Buildings to be more energy efficient and lower maintenance. We were able to utilize an Ameren program to get a portion of the conversion cost rebated. We continue to examine other ways to make our 55-year-old building and site more energy efficient.



New Site Walkway Lighting at our Main Temple Building

You may have noticed the attractive, new pedestrian friendly walkway lighting from the parking lots to the Gall Sanctuary and May Chapel entrances. This has increased site lighting levels for evening services, meetings, and events, and increased safety and security for congregants and staff. These lights are Phase 1 of a long term plan to replace all site/parking lot lighting as capital funds allow. This walkway lighting also helps highlight our new landscaped planting beds at the Gall Sanctuary's Kreigshaber Lobby entry and the May Chapel - Waldheim/Silverstein Lobby entry. These beautiful beds were planned, planted, and maintained by TI volunteer gardeners in time for the High Holy Days!

Planning for the Future

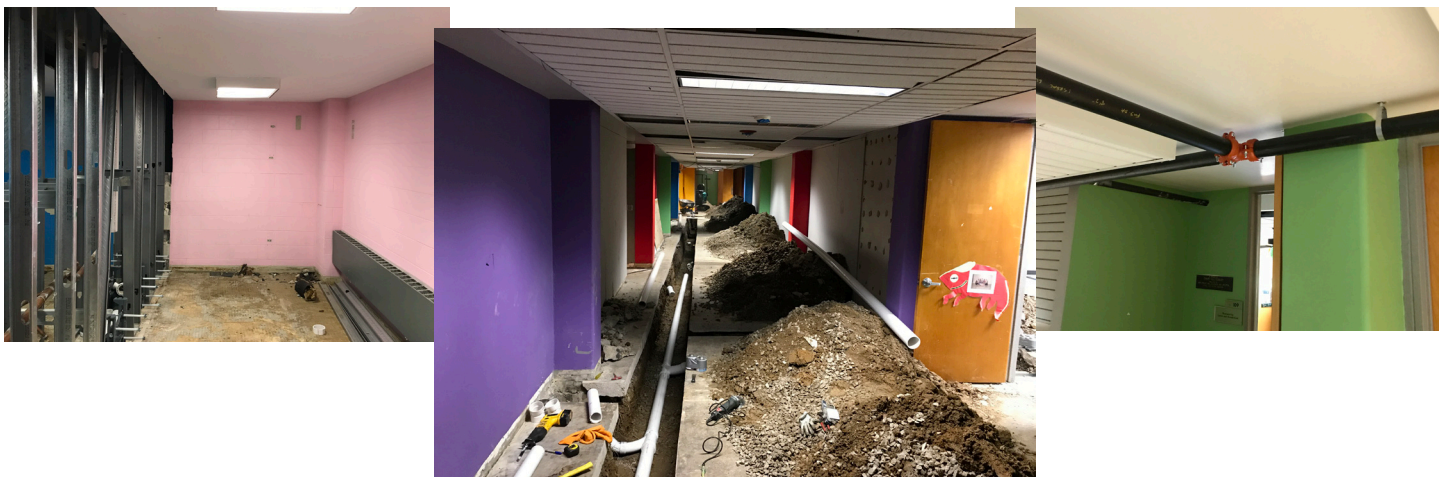
We look forward to completing the funded new security and safety upgrades and the “refresh” of the main office and May Chapel lobby. We continuously examine more efficient maintenance and energy use. We prioritize myriad facilities needs and define projects in order to align them with available funding. Our committee's mission is to plan and phase the continued preservation, enhancement, and modernization of our buildings' spaces, systems, finishes, exteriors, and 21-acre grounds to support and enhance the many educational, religious, and social activities of our congregational family.

Committee Chair: Ted Greenberg

Staff Liaisons: Derrick Bryant and Kim Rivera

Committee Members: David Chassin, Natalie Handelman, Rob Litz, Matt May, Dee A. Mogerman, and Arnold Spirtas

COMMITTEE REPORTS



Above: Goldstein Education Building Renovation - Phase 1
Left - Girls' bathroom being gutted
Middle - Piping being installed under hallway floors
Right - Sprinkler system upgrade being installed

HUMAN RESOURCES COMMITTEE

2017 Accomplishments:

The Human Resources Committee's goals and objectives include developing and implementing strategy, plans, and programs to attract, motivate, develop, and retain the best people to further Congregation Temple Israel's mission, as well as to reduce the risk of employment litigation and protect our reputation in the community.

We work closely with the President, Senior Rabbi, and leadership team to provide resources for hiring, coaching, performance goals, and organizational alignment.

Rachel Wallis Andreasson was the Committee Chair until her acceptance of the Executive Director role. We are pleased to announce that Bob Ortvals Jr., a partner at Constangy, Brooks, Smith & Prophete, LLP, is the new Chair. Bob graduated summa cum laude from Bradley University and earned his law degree from University of Missouri - Columbia. Bob practices employment law and will be a tremendous asset leading the HR Committee. Bob and his wife, Kathy, have two children, Noah and Evan. Kathy is a Board member and they have been members of Temple Israel since November 2010.

We also want to thank Burt Garland for his expertise and contributions throughout his years serving on the HR Committee.

Committee Chair: Bob Ortvals, Jr.

Staff Liaison: Rachel Wallis Andreasson

Committee Members: Susan Frager, Burt Garland, Jr., Martha Kreipke, and Jeremy Shook

COMMITTEE REPORTS

TECHNOLOGY COMMITTEE

2017 Accomplishments:

Our technology infrastructure continues to improve through the generosity of our members and the dedication of our team. At this time last year we had begun implementing the live-streaming of services and campus-wide WIFI availability for guests and staff.

Accomplishment 1: Expansion of WIFI service to continue improving coverage in the Education building. As educational tools move more into the wireless realm, our network slows down and we continue to take appropriate steps to mitigate these delays.

Accomplishment 2: Our campus wide network has remained stable with excellent online access. However, even our advanced network cannot compete with the numerous power outages we continue to experience at the congregation.

Accomplishment 3: At this time last year, we had just installed our new phone system and were just getting ready to fully implement the new system. As of today, the system is stable and in full use by the entire campus. This has proven to be a considerable improvement and is well-liked by the employees and volunteers.

Committee Chair: Art Lewis

Staff Liaison: Kim Rivera

Committee Members: Rabbi Michael Alper, Mark Biernacki, Derrick Bryant, David Chassin, Ron Chatmon, Brent Comensky, Ron Falkoff, Sarah Falkoff, Dee A. Mogerman, Debbie Schultz, Mike Shaw, Neil Wolfman

ARTS & ANTIQUITIES COMMITTEE

2017 Accomplishments:

The committee did an extensive review of the Temple's art and antiquities collection. The majority of these pieces had been in storage for many years and were not in good condition. Each piece was researched for its significance, historic, and aesthetic value. Several pieces were identified as ones we did not want to display and had no obligation to keep: these pieces were sold through Link Auction Galleries.

A portion of the money received from the sale was used to reframe and mat many pieces that had been damaged over the years. An art hanging rail system was purchased and installed around the Temple corridors allowing us to easily hang and change out pieces. We are currently in the process of hanging the artwork for the enjoyment of our congregants.

Several pieces of antiquities were discovered as we cleaned out the art storage room. Thank you to Sid Goldstein for helping us identify these objects as pieces of Roman glass which are now on display in the Handelman Gathering Place.

Historical pieces that were found in the storage room were loaned to the St. Louis Community Jewish Archives located in the Brodsky Library at Jewish Federation of St. Louis.

A special thank you to Judy Levy for her leadership and expertise.

Staff Liaison: Rabbi Amy Feder

Committee Members: Sarah Bernstein, David Chassin, Natalie Handelman, Judy Levy, Rob Litz, and Dee A. Mogerman

COMMITTEE REPORTS

ISRAEL ENGAGEMENT COMMITTEE

2017 Accomplishments:

The Israel Engagement Committee continued our efforts to engage the congregation with the land and people of Israel. The goal of the Israel Engagement Committee is to help connect the congregation with Israel. We strive to help the congregation follow the portion of the vision for Temple Israel which states: "Understanding the miracle that is the State of Israel, we shall rejoice in its existence and draw it near to our hearts through ritual, learning, celebration, and pilgrimages for youth and adults alike."

On May 21, 2017, we sponsored our 10th Annual Israel Film Festival where we presented "A Borrowed Identity" and "The Wedding Doll". A wonderful light Israeli dinner was served between both films. This event was co-sponsored with St. Louis Israeli community. Mark your calendars for next year's Israeli Film Festival in spring of 2018 for two more great Israeli films.

Our committee continued to be a co-sponsor of a film at the 2017 St. Louis Jewish Film Festival.

Our committee members are enthusiastic and hard-working toward this goal. Members of the committee also attended various other local Jewish community Israel related activities and events.

Committee Chair: Rob Litz

Staff Liaison: Rabbi Michael Alper

Committee Members: Patty Bloom, Jody Chassin, Amy Cohen, Fred Cohen, Vera Cohen, Jennifer Culp, Pamela Dern, Mary Friedman, Neil Handelman, Earl Kessler, Esther Kessler, Linda Koenig, Jodi Leise, Dr. Jerry Levy, JoAnne Levy, Judy Levy, Cary Mogerman, Dee A. Mogerman, Donald Mogerman, Ron Scharff, Bob Schnurman, Audrey Shanfeld, and Adam Wallis

WORSHIP EXPERIENCE COMMITTEE

2017 Accomplishments:

We organized and hosted a Symphony Where You Worship service that included members of the St. Louis Symphony.

Cantor Patty Kaplan returned as director for the Chavurat Shira volunteer choir.

There continue to be adjustments made to Friday night worship and High Holy Day services so that the experience can be meaningful and welcoming to all.

Committee Chair: Amy Cohen

Staff Liaison: Rabbi Amy Feder

Committee Members: Julie Aronson, Rob Aronson, Fred Cohen, Ellen Deutsch, Sarah Falkoff, Ed Goldberg, Robert Hahn, Karen Knopf, Harry Knopf, Jerry Kraus, Amy Lampert, Judy Levy, Larry Linkon, Cary Mogerman, Hildegard Rochman, Barbara Sandmel, Debbie Schultz, Susan Stiefel, Lynn Wallis, Marlita Weiss, and Michelle Weltman



Above: Left - Symphony Where You Worship, Right - Chavurat Shira Volunteer Choir

COMMITTEE REPORTS

DEVELOPMENT COMMITTEE

2017 Accomplishments:

Temple Israel families are blessed to be a part of a congregation that really is our home, a community made up of people who we are proud to call our friends. Whether we see each other a few times a year or multiple times a week, we know that each member of Temple Israel is someone who we can connect with, talk to, and create meaningful moments with at various stages of our lives. Together we are always developing stronger connections and our committee had a focus to grow this bond and lay the foundation for the future.

Our Annual High Holy Days Giving campaign was co-chaired by Judy & Jerry Levy. We are pleased to have met the \$60,000 goal set by the Board of Trustees. We experienced incredible generosity by so many of you and would like to thank everyone who participated in the campaign. Special thanks to the High Holy Day Giving committee members: Susan K. Goldberg, Sally Heller, Amy Lampert, Rob Litz, Jeffrey Stern, and David Weinstein, alongside our Communications Director, Erin Wolfman May.

Several successful event fundraisers were also held during 2017. The TI Wandering Jews Scavenger Hunt was chaired by Amy Lampert and was a fun evening to socialize and compete with friends. The Royal Shavout Tea Party, chaired by Jessica Litwack, attracted many little princes and princesses for an afternoon of fun and entertainment by Rabbi Amy and other volunteers dressed as famous princesses, as well as a delicious afternoon royal tea party. Our Taste of Tradition Progressive Dinner was chaired by Linda Horwitz and was a great success; members connected over delicious meals in each others homes. A Murder Mystery Experience dinner party and auction was an engaging 'who dunnit' evening (Jonathan Bloom!) with a Hawaiian theme. Attended by 120 guests, this successful evening was chaired by Jayme Fingerman, Amy Lampert, Jennifer Patchin, Debbie Schultz, Christine Schulze, Michele Steinberg, and Michelle Weltman. Stephanie Rhea chaired the Holiday BouTique which attracted many vendors and shoppers. Thank you to our many volunteers and those who attended these events and for a successful and fun year of fundraising and community building.

Ongoing fundraising programs include the Eytz Simcha Celebration Tree, located outside of our main Temple office, in which we honor the special moments in our lives such as birthdays, weddings, anniversaries, and B'nai Mitzvah. The Book of Remembrance, printed for Yom Kippur afternoon services each year, is another opportunity to honor those who have passed, and our Perpetual Memorial and Wall of Honor memorial dedications are also a means of fundraising while honoring loved ones.

On behalf of the committee, we thank everyone who supported our development in 2017 and the many efforts undertaken. The Board of Trustees is so very appreciative and welcomes you to join our committee by signing up to be involved in projects that interest you.

Board Liaisons: Jeffrey Stern and Dr. David Weinstein

Staff Liaison: Rachel Wallis Andreasson



Above: Wandering Jews Scavenger Hunt
Team LAB: Law, Airway & Boogers



Above: Event Committee -
A Murder Mystery Experience to
Benefit Temple Israel

Right - Patty & Jonathan Bloom (He dunnit!)

COMMITTEE REPORTS



Below:
Left - The Shofar Society Appreciation Event
Right - The Eytz Simcha Celebration Tree and leaves



Above:
Left and Middle - Shavuot Royal Tea Party princess sing-a-long
Right - Dinner guests at A Taste of Tradition progressive dinner



MEMBERSHIP COMMITTEE

2017 Accomplishments:

Throughout 2017, we welcomed new members and member families to Congregation Temple Israel. The new members ranged from empty nesters to new residents in St. Louis. Both our new and current members have also been extremely active in Temple life, eager to attend many of our events, and selflessly volunteering for service at our 31st annual Thanksgiving Dinner for Those in Need, baking pies at Pies with a Purpose, ushering at Shabbat services, taking classes with our rabbis, and so much more.

We spent a great deal of time reviewing our past offerings for new members and are working on developing a mentoring program in 2018 for existing volunteer members to partner with new members to answer questions they might have, as well as to attend TI activities together.

We have made a concerted effort to update all of our membership records to make sure that we have current family information. This included updating our internal new member procedure paper flow.

Opportunities for members to engage during the year included our annual Shofar Society Appreciation event, Whiskey & Wisdom, our 4th annual Women's Seder, Wandering Jews Scavenger Hunt, A Murder Mystery Experience to Benefit Temple Israel, and many more.

Committee Co-Chairs: Neil Marglous

Staff Liaison: Rachel Wallis Andreasson

Committee Members: Cathy Goldsticker, Amy Lampert, Dr. Jerry Levy, Andrew Olschansky, Kathy de la Garza Ortobals, and Amanda Packman

COMMITTEE REPORTS

COMMUNICATIONS COMMITTEE

2017 Accomplishments:

Website Refresh: Our 6-year-old website was in desperate need of an update to the look and feel, and the change is dramatic in both its beautiful, contemporary design as well as the feedback we continue to receive on the simpler navigation and overall user-friendliness. Additionally, the site now can be viewed and used on a range of mobile devices which enhances the experience and allows users to quickly make payments, donations, and register for events online with ease. Finally, we built in systems for analyzing site usage and traffic. With this info, we will be able to consistently evaluate and improve our users' experience. This major project was led by Communications Director Erin Wolfman May who did a masterful job to ensure the website was done well and completed on time and within budget.

Another neat addition to the website is our new blog. The blog is a place where congregants, volunteers, lay leaders, and staff can submit a blog post to share with the congregation. One of our latest member blog posts was submitted by Amanda Packman, TI congregant and Trustee, and is titled, "The Legacy of my Great-Grandfather, Mike Fadem." You can read this lovely remembrance at www.ti-stl.org/Blog.

2-Page Spread in St. Louis Jewish Parents Magazine - July 2017 Edition: In addition to the numerous ads to announce events and holiday information, this year we also produced a 4-color, 2-page spread in the July edition of St. Louis Jewish Parents Magazine. One page featured Deutsch Early Childhood Center; the other featured Temple Israel Religious School. Both had the new website look and were worded in a friendly and welcoming manner with pictures that showcased our students' diversity.

We've had great stories to tell this year: Our public relations efforts are paying off - our coverage this year in the Jewish Light as well as other newspapers and magazines has been strong and consistent. As this year ends, two stories we're promoting include our new executive director, Rachel Wallis Andreasson, as well as the cost savings and energy efficiency we've gained by replacing all 1,200 fluorescent lighting with LED bulbs. Member Tami Martens encouraged TI to participate in Ameren's Direct Install (SBDI) Incentive Program that helped to reduce the upfront costs required to complete this energy saving lighting project that now also returns a significant reduction in energy costs each month. Martens's company, TechSmart Energy, made the changes and is helping us coordinate with Ameren to maximize publicity.

Condolences: We are saddened to lose longtime committee member Emily Evans Kline who passed away this past August unexpectedly and much too soon. She was sharp, witty and had a wealth of marketing expertise and vision that she generously shared. May her memory be for a blessing.

Committee Chair: Carla Feuer

Staff Liaison: Erin Wolfman May

Committee Members: Alice Handelman, Patty Bloom, Emilie Fan, Marge Fenster, Amy Fenster Brown, Marcia Figus, Kathy de la Garza Ortobals, Jennifer Patchin, and Mindy Woolf

Right: Homepage of the updated Temple Israel website www.ti-stl.org



COMMITTEE REPORTS

CRAFTING FOR COMMUNITY COMMITTEE

2017 Accomplishments:

Handcrafted Origami Heart Necklaces - We teamed up with the Cancer Support Community of St. Louis to create over 100 necklaces for women receiving chemotherapy for cancer on Valentine's Day. We also made necklaces for the hospital's nursing staff working in the infusion centers. Our hearts carried with them the message that the TI community is sending love and hope that their treatment goes well. For the oncology nurses, we expressed gratitude for their help in fighting cancer.

Handmade Greeting and Note Cards - We continued our support of Card Care Connection, a local organization that delivers handmade cards to hospitalized cancer patients throughout the St. Louis area.

Purim Carnival - We staffed a tattoo booth at TI's successful Purim Carnival.

Handcrafted Hats and Booties - We expanded our repertoire to include both knitted and crocheted hats and booties for premature babies to continue our support of St. Louis Nurses for Newborns.

Handmade Hanukah and Jewish New Year Cards - We continued our tradition of crafting handmade holiday cards for distribution to Jewish US military and to those serving in the Israel Defense Forces (IDF).

Committee Chair: Jody Chassin

Staff Liaison: Rabbi Amy Feder

Committee Members: Rosanne Abrams, Rita Freed, Jan Helfrich, and Jackie Schallert



Above: Left - Handcrafted hats for St. Louis Nurses for Newborns, Right - Origami heart necklaces for cancer patients and nursing staff

USHER COMMITTEE

2017 Accomplishments:

Our High Holy Days ushers were outstanding once again and made every person who came through our doors for services feel welcomed. The group greeted each and every individual with a welcome and a warm smile which showcased Temple Israel's hospitality. Security officers are now present at all Shabbat services.

In addition to the ushers who volunteer during the High Holy Days, the committee also works to ensure that there are ushers at all Shabbat services. Ushers include TI members, Trustees, and the families of Religious School students preparing to become B'nai Mitzvah.

Committee Co-Chairs: Joelle Biernacki and Mark Biernacki

Staff Liaison: Rachel Wallis Andreasson

COMMITTEE REPORTS

SOCIAL ACTION (TIKKUN OLAM) COMMITTEE

2017 Accomplishments:

Temple Israel has a number of different committees that seek to do social action and Tikkun Olam, repair of the world. We are always seeking volunteers to join us for one or many of the mitzvah opportunities that we currently offer, or to help us create something new! This has been a particularly active year of social action done by TI members in the community, including:

TI Service Squad, who volunteer at community events in the St. Louis area. This year we helped the residents of Covenant Place pack and move facilities, cleaned and restocked shelves at the Harvey Kornblum Jewish Food Pantry, packed up the Deutsch Early Childhood Center in advance of the facility improvement project that took place over the summer.

Chair: Neil Marglous

Supported refugees - TI volunteers met with and raised funds for a local Syrian family, as well as served meals and provided support and goods for the International Institute of St. Louis.

Staff Liaisons: Rabbi Amy Feder and Jody Gerth

Pies With a Purpose baked nearly 500 pumpkin pies for the Harvey Kornblum Jewish Food Pantry and for the TI Thanksgiving Dinner for Those In Need.

Co-Chairs: Erin Schneider and Angie Stern

Thanksgiving Dinner for Those in Need, which this year invited more than 500 guests to enjoy a delicious, beautiful meal the night before Thanksgiving, and provided them with clothes and food to take home.

Co-Chairs: Sarah Falkoff and Jayme Fingerman

Mitzvah Bakers, a new group who gather to bake Challah and sweets enjoyed weekly by the TI community at Onegs and other events.

Co-Chairs: Jayme Fingerman and Debbie Schultz

Challah Baking Chair: Kathy Ortbals

TI's partnership with Monroe Elementary School, which supports an elementary school in a low-income part of the City of St. Louis. Twenty volunteers tutor children each week at Monroe. We have collected snacks for Monroe's preschool classes, Halloween candy and costumes, toys for a Holiday Store, crayons and activity bags for the preschool, and more. We helped plan and execute Career Day, Field Day, and Trunk or Treat. Together, we are making a difference at Monroe and look forward to making an even bigger impact next year.

Co-Chairs: Liz Buchman and Susan K. Goldberg

Mitzvah Garden, where fresh produce is cultivated at TI by members and donated to the Harvey Kornblum Jewish Food Pantry.

Chair: Lois Perryman

Social Action (Tikkun Olam) Committee Chair: Neil Marglous

Staff Liaison: Rabbi Amy Feder



Above (Left to Right): Mitzvah Bakers, Thanksgiving Dinner for Those in Need, TI's Service Squad, Field Day at Monroe Elementary School

COMMITTEE REPORTS

DEUTSCH EARLY CHILDHOOD CENTER PARENT COMMITTEE

2017 Accomplishments:

Family Night at the Magic House - We hosted a community building event/fundraiser at the Magic House in February. We welcomed over 60 DECC families at the Magic House and had it all to ourselves. It was a great way to get together with old friends and meet new friends, as well as enjoy one of St. Louis's great places for kids! We are planning to do this event again on February 11, 2018.

Mitzvah Committee - 2017 was a big year for the DECC Mitzvah Committee. In the spring, we completed our 2016-17 Mitzvah-A-Month program. We made very large in-kind donations each month that included:

January: The Harvey Kornblum Jewish Food Pantry (toothbrushes/toothpaste and dental hygiene products)

February: Monroe Elementary School (school snacks)

March: NCJW Back-to-School Store (tissue boxes)

April: Monroe Elementary School (art and classroom supplies)

*May: Monroe Elementary School (summer kick-off baskets)

**The summer kick-off Mitzvah project was planned and funded by the Parent Committee. We purchased materials such as snacks, sidewalk chalk, bubbles, coloring books, and crayons, and set them out on the Edison Bridge where our DECC Pre-K students were given a beach bucket to fill with whatever items he/she wanted to give to a Monroe preschooler. Each bucket was complete with a "Happy Summer" note signed by our students.*

The Mitzvah work for the 2017-18 school year is off to an equally strong start thanks to our committee chairs, Cristina Tash and Jennifer Sonneland, who've already done such a great job helping to raise over \$800. We also just completed a very successful snack drive for the month of October to benefit Monroe Elementary School students, and we've also collected toys for our Holiday Store for Monroe families.

Back-to-School Kickoff Event - Due to the construction at the Preschool over the summer, we could not do our normal Popsicles on the Playground event. Since school was starting late and we were not sure if the playground would be safe, we planned an event off site at Beirne Park. We had a snow cone truck and surprise visits from many of the teachers and staff. We had an amazing turn out and it was a great way to kick off the year!

Committee Co-Chairs: Tracy Goldberg-Gross and Jennifer Soshnik

Staff Liaison: Leslie Wolf

Committee Members: Sarah Levinson Bauer, Andranique Harrison, Sarah Kovenach, Jessica Litwack, Jennifer Patchin, MaryAnne Sabin, Stacy Smart, Jennifer Sonneland, Cristina Tash, Sam Wendling, and Heather Zajarias



Above: Reading, dancing and music, art, Muscle Room time, and all of the other amazing activities at DECC, made possible in part by the fundraising efforts of the Parent Committee

COMMITTEE REPORTS

TEMPLE ISRAEL FEDERATION OF TEMPLE YOUTH (TIFTY) COMMITTEE

2017 Accomplishments:

This year has been primarily about reestablishing and rebuilding. We have new Officers and a new Youth Group advisor. One of the main focuses we have had throughout the year is recruitment and figuring out how we can get more teenagers to take a more active role in the TI community.

Religious activities: We helped to lead the Children's services during the High Holy Days. Our Religious and Cultural Vice Presidents, Jillian Wolfman and Danielle Goldberg, play music during Friday night Shabbat services, and many other members also help on Friday nights and in Religious School every Sunday.

Social activities: We traveled to Camp Wyman to do a ropes course, went bowling at Olivette Lanes, hosted a Halloween lounge night and told spooky stories, hung out at the movies, and had a Sukkot campfire with s'mores.

Tikkun Olam activities: The Youth Group is always motivated to help in any events and projects at Temple Israel. We held a book drive for a local charter high school to fill their empty library, and made tied fleece blankets together to donate to people in need.

TIFTY Board President: Josh Thomeczek

TIFTY Board: Eric Biernacki, Danielle Goldberg, Zoe Hahn, Harley King, Donovan Moore, Julia Smotkin, and Jillian Wolfman

Staff Liaison: Galve Deleste



Above: Left - 2017 Confirmation Class enjoying some time together
Right - TIFTY Hanukkah in July campfire event

BOY SCOUT TROOP 11 COMMITTEE

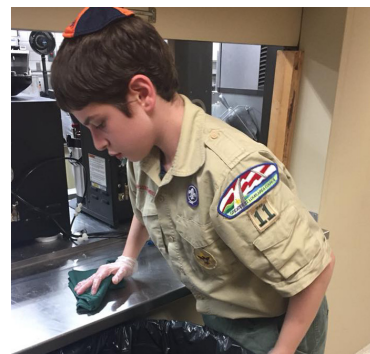
2017 Accomplishments:

- We increased membership by 25%. Three of our new Scouts are members of Temple Israel.
- We rebuilt the Scout Craft Area at the Edison Retreat Center, a \$2,000 project accomplished with donations.
- The Scouts won first place at the Fall Camporee beating out sixteen other Troops. This was the Troop's first 1st place finish in 97 years.

Committee Chair: James Rothberg

Committee Members: Andy Fredman, Marvin Goldfarb, Jeff Osborn, and Art Silverman

Staff Liaison: Rabbi Michael Alper



Above: Boy Scout helping with clean up during TI's 31st Annual Thanksgiving Dinner for Those in Need

COMMITTEE REPORTS

ADULT EDUCATION COMMITTEE

2017 Accomplishments:

This has been a year where Jewish education for adults has continued to thrive at Temple Israel. Each week, we have three regular standing adult education classes: an Introduction to Judaism class Monday mornings, a Torah study on Tuesdays at lunch, and a Bible study on Saturday mornings. We also hosted the regional Union for Reform Judaism's Introduction to Judaism class in the fall. Our adult education courses are designed based on the needs and interests of our congregants; when congregants present subjects they wish to learn, or ways to engage in out of the box Jewish learning, we create opportunities based on their interests. This has been shown in programs such as Whiskey & Wisdom, Torah and Takeout, Dinner, Drinks, and Dough, and several of our interfaith education engagement programs.

Committee Co-Chairs: Bob Schnurman and Jeffrey Wilson

Staff Liaison: Rabbi Michael Alper



Above:

Left - The Way Into Torah weekly study group

Right - Judaism for Beginners class - summer classes included special guest rabbis from around the community

NEW MT. SINAI CEMETERY ASSOCIATION

2017 Accomplishments:

In 2017, New Mt. Sinai continued efforts to expand its role in the community.

In May, members of the St. Louis Symphony and Chorus performed a free concert in the Community Mausoleum.

The Temple Israel Boy Scouts and other Scouting groups decorated the graves of more than 700 veterans buried at the cemetery.

The annual High Holy Days Memorial Service was held to honor the memory of the 11,000+ people who are interred at New Mt. Sinai Cemetery.

In November, the St. Louis Chamber Chorus performed a concert to a sold-out audience.

Members of Temple Israel serving on the board of the Cemetery Association: Neil Handelman, David Eidelman, Jim Eiseman, Lou Loebner, Bob Ortvals Jr., Norman Roth, Randall Scherck, and Art Silverman

Staff Liaison: Kim Rivera

AFFINITY GROUPS

AFFINITY GROUPS AT TEMPLE ISRAEL

An affinity group is a group of Temple Israel members who gather together based around a shared interest or common goal. If you are interested in joining or forming a new affinity group at Temple Israel, please contact Rachel Wallis Andreasson, Executive Director, at randreasson@ti-stl.org or **314-548-9743**.

WOMEN'S CONNECTION

2017 Accomplishments:

This year, Women's Connection hosted their 4th annual Women's Seder during Passover. More than 100 women from the Temple Israel community and beyond enjoyed a traditional Seder meal, four cups of wine, and desserts, while using a special Haggadah designed just for this Seder. This year's Seder again included pauses for table conversation, where attendees shared their personal stories of the phenomenal women who have shaped their Judaism, paving the way for their own holiday traditions. And of course, fabulous music filled the Shoenberg Foyer, led by Rabbi Amy Feder and by musician and new TI member Sharol Brickman on acoustic guitar. Guests accompanied each tune with table top drum beats and a little harmony help from a few members of TI's Chavurat Shira choir who were in attendance. The room rang with joy and togetherness, while we all celebrated the Seder tradition in creative and inspirational ways.

Committee Co-Chairs: Stephanie Greenberg, Jodi Kaplan, and Martina Stern

Staff Liaison: Rabbi Amy Feder

Right: 4th Annual Women's Seder hosted by Temple Israel's Women's Connection affinity group



LGBTQ AFFINITY GROUP

2017 Accomplishments:

This committee is working to create opportunities for the LGBTQ community at Temple Israel to connect and grow. Our desire is to make it apparent to the TI community and beyond how warm and welcoming this congregation is.

This was the first year for our new LGBTQ affinity group. We held a kickoff event at Blueberry Hill in the Delmar Loop where we enjoyed good conversation and a fun time as we started our new journey together.

We also met at the Tivoli theatre during the St. Louis Film Festival for a showing of the film BECKS, a film created by past Temple Israel member Liz Rohrbaugh. The award winning movie starring Mena Suvari has LGBTQ themes and took place partly in St. Louis.

We are looking forward to growing the group in the year ahead.

Committee Co-Chairs: Louise Losos & Beth Wiggins

Committee Members: Heather Beck, Meredith Elkins, and Pepe Finn

Staff Liaison: Rabbi Amy Feder



Above: Temple Israel LGBTQ affinity group and Temple members at the 2017 Pridefest Parade

AFFINITY GROUPS

INTERFAITH AFFINITY GROUP

2017 Accomplishments:

Interfaith Inclusion Leadership Initiative: In the summer of 2017, Temple Israel applied for and was selected to partake in the Interfaith Inclusion Leadership Initiative from Interfaithfamily.com. This is a cohort of Jewish institutions across the country that are choosing to actively make their communities more inclusive of interfaith families. As a member of the cohort, TI's Interfaith Outreach Coordinator and the rabbis participate in monthly webinars and are being coached by the director of the initiative to help reach the interfaith outreach goals of TI. This is a yearlong program.

Interfaith Couples Night Out Series: In September we kicked off our Interfaith Couples Night Out series with a "sip and paint" event at TI. About 30 people attended and met other interfaith couples, designed and painted their own Shalom/peace themed wood signs, and enjoyed food and drink. In November we had our second night out at Urban Chestnut in the Grove. Several interfaith couples attended new connections were made while enjoying some local beer. We will continue these Interfaith Couples Nights Out in 2018.

Interfaith Shabbat Dinners: In 2017 we had two Interfaith Shabbat Dinners hosted by interfaith couples from TI; interfaith couples attended, and everyone brought a dish to share. We observed Shabbat while having meaningful discussions led by Rabbi Michael Alper.

Review of Website and Other Materials: The Interfaith Outreach Coordinator completed a review of the temple's website as well as our membership application. Several changes were made to these materials to make them more accommodating and welcoming to interfaith couples and families.

Staff Liaison: Jody Gerth

Right: Interfaith couples enjoying a night out at Urban Chestnut as part of our Interfaith Couples Night Out ongoing series



TI GARDENERS

2017 Accomplishments:

The gardening group worked very hard this summer to clean out and replant several areas around our campus. The new gardens provide a beautiful warm welcome to all who approach our building.

Staff Liaison: Rachel Wallis Andreasson

Gardeners: Jayme Fingerman, Josh Fingerman, Bob Goldsticker, Cathy Goldsticker, John Lamberg, Judy Lewis, Art Lewis, Cheryl Perlstein, Larry Perlstein, and Jeffrey Stern



Above: Gardening volunteers beautifying the Temple grounds for High Holy Days

2017 CONTINUING SYNAGOGUE SUPPORT

The following members of our Rabbis' Circle and Shofar Society voluntarily contribute at levels that exceed standard dues. Their generous gifts represent almost half of our annual revenue from synagogue support, helping us to bridge the gap between dues income and operating expenses and enabling us to welcome all who seek to join our congregation, regardless of their financial means.

We extend our sincere gratitude to our Rabbis' Circle and Shofar Society members for their generosity. If you would like to join the Rabbis' Circle or Shofar Society, please contact Rachel Wallis Andreasson, Executive Director, at randreasson@ti-stl.org or **314-548-9743**.

As of November 30, 2017.

RABBIS' CIRCLE

HILLEL

Thomas & Rachel Wallis Andreasson
Sam & Marilyn Fox
Irving & Susan Levy

AKIBA

June Bierman
Pamela Dern
Eugene & Lee Deutsch
Jack & Ellen Deutsch
Jeremy & Marni Deutsch
Hope Edison
Allan & Susan Epstein
Judy Gall

Paul & Susan Goldberg
Morton Green
Earl & Essie Kessler
Howard Lesser
Jerry & Judy Levy
Michael & Felice Lowenbaum
Cary & Dee Mogerman
Jay & Heather Padratzik

Noma Simon
Bob Stone
Adam & Emily Wallis
Jason & Kim Wallis
Lynn Wallis
Peter Weiss & Barbra Horn
Vivian Zwick

SHOFAR SOCIETY

TEKIAH GEDOLAH

Gordon & Terry Bloomberg
Bettie Gershman
Lois Goldberg

Kenneth & Helen Goldstein
Linda Hyken
Nancy Kalishman

Gary & Frances Lazaroff
Herman & Hildegard Rochman
Joseph Silverman

TERUAH

Leonard & Audrey Adreon
Harold & Elaine Blatt
Donald & Marilyn Blum
Eric & Elaine Bly
Jonathan & Jennifer Deutsch
Henry & Ellen Dubinsky
Edward & Dorette Goldberg
Joe & Abby Goldberg

Karole Green
Howard & Alice Handelman
Neil & Natalie Handelman
Norman & Barbara Hausfater
Eugene & Joan Kraus
Constance Levy
Mont & Karen Levy
Larry & Liz Linkon

Kenneth & Loren Ludmerer
Lawrence & Patricia Malashock
Neil & Ricki Marglous
Joy Melman
Steve & Leslie Melnick
Aaron & Frala Osherow
Bruce & Caryn Sandweiss
Laurence Schiffer

Daniel & Joanne Schwartz
Arnold & Sandra Spirtas
Leonard & Martha Weinstock
Marlita Weiss
Norman & Barbara Wielansky



SHEVARIM

David & Martha Aronson
Keith & Hui Hua Bernstein
Robert & Susan Bernstein
Ivan & Linda Blumoff
Robert & Ellen Brin
Amy Cohen
Edward & Carol Cohen
James & Carolyn Eiseman
Rita Eiseman
Charles & Karen Elbert
Gary & Robin Feder
William & Dorothy Firestone
Doris Fishman
Fred & Barbara Flegel
Jeff & Lotta Fox

Sarijane Freiman
Richard Greenberg & Claire Schenk
Gary Handelman
David & Barbara Kantrovitz
Jerome & Linda Kraus
Lois Levin
Thomas & Adele Lewis
Michael & Lynne Lippmann
Mark & Wendy Ludwig
Debbie Manne
Shelley Marglous
Dorothy Meyerson
Leslie Nackman
Jan Nykin
Jules & Joyce Pass

Mitchell Platin & Madhavi Kandula
Melvin & Aileen Rabushka
Robert & Mary Rosenblum
James Schiele
Robert & Nancy Spewak
Richard & Lecie Steinbaum
Arnold & Dotty Tepper
Jim Thomeczek & JoAnne Levy
Jason & Susie Turkin
Chad & Sarah Wallis
David & Liz Weinstein
Howard & Bonnie Weiss
Michael & Diane Weiss
Stephen & Linda Wielansky
Don Wiley

TEKIAH

Stewart Albert
Scott & Robin Alton
Arthur & Marian Auer
Fred & Joy Balis
Barry & Susan Barber
Marcia Bernstein
Mark & Joelle Biernacki
Lawrence & Janice Brody
Jeff Brown & Amy Fenster Brown
David & Jody Chassin
Ronald & Cheri Chod
Darryl & Kathy Cohen
Irvin Davis
Michael Dern
Ryan & Laura Fields
Terrence & Pepe Finn
Ed & Susan Fliesher
Gary & Joyce Follman
Shanon & Naomi Forseter
Charles & Elaine Fremder
Robert & Mary Ellen Freund
Milton & Eleanor Fry
Arthur Gale
Burton Garland, Jr. & Amy Garland
Leonard Gaum
Robert & Cathy Goldsticker
Ted & Laura Greenberg
Sandra Greenberg
Ronald & Jan Greenberg
Robert Hahn & Amy Knoblock-Hahn

Claudia Hall
Harvey & Judy Harris
Arnold & Myrna Hershtman
Theodore & Suzanne Hoffman
Philip & Linda Horwitz
Warner & Helane Isaacs
Dale & Marcie Kalina
Michael & Jodi Kaplan
Jonathan & Sally King
Mark & Nancy Kodner
Richard & Lisa Kraner
Amy Lampert
Jayne Langsam
Greg & Aly Levine
Robert & Susan Levin
David & Elayne Lieberman
David & Judith Lipsitz
Rob & Nancy Litz
Louis & Carole Loebner
Daniel & Lisa London
Susan & William Moriconi
Joseph & Carolyn Losos
Louise Losos & Beth Wiggins
Donald & Sallie Mogerman
Eric Newman
Dolly Newport
Bob & Kathy Ortvals
Michael & Diane Packman
Laurence & Cheryl Perlstein
Troy & Dana Pohlman

Paul & Judith Putzel
Steven & Karla Rosenblum
James & Diana Rothbarth
Marcos & Cathy Rothstein
Norman & Michele Roth
Jeff & Amanda Winnick
Norma Scallet
Howard Schlansky & Carol Rubin
Debbie Schultz
Bob & Susie Schulte
Julian & Helen Seeherman
Avery Seidel
Bradley & Deborah Shanker
Walter & Jennifer Shifrin
Jeremy & Beth Shook
Marcee Silverstein
Robert & Elizabeth Snidman
Judith Stenzel
Jeffrey & Martina Stern
Cary & Helen Stolar
Mark & Jane Tucker
Peter & Susan Tuteur
Scott & Rita Waldman
Richard & Jane Wasserman
Joshua Badders & Pamela Becker Weilitz
David Weiss & Bobby Sanderson
Edward & Barbara Weiss
Terry & Phyllis Weiss
David & Karen Weller

2017 ANNUAL HIGH HOLY DAYS GIVING

Received as of November 30, 2017.

Stephen Ackerman	Jack & Ellen Deutsch	Ralph & Shirley Grosberg	David & Elayne Lieberman
Leonard & Audrey Adreon	Tom & Kathy Dewoskin	Daniel Grossman	Wayne Kaufman & Gloria Lieberman-Kaufman
Michael Alper & Amy Feder	Danielle Dub	Paul & Carol Gusdorf	Larry & Liz Linkon
Thomas & Rachel Wallis Andreasson	Gary & Irina Dubinovsky	Lev Guter & Katie Rice-Guter	Michael & Lynne Lippmann
Harriette Arkin	Hope Edison	Robert Hahn & Amy Knoblock-Hahn	Rob & Nancy Litz
David & Martha Aronson	James & Carolyn Eiseman	Gary Handelman	Daniel & Lisa London
Randy & Cathy Arst	Melvin & Lorraine Elbein	Howard Hearsh	Louise Losos & Beth Wiggins
Brad & Alissa Arst	Allan & Susan Epstein	Lisa Hirshberg	Michael & Felice Lowenbaum
Joshua Badders & Pamela Becker Weilitz	Beverly Faber	Jeremy Hodess & Christine Schulze	Kenneth & Loren Ludmerer
Igor & Raisa Belotserkovsky	Bryan Fadem	Philip & Linda Horwitz	Mark & Wendy Ludwig
Alex Belotserkovsky	Ron & Sarah Falkoff	Dale & Marcie Kalina	Jordan Mandel
Alex & Cynthia Berger	Chris & Emilie Fan	Nancy Kalishman	Franklin & Barbara Mange
Robert & Patricia Bernstein	Gary & Robin Feder	Earl & Essie Kessler	Ben & Margot Manheimer
Marcia Bernstein	Marge Fenster	Michael & Amanda Klopfenstein	Debbie Manne
Scott & Jennifer Bernstein	Aaron & Sandra Fenster	Harry & Karen Knopf	Neil & Ricki Marglous
Rob & Anna Bertman	Michael & Carla Feuer	Richard & Susan Kofkoff	Shelley Marglous
Jessica Billhymmer	Mitchell & Jayme Fingerman	Alene Kopolow	Sidney Martin & Marjorie Ross Martin
Maxine Blatt	Ed & Susan Fliasher	William & Peggy Kornfein	Betsy Mehlman
Les & Ruth Block	Gary & Joyce Follman	Edward & Judith Koshner	Dorothy Meyerson
Ivan & Linda Blumoff	Julius & Susan Frager	Eugene & Joan Kraus	James & Sheila Mills
Sharol Brickman	Sarijane Freiman	Jerome & Linda Kraus	Cary & Dee Mogerman
Robert & Ellen Brin	Charles & Elaine Fremder	David & Martha Kreipke	Jan Nykin
Belinda Brin	John & Annette Fudenberg	Amy Lampert	Drew & Julie Olschansky
Donna Brodsky	Judy Gall	Bonnie Lander	Robert & Lori Ortvals
Jeff Brown & Amy Fenster Brown	David & Sabina Garfinkel	Gary & Frances Lazaroff	Bob & Kathy Ortvals
Craig & Liz Buchman	Leonard Gaum	Benjamin & Lois Lefton	Amanda Packman
David & Jody Chassin	David Geddes & Sheila Stanton	Joy Lending	Jay & Heather Padratzik
Edward & Carol Cohen	Paul & Susan Goldberg	Jeff & Louise Levine	Todd & Yelena Press
Stanley & Phyllis Cohen	Edward & Dorette Goldberg	Ellen Levy	Ella Raber
Peter & Gisela Cohen	Doug & Liz Goldenberg	Irving & Susan Levy	Jake & Leslie Reby
Harold & Paula Colton	Ben & Taryn Goldstein	Jerry & Judy Levy	Lisa Reed
Richard & Mary Dalton	Ralph Goldsticker	Robert & Marjie Levy	Andrew Rehfeld & Miggie Greenberg
Pamela Dern	Robert & Cathy Goldsticker	Constance Levy	Herman & Hildegard Rochman
David & Beth Deutsch	Morton Green	Art & Judy Lewis	Tom Rosenfeld
Jack & Ellen Deutsch	Richard Greenberg & Claire Schenk	Thomas & Adele Lewis	Jim & Dana Rothberg
Jeremy & Marni Deutsch	Sandra Greenberg	Joe & Minnette Liberman	
Jonathan & Jennifer Deutsch	Ted & Laura Greenberg		



2017 ANNUAL HIGH HOLY DAYS GIVING

Tim & Marla Ruff	Avery Seidel	Arthur & Susan Stiefel	Michael & Diane Weiss
Jean Sachs	Jason & Julie Shanker	Bob Stone	Sanford Weissman
Barbara Sandmel	Mark & Carol Shook	Jim Thomeczek & JoAnne Levy	David & Karen Weller
Bruce & Caryn Sandweiss	Jeremy & Beth Shook	Peter & Susan Tuteur	Stephen & Linda Wielansky
Ron & Darcy Scharff	Bernadine Shuman	Ronald Van Fleet & Sally Heller	Kenneth & Eva Wilde
Laurence Schiffer	Noma Simon	Mike Vredenburg & Rebecca Rubin-Schlansky	Brett & Kimberly Wolff
Jerome Schneider	Saline Spencer	Lynn Wallis	Fran Zamler
John & Erin Schneider	Robert & Nancy Spewak	Andrew & Amy Weinhaus	Charles Zugerman
Debbie Schultz	Arnold & Sandra Spirtas	David & Liz Weinstein	
Daniel & Joanne Schwartz	Michael & Michele Steinberg	Leonard & Martha Weinstock	
Audrey Shanfeld	Jeffrey & Martina Stern		

SPECIAL OPPORTUNITY TO HONOR ANY OF OUR INCOMING/OUTGOING BOARD MEMBERS OR AWARD RECIPIENTS WITH A TRIBUTE DONATION IN THEIR HONOR

Full Slate of Nominees on page 3.



ANNUAL MEETING TRIBUTE FORM

I/We join Temple Israel in honoring our incoming/outgoing Board members and award recipients with the enclosed tax deductible donation.
(Please list names of those you wish to honor and remit with payment to Congregation Temple Israel - PO Box 790379 St. Louis, MO 63179-0379)

In honor of: _____

This gift is from: _____

Donation amount of \$ _____ Check enclosed (payable to Temple Israel)

Please charge my credit card: _____ MasterCard _____ Visa _____ Discover ☐ Add 3% to cover credit card fees

Account #: _____ Exp. Date: _____ / _____

Name as it appears on credit card: _____

Billing address: _____

City: _____ State: _____ Zip: _____

Thank you for honoring our Temple Israel lay leaders and volunteers.
To make a Tribute online, visit www.ti-stl.org/AnnualMeetingTribute

MISSION

Congregation Temple Israel is a caring, inclusive community committed to living Reform Judaism and participating in the sacred destiny of the Jewish people and Israel through education, worship, and repair of the world.

VISION

Since its founding in 1886, Congregation Temple Israel has been a leading synagogue within Reform Judaism and the United States.

Our legacy is the product of a deep love of God, Torah, and the Jewish people, and of the generosity, commitment, and vision which such love engenders. Continuing our pursuit of excellence and well-being, and building upon our Strategic Plan, the following represents our vision for Temple Israel as we look to the future.

Our caring shall know no limits.

Our inclusiveness shall be unqualified.

Our Judaism shall be living and nourishing to the soul.

Our love of the Jewish people and Israel shall be overflowing.

Our education shall prepare and inspire us to engage in living Judaism.

Our worship shall bring the Divine Presence into our midst and nourish our souls.



View the Annual Report online at www.ti-stl.org/AnnualReport