



Congregation Sons of Israel

THE MYERS FAMILY CAMPUS

CONTINUING THE VISION — BUILDING OUR FUTURE

October 2020 - 13 Tishri - 13 Cheshvan 5781

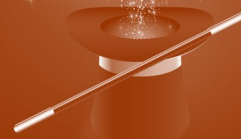


Food Drive

PROJECT EZRA FOOD DRIVE
DONATIONS NEEDED!
SEE PAGE 20



Magic Show



FAMILY- FRIENDLY VIRTUAL MAGIC SHOW!
SEE PAGE 12



Congregation Sons of Israel

1666 Pleasantville Road
 Briarcliff Manor, NY 10510
 Phone: (914) 762-2700
 Fax: (914) 941-3465
www.csibriarcliff.org
info@csibriarcliff.org

OUR MISSION STATEMENT

(adopted 1999, revised 2007):

Congregation Sons of Israel is an egalitarian, Conservative synagogue dedicated to imparting Jewish values and traditions from generation to generation in a welcoming participatory environment. We are a caring community committed to lifelong Jewish learning, the observance of *mitzvot*, meaningful prayer and charitable deeds. We promote spiritual, cultural and social connections within our community, to the State of Israel, and to Jews worldwide.

Rabbi Steven C. Kane

Rabbi@csibriarcliff.org

Cantor Jeffrey Shiovitz

jshiovitz@gmail.com

Educational Director:**Naomi Elyachar**

Naomi.elyachar@csibriarcliff.org

Synagogue Director:**Ellen Green Johnson**

ellen@csibriarcliff.org

OFFICERS:**Clare Rosen, President**

President@csibriarcliff.org

Robin Ginsberg, VP**Jill Greenstein, VP****Mark Rosenberg, VP****Fred Schulman, VP****Bob Margolies, Treasurer**

Treasurer@csibriarcliff.org

Marc Auslander, Secretary**Steve Bender, IPP**

THE
UNITED
SYNAGOGUE OF
CONSERVATIVE
JUDAISM
בית המדרש החדש



Sukkot & Simchat Torah Services

Erev Sukkot/Kabbalat Shabbat — Friday 10/2 at 6pm

(*) On-Site & Zoom

Sukkot/Shabbat - Saturday 10/3 at 9:30am

(*) On-Site & LiveStream

Sukkot - Sunday 10/4 at 9:30am

(*) On Site & Live Stream

Kabbalat Shabbat/ Shemini Atzeret - Friday, 10/9 at 6pm

(*) On-site & Zoom

Shemini Atzeret - Saturday, 10/10 at 9:30am,

Yizkor will be recited.

(*) On– site & Live Stream

Simchat Torah - Saturday, 10/10 at 7pm.

(*) On-Site & Live Stream

Simchat Torah - Sunday 10/11 9:30am

(*) On - Site & Live Stream

(*) Please respond to Rabbi Kane's emails if you wish to attend on - site services. Thank you!

FROM THE RABBI

Steven C. Kane



There is no doubt that I fell in love with Judaism at camp. It began when I was 11 years old at Olin-Sang Ruby Union Institute, also known as Oconomowoc, the Midwestern camp of the Reform movement. After spending several summers there as a camper, I became a staff member during my early years of college. Eventually I would move on to Camp Ramah in Wisconsin (where Judy and I met), and later Camp Ramah in Nyack and then the Berkshires. What was most memorable for me at all those Jewish camps was observing *Shabbat* and having *tefilot* (services) outside. I even helped construct outdoor *tefilah* areas in Ramah Wisconsin and the Berkshires. There is something unique and inspiring about prayer in the midst of the beauty of nature.

When I came to CSI the "new" addition was just being completed, the center of which was a unique and award winning sanctuary. I knew of no other sanctuary that had the possibility of opening its outer walls like ours. While we were still inside, it had the feeling of being outside when the walls were up. Who knew that years later being able to have our walls up would be the key to holding services during this pandemic! Indeed we were one of the few non-Orthodox congregations in Westchester that held in person services during the High Holidays, and having the walls open for the first time on the holidays helped make services particularly special.

Yet as nice as it was to have the outer walls of the sanctuary open on *Shabbat* and the holidays, it was equally inspiring to hold *Kabbalat Shabbat* services in July and August on our Organic Farm. Each week we gathered on the benches near the community farm section and welcomed *Shabbat* (we stopped when it began to get dark before we would finish). Everyone who came each week seemed to feel that there was something particularly beautiful about davening on the Farm. It was, I believe, the same feeling that I and many others experienced at Jewish summer camp. We were fortunate each week to have lovely weather and being in nature, both the sights and the smells, contributed significantly to that feeling.

This was one of the silver linings of the pandemic. It forced us outside Friday nights and helped to consecrate the area of the Farm in which we prayed. By using it for services for so many weeks we were reminded of how meaningful it was to welcome *Shabbat* outside, and I was able to recapture some of the same inspiration that I first found at 11 years of age at camp. Now we refer to it as our outdoor *tefilah* area, and we will return to it in the spring once the weather becomes warm again and the sun sets late.

In the Psalm for *Shabbat* we say *mah gadlu ma'asecha Adonai*, how wonderful are your works, *Adonai*. When we can experience God's works by being truly in their midst, we can fall in love with Judaism all over again.

L'hitraot,

Rabbi@csibriarcliff.org



TRULY A SWEET NEW YEAR

Lemonade from Lemons

According to most scientists, human beings are the most adaptable of all living creatures. Our capacity to adjust to changing conditions has resulted in our survival.

In his book about the High Holy Days, Rabbi Alan Lew calls our preparation for the Days of Awe as a “journey of transformation.”

Adaptability and transformation. These are what have guided CSI in its plans for welcoming in the new year, 5781. Our Board, professional staff, and committees worked diligently for many weeks to modify the services and the building into a welcoming and safe space in spite of Covid 19.

Turning the negative into the positive—making lemonade from lemons—is a theme. In Rabbi Kane’s sermon, he recounted violinist Itzhak Perlman’s brilliant playing of a sonata even though one of his violin strings had broken. Twenty-five years ago, when this happened during a Lincoln Center concert, Perlman had declared, “...see how much music you can make with what you have left.” And this is what CSI essentially accomplished this year, figuratively playing an extraordinary solo with only three strings.

All synagogue services were shortened and streamed. Prayer books were distributed to congregants who felt more comfortable watching from home. Along with each *Machzor* was packaged a hand sanitizer and packet of bird seed for *Tashlich*. Those who attended in person received assigned seats; at each one, book and sanitizer awaited. Social distancing was maintained at all times. A separate stand was set up for those reciting *Aliyas*, restricting the Bimah to only one person at a time. Cantor Shiovitz was sheltered within a glass booth, so singing could continue while safety was ensured.

Most strikingly, CSI is fortunate in having two walls which open completely to the outside—our garage walls, we like to call them. Surrounded by nature in all its early autumn glory --grass, shrubs, trees—our spirituality was enhanced as we gazed beyond the *Bimah*. *Shofar* blowing took place outside in the morning and again at the Farm later in the day, when a special family service was held and *Tashlich* took place under a leafy bower.

We’ve now been through more than six months of distress and uncertainty not only from the pandemic but also from racial, economic, and political turmoil. We have been lacking the interactions among family and friends; but through all this, our CSI community successfully pulled together to provide a meaningful and reflective experience. Truly we have turned the negative into a positive, altered our traditions where necessary, and turned some bitter lemons into sweet lemonade.

-Marion Sader

CANTORIAL NOTES

Hazzan Jeffrey Shiovitz



I want you to know that *Sukkot* is my favorite holiday. Yes, it is my Favorite Jewish Holiday! I know I am going out on a limb by saying so. When I was a child growing up in Detroit, we did not have a *Sukkah* and we did not buy a *lulav* and *etrog*. Money was always tight and it was not one of the priorities in our family. We were shul goers and we would go to the *Sukkah* and I would get a chance to shake the *lulav*. The smell of the *etrog* was so sweet and exotic to me. My first real exposure to celebrating *Sukkot* fully was as a Cantorial student at the Jewish Theological Seminary. *Sukkot* was a happening there. I just loved it! I loved the atmosphere and the food and the melodies (many I had grown up with). The singing was wonderful!

In my first congregation in Aberdeen, NJ, I built my first *Sukkah*. I built 9 wooden panels that were 4 feet wide by 7 feet tall. I would bolt them together. I put corn stalks on the top as we were close to farm country, too. I was so proud of my work. The next year I married a local girl, Robyn, I had met who had just come home from college. (Her mother was the director of the Nursery school and did NOT introduce us!) We made the *Sukkah* comfortable. Being an artist, Robyn painted the panels. Each year since then (1983) we have added something onto the panels of our *Sukkah*. Our kids would paint a section each year as they grew up. We would commemorate our trips to Israel with photos. We lost a family friend in 9/11 who was a firefighter and there is a section devoted to 9/11 as a memorial. When Robyn was pregnant with our oldest daughter, Rachel, we were putting up our *Sukkah* as a hurricane was touching down on the Jersey Shore (we lived a mile from the water!) The two of us went out into the storm to take the panels of our *Sukkah* apart and threw them on the ground. Our *Sukkah* has served as a family history for us.

Through the years we have celebrated with gusto! This year will be no exception. However, it will have a tinge of sadness to it. For the first time since we married, almost 37 years ago, we will not have any company. We have always shared our *Sukkah* with our family and friends. Most nights we would have company. Tea and desert late into the night. We will miss that aspect of the holiday. Some years we would have theme nights. We are thinking of having *Sukkot* around the world this year. Each night will be a different ethnic theme (Asian, Thai, Chinese, Mexican, Italian, Indian).

We are blessed to have 2 grandchildren that we can now share our love for the Jewish holidays with. After the seriousness of the High Holidays, *Sukkot* brings us the joy and fun of being Jewish.

Robyn and I wish all of you a *Chag Sameach*.

jshiovitz@gmail.com



“Thank you”



Thank you to all the volunteers who helped distribute 260 *Machzorim* for those who wished to worship from home. Our *Machzor* bags came with a letter from the rabbi, a bottle of hand sanitizer, bird seed for *tashlich* and a wonderful recipe for soup. We hope these items helped you usher in a healthy new year from home.

WE DID IT! Every family/pod was six feet from the next one.

Thank you to Steven Johnson, Ellen's son, for helping her create safe pods by lifting, schlepping and measuring right along side her.

Machzorim and name cards were on each assigned seat, along with hand sanitizer.

Our amazing volunteer ushers together with our security team escorted everyone to their seat and helped clarify the foot traffic pattern and facility use protocols.

Thank you to Jack Zinn for this panoramic photo of the Sanctuary and Social Hall.



FROM THE PRESIDENT *Clare Rosen*



With the High Holidays behind us, I want to celebrate all that we at CSI accomplished during these past couple of months.

If you lift the load with me, I will be able to lift it; and if you will not, I won't lift it. – Bava Kama 92b

Together we have accomplished much by supporting each other and our CSI community. Since the pandemic hit last March, the load has been heavy yet we as a community together have grown CSI to its current vibrancy, imbuing excitement and opportunity for all.

Our High Holiday services would not have been so beautiful and meaningful without the efforts of Rabbi Kane, Cantor Shiovitz and the many learned congregants who davened *Shacharit*, read *Torah*, and *Haftarah*. Our in-person and farm services were equally inspirational.

But behind the scenes and unknown to most were teams of people that met indefatigably for months planning how to reopen the building, hold in-person services safely, rewire the building for Live Streaming, distribute *machzors* for those watching from home, cleaning and sanitizing, designing and setting up socially distanced family pods in the sanctuary, writing and posting signage throughout the building, maintaining ongoing communication regarding COVID guidelines, and meeting with the security staff.

Thank you, Dr. Neil Schluger and Dr. Rick Kay for providing the most up to date medical advice to ensure our health and safety. Thank you, Richard Zuckerman for your technology skills and knowledge. You never say no to a request to investigate the best cameras for our needs, install them and even be our resident camera man during services. Thank you, Mark Rosenberg for heading up our Reopening Task force. You guided us through the understanding how and why we needed to proceed in "certain" ways to open safely. Thank you, all of our High Holiday ushers. You were invaluable to us. Thank you, Ellen Johnson for "everything". Your presence and attention to detail is evident everywhere. Thank you, Rosa for making

sure *everything* is always cleaned and sanitized. Thank you, Irwin Kavy for taking care of even the smallest detail needed to keep the building in tip-top shape. You helped write and receive a security grant, you lead the security team, you make sure we have the necessary PPEs, and are the all around go-to guy. Thank you, Jack Zinn and Marc Auslander for bringing us up to speed with technology. You are our "resident" zoom experts and put endless hours into perfecting our technology use. Thank you, Fred Schulman, Ryna Lustig, Jill Greenstein and David Levitt for helping make our beautiful organic farm prosper so we can give produce to those in our community with "Food Insecurity". Fred's love of the farm and CSI is unmistakable by his generosity and acts of loving kindness. Thank you, Bob Margolies for shepherding us through the transition to ShulCloud. Your tenacity has made the transition smooth. Thank you, Jill Greenstein for facilitating the Education Taskforce and heading the Education Committee, both requiring "new eyes" during COVID. You collaborated with our new NS Director, Naomi Elyachar to open an in-person program for preschoolers on our farm. You also collaborated with Rabbi Kane and Libby Spitzer to design remote RS program. Thank you to Naomi, Libby all the dedicated and caring teachers. It's because of you that our schools are doing well. Thank you, Robin Ginsberg for organizing the liaison phone calls, calls that are so very important to our members. Thank you Andy Polay, from Global Security, for looking out for "our safety". You have definitely become a member of our CSI community and *Shabbat minyan*. And thank you to all the committee chairs and committee members who make sure every day that all aspects of CSI are cared for.

I look forward to "seeing" most of you virtually or in-person in the coming months. CSI is committed to continue to offer you spiritual, learning, and other programs of interest. Please join us.

Clare E. Rosen
CSI President
Clayrcsi@gmail.com



Stay & Play at CSI!

For children ages 12-24 months and their grown-ups

Tuesdays in October

9:15-10:30 a.m.

\$100 for four Tuesdays

(October 6, 13, 20, 27)

EXPLORE, PLAY & LEARN!

- Explore and play with other children
- Learn the routines and structure of a typical preschool classroom while in a safe and fun outdoor setting
- Class materials will be provided

Each family should bring their own blanket to sit on.

All adults must wear masks at all times and will be briefly screened upon arrival. In accordance with CSI Nursery School policy, all children must be up-to-date on their vaccinations.

We hope you can join us!

Click [HERE](#) to register!

Please e-mail naomi.elyachar@csibriarcliff.org with questions.

FROM THE NURSERY SCHOOL DIRECTOR *Naomi Elyachar*



As a first time Nursery School Director, this has been quite a year to prepare for school! When I took this job back in the early spring, the pandemic had been newly declared and many of us thought by the summer, and certainly by the start of school, we would all be back to normal. I went from confidence that we would be past this to fear that I would not be able to do this job to finally realizing that although we would still be in the midst of the pandemic, I could in fact open school in a new way in spite of the circumstances.

In early childhood, educators often use “loose parts.” These are odds and ends you find around the house—bottle caps, buttons, twine, rubber bands, ribbon, clothespins. These materials often seem of no use to adults, but children find ways to play and create with them. Essentially, we have created a school out of loose parts this year. I came to look at our outdoor spaces and determined that we had enough space to have school outside. With the help of our Parent Association, we purchased tents, blankets, and wagons to bring our indoors outside. I counted up how many chairs we had that could be left outside and we moved some tables and other furniture outdoors as well. Our teachers got resourceful and moved furniture and toys from one location to another. We decided our tented areas weren't big enough and fenced additional space around.

Our outdoor classrooms were in essence a bunch of loose parts put together. When I looked around at the end of staff training week, though, it was clear that the whole was much greater than the sum of these parts. The teachers used their creativity and expertise to put these individual materials together as whole outdoor classrooms--not just making the best of a bad circumstance but creating settings that built upon the high quality program we already had in place and making it even better. As part of a congregation and community that sanctifies nature, these new outdoor classrooms fit in so beautifully with our values.

The last element that tied everything together was the people. The teachers aren't just supervising the children play outside--they are teaching and learning outside. They are engaging with materials in new ways. They are making beautiful use of our natural setting and resources and also bringing the same activities they used to do inside to their outside spaces. The spirit and energy when our children and families came back to school was what had been missing here for the past few months and they are the elements that bring all of these loose classroom parts together to complete a beautiful whole school.



Naomi



Can you help?

If anyone has a play kitchen to donate to one of our Nursery School outdoor classrooms, it would be greatly appreciated!

Please contact

naomi.elyachar@csibriarcliff.org.



STORY TIME has arrived at CSI!

Come join, via Zoom, an experienced early childhood teacher for 30 minutes on Thursday afternoons from 3:30-4:00pm for story time.

Age-appropriate books about special themes, important values, and Jewish holidays will be read. Puppets and props will excite your 3-5 year olds into a world of imagination and fun!

Please contact Barbara Schoenfeld for questions and if interested at

bschoenfeld11@gmail.com.

FROM THE NURSERY SCHOOL PARENT ASSOCIATION

A few important notes and reminders:

First PA Meeting

Our first NS PA meeting will be held on **Wednesday, October 7th** after drop-off. All are welcome to attend. Please email us (csinspa@gmail.com) if you wish to attend (either in-person or virtually) or are unable to attend but would like to be involved.

PA Membership Dues

We are asking each family to support the PA by contributing \$50 for 1 child, \$75 for 2 children enrolled at CSI. Your contribution will support upcoming programming, educational supplies and initiatives to help make our school the very best that it is. Please submit payment either via Venmo to @csinspta or by check to CSI Nursery School PA. Please write your child(ren)'s full name in the memo of the payment.

Class Parents

Thank you to those of you that already signed up to be a class parent. We are still looking for class parents for the 3's and 4's classes, so if you are interested in signing up, please reach out to Melinda at NS PA Gmail by **Friday, October 2nd**. She will be happy to provide more information and details. This is a great way to be involved, especially if your time is limited!

Want to Get Involved?

We are looking for parents of all levels of commitment to join our PA. If you are interested in getting involved, please contact us at csinspa@gmail.com.

We are open and eager to hear your suggestions, so please email us (csinspa@gmail.com). In the meantime, here are some ways to get involved:

- NS PA Meetings are held monthly (either in person or virtually) and all are welcome to attend
- Sign up to help plan a single event
- Become a class parent and coordinate communication between the NS PA, teachers, and parents in your child's class
- Attend the school and social events planned for the upcoming year

We wish you and your families a very happy, healthy, and sweet New Year!

Shana Tova,
Emily, Alissa, Angela and Melinda
The CSI NS PA



SOCIAL COMMITTEE - Barbara Schoenfeld, Chairperson**THE SOCIAL COMMITTEE IS PLEASED TO PRESENT THE
FOLLOWING UPCOMING EVENTS:****OCTOBER 18th:**

We can all use some magic in the world now. Magician Jim Munsey will dazzle you on Sunday, October 18, at 3 pm. It is FREE and VIRTUAL and a FAMILY EVENT for AGES 7 and UP. Jim has over 25 years of experience entertaining audiences. Please bring a deck of cards if you wish to participate in some card tricks. Get ready for some audience participation, comedy, surprises, magic, mystery, mentalism and more!

**NOVEMBER 15th:**

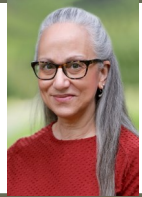
On Sunday, November 15 at 3pm, we will have a VIRTUAL concert featuring the dynamic duo, Lisa and Matthew Stein. As sister and brother, they are energetic, enthusiastic, and multi-talented. Lisa gave a wonderful concert in August for the CSI Sisterhood and we're delighted to have her back, with her brother this time.

As a singer, cellist, and composer, Lisa Stein has created and currently leads multiple singing communities, including a Jewish a cappella group and a nigun circle. She is studying Music and Religion at Wesleyan University, where she performs operatic, classical South Indian, experimental, Renaissance, and Jewish music. Lisa recently released her first album of original music, Sonic Salve.

San Francisco-based fiddler and composer, Matthew (Meyshke) Stein leads klezmer trio Baymele and performs regularly with a number of classical and East European folk ensembles. Formerly a software engineer with YouTube, he now designs puzzle hunts, alternate reality games, and escape rooms with his company, Enigmida.

We hope to see you at both events! Please contact Barbara Schoenfeld at bschoenfeld11@gmail.com

Synagogue Director's Message



Thank you. Those two words have never been so deeply felt or sincerely offered.

From the first moment the CSI staff started working from home through this moment as I write, the members of this congregation from leadership to occasional volunteers have shown themselves, not surprisingly, to be *mentsches* of the highest degree.

Our Rabbi and Cantor led the way with creativity, flexibility, skill, intelligence and energy. Our new Nursery School Director, Naomi Elyachar and our new Assistant Education Director, Libby Spitzer, jumped into the proverbial "deep end" to create wonderful, meaningful educational experiences for the children in Nursery and Religious School.

Try as I may, I don't think I can say enough about the leadership of this congregation.

In the face of unheard of difficulties you stepped up to form essential, protocol-setting committees. Those in the medical and legal fields provided professional advice and insights to enable us to identify critical information from which we made crucial decisions. As community leaders you reached out to those who might need assistance for any reason and took action. Tech gurus provided around the clock assistance to keep us from having to "go dark" for even the shortest period of time.

Elul reflection programs for all sprang up from everywhere. Yoga, cooking, journaling, poetry, music, *shofar* blowing and learning; you made it happen for everyone.

Our officers and trustees, always a hard-working group, doubled down on helping to shepherd the congregation through a minefield of ever-changing, constantly growing list of possible disasters.

Our farm director, David Levitt, and those with whom he works, created a beautiful, lush Organic Farm. CSI crops and beds belonging to families who purchased and tended them, burgeoned and blossomed. So much food was grown, sold and donated thanks to these efforts. Covid did not stop nature, and those who love it here at CSI, from taking its course. It blows me away! (Again, we thank Fred Schulman for this magnificent brain child of his).

Several people have asked me how my High Holidays were this year. Though I dreaded being alone for the days during which I annually immerse myself in the spirit and closeness of this community (I refer to it as my personal *mikvah*) I found an entirely unexpected feeling come over me. I am always proud to be part of this community, but this year in addition to that source of joy, I was inspired by you.

No one could ask for anything more.

Stay well,

Ellen



CSI Community Organic Farm

Regenerative Agriculture Rooted in Jewish Tradition

OCTOBER UPDATE

When I was asked to write an article for the October Bulletin last spring, fall seemed so far away. I said, “Sure,” having no idea what I would write about. When I wrote this article, I had several disparate thoughts about our farm that I decided to share with you.

At this self-reflective time in our Jewish calendar, I think of the verses from Ecclesiastes (3:1-8), highlighted in a song written by Pete Seeger. “To everything there is a season, and a time to every purpose under heaven.” And, “...a time to be born, and a time to die...a time to plant and a time to reap...” Our first spring crop, a perennial, was horseradish, harvested in time for our seders which were often seen virtually by our friends and family members. Shortly following, close to the beginning of our terrible COVID crisis, we planted many types of seedlings, nurturing them and then reaping the rewards of bountiful harvests. Some of our produce was sold and some was contributed to feed the hungry who have become so plentiful right here in Westchester.

Our grape arbors were pruned for the first time of the season, in late winter, spearheaded by Arron Stern and numbers of his children and grandchildren. Under Aaron’s guidance, much more work was done with the grape vines throughout the growing season. We anticipate that these grapes will form the basis of the first bottles of CSI wine! Contact Aaron Stern if you want to help with this project.

As a senior citizen who has had a vegetable garden practically his entire life, I am amazed how much I learn almost every time that I am in the CSI garden. On a recent visit, I was surprised to find out that we were growing okra. I learned that the okra seedlings came from Jonathan Kirschner, who grew up at CSI and whose parents, Janice and Barry, are long-time members. Generally considered a southern crop, this is a vegetable that I have rarely eaten and one that I had no clue as to how it was grown. I was fortunate to be able to purchase several fruits of the plants and, in speaking with John Chambal, our culinary expert, was given suggestions regarding how to cook these long seed pods. A new experience for me—a tasty one.

It seems like there is always something new on the farm. Have you seen our greenhouse? This new addition will enable us to grow some of our own seedlings. That will save us money and will enable us to have additional control of the growing process. It will also provide another opportunity for volunteers to help out on the farm. If you are interested in volunteering, please contact Ryna Lustig. She works very hard on behalf of the farm and CSI!

CSI member, David Levitt, is in charge of the daily operation of the garden. His botanical knowledge and care for the farm are really impressive. We are nearing the end of the current growing season, but there are still some late summer and fall crops that are being harvested. Depending on the weather, there may be some tomatoes, squash, bok choy and fall crops such as lettuce, brussel sprouts, herbs and others.

Prior to winter, when the soil will rest in preparation for a new season, I invite you to take a walk on our wonderful farm. Before you leave, be sure to say, “Hi,” to our lovely chickens in their wonderful coop, and consider purchasing some of their colorful eggs! Show your children and grandchildren that at CSI, vegetables and eggs do not arrive as they do in a supermarket, but in other, more beautiful ways. Also, when planning for next spring, please know that you are welcome to farm one of our personal-sized gardens to grow your own crops and/or flowers with the support of our volunteer committee members, led by Jill Greenstein.

Mike Kirsch



THE CSI PUMPKIN PATCH!



**Pumpkins for
sale at CSI!**



**Aaron Stern, our resident
vintner working with his
family members
on the farm.**

**Wine is being made
right here at CSI...
stay tuned!**

**Of the 3,000 pounds of crops grown, we donated about 15% to the
Ossining Children's Center, The Pleasantville Food Pantry
and other local agencies.**

What an amazing and generous accomplishment!

SISTERHOOD NEWS - www.WLCJ.org

CSI SISTERHOOD 2020-2021
MEMBERSHIP "NO-DINNER" SPEAKER
WEDNESDAY, October 7, 7:30 P.M.

Please join us as we welcome Susan Rudnick, author of *Edna's Gift How My Broken Sister Taught Me To Be Whole*. Susan was born in NYC to refugee parents escaping from Nazi Germany. Growing up as a first generation American, was a defining aspect in her life. But the crucible for her major life choices has been her relationship with her sister Edna. When they were young, Susan and Edna, were inseparable; Edna was Susan's first love and constant companion. But as they grew up and Edna's physical, and mental challenges altered the ways she could develop, a gulf formed between them. Susan's life became even more complicated when, just short of her sixteenth birthday, she learned that she had been born without a uterus and would never menstruate or give birth to children. As she coped with this trauma, Edna continued loving her unconditionally, as she always had. Encompassing Susan and Edna's lifelong, complex, intertwining relationship, *Edna's Gift* has a powerful message: life may be unpredictable, even traumatic—but if you remain open, strength and wisdom will come to you from surprising and unexpected sources.

Edna's Gift is available as an e-book from the Westchester Library System and from Amazon and Barnes and Noble.

R.S.V.P. by email to Robsamg@optonline.net. Zoom link will be provided.
This event is for Sisterhood members only.

**Return this form with a check for \$36.00 (\$54 for non-CSI members) payable to: CSI SISTERHOOD.
Checks should be mailed to Annleah Berger, 10 Charlotte Court, Briarcliff Manor, N.Y. 10510**

NAME_____

E-Mail_____

ADDRESS_____

Phone_____

SISTERHOOD CONTINUED



The Sisterhood Book Club continues this year with new facilitators, Roberta Bar-Levav and Susan Thrope.

The first book we will be reading is “Gateway to The Moon” by Mary Morris.

From award-winning novelist Mary Morris comes the remarkable story of a remote New Mexican town coming to grips with a dark history it never imagined.

In 1492, the Jewish and Muslim populations of Spain were expelled, and Columbus set sail for America. Luis de Torres, a Spanish Jew, accompanies Columbus as his interpreter. His journey is only the beginning of a long migration, across many generations. Over the centuries, de Torres’ descendants travel from Spain and Portugal to Mexico, finally settling in the hills of New Mexico. Five hundred years later, it is in these same hills that Miguel Torres, a young amateur astronomer, finds himself trying to understand the mystery that surrounds him and the town he grew up in.

Entrada de la Luna is a place that holds a profound secret--one that its residents cannot even imagine. It is also a place that ambitious children, such as Miguel, try to leave. Poor health, broken marriages, and poverty are the norm. Luck is unusual. When Miguel sees a flyer for a babysitting job, he jumps at the opportunity, and begins work for a Jewish family new to the area. Rachel Rothstein is not the sort of parent Miguel expected. A frustrated artist, Rachel moved her family from New York in search of a fresh start, but so far New Mexico has not solved any of the problems she brought with her. Miguel loves the work, yet he is surprised to find many of the Rothstein family's customs similar to ones he's grown up with and never understood.

Interwoven throughout the present-day narrative are the powerful stories of the ancestors of Entrada's residents, highlighting the torture, pursuit, and resistance of the Jewish people. A beautiful novel of shared history, *Gateway to the Moon* is a moving and memorable portrait of a family and its journey through the centuries.

This book is available in the Westchester Library System.

Our first meeting is Sunday, November 1 from 4:00-5:30 via Zoom.

President: Robin Ginsberg * Treasurer/ Financial Secretary: Sharon Richter * Recording Secretary: Beth Levine
Corresponding Secretary/ Bulletin : Marion Jablansky * Membership: Annleah Berger * Mah Jongg Chair: Cheryl Katz

MEN'S CLUB - Mark Reisman & Richard Langeloh, Co - Presidents



MEN'S CLUB BOOK CLUB



Our next meeting is
Thursday, October 22nd at 7:30pm

We will be discussing Red Notice
by Bill Browder

For more information please contact
Alan Grotenstein agrotenstein@gmail.com
914 591 8372 Office * 914 953 7866 Cell

To join the Men's Club, you can do it right now online:

<https://www.csibriarcliff.org/mens-club.html> (Community | Men's Club from the CSI Home page). It's easy. You'll need to log into your account, so if you have any questions or issues, please let us know!

USY/KADIMA—Andrea Bromberg, Advisor

- Have questions? E-mail Andrea at csiusy@csibriarcliff.org. Or speak to a USY board member!
- Want METNY updates on your phone? Text @metnyu to 81010 for reminders.
- Want to register for a regional or divisional event? Follow this link:
https://www.regpacks.com/reg/templates/build/?g_id=100901855

PRIDE COMMITTEE - Suzanne Haber, Chairperson



THE CSI PRIDE COMMITTEE is closely aligned with an organization named Keshet which works for the full equality of all LGBTQ Jews and our families in Jewish life. *Keshet* equips Jewish organizations with the skills and knowledge to build LGBTQ-affirming communities, create spaces in which all queer Jewish youth feel seen and valued, and advance LGBTQ rights nationwide.

Next Meeting: 10/13 at 7:30pm

OCTOBER 2020

Sunday	Monday	Tuesday	Wednesday	Thursday	Friday	Saturday
C/L = Candle Lighting Time				1 13 Tishri 8 am Minyan	2 14 Tishri Kabbalat Shabbat/Erev Sukkot Via ZOOM 6pm C/L 6:16pm	3 15 Tishri Sukkot/Shabbat Morning Services on site AND STREAMED at 9:30am BM: Mikayla Neave 6pm Sukkot
4 16 Tishri Sukkot Day 2 Service 9:30am on site AND STREAMED	5 17 Tishri 8am Minyan	6 18 Tishri Second Generation Survivors 7:30pm Education Committee 7:30pm	7 19 Tishri Sisterhood Opening "Dinner" 7:30pm	8 20 Tishri 8am Minyan	9 21 Tishri Kabbalat Shabbat/Shemini Atzeret Via ZOOM 6pm C/L 6:05pm	10 22 Tishri Shemini Atzeret/Shabbat Morning Services/Yizkor on site AND STREAMED at 9:30am Simchat Torah 7pm Yizkor Shemini Atzeret
11 23 Tishri Simchat Torah Service 9:30am	12 24 Tishri 8am Minyan NO NS Columbus Day	13 25 Tishri Ha Mishpacha virtual program 12:30pm Pride Committee 7:30pm	14 26 Tishri	15 27 Tishri 8 am Minyan	16 28 Tishri Kabbalat Shabbat 6pm Via ZOOM C/L 5:54pm	17 29 Tishri Shabbat Morning Services on site AND STREAMED at 9:30am Bereshit
18 30 Tishri 9am Religious School on the Farm 9:15am Minyan Social Committee Virtual MAGIC SHOW 3pm	19 1 Cheshvan 8am Minyan	20 2 Cheshvan Executive Committee 7:30pm	21 3 Cheshvan	22 4 Cheshvan 8 am Minyan	23 5 Cheshvan Kabbalat Shabbat 6pm Via ZOOM C/L 5:44pm	24 6 Cheshvan Shabbat Morning Services on site AND STREAMED at 9:30am BM: Stephanie Ben-Zvi 5:45pm Noach
25 7 Cheshvan 9:15am Minyan	26 8 Cheshvan 8am Minyan	27 9 Cheshvan Board of Trustees 7:30pm	28 10 Cheshvan	29 11 Cheshvan 8am Minyan	30 12 Cheshvan Kabbalat Shabbat 6pm Via ZOOM C/L 5:35	31 13 Cheshvan Shabbat Morning Services on site AND STREAMED at 9:30am Lech Lecha



Judy Boehr, Chairperson



Project Isaiah Food Drive for the Ossining Food Pantry

This year, there are many changes to how things are being done, both here at CSI and in the community. Some things don't change, however. There are people in our community who are hungry and need our assistance. The Ossining Food Pantry, who we always support by donating bags of food that CSI members return during the High Holiday period, is presently not open for families to pick up food. They are, however, operating and supporting more than 500 families each month.

During the Pandemic, the Good Pantry has been providing gift cards for C-town and coupons for the Farmers' Market in Ossining. In addition, they are now distributing food at the Star of Bethlehem Church, Horac, and Market Square. (This distribution was being handled by Ossining employees, but now that they are back at work, the Pantry has assumed this role.) The Food Pantry has also been utilizing Feeding Westchester for additional food. When other organizations (Loaves and Fishes, Ossining PTA) provide meals, the Pantry has been providing a bag of food to those families.

As you can see, the need is great, and the commitment of the Pantry is strong. Typically, our food drive sends them \$3,500 - \$4,000 worth of food. We are hoping to honor that commitment again this year.

Please consider making a donation to the Pantry in place of the bag of food you would have brought to CSI. We suggest a donation of Chai (\$18, \$36) or more, whatever you can provide, to support our neighbors in need. This donation should be sent **DIRECTLY TO THE OSSINING FOOD PANTRY** at PO Box 669 Ossining, NY 10562. (You can write from CSI in the memo line.) If you would rather make a donation on line, visit: www.ossiningfoodpantry.org and follow the link.



A SPECIAL NOTE FROM JUDY BOEHR:

Dear Friends and Family,

There is so much to reflect on this year. We are beginning 5781 under unusual and sometimes difficult circumstances. We've lived with loss and readjustment, especially for the past six months, but there is still much to be hopeful for.

As the new year begins, I am trying to focus on my many gifts and blessings - good health, family I love, friends who support and nourish me, a safe and beautiful place to live, basic needs that I can easily meet, and so much more.

Yes, things are missing... hugging, close contact with community and those I love, singing, dinner groups to usher in the new year, and more. But we've also been creative (who knew about zoom before March??), and kind to each other, appreciative of the technology that allows us to be present with one another and check in with loved ones, and thoughtful about what really matters. That's a good place to begin the new year. Perhaps, as 5781 progresses and we look forward, we will continue to take stock and evaluate what we really need, who and what matters in our lives, and how we can improve our lives by improving our communities and the world around us. The lessons of the past few months will hopefully propel us to a better place.

Wishing for all of you a year of good health, community, love, peace and justice, and positive change that benefits both strangers and those we love. May 5781 be a year of blessing.

Love,

Judy

LIFE CYCLE EVENTS

Mazal Tov to: Faith Kavy & Joseph Kovar on the *Bar Mitzvah* of their son, Aidan.

Mazal Tov to: Jaime & Henrik Sukonnik on the birth of their son, Caleb Mickie. Caleb is the grandson of Francine & Robert Goldstein and Marina & Vladimir Sukonnik.

Mazal Tov to: Gary & Lisa Lehrman on the birth of their granddaughter, Lily Noa. Lily is the daughter of Emily & Logan Tamres.

Condolences to: Vernon Weiner on the loss of his father, Norman Weiner.

Condolences to: Gerrie Rude on the loss of her brother, Marty Trachtenberg. Mr. Trachtenberg was the uncle of Donna Yellen and Adam Rude.

Condolences to: Steven Kavee on the loss of his father, William Kavee.

Condolences to: Jill Singer on the loss of her step-father, Jesse Koch.

DONATIONS

CANTOR'S DISCRETIONARY FUND

In memory of Jennie Valenti

In honor of the birth of Jamie Robert Shiovitz-Mahrt

The Valenti Family

Esther Schwartz

CARING COMMUNITY FUND

In memory of Charlotte Schluger

In memory of Marty Trachtenberg

In memory of Rose & Charles Trachtenberg

In memory of Marty Trachtenberg

In memory of Abraham Millstein

In memory of Minnie Millstein

In honor of the birth of Jamie Robert Shiovitz-Mahrt

In memory of Inge N. de Herzenberg

In memory of Theo Herzenberg

Bette & Gary Slutsky

Bette & Gary Slutsky

Gerrie Rude

Gerrie Rude

Joyce & Burt Koyner

Joyce & Burt Koyner

Sonia & Paul Kleinman

Sonia & Paul Kleinman

Sonia & Paul Kleinman

JEFFREY DITTELMAN/ROBINOV CAMP RAMAH FUND

In memory of Rose & Charles Trachtenberg

In memory of Marty Trachtenberg

Gerrie Rude

Gerrie Rude

ETZ CHAIM - TREE OF LIFE FUND

In honor of the birth of Jamie Robert Shiovitz

In memory of Marilyn Metzger

In memory of Goldie Glick

In memory of Paulette Wolff

In memory of Victor Boucai

In memory of Jesse Koch

Roslynne Reichgott

The Metzger Family

Shelley Glick & Steve Saper

Susan & Peter Diamond & Family

Linda Boucai Lanier

The Zaretsky Family

RACHEL GREENSTEIN CHILDREN'S RESOURCE LIBRARY FUND

In honor of the wedding anniversary of Marion & Ray Sader

In memory of Marian Frank

Jill & Joel Greenstein

Eleanor & Michael Frey

GILBERT KAVY MEMORIAL BUILDING FUND

In memory of Rita Freeman

Ellen & Jack Freeman

ORGANIC FARM FUND

In memory of Teresa D'Ippolito

In honor of Rebecca Zinn leading Friday night services

In memory of Charlotte Schluger

In memory of Teresa D'Ippolito

In honor of the birth of Jamie Robert Shiovitz

Thank you to CSI

Bette & Gary Slutsky

Ryna & Naftali Lustig

Ryna & Naftali Lustig

The Band Family

Jill & Joel Greenstein

Rhonnie & Arnold Zeitlin

DONATIONS, CONTINUED

ORGANIC FARM FUND—CONTINUED

In honor of the wedding of Dara Kagan

In memory of Jean Fleisher Margolies

In memory of William Kavee

In memory of William Kavee

In memory of William Kavee

Marilyn & Bob Margolies

Marilyn & Bob Margolies

Rochelle & Marc Auslander

Gail Sider

Mary Ann Baiyor

PRAYER BOOK FUND (*Lev Shalem*)

In memory of Beatrice & Harry Litwen

Roberta Freilich

RABBI'S DISCRETIONARY FUND

In memory of Charlotte Schluger

In memory of Rose & Charles Trachtenberg

In memory of Marty Trachtenberg

In honor of the birth of Caleb Mickie Sukonnik

In honor of Ellen Johnson

Olga & Philip Prince

Gerrie Rude

Gerrie Rude

Helen Chuckrow & Richard Langeloh

Merri Rosenberg & Kenneth Hupart



DONATIONS TO THE ORGANIC FARM FUND FROM RABBI STEVEN & JUDY KANE

In memory of Norman Weiner, father of Vernon Weiner

In memory of Marty Trachtenberg, brother of Gerrie Rude, uncle of Adam Rude and Donna Yellen

In memory of William Kavee, father of Steven Kavee

In memory of Jesse Koch, step- father of Jill Singer

In honor of the birth of Caleb Mickie Sukonnik, son of Jaime & Henrik Sukonnik, grandson of Francine & Robert Goldstein and Marina & Vladimir Sukonnik.



Celebrants	Date	Years
Adam & Marnie Tihany	1	25
Steven & Lisa Cohn	2	26
Daniel & Jill Singer	5	23
Howard & Susan Code	6	35
Robert & Randee Glazer	7	36
Paul & Susan Hodara	9	37
Leonard & Deborah Chubinsky	10	38
Mark & Barbara Nackman	10	38
Alan & Susan Grotenstein	11	27
Gerald & Millicent Citron	12	58
Samuel & Robin Ginsberg	12	35
Lawrence & Jodie Smoler	14	25
Evan & Bonnie Rogers	16	38
Mark & Marnie Rosenberg	19	24
Asaf Falah & Jeanette Liu-Falah	19	14
Naftali & Ryna Lustig	21	36
Bennett Ashley & Ruth Weinreb	21	30
Marc & Beth Roth	22	26
Rabbi Steven & Judy Kane	23	37
Henrik & Jaime Sukonnik	23	9
Steve & Janice Rappaport	24	16
Andrew & Elaine Bloom	25	50
David & Patricia Stiffman	25	33
Werner & Dalia Renberg	28	58
Andrew & Emma Schifrin	30	15
Robert & Marilyn Margolies	31	44
Elliott & Debbie Barish	31	38



Celebrant	Date	Years
Ava Schwartz	4	13
Chloe Kornberg	6	10
Mikayla Neave	8	13
Ethan Rotter	12	12
Ari Gerstein	14	9
Alexandra Johnsen	22	10
Knox Gary	31	10

Andy & Carole Kagan's September 12th anniversary was left out of the September bulletin. They celebrated 44 year of marriage.

OUR OCTOBER *B'NAI MITVAH*

OCTOBER 3: Mikayla Neave

Hi, my name is Mikayla Neave. On October 3, 2020, I will be called to the *bimah* to recite my Torah portion, *Vezot H'abracha*. Supporting me as I make my way to becoming a *Bat Mitzvah* will be my grandparents, my mom, my dad, my brother, and my dog. My family and I live in Briarcliff Manor, where I attend Briarcliff Middle School along with all my friends. I am currently in the 8th grade. During my free time, I enjoy biking, playing soccer, and spending time with my family, friends, and dog.

I've always had a passion for animals since I was little. With this, I incorporated my love for animals into my *Bat Mitzvah* project and decided to volunteer at the SPCA. The objective of the program is to help animals find proper homes and get the exercise they need. Knowing this, I did a variety of things to make it easier for the workers and animals, including hanging up fliers, walking and reading to the dogs to comfort them, and more.

With the special day right around the corner, I'm more than excited, and a bit anxious, to become a *Bat Mitzvah*. Five years at Hebrew School at CSI has helped me prepare for the fast approaching day. I would also like to give a special thanks to all of my teachers, Cantor Shiovitz, Rabbi Kane, and to all of my amazing friends and family members who have helped me accomplish and work towards this special and exciting occasion. Thank you!

OCTOBER 24: Stephanie Ben-Zvi

Hi, my name is Stephanie Ben-Zvi and on October 24 I will be called to the Torah as a *Bat Mitzvah*, to recite my Torah portion, *Lech L'cha*. I live in Briarcliff Manor with my parents and my younger sister, and I am in 7th grade at Briarcliff Middle School. Middle school has been a very great experience for me. It was a little hard at the beginning of 6th grade, with all the switching classes and much more homework, but I was able to get used to it. Dance was also a factor that made middle school extra challenging for me, since I am a competitive dancer and have had to manage long hours at the studio along with homework and other school projects.

I am in the Intensive Program at Breaking Ground Dance Center, specifically in Junior Company. I have been dancing at Breaking Ground for 8 years, and I have been competing for 6 years. I do various styles of dance, including jazz, lyrical, contemporary, musical theater, ballet and tap. It is very hard for me to choose a favorite, since I find all the styles exciting and different from each other. When I am not at dance, I like to spend my free time baking. Baking has become a big hobby since the beginning of the pandemic, and is continuing to be even as I get back to a slightly more regular life with school and dance. I have baked cakes, cupcakes, brownies, cookies, and many other delicious recipes.

For my *Bat Mitzvah* project, I am going to be raising money for Feeding Westchester. Feeding Westchester is an organization that is committed to providing food for those in Westchester in need. Due to Covid-19, there is an even greater amount of people struggling to get meals each day. I will be fundraising, holding a virtual food drive, and creating breakfast bags for children and seniors. Lastly, I wanted to include my love of baking in my *Bat Mitzvah* project. I am planning to bake cookies for local supermarket workers, as they are important first responders who deserve our gratitude for helping to "feed Westchester."

I have been at CSI since preschool, and it's hard to believe that my *Bat Mitzvah* is almost here. I would like to say thank you to all my preschool and Hebrew school teachers, Rabbi Kane, and especially Cantor Shiovitz, who has been doing months of virtual lessons with me over FaceTime since the pandemic started to make sure I am practiced and ready for my big day. I also want to thank my family and friends who have been supporting me on my way to becoming a *Bat Mitzvah*. I am looking forward to my big day!

PLEASE USE THIS FORM TO MAKE DONATIONS TO CONGREGATION SONS OF ISRAEL

(Mail this form with your check made payable to CSI to: CSI, 1666 Pleasantville Road, Briarcliff Manor, NY 10510)

IN MEMORY OF: _____

IN HONOR OF: _____

SPEEDY RECOVERY TO: _____

MAZAL TOV TO: _____

THE YAHREZIT OF: _____

____ I wish to accept an *Aliyah*.
 (circle one: Cohen Levi Israel)
 ____ I wish to accept another honor.

ON WHAT DATE? _____

We will make every effort possible to honor
 your request, depending on availability on that
Shabbat.

SELECT FUND(S) - Except where marked, minimum donation per fund is \$18.00.Descriptions of each fund can be found on our website: www.csibriarcliff.org - click on "Grow."

KIDDUSHIM FUND – IT IS OUR LONG-STANDING CUSTOM TO SHARE KIDDUSH AFTER OUR SHABBAT MORNING SERVICES. WE VERY MUCH APPRECIATE THE SUPPORT PROVIDED BY YOUR DONATIONS IN ORDER TO BE ABLE TO CONTINUE THIS WONDERFUL TRADITION. The minimum contribution to this fund is \$36. FULL SPONSORSHIP of kiddush begins at \$180. Donations of all amounts are very much appreciated! Your name will be announced on the bimah on the appropriate Shabbat morning. We thank you for your continued support!

KIDDUSH DONATION AMOUNT: _____ **SHABBAT DATE** _____**AMOUNT FUNDS**

_____ Cantor's Discretionary Fund
 _____ Caring Community
 _____ Abraham Cohen/ Fred Starler Memorial
Tzedakah Fund
 _____ Jeffrey Dittelman/ Robinov Camp *Ramah*
 Scholarship Fund (Overnight)
 _____ Educational Director's Discretionary Fund
 _____ *Etz Chaim* – Tree of Life Fund
 _____ Rachel Greenstein Children's Resource
 Library Fund
 _____ Gilbert Kavy Memorial Building Fund
 _____ Ira Kestenbaum Beautification Fund

AMOUNT FUNDS

_____ Memorial Garden Fund
 _____ Rhoda & Mel Miller Religious School
 Tuition Assistance Fund
 _____ *Minyan* Breakfast Fund
 _____ Mitzner Family Special Educational
 Needs Fund (Lev/Shadows)
 _____ Organic Farm Fund
 _____ Prayer Book Fund (\$36 *Lev Shalem*,
 \$60 *Etz Chaim Chumash*)
 _____ Rabbi's Discretionary Fund
 _____ Study In Israel Scholarship Fund
 _____ Zuckerman/Charlotte Hering Memorial
 Fund for *Ramah* Day Camp Scholarships

FROM: _____

PLEASE PROVIDE ADDRESSES FOR NON-CSI MEMBERS FOR PROPER ACKNOWLEDGEMENT:

PLEASE SUPPORT OUR ADVERTISERS



Reserve an appointment to experience a carefully curated selection of affordable home entertainment solutions:

Stereo & Surround Systems from Marantz, Anthem, Denon, & Parasound
 Wireless Audio Systems from **SONOS** and Denon **HEOS**
 Turntables from Denon, Marantz, Pro-Ject, & European Audio Team

PARASOUND



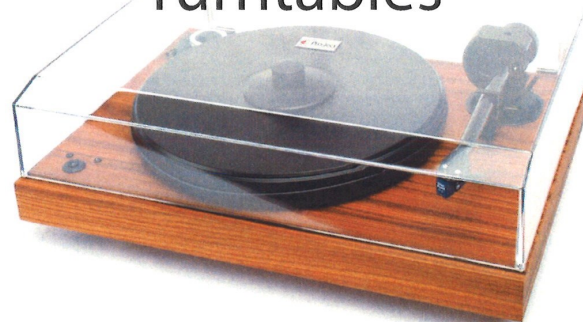
marantz®



Turntables



ARC ANTHEM ROOM CORRECTION



Home Theater for Music Lovers



SONOS

Networking and WiFi expertise
 Custom Installation

Contact CSI member Richard Zuckerman for an in-house or showroom appointment
 Richard@EnvelopingSound.com 914-502-0800

LOOKING FOR A HOME IMPROVEMENT & HANDYMAN SERVICE?

LOOK NO FURTHER ... I&D Does it ALL!
Give us a Call for a **FREE** Consultation



OFFERING A WIDE RANGE OF RESIDENTIAL & COMMERCIAL REPAIR & RENOVATION SERVICES

- Painting - Exterior/Interior
- Major & Minor Renovations
- Hardwood Flooring & Carpets
- Alarm & Camera Installation
- Plumbing & Electric
- Gutter Cleaning & Repair
- Spring Clean-Up for House & Yard
- Power Washing
- Junk Removal



We'll IDentify the Problem & the Solution
LOCAL. EXPERIENCED. HONEST. AFFORDABLE.



CALL US TODAY
914.497.6273

Experience the I&D Difference

Serving Westchester & Surrounding Areas

Satisfaction Guaranteed
Fully Licensed & Insured



Find us on
Facebook

Change your view with custom window coverings!



30% OFF!*
Your next order!

**BUDGET
BLINDS**

Style and service for every budget.™

FREE In-Home Consultation!

Budget Blinds of Ossining

914.747.2619 | budgetblinds.com

**Shutters | Draperies | Wood Blinds | Honeycomb Shades
Roller Shades | Vertical Blinds | Silhouette | Woven Woods And More!**

*Offer not valid with any other offers. Offer good at time of initial estimate only. Offer good at participating franchises only.
Each franchise independently owned and operated. Budget Blinds is a registered trademark of Budget Blinds, Inc. and a Home Franchise Concepts brand.

Your Total Home Comfort Company



Heating Oil

24 Hour a Day Service, 7 Days a Week

Air Conditioning

Service and Installation

Natural Gas & Electricity

Supply, Service & Installation

Air Duct and Carpet Cleaning

Clear Your Air Ducts and Carpets of Dust and Irritants



Air Conditioning • Air Duct and Carpet Cleaning • Biofuel
Electricity • Energy Audits • Heating Oil • Natural Gas
Mold Testing • Service and Installation

(914) 345-5700

WWW.ROBISONOIL.COM





*Reliable
Responsive
Respectful*

Rosenthal Memorial Chapel is independently-owned and operated. With care and compassion, we offer a full range of Jewish funeral services.

ROSENTHAL
MEMORIAL CHAPEL

491 Mamaroneck Avenue
White Plains, NY 10605

www.rosenthalmemorial.com

Michael L. Rosenthal

914.773.0030



CAMP NABBY
80TH ANNIVERSARY



Ready. Set. Camp!



CAMPNABBY.COM | 1 NABBY HILL MOHEGAN LAKE NY 10547 | 914-528-7796

HOULIHAN  LAWRENCE



BONNIE FIELD BESNER
Real Estate Salesperson
 M 917.446.0211
 BBesner@HoulihanLawrence.com
 bonniebesner.houlihanlawrence.com

BRIARCLIFF MANOR BROKERAGE 914.762.7200

 <p>John R. Gualtiere Owner</p> <p>Hudson Landscapes Proudly Serving CSI and its community for over 20 years</p> <ul style="list-style-type: none"> ♦ Lawn Maintenance Programs ♦ Tree Care Services ♦ Complete Landscape Design and Installations ♦ Irrigation Systems Installed and Maintained ♦ Masonry Services – Patios, Walkways, Walls, Outdoor Kitchens ♦ Excavation and Site Services ♦ Drainage Specialists ♦ Custom Fertilization Programs for Lawns and Trees ♦ Snow Removal <p>(914) 923-9107 www.hudsonlandscapes.com 86 Millwood Road Millwood, N.Y. 10546</p>	<p>WARREN ALTWERGER, D.P.M. Podiatrist-Foot Specialist</p> <p><i>Treating the Foot & Ankle for Over 35 Years</i> <i>"HEALTHY FEET" - A Key to Keeping Fit!</i> Medical, Orthopedic & Surgical Treatment Available</p> <p>43 S. Highland Avenue 450 Gidney Avenue Ossining, NY 10562 Newburgh, NY 12550 914-941-0206 845-565-3331</p>	<p>David E. Weiss, D.D.S. Jewel A. Weiss, D.D.S.</p> <p>General & Cosmetic Dentistry for Adults and Children</p> <p>Come see our new state-of-the-art office!</p> <p>61 Sunset Drive Briarcliff Manor, NY</p> <p>Hi-tech Dentistry with a Caring Touch!</p> <p>(914) 941-1890</p>
<p><i>Printer of this Newsletter</i></p>  <p>Roger Denhoff • Peter Kinkel</p> <p>3742 Boston Road, Bronx, NY 10469 718-654-1200 FAX: 718-653-4272 roger@beehivepress.com beehivepress.com</p>	<p>IRWIN J. KAVY <i>Attorney at Law</i></p> <ul style="list-style-type: none"> • Real Estate • Business Law • Trusts & Estates • Wills <p>573 North State Road Phone: 914-762-6625 Briarcliff Manor, NY Fax: 914-762-6877</p>	

<p>DAVID N. LEVINE Vice President Email: David@CGoodmanGroup.com</p> <p>1210 Pleasantville Road Briarcliff Manor, NY 10510-8000</p>	<p>CHARLES GOODMAN & COMPANY LTD. THE GOODMAN GROUP</p>	<p>JEFF D. KABAT Director Email: Jeff@CGoodmanGroup.com</p> <p>(914) 762-5800</p>
---	---	--