

DECEMBER 2023  
Kislev-Tevet 5784



Beth Sholom  
CONGREGATION

*From Generation To Generation... Together We Grow*

1011 N. Market Street  
Frederick, MD 21701  
301-663-3437

[bethsholom@bethsholomfrederick.org](mailto:bethsholom@bethsholomfrederick.org)  
[www.bethsholomfrederick.org](http://www.bethsholomfrederick.org)

# SHABBAT CHANUKAH DINNER



## 12.8.23

**FOLLOWING SERVICES AT 6:00PM**

**\$18/ADULT    \$10/CHILD (2-15 YRS OLD)    UNDER 2 IS FREE**  
**\$56 MAX FOR FAMILIES**  
**VEGETARIAN OPTIONS AVAILABLE**



In the traditional hymn recited immediately after lighting the Chanukah candles, *HaNeirot Hallalu*, we find the words: “These candles are sacred and we are not permitted to put them to any use; we may only look upon them.” The liturgical piece declares that we may not use Hanukkah candles for any practical purpose—reading by their light or use them to light the Shabbat candles. In fact, we may not use one Hanukkah candle to light another one. That is why we use the Shamash, or servant candle.

Rabbi Sidney Greenberg z”l raised this question in his book *Lessons for Living*. He asks, “How terribly impractical all this sounds. What is it good for? The Chanukah lights are just for looking. It figures. After all, how practical were the people to whom we owe the festival of Chanukah? They were the most impractical people. There were others who were much more practical, who said, “Why resist the Syrians, the bearers of the proud Greek culture? They are the wave of the future. Why should we be different?”

These practical people were called Hellenists. They gradually replaced Jewish traditions with pagan observances. Happily, there were some very impractical Jews in the year 168 B.C.E. Matityahu spoke for them when he declared, “I, my sons and my brothers will continue to walk in the Covenant of our fathers.” This may be the real miracle of Chanukah—that there were enough impractical people who believed that security purchased at the cost of conscience is too

dearly purchased; impractical people, ill-trained and ill-equipped, who dared to take on a foe far more mighty and more numerous. And if we are here more than 2,100 years later celebrating Chanukah, it is because in all the intervening years there were enough impractical Jewish mothers and fathers, humble, nameless heroes and heroines, who often at great peril and in the most forbidden circumstances, kindled the Chanukah lights.”

While we may be forbidden to make utilitarian use of the Hanukkah lights, we would lose an opportunity if we didn’t use *Hanukkah* itself to illuminate the world around us spiritually.

At our best, we interpolate Jewish tradition to a modern age. We teach that our faith has many lessons for all to learn. But there are times when we must appreciate the uniqueness of the Jewish message rather than stress that which we all have in common.

Our shared humanity with all of God’s creatures is a given. What we need to do, if we’re going to survive and thrive as JEWS, is to be impractical just like Matityahu, and refuse to be consumed by a dominant culture which judges our “success” in life by the goods we acquire, rather than the measure of goodness that we have achieved. We surely have much to learn from the culture around us, but time has taught us that we have at least as much to teach the rest of the world as the world has to teach us.

In so doing, we will not only be able to light our Hanukkiyot in the true spirit of Hanukkah; we will be able to use our very being to serve our lofty mission of being an *Or Lagoyim*, a light unto the nations.

## HAPPY HANUKKAH

The March for Israel is over  
Nearly 300,000 converged at the Mall in D.C.  
From states near and far they came  
In cars, busses, planes and trains  
To stand in solidarity for Israel.

And the sight was good to see...

Songs were sung  
Passionate speeches given to support Israel,  
To combat antisemitism in all its ugly forms,  
To set the hostages free.

And the words were good to hear...

As Hanukkah nears may Hashem bless these efforts  
to destroy evil.  
Oh Rock of Ages,  
Arm us, Strengthen us, dry our tears,  
Please send the miracle needed to end our fears.

Ann Ungar  
November, 2023

# Message from the President

SHARON EDELSTEIN | [SMABEG@GMAIL.COM](mailto:SMABEG@GMAIL.COM)



Dear Beth Sholom family,

As I sit down to write this article the days are growing short, dark and cold. Yet, I can't help but be filled with gratitude for the warmth and resilience of our wonderful community. It's been a year—a challenging one, to say the least—but through it all, our Beth Sholom spirit has shone brighter than ever.

We're a family, and families share both joys and sorrows. Lately, it's hard to ignore the tough times our communities are facing around the world. The news can be heavy, and it hits close to home. Yet, in the midst of it all, our bonds as a community become even more vital. It's times like these that we lean on each other, offering support, understanding, and a listening ear.

Amidst the challenges, I focus on the joy and strength we find within our walls. Beth Sholom is a haven, a place where we come together to pray, to celebrate, to mourn, to share, and to find solace. Your presence, your smiles, and your stories are the threads that weave the vibrant tapestry of Beth Sholom. This month we get to celebrate the light of Chanukah together with a wonderful party and tasty latkes!

Now, here's a final nudge as we approach the end of the year. If Beth Sholom holds a special place in your heart (and I know it does), please keep us in mind during your end-of-year contributions. Every bit goes a long way in supporting the heart and soul of our community. Let's ensure we can continue to be that beacon of hope and warmth for each other and for those who need it most. Click <https://www.bethsholomfrederick.org/form/givingtuesday2023> to make your donation.

Thank you for being a part of our incredible family. Your presence makes Beth Sholom the extraordinary community it is.

Wishing you warmth and joy,  
Sharon Edelstein  
President, Beth Sholom

## THANK YOU

To our Torah and Haftarah  
volunteer readers:

David Greenspoon  
Mark Vallon  
Sarah Haring  
Jeff Rossio

## MINYAN AT BSC

Please join us in the  
Beth Sholom sanctuary  
on Thursdays at  
8:00 AM for minyan.



## Support The Gift Shop

The Gift Shop is now open on Sundays during Religious

School hours, or by calling

the synagogue office at

301-663-3437 to set up

an appointment during office hours

Monday through Friday.

You can also shop online at: <https://bethsholomgiftshop.com/>



**Ramar**  
Moving Systems, Inc.  
Agent for United Van Lines

Quality moving solutions

- Local
- Domestic
- International

Household goods • Electronics • Tradeshows • Special Products • Logistics • Storage • Commercial • Rigging

28 Thomas Johnson Drive | Frederick, Maryland 21702 | (301) 694-3366 [www.ramarmoving.com](http://www.ramarmoving.com)



**David Hasson, D.M.D., P.A.**  
**Allison Green, D.D.S.**  
**Michael Virts, D.D.S.**  
*Specialists in Pediatric Dentistry*

**Dr. Stuart Sheer**  
*Specialist in Orthodontics for Children and Adults*

**Mt. Airy Children's  
Dental Associates**  
Your dental home since 1987

602 Center Street • Suite 203 • Mt. Airy, MD  
301.829.6588 • [www.mtairysmiles.com](http://www.mtairysmiles.com)



# From the Executive Director

DAVID BASS | [DBASS@BETHSHOLOMFREDERICK.ORG](mailto:DBASS@BETHSHOLOMFREDERICK.ORG)



I am writing this article shortly after Thanksgiving, and it feels like a good opportunity to think about the ways in which I am thankful for this Beth Sholom community.

I was first drawn to Beth Sholom as a congregant because of the meaningful and uplifting Shabbat services led by Rabbi Hersh and Cantor Shulie, as well as our Synagogue's proximity to my home downtown. I am thankful

that in my role as Executive Director, I continue to experience Shabbat services here with melodies that uplift my soul and Divrei Torah that help me grow intellectually.

I am thankful for our community's donating over \$11,000 to Israel in its time of greatest need. This will make an impact in the lives of our Jewish brothers and sisters in Israel; our community stepped forward with great generosity.

I was thankful to be part of a discussion group about Israel earlier this month that held space for a variety of perspectives. It is not always easy to disagree, but I witnessed our congregants do so with love for each other and for our Jewish homeland.

I am thankful for a hardworking staff at Beth Sholom who are dedicated to our congregants and to ensuring a vibrant Jewish community in Frederick. Your work is greatly appreciated.

I am thankful for our new members who have jumped into Beth Sholom with dedication and joy. Our Shabbat services, social events, Religious School and board committees all have folks who have become part of the Beth Sholom community in the last few years, or in some cases, just in the last few months. We are a growing community, and for this I am especially grateful!

I look forward to seeing you at Shul!

My best,  
David

(301) 898-7337

MHIC 73169



**DORCUS**  
CONSTRUCTION COMPANY, INC.

STEVE DORCUS • OWNER

11228 Putman Road • Thurmont, Maryland 21788

## Condolences to

**Marne Tragert** on the passing of her mother, Marilyn Blake

**Alison Lynch** on the passing of her mother, Shirley Strazza

## BINGO VOLUNTEERS NEEDED

Volunteering at Bingo is both a great way to help the finances of the congregation and to get to know both the broader Frederick community and Beth Sholom congregants. It's great way to meet new people, and have fun while also helping our community. Please get in touch with Marcia Newfeld ([Mknewfeld1251@gmail.com](mailto:Mknewfeld1251@gmail.com)) or Sharon Edelstein ([smabeg@gmail.com](mailto:smabeg@gmail.com)) about volunteering.

## WE WANT TO KNOW....

Are you under the weather? Do you know someone who is? Please let us know. We want to reach out! If a member of our community is sick or in need of a call or visit, please call David in the office at 301-663-3437 or email us at [bethsholom@bethsholomfrederick.org](mailto:bethsholom@bethsholomfrederick.org). We need their names in order to say a Mi Sheberach (prayer for all those in need of healing) from the bima on Shabbat. If you know their and their mothers' Hebrew names, please give us this information also. Please help to keep us informed because we care about you.



Regional  
Design  
Firm



Community  
Focus



passiv

21 Byte Ct Ste I Frederick, MD  
301 698 0020 [www.za-d.com](http://www.za-d.com)



# Religious School News

DR. JENNIFER NEWFELD | [RSPrincipal@BethSholomFrederick.org](mailto:RSPrincipal@BethSholomFrederick.org)



Last summer I had the honor of joining the Pardes Senior Educators Learning Fellowship. This year long fellowship began with a month of study in Jerusalem and continues throughout the school year with monthly webinars. Additionally, each fellow is asked to create a project for their community. I am excited to share that our religious school community will begin our

project this month.

The aim of this project is to cultivate a deeper sense of belonging within the Jewish community among our students by enriching their knowledge of the Jewish American lexicon. This initiative will introduce Jewish Life Vocabulary (JLV) into our school curriculum, sourced from The Jewish Education Center of Cleveland's Onward Hebrew program. JLV comprises Hebrew words and phrases that foster stronger connections to the Jewish people, traditions, culture, and daily life.

## **\*\*Implementation Strategy: \*\***

1. **Weekly Engagement:** Each week, a designated "letter of the week" and a corresponding "word of the week" from JLV will be introduced. These words are commonly used within American Jewish settings, such as "Mazel Tov – congratulations," "Mishpacha – family," and "Kol Hakavod – Great job," seamlessly woven into English conversations. Understanding and embracing these terms promotes a sense of ease and belonging within Jewish spaces.
2. **Incorporation in School:** The word of the week will be prominently displayed in our school, and teachers will actively educate students about its meaning and cultural significance in the classroom. The goal is to transition our religious school community from using the English equivalent to embracing the Hebrew word within our communal interactions.
3. **Family Education Component:** To further strengthen the sense of belonging in Jewish communal spaces, dedicated family education days will be organized. These sessions will revolve around specific Jewish life concepts, spotlighting words like "mishpacha-family" and "shem-name." The focus of this particular family day will extend to exploring the significance of each student's Hebrew name and the familial connections and meanings inherent in choosing that name. Different Family Education learning will be offered for different grades.

I can't wait to hear all the Jewish Life vocabulary throughout the halls of the school. In December we will be focusing on these words:

Date	Letter	Hebrew Word	English Meaning
12/3	Chet	Chanukkah	
12/10	Nun	Ner	Candle
12/17	Bet	Boker Tov	Good Morning

I hope you will use them in your home as well.  
Happy Chanukkah,  
Jennifer

## DECEMBER RELIGIOUS SCHOOL CALENDAR

- Dec. 8 Religious School Shabbat Services and Chanukah Dinner
- Dec. 10 Religious School dismissed at 11am for the Chanukah party (no class for pre-K-2<sup>nd</sup> grade)
- Dec. 24-Jan. 6. No RS or Power hour for winter break

*\*All Sundays and Wednesdays we have classes unless otherwise indicated.*

## Welcome New Member

Marc Weinberg

**MARCUS**  
CONSULTING 

**ERIC L. MARCUS**

President,  
Quality Management Consultant

📞 301.639.0693

✉ [matt1dan@yahoo.com](mailto:matt1dan@yahoo.com)

🌐 [marcusconsulting.net](http://marcusconsulting.net)

5692 Farmhouse Drive  
Frederick, MD 21703

- ✓ TS16949, AS9100, ISO13485, ISO9001, ISOIEC, 17025 Consulting Services
- ✓ ASQC Certified Quality Auditor
- ✓ Management Consulting

# Thank You from Marcia Newfeld

At the beginning of my working life, I held several jobs. Some more interesting and exciting than others, but each was just a job. Then over 30 years ago I became Beth Sholom's first executive director, and I found my career, my passion, and my calling. I had never run a synagogue before, but the Beth Sholom community and I set out on this adventure together. We learned from each other and grew together. I love Beth Sholom and worked hard to make it a place where all the Jews of Frederick could come and feel welcome. Luckily I didn't have to do this alone. Rabbi Kosman, who was our rabbi for over 50 years, was a people magnet. Although orthodox himself, he accepted everyone from all walks of Judaism and beyond. He felt that at Beth Sholom we had to do a little of everything for everyone. He set the tone for the shul and I learned so much from him.

I loved working at Beth Sholom, meeting people, working with them and helping them. It was a labor of love for me. I worked long hours, but didn't mind because it was my passion. And I hope I made things a little better along the way.

November 11<sup>th</sup>, an evening I won't forget! Having the Social Hall dedicated in my honor is overwhelming. As Rabbi Kosman would have said, "It was a-maz-ing!"

Thank you to the committee who worked so hard to put the evening together: Ricky Hirschhorn, Janet Potash, Ellie Kinland, Sharon Edelstein, Roz Nasher, Dana Simel, Ash Ross and David Bass. They kept everything, all the details of the evening, a secret from me. Leading up to the event people kept asking me questions, what would it be like, what will we be doing? I did not know what to say. That was quite a feat keeping me in the dark. But you pulled it off beautifully and I was very honored.

Thank you to my family who have always been my biggest supporters. Thank you for your patience, love and understanding of the long hours I worked and the reason why I cared so much.

Thank you to Janet Potash for putting up with me for all the years we worked together at Beth Sholom. Thank you for being my friend, my editor and at times a voice of reason. Janet not only was my partner in the office but we worked and continue to work bingo together side by side.

And thank you to all of you who donated to this evening and to those of you who were able to attend the gala. I could not have accomplished anything without your help, my Beth Sholom community.

Thank you – you are my Beth Sholom family and I love you all!  
Marcia

## LIFE CYCLE INFORMATION - WHEN A DEATH OCCURS

When a death occurs during the working hours, please call the synagogue office at 301-663-3437 and ask for David Bass so that we may offer assistance. After hours, please call David's cell phone 607-727-4298.

### Chesed/Religious Affairs Committee:

The Chesed Committee assists families who have experienced a death by providing food following the funeral. The Religious Affairs Committee will help set up and lead shivah minyanim. We welcome your interest and encourage your participation and assistance. We need you. Please join us in helping fellow congregants.

If you have any questions, please contact David Bass at 301-663-3437.

**BERKSHIRE  
HATHAWAY**  
HOMESERVICES

PENFED  
REALTY



Isis Tepper

REALTOR®, PSA, SRS, AHWD, C2EX

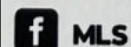
Cell: 301-906-6714

Office: 240-815-9040

[isis.tepper@penfedrealty.com](mailto:isis.tepper@penfedrealty.com)

<https://isistepper.penfedrealty.com>

License# 674790 MD



A member of the franchise system of BHH Affiliates, LLC

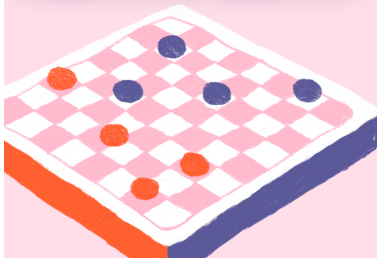
# Join Us for Some Fun!!

## BETH SHOLOM GAME NIGHT



JOIN YOUR BETH SHOLOM  
COMMUNITY FOR A FUN NIGHT  
OF GAMES, DRINKS AND FOOD

AT FREDERICK  
SOCIAL EVERY 4TH  
THURSDAY OF THE  
MONTH AT 6:30 PM



FOR UPDATES ON EVENT CHANGES  
OR NEED TO CHECK IF GAME  
NIGHT IS STILL ON CALL US IN THE  
OFFICE AT (301)663-3437

TEAM BETH SHOLOM:  
MONDAY  
TRIVIA  
NIGHTS.

EVERY 2ND  
MONDAY  
OF  
THE MONTH

FREDERICK  
SOCIAL

AT 6:30PM

JOIN THE BETH SHOLOM TEAM TO WIN  
TRIVIA AGAINST OTHER FREDERICK  
SOCIAL TEAMS!



David Bass  
Sharon Botkin  
Heather Cohen  
Craig Cornblatt  
Cindy  
Diamondstone  
Sharon Edelstein  
Mike Eissenstat  
Cindy Feinberg  
Jay Feinberg  
Derek Frankel  
Gerry Goldgraben  
Candance Herzog  
Joe Herzog  
Sheldon Gnatt

Andrea Kane  
Paul Kane  
Heather Kasper  
Charlie Lazarus  
Jenny Lazarus  
Sara Levine  
Pam Lloyd  
Betsy Maymon  
Dan Pearlman  
Janet Potash  
Marty Potash  
Andrew Reiner  
Gerry Royston  
Howie Scher

Robin Schnapper  
Roland Sebbane  
Leesa Shem- Tov  
Cindy Shubin  
Mike Smith  
Eileen Stahl  
Fred Stahl  
Bob Stone  
Holly Stone  
Rachel Tuer  
Melissa Vivari  
Alan Winter  
Sandy Winter  
Eton Yellin

TOT SHABBAT  
SATURDAY, DECEMBER 16TH  
AT 11:30 AM  
FOR CHILDREN 2-7 YEARS OLD  
WITH CANTOR SHULIE

AN OPPORTUNITY FOR PARENTS AND THEIR  
YOUNG CHILDREN  
TO EXPERIENCE  
THE WARMTH AND JOY OF SHABBAT TOGETHER





## NOV. 25 - DEC. 1

*12/24–12/25 Days the names are read from the Bima*

Gussie Becker  
Sylvan Harris Better  
Herman Blank  
Denise Blank  
Clara Blatt  
Selma Blum  
Eva Chernoff Buchenbaum  
Shirley Cornblatt  
Shirley Edelstein  
Mark Greif  
Richard Kalen  
Marcus Kaplan  
Saul Kochonin  
Martin Miller  
Lena B. Pindek  
Jacob Pittleman  
Samuel Potash  
Louis J. Prenskey  
George Rosen  
Martin Rude  
Max Shapiro  
Morris Stahl  
Sara Trabish  
Anthony Trojecki  
Max Wolberg

## DEC. 2 - DEC. 8

*12/1–12/2 Days the names are read from the Bima*

Zina Berner  
David Blatt  
Joseph Elfman  
Neil Fromer  
Doris Goldstein  
Nancy Ellen Gorelick  
Louis Kosman  
Deane Levine  
Ellen Jean Levine  
Ellen Jean Levine  
Saul Miller  
Peshe Leah Miller  
Rachel Pia Miller  
Channah Miller  
Bess Pincus  
Helen Raab  
Zelma Rein  
Elizabeth Reitman  
Israel Ruck  
Israel Sadownik  
Toby Scensny  
Jean Schlossenberg  
Diane Solomon-Conrad  
Nettie Weil  
Bernard Zavos

## DEC. 9 - DEC. 15

*12/8–12/9 Days the names are read from the Bima*

Charles Becker  
Stanley Brandorff  
Isadore Brandt  
Clarence “Larry” Brull  
Theodore O. Cron  
Geta Elkon  
Charles Glick  
Esther Glushakow  
Angelo Kramer  
Alexander Lazerowitz  
Sandra Lichter  
Bernard Mlavsky  
Charles Mogilewsky  
Andrew David Nisenfeld  
Eric Pickert  
Ruth Schnapper  
Hope Shykind  
Lenore Stern  
Bessie Surick  
Harry Warendorf, Jr.  
Bill Zentz  
Leonard Zimmerman  
Louise Zweig

## DEC. 16 - DEC. 23

*12/15–12/16 Days the names are read from the Bima*

Rose Bernstein Jacobs  
Larry Brull  
Rose Cooper  
Barry Cornblatt  
Lela B. Costin  
Rosalie Cron  
Jacob Horowitz  
Samuel Ismach  
Karl Jacobson  
Samuel Kalb  
Ron Kessler  
Thomas Kincaid  
JoAnn Martindale  
Esther Pearlman  
Richard Reba  
Miriam Rieger  
Hyman Jay Rosenblum  
Ina Rubin  
Edward Stern  
Henry Weil  
Bertha Winter

## DEC. 24 - DEC. 29

*12/22–12/23 Days the names are read from the Bima*

Molly Bailin  
Rae Sager Berman  
Raymond Bernstein  
Phil Blank  
Alvin Blumenstein  
Lillian Corso  
Lillian Corso  
Sarah Davis  
Lawrence Entis  
Leo Friedman  
Egon Gartenberg  
Abraham Glushakow  
Paul Goldfinger  
Bea Greenfield  
Martin Greenspan  
Barry Kalb  
Nathan Lerner  
Morris Mandelowitz  
Alec Meyer  
Sam Needle  
Marty Neier  
Sarah Pittleman  
Ruth Raderman  
William Simbaliski  
Esther Spielman  
Harold Sternberg  
Elias Travis  
Irving Weisberg  
Roger Wolf

## DEC. 30 - JAN. 5

*12/29–12/30 Days the names are read from the Bima*

Steven Carver  
Hanna Cohen  
Joel Davis  
Adele Filderman  
Irwin Fishman  
Sadie Fleisher  
Leib Aryeh Frisher  
Harriet Goldstein  
Rhoda Herzog  
Anna Isaac  
Marion Kandel  
Bessie Lawres  
Bernice Markowitz  
Sylvia Lillian Popkin  
Rena Saidman  
Beverly Shaw  
Bernard Shaw  
Joel Silbert  
Ashleigh Simon  
Samuel Snyder  
Julius Solomon  
Miriam Belle Terlitzky  
Celeste Warendorf

# Mark Your Calendar!

## Beth Sholom Congregation

December 2023

Printed Nov 29, 2023 01:58pm

Sunday	Monday	Tuesday	Wednesday	Thursday	Friday	Saturday
					<b>1 (18 Kislev)</b> Candle Lighting 4:30pm  Kabbalat Shabbat: 6:00pm	<b>2 (19 Kislev) Vayishlach</b> Shabbat Morning 9:30am  Musical Havdalah w/ Malavah Malkah: 5:30pm  Havdalah: 5:36pm
<b>3 (20 Kislev)</b> Religious School 9:30am  Bingo 5:00pm	<b>4 (21 Kislev)</b>	<b>5 (22 Kislev)</b>	<b>6 (23 Kislev)</b> Hebrew Power Hour 4:30pm	<b>7 (24 Kislev)</b> <b>Erev Chanukah</b> Talmud Class: 10:30 am	<b>8 (25 Kislev)</b> <b>Chanukah</b> Candle Lighting: 4:30pm Kabbalat Shabbat: 6:00pm RS Shabbat Service & dinner: 6:00pm	<b>9 (26 Kislev) Vayeshev</b> <b>Chanukah</b> <b>Shabbat Mevarchim</b> Shabbat Morning: 9:30am  Lunch and Learn: 12:00pm  Havdalah: 5:36 pm
<b>10 (27 Kislev)</b> <b>Chanukah</b> Religious School: 9:30am Latkefest: 9:30am RS Chanukah Party/ Herschel & the Hanukah Goblin Play 11:00am Bingo: 5:00pm	<b>11 (28 Kislev)</b> <b>Chanukah</b> Mah Jong: 12:00pm  Trivia Night at Frederick Social: 6:30pm	<b>12 (29 Kislev)</b> <b>Chanukah</b>  Games of Thrones Class: 7:00 pm	<b>13 (1 Tevet)</b> <b>Chanukah</b> <b>Rosh Chodesh Tevet</b> Hebrew Power Hour 4:30pm  Light Up the Night: 6:30pm	<b>14 (2 Tevet)</b> <b>Chanukah</b> Talmud Class: 10:30 am  Rosh Chodesh in the Chapel: 7:00pm	<b>15 (3 Tevet)</b> <b>Chanukah</b> Candle Lighting: 4:31pm  Kabbalat Shabbat: 6:00pm	<b>16 (4 Tevet) Miketz</b> Shabbat Morning: 9:30am  Tot Shabbat: 11:30am  Havdalah: 5:37 pm
<b>17 (5 Tevet)</b> Religious School 9:30am  Bingo: 5:00 pm	<b>18 (6 Tevet)</b> Mah Jong: 12:00pm	<b>19 (7 Tevet)</b>  Games of Thrones Class: 7:00 pm	<b>20 (8 Tevet)</b> Hebrew Power Hour 4:30pm	<b>21 (9 Tevet)</b> Talmud Class: 10:30 am  Board Meeting 7:00pm	<b>22 (10 Tevet)</b> <b>Fast of Tevet</b> Candle Lighting 4:34pm Kabbalat Shabbat: 6:00pm	<b>23 (11 Tevet) Vayigash</b> Shabbat Morning: 9:30am  Havdalah: 5:40pm
<b>24 (12 Tevet)</b> <b>NO Religious School</b> Current Events Meeting at 10:00 am Bingo: 5:00 pm	<b>25 (13 Tevet)</b> <b>Office Closed</b> Mah Jong: 12:00pm Chinese food & Movie night: 5:30pm	<b>26 (14 Tevet)</b>	<b>27 (15 Tevet)</b>	<b>28 (16 Tevet)</b>  Game Night at Frederick Social: 6:30pm	<b>29 (17 Tevet)</b> Candle Lighting: 4:38pm  Kabbalat Shabbat: 6:00pm	<b>30 (18 Tevet) Vayechei</b> Shabbat Morning: 9:30am  Havdalah: 5:45pm
<b>31 (19 Tevet)</b> <b>NO Religious School</b> Bingo: 5:00 pm			<b>NO HEBREW POWER HOUR</b>			



# Ways to Support Beth Sholom

## WHAT ARE THE OPPORTUNITIES TO SUPPORT THE BETH SHOLOM COMMUNITY AND ITS MISSION?

### MEMORIAL & HONORARY GIFTS

Throughout the year, memorial or honorary gifts may be made in memory or in honor of a person for a birthday, anniversary, holiday, or for a personal achievement. Gifts may be made to the General Fund, to a named fund or to the Beth Sholom Legacy Endowment Fund, and will be acknowledged each month in our Bulletin.

### MONTHLY SUPPLEMENTAL DONATIONS

You can set up a monthly supplemental donation which will help Beth Sholom meet our day-to-day operating expenses, which we call our "SOS Fund". These may be made in honor of a person as described above. Such gifts will be acknowledged each month in our Bulletin.

### LIFE INSURANCE POLICIES

Life insurance policies are often an advantageous way to fund an endowment gift because a large donation can be created through relatively small tax-deductible premium payments.

### CHARITABLE TRUSTS

One flexible method for leaving a contribution to Beth Sholom is through a Charitable Remainder Trust, which also provides tax-free benefits to the donor.

### CHARITABLE GIFT ANNUITIES

Similar to charitable remainder trusts, gift annuities provide another way to contribute to the future of Beth Sholom, take advantage of tax-free benefits, and ensure a continual stream of investment income for the congregation.

If you have any questions regarding donations, please do not hesitate to contact our David Bass and/or your financial advisor.

*Sol Levinson*  
Since 1892

A TRADITION OF EXCELLENCE ~ A LIFETIME OF SERVICE



A TRADITION IN THE JEWISH COMMUNITY  
FOR OVER 125 YEARS

Providing exceptional funeral care from  
generation to generation through compassion,  
education, and personalization.

Pikesville  
410-653-8900

Annapolis  
410-881-0801

Columbia  
410-730-7230

[www.sollevinson.com](http://www.sollevinson.com)

## BETH SHOLOM CONGREGATION JOINS THE GARDEN OF REMEMBRANCE

Beth Sholom has become the 29th Partner Congregation at the Garden of Remembrance Memorial Park in Clarksburg, Maryland.

For over 20 years, the Garden of Remembrance (Gan Zikaron) Memorial Park has become an integral part of the fabric – and a true landmark – for the entire Washington Jewish community, the area's only community-based, non-profit Jewish cemetery. Beth Sholom has two new sections at Gan Zikaron including an interfaith section.

Explore the many benefits of pre-planning for you or your family. For more information, call 301-428-3000, or visit [www.gardenofremembrance.org](http://www.gardenofremembrance.org).



*Garden of Remembrance*  
GAN ZIKARON MEMORIAL PARK

*A Place For All Seasons  
to honor and Celebrate Life*





# Donations

## EDUCATION FUND

Bruce Zavos & Eileen Ebert in memory of David Nathanson  
Paula Nathanson in honor of Levi Ashwal's Bar Mitzvah

## FAYE COHEN MUSIC FUND

Morris & Norma Kelsey in memory of Shirley Strazza

## GENERAL FUND

Roseanne Patchen in memory of David Nathanson  
Anne & Michael Cohen in memory of David Nathanson  
Robert & Marjorie Cantor in memory of Fran Becker  
Gerry Goldgraben for the yahrzeit of R. Joan Vogel  
Nat & Sharyn Sadownik in memory of David Nathanson  
Howard & Shari Scher in honor of Marcia Newfeld  
Shana Potash for the yahrzeit of Albert Potash  
Shana Potash for the yahrzeit of Samuel Potash  
Alan & Sandy Winter in memory of Fran Becker  
Alan & Sandy Winter in memory of David Nathanson  
Shana Potash for the yahrzeit of Alec Meyer  
Judy Poiley- Nelson & Earl Nelson in memory of Shirley Strazza  
Jacqueline & John Haynes for the yahrzeit of Albert Potash  
Peter & Marcia Newfeld in memory of Shirley Strazza  
Peter & Marcia Newfeld in memory of Marilyn Blake  
Janet & Marty Potash for the yahrzeit of Nancy Gorelick  
Janet & Marty Potash for the yahrzeit of Alec Meyer  
Janet & Marty Potash in memory of Shirley Strazza  
Janet & Marty Potash in memory of David Nathanson  
Janet & Marty Potash in honor of Juliana Lynch's marriage  
Janet & Marty Potash in honor of Max Cantor's marriage  
Al & Sandy Winter for the yahrzeit of Bertha Winter

## GIFTSHOP/ SISTERHOOD

Louise Corso & Edward Myers for the yahrzeit of Philip Corso

## ROSE & JULES SHAPIRO G'MACH FUND

Matt & Hannah Feldman in memory of David Nathanson  
Alan & Sandy Winter in appreciation of David Bass for special kindness on Simchat Torah

## HINEINI

Susan Dwyer

## ISRAEL SUPPORT FUND

Gerry Royston & Dana Simel in memory of David Nathanson  
Robert & Marjorie Cantor  
Marc & Gayle Gordon for the yahrzeit of Dr. Milton Gordon  
Dan Grauman donation of USA/ Israel pins  
Ann Ungar & David Hill  
Rick Summerson  
Sharon Edelstein & Michael Smith  
Mike Eissenstat  
Bobbi Price for the yahrzeit of Samuel Kalb  
Bobbi Price for the yahrzeit of Barry Kalb  
Howard & Ibby Levine  
Sassan Shaool

## NEWFELD SOCIAL HALL FUND

Mike & Audi Nagi  
Roberta Aronovitch

## RABBI DISCRETIONARY FUND

Shirley Neufeld for the yahrzeit of Alexander Lazerowitz

## S-O-S FUND

Mark Vallon & Mary Mogan- Vallon

## TZEDEK FUND

Barbara Frederick & Michael Raderman for the yahrzeit of Arnold Light

## DEC. BIRTHDAYS

Hadassa Ben David Hessel	Joanna Kessler
Halee Helmer	Danny Ebinger
Andrew Mekelburg	Joan Abrams
Jonathan Zesati	Eleanor Ashkenazi
Amy Altman	Jenny Lazarus
Jessica Jackson	Sharon Payne
Bob Savitt	Michael Eissenstat
Arianna Schwartz	Andrew Ben David Hessel
Nathan Diaz	Adelaide Tully
Spencer Neufeld	Elise Saks
Fred Abeles	Darren Holst
Franna Ruddell	Charles Lenkin
Tom Griesacker	Barry Edland
Kira Mayo	Hunter Lieberman
Cindy Shubin	Kevin Eyler
Grant Lieberman	Elise Mekelburg
Jill Ascher	Reuben Goetzl
Shirley Zebovitz	Beckett Gordon
Susan Davis	Stefanie Cohen
Elizabeth Reiner	Benjamin Tepper
David Raju Rusnock	Gerald Reed
Katherine Hark	Pamela Lloyd
Venice Imes	Lydia Needle
Cantor Shulie Hersh	Aurisbel Nagi
Judith Spungen	Michael Smith
Hilary Ben David Hessel	Cheryl Chado
Rebecca Cressman	Jessica Fitzwater
Earl Nelson	Barbara Frederick
Dana Simel	Marion Weiss
Ana Luta	Leah Grasso
Dan Shykind	Edward Grauman
Sharon Lovitt-	Xander Ross
Nicholas	Fay Kaufman
Jacob Tepper	Michael Dwyer
Amy Allex	Barry
Deborah Blum	Diamondstone
Sydnee Elkon	Victor Buckwold
Linda Kincaid	Arlene Corby
Marcia Newfeld	Hyatt Gordon



## DEC. ANNIVERSARIES

Fred & Ann Abeles  
Sidney & Michelle Kandel  
Gail & Todd Fineberg  
David & Trish Ben-Avraham  
Philip & Mona Canter  
Darlene & Gary Carver  
Leonard & Margaret McWilliams  
Bradley & Heather Cohen



