



TEMPLE
EMANU-EL

HOLIDAY EDITION

End Of September &
October 2023

Fall
FESTIVAL
FOR FAMILIES
SEPTEMBER 24TH

HIGH
HOLIDAYS

continue at TEMPLE EMANU-EL
2023/5784

Family
Sukkot
PROGRAM
October 3rd

Contents

2 In the Temple

- 2 Shabbat Services, Torah Reading and Rabbinic Search
- 3 2023-24 Membership Pledge Drive
- 4 High Holydays Service Times and Food Drive

7 Neighborhoods

- 5 Join Sisterhood, and Brotherhood Meet-Up
- 6 Senior Connection, Jewish Music, and Brotherhood & Sisterhood Cooking
- 7 LGBTQIA Neighborhood

9 Programs

- 7 Movie Night and Book Group
- 8 Fall Festival
- 9 Let's Celebrate Sukkot: Luncheon and Family Sukkot Program
- 10 Congregational Shabbat Italian Dinner
- 11 Temple Tots with Curious Creatures and Family Shabbat
- 12 SMARTY: Welcome Back to Religious School PARTY!
- 13 Community Breakfast with the NorthShoremen Men's Chorus
- 14 Birthdays
- 15 Anniversaries

16 Contributions

- 18 Rabbi's Discretionary Fund
- 19 Yahrzeit Memorial Wall
- 20 Condolences
- 21 Planned Giving
- 22 Ways to Remember
- 23 Calendar



In the Temple

**Click to join
Shabbat Service**
via YouTube

Shabbat Worship Services: *Fridays at 6pm*

Services offered in person and via YouTube

Join Rabbi Crystal and Jon Nelson for uplifting services every Friday night. We strongly recommend that unvaccinated individuals continue to wear face-coverings while inside the building and Sanctuary.

**Click to join
Torah Study**
via Zoom

Torah Study in October: *Saturday at 10am*

October 14th: with Rabbi Allison Peiser

Torah Readings in October:

October 6/7 –
Simchat Torah
Holiday Torah Portion
Torah: Deuteronomy 33:1-34:12 & Genesis 11:2-3
Haftarah: Joshua 1:1-18

October 13/14
Parashat B'reishit
Torah: Genesis 1:1-6:8
Haftarah: Isaiah 42:5-43:10

October 20/21
Parashat Noach
Torah: Genesis 6:9-11:32
Haftarah: Isaiah 54:1-55:5

October 27/28
Parashat Lech L'cha
Torah: Genesis 12:1-17:27
Haftarah: Isaiah 40:27-41:16



TEMPLE
EMANU-EL

Rabbinic Search *and* Transition

OUR COMMUNITY
OUR VOICES
OUR FUTURE

Click Here



If you have not done so already, please confirm your Temple Emanu-El membership for the 2023-2024 year.

Together, we can make a big difference.

Please give as you are able.

Sustaining Amount is \$2,695.

RECOGNITION FOR TOTAL ANNUAL GIVING

Circle of Leadership...\$12,500

Sapphire..... \$7,500

Gold..... \$3,600

Diamond.....\$10,000

Platinum..... \$5,000

All members that donate at one of the above recognition levels (combined Pledge and Annual Appeal gift) will be recognized on a plaque in the Temple lobby as well as at a private "Thank You" reception.

[Click to Pledge](#)

2023-24 **MEMBERSHIP** PLEDGE

**CONNECT.
CREATE.
BELONG.**

HIGH HOLYDAYS

AT TEMPLE EMANU-EL 2023/5784

SERVICE TIMES

We will be together, as one community, both in-person and on YouTube.
For those worshipping from home, you can pick up prayer books and the Roll of Remembrance during office hours.

Monday, September 25th

10:00am: Yom Kippur Morning Service

1:00pm: Yom Kippur Afternoon Service

2:30pm: Yom Kippur Family Service

4:00pm: Yizkor Service

5:00pm: Neilah Service

Saturday, September 30th

10:30am: Sukkot Festival Service

Sunday, October 1st

12:00pm: Kever Avot at Temple Emanu-El Memorial Park

Friday, October 6th

6:00pm: Erev Simchat Torah and Shabbat

Monday, October 9th

10:30am: Atzeret/Simchat Torah Festival Service (including Yizkor)

[Click Here for YouTube](#)

HIGH HOLYDAY FOOD DRIVE:

In keeping with tradition, we are collecting food for the Marblehead Food Pantry. Don't want to go to the market?
Use any delivery service to send items straight to the Temple! (393 Atlantic Avenue)

LIST OF ITEMS NEEDED:

Paper Towels
Toilet Paper
Canned Fruits & Vegetables
Cereal
Rice
Pasta & Pasta Sauce
Other Non-perishables

DROP-OFF TIMES:

Sunday, 9/24 at Kol Nidre Service
Monday, 9/25 at Yom Kippur Service
Tuesday, 9/26 9am-5pm

Neighborhoods

[Click here to join all Zoom meetings](#)

Join Sisterhood!

The Sisterhood is an organization of women of all ages, backgrounds and interests, who find joy in one another as we come together to celebrate our heritage, socialize, and learn together. We work to promote the interests of Judaism, serving the needs of our Temple and the community, while building bonds of friendship among women. Temple Emanu-El Sisterhood wants and needs the support of all the women in the congregation.

Register Now and be included in our Paid-Up Dinner on November 1st!



Sisterhood Events for 2023/2024:

Sisterhood "paid up" dinner:
Wednesday, November 1st at 6:30pm

Sisterhood "pot luck" supper w/ Yankee swap:
Wednesday, December 13th at 6:30pm

Hestia Creations @ Temple Emanu-El in January (TBA)

Thai Cooking Demo
Tuesday, February 6th at 6:30pm

Sisterhood Community Breakfast with Guest Speaker
Sunday, March 3rd at 10:00am

Sisterhood led Shabbat service:
Friday, June 7th

Join Sisterhood



Connecting at Sisterhood Events often brings on **SMILES!**

Brotherhood Neighborhood Meet-Up

Wednesday, October 18th at 7:30pm

Brotherhood will meet-up for drinks at a local bar on the third Wednesday of each month.

Email Rob Yomtov by clicking button below if you are interested in going.

EMAIL ROB



Neighborhoods

Senior Connection Neighborhood

Every Tuesday morning in the Temple's Youth Lounge at 11am

Rabbi Allison Peiser will lead the following lecture:

October 17th: *Jewish Development in Christian and Muslim Nations*

Parking is on the right side of the Temple. Enter through the Temple's Religious School entrance.



Now BACK IN PERSON! Jewish Music Neighborhood

Wednesday, October 18th at 7pm
in the Sanctuary

All ages and musical abilities welcome—musical experience not necessary...just come share the joy!

Jon Nelson, Music Director, leads the fun!



Join us for Sisterhood and Brotherhood Cooking

Thursday, October 19th at 7pm

Monthly, members of our congregation gather in our kitchen to prepare Shabbat meals for fellow Temple members in need, whether they have recently suffered a loss, had surgery, or are busy caring for a newborn baby. These meals are so appreciated by all who receive them.

Please enter from the back kitchen door.
All recipes and ingredients are provided.

Neighborhoods *continued*

LGBTQIA Neighborhood

The LGBTQIA Neighborhood meets periodically for educational and social gatherings. We are interested in hearing from all who are interested!

Call Bob Goldman at 617-378-1776.

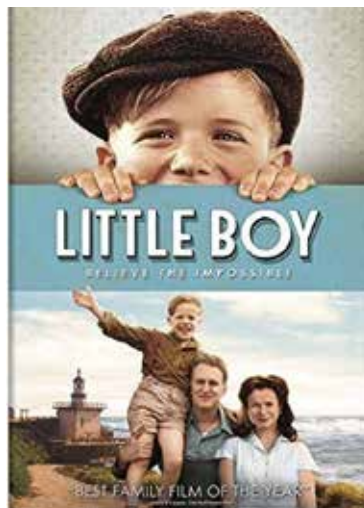
Temple Programs in October:

Movie Night:

Wednesday,
October 4th at 7pm

The Movie for September will be **"Little Boy"** available to watch on Netflix

When his devoted dad is called away to war, a friendless young outcast turns to God to get his father back home in one piece.



Movie Night meets on the first Wednesday of the month. Watch the movie on Netflix or Amazon Prime, and then join us on Zoom for a discussion. [past comes calling.](#)

ZOOM



NEXT MONTH: **"The Debt"**

Movie Night will be back at the Temple in person on Wednesday, November 1st at 7pm!

The movie will be shown in the Temple's Fellowship Room and streamed through Amazon Prime.

Temple Book Group

Monday, October 2nd at 7pm
on Zoom

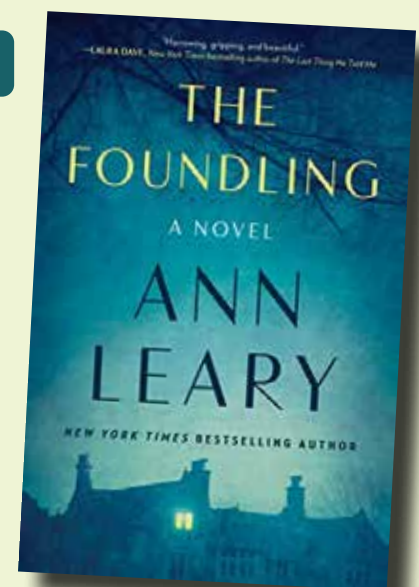
"The Foundling"

A novel by Ann Leary

The story of two friends, raised in the same orphanage, whose loyalty is put to the ultimate test when they meet years later at a controversial institution—one as an employee; the other, an inmate.

Everyone is welcome!

RSVP



A RELIGIOUS SCHOOL EVENT!



SEPTEMBER
24TH

10 to
11:30am

Fall FESTIVAL FOR FAMILIES

Learn About & Celebrate
Rosh Hashanah, Yom Kippur, Sukkot & Simchat Torah

Activities Include:

APPLE PRINT DESIGNS
INTENTIONS FOR THE NEW YEAR
CREATING EDIBLE SUKKAHS
SUKKAH DECORATIONS
TORAH SCROLL TOUR

TEMPLE
EMANU-EL

OPEN TO ALL!

If your child is **NOT** a Religious School student, please [CLICK HERE](#) to **REGISTER**

LET'S CELEBRATE SUKKOT

at Temple Emanu-El!



Sukkot Festival Service & Luncheon

Saturday,
September 30th
at 10:30am

Join us for a luncheon after the service.

RSVP



Family Sukkot Program

Tuesday, October 3rd at 5:30pm

Sponsored by: Families with Children Neighborhood

Join us for a pasta dinner & Sukkot craft! Music provided by **PHILIP ALEXANDER** in the outdoor sukkah.

This event is FREE and open to everyone! You do NOT need to be a Temple member to attend!

RSVP



TEMPLE
EMANU-EL

CONNECT. CREATE. BELONG
393 Atlantic Avenue, Marblehead, MA www.emanu-el.org



Friday, October 20th
following Shabbat Services at 6pm

Let's enjoy an Italian dinner together!
 featuring Boston Cannoli Co. for dessert!

COST: \$20 per person | \$12 for children aged 5-12 | **FREE** for children under 5
 \$54 immediate family cap

RSVP



Click here to
RSVP!

Temple tots

sponsored by Families With Children

Temple Tots is a Sunday morning program with activities and programs designed for children 7 and under and their parents (or caregivers) **Free and open to all!**

**Join us for Curious Creatures
in honor of Parshat Noah!**

Sunday, October 22nd at 11:30am

Upcoming dates for Temple Tots:

November 19th | January 21st | March 10th | May 19th

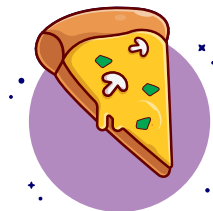


Family Shabbat

Friday, November 3rd at 5:30PM



Enjoy a fun, musical
family service!



Eat a
yummy dinner!



Participate in a
teacher-led craft!



Listen to an
interesting story!

TEMPLE
EMANU-EL

FREE!

RSVP

CONNECT. CREATE. BELONG
393 Atlantic Avenue,
Marblehead, MA 01945



***WELCOME BACK
TO RELIGIOUS SCHOOL***

PARTY

FOR SMARTY GRADES 2-8

Sunday, October 15th from 11:30am-1pm

Join your friends and meet new ones!
Hang out in the youth lounge at the Temple.

ENJOY FREE PIZZA, ICE CREAM & GAMES!

RSVP

SMARTY:

Swampscott Marblehead Area Reform Temple Youth
is the youth group of Temple Emanu-El. We meet once a
month for recreational and community service activities.



Open to
EVERYONE!
RSVP at
emanu-el.org

Community Breakfast

IN THE SOCIAL HALL

sponsored by the
Senior Connection Neighborhood

\$12 pp \ RSVP

Entertainment provided by:

The Northshoremén MEN'S CHORUS

Tuesday, November 5th, 10am - 12pm



Birthdays

| | | | |
|------------|------------------|------------|--------------------|
| October 1 | Allison Solomon | October 15 | Gayle Stoll |
| October 1 | Don Ganz | October 15 | Brad Sandler |
| October 1 | Betty Dyer | October 15 | Marlene Geiman |
| October 1 | Robert Badolato | October 15 | Ximena Talcofsky |
| October 1 | Ronald Lamkin | October 16 | Steven LaKind |
| October 1 | Samara Martin | October 17 | Shelley Tregor |
| October 2 | Alan Kagan | October 17 | Beth Cabrera |
| October 2 | Eric Reines | October 17 | Andrea York |
| October 2 | David Katz | October 17 | Miriam Shutzer |
| October 2 | Pauline Spirito | October 18 | Meredith Freed |
| October 2 | Leslie Hazlett | October 18 | Robert Levy |
| October 3 | Leonard Spiewak | October 18 | Cindy Garfield |
| October 4 | Steven Keenholtz | October 18 | Marcy Nevins |
| October 4 | Rhian Waterberg | October 19 | Beverly Clark |
| October 5 | Jacob Waxman | October 19 | Deborah Edinburg |
| October 5 | Brant Firestone | October 21 | Eric Talcofsky |
| October 5 | Albert Pica | October 21 | Jane Goldstein |
| October 6 | Larisa Forman | October 22 | Robert Gladstone |
| October 6 | Marc Barden | October 22 | Sandra Rotman |
| October 6 | Jon Richmond | October 23 | Emily Burt |
| October 6 | Rosie Segil | October 23 | Deborah Lack |
| October 7 | Sandra Kanosky | October 23 | Tanya Tupper |
| October 8 | Melinda Grosser | October 24 | Risa Kahn |
| October 9 | Richard Kessel | October 25 | Marilyn Winick |
| October 9 | Emily Daviau | October 25 | Matthew Brown |
| October 10 | Daniel Orenstein | October 25 | Jessica Letwin |
| October 11 | Jason Wachtel | October 25 | Robert Greenbaum |
| October 11 | Joel Whitman | October 27 | Gary Brenner |
| October 12 | Linda Weinstein | October 28 | Robert Liptrot |
| October 12 | Nancy Clasby | October 29 | Sue Sussman |
| October 12 | Jeanette Ablow | October 29 | Francine Goldstein |
| October 14 | Marc Rubin | October 29 | David Milkes |
| October 14 | Fran Kalishman | October 30 | Blair Brown |
| October 14 | Susan Weiss | October 31 | Robert Alpert |
| October 14 | Joe Maney | October 31 | Bruce Goldberg |
| | | October 31 | Heidi Abber-Berman |

Birth Announcement!

Noah James Brine born on: 8/21/2023

Grandson of Debbie and Steve Field, Son of Joanna and Cory Brine,
Brother of Max

Anniversaries

| | | |
|------------|--------------------------------------|------------------|
| October 2 | Ashley & Rhian Waterberg | 13th Anniversary |
| October 5 | Carol & Robert Cipriani | 32nd Anniversary |
| October 5 | Connie & Peter Harris | 43rd Anniversary |
| October 7 | Jillian & Brian Oppenheim | 16th Anniversary |
| October 8 | Brenda & Alan Kagan | 57th Anniversary |
| October 9 | Blair & Peter Brown | 7th Anniversary |
| October 9 | Sharon & Randy Chapman | 29th Anniversary |
| October 9 | Alyssa & Steven Fafel | 19th Anniversary |
| October 9 | Lisa & Daniel Harris | 19th Anniversary |
| October 10 | Lynn & Marc Zabar | 30th Anniversary |
| October 10 | Susan Feinberg Stelk & Wayne Stelk | 41st Anniversary |
| October 10 | Stephanie & Jason Wachtel | 24th Anniversary |
| October 11 | Ronda & Carl Redfield | 2nd Anniversary |
| October 11 | Lynne & Robert Berk | 42nd Anniversary |
| October 12 | Jamie & Robert Yomtov | 9th Anniversary |
| October 13 | Diane & David Goldenberg | 38th Anniversary |
| October 13 | Ellen & Norman Erlich | 49th Anniversary |
| October 13 | Lisa & Marc Barden | 39th Anniversary |
| October 13 | Jenny Johnson & Rob Cocuzzo | 6th Anniversary |
| October 15 | Deborah & Steven Field | 45th Anniversary |
| October 15 | Cynthia Canavan & Mark Chambers | 40th Anniversary |
| October 17 | Sharon & George Orfaly | 24th Anniversary |
| October 20 | Risa & Laurence Kahn | 22nd Anniversary |
| October 20 | Heidi & Marc Rubin | 27th Anniversary |
| October 20 | Karen Gruskin & Temple Smith | 33rd Anniversary |
| October 21 | Joan & Richard Kessel | 44th Anniversary |
| October 22 | Michelle Gottlieb & Daniel Orenstein | 28th Anniversary |
| October 22 | Beth & Paul Tassinari | 28th Anniversary |
| October 23 | Larisa & Ethan Forman | 29th Anniversary |
| October 23 | Sheila & David Katz | 47th Anniversary |
| October 25 | Marlene & Robert Badolato | 53rd Anniversary |
| October 25 | Sharon & Jonathan Gold | 45th Anniversary |
| October 25 | Shari & Stephen McGuirk | 36th Anniversary |
| October 25 | Robyn Frost & Michael Chefitz | 31st Anniversary |
| October 25 | Jeri & Peter Barker | 42nd Anniversary |
| October 28 | Claudia & Michael Kaufman | 39th Anniversary |
| October 28 | Dara & Jeffrey Frankel | 44th Anniversary |
| October 29 | Mindy & Steven Evanter | 45th Anniversary |
| October 29 | Julie & James Cummings | 34th Anniversary |
| October 31 | Susan & James Rudolph | 42nd Anniversary |
| October 31 | Kate & Joseph Kahn | 31st Anniversary |

October Contributions

Tributes Fund

In honor of...

Rabbi Bud Abramowitz's special birthday
The Federman Family

Loretta Attardo and Ralph Rotman's wedding anniversary
Suzanne and Brian Fin

Francene and Todd Kanter's wedding anniversary
Suzanne and Brian Fin

Mary McCormick-Gendzel and Jack Gendzel's wedding anniversary
Suzanne and Brian Fin

Marla and David Meyer's wedding anniversary
Suzanne and Brian Fin

Gail and Dan New's wedding anniversary
Suzanne and Brian Fin

Betsy and Dan Rooks' 40th wedding anniversary
Virginia Dodge
Suzanne and Brian Fin

Ruthie and Robert Salter's wedding anniversary
Suzanne and Brian Fin

Bonnie and Brian Strasnick's wedding anniversary
Suzanne and Brian Fin

Allison and Matthew Swartz's wedding anniversary
Suzanne and Brian Fin

Estelle and Joel Whitman's 65th wedding anniversary
Virginia Dodge

Cheryl and Robert Yoffe's wedding anniversary
Suzanne and Brian Fin

Hope Zabar's special birthday
Virginia Dodge

In memory of...

Fred Ehrich
Avis Feldman

Joseph Erlich, at yahrzeit
Ellen and Norman Erlich

Shirley Erlich, at yahrzeit
Ellen and Norman Erlich

Bertha Faifman, at yahrzeit
Faith and Eric VanDusen

Burton Forman, at yahrzeit
Amy and Adam Forman

Sylvia Goldstein, mother of Darlene Goldstein
Roz and Marty Goldberg

Fred Hennick, at yahrzeit
Rachel, Tom, Zach and Alex Perrella

Peter Levin, at yahrzeit
Marjorie Levin

Hyman Merlis, at yahrzeit
Mindy and Steve Evanter

Miriam Merlis, at yahrzeit
Mindy and Steve Evanter

Belle Mogill, at yahrzeit
Donna Cohan

Harry Mogill, at yahrzeit
Donna Cohan

Alfred New, at yahrzeit
Laura and Jim New

Libby New, at yahrzeit
Laura and Jim New

Arlene Padulsky
Rosaline Brenner

Doris Pearlman, at yahrzeit
Linda and Larry DuKatz

Judith Swartz, mother of Matthew Swartz
Suzanne and Brian Fin
Lois and Bobby Kaplan
Cindy and Ron Matloff

Bible and Prayerbook Fund

In memory of

Neil Chayet
The Family of Neil Chayet

Landscape Fund*In memory of...***Joel Shapiro, at yahrzeit**
Lynn and Marc Zabar and Family***Amy Saltz Library Fund****In memory of...***Florence Buckingham, at yahrzeit**
Cynthia Ittleman and Howard Nunes**Maudette Devenow**
Roberta Frost Rosenthal**Sammye Harrison**
Roberta Frost Rosenthal
Eileen and Luke Whiting**Norman A. Jepsky, at yahrzeit**
Roberta Frost Rosenthal**Arlene Padulsky**
Andrea Liftman**Phyllis H. Shutzer, at yahrzeit**
Carole and Kenneth Shutzer and Family**Arnold Weiss**
Roberta Frost Rosenthal***Memorial Park Fund****In memory of...***Anne W. Bornstein, at yahrzeit**
Linda and Arthur Schwartz**Harvey Hoffman, at yahrzeit**
Michael Hoffman and Family**Tilly Miller, at yahrzeit**
Nancy Appel**Evelyn D. Rozenkrantz, at yahrzeit**
Howard Rosenkrantz**Judith Swartz, mother of Matthew Swartz**
Gail New***Music Fund****In memory of...***Susan Strassberg, sister of Mindy Evanter**
Beverly A. Kahn***Oneg Shabbat Fund****In memory of...***Peter Littmann, at yahrzeit**
Julie Ann and Eric Littmann**Marion Van Ments, at yahrzeit**
Julie Ann and Eric Littmann***Religious School Fund****In honor of...***Delia Heit becoming Bat Mitzvah**
Joan and Richard Kessel***Security Fund****In memory of...***Basya Braginsky, at yahrzeit**
Nelly Braginsky***Sisterhood Fund****In memory of...***Vivian Rowe, sister-in-law of Harriet Kaminsky**
Ann Laaff***Youth Programming****In memory of...***Mary Berger, at yahrzeit**
Barbara B. Cantor**Katherine Gertz, at yahrzeit**
Ann Klayman**Lenore A. Greenbaum, at yahrzeit**
Heidi and Bob Greenbaum

Rabbi's Discretionary Fund

In appreciation of...

Rabbi Crystal

Estelle and Joel Whitman

In honor of...

Brad Epps

Iris and Eric Reines

Rabbi Emeritus Discretionary Fund

In memory of...

Fredric Ehrich

Louise Lief

Giving a fund donation in honor of a birthday or anniversary is a great way to let a friend know you are thinking of them. *You can do this by filling out the form at emanu-el.org or by calling the Temple office at: 781-631-9300.*

October 2023

Perpetual Yahrzeits

October 7

Bruce Bank
 Joyce Ellen Ferbank
 David Leonard Field
 Albert Goldstein
 Carol P. Gordon
 Joseph Gouchberg
 Rose Greenbaum
 Anna Hoffman
 Larry Kasser
 Harry Langburd
 Nathan Levin
 Harry Olken
 Harry Paul
 Harriet Karol Shaievitz
 Harry Silberman

October 14

Dorothy Berger
 Doris Brightman
 George Clayman
 Al Federman
 Ronald Lemoine
 Mark B. Lempert
 Gary Levin
 Charles Sahl
 Anna Schachter
 Michael Steinberg
 Yale Strogoff
 Celia Turin
 Mary Weiss
 Robert Winer

October 21

Alexander Blume
 Edmund Jerome Brown
 Hyman Forman
 Beatrice Grossman
 Anne S. Herlich
 Abraham Lubarsky
 Barbara Mascott Mover
 Lena Sandler
 Hyman Simon
 Carol R. Simons
 Eliot G. Small
 Rose Strome

October 28

Benjamin Barton
 Ruth Charlotte Brown-Solomon
 Minna Cohen
 Ruth Cubell
 R.A. Farrer
 Beverly F. Gerson
 Arthur Kamin
 Pershing Kepnes
 Clara Krauss
 Sara Laibman
 Frances A. Levin
 Michael Paul Nadell
 Bernard Remis
 Frederick Sands
 Jessie Schawbel
 Pearl Sheer
 David Shutzer
 Lois Stern



Condolences

On behalf of the entire congregation, we
extend our condolences to the following
families who have recently lost a loved one:

Cynthia Tramonte
On the loss of her cousins
Eliot Chertok and Marilyn Pressman

Ann Laaff
On the loss of her brother
Lee Karelitz

Mark Medlinsky
On the loss of his father
Arnold Alexander

Planned Giving

Have you included Temple Emanu-El in your plans?

***Make a positive impact on the Temple Emanu-El community
that will last for years, even generations, to come.***

Planned, or Legacy Giving, is a powerful way to ensure that Temple Emanu-El will continue to be an enriching community that supports Judaism and Jewish life here on the North Shore.

Giving can be arranged through life insurance, annuities, a percentage/set amount of estate in a will, as well as other options.

To learn more about Planned Giving,
and adding to our Endowment,
please contact Jaime Meyers at **781-631-9300** or
jmeyers@emanu-el.org.

Additionally, please be in touch if you have already included
Temple Emanu-El in your estate plans.



Ways to Remember

At Temple Emanu-El, there are many ways to honor, celebrate, and remember dear friends, family, and past loved ones.

Memorial Wall/Perpetual Yahrzeits

It is a widely observed Jewish tradition to commemorate the passing of a loved one by remembering them on a dedicated Memorial Wall. The Temple Emanu-El Memorial Wall contains a plaque with the name and date of passing. Additionally, and in keeping with the ancient Jewish custom of honoring departed ones with a stone on a marker, each plaque also has a carrier where you can place a tumbled stone on anniversary dates, or anytime at all! Your loved one's name is read at time of yahrzeit in perpetuity.

Memorial plaques ask for a donation of \$750.

Tree of Life

Located in our lobby, the Temple's welcoming Tree of Life gives all who wish an opportunity to celebrate life's joyful blessings in perpetuity by inscribing them on one of its beautiful leaves or rocks. Celebrate your simcha - weddings, births, B'nei Mitzvah, anniversaries, graduations, milestones.

Honor someone you love - children, parents, family, friends, teacher.

Tree of Life leaves and rocks ask for a donation of: \$500 - \$10,000.

Bookplates

Temple Emanu-El also offers several opportunities to remember your loved ones with the dedication of a book to the Temple Library or prayer book used at our weekly Shabbat service, a High Holyday machzor or Torah commentary. All books contain a tribute bookplate honoring and celebrating your loved one's name.

Bookplates ask for a donation of: \$36 - \$100.

To learn more about any of these forms of remembrance, please contact Temple Executive Director Jaime Meyers at 781-631-9300 or jmeyers@emanu-el.org.

| Sun | Mon | Tue | Wed | Thu | Fri | Sat |
|---|--|---|---|---|--|--|
| <p>24 EREV YOM KIPPUR Fall Festival for Families Program 10am</p> <p>Holidays Together Meal 6pm</p> <p>Kol Nidre Service</p> | <p>25 YOM KIPPUR Temple Office Closed</p> <p>Morning Service: 10am</p> <p>Afternoon Service: 1pm</p> <p>Family Service 2:30pm</p> | <p>26 Temple Office Closed</p> | <p>27 Hang Out Lounge w/snack for 3rd -6th graders 2:30pm</p> <p>Hebrew Early Session 3:15pm</p> <p>Hebrew Late Session 4:15pm</p> | <p>28</p> | <p>29 EREV SUKKOT</p> <p>Shabbat Worship Service 6pm</p> | <p>30 SUKKOT FESTIVAL SERVICE</p> <p>Luncheon 12pm</p> |
| <p>1 Confirmation 9am</p> <p>Religious School 9am</p> <p>Post-Confirmation 10:30am</p> <p>KEVER AVOT 12pm</p> | <p>2 Book Club on Zoom 7pm</p> | <p>3 Senior Connection: meeting 11am (in person)</p> <p>FAMILY SUKKOT 5:30pm</p> | <p>4 Hebrew Early Session 3:15pm</p> <p>Hebrew Late Session 4:15pm</p> | <p>5</p> | <p>6 Shabbat Worship Service and Simchat Torah 6pm</p> | <p>7 SIMCHAT TORAH 10:30am</p> |
| <p>8</p> | <p>9 Indigenous People Day Temple Office Closed</p> | <p>10 Senior Connection: meeting 11am (in person)</p> | <p>11 Hebrew Early Session 3:15pm</p> <p>Hebrew Late Session 4:15pm</p> <p>7th Grade 5:45pm</p> | <p>12</p> | <p>13 Shabbat Worship Service: 6pm</p> | <p>14 Torah Study 10am</p> |
| <p>15 Religious School 9am</p> <p>SMARTY 11:30am</p> | <p>16</p> | <p>17 Senior Connection: meeting with Rabbi Allison 11am (in person)</p> | <p>18 Hebrew Early Session 3:15pm</p> <p>Hebrew Late Session 4:15pm</p> <p>Jewish Music Neighborhood 7pm</p> <p>Brotherhood Meet-Up 7:30pm</p> | <p>19 Brotherhood/sisterhood Cooking 7pm</p> | <p>20 Shabbat Worship Service: 6pm</p> <p>Italian Shabbat Dinner 7pm</p> | <p>21</p> |
| <p>22 Confirmation 9am</p> <p>Religious School 9am</p> <p>Post-Confirmation 10:30am</p> <p>Temple Tots 11:30am</p> | <p>23</p> | <p>24 Senior Connection: meeting 11am (in person)</p> | <p>25 Hebrew Early Session 3:15pm</p> <p>Hebrew Late Session 4:15pm</p> | <p>26</p> | <p>27 Shabbat Worship Service: 6pm</p> | <p>28</p> |
| <p>29 Confirmation 9am</p> <p>Religious School 9am</p> | <p>30</p> | <p>31 Senior Connection: meeting 11am (in person)</p> | <p>All Zoom meetings this month use the same link— except for events outside of Temple Emanu-El. All services are in person and on Facebook Live. All Religious School classes will meet in person.</p> <p>Click here to watch on YouTube</p> <p>Visit emanu-el.org</p> <p>Click here to join Zoom meetings</p> | | | |



Rabbi Darryl Crystal, Interim Rabbi
Jaime Meyers, Executive Director
Allison Peiser, Rabbi & Temple Educator
Gail New, President
Rabbi David Meyer, Rabbi Emeritus

TEMPLE EMANU-EL BULLETIN
published monthly
by Temple Emanu-El,
393 Atlantic Ave.,
Marblehead, MA 01945