

January 2023

Bulletin

TEMPLE
EMANU-EL



Contents

2 In the Temple

- 2 Shabbat Services, Torah Readings & Rabbinic Search
- 3 2022-23 Year-End Giving
- 4 Temple Library: What's New and Last Month's Selections

6 Neighborhoods

- 5 Family Shabbat and Temple Tots
- 6 Jewish Music Neighborhood , Senior Connection, and LGBTQIA
- 7 Middle Eastern Cooking Class and Join Sisterhood
- 8 Sisterhood and Brotherhood Neighborhoods and Tikkun Olam

9 Programs

- 9 Movie Night, Mah Jongg and Book Group
- 10 SMARTY Derby Lane and Flatbread Pizza
- 11 Memorial Park
- 12 Israel Turns 75
- 13 Our Stories about the Stories in the Bible
- 14 Birthdays
- 15 Anniversaries and Birth Announcements

16 Contributions

- 18 Rabbi's Discretionary Fund
- 19 Yahrzeit Memorial Wall
- 20 Condolences
- 21 Planned Giving
- 22 Ways to Remember
- 23 Calendar



In the Temple

**Click to join
Shabbat Service**
via Facebook Live

Shabbat Worship Services: *Fridays at 6pm*

Services offered in person and via Facebook Live

Join Rabbi Meyer and Jon Nelson for uplifting services every Friday night. We strongly recommend that unvaccinated individuals continue to wear face-coverings while inside the building and Sanctuary.

**Click to join
Torah Study**
via Zoom

Torah Study in January *Saturdays at 10am*

The first two Saturdays of the month via Zoom (not in person)

January 7th: with Rabbi Allison Peiser

January 14th: with Rabbi David Meyer

Torah Readings in January

January 6/7, 2023

Parshat Vayechi

Torah: Genesis 47:28 – 50:26

Haftarah: 1Kings 2:1-12

January 13/14, 2023

Parshat Shemot

Torah: Exodus 1:1 – 6:1

Haftarah: Isaiah 27: 6 – 28:13;
29:22-23

January 20/21, 2023 –

Parshat Vaera

Torah: Exodus 6:2 – 9:35

Haftarah: Ezekiel 28:25 –
29:21

January 27/28 –

Parshat Bo

Torah: Exodus 10:1 – 13:16

Haftarah: Jeremiah 46:13 –
46:28



TEMPLE
EMANU-EL

Rabbinic Search
and Transition

OUR COMMUNITY
OUR VOICES
OUR FUTURE

Click Here

2022-23 MEMBERSHIP PLEDGE

CONNECT. CREATE. BELONG.

If you have not done so already, please confirm your Temple Emanu-El membership for the 2022-2023 year.

Together, we can make a big difference.

Sustaining Amount is \$2,640.

RECOGNITION FOR TOTAL ANNUAL GIVING

Circle of Leadership...\$12,500
Diamond.....\$10,000

Sapphire..... \$7,500
Platinum..... \$5,000

Gold..... \$3,600

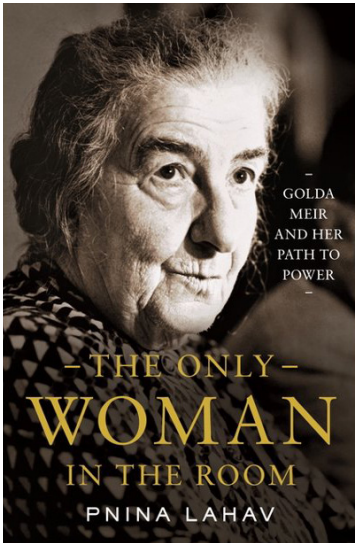
All members that donate at one of the above recognition levels (combined Pledge and Annual Appeal gift) will be recognized on a plaque in the Temple lobby as well as at a private Thank You reception.

[Click to Pledge](#)



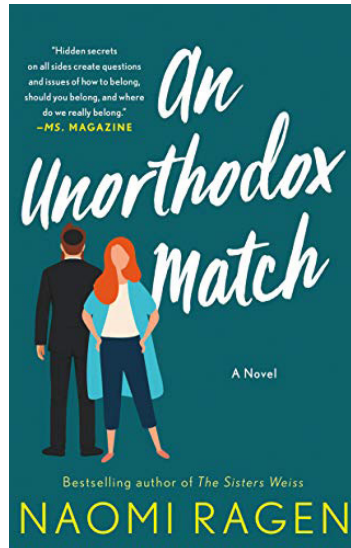
What's new in our Temple Library:

Feel free to contact Amy Saltz at 781-718-0477 to make arrangements to borrow or return items.



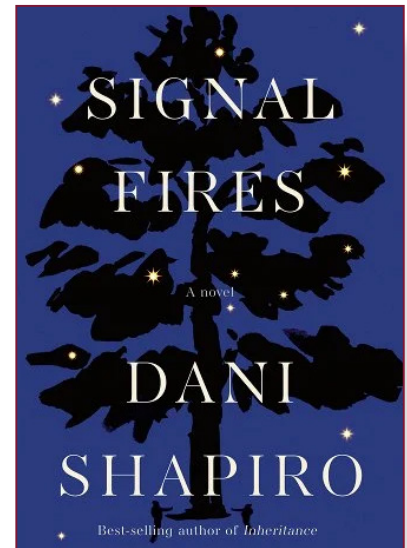
The Only Woman in the Room: Golda Meir and Her Path to Power
by Pnina Lahav

The life of Golda Meir is re-examined through a feminist lens, focusing on her recurring role as a woman standing alone among men.



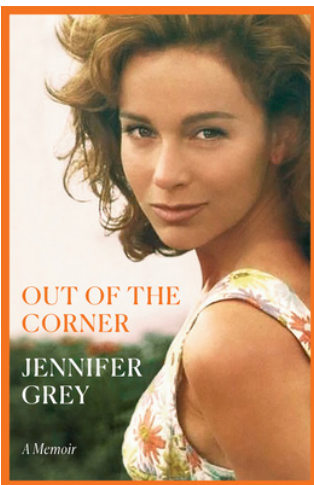
An Unorthodox Match
by Naomi Regen

Hidden secrets on all sides create questions and issues of how to belong, should you belong, and where do we really belong.

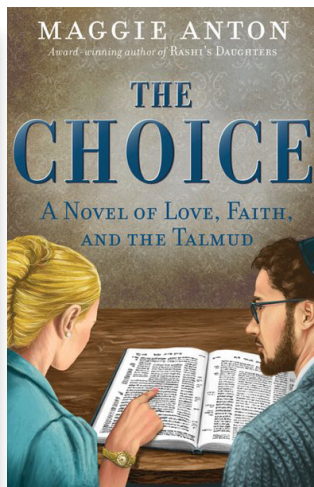


Signal Fires
by Dani Shapiro

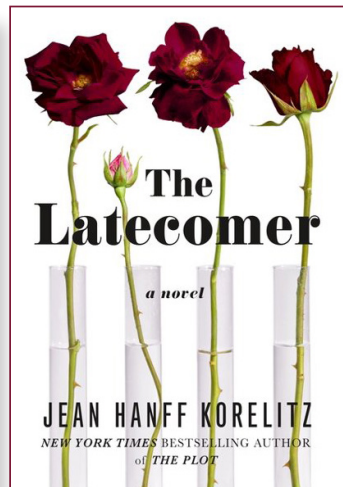
This is the author's first work of fiction in fifteen years, and she returns with a riveting novel that explores the ties that bind families together and the secrets that tear them apart.



Out of the Corner by Jennifer Grey
A candid and spirited memoir of identity lost and found from the star of the iconic film, *Dirty Dancing*.



The Choice: A Novel of Love, Faith, and the Talmud by Maggie Anton
The award-winning author of *Rashi's Daughters* takes characters inspired by Chaim Potok and ages them into young adults in 1950s Brooklyn.



The Latecomer
by Jean Hanff Korelitz
The story of a New York City family, their triplets born during the early days of IVE, and their fourth child.



Family Shabbat

Friday, January 6th at 5:30pm

Join Us on the following Fridays at 5:30pm:
February 3rd | March 31st | May 5th

FREE and Open to All Families! [Click Here to RSVP](#)



Rabbi Meyer and Jon Nelson
lead a fun, musical service!

Dinner, crafts & a story with
Heather Greenberg will follow!



Temple tots

A New Name and Look!
Musical Program for children 0-5 and their families

Sunday, February 5th at 11:30am
"Mary Poppins" joins us to perform stories and songs!

RSVP

Neighborhoods

[Click here to join all Zoom meetings](#)

Jewish Music Neighborhood:

Wednesday, January 18th, at 7:00 pm
via Zoom

Israel Rocks!

Please join us as we listen to and discuss some of the influential Israeli pop stars of the 60s, 70s, and 80s with our knowledgeable and entertaining director, Jon Nelson. You don't want to miss this fun Music Neighborhood Zoom session!



Senior Connection Neighborhood

Tuesday mornings in the Temple's Youth Lounge at 11:00am

Parking is on the right side of the Temple. Enter through the Temple's Religious School entrance.



LGBTQIA Neighborhood

The LGBTQIA Neighborhood meets periodically for educational and social gatherings. We are interested in hearing from all who are interested!

Call Bob Goldman at 617-378-1776.

Sisterhood *presents* Middle Eastern Cooking Class with Molly Winsten, RD

Wednesday, January 11th, 6:30pm to 8:30pm

WHERE: Temple Emanu-El Kitchen

COST: \$45 Per Person

(payment due at the time of registration)

CLASS SIZE: Limit 20 People

Please join us as **Molly Winsten**, a Registered Dietitian with a Masters in Nutrition, shows us how to prepare delicious Middle Eastern food. Molly loves sharing her passion for food!

She currently works as the Operations Manager at Freedom Bakery, a mass production manufacturing facility in Woburn that produces donuts free from gluten, dairy, soy, peanuts, and tree nuts.

Molly also does live cooking, television cooking, and catering including cooking on the food network, live demos at Boston Public Market, children's classes, and sharing recipes on social media (@onmollysplate). In addition to food, Molly is passionate about theater and attends shows regularly, and she also loves sports and is a part of the National Champion Boston Renegades, a professional Women's Tackle Football Team!

Click to sign up below or call the Temple Office at: 781-631-9300

RSVP



Molly's Menu to Savor & Enjoy

Appetizers

Beef Kibbeh
Dips - Lemon tahini, hummus, baba ganoush
with Pita and crudité

Main Course

Salmon in Chraime Sauce
with vegetables and gluten free couscous

Dessert

Tishpisti (Sephardic Jewish nut cake)

Join Sisterhood!

The Sisterhood is an organization of women of all ages, backgrounds and interests, who find joy in one another as we come together to celebrate our heritage, socialize, and learn together. We work to promote the interests of Judaism, serving the needs of our Temple and the community, while building bonds of friendship among women. Temple Emanu-El Sisterhood wants and needs the support of all the women in the congregation.

Join Sisterhood

Sisterhood Programming for the upcoming year

February 27th Challah Baking Class
with Marla Meyer and Sue Weiss

March 8th Craft at Hammer & Stain Studio (Peabody)

March 26th Sisterhood Brunch: guest speaker TBD

April 28th Sisterhood Led Shabbat Service



Join us for Sisterhood and Brotherhood Cooking

Thursday, January 19th at 7pm

Monthly, members of our congregation gather in our kitchen to prepare Shabbat meals for fellow Temple members in need, whether they have recently suffered a loss, had surgery, or are busy caring for a newborn baby. These meals are so appreciated by all who receive them.

Please enter from the back kitchen door.

All recipes and ingredients are provided.



Brotherhood Neighborhood

Brotherhood is back and better than ever!

[Click here to join the Facebook page!](#)

Tikkun Olam Neighborhood



The Tikkun Olam neighborhood will be collecting menstrual pads for HAWC in Danvers, MA from January 4-27th.

Donations support: **Sanitary Pads for Survivors:**
HAWC Menstrual Pad Donation Drive Initiative

You may drop off donations to the Temple during office hours M-F. There will be a box in the front foyer.



Programs

[Click here to join all Zoom meetings](#)

Meeting ID: 235 688 2603

Password: 378322



Movie Night:

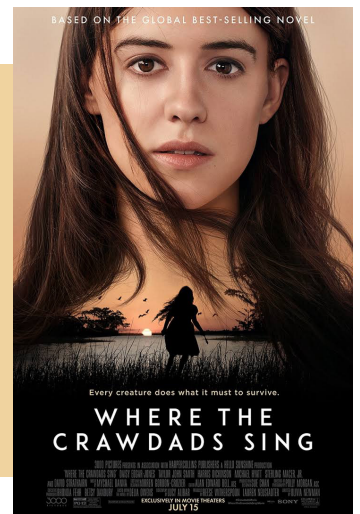
Movie Night meets on the first Wednesday of the month. Watch the movie on Netflix or Amazon Prime, and then join us on Zoom for a discussion.

On **Wednesday, January 4th, at 7:00 pm**, we'll discuss the Netflix film, **Operation Mincemeat**.

In 1943, a dead man carrying top-secret intel and a love letter turns the tide of World War II. Colin Firth stars in this true story.

For **Wednesday, February 1st, at 7:00 pm**, we'll discuss the Netflix film, **Where the Crawdads Sing**.

The book was selected by our Temple Book Group, and now it's been made into a movie. An abandoned girl raises herself in the marshlands of North Carolina. Rumors about the marsh girl isolate her from the community until she opens herself to a new and startling world.



Mah Jongg:

Tuesday nights at 7pm on Zoom

For all ages and levels of experience!

We will use Real Mah Jongg, either the app or website: realmahjongg.com and be together via Zoom.

Feel free to contact **Amy Saltz** at **781-718-0477** if you need help ordering your 2023 Mah Jongg card or have any questions.

[Play Mah Jongg!](#)



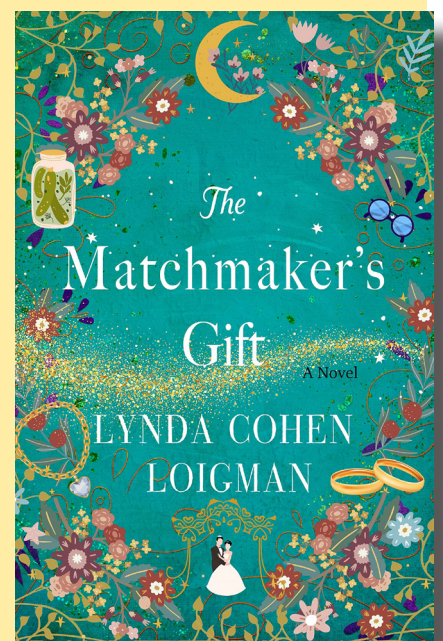
Temple Book Group:

Monday, February 13th at 7pm on Zoom

The Matchmakers Gift
by Lynda Cohen Loigman

A scrappy Jewish teenager newly arrived in 1920s New York struggles to follow her calling as a matchmaker. Seventy years later, her cynical divorce-attorney granddaughter realizes she has very inconveniently inherited the family gift for matching soulmates.

[RSVP](#)





SMARTY*: 3rd-8th grade Derby Lanes at American Flatbread

Sunday, January 29th from 12pm-1:30pm

311 Derby St.Salem, Ma 01970

\$20/child includes bowling, shoes, pizza & drinks

[RSVP](#)

Temple Emanu-El 393 Atlantic Ave., Marblehead 781-631-9300 www.emanu-el.org
*Temple Emanu El's Youth Group: Swampscott-Marblehead Area Reform Temple Youth



TEMPLE EMANU-EL

Memorial Park

As we head into 2023, we want to update you on our progress.

We now have architectural plans for the Entryway and Meditation Garden and are in the process of accepting bids for the work.

We had a very successful table at Mitzvah Day where participants of all ages artfully decorated 218 Visitation Stones to be used both in Danvers and in the Sanctuary.

We created an informative pamphlet which includes some of the professional photos we had taken during the fall. It is now available on the table in the foyer as you enter the Temple which includes some of the professional photos we had taken during the fall.

Our group has grown as we welcomed two new members. We are grateful to the entire Task Force for their ongoing commitment to this endeavor.

*Wishing Everyone
a Happy, Healthy, and
Peaceful New Year!!*

From the Memorial Park Task Force

Judith Emanuel
Carol Cipriani
Debbie Davis
Jeff Rubin
Ellen Bresner

Erin Cullen
Diane Goldenberg
Brad York
Larry Block
Bonnie Weiss



Israel@75!

1 9 4 8 - 2 0 2 3



As Israel's 75th anniversary approaches, join Ido Aharoni for a look back at influential leaders, and a peek at what may lie ahead.

Global Distinguished Professor for International Relations at NYU's Graduate School of Arts and Science

**Tuesday, January 10
7:30 p.m.-8:30 p.m. on Zoom**

**Part 2 – The Influencers: Menachem Begin,
Shimon Peres, Ariel Sharon, and Benjamin Netanyahu**

REGISTER AT

LAPPINFOUNDATION.ORG

For more information, contact Sharon Wyner (swyner@lappinfoundation.org; 978-565-4450).

Community Partners

Brooksbury Village Jewish Community
Congregation Ahavas Achim
Congregation Ahavat Olam
Congregation Shirat Hayam
Congregation Sons of Israel
Consulate General of Israel
to New England
Epstein Hillel School

Hadassah Lynn Swampscott
Marblehead Chapter
Jewish Community Center
of the North Shore
Jewish Journal
Jewish National Fund – USA/
Alexander Muss High School in Israel
New England Friends
of March of the Living
Rhode Island Coalition for Israel

Shalom Hadassah
Stand With Us
Temple Ahavat Achim
Temple Emanuel, Andover
Temple Emanu-El, Marblehead
Temple Ner Tamid
Temple Sinai
Temple Tiferet Shalom
Walnut Street Synagogue

**Atlantic Avenue Limmud —
A Collaboration for Continuing Adult Jewish Learning**

Our Stories about the Stories in the Bible

**Presented by Temple Emanu-El (Rabbi David J. Meyer)
and Congregation Shirat Hayam (Rabbi Michael Ragozin)**

7:30-8:30 pm

Tuesday, December 6, 2022 Abraham: The Idols We Break

Tuesday, January 3, 2023 Jacob: Self, Struggle and Change

Monday, February 6, 2023 Esther: The Hidden and The Revealed

Monday, March 20, 2023 Moses: Facing Mortality

Attend all or just one session. All sessions will be accessible via Zoom.

Click <https://bit.ly/stories5783> to connect to Zoom



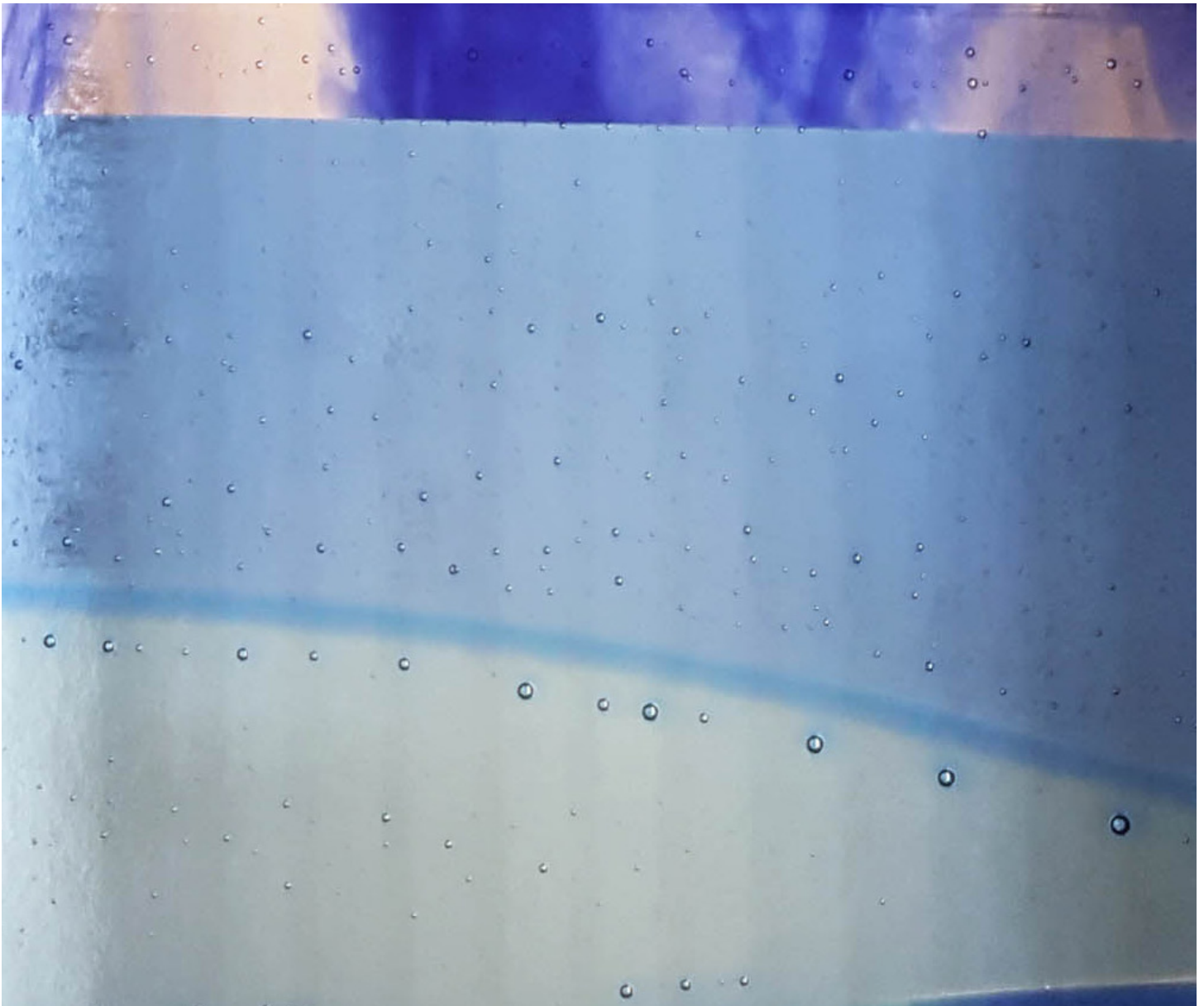
www.ShiratHayam.org and www.emanu-el.org
781-599-8005 781-631-9300

January Birthdays

| | | | |
|------------|------------------|------------|------------------|
| January 1 | Jeffrey Dornbush | January 17 | Elizabeth Buchan |
| January 1 | Linda Lissack | January 18 | Jason Krivelow |
| January 2 | Julie Cummings | January 18 | Marina Slezinger |
| January 3 | Joseph Smullin | January 19 | David Brodsky |
| January 4 | Rhonda Jackson | January 20 | Thomas Ruskin |
| January 4 | Andrea Kline | January 20 | David Lovins |
| January 4 | Eli Naparstek | January 21 | Verna Saxe |
| January 5 | Nancy Appel | January 21 | Arnold Maloff |
| January 7 | John McNamara | January 21 | David Schneider |
| January 8 | Jeff Kaplan | January 22 | Renee White |
| January 8 | Norton Halber | January 22 | Stacy Volf |
| January 9 | Lisa Schneider | January 23 | Peter Barker |
| January 9 | David Kucharsky | January 23 | Eleanor Richman |
| January 9 | Alex Tatis | January 24 | Stephen Madow |
| January 10 | Steven Fafel | January 24 | Elaine Federman |
| January 10 | Debbie Field | January 24 | Stacie McBurney |
| January 10 | Joseph Garlick | January 24 | Beth Tassinari |
| January 10 | Melvin Stairman | January 24 | Mark Cohen |
| January 11 | Melanie Kaplan | January 25 | William Selden |
| January 12 | Melissa Levy | January 25 | Neil Shore |
| January 12 | Arlene Stahl | January 25 | Patricia Cohen |
| January 12 | Larry Zabar | January 26 | Deahn Leblang |
| January 13 | Abbi Lione | January 26 | Brian Fin |
| January 14 | Carrie Killeen | January 26 | Marjorie Levin |
| January 14 | Stephen Seller | January 27 | Amy Paul |
| January 14 | Gail Gilbert | January 27 | Laurel Dolan |
| January 14 | Tracey Roman | January 27 | Todd Pierce |
| January 14 | Diane Levinson | January 28 | Sharon Chapman |
| January 15 | Howard Tripolsky | January 30 | Jodie Titus |
| January 15 | Rosie Barrett | January 30 | Reeva Oppenheim |
| January 15 | Peter Weiss | January 30 | Leonard Zamansky |
| January 16 | Heidi Rubin | January 31 | Jeffrey Gertz |
| January 16 | Joseph Kahn | January 31 | Joel Kaplan |
| January 16 | Halie Pica | January 31 | Mark Sherf |

Anniversaries

| | | |
|------------|------------------------------------|------------------|
| January 1 | Dale & Jack Gusman | 40th Anniversary |
| January 4 | Susan & Edward Bayard | 54th Anniversary |
| January 4 | Laura & Steven Kurzrok | 37th Anniversary |
| January 5 | Leslie Sack & Steven Baratz | 14th Anniversary |
| January 7 | Fern & Joey Zang | 45th Anniversary |
| January 12 | Maureen O'Reilly & Peter Waldfogel | 20th Anniversary |
| January 18 | Linda & Arthur Schwartz | 30th Anniversary |
| January 20 | Kim & Phillip Szottfried | 27th Anniversary |
| January 22 | Carla & David Herwitz | 63rd Anniversary |
| January 31 | Roberta & Steven Keenholtz | 47th Anniversary |



January Contributions

Tributes Fund

In appreciation of...

Temple Emanu-El
Charlotte R. Lewis

In memory of...

Shelly Carpenter, at yahrzeit
Elaine and Edward Hymanson

Charlotte Davis
Laura and Jim New

Joan Finn, at yahrzeit
Virginia Dodge

Bill Goldberg, at yahrzeit
Harriett Goldberg

Linda Goldman, wife of Neal Goldman
Verna and Stephen Saxe

Jean Vivian Goodman, mother of Reeva Oppenheim
Cyndy and Jack Taymore

Myron Guthartz, at yahrzeit
Randy and Arie Guthartz

Carl Halperin, at yahrzeit
Judith Goldberg

Morris Krich, at yahrzeit
Barbara Glassman

Kenny Kupetz, at yahrzeit
Alycin and Barry Yomtov

Leo McGuirk, father of Stephen McGuirk
Hope and Larry Zabar

Leola Potash, at yahrzeit
Naomi, Robert, Elia, Laura and Daniel Potash

Gregory Price, at yahrzeit
Kailie Winkeller

Barney Rafkin, at yahrzeit
Harriett Goldberg

Jacob Richmond, at yahrzeit
Arlene and David Addis

Stephen Richmond, at yahrzeit
Arlene and David Addis

Samuel Rome, at yahrzeit
Judy and David Cohen

**Evelyn Rosenkrantz, wife of Howard Rosenkrantz
and mother of Ellen Price**
Hope and Larry Zabar

Rob Schuller, at yahrzeit
Virginia Dodge

Arnold Shapiro, at yahrzeit
Elaine Shapiro and Jim Cornblatt

Gerald Sher, at yahrzeit
Sandy S. Griffel

David Shutzer, son of Miriam "Mim" Shutzer
Hope and Larry Zabar

Steven Shutzer, son of Miriam "Mim" Shutzer
Hope and Larry Zabar

Myrna Sparks, at yahrzeit
Virginia Dodge

Bob Smith, at yahrzeit
Gurpreet Rana

Gertrude Strasnick, at yahrzeit
Janice and Irwin Cohen

Arthur Myron Sugarman, at yahrzeit
Lois Longin

Beatrice Sugarman, at yahrzeit
Marlene and Robert Badolato

Ruth Adele Sugarman, at yahrzeit
Lois Longin

Abrasha Wilcher, at yahrzeit
Virginia Dodge

Bible and Prayerbook Fund

In memory of...

Myron Stone
Laura and Jim New

Flower Fund*In memory of...***Corinne Goldstein, at yahrzeit**
Nancy B. Goldstein**Landscape Fund***In memory of...***Myrna Sparks, at yahrzeit**
Joan and Richard Kessel**Library Fund***In honor of...***The birth of Joan and Richard Kessel's grandsons**
Amy Saltz*In memory of...***Irene Graff**
Arlene Padulsky**Edward Jepsky, at yahrzeit**
Roberta Frost Rosenthal**Merna Morse**
Roberta Frost Rosenthal**Steve Orlen, at yahrzeit**
Iris and Jerry Orlen**Barney Rabin, at yahrzeit**
Judith Takata**Lawrence Reines, at yahrzeit**
Iris and Eric Reines**Mae Swartz, at yahrzeit**
Arlene Padulsky**Morris Toll, at yahrzeit**
Elaine Toll**Memorial Park Fund***In memory of...***Ira Epstein**
Francine and Stanley Goldstein**Phyllis Fainzin, at yahrzeit**
Nancy Sachetti**Frances Fleit, at yahrzeit**
Carol and Bob Cipriani**Deborah Gray, at yahrzeit**
Carol and Bob Cipriani**Harry Remis, at yahrzeit**
Linda and Arthur Schwartz**Peter Remis, at yahrzeit**
Linda and Arthur Schwartz**Gregg Weiss, at yahrzeit**
Ronney and Peter Weiss**Music Fund***In memory of...***Abraham Alter, at yahrzeit**
The Tregor Family**Gary Ogan, at yahrzeit**
Leslie and Michael Goldberg**Oneg Shabbat Fund***In memory of...***Lena Bloomfield, at yahrzeit**
Jon Richmond**Gershon Salter, at yahrzeit**
Ruthie and Robert Salter

Religious School Fund

In memory of...

Bessie Rotman, at yahrzeit
Sandy Rotman

Harry Rotman, at yahrzeit
Sandy Rotman

Jack Rotman, at yahrzeit
Sandy Rotman

Zelda Rotman, at yahrzeit
Sandy Rotman

Sisterhood Fund

In memory of...

David Shutzer, son of Miriam "Mim" Shutzer
Nancy Appel

Youth Programing Fund

In memory of...

Arthur Berger, at yahrzeit
Barbara Cantor

David Shutzer, son of Miriam "Mim" Shutzer
Barbara and Emily Cantor

Ida Somers, at yahrzeit
Jerry Somers

Rabbi's Discretionary Fund

In appreciation of...

Rabbi Meyer
Nina Morrison
Susan and Jim Rudolph

Rabbi Meyer, on the occasion of the naming of Susan and Jonathan Yorks's granddaughter, Nora
Susan and Jonathan Yorks

In memory of...

David Shutzer, son of Miriam "Mim" Shutzer
Judy and Shep Remis

Steven Shutzer, son of Miriam "Mim" Shutzer
Judy and Shep Remis

January 2023 Yahrzeit Memorial Wall

January 7

Abe Altman
 Rosalie Aronson
 Deborah Gellman
 Edith Ginsberg
 Ruth Handverger
 Ida Holicker
 Clarence P. Hornung
 Lillian Kanosky
 Morris Kaplan
 Mildred Remis
 Louis L. Sandler
 Hyman Sherman
 Alvin W. Shutzer
 Charles Strasnick

January 14

Ursula Block
 Melvin Chudnofsky
 Helen Cobden
 Samuel Edelstein
 Morris Finklestein
 Harry Harris
 Dorothy B. Harrison
 Sara Stoff Hornung
 Leonard Marglous
 Richard Platcow
 Leonard E. Rubin
 Max Weinberg
 Harold Weisman

January 21

Samuel Bloomberg
 Gerald Cohen
 Regina Doben
 Herbert Greenbaum
 Helen Kaminsky
 Sylvia Lack
 Victoria Pearlstein
 Samuel S. Post
 Leona Rosenthal
 Maurice Schachter
 Fred Shulkin
 Bessie Stahl
 Eva Sterman
 Max Sterman
 Gail Alter Tregor

January 28

Israel Appel
 Edward Baum
 Jeffrey Braver
 Arlene Dannenberg
 Julius Dokton
 Frances M. Elsmore
 Andrea Y. Firestone
 Jack Klayman
 Israel Hyman Lack
 Stanley Metz
 Beatrice Paul-Packer
 Zelda Hochstein Tasman
 Helen Toochin
 Lucille Zacks



Condolences

On behalf of the entire congregation,
we extend our condolences to the following
families who have recently lost a loved one:

Ronna Thur
on the loss of her sister
Sharyn Thur Sharaf

The Stone Family
on the passing of
Myron Stone

William Orenberg
on the passing of his mother
Edith Orenberg

Planned Giving

Have you included Temple Emanu-El in your plans?

***Make a positive impact on the Temple Emanu-El community
that will last for years, even generations, to come.***

Planned, or Legacy Giving, is a powerful way to ensure that Temple Emanu-El will continue to be an enriching community that supports Judaism and Jewish life here on the North Shore.

Giving can be arranged through life insurance, annuities, a percentage/set amount of estate in a will, as well as other options.

To learn more about Planned Giving,
and adding to our Endowment,
please contact Jaime Meyers at **781-631-9300** or
jmeyers@emanu-el.org.

Additionally, please be in touch if you have already included
Temple Emanu-El in your estate plans.



Ways to Remember

At Temple Emanu-El, there are many ways to honor, celebrate, and remember dear friends, family, and past loved ones.

Memorial/Yahrzeit Wall

It is a widely observed Jewish tradition to commemorate the passing of a loved one by remembering them on a dedicated Memorial Wall. The Temple Emanu-El Memorial Wall contains a plaque with the name and date of passing. Additionally, and in keeping with the ancient Jewish custom of honoring departed ones with a stone on a marker, each plaque also has a carrier where you can place a tumbled stone on anniversary dates, or anytime at all! Your loved one's name is read at time of yahrzeit in perpetuity.

Memorial plaques ask for a donation of \$750.

Tree of Life

Located in our lobby, the Temple's welcoming Tree of Life gives all who wish an opportunity to celebrate life's joyful blessings in perpetuity by inscribing them on one of its beautiful leaves or rocks. Celebrate your simcha - weddings, births, B'nei Mitzvah, anniversaries, graduations, milestones.

Honor someone you love - children, parents, family, friends, teacher.

Tree of Life leaves and rocks ask for a donation of: \$500 - \$10,000.

Bookplates

Temple Emanu-El also offers several opportunities to remember your loved ones with the dedication of a book to the Temple Library or prayer book used at our weekly Shabbat service, a High Holyday machzor or Torah commentary. All books contain a tribute bookplate honoring and celebrating your loved one's name.

Bookplates ask for a donation of: \$36 - \$100.

To learn more about any of these forms of remembrance, please contact Temple Director Jaime Meyers at 781-631-9300 or jmeyers@emanu-el.org.

| Sun | Mon | Tue | Wed | Thu | Fri | Sat |
|---|--|---|--|--|---|---|
| 1 New Year's Day | 2 Temple Office Closed | 3 Senior Connection: meeting 11am (in person) Jewish Adult Education <i>Our Stories about the Stories in the Bible</i> 7:30pm (via Zoom) | 4 Hebrew School 4pm Movie Night 7pm (via Zoom) | 5 Hebrew School 3:30pm Hebrew School 4:30pm | 6 Family Shabbat 5:30pm Shabbat Worship Service 6pm | 7 Torah Study (via Zoom) 10am |
| 8 Religious School 9am Confirmation 9am | | 10 Senior Connection: meeting 11am (in person) Mah Jongg 7pm (via Zoom) | 11 Hebrew School 4pm Middle Eastern Cooking Class 6:30pm (via Zoom) | 12 Hebrew School 3:30pm Hebrew School 4:30pm | 13 Shabbat Worship Service 6pm | 14 Torah Study (via Zoom) 10am |
| 15 No School | 16 Temple Office Closed for MLK day | 17 Senior Connection: meeting 11am (in person) Mah Jongg 7pm (via Zoom) | 18 Hebrew School 4pm Pre-Confirmation 5:45 Jewish Music Neighborhood 7pm (via Zoom) | 19 Hebrew School 3:30pm Hebrew School 4:30pm Sisterhood and Brotherhood Cooking 7pm | 20 Shabbat Worship Service 6pm 6th Grade Family Education 7pm | 21 |
| 22 Religious School 9am Confirmation 9am Post Confirmation 10:30am | 23 | 24 Senior Connection: meeting 11am (in person) Mah Jongg 7pm (via Zoom) | 25 Hebrew School 4pm Pre-Confirmation 5:45 | 26 Hebrew School 3:30pm Hebrew School 4:30pm | 27 Shabbat Worship Service 6pm | 28 |
| 29 Religious School 9am SMARTY Bowling and Pizza 12pm | | 31 Senior Connection: meeting 11am (in person) Mah Jongg: 7pm (via Zoom) | 1 Hebrew School 4pm Pre-Confirmation 5:45pm | 2 Hebrew School 3:30pm Hebrew School 4:30pm | 3 Family Shabbat 5:30pm Shabbat Worship Service 6pm | 4 Torah Study (via Zoom) 10am |

All Zoom meetings this month use the same link— except for events outside of Temple Emanu-El. All services are in person and on Facebook Live. All Religious School classes will meet in person.

Click here to join
facebook live services

Click here to join
Zoom meetings

Visit [emanu-el.org](https://www.emanu-el.org)



David J. Meyer, Rabbi
Jaime Meyers, Executive Director
Allison Peiser, Rabbi & Temple Educator
Gail New, President

TEMPLE EMANU-EL BULLETIN
published monthly
by Temple Emanu-El,
393 Atlantic Ave.,
Marblehead, MA 01945